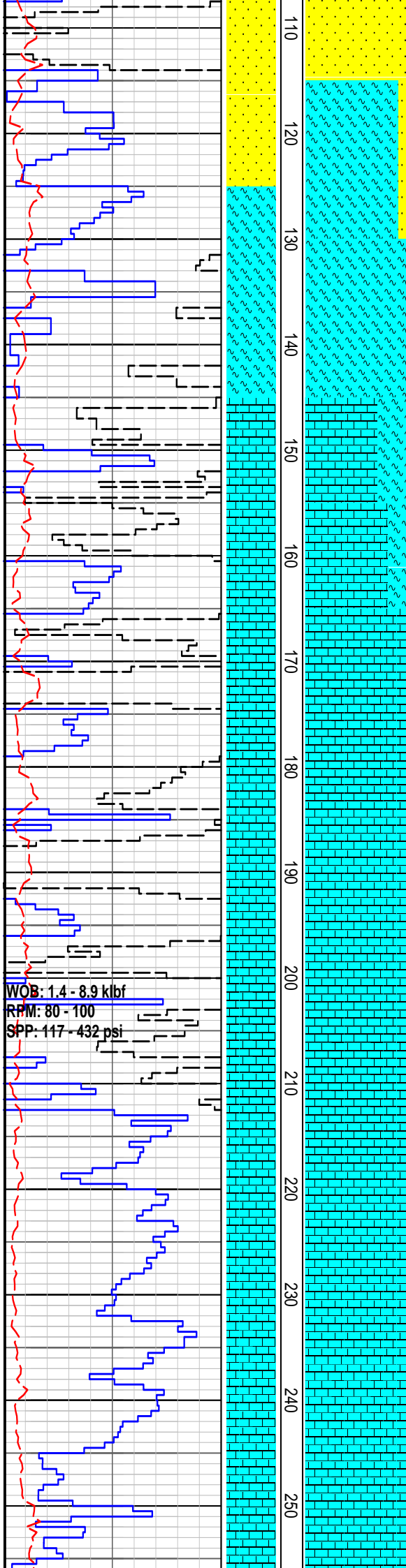




Created : 22/Oct/2009 4:33:04 AM



RATE OF PENETRATION						LITHOLOGY INTERPRETED LITHOLOGY	MD meters : 1-500	LITHOLOGY	CORE	OIL SHOWS	TOTAL GAS	CHROMATOGRAPH				REMARKS
ROP (0-100m/hr)												Methane ppm				
100	90	80	70	60	50							1	Ethane ppm	10000		
Backup ROP (100-200m/hr)								1	Propane ppm	10000						
WOB (klb)								1	iso-Butane ppm	10000						
5	10	15	20	25	30			1	n-Butane ppm	10000						
								1	iso-Pentane ppm	10000						
								n-Pentane ppm								
								10	100	1000	10000					
RR1 311mm (12-1/4") Reed EHP 41KPR Jets: 3x18" In: 16m Out: 302m Drilled: 286m in 5.7hrs							10						All Depths are Recorded in Meter from RKB			
							20						RKB - GL : 3.65m			
							30						340mm (13-3/8") casing shoe at 15.65mMD			
							40						SANDSTONE: lt m yel or, v f-crns, dom m, sbang-rnd, pr srt, n cmt, tr yel or arg & slt mtrx, qtz, clr-mky qtz gr w/yel-brn Fe ox stn, tr blk c detr, uncons, v f por, n fluor			
							50						SILTY CLAYSTONE: m gry, abd disp v f-v crs qtz sd gr, v sft, v disp, stky, n fis			
							60						SANDSTONE: lt gry, v f-v crs, dom m, sbang-rnd, dom rnd, pr srt, n cmt, com-abd m gry arg & slt mtrx, qtz w/clr-op qtz gr w/gry brn stn, com gry-blk & brn cht lit, com crs clr detr, uncons, v gd inf por, no fluor.			
							70									
							80									
							90									
WOB: 0.1 - 8.0 klbf RPM: 80 SPP: 149 - 335 psi							100									

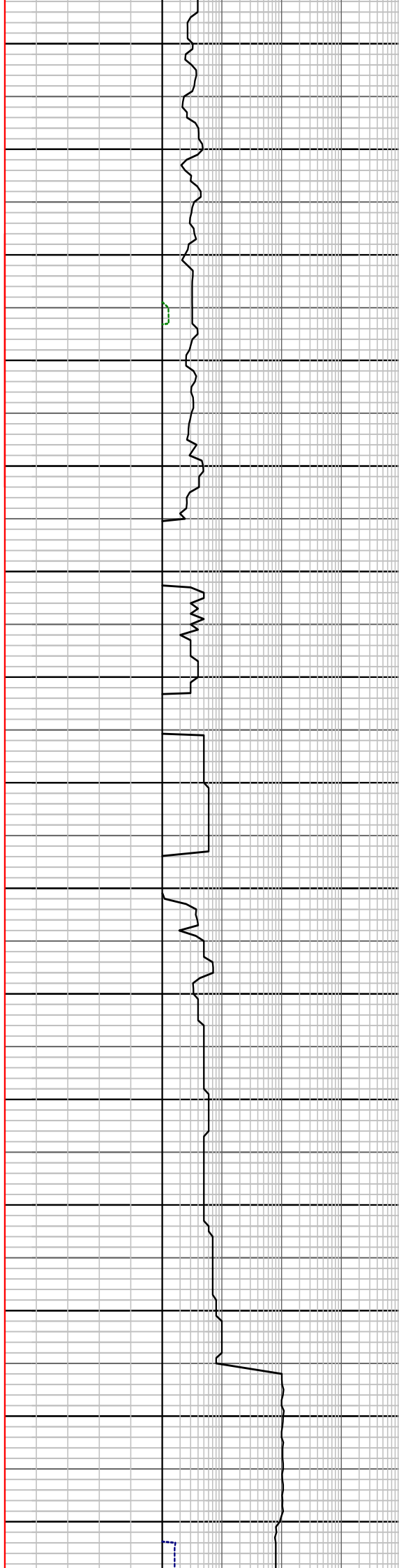
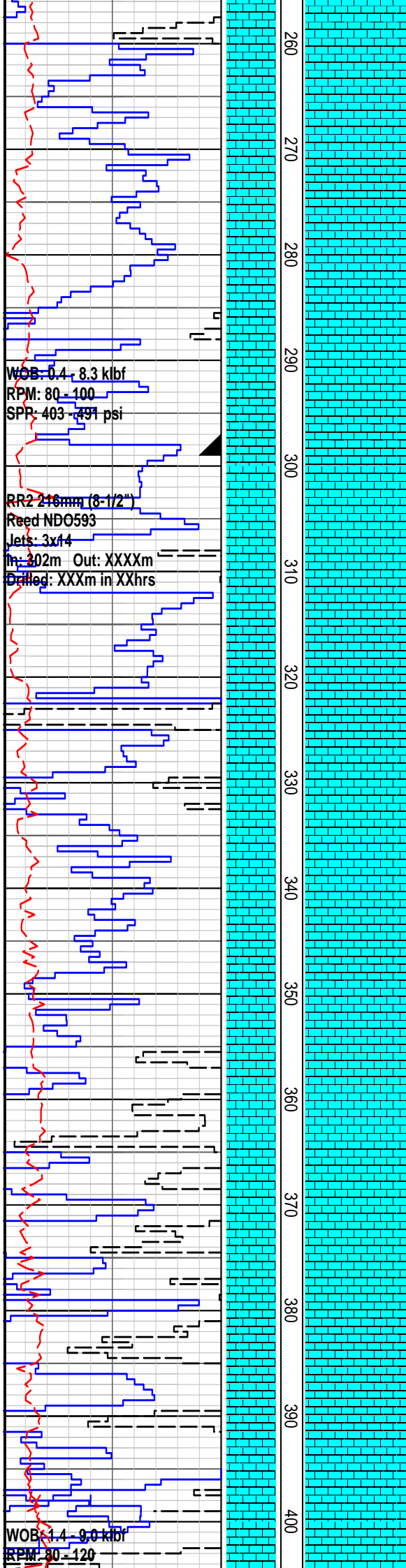


MARL: lt gry-m gry, m gn gry-m brn gry, com-abd foss frags incl bry, shell frags, forams, v sft, v disp, n fiss

CALCARENITE: lt gry-lt brn gry, f-m gr, wk calc cmt, abnt foss frag incl bry, forams, shell frags, mod argill, tr-com vf-f qtz gr, rr m gn glauc, p vis por, n fluor

CALCARENITE: lt gry-lt brn gry, f-m gr, wk calc cmt, abd foss frags incl bry, forams, shell frags, mod argill, tr-com v f-f qtz gr, rr m gn glauc, p vis por, n fluor

CALCARENITE: lt gry-lt brn gry, f-m gr, wk calc cmt, abd foss frags incl bry, forams, shell frags, mod argill, tr-com v f-f qtz gr, rr m gn glauc, p vis por, n fluor

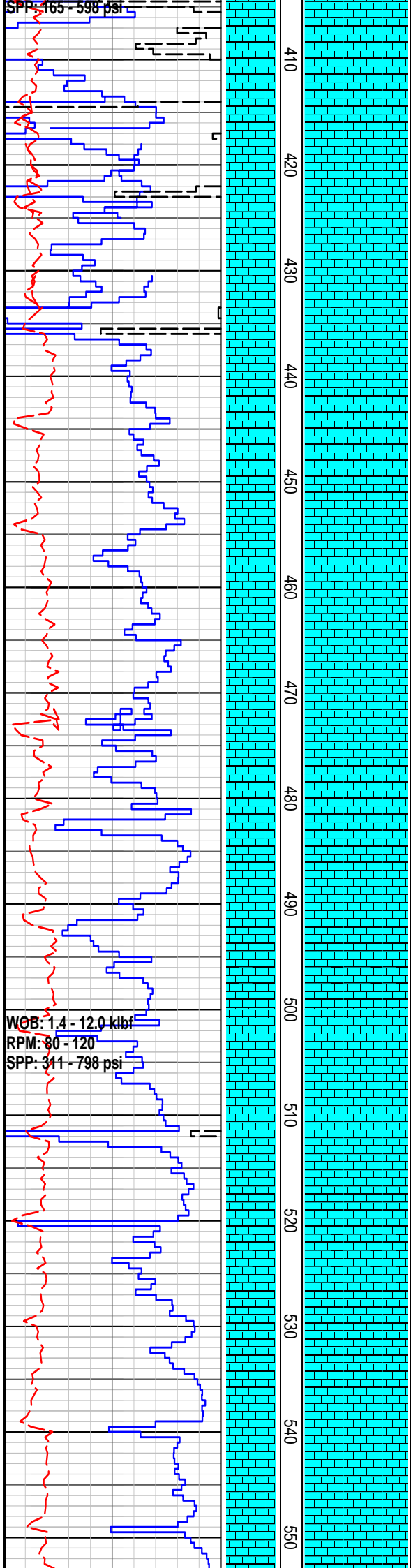


CALCARENITE: lt gry-lt brn gry, rr lt
gn gry, f-m gr, wk calc cmt, abd foss
frags incl bry, forams, shell frags, sli
argill, rr v f-f qtz gr, rr m gn glauc, p
vis por, n fluor

244mm (9-5/8") casing shoe
at 299mMD

CALCARENITE: lt gry-lt brn gry, rr lt
gn gry, f-m gr, wk calc cmt, abd bry,
forams, shell frags, mod argill, rr-com
v f-f qtz gr, tr gn glauc gn glauc, p vis
por, n fluor

CALCARENITE: lt gry-lt brn gry, rr lt
gn gry, f-m gr, wk calc cmt, abd bry,
forams, shell frags, mod argill, rr v f-f
qtz gr, tr gn glauc, p vis por, n fluor



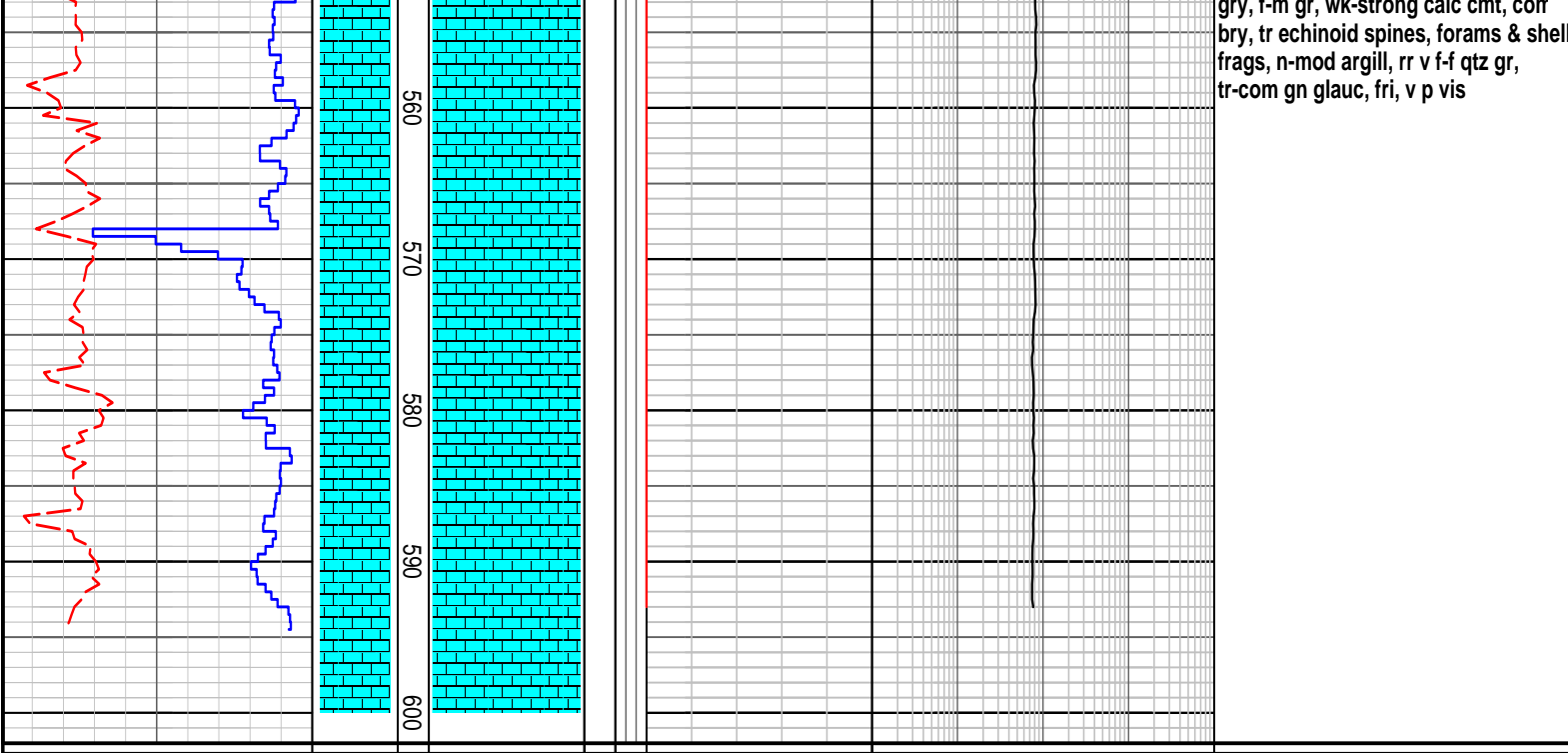
CALCARENITE: off wh-lt m gry-lt brn gry, f-m gr, wk-mod strong calc cmt, abd bry, forams, shell frags, mod argill, rr v f-f qtz gr, tr gn glauc, p vis por, n fluor

CALCARENITE: off wh-lt m gry-lt brn gry, f-m gr, wk-mod strong calc cmt, abd bry, forams, shell frags, n-mod argill, rr v f-f qtz gr, tr gn glauc, p vis por, n fluor

Survey at 472m
25 N-E
2 degs

CALCARENITE: off wh-lt m gry-lt brn gry, f-m gr, wk-mod strong calc cmt, abd bry, forams, shell frags, mod argill, rr v f-f qtz gr, tr gn glauc, p vis por, n fluor

CALCARENITE: off wh-lt m gry-lt brn gry, f-m gr, wk-mod strong calc cmt, abd bry, forams, shell frags, mod argill, rr v f-f qtz gr, tr gn glauc, p vis por, n fluor



gry, f-m gr, wk-strong calc cmt, con
bry, tr echinoid spines, forams & shell
frags, n-mod argill, rr v f-f qtz gr,
tr-com gn glauc, fri, v p vis

FORMATION EVALUATION LOG

RATE OF PENETRATION													INTERPRETED LITHOLOGY	MD meters 1:500	LITHOLOGY	CORE	OIL SHOWS	TOTAL GAS	CHROMATOGRAPH				REMARKS				
ROP (0-100m/hr)																			1	Methane ppm		10000					
100	90	80	70	60	50	40	30	20	10										1	Ethane ppm		10000					
Backup ROP (100-200m/hr)																			1	Propane ppm		10000					
200	190	180	170	160	150	140	130	120	110										1	iso-Butane ppm		10000					
WOB (klb)																			1	n-Butane ppm		10000					
5	10	15	20	25	30	35	40	45	50										1	iso-Pentane ppm		10000					
																								1	n-Pentane ppm		
																								10 100 1000 10000			