



INTEQ

Company : Lakes Oil N.L.

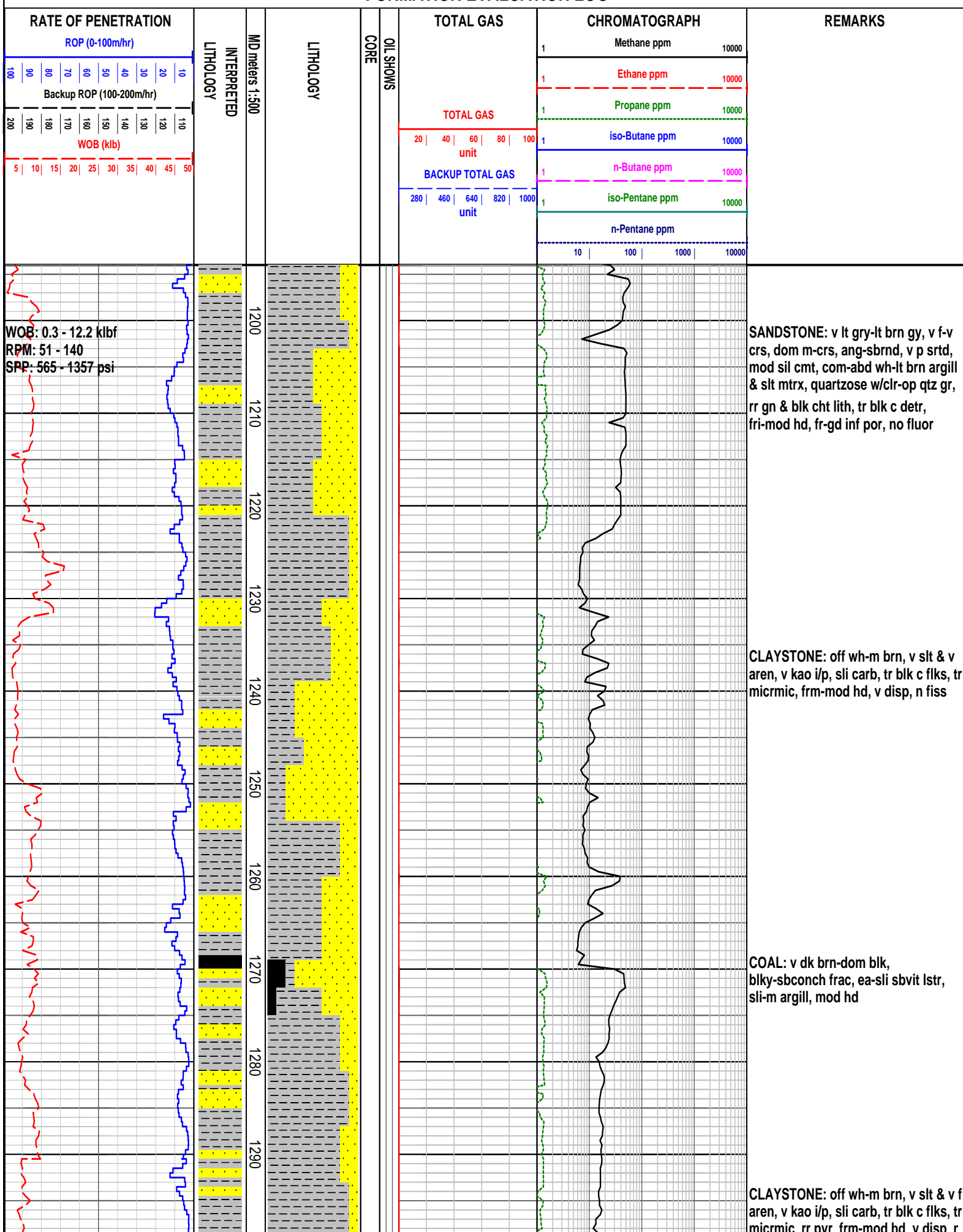
Well : Wombat-4

Interval : 1194.00 - 1877.31 meters

Created : 05/Nov/2009 5:32:04 AM



## FORMATION EVALUATION LOG



WOB: 2.3 - 16.0 klbf  
RPM: 50 - 158  
SPP: 950 - 1345 psi

RB4 216mm (8-1/2")  
Reed TD43 AKP3  
Jets: 3x14  
In: 1366m Out: 1378m  
Drilled: 12.0m in 1.3hrs

NB5 156mm (6-1/8")  
Smith MDi613  
Jets: 3x12  
In: 1378m Out: 1478m  
Drilled: 100m in 5.9hrs

WOB: 2.6 - 6.5 klbf  
RPM: 40 - 50  
SPP: 960 - 1060 psi

1300  
1310  
1320  
1330  
1340  
1350  
1360  
1370  
1380  
1390  
1400  
1410  
1420  
1430  
1440

STG: 1.15unit @ 1366m  
TG: 1.44unit @ 1366m

TG: 54.66unit @ 1387m

TG: 120.20unit @ 1432m

SANDSTONE: v lt gry-lt brn gy, v f-gt, dom m, ang-sbrnd, v p srtd, mod sil cmt, abd off wh-lt brn argill & slt mtrx, quartzose w/clr-op qtz gr, rr gn & blk cht lith, tr blk c detr, tr pyr, mod hd, fr inf por, no fluor

CLAYSTONE: off wh-m brn, dom lt brn, v slt & v f aren, v kao i/p, sli carb, tr blk c flks, tr micrmic, tr pyr, mod hd, v disp, sli sbfiss

Survey at 1354m  
N60degSE  
1.5 degs

CLAYSTONE: off wh-m gn gry-m brn gry, mod slty, tr vf off wh alt fspr gr, tr brn-blk carb spks, tr micrmic, sft, v disp, sli sbfiss

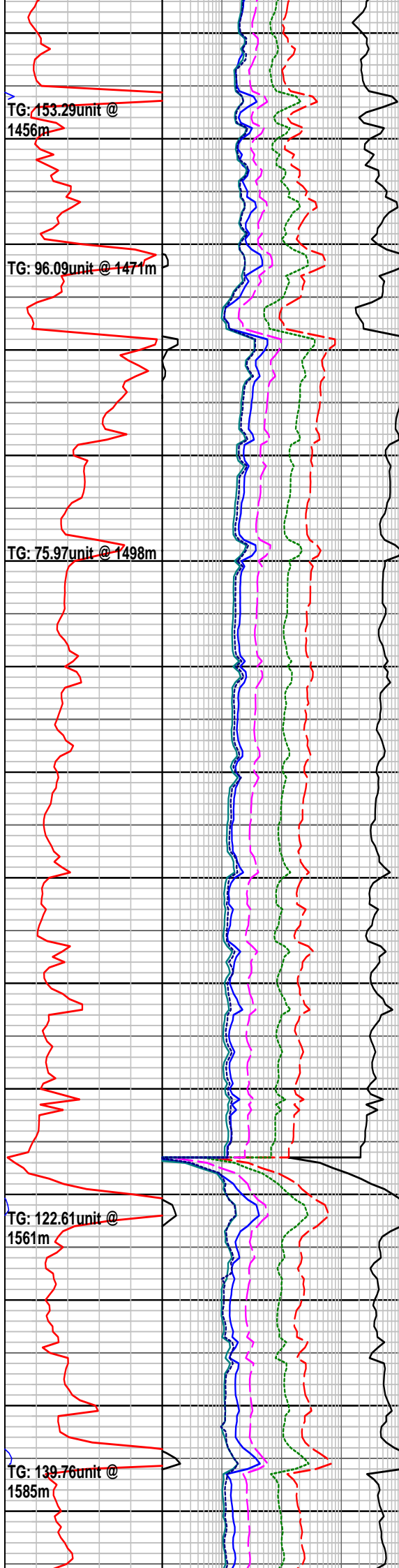
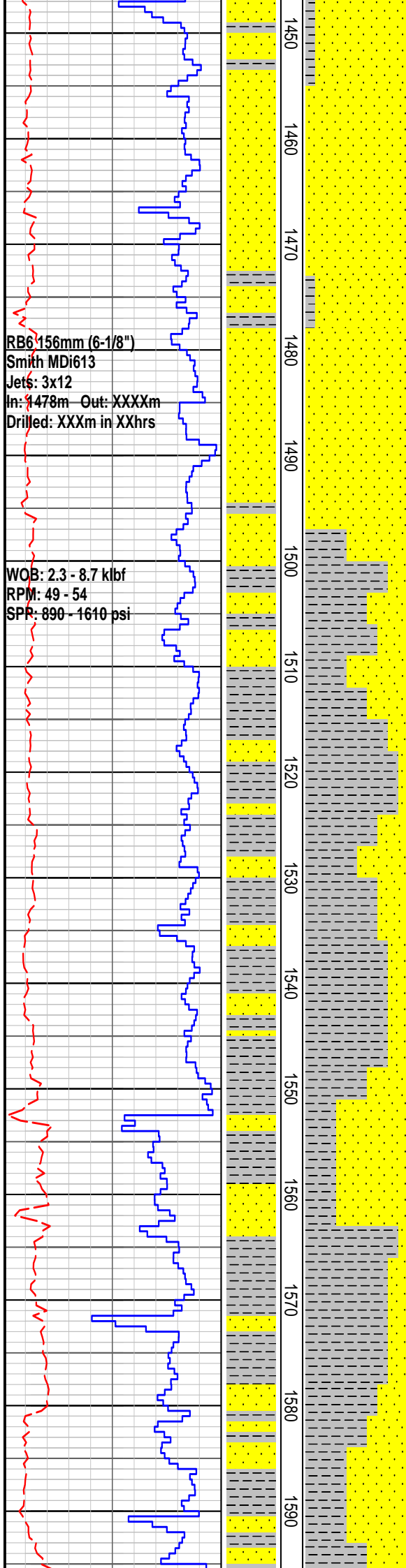
Run#1 HALS - BHC - PEX  
1361 - 299m  
GR to Surface

178mm (7") casing shoe  
at 1376mMD

SANDSTONE: lt gry, vf-f, occ m, dom f, sbang-sbrnd, mod srtd, wk sil cmt, abd off wh argill & mtrx, abd alt fspr gr, com rd brn gry & gn, lith, tr qtz gr, tr c brn mic flk, tr v f blk carb detr, tr pyr, fri, v p vis por, no fluor

Formation L.O.T. @ 1382m  
MW: 9.8ppg EMW: 13.1ppg

CLAYSTONE: off wh-m gn gry-m gry, occ m brn gry, mod slty, tr v f off wh alt fspr gr, tr brn-blk carb spks, tr micrmic, frm, v disp, sli sbfiss



SANDSTONE: lt gry-lt gn gry, v f-rr m, dom f, dom f, sbang-sbrnd, mod srtd, mod sil cmt, wk calc cmt i/p, abd off wh argill mtrx, abd alt fspr gr & rd brn gry & gn lith, 10% qtz gr, tr crs brn mic flks, tr v f blk carb detr, tr pyr, fri, v p vis por, no fluor

DST #1 1383m - 1478m

SANDSTONE: lt gn gry, v f-occ m, dom f, sbang-sbrnd, mod srtd, mod sil cmt, wk calc cmt i/p, abd off wh argill mtrx, abd alt fspr gr & rd brn gry & gn lith, 10% qtz gr, tr crs brn mic flks, tr v f blk carb detr, rr pyr, fria, v p vis por, no fluor

CLAYSTONE: lt-m brn gry-m gry-occ m gn gry, v slty i/p grdg to argill SLTST, v f aren i/p, tr v f off wh alt fspr gr, tr-com brn-blk carb spks, tr micrmic, frm, v disp, sli sbfiss

SANDSTONE: lt gn gry, v f-f, dom f, sbang-sbrnd, mod srtd, mod sil cmt, wk calc cmt i/p, abd off wh argill mtrx, abd alt fspr gr & rd brn gry & gn lith, com qtz gr, tr crs brn mic flks, tr v f blk carb detr, tr calc lined frac, fria, no vis por, no fluor

CLAYSTONE: lt-m gn gry-m gry-m brn gry, mod-v slty grdg to argill SLTST i/p, v f aren i/p, tr v f off wh alt fspr gr, tr-com brn-blk carb spks & c detr, tr micrmic, frm, v disp, sli sbfiss

WOB: 0.9 - 12.1 klbf  
RPM: 25 - 60  
SPP: 870 - 1451 psi

WOB: 1.2 - 15.6 klbf  
RPM: 14 - 56  
SPP: 1010 - 1540 psi

1600  
1610  
1620  
1630  
1640  
1650  
1660  
1670  
1680  
1690  
1700  
1710  
1720  
1730  
1740

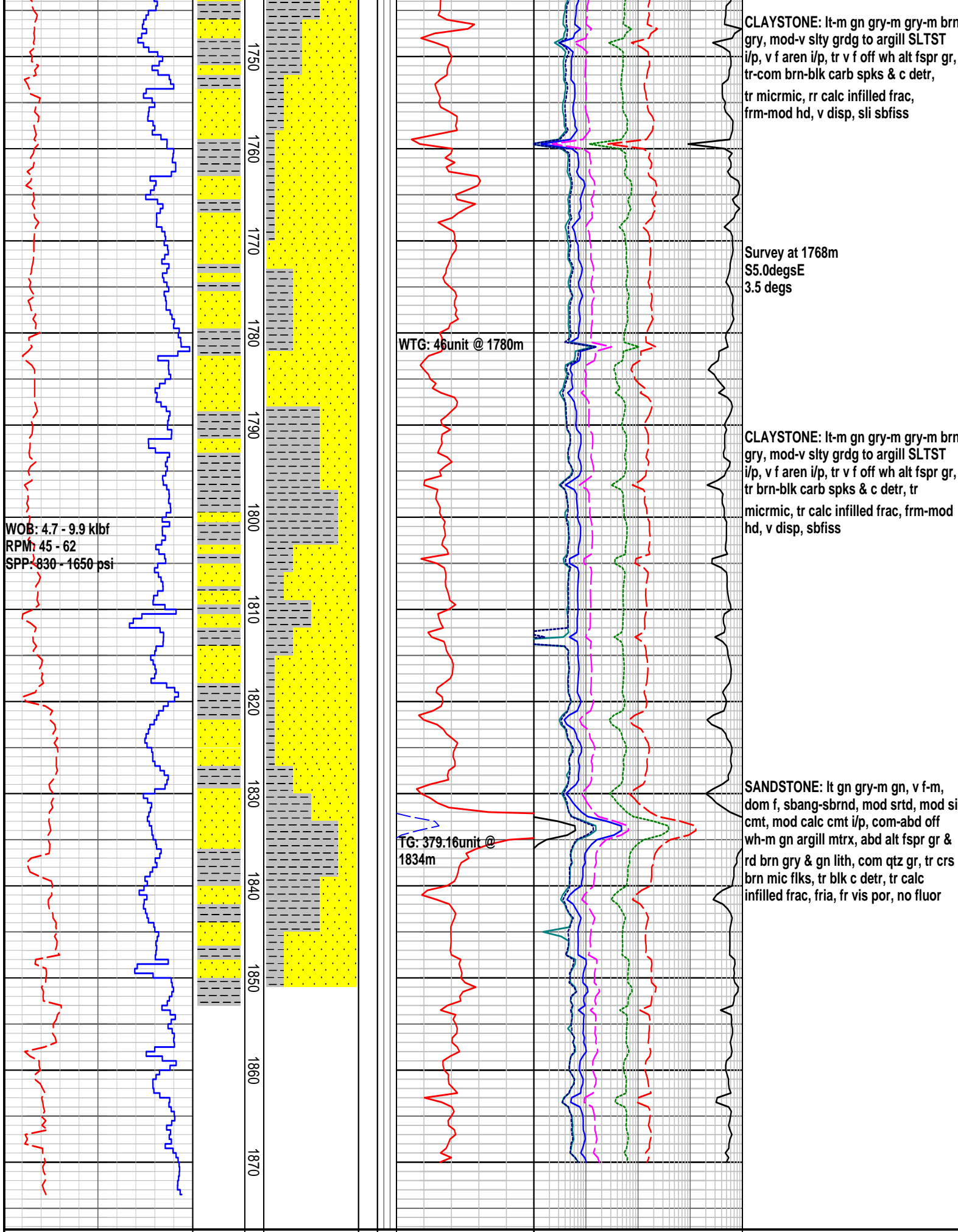
SANDSTONE: lt gn gry, v f-m, dom m, sbang-sbrnd, mod srtd, mod sil cmt, wk calc cmt i/p, abd off wh argill mtrx, abd alt fspr gr & rd brn gry & gn lith, com qtz gr, tr crs brn mic flks, tr blk c detr, fria, no vis por, no fluor

SANDSTONE: lt gn gry, v f-m, dom f, sbang-sbrnd, mod srtd, mod sil cmt, mod-strong calc cmt i/p, abd off wh argill mtrx, abd alt fspr gr & rd brn gry & gn lith, com qtz gr, tr crs brn mic flks, tr blk c detr, rr calc infilled frac, fria, p vis por, no fluor

CLAYSTONE: lt-m gn gry-m gry-m brn gry, mod-v slty grdg to argill SLTST i/p, v f aren i/p, tr v f off wh alt fspr gr, tr-com brn-blk carb spks & c detr, tr micrmic, tr calc infilled frac, frm-mod hd, v disp, sli sbfiss

SANDSTONE: lt gn gry, v f-f, dom f, sbang-sbrnd, mod srtd, mod sil cmt, mod-strong calc cmt i/p, abd off wh argill mtrx, abd alt fspr gr & rd brn gry & gn lith, com qtz gr, tr crs brn mic flks, tr blk c detr, rr calc infilled frac, fria, p vis por, no fluor





FORMATION EVALUATION LOG

RATE OF PENETRATION										LITHOLOGY	LITHOLOGY	CORE	OIL SHOWS	TOTAL GAS	CHROMATOGRAPH				REMARKS
ROP (0-100m/hr)															1	Methane ppm		10000	
Backup ROP (100-200m/hr)															1	Ethane ppm		10000	
															1	Propane ppm		10000	
100	90	80	70	60	50	40	30	20	10										

[illegible]