

# WKF W9A LWD VISION SERVICE RT 500MD

ARC6A-AA  
SON675

Id14\_0c\_26  
Id14\_0c\_26

MWD\_10  
ADN

Id14\_0c\_26  
Id14\_0c\_26

Format: VISION SERVICE RT 500MD

Vertical Scale: 1:500

Graphics File Created: 31-Dec-2009 04:10

## PIP SUMMARY

arcVISION Gamma Ray

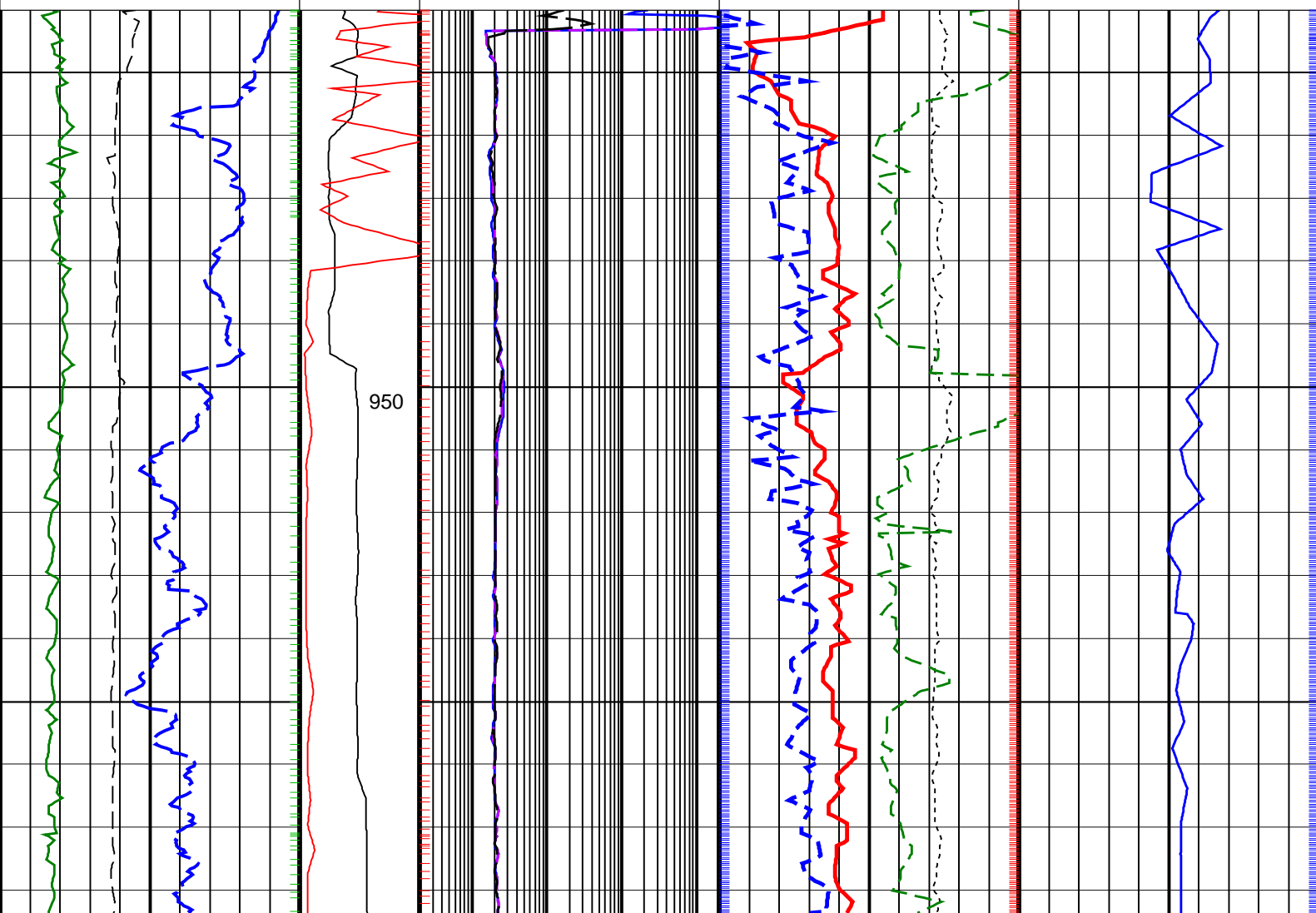
Delta-T Compressional, Real-Time

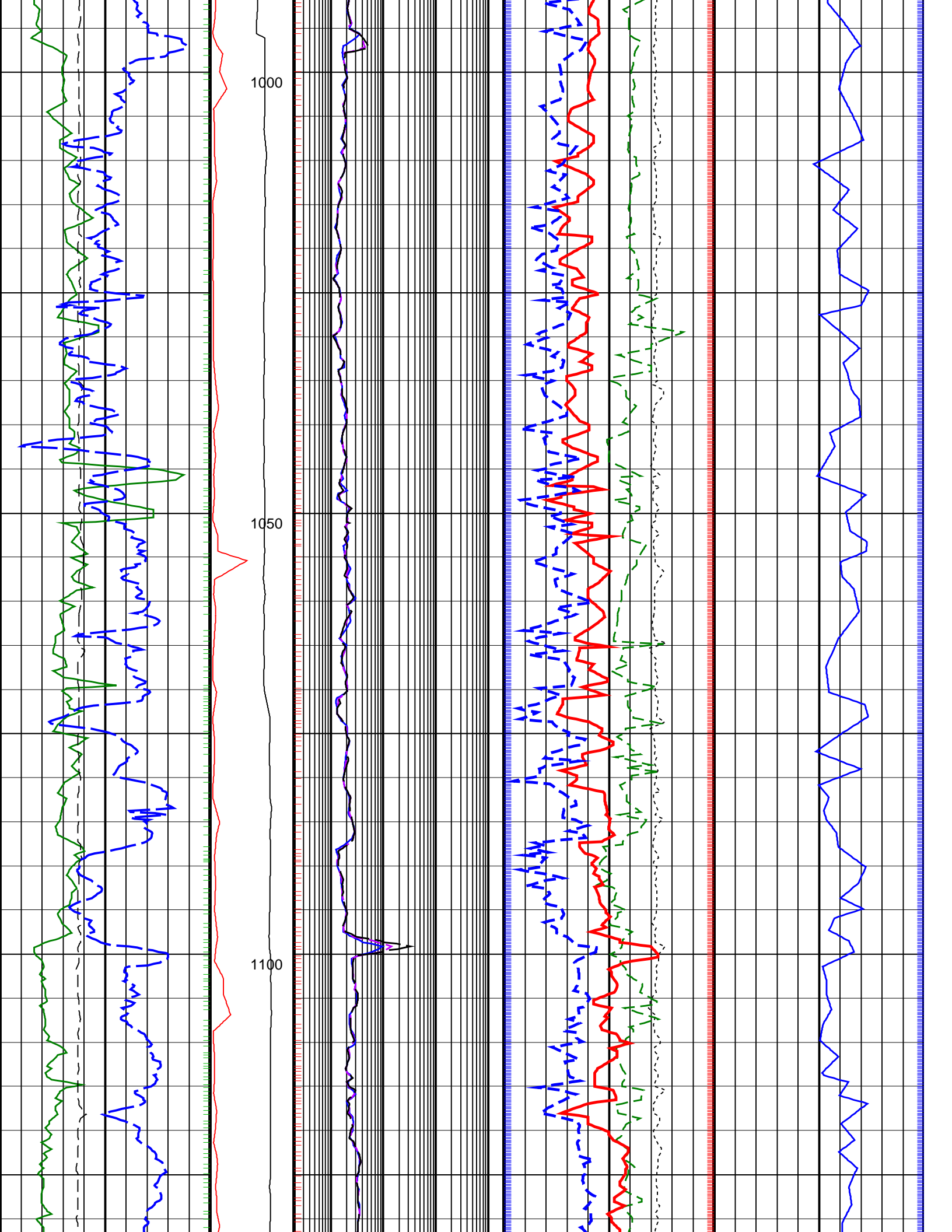
Resistivity

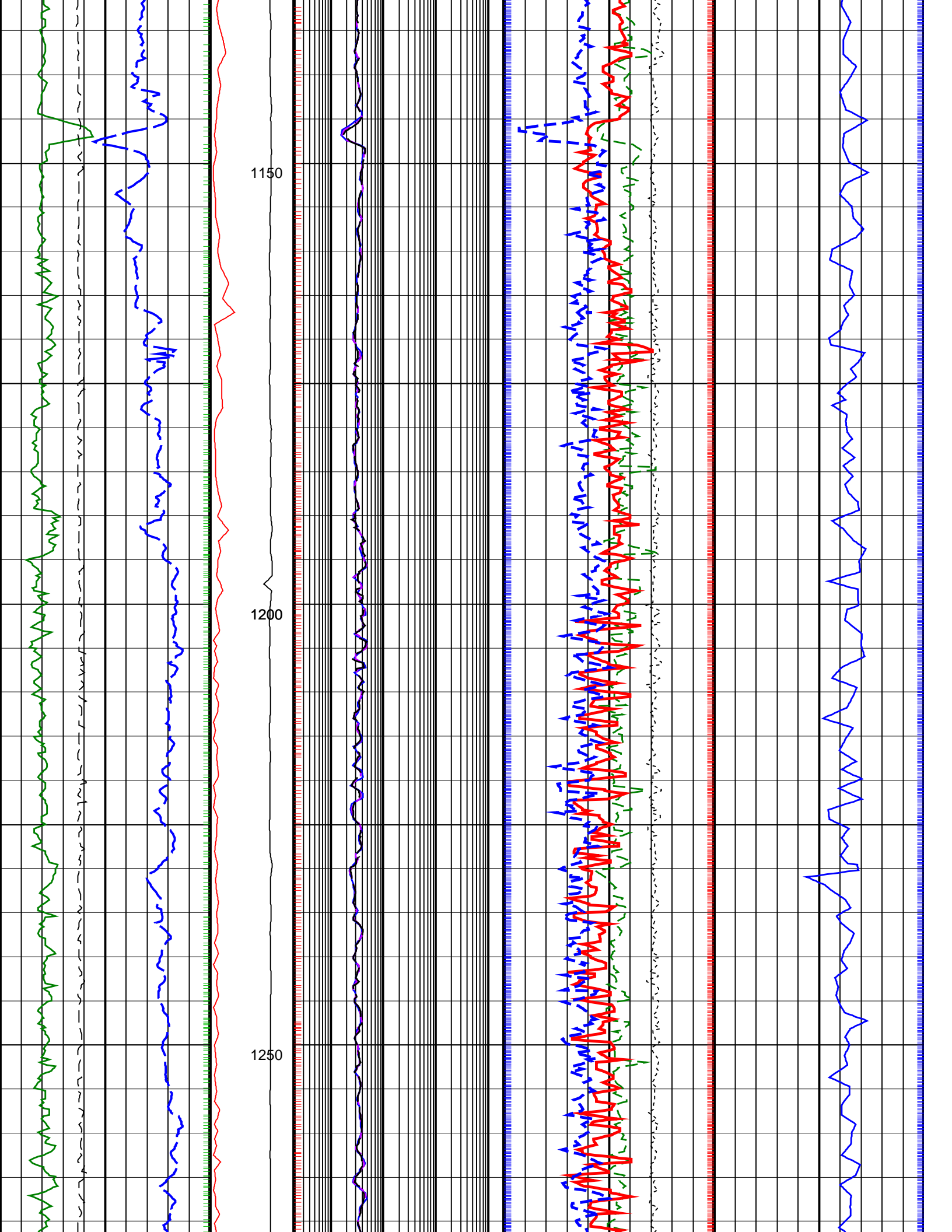
ROBB (Density Bottom)

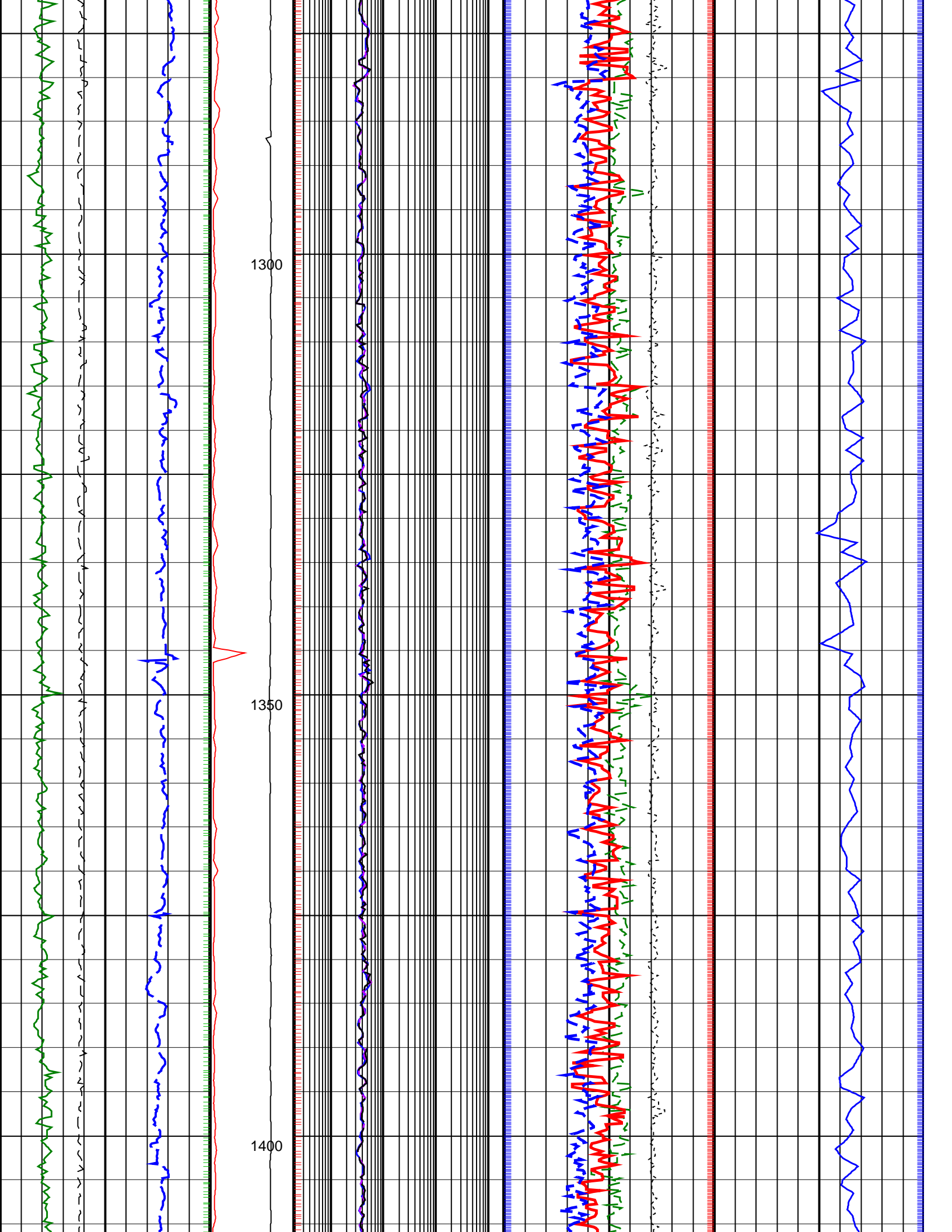
TNPH (Thermal Neutron Porosity)

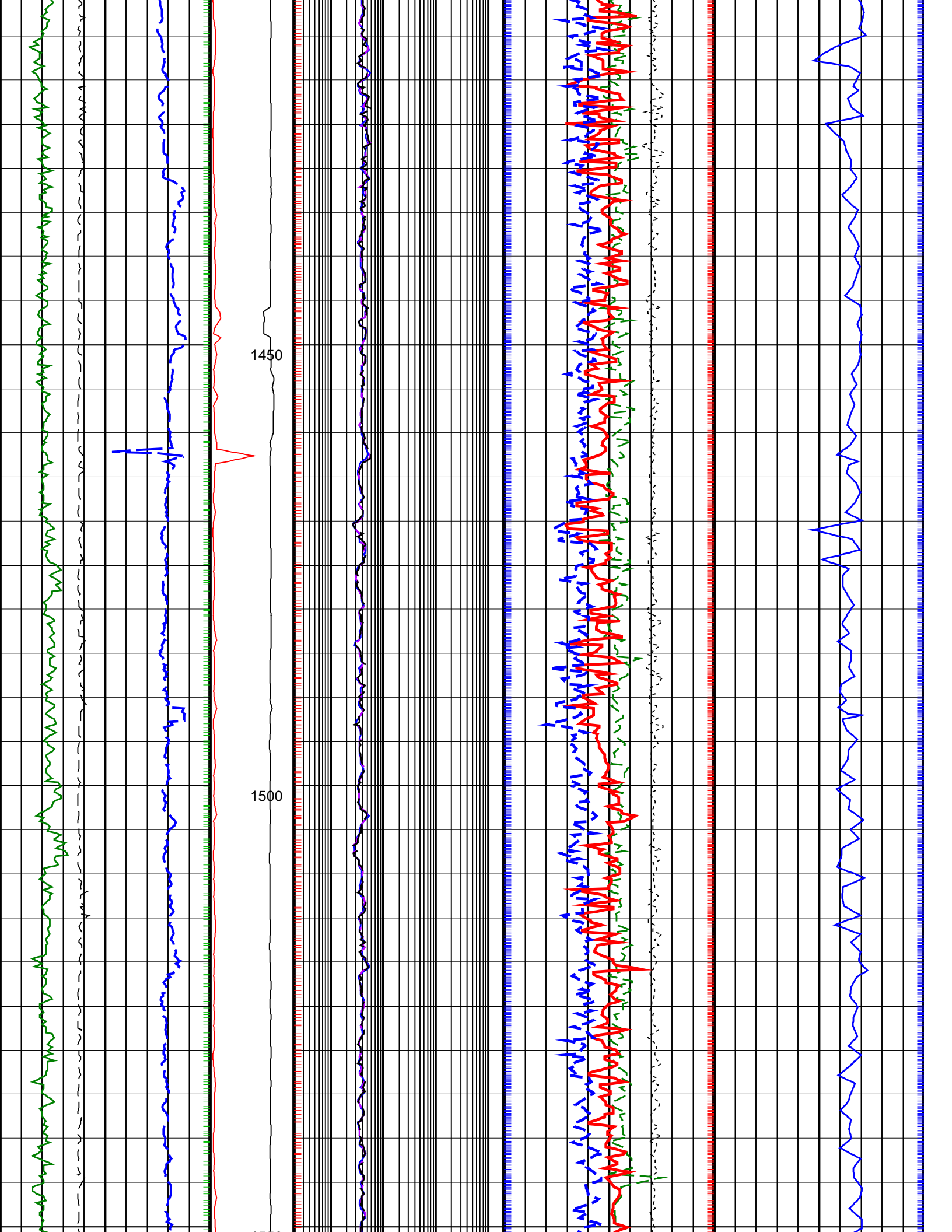
		<u>Thermal Neutron Porosity, Real-Time (TNPH_ADN_RT)</u> 0.45 (V/V) -0.15	
<b>ARC Gamma Ray, Real-Time (ARC_GR_RT)</b> 0 (GAPI) 200		<b>ARC BHCorr Phase-Shift Resistivity 40-in. at 2 MHz, Real-Time (P40H_RT)</b> 0.2 (OHMM) 2000	
		<b>Bulk Density, Bottom, Real-Time Computed Downhole (ROBB_DH_RT)</b> 1.85 (G/C3) 2.85	
<b>Density Caliper Average, Real-Time (DCAV_RT)</b> 6 (IN) 16		<b>ARC BHCorr Phase-Shift Resistivity 28-in. at 2 MHz, Real-Time (P28H_RT)</b> 0.2 (OHMM) 2000	
MWD Collar RPM (CRPM_RT) (RPM) 0 250		<b>Photoelectric Factor, Bottom, Real-Time (PEB_RT)</b> 0 (-----) 10	
<u>ROP*5 (ROP5)</u> 200 (M/HR) 0		<b>ARC BHCorr Phase-Shift Resistivity 16-in. at 2 MHz, Real-Time (P16H_RT)</b> 0.2 (OHMM) 2000	
PKPK_RPM (Stick_RT) (RPM) 0 250		<b>Bulk Density Correction, Bottom, Real-Time Computed Downhole (DRHB_DH_RT)</b> -0.75 (G/C3) 0.25	
		<b>Delta-T Compressional, Real-Time (DTCO_RT)</b> 600 (US/M) 100	

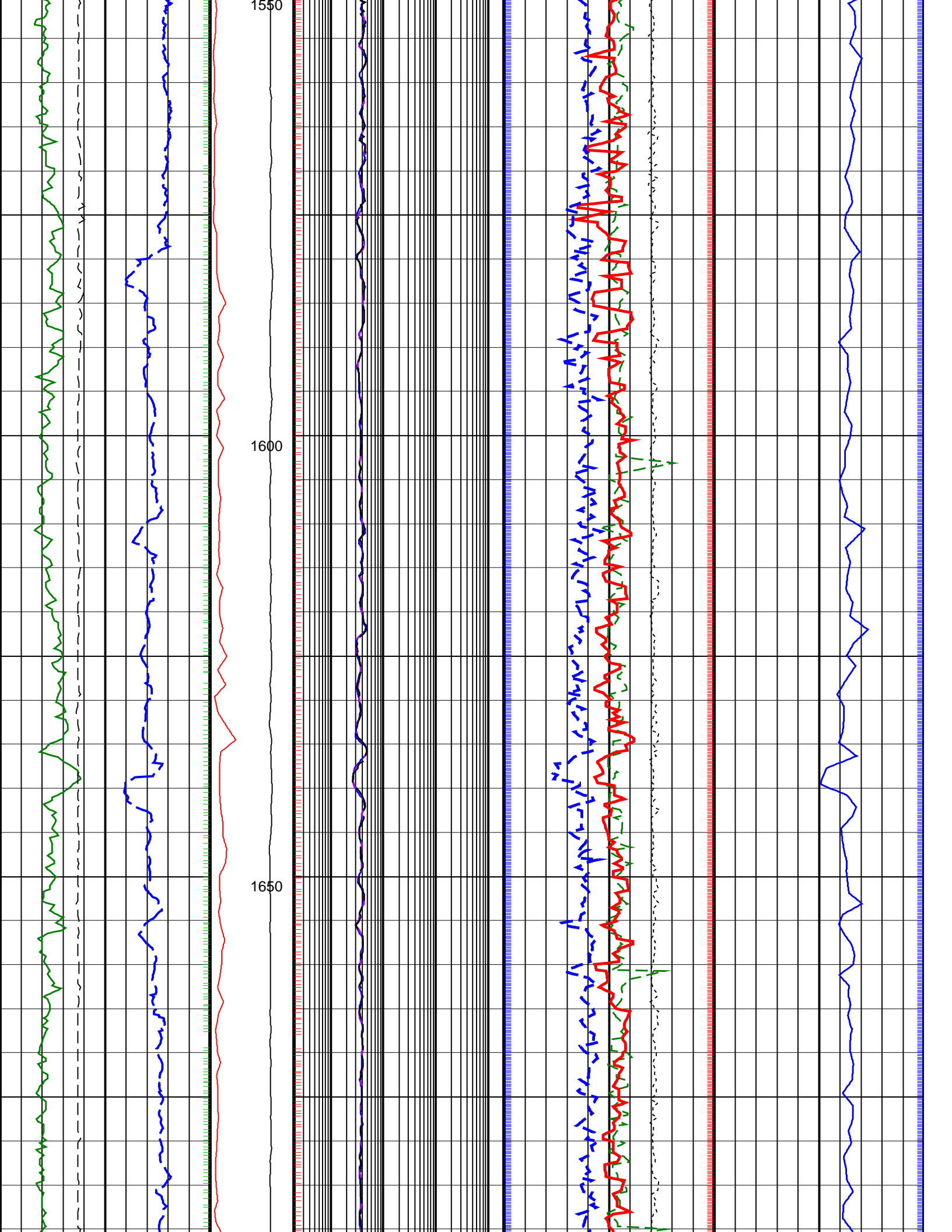


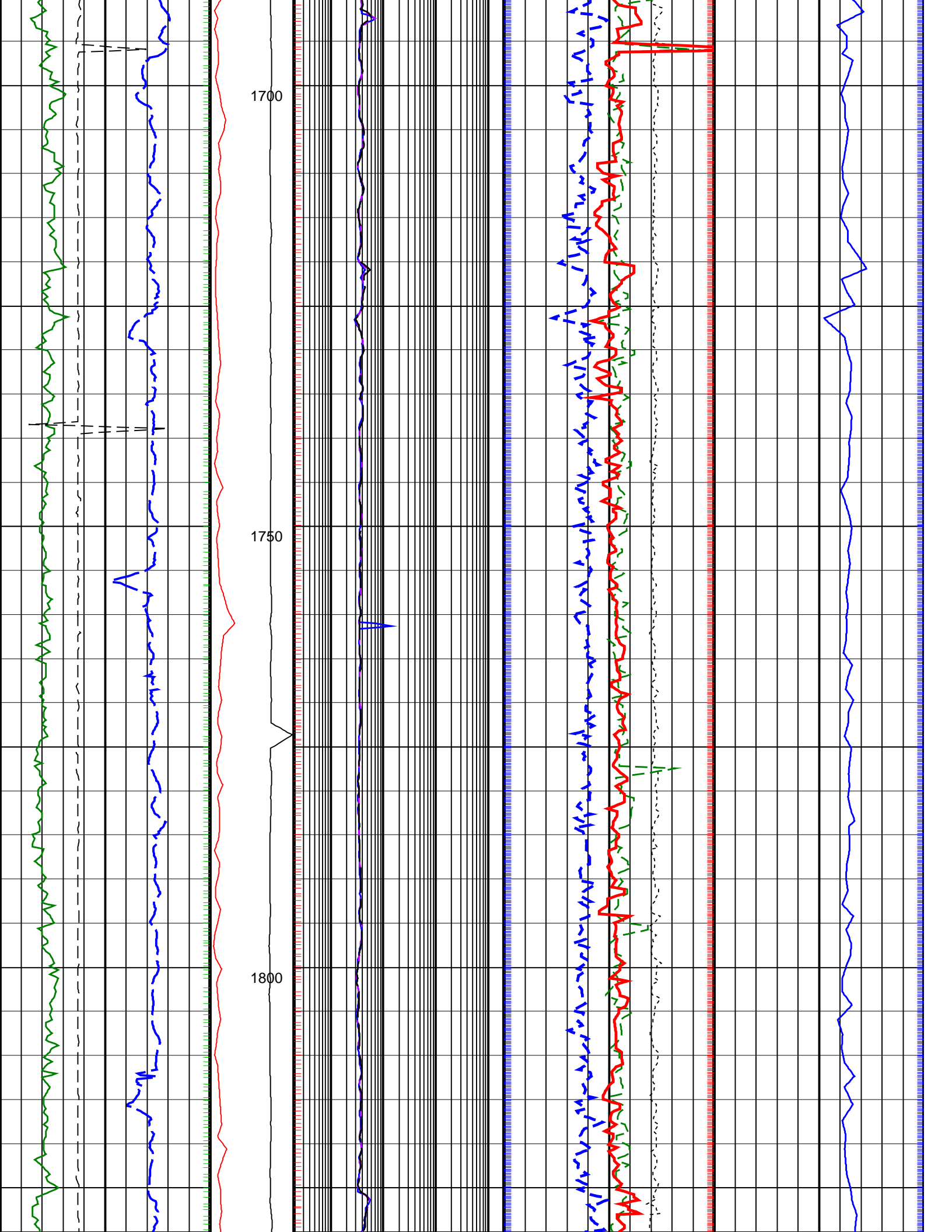


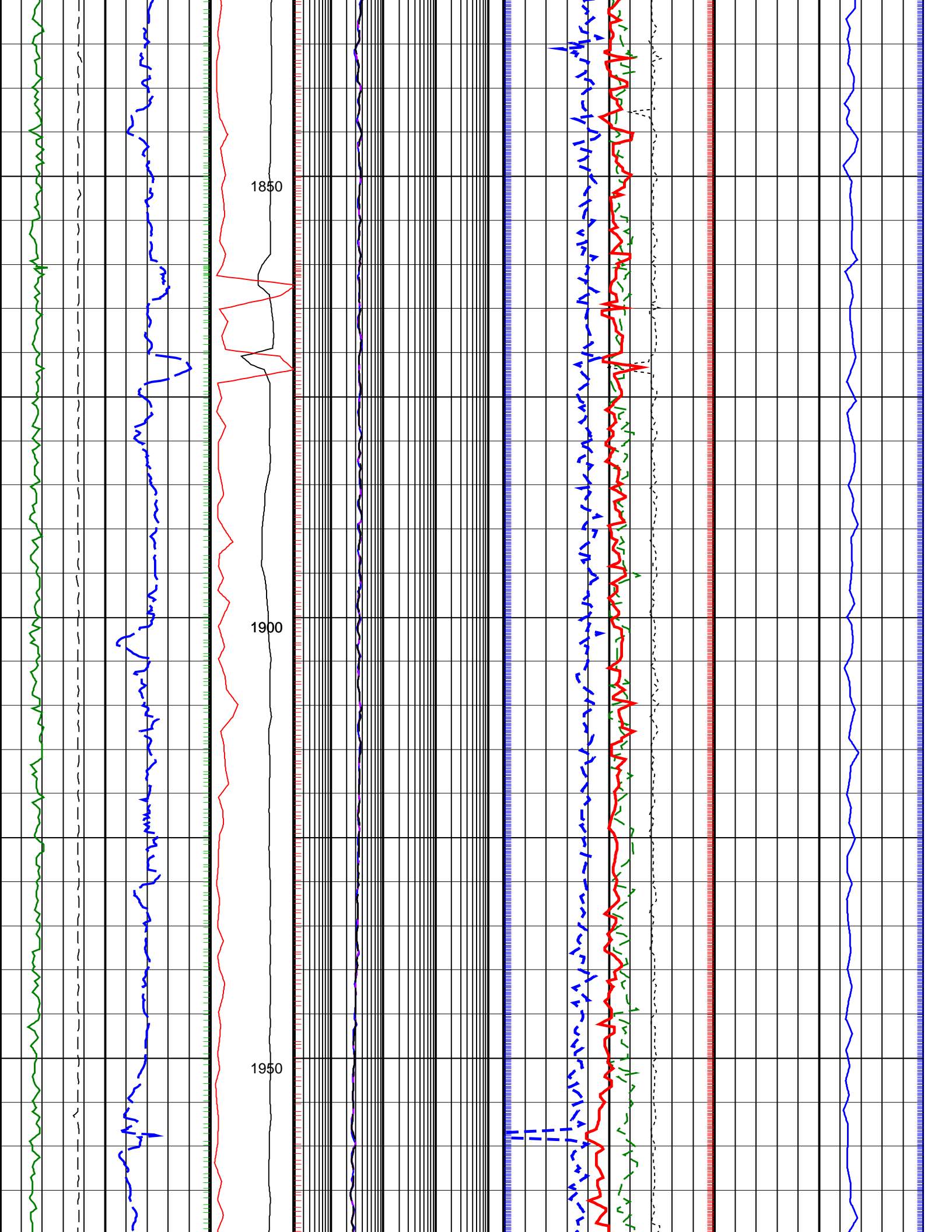




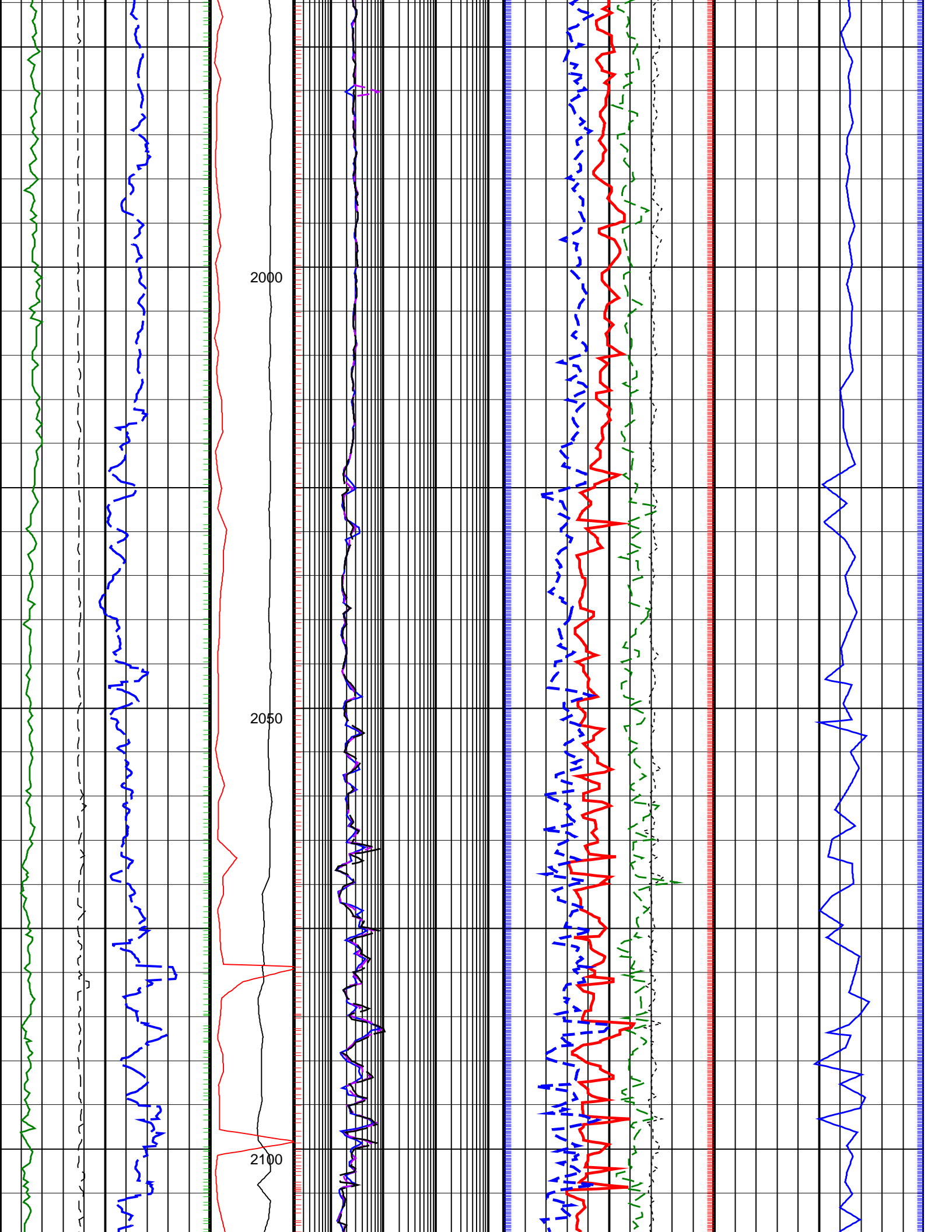


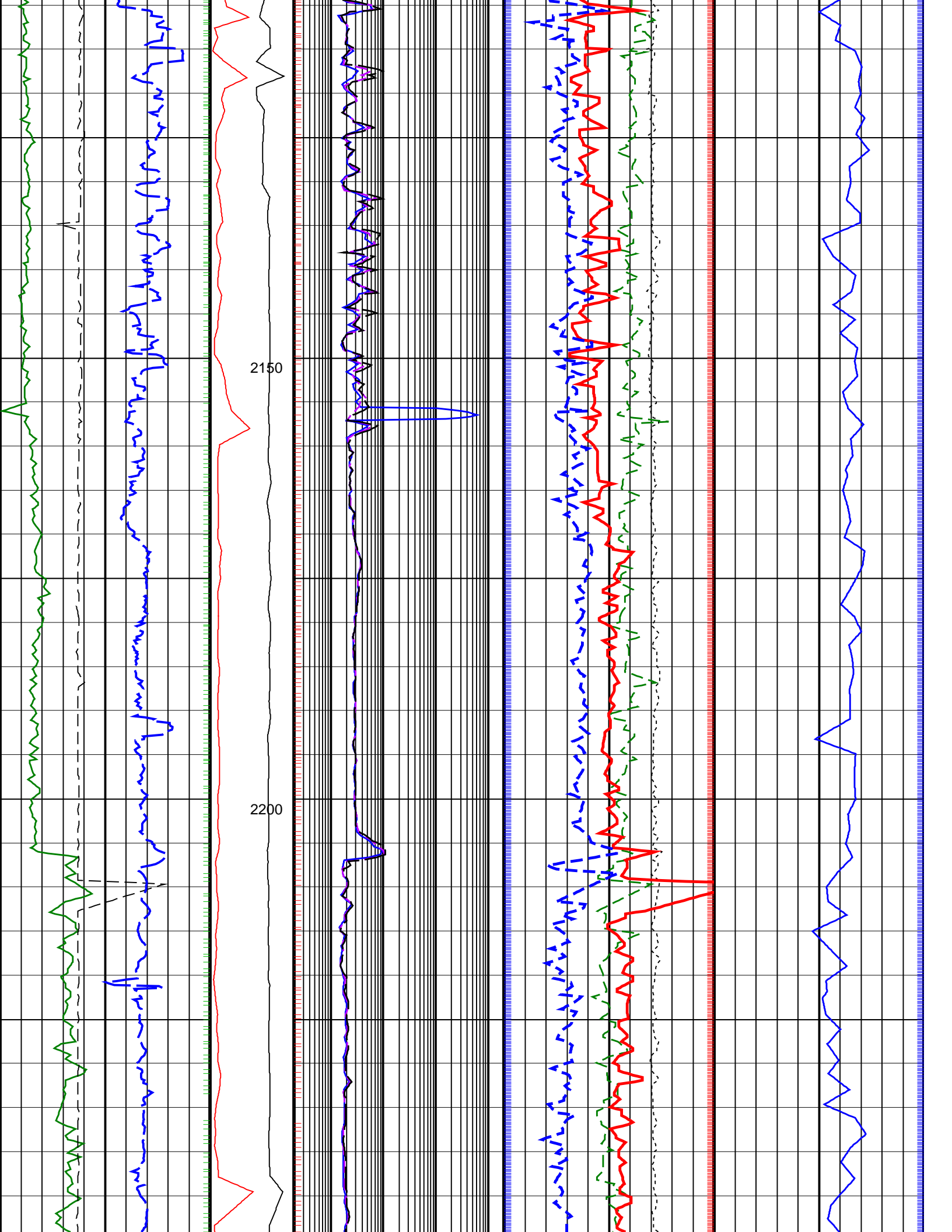


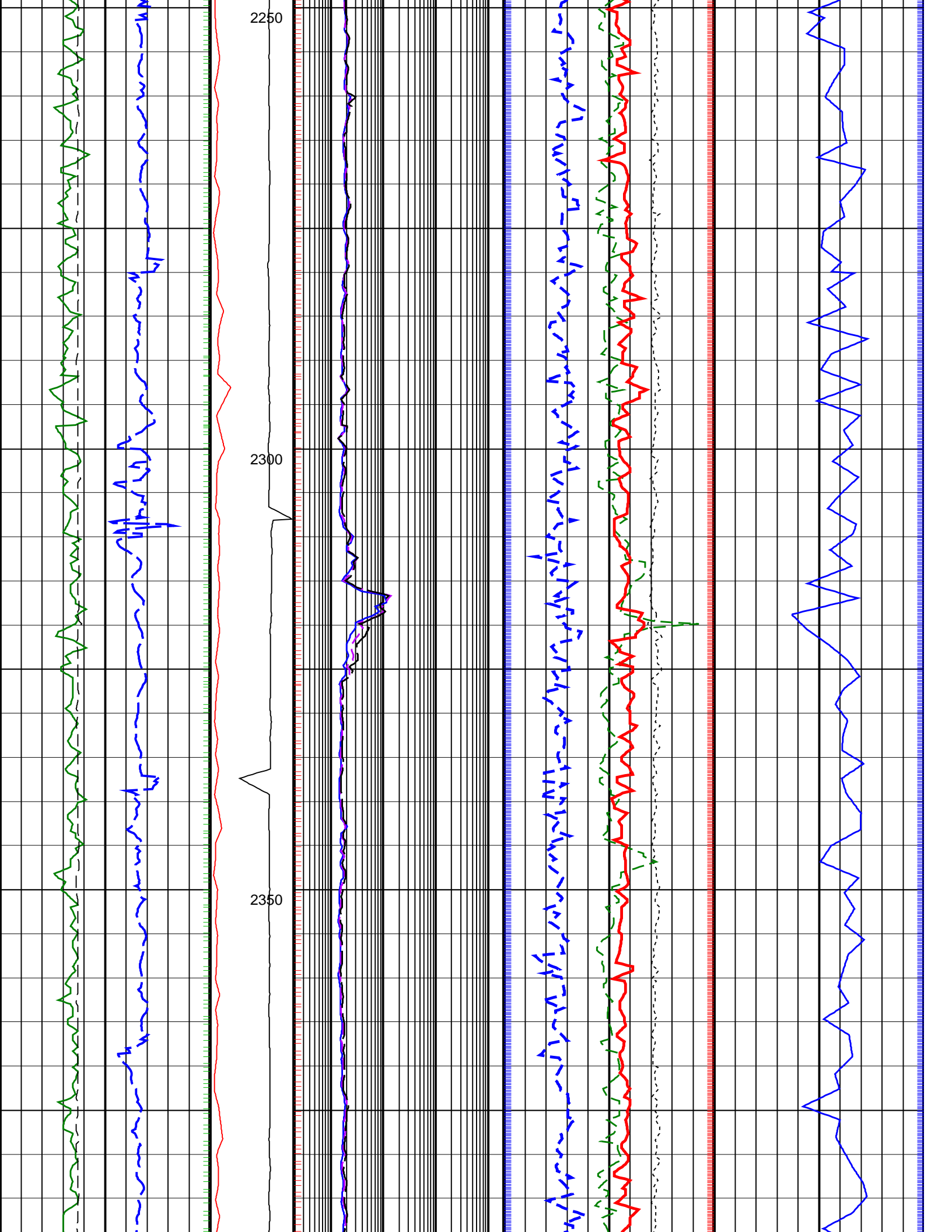


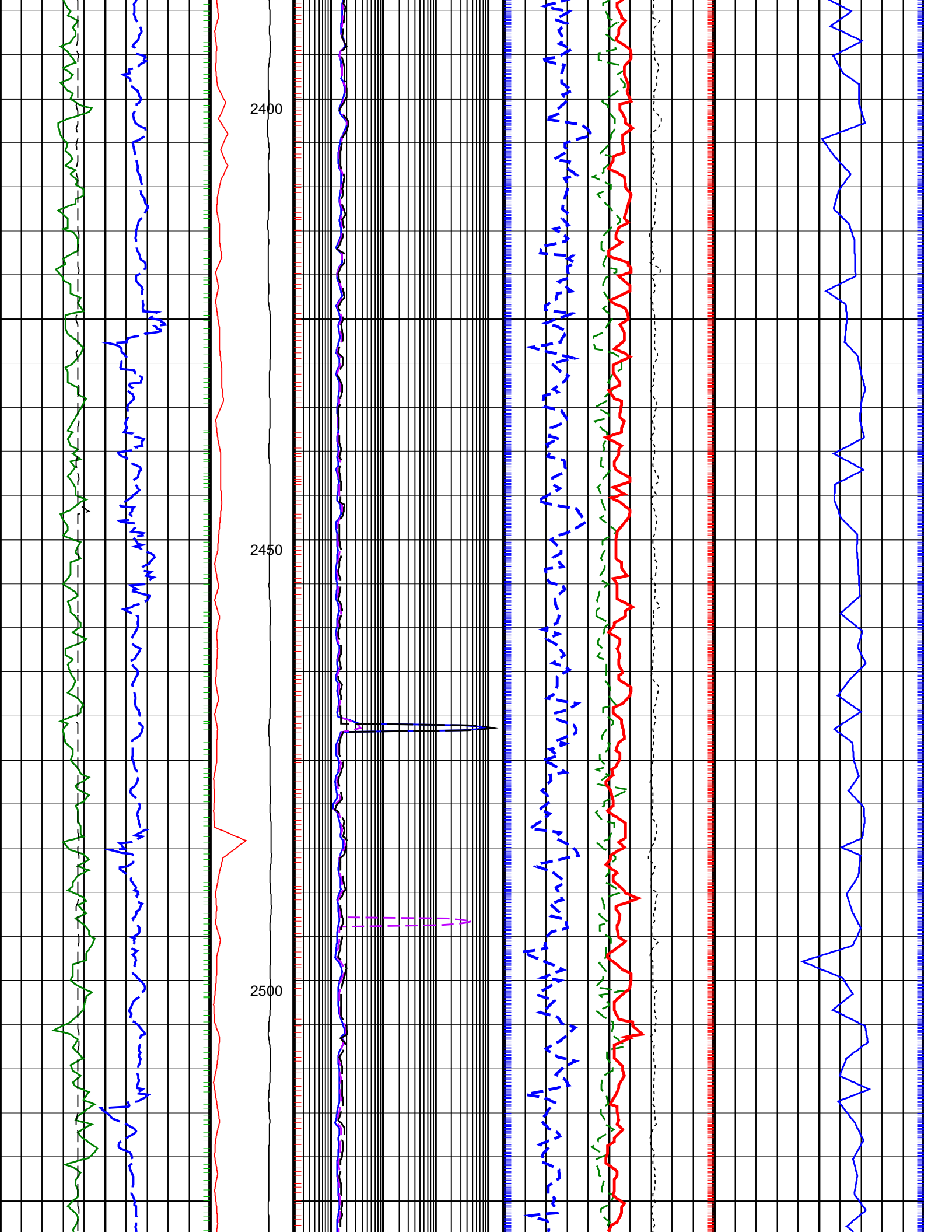


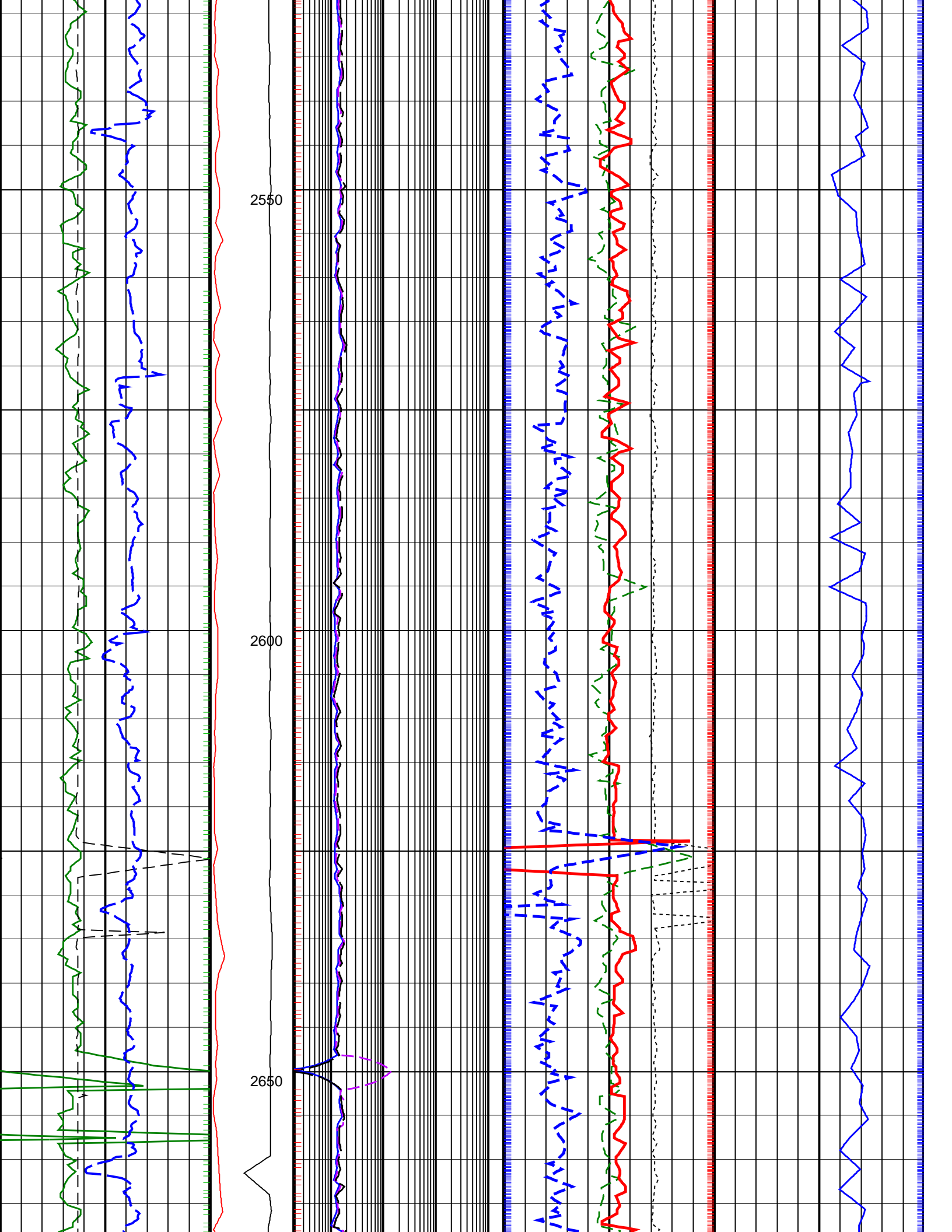


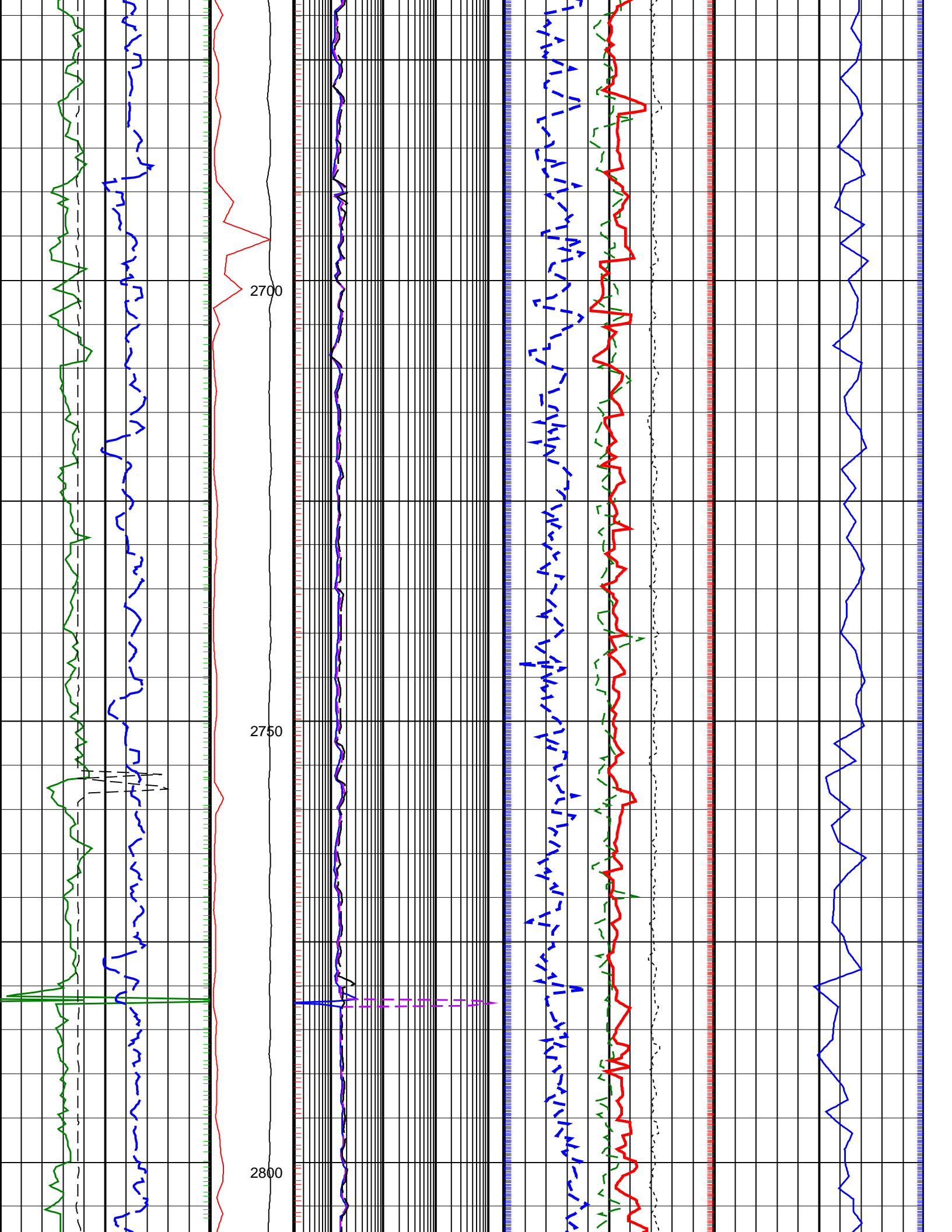


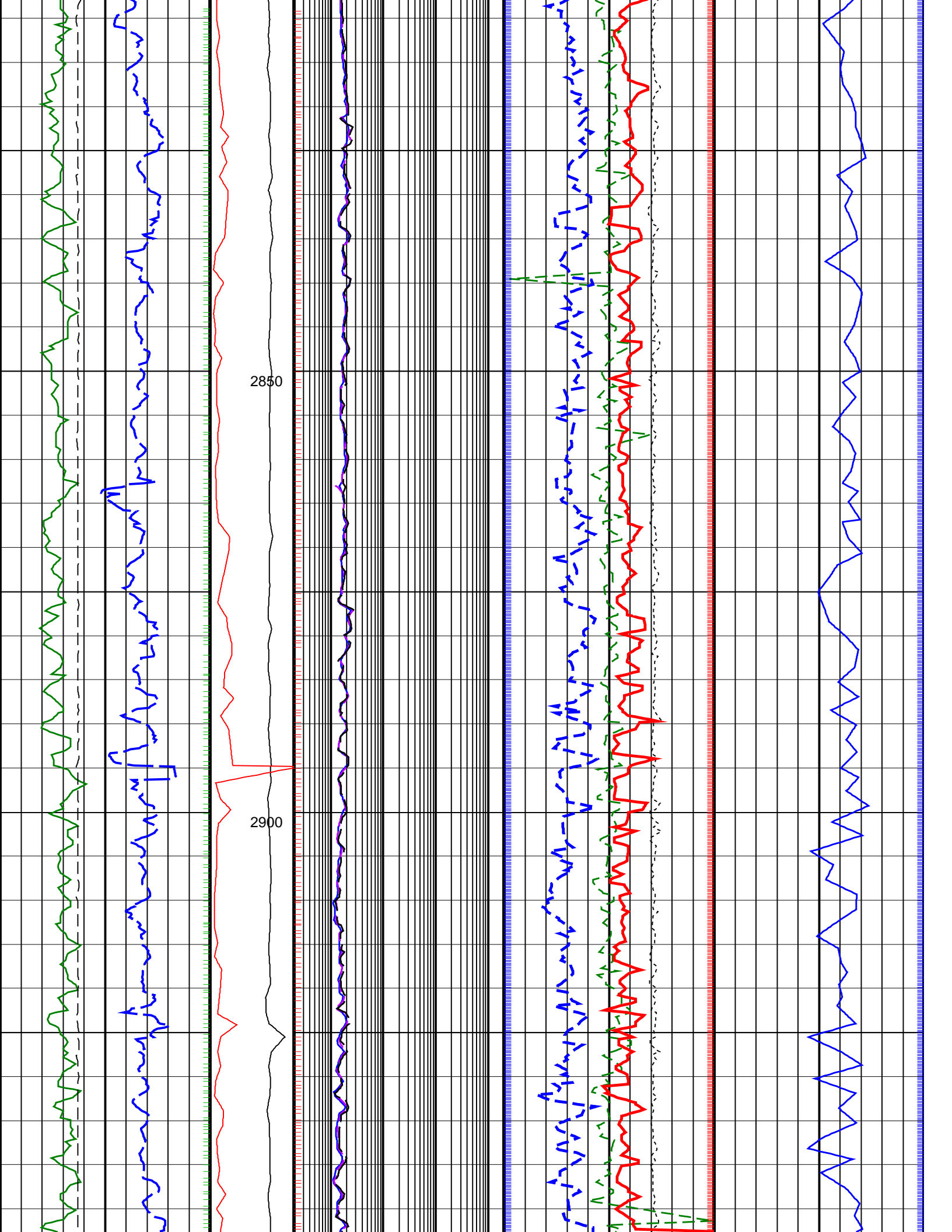


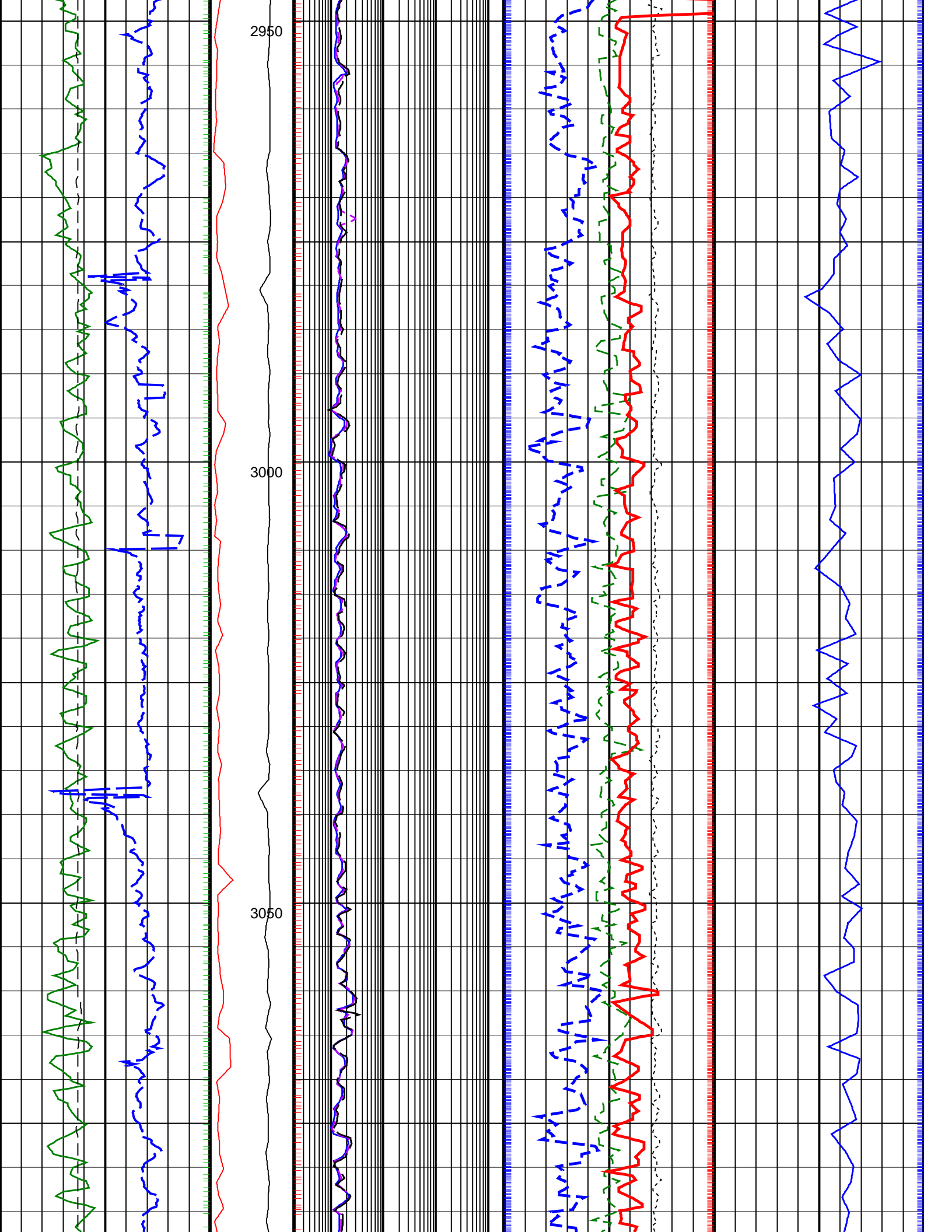




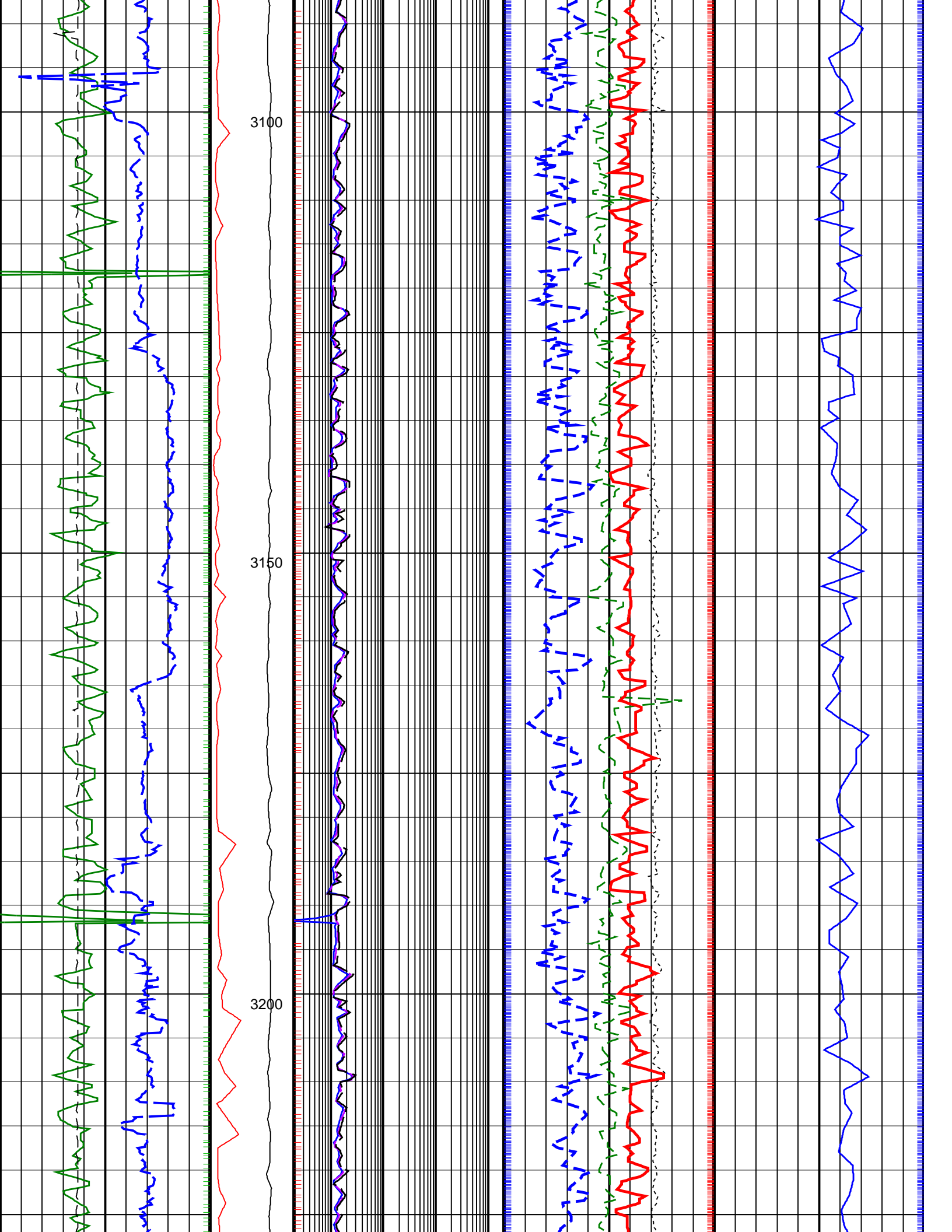


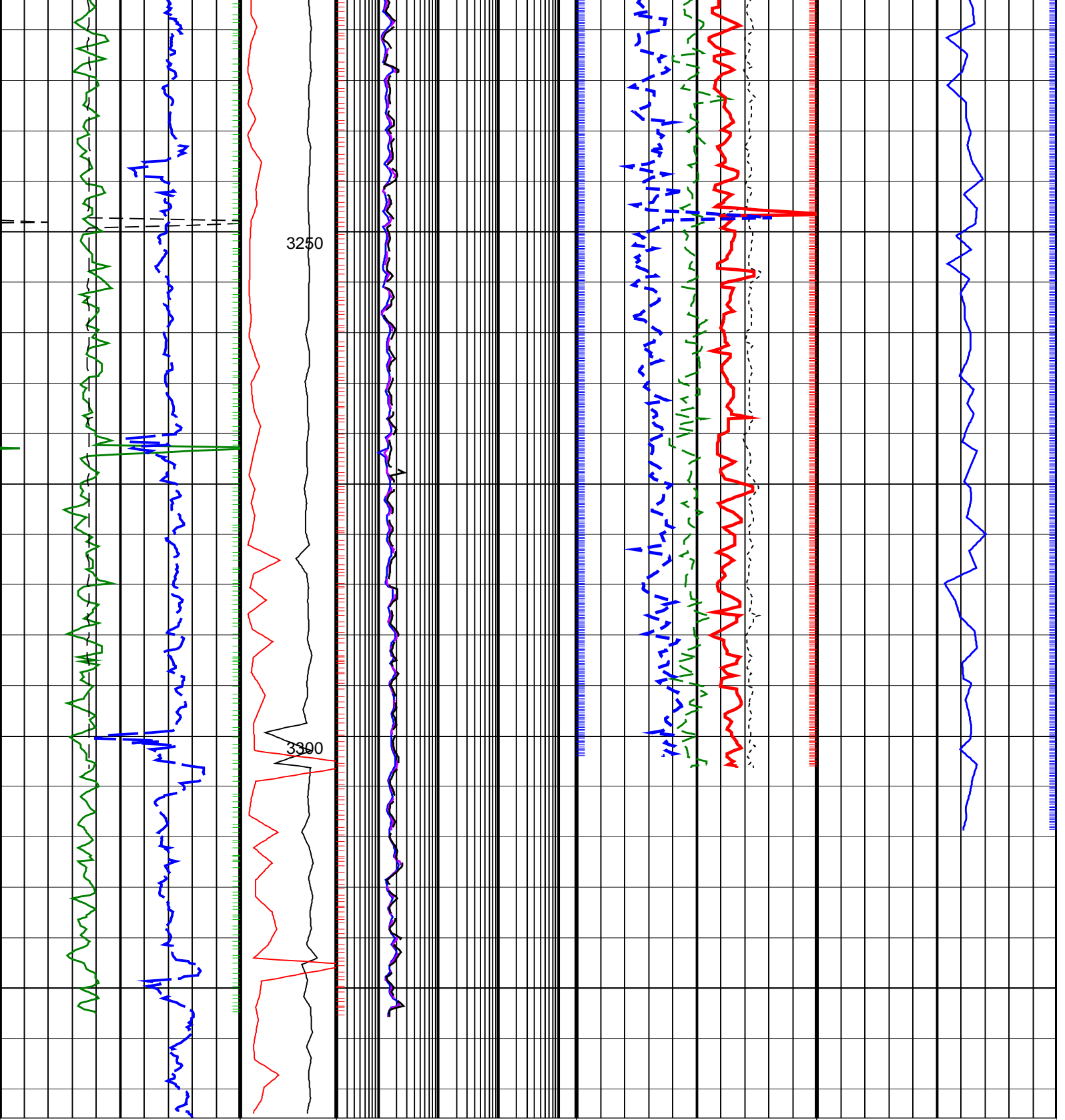












<p><b>ROP*5 (ROP5)</b> (M/HR)</p> <p>200 0</p>	<p><b>PKPK_RPM (Stick_RT)</b> (RPM)</p> <p>0 250</p>	<p><b>ARC BHCorr Phase-Shift Resistivity 16-in. at 2 MHz, Real-Time (P16H_RT)</b> (OHMM)</p> <p>0.2 2000</p>	<p><b>Bulk Density Correction, Bottom, Real-Time Computed Downhole (DRHB_DH_RT)</b> (G/C3)</p> <p>-0.75 0.25</p>	<p><b>Delta-T Compressional, Real-Time (DTCO_RT)</b> (US/M)</p> <p>600 100</p>
<p><b>Density Caliper Average, Real-Time (DCAV_RT)</b> (IN)</p> <p>6 16</p>	<p><b>MWD Collar RPM (CRPM_RT)</b> (RPM)</p> <p>0 250</p>	<p><b>ARC BHCorr Phase-Shift Resistivity 28-in. at 2 MHz, Real-Time (P28H_RT)</b> (OHMM)</p> <p>0.2 2000</p>	<p><b>Photoelectric Factor, Bottom, Real-Time (PEB_RT)</b> (----)</p> <p>0 10</p>	
<p><b>ARC Gamma Ray, Real-Time (ARC_GR_RT)</b> (GAPI)</p> <p>0 200</p>		<p><b>ARC BHCorr Phase-Shift Resistivity 40-in. at 2 MHz, Real-Time (P40H_RT)</b> (OHMM)</p> <p>0.2 2000</p>	<p><b>Bulk Density, Bottom, Real-Time Computed Downhole (ROBB_DH_RT)</b> (G/C3)</p> <p>1.85 2.85</p>	

Thermal Neutron Porosity,  
Real-Time (TNPH\_ADN\_RT)  
0.45 (V/V) -0.15

PIP SUMMARY

arcVISION Gamma Ray

Delta-T Compressional, Real-Time

Resistivity

ROBB (Density Bottom)

TNPH (Thermal Neutron Porosity)

IDEAL Version: ID14\_0C\_26

IDF

ARC6A-AA  
SON675

Id14\_0c\_26  
Id14\_0c\_26

MWD\_10  
ADN

Id14\_0c\_26  
Id14\_0c\_26