

DRILLING DATA LOG

WELL : TREFOIL-2



FROM (m): 930

TO (m): 2280

SCALE: 1/ 500

Country : AUSTRALIA	Latitude : 39 53' 07.93" S	762mm (30") at (m MDRT) : 153.00	Spud Date : 06-10-2009
Region : TASMANIA	Longitude : 145 22' 14.62" E	340mm (13 3/8") at (m MDRT) : 930.00	Total Depth Date :
Field : TREFOIL	X (m) : 360690.389	245mm (9 5/8") at (m MDRT) :	Total Depth (m MDRT) :
Permit : T/18P	Y (m) : 5583676.588		Total Depth (m TVSS) :
Well Type : APPRAISAL	RT-Sealevel (m MSL) : 26		Status :
Rig Name : KAN TAN 4	RT-Seabed (m) : 95		

ABBREVIATIONS

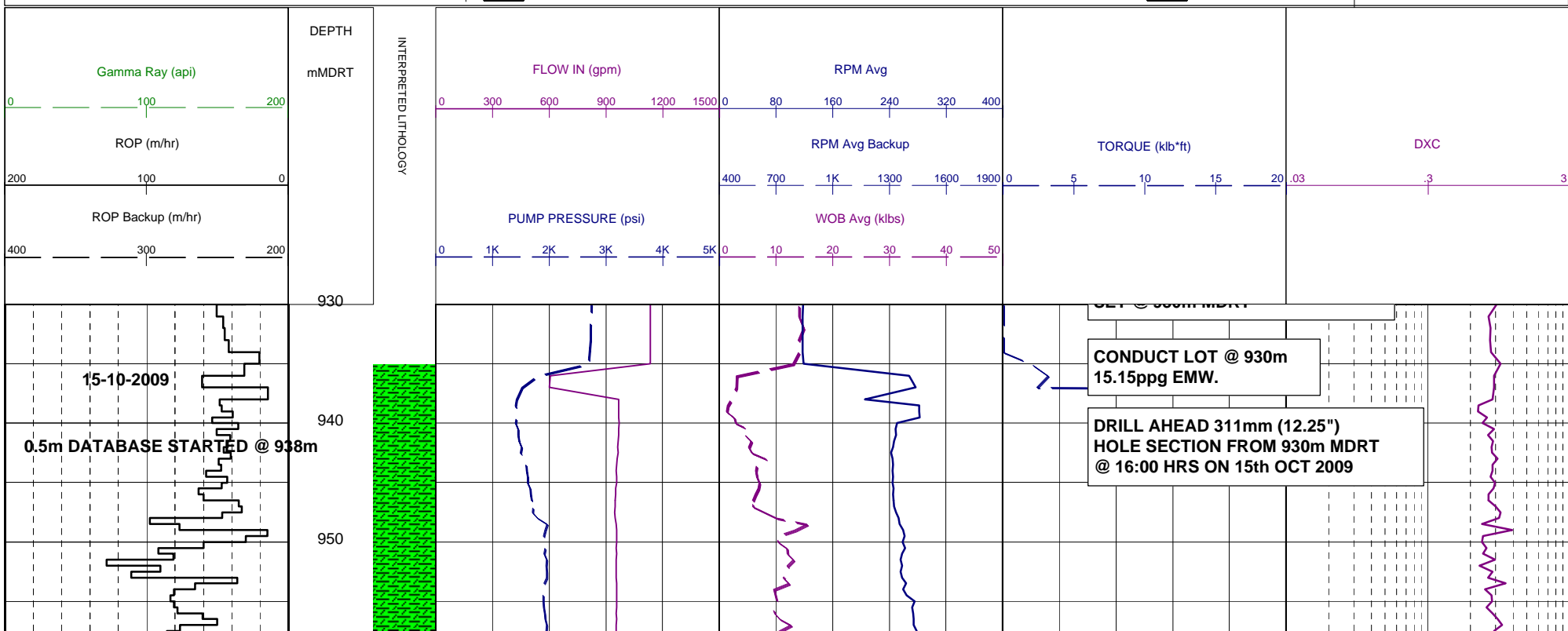
MW MUD WEIGHT	NB NEW BIT
FV FUNNEL VISCOSITY	RR RERUN BIT
PV PLASTIC VISCOSITY	CB CORE BIT
YP YIELD POINT	WOB WEIGHT ON BIT
FC FILTER CAKE	RPM REVS PER MINUTE
SOL SOLIDS	FLC FLOW CHECK
CR CIRCULATE RETURNS	WL FILTRATE
SD SAND - %	PR POOR RETURNS
S SALINITY - PPM	NR NO RETURNS
RM MUD RESISTIVITY	BG BACKGROUND GAS
RMF MUD FILTRATE	TG TRIP GAS
C CARBIDE TEST	STG SHORT TRIP GAS
LAT LOGGED AFTER TRIP	CG CONNECTION GAS
DS DEVIATION SURVEY	SG SWAB GAS
	SVG SURVEY GAS

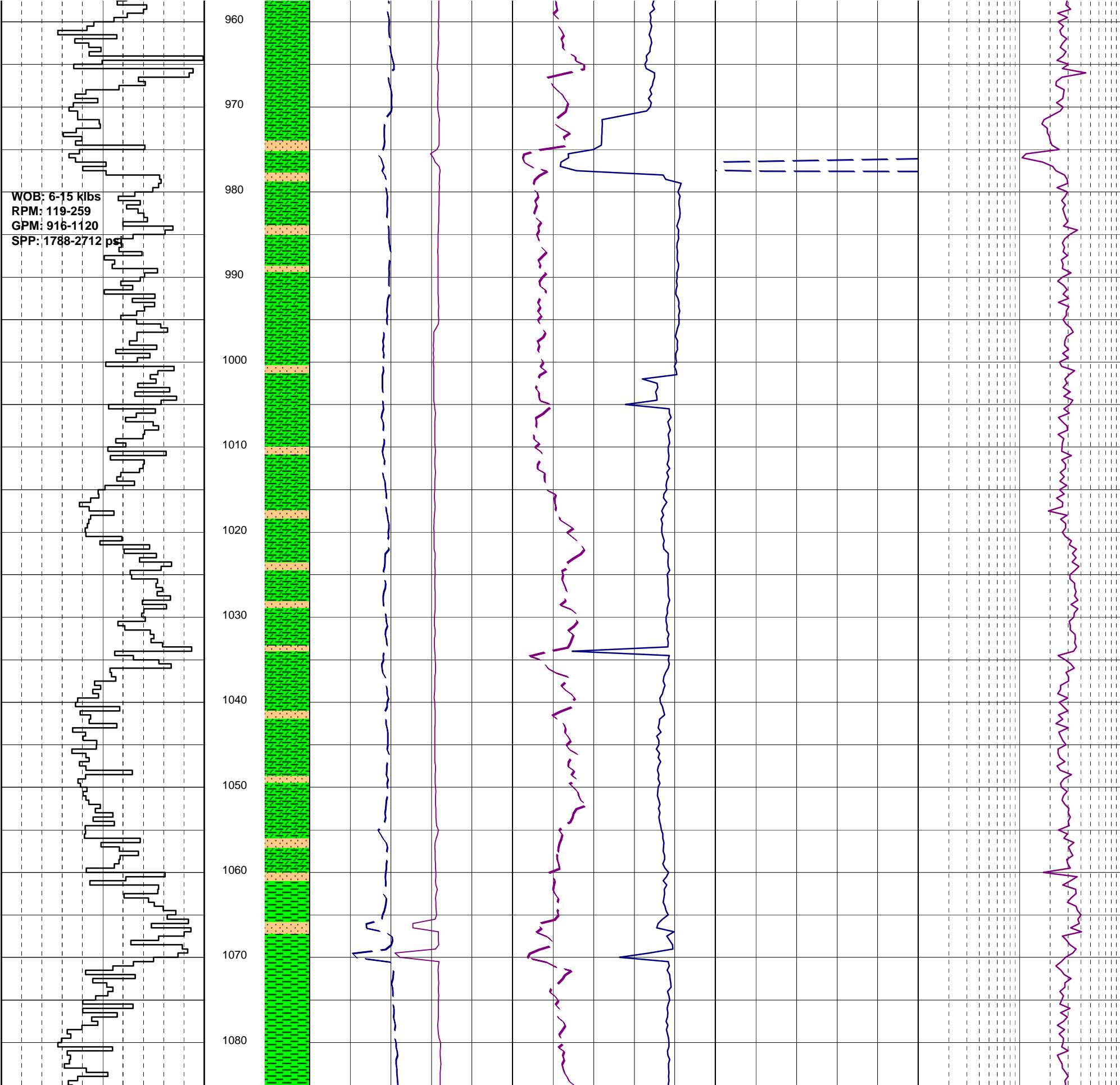
LITHOLOGY LEGEND

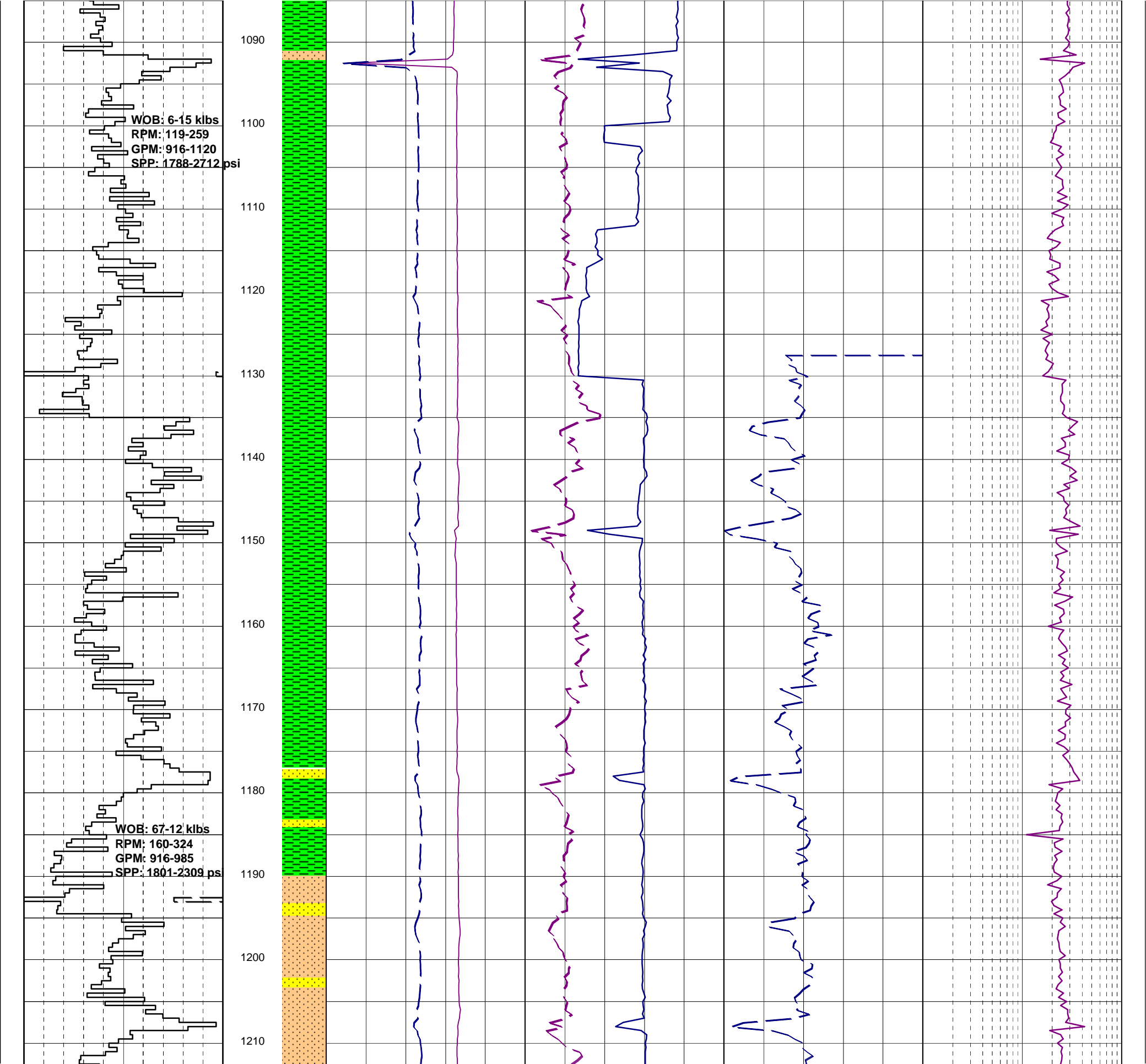
Dolomite	Claystone	Argil Siltstone	Calcareous
Calcurudite	Siltstone	Sandy Siltstone	Dolomitic
Calcarenite	Sandstone	Calcareous Siltstone	Fossils
Calcsiltite	Coal	Argil Sandstone	Foraminiferae
Calclutite	Intrusive Volcanics	Calcareous sandstone	Carbonaceous
Sandy claystone	Volcaniclastics	Dolomitic sandstone	Chert
Silty claystone	tuff	Silty sandstone	Pyrite
Calcareous Claystone	Cement		Glauconite
Argil Calclutite			Mica

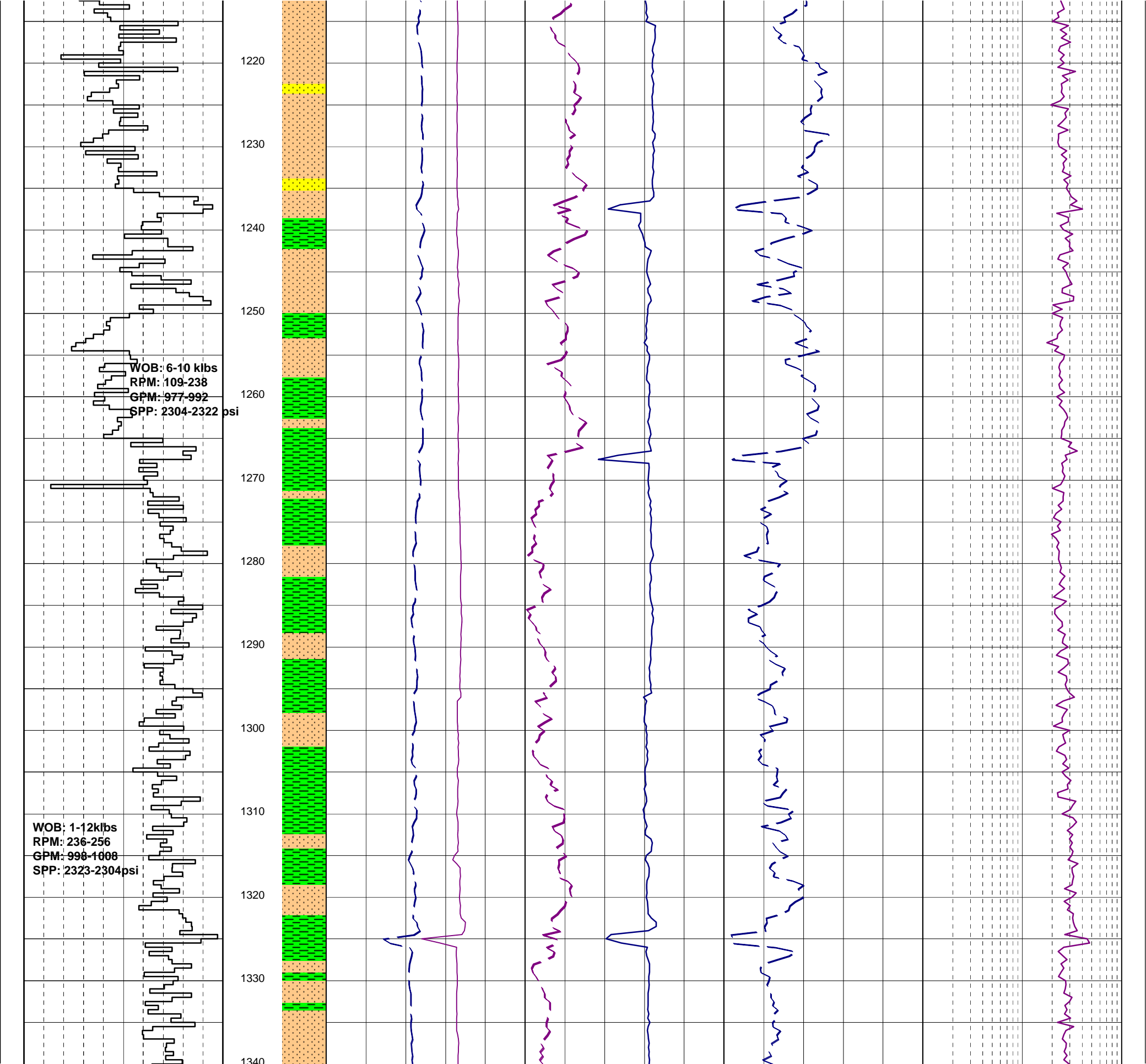
ENGINEERING

Test
FIT or LOT
Mud loss
Mud gain
Deviation survey
Core
Casing shoe
Calcimetry



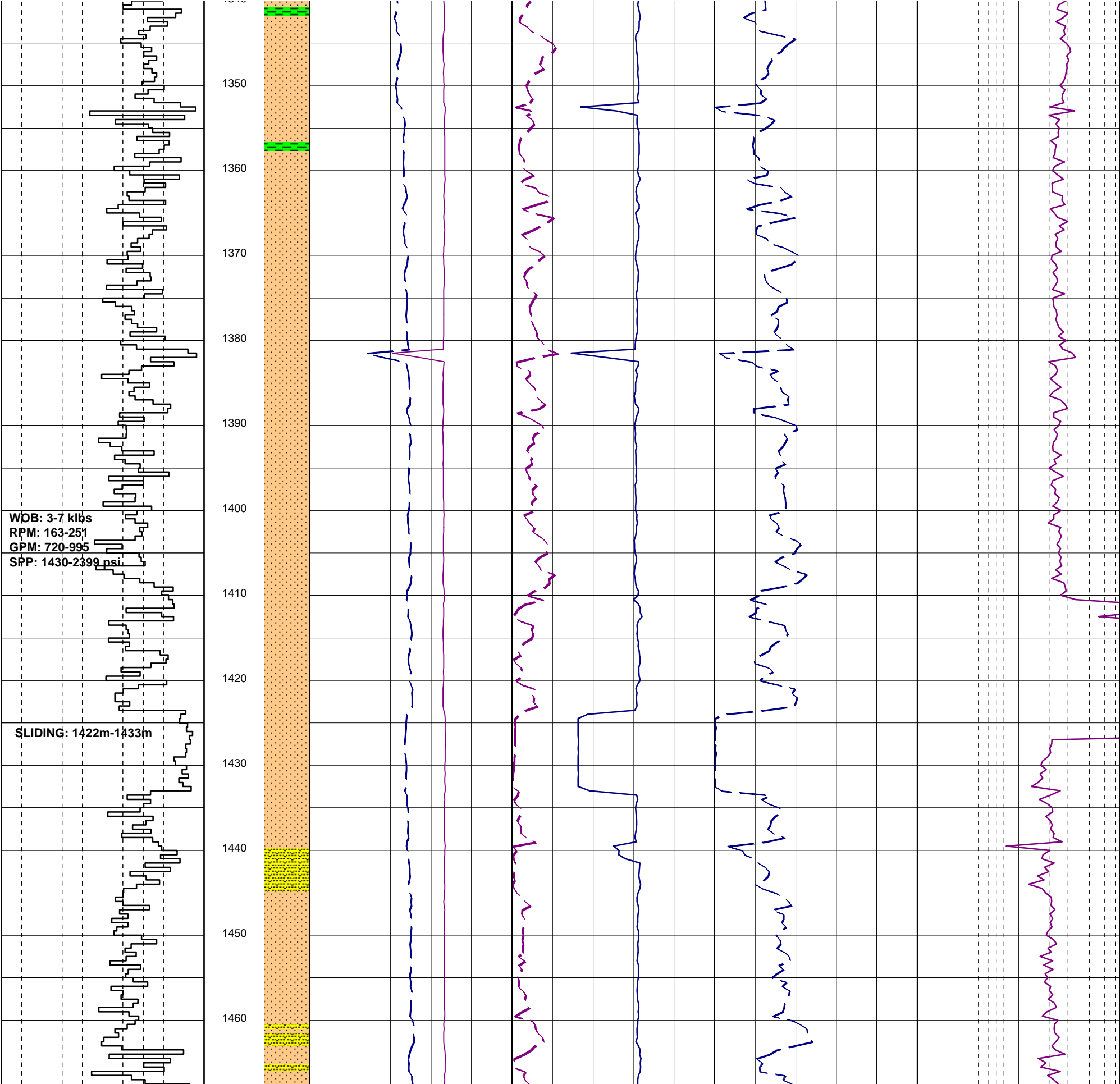


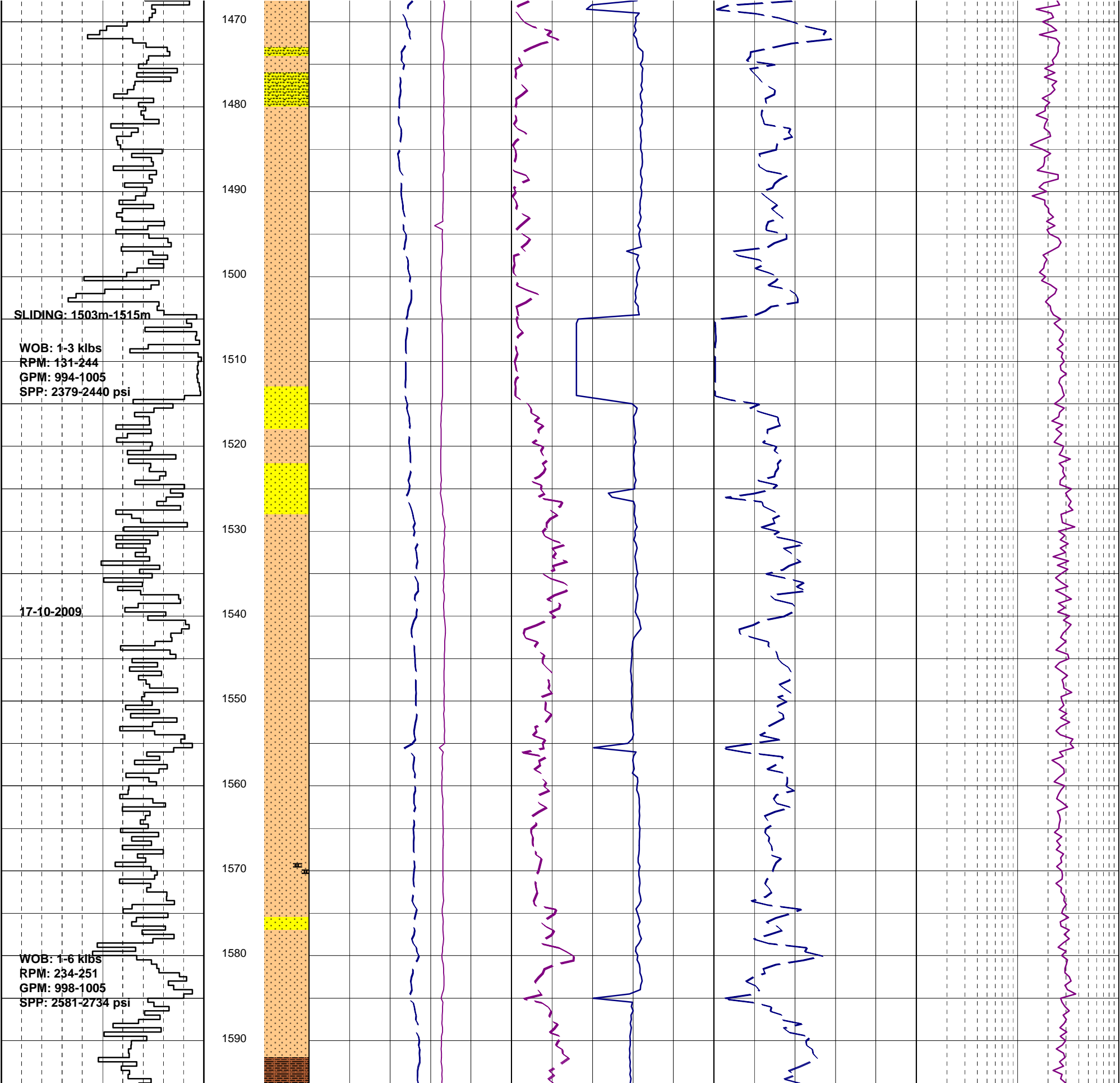


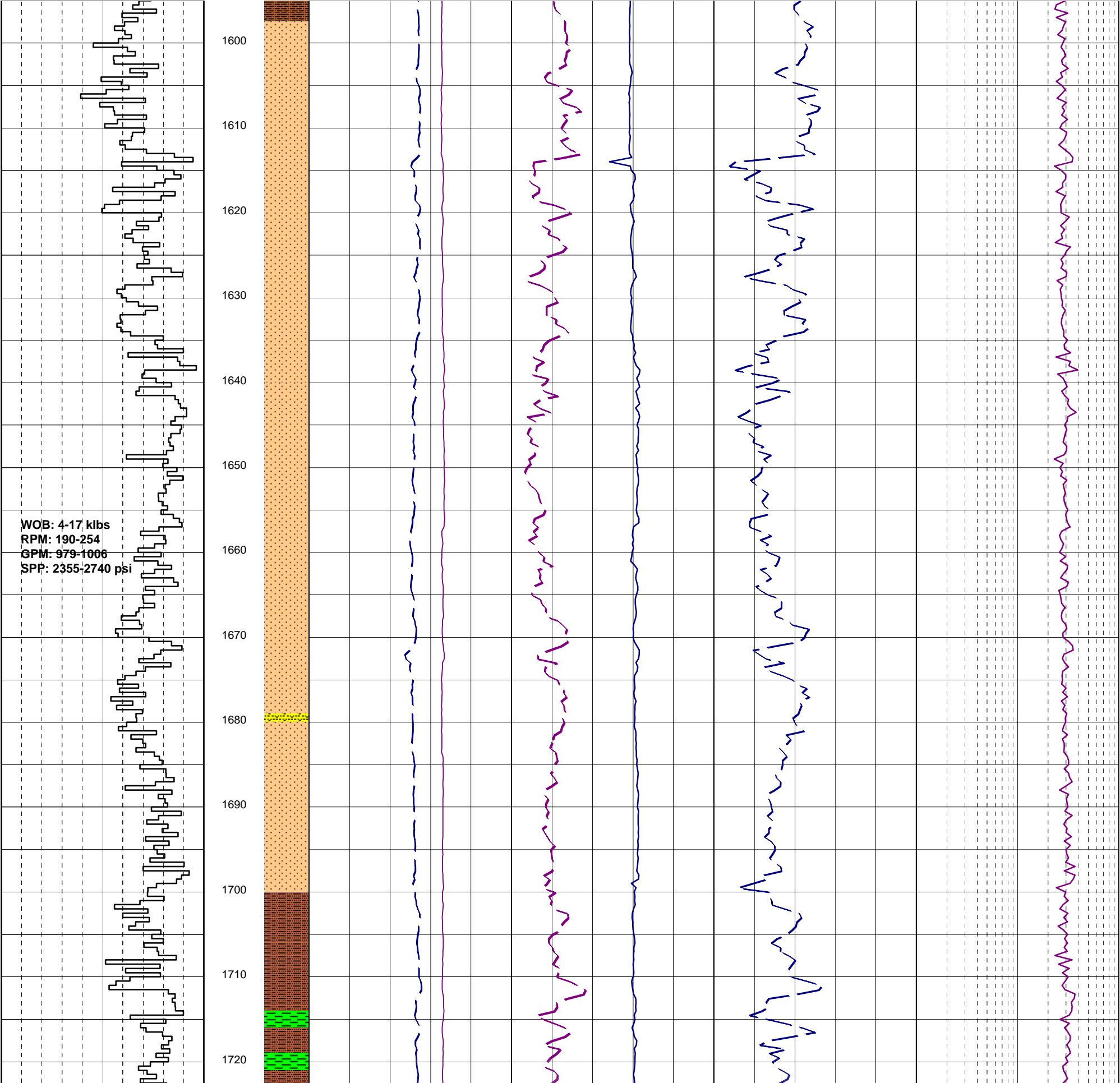


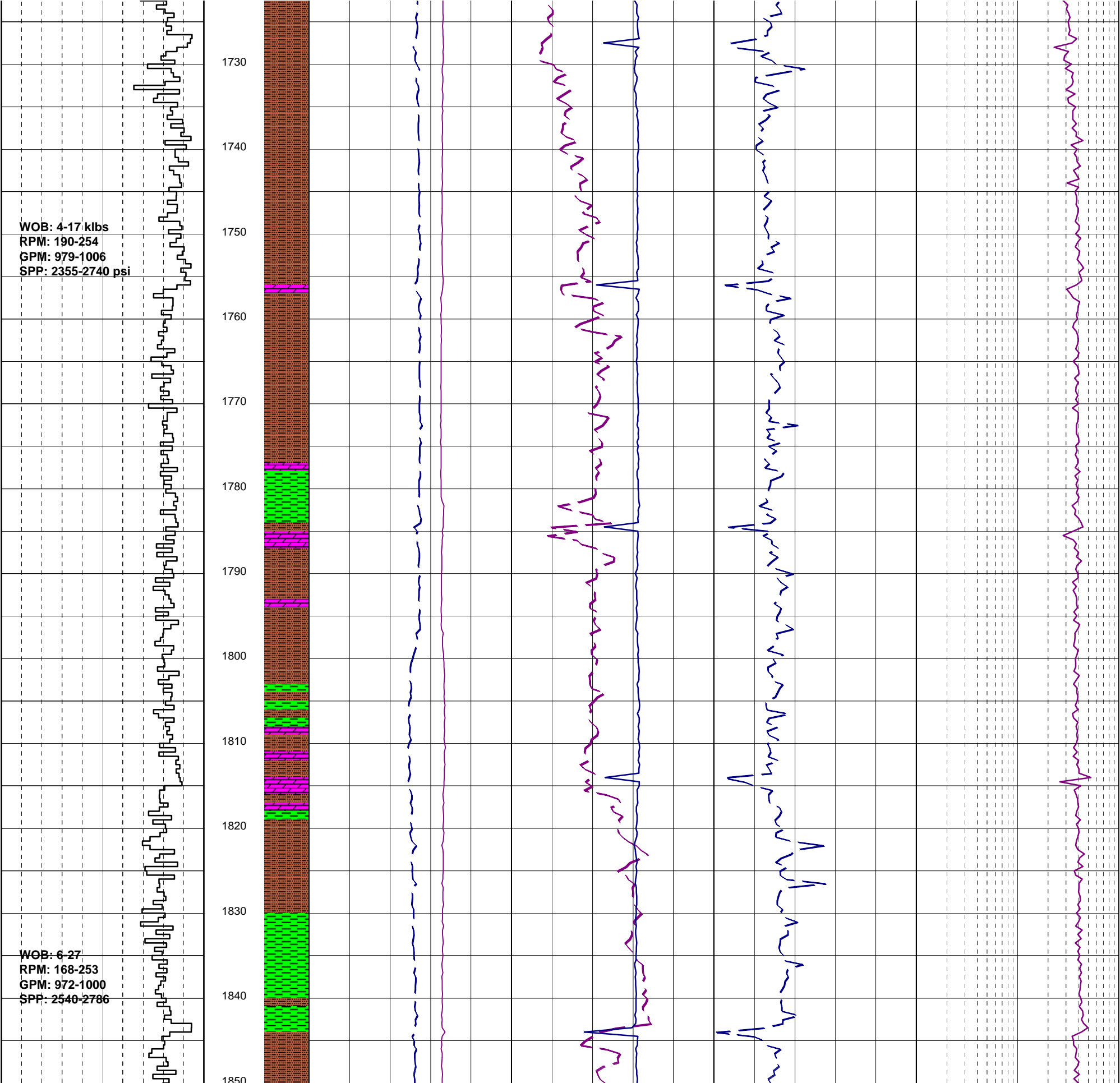
WOB: 6-10 kbs
RPM: 109-238
GPM: 977-992
SPP: 2304-2322 psi

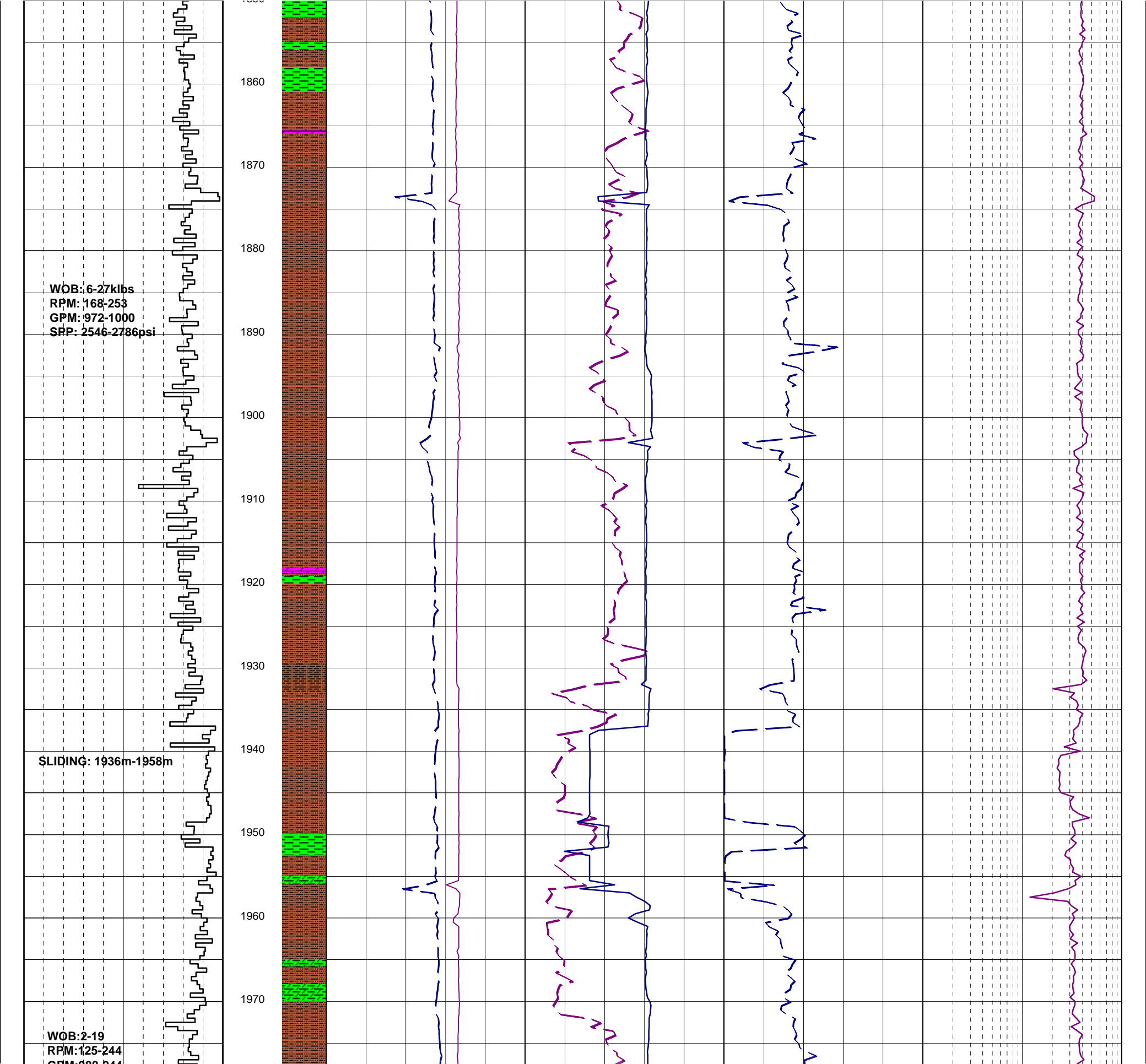
WOB: 1-12kbs
RPM: 236-256
GPM: 998-1008
SPP: 2323-2304psi







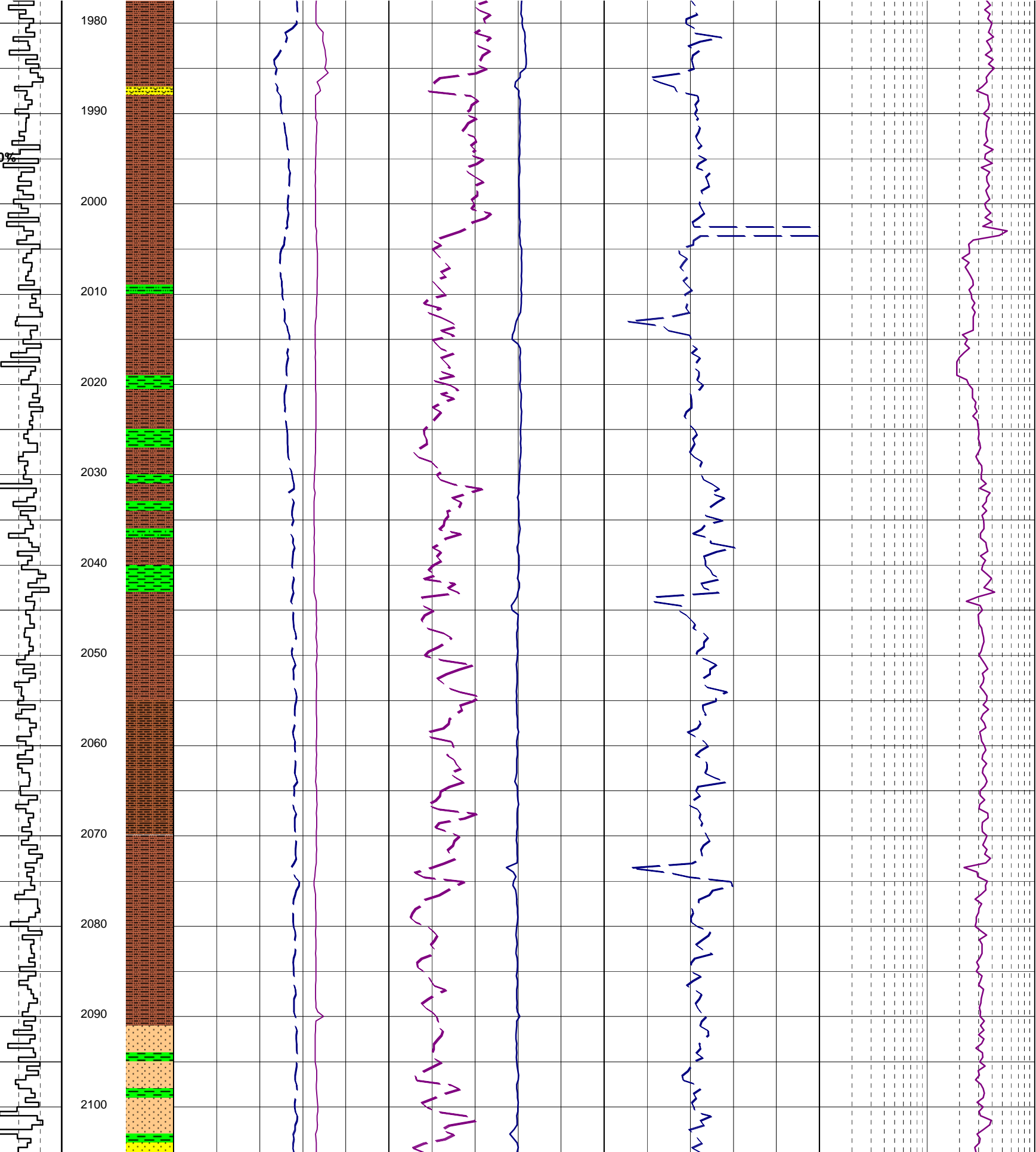


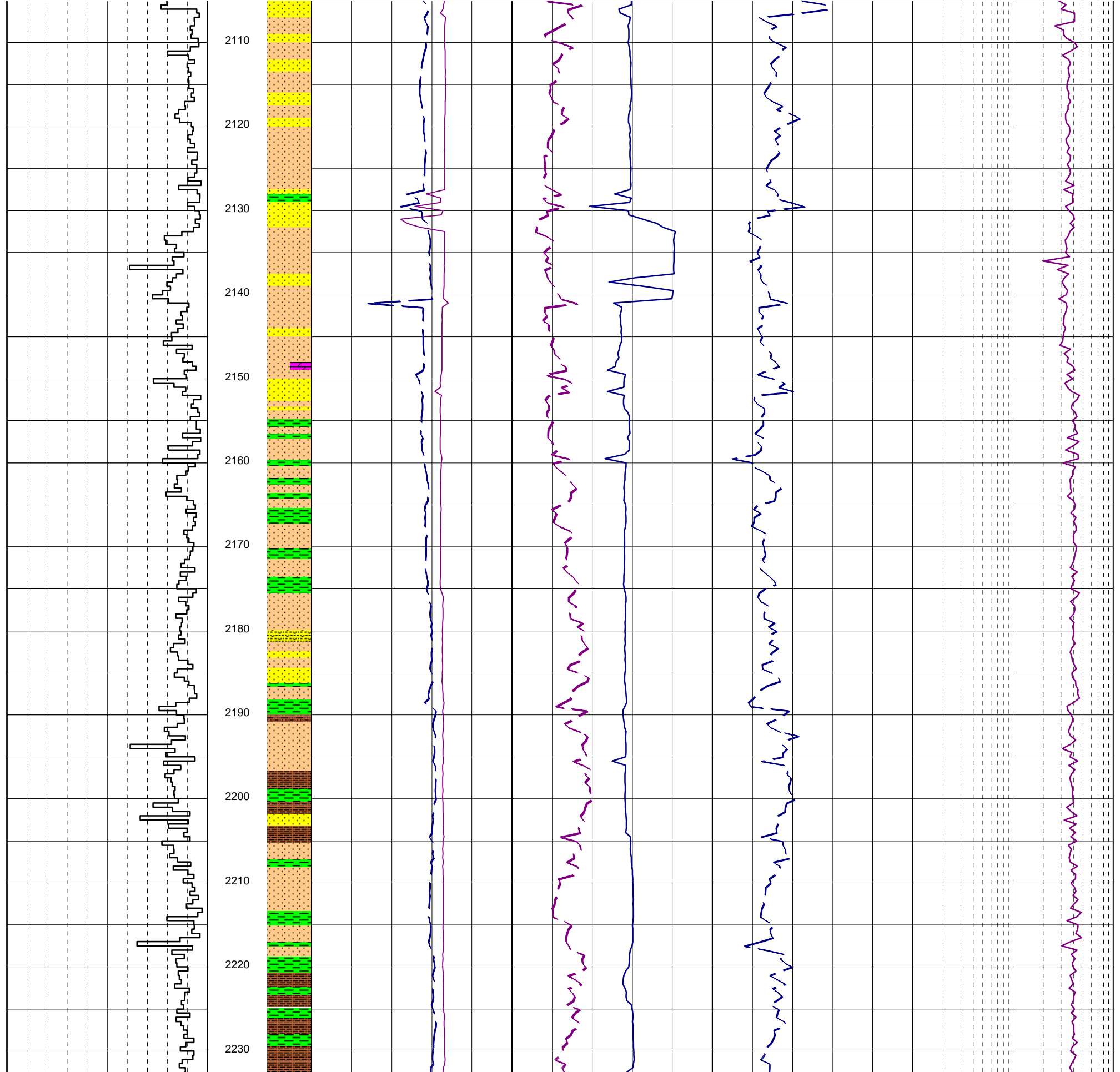


GPM: 968-244
SPP: 2232-2690psi

MW: 9.0 FV: 54
PV/YP: 16/29
FC: 1/2
SOL: 2.8% SAND: 0.30%
CL: 39,000 mg/l

WOB: 3-12 klbs
RPM: 239-242
GPM: 980-997
SPP: 2776-2826 psi





WOB: 7-8klbs
RPM: 234-241
GPM: 981-998
SPP: 2445-2785 psi

2240

2250

2260

2270

2280

