

DRILLING DATA LOG

WELL : TREFOIL-2

FROM (m): 2510

TO (m): 2990

SCALE: 1/ 500

		POSITION	CASING SHOE SIZE / DEPTH				
Country	: AUSTRALIA	Latitude	: 39 53' 07.93" S	762mm (30") at (m MDRT)	: 153.00	Spud Date	: 06-10-2009
Region	: TASMANIA	Longitude	: 145 22' 14.62" E	340mm (13 3/8") at (m MDRT)	: 930.00	Total Depth Date	:
Field	: TREFOIL	X (m)	: 360690.389	245mm (9 5/8") at (m MDRT)	: 2520.00	Total Depth (m MDRT)	:
Permit	: T/18P	Y (m)	: 5583676.588			Total Depth (m TVSS)	:
Well Type	: APPRAISAL	RT-Sealevel (m MSL)	: 26			Status	:
Rig Name	: KAN TAN 4	RT-Seabed (m)	: 95				

ABBREVIATIONS

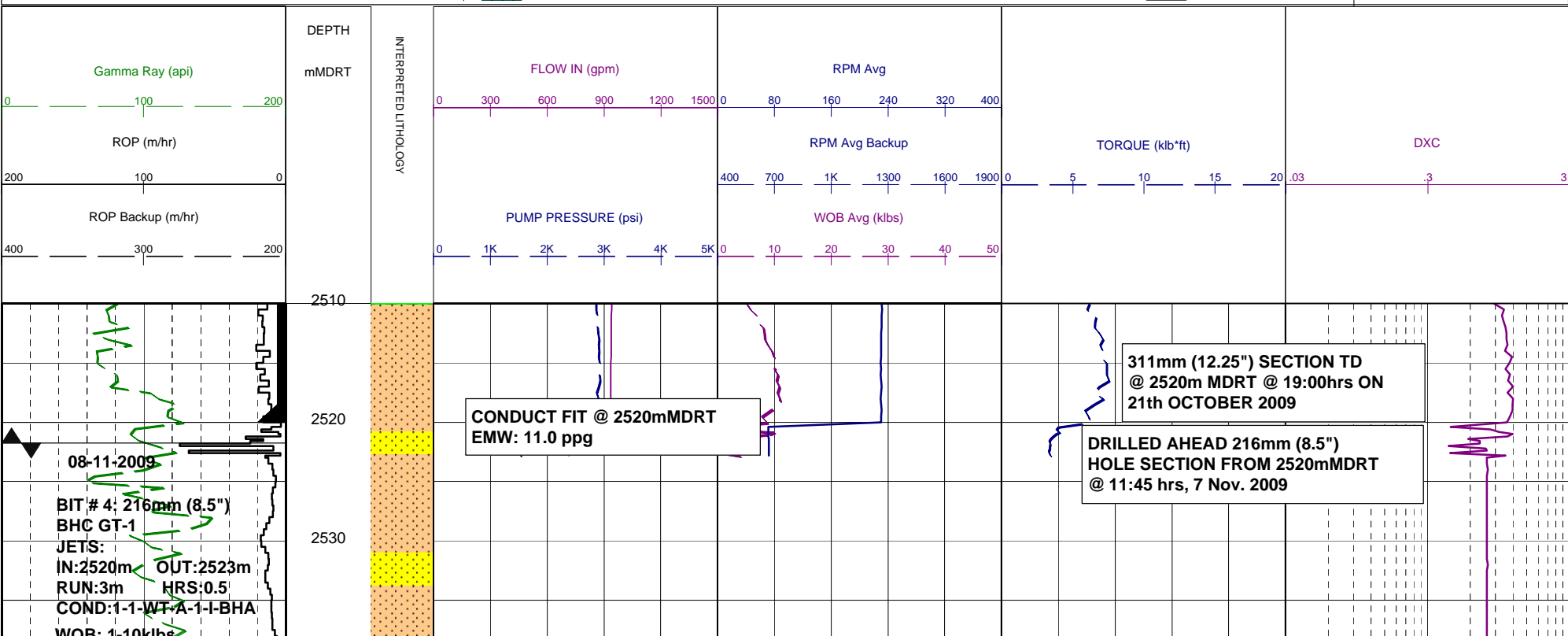
MW MUD WEIGHT	NB NEW BIT
FV FUNNEL VISCOSITY	RR RERUN BIT
PV PLASTIC VISCOSITY	CB CORE BIT
YP YIELD POINT	WOB WEIGHT ON BIT
FC FILTER CAKE	RPM REVS PER MINUTE
SOL SOLIDS	FLC FLOW CHECK
CR CIRCULATE RETURNS	WL FILTRATE
SD SAND - %	PR POOR RETURNS
S SALINITY - PPM	NR NO RETURNS
RM MUD RESISTIVITY	BG BACKGROUND GAS
RMF MUD FILTRATE	TG TRIP GAS
C CARBIDE TEST	STG SHORT TRIP GAS
LAT LOGGED AFTER TRIP	CG CONNECTION GAS
DS DEVIATION SURVEY	SG SWAB GAS
	SVG SURVEY GAS

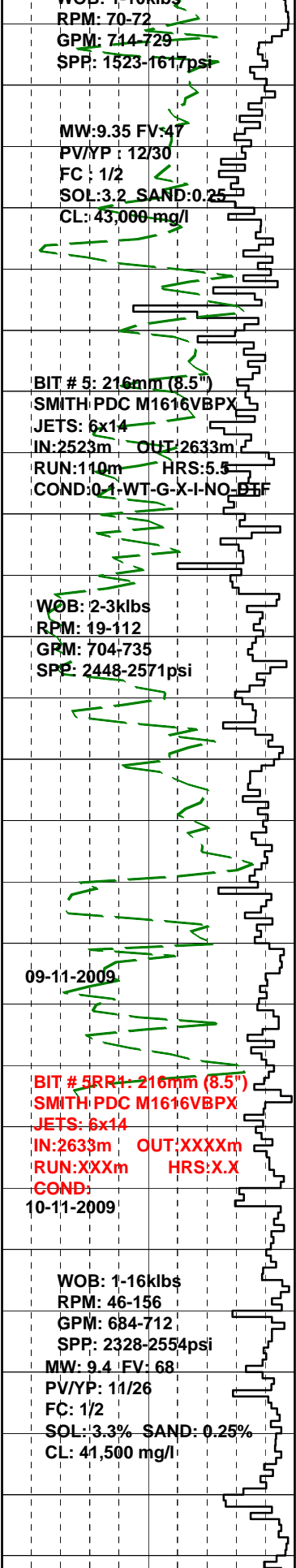
LITHOLOGY LEGEND

	Dolomite		Claystone		Argil Siltstone		Calcareous
	Calcluridite		Siltstone		Sandy Siltstone		Dolomitic
	Calcarenite		Sandstone		Calcareous Siltstone		Fossils
	Calcsiltite		Coal		Argil Sandstone		Foraminiferae
	Calclutite		Intrusive Volcanics		Calcareous Sandstone		Carbonaceous
	Sandy Claystone		Volcaniclastics		Dolomitic Sandstone		Chert
	Silty Claystone		Tuff		Silty Sandstone		Pyrite
	Calcareous Claystone		Cement				Glauconite
	Argil Calclutite						Mica

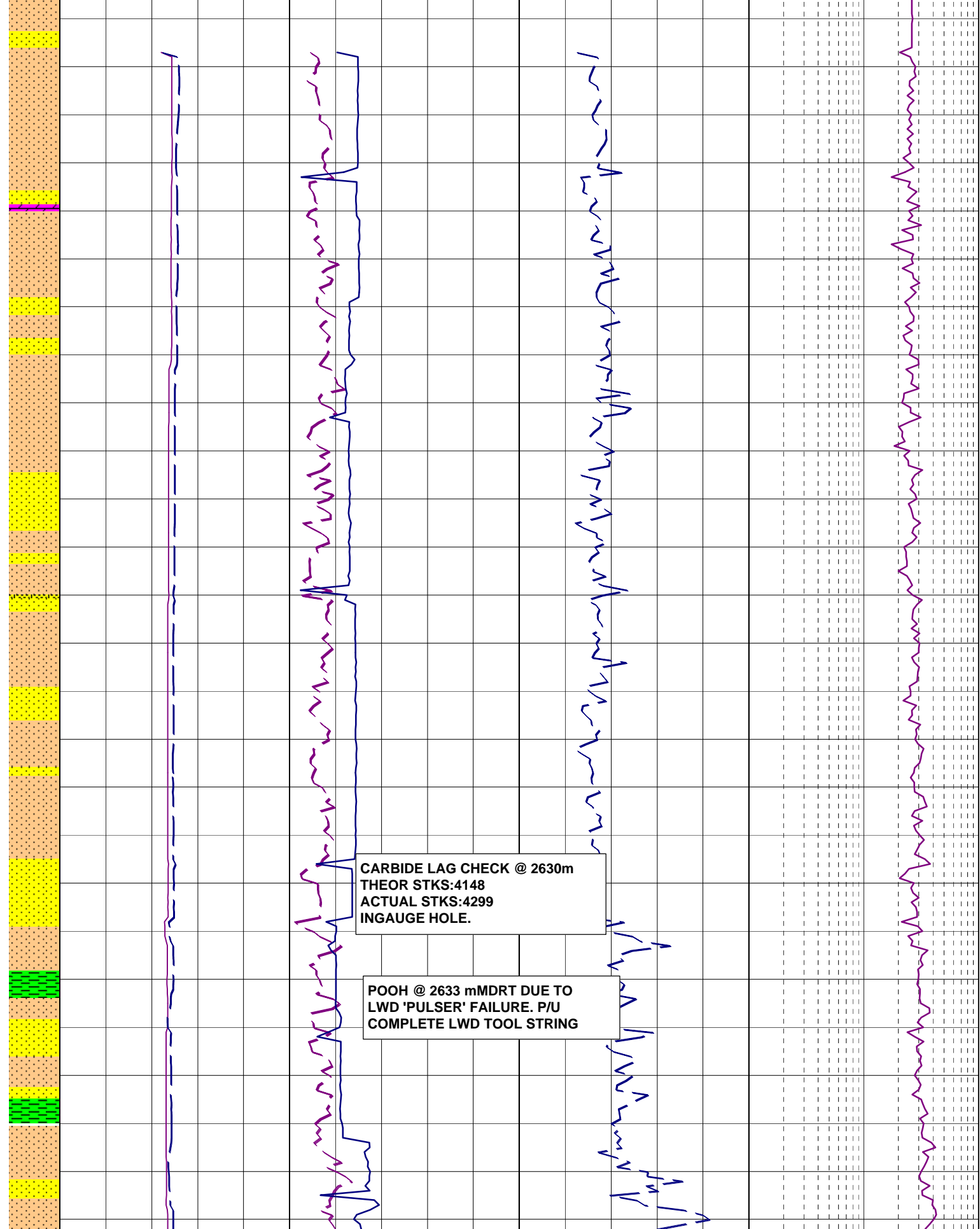
ENGINEERING

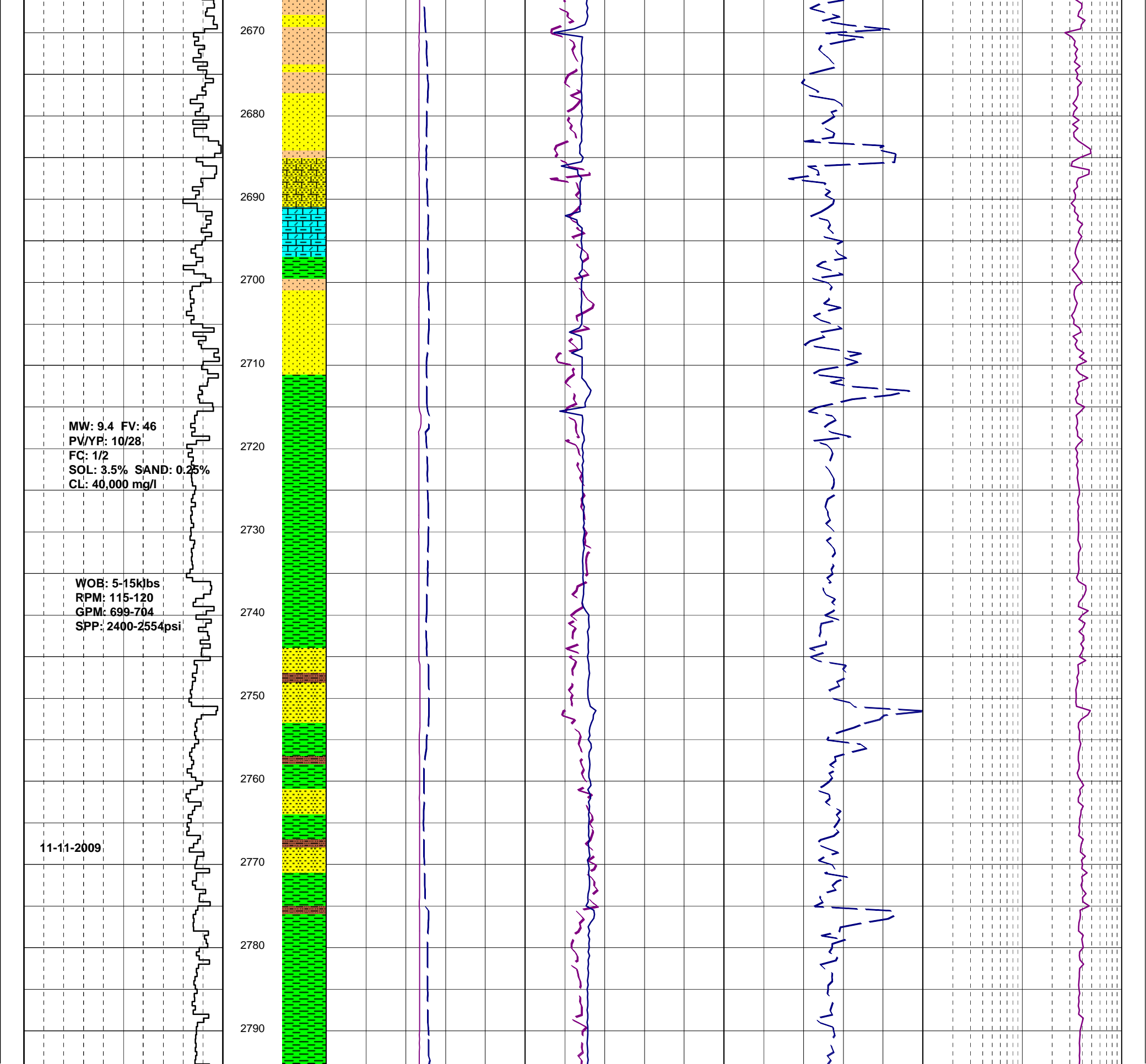
	Test
	FIT or LOT
	Mud loss
	Mud gain
	Deviation survey
	Core
	Shoe
	Calcimetry

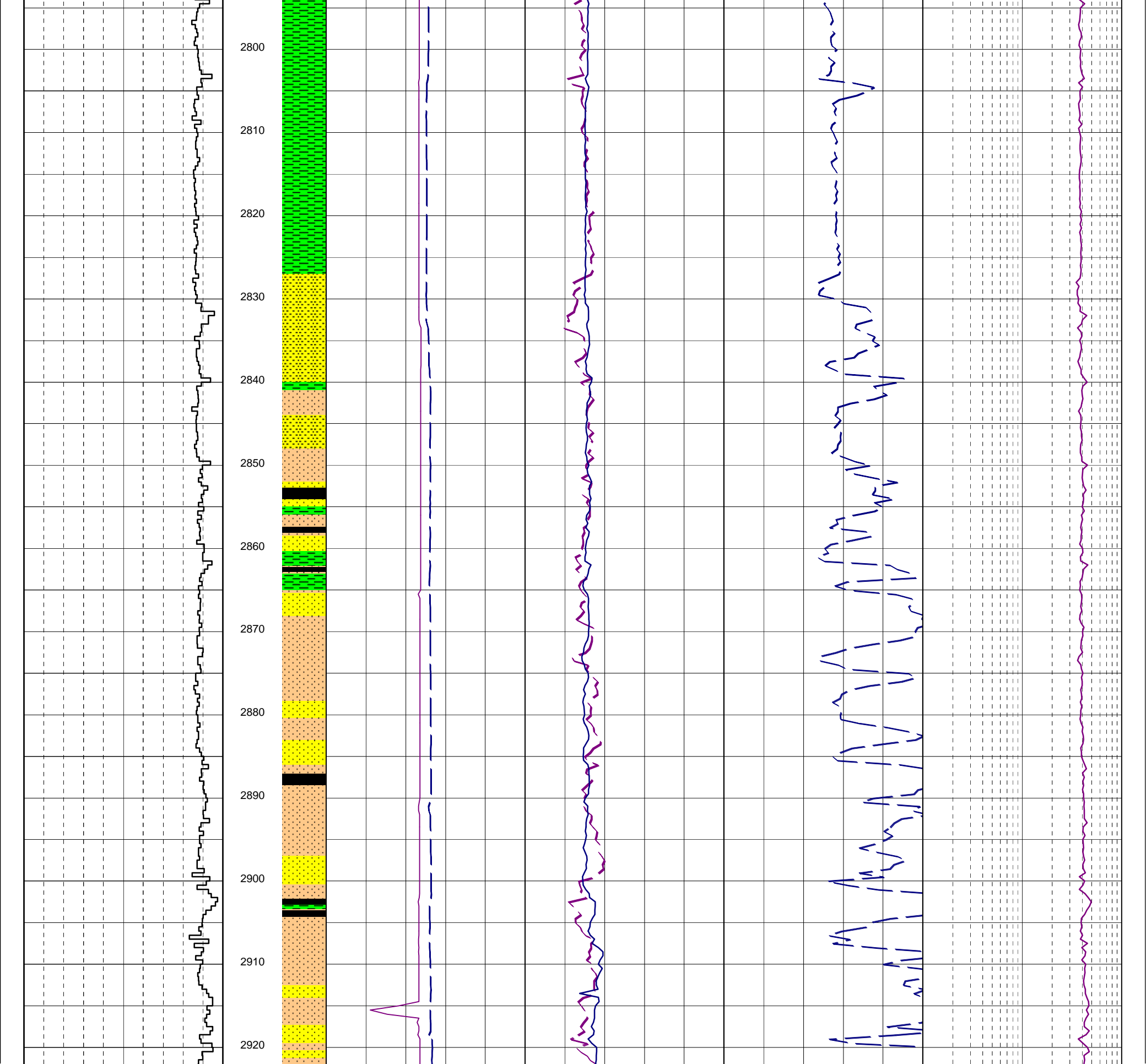




2540
2550
2560
2570
2580
2590
2600
2610
2620
2630
2640
2650
2660







WOB: 10-15
RPM: 120-130
GPM: 715-730
SPP: 2800-2850

2930
2940
2950
2960
2970
2980
2990

