



DRILLING DATA LOG

WELL : TREFOIL-2



FROM (m): 2500

TO (m): 3150

SCALE: 1/ 500

Country : AUSTRALIA
Region : TASMANIA
Field : TREFOIL
Permit : T/18P
Well Type : APPRAISAL
Rig Name : KAN TAN 4

POSITION
Latitude : 39 53' 07.93" S
Longitude : 145 22' 14.62" E
X (m) : 360690.389
Y (m) : 5583676.588
RT-Sealevel (m MSL) : 26
RT-Seabed (m) : 95

CASING SHOE SIZE / DEPTH
762mm (30") at (m MDRT) : 153.00
340mm (13 3/8") at (m MDRT) : 930.00
245mm (9 5/8") at (m MDRT) : 2520.00

Spud Date : 06-10-2009
Total Depth Date :
Total Depth (m MDRT) :
Total Depth (m TVSS) :
Status :

ABBREVIATIONS

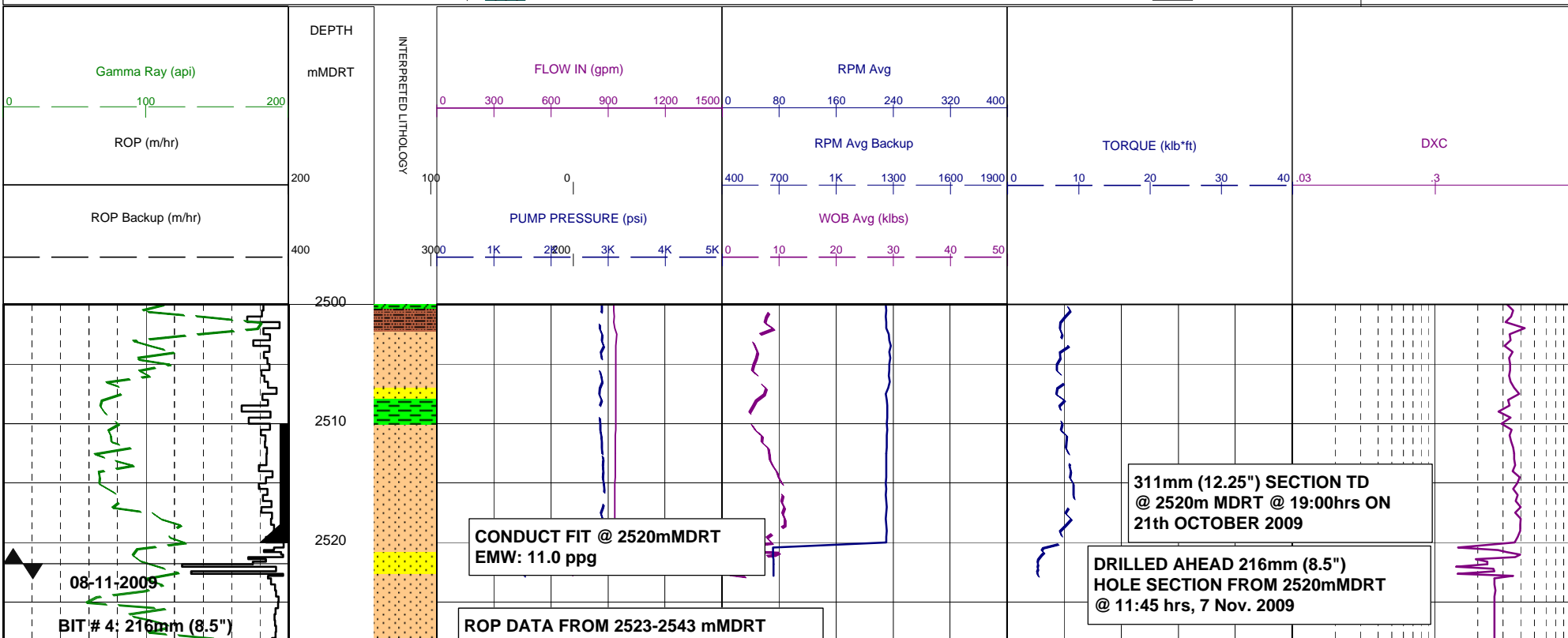
MW MUD WEIGHT
FV FUNNEL VISCOSITY
PV PLASTIC VISCOSITY
YP YIELD POINT
FC FILTER CAKE
SOL SOLIDS
CR CIRCULATE RETURNS
SD SAND - %
S SALINITY - PPM
RM MUD RESISTIVITY
RMF MUD FILTRATE
C CARBIDE TEST
LAT LOGGED AFTER TRIP
DS DEVIATION SURVEY
NB NEW BIT
RR RERUN BIT
CB CORE BIT
WOB WEIGHT ON BIT
RPM REVS PER MINUTE
FLC FLOW CHECK
WL FILTRATE
PR POOR RETURNS
NR NO RETURNS
BG BACKGROUND GAS
TG TRIP GAS
STG SHORT TRIP GAS
CG CONNECTION GAS
SG SWAB GAS
SVG SURVEY GAS

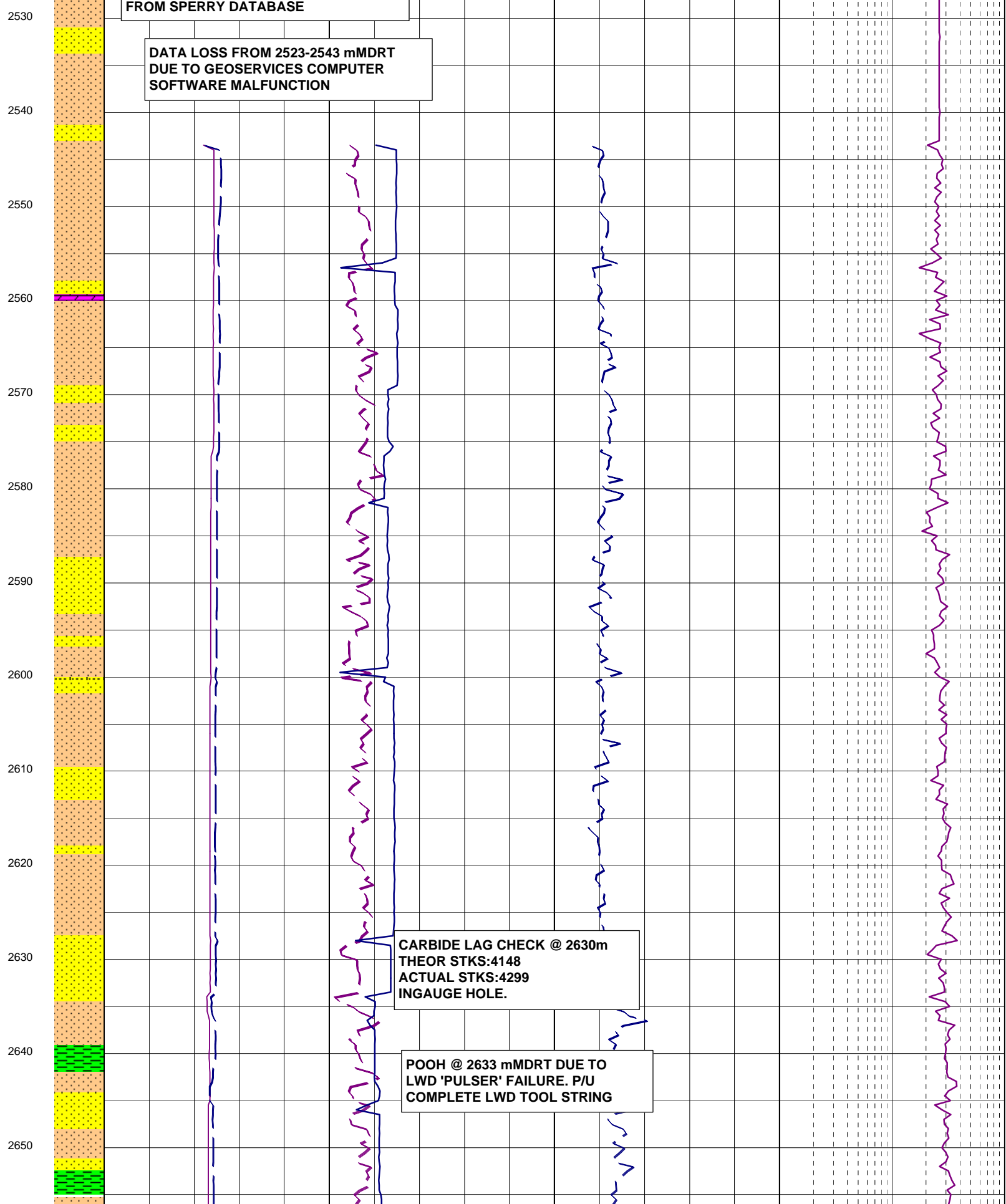
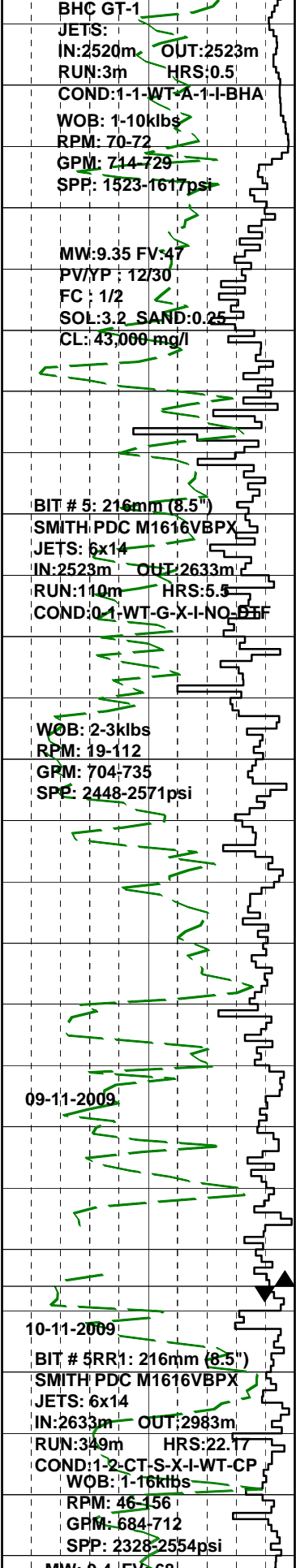
LITHOLOGY LEGEND

	Dolomite		Claystone		Argil Siltstone		Calcareous
	Calclrudite		Siltstone		Sandy Siltstone		Dolomitic
	Calcarenite		Sandstone		Calcareous Siltstone		Fossils
	Calcsiltite		Coal		Argil Sandstone		Foraminiferae
	Calclutite		Intrusive Volcanics		Calcareous Sandstone		Carbonaceous
	Sandy Claystone		Volcaniclastics		Dolomitic Sandstone		Chert
	Silty Claystone		Tuff		Silty Sandstone		Pyrite
	Calcareous Claystone		Cement				Glauconite
	Argil Calclutite						Mica

ENGINEERING

	Test
	FIT or LOT
	Mud loss
	Mud gain
	Deviation survey
	Core
	Shoe
	Calcmetry





MW: 9.4 FV: 66
PV/YP: 11/26
FC: 1/2
SOL: 3.3% SAND: 0.25%
CL: 41,500 mg/l

MW: 9.4 FV: 46
PV/YP: 10/28
FC: 1/2
SOL: 3.5% SAND: 0.25%
CL: 40,000 mg/l

WOB: 5-15klbs
RPM: 115-120
GPM: 699-704
SPP: 2400-2554psi

11-11-2009

2660

2670

2680

2690

2700

2710

2720

2730

2740

2750

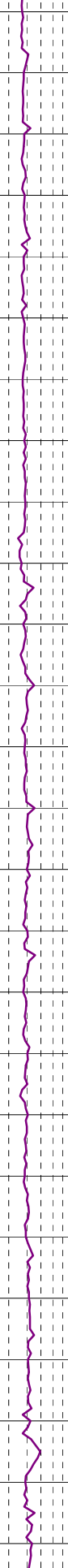
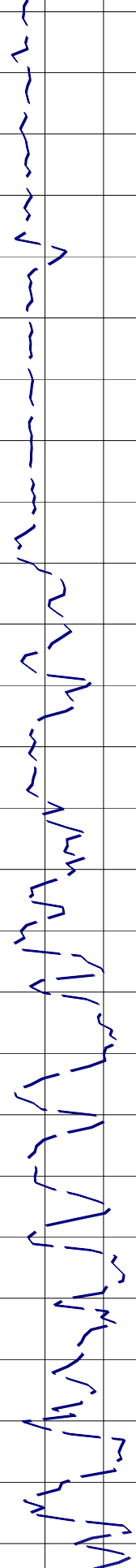
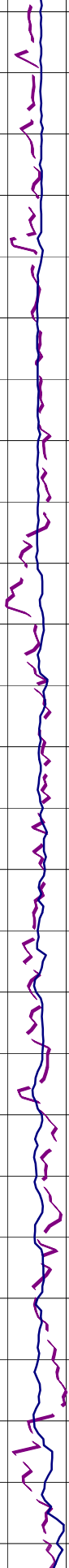
2760

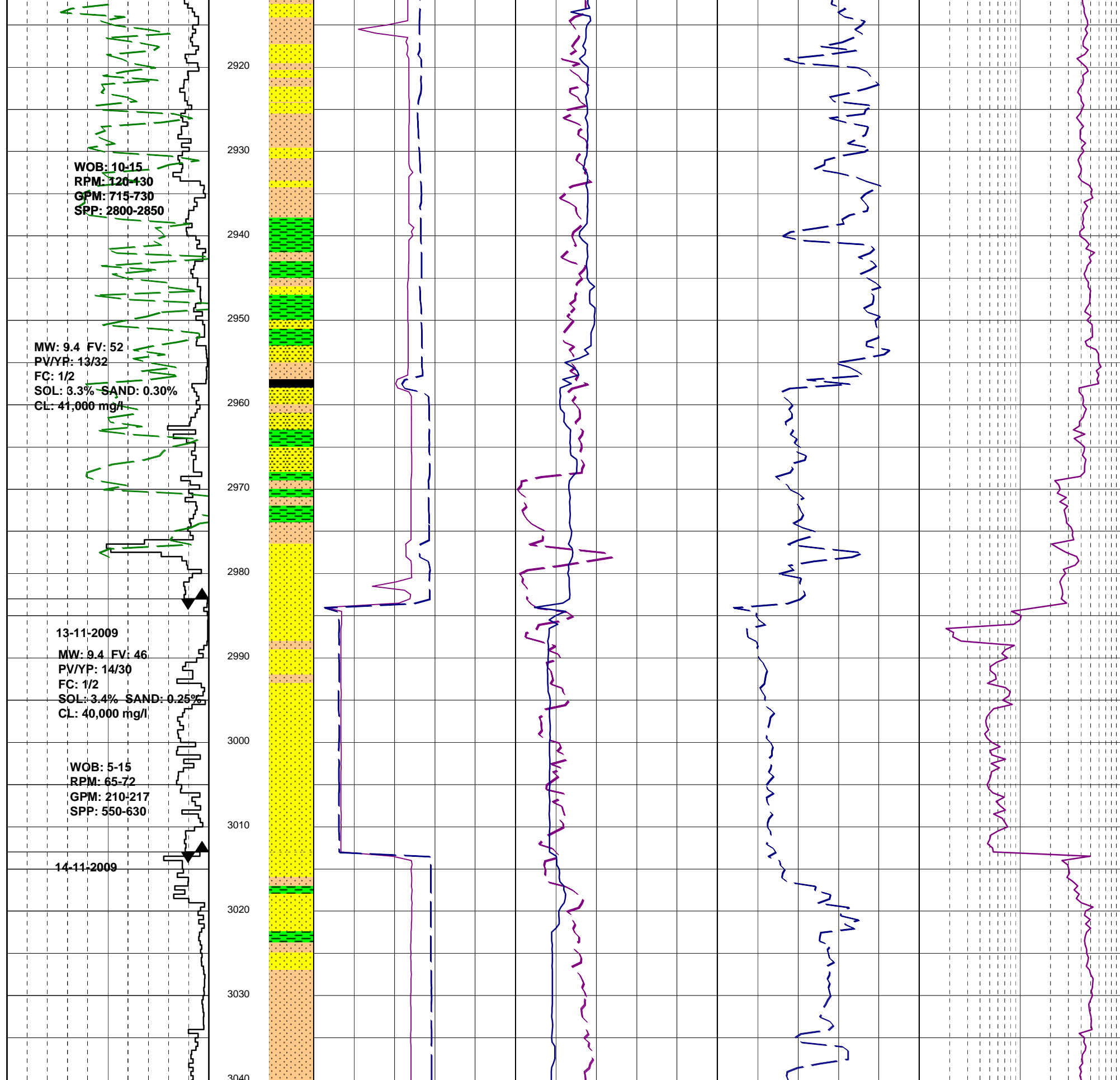
2770

2780

MW: 9.4 EV: 46
PV/YP: 10/25
FC: 1/2
SOL: 3.3% SAND: 0.25%
CL: 41,000 mg/l

2790
2800
2810
2820
2830
2840
2850
2860
2870
2880
2890
2900
2910





WOB:12-19klbs
RPM:76-87
GPM:714-730
SPP:2700-2900psi

FAULTY RIG SPP
3013-3092m

3050
3060
3070
3080
3090
3100
3110
3120
3130
3140
3150

