



# PRESSURE EVALUATION LOG



WELL : TREFOIL-2

FROM (m): 2510

TO (m): 2990

SCALE: 1/ 500

Country : AUSTRALIA  
 Region : TASMANIA  
 Field : TREFOIL  
 Permit : T/18P  
 Well Type : APPRAISAL  
 Rig Name : KAN TAN 4

**POSITION**  
 Latitude : 39 53' 07.93" S  
 Longitude : 145 22' 14.62" E  
 X (m) : 360690.389  
 Y (m) : 5583676.588  
 RT-Sealevel (m MSL) : 26  
 RT-Seabed (m) : 95

**CASING SHOE SIZE / DEPTH**  
 762mm (30") at (m MDRT) : 153.00  
 340mm (13 3/8") at (m MDRT) : 930.00  
 245mm (9 5/8") at (m MDRT) : 2520.00

Spud Date : 06-10-2009  
 Total Depth Date :  
 Total Depth (m MDRT) :  
 Total Depth (m TVSS) :  
 Status :

## ABBREVIATIONS

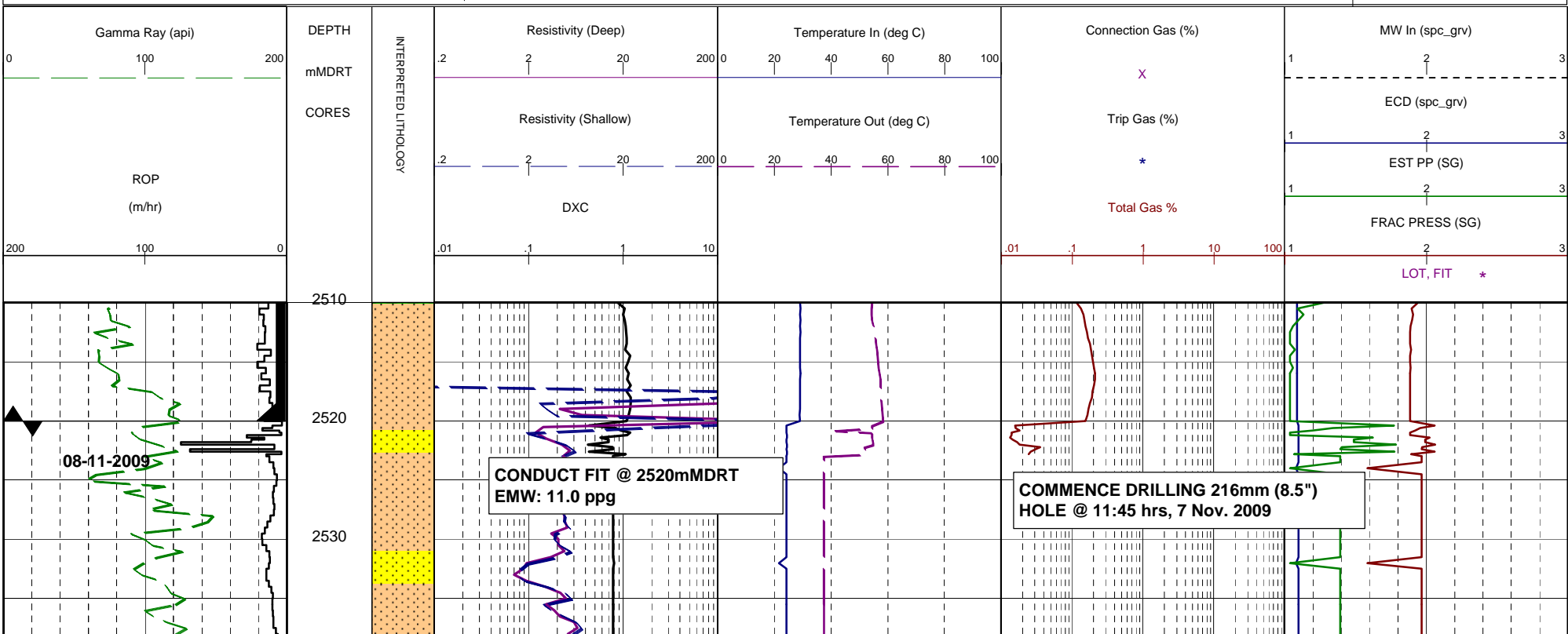
MW MUD WEIGHT	NB NEW BIT
FV FUNNEL VISCOSITY	RR RERUN BIT
PV PLASTIC VISCOSITY	CB CORE BIT
YP YIELD POINT	WOB WEIGHT ON BIT
FC FILTER CAKE	RPM REVS PER MINUTE
SOL SOLIDS	FLC FLOW CHECK
CR CIRCULATE RETURNS	WL FILTRATE
SD SAND - %	PR POOR RETURNS
S SALINITY - PPM	NR NO RETURNS
RM MUD RESISTIVITY	BG BACKGROUND GAS
RMF MUD FILTRATE	TG TRIP GAS
C CARBIDE TEST	STG SHORT TRIP GAS
LAT LOGGED AFTER TRIP	CG CONNECTION GAS
DS DEVIATION SURVEY	SG SWAB GAS
	SVG SURVEY GAS

## LITHOLOGY LEGEND

Dolomite	Claystone	Argil Siltstone	Calcareous
Calcirudite	Siltstone	Sandy Siltstone	Dolomitic
Calcarenite	Sandstone	Calcareous Siltstone	Fossils
Calcisiltite	Coal	Argil Sandstone	Foraminiferae
Calcilutite	Intrusive Volcanics	Calcareous Sandstone	Carbonaceous
Sandy Claystone	Volcaniclastics	Dolomitic Sandstone	Chert
Silty Claystone	Tuff	Silty Sandstone	Pyrite
Calcareous Claystone	Cement		Glauconite
Argil Calcilutite			Mica

## ENGINEERING

TEST	Test
FIT or LOT	FIT or LOT
Mud loss	Mud loss
Mud gain	Mud gain
Deviation survey	Deviation survey
Core	Core
Shoe	Shoe
Calcimetry	Calcimetry









WOB: 10-15  
RPM: 120-130  
GPM: 715-730  
SPP: 2800-2850

2930  
2940  
2950  
2960  
2970  
2980  
2990

