



RESERVAL GAS RATIO LOG

WELL : TREFOIL-2

FROM (m): 2510

TO (m): 2990

SCALE: 1/ 500

Country : AUSTRALIA	Latitude : 39 53' 07.93" S	762mm (30") at (m MDRT) : 153.00	Spud Date : 06-10-2009
Region : TASMANIA	Longitude : 145 22' 14.62" E	340mm (13 3/8") at (m MDRT) : 930.00	Total Depth Date :
Field : TREFOIL	X (m) : 360690.389	245mm (9 5/8") at (m MDRT) : 2520.00	Total Depth (m MDRT) :
Permit : T/18P	Y (m) : 5583676.588		Total Depth (m TVSS) :
Well Type : APPRAISAL	RT-Sealevel (m MSL) : 26		Status :
Rig Name : KAN TAN 4	RT-Seabed (m) : 95		

GAS RATIOS FORMULAE

GAS WETNESS RATIO (Wh)

$$GWR = (C2 + C3 + C4 + C5) / (C1 + C2 + C3 + C4 + C5) * 100$$

LIGHT TO HEAVY RATIO (Bh)

$$LHR = (C1 + C2) / (C3 + C4 + C5)$$

OIL CHARACTER QUALIFIER (Ch)

$$OCQ = (C4 + C5) / (C3)$$

Dolomite	Claystone	Argil Siltstone	Calcareous
Calcirudite	Siltstone	Sandy Siltstone	Dolomitic
Calcarenite	Sandstone	Calcareous Siltstone	Fossils
Calcisiltite	Coal	Argil Sandstone	Foraminiferae
Calcilutite	Intrusive Volcanics	Calcareous Sandstone	Carbonaceous
Sandy Claystone	Volcaniclastics	Dolomitic Sandstone	Chert
Silty Claystone	Tuff	Silty Sandstone	Pyrite
Calcareous Claystone	Cement		Glauconite
Argil Calcilutite			Mica

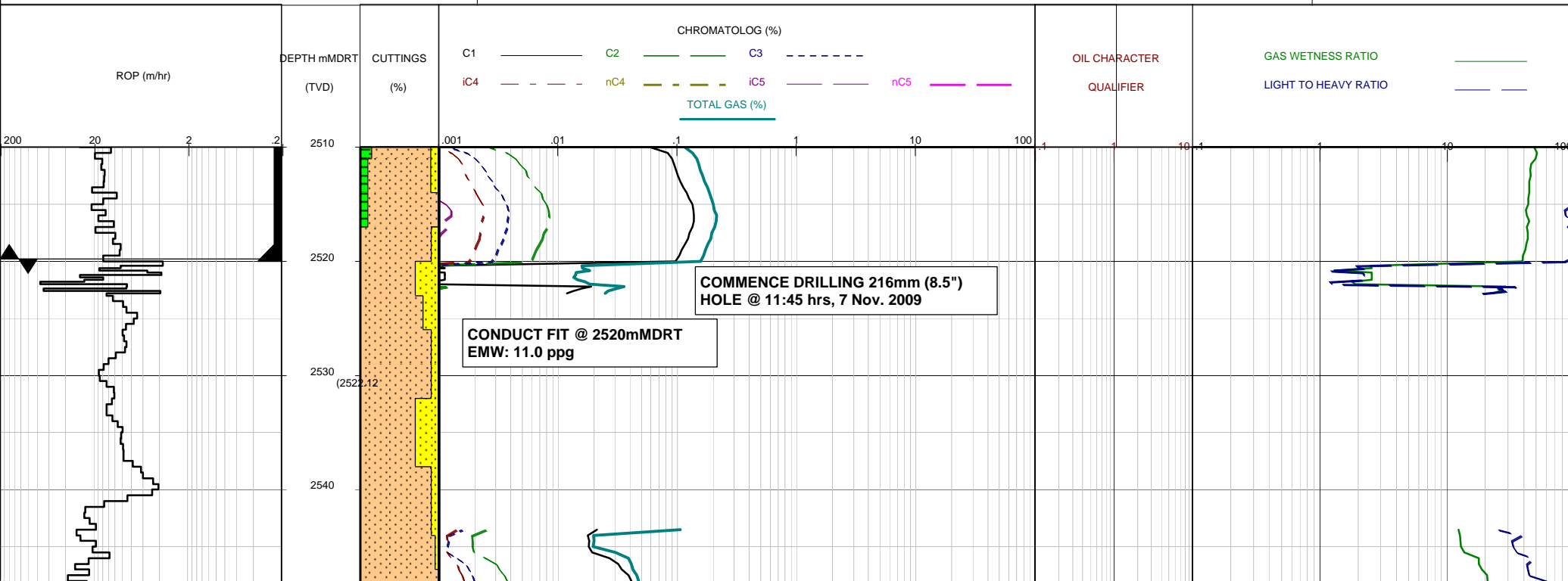
GEOSERVICES CREW

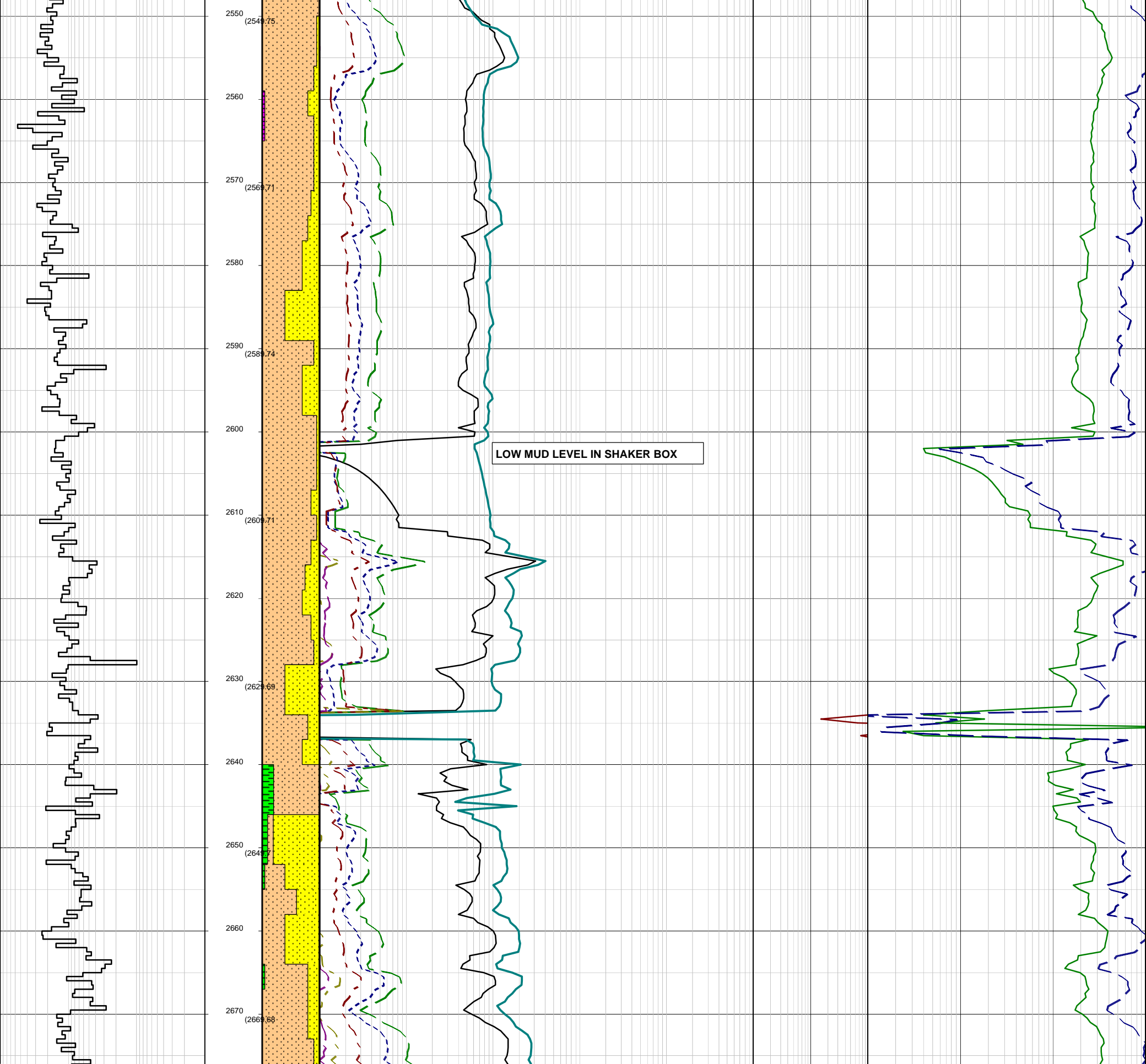
ALS ENGINEERS

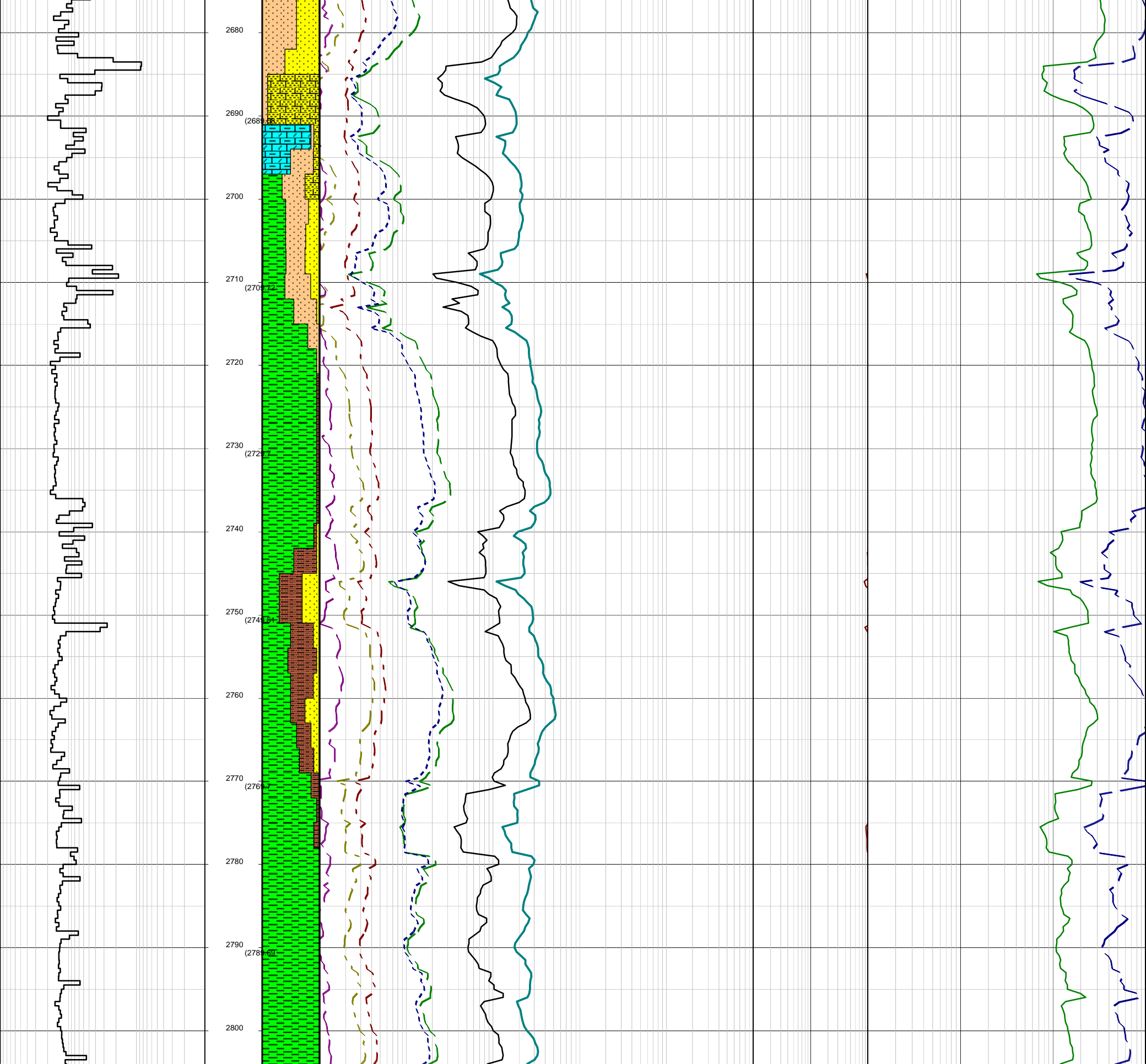
N. Elliott

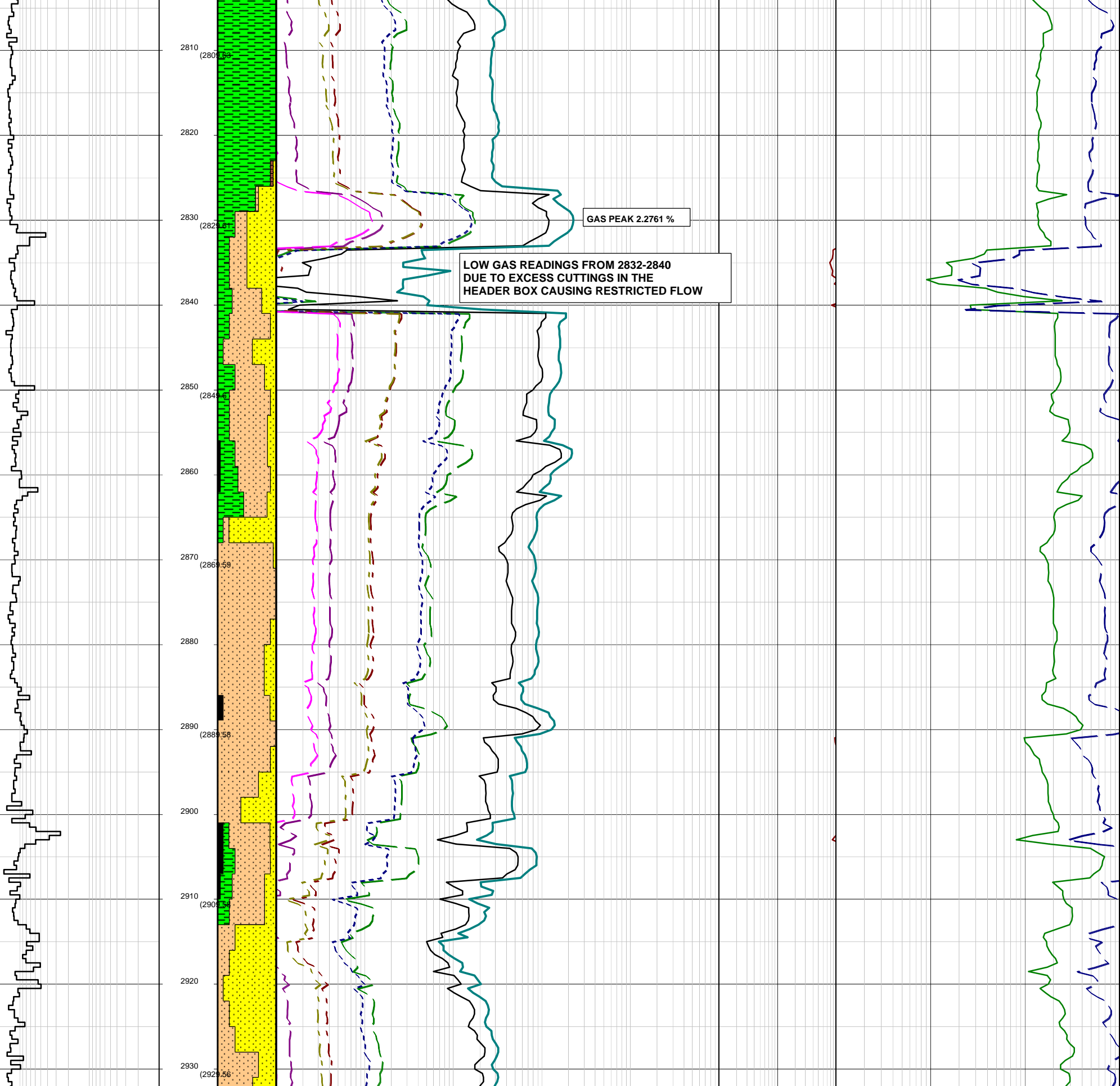
G. Gopi

MUDLOGGERS









2810

(2807.56)

2820

2830

(2827.56)

2840

2850

(2847.56)

2860

2870

(2867.59)

2880

2890

(2887.58)

2900

2910

(2907.58)

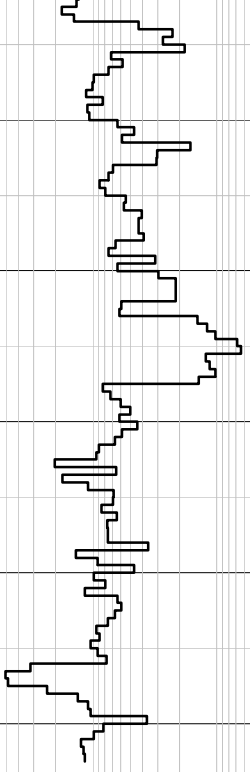
2920

2930

(2927.56)

GAS PEAK 2.2761 %

LOW GAS READINGS FROM 2832-2840
DUE TO EXCESS CUTTINGS IN THE
HEADER BOX CAUSING RESTRICTED FLOW



2940
2950
(2948.58)
2960
2970
(2968.47)
2980
2990

