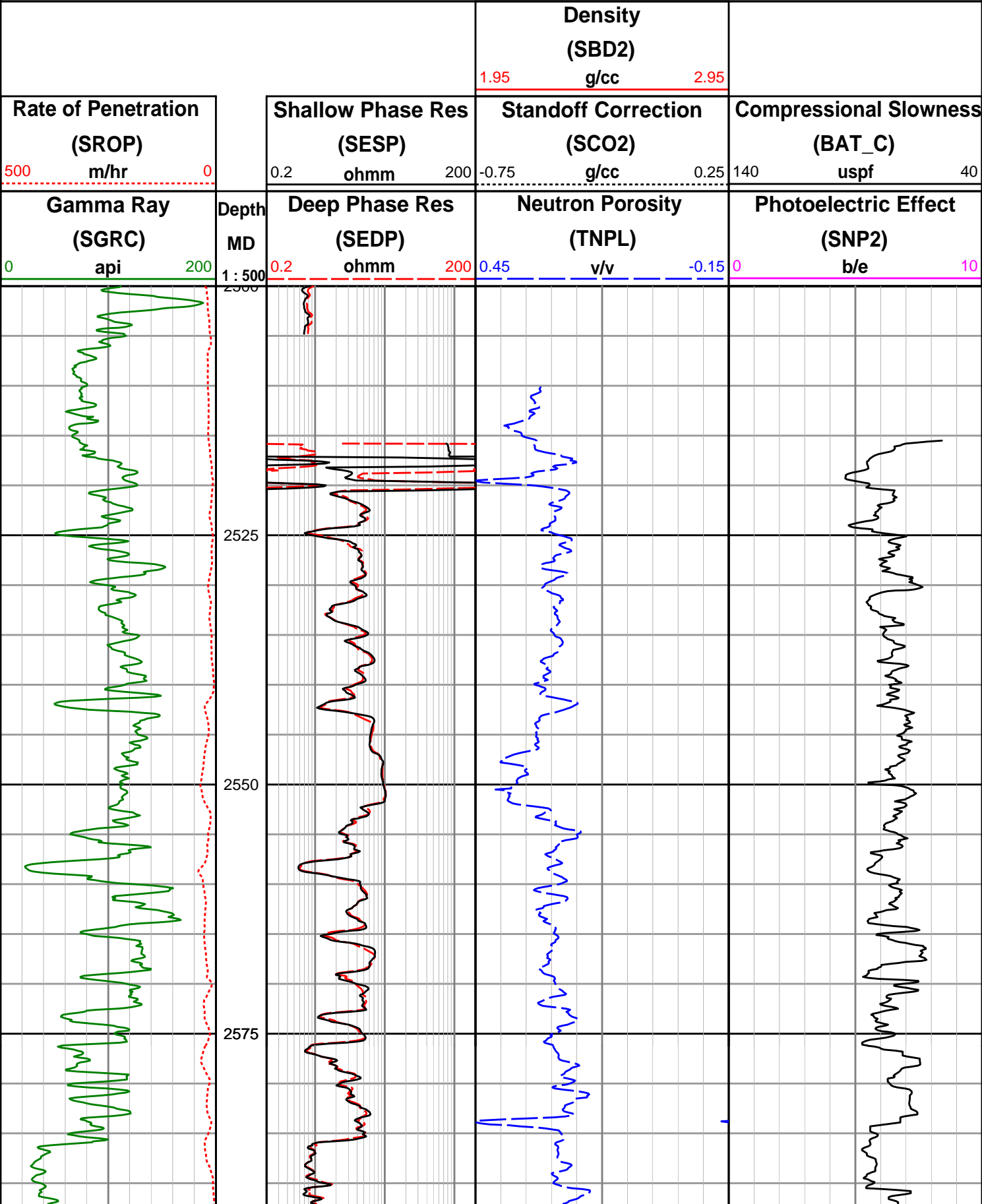
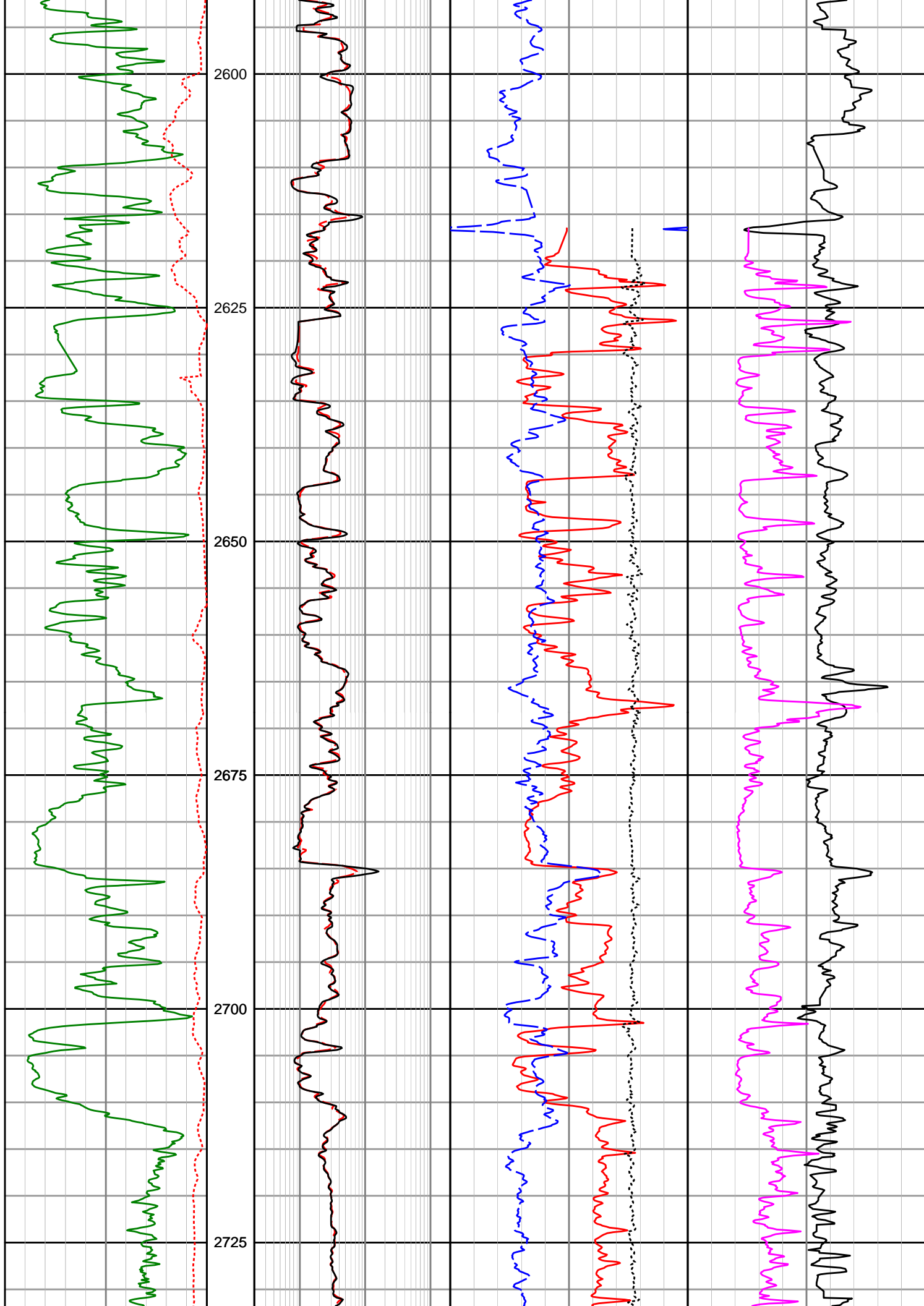


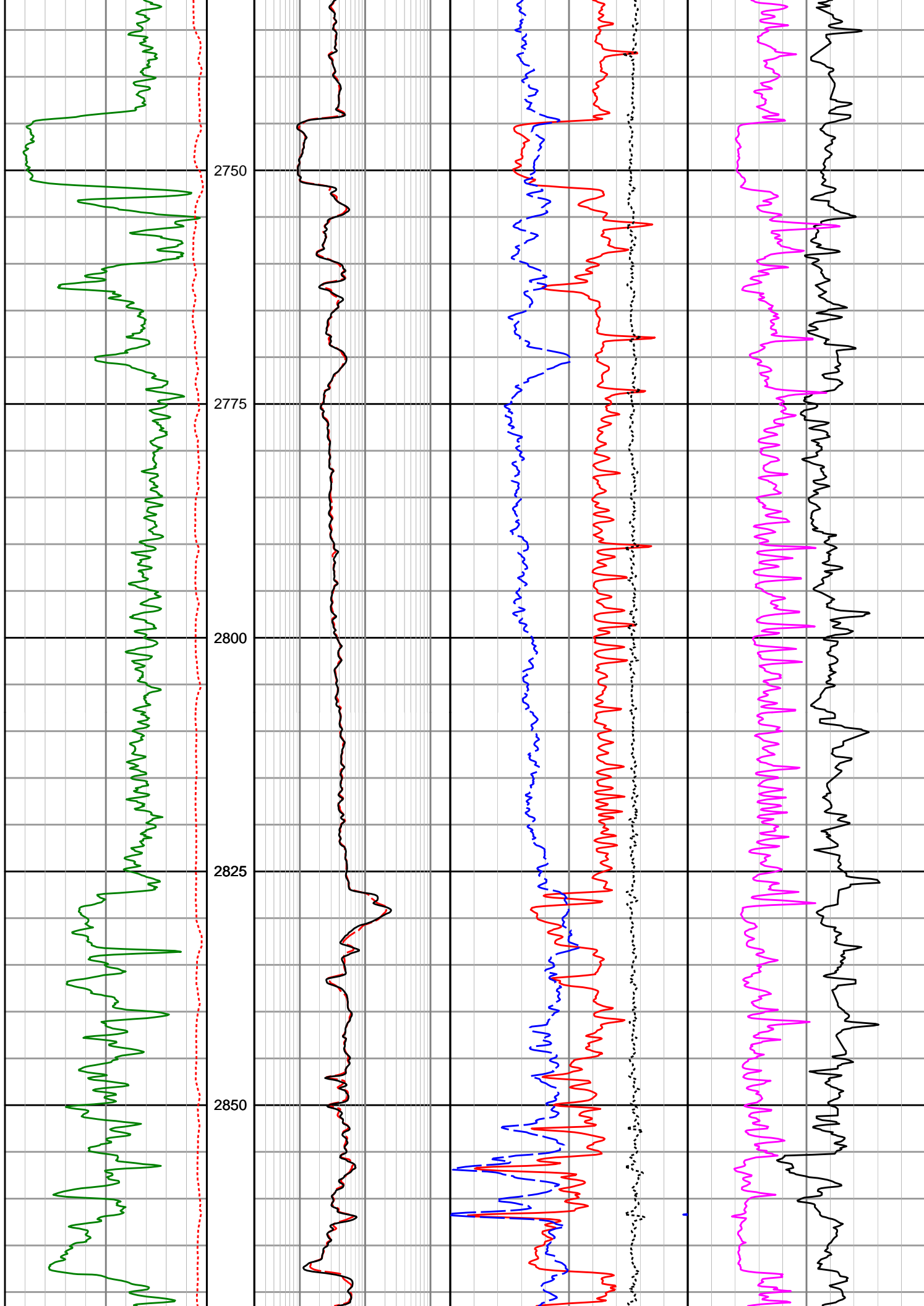
Origin Energy Resources Ltd

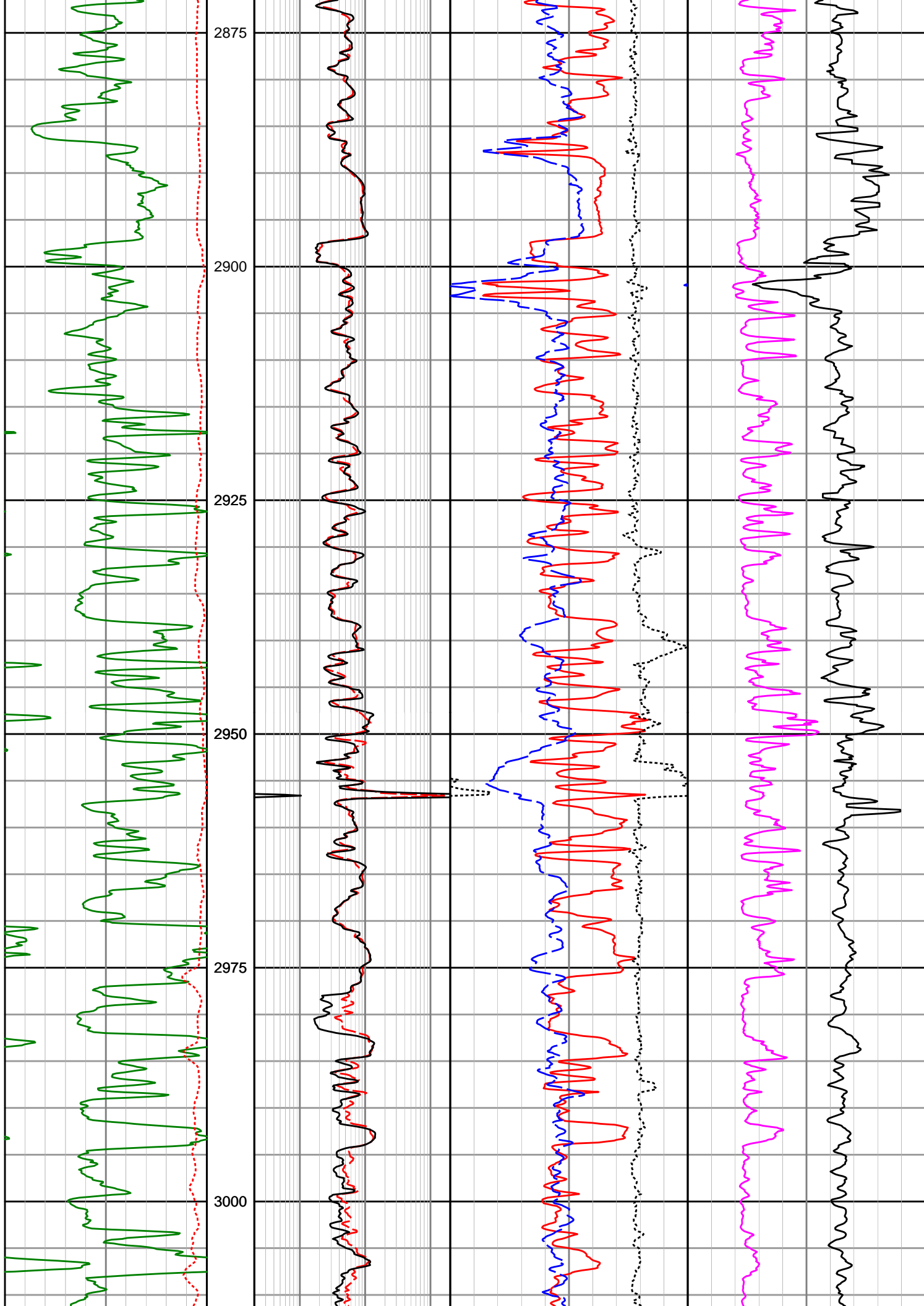
Trefoil-2

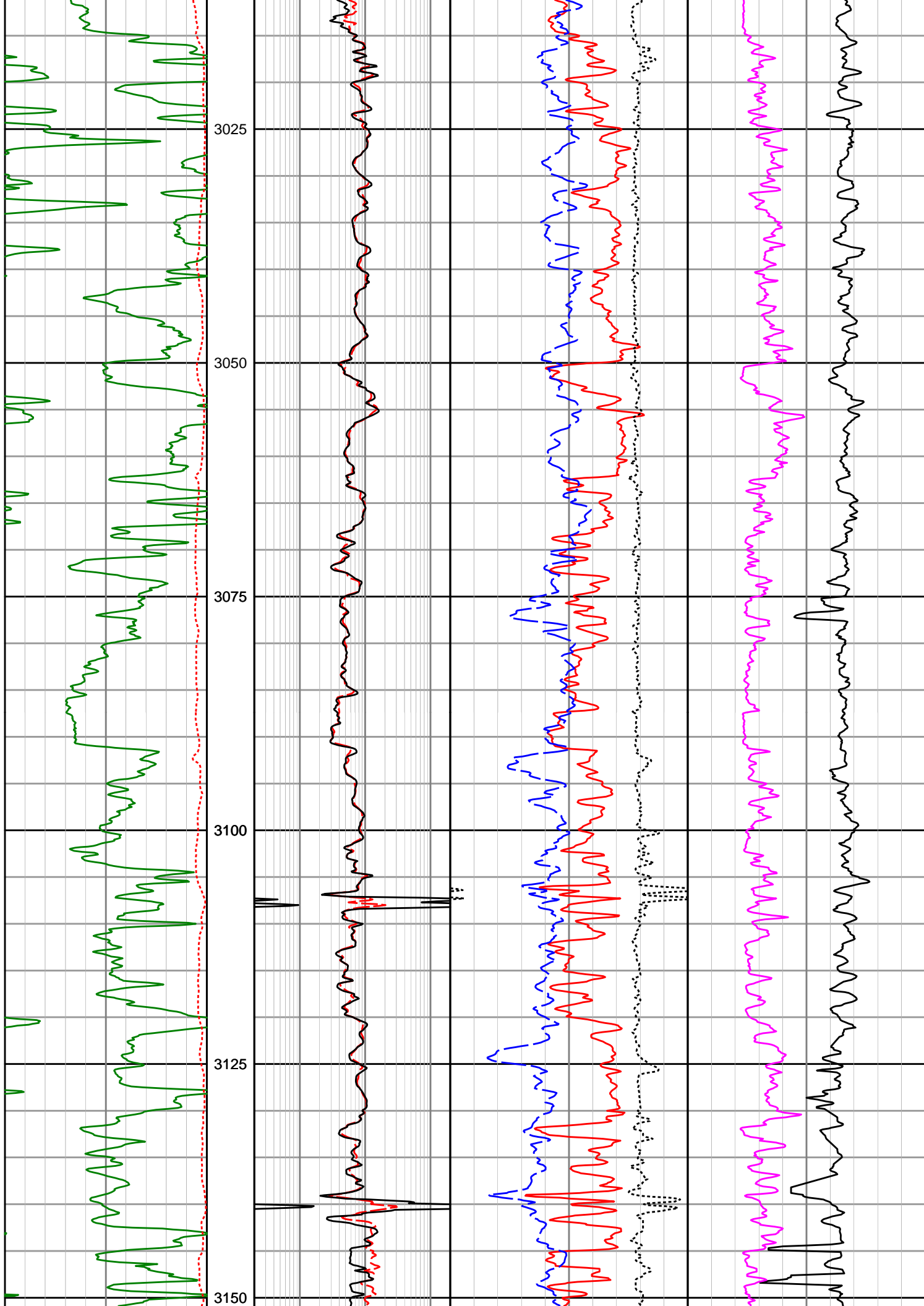
Realtime LWD Data

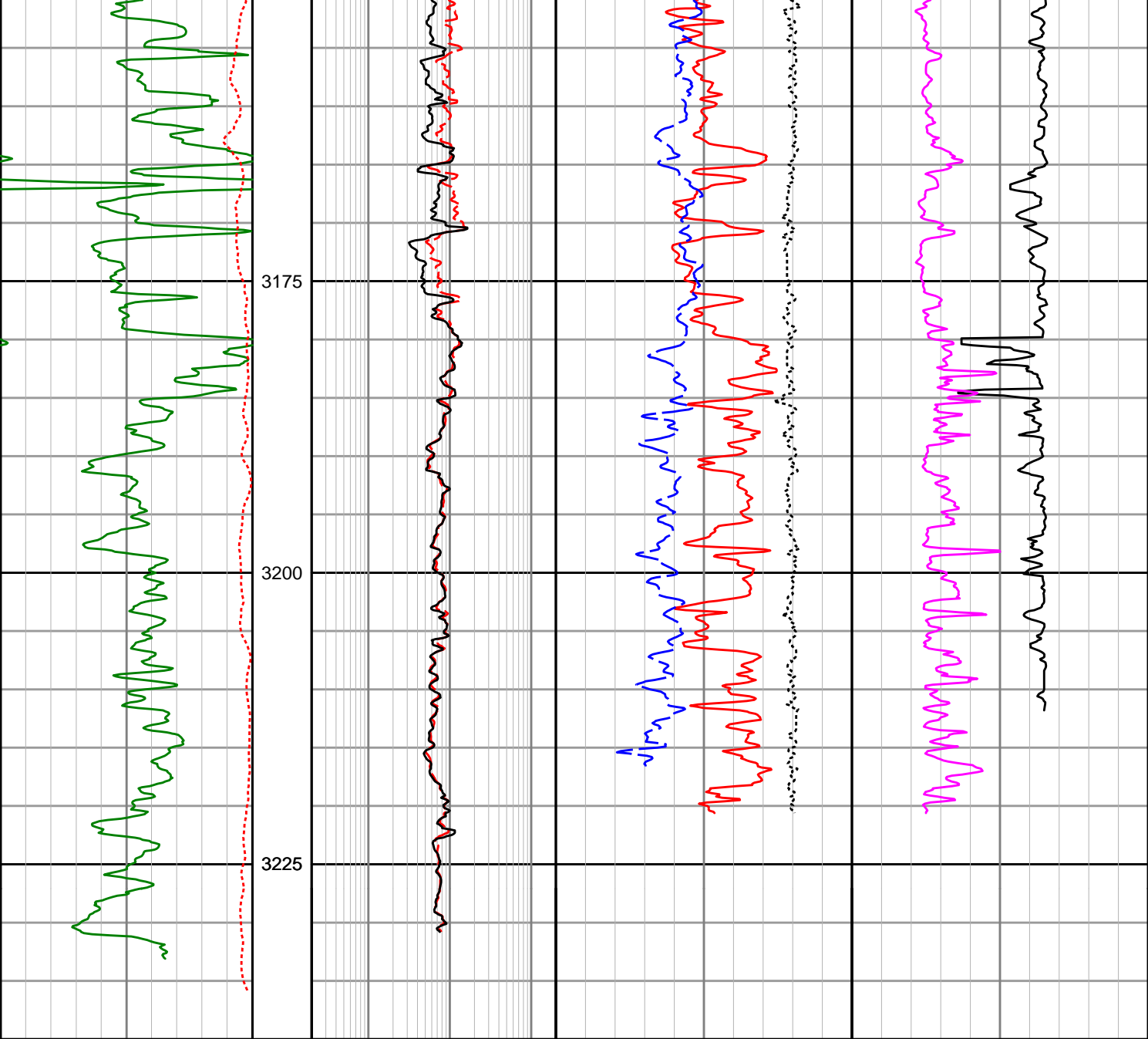












<div>Gamma Ray</div> <div>(SGRC)</div> <div>api</div> <div>0200</div>	<div>Depth</div> <div>MD</div> <div>1 : 500</div>	<div>Deep Phase Res</div> <div>(SEDP)</div> <div>ohmm</div> <div>0.2200</div>	<div>Neutron Porosity</div> <div>(TNPL)</div> <div>v/v</div> <div>0.45-0.15</div>	<div>Photoelectric Effect</div> <div>(SNP2)</div> <div>b/e</div> <div>010</div>
<div>Rate of Penetration</div> <div>(SROP)</div> <div>m/hr</div> <div>5000</div>		<div>Shallow Phase Res</div> <div>(SESP)</div> <div>ohmm</div> <div>0.2200</div>	<div>Standoff Correction</div> <div>(SCO2)</div> <div>g/cc</div> <div>-0.750.25</div>	<div>Compressional Slowness</div> <div>(BAT_C)</div> <div>uspf</div> <div>14040</div>
			<div>Density</div> <div>(SBD2)</div> <div>g/cc</div> <div>1.952.95</div>	