

Input DLIS Files						
DEFAULT	HRLA_TLD_MCFL_CNL_079LUP	FN:89	PRODUCER	19-Nov-2009 09:13	3229.9 M	2766.0 M
Output DLIS Files						
DEFAULT	HRLA_TLD_MCFL_CNL_083PUP	FN:97	PRODUCER	19-Nov-2009 09:36	3215.0 M	2740.9 M
RTBK	HRLA_TLD_MCFL_CNL_083PUP	FN:98	PRODUCER	19-Nov-2009 09:35	3215.0 M	2740.9 M

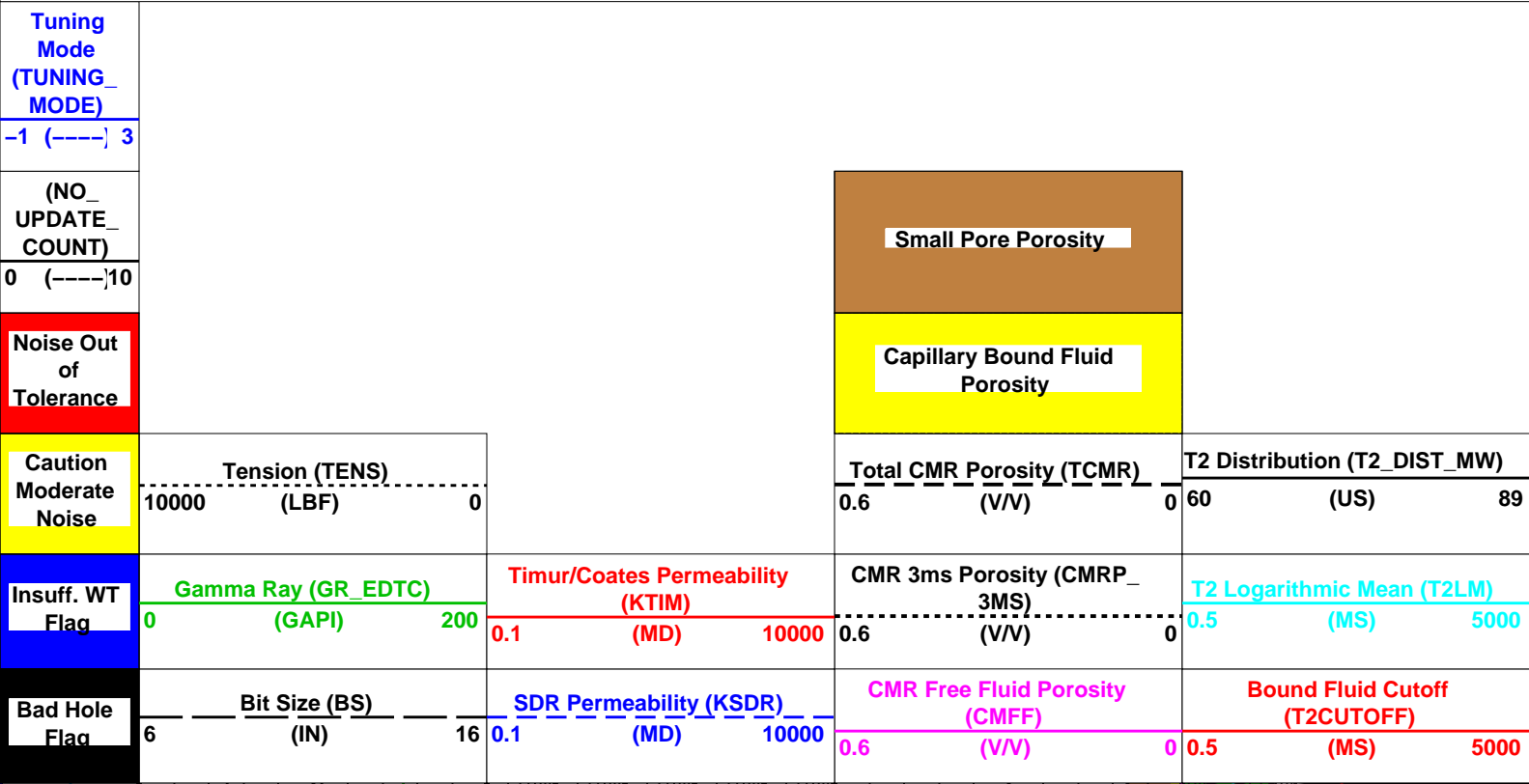
CMR DEPTH LOG REPORT

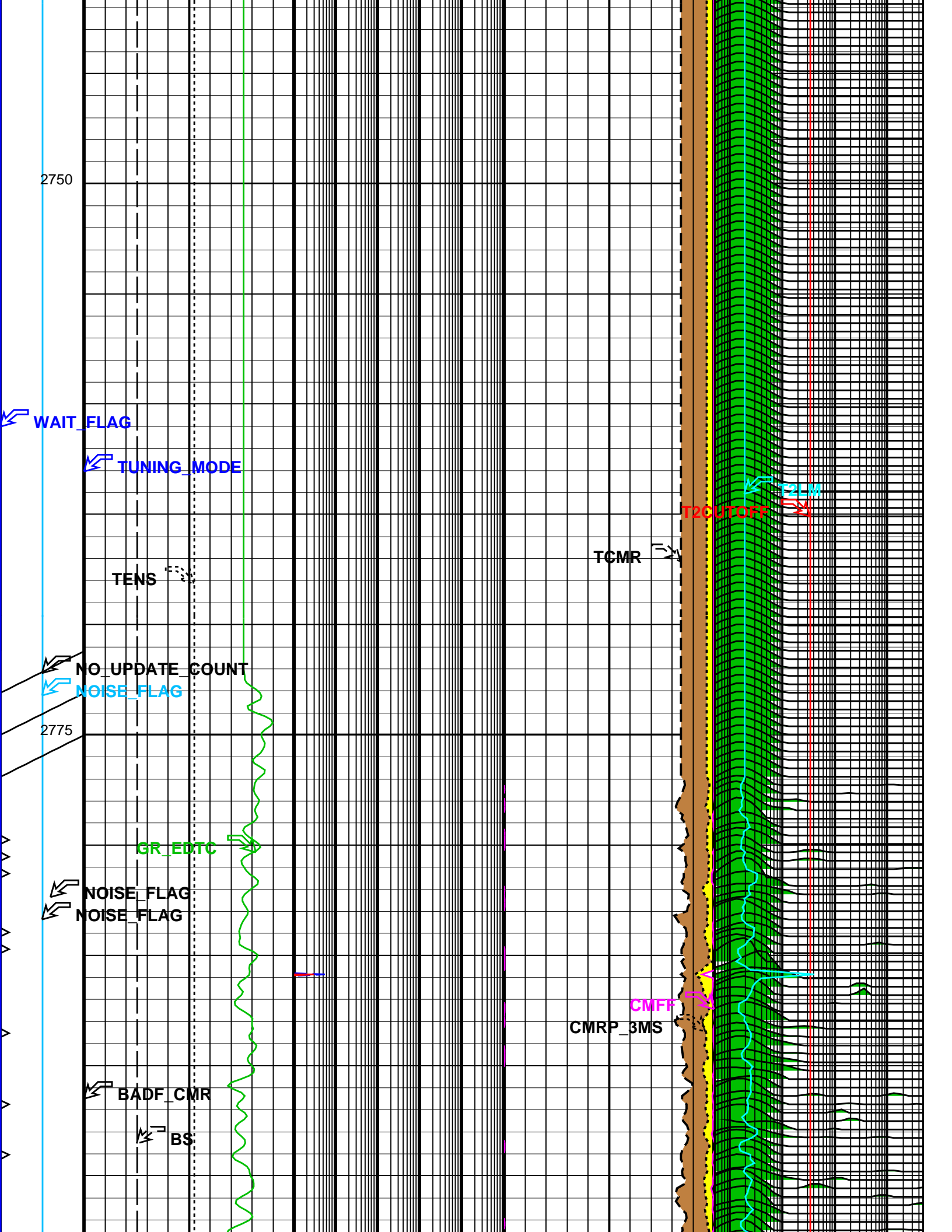
PARAMETER SUMMARY

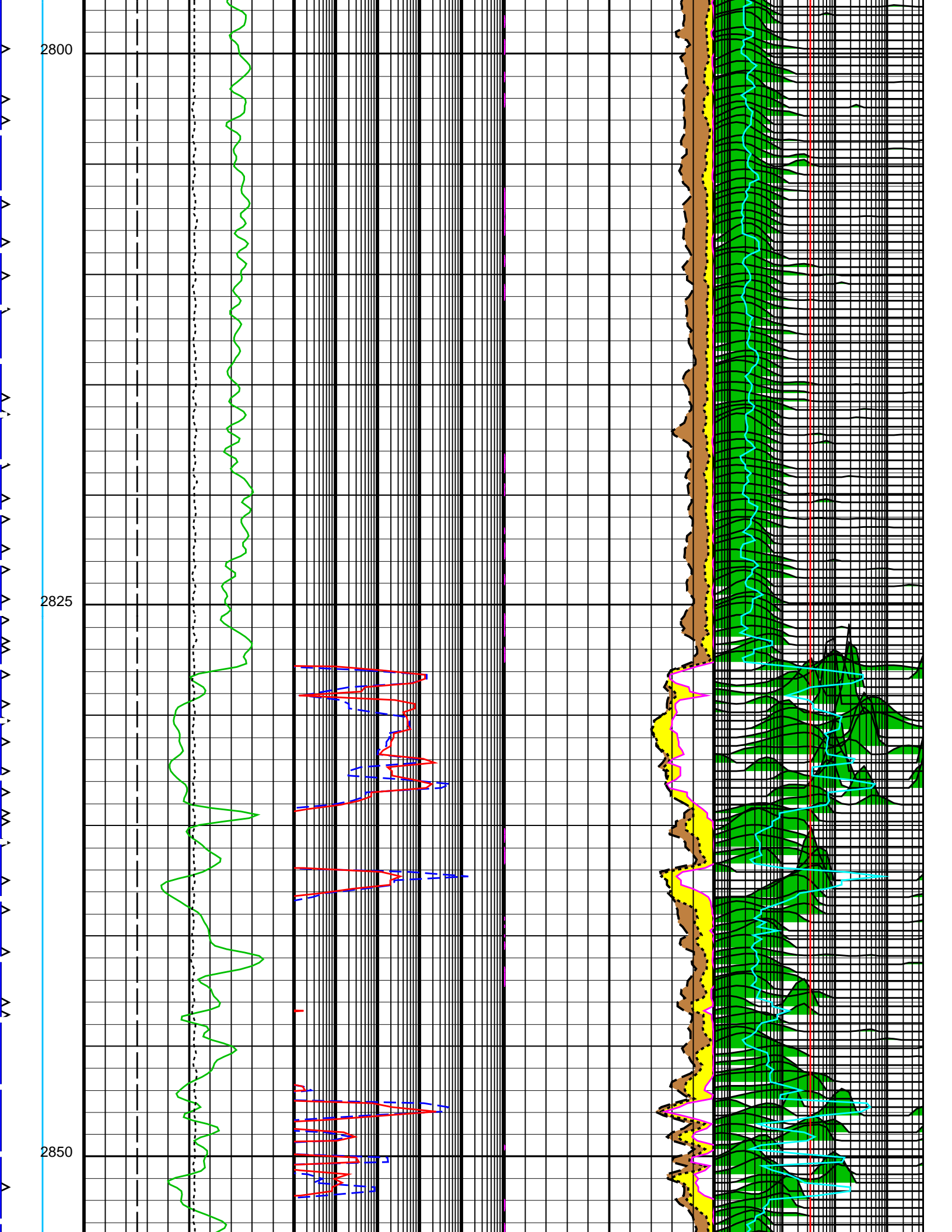
Tool Type: CMR-Plus	Cart. Number: 186	Sonde Number: 163	
Kit Number: 28	DHC Version : 16.4	DSP Version : 13	SP Version : 10182006
Mode: Expert Depth Log – B Mode		LFST Freq(khz) : 2183	LFST Temp(degC) : 113.71
Log Direction: Up	Polarization Correction: Off	EPM: Yes	EPM T1/T2: Auto
Despiking: Off	High Res: Off	KBFV: Off	DMRP: Off
Echo Spacing(us):	(200 200)		
Polarization Times(sec) for:	T1=1s: (infinity 0.02)	T1=3s: (infinity 0.02)	T1=5s: (14.86 0.02)
Number of Echoes:	(5000 30)		
Repetition:	(1 10)	Duty Cycle (highest): 0.0288	
Regularization:	Auto		
T2 Min(msec): 0.5	T2 Max(msec): 5000	T2 Cutoff(msec): 33	T1/T2: 1.5
Number of Components: 30	Downhole Stacking: 3	Uphole Stacking: 1	First Echo Used: No
Multiple T2 Cutoffs(msec):	(0.5 1 3 10 33 100 300 1000 5000)		
Sample Int.(in): 7.5	Req Log Speed (f/h): 500		

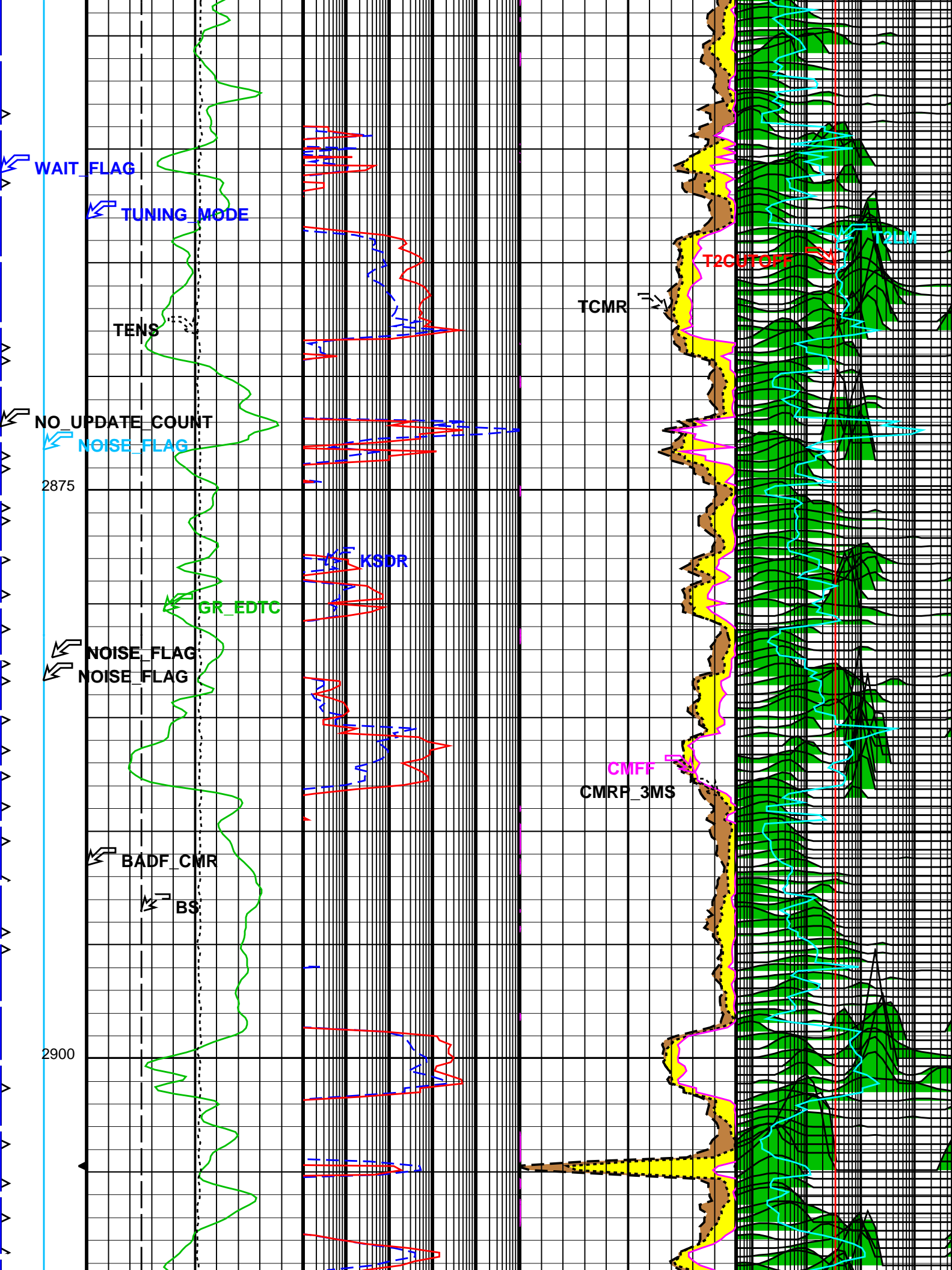
PIP SUMMARY

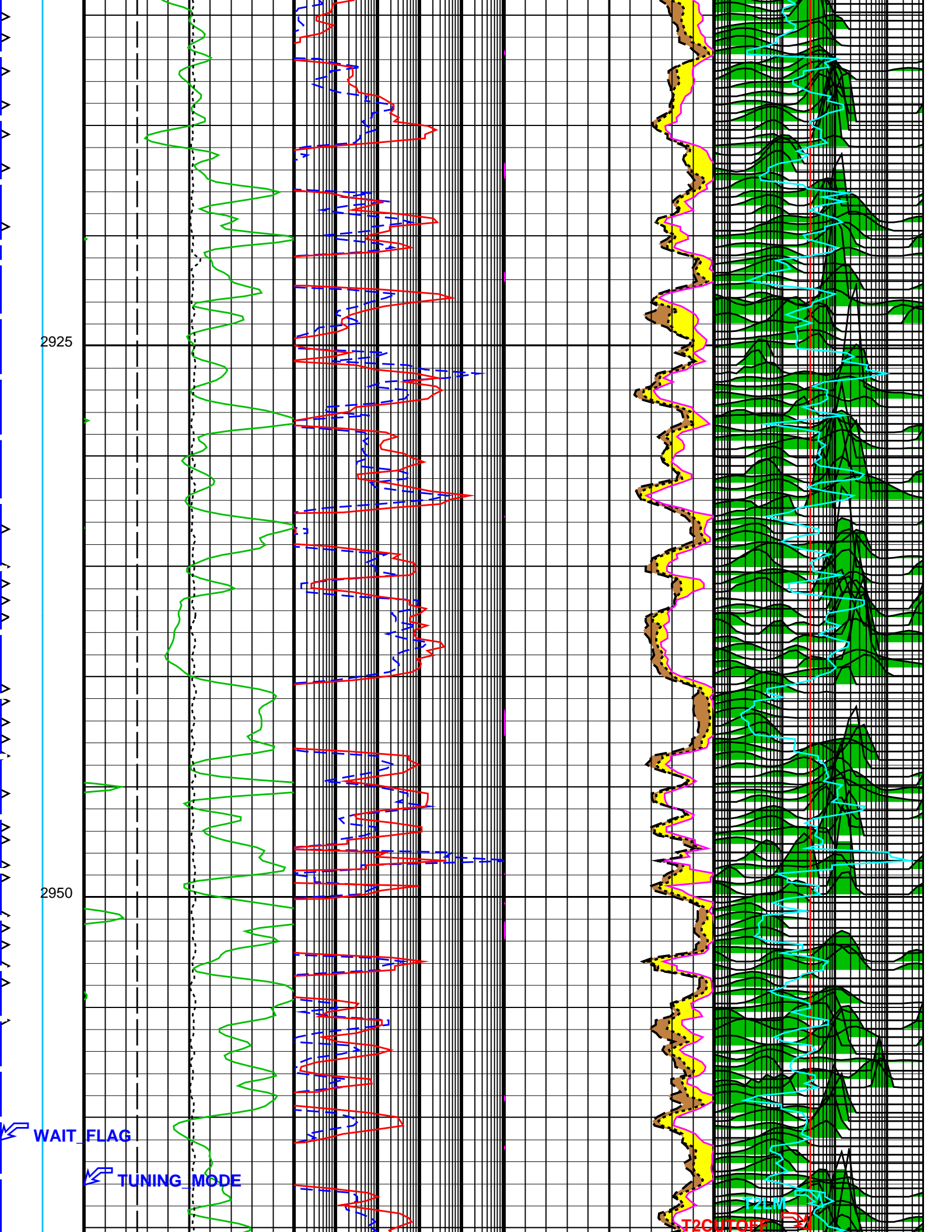
Time Mark Every 60 S

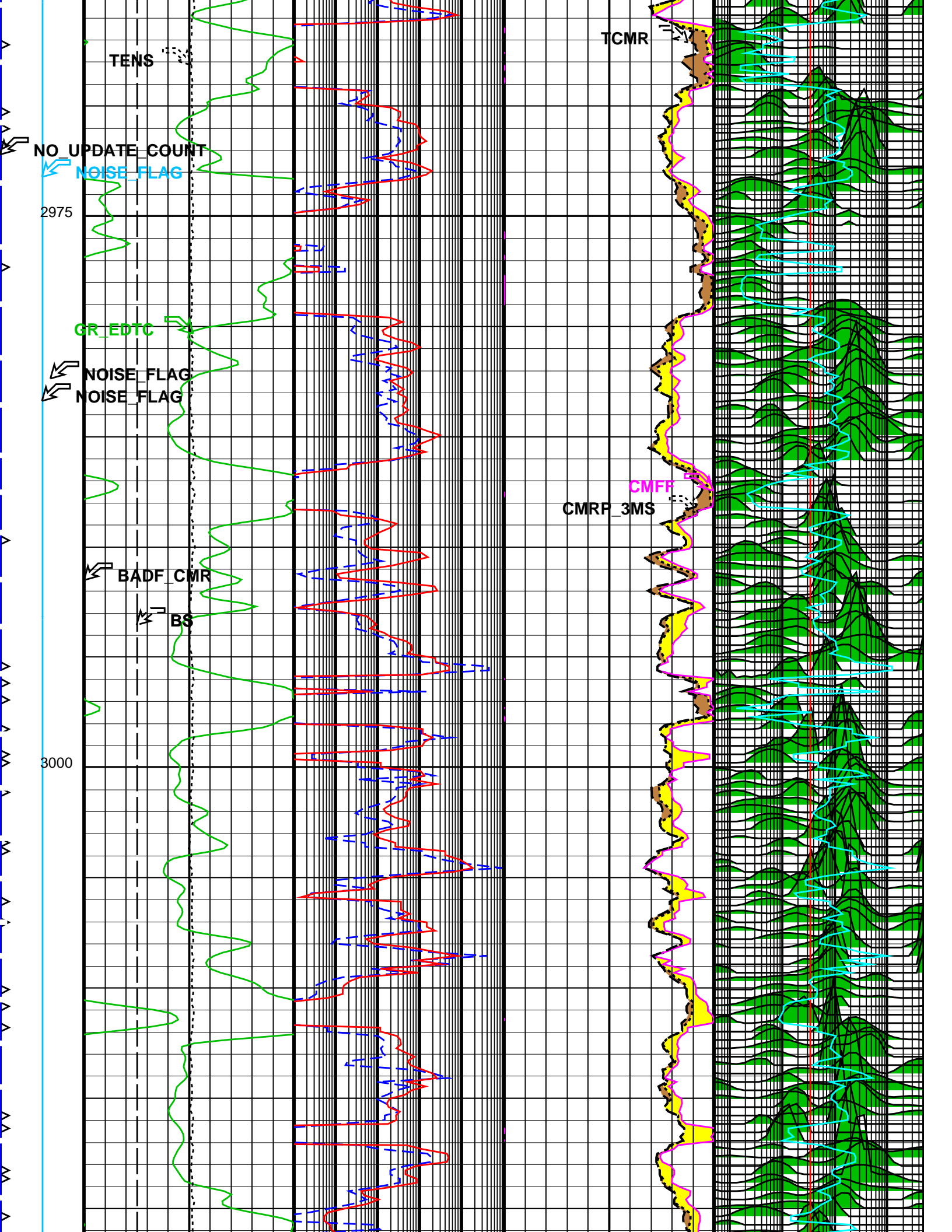


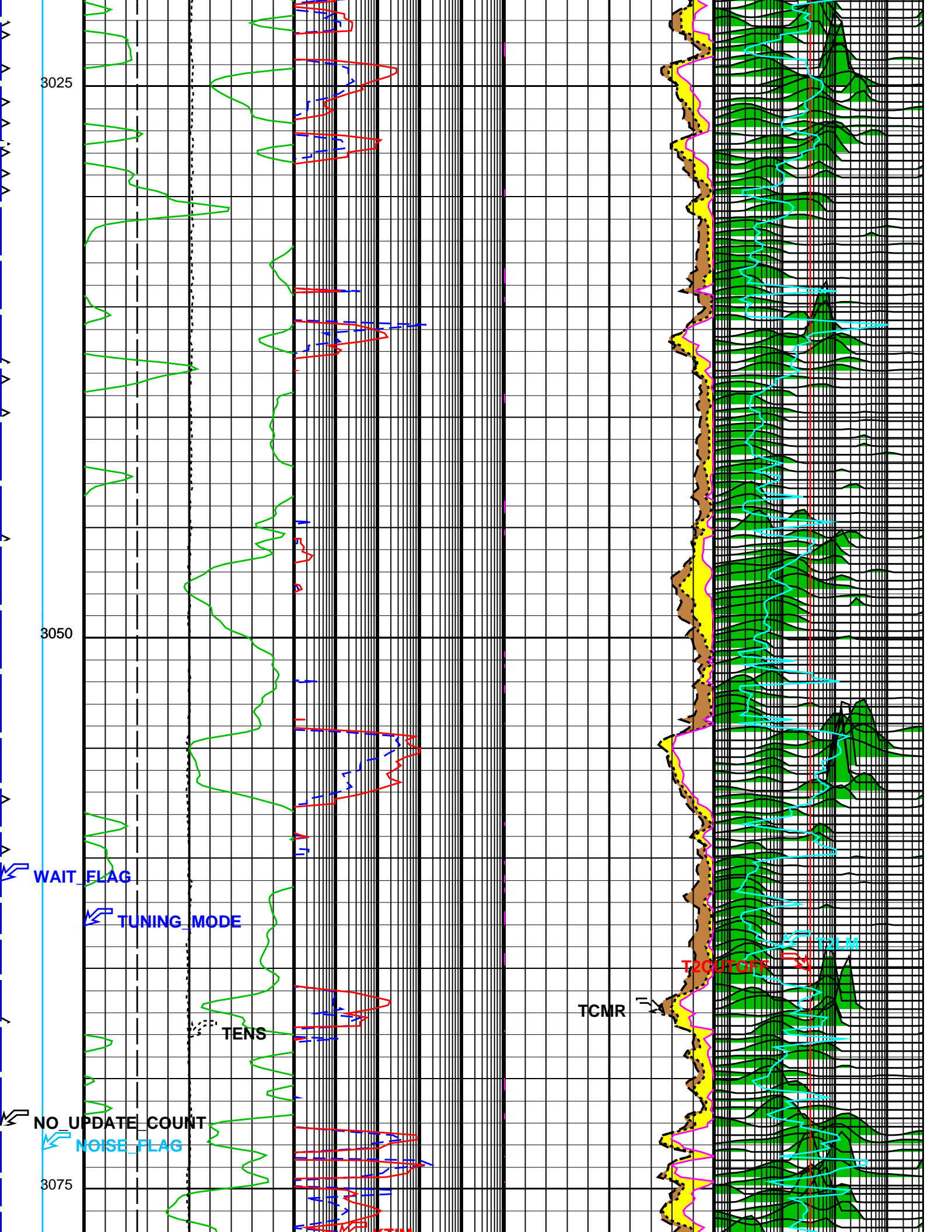


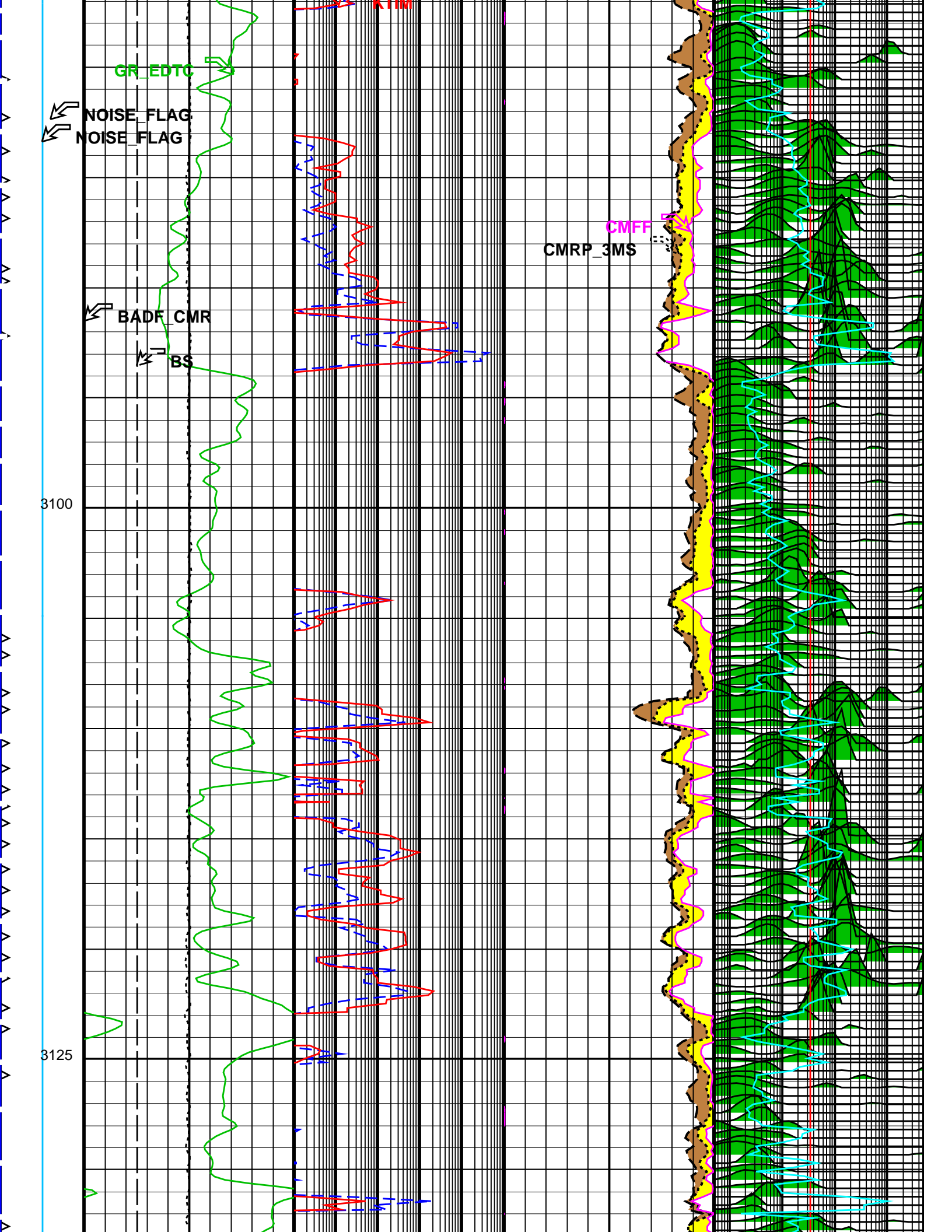


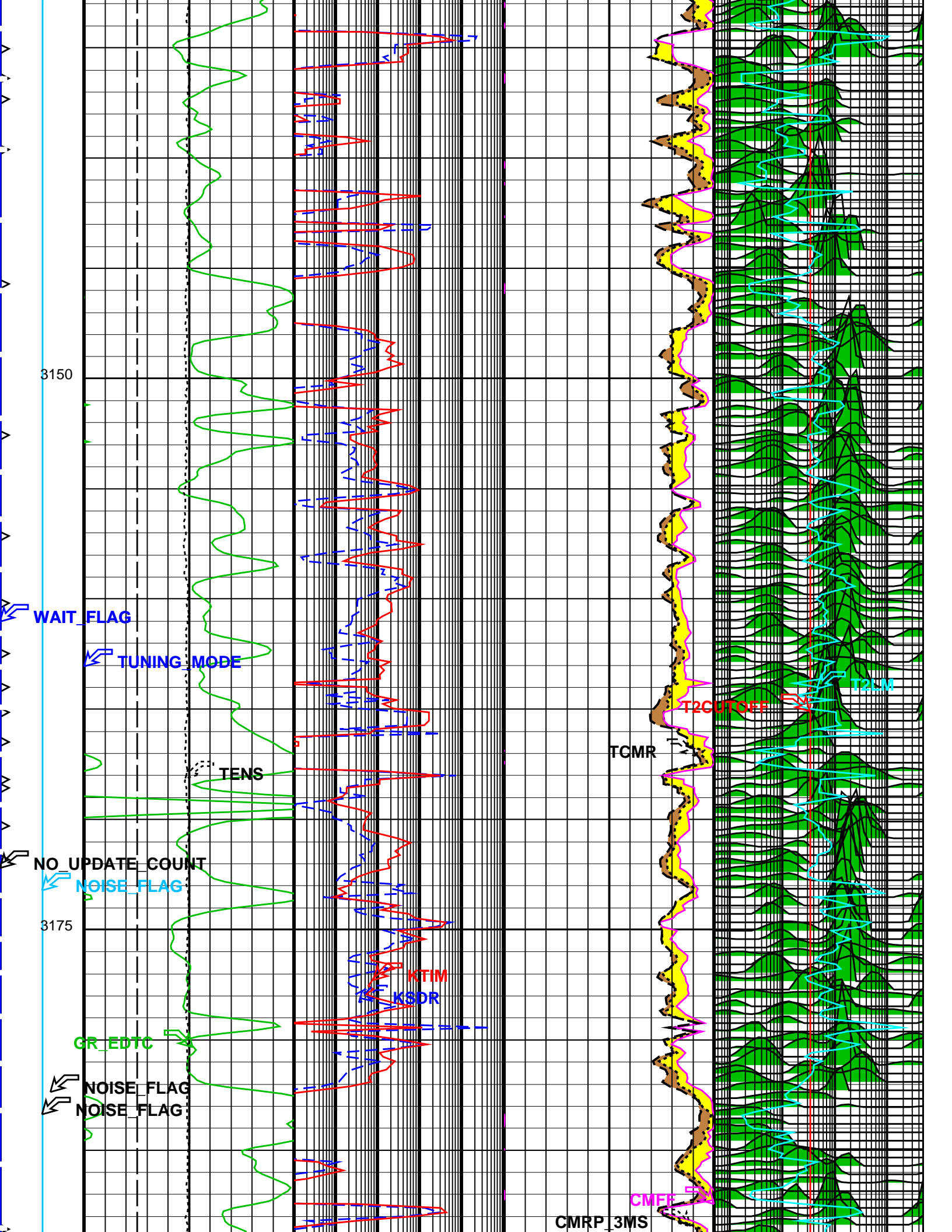


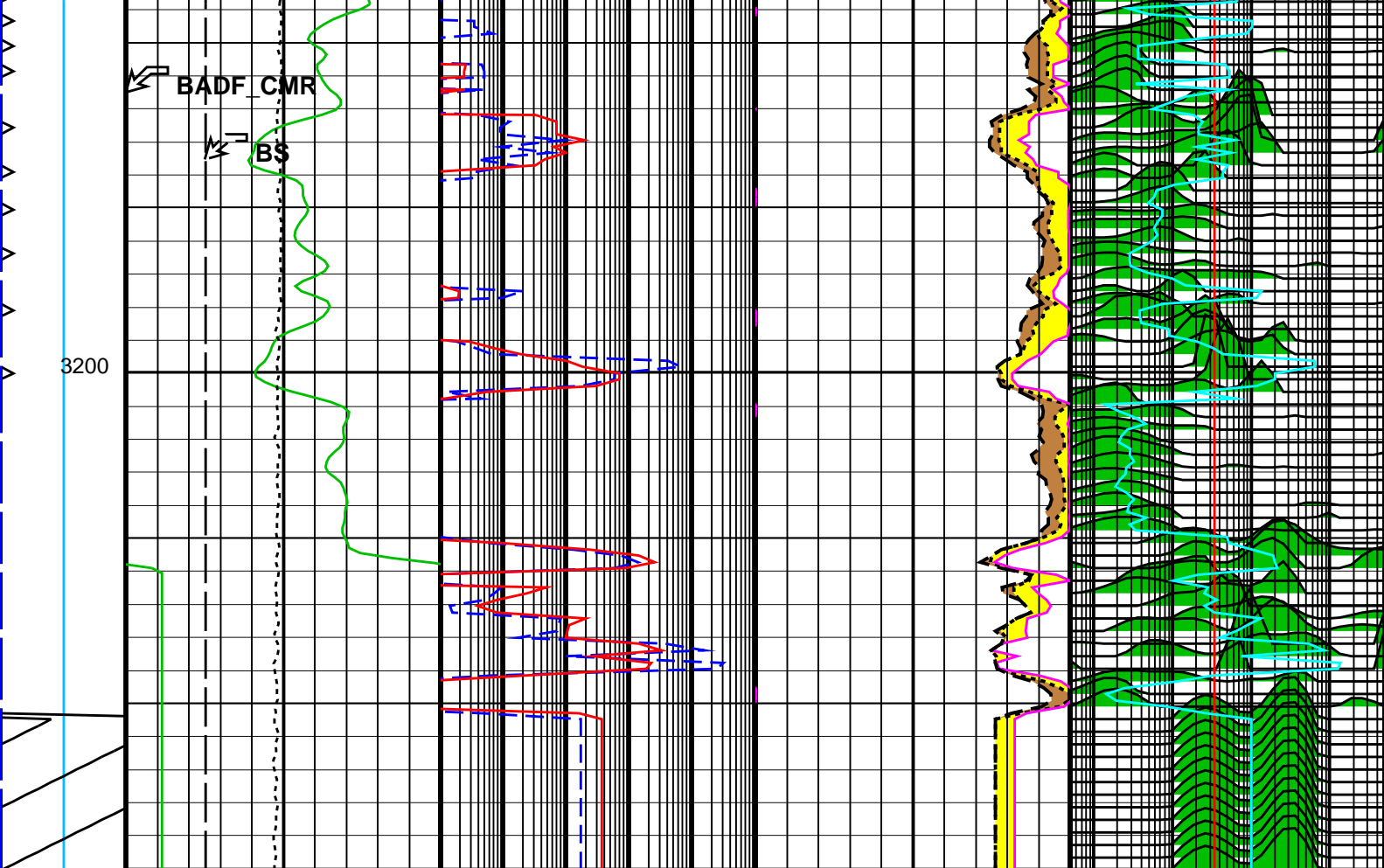












Bad Hole Flag	Bit Size (BS) (IN)	SDR Permeability (KSDR) (MD)	CMR Free Fluid Porosity (CMFF) (V/V)	Bound Fluid Cutoff (T2CUTOFF) (MS)
	616	0.110000	0.600	0.55000
Insuff. WT Flag	Gamma Ray (GR_EDTC) (GAPI)	Timur/Coates Permeability (KTIM) (MD)	CMR 3ms Porosity (CMRP_3MS) (V/V)	T2 Logarithmic Mean (T2LM) (MS)
	0200	0.110000	0.600	0.55000
Caution Moderate Noise	Tension (TENS) (LBF)		Total CMR Porosity (TCMR) (V/V)	T2 Distribution (T2_DIST_MW) (US)
	100000		0.600	6089
Noise Out of Tolerance			Capillary Bound Fluid Porosity	
(NO_UPDATE_COUNT)			Small Pore Porosity	
0 (----)10				
Tuning Mode (TUNING_MODE)				
-1 (----) 3				

PIP SUMMARY

Time Mark Every 60 S

Parameters

DLIS Name	Description	Value
-----------	-------------	-------

System and Miscellaneous

BS	Bit Size	8.500 IN
DO	Depth Offset for Playback	4.9 M
DORI	Depth Offset for Repeat Analysis	0.0 M

DORE PP	Depth Onset for Repeat Analysis Playback Processing				0.0 M NORMAL	
Format: CMRT_DEPTH_LOG		Vertical Scale: 1:200		Graphics File Created: 19-Nov-2009 09:36		
OP System Version: 17C0-154						
SPA-A	17C0-154		HRLT-B	17C0-154		
HILTH-FTB	17C0-154		HNGC-B	17C0-154		
HNGS-BA	SPC-3867-NUCL		CMRT-B	SPC-3874-CMR		
EDTC-B	SKK-3882-EDTCB					
Input DLIS Files						
DEFAULT	HRLA_TLD_MCFL_CNL_079LUP	FN:89	PRODUCER	19-Nov-2009 09:13	3229.9 M	2766.0 M
Output DLIS Files						
DEFAULT	HRLA_TLD_MCFL_CNL_083PUP	FN:97	PRODUCER	19-Nov-2009 09:36		
RTBK	HRLA_TLD_MCFL_CNL_083PUP	FN:98	PRODUCER	19-Nov-2009 09:35		