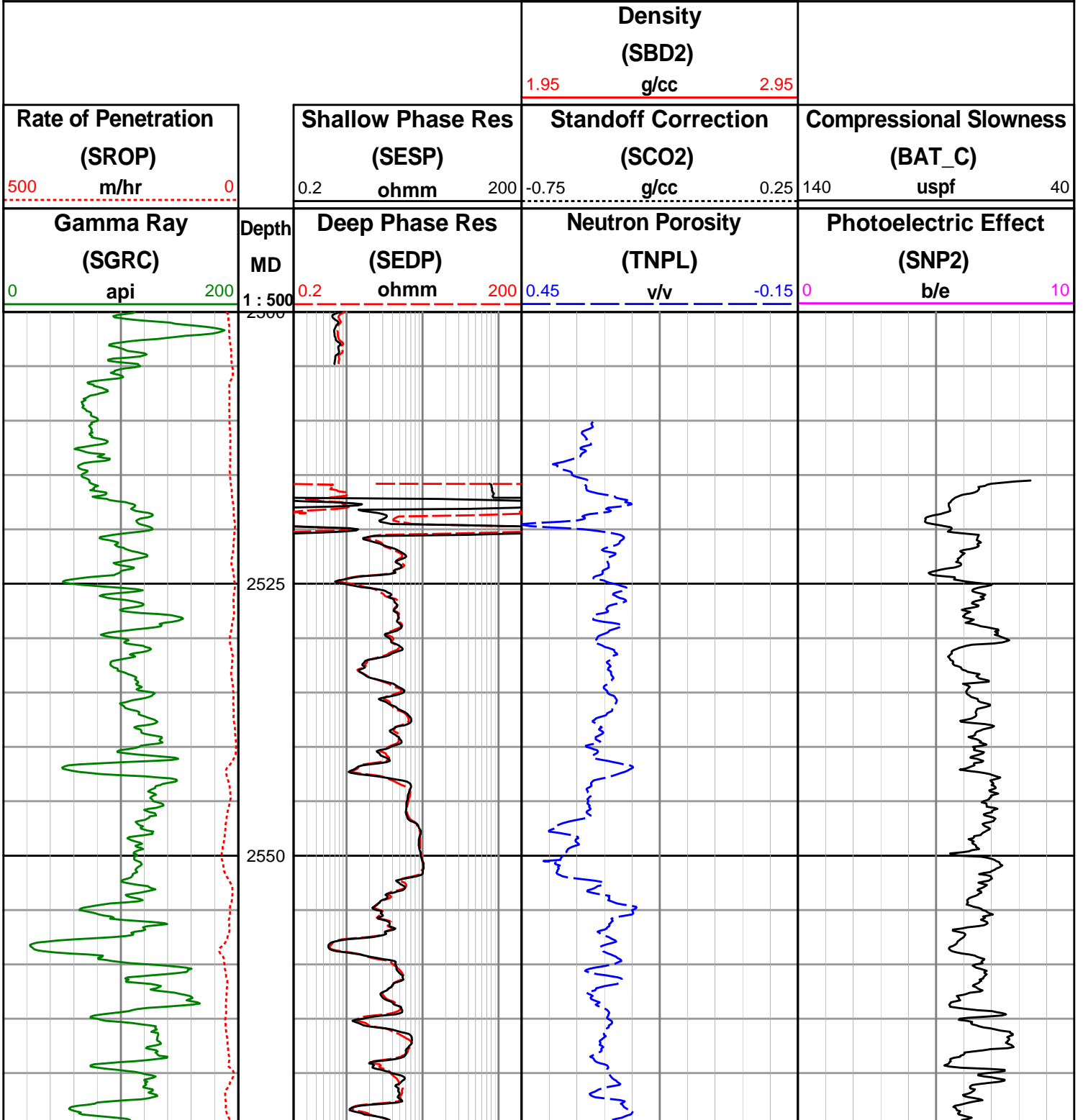


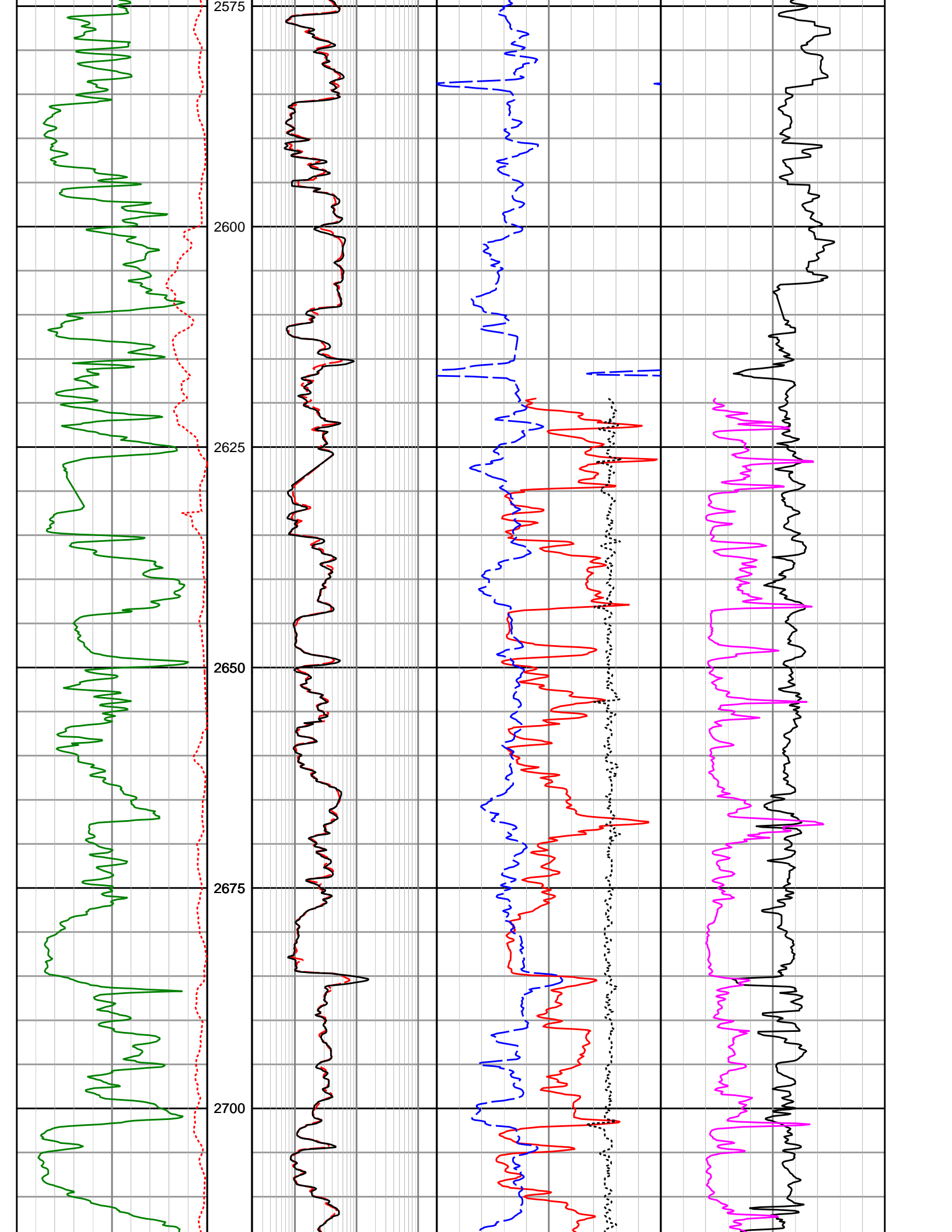
Origin Energy Resources Ltd

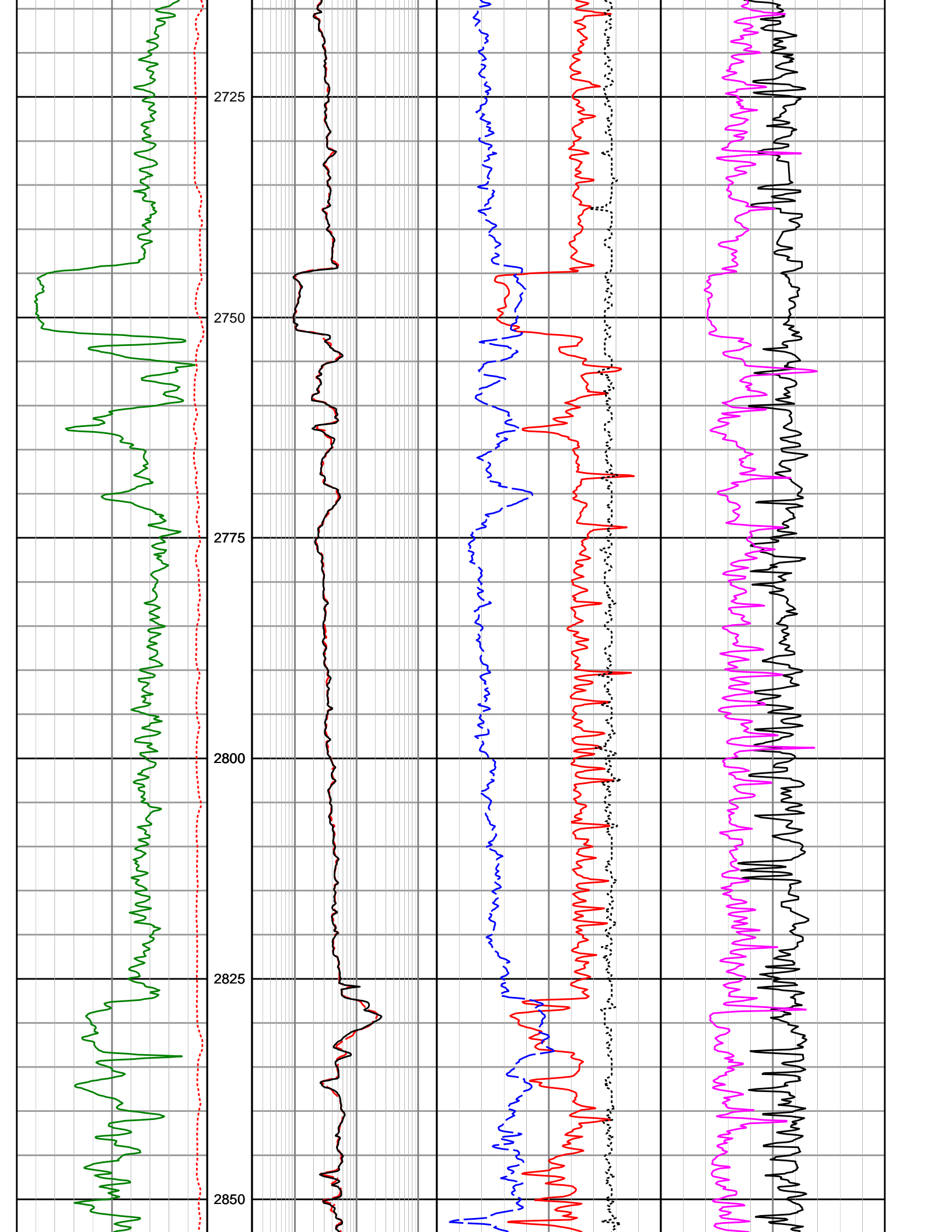
Trefoil-2

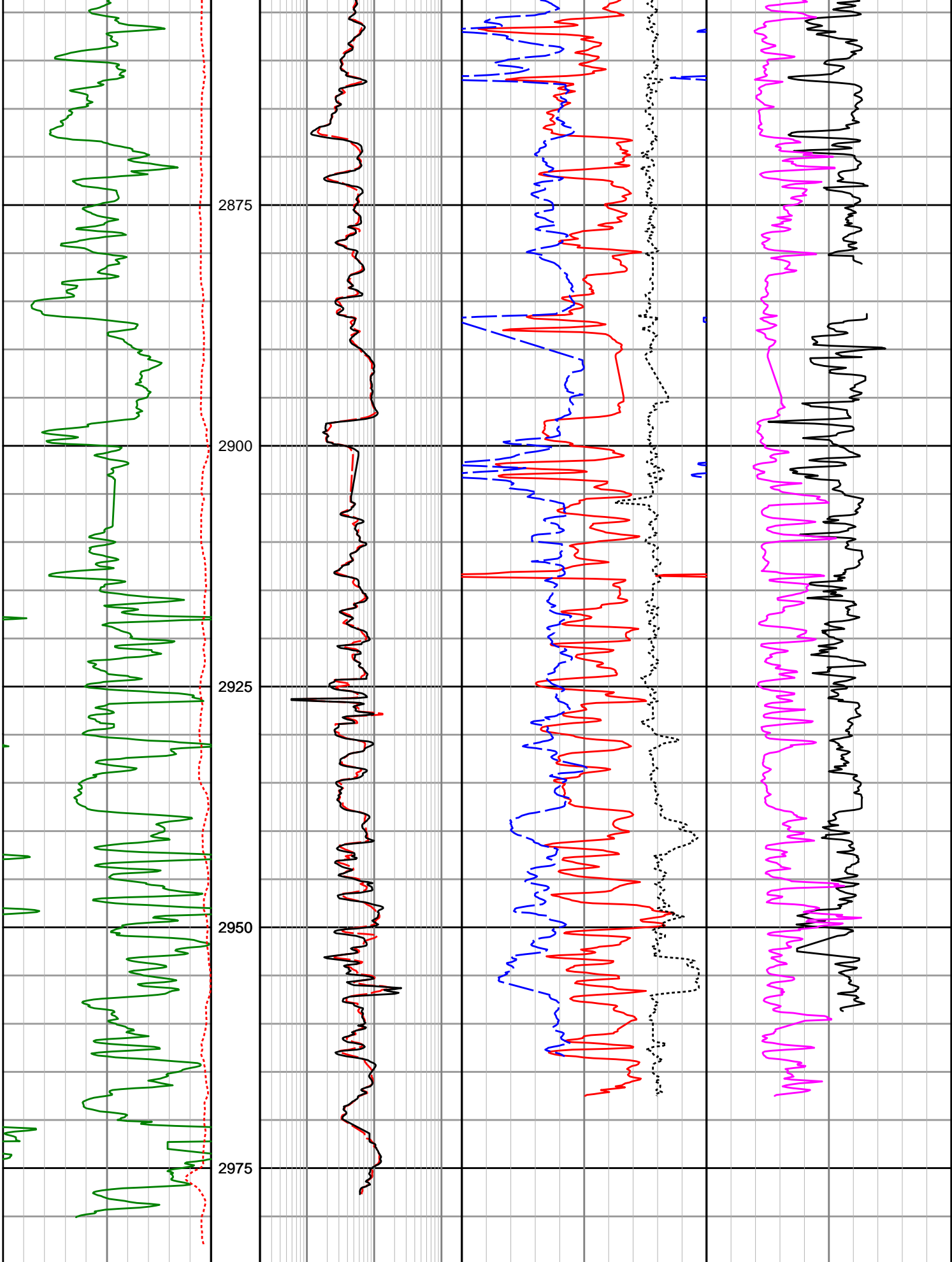
Realtime LWD Data

- Gamma Ray logged through casing from 2507.01 to 2518.45 mMDRT.
- No Density data is shown between 2510.0 to 2619.5 mMDRT due to tool failure.









Gamma Ray (SGRC) 0 200 api	Depth MD	Deep Phase Res (SEDP) 0.2 200 ohmm	Neutron Porosity (TNPL) 0.45 -0.15 0 v/v	Photoelectric Effect (SNP2) 10 b/e
--	-----------------	--	---	---

Rate of Penetration (SROP) 500 m/hr 0	Shallow Phase Res (SESP) 0.2 ohmm 200	Standoff Correction (SCO2) -0.75 g/cc 0.25	Compressional Slowness (BAT_C) 140 uspf 40
		Density (SBD2) 1.95 g/cc 2.95	