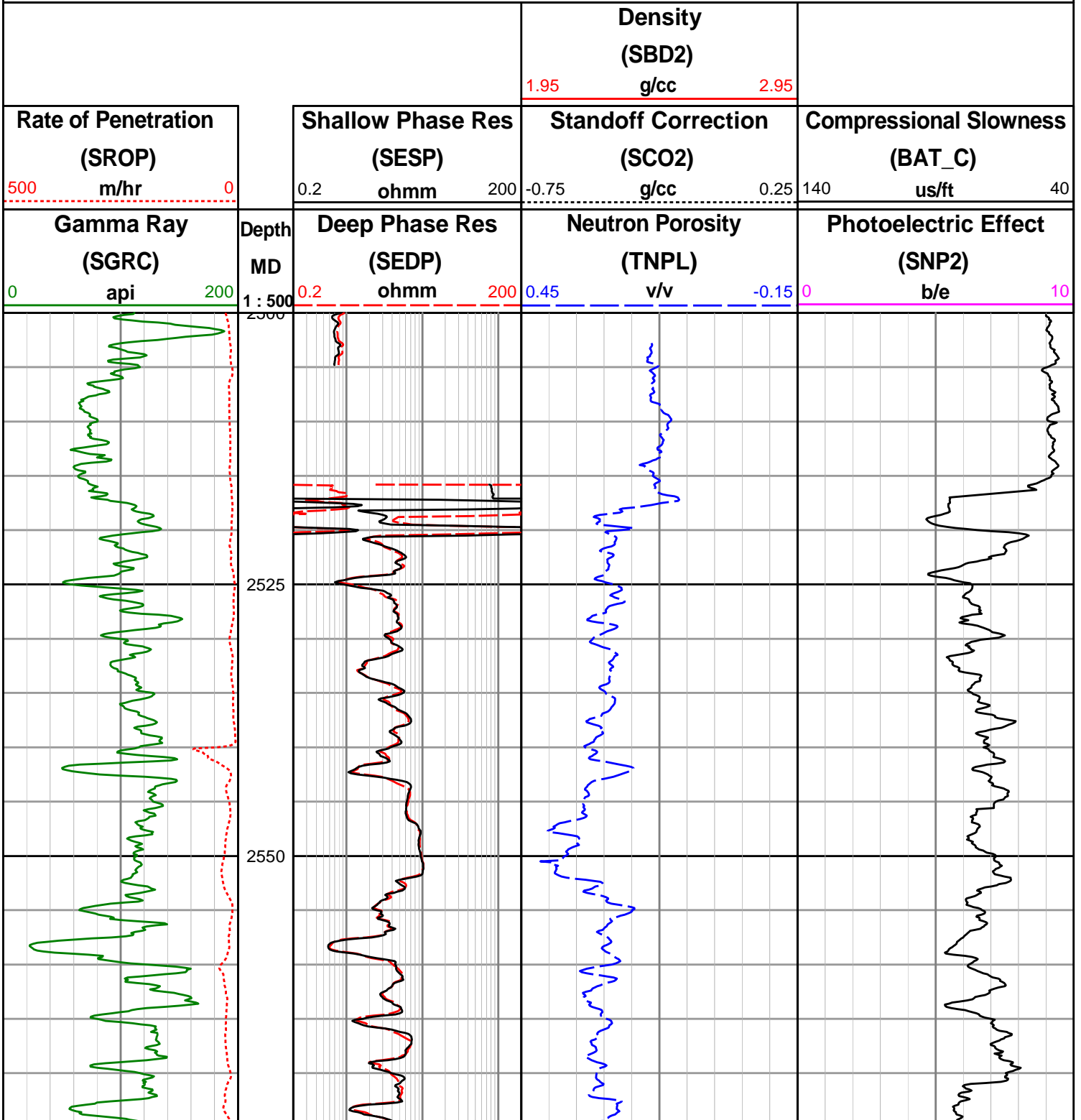


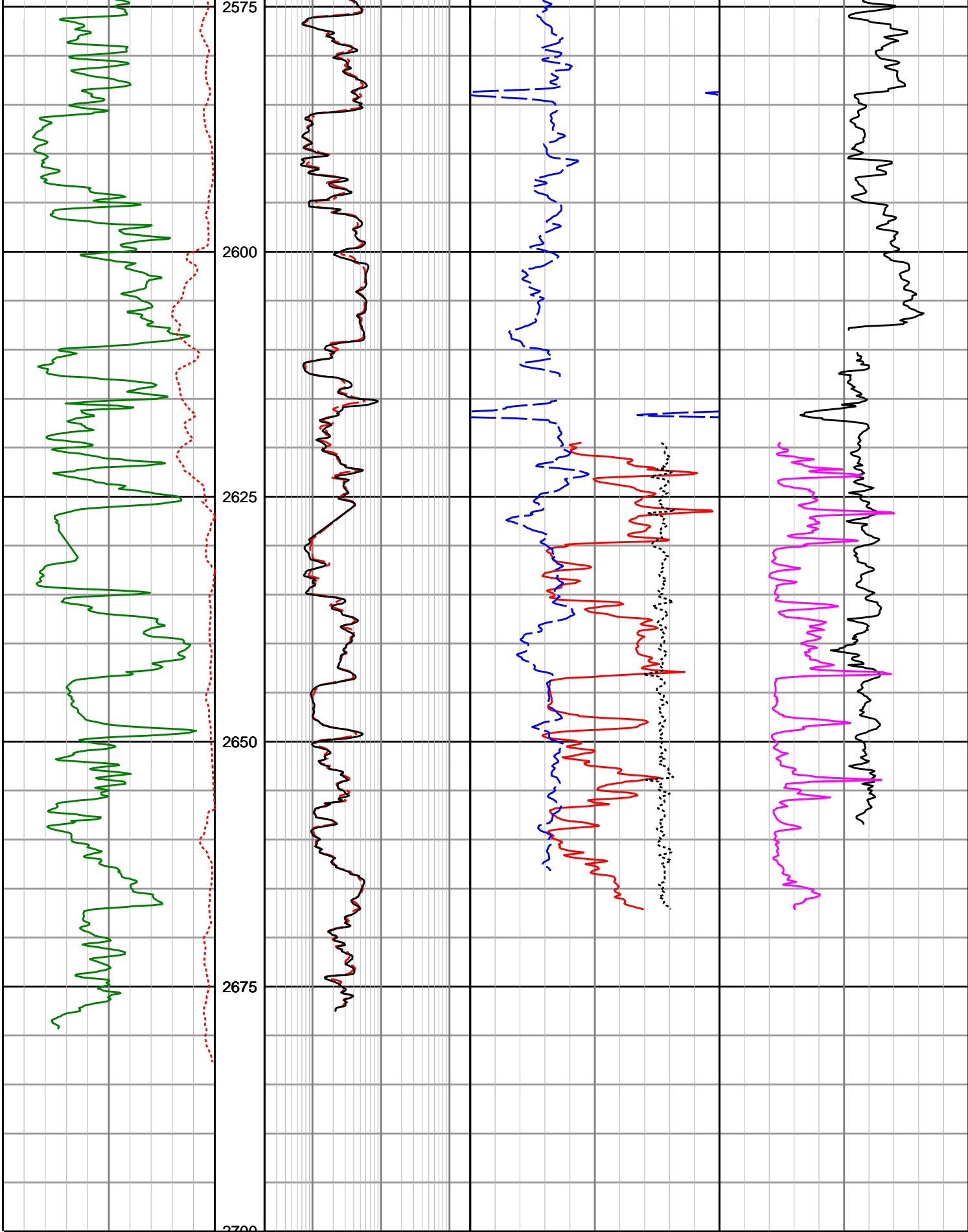
# Origin Energy Resources Ltd

## Trefoil-2

### Realtime LWD Data

No Density data is shown between 2520.0 - 2633.0 mMDRT due to tool problems.





<p><b>Gamma Ray (SGRC)</b> api</p> <p>0 200</p>	<p>Depth MD</p> <p>1 : 500</p>	<p><b>Deep Phase Res (SEDP)</b> ohmm</p> <p>0.2 200</p>	<p><b>Neutron Porosity (TNPL)</b> v/v</p> <p>0.45 -0.15</p>	<p><b>Photoelectric Effect (SNP2)</b> b/e</p> <p>0 10</p>
---	--------------------------------	---	---	---

<p><b>Rate of Penetration (ROP)</b></p>	<p><b>Shallow Phase Res (SESP)</b></p>	<p><b>Standoff Correction (SCOR)</b></p>	<p><b>Compressional Slowness (PAC)</b></p>
---	--	--	--

<b>(SROP)</b> m/hr 500 0	<b>(SESP)</b> ohmm 0.2 200	<b>(SCO2)</b> g/cc -0.75 0.25	<b>(BAI_C)</b> us/ft 140 40
		<b>Density</b> <b>(SBD2)</b> g/cc 1.95 2.95	