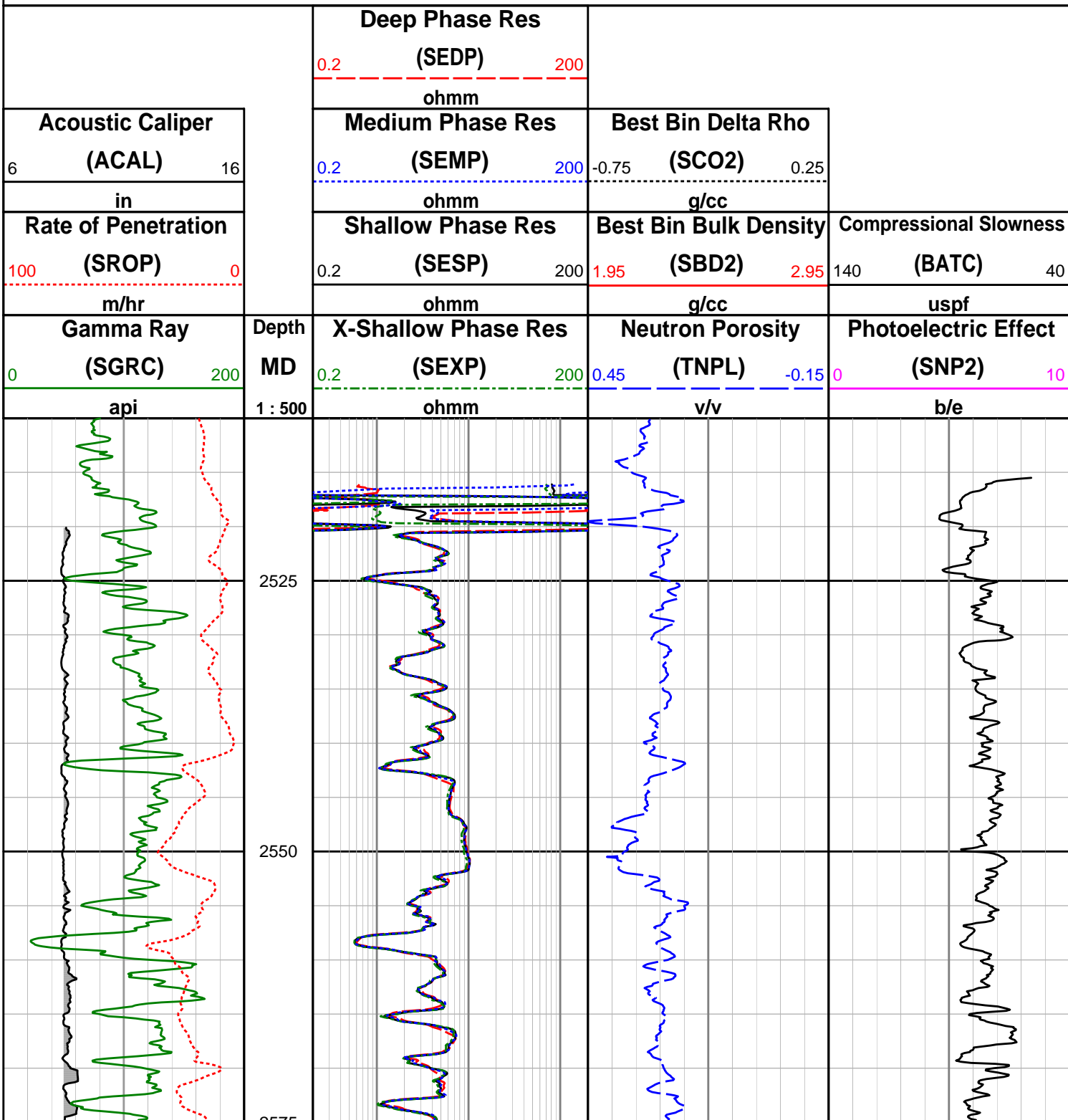


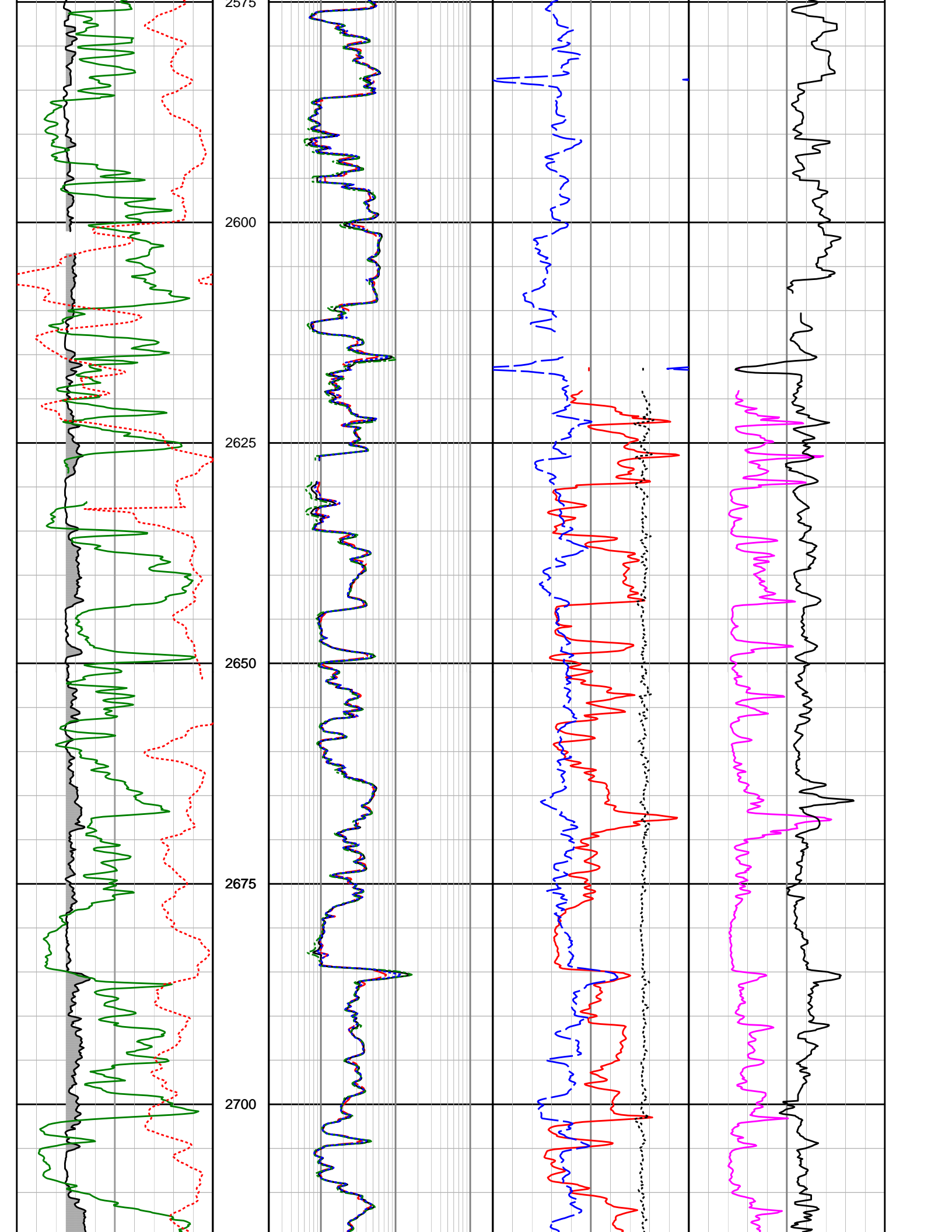
Origing Energy Ltd

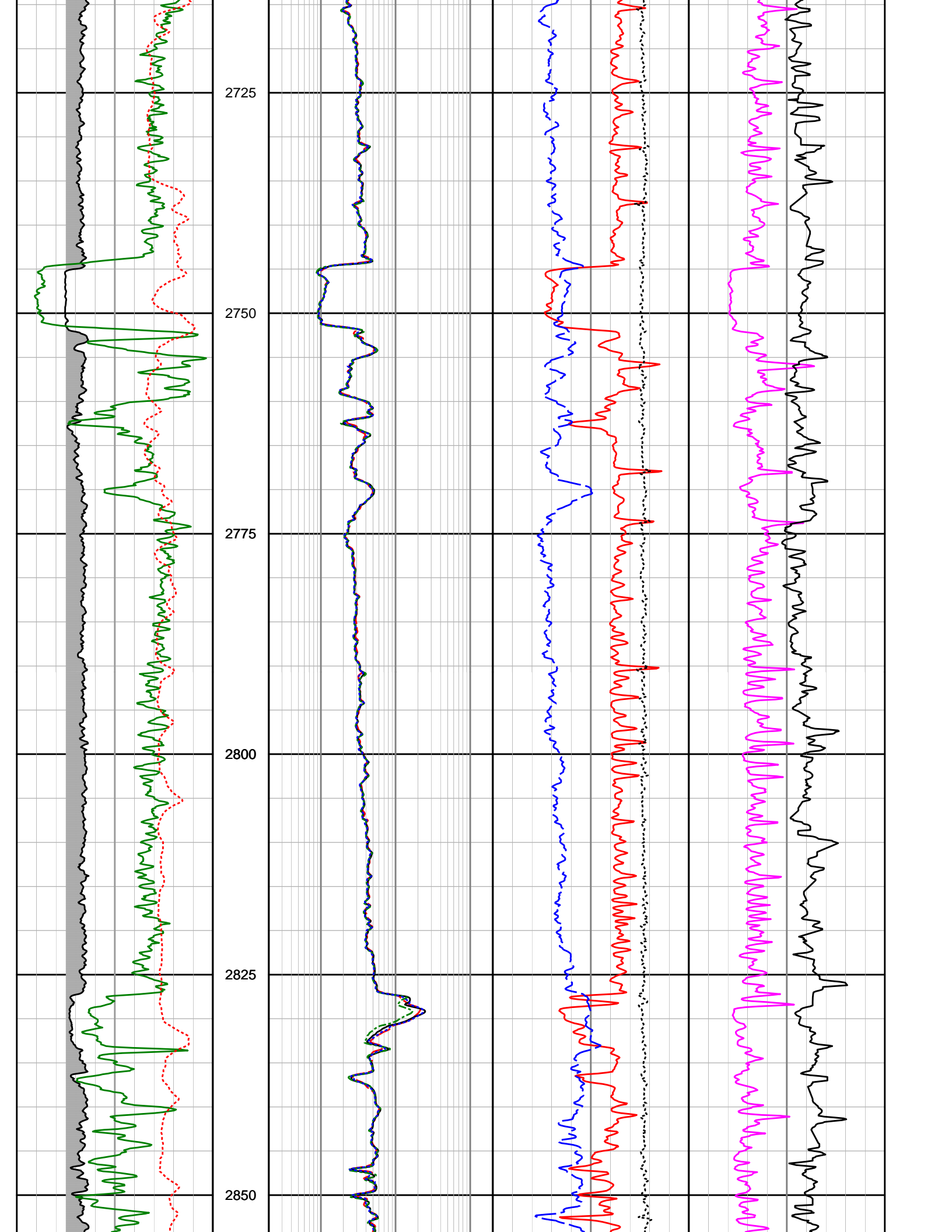
Trefoil-2

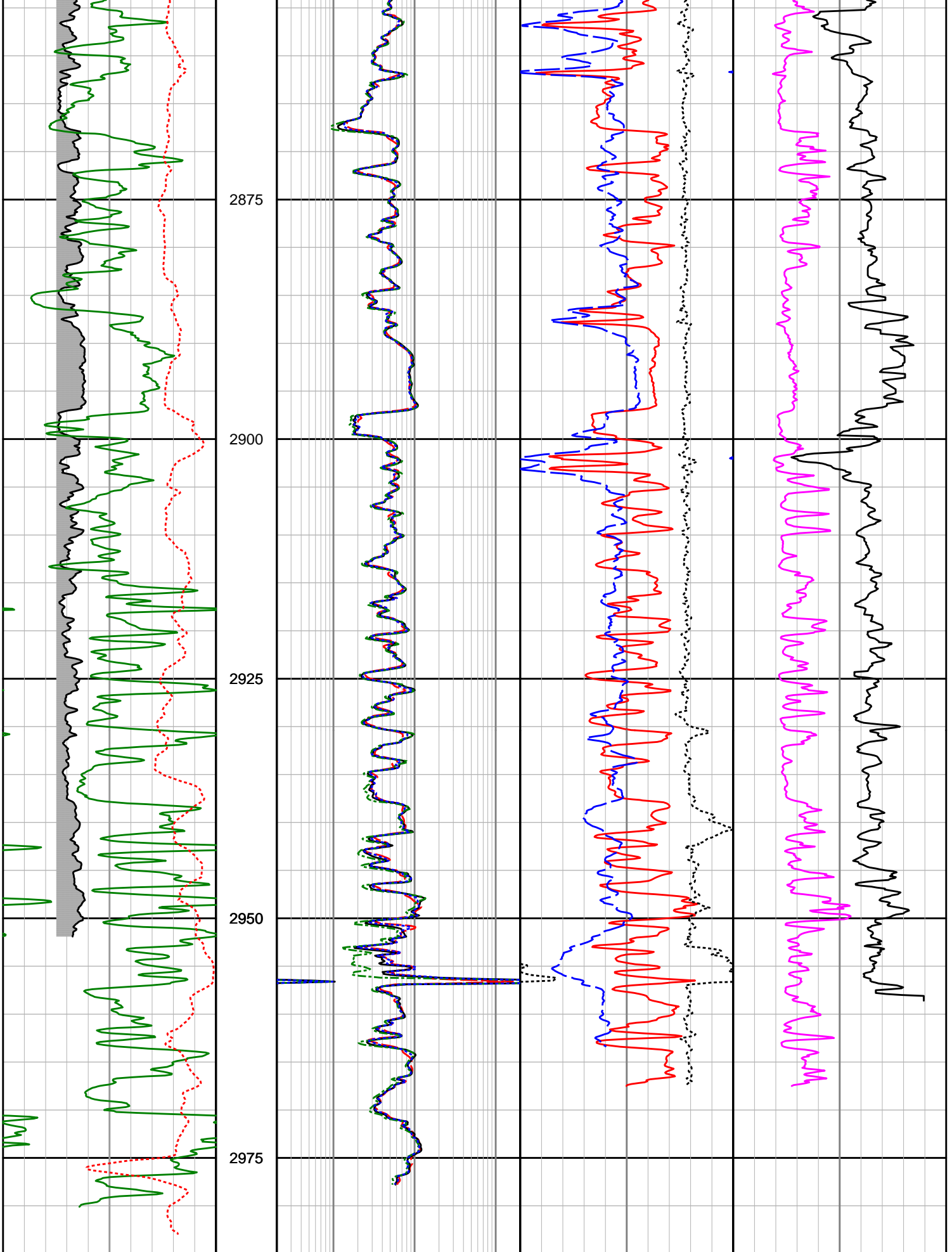
Recorded LWD Data

Gamma Ray (DGR) logged through casing from 2507.01 to 2518.45 mMDRT.
 No density data presented from 2520.0 - 2633.0 m MDRT due to tool failure.









Gamma Ray (SGRC)	Depth MD	X-Shallow Phase Res (SEXP)	Neutron Porosity (TNPL)	Photoelectric Effect (SNP2)
0 200 ani	1 : 500	0.2 200 ohmm	0.45 -0.15 v/v	0 10 h/e

Rate of Penetration (SROP) 100 0 ----- m/hr	Shallow Phase Res (SESP) 0.2 200 ohmm	Best Bin Bulk Density (SBD2) 1.95 2.95 ----- g/cc	Compressional Slowness (BATC) 140 40 ----- uspf
Acoustic Caliper (ACAL) 6 16 ----- in	Medium Phase Res (SEMP) 0.2 200 ----- ohmm	Best Bin Delta Rho (SCO2) -0.75 0.25 ----- g/cc	
	Deep Phase Res (SEDP) 0.2 200 ----- ohmm		