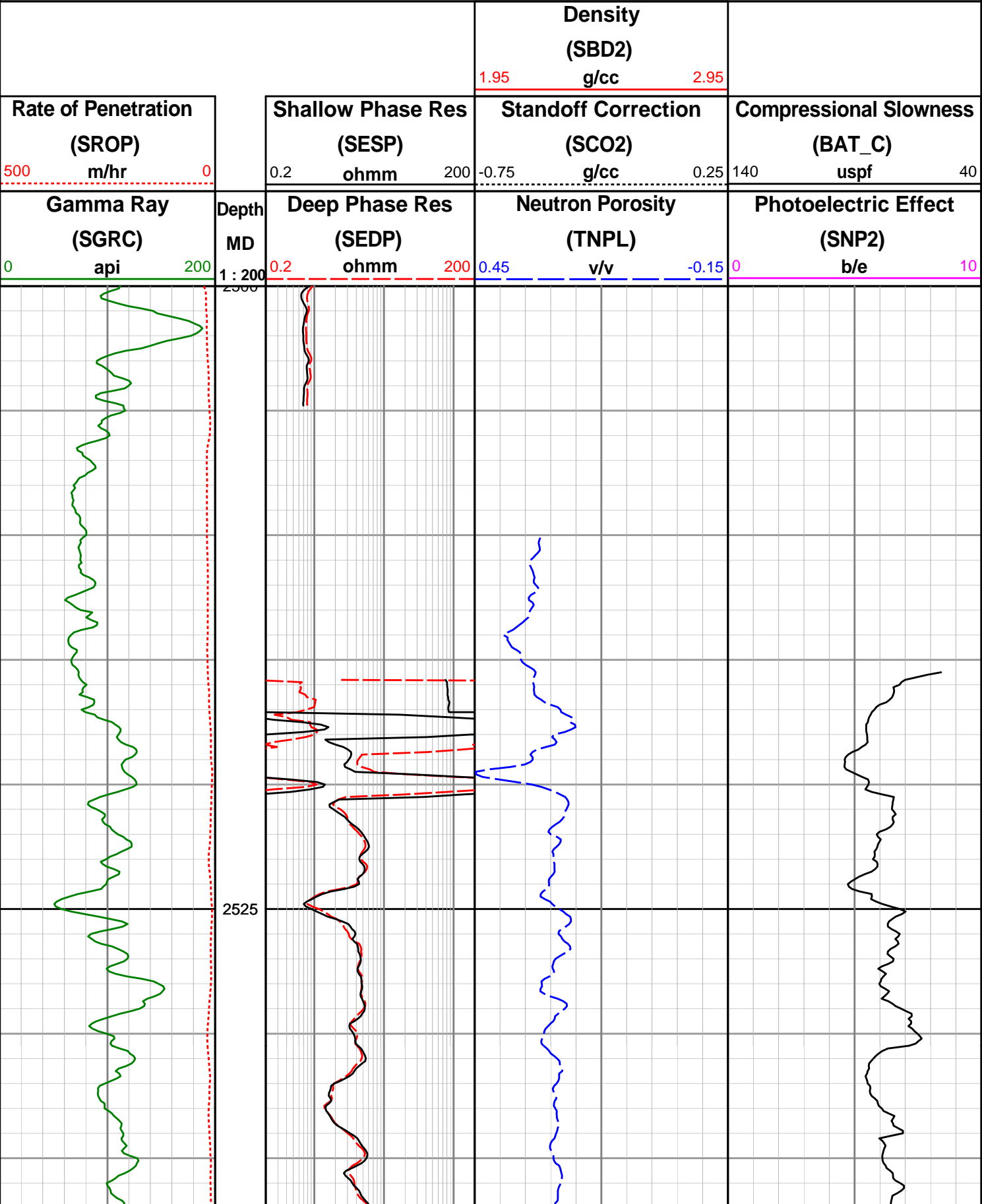
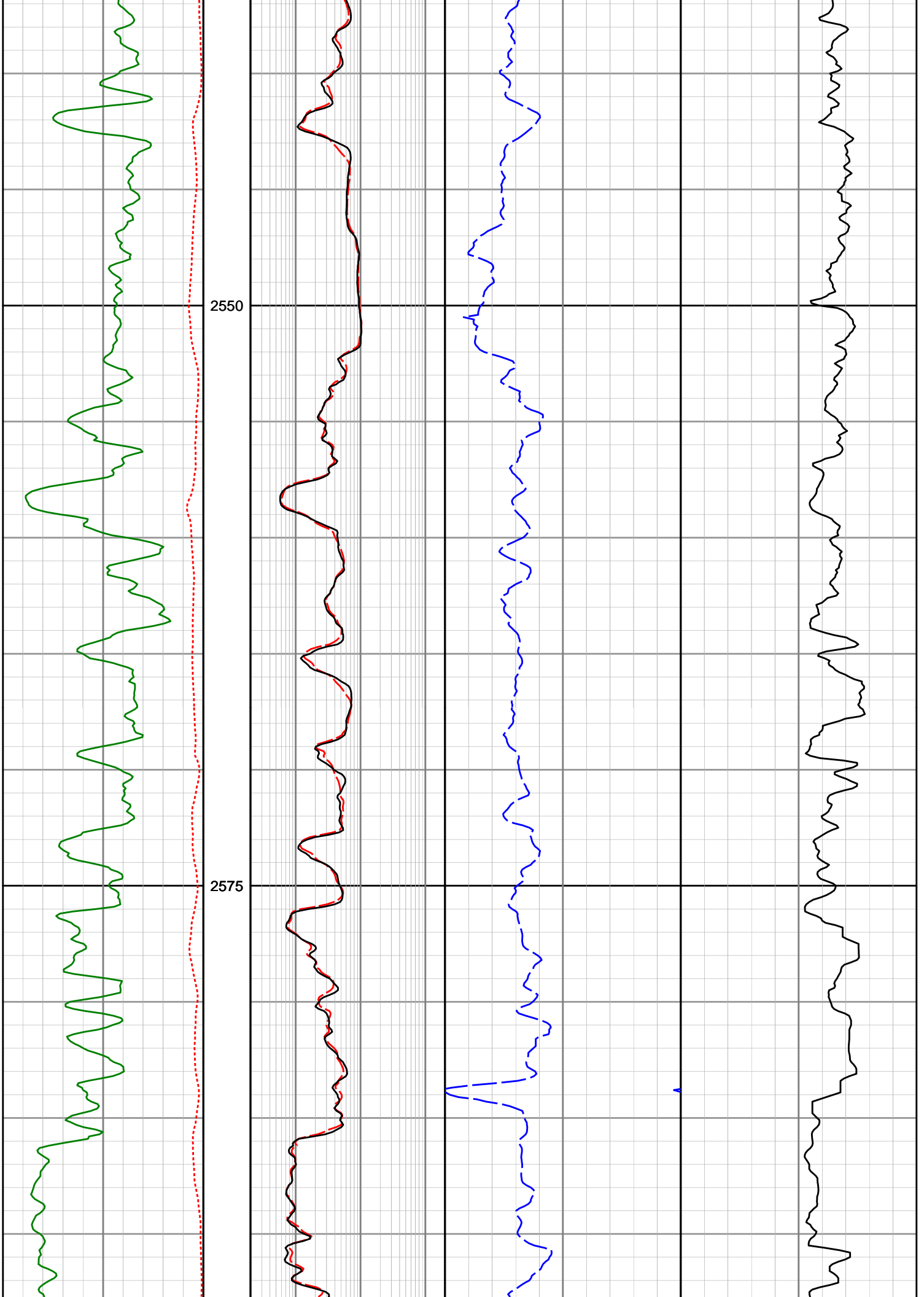


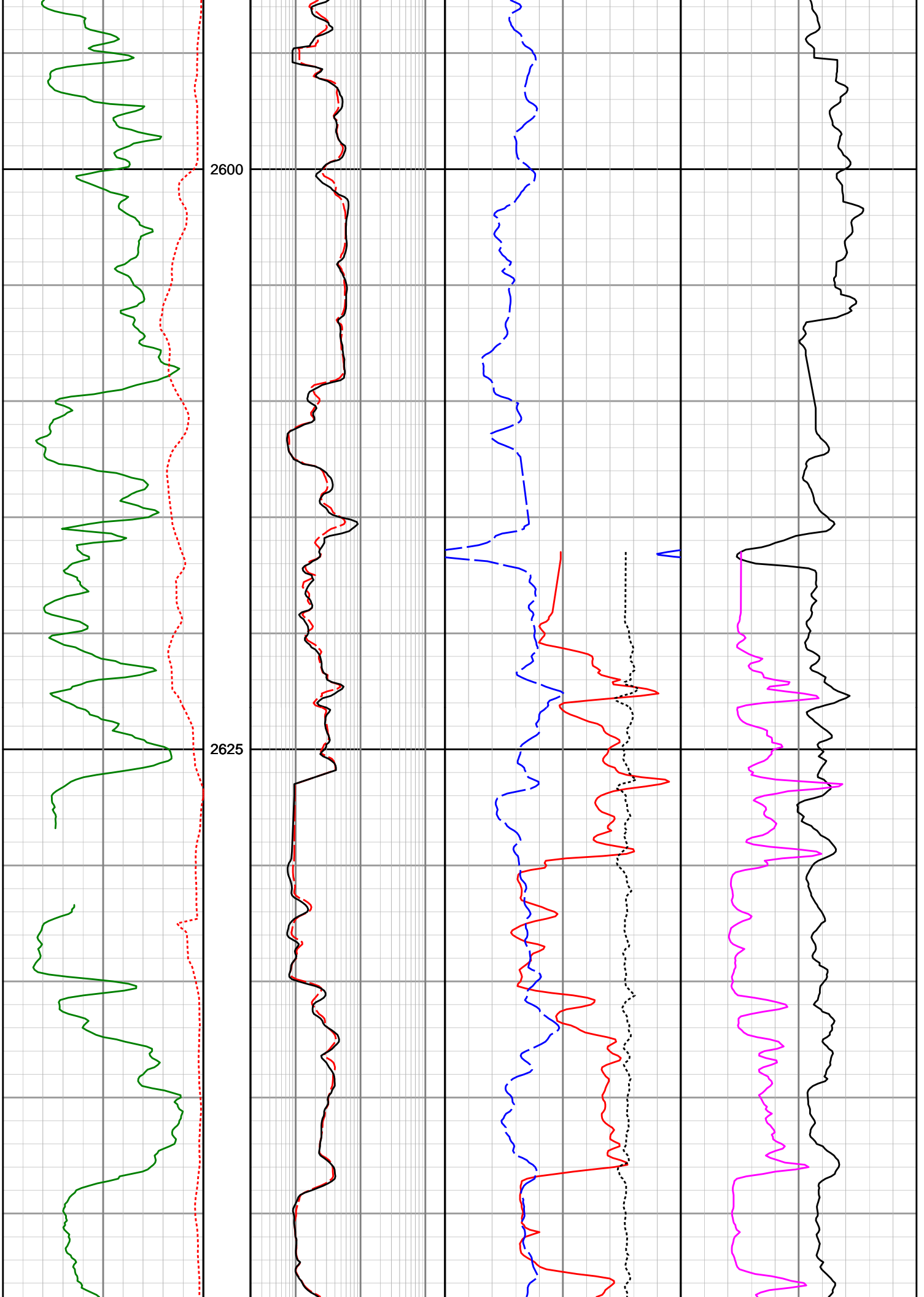
Origin Energy Resources Ltd

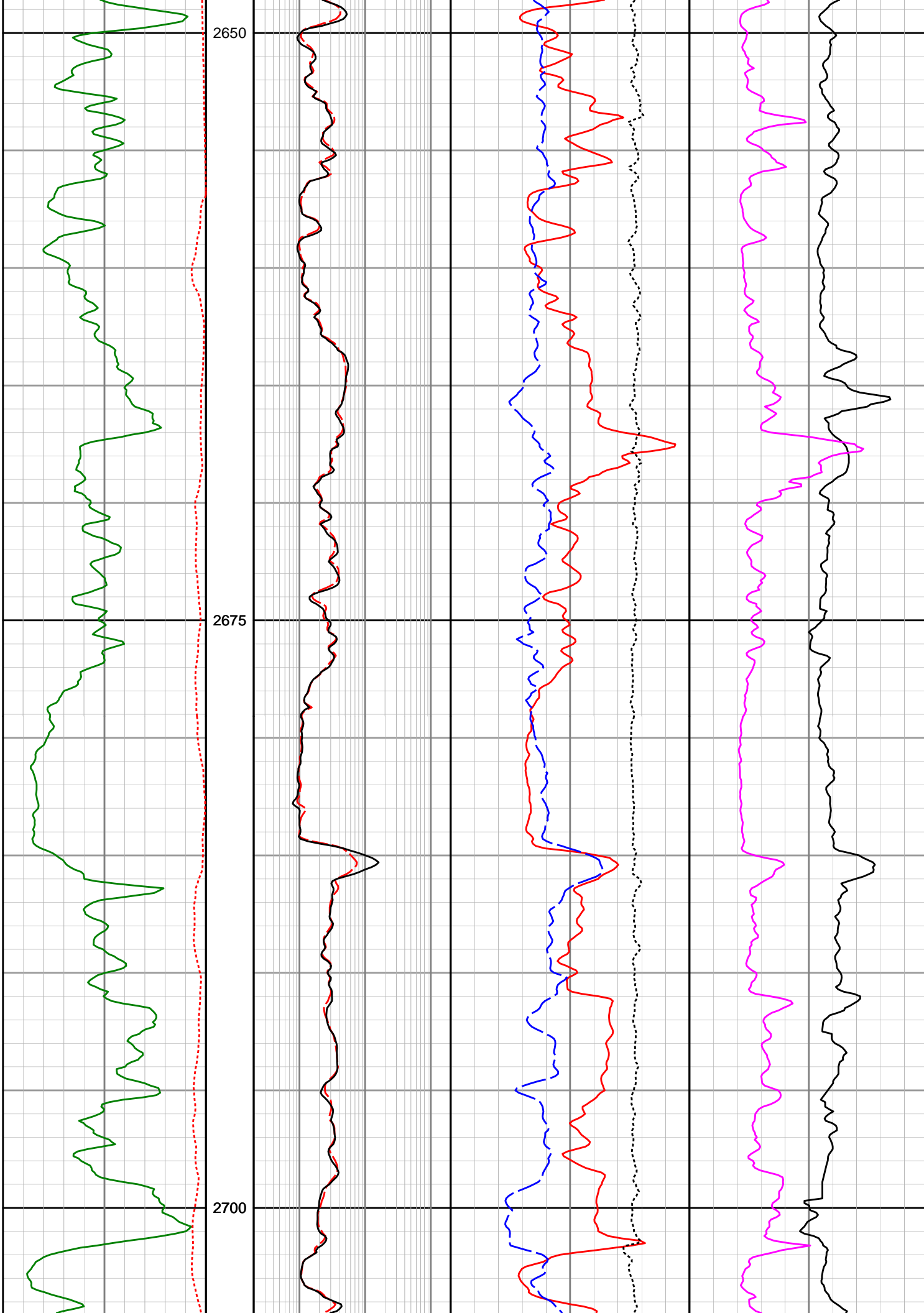
Trefoil-2

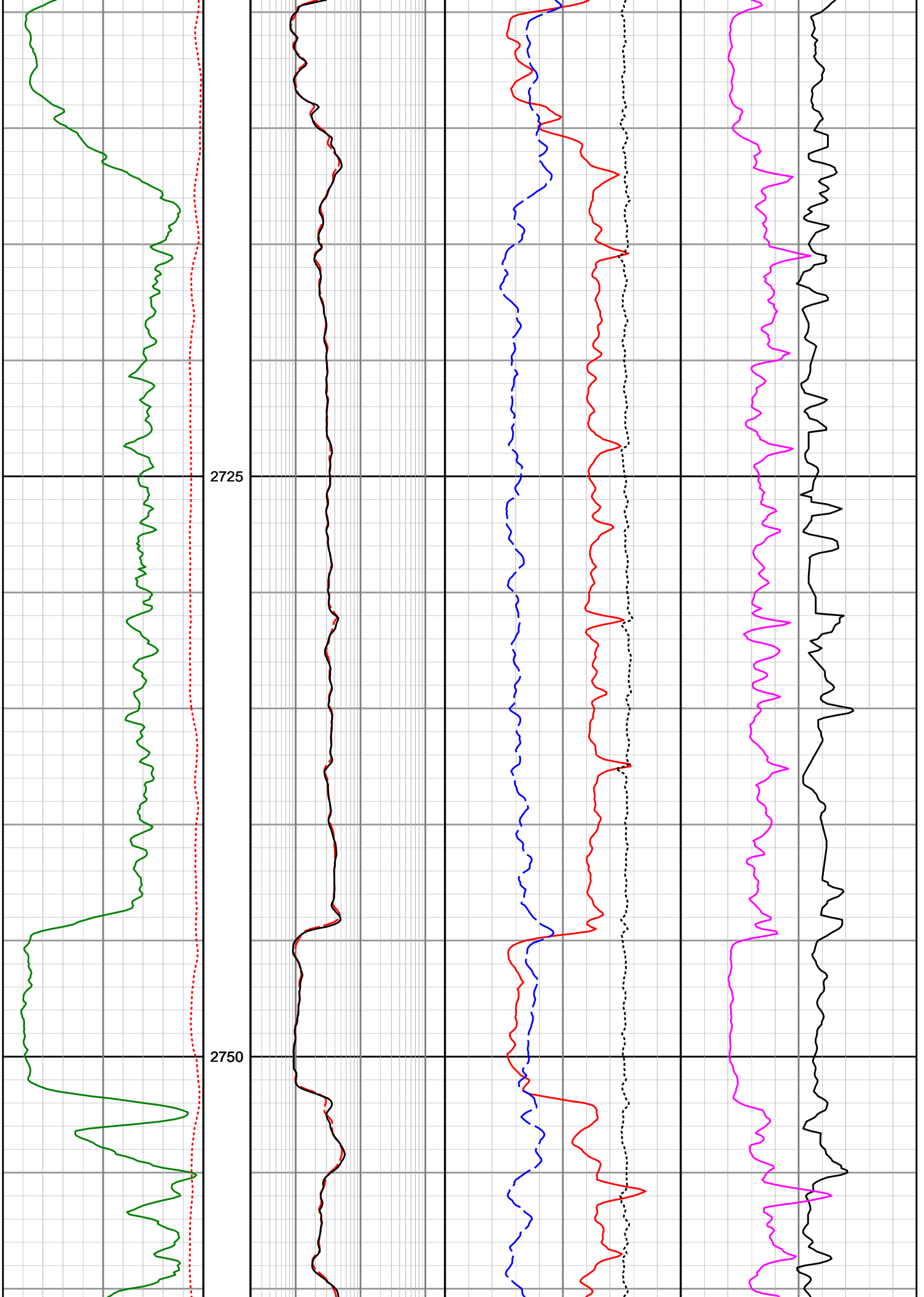
Realtime LWD Data

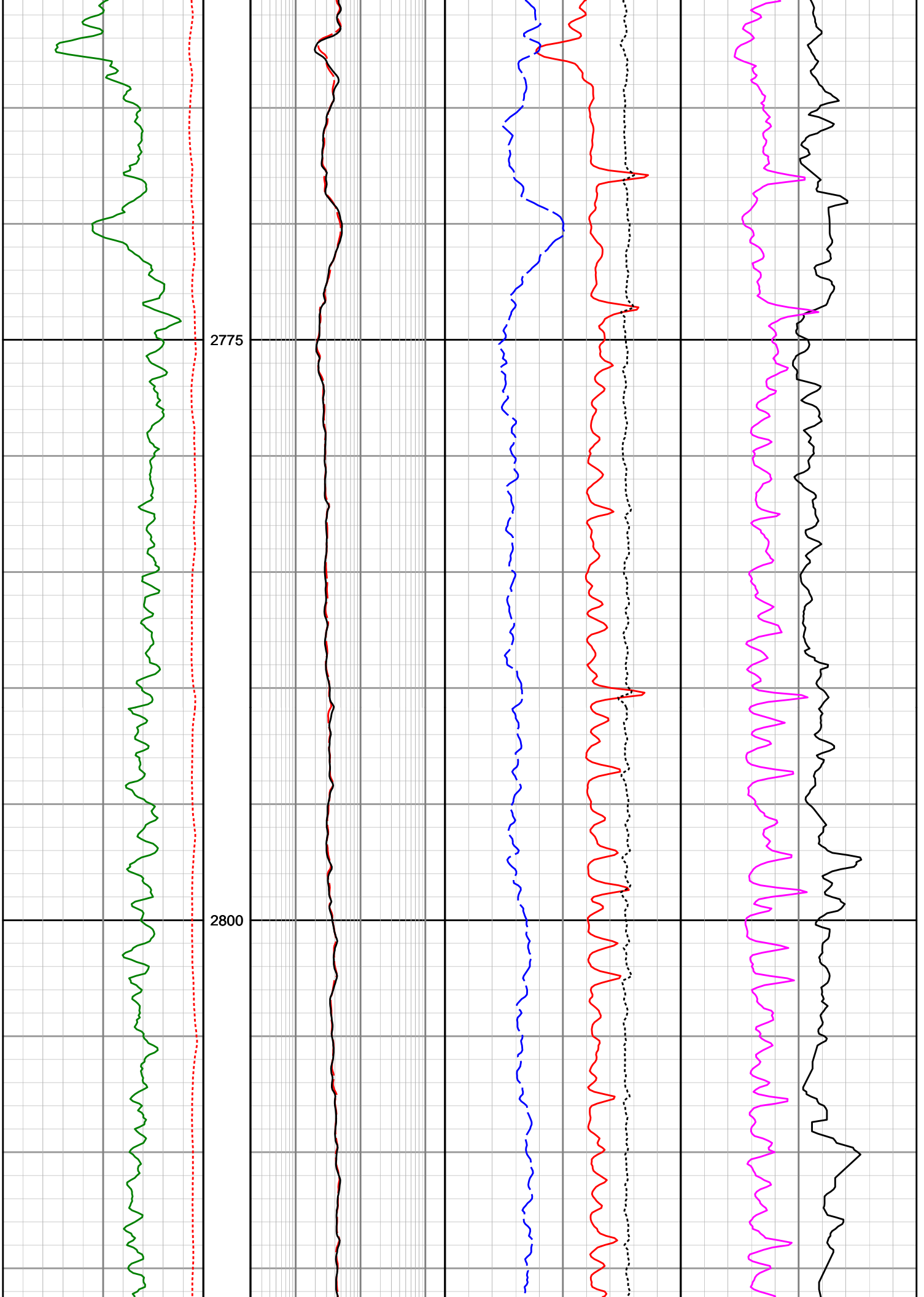


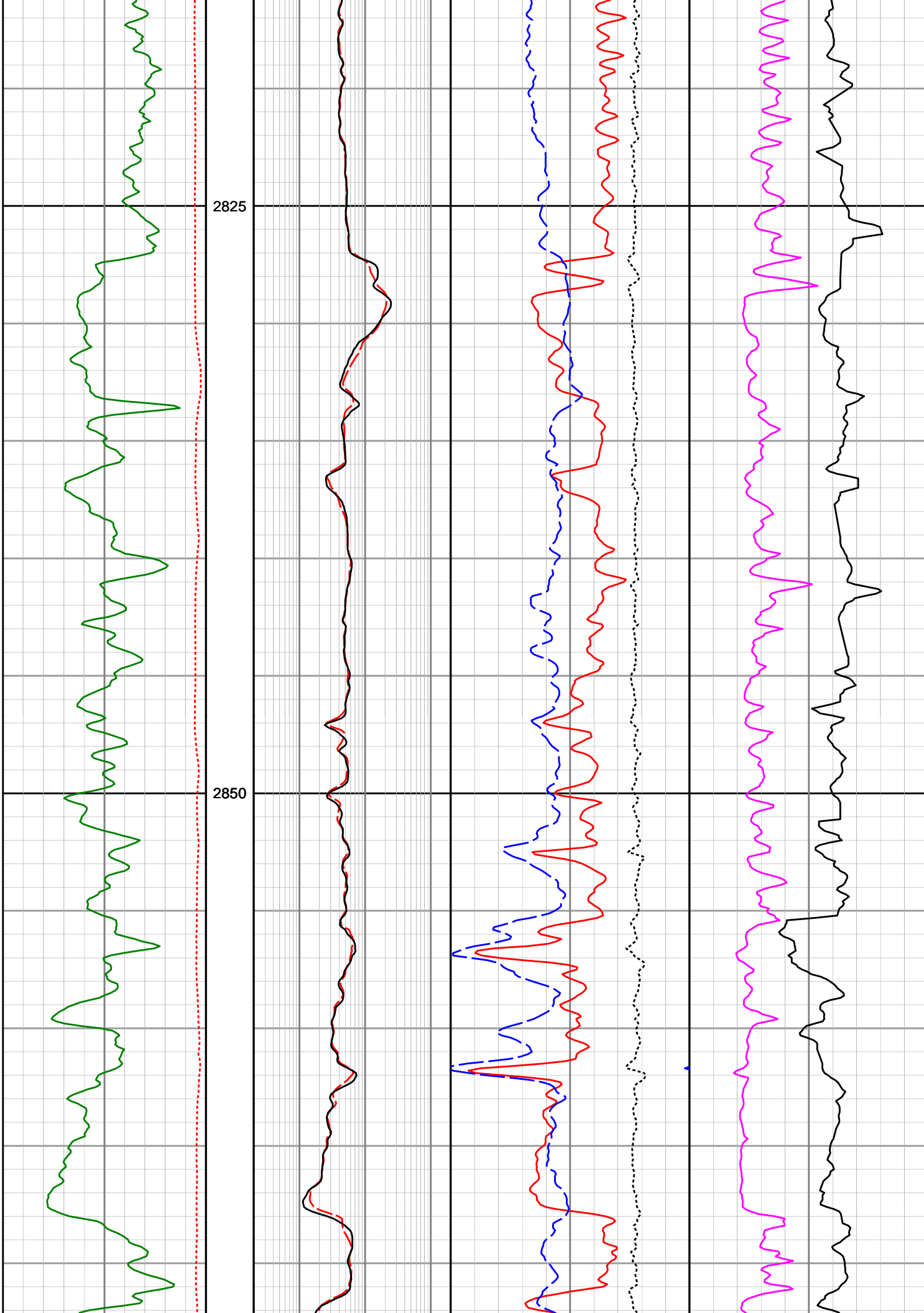


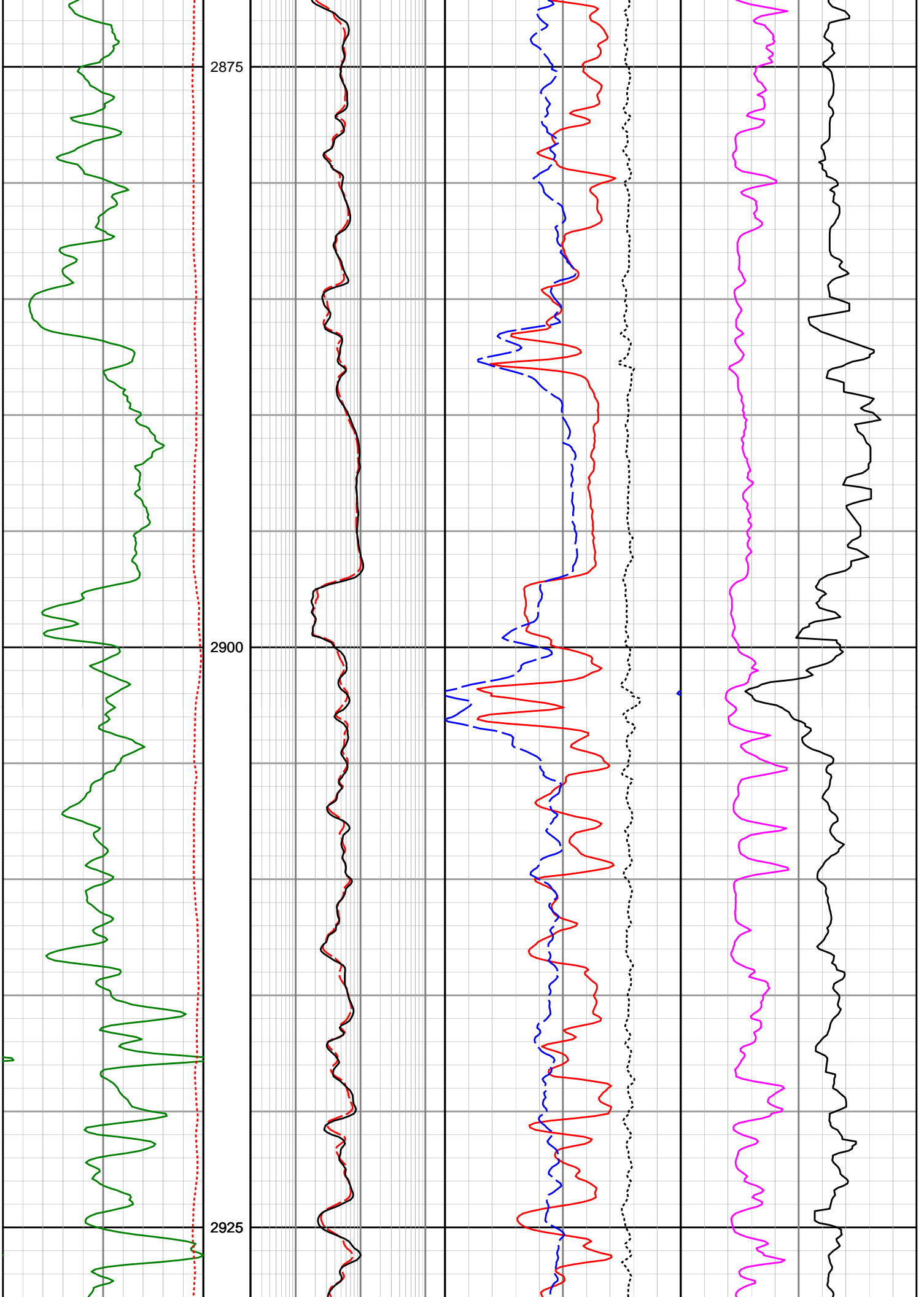


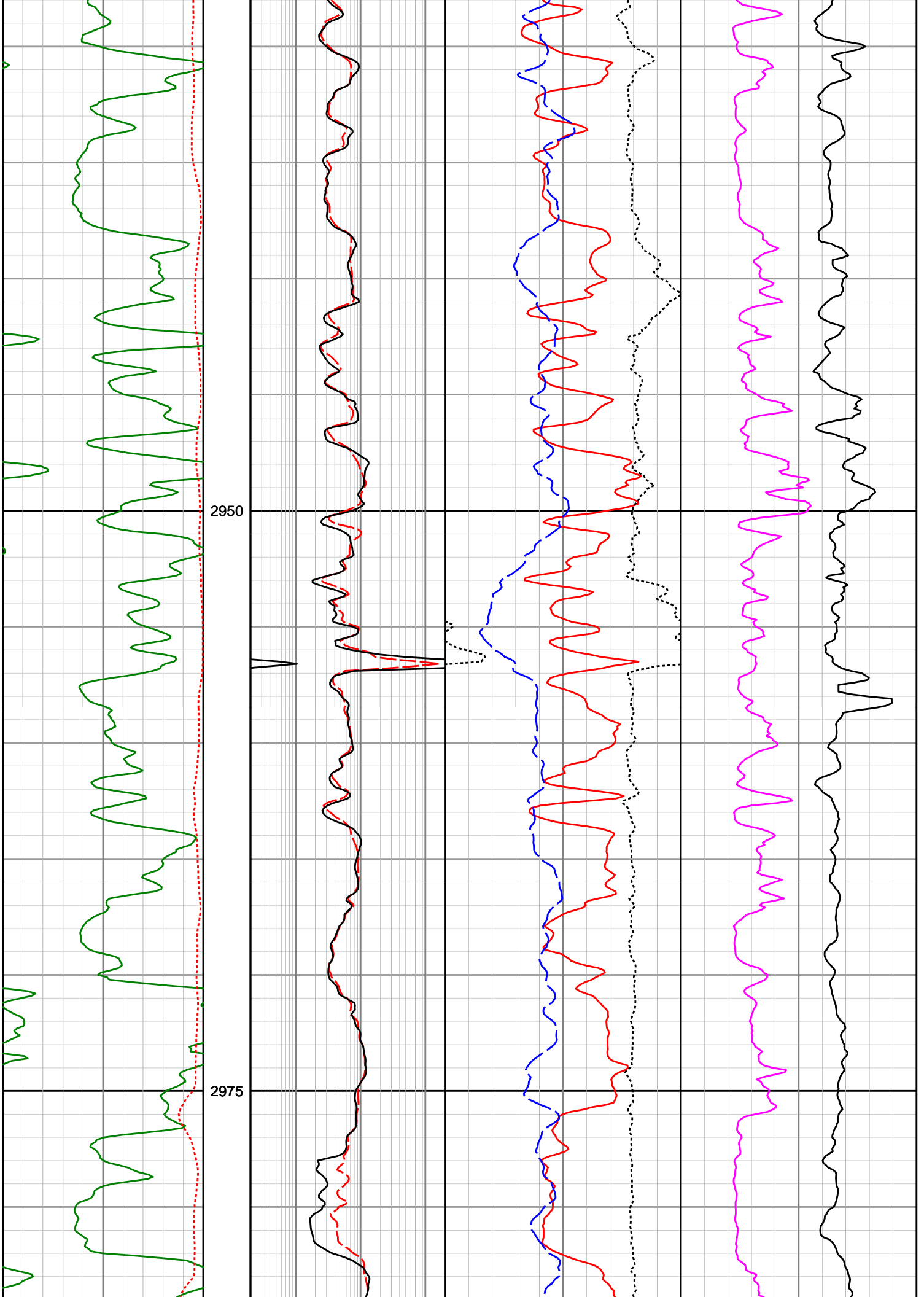


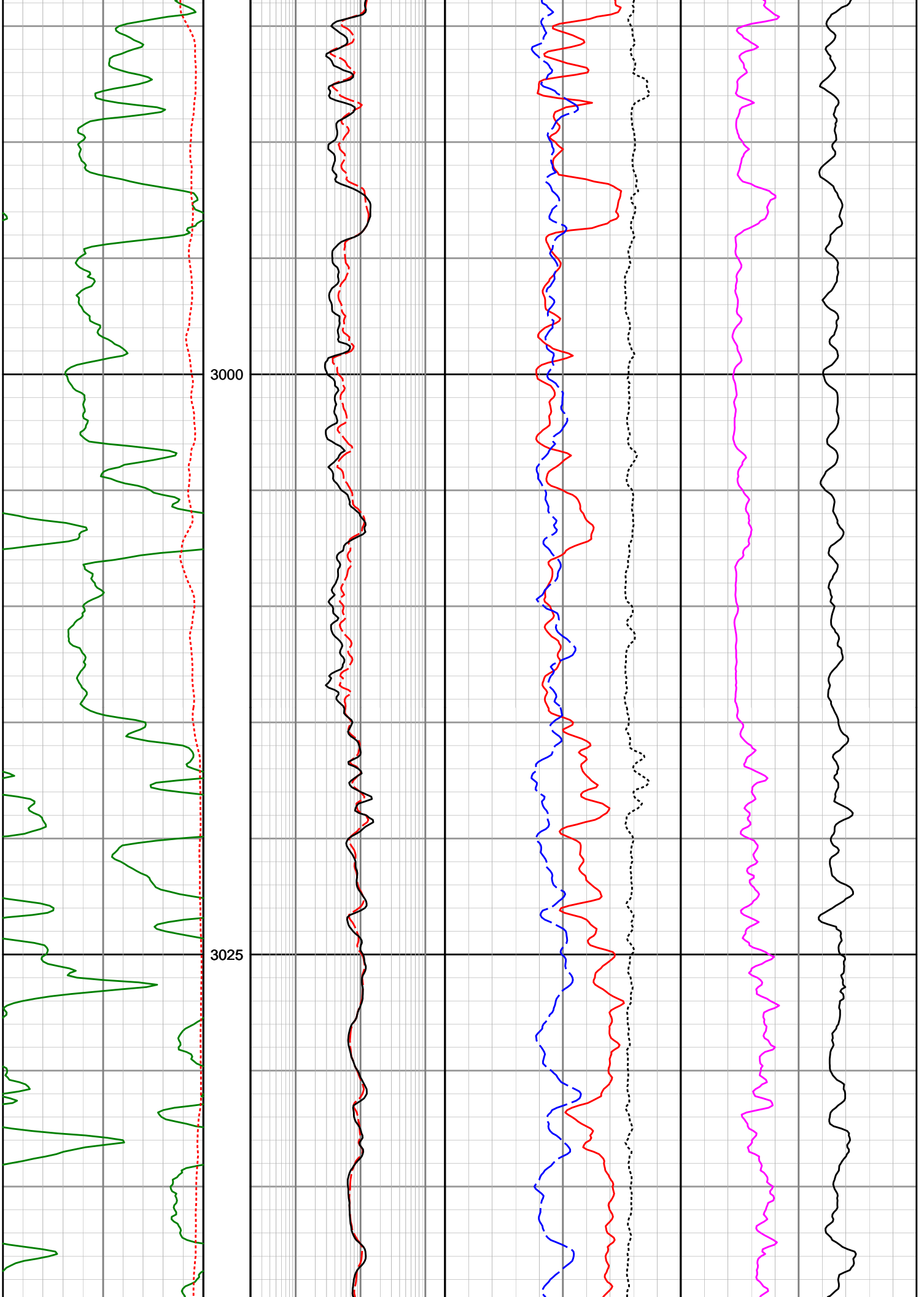


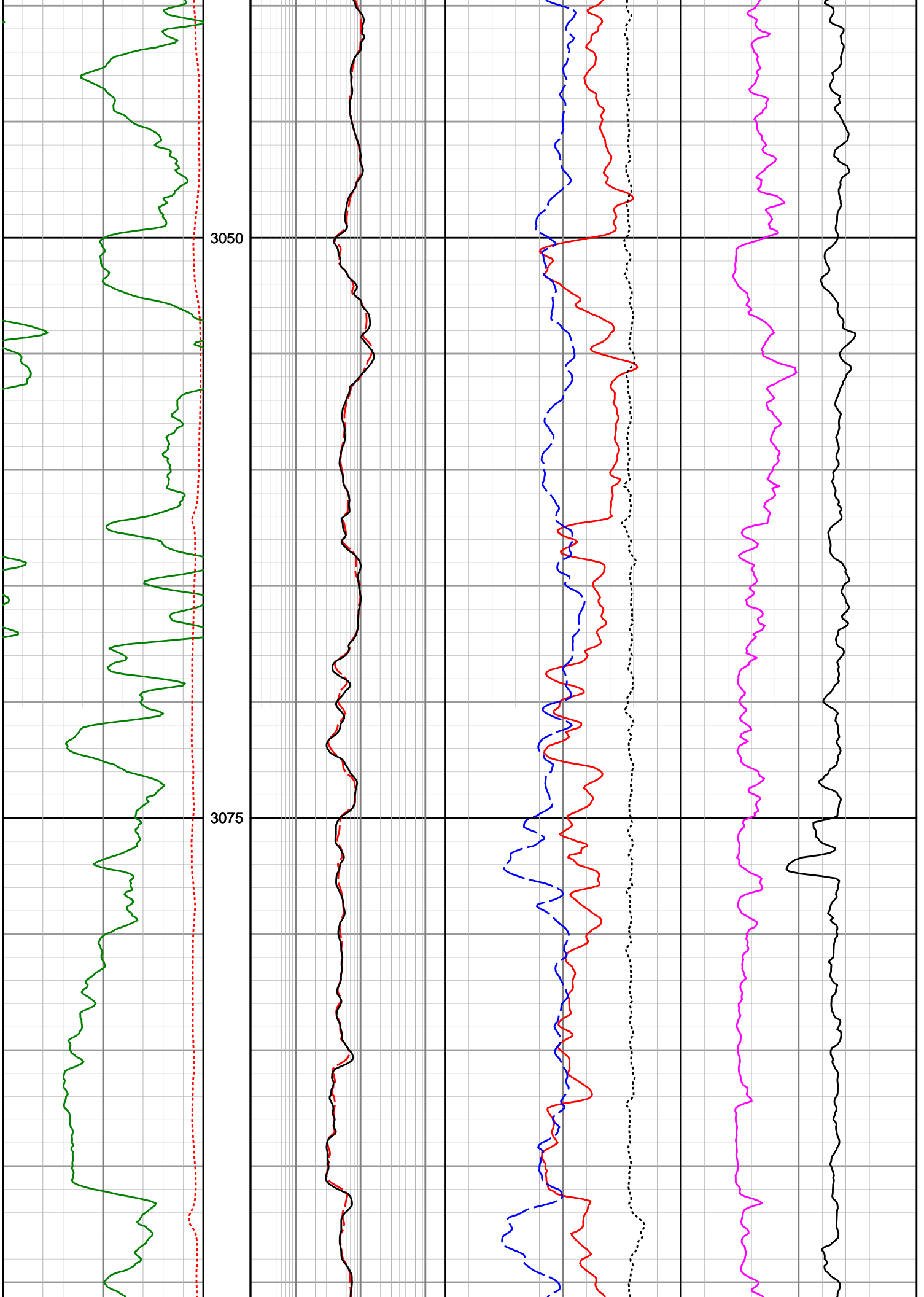


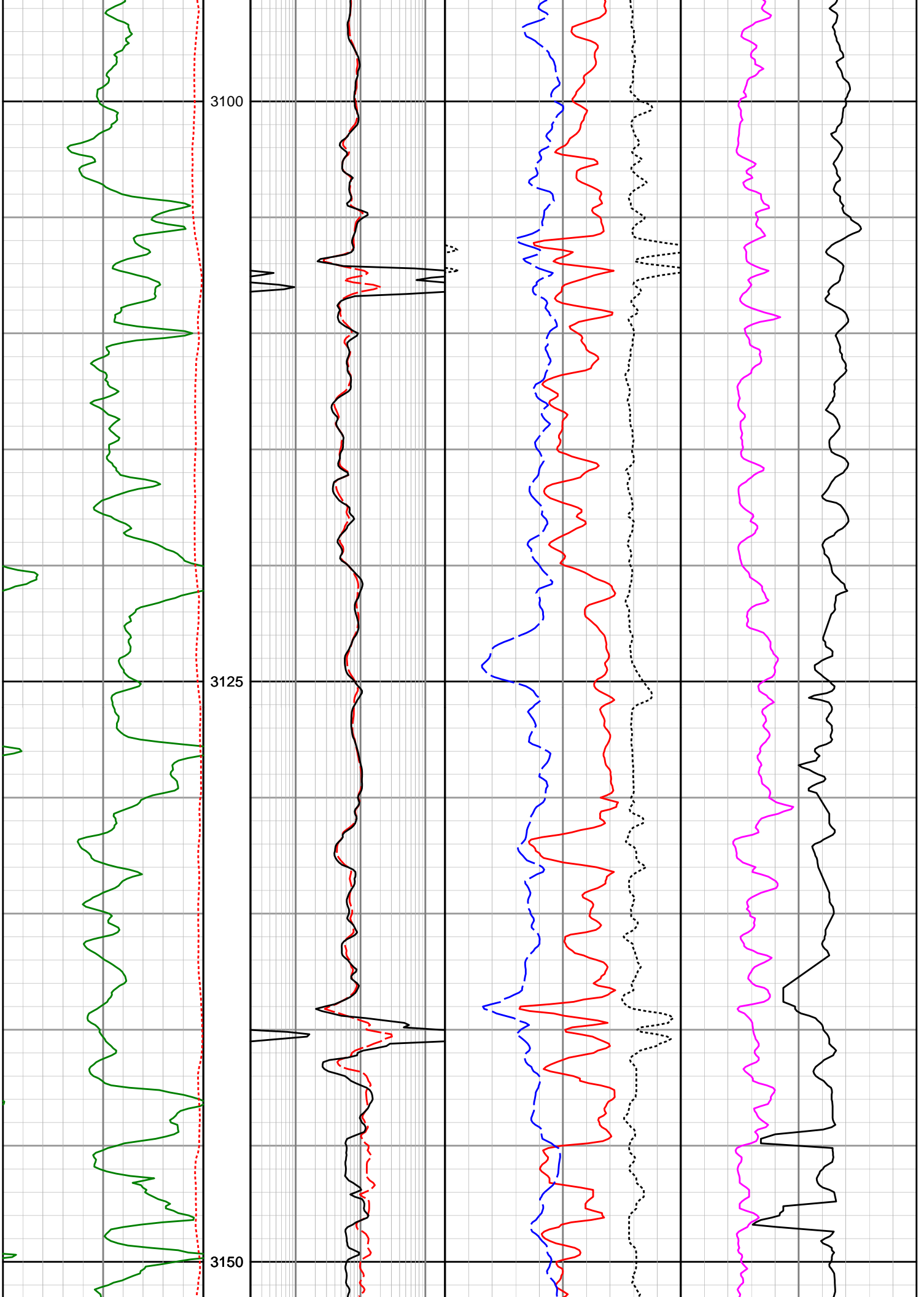


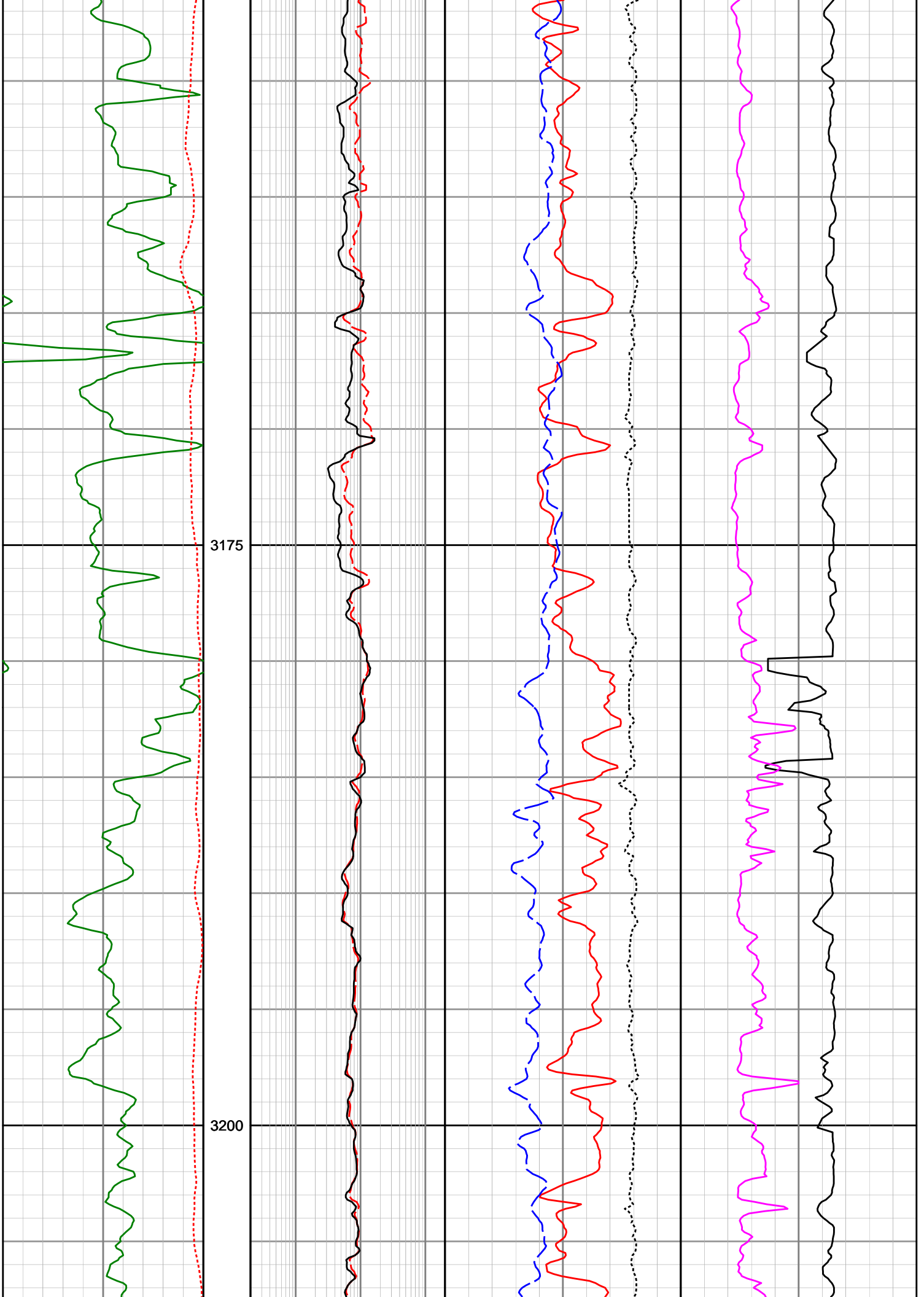


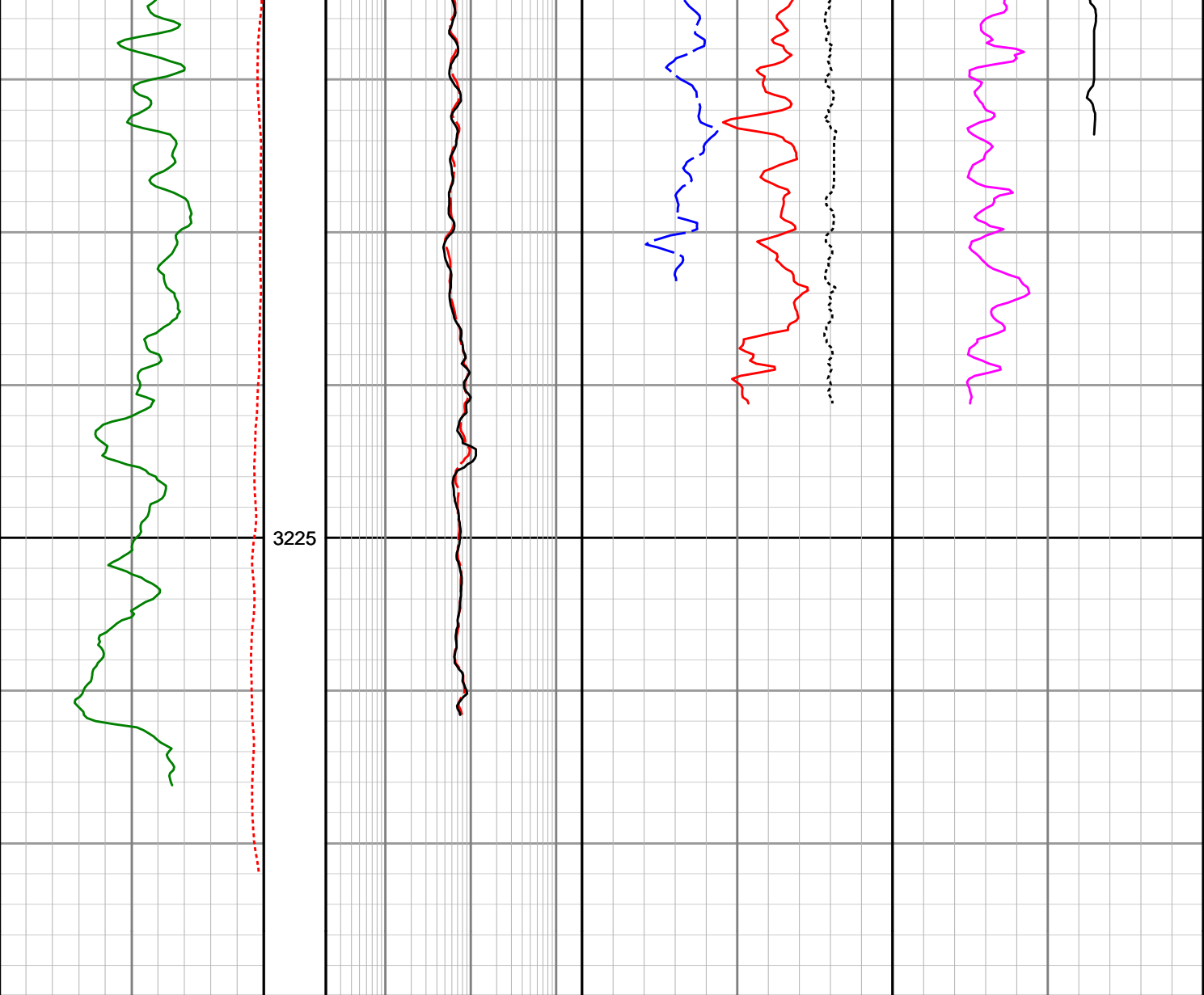












Gamma Ray (SGRC) api	Depth MD 1 : 200	Deep Phase Res (SEDP) ohmm	Neutron Porosity (TNPL) v/v	Photoelectric Effect (SNP2) b/e
0 200		0.2 200	0.45 -0.15	0 10
Rate of Penetration (SROP) m/hr		Shallow Phase Res (SESP) ohmm	Standoff Correction (SCO2) g/cc	Compressional Slowness (BAT_C) uspf
500 0		0.2 200	-0.75 0.25	140 40
		Density (SBD2) g/cc		
		1.95 2.95		