

Input DLIS Files						
DEFAULT	HRLA_TLD_MCFL_CNL_079LUP	FN:89	PRODUCER	19-Nov-2009 09:13	3229.9 M	2766.0 M
Output DLIS Files						
DEFAULT	HRLA_TLD_MCFL_CNL_083PUP	FN:97	PRODUCER	19-Nov-2009 09:36	3215.0 M	2740.9 M
RTBK	HRLA_TLD_MCFL_CNL_083PUP	FN:98	PRODUCER	19-Nov-2009 09:35	3215.0 M	2740.9 M

CMR DEPTH LOG REPORT

PARAMETER SUMMARY

Tool Type: CMR-Plus	Cart. Number: 186	Sonde Number: 163	
Kit Number: 28	DHC Version : 16.4	DSP Version : 13	SP Version : 10182006
Mode: Expert Depth Log – B Mode		LFST Freq(khz) : 2183	LFST Temp(degc) : 113.71
Log Direction: Up	Polarization Correction: Off	EPM: Yes	EPM T1/T2: Auto
Despiking: Off	High Res: Off	KBFV: Off	DMRP: Off
Echo Spacing(us):	(200 200)		
Polarization Times(sec) for:	T1=1s: (infinity 0.02)	T1=3s: (infinity 0.02)	T1=5s: (14.86 0.02)
Number of Echoes:	(5000 30)		
Repetition:	(1 10)	Duty Cycle (highest): 0.0288	
Regularization:	Auto		
T2 Min(msec): 0.5	T2 Max(msec): 5000	T2 Cutoff(msec): 33	T1/T2: 1.5
Number of Components: 30	Downhole Stacking: 3	Uphole Stacking: 1	First Echo Used: No
Multiple T2 Cutoffs(msec):	(0.5 1 3 10 33 100 300 1000 5000)		
Sample Int.(in): 7.5	Req Log Speed (f/h): 500		

PIP SUMMARY

Time Mark Every 60 S

Bins 7-8

Bin 6

Bin 5

Bin 4

Tuning Mode
(TUNING_MODE)

-1 (----] 3

Bin 3

(NO_UPDATE_COUNT)

0 (----]10

Bins 1-2

Noise Out of Tolerance

Tension (TENS)

10000 (LBF) 0

Caution Moderate Noise

Gamma Ray (GR_EDTC)

0 (GAPI) 200

Small Pore Porosity

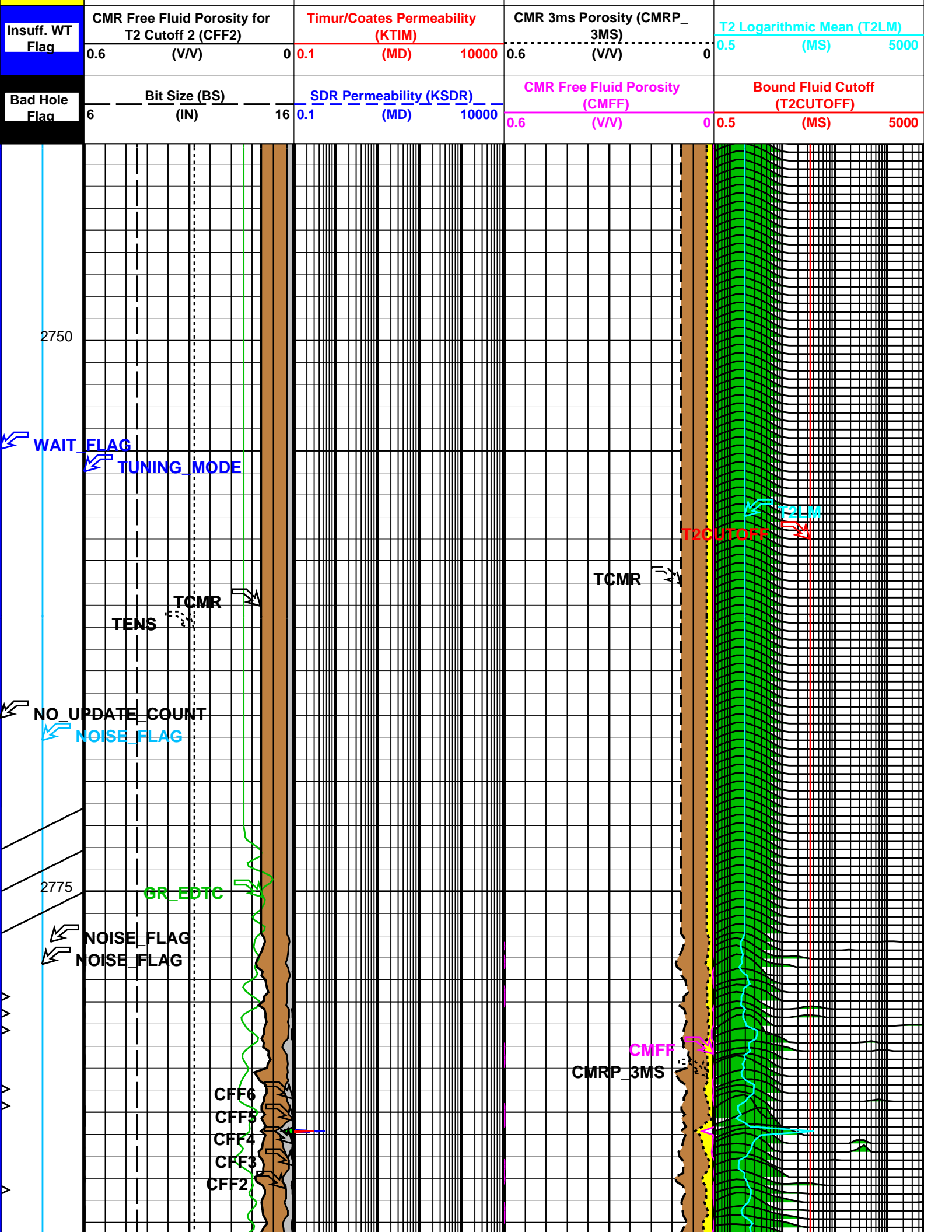
Capillary Bound Fluid Porosity

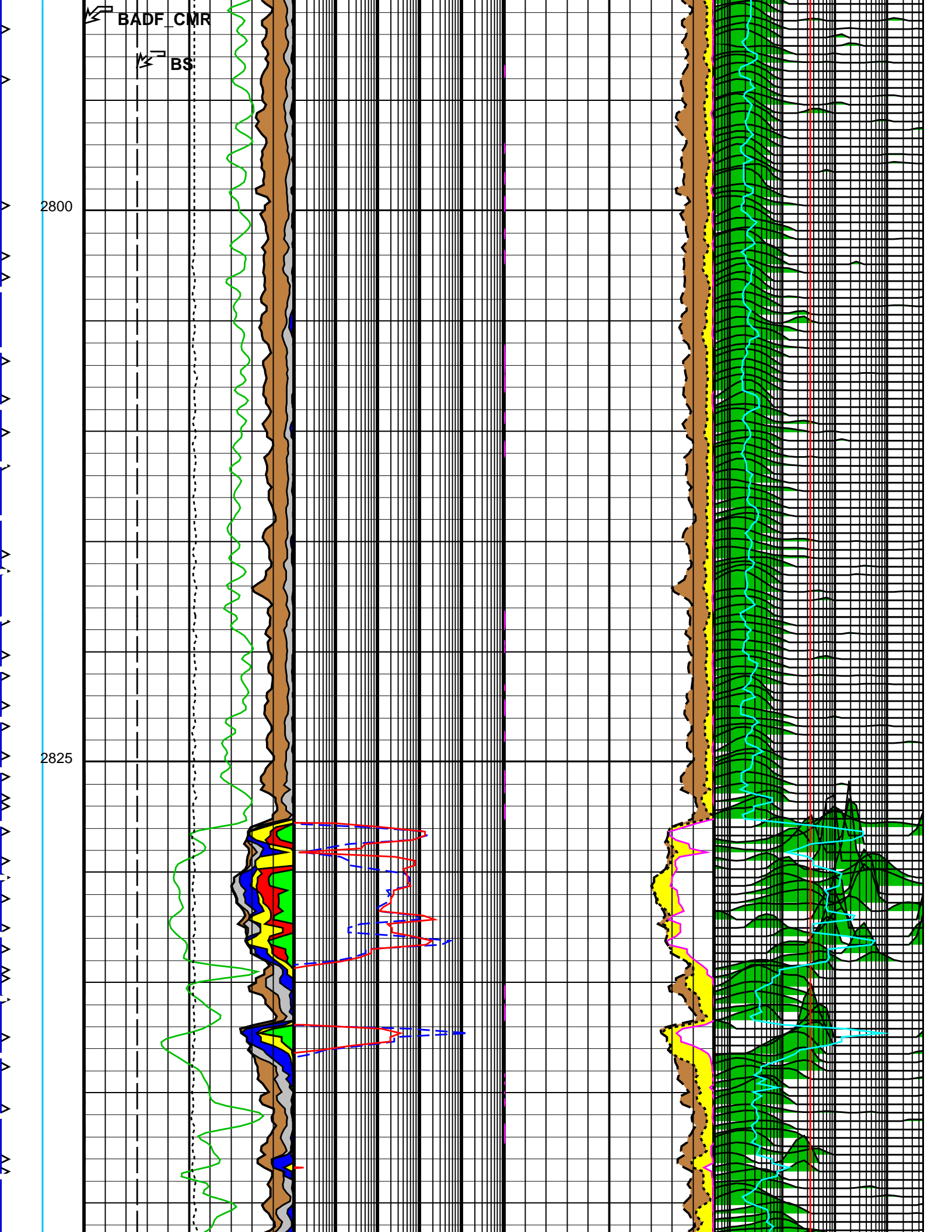
Total CMR Porosity (TCMR)

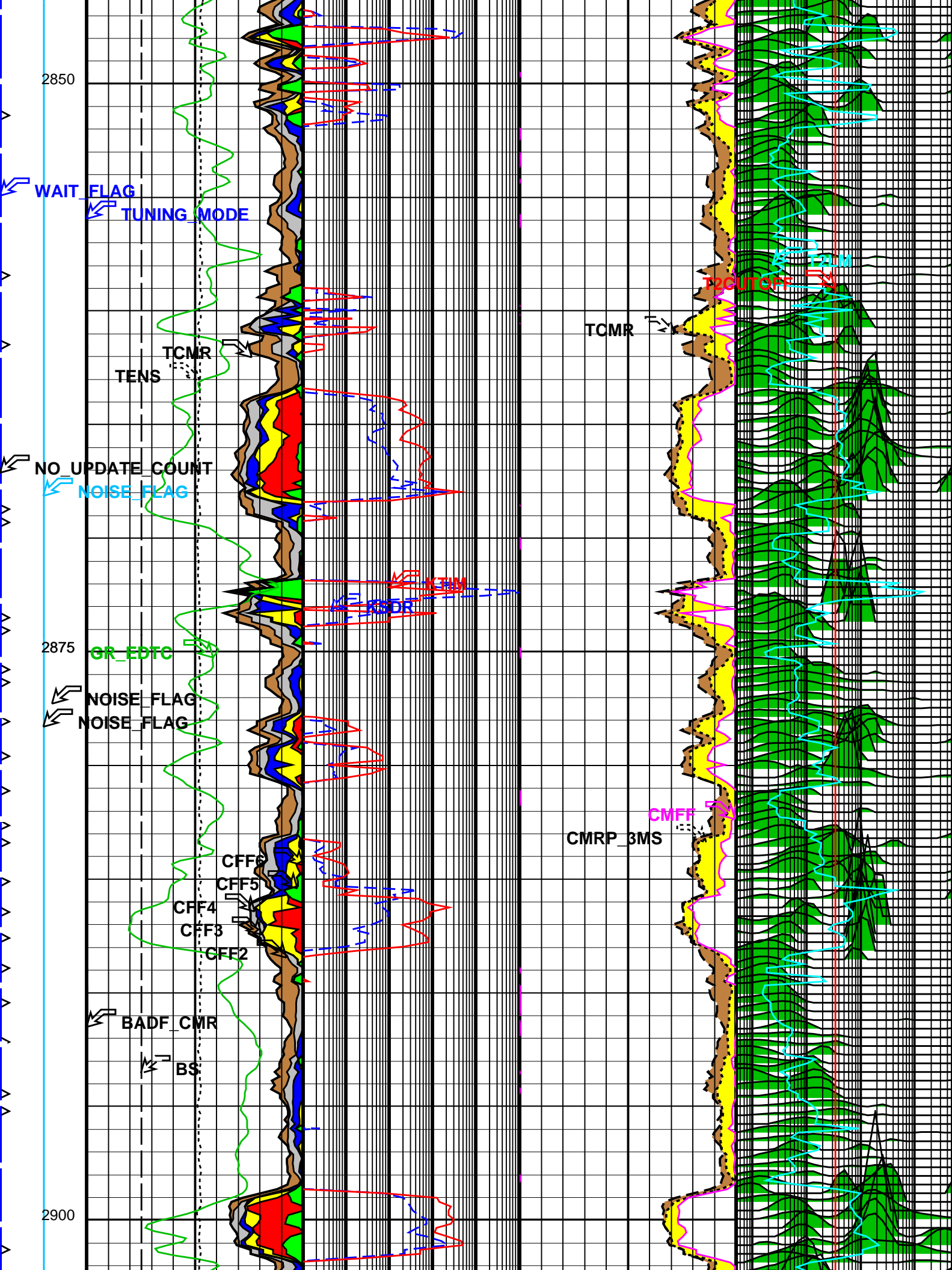
0.6 (V/V) 0

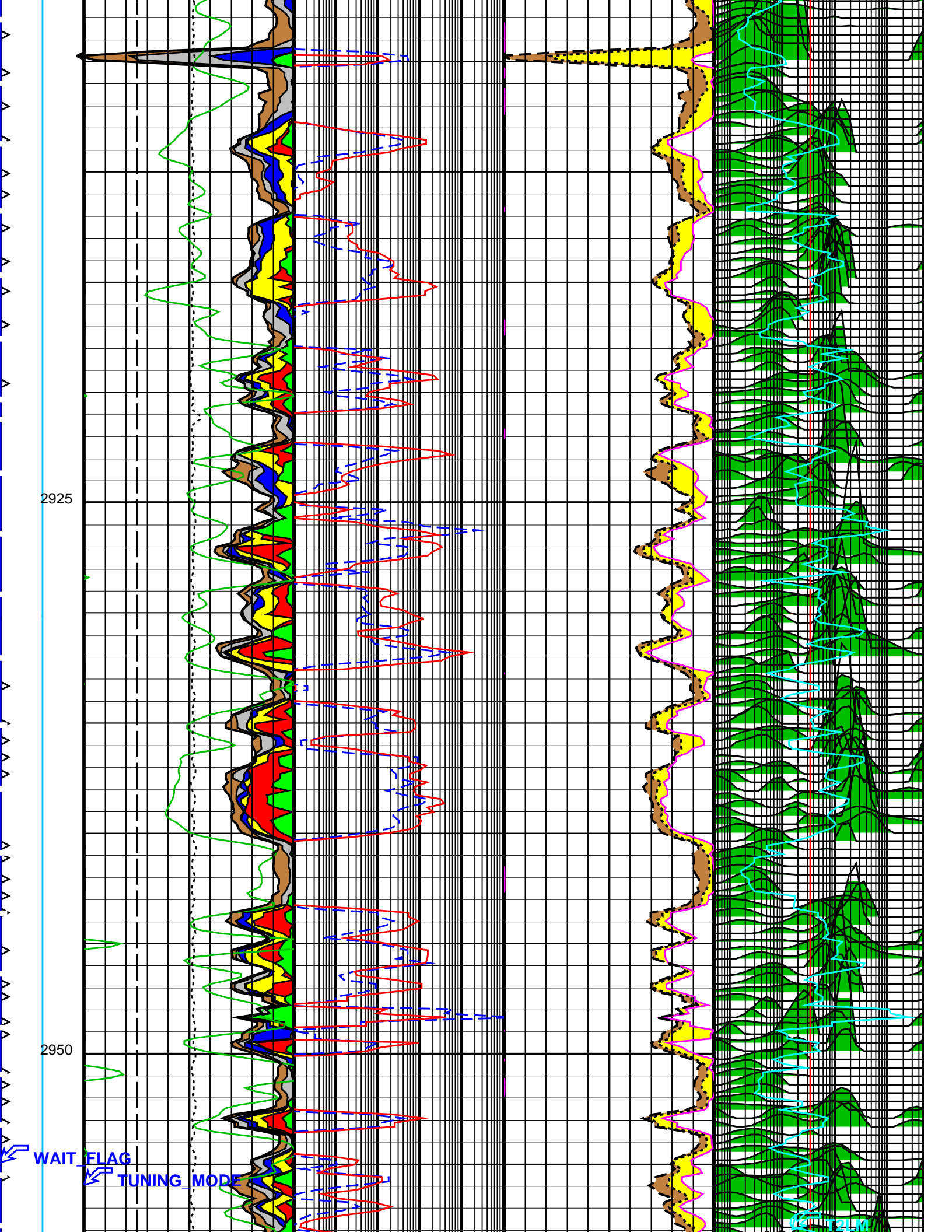
T2 Distribution (T2_DIST_MW)

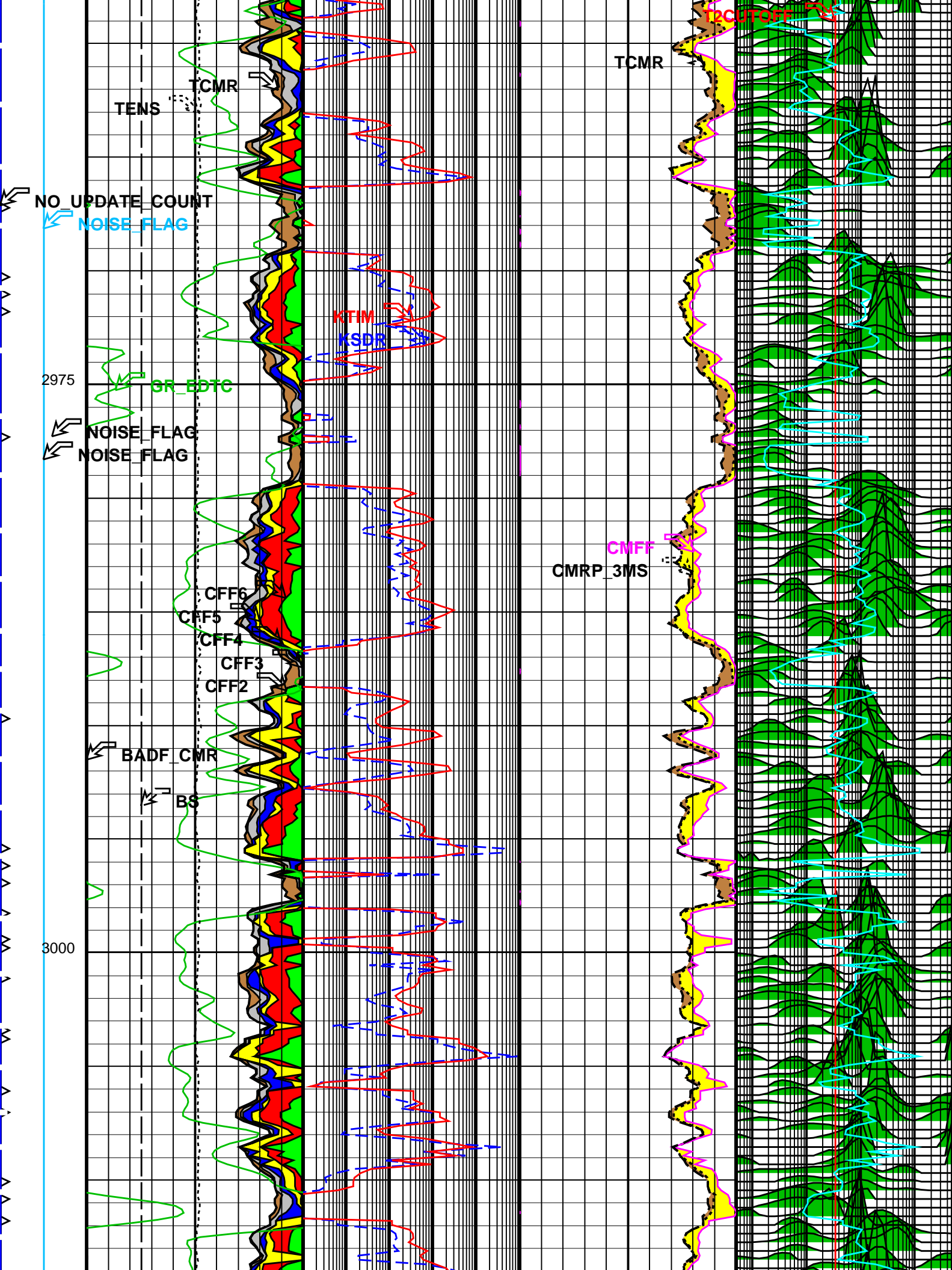
60 (US) 89

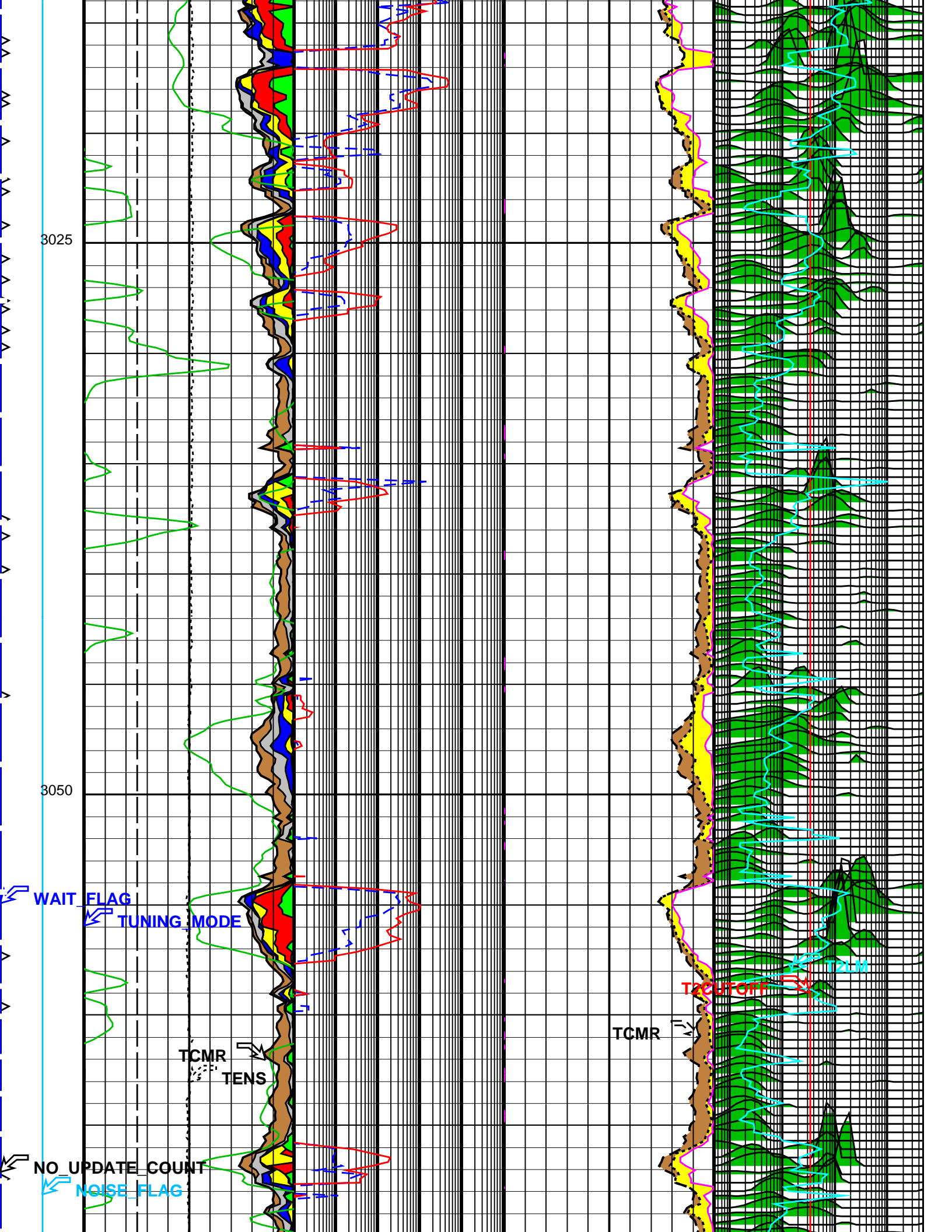












3075

GR_EDTC

NOISE_FLAG
NOISE_FLAG

KSDR

CFF6

CFF5

CFF4

CFF3

CFF2

BADF_CM

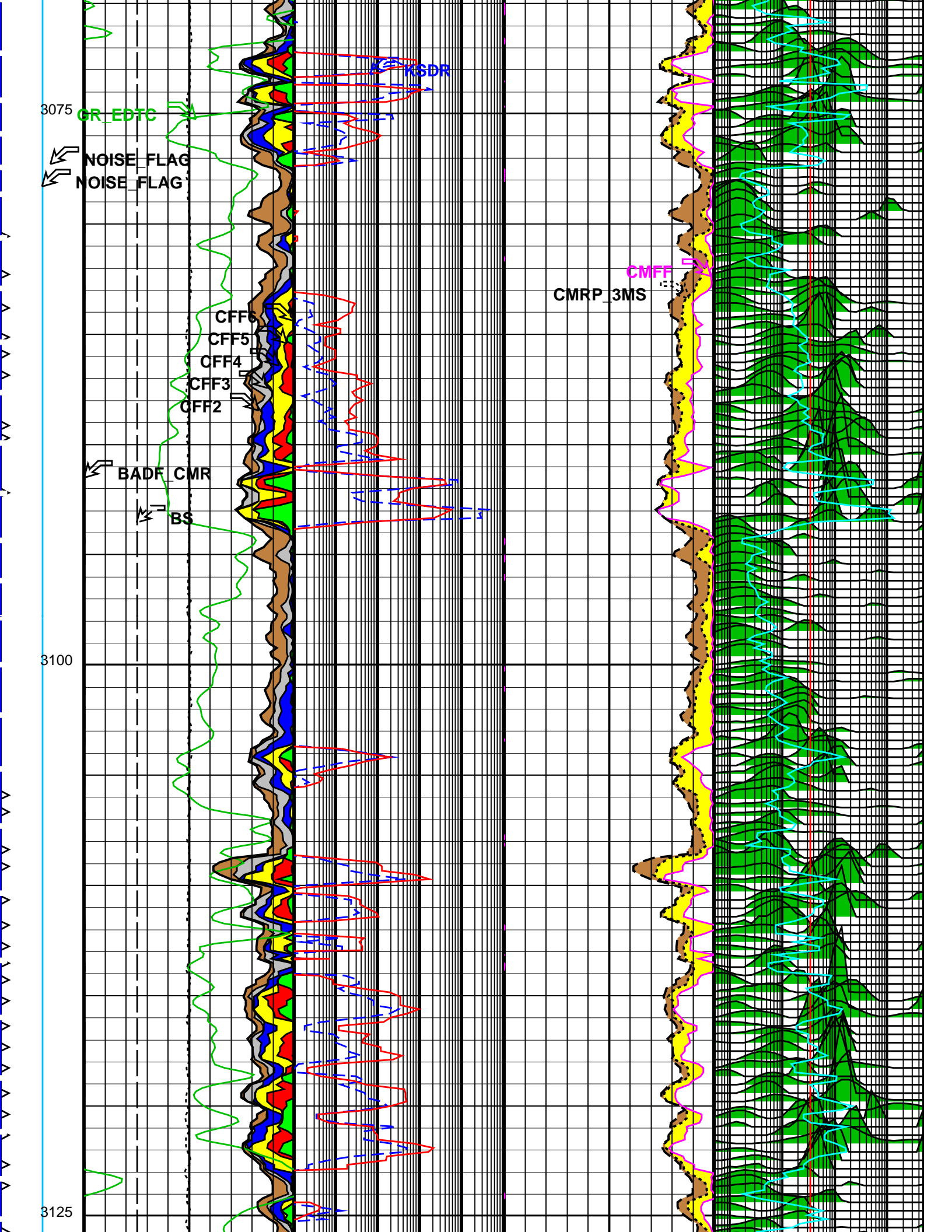
BS

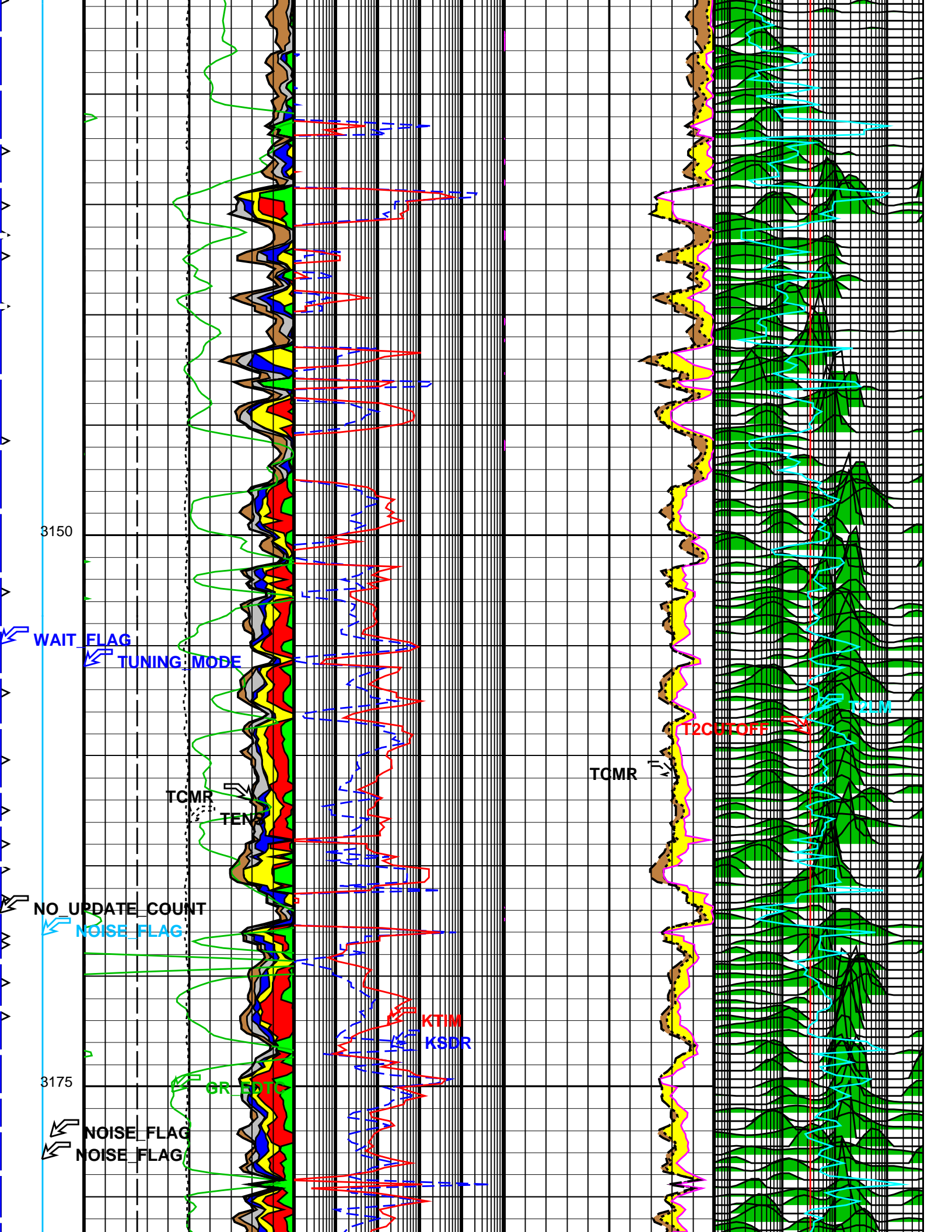
CMRP_3MS

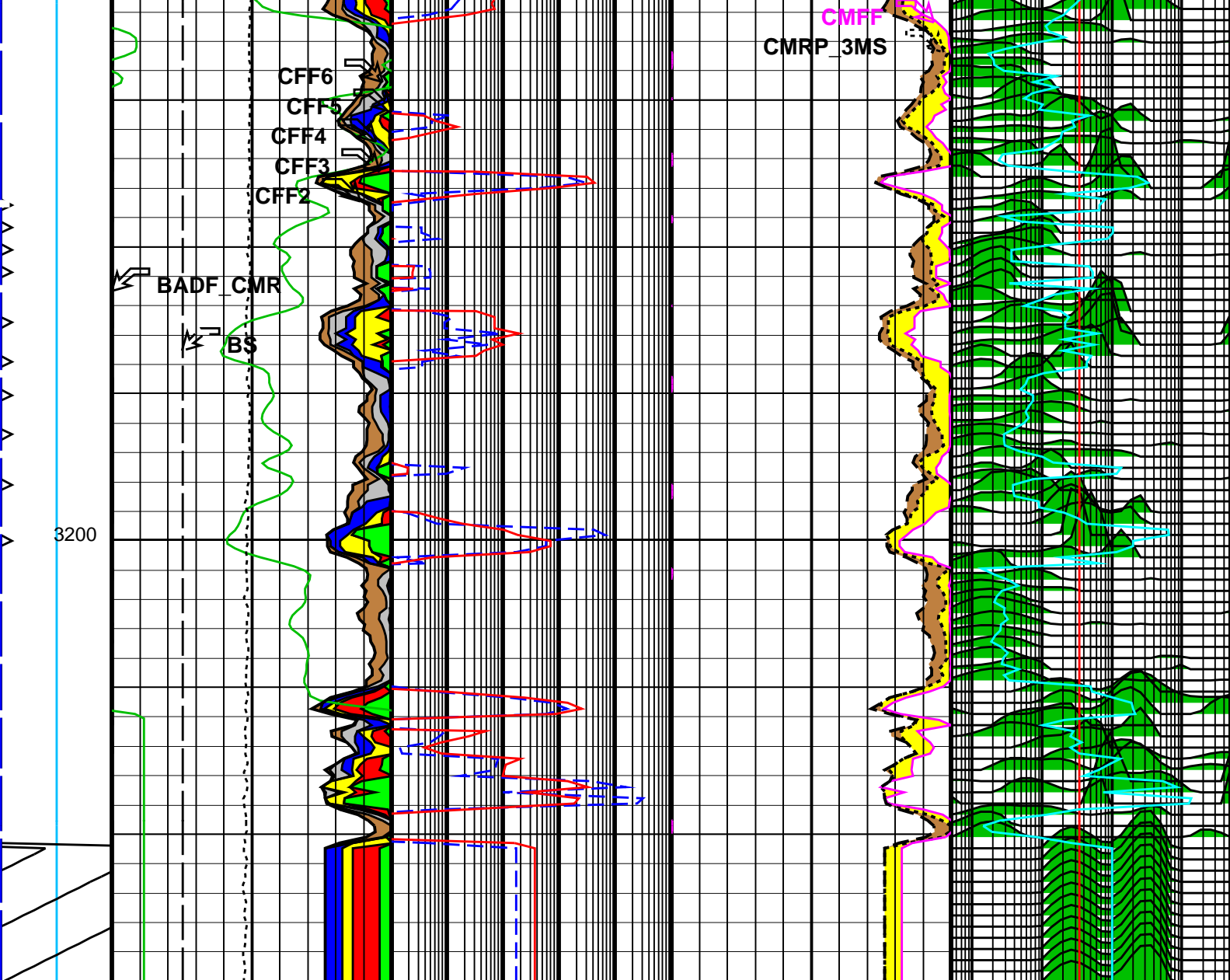
CMFF

3100

3125








Bad Hole Flag	Bit Size (BS) (IN)	SDR Permeability (KSDR) (MD)	CMRP Free Fluid Porosity (CMFF) (V/V)	Bound Fluid Cutoff (T2CUTOFF) (MS)
	6 16	0.1 10000	0.6 0	0.5 5000
Insuff. WT Flag	CMR Free Fluid Porosity for T2 Cutoff 2 (CFF2) (V/V)	Timur/Coates Permeability (KTIM) (MD)	CMR 3ms Porosity (CMRP_3MS) (V/V)	T2 Logarithmic Mean (T2LM) (MS)
	0.6 0	0.1 10000	0.6 0	0.5 5000
Caution Moderate Noise	Gamma Ray (GR_EDTC) (GAPI)		Total CMR Porosity (TCMR) (V/V)	T2 Distribution (T2_DIST_MW) (US)
	0 200		0.6 0	60 89
Noise Out of Tolerance	Tension (TENS) (LBF)		Capillary Bound Fluid Porosity	
	10000 0			
(NO_UPDATE_COUNT)	Bins 1-2		Small Pore Porosity	
	0 (-) 10			
Tuning Mode (TUNING_MODE)	Bin 3			
	-1 (-) 3			
	Bin 4			

	Bin 5
	Bin 6
	Bins 7–8

PIP SUMMARY
 Time Mark Every 60 S

Parameters		
DLIS Name	Description	Value
System and Miscellaneous		
BS	Bit Size	8.500 IN
DO	Depth Offset for Playback	4.9 M
DORL	Depth Offset for Repeat Analysis	0.0 M
PP	Playback Processing	NORMAL

Format: CMRT_BIN_POR_DEPTH_LOG	Vertical Scale: 1:200	Graphics File Created: 19–Nov–2009 09:36
--------------------------------	-----------------------	--

OP System Version: 17C0–154			
SPA–A	17C0–154	HRLT–B	17C0–154
HILTH–FTB	17C0–154	HNGC–B	17C0–154
HNGS–BA	SPC–3867–NUCL	CMRT–B	SPC–3874–CMR
EDTC–B	SKK–3882–EDTCB		

Input DLIS Files						
DEFAULT	HRLA_TLD_MCFL_CNL_079LUP	FN:89	PRODUCER	19–Nov–2009 09:13	3229.9 M	2766.0 M
Output DLIS Files						
DEFAULT	HRLA_TLD_MCFL_CNL_083PUP	FN:97	PRODUCER	19–Nov–2009 09:36		
RTBK	HRLA_TLD_MCFL_CNL_083PUP	FN:98	PRODUCER	19–Nov–2009 09:35		