

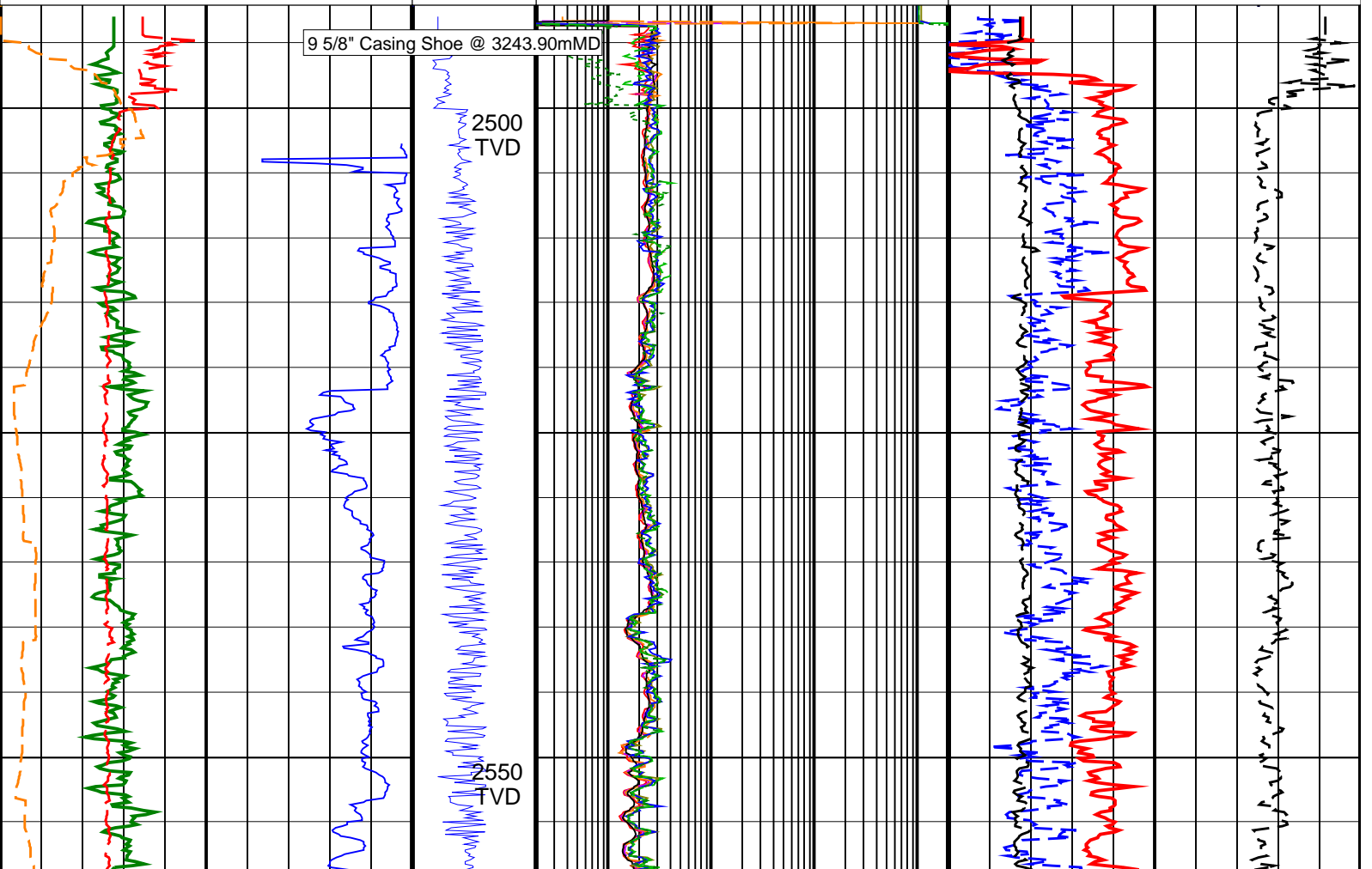
# Elver-1\_EcoScope\_GeoVISION Service RM 500TVD

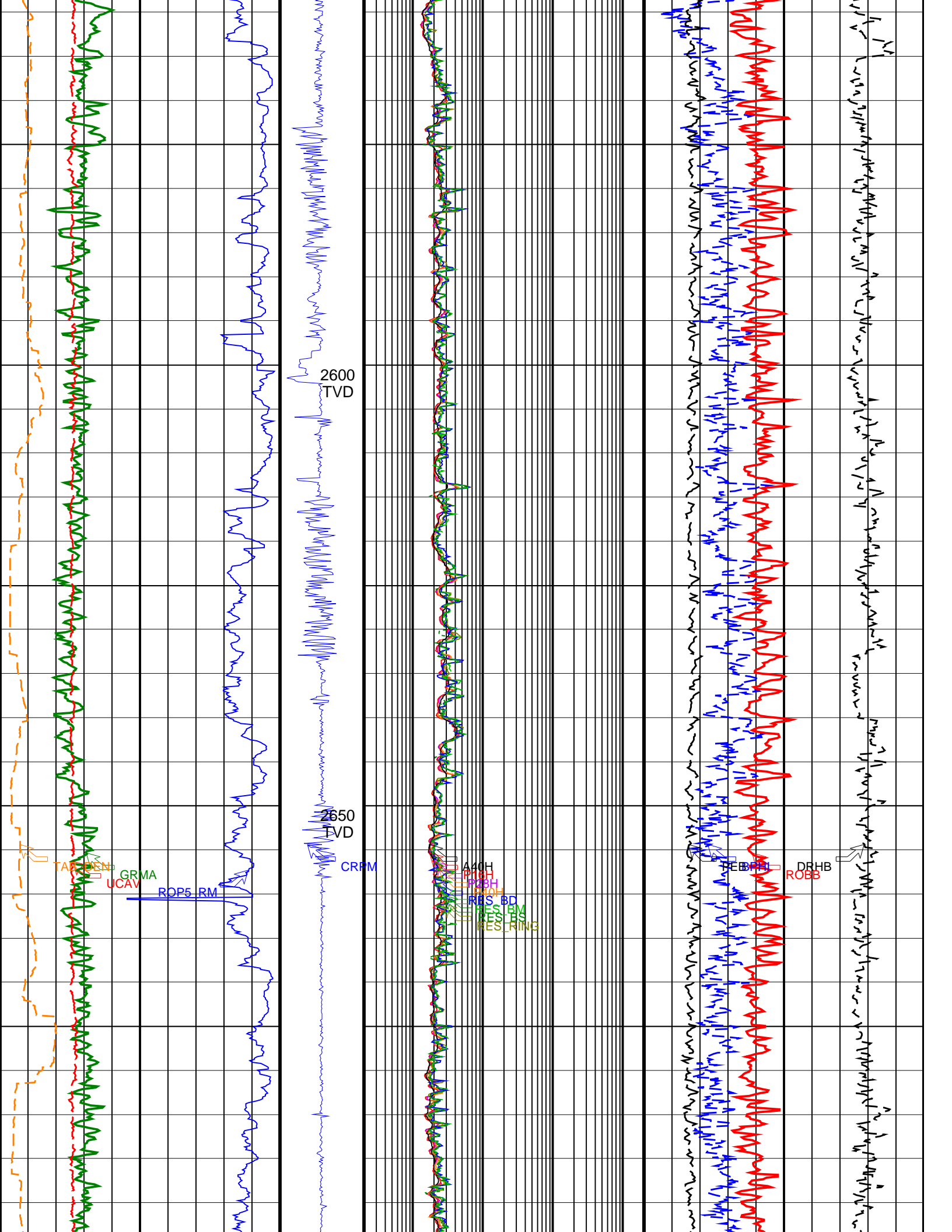
Format: Elver-1\_EcoScope\_GVR\_500TVD

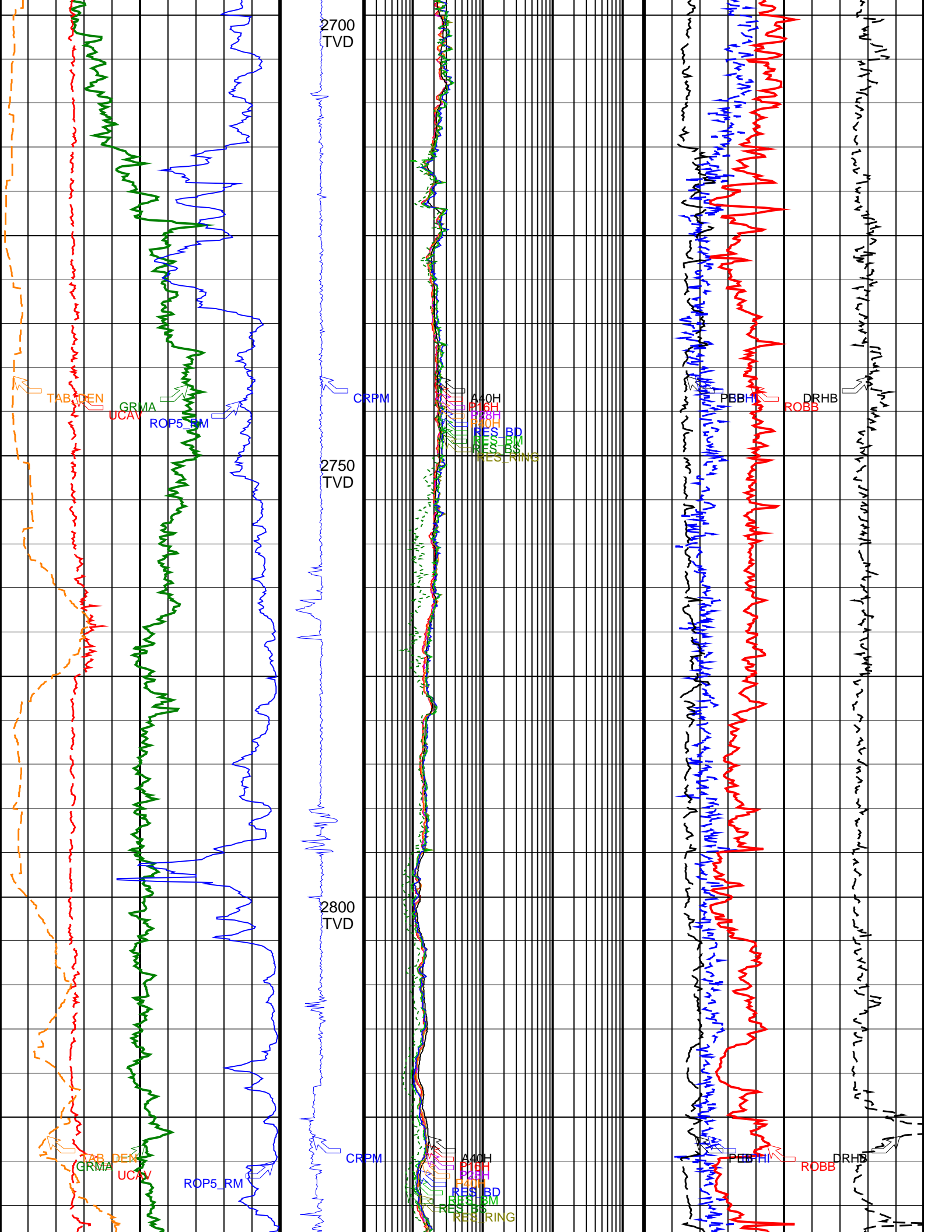
Vertical Scale: 1:500

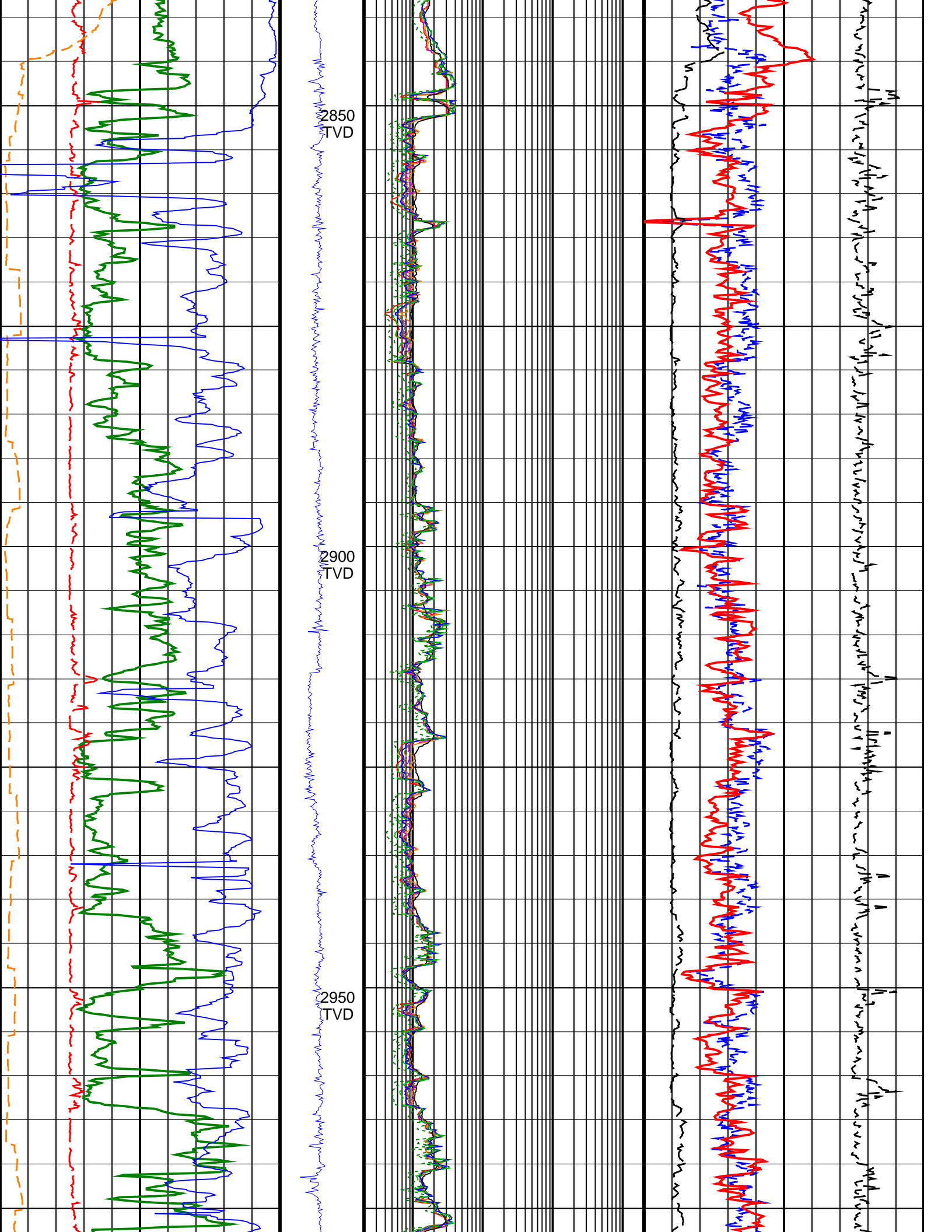
Graphics File Created: 13-Jan-2009 03:33

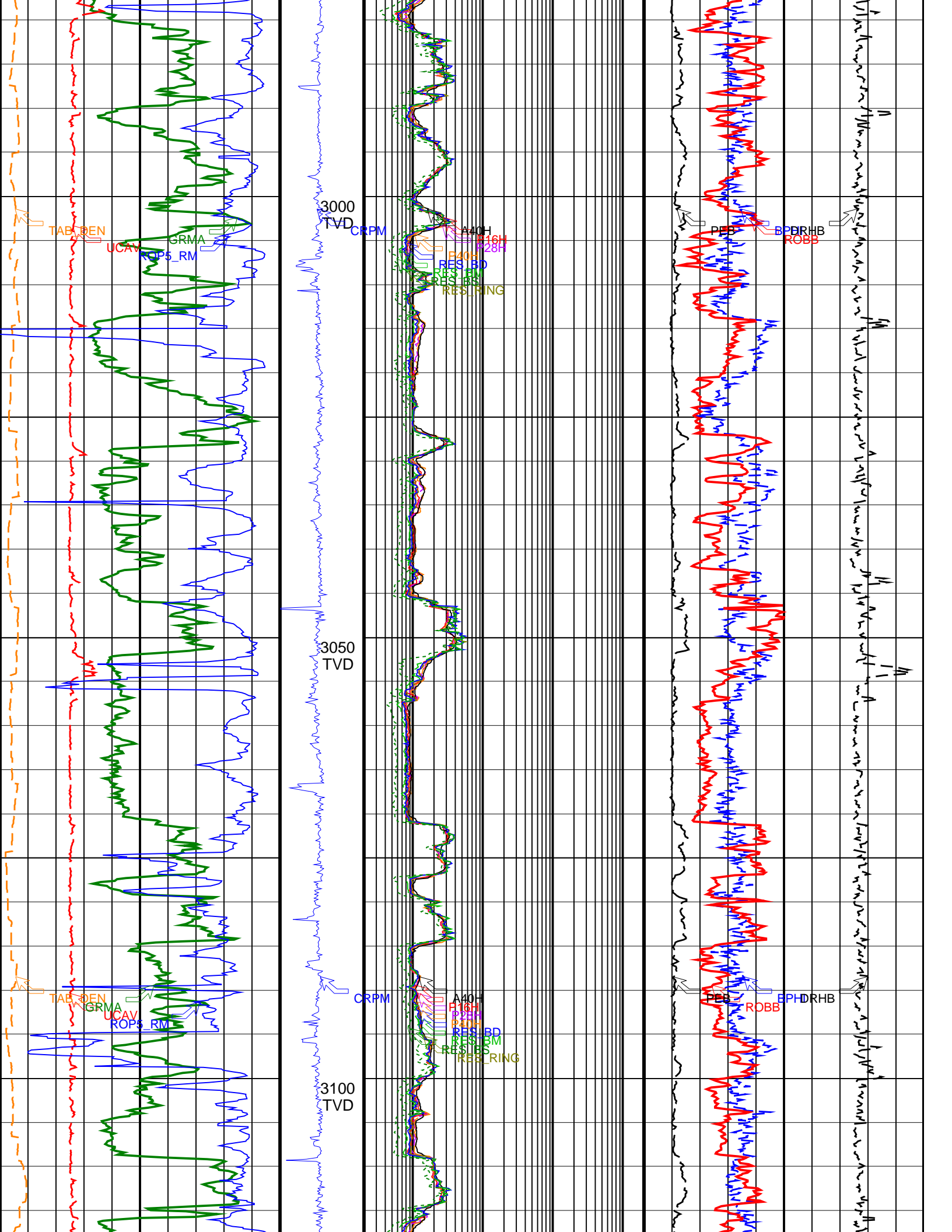
	<u>Shallow Button Resistivity (RES_BS)</u> 0.2 (OHMM) 2000	
	<u>Medium Button Resistivity (RES_BM)</u> 0.2 (OHMM) 2000	
	<u>Deep Button Resistivity (RES_BD)</u> 0.2 (OHMM) 2000	
	<u>Ring Resistivity (RES_RING)</u> 0.2 (OHMM) 2000	
<u>Time after BIT (between drilling and measurement) (TAB_DEN)</u> 0 (HR) 10	ARC Attenuation Resistivity 40 inch at 2 MHz (A40H) 0.2 (OHMM) 2000	
<u>Rate of Penetration, Averaged over Last 5ft (ROP5_RM)</u> 200 (M/HR) 0	ARC Phase Shift Resistivity 40 inch at 2 MHz (P40H) 0.2 (OHMM) 2000	Photoelectric Factor, Bottom (PEB) 0 (----) 10
<u>Gamma Ray, Average (GRMA)</u> 0 (GAPI) 200	ARC Phase Shift Resistivity 28 inch at 2 MHz (P28H) 0.2 (OHMM) 2000	Bulk Density Correction, Bottom (DRHB) -0.25 (G/C3) 0.25
<u>Ultrasonic Caliper Average (UCAV)</u> 6 (IN) 16	ARC Phase Shift Resistivity 16 inch at 2 MHz (P16H) 0.2 (OHMM) 2000	Bulk Density, Bottom (ROBB) 1.95 (G/C3) 2.95
Collar Rotational Speed (CRPM) (RPM) 0 400	Best Thermal Neutron Porosity, Average (BPHI) 0.45 (V/V) -0.15	

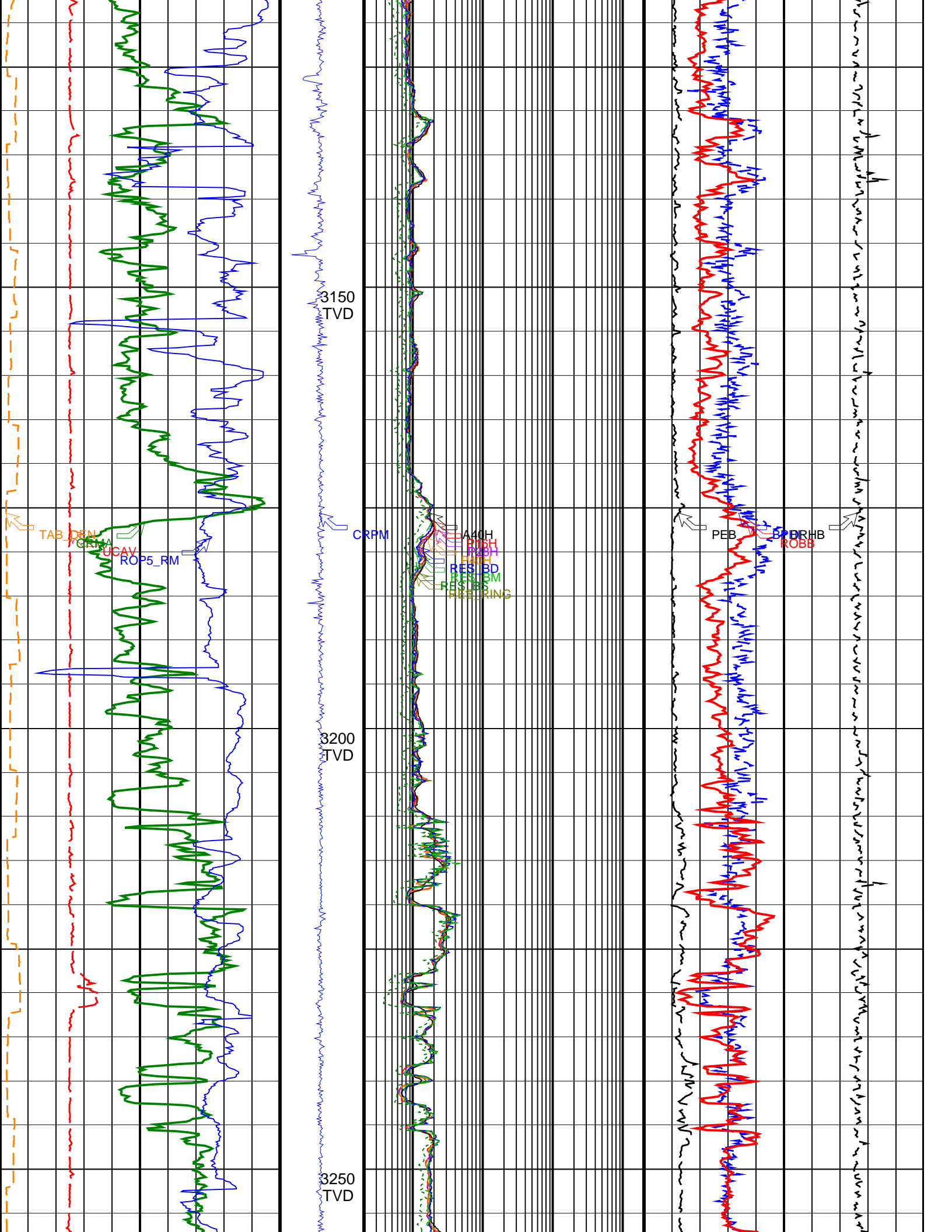




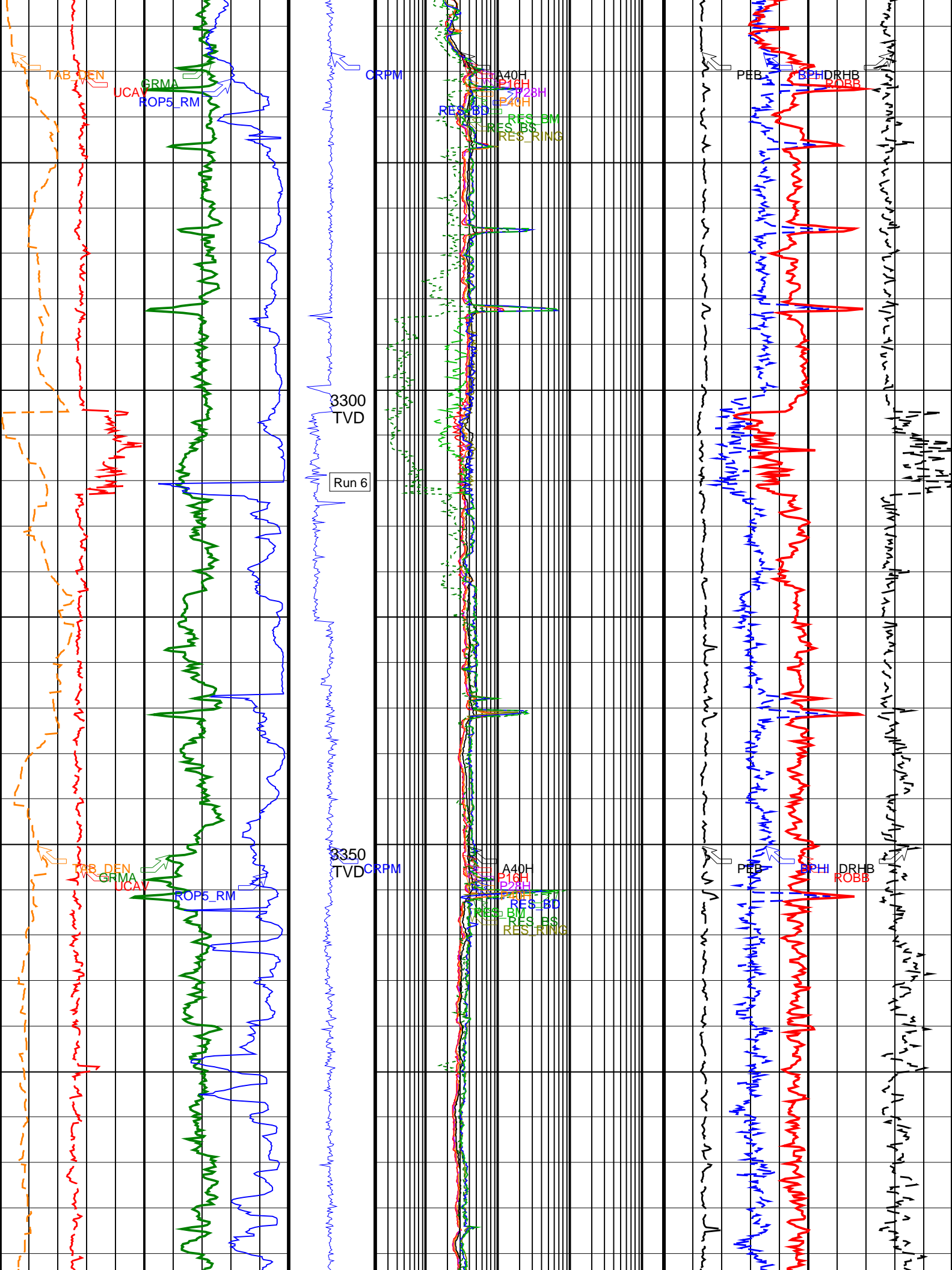


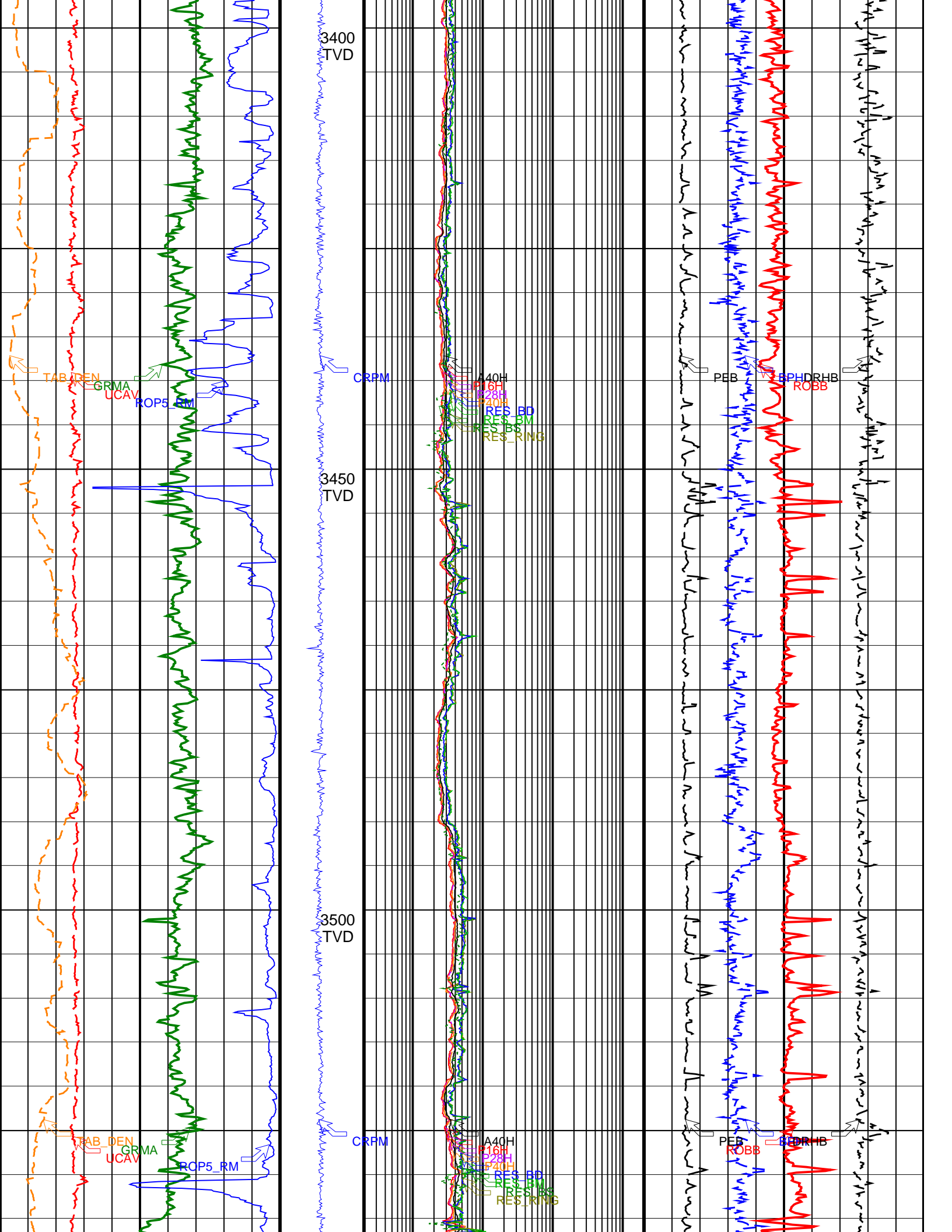




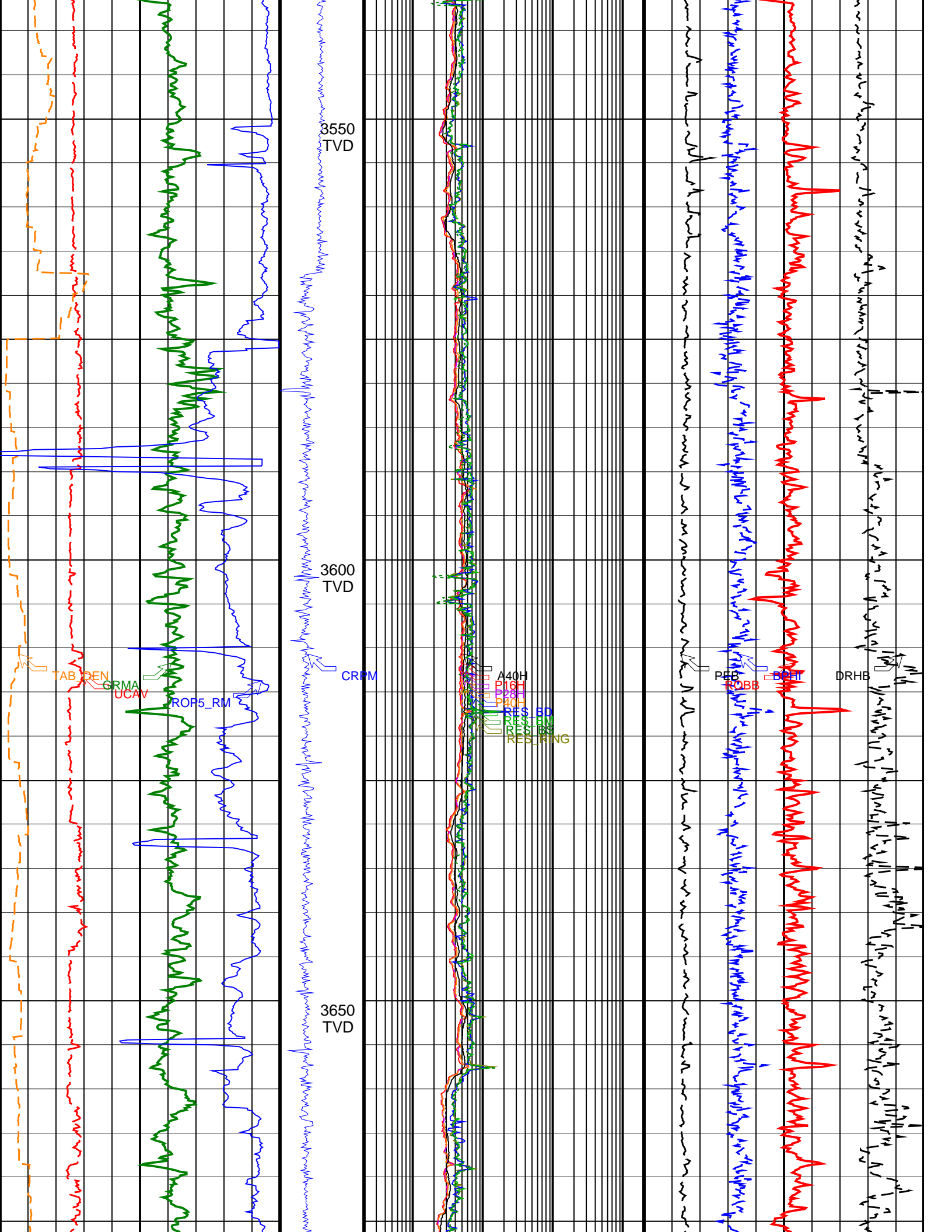


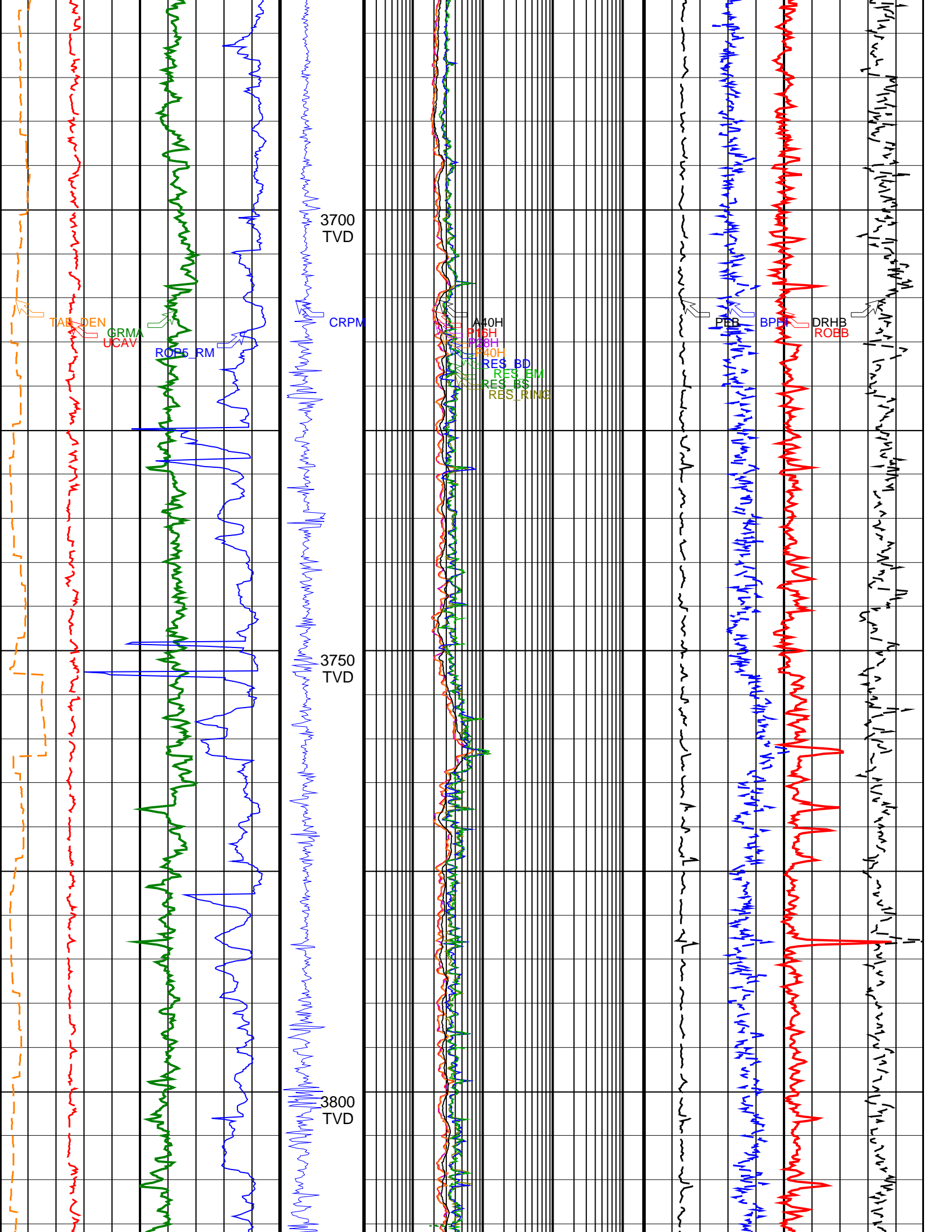


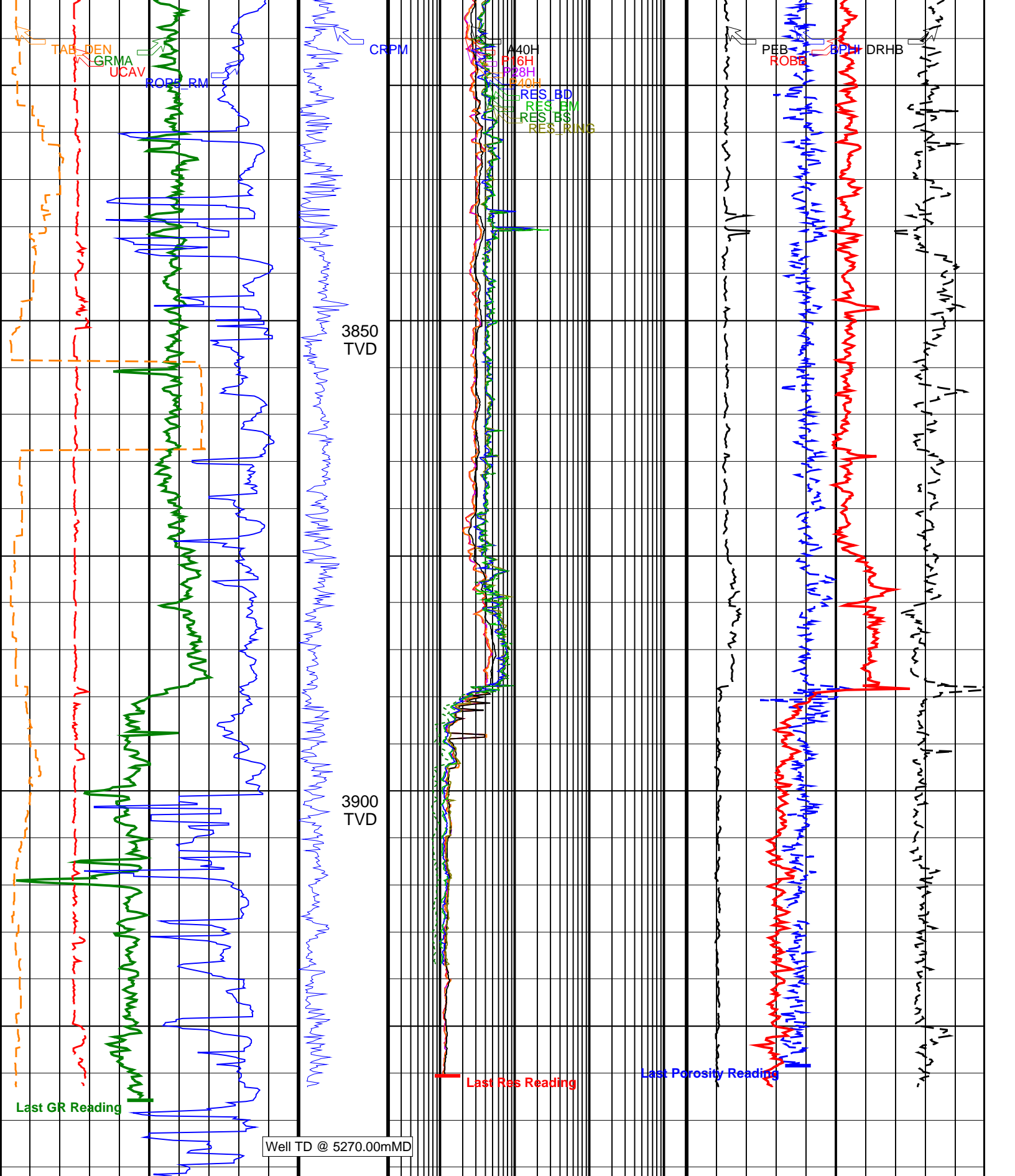












<p><b>Ultrasonic Caliper Average (UCAV)</b> 6 (IN) 16</p>	<p><b>Collar Rotational Speed (CRPM) (RPM)</b> 0 400</p>	<p><b>ARC Phase Shift Resistivity 16 inch at 2 MHz (P16H)</b> 0.2 (OHMM) 2000</p>	<p><b>Best Thermal Neutron Porosity, Average (BPHI)</b> 0.45 (V/V) -0.15</p>
<p><b>Ultrasonic Caliper Average (UCAV)</b></p>	<p><b>Collar Rotational Speed (CRPM) (RPM)</b></p>	<p><b>ARC Phase Shift Resistivity 28 inch at 2 MHz (P28H)</b></p>	<p><b>Best Thermal Neutron Porosity, Average (BPHI)</b></p>

Gamma Ray, Average (GRMA)	0	200
(GAPI)		
Rate of Penetration, Averaged over Last 5ft (ROP5_RM)	200	0
(M/HR)		
Time after BIT (between drilling and measurement) (TAB_DEN)	0	10
(HR)		

ARC Phase Shift Resistivity 40 inch at 2 MHz (P28H)	0.2	2000
(OHMM)		
ARC Phase Shift Resistivity 40 inch at 2 MHz (P40H)	0.2	2000
(OHMM)		
ARC Attenuation Resistivity 40 inch at 2 MHz (A40H)	0.2	2000
(OHMM)		
Ring Resistivity (RES_RING)	0.2	2000
(OHMM)		
Deep Button Resistivity (RES_BD)	0.2	2000
(OHMM)		
Medium Button Resistivity (RES_BM)	0.2	2000
(OHMM)		
Shallow Button Resistivity (RES_BS)	0.2	2000
(OHMM)		

Bulk Density, Bottom (ROBB)		1.95	2.95
(G/C3)			
Photoelectric Factor, Bottom (PEB)	0	10	
(-----)			
Bulk Density Correction, Bottom (DRHB)	-0.25	0.25	
(G/C3)			

--	--	--	--