

Elver-1 EcoScope Service RT 200MD

Format: ECO-SON-GVR_200MD_RT

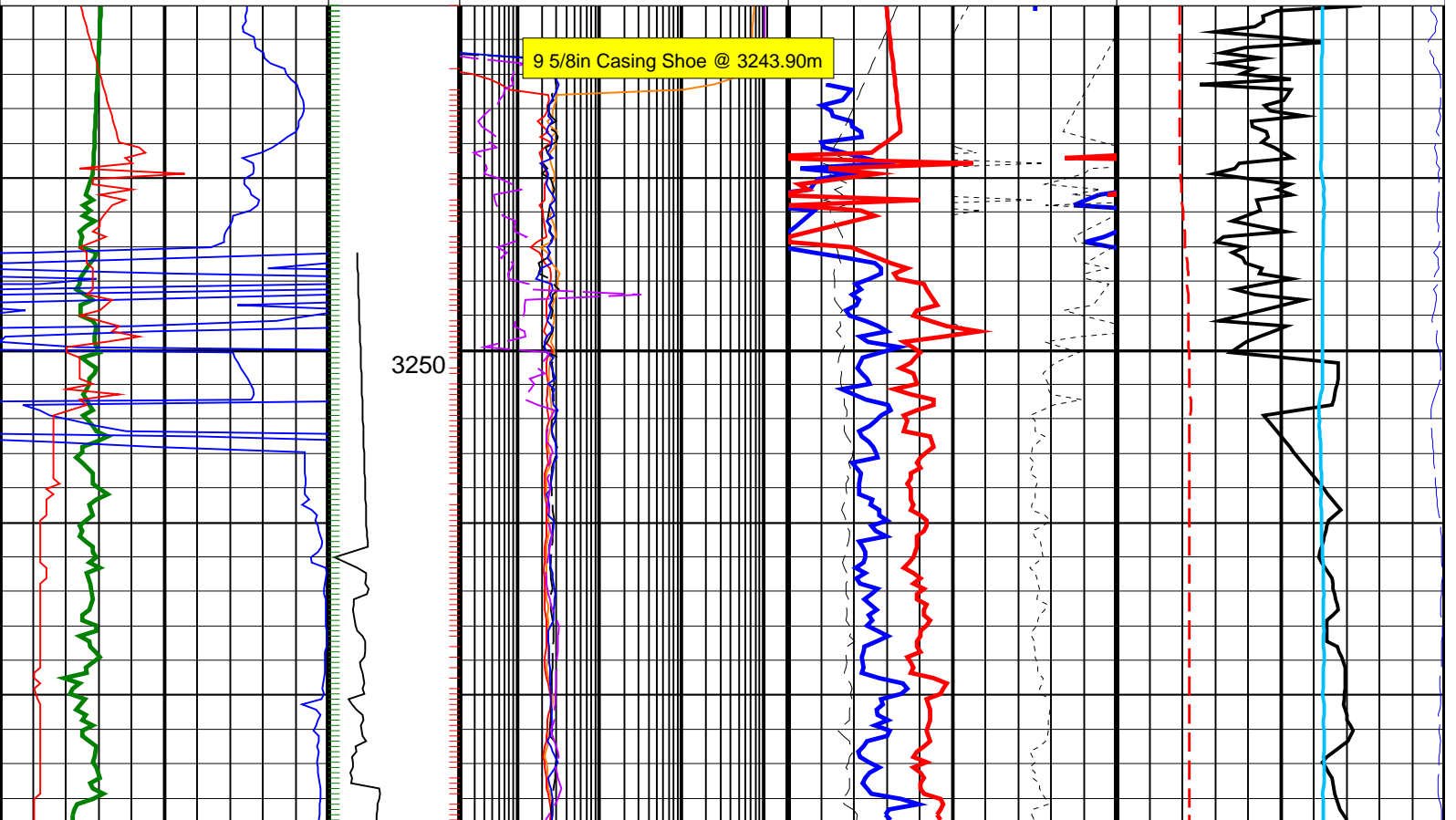
Vertical Scale: 1:200

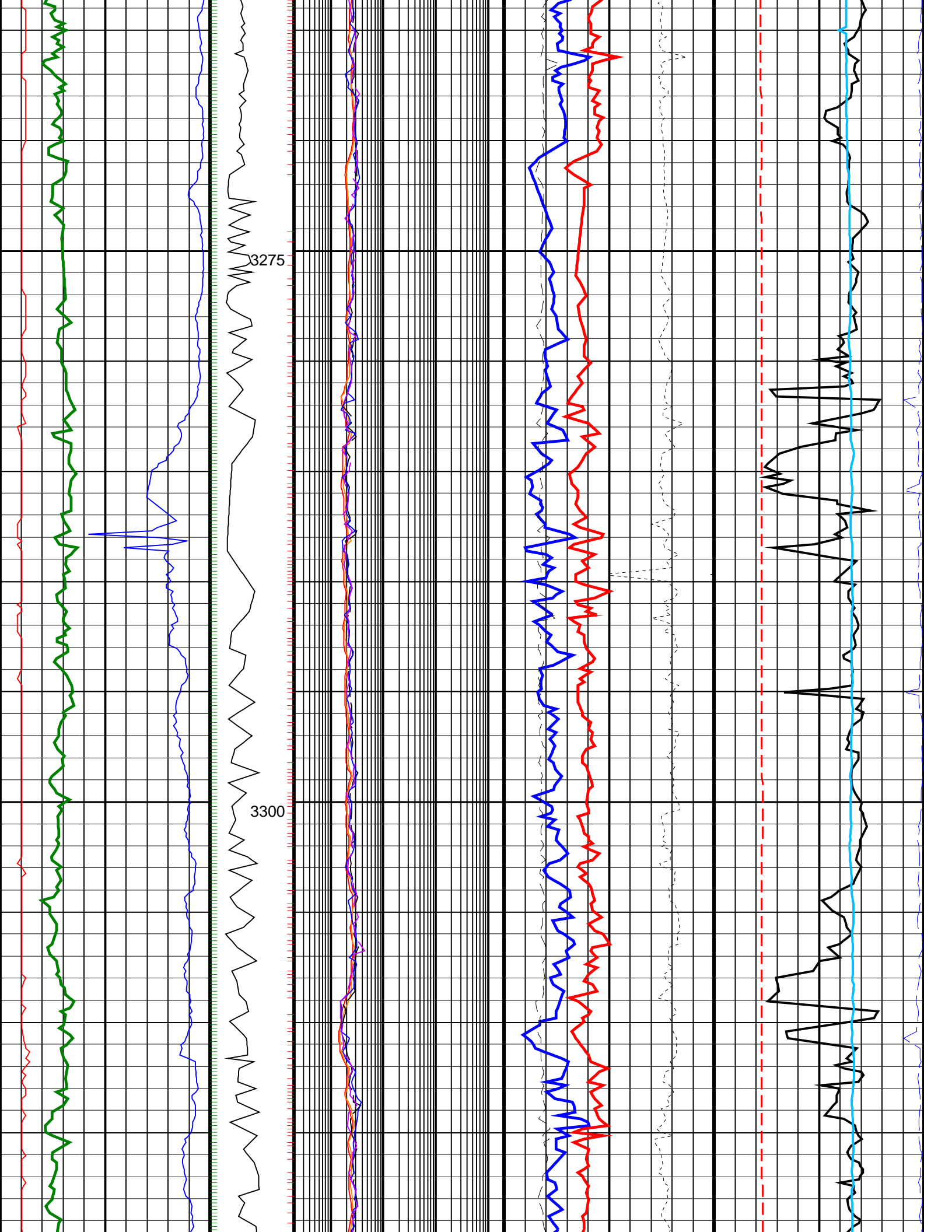
Graphics File Created: 06-Jan-2009 08:36

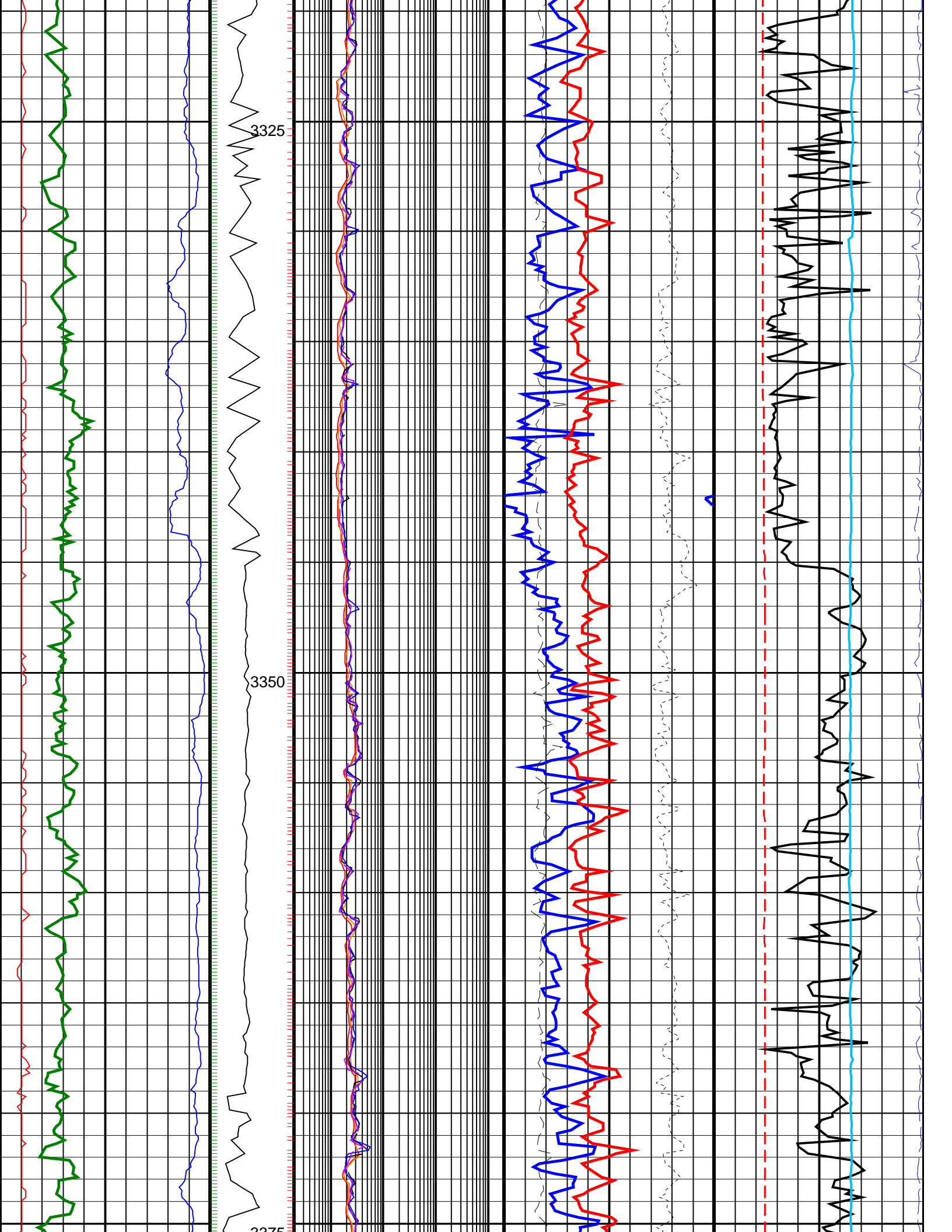
PIP SUMMARY

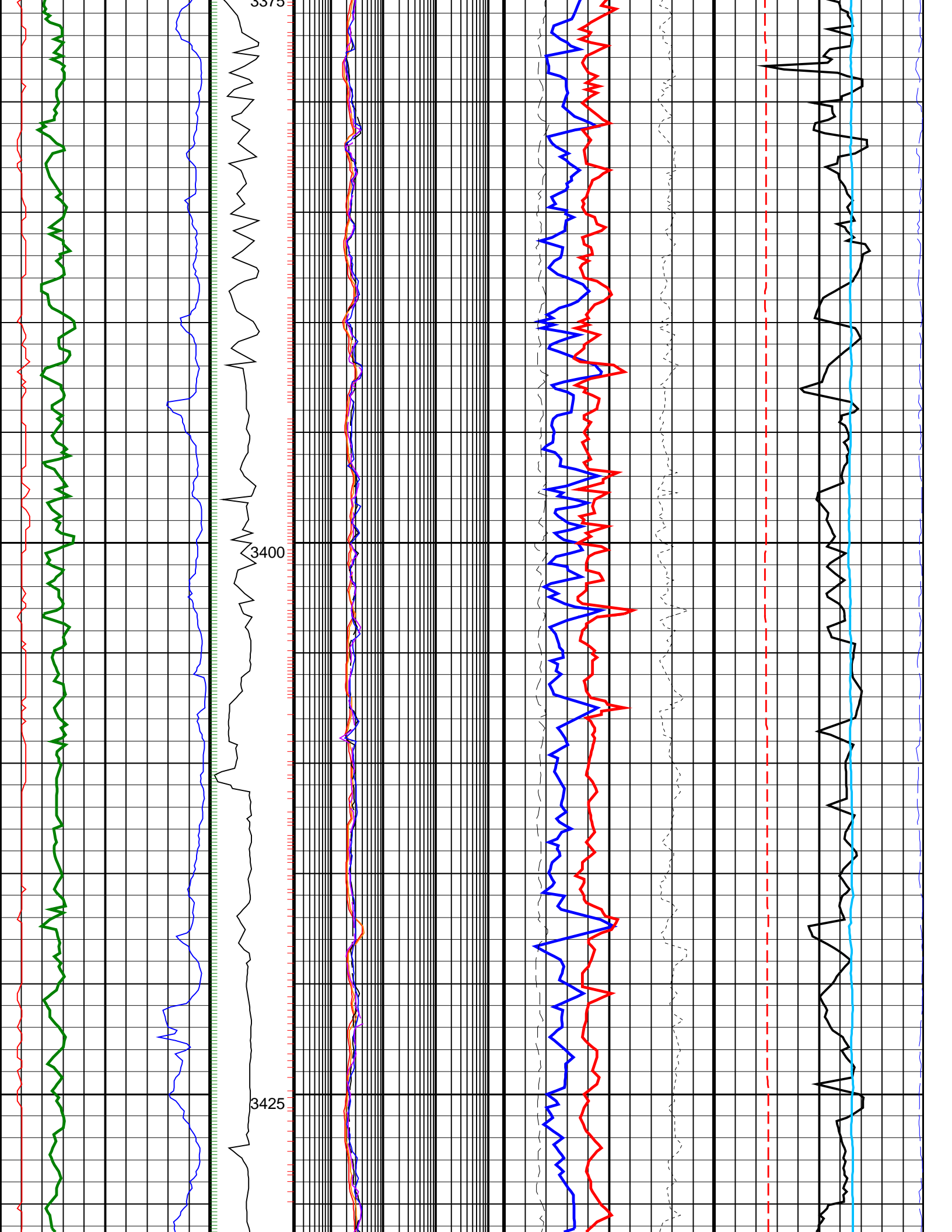
- └ Gamma Ray Samples
- └ Resisitivity Samples

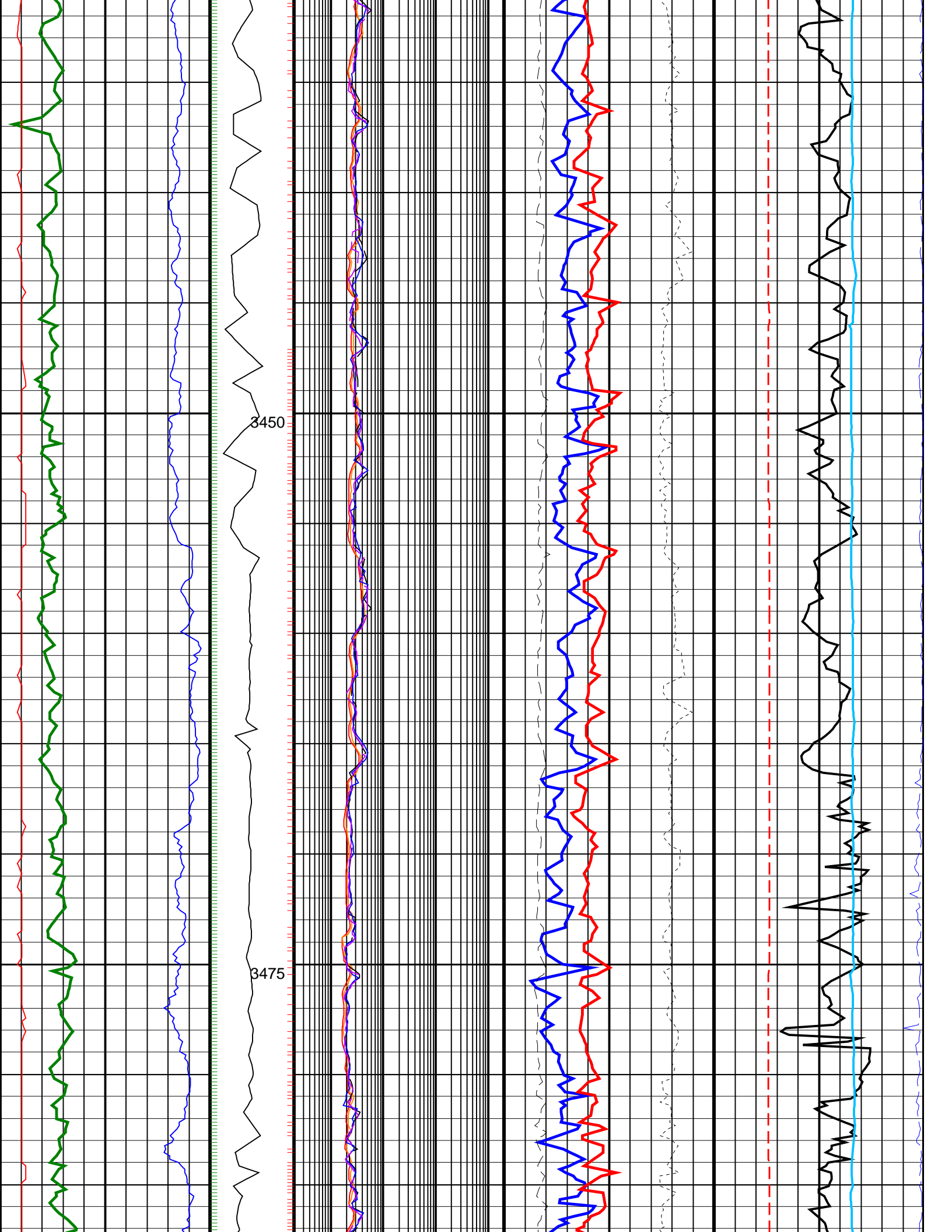
		Shallow Button Resistivity, Real-Time (RES_BS_RT) 0.2 (OHMM) 2000			
		Deep Button Resistivity, Real-Time (RES_BD_RT) 0.2 (OHMM) 2000			Equivalent Circulating Density, Real-Time (ECD_ECO_RT) 0 (G/C3) 2
Ultrasonic Caliper, Average Diameter, Real-Time, Recomputed at Surface (UCAV_ECO_RT) 8 (IN) 13		Ring Resistivity, Real-Time (RES_RING_RT) 0.2 (OHMM) 2000	Photoelectric Factor, Bottom, Real-Time, Computed Downhole (PEB_DH_ECO_RT) 0 (----) 10	Bulk Density Correction, Bottom, Real-Time Computed Downhole (DRHB_DH_ECO_RT) -0.25 (G/C3) 0.25	Delta-T Compressional, Real-Time (DTCO_RT) 40 (US/F) 140
Gamma Ray, Average, Real-Time (GRMA_ECO_RT) 0 (GAPI) 200		ARC Phase Shift Resistivity 40 inch at 2 MHz, Real-Time (P40H_ECO_RT) 0.2 (OHMM) 2000	Bulk Density, Bottom, Real-Time, Computed Downhole (ROBB_DH_ECO_RT) 1.95 (G/C3) 2.95		Coherence at Compressional Peak, Real-Time (CHCO_RT) -9 (----) 1
ROP*5 (ROP5) 200 (M/HR) 0	MWD Collar RPM (CRPM_RT) (RPM) 0 400	ARC Phase Shift Resistivity 16 inch at 2 MHz, Real-Time (P16H_ECO_RT) 0.2 (OHMM) 2000	Best Thermal Neutron Porosity, Average, Real-Time (BPHI_ECO_RT) 45 (PU) -15		Downhole Annulus Temperature, Real Time, Computed Downhole (DHAT_DH_ECO_RT) 0 (DEGC) 200

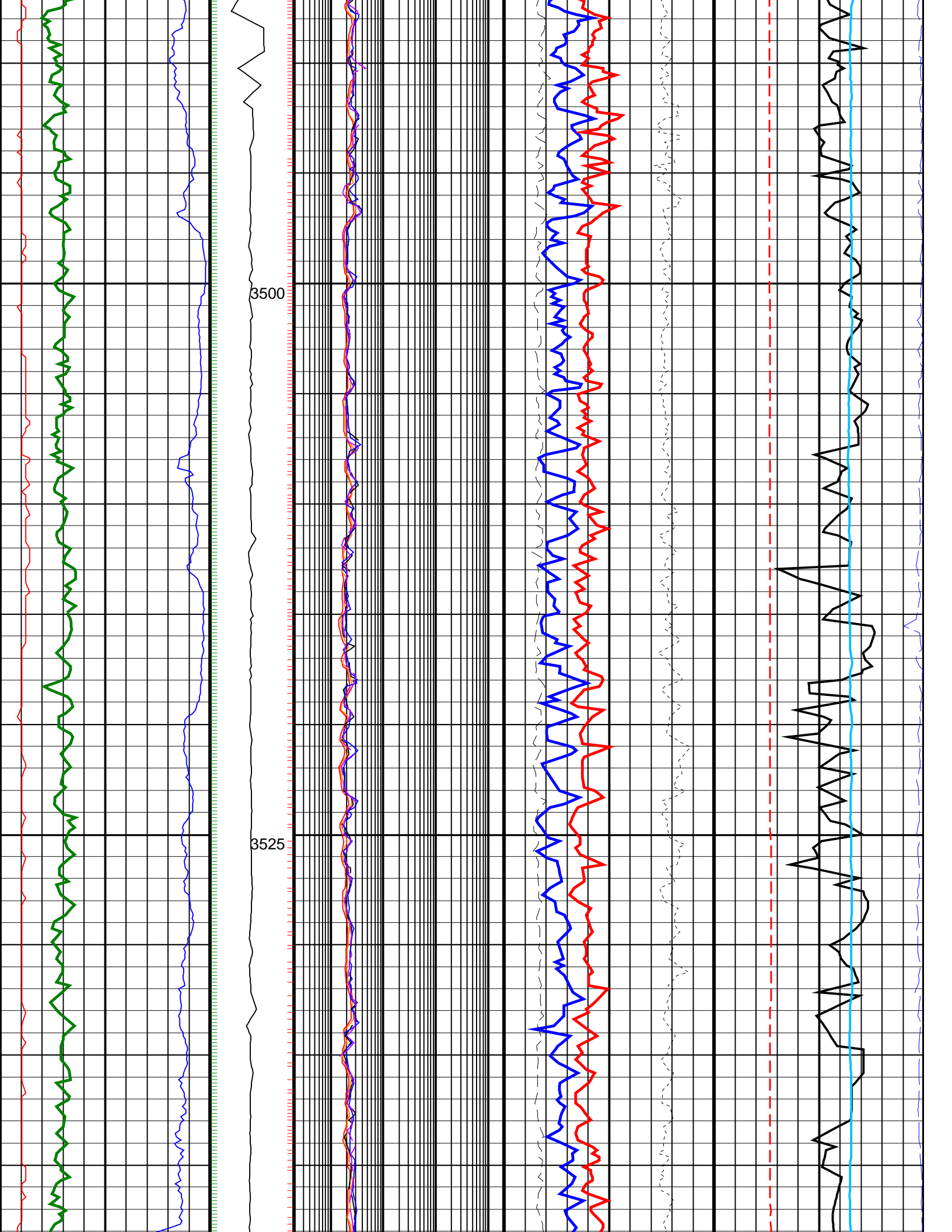


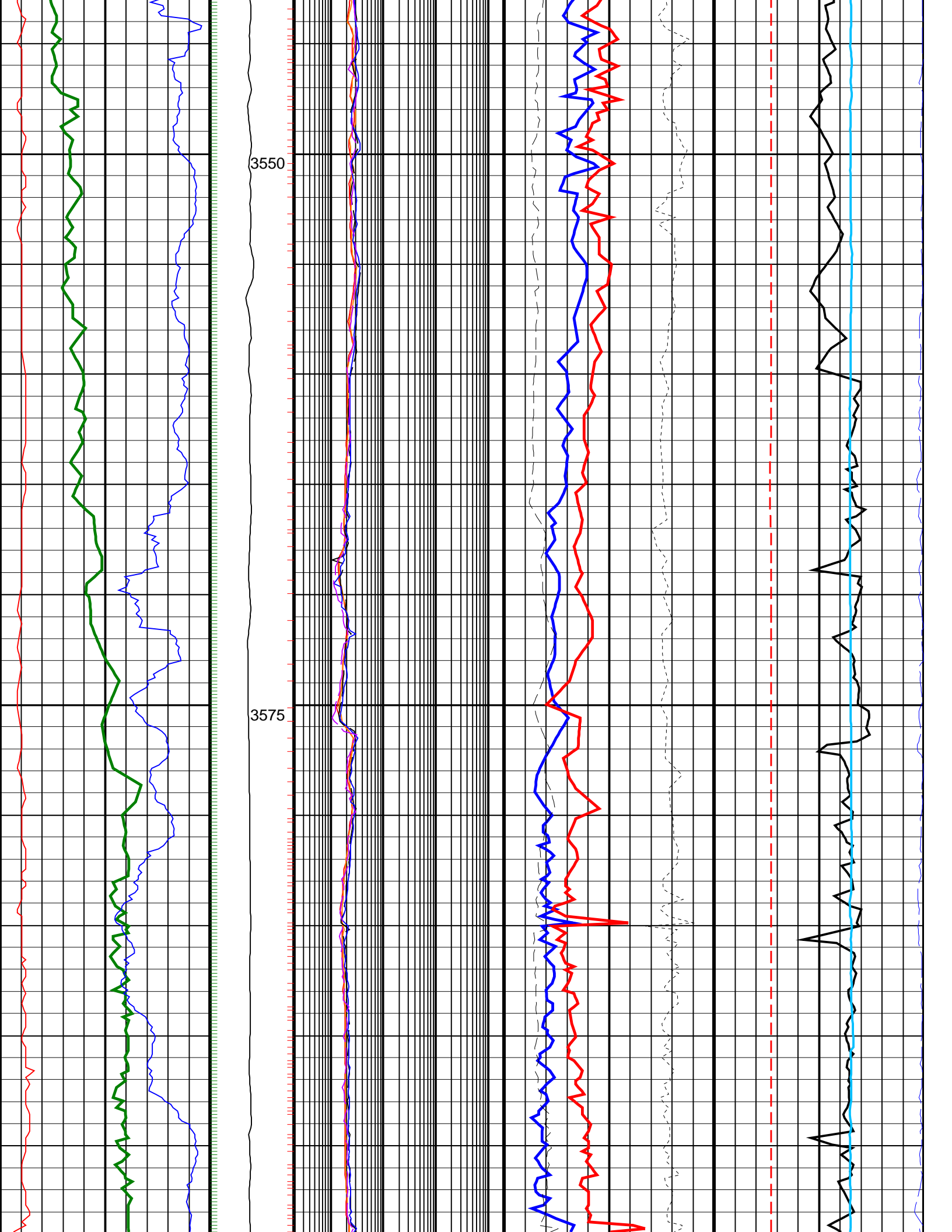


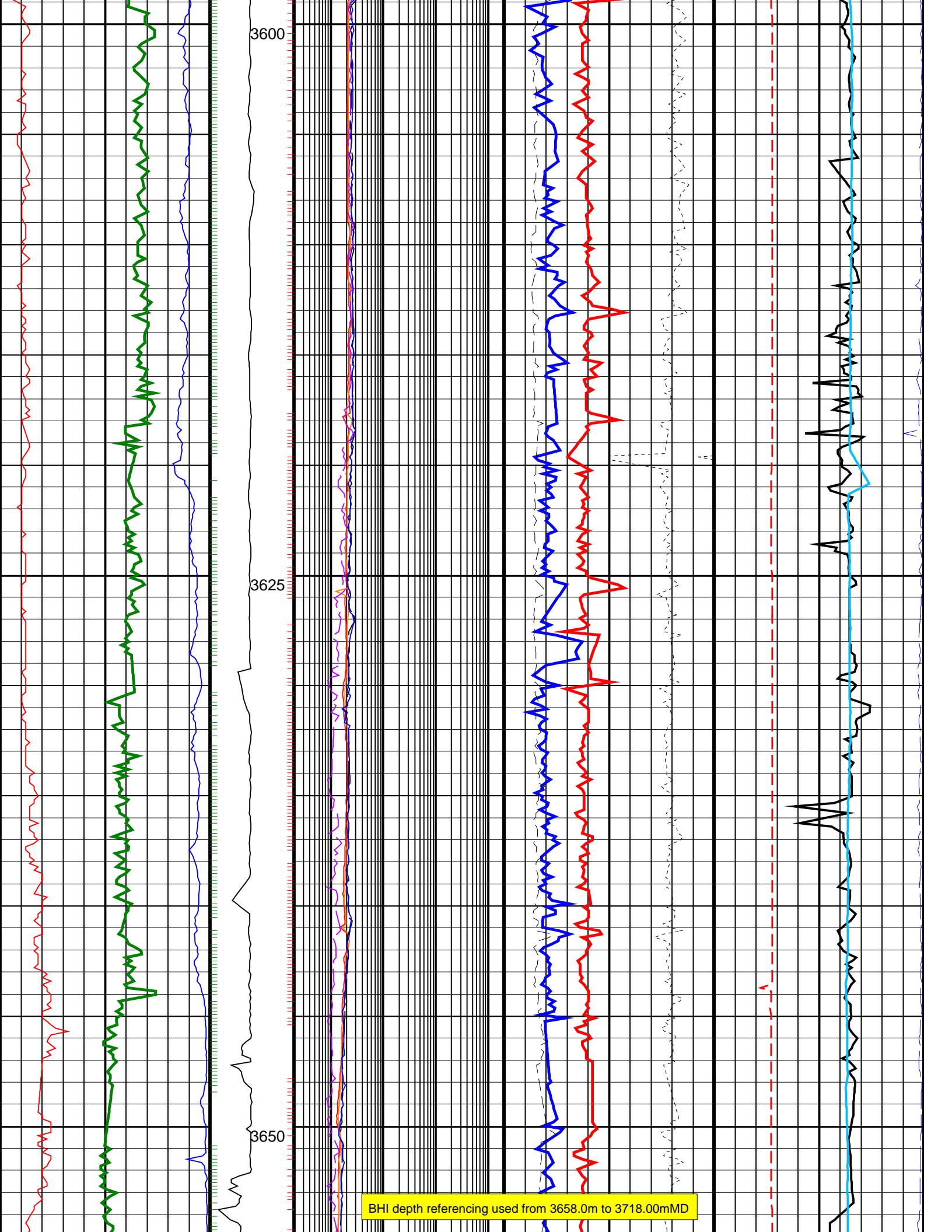


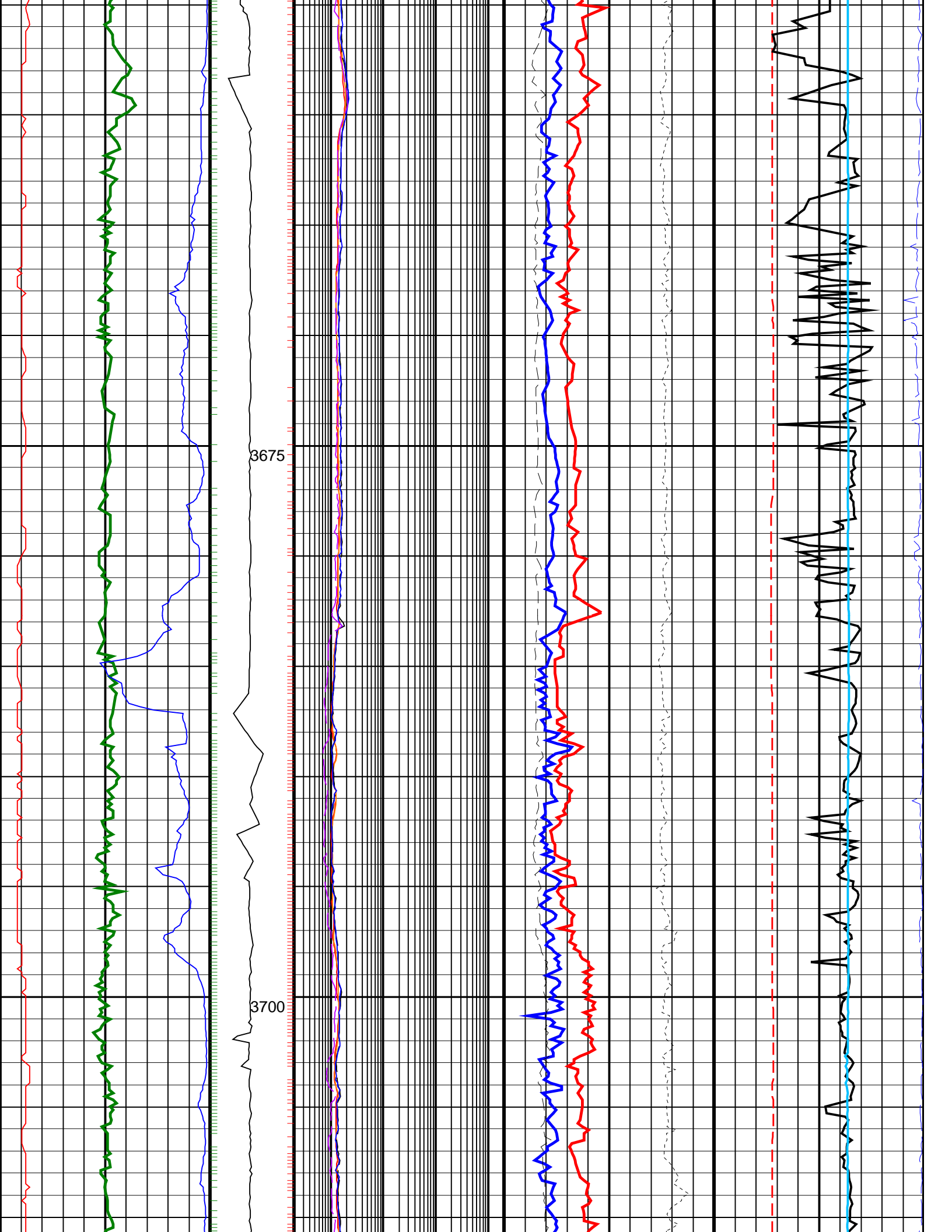


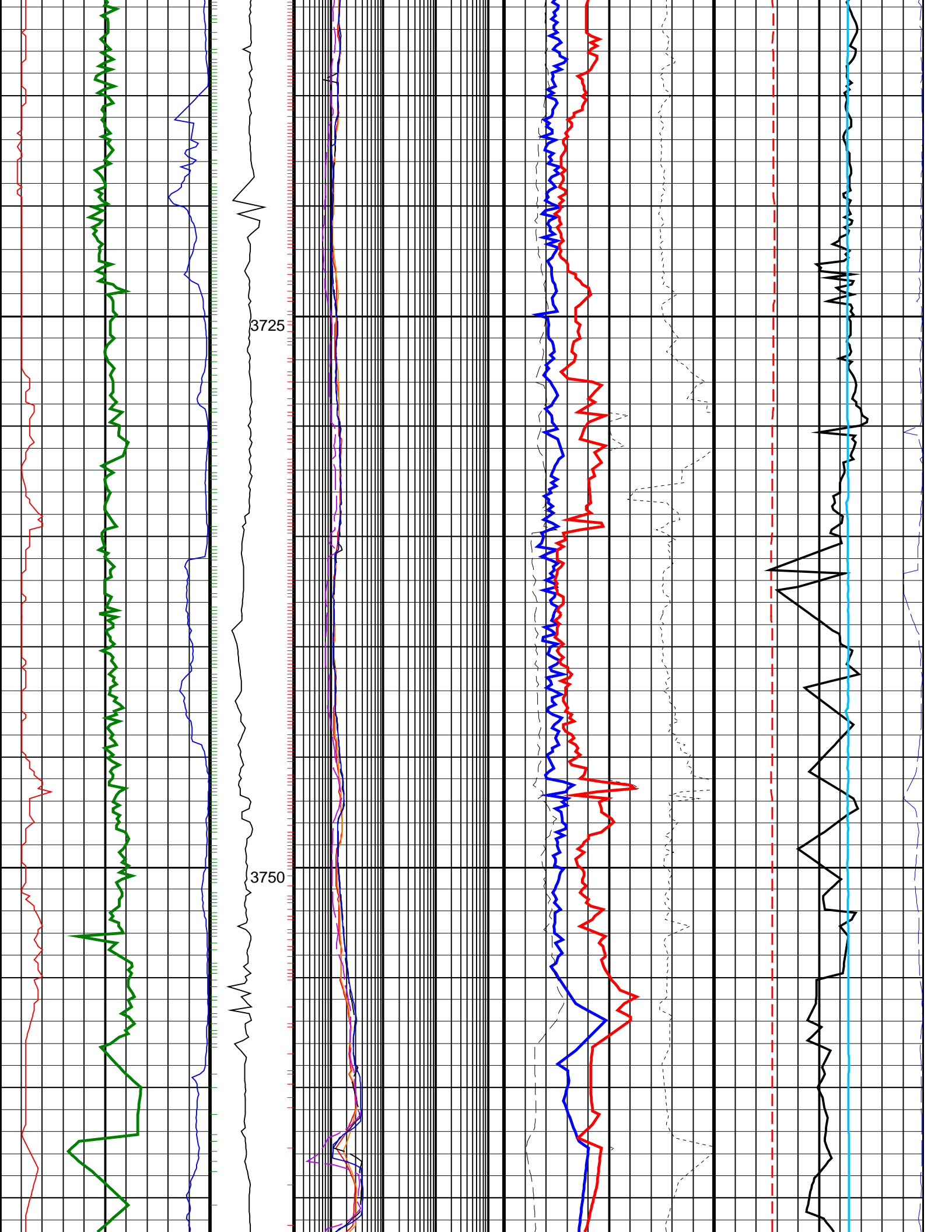


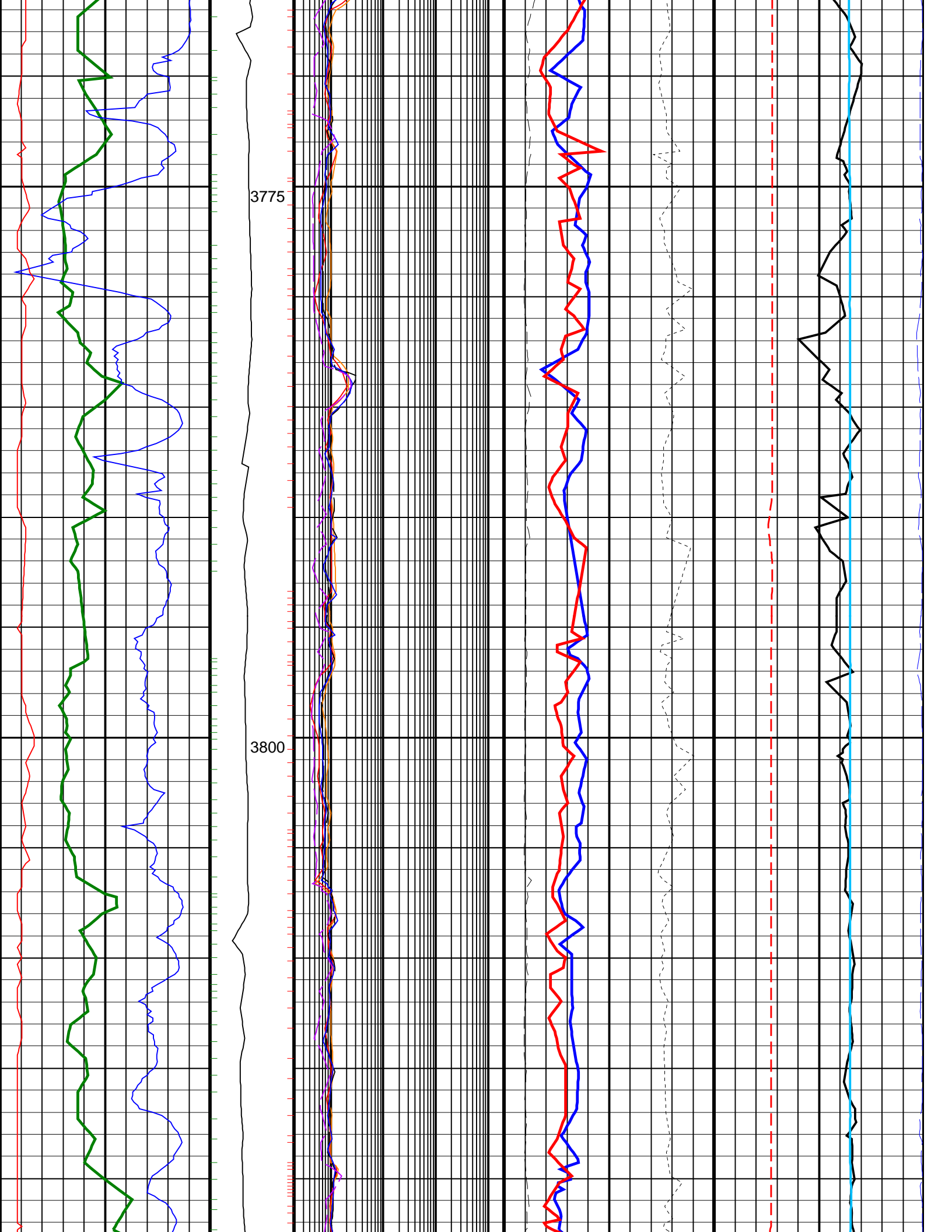


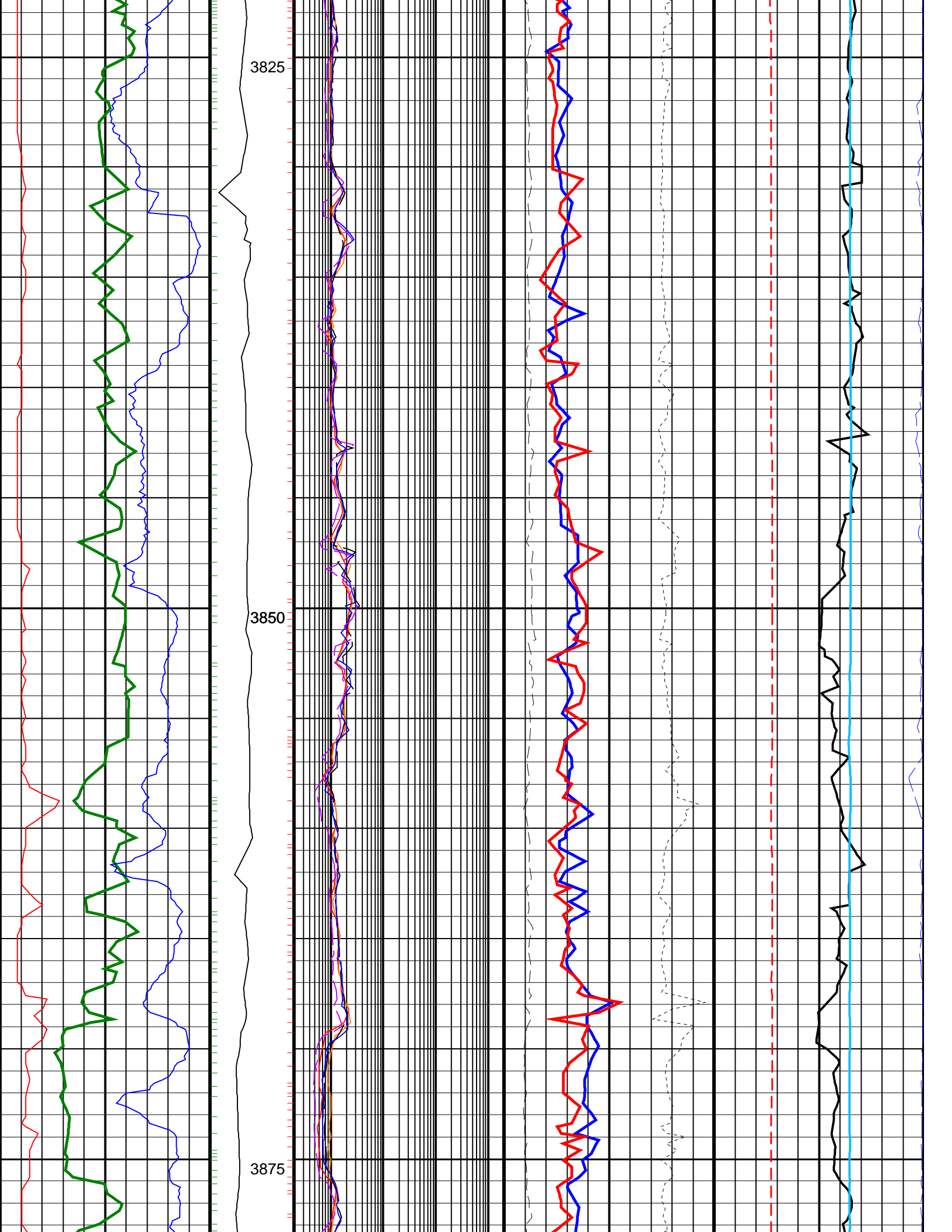


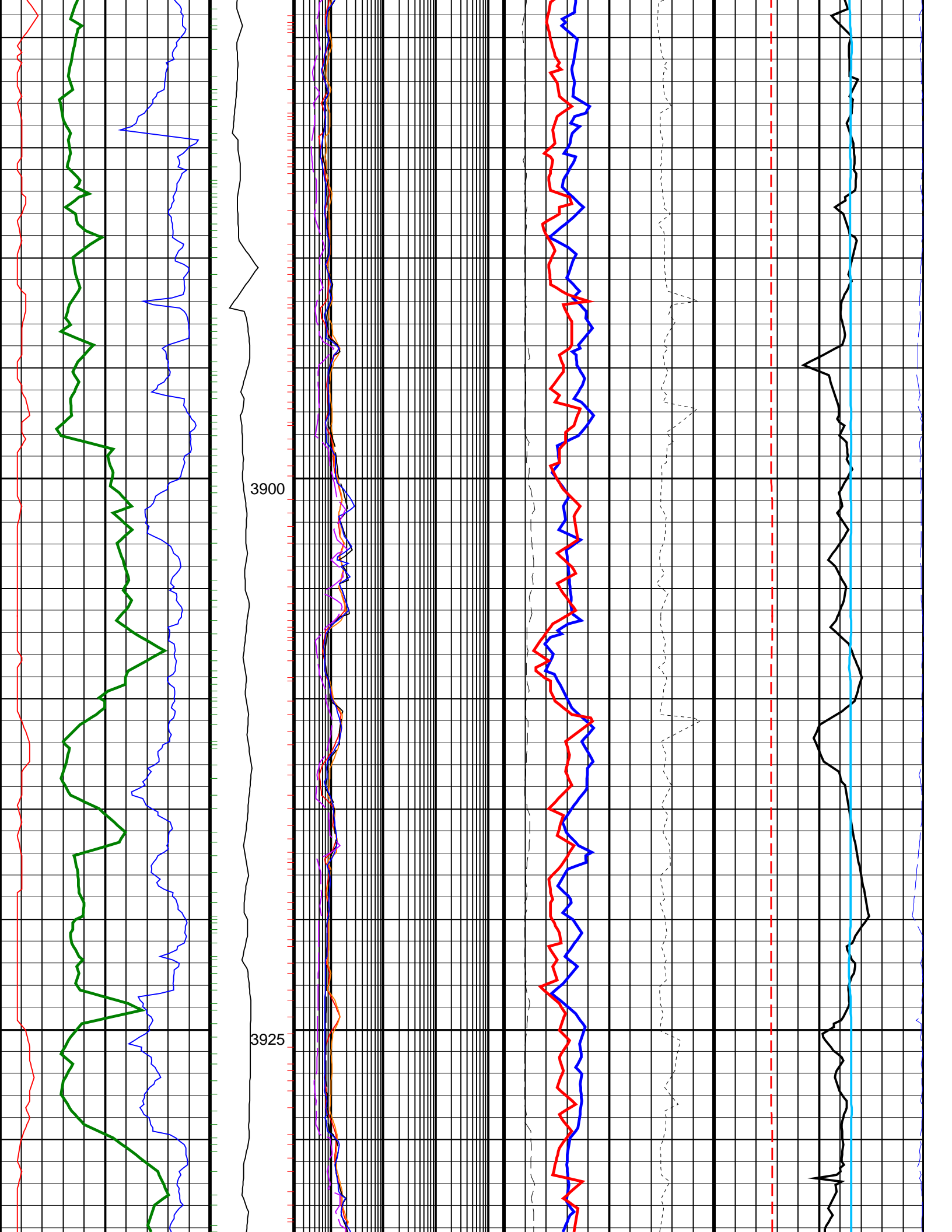


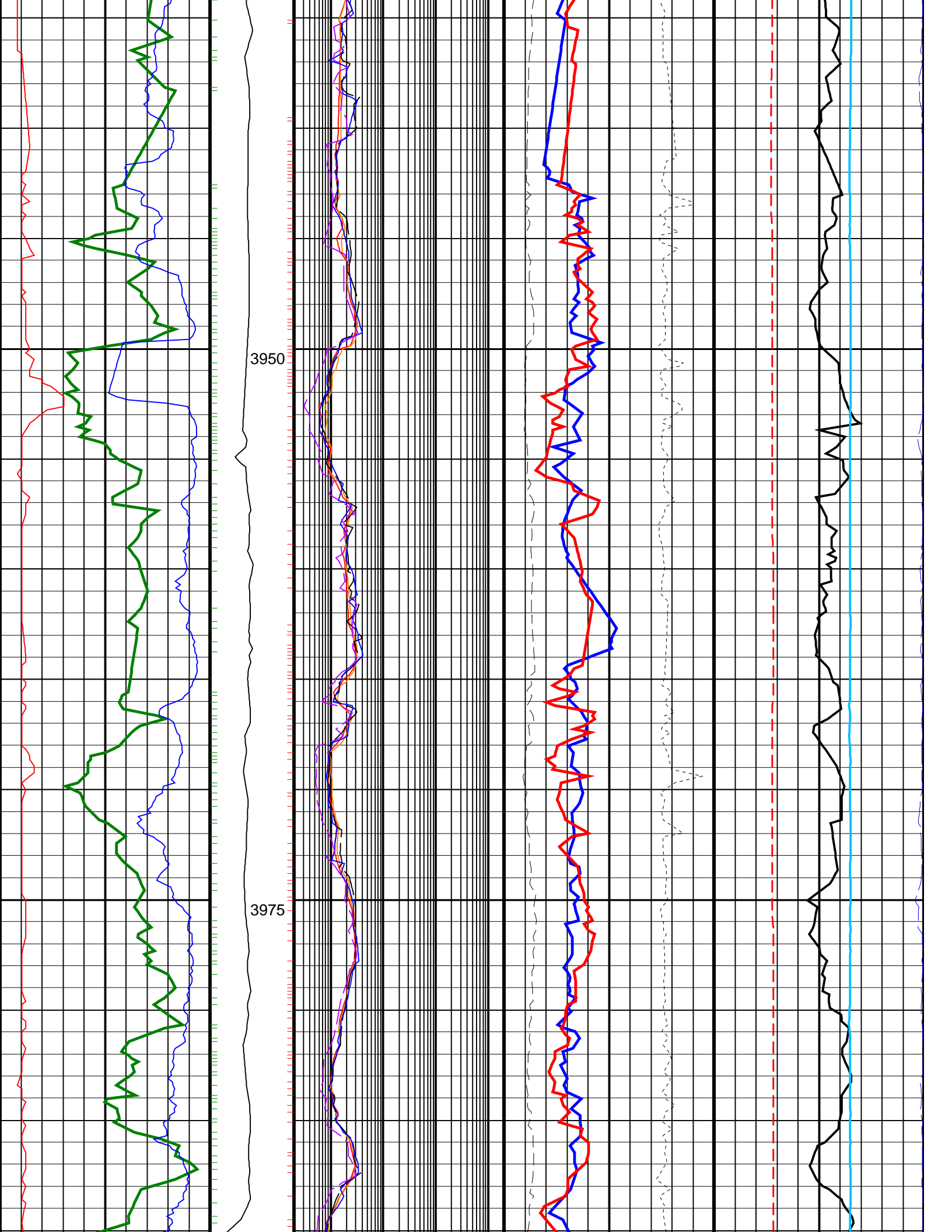


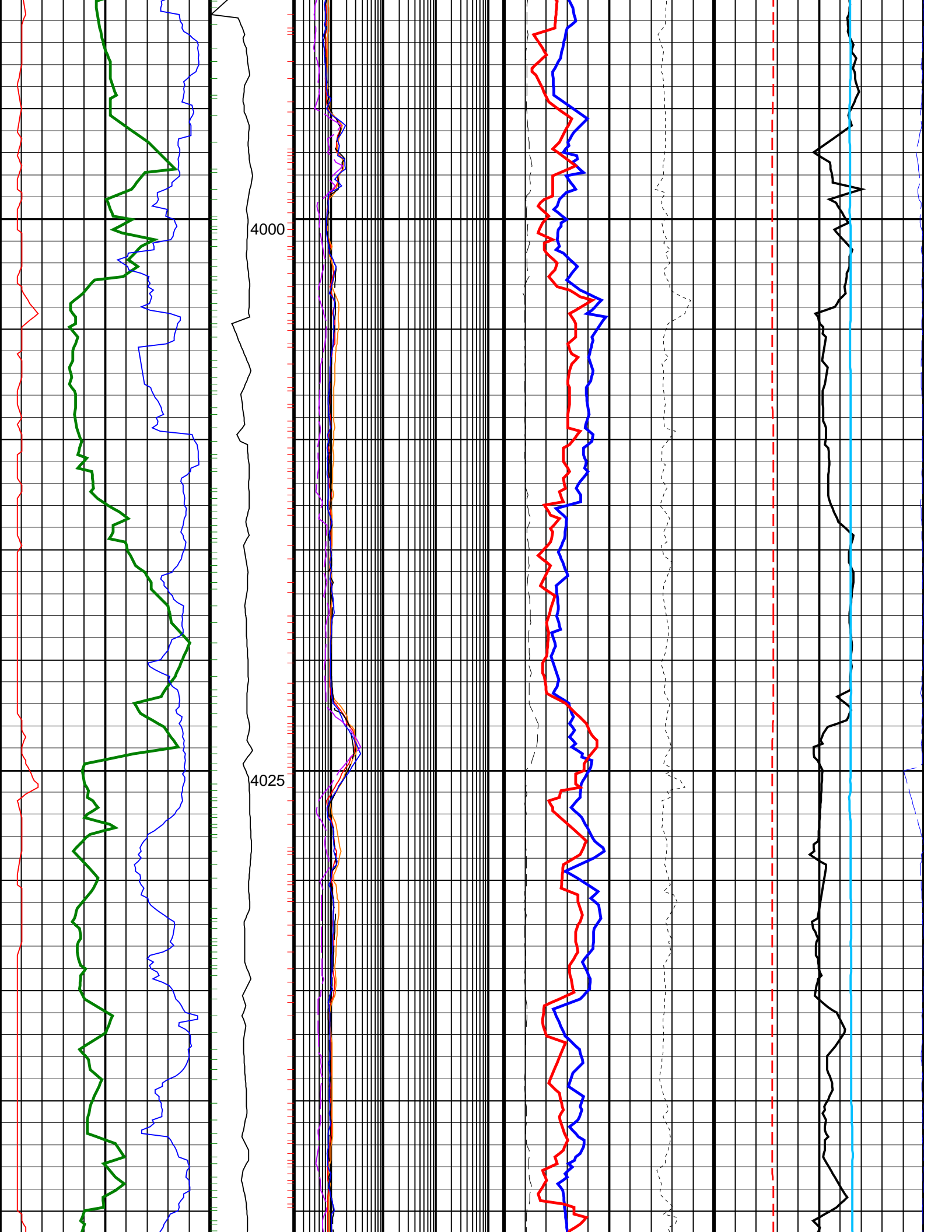


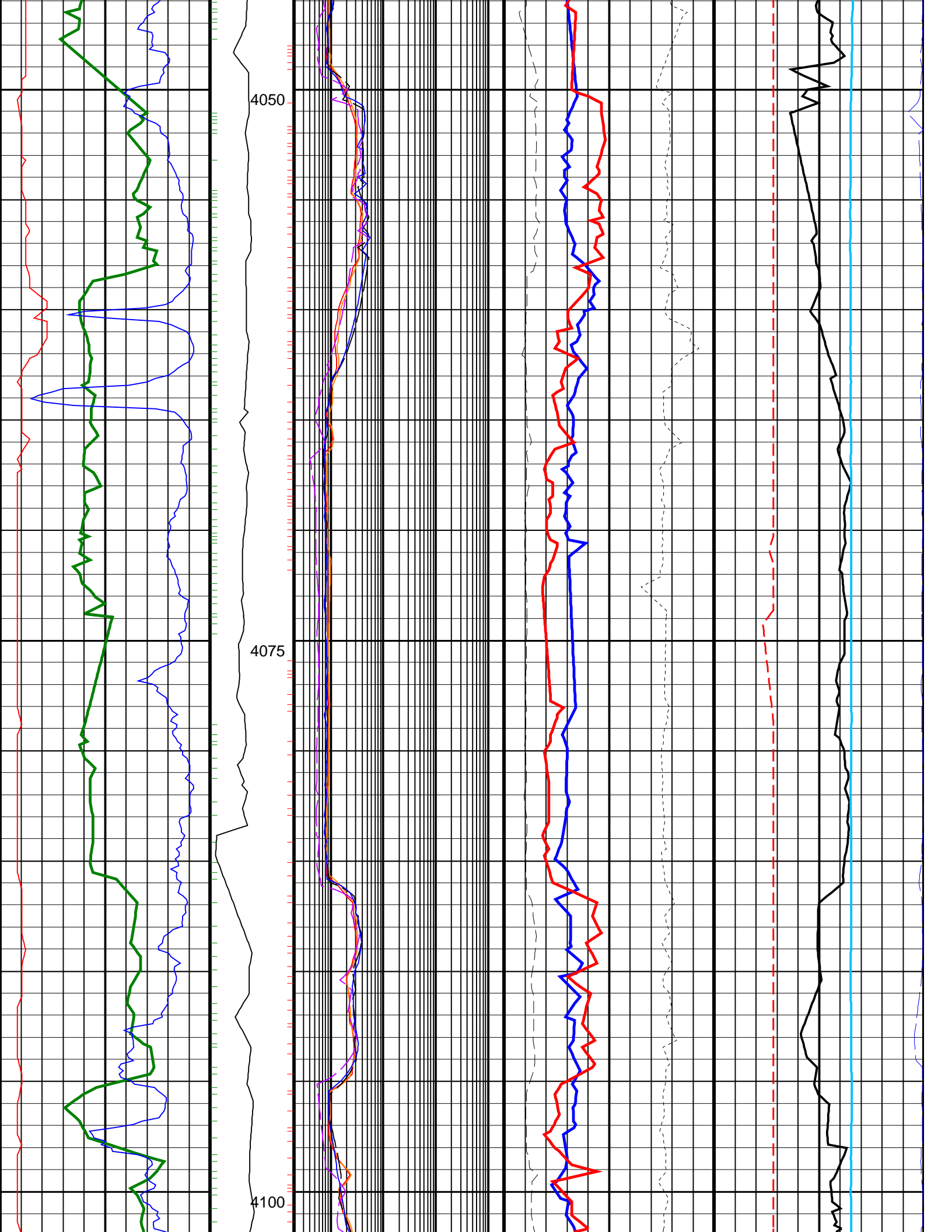


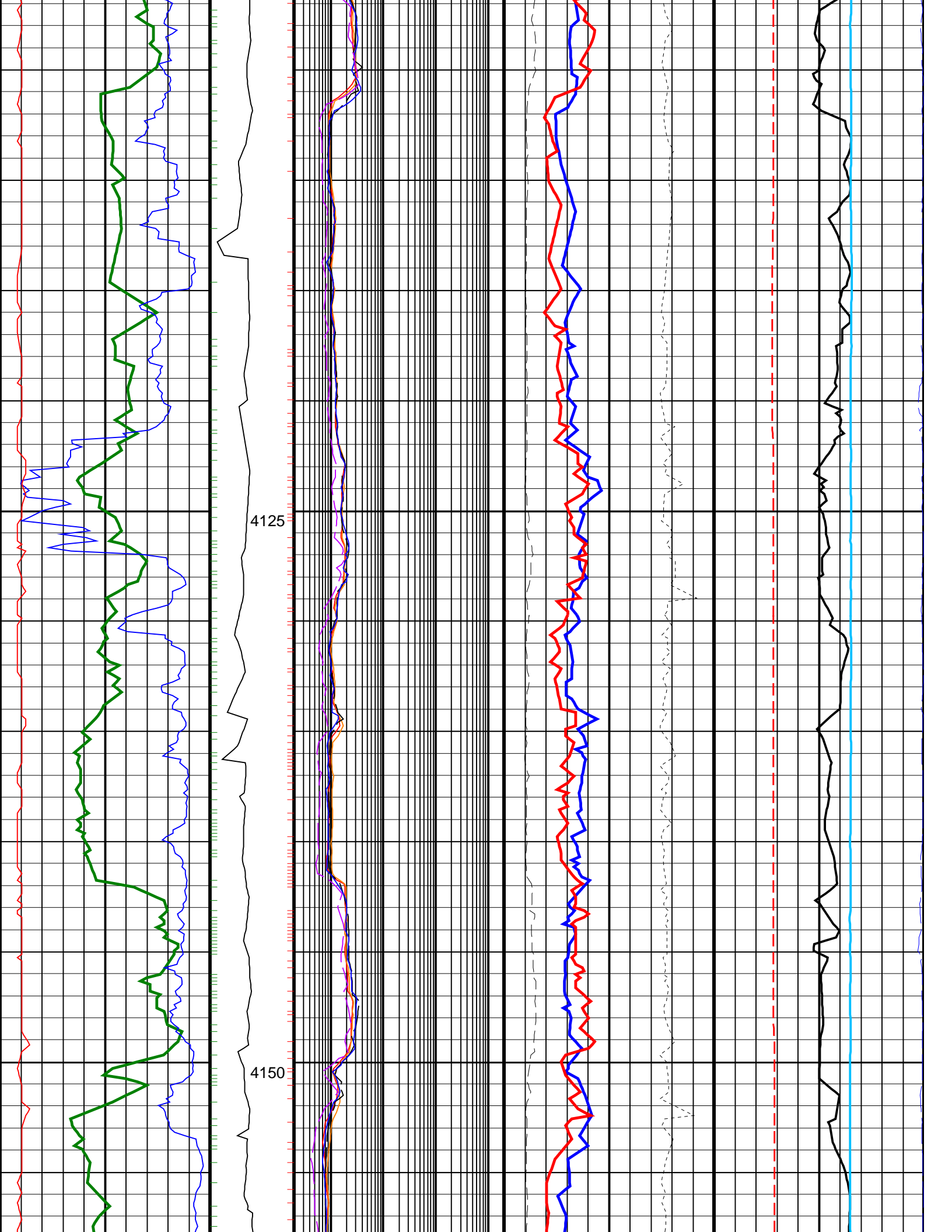


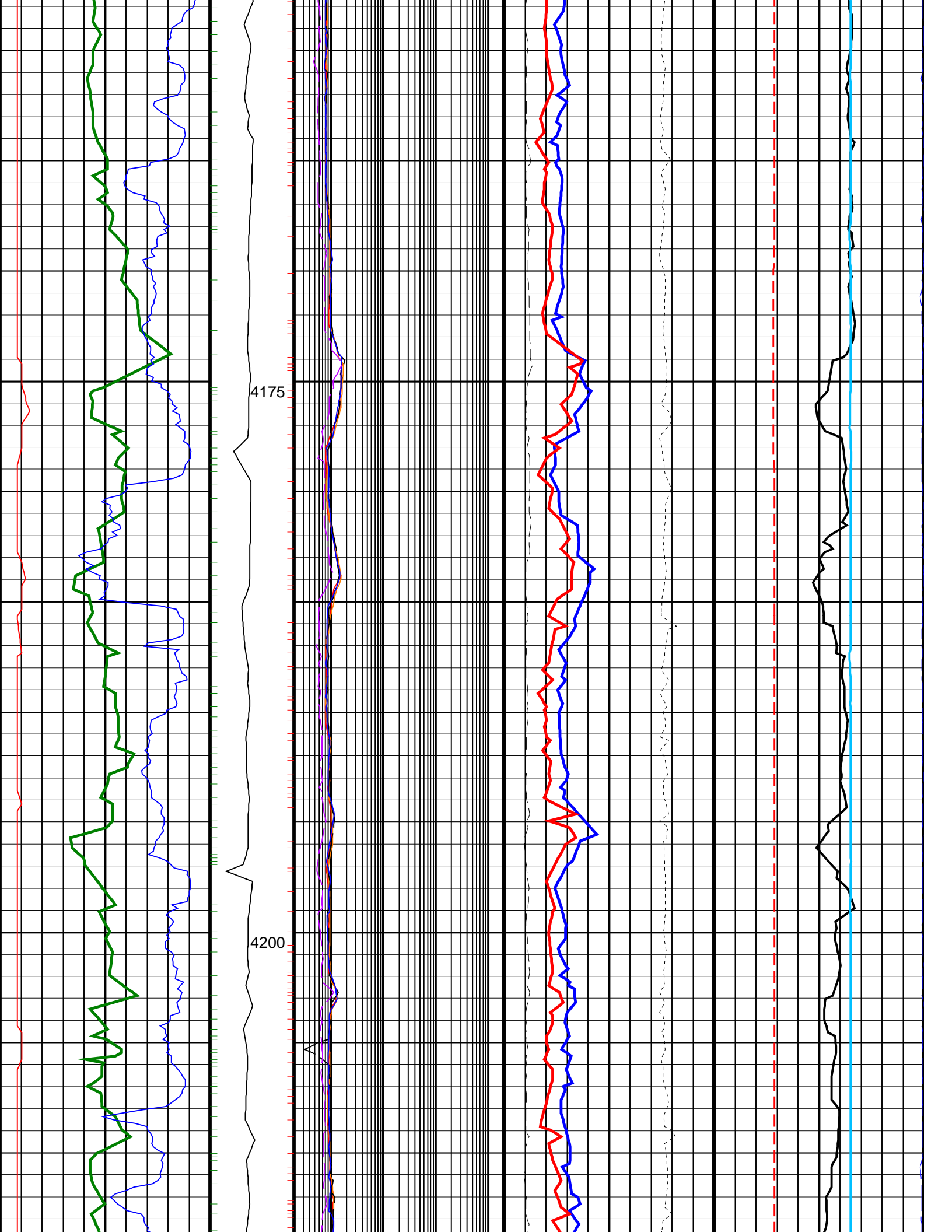


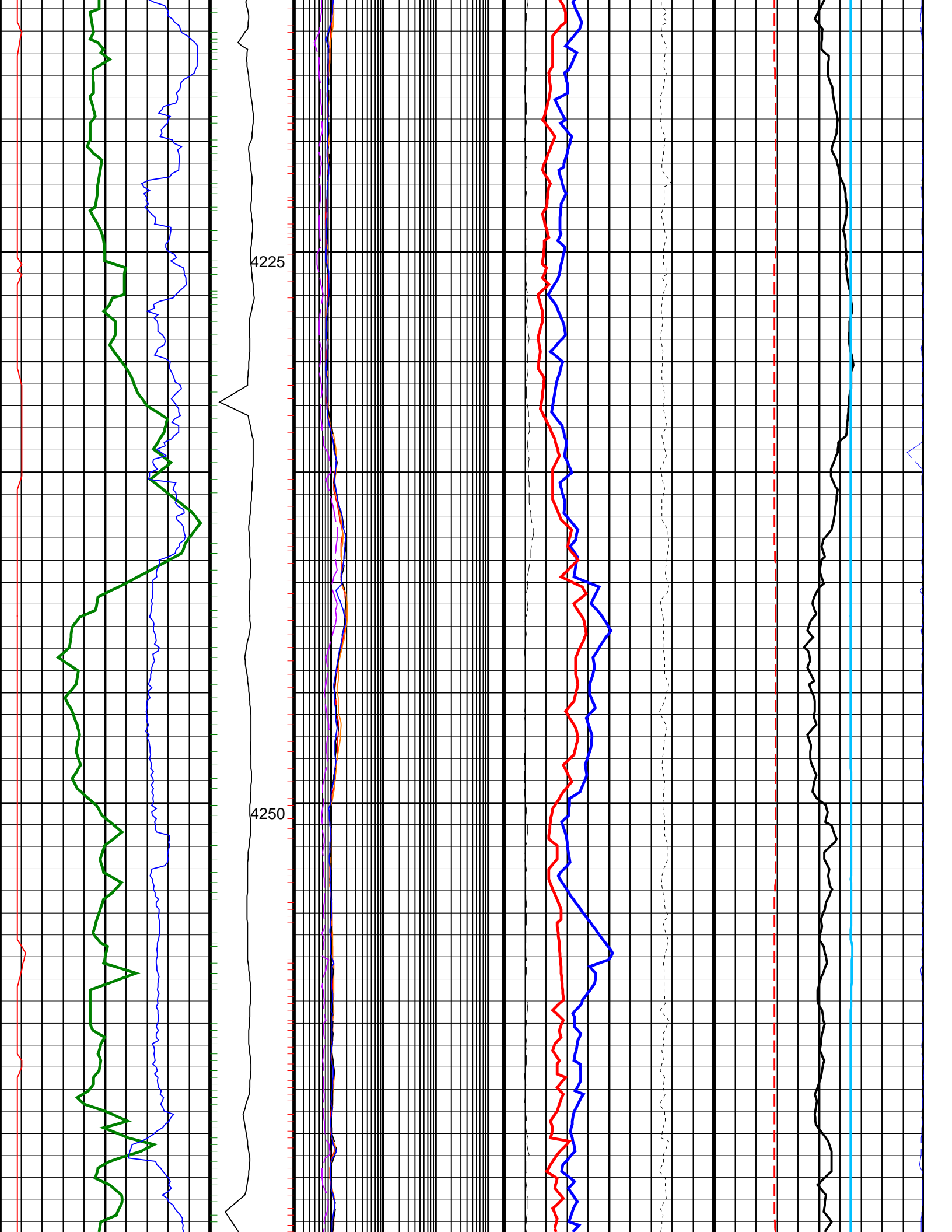


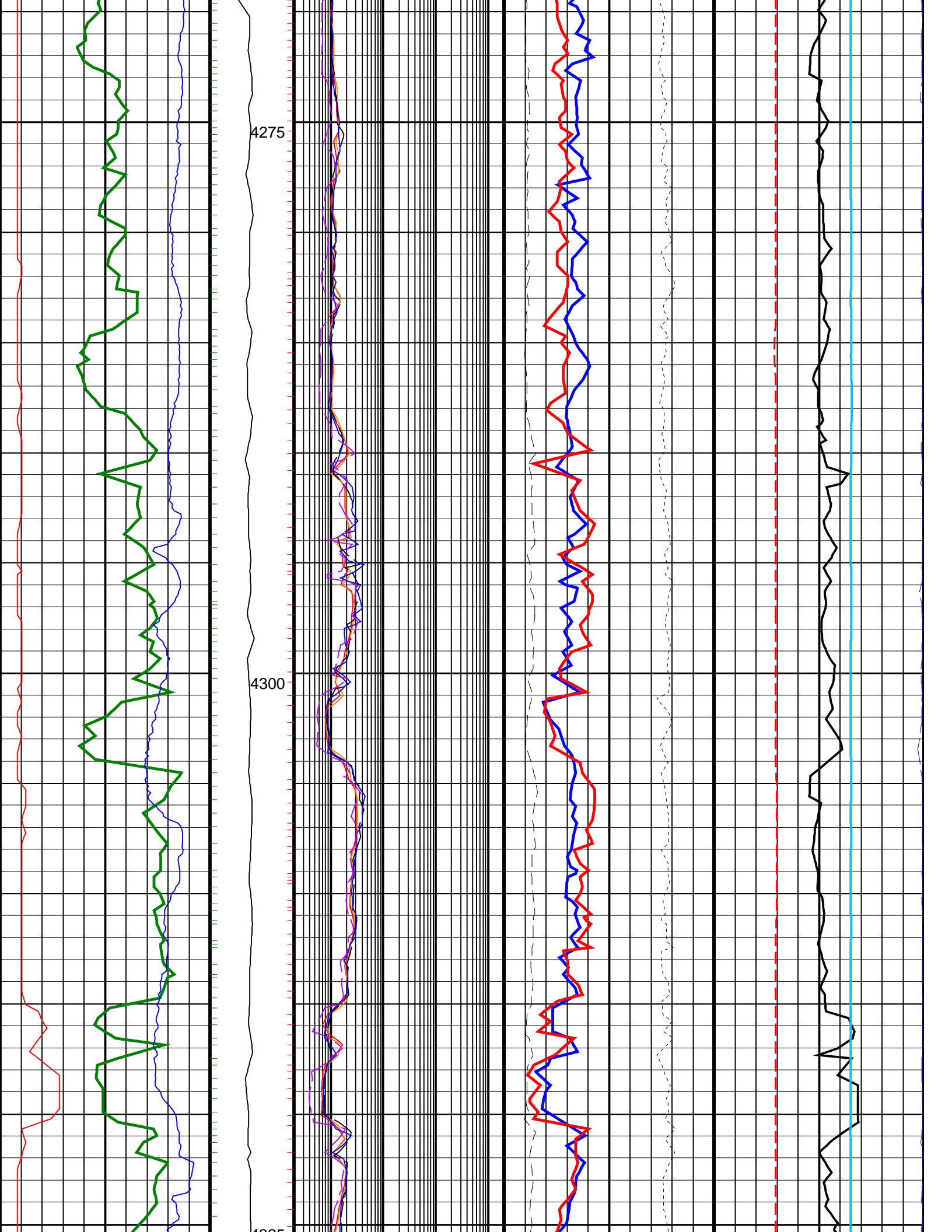


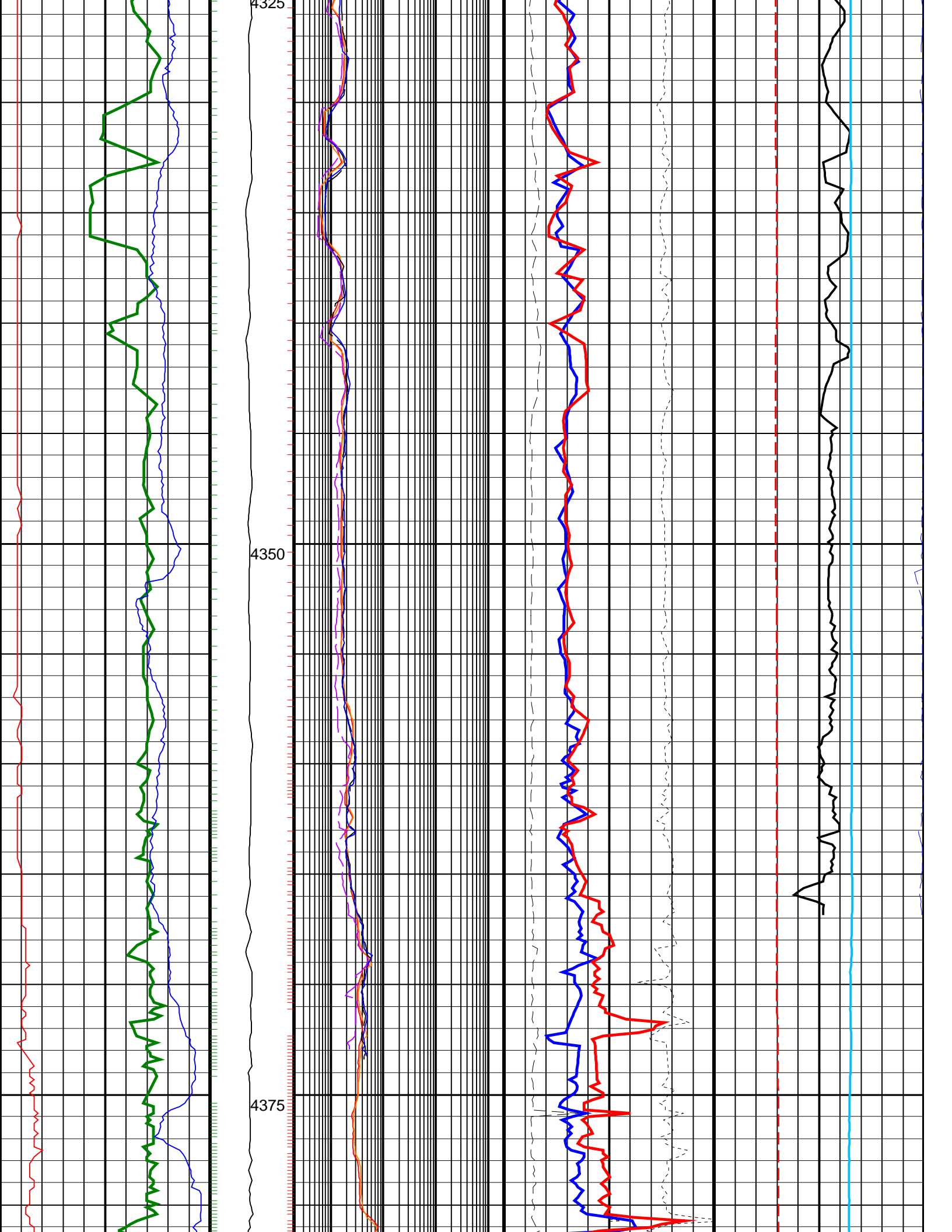


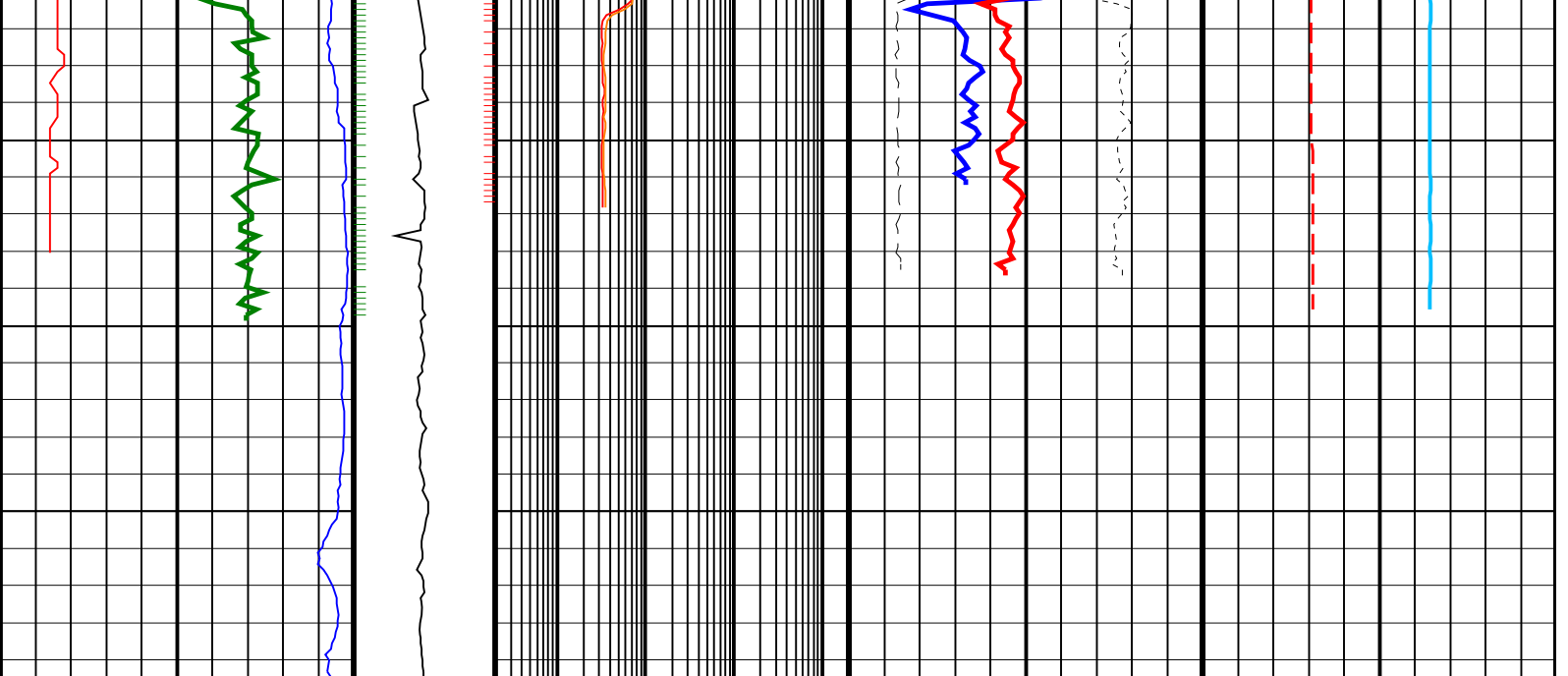












<p>ROP*5 (ROP5) 200 (M/HR) 0</p>	<p>MWD Collar RPM (CRPM_RT) (RPM) 0 400</p>	<p>ARC Phase Shift Resistivity 16 inch at 2 MHz, Real-Time (P16H_ECO_RT) 0.2 (OHMM) 2000</p>	<p>Best Thermal Neutron Porosity, Average, Real-Time (BPHI_ECO_RT) 45 (PU) -15</p>	<p>Downhole Annulus Temperature, Real Time, Computed Downhole (DHAT_DH_ECO_RT) 0 (DEGC) 200</p>
<p>Gamma Ray, Average, Real-Time (GRMA_ECO_RT) 0 (GAPI) 200</p>		<p>ARC Phase Shift Resistivity 40 inch at 2 MHz, Real-Time (P40H_ECO_RT) 0.2 (OHMM) 2000</p>	<p>Bulk Density, Bottom, Real-Time, Computed Downhole (ROBB_DH_ECO_RT) 1.95 (G/C3) 2.95</p>	<p>Coherence at Compressional Peak, Real-Time (CHCO_RT) -9 (----) 1</p>
<p>Ultrasonic Caliper, Average Diameter, Real-Time, Recomputed at Surface (UCAV_ECO_RT) 8 (IN) 13</p>		<p>Ring Resistivity, Real-Time (RES_RING_RT) 0.2 (OHMM) 2000</p>	<p>Photoelectric Factor, Bottom, Real-Time, Computed Downhole (PEB_DH_ECO_RT) 0 (----) 10 Bulk Density Correction, Bottom, Real-Time Computed Downhole (DRHB_DH_ECO_RT) (G/C3) -0.25 0.25</p>	<p>Delta-T Compressional, Real-Time (DTCO_RT) 40 (US/F) 140</p>
		<p>Deep Button Resistivity, Real-Time (RES_BD_RT) 0.2 (OHMM) 2000</p> <p>Shallow Button Resistivity, Real-Time (RES_BS_RT) 0.2 (OHMM) 2000</p>		<p>Equivalent Circulating Density, Real-Time (ECD_ECO_RT) 0 (G/C3) 2</p>

PIP SUMMARY

- ┆ Gamma Ray Samples
- ┆ Resistivity Samples