



DRILLING LOG



FROM : (m) 600 TO : (m) 3710 SCALE : 1/1000

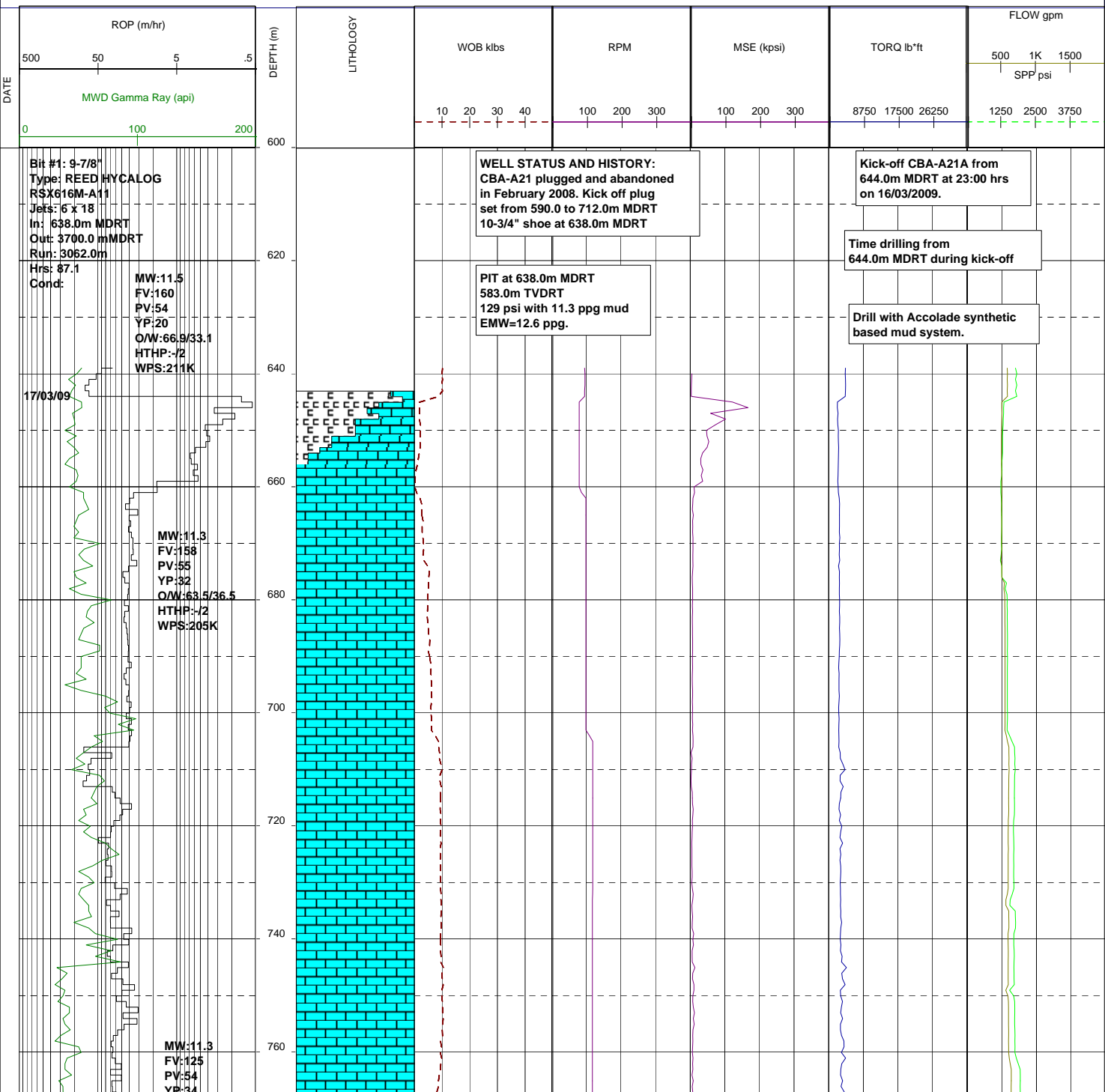
Well Name : Cobia A21A
Company : ESSO AUSTRALIA LTD

Country : AUSTRALIA

RT-MSL (m) : 41.0
RT-SEABED (m) : 120.0

Final TD:
Final TVD:

Generated by geoNEXT Package

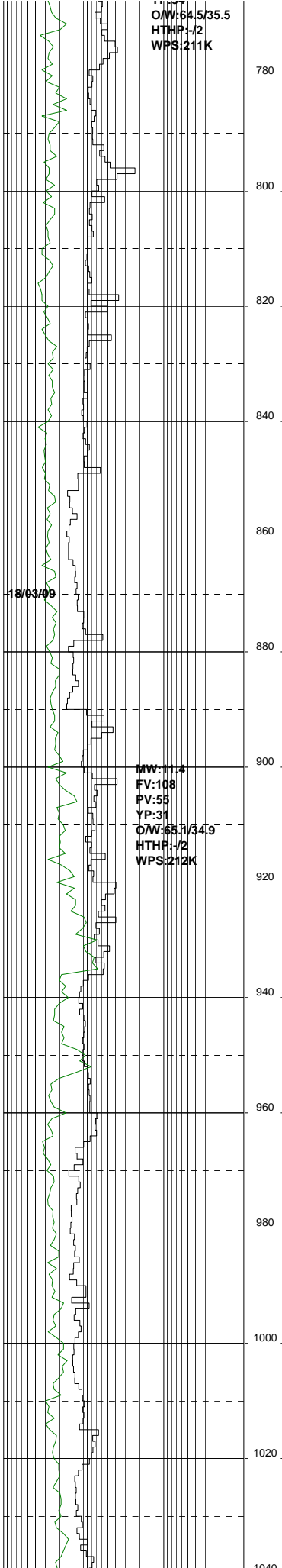
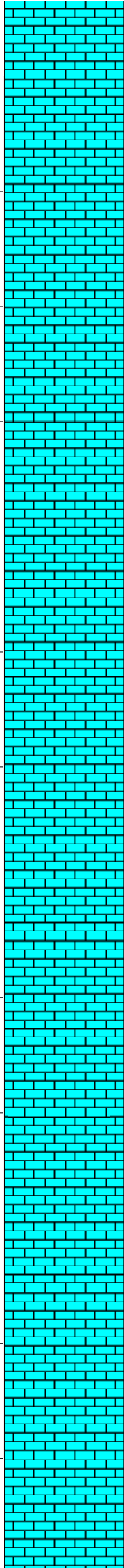


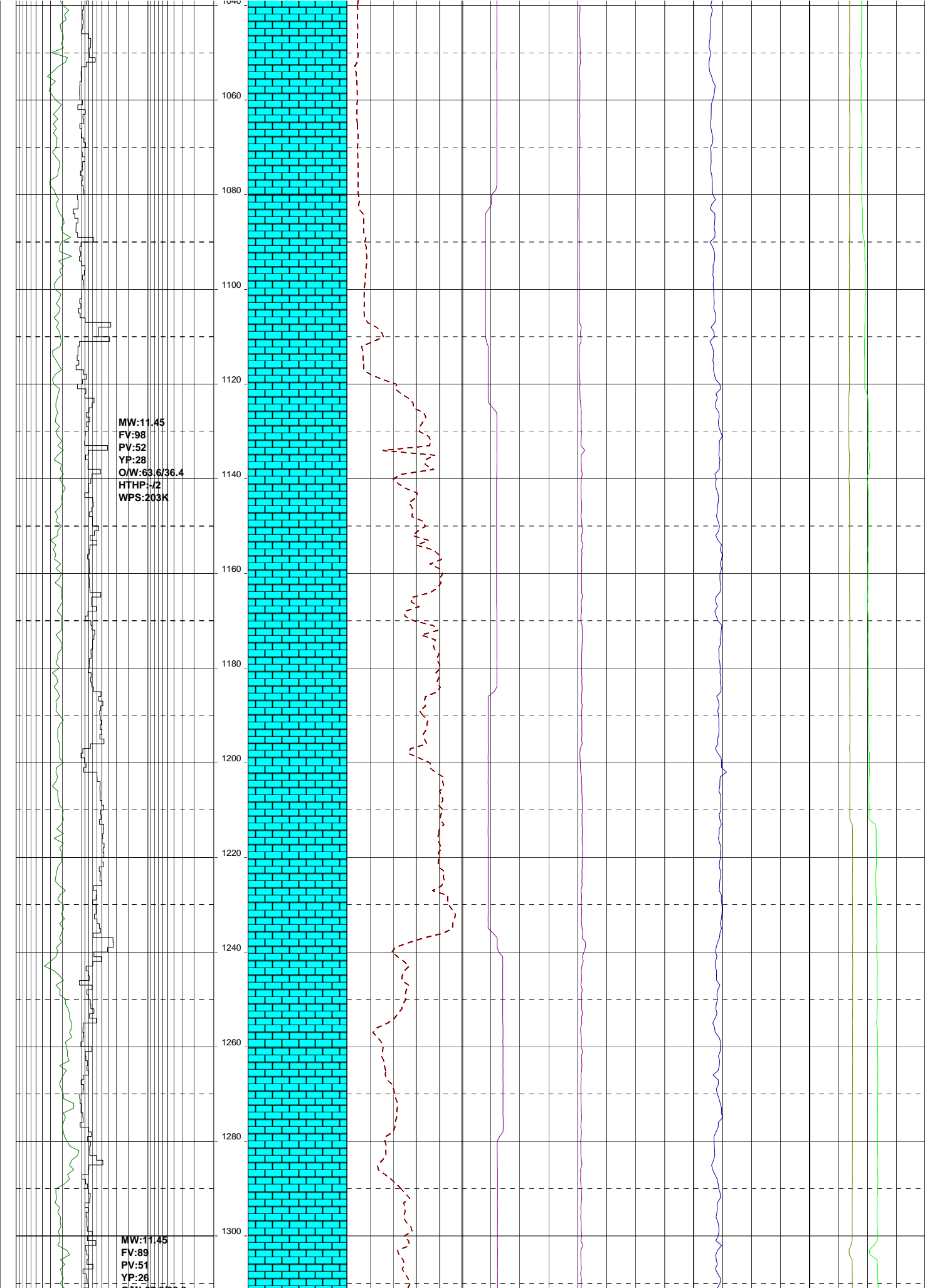
O/W:64.5/35.5
HTHP:-/2
WPS:211K

780
800
820
840
860
880
900
920
940
960
980
1000
1020
1040

18/03/09

MW:11.4
FV:108
PV:55
YP:31
O/W:65.1/34.9
HTHP:-/2
WPS:212K



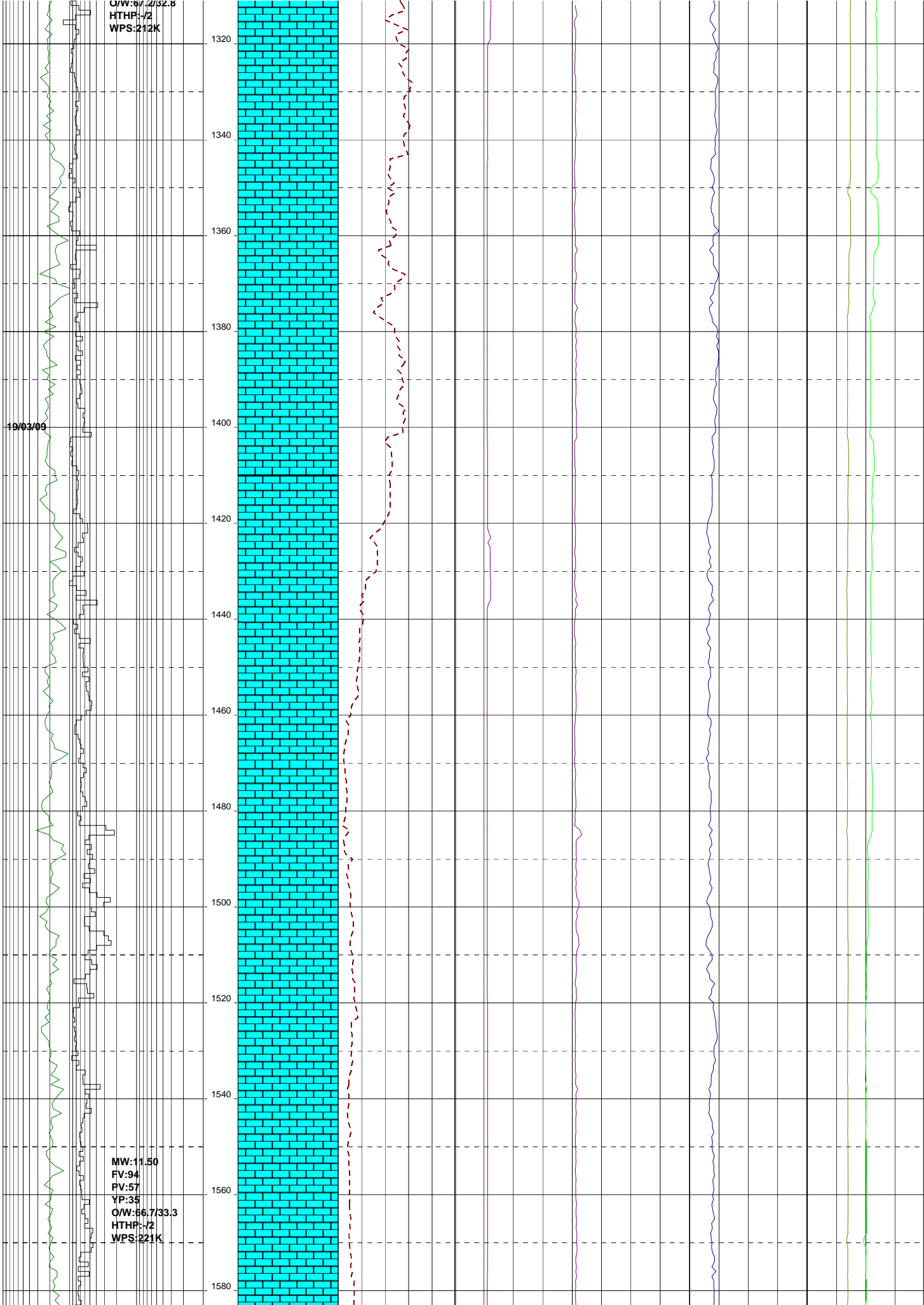


O/W:67.2/32.8
HTHP:-/2
WPS:212K

1320
1340
1360
1380
1400
1420
1440
1460
1480
1500
1520
1540
1560
1580

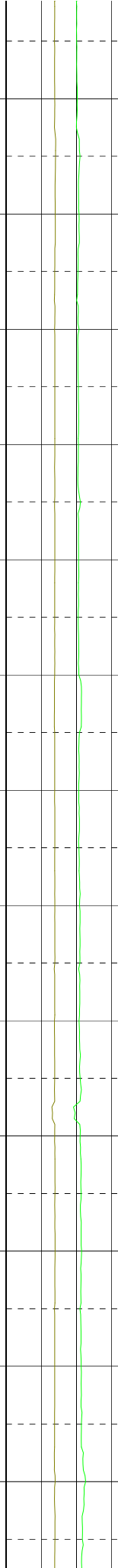
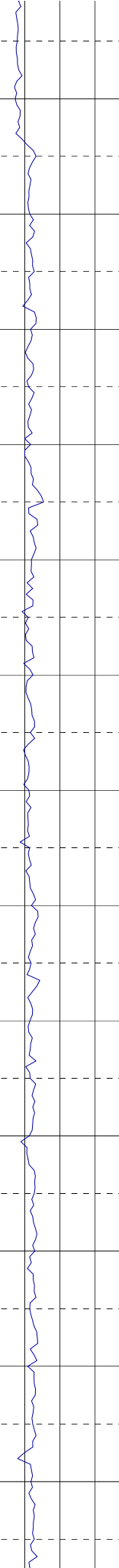
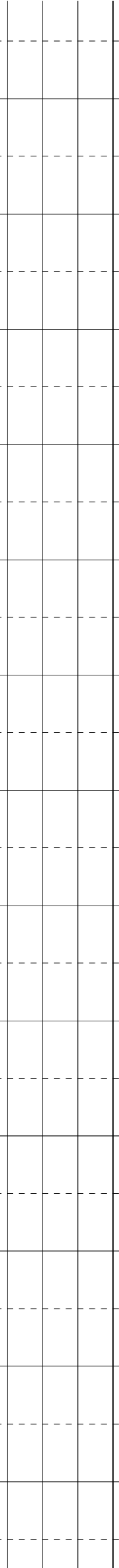
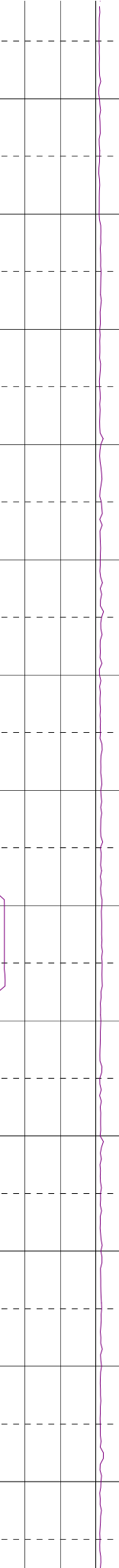
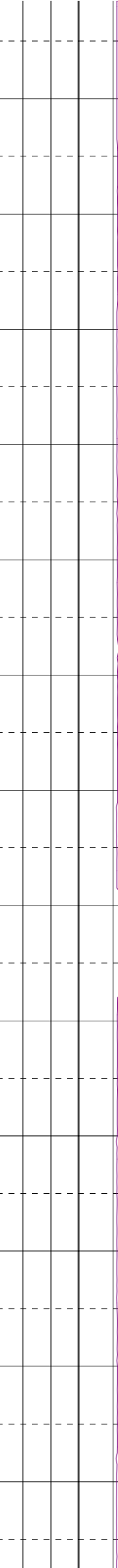
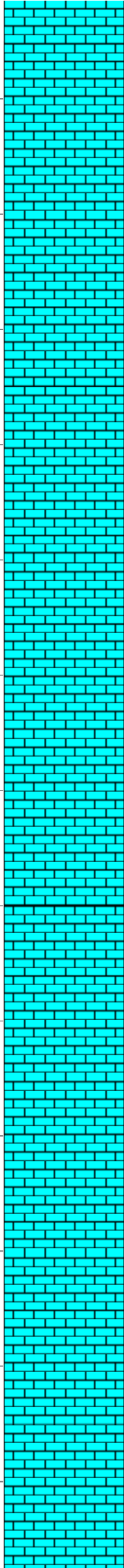
19/03/09

MW:11.50
FV:94
PV:57
YP:35
O/W:66.7/33.3
HTHP:-/2
WPS:221K



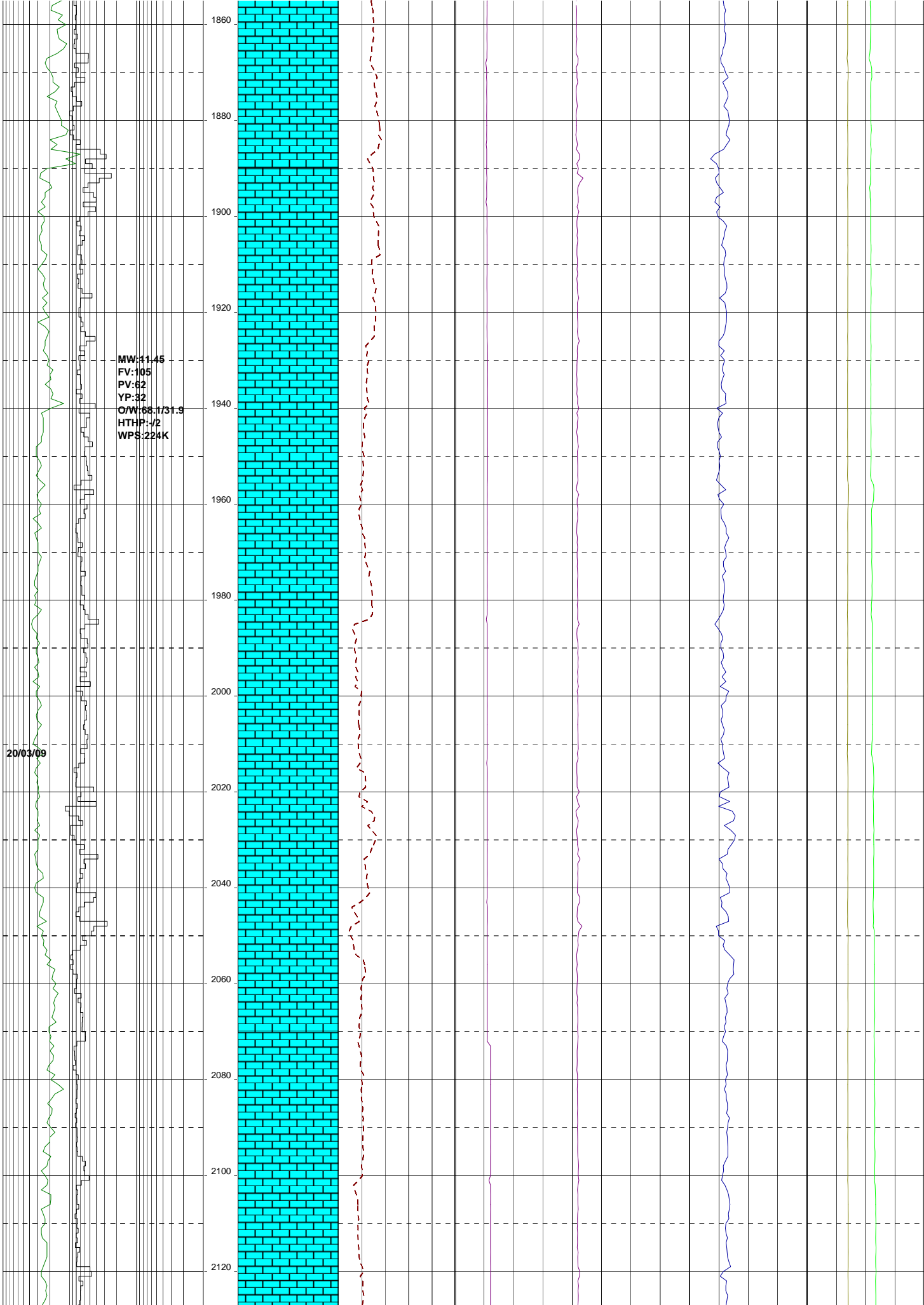
MW:11.50
FV:98
PV:60
YP:31
QW:67.9/32.1
HTHP:-/2
WPS:223K

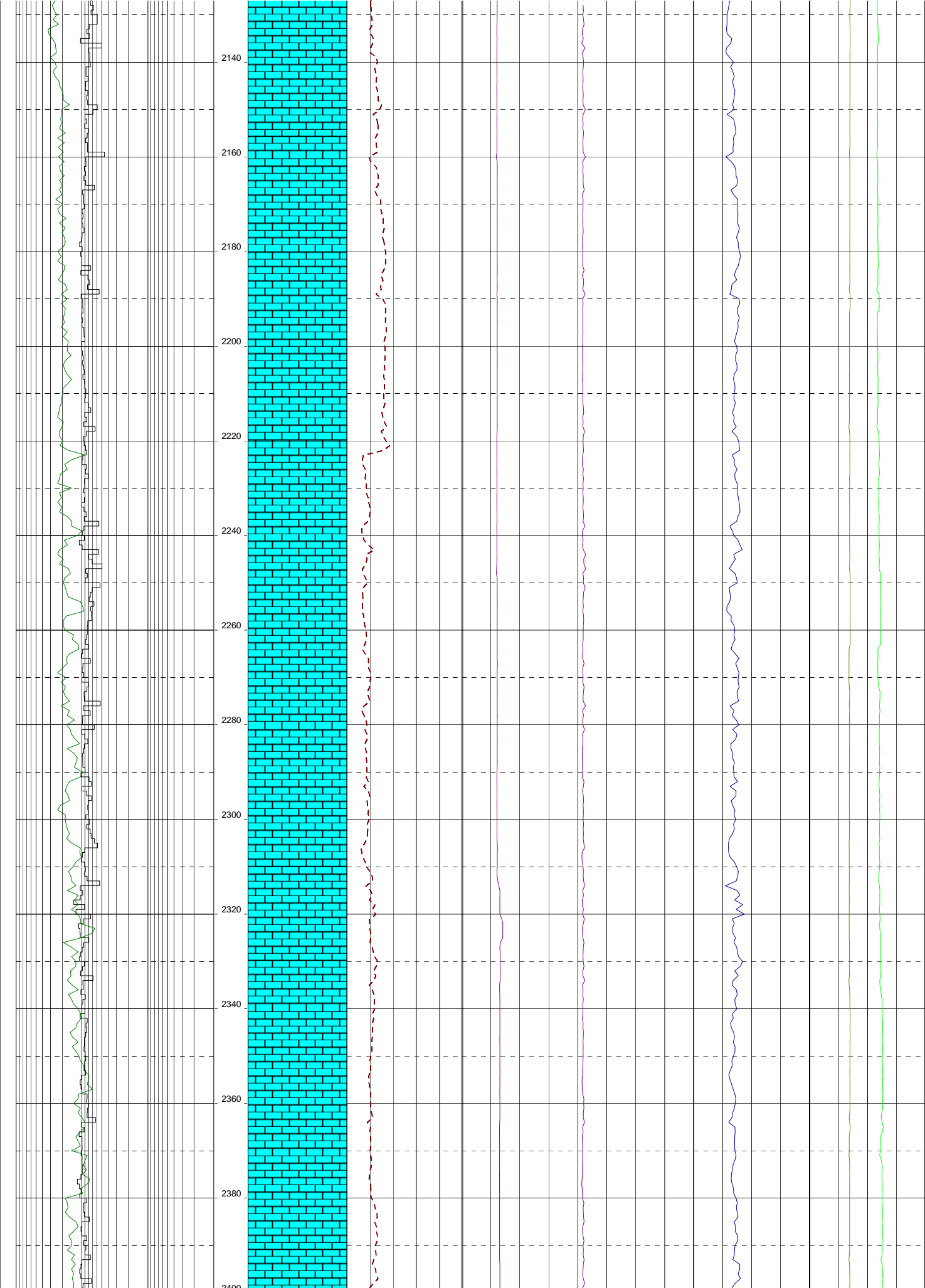
1600
1620
1640
1660
1680
1700
1720
1740
1760
1780
1800
1820
1840

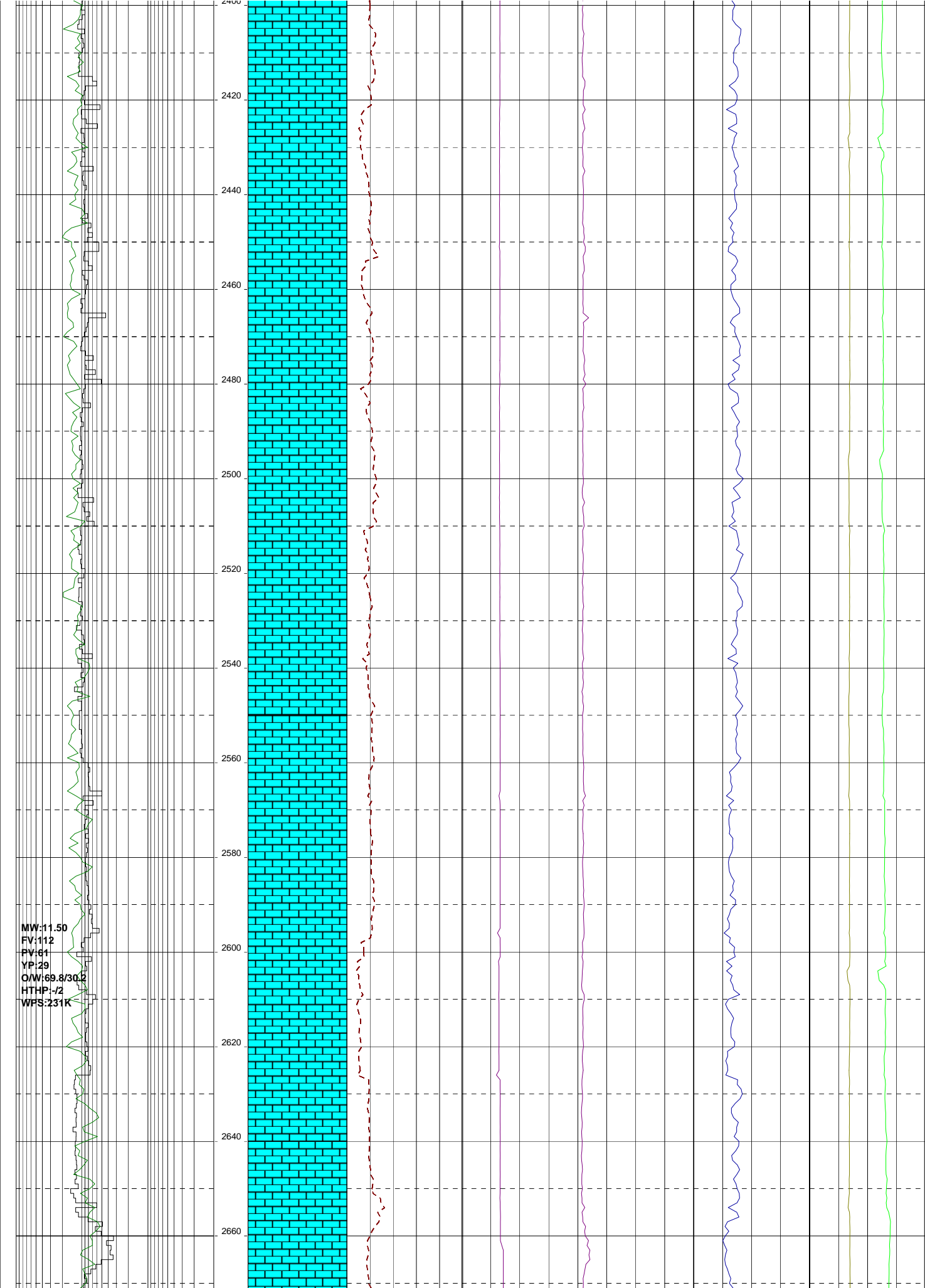


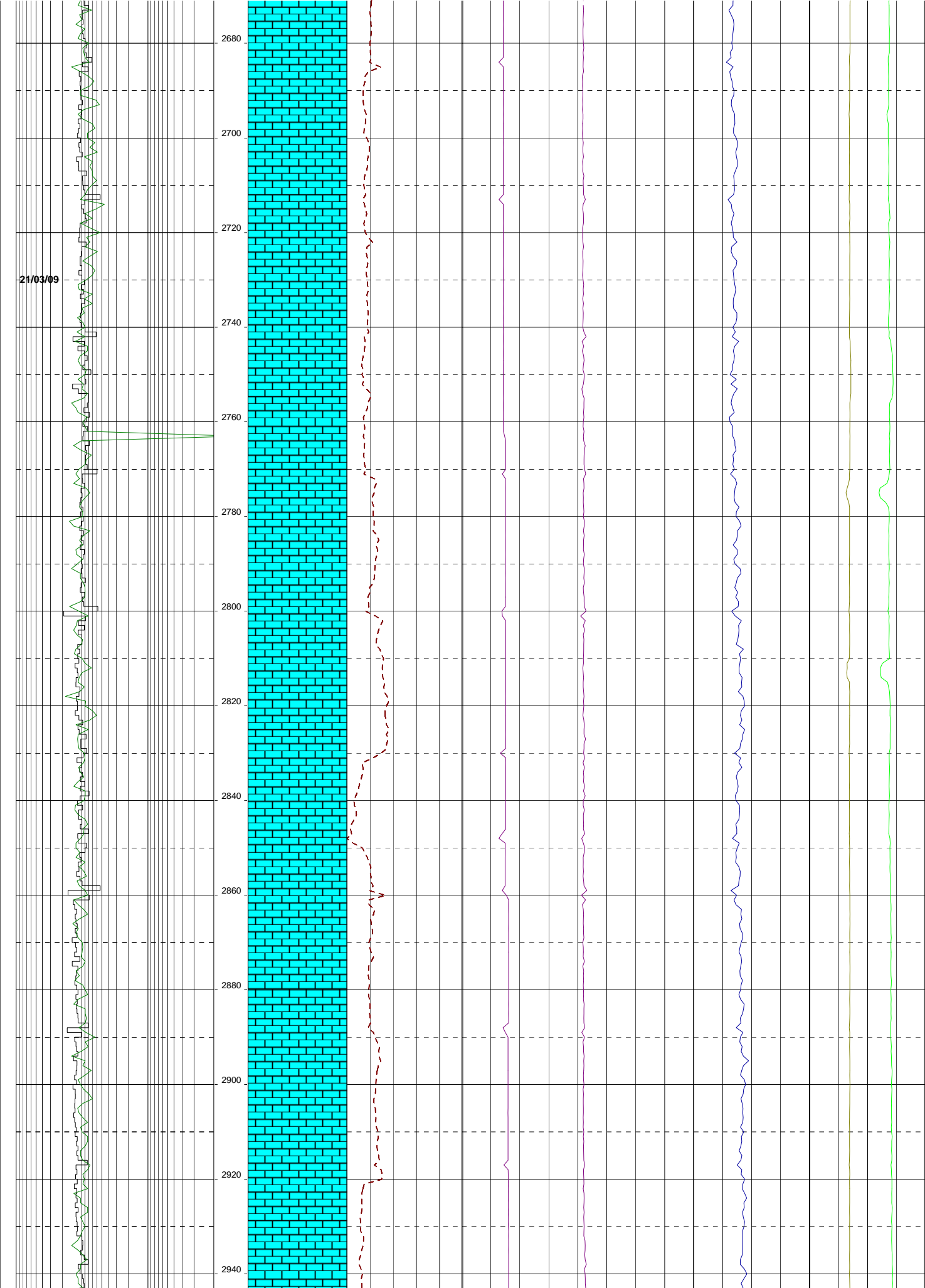
MW:11.45
FV:105
PV:62
YP:32
O/W:68.1/31.9
HTHP:-/2
WPS:224K

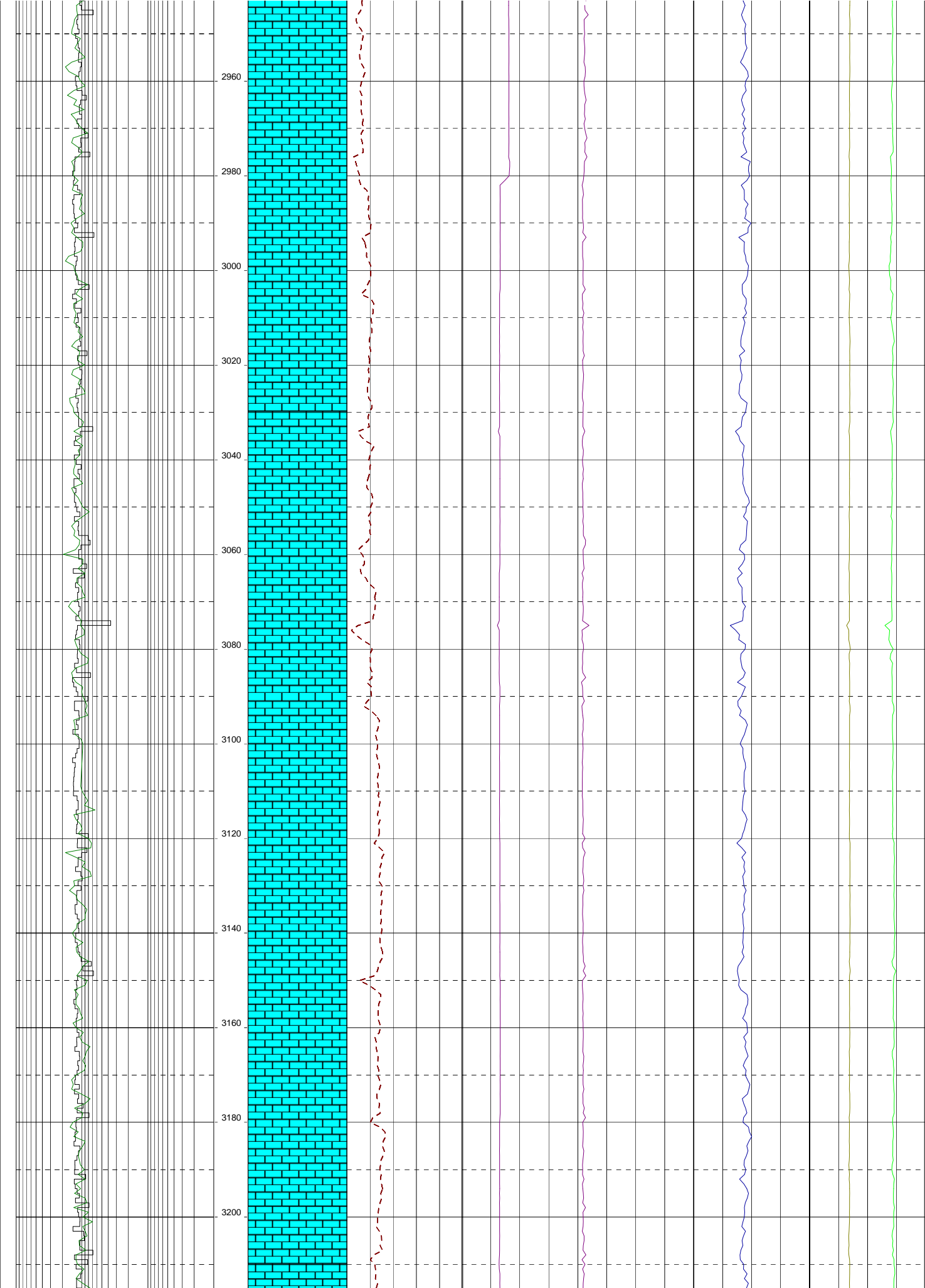
20/03/09

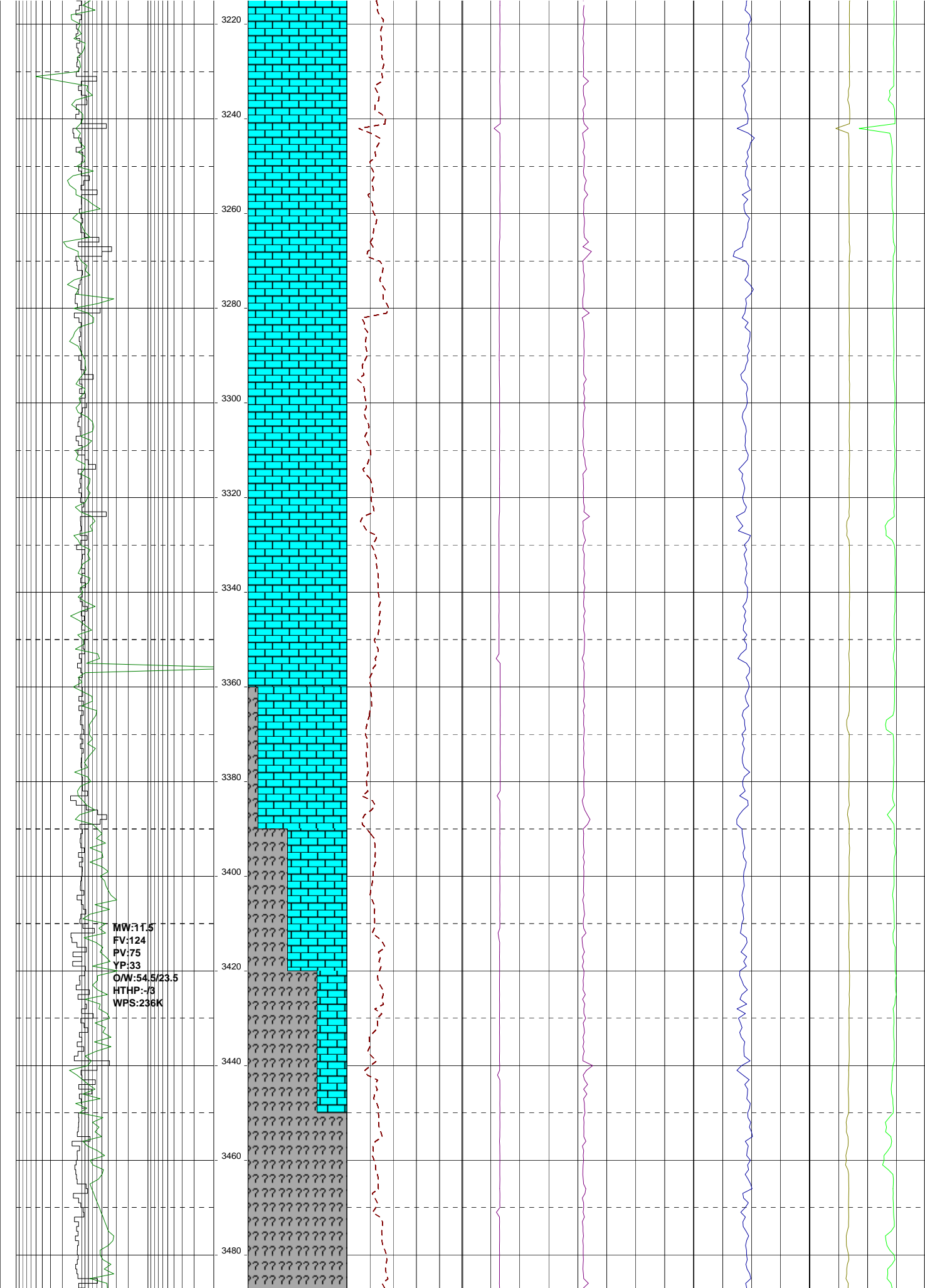












22/03/09

3500

3520

3540

3560

3580

3600

3620

3640

3660

3680

3700

MW:11.7
FV:135
PV:62
YP:36
O/W:54.5/22
HTHP-J2
WPS:248K

23/03/09

