



Company : ROC Oil

Well : Basker-7

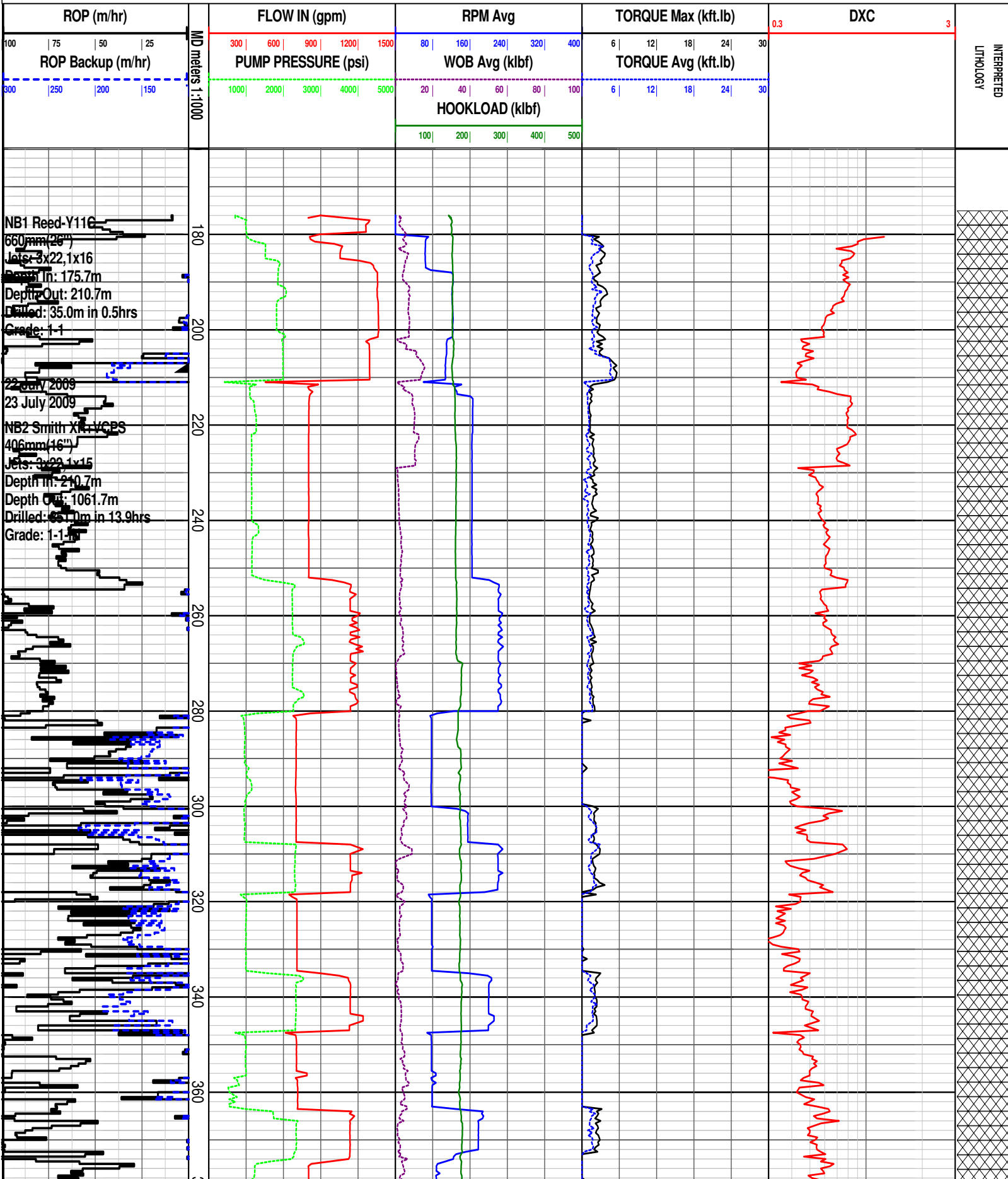
Interval : 162.00 - 2416.37 meters

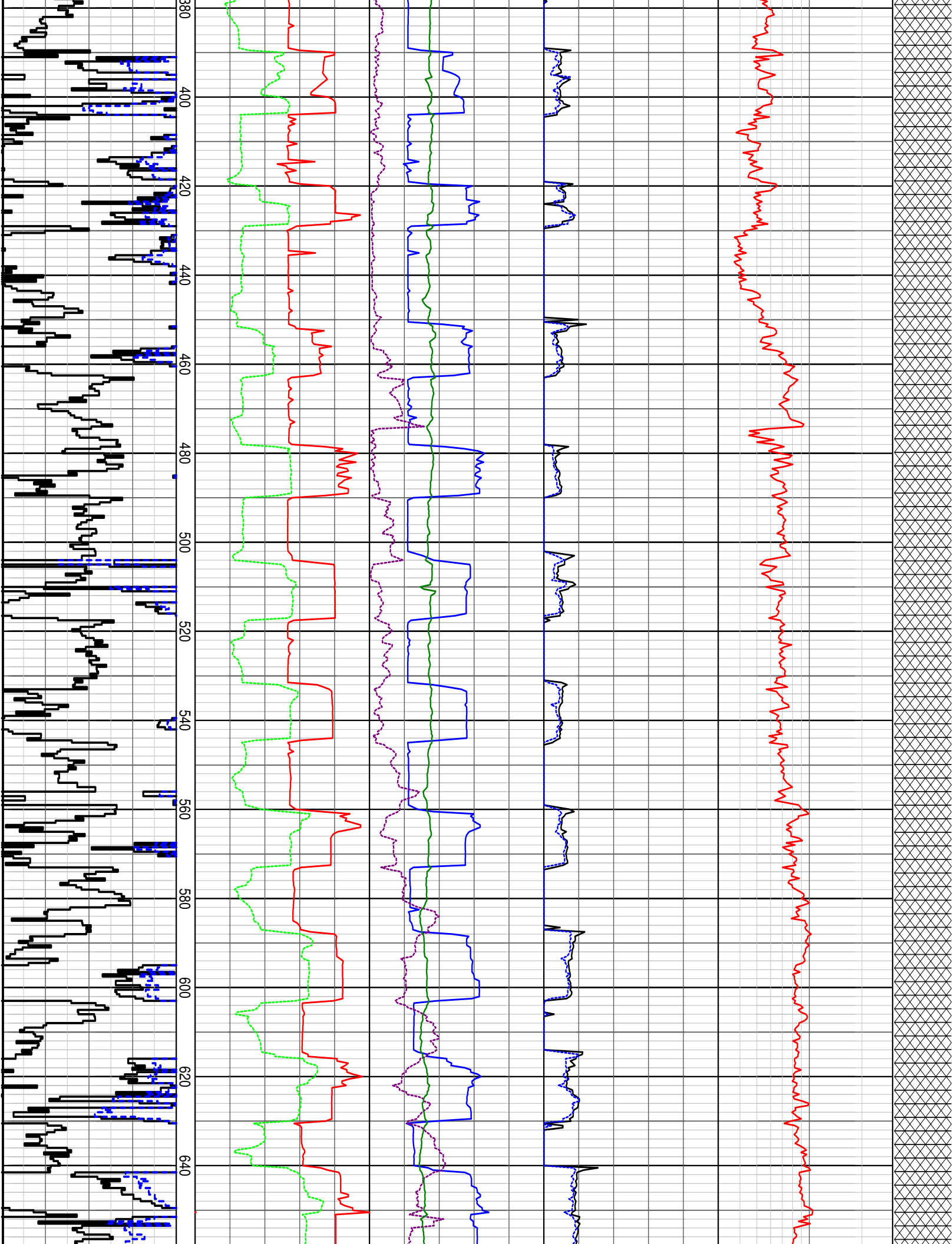
Created : 28/Jul/2009 5:15:05 AM

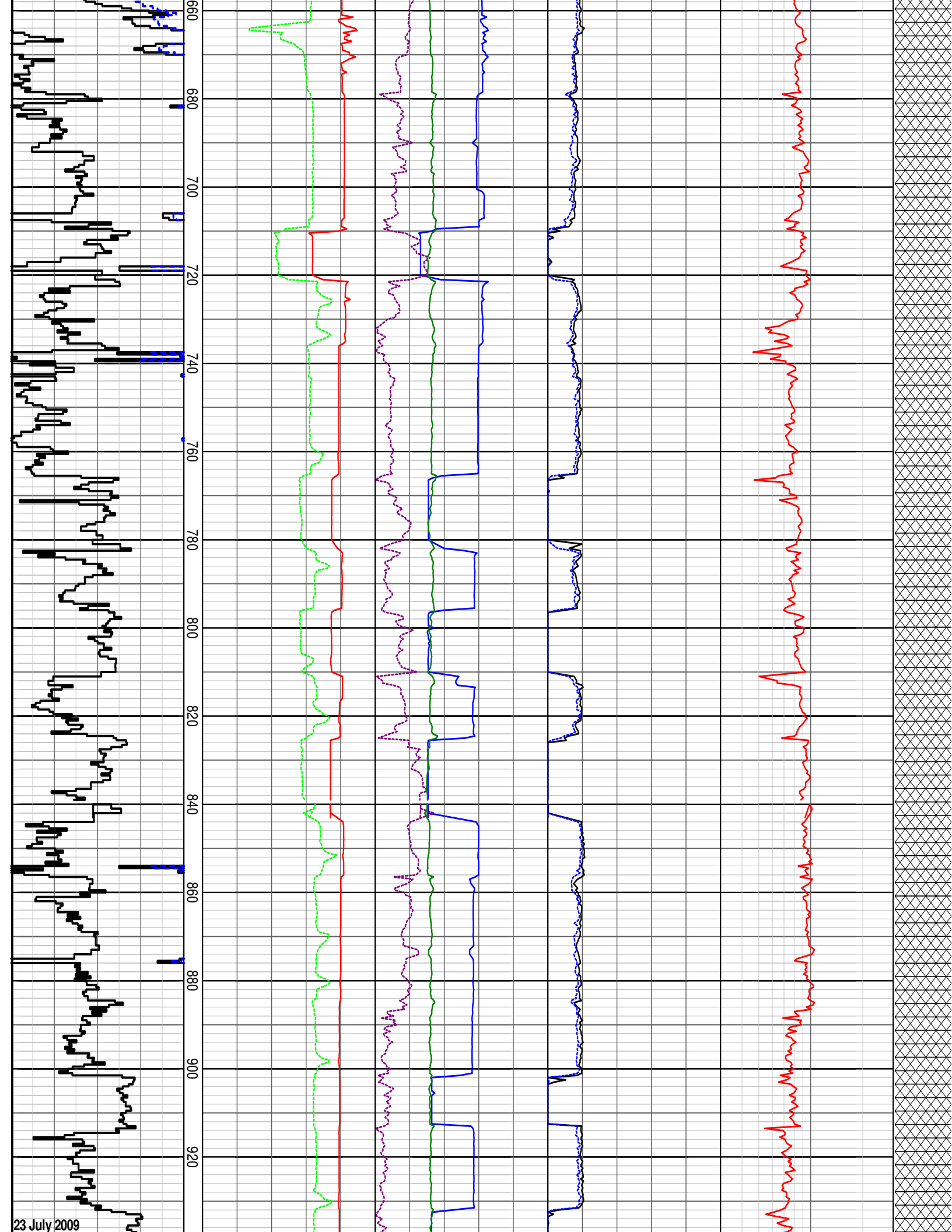


INTEQ

### DRILLING DATA PLOT



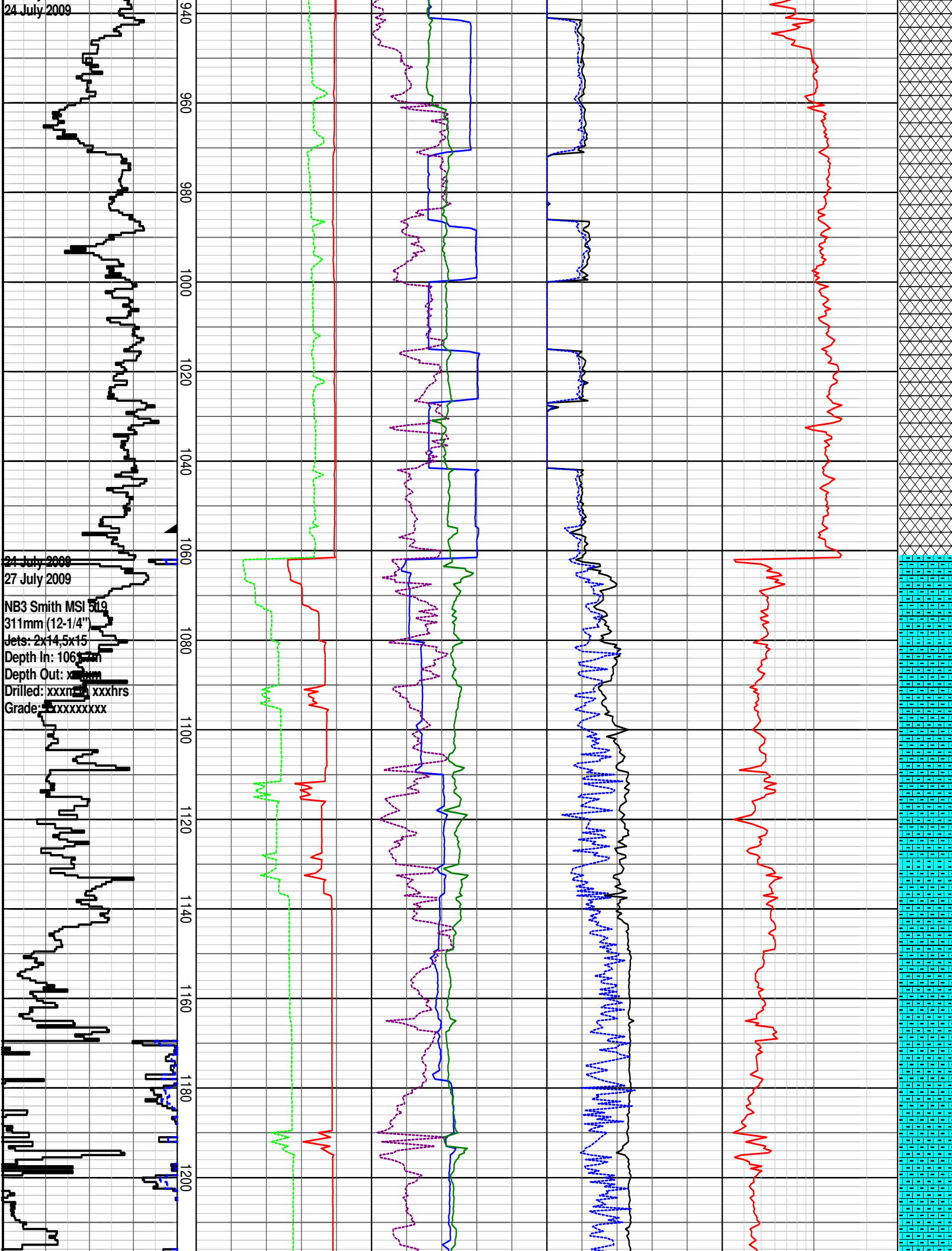


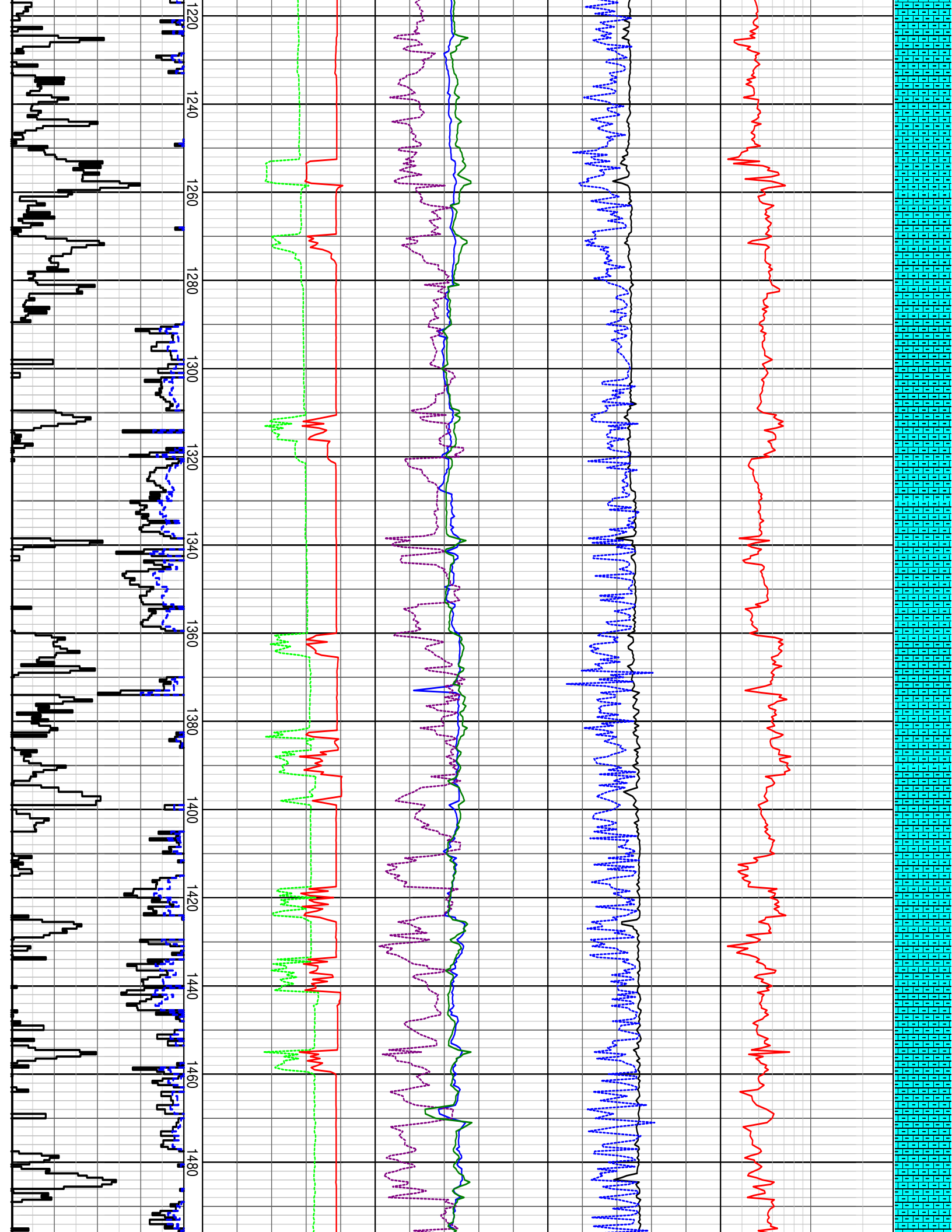


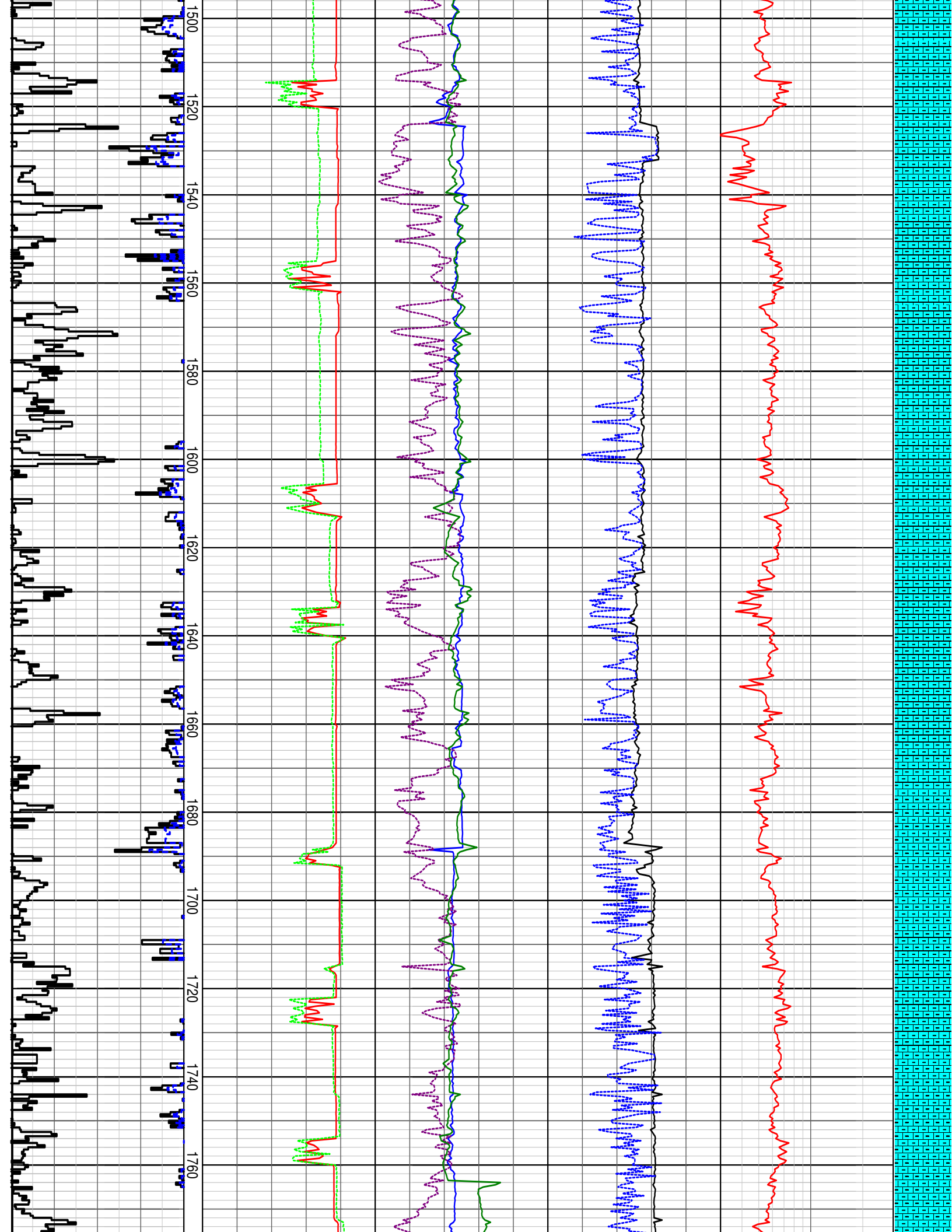
24 July 2009

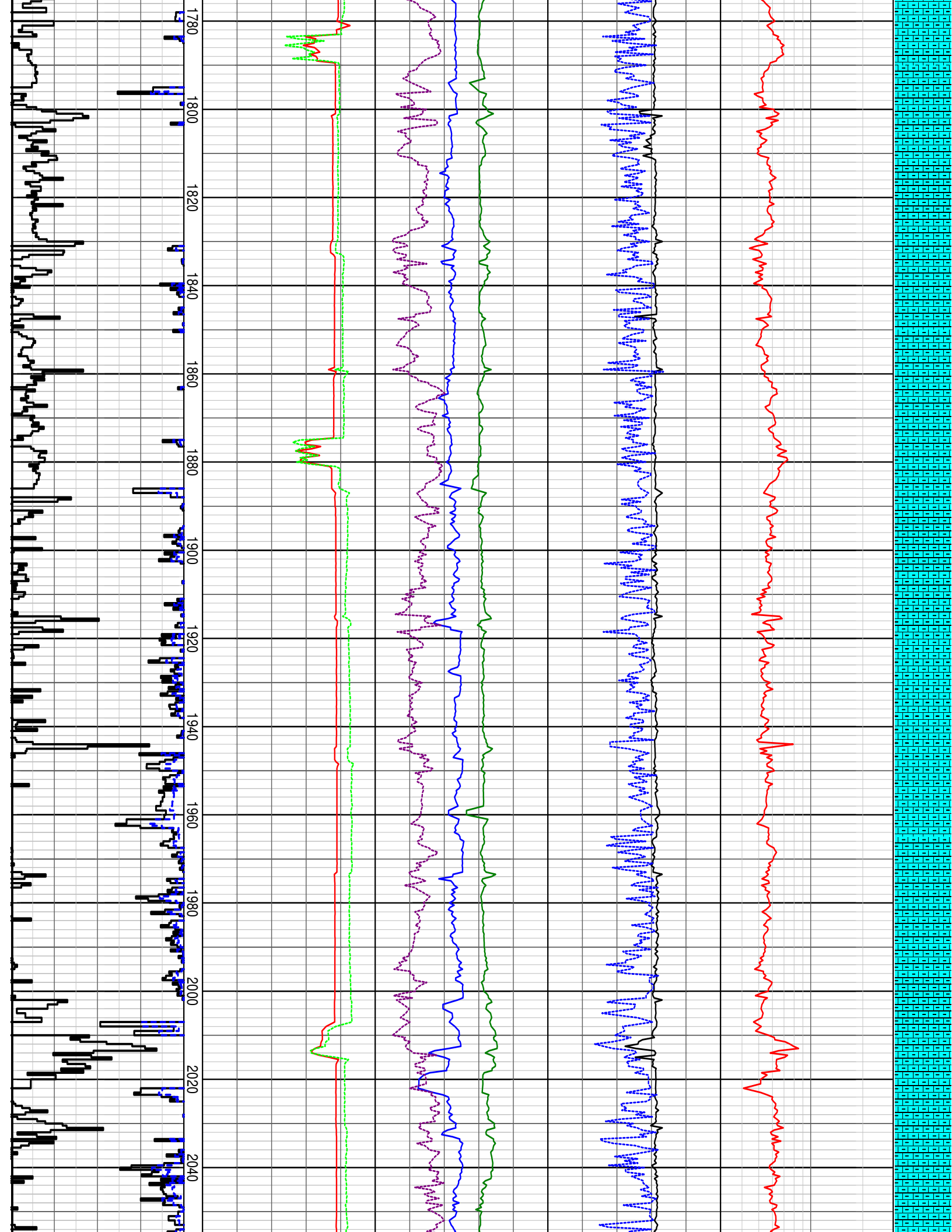
24 July 2009  
27 July 2009

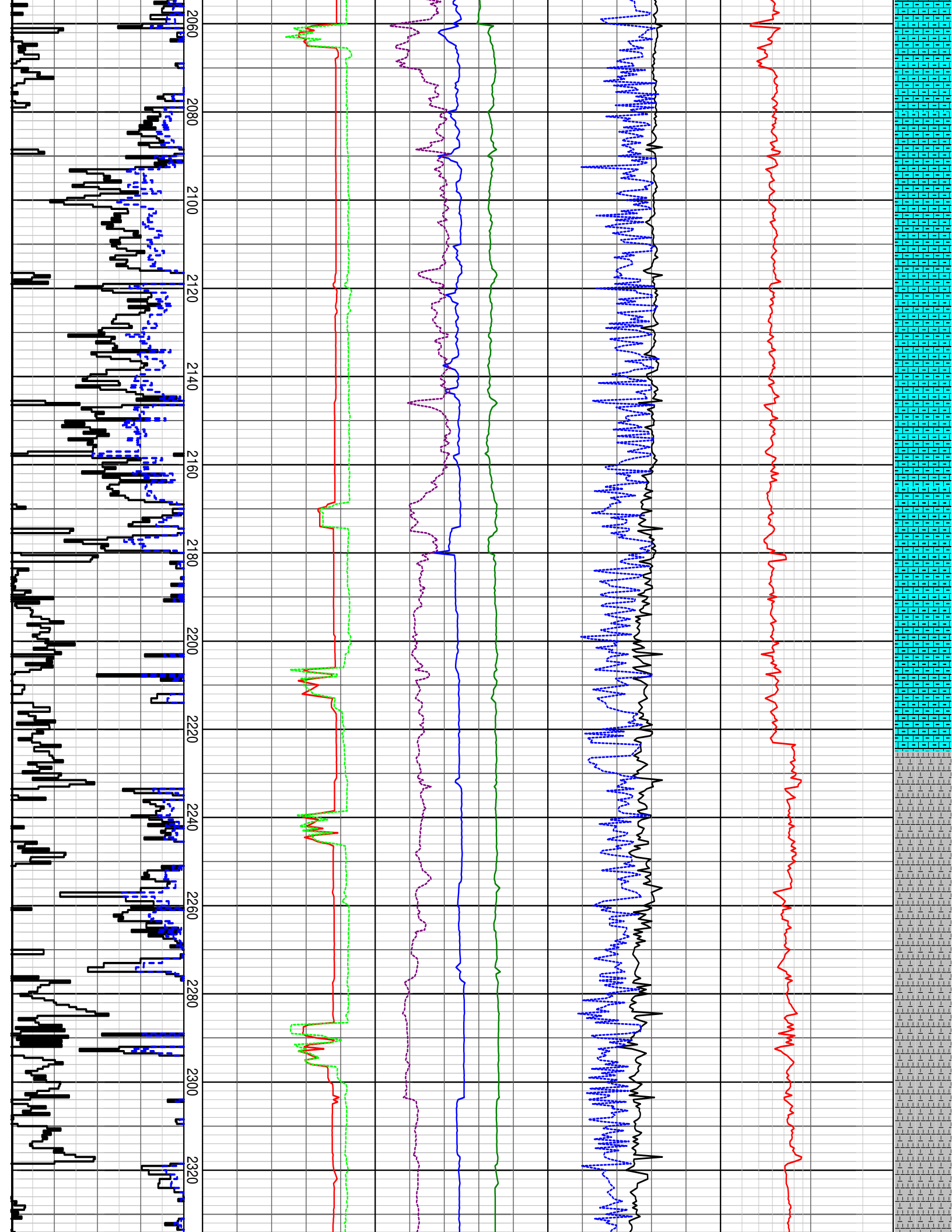
NB3 Smith MSI 519  
311mm (12-1/4")  
Jets: 2x14,5x15  
Depth In: 1061  
Depth Out: x  
Drilled: xxxn xxxhrs  
Grade: xxxxxxxx



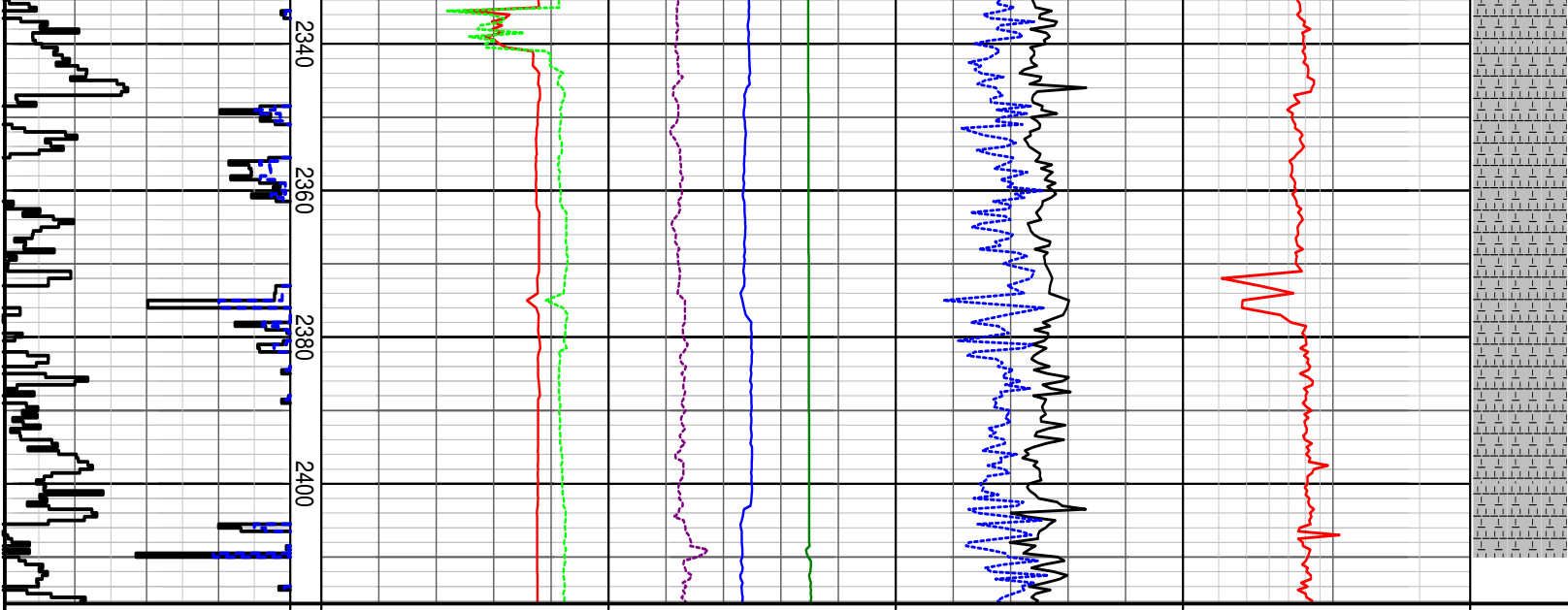












**DRILLING DATA PLOT**

<b>ROP (m/hr)</b> 100   75   50   25 <b>ROP Backup (m/hr)</b> 300   250   200   150	<b>FLOW IN (gpm)</b> 300   600   900   1200   1500 <b>PUMP PRESSURE (psi)</b> 1000   2000   3000   4000   5000	<b>RPM Avg</b> 80   160   240   320   400 <b>WOB Avg (klbf)</b> 20   40   60   80   100 <b>HOOKLOAD (klbf)</b> 100   200   300   400   500	<b>TORQUE Max (kft.lb)</b> 6   12   18   24   30 <b>TORQUE Avg (kft.lb)</b> 6   12   18   24   30	<b>DXC</b> 0.3   3	INTERPRETED LITHOLOGY
MD meters 1:1000					