

Schlumberger

VISION Resistivity

1:500 True Vertical Depth

Real Time Data

Company: ROC Oil

Well: Basker 7

Field: Gippsland Basin

Rig Name: Ocean Patriot

State: Victoria

Country: AUSTRALIA

Latitude: 38° 17' 58.78" S

Longitude: 148° 42' 22.31" E

Block:

FL: Gippsland Basin

FL1: VIC/L26

FL2:

Custom: 09ASQ0007

Rig Name: Ocean Patriot

Rig Type: Semi-Submersible

Log Measured From - Drill Floor: 21.5 m
Permanent Datum - Mean Sea Level



Casing Flange: 152.7 m

Ground Level: 154.2 m

Acquisition Dates: 26 Jul 09

Print Interval: 975.0(m) to 2267.0(m)

Index Types: Measured Depth, True Vertical Depth

Index Scales: 1:200, 1:500

Depth Source: Driller Depth

Depth Sensor: DES

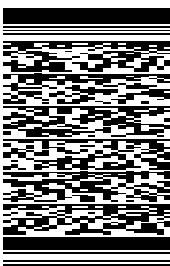
Conveyance: Drill Pipe

Print Type: Field

Spud Date:

Other Services:

Directional Surveys

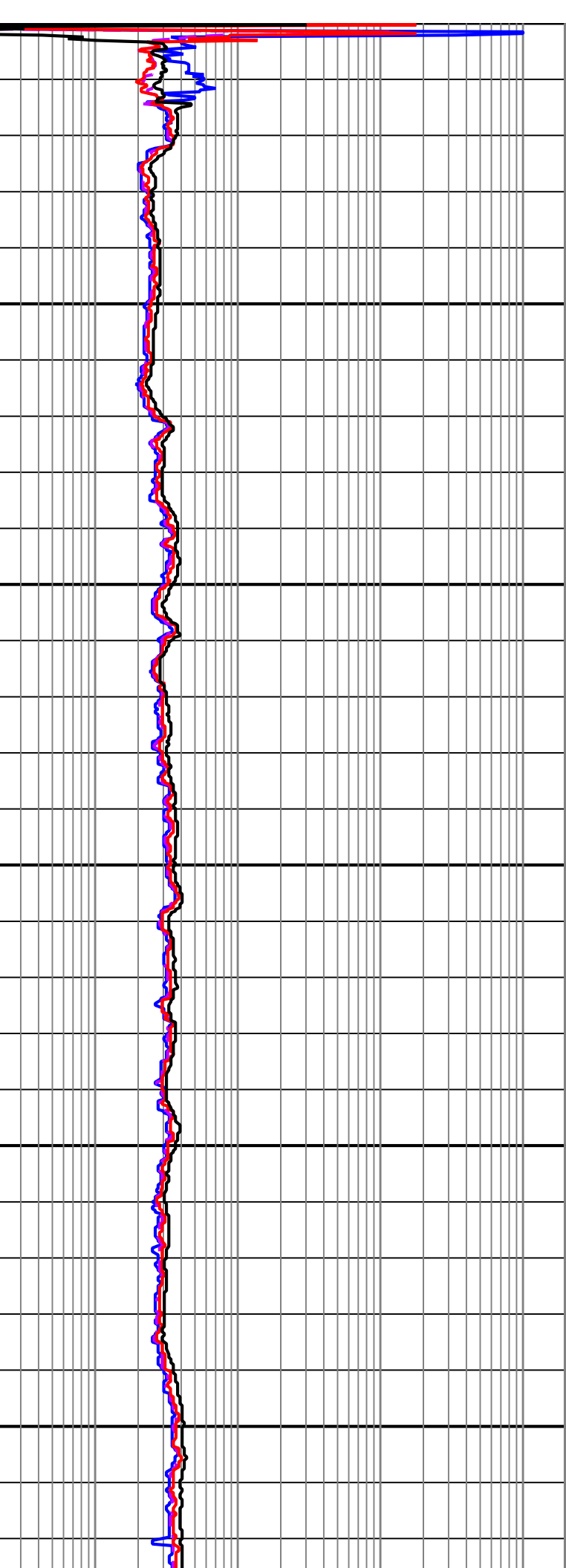
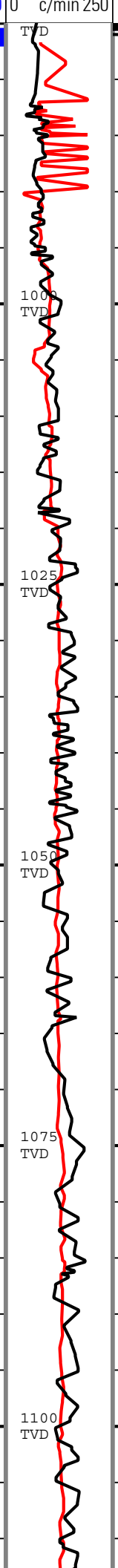
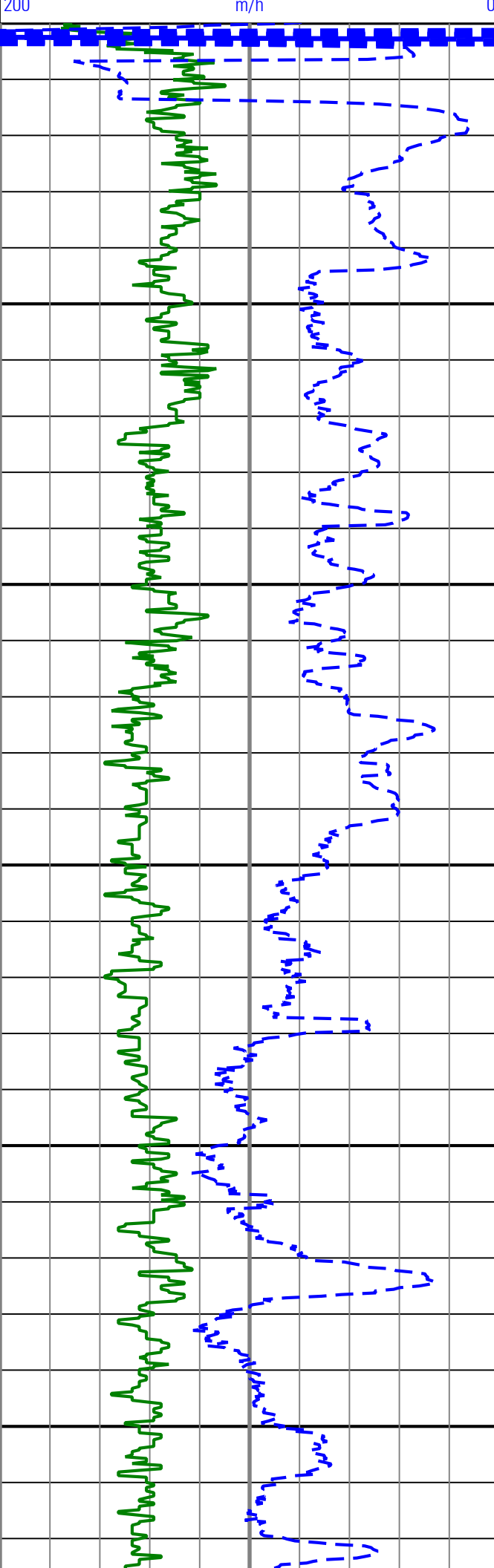


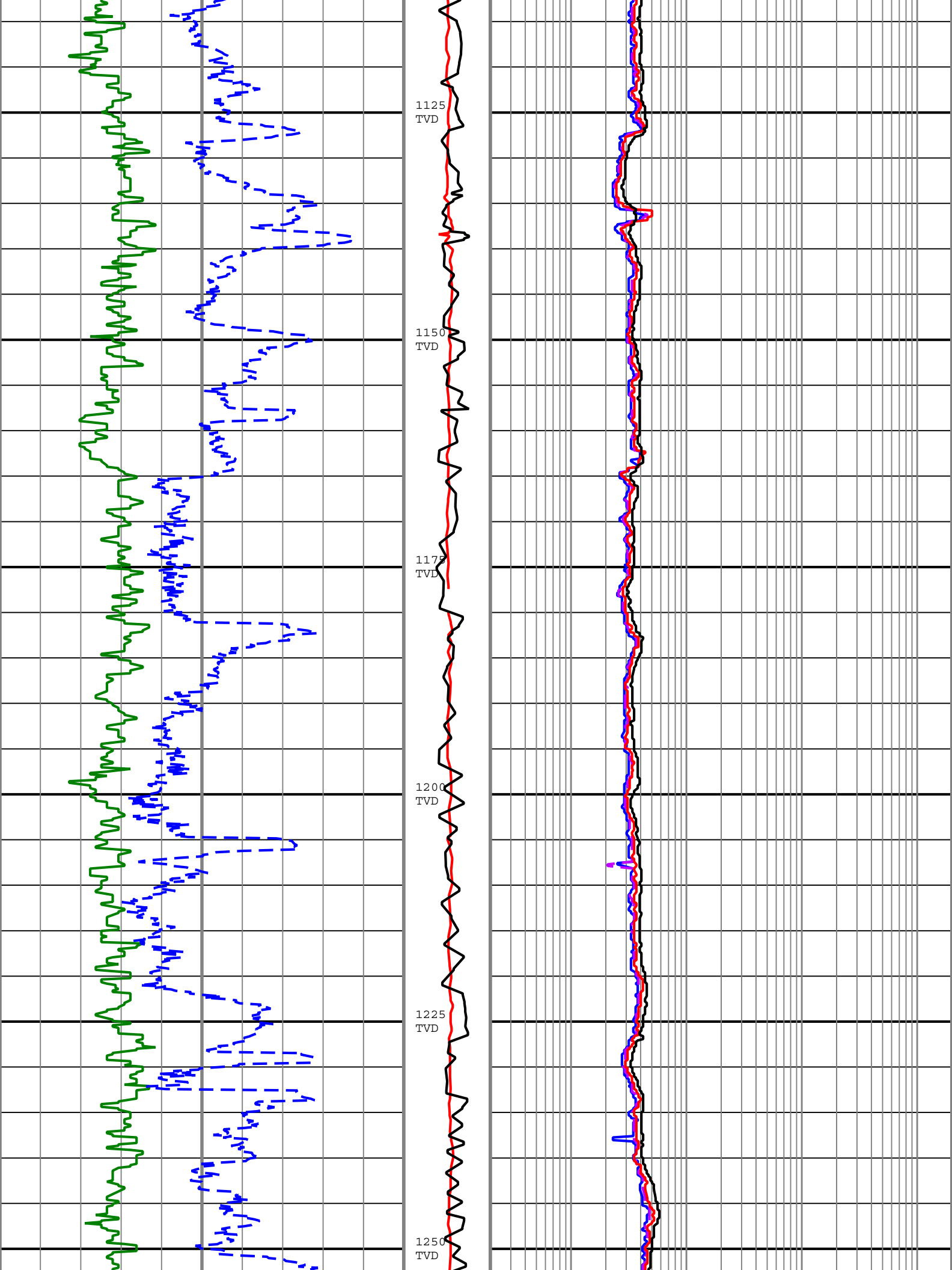
Disclaimer

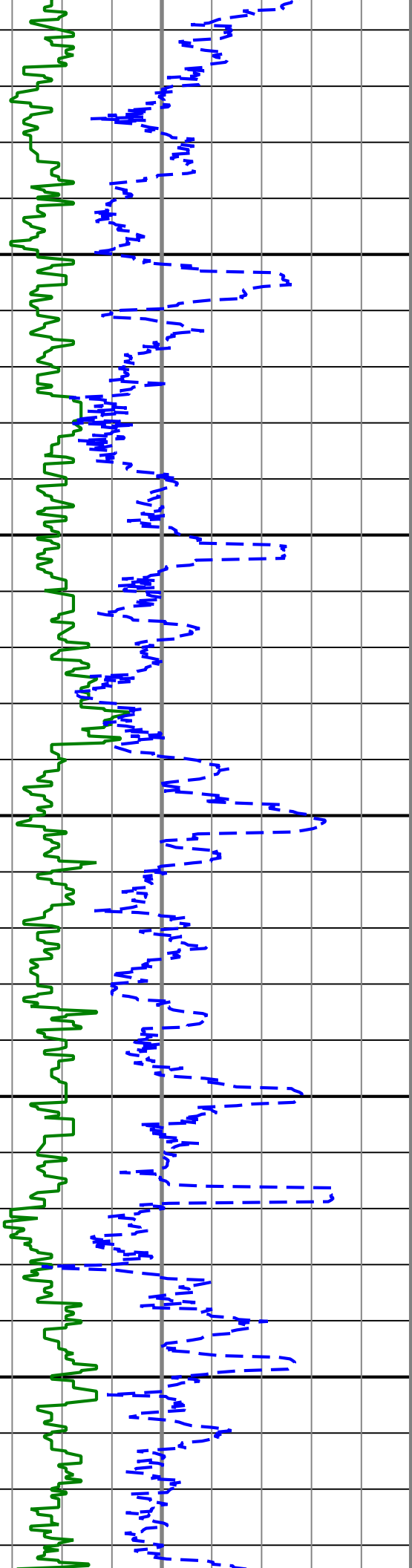
THE USE OF AND RELIANCE UPON THIS RECORDED-DATA BY THE HEREIN NAMED COMPANY (AND ANY OF ITS AFFILIATES, PARTNERS, REPRESENTATIVES, AGENTS, CONSULTANTS AND EMPLOYEES) IS SUBJECT TO THE TERMS AND CONDITIONS AGREED UPON BETWEEN SCHLUMBERGER AND THE COMPANY, INCLUDING: (a) RESTRICTIONS ON USE OF THE RECORDED-DATA; (b) DISCLAIMERS AND WAIVERS OF WARRANTIES AND REPRESENTATIONS REGARDING COMPANY'S USE AND RELIANCE UPON THE RECORDED-DATA; AND (c) CUSTOMER'S FULL AND SOLE RESPONSIBILITY FOR ANY INFERENCE DRAWN OR DECISION MADE IN CONNECTION WITH THE USE OF THIS RECORDED-DATA.

Contents

1. Header
2. Disclaimer
3. Contents
4. Run 3
 - 4.1 Software Version
 - 4.2 Pass Summary
 - 4.3 Log (TVD RT RES-GR Depth)
 - 4.4 Parameter Listing
5. Tail







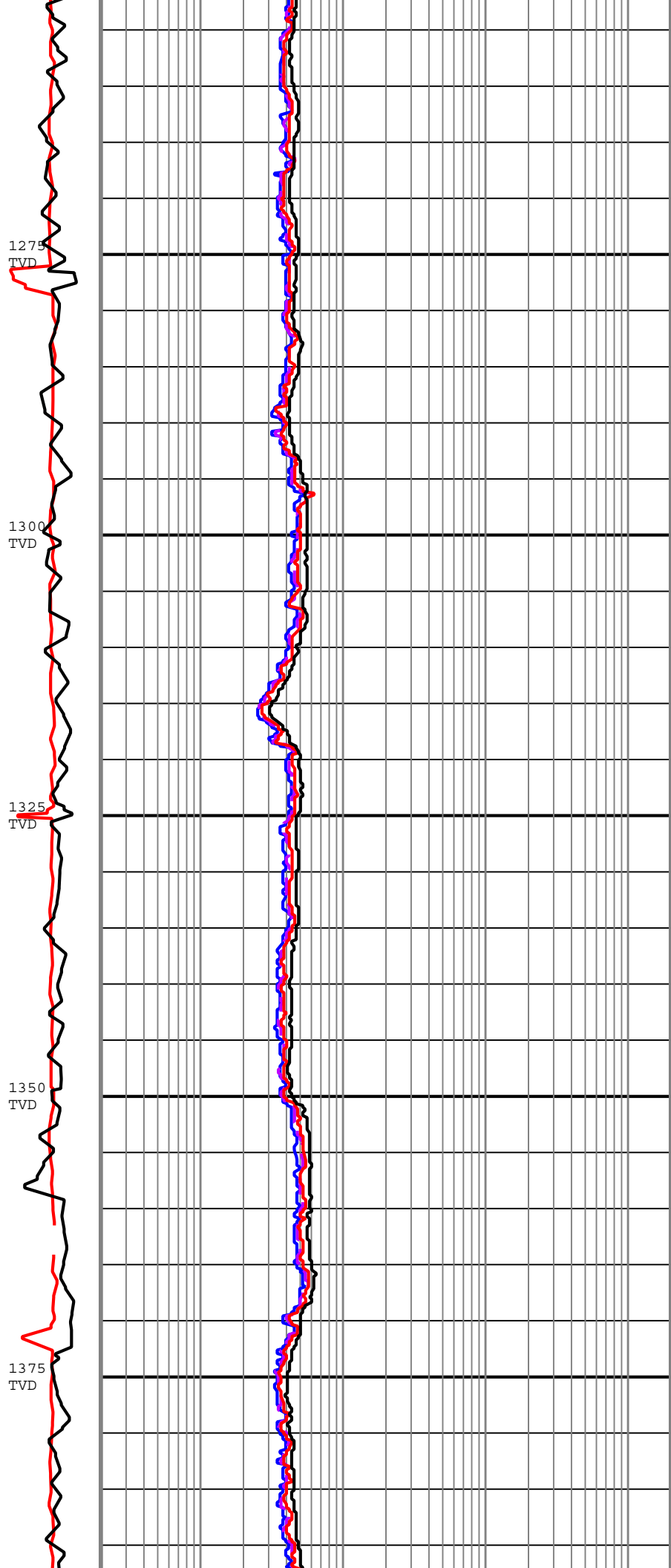
1275
TVD

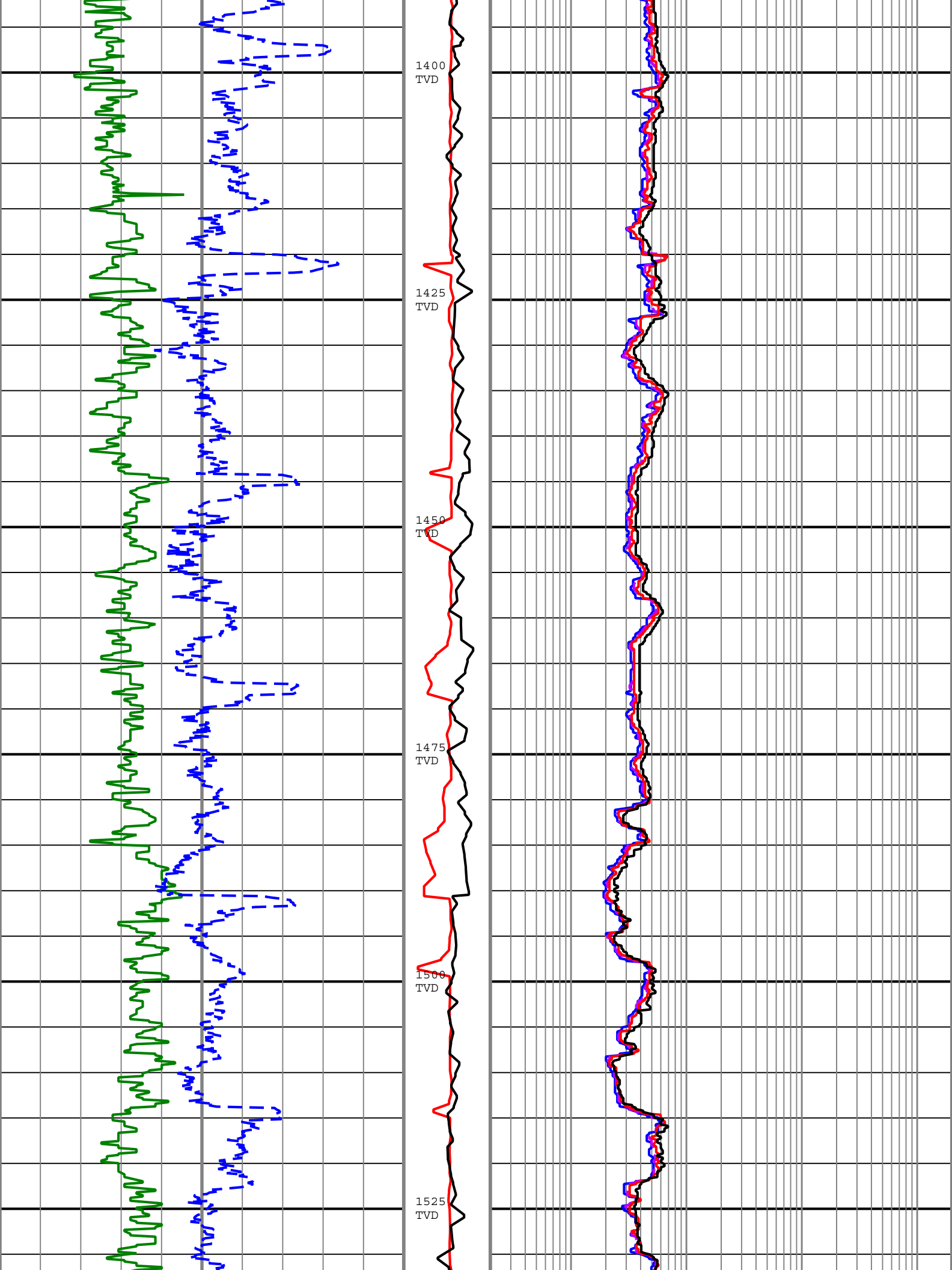
1300
TVD

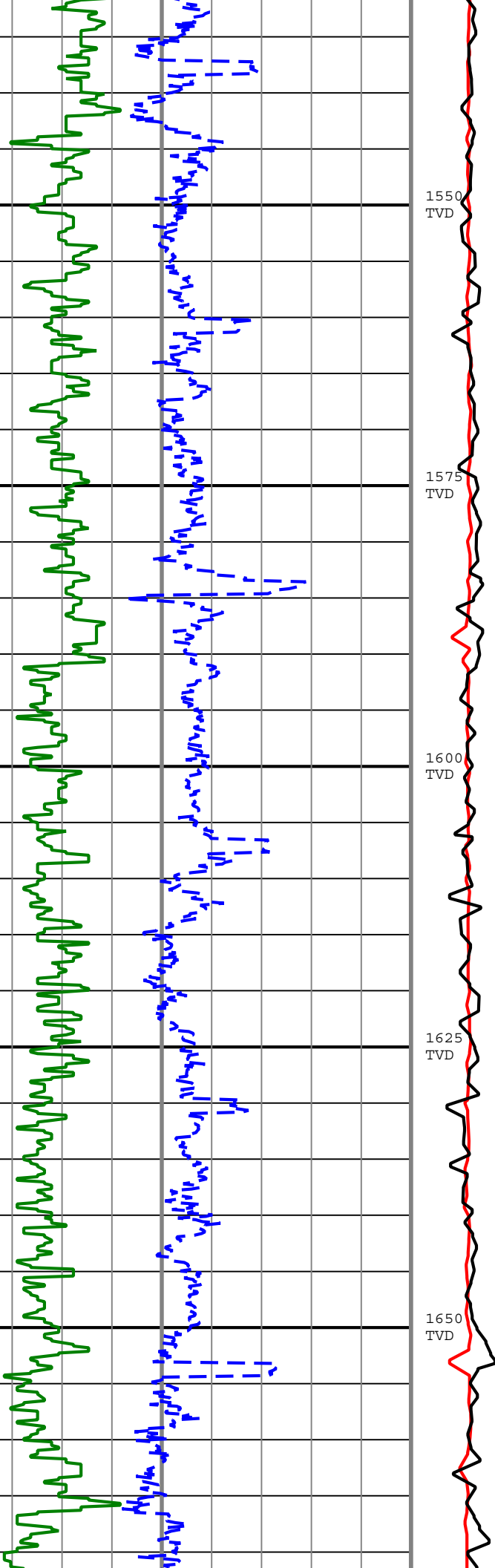
1325
TVD

1350
TVD

1375
TVD







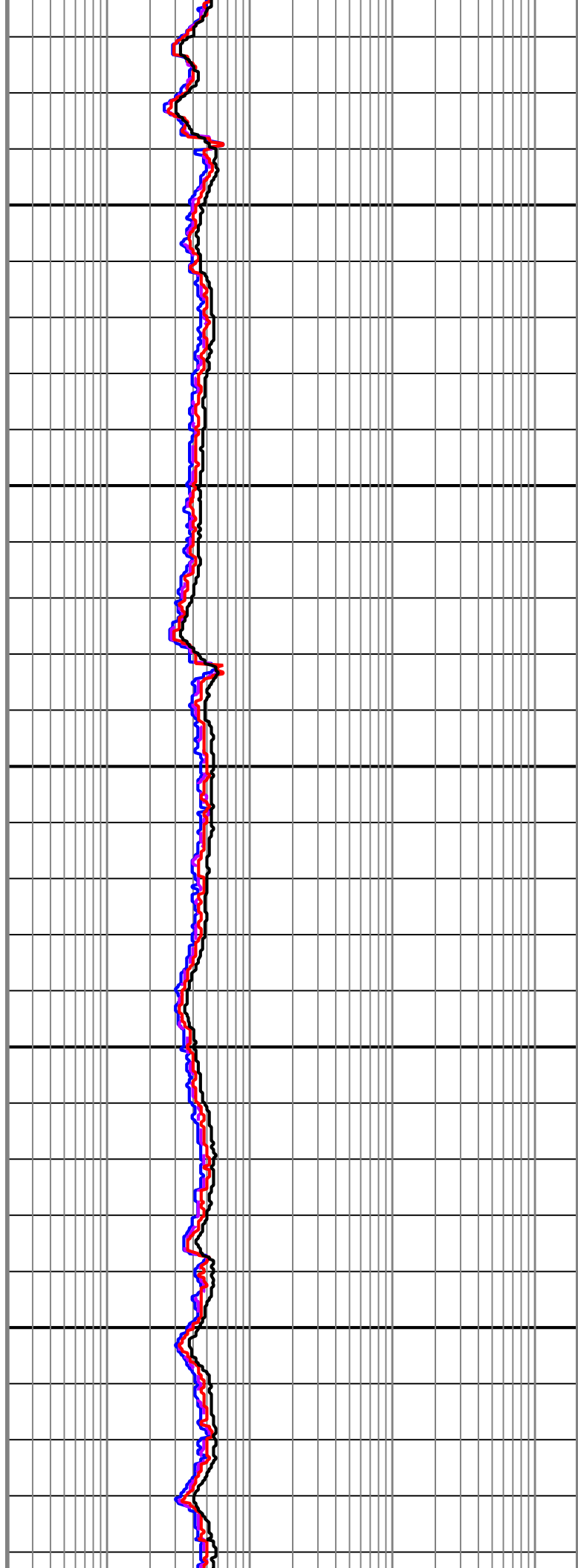
1550
TVD

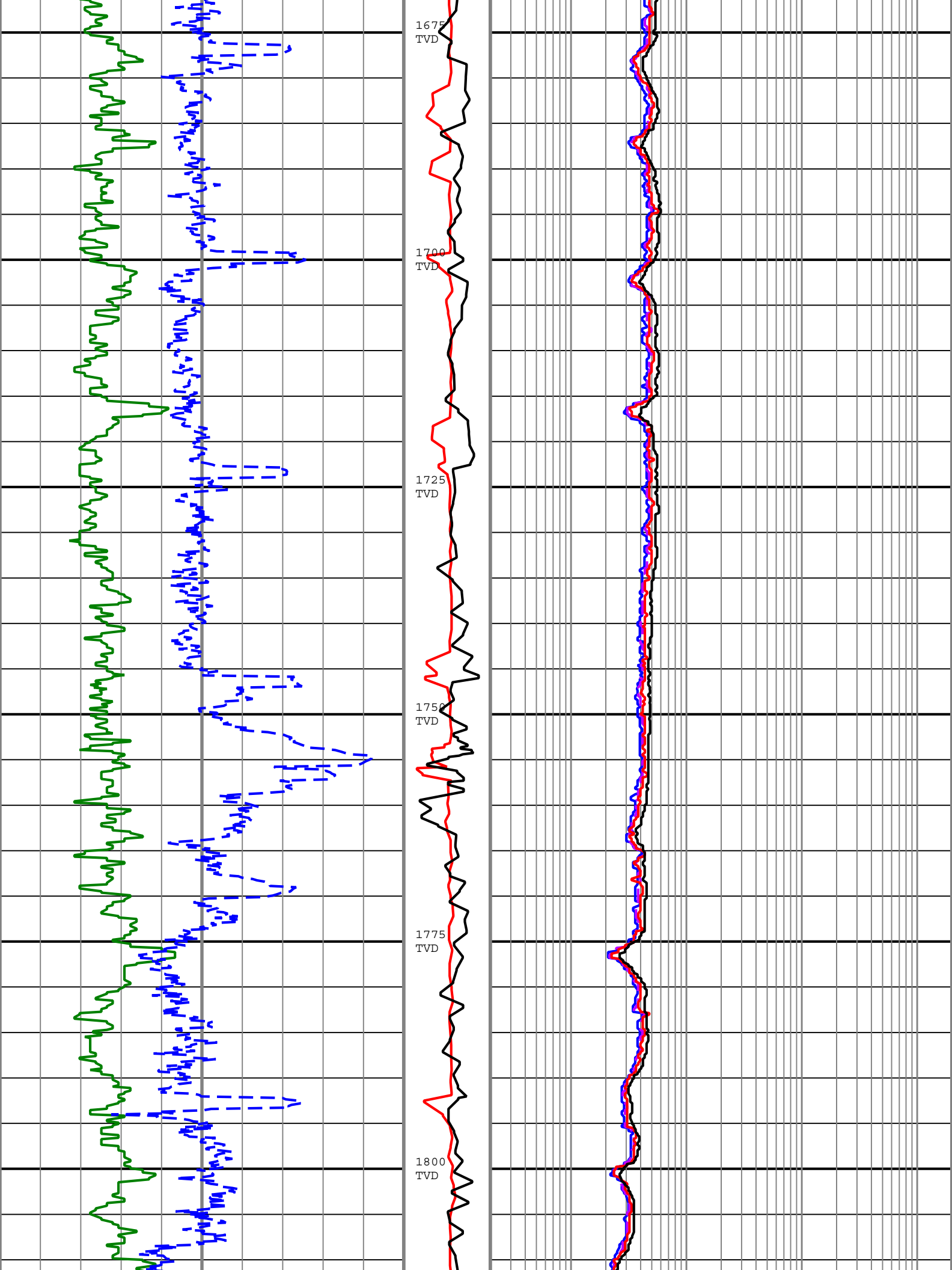
1575
TVD

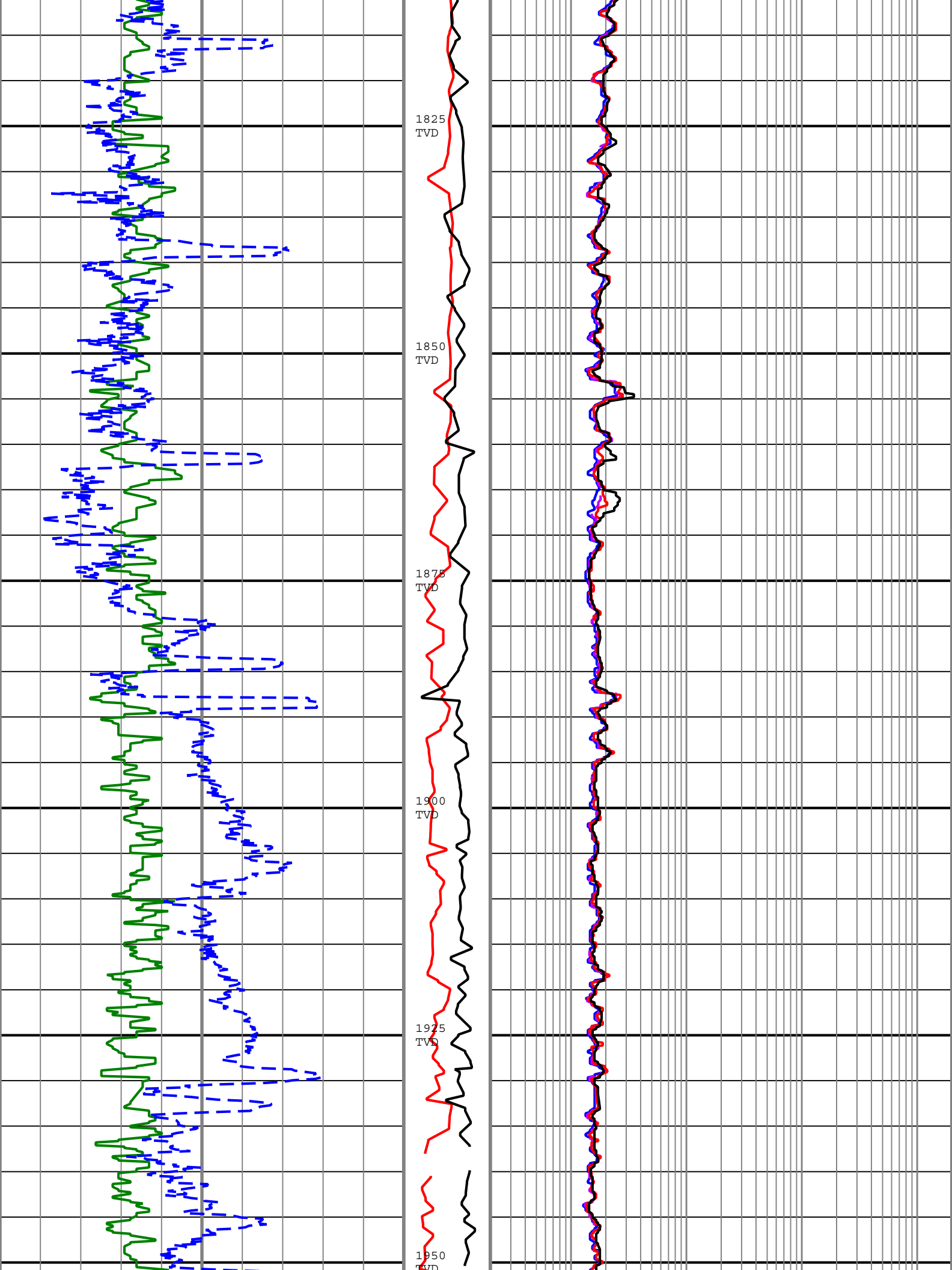
1600
TVD

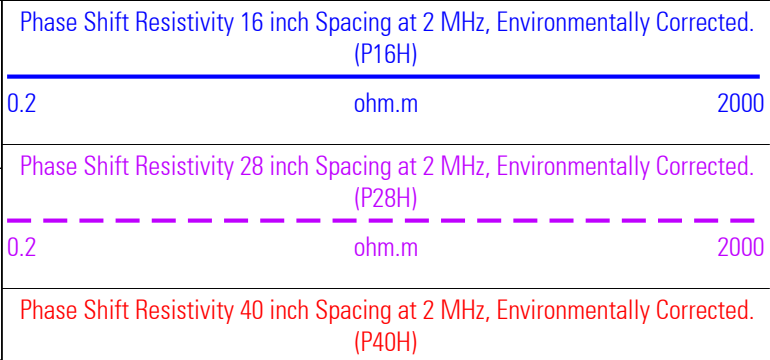
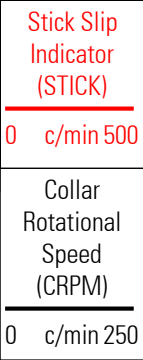
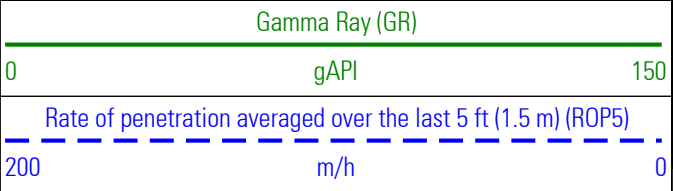
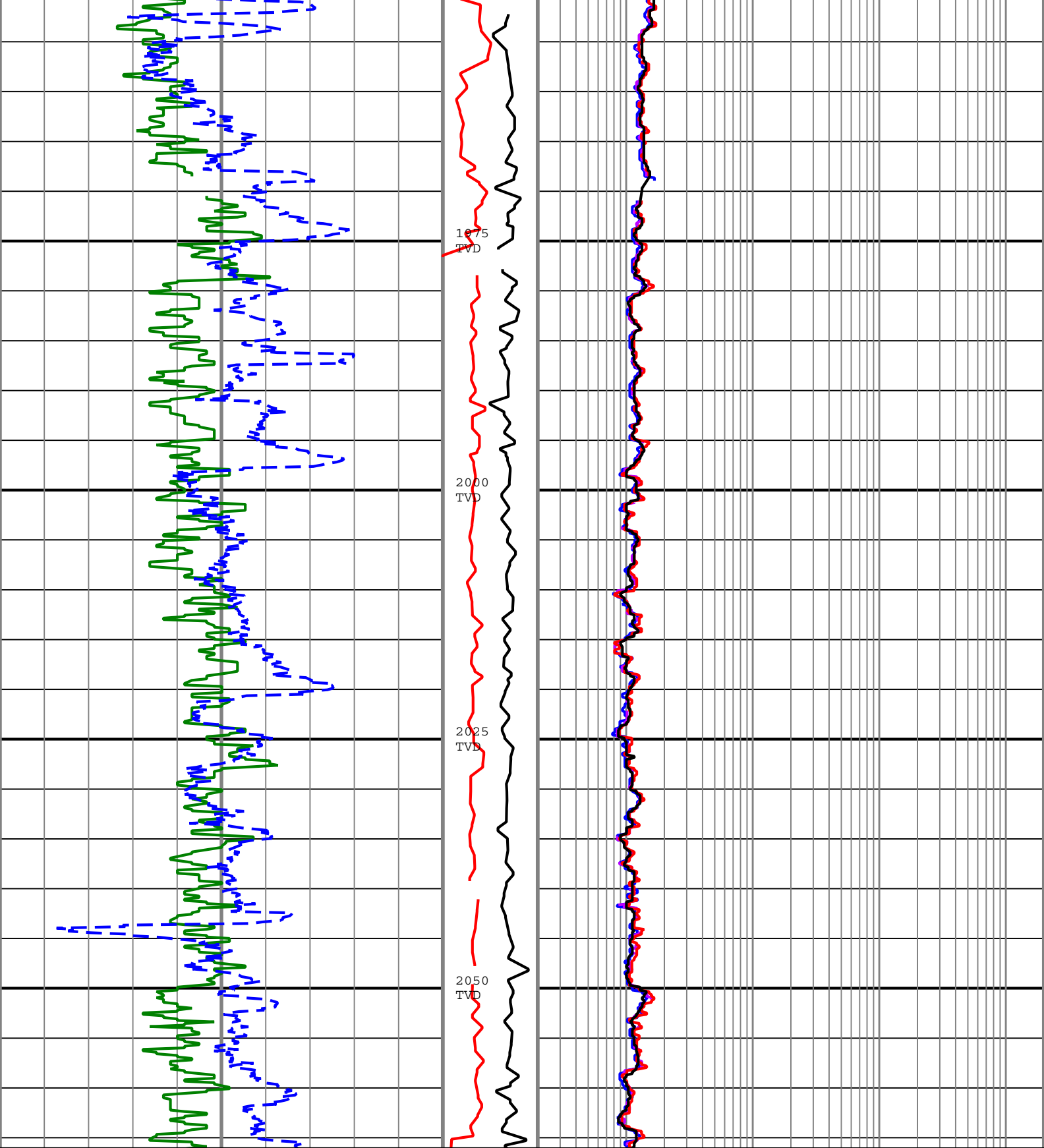
1625
TVD

1650
TVD









0.2

ohm.m

2000

Attenuation Resistivity 40 inch Spacing at 2 MHz, Environmentally Corrected.
(A40H)

0.2

ohm.m

2000

Description: ARC Blended Resistivity RT Format: Log (TVD RT RES-GR Depth) Index Scale: 1:500 Index Unit: m Index Type: TVD Creation Date: 28-Jul-2009 04:23:15

Channel Processing Parameters

Parameter	Description	ToolPath	Value	Unit
BHK	Drilling Fluid Potassium Concentration	Borehole	4.94	%
BHT	Bottom Hole Temperature	Borehole	39	degC
BS	Bit Size	COMPLETION	Depth Zoned	in
DFD	Drilling Fluid Density	Borehole	1.09	g/cm3
DFT	Drilling Fluid Type	Borehole	Water	
GGRD	Geothermal Gradient	Borehole	18.23	degC/km
GRSE	Generalized Mud Resistivity Selection	Borehole	Computed (GEN-9)	
GTSE	Generalized Temperature Selection	Borehole	Gradient From Surface	
MST	Mud Sample Temperature	Borehole	Time Zoned	degC
RMS	Resistivity of Mud Sample	Borehole	Time Zoned	ohm.m
SHT	Surface Hole Temperature	Borehole	20	degC
TD	Total Measured Depth	Borehole	3000	m

Depth Zone Parameters

Parameter	Value	Start (m)	Stop (m)
BS	16	975	981.03
BS	12.25	981.03	

All depth are actual.

Time Zone Parameters

Parameter	Value	Start Time	Stop Time	Start Depth (m)	Stop Depth (m)
MST	20	26-Jul-2009 15:32:43	28-Jul-2009 02:09:39	1027.73	1994.93
MST	21	28-Jul-2009 02:09:39		1994.93	
RMS	0.074	26-Jul-2009 15:32:43	28-Jul-2009 02:09:39	1027.73	1994.93
RMS	0.099	28-Jul-2009 02:09:39		1994.93	

All depth are at tool zero.

Tool Control Parameters

Parameter	Description	ToolPath	Value	Unit
OFFBTM_TH	Threshold for deciding whether the bit is off bottom	DnMWorkflow	Time Zoned	m

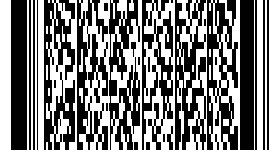
Time Zone Parameters

Parameter	Value	Start Time	Stop Time	Start Depth (m)	Stop Depth (m)
OFFBTM_TH	0.5	26-Jul-2009 15:32:43	27-Jul-2009 01:39:30	1027.73	1028.91
OFFBTM_TH	0.55	27-Jul-2009 01:39:30		1028.91	

All depth are at tool zero.

Company: ROC Oil**Well:** Basker 7**Field:** Gippsland Basin**Dis Name:** Ocean District

Rig Name: Ocean Patriot
State: Victoria
Country: AUSTRALIA



Schlumberger

VISION Resistivity
1:500 True Vertical Depth
Real Time Data