

Schlumberger

VISION Resistivity

1:200 Measured Depth

Real Time Data

Company: ROC Oil

Well: Basker 7

Field: Gippsland Basin

Rig Name: Ocean Patriot

State: Victoria

Country: AUSTRALIA

Latitude: 38° 17' 58.78" S

Longitude: 148° 42' 22.31" E

Block:

FL: Gippsland Basin

FL1: VIC/L26

FL2:

Custom: 09ASQ0007

Rig Name: Ocean Patriot

Rig Type: Semi-Submersible

Log Measured From - Drill Floor: 21.5 m
Permanent Datum - Mean Sea Level



Casing Flange: 152.7 m

Ground Level: 154.2 m

Acquisition Dates: 26 Jul 09

Print Interval: 1050.0(m) to 1300.0(m)

Index Types: Measured Depth

Index Scales: 1:200

Depth Source: Driller Depth

Depth Sensor: DES

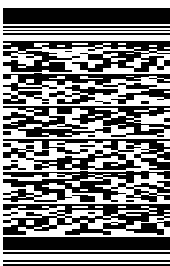
Conveyance: Drill Pipe

Print Type: Field

Spud Date:

Other Services:

Directional Surveys

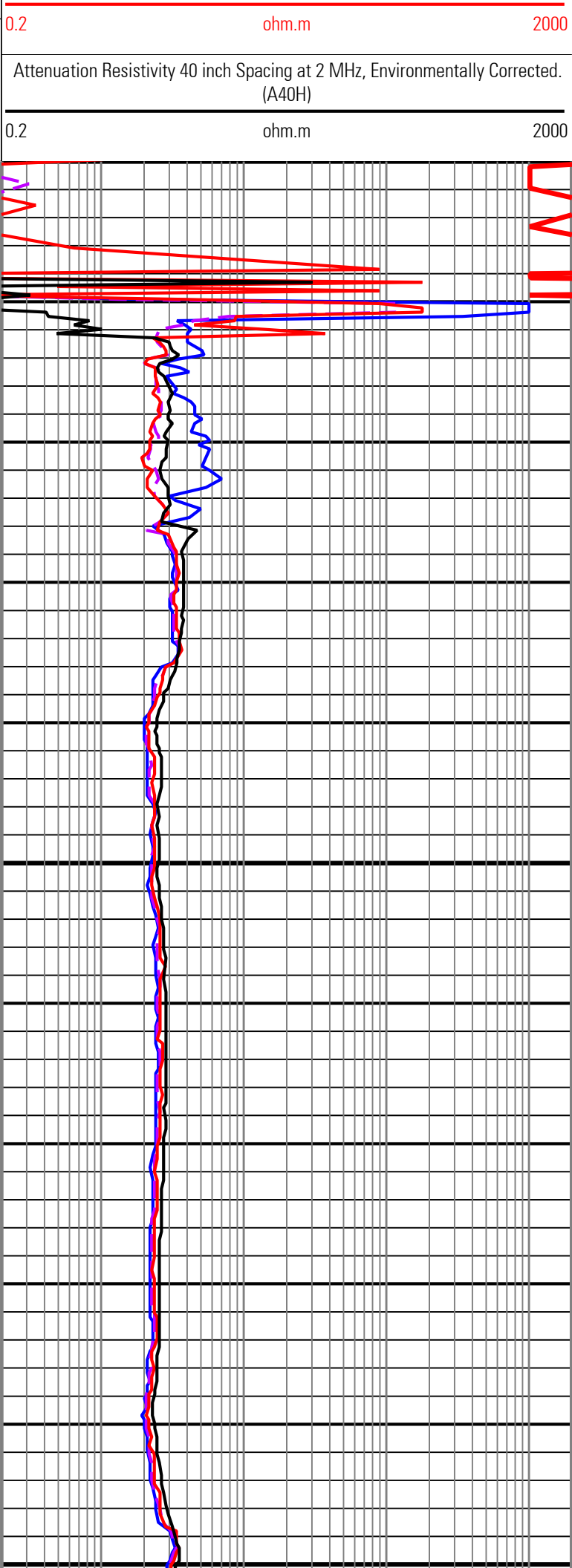
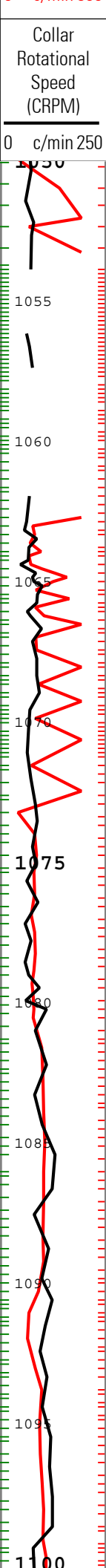
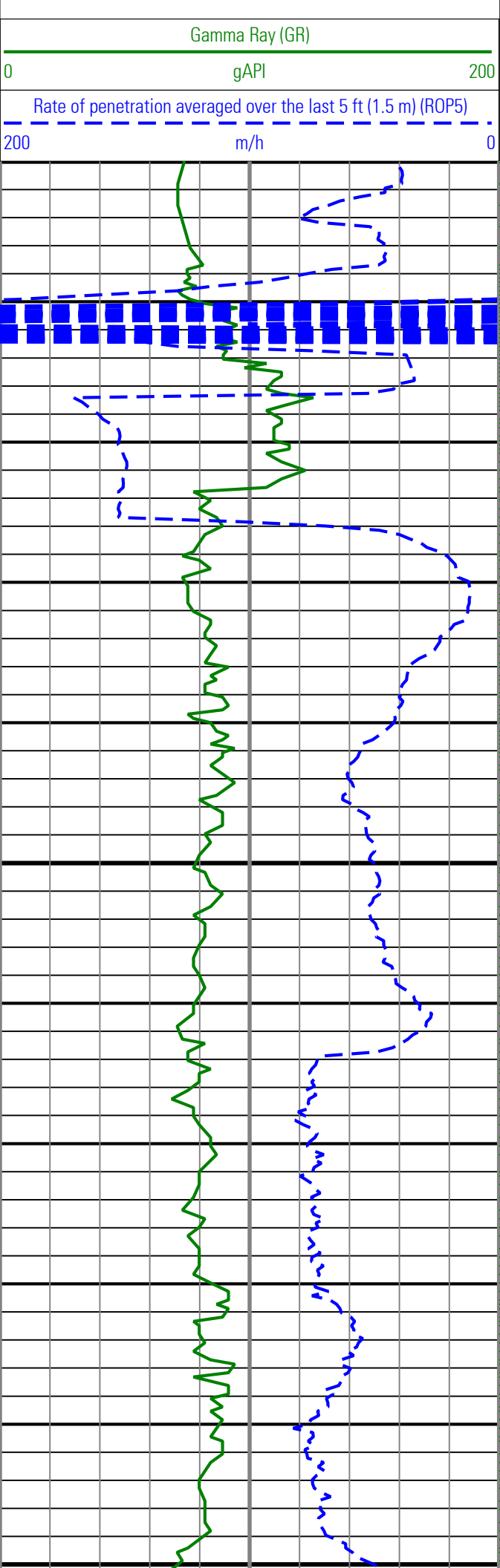


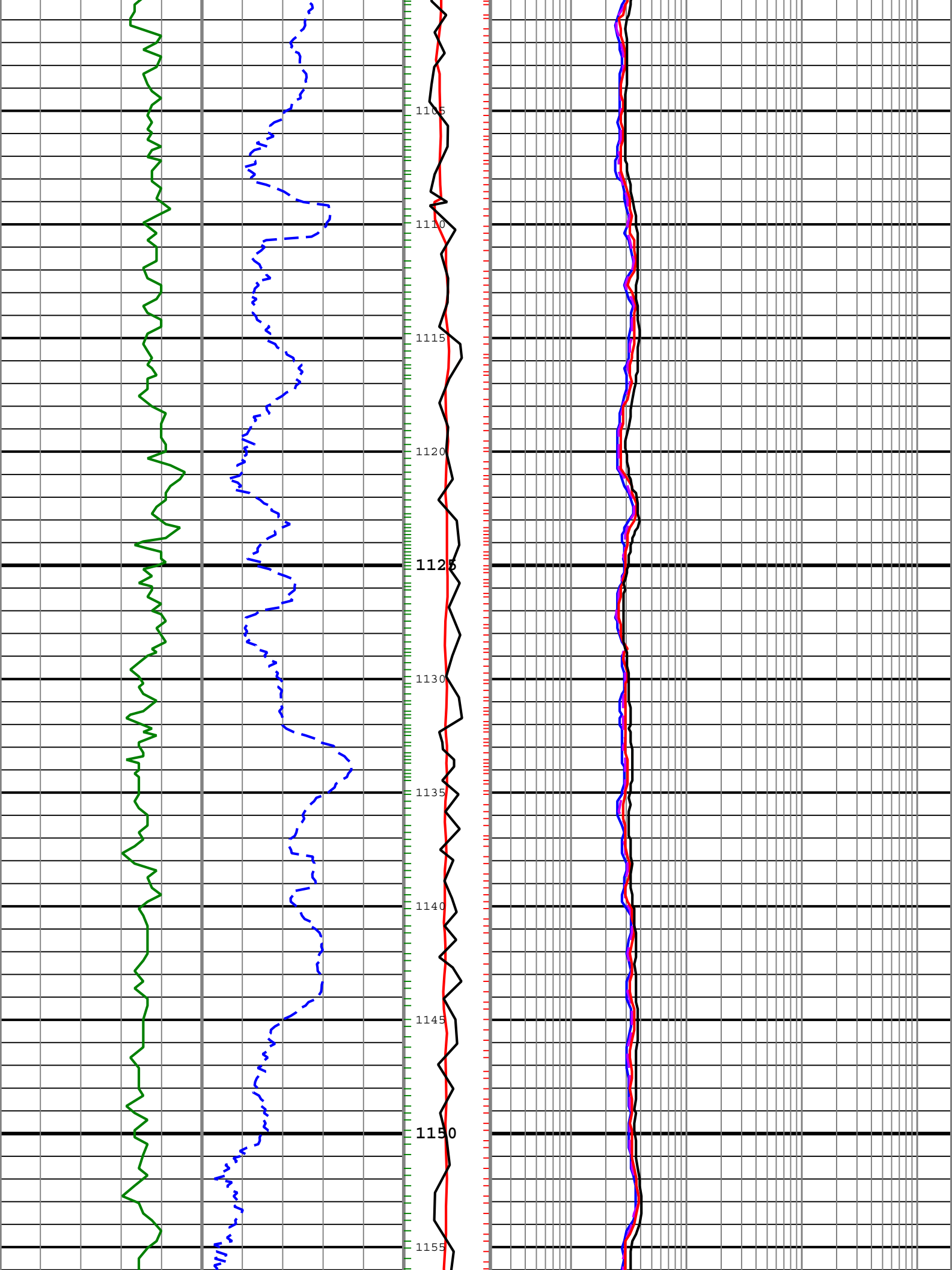
Disclaimer

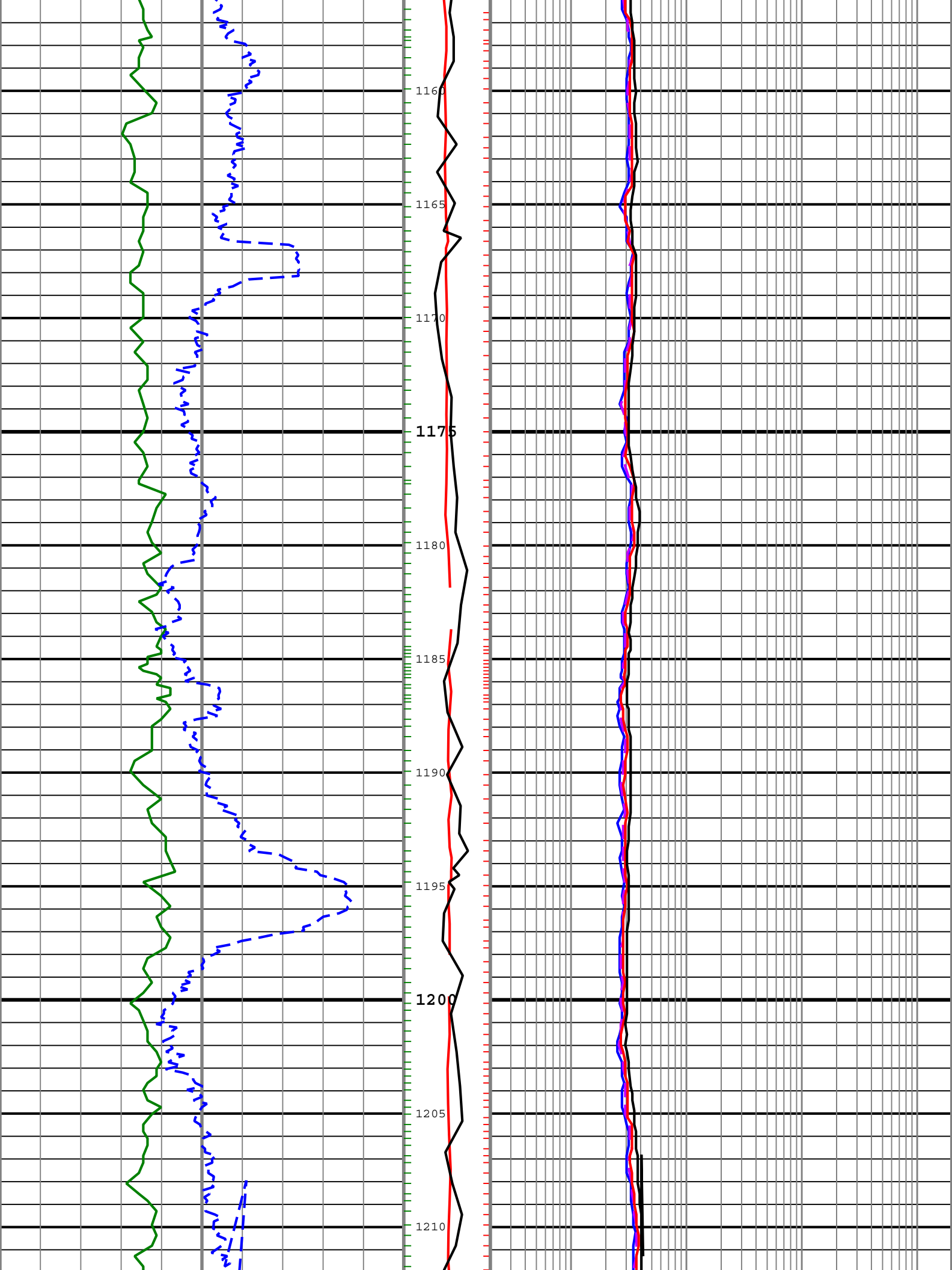
THE USE OF AND RELIANCE UPON THIS RECORDED-DATA BY THE HEREIN NAMED COMPANY (AND ANY OF ITS AFFILIATES, PARTNERS, REPRESENTATIVES, AGENTS, CONSULTANTS AND EMPLOYEES) IS SUBJECT TO THE TERMS AND CONDITIONS AGREED UPON BETWEEN SCHLUMBERGER AND THE COMPANY, INCLUDING: (a) RESTRICTIONS ON USE OF THE RECORDED-DATA; (b) DISCLAIMERS AND WAIVERS OF WARRANTIES AND REPRESENTATIONS REGARDING COMPANY'S USE AND RELIANCE UPON THE RECORDED-DATA; AND (c) CUSTOMER'S FULL AND SOLE RESPONSIBILITY FOR ANY INFERENCE DRAWN OR DECISION MADE IN CONNECTION WITH THE USE OF THIS RECORDED-DATA.

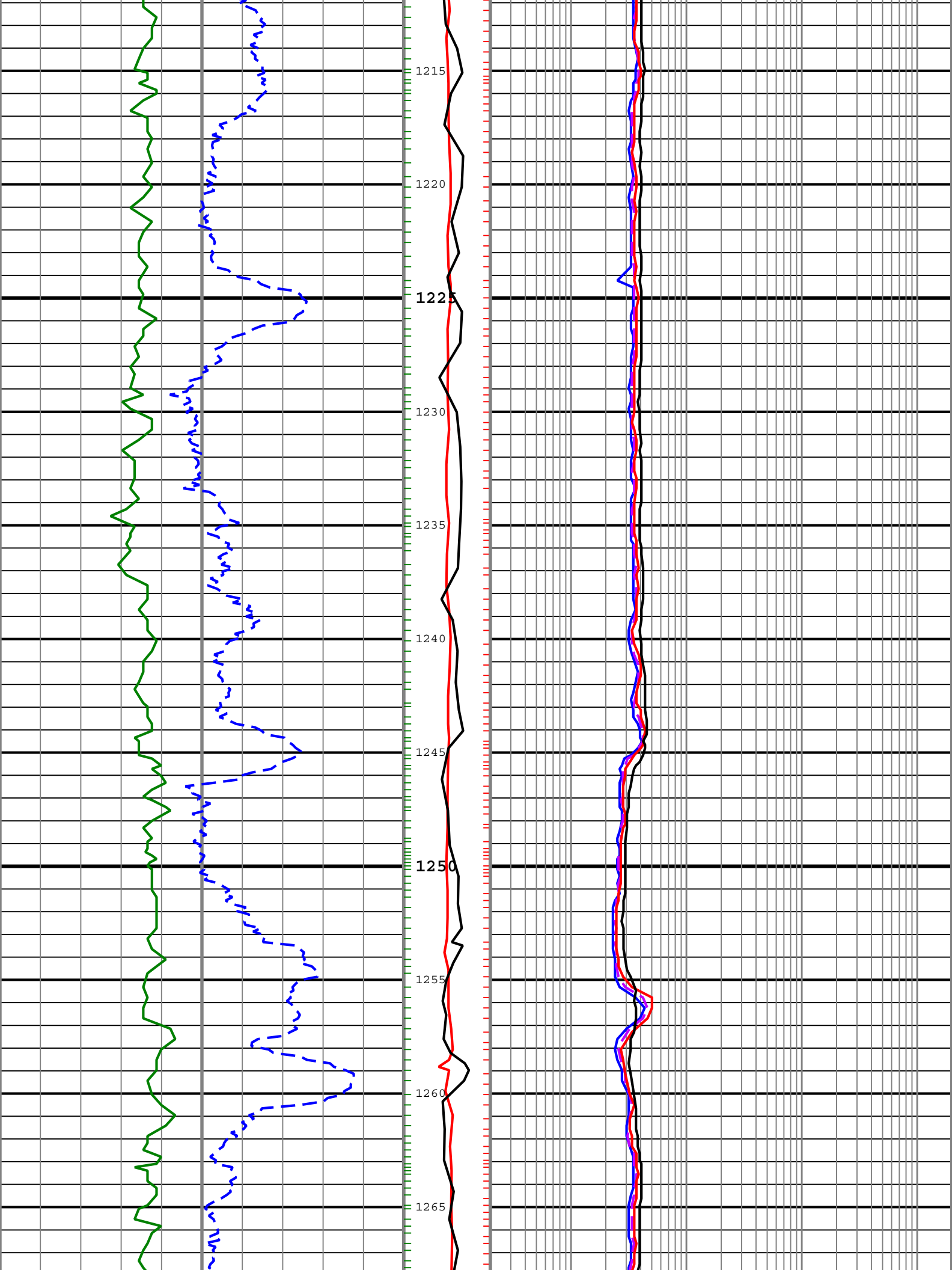
Contents

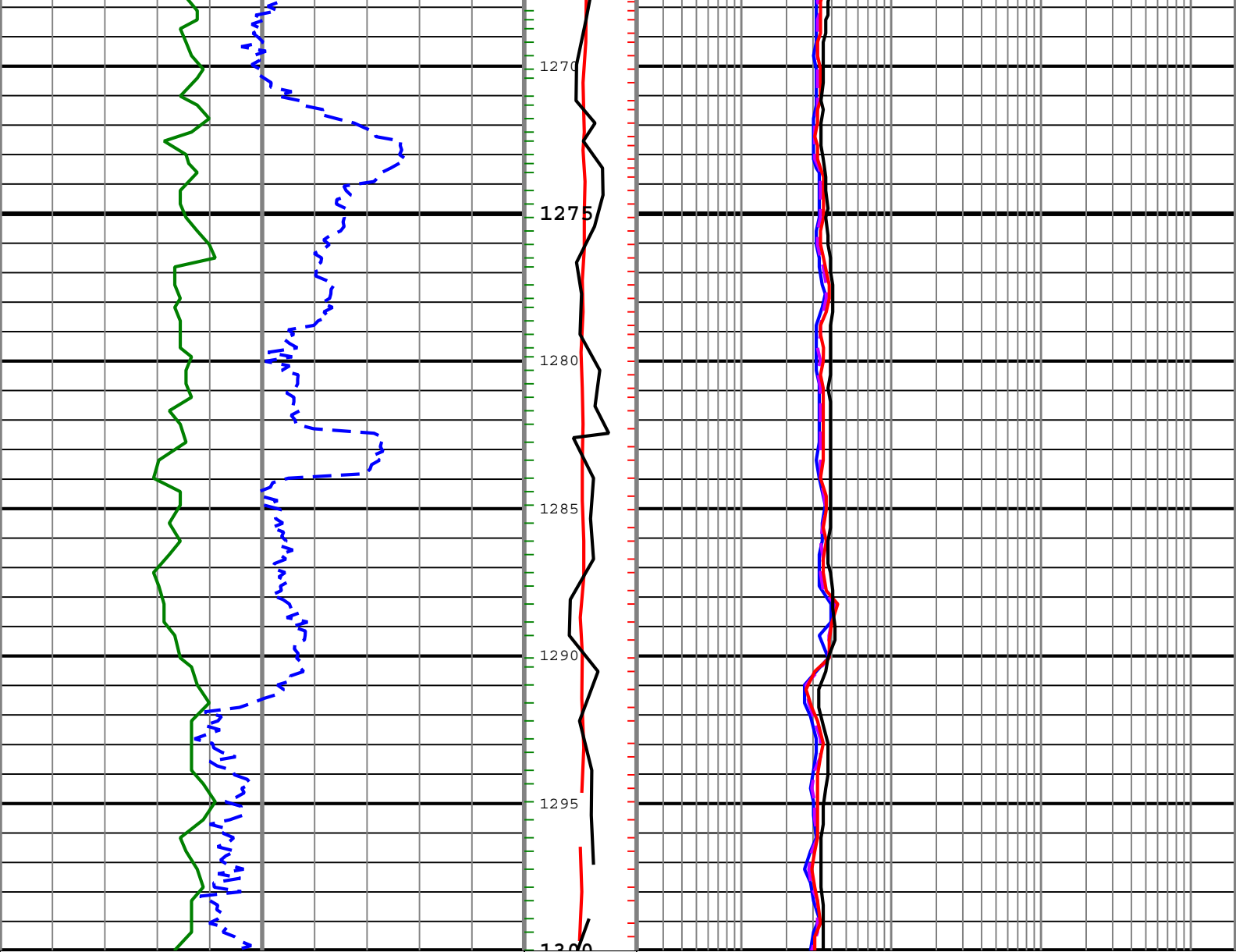
1. Header
2. Disclaimer
3. Contents
4. Run 3
 - 4.1 Software Version
 - 4.2 Pass Summary
 - 4.3 Log (MD_ARC Dual Resistivity 3-Log RT)
 - 4.4 Parameter Listing
5. Tail











Gamma Ray (GR)		Stick Slip Indicator (STICK)		Phase Shift Resistivity 16 inch Spacing at 2 MHz, Environmentally Corrected. (P16H)
0 gAPI 200		0 c/min 500		0.2 ohm.m 2000
Rate of penetration averaged over the last 5 ft (1.5 m) (ROP5)		Collar Rotational Speed (CRPM)		Phase Shift Resistivity 28 inch Spacing at 2 MHz, Environmentally Corrected. (P28H)
200 m/h 0		0 c/min 250		0.2 ohm.m 2000
				Phase Shift Resistivity 40 inch Spacing at 2 MHz, Environmentally Corrected. (P40H)
				0.2 ohm.m 2000
				Attenuation Resistivity 40 inch Spacing at 2 MHz, Environmentally Corrected. (A40H)
				0.2 ohm.m 2000

— P40H - Phase Shift Resistivity 40 inch Spacing at 2 MHz, Environmentally Corrected.

— GR_CAL - Calibrated Gamma Ray

Description: ARC Dual Frequency Resistivity RT Format: Log (MD_ARC Dual Resistivity 3-Log RT) Index Scale: 1:200 Index Unit: m Index Type: Measured
 Depth Creation Date: 27-Jul-2009 05:38:23

Channel Processing Parameters				
Parameter	Description	ToolPath	Value	Unit

BHK	Drilling Fluid Potassium Concentration	Borehole	0	%
BHT	Bottom Hole Temperature	Borehole	39	degC
BS	Bit Size	COMPLETION	Depth Zoned	in
DFD	Drilling Fluid Density	Borehole	1.09	g/cm3
DFT	Drilling Fluid Type	Borehole	Water	
GGRD	Geothermal Gradient	Borehole	18.23	degC/km
GRSE	Generalized Mud Resistivity Selection	Borehole	Computed (GEN-9)	
GTSE	Generalized Temperature Selection	Borehole	Gradient From Surface	
MST	Mud Sample Temperature	Borehole	20	degC
RMS	Resistivity of Mud Sample	Borehole	0.074	ohm.m
SHT	Surface Hole Temperature	Borehole	20	degC

Depth Zone Parameters

Parameter	Value	Start (m)	Stop (m)
BS	16	1050	1061.7
BS	12.25	1061.7	

All depth are actual.

Tool Control Parameters

Parameter	Description	ToolPath	Value	Unit
OFFBTM_TH	Threshold for deciding whether the bit is off bottom		Time Zoned	m

Time Zone Parameters

Parameter	Value	Start Time	Stop Time	Start Depth (m)	Stop Depth (m)
OFFBTM_TH	0.5	26-Jul-2009 15:32:43	26-Jul-2009 15:53:26	1027.73	1028.73
OFFBTM_TH	0.55	26-Jul-2009 15:53:26		1028.73	

All depth are at tool zero.

Company: ROC Oil

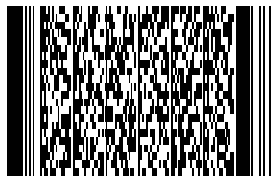
Well: Basker 7

Field: Gippsland Basin

Rig Name: Ocean Patriot

State: Victoria

Country: AUSTRALIA





VISION Resistivity

1:200 Measured Depth

Real Time Data