



PRECISION

Compact

COMPENSATED SONIC

1-200 TVD

COMPANY **ESSO AUSTRALIA PTY.LTD**

WELL **WKF W6A**

FIELD **KINGFISH GDA94**

PROVINCE/COUNTRY **BASS STRAIT, VICTORIA**

COUNTRY/STATE **AUSTRALIA**

LOCATION **S 38 35 34.706, E 148 6 19.764**

N 5727810.570 m, E 596273.687 m

FIELD PRINT

LSD

SEC

TWP

RGE

Other Services
COMPENSATED NEUTRON
PHOTO DENSITY
DUAL LATEROLOG

API Number

Permit Number

Permanent Datum MSL

Elevation 0.0 metres

Log Measured From DF @ 33.43m

above Permanent Datum

Drilling Measured From DF

Date

19-SEP-2006

Elevations:
KB 33.43 metres
DF 33.43 metres
GL -76.13 metres

Run Number

ONE

Depth Driller

2369.29 metres

Depth Logger

2369.29 metres

First Reading

2366.55 metres

Last Reading

634.61 metres

Casing Driller

634.61 metres

Casing Logger

634.61 metres

Bit Size

8.50 inches

Hole Fluid Type

KCL/PHPA

Density / Viscosity

1.17 g/cc 27.00 CP

PH / Fluid Loss

9.50 2.40 ml/30Min

Sample Source

FLOWLINE

Rm @ Measured Temp

0.125 @ 25.0 ohm-m

Rmf @ Measured Temp

0.096 @ 25.0 ohm-m

Rmc @ Measured Temp

0.102 @ 25.0 ohm-m

Source Rmf / Rmc

MEAS MEAS

Rm @ BHT

0.053 @ 90.3 ohm-m

Time Since Circulation

39.75 HOUR

Max Recorded Temp

94.60 deg C

Equipment Name

CML

Equipment / Base

1 SALE

Recorded By

B J R MOSS, J BLESSING

Witnessed By

D VAN DER AA

LAST CIRC.

17:15 17/9

Last Line

BOREHOLE RECORD

Bit Size inches	Depth From metres	Depth To metres
8.500	695.00	3477.00

CASING RECORD

Type	Size inches	Depth From metres	Shoe Depth metres	Weight pounds/ft
K-55	10.750	0.00	695.00	40.50

REMARKS

RIG: NABORS 453

5" SHUTTLE/MEMORY COMPACT OPERATION.
CREW: B MOSS , J.BLESSING, M KOLCZE, B GOODWIN.

FIELD FINAL LOGS TO BE CORRELATED TO ANADRILL GAMMA LOG.

MAX. TEMPERATURE: 94.6 DEG C AT 3425.1 m MD
MAX. INCLINATION: 54.32 DEG AT 3094.17 m MD
MAX. DOGLEG SEVERITY: 4.56 DEG/30m AT 738.24 m MD
DEPLOYMENT ANGLE: 53.5 DEG

HVOL: FT^3
AVOL: FT^3

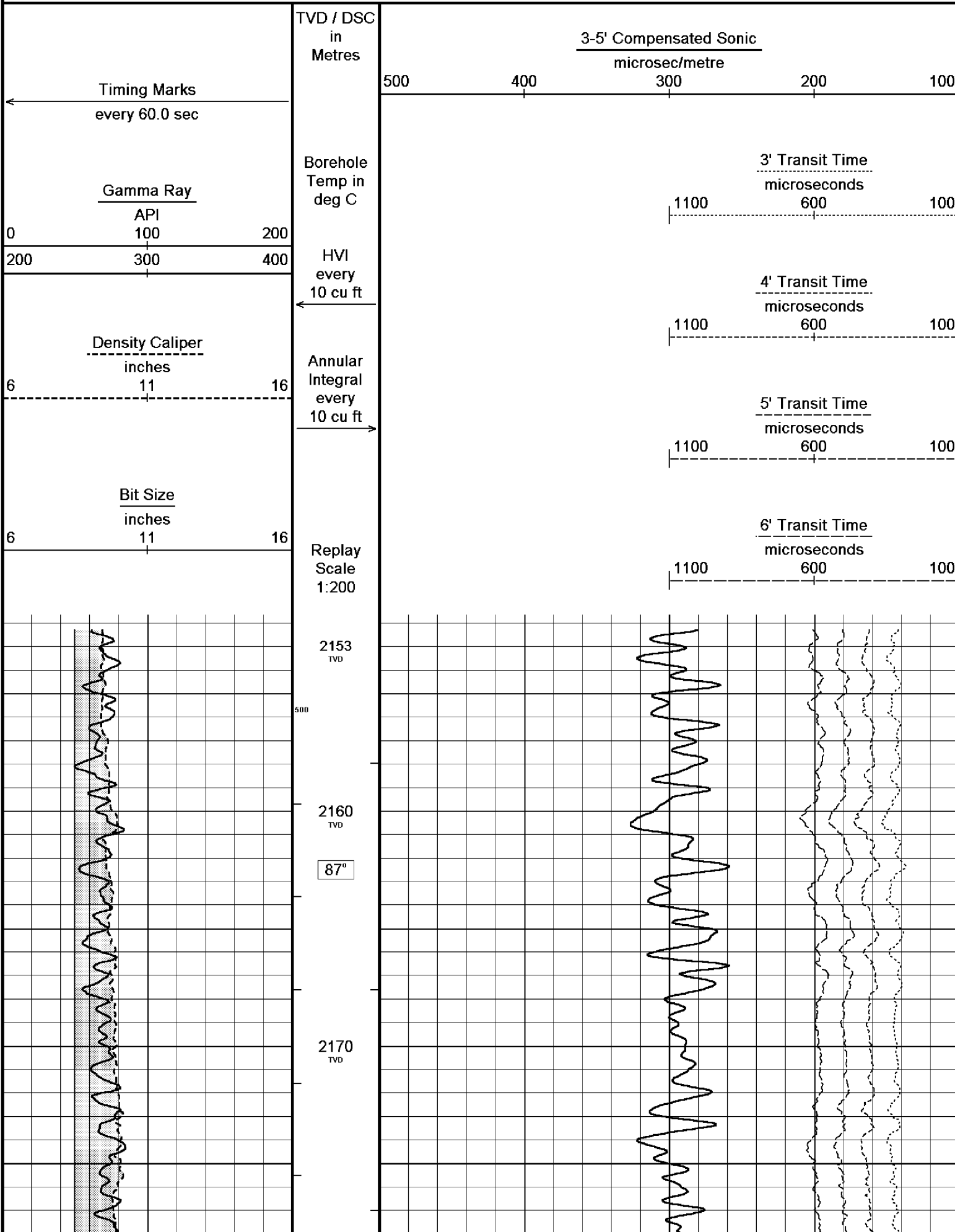
LOGGING SPEED 6M/MIN FROM TD TO 3112 M MD
LOGGING SPEED 12 M/MIN FROM 3112 TO 1244 M MD
LOGGING SPEED 6 M/MIN FROM 1244 TO 1015 M MD
LOGGING SPEED 12 M/MIN FROM 1015 TO 671 M MD

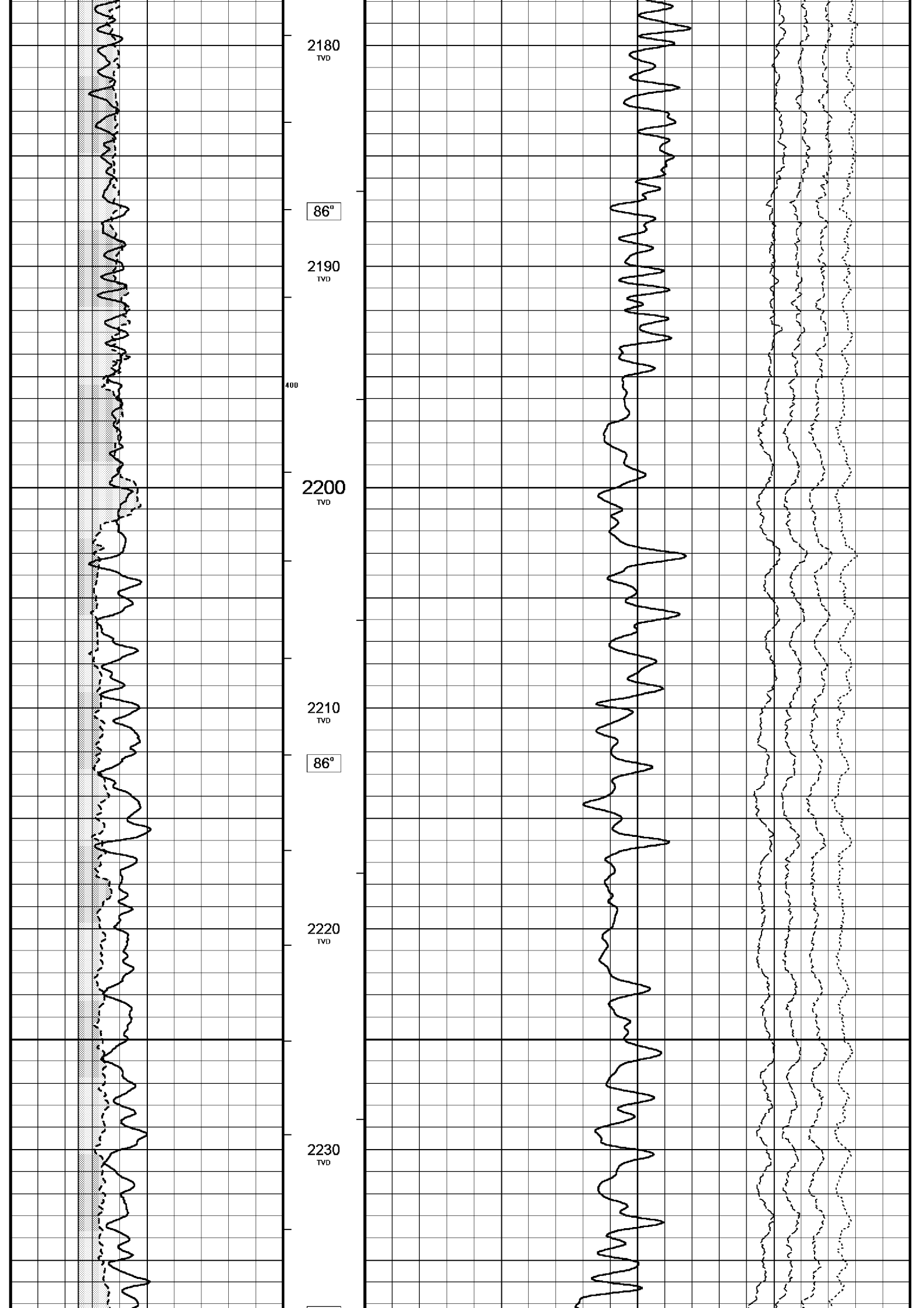
All interpretations are opinions based on inferences from electrical or other measurements and we cannot, and do not, guarantee the accuracy or correctness of any interpretations, and we shall not, except in the case of gross or wilful negligence on our part, be liable or responsible for

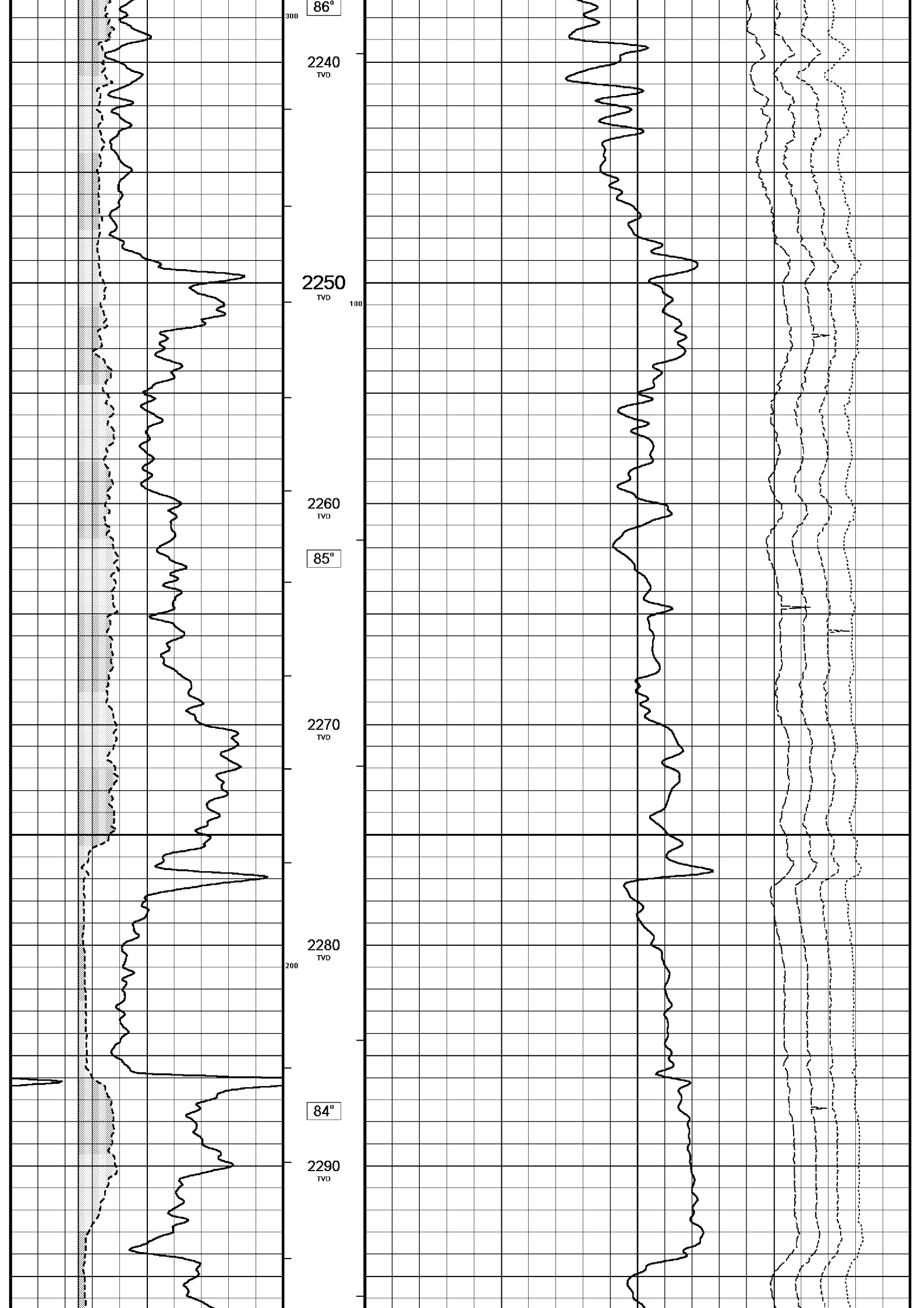
of correctness of any interpretations, and we shall not, except in the case of gross or willful negligence on our part, be liable or responsible for any loss, costs, damages or expenses incurred or sustained by anyone resulting from any interpretation made by any of our officers, agents or employees. These interpretations are also subject to our general terms and conditions in our price schedule.

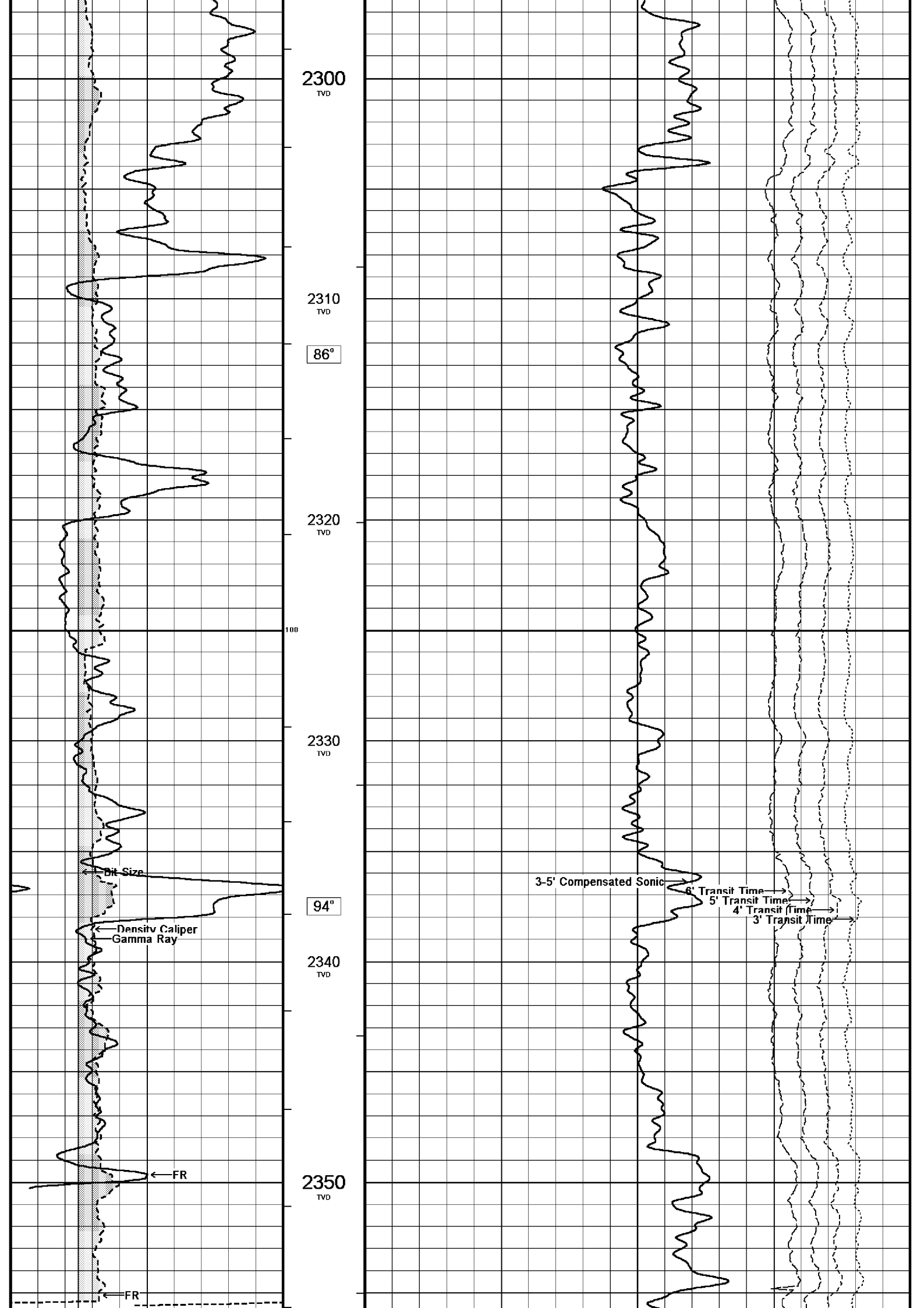
MAIN LOG 1:200

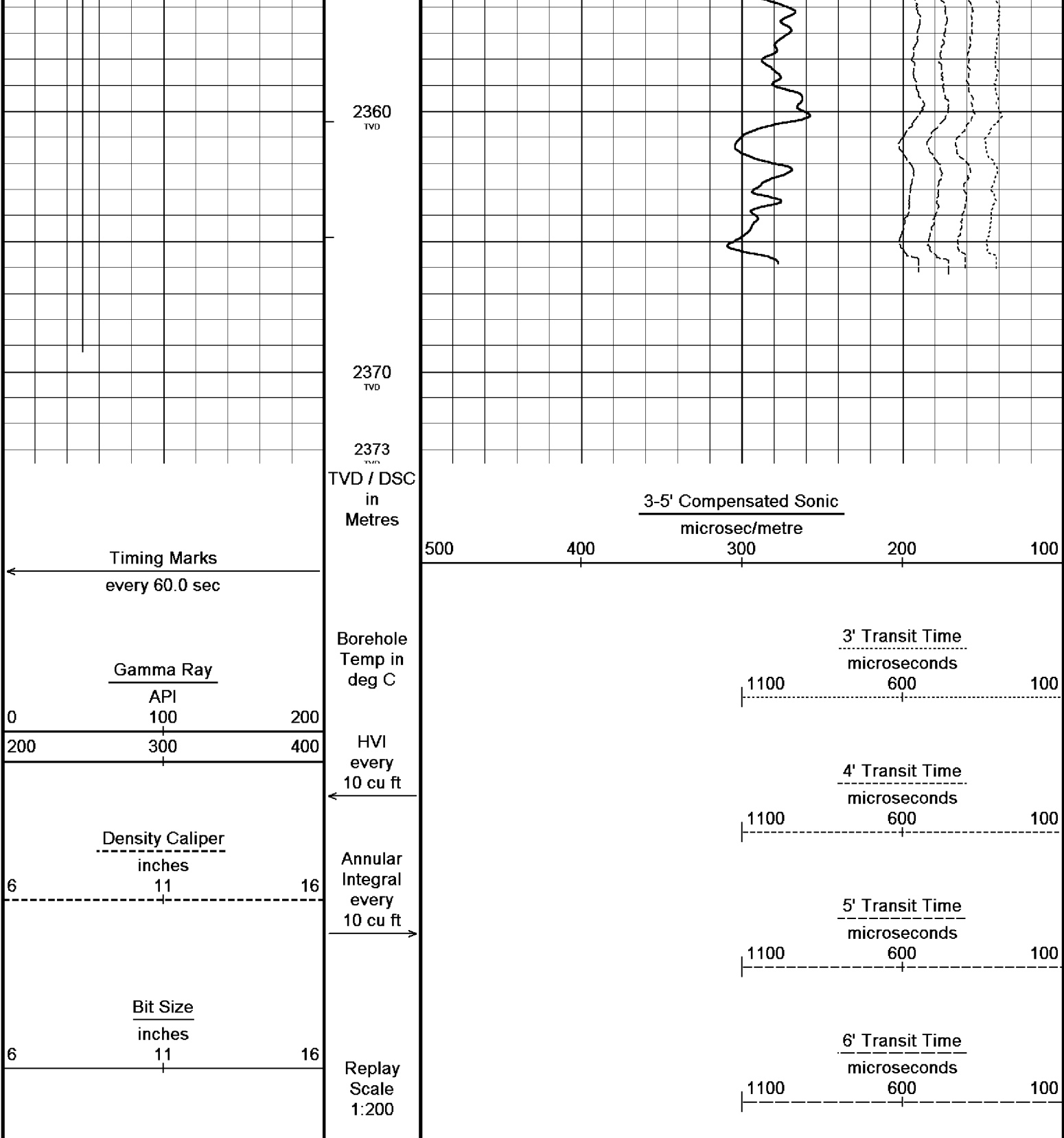
Depth Based Data - Maximum Sampling Increment 10.0cm Plotted on 20-SEP-2006 02:20
 Filename: C:\logs\WKF_W6A\FIELD_DATA\WKF_W6A_MAIN_LOG3.dta Recorded on 19-SEP-2006 22:44
 System Configuration Dates: Logged 17-JUN-2004: Processed 17-JUN-2004: Plotted 17-JUN-2004:











Depth Based Data - Maximum Sampling Increment 10.0cm
 Plotted on 20-SEP-2006 02:20
 Filename: C:\logs\WKF_W6A\FIELD_DATA\WKF_W6A_MAIN_LOG3.dta
 Recorded on 19-SEP-2006 22:44
 System Configuration Dates: Logged 17-JUN-2004: Processed 17-JUN-2004: Plotted 17-JUN-2004:

↑ MAIN LOG 1:200 ↑

BEFORE SURVEY CALIBRATION
 C:\logs\WKF_W6A\FIELD_DATA\WKF_W6A_MAIN_LOG3.dta

General Constants All 000

General Parameters		
Mud Resistivity	0.122	ohm-metres
Mud Resistivity Temperature	25.000	degrees C
Water Level	0.000	metres
Density/Neutron Processing	Wet Hole	

Hole/Annular Volume and Differential Caliper Parameters			
HVOL Caliper 1	Density Caliper		
HVOL Caliper 2	Bit Size		
Annular Volume Diameter	7.000	inches	
Caliper for Differential Caliper	None		

Rwa Parameters			
Porosity used	Base Density Porosity		
Resistivity used	Deep Laterolog		
RWA Constant A	0.610		
RWA Constant M	2.150		

High Resolution Temperature Calibration MCG 142

Field Calibration on 17-SEP-2006,09:45

	Measured	Calibrated(Deg C)
Lower	0.00	0.00
Upper	100.00	100.00

High Resolution Temperature Constants MCG 142

Pre-filter Length	11
-------------------	----

Gamma Calibration MCG 142

Field Calibration on 17-SEP-2006 02:40

	Measured	Calibrated (API)
Background	14	9
Calibrator (Gross)	1359	918
Calibrator (Net)	1345	909

Gamma Constants MCG 142

Gamma Calibrator Number	060	
Mud Density	1.00	gm/cc
Caliper Source for Processing	Density Caliper	
Tool Position	Eccentred	
Concentration of KCl	0.00	kppm

Caliper Calibration MPD 083

Base Calibration on 3-SEP-2006 16:00
Field Calibration on 17-SEP-2006 02:53

Base Calibration			
Reading No	Measured	Calibrator Size (in)	
1	14704	4.01	
2	22880	5.99	
3	31311	7.98	
4	39757	9.94	
5	49111	12.01	
6	N/A	N/A	
Field Calibration			
	Measured Caliper (in)	Actual Caliper (in)	
	7.93	7.98	

Sonic Constants MSS 066

Maximum Boundary Contrast	100.00	micro-sec/ft
Fluid Transit Time	189.00	micro-sec/ft
Limestone Transit Time	47.50	micro-sec/ft
Sandstone Transit Time	55.50	micro-sec/ft
Dolomite Transit Time	43.50	micro-sec/ft
Sonic used for Porosities	3-5' Compensated Sonic	
Correction for Sonde Skew	Applied	
Cycle Stretch Algorithm	Applied	
MN3FT	N/A	micro-sec
MX3FT	N/A	micro-sec

Fixed Gate Parameters

Start Time (micro-sec)	End Time (micro-sec)	Discriminator (mV)	N/A
N/A	N/A	N/A	N/A
N/A	N/A	N/A	N/A
N/A	N/A	N/A	N/A
N/A	N/A	N/A	N/A
N/A	N/A	N/A	N/A

Down Hole Fixed Gate Parameters

Gate Start	N/A	micro-sec
Gate Width	N/A	micro-sec
Initial Discriminator Level	0.0000	mVolts

Full Waveform Parameters

Use 3' Waveform to derive TR	No	
Use 4' Waveform to derive TR	No	
Use 5' Waveform to derive TR	No	
Use 6' Waveform to derive TR	No	
3' Waveform Discriminator Level	0.45	mV
4' Waveform Discriminator Level	0.45	mV
5' Waveform Discriminator Level	0.35	mV
6' Waveform Discriminator Level	0.35	mV
3' Waveform Filter	None	
4' Waveform Filter	None	
5' Waveform Filter	None	
6' Waveform Filter	None	
Semblance Level	0.50	
Semblance Window Width	120.00	micro-sec
Sonic 1 Despiker	100.00	micro-sec/ft
Sonic 2 Despiker	100.00	micro-sec/ft

DOWNHOLE EQUIPMENT

C:\logs\WKF_W6A\FIELD_DATA\WKF_W6A_MAIN_LOG3.dta

Compact Swivel Head Adaptor F
SHA 71 Length: 0.83 m Weight: 26.5 lb

Compact Knuckle Joint
SKJ 100 Length: 0.66 m Weight: 24.3 lb

Compact Battery Sub.
MBS 99 Length: 4.41 m Weight: 44.1 lb

Compact Inline Standoff B
MIS 31 Length: 0.65 m Weight: 15.4 lb

Compact Stiff Bridle Electrode Sub.
MBE 18 Length: 3.76 m Weight: 94.8 lb

Compact Inline Standoff B
MIS 141 Length: 0.65 m Weight: 15.4 lb

Compact Stiff Bridle Electrode Sub.
MBE 19 Length: 3.76 m Weight: 94.8 lb

Compact Inline Standoff B
MIS 129 Length: 0.65 m Weight: 15.4 lb



MBE 21 3rd bridle
MLK 111 Length: 3.76 m Weight: 94.8 lb

Compact Inline Standoff B
MIS 135 Length: 0.65 m Weight: 15.4 lb

Compact Gamma
MCG 142 Length: 2.65 m Weight: 63.9 lb

Compact Memory Sub A.C
MMS 38 Length: 0.95 m Weight: 30.9 lb

Compact Inline Bowspring A
MIS 95 Length: 1.74 m Weight: 33.1 lb

Compact Swivel Head Adaptor F
SHA 64 Length: 0.83 m Weight: 26.5 lb

Compact Knuckle Joint
SKJ 101 Length: 0.66 m Weight: 24.3 lb

Compact Neutron
MDN 85 Length: 1.53 m Weight: 50.7 lb

Compact Density/Caliper
MPD 83 Length: 2.92 m Weight: 90.4 lb

Compact Knuckle Joint
SKJ 46 Length: 0.66 m Weight: 24.3 lb

Compact Swivel Head Adaptor F
SHA 73 Length: 0.83 m Weight: 26.5 lb

Compact Inline Bowspring A
MIS 24 Length: 1.74 m Weight: 33.1 lb

Compact Inline Standoff B
MIS 132 Length: 0.65 m Weight: 15.4 lb

Compact Upper Guard Sub.
MUG 30 Length: 2.74 m Weight: 68.3 lb



32.22 m GGCE - Borehole Corrected Gamma
31.33 m CGXT - MCG External Temperature

26.17 m NPRL - Limestone Neutron Por.

23.48 m AVOL - Annular Volume
23.48 m HVOL - Hole Volume
23.48 m CLDC - Density Caliper
23.27 m DEN - Compensated Density

23.27 m DCOR - Density Correction
23.25 m PDPE - PE

Compact Inline Standoff B
MIS 139 Length: 0.65 m Weight: 15.4 lb

Compact Laterolog Electrode Sub.
MLE 31 Length: 3.76 m Weight: 92.6 lb

Compact Inline Standoff B
MIS 138 Length: 0.65 m Weight: 15.4 lb

Compact Lower Guard Sub.
MLG 7 Length: 2.44 m Weight: 55.1 lb

Compact Inline Standoff B
MIS 73 Length: 0.65 m Weight: 15.4 lb

Compact Sonic
MSS 66 Length: 3.82 m Weight: 72.8 lb

Compact Inline Standoff B
MIS 127 Length: 0.65 m Weight: 15.4 lb

Compact Induction
MAI 39 Length: 3.29 m Weight: 48.5 lb

Pressure Bung + Hole Finder
HFS 4 Length: 0.40 m Weight: 6.6 lb

Total Length: 54.01 m Weight: 1265.5 lb



13.35 m DDLL - Deep Laterolog
13.35 m DSLL - Shallow Laterolog

4.60 m TR22 - 5' Transit Time
4.60 m TR11 - 4' Transit Time
4.60 m TR21 - 3' Transit Time
4.60 m TR12 - 6' Transit Time

4.60 m DT35 - 3-5' Compensated Sonic

Tool Zero (0.44m from bottom)

All measurements relative to tool zero.

COMPANY	ESSO AUSTRALIA PTY.LTD
WELL	WKF W6A
FIELD	KINGFISH GDA94
PROVINCE/COUNTY	BASS STRAIT, VICTORIA
COUNTRY/STATE	AUSTRALIA

Elevation Kelly Bushing	metres	First Reading	2366.55	metres	
Elevation Drill Floor	33.43	metres	Depth Driller	2369.29	metres
Elevation Ground Level	76.13	metres	Depth Logger	2369.29	metres

Elevation Ground Level -78.15 metres

Depth Logger 2309.29 metres



COMPENSATED SONIC
1:200 TVD