



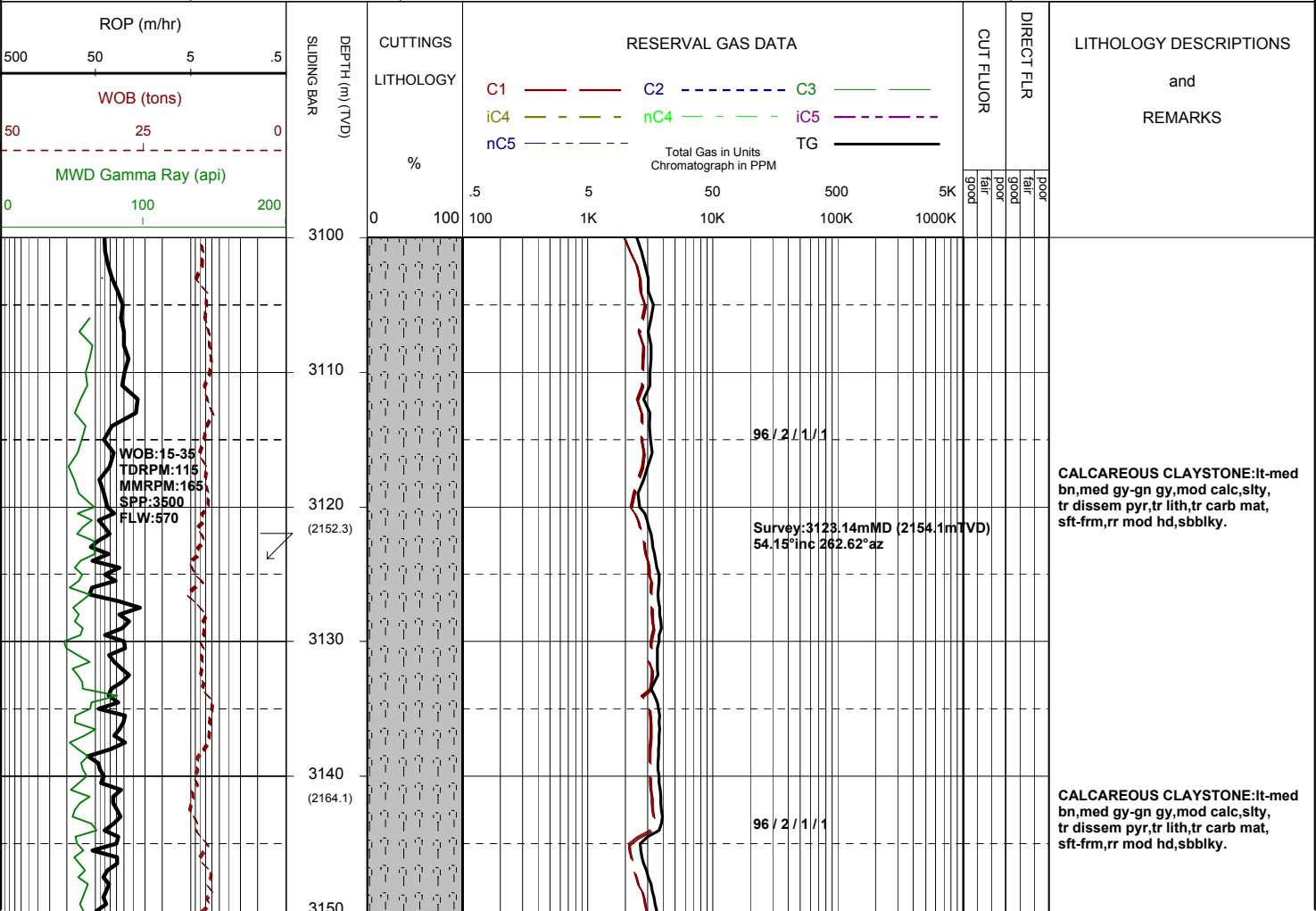
MASTERLOG

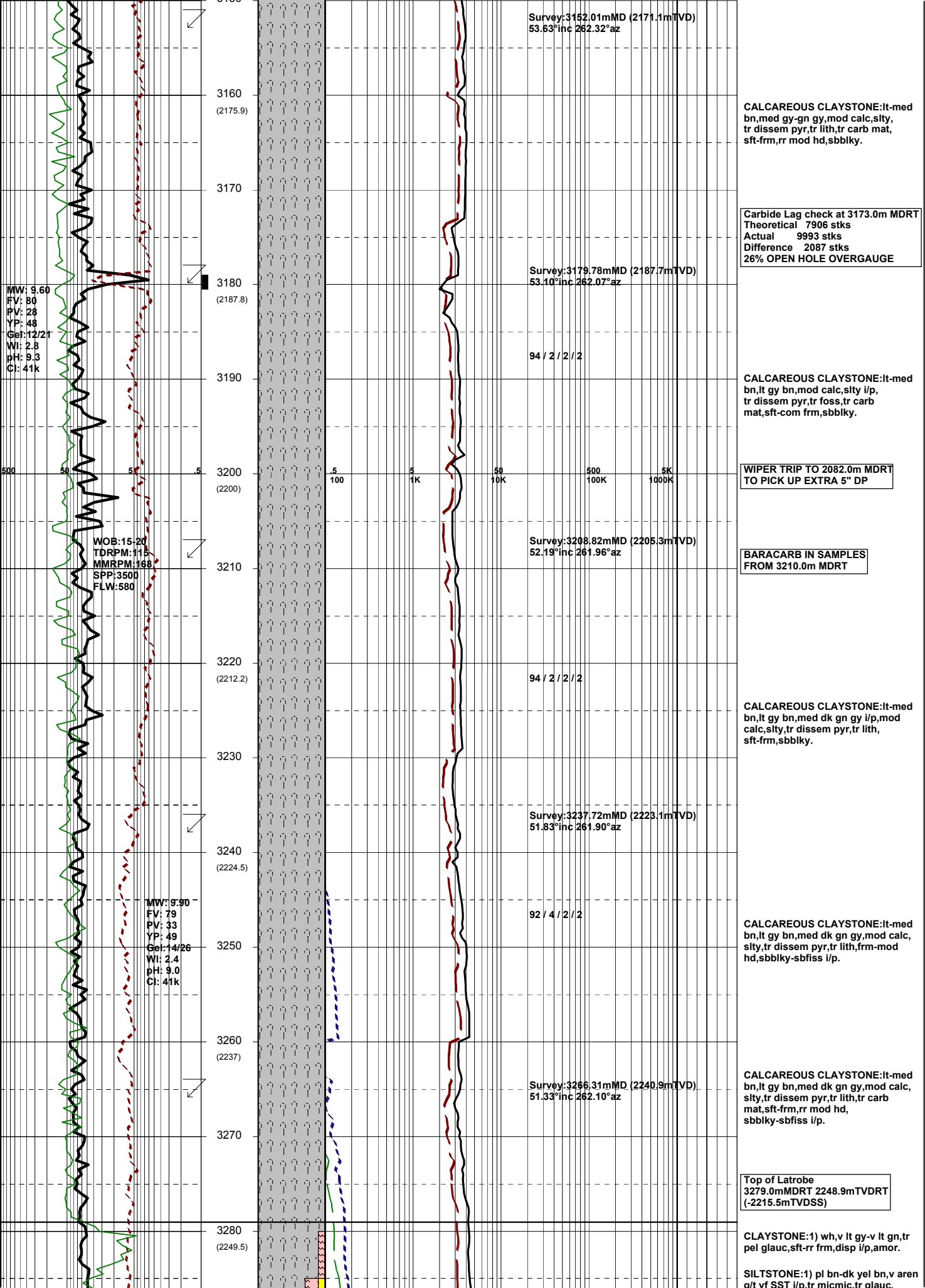
WKF-W6A



GENERAL	SURFACE POSITION	HOLE / CASING INFO	DATE / DEPTH	ENGINEERS
Country : AUSTRALIA	Longitude : 148 06 19.764E	8-1/2" Hole to	Spud Date : 07-09-2006	Steve Oades Mark Smith Nick Abolins
Permit : VIC L8	Latitude : 38 35 34.706S		Total Depth Date :	
Field : Kingfish	MGA Co-ord X : 596273.69mE	10-3/4" Csg Shoe at 694.8m MDRT	Total Depth :	
Basin : GIPPSLAND	MGA Co-ord Y : 5727810.57mN	7" Production Csg at	True Vertical Depth :	
Well Type : DEVELOPMENT	RT to MSL : 33.43m		Log Scale : 1/ 500	
Rig Name : NABORS 453	RT to Sea Bed : 109.56m			

ABBREVIATIONS	LITHOLOGY LEGEND	ENGINEERING LEGEND
MW Mud Weight WOB Weight on Bit (klbs) RV Funnel Viscosity RPM Rotations Per Min PV Plastic Viscosity FLW Flow Rate (gpm) YP Yield Point SPP Pump Pressure (psi) Gel Gel Strength RR Re-Run Bit WL Water Loss TG Trip Gas KCl Potassium Chloride CG Connection Gas Cl Chlorides BG Background Gas Incl Inclination DGP Drilled Gas Peak Az Azimuth MM Mud Motor	CLAYSTONE MARL SILTSTONE LIMESTONE SANDSTONE DOLOMITE SHALE CHERT CONGLOMERATE COAL	CASING SHOE LINER HANGER BIT CHANGE DEVIA. SURVEY SWC UNRECOV SIDEWALL CORE CORE WIRELINE LOGS MDT POINTS: PRESSURE ONLY SAMPLE SEAL FAILURE TIGHT SLIDING





Survey:3152.01mMD (2171.1mTVD)
53.63°inc 262.32°az

3160
(2175.9)

CALCAREOUS CLAYSTONE:lt-med
bn,med gy-gn gy,mod calc,silty,
tr dissem pyr,tr lith,tr carb mat,
sft-frm,rr mod hd,sbbkly.

Carbide Lag check at 3173.0m MDRT
Theoretical 7906 stks
Actual 9993 stks
Difference 2087 stks
26% OPEN HOLE OVERGAUGE

Survey:3179.78mMD (2187.7mTVD)
53.10°inc 262.07°az

3180
(2187.8)

94 / 2 / 2 / 2

CALCAREOUS CLAYSTONE:lt-med
bn,lt gy bn,mod calc,silty i/p,
tr dissem pyr,tr foss,tr carb
mat,sft-com frm,sbbkly.

MW: 9.60
FV: 80
PV: 28
YP: 48
GeI:12/21
WI: 2.8
pH: 9.3
CI: 41k

**WIPER TRIP TO 2082.0m MDRT
TO PICK UP EXTRA 5" DP**

3200
(2200)

Survey:3208.82mMD (2205.3mTVD)
52.19°inc 261.96°az

3210

**BARACARB IN SAMPLES
FROM 3210.0m MDRT**

WOB:15.20
TDRPM:115
MMRPM:168
SPP:3500
FLW:580

94 / 2 / 2 / 2

3220
(2212.2)

CALCAREOUS CLAYSTONE:lt-med
bn,lt gy bn,med dk gn gy i/p,mod
calc,silty,tr dissem pyr,tr lith,
sft-frm,sbbkly.

3230

Survey:3237.72mMD (2223.1mTVD)
51.83°inc 261.90°az

3240
(2224.5)

92 / 4 / 2 / 2

CALCAREOUS CLAYSTONE:lt-med
bn,lt gy bn,med dk gn gy,mod calc,
silty, tr dissem pyr,tr lith,frm-mod
hd,sbbkly-sbfiss i/p.

MW: 9.90
FV: 79
PV: 33
YP: 49
GeI:14/26
WI: 2.4
pH: 9.0
CI: 41k

3250

Survey:3266.31mMD (2240.9mTVD)
51.33°inc 262.10°az

3260
(2237)

CALCAREOUS CLAYSTONE:lt-med
bn,lt gy bn,med dk gn gy,mod calc,
silty, tr dissem pyr,tr lith,tr carb
mat,sft-frm,rr mod hd,
sbbkly-sbfiss i/p.

3270

Top of Latrobe
3279.0mMDRT 2248.9mTVDRT
(-2215.5mTVDSS)

3280
(2249.5)

CLAYSTONE:1) wh,v lt gy-v lt gn,tr
pel glauc,sft-rr frm,disp i/p,amor.

SILTSTONE:1) pl bn-dk yel bn,v
a/t vf SST i/p,tr micmic,tr glauc.

3290
3300 (2262.1)
3310
3320 (2274.7)
3330
3340 (2287.3)
3350
3360 (2299.9)
3370
3380

WOB:15-20
TDRPM:415
MMRPM:171
SPP:3550
FLW:590

Survey:3295.03mMD (2258.9mTVD)
50.77°inc 261.90°az

82 / 7 / 6 / 4 / 1

Survey:3323.76mMD (2277.1mTVD)
50.89°inc 261.78°az

36 / 13 / 21 / 20 / 10

Survey:3352.54mMD (2295.1mTVD)
51.40°inc 261.23°az

38 / 13 / 21 / 19 / 9

SANDSTONE:wh-pl gn,lt yel bn,dom vf-f,wl srt,sa-sr,tr glauc mtx,fri-mod hd,ti vis por,no fluor.

CLAYSTONE:2) lt-med olv bn,sft, disp,amor,com rock flour.

SANDSTONE:wh-pl gn,opq i/p,vf-f, wl srt,sa-sr,tr glauc mtx,fri-mod hd,ti inf & vis por,no fluor.

SILTSTONE:1) pl bn-dk yel bn,aren g/t vf SST i/p,tr micmic,frm,mod mod hd i/p,sbbiky.

SANDSTONE:wh-pl gn,vf-f,wl srt, sa-sr,tr glauc mtx,fri-mod hd, ti inf & vis por,no fluor.

Top of P1.1
3323.5mMDRT 2276.9mTVDRT
(-2243.5mTVDSS)

SANDSTONE:wh-pl gn,clr-trnsl,vf,wl srt,sa-sr,tr glauc mtx,mod hd agg, ti inf & vis por,fluor.

SANDSTONE:clr-trnsl,f-occ v crs, dom med-crs,mod srt,sa-sr,wk pyr cmt,tr nod pyr,dom lse,gen cln, fr inf & vis por,fluor.

FLUORESCENCE:3323.5m-32XX.0m
2-10% no oil stain,dll-mod brt yel gn sptd-ptchy fluor,no-v slw diff c/c, ptchy-thk pl gn ring res.

SILTSTONE:2) lt-med gy,aren,com micr-pyr,sft,mod hd-hd i/p,sbbiky.

CLAYSTONE:2) lt-med olv bn,med bn, sft,disp,amor,com rock flour.

P1.2L (SBP3)
3352.0mMDRT 2294.8mTVDRT
(-2261.4mTVDSS)

Top of M1.2U
3358.0mMDRT XXXX.XmTVDRT
(-22XXX.XmTVDSS)

