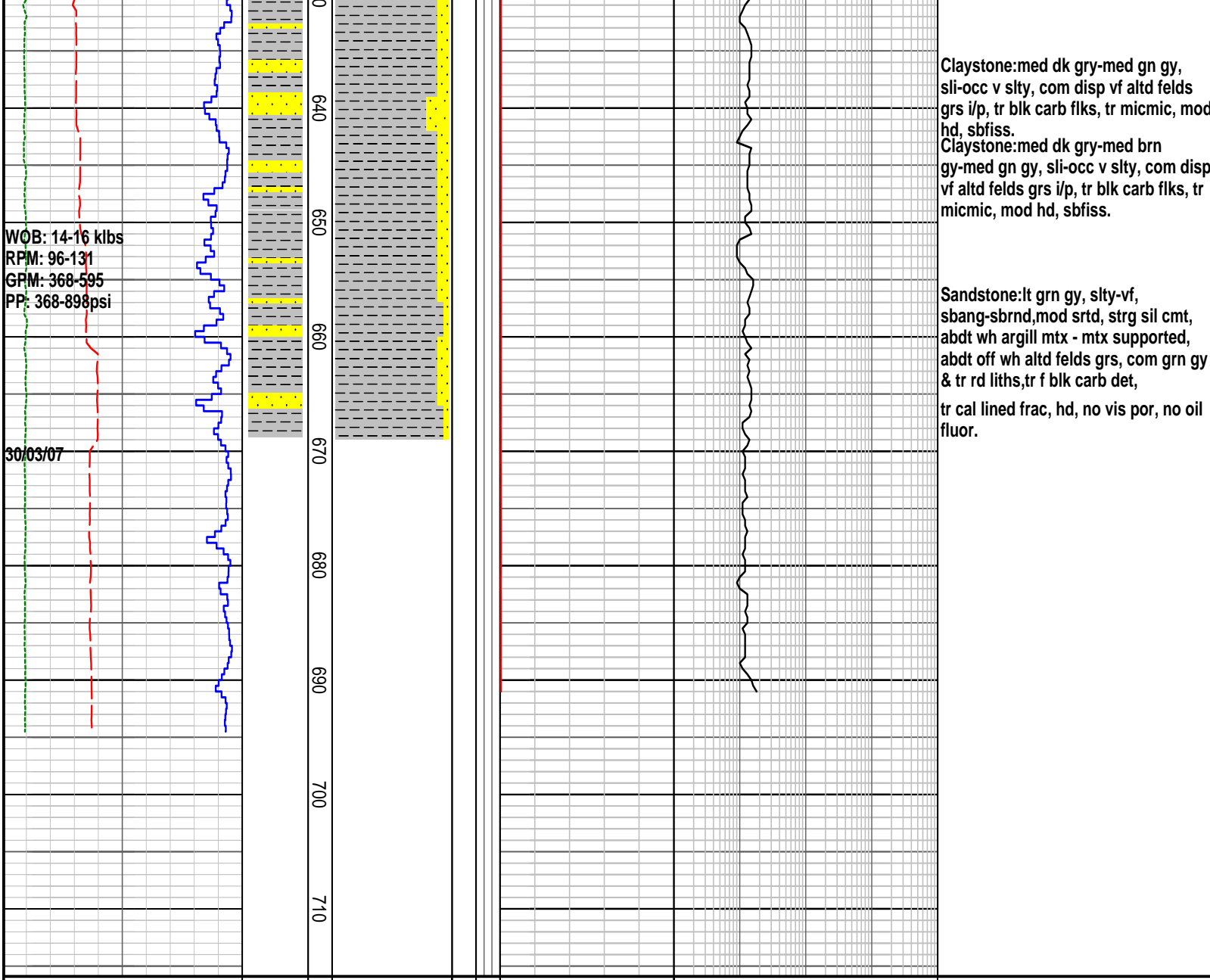




FORMATION EVALUATION LOG

RATE OF PENETRATION ROP (0-100m/hr) 100 90 80 70 60 50 40 30 20 10 Backup ROP (100-200m/hr) 200 190 180 170 160 150 140 130 120 110 WOB (klb) 5 10 15 20 25 30 35 40 45 50 TORQUE AVG 5 10 15 20 25 30 35 40 45 50	INTERPRETED LITHOLOGY	MD meters 1:500	LITHOLOGY	CORE	OIL SHOWS	TOTAL GAS TOTAL GAS 10 20 30 40 50 unit BACKUP TOTAL GAS 0.6 0.7 0.8 0.9 1 unit	CHROMATOGRAPH				REMARKS
							1	Methane ppm	10000	1	
							1	Ethane ppm	10000	1	
							1	Propane ppm	10000	1	
							1	iso-Butane ppm	10000	1	
							1	n-Butane ppm	10000	1	
							1	iso-Pentane ppm	10000	1	
								n-Pentane ppm			
								10	100	1000	10000
WOB: 11-27 klbs RPM: 90-100 GPM: 581-616 PP: 670-700psi		540									Claystone: (weathered volcanics), or wh-brick rd,mottled txt, tr vf-vc yel rd stained ang qtz grs, sft-hd,non fiss, v disp, non fiss.
26-29/03/07		550									Claystone: (partially weathered volcanics), off wh-brick rd,mottled txt, cryptoxln-microxln,tr vf-vc yel rd stained ang qtz grs, sft-hd,non fiss. Claystone:(lightly metamorphosed), med gy-med grn gy,microxln txt i/p,sli slty,tr blk carb flecks,tr micmic,hd,sbfiss.
Bit #2 REED PDC 12 1/4 Jets 7x12 in 556m/out XXXm XXXm/XXhrs TXBX In gauge		560									Sandstone:lt grn gy, vf, sbang-sbrnd,mod srted, mod sil cmt, abdt wh argill mtx, abdt off wh altd felds grs, com grn gy & tr rd liths,tr f blk carb det,hd, no vis por,no oil fluor
		570									Drilled 16" hole to 556m. POOH to run casing 12.25" Hole drill from 556m Leak off test @ 424m MW 9.1 ppg,150 psi, EMW = 11.1 ppg
		580									
		590									Sandstone:lt grn gy, slty-vf, sbang-sbrnd,mod srted, mod-strg sil cmt, abdt wh argill mtx, abdt off wh altd felds grs, com grn gy & tr rd liths,tr f blk carb det,hd, no vis por,no no oil fluor.
		600									Claystone:med gn gy-med dk gy,sli-occ v slty, occ comm disp vf altd felds grs, tr blk carb flks & blk coal det,tr micmic,rr calc lined frac,mod hd, sbfiss.
WOB: 13-17 klbs RPM: 92-130 GPM: 579-588 PP: 667-700psi		610									Carbide checked @ 575m Ave hole size 13.8" Claystone:med dk gry,occ med gn gy, sli-occ v slty, occ comm disp vf altd felds grs, tr blk carb flks & blk coal det,tr micmic,mod hd, sbfiss.
		620									Sandstone:lt grn gy, slty-vf, sbang-sbrnd,mod srted, strg sil cmt & wk calc cmt, abdt wh argill mtx - mtx supported, abdt off wh altd felds grs, com grn gy & tr rd liths,tr f blk ca
		63									hd, no vis por, no oil fluor.



FORMATION EVALUATION LOG

FORMATION EVALUATION LOG												
RATE OF PENETRATION		INTERPRETED LITHOLOGY	MD meters 1:500	LITHOLOGY	CORE	OIL SHOWS	TOTAL GAS	CHROMATOGRAPH				REMARKS
ROP (0-100m/hr)								1	Methane ppm			
100 80 70 60 50 40 30 20 10							TOTAL GAS	1	Ethane ppm			10000
Backup ROP (100-200m/hr)								1	Propane ppm			
200 190 180 170 160 150 140 130 120 110							BACKUP TOTAL GAS	1	iso-Butane ppm			10000
WOB (klb)								1	n-Butane ppm			
5 10 15 20 25 30 35 40 45 50							unit	1	iso-Pentane ppm			10000
TORQUE AVG								1	n-Pentane ppm			
5 10 15 20 25 30 35 40 45 50							unit	1	10 100 1000 10000			
								1				