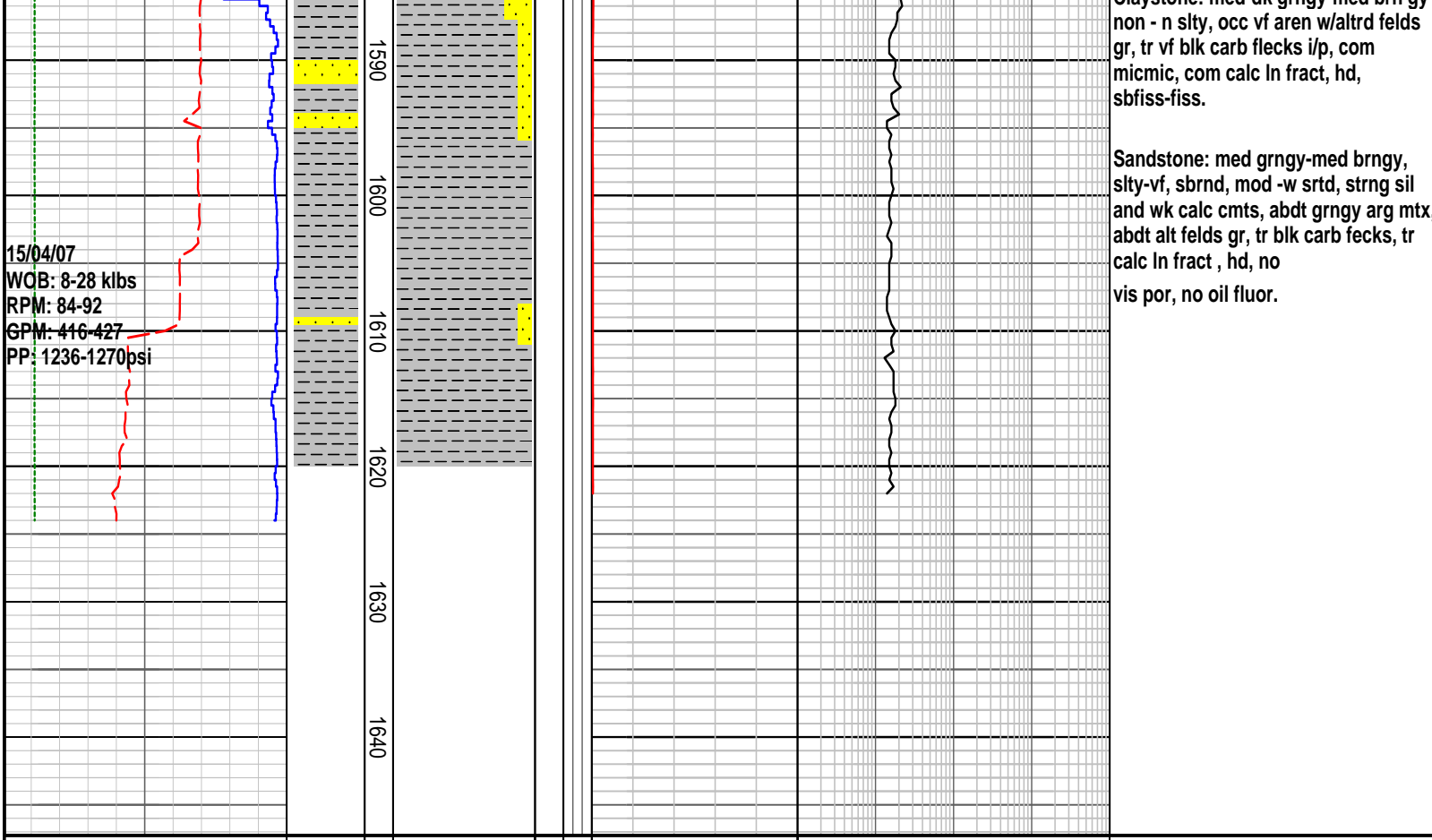




Created : 16/Apr/2007 6:14:07 AM



RATE OF PENETRATION		INTERPRETED LITHOLOGY	MD meters 1:500	LITHOLOGY	CORE	OIL SHOWS	TOTAL GAS	CHROMATOGRAPH	REMARKS
ROP (0-100m/hr)							TOTAL GAS	1 Methane ppm 10000	
Backup ROP (100-200m/hr)							1 Ethane ppm 10000		
WOB (klb)							1 Propane ppm 10000		
TORQUE AVG							1 iso-Butane ppm 10000		
							1 n-Butane ppm 10000		
							1 iso-Pentane ppm 10000		
							n-Pentane ppm		
							10 100 1000 10000		
WOB: 28-29 klbs RPM: 80-88 GPM: 428-433 PP: 1233-1293psi			90						MW 9.0 Vis 34 PV/YP 7/7 Gels 1/2 Sol 4.6 Sd Tr Cl 2000
14/04/07			1500					Cuttings Gas: C1: 6 ppm, C2+:0	Claystone: med dk grngy-med brngy, non - v slty, occ vf aren w/ altrd felds gr, tr blk carb flecks, tr calc ln fracs, hd sbfiss-fiss
			1510						
			1520						
			1530						Sandstone: med grngy-med brngy, slty-vf, sbrnd, mod -w srtd, strng sil and wk calc cmts, abdt grngy arg mtx abdt alt felds gr, tr blk carb fecks, tr calc ln fract , hd, no vis por, no oil fluor.
			1540						
WOB: 28-32 klbs RPM: 82-88 GPM: 420-427 PP: 1225-1320psi			1550						Claystone: lt - med grn gy- med gy, non-occ v slty, occ vf aren w/ altrd felds gr, tr v f blk carb flecks i/p, com micmic, com calc ln fract, hd, sbfiss - fiss. Survey@1554m,37 Deg. AZI: 110 Deg
			1560						
			1570						Sandstone: med grn gy-med brn gy, slty-vf, sbrnd, mod -w srtd, v strong siland wk calc cmt, abdt grn gy sil mtx, abdt altrd feld gr, tr blk carb flecks, tr calc ln fract, v hd, no vis por, no oil fluor. Carbide Lag Checked @ 1575m Ave hole size 10.0"
			1580						
									Claystone: med-dk grngy-med brn gy



FORMATION EVALUATION LOG

RATE OF PENETRATION										LITHOLOGY	INTERPRETED LITHOLOGY	MD meters 1:500		LITHOLOGY	CORE	OIL SHOWS	TOTAL GAS		CHROMATOGRAPH				REMARKS
ROP (0-100m/hr)																	TOTAL GAS		Methane ppm				
Backup ROP (100-200m/hr) <td colspan="2">TOTAL GAS<td colspan="4">Ethane ppm</td></td>										TOTAL GAS <td colspan="4">Ethane ppm</td>		Ethane ppm											
WOB (klb) <td colspan="2">unit<td colspan="4">Propane ppm</td></td>										unit <td colspan="4">Propane ppm</td>		Propane ppm											
TORQUE AVG <td colspan="2">BACKUP TOTAL GAS<td colspan="4">iso-Butane ppm</td></td>										BACKUP TOTAL GAS <td colspan="4">iso-Butane ppm</td>		iso-Butane ppm											
										unit <td colspan="4">n-Butane ppm</td>		n-Butane ppm											
												iso-Pentane ppm											
												n-Pentane ppm											