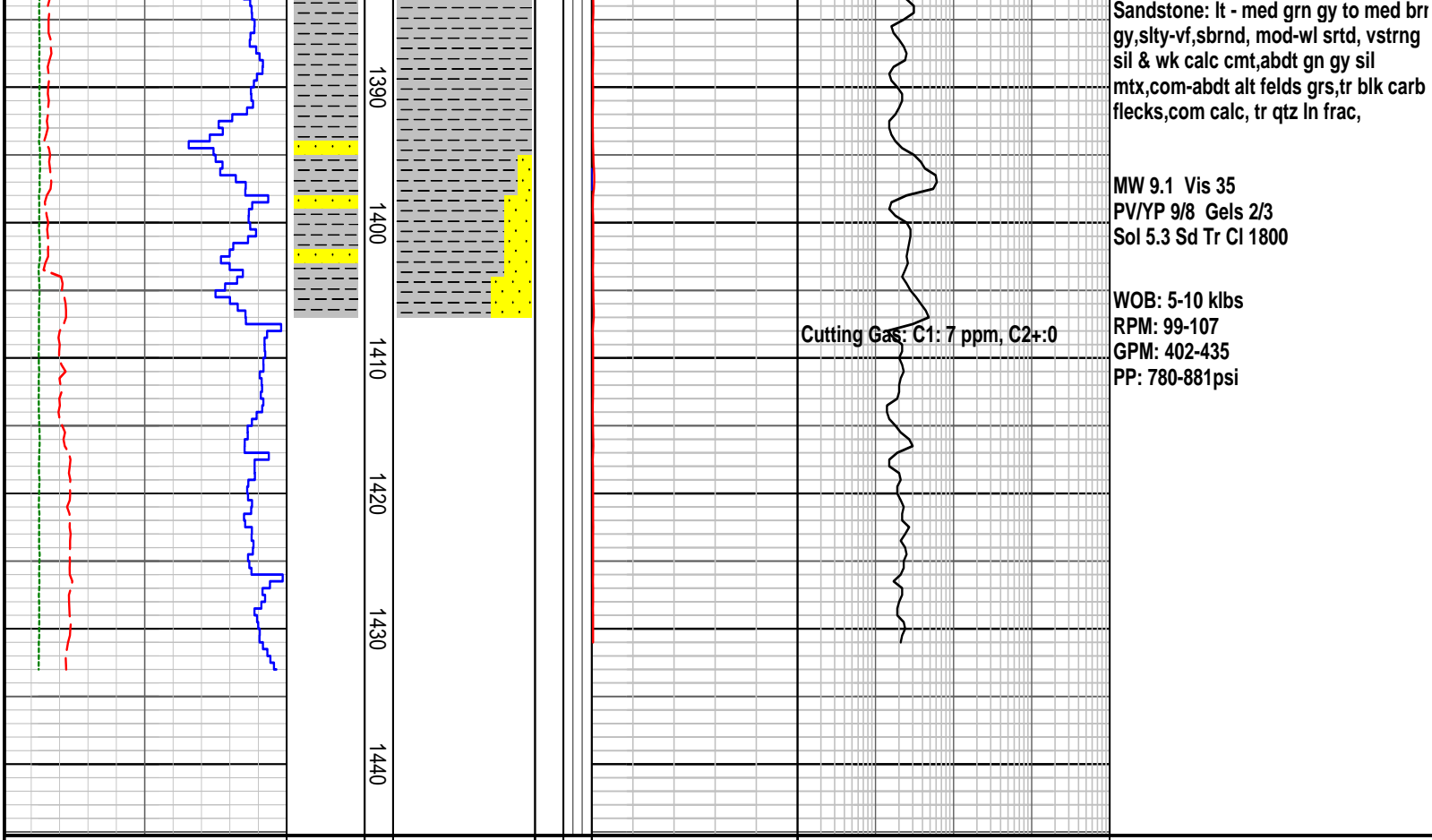




Created : 13/Apr/2007 6:20:15 AM

[illegible]



Sandstone: lt - med grn gy to med brn gy,slty-vf,sbrnd, mod-wl srted, vstrng sil & wk calc cmt,abdt gn gy sil mtz,com-abdt alt felds grs,tr blk carb flecks,com calc, tr qtz ln frac,

MW 9.1 Vis 35
PV/YP 9/8 Gels 2/3
Sol 5.3 Sd Tr Cl 1800

WOB: 5-10 klbs
RPM: 99-107
GPM: 402-435
PP: 780-881psi

FORMATION EVALUATION LOG

RATE OF PENETRATION										LITHOLOGY	INTERPRETED LITHOLOGY	MD meters 1:500		LITHOLOGY	CORE	OIL SHOWS	TOTAL GAS				CHROMATOGRAPH				REMARKS
ROP (0-100m/hr)																	Methane ppm								
100 90 80 70 60 50 40 30 20 10																	1 10000								
Backup ROP (100-200m/hr)																	1 Ethane ppm 10000								
200 190 180 170 160 150 140 130 120 110																	1 Propane ppm 10000								
WOB (klb)										1 iso-Butane ppm 10000															
5 10 15 20 25 30 35 40 45 50										1 n-Butane ppm 10000															
TORQUE AVG										1 iso-Pentane ppm 10000															
5 10 15 20 25 30 35 40 45 50										1 n-Pentane ppm 10000															
										10 100 1000 10000															