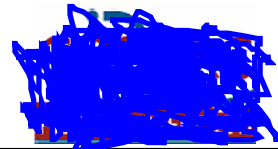
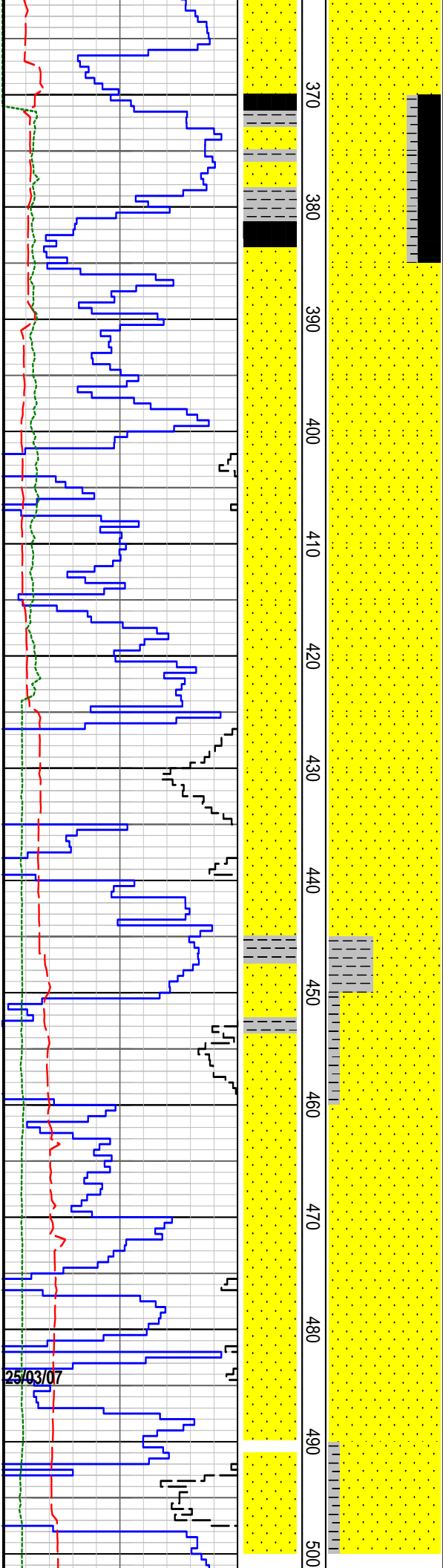




Created : 26/Mar/2007 7:52:12 AM



RATE OF PENETRATION				LITHOLOGY	INTERPRETED LITHOLOGY	MD meters 1:500	LITHOLOGY	CORE	OIL SHOWS	TOTAL GAS	CHROMATOGRAPH	REMARKS			
ROP (0-50m/hr)										TOTAL GAS unit	Methane ppm				REMARKS
Backup ROP (50-200m/hr)											10000				
WOB (klb)				TORQUE AVG				10000				REMARKS			
5 10 15 20 25 30 35 40 45 50				5 10 15 20 25 30 35 40 45 50				10 100 1000 10000							
Bit #1 GX-1CV 16" Jets 18x22x22															



Survey @ 357m, 11 Deg.

Claystone: lt-med gry to med brn, v carb i/p, occ v fine aren, v sft, v disp, non fiss.

Sandstone: lt brn gry, vf-grit, dom v c, ang-sbang, mod srtd, v wk silca cmt, tr med-dk brn argill mtx, clr-opaq qtz gr, tr blk coal det, uncons, v gd infer por, no oil fluor.

Sandstone: lt brn gry, vf-grit, dom v c, ang-sbang, mod srtd, v wk silca cmt, tr-com med-dk brn argill mtx, clr-opaq qtz gr, tr blk coal det, uncons, v gd infer por, no oil fluor.

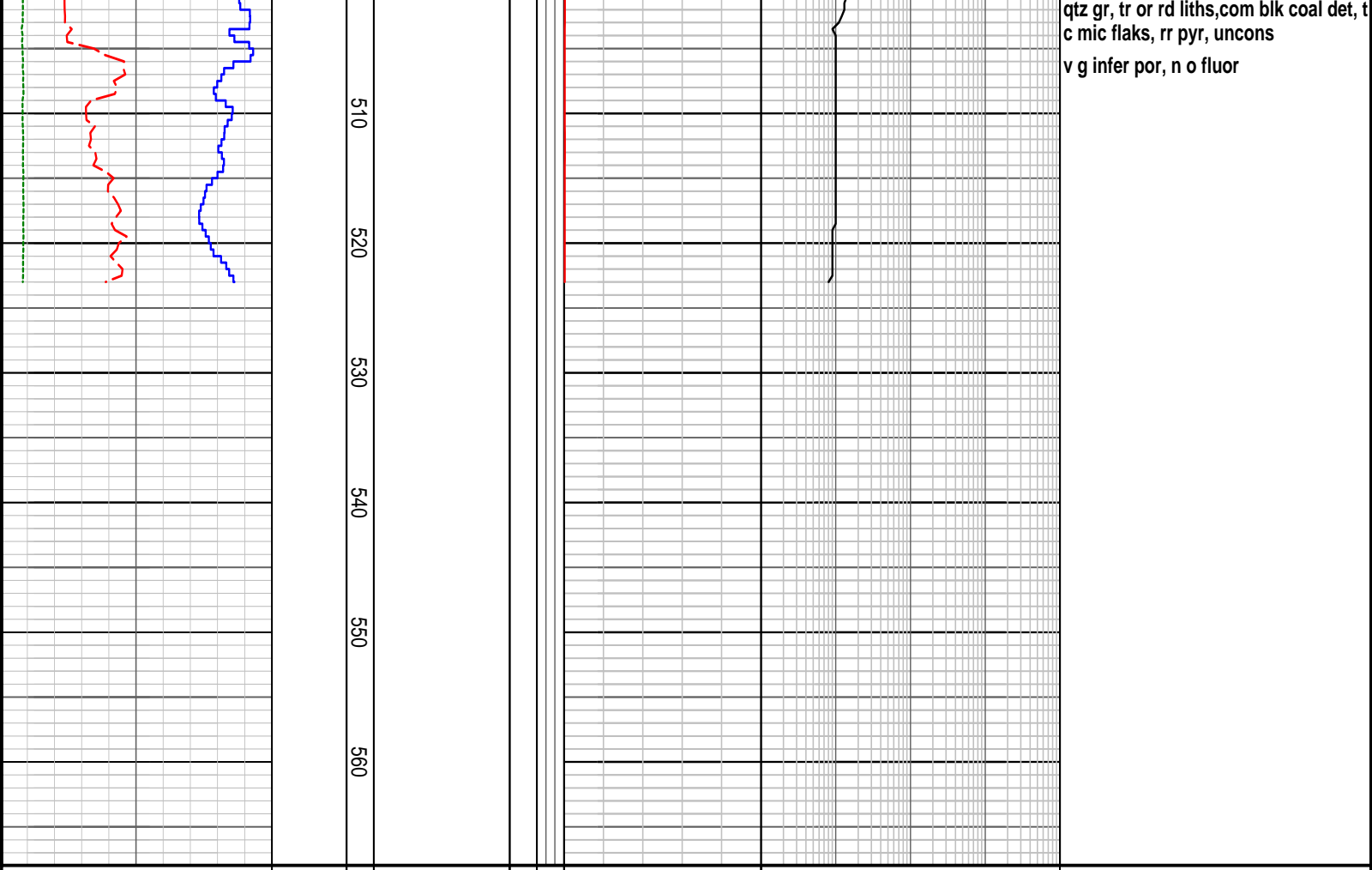
Sandstone: lt brn gry, vf-grit, dom v c, ang-sbang, mod srtd, v wk silca cmt, tr-com med-dk brn argill mtx, clr-opaq qtz gr, tr blk coal det, tr c mica flks, uncons, v gd infer por, n

Survey @ 414m, 9 Deg.

Sandstone: lt brn gry, vf-grit, dom v c, ang-sbang, mod srtd, v wk silca cmt, tr-com med-dk brn argill mtx, clr-opaq qtz gr, tr org rd liths, com blk coal det, tr c mica flks, uncons, v gd infer por, no oil fluor.

Sandstone: lt brn gry, vf-grit, dom v c, ang-sbang, mod srtd, v wk silca cmt, tr-com med-dk brn argill mtx, clr-opaq qtz gr, tr blk coal det, tr c mica flks, uncons, v gd infer por, no oil fluor

Sandstone: lt brn gry, vf-vc, dom c, ang-sbang, mod srtd, v wk sil cmt, tr-com med-dk brn argill mtx, clr-opaq



qtz gr, tr or rd liths, com blk coal det, t
c mic flaks, rr pyr, uncons
v g infer por, n o fluor

FORMATION EVALUATION LOG

RATE OF PENETRATION												LITHOLOGY	INTERPRETED LITHOLOGY	MD meters 1:500		LITHOLOGY	CORE	OIL SHOWS	TOTAL GAS	CHROMATOGRAPH				REMARKS					
ROP (0-50m/hr)																				1	Methane ppm				10000				
																				1	Ethane ppm				10000				
Backup ROP (50-200m/hr)																				1	Propane ppm				10000				
																				1	iso-Butane ppm				10000				
WOB (klb)																				1	n-Butane ppm				10000				
TORQUE AVG																				1	iso-Pentane ppm				10000				
																				n-Pentane ppm									
																				10	100	1000	10000						
50	45	40	35	30	25	20	15	10	5																				
200	185	170	155	140	125	110	95	80	65																				