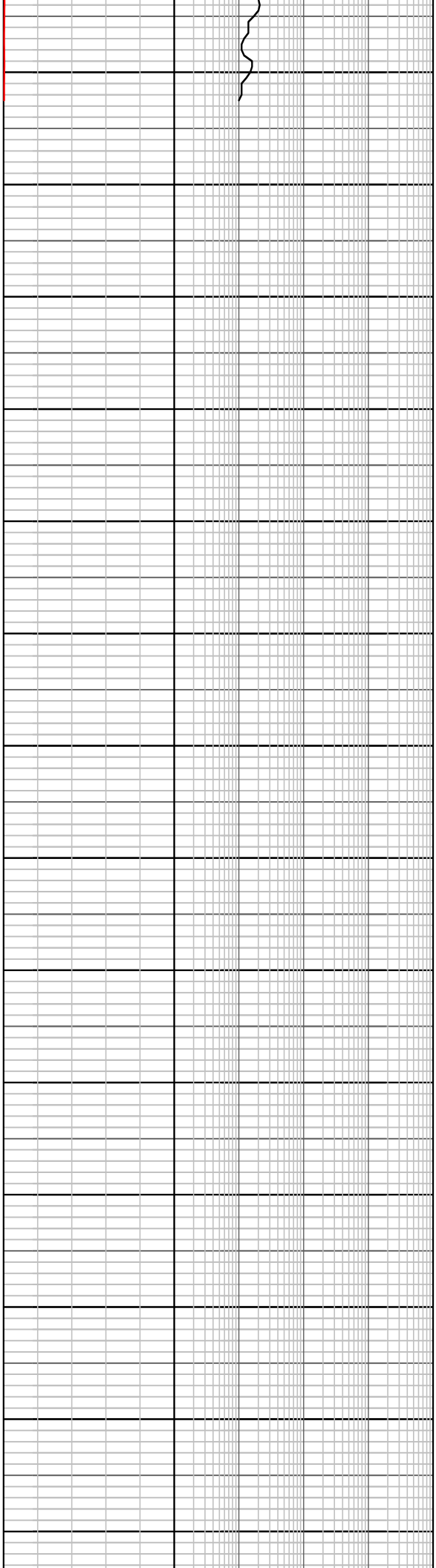


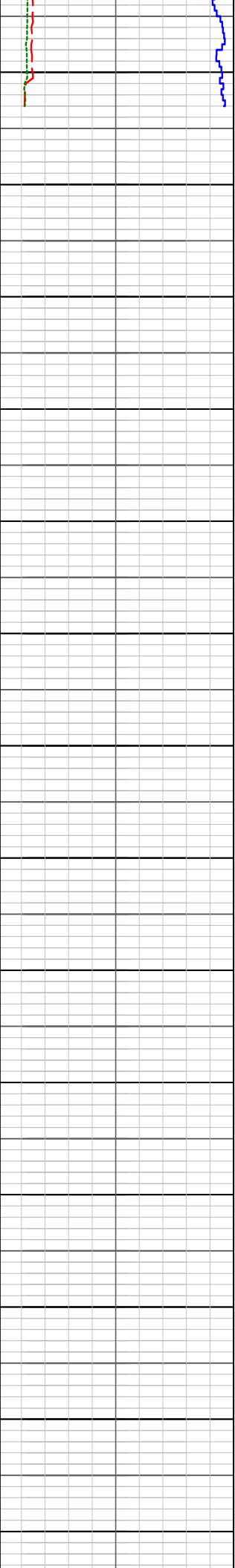


# FORMATION EVALUATION LOG

RATE OF PENETRATION		MD meters 1:500	LITHOLOGY	OIL SHOWS	TOTAL GAS	CHROMATOGRAPH	REMARKS
ROP (0-100m/hr)							
Backup ROP (100-200m/hr)							
WOB (klb)							
TORQUE AVG							
INTERPRETED LITHOLOGY							
WOB: 28 - 35 klbs		1250					rr calc ln fract, v hd, no vis por, no oil fluor.
RPM: 61 - 81		1260					MW 9.35 Vis 45
GPM: 535 - 546		1270					PV/YP 15/20 Gels 4/6
PP: 1043 - 1133psi		1280					Sol 7.1 Sd Tr Cl 1100
06/04/07		1290					Claystone: med-dk gn gy- med gy- dk brn gy, mod slty i/p, tr vf altd felds i/p, tr vf blk carb flecks, tr-com micmic, tr calc ln fract, hd, sbfiss.
WOB: 28-33klbs		1300					Claystone: lt-dk gn gy - med gy- med brn gy,non - occ slty i/p, tr vf altd felds i/p, tr vf blk carb flecks i/p, com micmic, rr calc ln fract, hd, sbfiss.
RPM: 70-84		1310					Carbide Lag Checked @ 1288m Ave hole size 15.2"
GPM: 533-551		1320					Survey @ 1286m, 15 Deg, S25E
PP: 999-1230psi		1330					Sandstone: lt-med grn gy,slty-vf,sbrnd, mod-wl srtld, strng sil cmt, tr wk calc cmt,abdt gn gy sil mtX, abdt atrd felds grs, com grn gy & tr rd liths.
07-10/04/07		1340					tr blk carb flks, rr calc ln frac, v hd,no vis por,no oil fluor.
Bit #4 REED PDC 8 1/2"							12.25" Hole TD 1298m. Reached on 7th April 2007 at 15:00 hrs.
Jets 5x14							9 5/8" Casing Shoe Set At : 1295m
in 1298m/out XXXX m							P I T @ 1301m MW 9.1
XXXm/XX.Xhrs							ppg,1100psi,EMW = 14.1 ppg
TXBX In gauge							Claystone: med gy to med grn gy,n-occ vsly,occ vf arn w/ alt felds grs, tr vf blk carb flecks i/p,com micmic,tr to com cal ln fract, hrd,subfiss to fiss.
11/04/07							Sandstone: med grn gy,slty-vf,sbrnd, mod-wl srtld, vstrng sil & wk calc cmt,abdt gn gy sil mtX,com-abdt atrd felds grs,tr blk carb flecks,com calc lm frac,v hd,no vis por,no oil flo



1350 1360 1370 1380 1390 1400 1410 1420 1430 1440 1450 1460 1470 1480







[illegible]

1770	1780	1790	1800	1810	1820	1830	1840	1850	1860	1870	1880	1890	1900
------	------	------	------	------	------	------	------	------	------	------	------	------	------

[illegible]



















[illegible][illegible]

































































[illegible]