



Company : Petro Tech Pty. Ltd

Well : Hazelwood-1

Interval : 212.00 - 544.70 meters

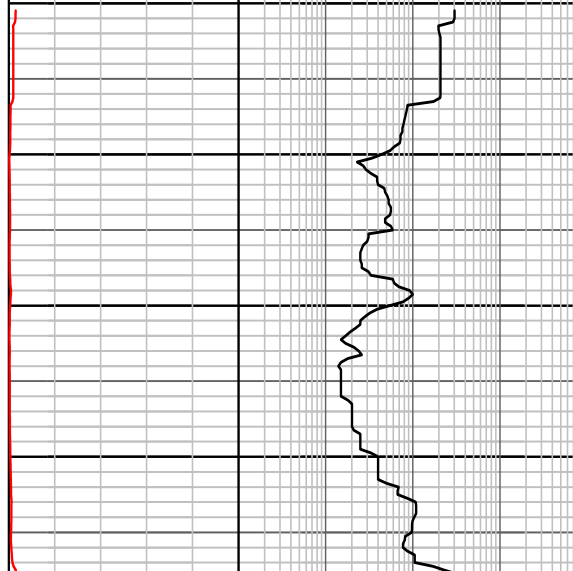
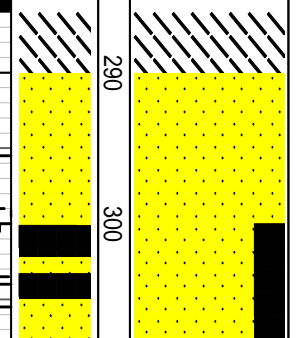
Created : 26/Mar/2007 8:58:34 AM

INTEQ

FORMATION EVALUATION LOG

RATE OF PENETRATION		MD meters ±.500	LITHOLOGY	CORE	OIL SHOWS	TOTAL GAS	CHROMATOGRAPH	REMARKS
ROP (0-50m/hr)	INTERPRETED LITHOLOGY					10 20 30 40 50 unit	1 Methane ppm 10000 1 Ethane ppm 10000 1 Propane ppm 10000 1 iso-Butane ppm 10000 1 n-Butane ppm 10000 1 iso-Pentane ppm 10000 n-Pentane ppm	
50 45 40 35 30 25 20 15 10 5	LITHOLOGY	220						
Backup ROP (50-200m/hr)								
200 185 170 140 125 110 95 80 65	LITHOLOGY	230						
WOB (klb)								
5 10 15 20 25 30 35 40 45 50	LITHOLOGY	240						
TORQUE AVG								
5 10 15 20 25 30 35 40 45 50	LITHOLOGY	250						
	LITHOLOGY	260						Survey @ 258m, 8 Deg plus
	LITHOLOGY	270						
	LITHOLOGY	280						Hazelwood-1: 16" Hole start drilling from 286m, on 25th March 2007, at 3:00 hrs 18" Casing Shoe Set At : 286m
	LITHOLOGY	290						Sandstone:ltbrn, vf-grit, dom v c-grit, ang-sbang, mod-w srtd, v wk sil cmnt, tr-med-dkbrn arg mtx, clr-opaq qtz gr,
	LITHOLOGY	300						tr blk coal det, rr pyr, unconsol, v g infer por, n oil fluor.

Bit #1 SMITH GX-1CV 16
Jets 18x22x22

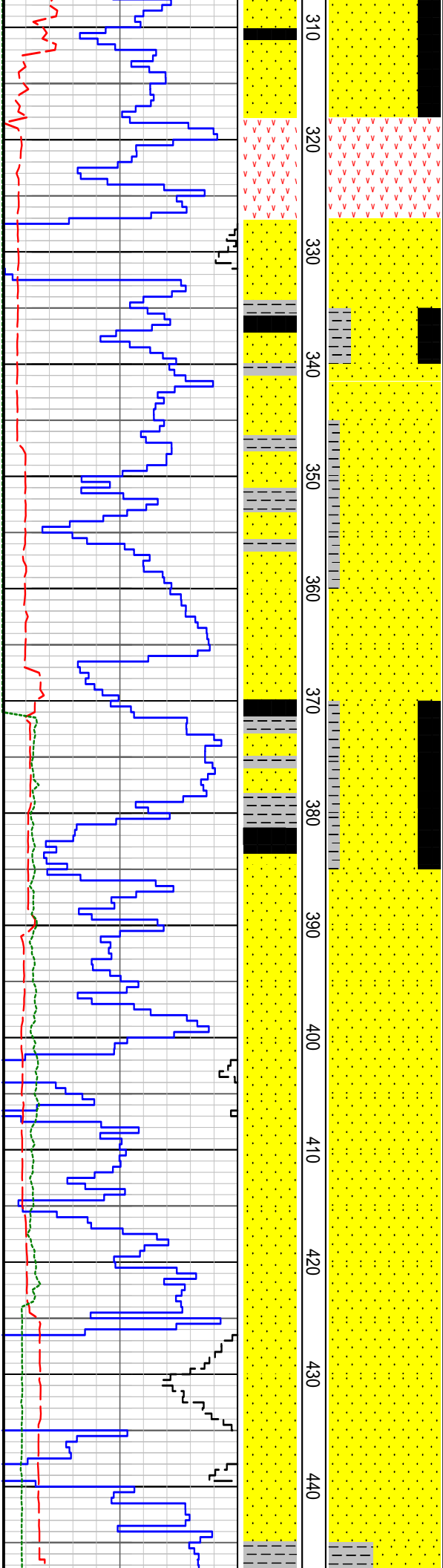


Survey @ 258m, 8 Deg plus

Hazelwood-1: 16" Hole start drilling from 286m, on 25th March 2007, at 3:00 hrs
18" Casing Shoe Set At : 286m

Sandstone:ltbrn, vf-grit, dom v c-grit, ang-sbang, mod-w srtd, v wk sil cmnt, tr-med-dkbrn arg mtx, clr-opaq qtz gr,

tr blk coal det, rr pyr, unconsol, v g infer por, n oil fluor.



310
320
330
340
350
360
370
380
390
400
410
420
430
440

Coal: v dkbrn-blk, irreg fract, ethy lstr, frm - hd.

Survey @ 319m, 12 Deg.
Basalt: (weathered), lt-med grngy-ltbrn, speckled, mic, weathered i/p-kaol, hd-v hd.

Sandstone:ltbrn, vf-vc, dom c, ang-sbrnd, mod srtd, v wk sil cmt, tr med-dkbrn argill mtx, clr-opaq qtz gr, tr blk coal det, unconsol, v g infer por, no oil fluor.

Sandstone:lt brn, vf-grit, dom v c, ang-sbang, mod srtd, v wk sil cmt, tr med-dk brn argill mtx, clr-opaq qtz gr, tr blk coal det, unconsol, v gd infer por, no oil fluor.

Claystone:lt-med gry-med brn,v carb i/p,occ v fine aren,v sft,v disp,non fiss.

Coal: v dk brn-blk,sli-mod argill,irregular fract,ea lust,frm-hd.

Sandstone: vlt gry-v lt brn gry,vf-grit, dom v c, ang-sbang, mod srtd, v wk sil cmt, tr med-dk brn argill mtx, clr-opaq qtz gr, tr blk coal det, tr crs mica flks, uncons,v gd infer

Survey @ 357m, 11 Deg.
Claystone: lt-med gry to med brn,v carb i/p,occ v fine aren,v sft,v disp,non fiss.

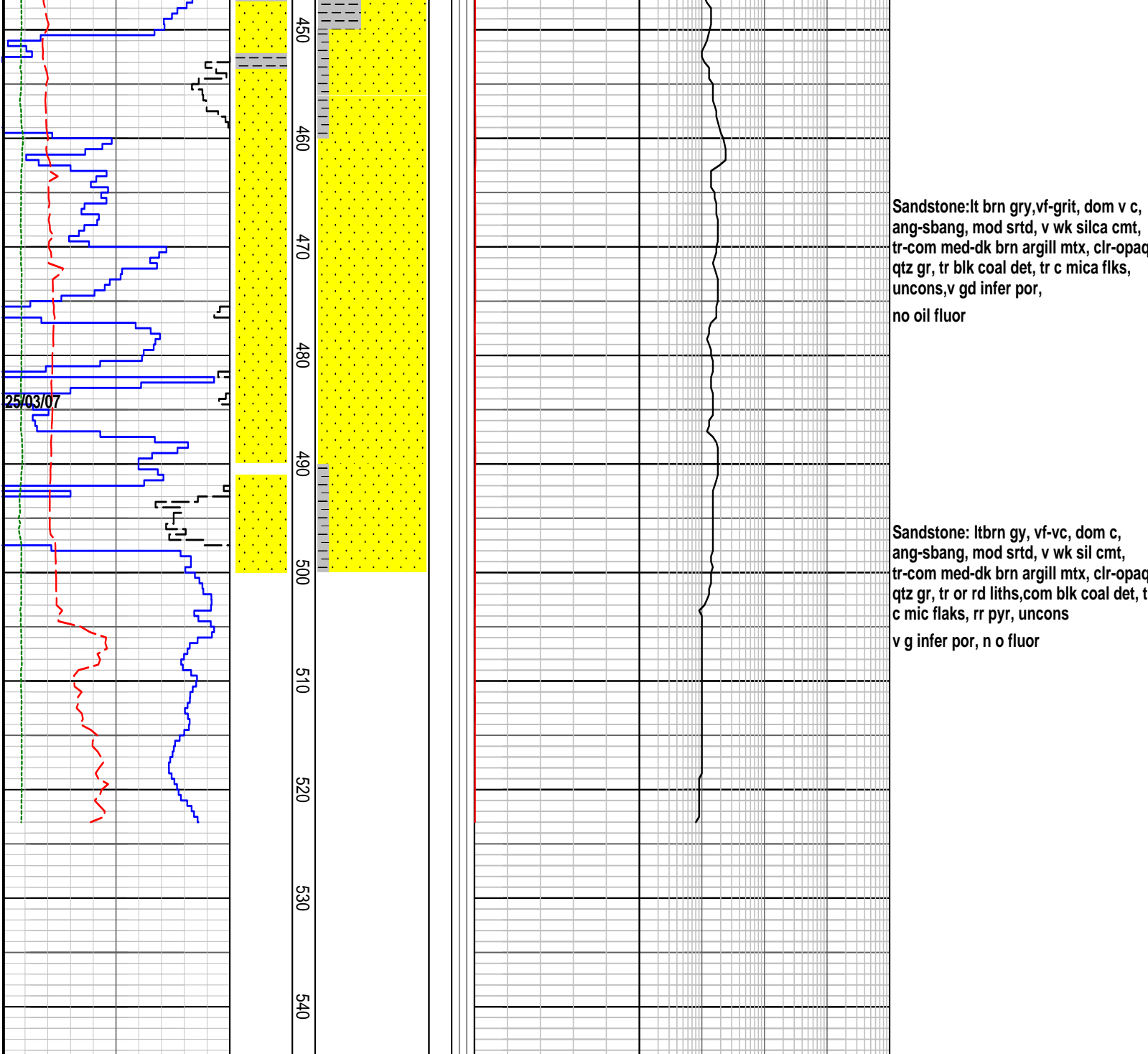
Sandstone:lt brn gry,vf-grit, dom v c, ang-sbang, mod srtd, v wk silca cmt, tr med-dk brn argill mtx, clr-opaq qtz gr, tr blk coal det, uncons,v gd infer por, no oil fluor.

Sandstone:lt brn gry,vf-grit, dom v c, ang-sbang, mod srtd, v wk silca cmt, tr-com med-dk brn argill mtx, clr-opaq qtz gr, tr blk coal det, uncons,v gd infer por, no oil fluor.

Sandstone:lt brn gry,vf-grit, dom v c, ang-sbang, mod srtd, v wk silca cmt, tr-com med-dk brn argill mtx, clr-opaq qtz gr, tr blk coal det, tr c mica flks, uncons,v gd infer por, n

Survey @ 414m, 9 Deg.

Sandstone:lt brn gry,vf-grit, dom v c, ang-sbang, mod srtd, v wk silca cmt, tr-com med-dk brn argill mtx, clr-opaq qtz gr, tr org rd liths, com blk coal det tr c mica flks,uncons, v gd infer por, no oil fluor.



FORMATION EVALUATION LOG

RATE OF PENETRATION	LITHOLOGY	MD meters 1:500	LITHOLOGY	CORE	OIL SHOWS	TOTAL GAS	CHROMATOGRAPH	REMARKS
ROP (0-50m/hr) Backup ROP (50-200m/hr) WOB (klb) TORQUE AVG						TOTAL GAS unit	Methane ppm Ethane ppm Propane ppm iso-Butane ppm n-Butane ppm iso-Pentane ppm n-Pentane ppm	
5 10 15 20 25 30 35 40 45 50 50 45 40 35 30 25 20 15 10 5 5 10 15 20 25 30 35 40 45 50 5 10 15 20 25 30 35 40 45 50						10 20 30 40 50	1 10000 1 10000 1 10000 1 10000 1 10000 1 10000 10 100 1000 10000	