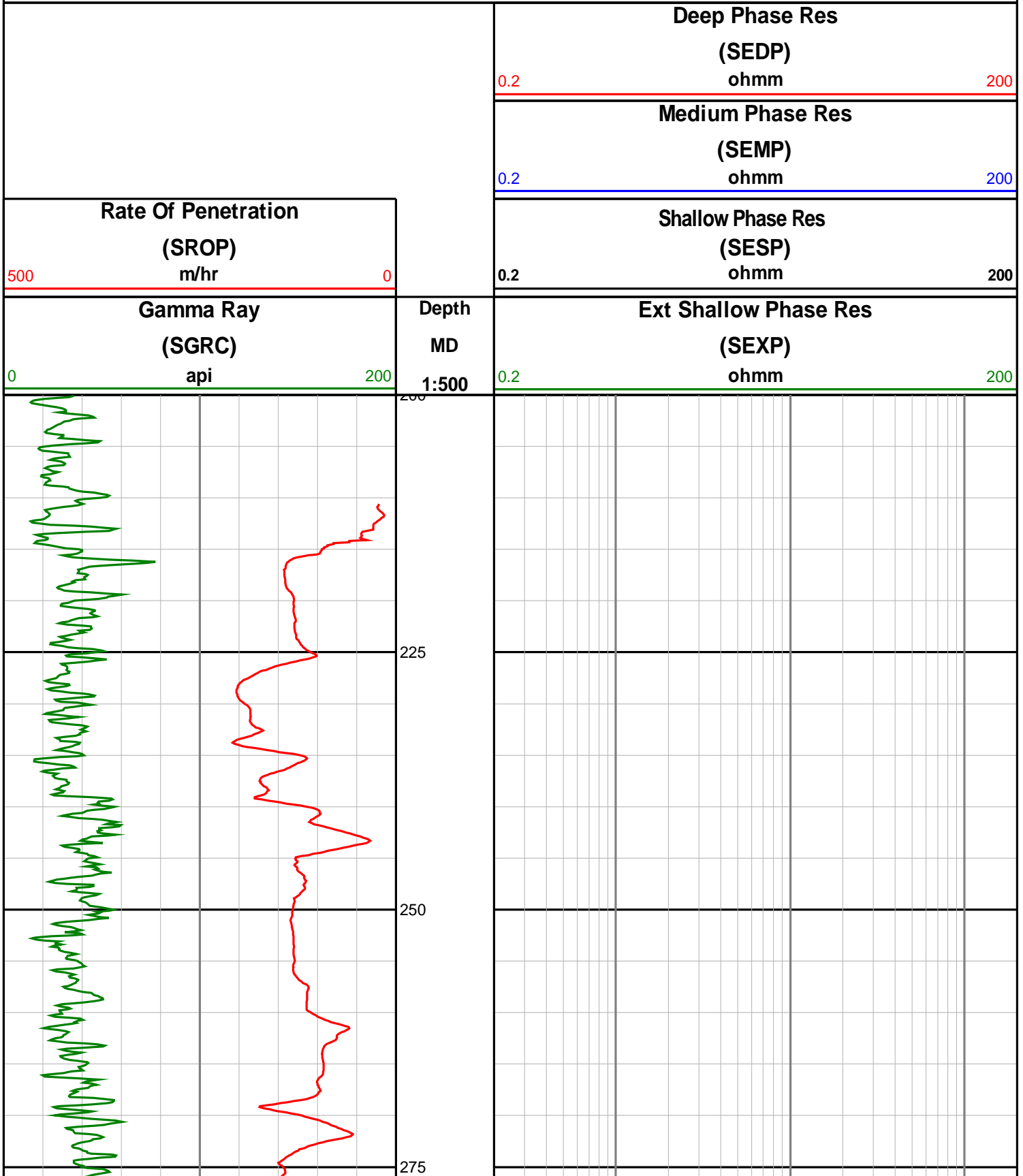
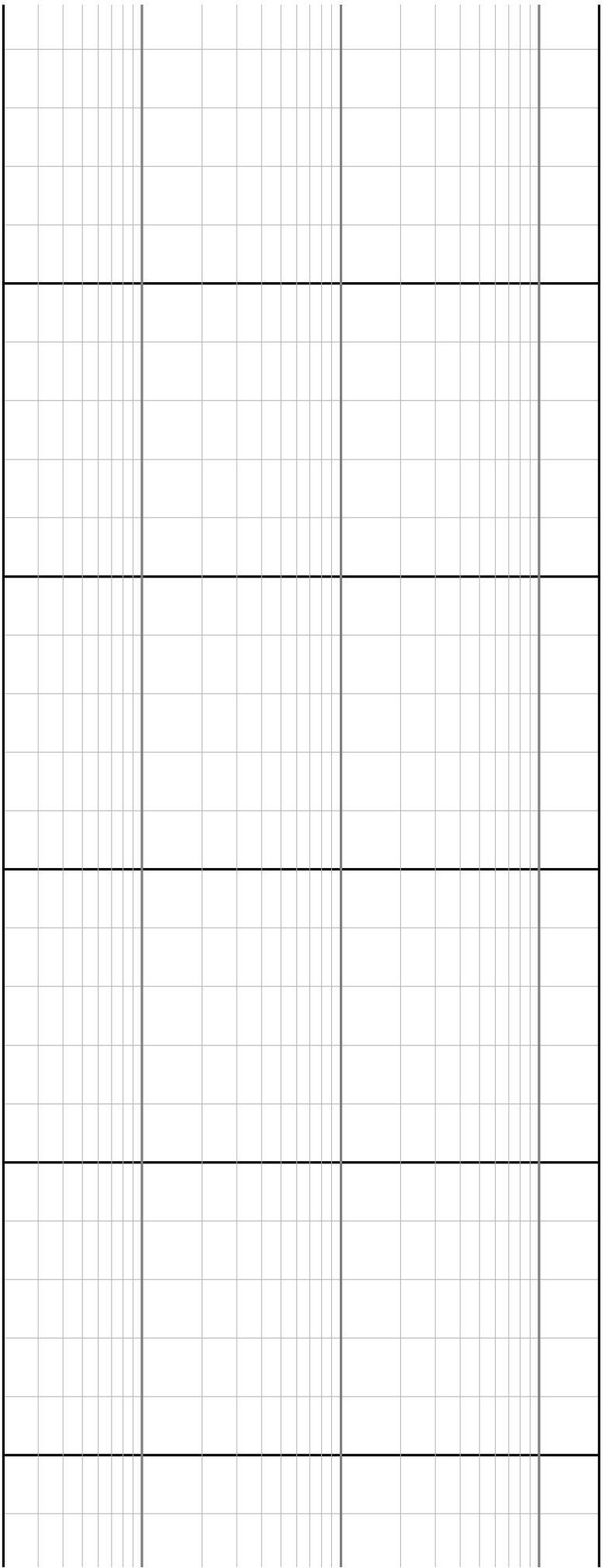
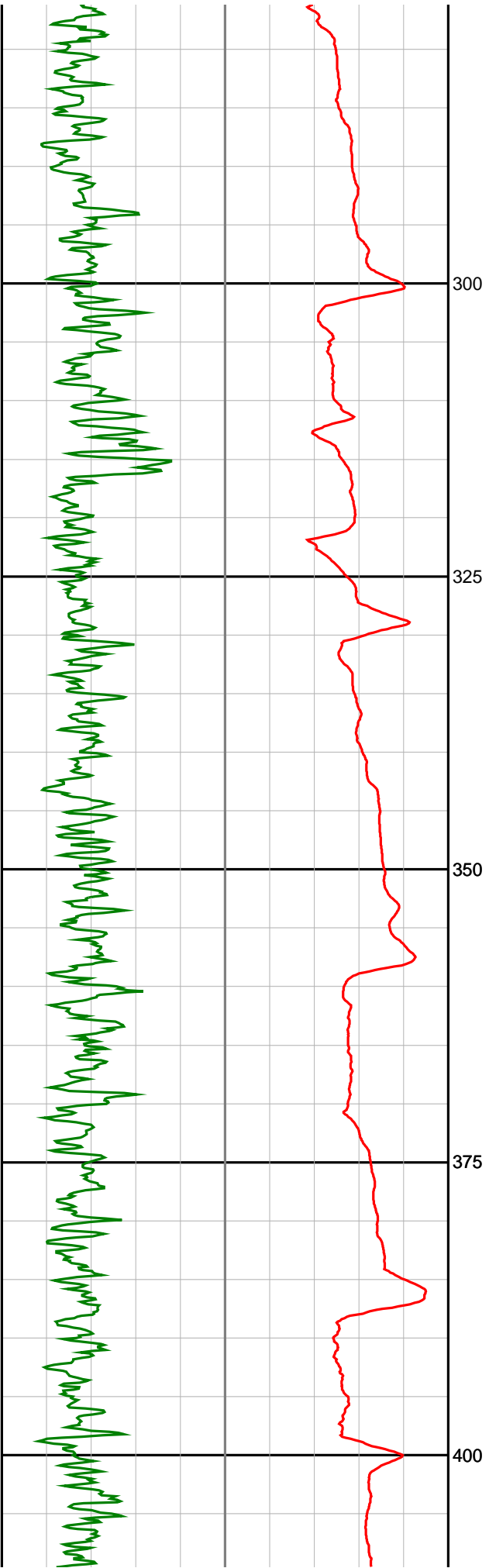


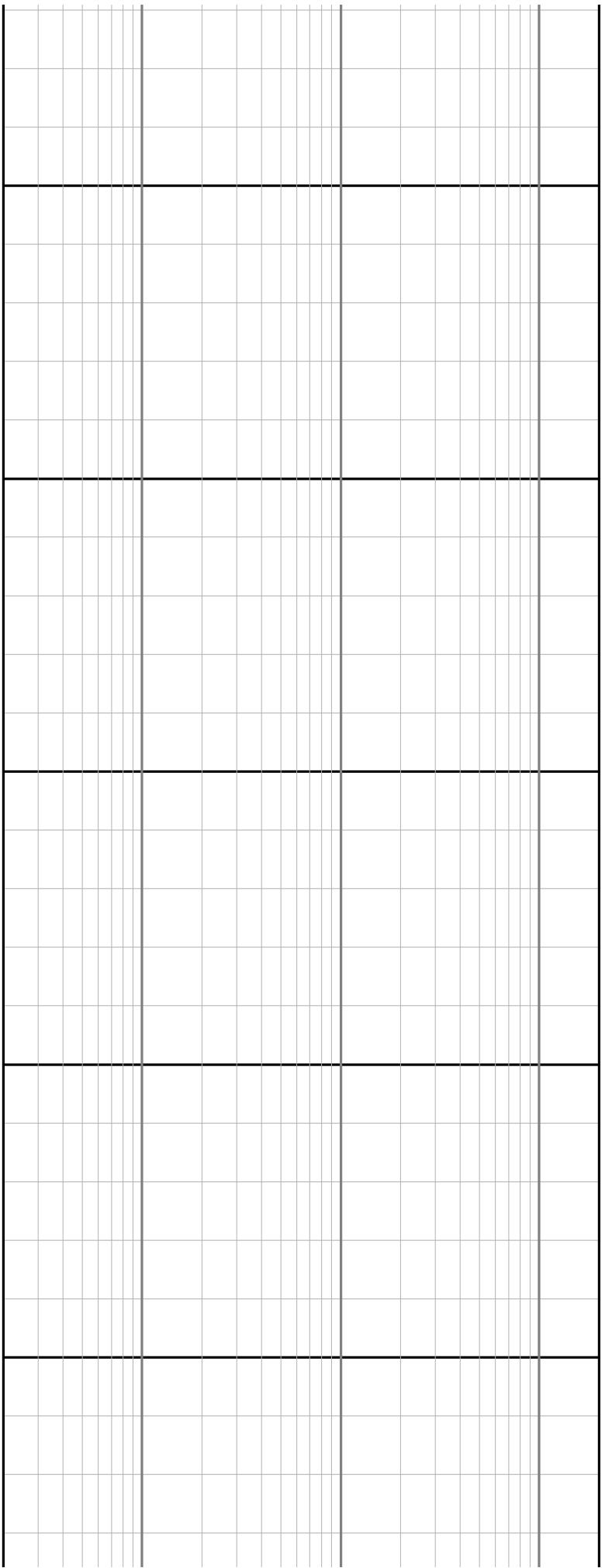
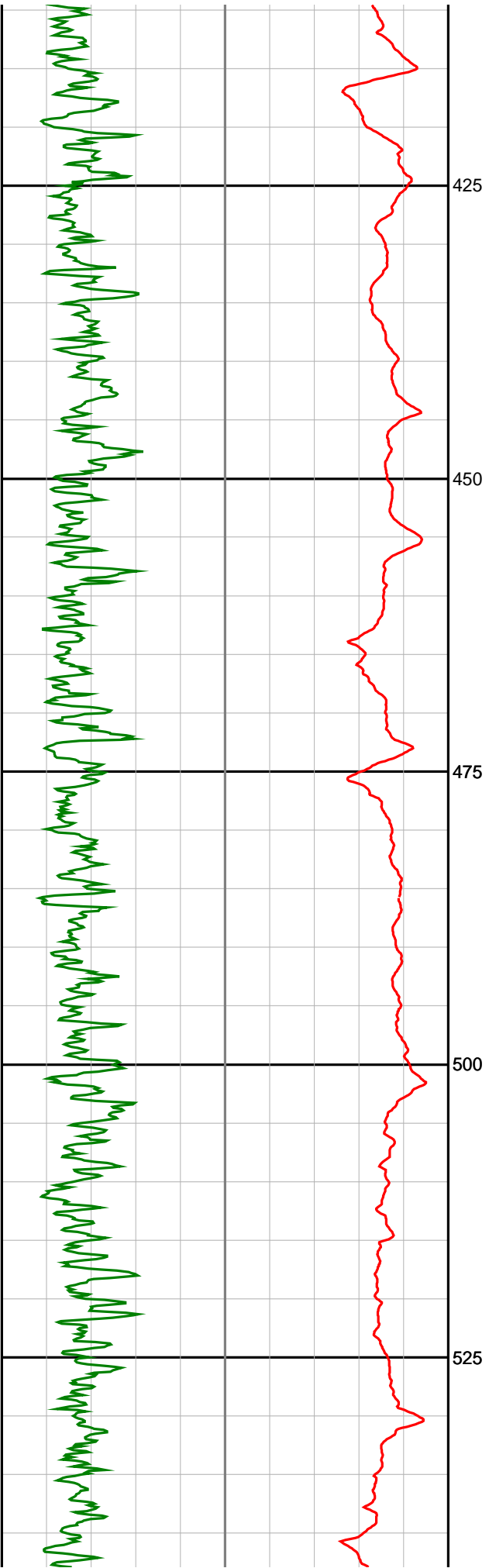
Anzon Australia Ltd

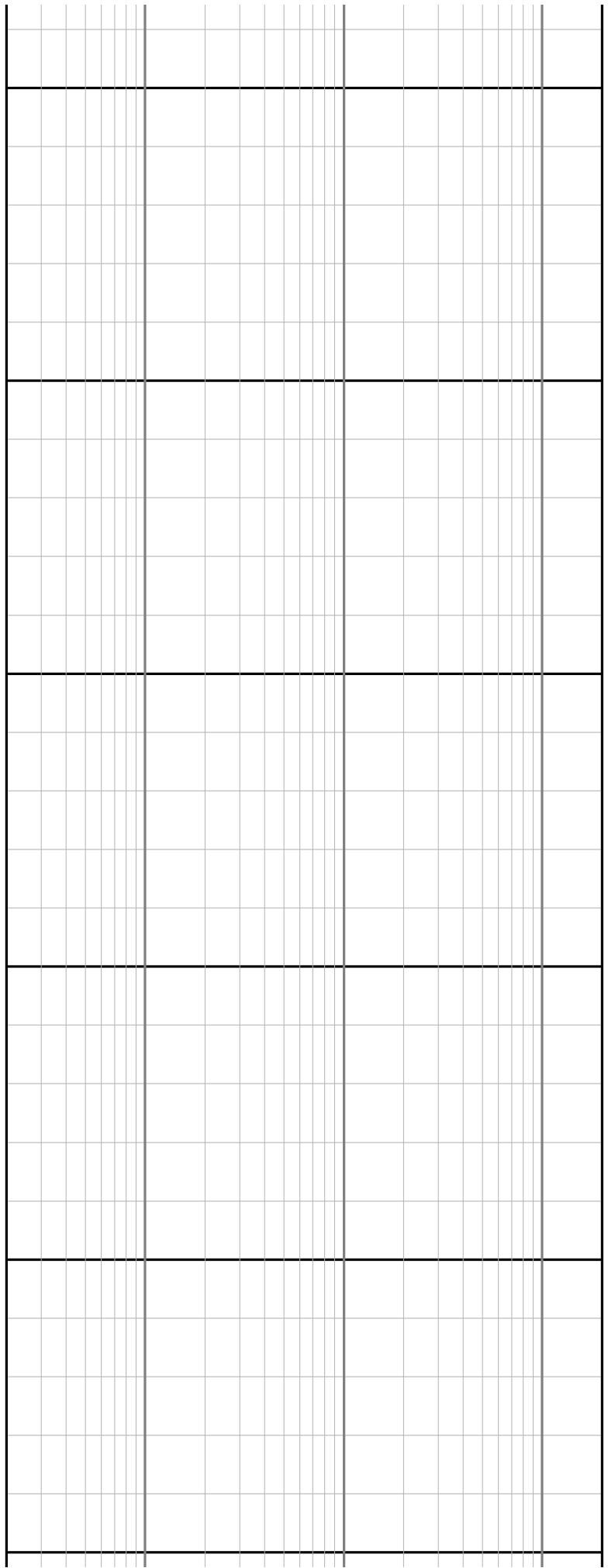
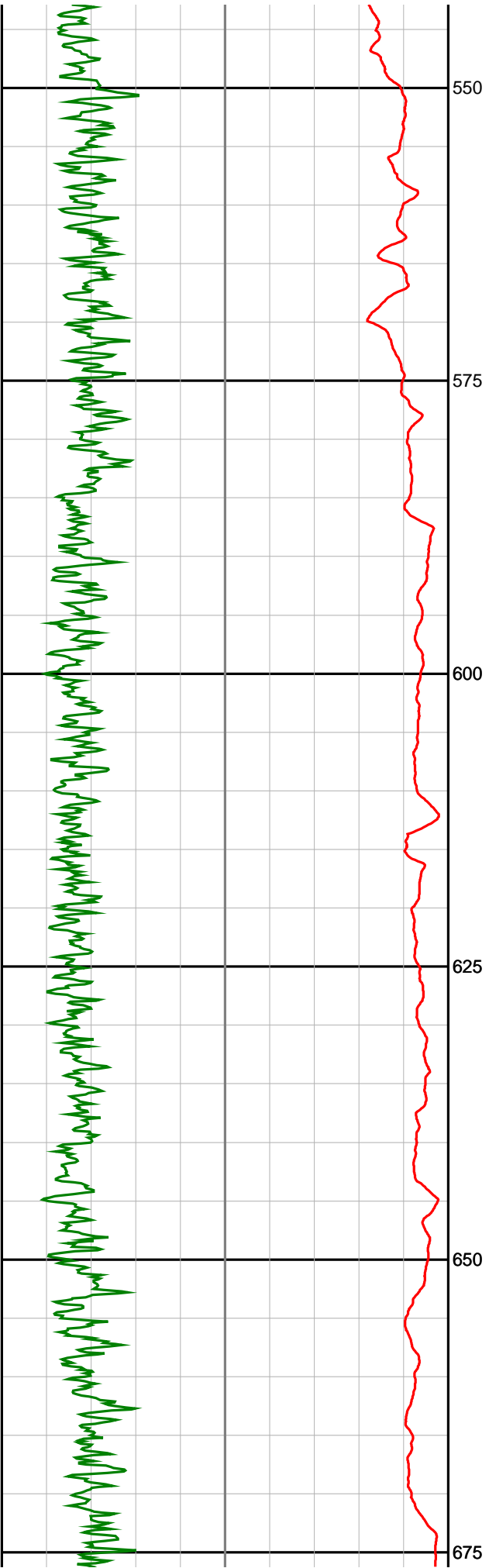
Basker-4

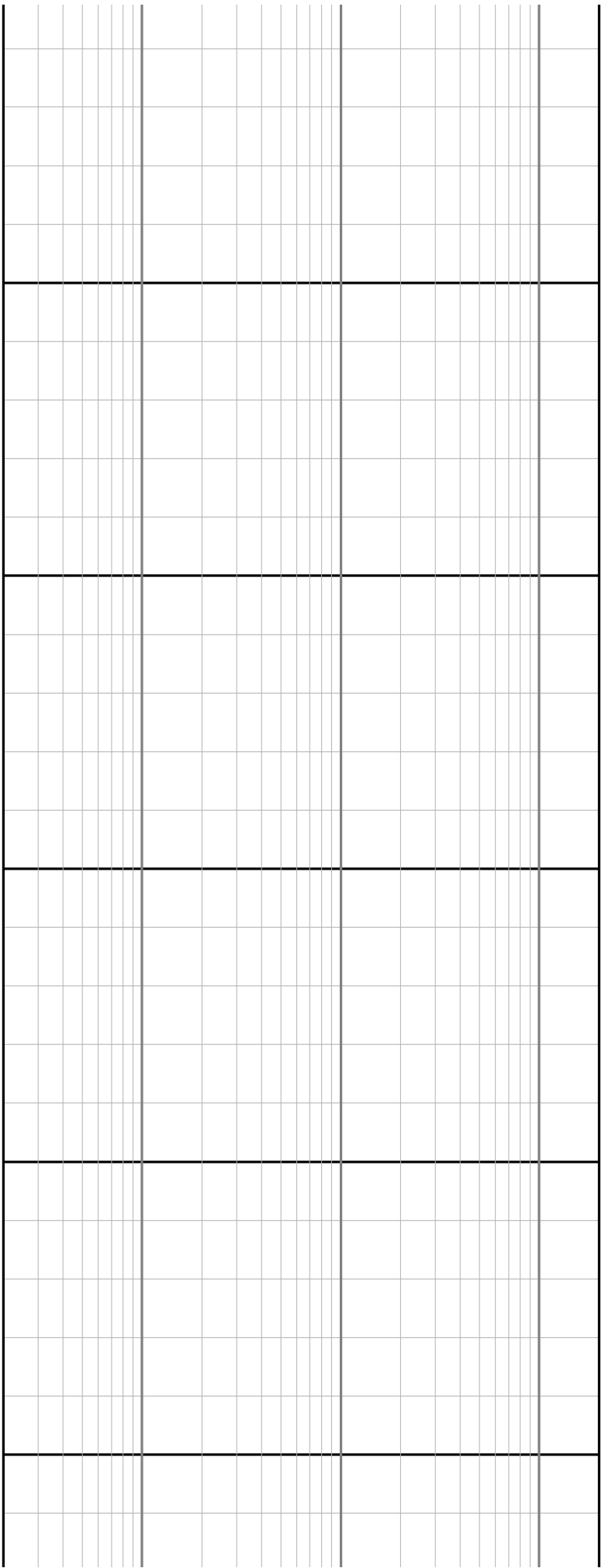
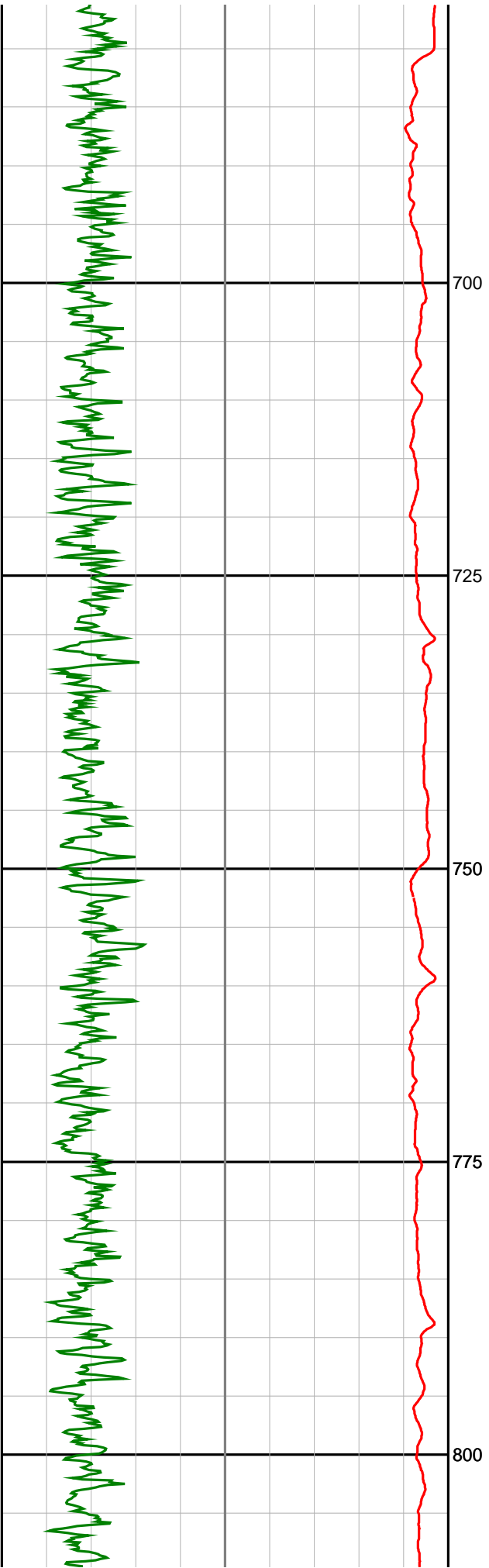
Recorded LWD Log (Permanent Datum - LAT)

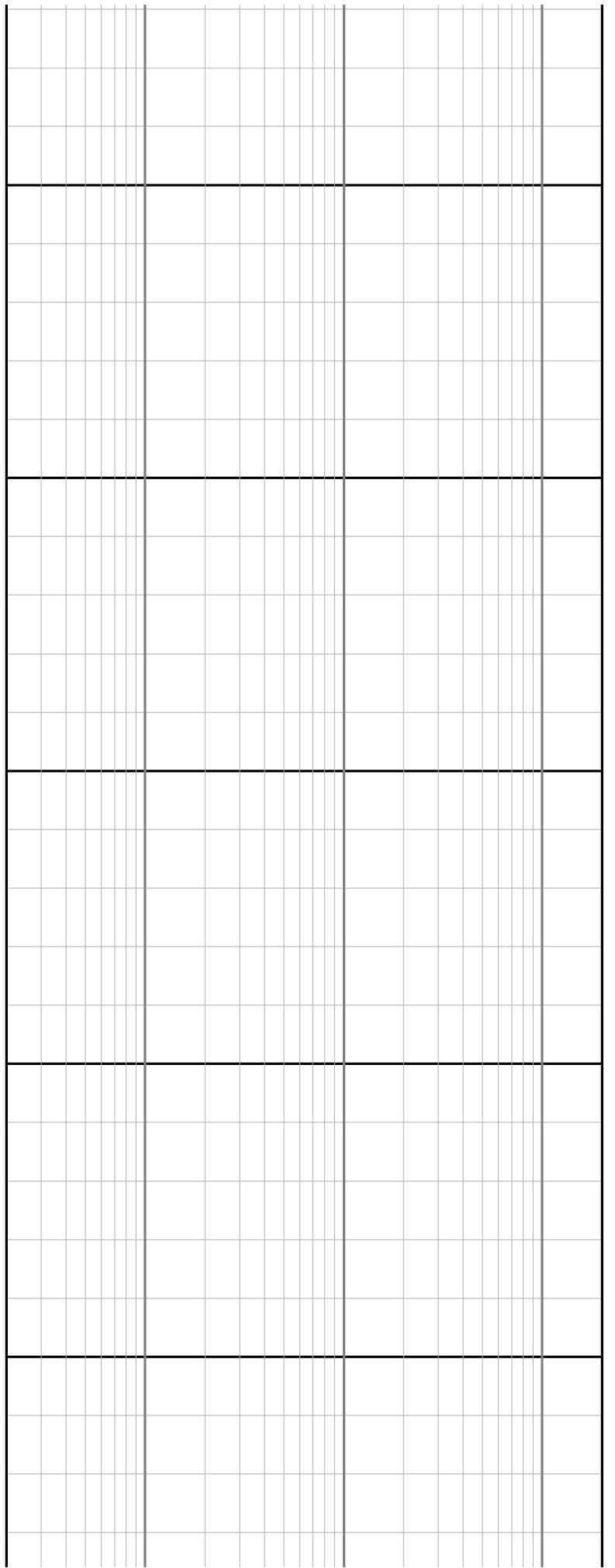
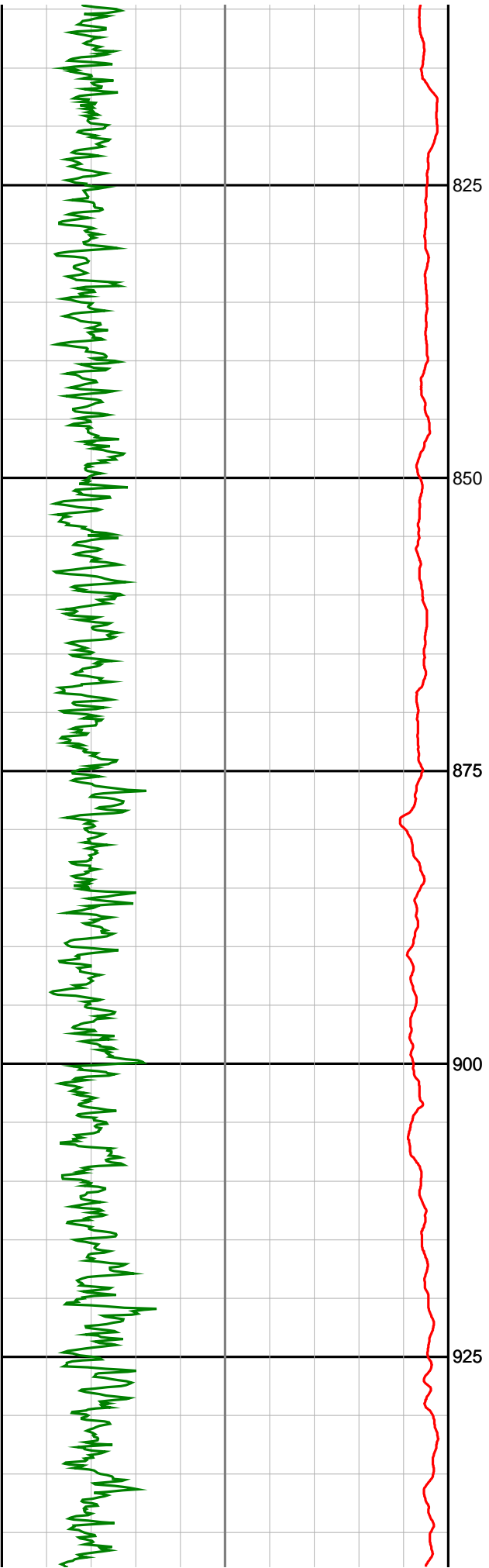


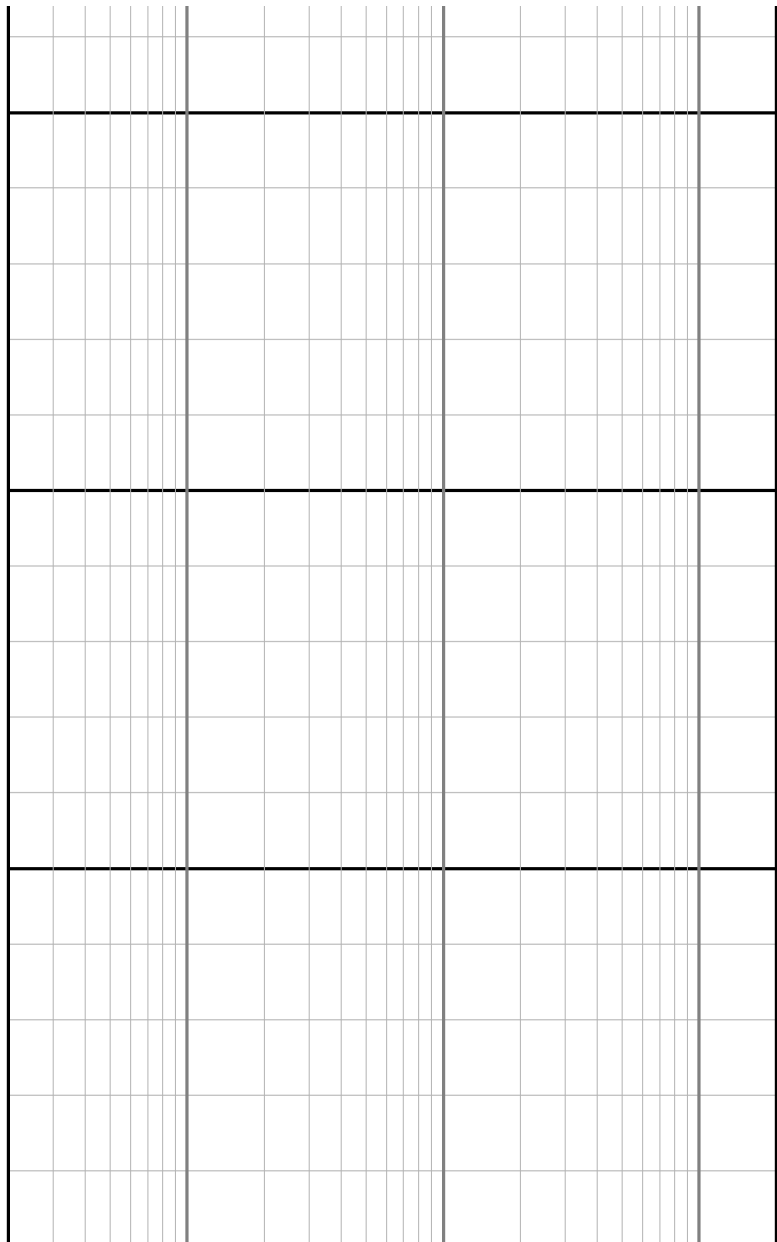
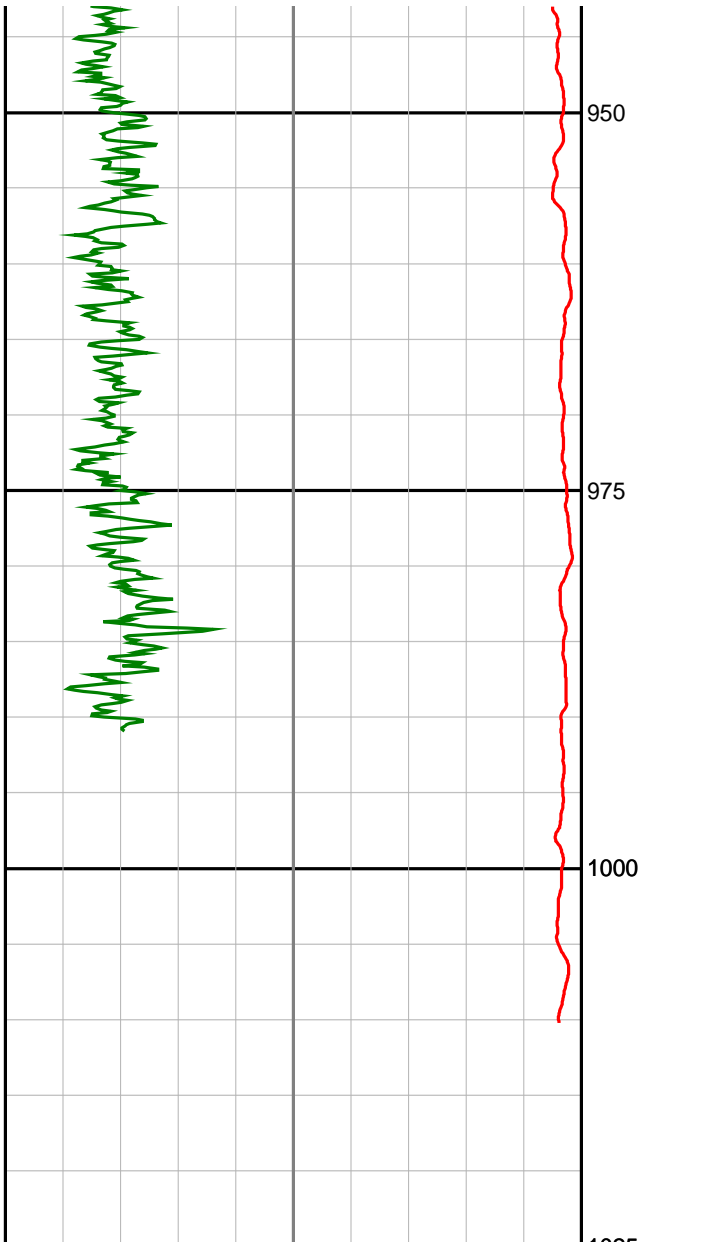












Gamma Ray (SGRC)
api

0 200

Ext Shallow Phase Res (SEXP)
ohmm

0.2 200

Rate Of Penetration (SROP)
m/hr

500 0

Shallow Phase Res (SESP)
ohmm

0.2 200

Medium Phase Res (SEMP)
ohmm

0.2 200

Deep Phase Res (SEDP)
ohmm

0.2 200

Depth
MD
1:500