

Company: Esso Australia PTY LTD.

Well: WFK W19a  
Field: Bass Strait  
Rig: 453

Country: Australia

Junk basket with 6" gauge ring  
MAX-R setting

Rig: 453  
Field: Bass Strait  
Location: West Kingfish  
Well: WFK W19a  
Company: Esso Australia PTY LTD.

453	Rig:		Bass Strait		Elev.: K.B. 33.4 m	
	Field:		West Kingfish		G.L. 76.1 m	
	Location:		WFK W19a		D.F. 33.4 m	
	Well:		Esso Australia PT		Elev.: -76.1 m	
	Company:		Esso Australia PT		109.5 m above Perm. Datum	
	LOCATION					
	Permanent Datum:		Mean sea level			
	Log Measured From:		Drill floor			
	Drilling Measured From:		Rotary table			
Logging Date	State: Victoria	Max. Well Deviation 36 deg	Longitude E 148 6 19.318		Latitude S 38 35 34.833	
Run Number	1					
Depth Driller	2682 m					
Schlumberger Depth	2686.5 m					
Bottom Log Interval	2582.1 m					
Top Log Interval	2582.1 m					
Casing Fluid Type	Brine					
Salinity						
Density	1 g/cm3					
Fluid Level						
BIT/CASING/TUBING STRING						
Bit Size	8.500 in					
From	76.1 m					
To	2682 m					
Casing/Tubing Size	7.000 in					
Weight	26 lbm/ft					
Grade	L-80					
From	0 m					
To	2682.2 m					
Maximum Recorded Temperatures						
Logger On Bottom	Time	9:00				
Unit Number	Location					
Recorded By						
Witnessed By						

PVT DATA				Run 1	Run 2	R
Oil Density						
Water Salinity						
Gas Gravity						
Bo						
Bw						
1/Bg						
Bubble Point Pressure						
Bubble Point Temperature						
Solution GOR						
Maximum Deviation	36 deg					
CEMENTING DATA						
Primary/Squeeze	Primary					
Casing String No						
Lead Cement Type						
Volume						
Density						
Water Loss						
Additives						
Tail Cement Type						
Volume						
Density						
Water Loss						
Additives						
Expected Cement Top						
Logging Date						
Run Number						
Depth Driller						
Schlumberger Depth						
Bottom Log Interval						
Top Log Interval						
Casing Fluid Type						
Salinity						
Density						
Fluid Level						
BIT/CASING/TUBING STRING						
Bit Size						
From						
To						
Casing/Tubing Size						
Weight						
Grade						
From						
To						
Maximum Recorded Temperatures						
Logger On Bottom						
Unit Number						
Recorded By						
Witnessed By						

Date Created: 14-JUN-2006 14:28:42

## Logging Cable

Type:	7-46ZV-XS
Serial Number:	76075
Length:	7310.93 M
Conveyance Method:	Wireline
Rig Type:	Offshore_Fixed

Log Sequence:	Subsequent Trip To the Well
Reference Log Name:	Precision dual laterolog-GR-Density-Neutron
Reference Log Run Number:	1
Reference Log Date:	10-JUN-2006
Subsequent Trip Down Log Correction:	2.00 M

1. HUD was tagged at 2638.5m MDKB
2. Used IDW as primary depth control
3. Used Z-Chart as secondary depth control
4. Correlated to Precision dual laterolog – GR density– Neutron
- 5.
- 6.

THE USE OF AND RELIANCE UPON THIS RECORDED-DATA BY THE HEREIN NAMED COMPANY (AND ANY OF ITS AFFILIATES, PARTNERS, REPRESENTATIVES, AGENTS, CONSULTANTS AND EMPLOYEES) IS SUBJECT TO THE TERMS AND CONDITIONS AGREED UPON BETWEEN SCHLUMBERGER AND THE COMPANY, INCLUDING: (a) RESTRICTIONS ON USE OF THE RECORDED-DATA; (b) DISCLAIMERS AND WAIVERS OF WARRANTIES AND REPRESENTATIONS REGARDING COMPANY'S USE OF AND RELIANCE UPON THE RECORDED-DATA; AND (c) CUSTOMER'S FULL AND SOLE RESPONSIBILITY FOR ANY INFERENCE DRAWN OR DECISION MADE IN CONNECTION WITH THE USE OF THIS RECORDED-DATA.

OTHER SERVICES2  
OS1:  
OS2:  
OS3:  
OS4:  
OS5:






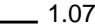
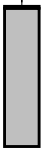
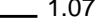





REMARKS: RUN NUMBER 2

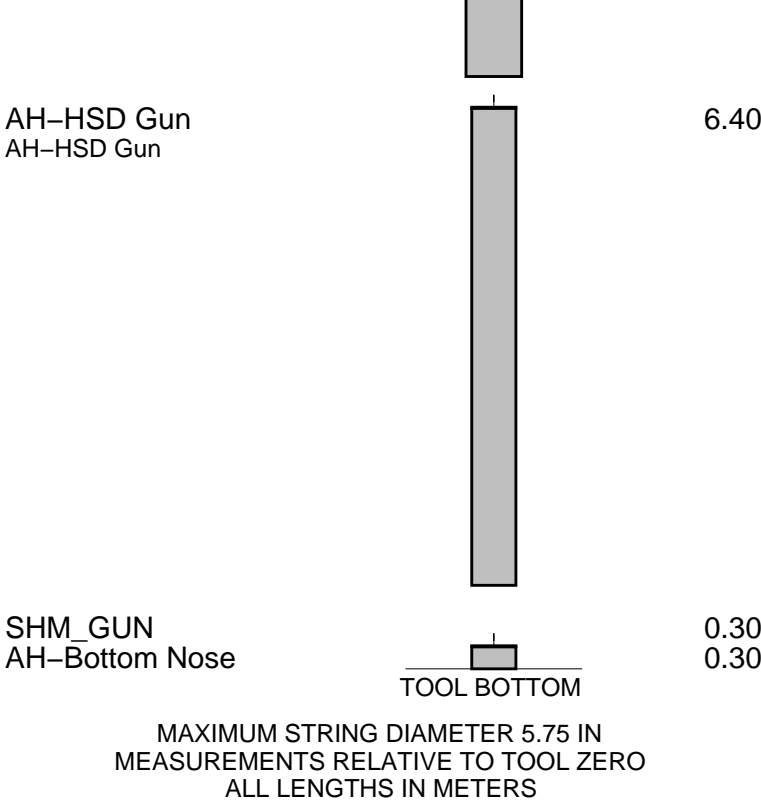
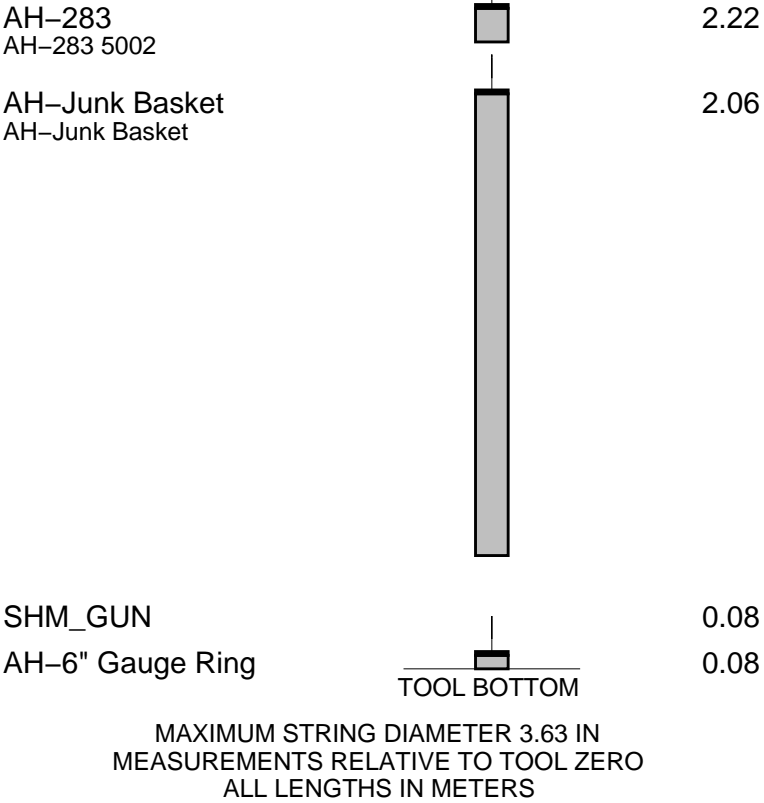
RIH with a 6" gauge ring attached to the junk basket to ensure that the MAX-R can reach it's required depth.

RIH with CPST and MAX-R correlated to open hole log and set MAX-R at required depth.

CCL to junk basket bottom = 2.45m					
CCL to top shot = 10.42m					
CCL stop depth= 2582.1m MDKB					
Schlumberger crew:					
Operators = Kevin Kerr & Nathan Simmons ( days )					
Gary martin, Luke Anderson ( nights )					
Specialist = Owen Darby					
<div style="text-align: center;">RUN 1</div> <div> <div>SERVICE ORDER #:</div> <div>PROGRAM VERSION: 14C0-302</div> <div>FLUID LEVEL:</div> </div>			<div style="text-align: center;">RUN 2</div> <div> <div>SERVICE ORDER #:</div> <div>PROGRAM VERSION:</div> <div>FLUID LEVEL:</div> </div>		
LOGGED INTERVAL	START	STOP	LOGGED INTERVAL	START	STOP

EQUIPMENT DESCRIPTION	
1	...
2	...
3	...
4	...
5	...
6	...
7	...
8	...
9	...
10	...
11	...
12	...
13	...
14	...
15	...
16	...
17	...
18	...
19	...
20	...
21	...
22	...
23	...
24	...
25	...
26	...
27	...
28	...
29	...
30	...
31	...
32	...
33	...
34	...
35	...
36	...
37	...
38	...
39	...
40	...
41	...
42	...
43	...
44	...
45	...
46	...
47	...
48	...
49	...
50	...
51	...
52	...
53	...
54	...
55	...
56	...
57	...
58	...
59	...
60	...
61	...
62	...
63	...
64	...
65	...
66	...
67	...
68	...
69	...
70	...
71	...
72	...
73	...
74	...
75	...
76	...
77	...
78	...
79	...
80	...
81	...
82	...
83	...
84	...
85	...
86	...
87	...
88	...
89	...
90	...
91	...
92	...
93	...
94	...
95	...
96	...
97	...
98	...
99	...
100	...

RUN 1		RUN 2	
SURFACE EQUIPMENT		SURFACE EQUIPMENT	
WITM (SHM)		WITM (SHM)	
DOWNHOLE EQUIPMENT		DOWNHOLE EQUIPMENT	
<div> <div>PEH-A PEH-A</div> <div>  </div> <div>4.95</div> </div>		<div> <div>PEH-A PEH-A</div> <div>  </div> <div>19.61</div> </div>	
<div> <div>AH-64 AH-64 2926</div> <div>  </div> <div>4.41</div> </div>		<div> <div>AH-64</div> <div>  </div> <div>19.06</div> </div>	
<div> <div>PGGT-D PGGC PGGH-D</div> <div>  </div> <div>4.00</div> </div>	<div> <div>Gamma Ray</div> <div>  </div> <div>1.07</div> </div>	<div> <div>PGGT-D PGGC PGGH-D</div> <div>  </div> <div>18.66</div> </div>	<div> <div>Gamma Ray</div> <div>  </div> <div>1.07</div> </div>
	<div> <div>CCL Casin Tension</div> <div>  </div> <div>TOOL ZERO</div> </div>		<div> <div>CCL Casin Tension</div> <div>  </div> <div>TOOL ZERO</div> </div>
		<div> <div>AH-283 AH-CPST AH-CPST</div> <div>  </div> <div>16.87</div> </div>	
		<div> <div>AH-283 AH-CPST AH-CPST</div> <div>  </div> <div>16.71</div> </div>	
		<div> <div>AH-MAX-R AH-MAX-R</div> <div>  </div> <div>12.14</div> </div>	

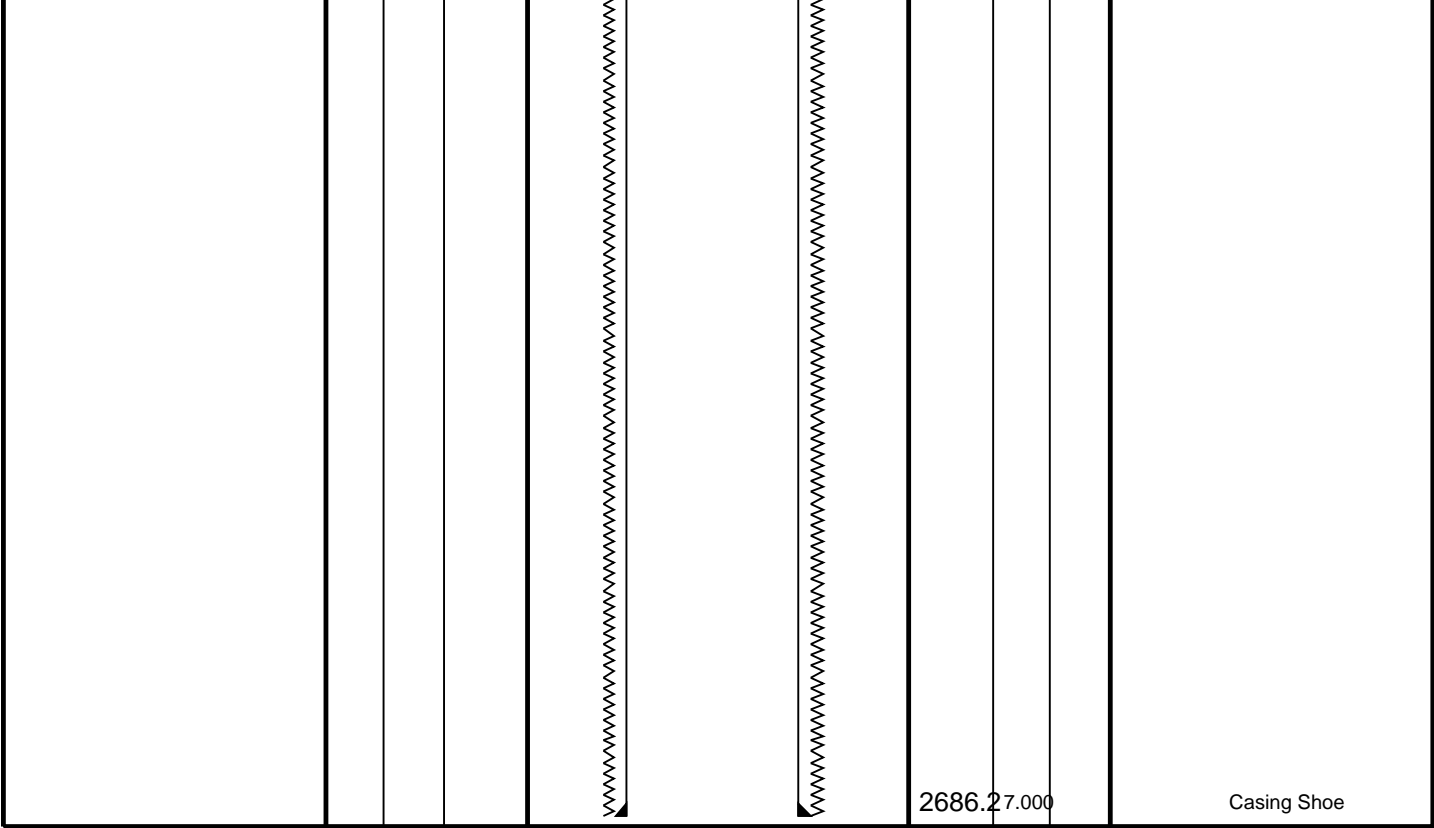


Client: Esso Australia PTY LTD.  
Well: WKF W19a  
Field: Gippsland Basin  
State: Victoria  
Country: Australia

Drawing Date: 6/12/2006

Rig Name: West Kingfish  
Reference Datum: MSL  
Elevation: 33.4 m

Production String	(in)		(m)	Well Schematic	(m)	(in)		Casing String
	OD	ID	MD		MD	OD	ID	
					0.0	11.625	10.625	Borehole Segment Surface Casing String
					629.0	8.500	7.000	Borehole Segment Liner Hanger Casing String
					629.0	10.625	57.000	



2686.27.000

Casing Shoe



MAX-R  
Setting Pass

MAXIS Field Log

Company: Esso Australia PTY LTD. Well: WFK W19a

Output DLIS Files						
DEFAULT	PERFO_046LUP	FN:44	PRODUCER	14-Jun-2006 12:16	2620.2 M	2548.7 M

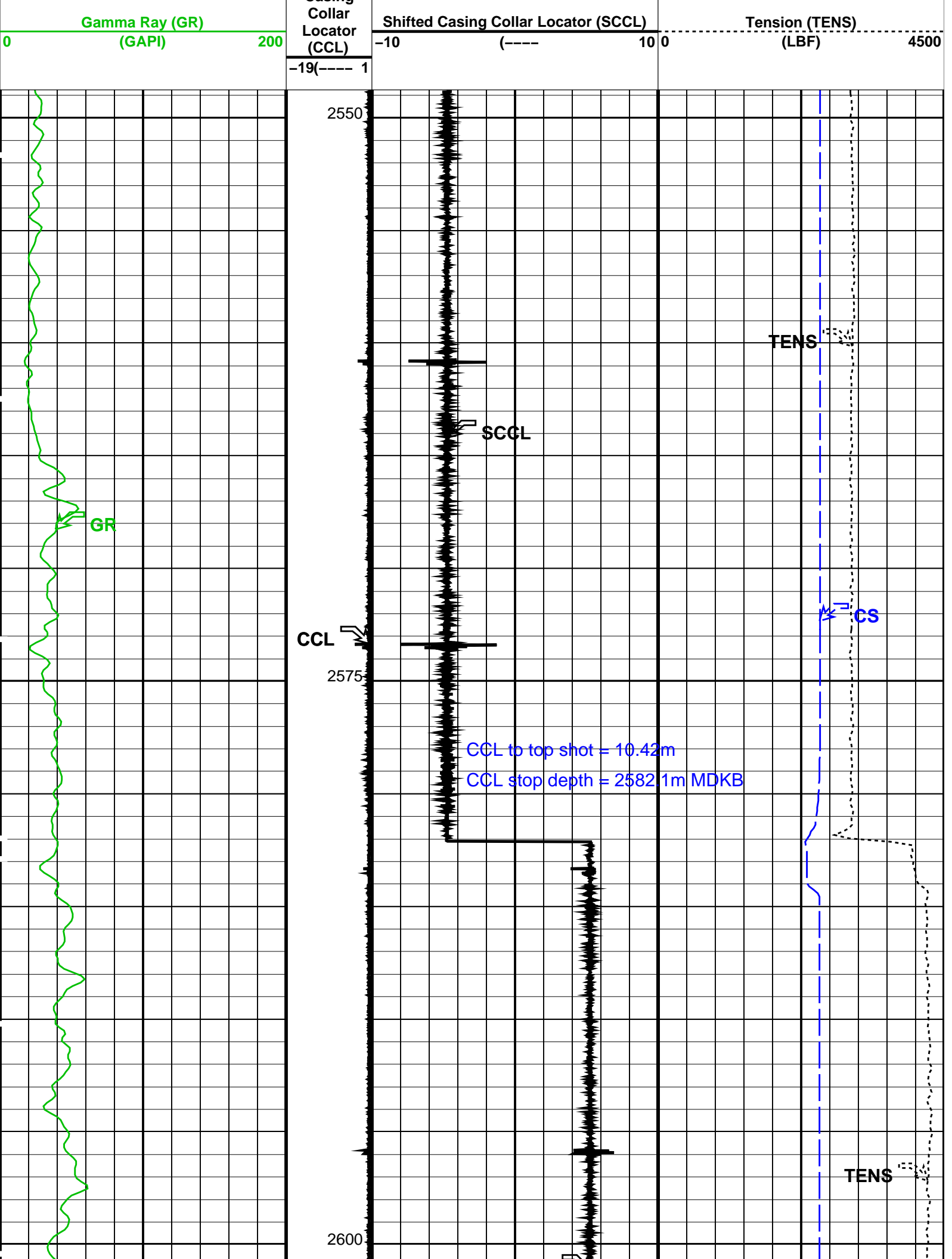
OP System Version: 14C0-302						
MCM						
SHM_GUN	14C0-302	PGGT-D		14C0-302		

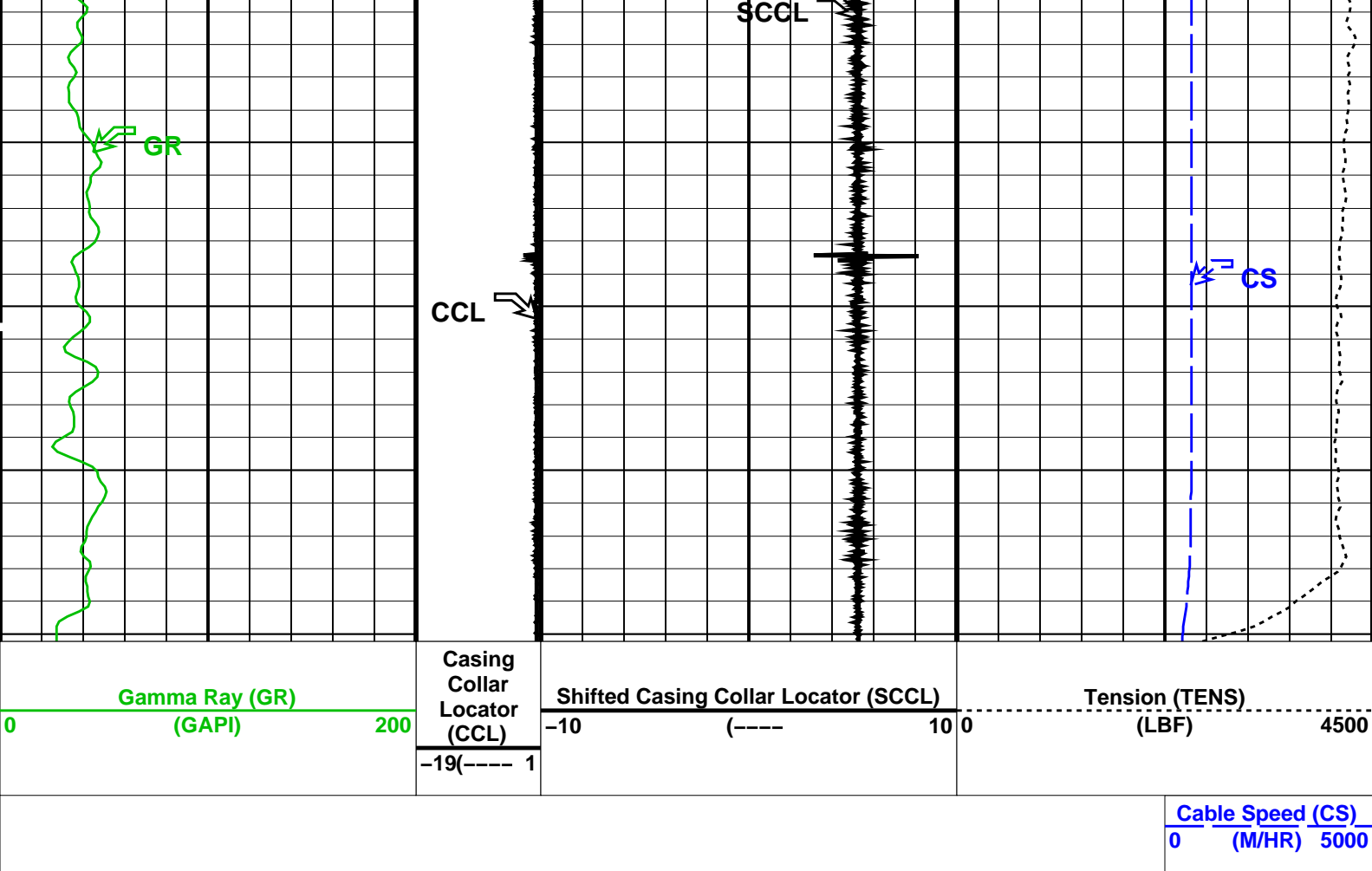
PIP SUMMARY

Time Mark Every 60 S

Cable Speed (CS)  
0 (M/HR) 5000

Casing





#### PIP SUMMARY

Time Mark Every 60 S

Format: PERFO Vertical Scale: 1:200

Graphics File Created: 14-Jun-2006 12:16

OP System Version: 14C0-302

MCM

SHM\_GUN

14C0-302

PGGT-D

14C0-302

#### Output DLIS Files

DEFAULT

PERFO\_046LUP

FN:44

PRODUCER

14-Jun-2006 12:16

Schlumberger

MAX-R  
Correlation Pass

MAXIS Field Log

Company: Esso Australia PTY LTD.

Well: WFK W19a

#### Input DLIS Files

DEFAULT

PERFO\_044LUP

FN:42

PRODUCER

14-Jun-2006 12:01

2619.9 M

2550.0 M

#### Output DLIS Files

DEFAULT

PERFO\_045PUP

FN:43

PRODUCER

14-Jun-2006 12:13

2620.1 M

2550.6 M

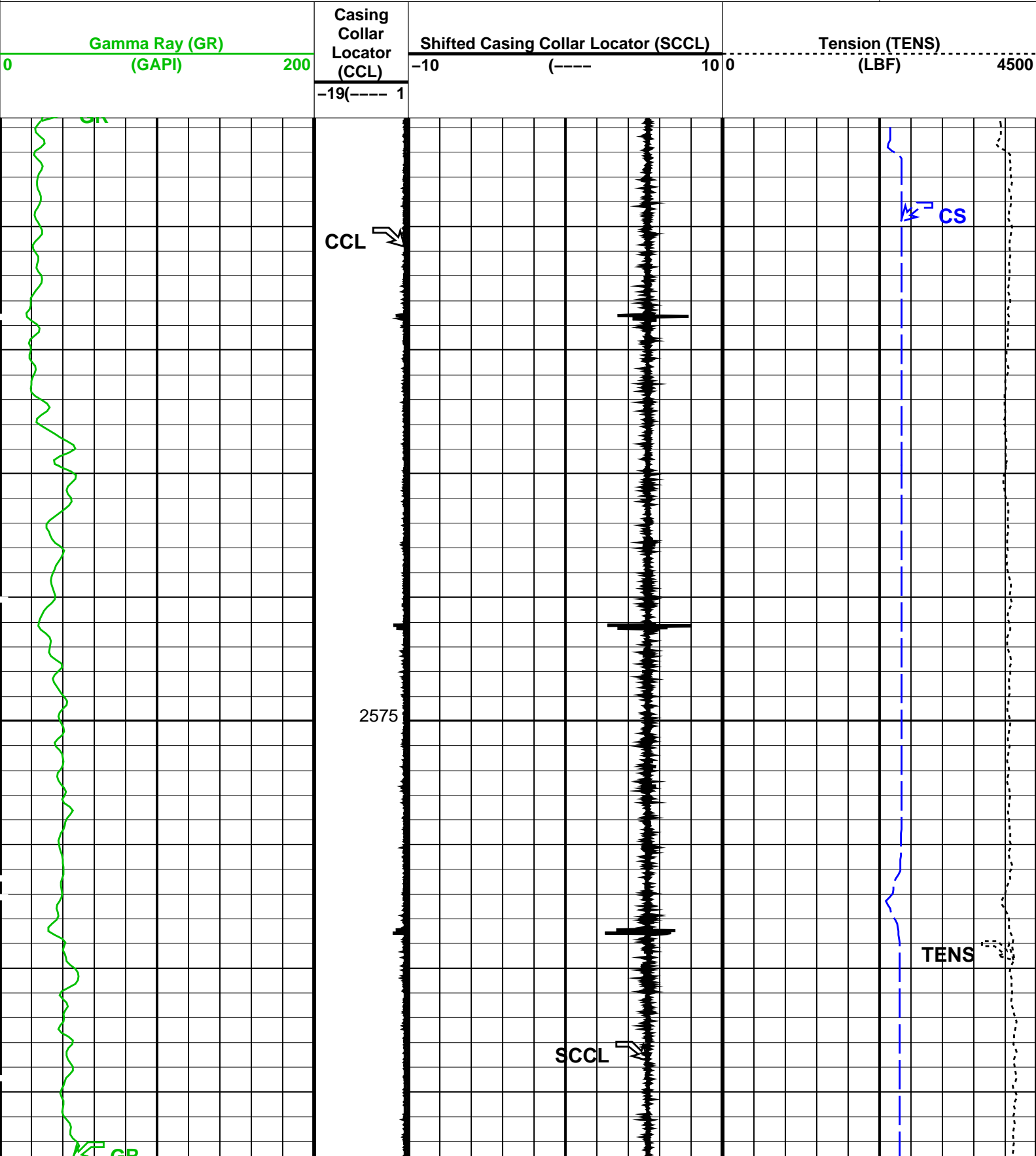
OP System Version: 14C0-302  
MCM

SHM\_GUN      14C0-302      PGGT-D      14C0-302

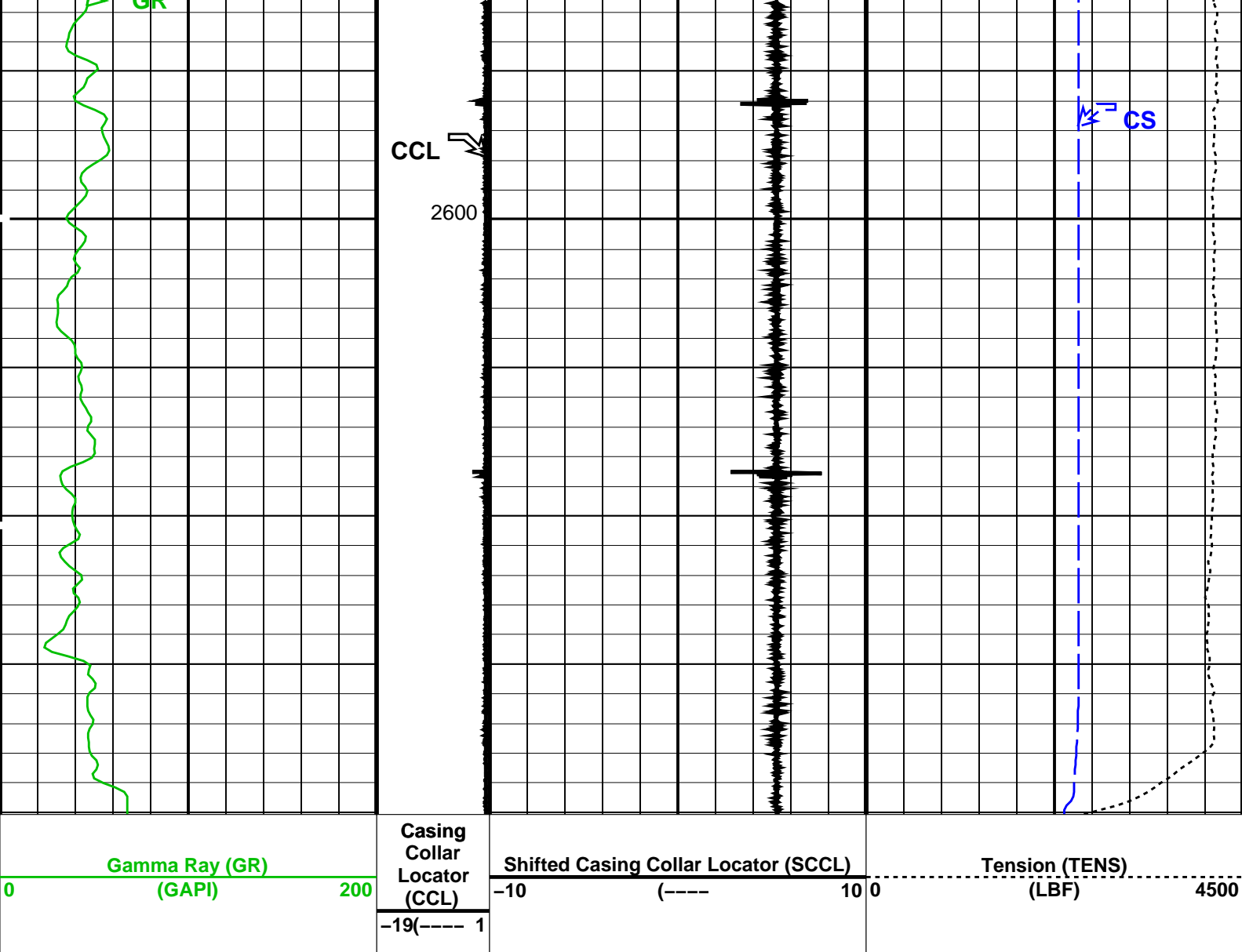
PIP SUMMARY

Time Mark Every 60 S

Cable Speed (CS)  
0 (M/HR) 5000







PIP SUMMARY		Cable Speed (CS)
		0 (M/HR) 5000

Time Mark Every 60 S

Parameters		
DLIS Name	Description	Value
DO	System and Miscellaneous	
PP	Depth Offset for Playback	0.2 M
	Playback Processing	NORMAL

Format: PERFO Vertical Scale: 1:200 Graphics File Created: 14-Jun-2006 12:13

OP System Version: 14C0-302			
MCM			
SHM_GUN	14C0-302	PGGT-D	14C0-302

Input DLIS Files					
DEFAULT	PERFO_044LUP	FN:42	PRODUCER	14-Jun-2006 12:01	2619.9 M 2550.0 M
Output DLIS Files					
DEFAULT	PERFO_045PUP	FN:43	PRODUCER	14-Jun-2006 12:13	

Company: Esso Australia PTY LTD.

Well: WFK W19a

**Input DLIS Files**

DEFAULT PERFO\_031LUP FN:29 PRODUCER 14-Jun-2006 08:01 2641.4 M 2558.9 M

**Output DLIS Files**

DEFAULT PERFO\_032PUP FN:30 PRODUCER 14-Jun-2006 08:12 2641.5 M 2559.6 M

**OP System Version: 14C0-302**

MCM

SHM\_GUN 14C0-302 PGGT-D 14C0-302

**PIP SUMMARY**

Time Mark Every 60 S

Cable Speed (CS)  
0 (M/HR) 5000

