

Company: Esso Australia Ltd.

Well: A-5a

Field: Fortescue

Rig : Prod4 / Crane

Country: Australia

Gamma Ray
Survey

Prod4 / Crane
Fortescue
Gippsland
A-5a
Esso Australia Ltd.

LOCATION	
Gippsland Basin Bass Strait	Elev.: K.B. 39.6 m G.L. -69 m D.F. 39.6 m
Permanent Datum:	M.S.L.
Log Measured From:	D.F.
Drilling Measured From:	D.F.

State: Victoria	Max. Well Deviation 67 deg	Longitude 148° 16' 36.62" E	Latitude 38° 24' 31.49 S
-----------------	----------------------------	-----------------------------	--------------------------

Logging Date	3-Jul-2006
--------------	------------

Run Number	One
------------	-----

Depth Driller	4286.5 m
---------------	----------

Schlumberger Depth	4280.5 m
--------------------	----------

Bottom Log Interval	4280.5 m
---------------------	----------

Top Log Interval	4193 m
------------------	--------

Casing Fluid Type	Production Fluids
-------------------	-------------------

Salinity	
----------	--

Density	
---------	--

Fluid Level	125 m
-------------	-------

BIT/CASING/TUBING STRING	
--------------------------	--

Bit Size	9.000 in
----------	----------

From	
------	--

To	
----	--

Casing/Tubing Size	7.000 in
--------------------	----------

Weight	26 lbm/ft
--------	-----------

Grade	L-80
-------	------

From	19.41 m
------	---------

To	4498 m
----	--------

Maximum Recorded Temperatures	223 degf	
-------------------------------	----------	--

Logger On Bottom	3-JUL-2006	Time	9:40
------------------	------------	------	------

Unit Number	LEE001	Location	Prod4 / Ausl
-------------	--------	----------	--------------

Recorded By	G Wright , S Gilbert
-------------	----------------------

Witnessed By	B White / B Robinson
--------------	----------------------

Run 1

Oil Density
Water Salinity
Gas Gravity

Bo

Bw

1/Bg

Bubble Point Pressure

Bubble Point Temperature

Solution GOR

Maximum Deviation

CEMENTING DATA

Primary/Squeeze

Casing String No

Lead Cement Type

Volume

Density

Water Loss

Additives

Tail Cement Type

Volume

Density

Water Loss

Additives

Expected Cement Top

Logging Date

Run Number

Depth Driller

Schlumberger Depth

Bottom Log Interval

Top Log Interval

Casing Fluid Type

Salinity

Density

Fluid Level

BIT/CASING/TUBING STRING

Bit Size

From

To

Casing/Tubing Size

Weight

Grade

From

To

Maximum Recorded Temperatures

Logger On Bottom

Unit Number

Recorded By

Witnessed By

DEPTH SUMMARY LISTING

Depth Control Parameters	
--------------------------	--

Depth Control Remarks	
-----------------------	--

DISCLAIMER

THE USE OF AND RELIANCE UPON THIS RECORDED-DATA BY THE HEREIN NAMED COMPANY (AND ANY OF ITS AFFILIATES, PARTNERS, REPRESENTATIVES, AGENTS, CONSULTANTS AND EMPLOYEES) IS SUBJECT TO THE TERMS AND CONDITIONS AGREED UPON BETWEEN SCHLUMBERGER AND THE COMPANY, INCLUDING: (a) RESTRICTIONS ON USE OF THE RECORDED-DATA; (b) DISCLAIMERS AND WAIVERS OF WARRANTIES AND REPRESENTATIONS REGARDING COMPANY'S USE OF AND RELIANCE UPON THE RECORDED-DATA; AND (c) CUSTOMER'S FULL AND SOLE RESPONSIBILITY FOR ANY INFERENCE DRAWN OR DECISION MADE IN CONNECTION WITH THE USE OF THIS RECORDED-DATA.

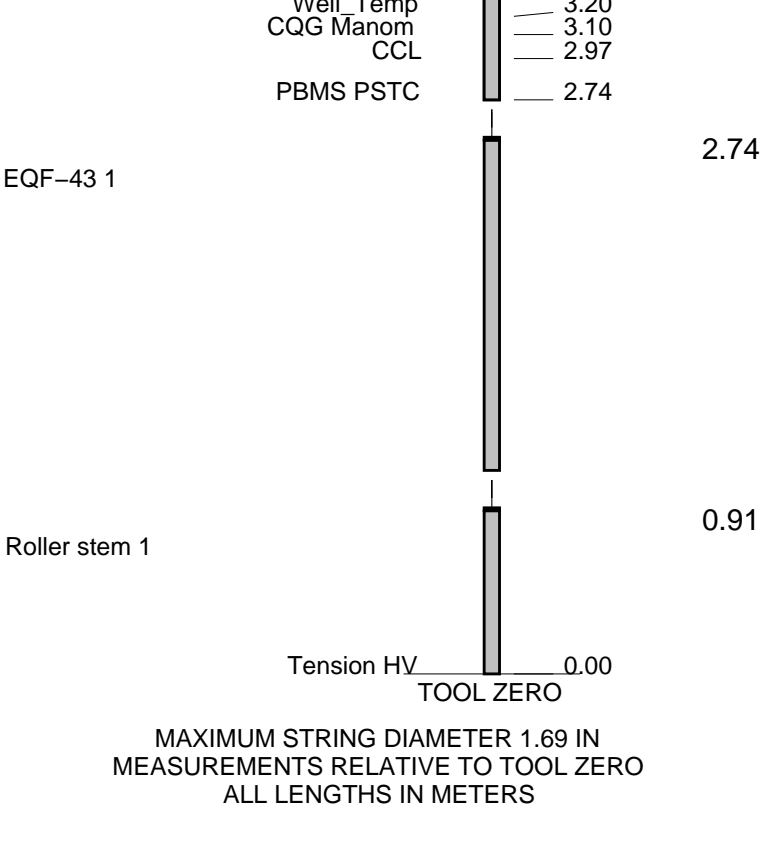
Crew : John Light & Andrew Hall.

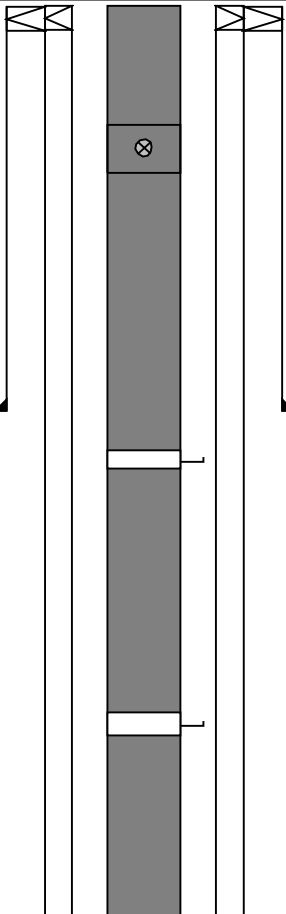
SERVICE ORDER #: Ausl06297095
PROGRAM VERSION: 14C0-302
FLUID LEVEL: 125 m

EQUIPMENT	DESCRIPTION

WITM-A 792
PSC 16MHZ 827

DOWNHOLE EQUIPMENT		
SWBS/B 761		8.34
SWBS/B 762		7.65
SWBS/B 763		6.96
SWBS/B 731		6.28
SBHA/A 726	Detail MT TelStatus CTEM	5.59
PSPT-B		5.26
PSC-A 827		
PSPT-B 827		
PSTC 827		
PBMS-B 827		
CQG_F_Mano 827		
RTD Thermometer 827		
GR 33153	GR	4.13
CCL 827		
PBMS 827		
Well Temp		2.20



Production String	(in)		(m)	Well Schematic	(m)	(in)		Casing String
	OD	ID	MD		MD	OD	ID	
Tubing	3.500	2.992	18.6		21.0	13.375	12.615	Casing String
					19.4	7.000	6.276	Casing String
					19.4	9.625	7.000	Liner Hanger
					21.0	9.625	8.756	Casing String
					21.0	13.375	9.625	Liner Hanger
SSSV	3.500		455.5					
Gas Lift Mandrel	3.500		1240.8		1087.6	13.375	12.615	Casing Shoe
Gas Lift Mandrel	3.500		2010.3					

[illegible]



Gamma-Ray survey

4280.5m MDKB to 4193m MDKB

Date Created: 3-JUL-2006 10:09:47

Company: Esso Australia Ltd.

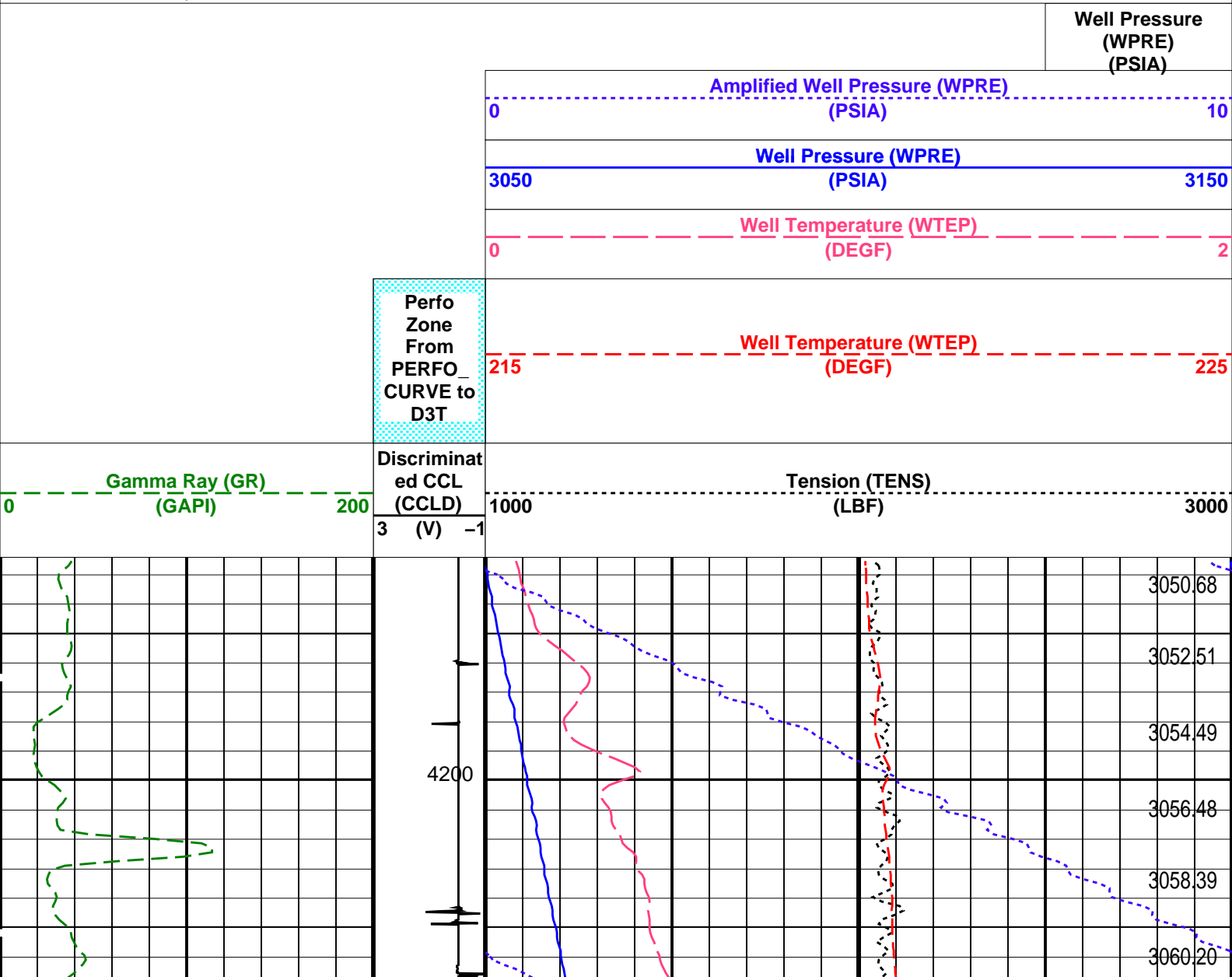
Well: A-5a

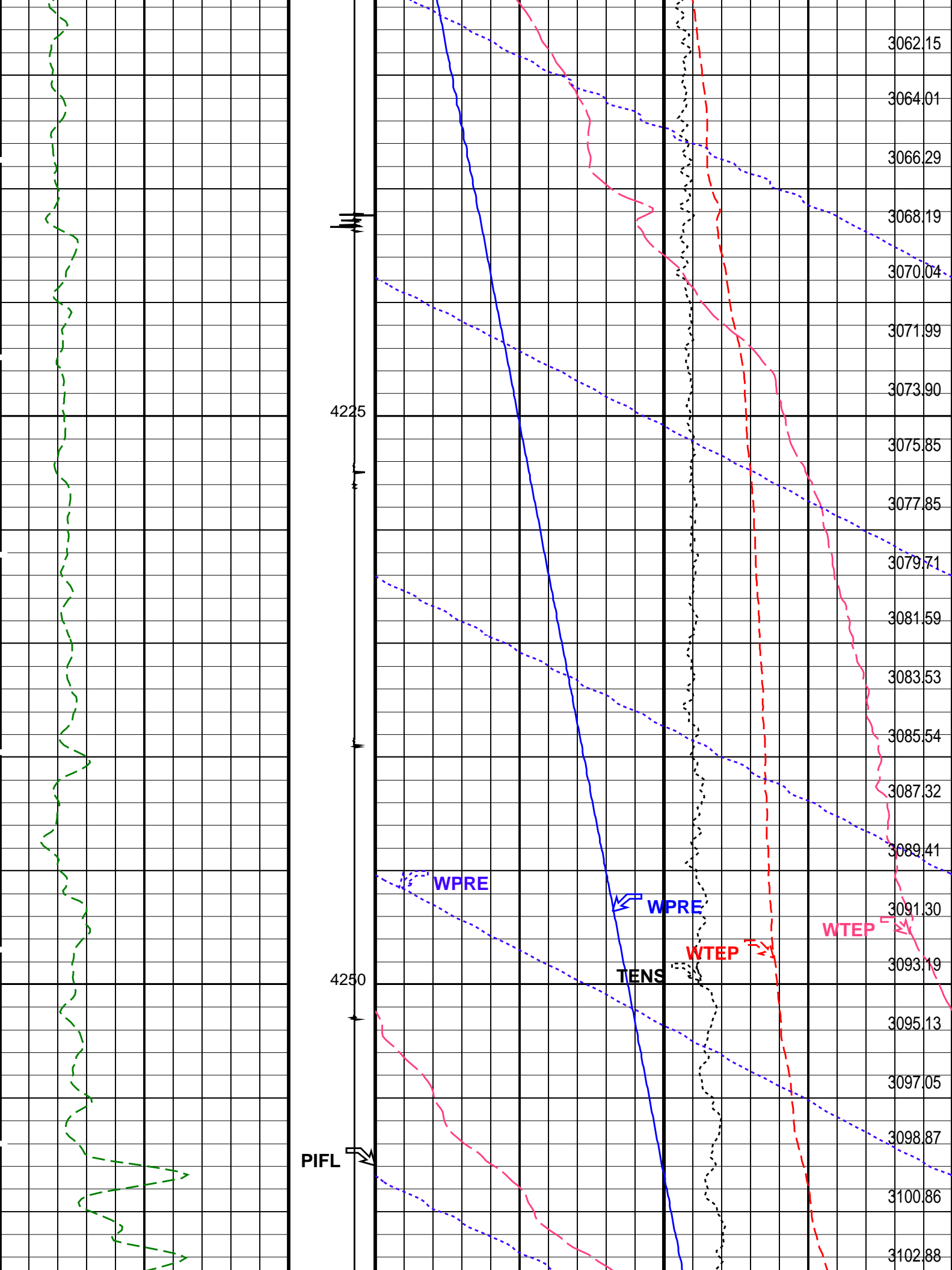
Input DLIS Files					
DEFAULT	PSP_011LUP	FN:10	PRODUCER	03-Jul-2006 09:30	4293.1 M 4194.7 M
Output DLIS Files					
DEFAULT	PSP_013PUP	FN:12	PRODUCER	03-Jul-2006 10:14	4290.4 M 4192.4 M

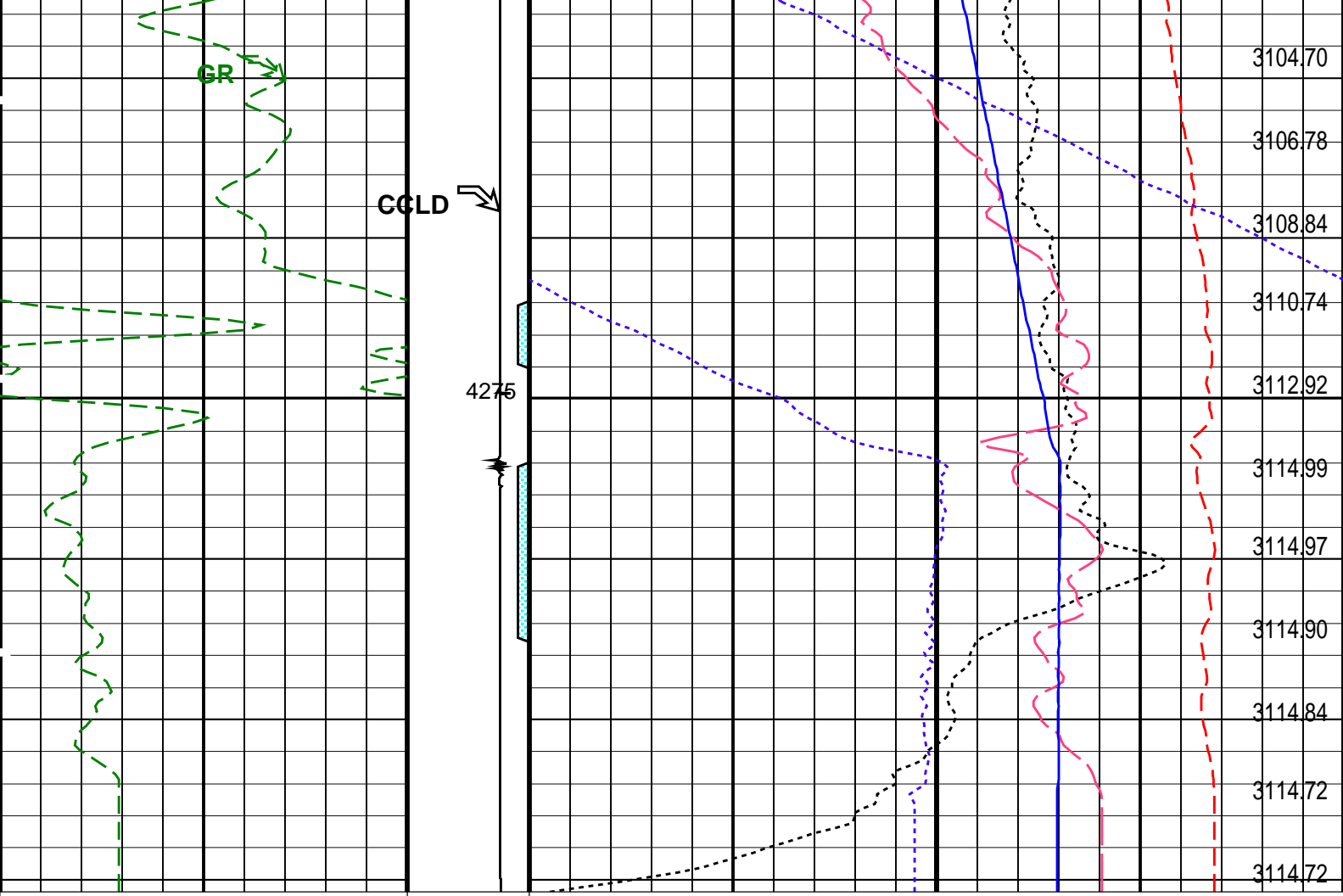
OP System Version: 14C0-302	
MCM	
PSPT-B	14C0-302

PIP SUMMARY

Time Mark Every 60 S







Gamma Ray (GR) (GAPI)		Discriminat ed CCL (CCLD)	Tension (TENS) (LBF)	
0 200		3 (V) -1	1000 3000	
		Perfo Zone From PERFO_ CURVE to D3T	Well Temperature (WTEP) (DEGF)	
			215 225	
			Well Temperature (WTEP) (DEGF)	
			0 2	
			Well Pressure (WPRE) (PSIA)	
			3050 3150	
			Amplified Well Pressure (WPRE) (PSIA)	
			0 10	
			Well Pressure (WPRE) (PSIA)	

PIP SUMMARY

Time Mark Every 60 S

Format: PSP_1 Vertical Scale: 1:200 Graphics File Created: 03-Jul-2006 10:14

OP System Version: 14C0-302
MCM

PSPT-B 14C0-302

Parameters

DLIS Name	Description	Value		
DO	System and Miscellaneous			
PP	Depth Offset for Playback Playback Processing	-2.7	M	
		NORMAL		
Input DLIS Files				
DEFAULT	PSP_011LUP	FN:10	PRODUCER	03-Jul-2006 09:30 4293.1 M 4194.7 M
Output DLIS Files				
DEFAULT	PSP_013PUP	FN:12	PRODUCER	03-Jul-2006 10:14

Company:	Esso Australia Ltd.	Schlumberger
Well:	A-5a	
Field:	Fortescue	
Rig :	Prod4 / Crane	
Country:	Australia	
	Gamma Ray Survey	