

Schlumberger									
Company: Esso Australia Ltd.									
Well: A-16a									
Field: Fortescue									
Rig : Prod4 / Crane					Country: Australia				
Gamma Ray Survey					LOCATION				
Gippsland Basin Bass Strait		Elev.: K.B. 39.6 m G.L. -69 m D.F. 39.6 m							
Permanent Datum: _____		M.S.L. _____			Elev.: 0 m _____				
Log Measured From: _____		D.F. _____			39.6 m above Perm. Datum				
Drilling Measured From: _____		D.F. _____							
State: Victoria		Max. Well Deviation 77 deg			Longitude 148° 16' 36.62" E		Latitude 38° 24' 31.49 S		
Logging Date					30-Jun-2006				
Run Number					One				
Depth Driller					4913 m				
Schlumberger Depth					4897 m				
Bottom Log Interval					4900 m				
Top Log Interval					4695 m				
Casing Fluid Type					Production Fluids				
Salinity									
Density									
Fluid Level									
BIT/CASING/TUBING STRING									
Bit Size					6.750 in				
From									
To									
Casing/Tubing Size					5.500 in				
Weight					17 lbm/ft				
Grade					L-80				
From					4538.41 m				
To					4984.45 m				
Maximum Recorded Temperatures					227 degf				
Logger On Bottom					30-Jun-2006		11:00		
Unit Number		Location			LEE001 Prod4 / Ausl				
Recorded By					G Wright , S Gilbert				
Witnessed By					B White / B Robinson				

Oil Density		Run 1	Run 2	Run
Water Salinity				
Gas Gravity				
Bo				
Bw				
1/Bg				
Bubble Point Pressure				
Bubble Point Temperature				
Solution GOR				
Maximum Deviation		77 deg		
CEMENTING DATA				
Primary/Squeeze		Primary		
Casing String No				
Lead Cement Type				
Volume				
Density				
Water Loss				
Additives				
Tail Cement Type				
Volume				
Density				
Water Loss				
Additives				
Expected Cement Top				
Logging Date				
Run Number				
Depth Driller				
Schlumberger Depth				
Bottom Log Interval				
Top Log Interval				
Casing Fluid Type				
Salinity				
Density				
Fluid Level				
BIT/CASING/TUBING STRING				
Bit Size				
From				
To				
Casing/Tubing Size				
Weight				
Grade				
From				
To				
Maximum Recorded Temperatures				
Logger On Bottom		Time		
Unit Number		Location		
Recorded By				
Witnessed By				

**DEPTH SUMMARY LISTING****Depth System Equipment**

Date Created: 25-JUN-2006 10:09:47

Depth Measuring Device	Tension Device	Logging Cable
Type: IDW-H Serial Number: 797 Calibration Date: 10-May-2006 Calibrator Serial Number: 1009 Calibration Cable Type: 2-32ZT Wheel Correction 1: -3 Wheel Correction 2: -3	Type: CMTD-C Serial Number: 1037 Calibration Date: 13-Jun-2006 Calibrator Serial Number: 1174 Calibration Gain: 1.35 Calibration Offset: 772.00	Type: 2-23ZT Serial Number: 22372 Length: 4999.94 M Conveyance Method: Wireline Rig Type: Offshore Fixed

**Depth Control Parameters**

Log Sequence: Subsequent Log In the Well  
Reference Log Name: Fortescue A-16a Composite log  
Reference Log Run Number: 1  
Reference Log Date:

**Depth Control Remarks**

1. Correlated to solar log provided by client
2. IDW used as primary depth control
3. Z-Chart used as secondary depth control.

**DISCLAIMER**

THE USE OF AND RELIANCE UPON THIS RECORDED-DATA BY THE HEREIN NAMED COMPANY (AND ANY OF ITS AFFILIATES, PARTNERS, REPRESENTATIVES, AGENTS, CONSULTANTS AND EMPLOYEES) IS SUBJECT TO THE TERMS AND CONDITIONS AGREED UPON BETWEEN SCHLUMBERGER AND THE COMPANY, INCLUDING: (a) RESTRICTIONS ON USE OF THE RECORDED-DATA; (b) DISCLAIMERS AND WAIVERS OF WARRANTIES AND REPRESENTATIONS REGARDING COMPANY'S USE OF AND RELIANCE UPON THE RECORDED-DATA; AND (c) CUSTOMER'S FULL AND SOLE RESPONSIBILITY FOR ANY INFERENCE DRAWN OR DECISION MADE IN CONNECTION WITH THE USE OF THIS RECORDED-DATA.

**OTHER SERVICES1**

OS1: Gyro  
OS2: Survey  
OS3:  
OS4:  
OS5:

**REMARKS: RUN NUMBER 1**

Log correlated to ExxonMobil Fortescue A-16a Composite Log.

Maximum well deviation = 77 degrees at 3094m MDKB.

Objectives : Gr survey over the interval 4900m MDKB to 4695mMDKB

SBHP: 3178 psia SBHT: 227degf

HUD tagged @ 4897m MDKB

Gas Fluid contact @ 885m MBKB

Sondex Tractor used between

Crew : John Light & Jake Annear.

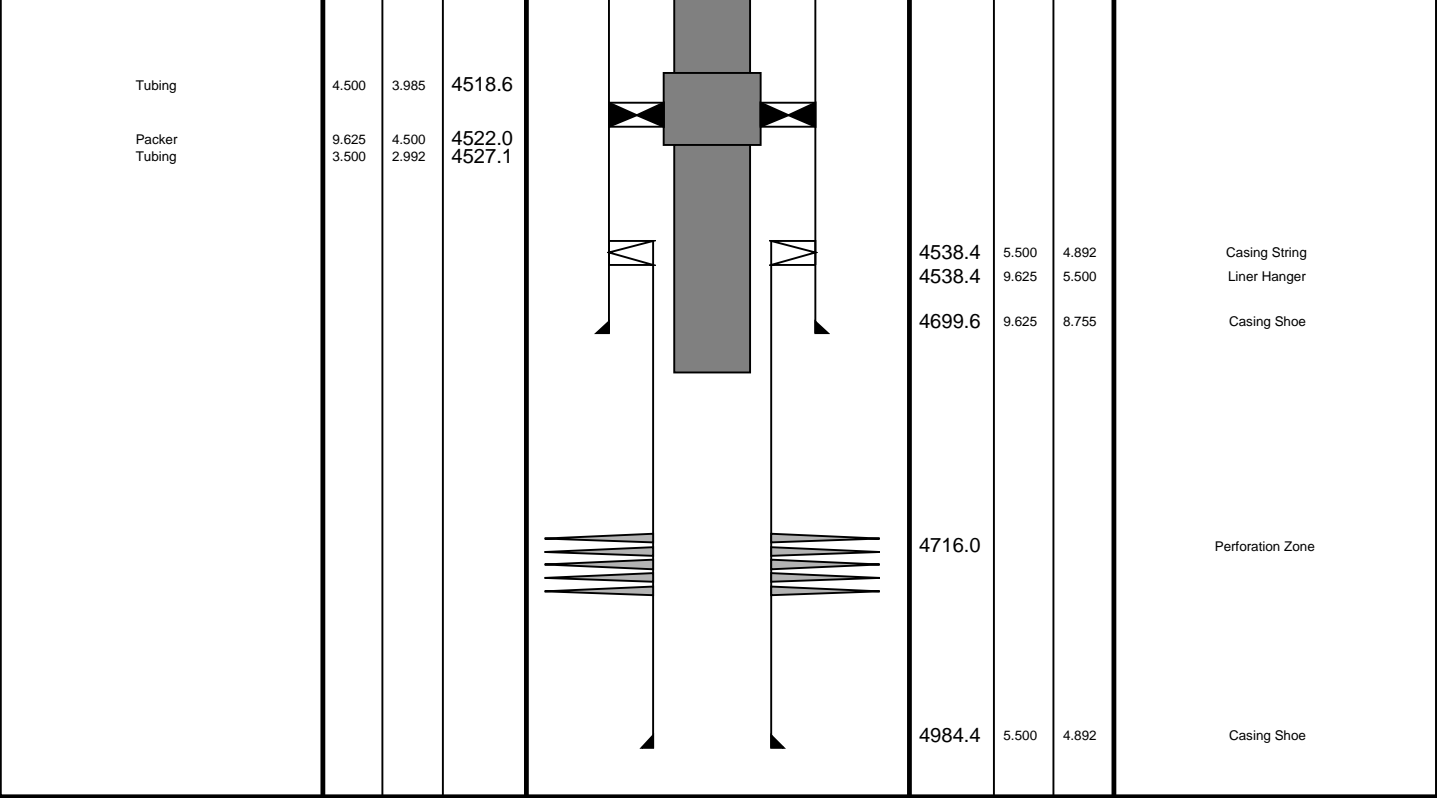
## EQUIPMENT DESCRIPTION

5.31

PSPT-A/B  
PSC-A 827  
PSPT-B 827

MAXIMUM STRING DIAMETER 1.69 IN  
MEASUREMENTS RELATIVE TO TOOL ZERO  
ALL LENGTHS IN METERS

Production String	(in)		(m)	Well Schematic			(m)		(in)	Casing String
	OD	ID	MD				MD	OD	ID	
Tubing	3.500	2.992	18.8		21.1	13.375	12.415	Casing String		
SSSV	3.500	2.750	455.7		19.2	9.625	8.755	Casing String		
					19.2	13.375	9.625	Liner Hanger		
Gas Lift Mandrel	3.500	2.895	1110.1							
Landing Nipple	3.500	2.750	1124.3							
					1403.8	13.375	12.415	Casing Shoe		



## Job Events Summary

MAXIS Field Log

### Schlumberger Job Event Summary

Time	Elapsed Time	Depth (M)	File
Log Pass (down)	30-Jun-2006 8:57 000:42	6.6 – 3144.6	PSP_011LDP
Log Pass (down)	30-Jun-2006 10:31 000:27	3758.8 – 4903.2	PSP_012LDP
Log Pass (up)	30-Jun-2006 10:58 000:26	4905.0 – 4671.1	PSP_013LUP



Gamma-Ray Survey  
4900m MBKB to 4695m MDKB

MAXIS Field Log

Company: Esso Australia Ltd. Well: A-16a

Input DLIS Files

DEFAULT PSP\_013LUP FN:12 PRODUCER 30-Jun-2006 10:58 4905.0 M 4671.1 M

Output DLIS Files

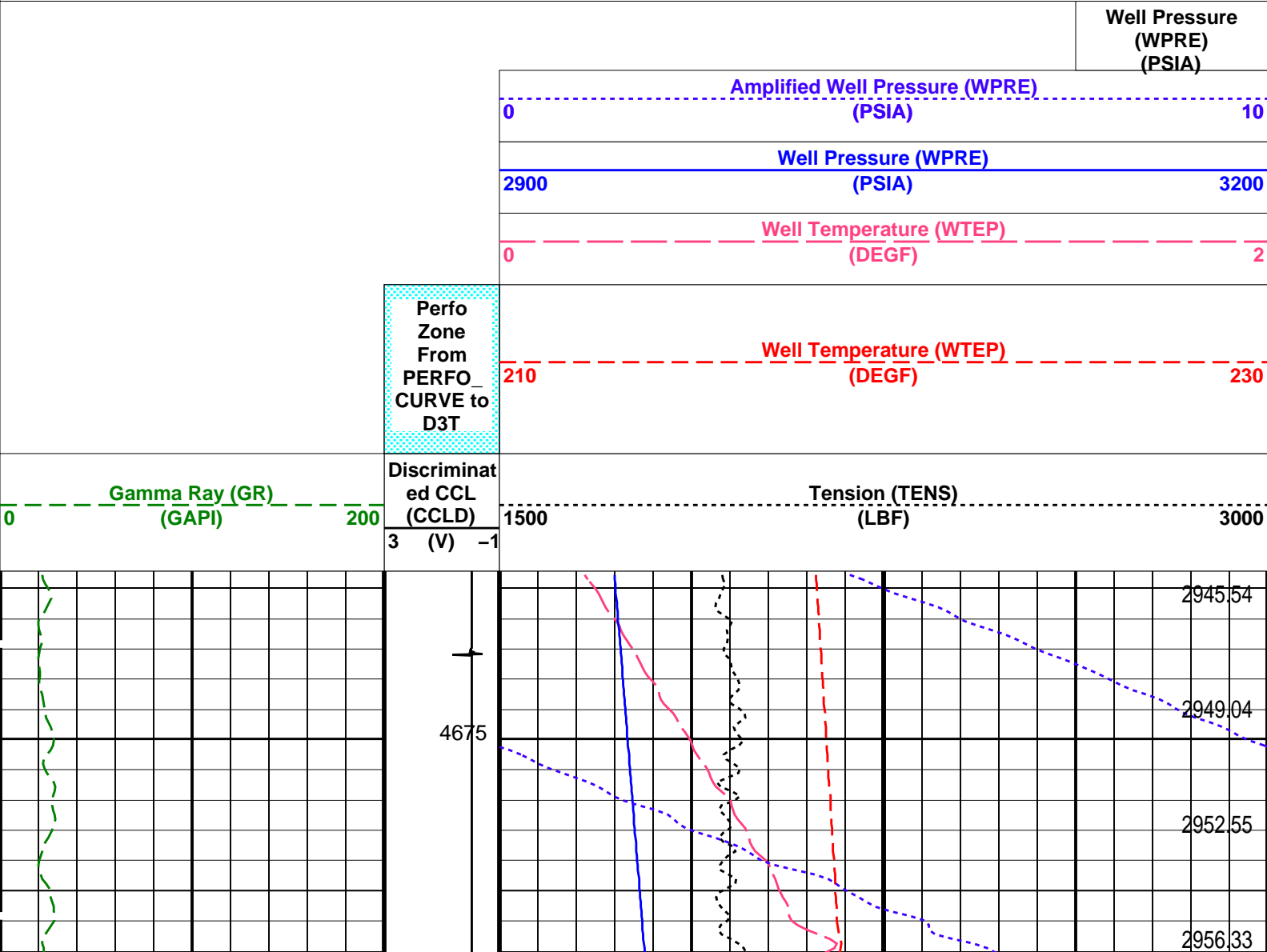
DEFAULT PSP\_017PUP FN:16 PRODUCER 30-Jun-2006 13:13 4902.9 M 4669.4 M

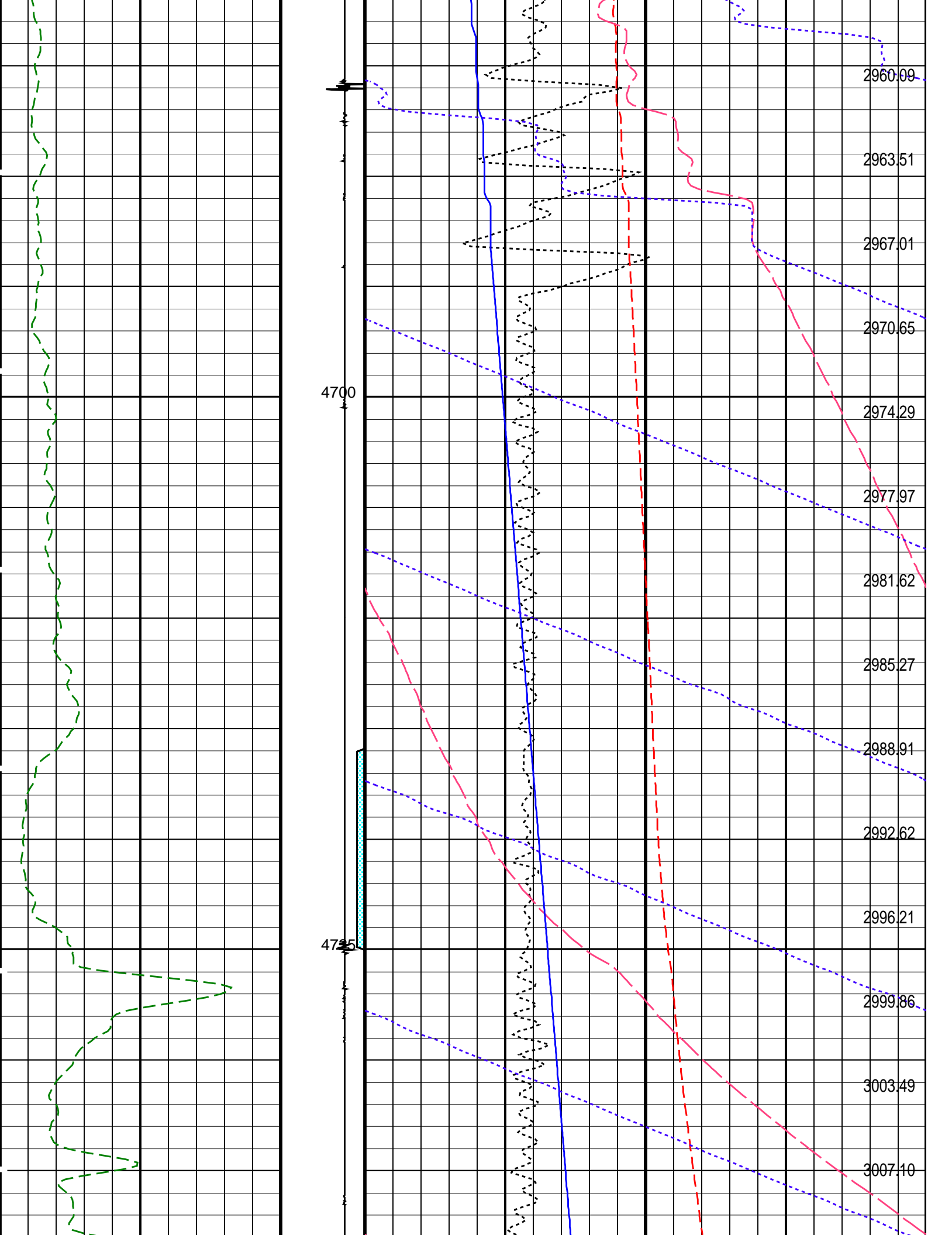
OP System Version: 14C0-302  
MCM

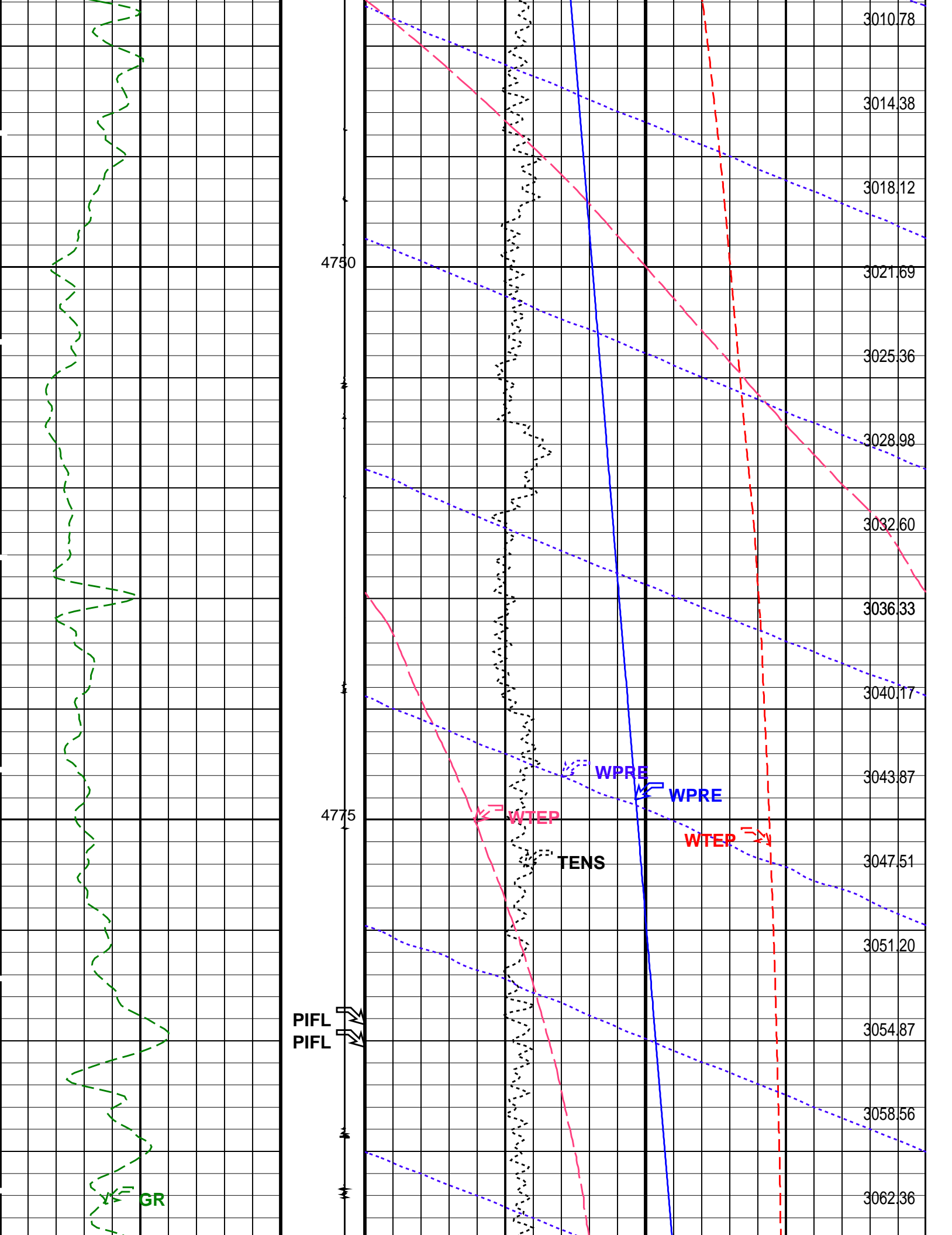
PSPT-A/B 14C0-302

PIP SUMMARY

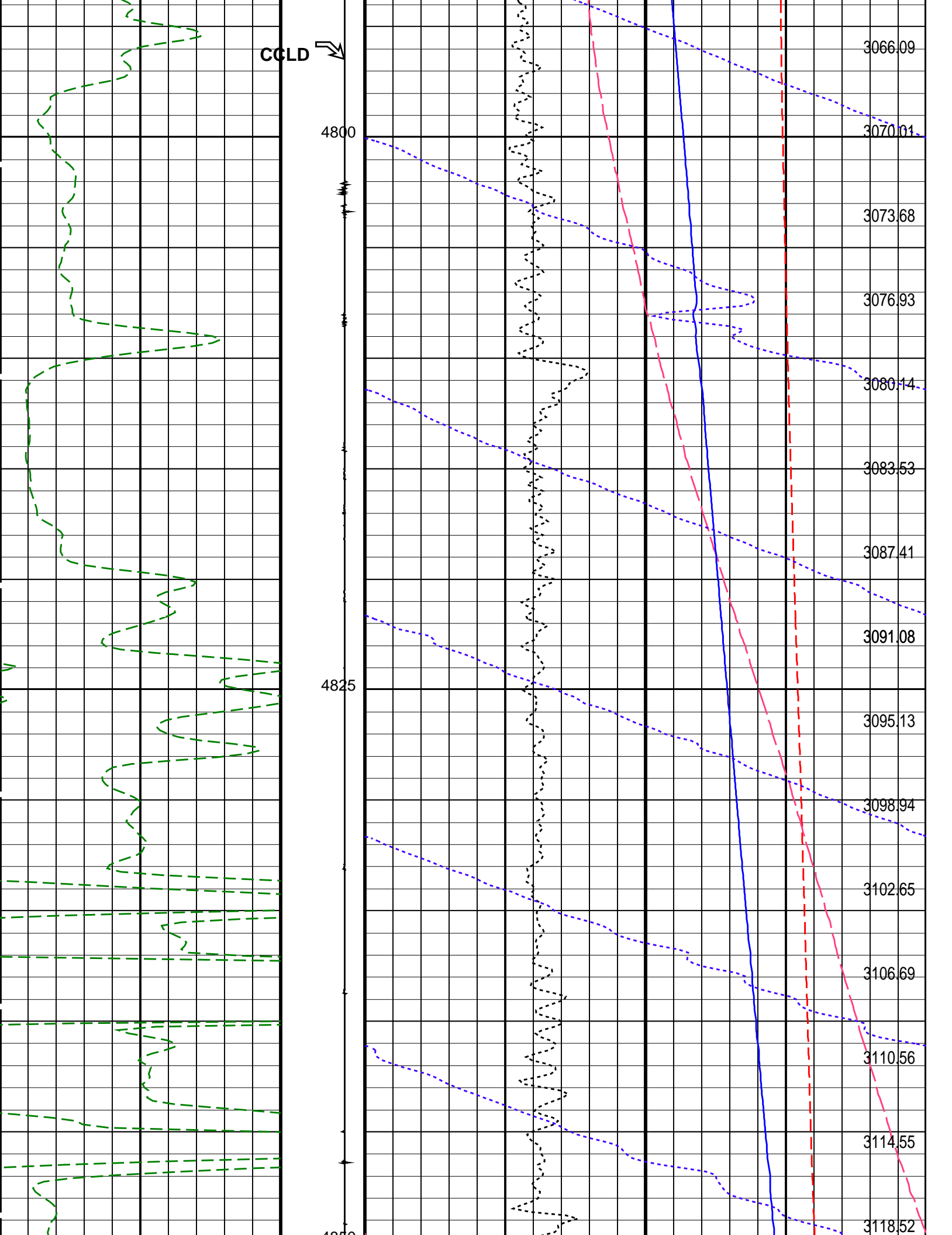
Time Mark Every 60 S

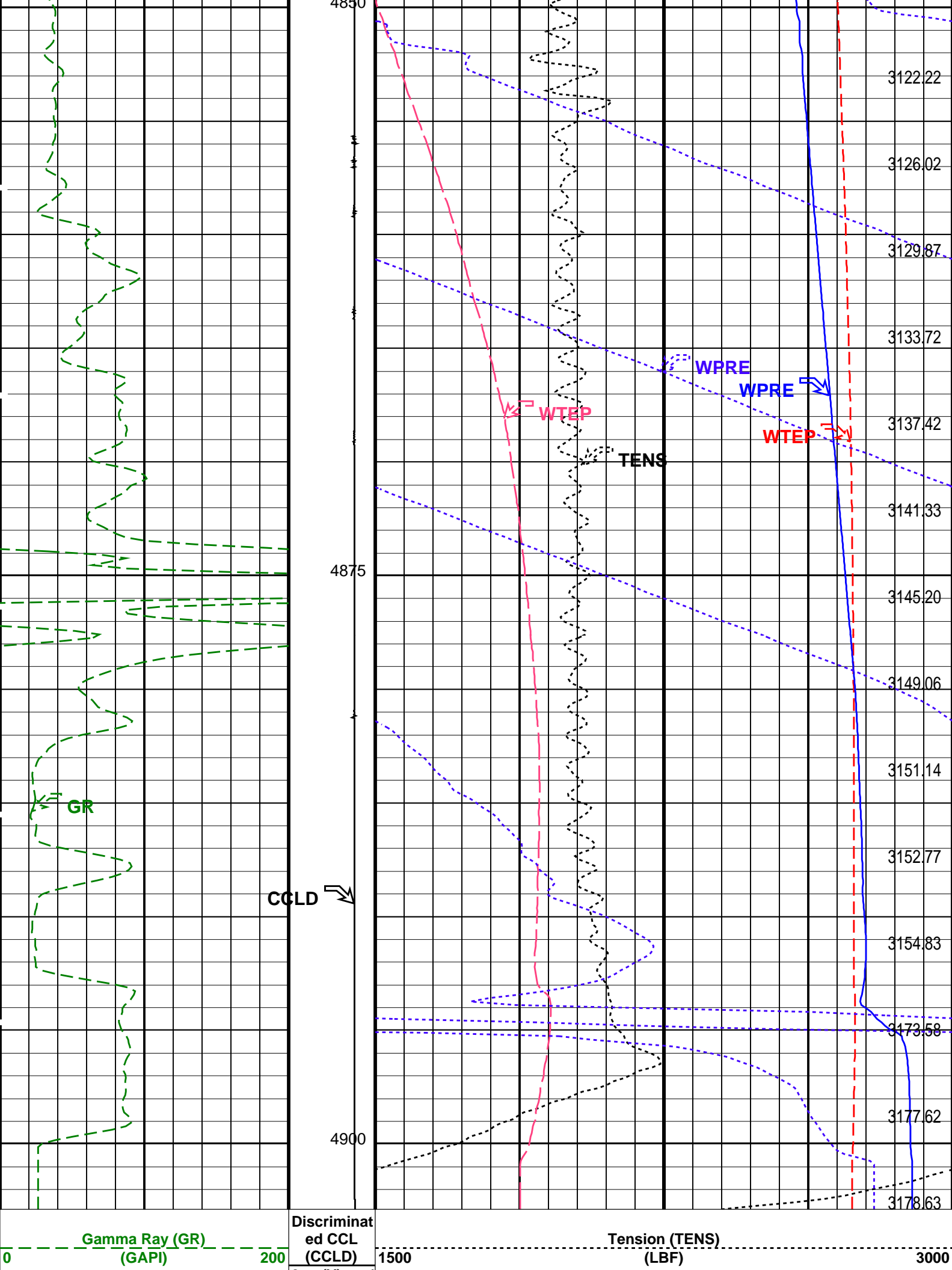


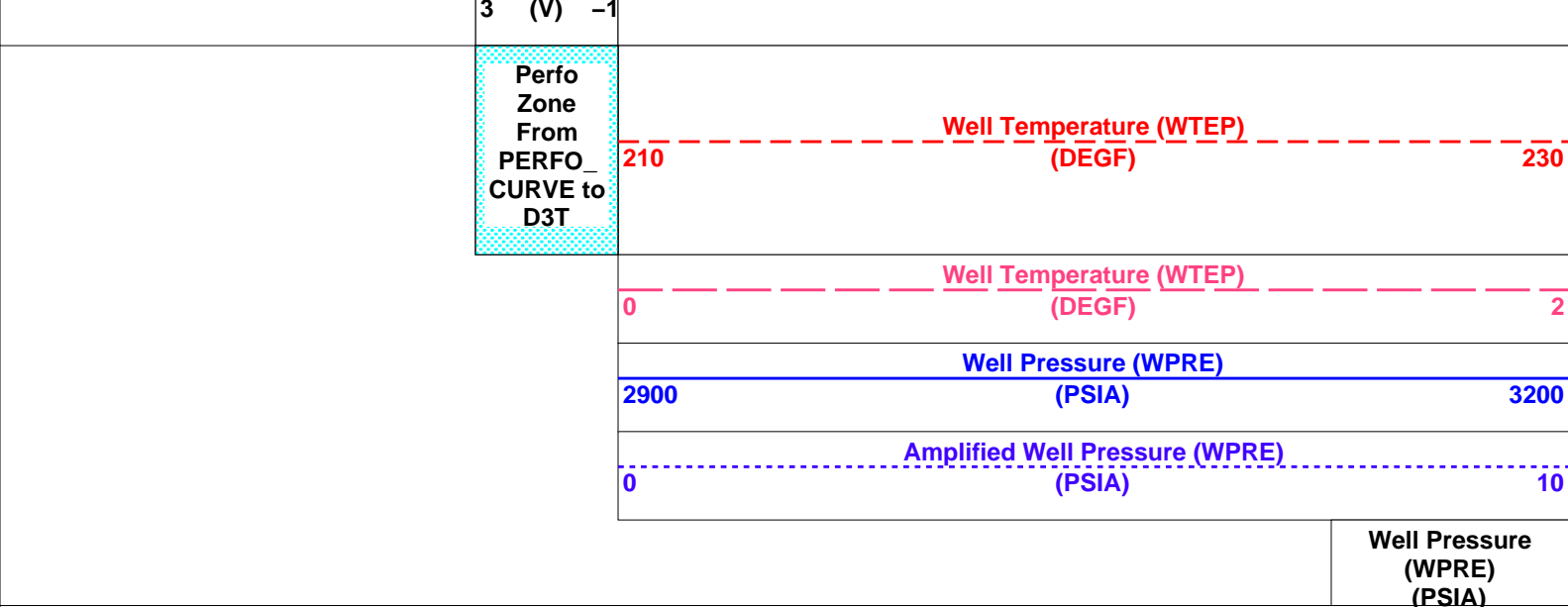












PIP SUMMARY

Time Mark Every 60 S

Format: PSP\_1 Vertical Scale: 1:200 Graphics File Created: 30-Jun-2006 13:13

OP System Version: 14C0-302

MCM

PSPT-A/B 14C0-302

Parameters							
DLIS Name		Description			Value		
System and Miscellaneous							
DO		Depth Offset for Playback			-2.1	M	
PP		Playback Processing			RECOMPUTE		
Input DLIS Files							
DEFAULT	PSP_013LUP	FN:12	PRODUCER	30-Jun-2006 10:58	4905.0 M		4671.1 M
Output DLIS Files							
DEFAULT	PSP_017PUP	FN:16	PRODUCER	30-Jun-2006 13:13			

Company: **Esso Australia Ltd.**

**Schlumberger**

Well: **A-16a**

Field: **Fortescue**

Rig : **Prod4 / Crane**

Country: **Australia**

Gamma Ray Survey