

Company: Esso Australia Ltd.

Well: A-12

Field: Fortescue

Rig: Prod4/Crane

Country: Australia

Gamma-Ray
Survey

LOCATION	
Gippsland Basin Bass Strait	Elev.: K.B. 34.5 m G.L. -69 m D.F. 34.5 m
Permanent Datum: _____ Log Measured From: K.B. _____ Drilling Measured From: K.B. _____	Elev.: 0 m 34.5 m above Perm. Datum

State: Victoria	Max. Well Deviation 49 deg	Longitude 148 16' 36.62" E	Latitude 038 24' 31.49" S
-----------------	-------------------------------	-------------------------------	------------------------------

Logging Date	25-Jun-2006
--------------	-------------

Run Number	One
------------	-----

Depth Driller	3231.5 m
---------------	----------

Schlumberger Depth	3230 m
--------------------	--------

Bottom Log Interval	3230 m
---------------------	--------

Top Log Interval	3125 m
------------------	--------

Casing Fluid Type	Production Fluids
-------------------	-------------------

Salinity	
----------	--

Density	
---------	--

Fluid Level	285 m
-------------	-------

BIT/CASING/TUBING STRING	
--------------------------	--

Bit Size	9.875 in
----------	----------

From	
------	--

To	
----	--

Casing/Tubing Size	7.625 in
--------------------	----------

Weight	29.7 lbm/ft
--------	-------------

Grade	N-80
-------	------

From	13.12 m
------	---------

To	3278 m
----	--------

Maximum Recorded Temperatures	222 degf				
-------------------------------	----------	--	--	--	--

Logger On Bottom	25-Jun-2006	Time	15:00		
------------------	-------------	------	-------	--	--

Unit Number	LEE001	Location	Prod4/Ausi		
-------------	--------	----------	------------	--	--

Recorded By	G Wright.				
-------------	-----------	--	--	--	--

Witnessed By	G Rimmer.				
--------------	-----------	--	--	--	--

Run 1

PVT DATA

Oil Density	
Water Salinity	
Gas Gravity	
Bo	

Bw	
----	--

1/Bg	
------	--

Bubble Point Pressure	
-----------------------	--

Bubble Point Temperature	
--------------------------	--

Solution GOR	
--------------	--

Maximum Deviation	49 deg
-------------------	--------

CEMENTING DATA

Primary/Squeeze	Primary
-----------------	---------

Casing String No	
------------------	--

Lead Cement Type	
------------------	--

Volume	
--------	--

Density	
---------	--

Water Loss	
------------	--

Additives	
-----------	--

Tail Cement Type	
------------------	--

Volume	
--------	--

Density	
---------	--

Water Loss	
------------	--

Additives	
-----------	--

Expected Cement Top	
---------------------	--

Logging Date

Run Number

Depth Driller

Schlumberger Depth

Bottom Log Interval

Top Log Interval

Casing Fluid Type

Salinity

Density

Fluid Level

BIT/CASING/TUBING STRING

Bit Size

From

To

Casing/Tubing Size

Weight

Grade

From

To

Maximum Recorded Temperatures

Logger On Bottom

Unit Number

Recorded By

Witnessed By

DEPTH SUMMARY LISTING

Depth System Equipment

Date Created: 25-JUN-2006 10:09:47

Depth Measuring Device	Tension Device	Logging Cable
Type: IDW-H Serial Number: 797 Calibration Date: 10-May-2006 Calibrator Serial Number: 1009 Calibration Cable Type: 2-32ZT Wheel Correction 1: -3 Wheel Correction 2: -3	Type: CMTD-C Serial Number: 1037 Calibration Date: 13-Jun-2006 Calibrator Serial Number: 1174 Calibration Gain: 1.35 Calibration Offset: 772.00	Type: 2-23ZT Serial Number: 22372 Length: 4999.94 M Conveyance Method: Wireline Rig Type: Offshore Mobile

Depth Control Parameters

Log Sequence:	Subsequent Log In the Well
Reference Log Name:	Fortescue A-12 Composite log
Reference Log Run Number:	1
Reference Log Date:	

Depth Control Remarks

1. Correlated to solar log provided by client
2. IDW used as primary depth control
3. Z-Chart used as secondary depth control.

DISCLAIMER

THE USE OF AND RELIANCE UPON THIS RECORDED-DATA BY THE HEREIN NAMED COMPANY (AND ANY OF ITS AFFILIATES, PARTNERS, REPRESENTATIVES, AGENTS, CONSULTANTS AND EMPLOYEES) IS SUBJECT TO THE TERMS AND CONDITIONS AGREED UPON BETWEEN SCHLUMBERGER AND THE COMPANY, INCLUDING: (a) RESTRICTIONS ON USE OF THE RECORDED-DATA; (b) DISCLAIMERS AND WAIVERS OF WARRANTIES AND REPRESENTATIONS REGARDING COMPANY'S USE OF AND RELIANCE UPON THE RECORDED-DATA; AND (c) CUSTOMER'S FULL AND SOLE RESPONSIBILITY FOR ANY INFERENCE DRAWN OR DECISION MADE IN CONNECTION WITH THE USE OF THIS RECORDED-DATA.

OTHER SERVICES1
OS1: None

REMARKS: RUN NUMBER 1
Log correlated to Exxon Mobil Fortescue A-12 composite log.
Objectives: Complete GR survey over the interval 3234m MDKB to 3120m MDKB.
Schlumberger HUD = 3234m MDKB.
SBHP = 3183 psia.
SBHT = 222 degf
Gas,fluid contact was at 285m MDKB.

Crew : Jake Annear & Andy Hall.

RUN 1
SERVICE ORDER #: AusI06297089
PROGRAM VERSION: 14C0-302
FLUID LEVEL: 285 m

LOGGED INTERVAL	START	STOP

EQUIPMENT DESCRIPTION

RUN 1RUN 2

SURFACE EQUIPMENT
WITM-A 792
PSC_16MHZ 806

DOWNHOLE EQUIPMENT

AH-SWBS/B 761

5.59

AH-SWBS/B 762

4.91

AH-SWBS/B 763

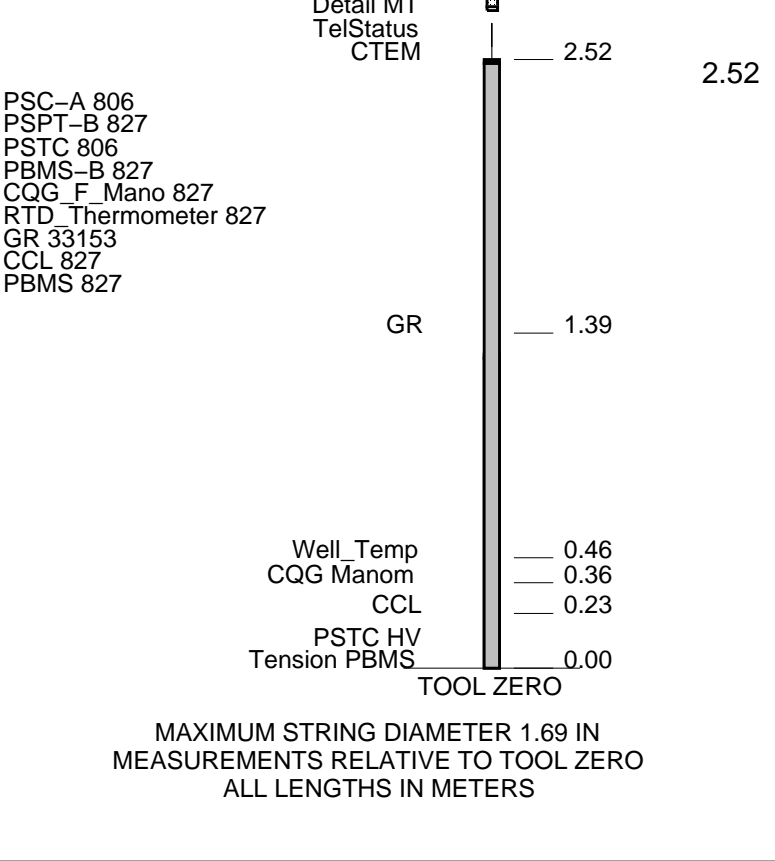
4.22

AH-SWBS/B 731

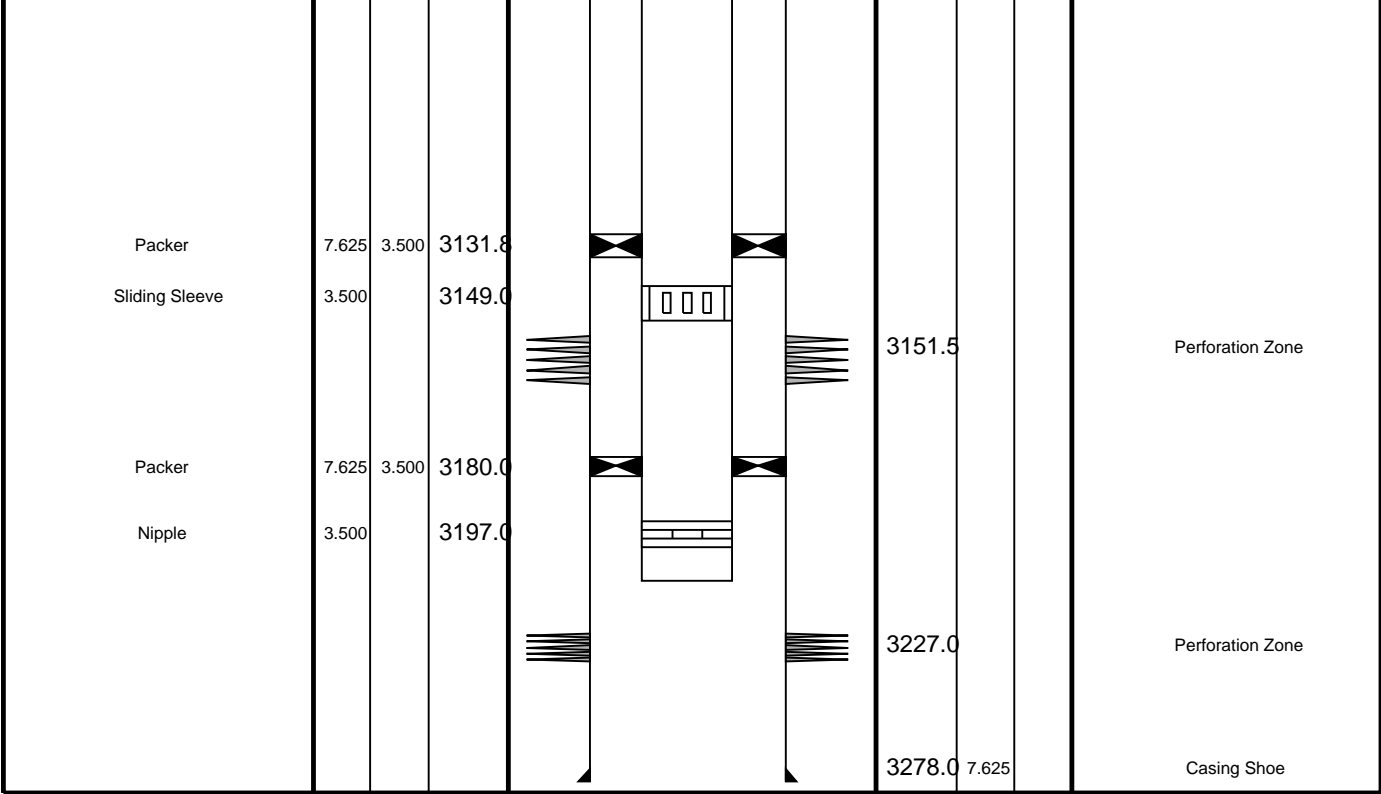
3.54

MH-SWHA/A 726

2.85



Production String	(in)		(m)	Well Schematic	(m)	(in)		Casing String
	OD	ID	MD		MD	OD	ID	
Tubing	3.500		12.9		9.4	10.750	7.625	Casing String Liner Hanger
Tubing Hanger	7.625	3.500	11.0					
Shutin Valve	3.500		444.6					
Gas Lift Mandrel	3.500		1202.0		901.0	10.750		Casing Shoe
Gas Lift Mandrel	3.500		1664.0					
Gas Lift Mandrel	3.500		2009.0					
Gas Lift Mandrel	3.500		2356.0					
Nipple	3.500		2370.0					



Schlumberger Job Event Summary

Time	Elapsed Time	Depth (M)	File
Simulated Log	25-Jun-2006 6:50	000:01	PSP_004LUP
Simulated Log	25-Jun-2006 14:03	000:04	PSP_006LUP
Simulated Log	25-Jun-2006 14:08	000:01	PSP_007LUP
Simulated Log	25-Jun-2006 14:09	000:01	PSP_008LUP
Log Pass (down)	25-Jun-2006 14:45	000:25	5.2 - 3256.6 PSP_009LDP
Log Pass (up)	25-Jun-2006 15:10	000:17	3256.5 - 3100.1 PSP_010LUP



Gamma-Ray Survey
3230m to 3125m MDKB

MAXIS Field Log

Input DLIS Files

DEFAULT	PSP_010LUP	FN:9	PRODUCER	25-Jun-2006 15:10	3256.5 M	3100.1 M
---------	------------	------	----------	-------------------	----------	----------

Output DLIS Files

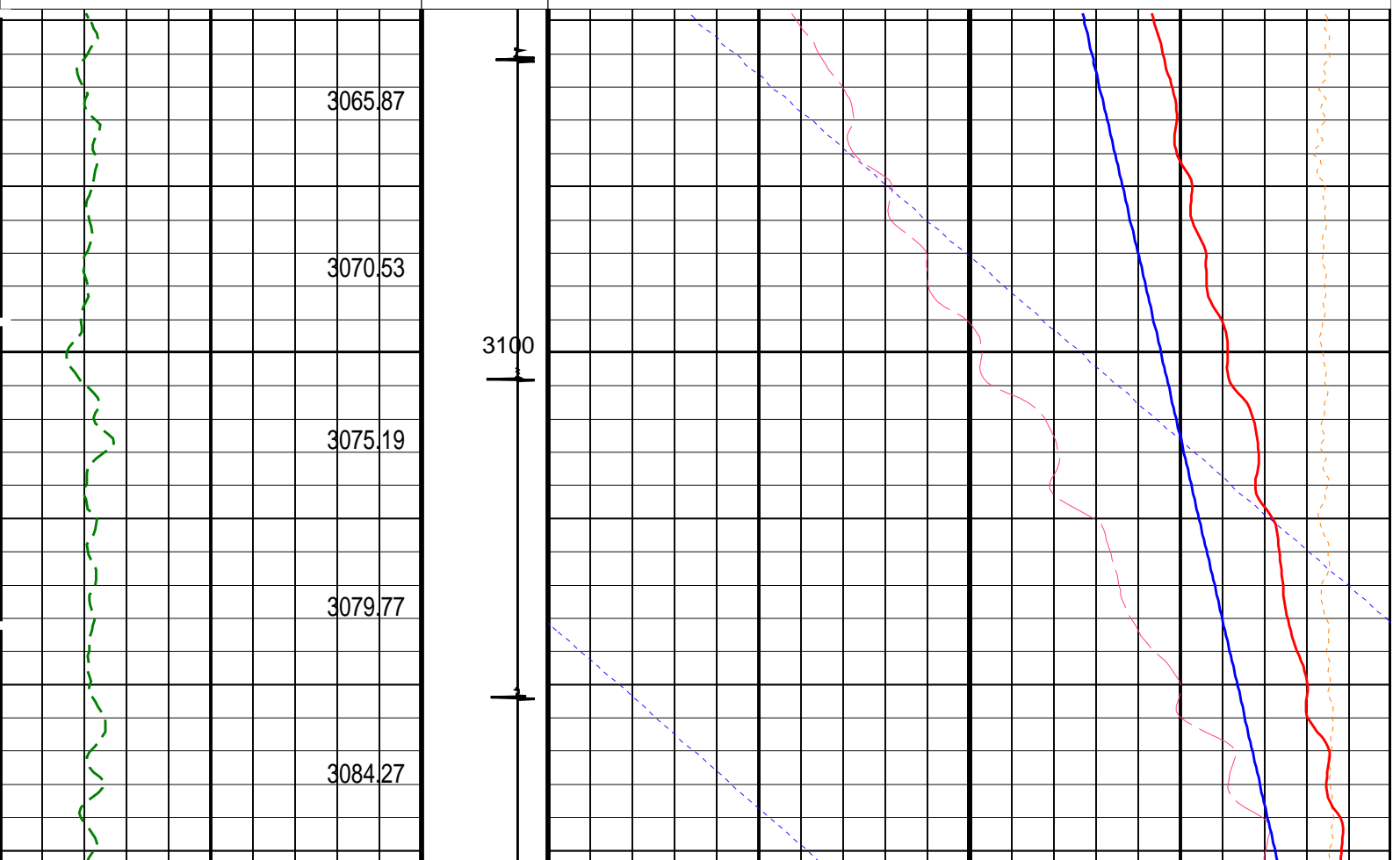
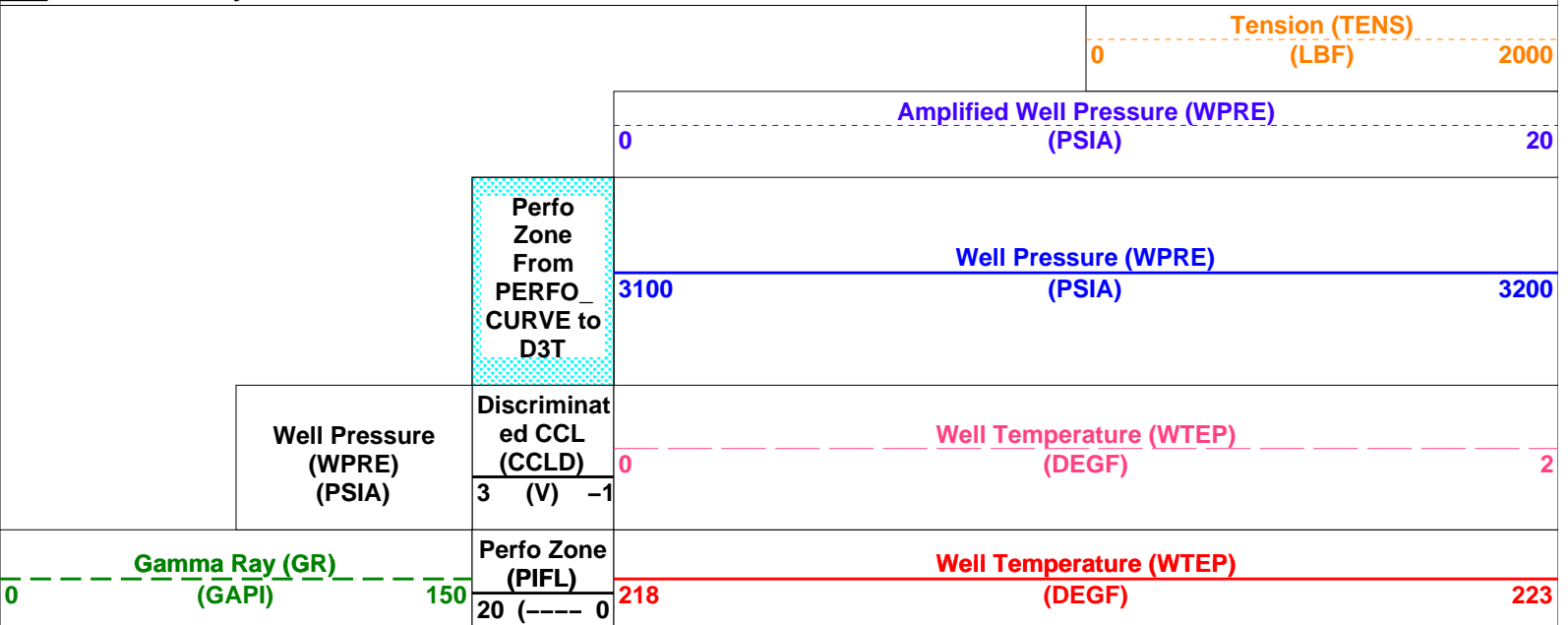
DEFAULT	PSP_012PUP	FN:11	PRODUCER	25-Jun-2006 15:37	3245.5 M	3089.6 M
---------	------------	-------	----------	-------------------	----------	----------

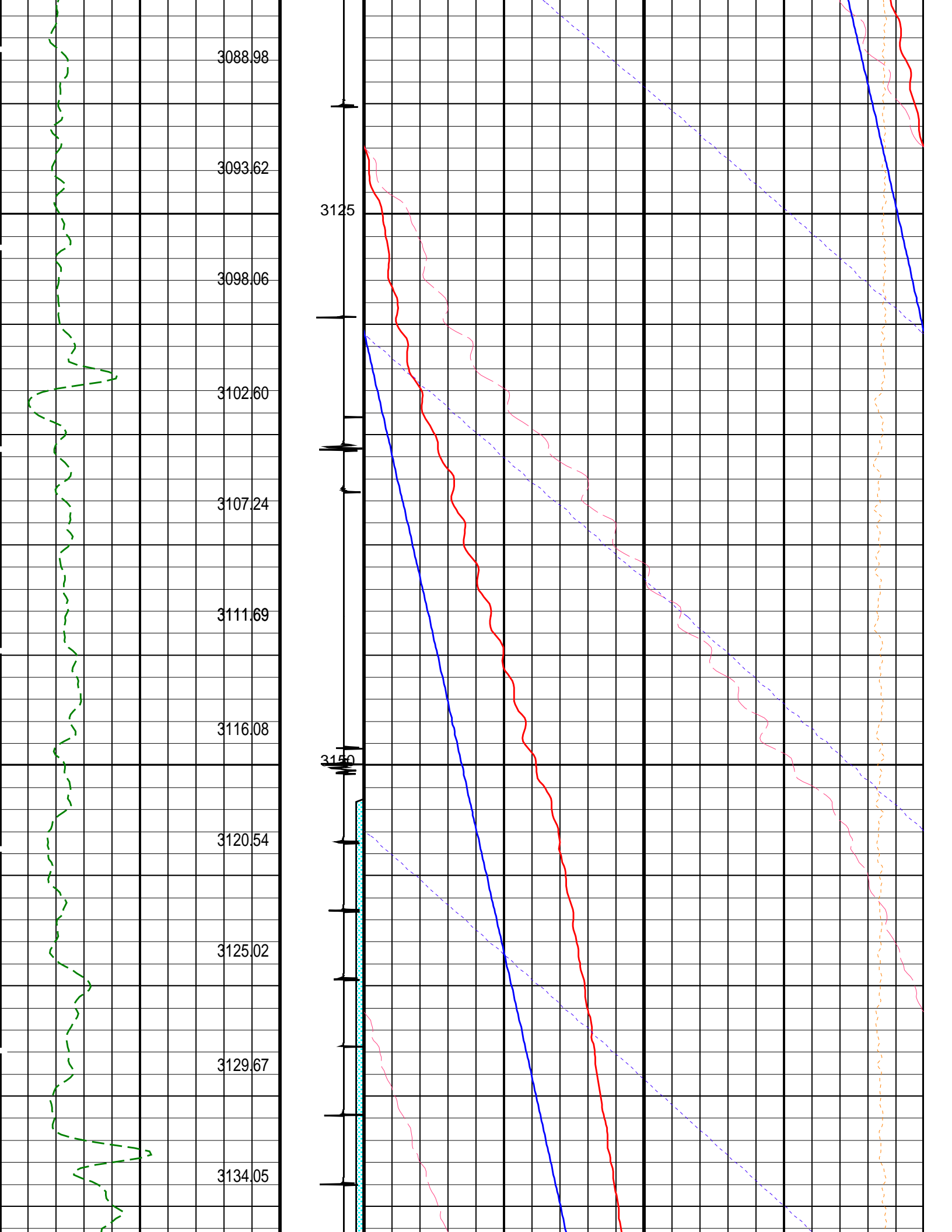
OP System Version: 14C0-302
MCM

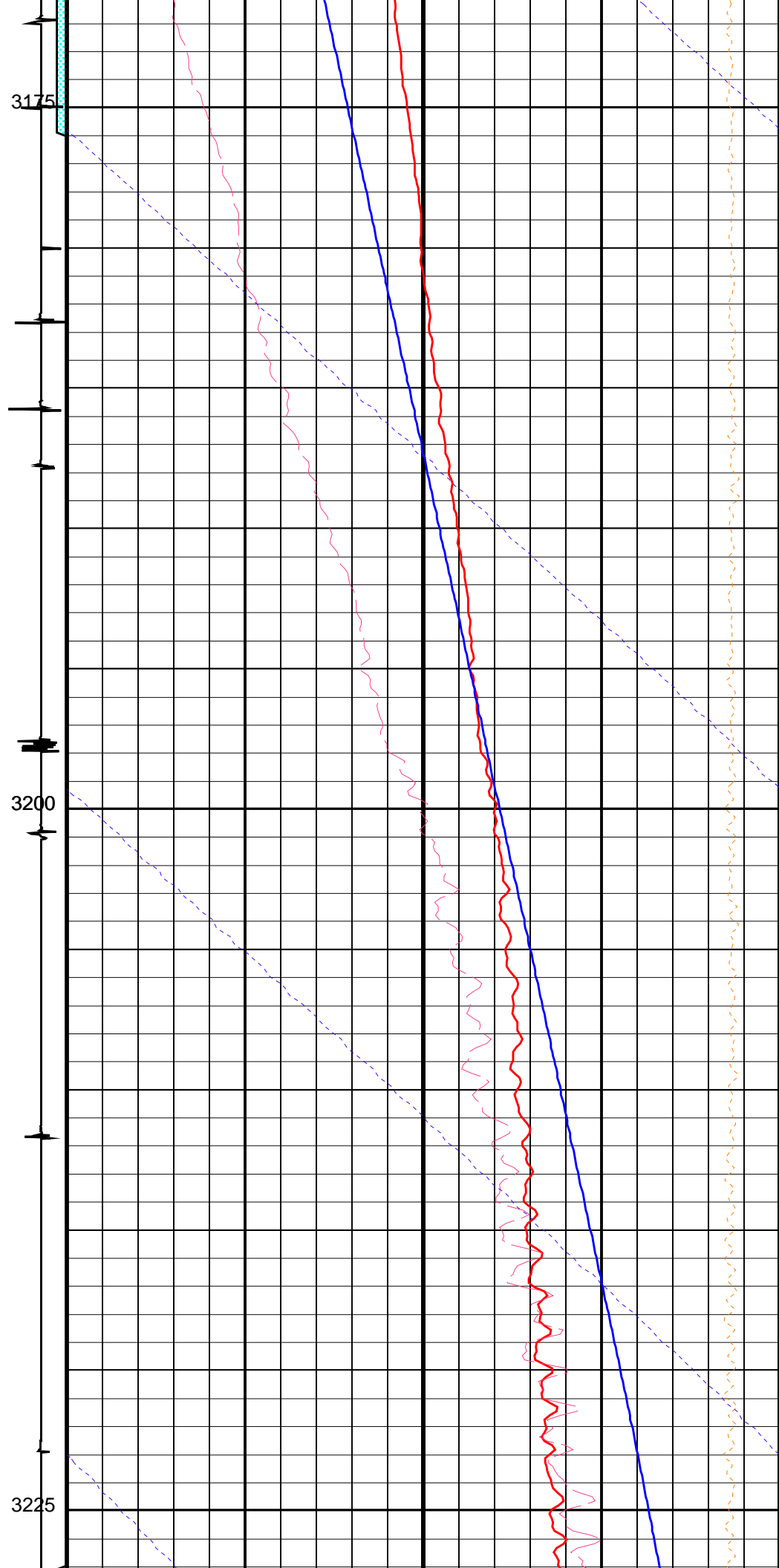
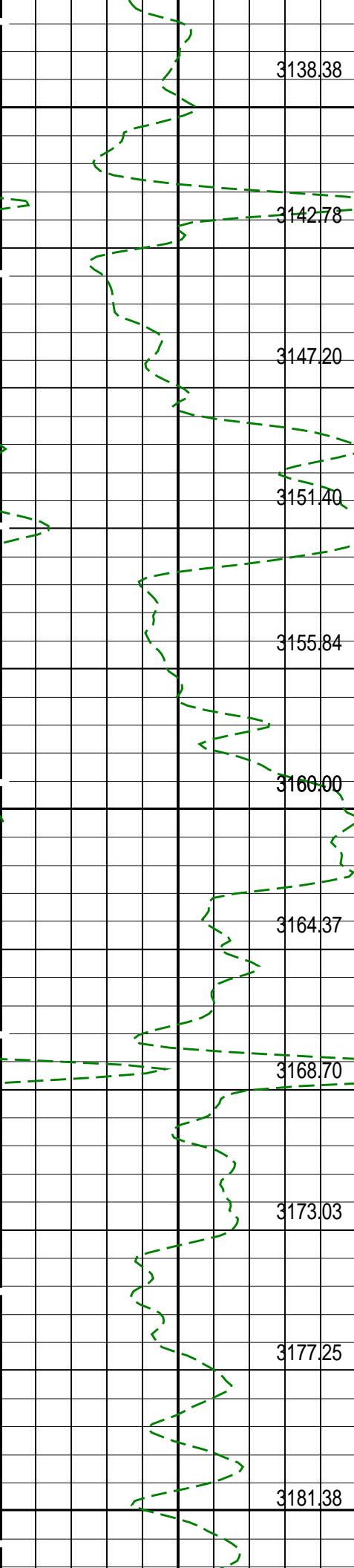
PSPT-A/B 14C0-302

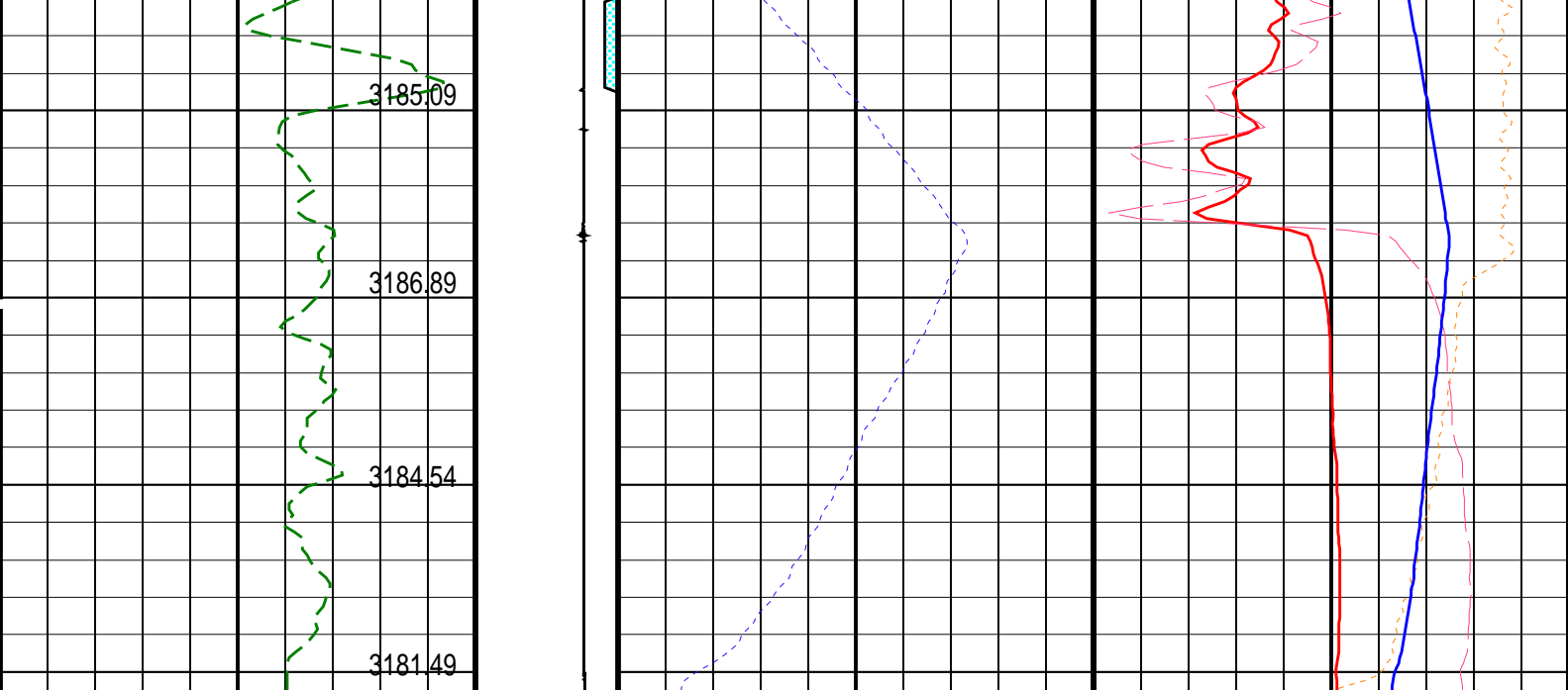
PIP SUMMARY

Time Mark Every 60 S









Gamma Ray (GR) (GAPI)		Perfo Zone (PIFL)	Well Temperature (WTEP) (DEGF)	
0	150	20 (---- 0	218	223
Well Pressure (WPRE) (PSIA)	Discriminat ed CCL (CCLD)	Well Temperature (WTEP) (DEGF)		
		0	2	
	3 (V) -1	Well Pressure (WPRE) (PSIA)		
		3100	3200	
Amplified Well Pressure (WPRE) (PSIA)				
0		20		
		Tension (TENS) (LBF)		
		0	2000	

PIP SUMMARY

Time Mark Every 60 S

Format: PSP_1 Vertical Scale: 1:200 Graphics File Created: 25-Jun-2006 15:37

OP System Version: 14C0-302
MCM

PSPT-A/B 14C0-302

Parameters		
DLIS Name	Description	Value
DO PP	System and Miscellaneous Depth Offset for Playback Playback Processing	-11.0 M NORMAL

Input DLIS Files						
DEFAULT	PSP_010LUP	FN:9	PRODUCER	25-Jun-2006 15:10	3256.5 M	3100.1 M
Output DLIS Files						
DEFAULT	PSP_012PUP	FN:11	PRODUCER	25-Jun-2006 15:37		

Well: **A-12**
Field: **Fortescue**
Rig: **Prod4/Crane**
Country: **Australia**

Gamma-Ray
Survey