

Company: Esso Australia Ltd.

Well: A-34

Field: Fortescue

Rig: Prod4/Crane

Country: Australia

Spinner-GR-Pressure
Dual Deft-Gradio-CCL
Temp-Survey

Prod4/Crane
Rig: Fortescue
Field: Gippsland
Location: A-34
Well: Esso Australia Ltd.
Company:

LOCATION

Gippsland
Basin
Bass Strait
Elev.: K.B. 39.6 m
G.L. -69 m
D.F. 39.6 m

Permanent Datum: M.S.L.
Log Measured From: K.B.
Drilling Measured From: K.B.

State: Victoria
Max. Well Deviation 52 deg
Longitude 148 16' 36.62" E
Latitude 038 24' 31.49" S

Logging Date 23-Jun-2006

Run Number One

Depth Driller 3333 m

Schlumberger Depth 3330 m

Bottom Log Interval 3330 m

Top Log Interval 3315 m

Casing Fluid Type Production Fluids

Salinity

Density

Fluid Level

BIT/CASING/TUBING STRING

Bit Size 8.500 in

From

To

Casing/Tubing Size

Weight 7.000 in

Grade 26 lbm/ft

From L-80

To 3163 m

Maximum Recorded Temperatures 3582.1 m

Logger On Bottom 224 degf

Unit Number 23-Jun-2006

Recorded By LEE001

Witnessed By Prod4/Ausl

G Wright.

Run 1

Oil Density
Water Salinity
Gas Gravity

Bo

Bw

1/Bq

Bubble Point Pressure

Bubble Point Temperature

Solution GOR

Maximum Deviation

CEMENTING DATA

Primary/Squeeze

Casing String No

Lead Cement Type

Volume

Density

Water Loss

Additives

Tail Cement Type

Volume

Density

Water Loss

Additives

Expected Cement Top

Logging Date

Run Number

Depth Driller

Schlumberger Depth

Bottom Log Interval

Top Log Interval

Casing Fluid Type

Salinity

Density

Fluid Level

BIT/CASING/TUBING STRING

Bit Size

From

To

Casing/Tubing Size

Weight

Grade

From

To

Maximum Recorded Temperatures

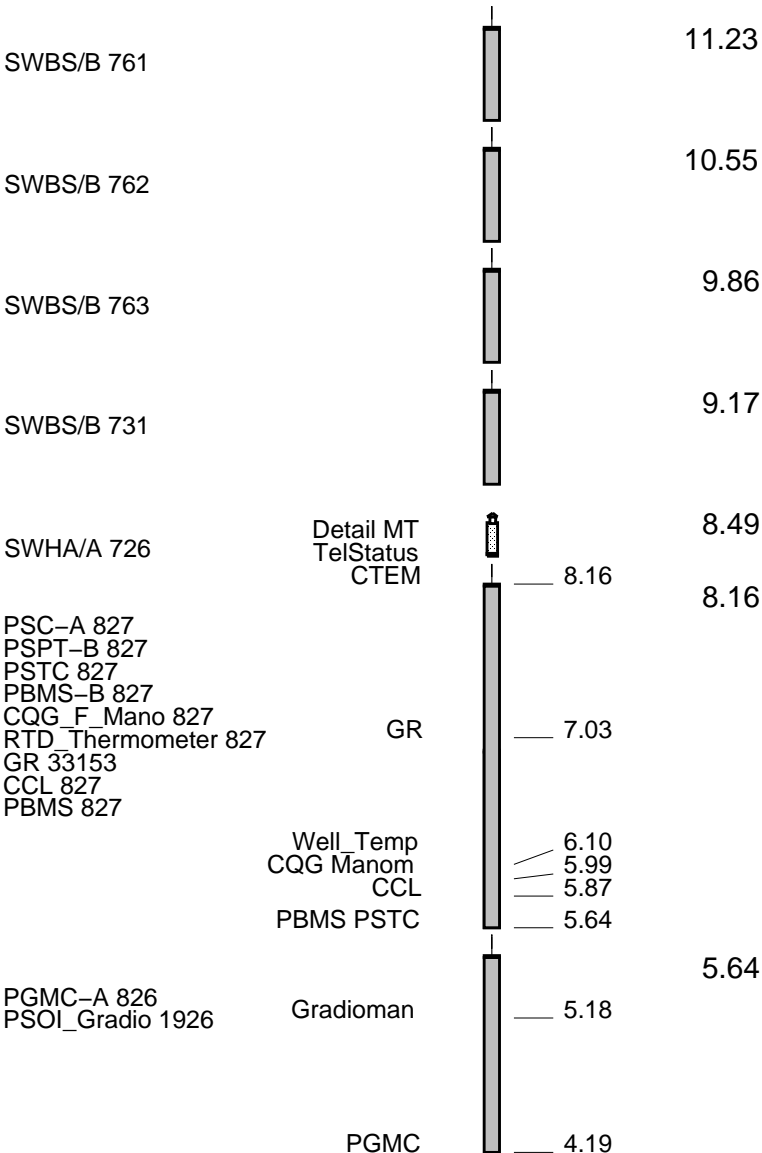
Logger On Bottom

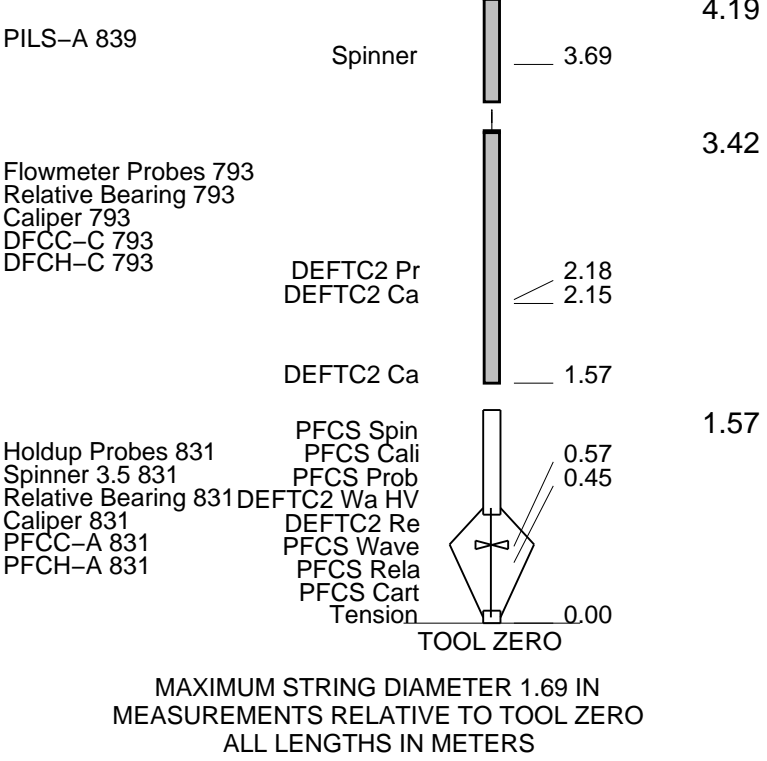
Unit Number

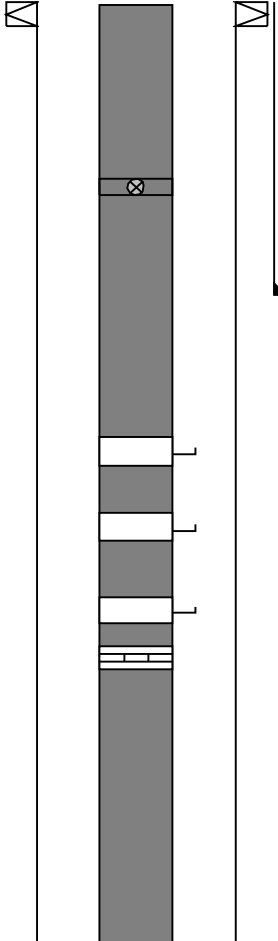
Recorded By

Witnessed By

Oil – gas contact at 90m MDKB.





| Production String | (in) | | (m) | Well Schematic | (m) | (in) | | Casing String |
|-------------------|-------|-------|--------|---|-------|--------|--------|---------------|
| | OD | ID | MD | | MD | OD | ID | |
| Tubing | 3.500 | 2.992 | 18.6 |  | 13.0 | 13.375 | 12.615 | Casing String |
| | | | | | 13.0 | 9.625 | 8.681 | Casing String |
| | | | | | 13.0 | 12.615 | 9.625 | Liner Hanger |
| SSSV | 3.500 | 2.750 | 466.1 | | | | | |
| | | | | | 631.5 | 13.375 | 12.615 | Casing Shoe |
| Gas Lift Mandrel | 3.500 | 2.920 | 1332.8 | | | | | |
| Gas Lift Mandrel | 3.500 | 2.920 | 1622.1 | | | | | |
| Gas Lift Mandrel | 3.500 | 2.920 | 1918.2 | | | | | |
| Profile Nipple | 3.500 | 2.750 | 1934.8 | | | | | |

[illegible]

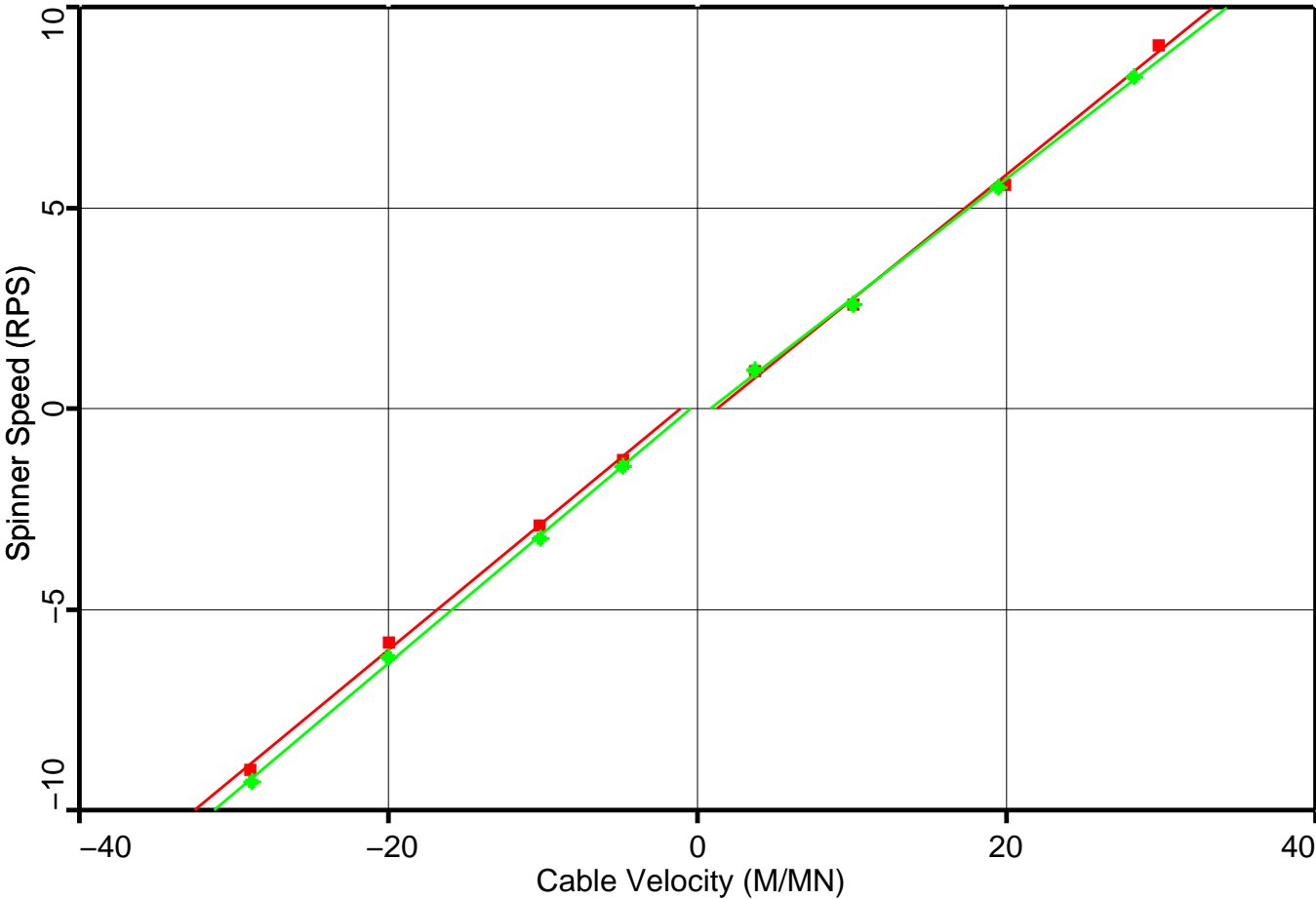
| |
|--------------------------------|
| Schlumberger Job Event Summary |
|--------------------------------|

| Time | Elapsed Time | Depth (M) | File |
|------|--------------|-----------|------|
|------|--------------|-----------|------|

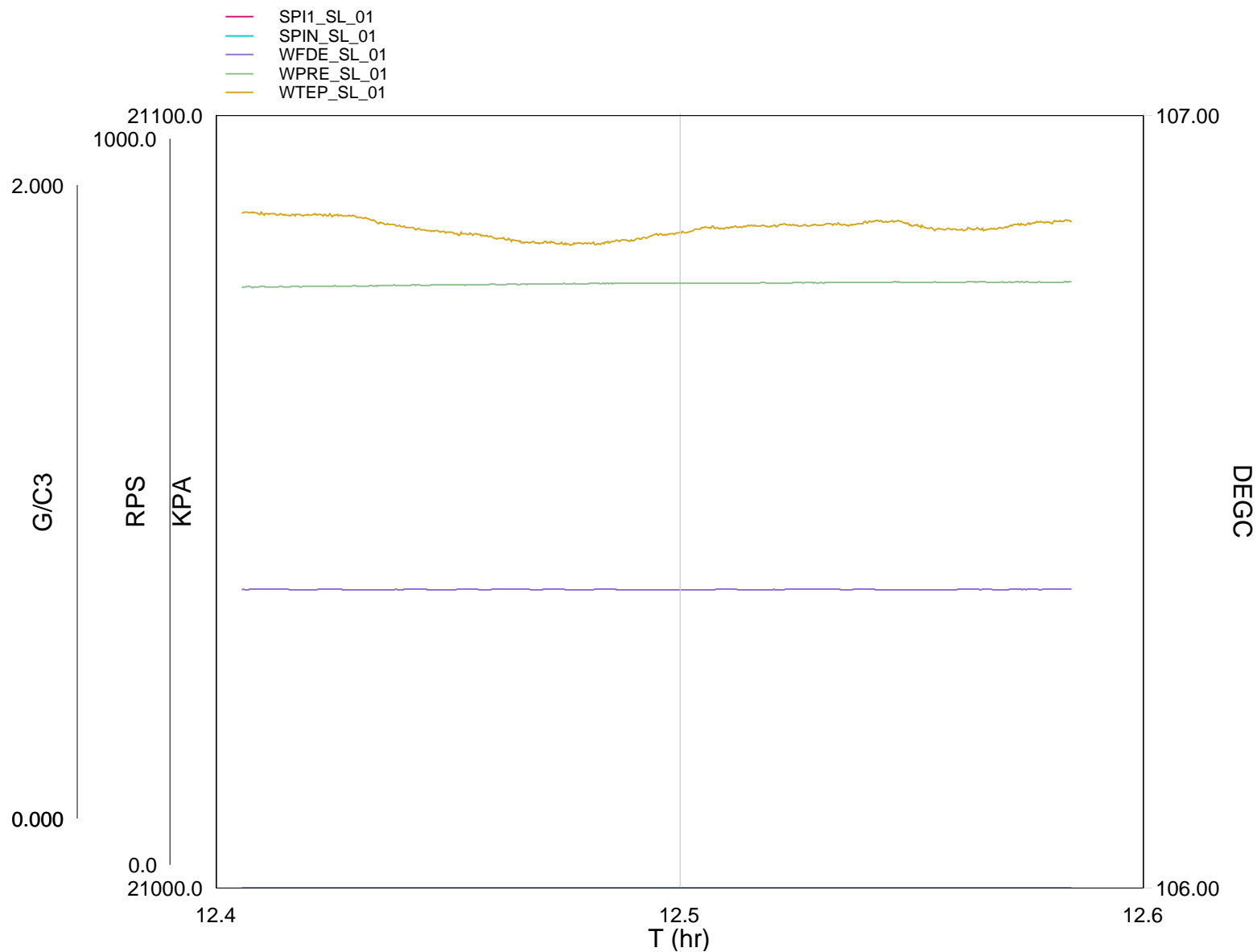
| | | | |
|-----------------|--------------------------|-----------------|-------------------------|
| Log Pass (down) | 23-Jun-2006 10:35 000:45 | 14.0 - 3283.2 | FCS_DEFT_ILS_GMS_015LDP |
| Log Pass (down) | 23-Jun-2006 11:21 000:08 | 3275.1 - 3338.0 | FCS_DEFT_ILS_GMS_016LDP |
| Log Pass (up) | 23-Jun-2006 11:29 000:10 | 3337.9 - 3292.3 | FCS_DEFT_ILS_GMS_017LUP |
| Log Pass (down) | 23-Jun-2006 11:41 000:11 | 3287.9 - 3335.0 | FCS_DEFT_ILS_GMS_018LDP |
| Log Pass (up) | 23-Jun-2006 11:52 000:04 | 3335.0 - 3294.9 | FCS_DEFT_ILS_GMS_019LUP |
| Log Pass (down) | 23-Jun-2006 11:59 000:03 | 3286.8 - 3345.5 | FCS_DEFT_ILS_GMS_020LDP |
| Log Pass (up) | 23-Jun-2006 12:06 000:04 | 3345.5 - 3294.9 | FCS_DEFT_ILS_GMS_021LUP |
| Log Pass (down) | 23-Jun-2006 12:10 000:01 | 3286.8 - 3305.3 | FCS_DEFT_ILS_GMS_022LDP |
| Log Pass (down) | 23-Jun-2006 12:12 000:02 | 3286.8 - 3345.3 | FCS_DEFT_ILS_GMS_023LDP |
| Log Pass (up) | 23-Jun-2006 12:15 000:02 | 3345.3 - 3294.9 | FCS_DEFT_ILS_GMS_024LUP |
| Station Log | 23-Jun-2006 12:24 000:11 | 3325.5 - 1.6 | FCS_DEFT_ILS_GMS_025LTP |

Production Logging Quicklook Spinner Calibration

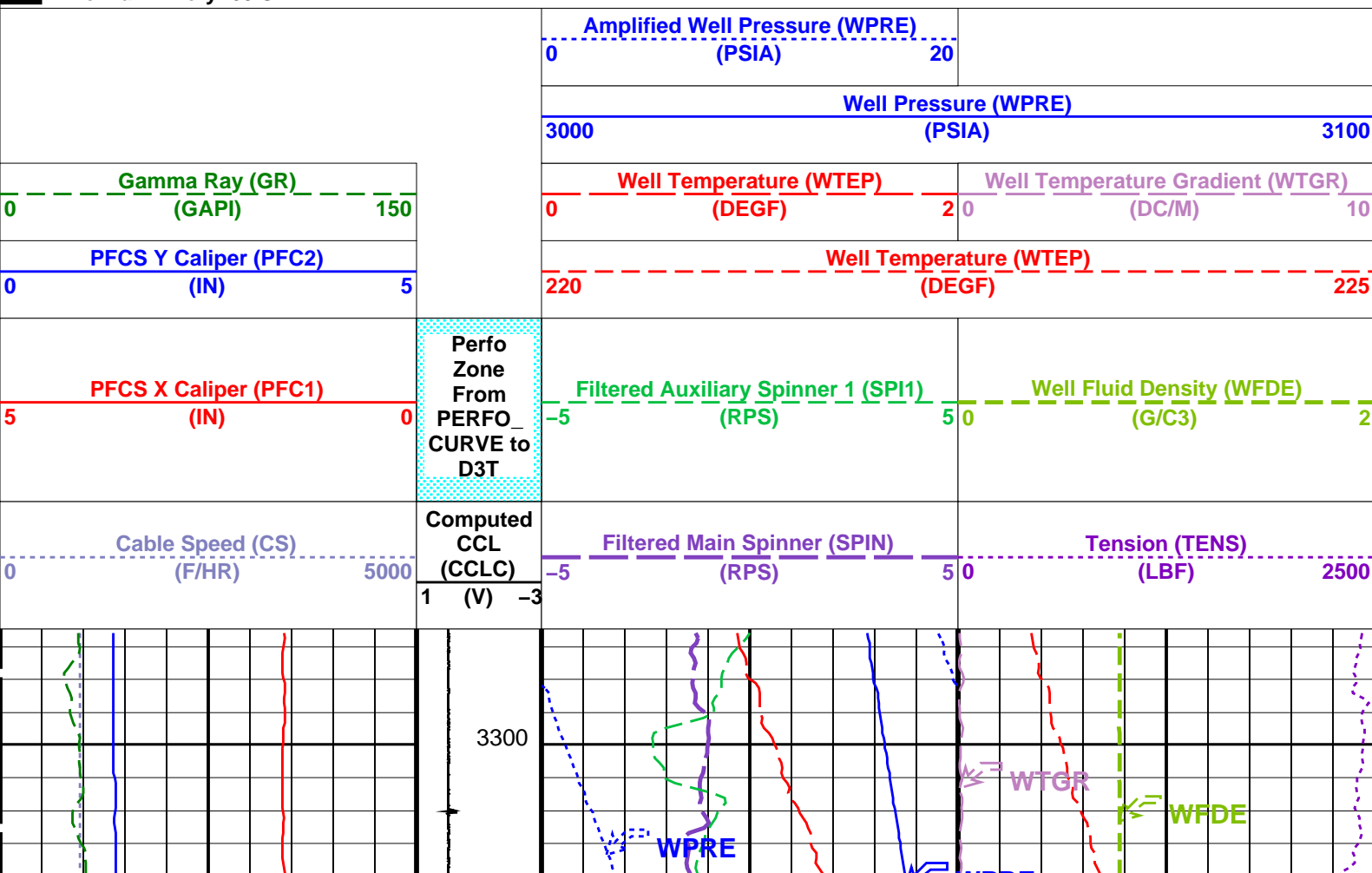
| | Zone Depth | Fluid Vel. | Positive Spinner | | | Negative Spinner | | |
|---|--------------------------|------------|------------------|---------------------|---------|------------------|---------------------|---------|
| | (M) | (M/MN) | Slope (RSMM) | Intercept (M/MN) | Correl. | Slope (RSMM) | Intercept (M/MN) | Correl. |
| ■ | Zone 1 3304.0 – 3300.0 : | –1.\$ | 0.3114 | 1.3 | 0.998 | 0.3179 | –1.1 | 0.999 |
| ◆ | Zone 2 3315.0 – 3310.0 : | –1.\$ | 0.2997 | 0.9 | 0.999 | 0.324 | –0.4 | 1 |

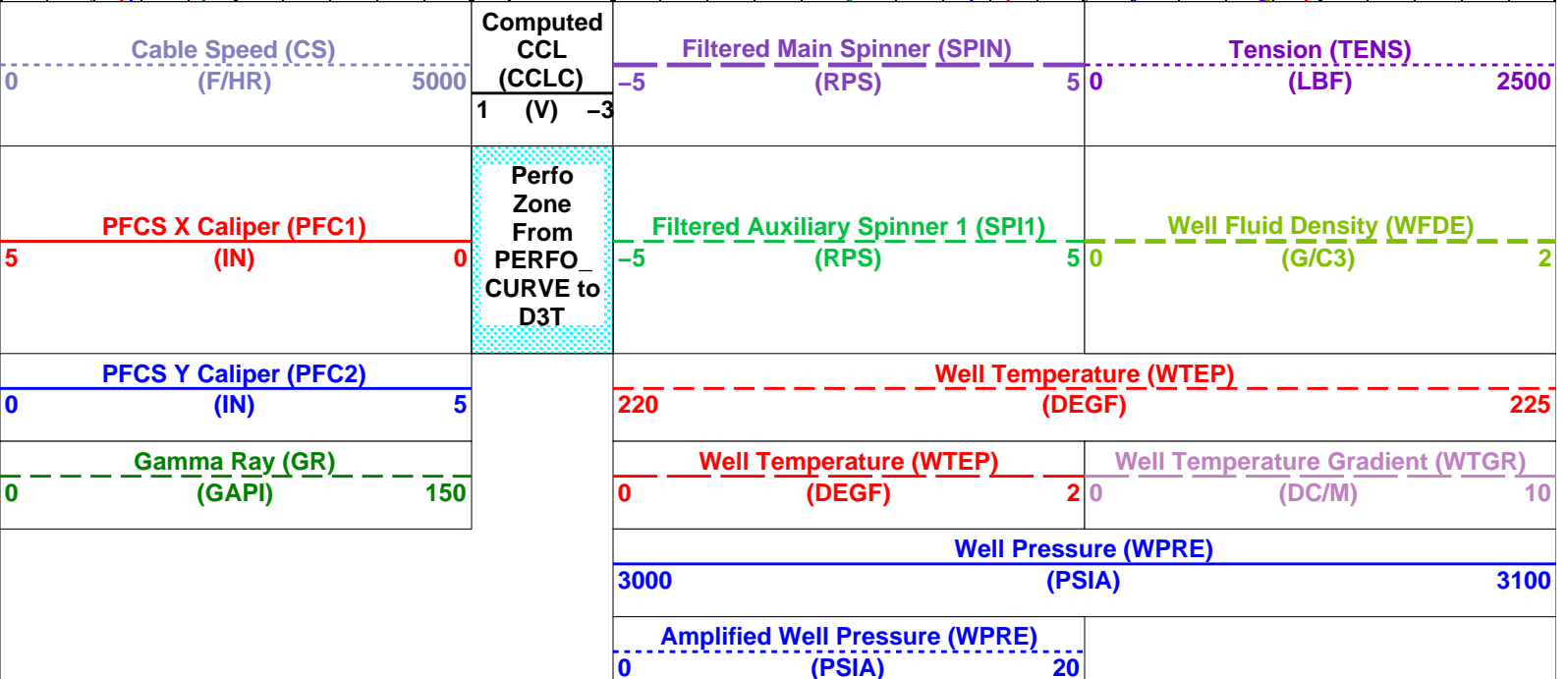
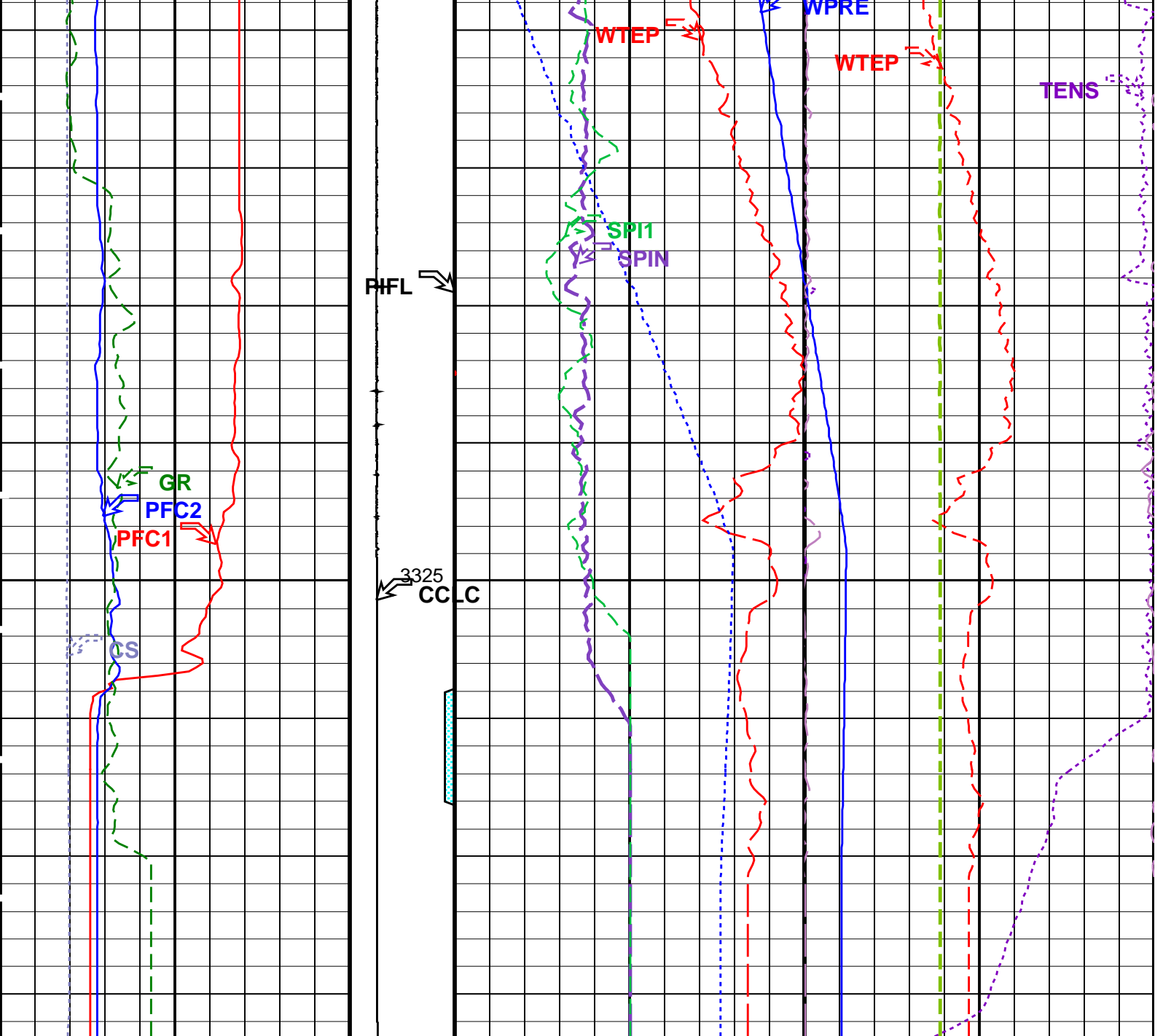


Static Station @ 3325m MDKB



| TIME | TOJ | DEGF | PSIA |
|-----------|---------|----------|-----------|
| 8610.0000 | 12.3872 | 224.0418 | 3052.5526 |
| 8640.0000 | 12.4104 | 224.3693 | 3057.0850 |
| 8670.0000 | 12.4187 | 224.3665 | 3057.0846 |
| 8700.0000 | 12.4270 | 224.3672 | 3057.0924 |
| 8730.0000 | 12.4354 | 224.3514 | 3057.0985 |
| 8760.0000 | 12.4437 | 224.3365 | 3057.1151 |
| 8790.0000 | 12.4520 | 224.3231 | 3057.1222 |
| 8820.0000 | 12.4604 | 224.3137 | 3057.1222 |
| 8850.0000 | 12.4687 | 224.3041 | 3057.1351 |
| 8880.0000 | 12.4770 | 224.3000 | 3057.1369 |
| 8910.0000 | 12.4854 | 224.3063 | 3057.1434 |
| 8940.0000 | 12.4937 | 224.3190 | 3057.1505 |
| 8970.0000 | 12.5020 | 224.3292 | 3057.1477 |
| 9000.0000 | 12.5104 | 224.3383 | 3057.1502 |
| 9030.0000 | 12.5187 | 224.3425 | 3057.1512 |
| 9060.0000 | 12.5270 | 224.3452 | 3057.1572 |
| 9090.0000 | 12.5354 | 224.3465 | 3057.1620 |
| 9120.0000 | 12.5437 | 224.3526 | 3057.1655 |
| 9150.0000 | 12.5520 | 224.3406 | 3057.1655 |
| 9180.0000 | 12.5604 | 224.3336 | 3057.1677 |





Time Mark Every 60 S

Format: PSP_1 Vertical Scale: 1:200

PIP SUMMARY

Graphics File Created: 23-Jun-2006 13:14

OP System Version: 14C0-302

MCM

PFCs-A14C0-302DEFT-C214C0-302

PILS-A14C0-302PGMC-A14C0-302

PSPT-B14C0-302

Parameters

| DLIS Name | Description | Value |
|--|---|----------------|
| PFCs-A: PSP Flow and caliper Tool | | |
| AMOD | Spinner Filter Averaging Mode | LINEAR_AVERAGE |
| SDCF | Spinner Depth Constant Filter | 6 |
| SPI1 | Auxiliary Spinner 1 Flowmeter Sonde | PILS-A |
| SPIN | Main Spinner Flowmeter Sonde | PFCs-A_3.5 |
| PILS-A: PSP In Line Spinner Flowmeter | | |
| AMOD | Spinner Filter Averaging Mode | LINEAR_AVERAGE |
| SDCF | Spinner Depth Constant Filter | 6 |
| SPI1 | Auxiliary Spinner 1 Flowmeter Sonde | PILS-A |
| SPIN | Main Spinner Flowmeter Sonde | PFCs-A_3.5 |
| PGMC-A: PSP Gradiomanometer Measurement Module | | |
| GCPG | Gradio Surf.Cal Diff.Pres Gain | 1 |
| GCPO | Gradio Surf.Cal Diff.Pres Offset | 0 |
| PDSH | Gradio Correction Density Shift | 0 |
| PSPT-B: Production Services Logging Platform | | |
| GDEV | Average Angular Deviation of Borehole from Normal | 40 |
| System and Miscellaneous | | |
| DO | Depth Offset for Playback | 3.6 |
| PP | Playback Processing | NORMAL |

Input DLIS Files

| | | | | | | |
|---------|-------------------------|-------|----------|-------------------|----------|----------|
| DEFAULT | FCS_DEFT_ILS_GMS_017LUP | FN:16 | PRODUCER | 23-Jun-2006 11:29 | 3337.9 M | 3292.3 M |
|---------|-------------------------|-------|----------|-------------------|----------|----------|

Output DLIS Files

| | | | | | | |
|---------|-------------------------|-------|----------|-------------------|--|--|
| DEFAULT | FCS_DEFT_ILS_GMS_039PUP | FN:37 | PRODUCER | 23-Jun-2006 13:14 | | |
|---------|-------------------------|-------|----------|-------------------|--|--|

Input DLIS Files

| | | | | | | |
|---------|-------------------------|-------|----------|-------------------|----------|----------|
| DEFAULT | FCS_DEFT_ILS_GMS_017LUP | FN:16 | PRODUCER | 23-Jun-2006 11:29 | 3337.9 M | 3292.3 M |
|---------|-------------------------|-------|----------|-------------------|----------|----------|

Output DLIS Files

| | | | | | | |
|---------|-------------------------|-------|----------|-------------------|----------|----------|
| DEFAULT | FCS_DEFT_ILS_GMS_039PUP | FN:37 | PRODUCER | 23-Jun-2006 13:14 | 3341.5 M | 3296.4 M |
|---------|-------------------------|-------|----------|-------------------|----------|----------|

OP System Version: 14C0-302

MCM

PFCs-A14C0-302DEFT-C214C0-302

PILS-A14C0-302PGMC-A14C0-302

PSPT-B14C0-302

Pipe Ovalisation Between PFC1 and PFC2

Well Diameter From PFC2 to PFCs_T1

Well Diameter From PFC1 to PFCs_T1

Well Fluid Density (WFDE)

0 (G/C3) 1

PFCs Fluid Resistivity (DRES)

0 (OHMM) 360

PFCs Spinner (SPIN)

-5 (RPS) 5

Filtered Bubble Count (FBM)

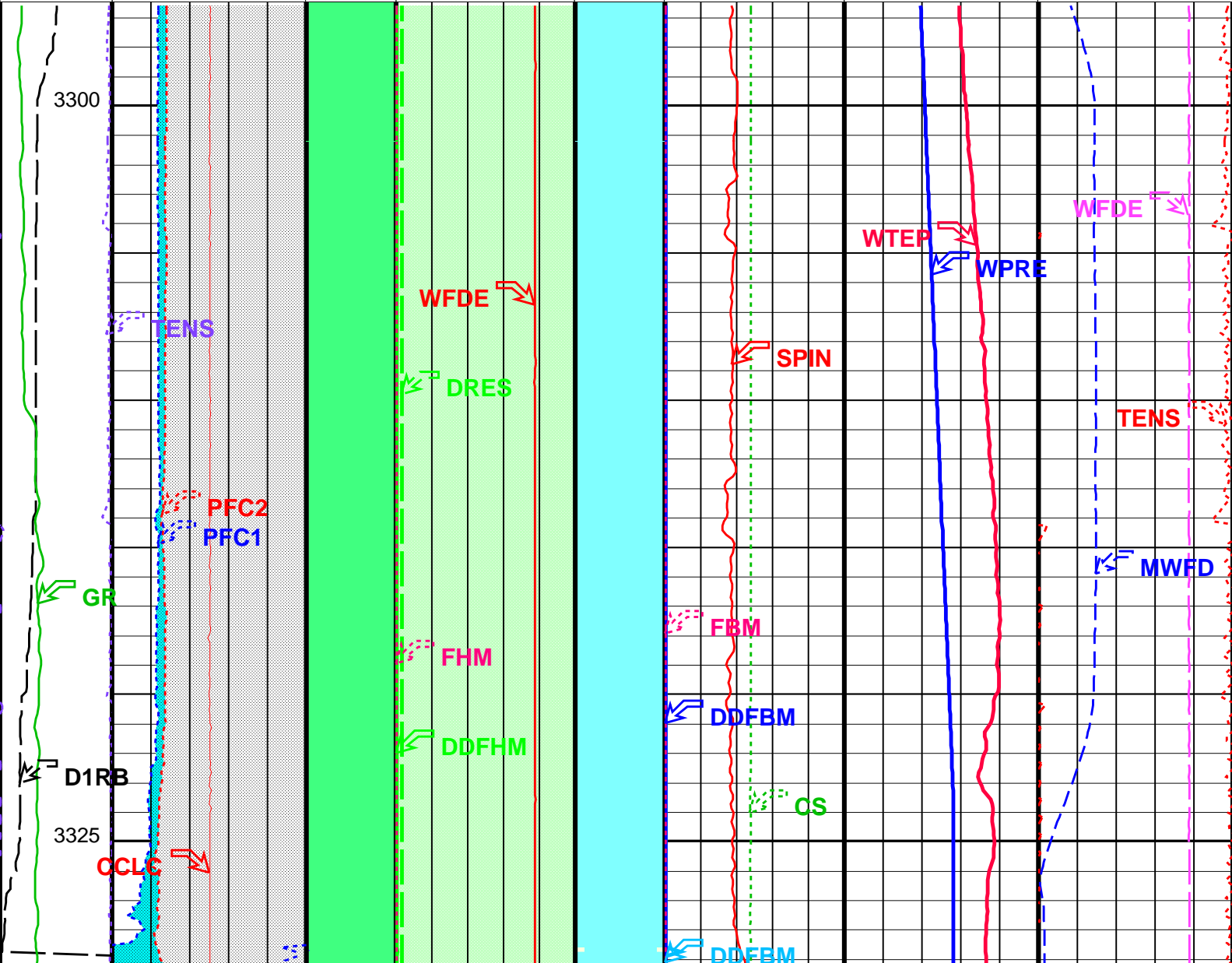
0 (CPS) 500

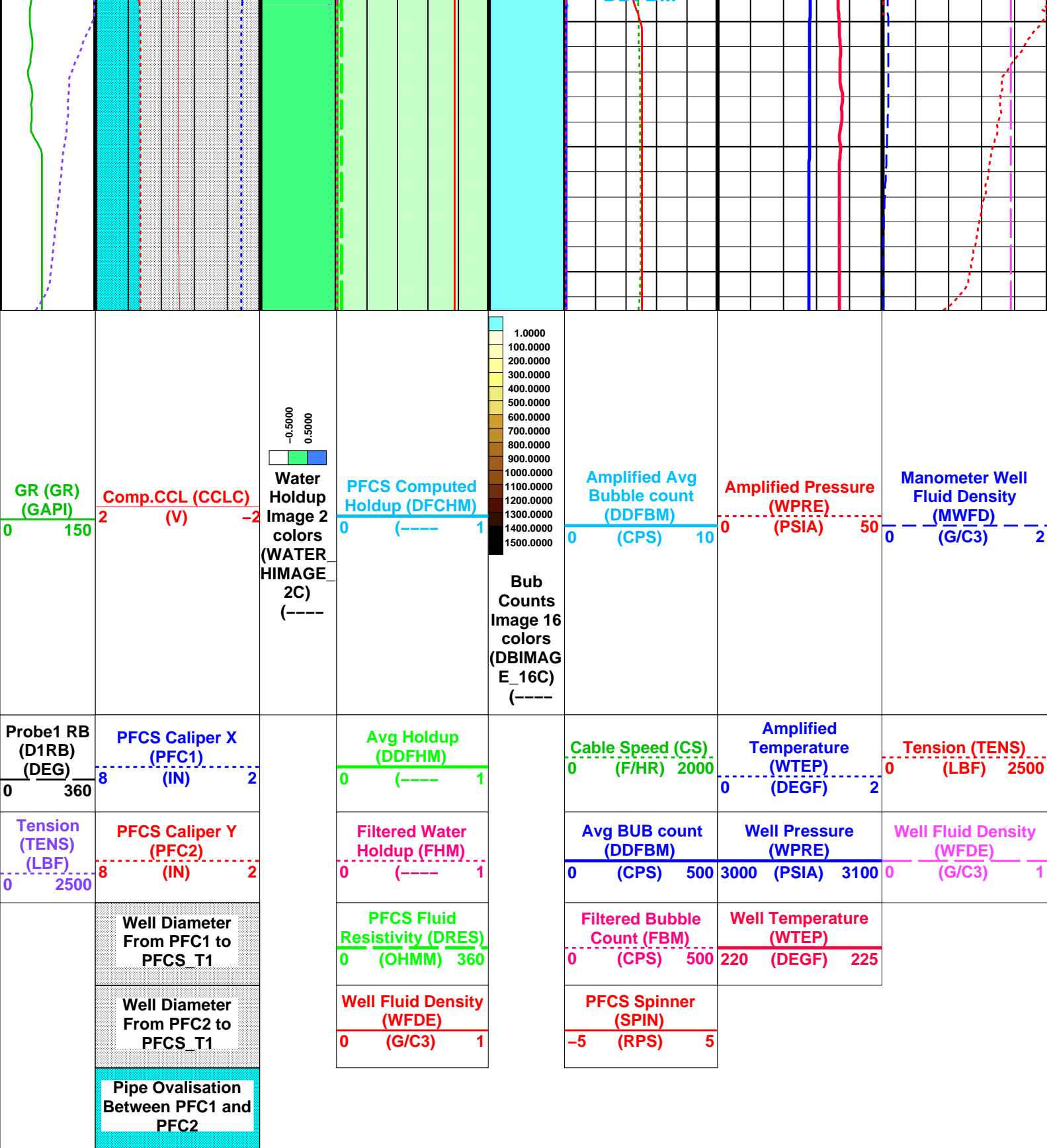
Well Temperature (WTEP)

220 (DEGF) 225

| | | | | | |
|--|--|---|--|--|---|
| Tension (TENS) (LBF) 0 2500 | PFC2 Caliper Y (PFC2) (IN) 8 2 | Filtered Water Holdup (FHM) 0 1 | Avg BUB count (DDFBM) (CPS) 500 | Well Pressure (WPRE) 3000 (PSIA) 3100 | Well Fluid Density (WFDE) (G/C3) 1 |
| Probe1 RB (D1RB) (DEG) 0 360 | PFC1 Caliper X (PFC1) (IN) 8 2 | Avg Holdup (DDFHM) 0 1 | Cable Speed (CS) (F/HR) 2000 | Amplified Temperature (WTEP) (DEGF) 2 | Tension (TENS) (LBF) 2500 |

| | | | | | | |
|--|--|---|--|--|--|---|
| GR (GR) (GAPI) 0 150 | Comp.CCL (CCLC) (V) 2 -2 | Water Holdup Image 2 colors (WATERHIMAGE 2C) (----) | PFC2 Computed Holdup (DFCHM) 0 1 | Amplified Avg Bubble count (DDFBM) (CPS) 10 | Amplified Pressure (WPRE) (PSIA) 50 | Manometer Well Fluid Density (MWFD) (G/C3) 2 |
| <div> <div> <div>1.0000</div> <div>100.0000</div> <div>200.0000</div> <div>300.0000</div> <div>400.0000</div> <div>500.0000</div> <div>600.0000</div> <div>700.0000</div> <div>800.0000</div> <div>900.0000</div> <div>1000.0000</div> <div>1100.0000</div> <div>1200.0000</div> <div>1300.0000</div> <div>1400.0000</div> <div>1500.0000</div> </div> <div> <div>Bub Counts Image 16 colors (DBIMAG E_16C)</div> <div>(----</div> </div> </div> | | | | | | |





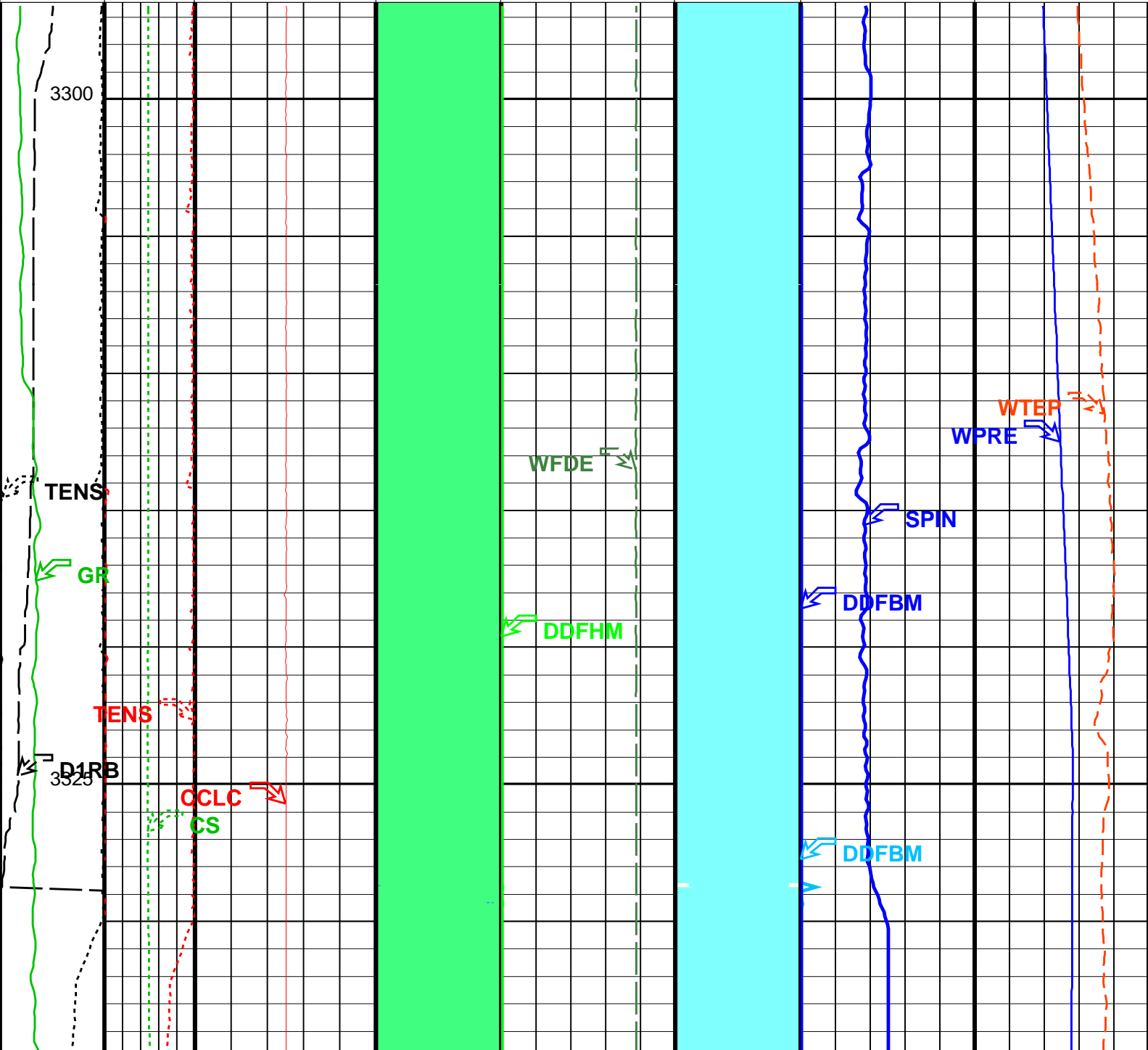
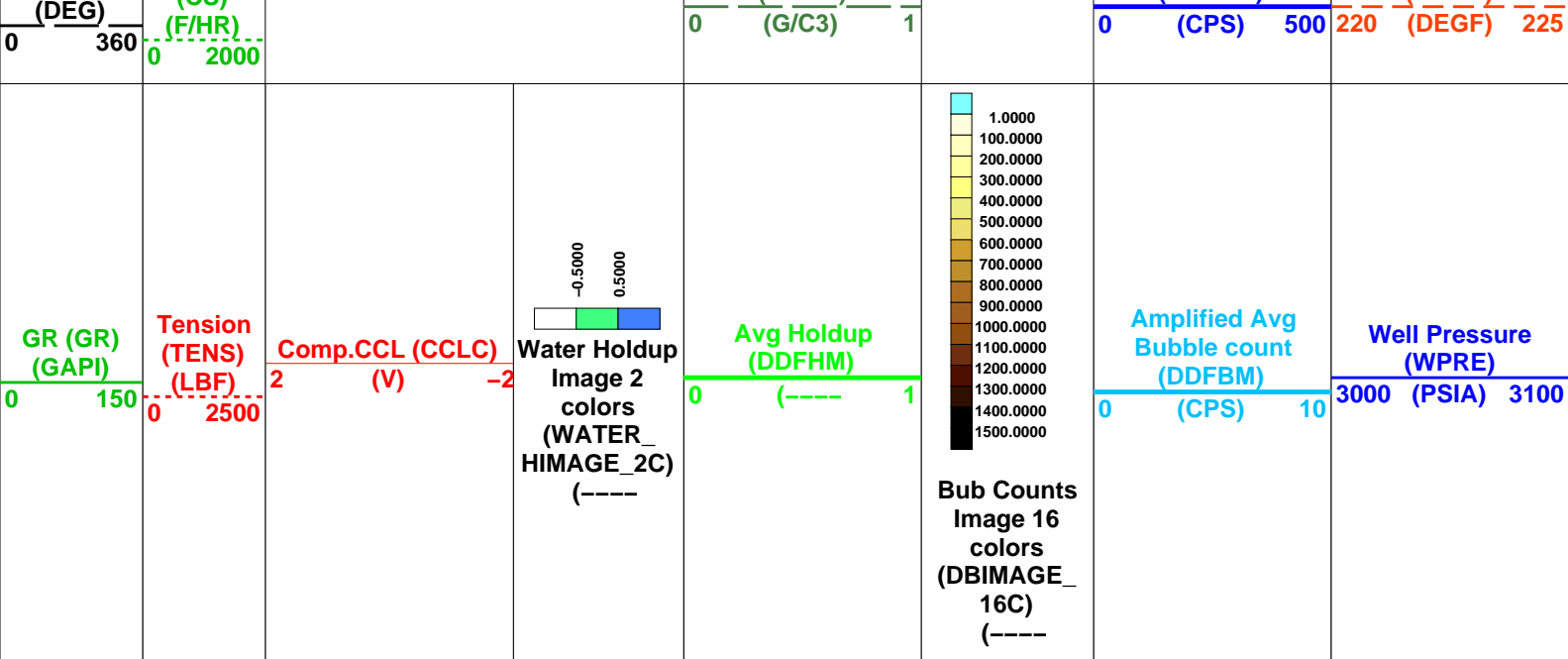
| Parameters | | |
|------------|-------------|-------|
| DLIS Name | Description | Value |

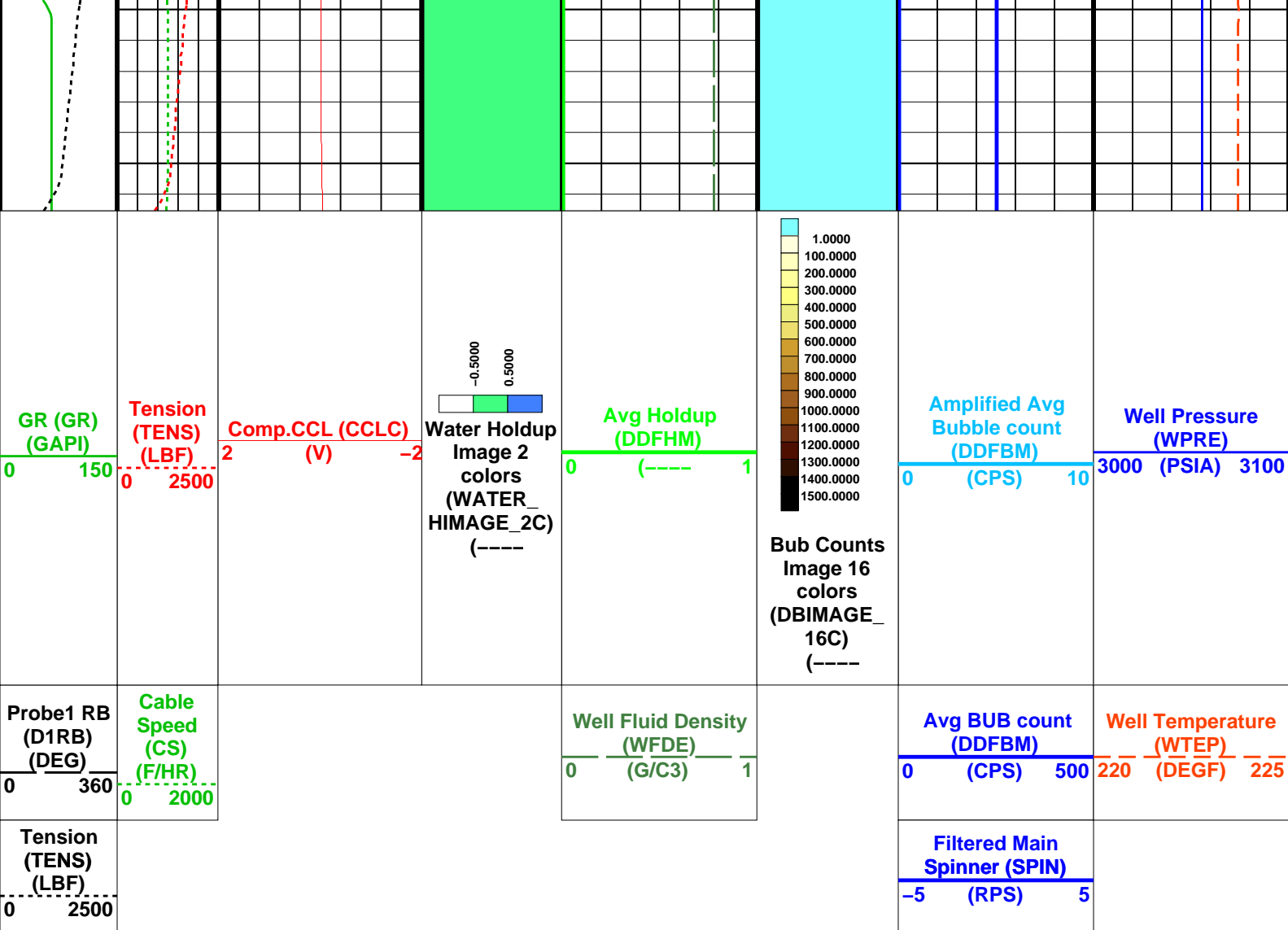
| | | | | | |
|---|------|--|----------------------|----------------|-------|
| PFCS–A: PSP Flow and caliper Tool | | Spinner Filter Averaging Mode | | LINEAR_AVERAGE | |
| AMOD | CSID | DDRC | DDRS | DFBD | DFFI |
| DFIR | DFPP | PFGC | PFRE1 | PFRE2 | PFRE3 |
| PFRE4 | SDCF | SPIN | DEFT–C2: DEFT_C Tool | | |
| Casing Size I.D. | | Dual DEFT DELTA RB COMPUTATION | | D1RB2–D1RB | |
| Dual DEFT RB Source | | DEFT Blank Disallowed Probes | | D1RB | |
| DEFT Flip Image | | DEFT Image Interpolation | | TOP_MIDDLE | |
| DEFT Image Rotation Selection | | Probes Arm Position | | C | |
| PFCS Geometrical coefficient | | Downhole Resistor Probe 1 | | 1200 | |
| Downhole Resistor Probe 2 | | Downhole Resistor Probe 3 | | 3000 | |
| Downhole Resistor Probe 4 | | Spinner Depth Constant Filter | | 3000 | |
| Main Spinner Flowmeter Sonde | | PFCS–A_3.5 | | 6 | |
| Casing Size I.D. | | Dual DEFT DELTA RB COMPUTATION | | D1RB2–D1RB | |
| Dual DEFT RB Source | | DEFT Blank Disallowed Probes | | D1RB | |
| DEFT Flip Image | | DEFT Image Interpolation | | TOP_MIDDLE | |
| DEFT Image Rotation Selection | | Probes Arm Position (2nd tool) | | D | |
| PFCS Geometrical coefficient | | PILS–A: PSP In Line Spinner Flowmeter | | 1200 | |
| Spinner Filter Averaging Mode | | Spinner Depth Constant Filter | | LINEAR_AVERAGE | |
| Main Spinner Flowmeter Sonde | | PGMC–A: PSP Gradiomanometer Measurement Module | | 6 | |
| Casing Size I.D. | | Gradio Surf.Cal Diff.Pres Gain | | PFCS–A_3.5 | |
| Gradio Surf.Cal Diff.Pres Offset | | Gradio Correction Density Shift | | 6.276 | |
| PSPT–B: Production Services Logging Platform | | Casing Size I.D. | | 1 | |
| Average Angular Deviation of Borehole from Normal | | BORDYN: BorDyn (Well Test Validation) | | 0 | |
| Casing Size I.D. | | System and Miscellaneous | | 0 | |
| Current Casing Size | | CSIZ | | 6.276 | |
| Depth Offset for Playback | | DO | | IN | |
| Playback Processing | | PP | | 3.6 | |
| | | | | NORMAL | |

| | | | | | | |
|-------------------|-------------------------|-------|----------|-------------------|----------|----------|
| Input DLIS Files | | | | | | |
| DEFAULT | FCS_DEFT_ILS_GMS_017LUP | FN:16 | PRODUCER | 23–Jun–2006 11:29 | 3337.9 M | 3292.3 M |
| Output DLIS Files | | | | | | |
| DEFAULT | FCS_DEFT_ILS_GMS_039PUP | FN:37 | PRODUCER | 23–Jun–2006 13:14 | | |

| | | | | | | |
|-----------------------------|-------------------------|---------|----------|-------------------|----------|----------|
| Input DLIS Files | | | | | | |
| DEFAULT | FCS_DEFT_ILS_GMS_017LUP | FN:16 | PRODUCER | 23–Jun–2006 11:29 | 3337.9 M | 3292.3 M |
| Output DLIS Files | | | | | | |
| DEFAULT | FCS_DEFT_ILS_GMS_039PUP | FN:37 | PRODUCER | 23–Jun–2006 13:14 | 3341.5 M | 3296.4 M |
| OP System Version: 14C0–302 | | | | | | |
| MCM | | | | | | |
| PFCS–A | 14C0–302 | DEFT–C2 | 14C0–302 | | | |
| PILS–A | 14C0–302 | PGMC–A | 14C0–302 | | | |
| PSPT–B | 14C0–302 | | | | | |

| | | | | | |
|----------------------|------------------|---------------------------|-----------------------|------------------------------|--|
| Tension (TENS) (LBF) | | | | Filtered Main Spinner (SPIN) | |
| 0 2500 | | | | –5 (RPS) 5 | |
| Probe1 RB (D1RB) | Cable Speed (CS) | Well Fluid Density (WFDE) | Avg BUB count (DDFBM) | Well Temperature (WTEP) | |





Format: DEFT_Image_DL Vertical Scale: 1:200 Graphics File Created: 23-Jun-2006 13:14

OP System Version: 14C0-302

MCM

| | | | |
|--------|----------|---------|----------|
| PFCS-A | 14C0-302 | DEFT-C2 | 14C0-302 |
| PILS-A | 14C0-302 | PGMC-A | 14C0-302 |
| PSPT-B | 14C0-302 | | |

Parameters

| DLIS Name | Description | Value |
|-----------|-------------|-------|
|-----------|-------------|-------|

PFCS-A: PSP Flow and caliper Tool

| | | |
|-------|--------------------------------|----------------|
| AMOD | Spinner Filter Averaging Mode | LINEAR_AVERAGE |
| CSID | Casing Size I.D. | 6.276 IN |
| DDRC | Dual DEFT DELTA RB COMPUTATION | D1RB2-D1RB |
| DDRS | Dual DEFT RB Source | D1RB |
| DFBD | DEFT Blank Disallowed Probes | NO |
| DDFI | DEFT Flip Image | NO |
| DFII | DEFT Image Interpolation | YES |
| DFIRS | DEFT Image Rotation Selection | TOP_MIDDLE |
| DFPP | Probes Arm Position | C |
| SDCF | Spinner Depth Constant Filter | 6 |
| SPIN | Main Spinner Flowmeter Sonde | PFCS-A_3.5 |

DEFT-C2: DEFT_C Tool

| | | |
|-------|--------------------------------|------------|
| CSID | Casing Size I.D. | 6.276 IN |
| DDRC | Dual DEFT DELTA RB COMPUTATION | D1RB2-D1RB |
| DDRS | Dual DEFT RB Source | D1RB |
| DFBD | DEFT Blank Disallowed Probes | NO |
| DDFI | DEFT Flip Image | NO |
| DFII | DEFT Image Interpolation | YES |
| DFIRS | DEFT Image Rotation Selection | TOP_MIDDLE |

PILS-A: PSP In Line Spinner Flowmeter

| | | |
|------|-------------------------------|----------------|
| AMOD | Spinner Filter Averaging Mode | LINEAR_AVERAGE |
| SDCF | Spinner Depth Constant Filter | 6 |

| | | | |
|------|---|------------|------|
| SPIN | PGMC-A: PSP Gradiomanometer Measurement Module | PFCS-A_3.5 | |
| CSID | Casing Size I.D. | 6.276 | IN |
| GCPG | Gradio Surf.Cal Diff.Pres Gain | 1 | |
| GCPO | Gradio Surf.Cal Diff.Pres Offset | 0 | KPAA |
| PDSH | Gradio Correction Density Shift | 0 | G/C3 |
| | PSPT-B: Production Services Logging Platform | | |
| CSID | Casing Size I.D. | 6.276 | IN |
| GDEV | Average Angular Deviation of Borehole from Normal | 40 | DEG |
| | BORDYN: BorDyn (Well Test Validation) | | |
| CSID | Casing Size I.D. | 6.276 | IN |
| | System and Miscellaneous | | |
| DO | Depth Offset for Playback | 3.6 | M |
| PP | Playback Processing | NORMAL | |

Input DLIS Files

DEFAULT FCS_DEFT_ILS_GMS_017LUP FN:16 PRODUCER 23-Jun-2006 11:29 3337.9 M 3292.3 M

Output DLIS Files

DEFAULT FCS_DEFT_ILS_GMS_039PUP FN:37 PRODUCER 23-Jun-2006 13:14



Baseline Down Pass
10 M/Min

MAXIS Field Log

Input DLIS Files

DEFAULT Flip_FCS_DEFT_ILS_035LUP PRODUCER 23-Jun-2006 12:57 3338.0 M 3275.1 M

Output DLIS Files

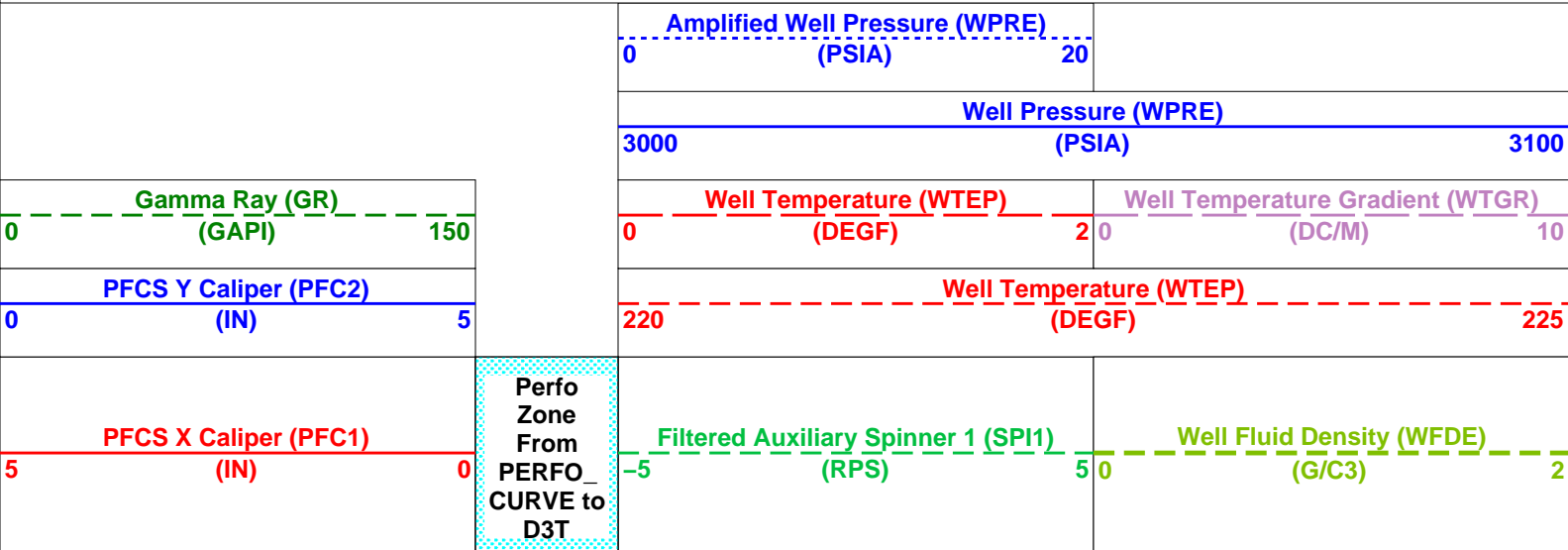
DEFAULT FCS_DEFT_ILS_GMS_038PUP FN:36 PRODUCER 23-Jun-2006 13:12 3338.5 M 3276.0 M

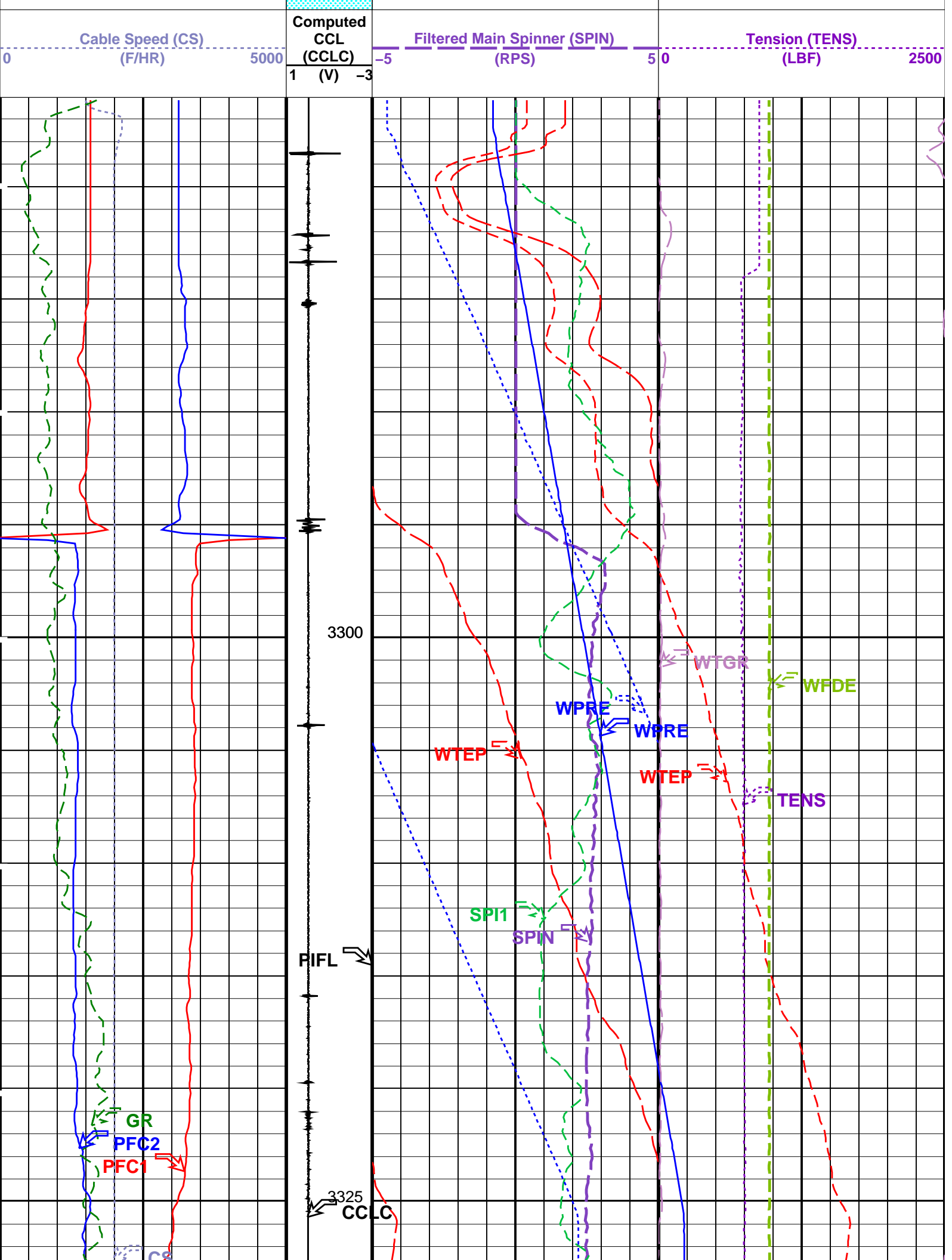
OP System Version: 14C0-302
MCM

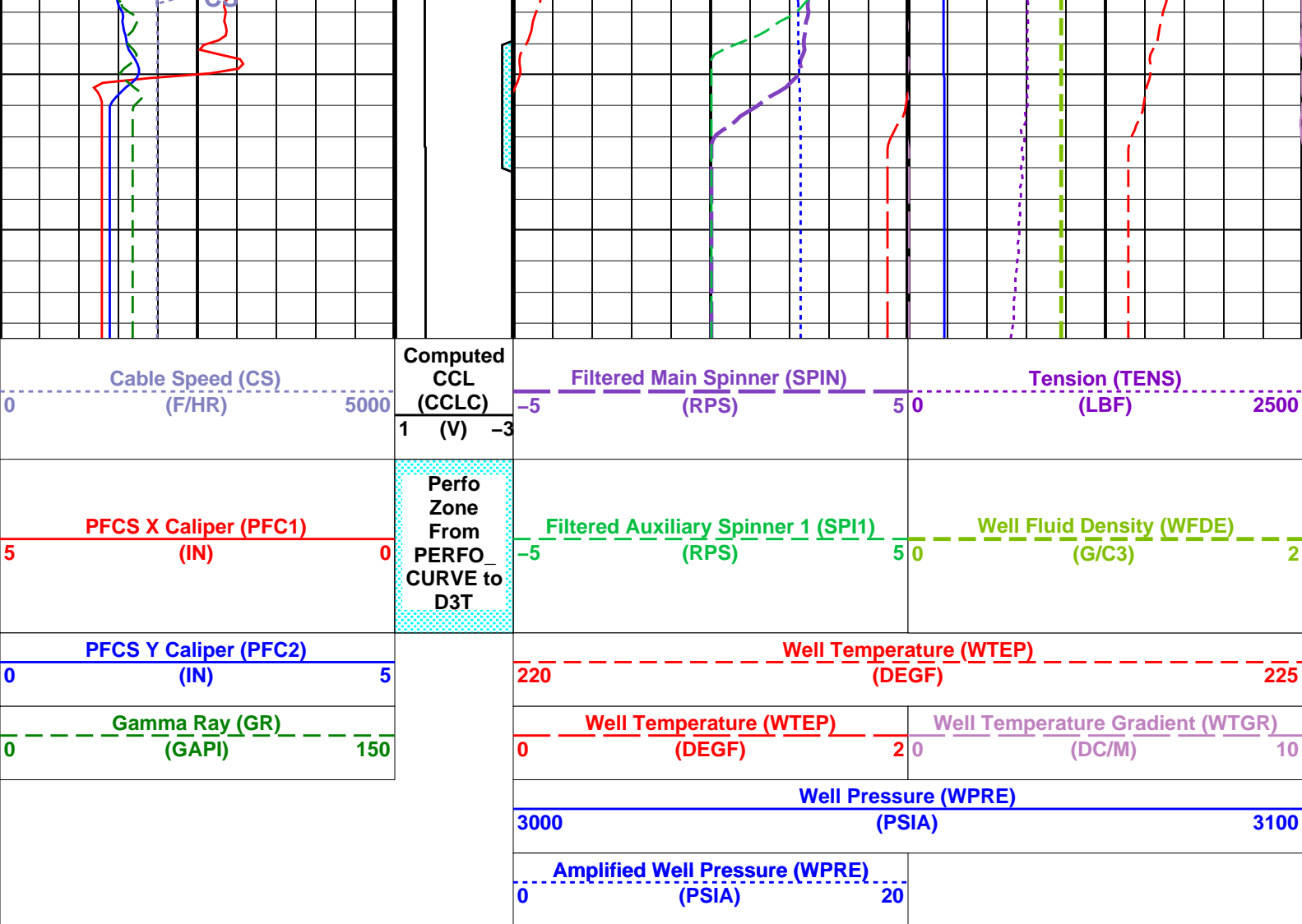
| | | | |
|--------|----------|---------|----------|
| PFCS-A | 14C0-302 | DEFT-C2 | 14C0-302 |
| PILS-A | 14C0-302 | PGMC-A | 14C0-302 |
| PSPT-B | 14C0-302 | | |

PIP SUMMARY

Time Mark Every 60 S







PIP SUMMARY

Time Mark Every 60 S

Format: PSP_1 Vertical Scale: 1:200 Graphics File Created: 23-Jun-2006 13:12

OP System Version: 14C0-302

MCM

| | | | |
|--------|----------|---------|----------|
| PFCS-A | 14C0-302 | DEFT-C2 | 14C0-302 |
| PILS-A | 14C0-302 | PGMC-A | 14C0-302 |
| PSPT-B | 14C0-302 | | |

| Parameters | | | |
|--|---|----------------|------|
| DLIS Name | Description | Value | |
| PFCS-A: PSP Flow and caliper Tool | | | |
| AMOD | Spinner Filter Averaging Mode | LINEAR_AVERAGE | |
| SDCF | Spinner Depth Constant Filter | 6 | |
| SPI1 | Auxiliary Spinner 1 Flowmeter Sonde | PILS-A | |
| SPIN | Main Spinner Flowmeter Sonde | PFCS-A_3.5 | |
| PILS-A: PSP In Line Spinner Flowmeter | | | |
| AMOD | Spinner Filter Averaging Mode | LINEAR_AVERAGE | |
| SDCF | Spinner Depth Constant Filter | 6 | |
| SPI1 | Auxiliary Spinner 1 Flowmeter Sonde | PILS-A | |
| SPIN | Main Spinner Flowmeter Sonde | PFCS-A_3.5 | |
| PGMC-A: PSP Gradiomanometer Measurement Module | | | |
| GCPG | Gradio Surf.Cal Diff.Pres Gain | 1 | |
| GCPO | Gradio Surf.Cal Diff.Pres Offset | 0 | KPAA |
| PDSH | Gradio Correction Density Shift | 0 | G/C3 |
| PSPT-B: Production Services Logging Platform | | | |
| GDEV | Average Angular Deviation of Borehole from Normal | 40 | DEG |
| System and Miscellaneous | | | |
| DO | Depth Offset for Playback | 0.4 | M |
| PP | Playback Processing | NORMAL | |

Input DLIS Files

Input DLIS Files

DEFAULT Flip_FCS_DEFT_ILS_035LUP PRODUCER 23-Jun-2006 12:57 3338.0 M 3275.1 M

Output DLIS Files

DEFAULT FCS_DEFT_ILS_GMS_038PUP FN:36 PRODUCER 23-Jun-2006 13:12

Input DLIS Files

DEFAULT Flip_FCS_DEFT_ILS_035LUP PRODUCER 23-Jun-2006 12:57 3338.0 M 3275.1 M

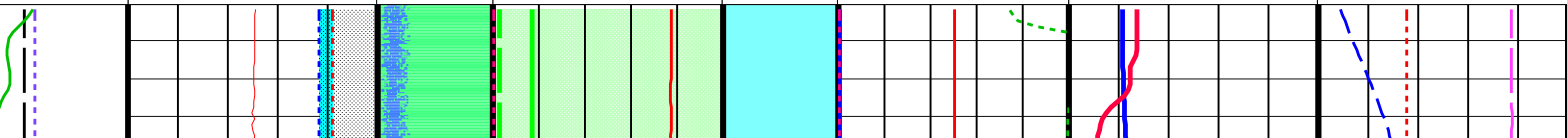
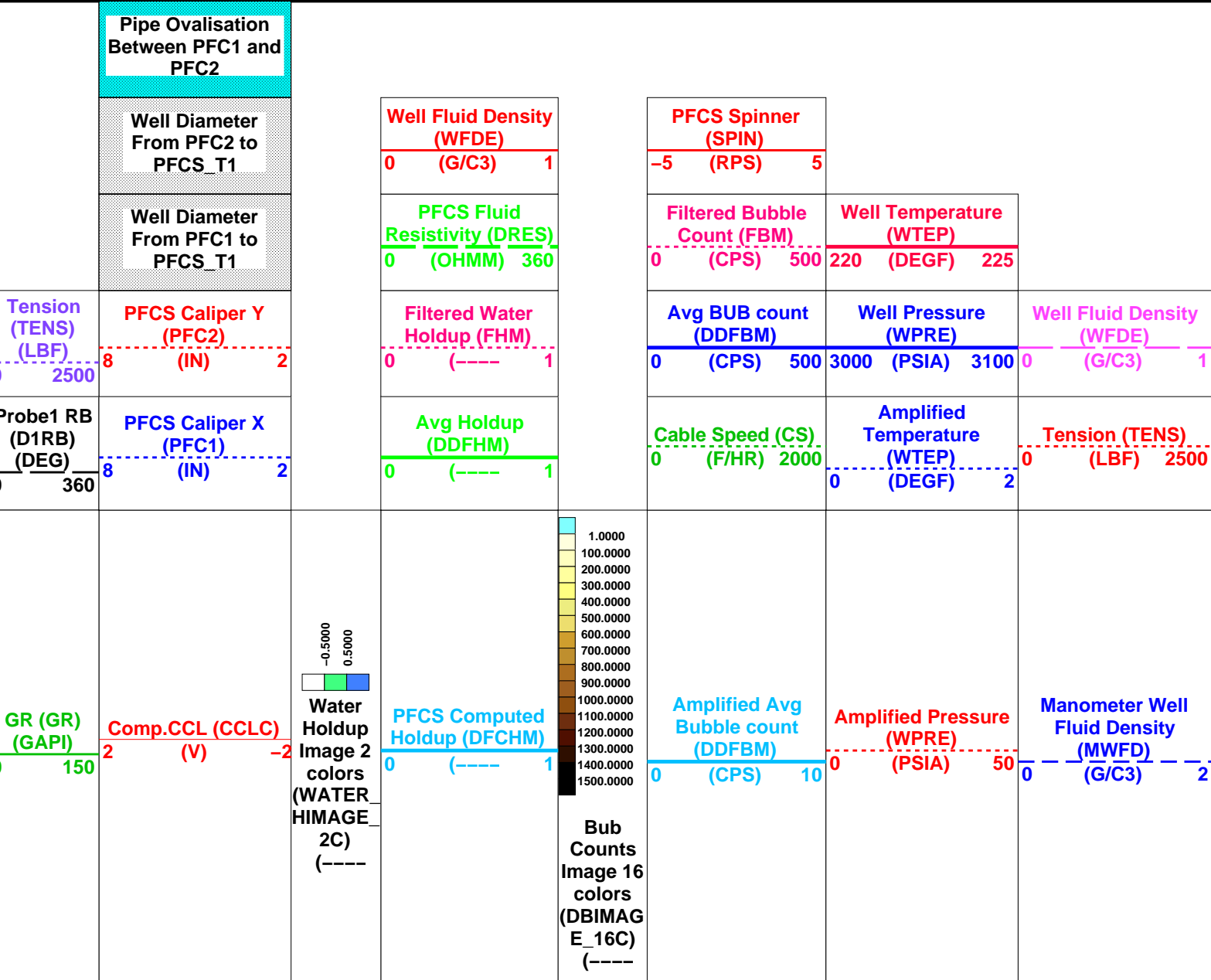
Output DLIS Files

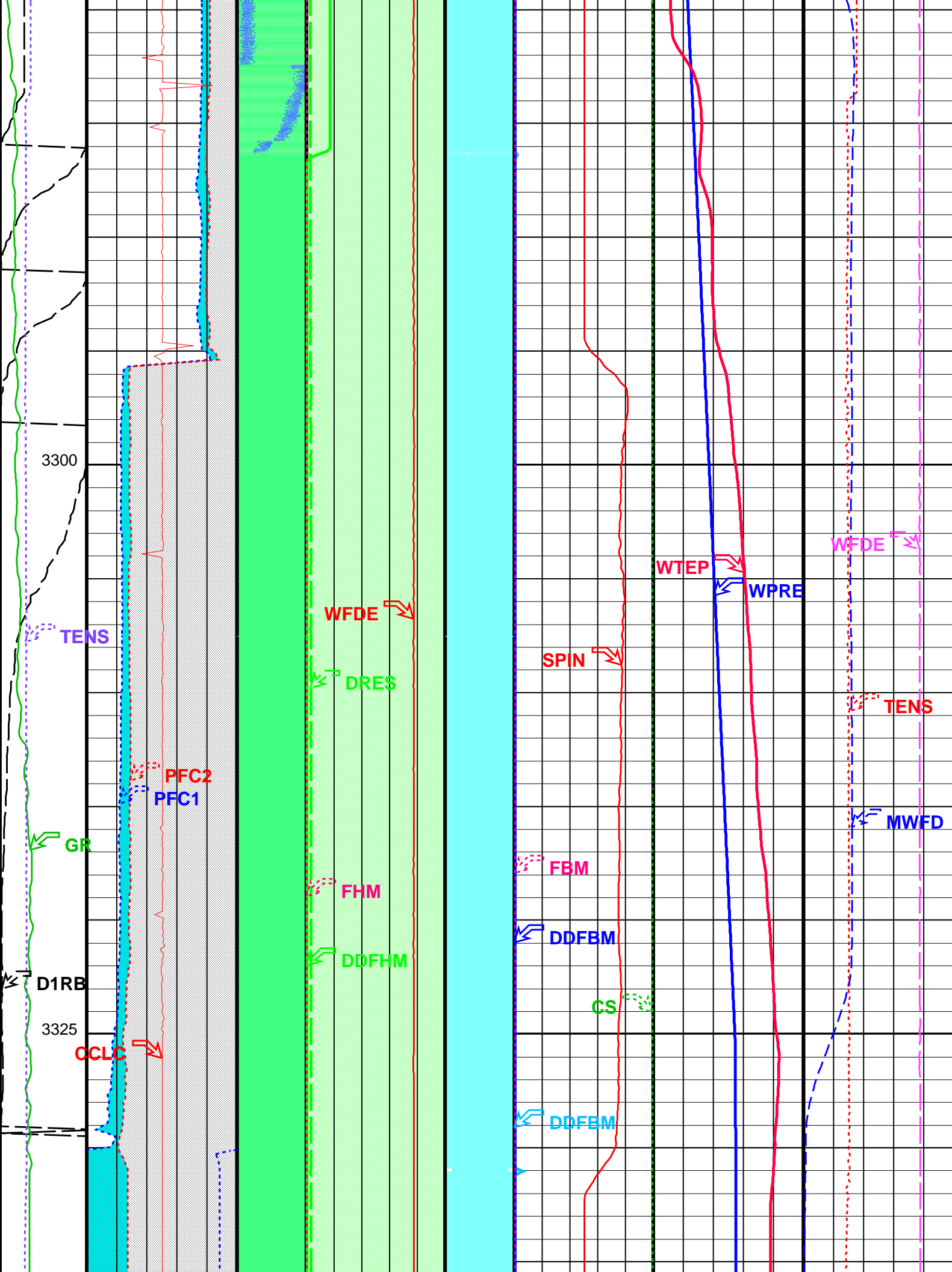
DEFAULT FCS_DEFT_ILS_GMS_038PUP FN:36 PRODUCER 23-Jun-2006 13:12 3338.5 M 3276.0 M

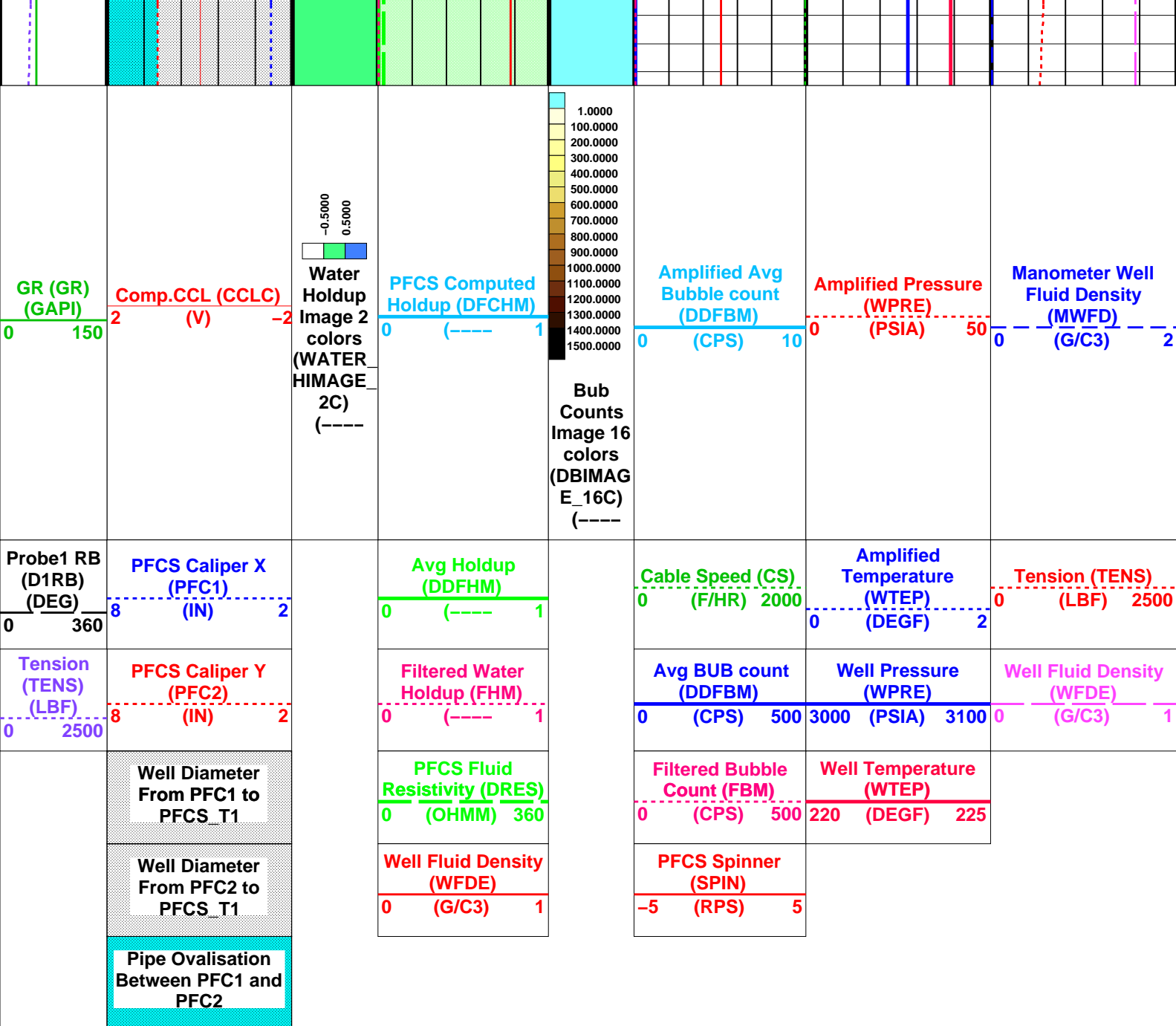
OP System Version: 14C0-302

MCM

PFCS-A 14C0-302 DEFT-C2 14C0-302
 PILS-A 14C0-302 PGM-C-A 14C0-302
 PSPT-B 14C0-302







Format: PFCS_Image_DL Vertical Scale: 1:200 Graphics File Created: 23-Jun-2006 13:12

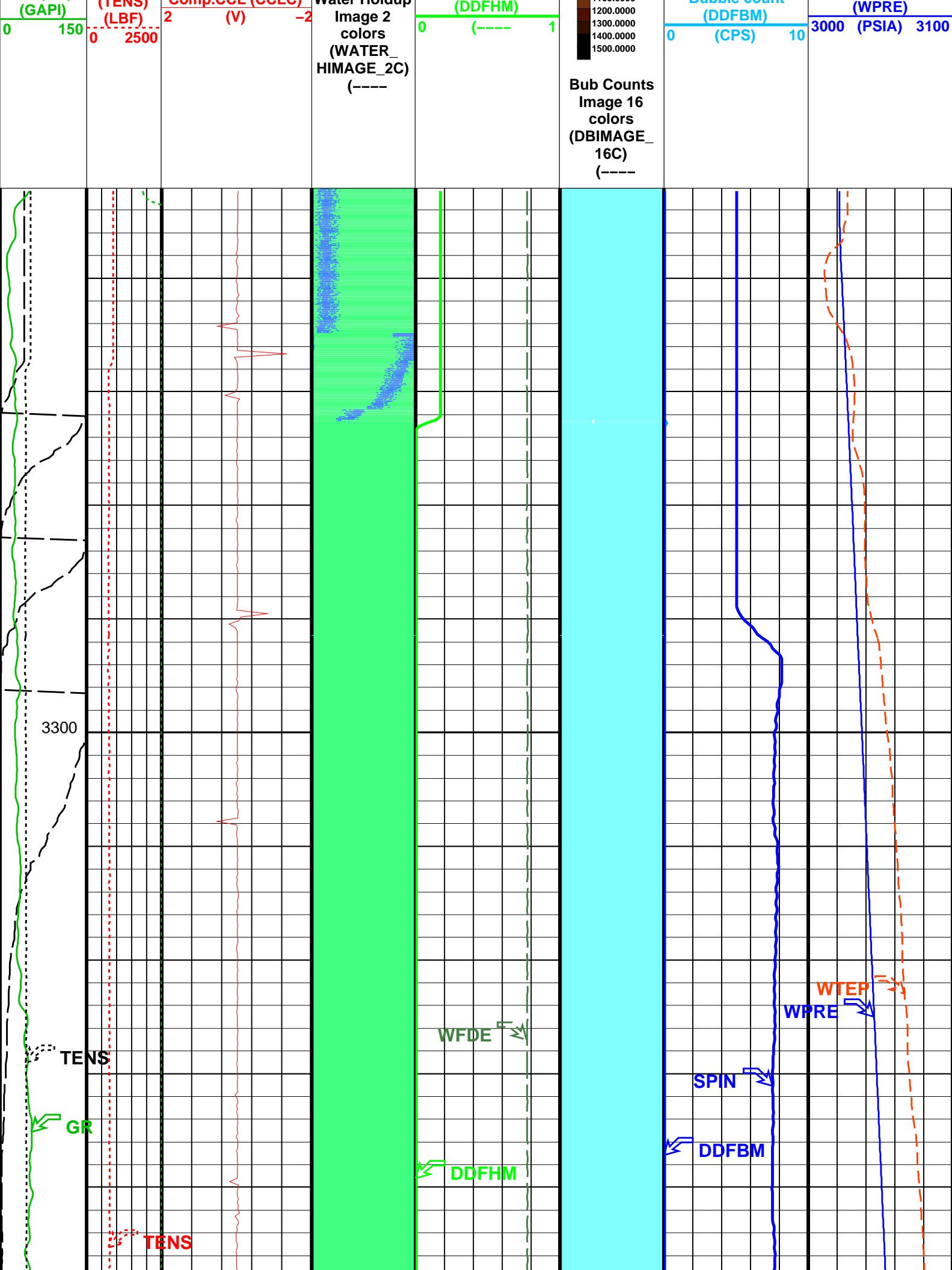
OP System Version: 14C0-302

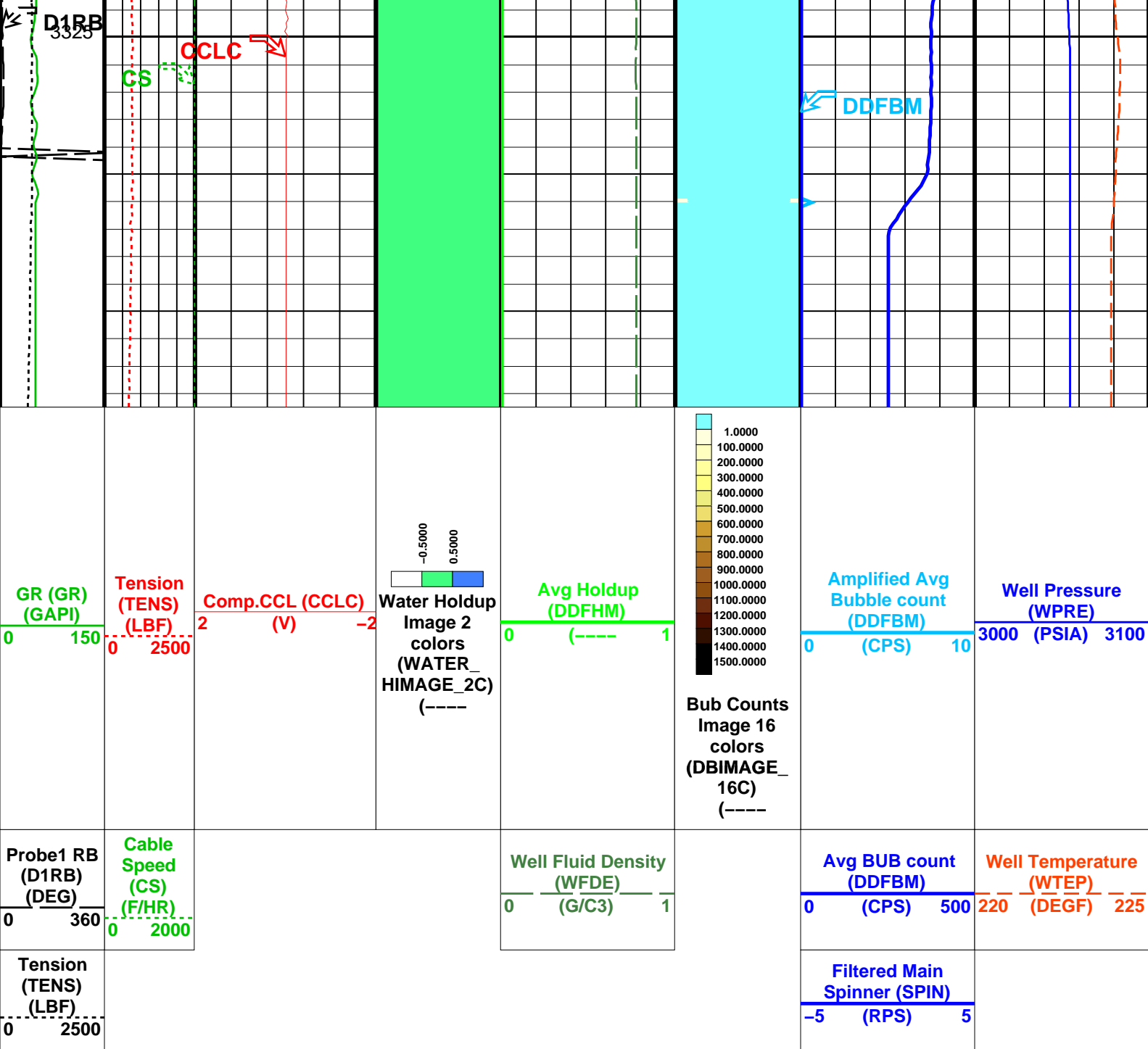
MCM

| | | | |
|--------|----------|---------|----------|
| PFCS-A | 14C0-302 | DEFT-C2 | 14C0-302 |
| PILS-A | 14C0-302 | PGMC-A | 14C0-302 |
| PSPT-B | 14C0-302 | | |

Parameters

| DLIS Name | Description | Value |
|-----------------------------------|--------------------------------|----------------|
| PFCS-A: PSP Flow and caliper Tool | | |
| AMOD | Spinner Filter Averaging Mode | LINEAR_AVERAGE |
| CSID | Casing Size I.D. | 6.276 IN |
| DDRC | Dual DEFT DELTA RB COMPUTATION | D1RB2-D1RB |
| DDRS | Dual DEFT RB Source | D1RB |
| DFBD | DEFT Blank Disallowed Probes | NO |
| DFFI | DEFT Flip Image | NO |
| DFII | DEFT Image Interpolation | YES |
| DFIRS | DEFT Image Rotation Selection | TOP_MIDDLE |
| DFPP | Probes Arm Position | C |
| PFGC | PFCS Geometrical coefficient | 1200 |
| PFRE1 | Downhole Resistor Probe 1 | 3000 OHMS |
| PFRE2 | Downhole Resistor Probe 2 | 3000 OHMS |
| PFRE3 | Downhole Resistor Probe 3 | 3000 OHMS |





Format: DEFT_Image_DL Vertical Scale: 1:200 Graphics File Created: 23-Jun-2006 13:12

| | | | |
|-----------------------------|----------|---------|----------|
| OP System Version: 14C0-302 | | | |
| MCM | | | |
| PFCS-A | 14C0-302 | DEFT-C2 | 14C0-302 |
| PILS-A | 14C0-302 | PGMC-A | 14C0-302 |
| PSPT-B | 14C0-302 | | |

| Parameters | | |
|------------|-----------------------------------|----------------|
| DLIS Name | Description | Value |
| AMOD | PFCS-A: PSP Flow and caliper Tool | |
| CSID | Spinner Filter Averaging Mode | LINEAR_AVERAGE |
| DDRC | Casing Size I.D. | 6.276 IN |
| DDRS | Dual DEFT DELTA RB COMPUTATION | D1RB2-D1RB |
| DFBD | Dual DEFT RB Source | D1RB |
| DFFI | DEFT Blank Disallowed Probes | NO |
| DFII | DEFT Flip Image | NO |
| DFIRS | DEFT Image Interpolation | YES |
| DFPP | DEFT Image Rotation Selection | TOP_MIDDLE |
| SDCF | Probes Arm Position | C |
| | Spinner Depth Constant Filter | 6 |

| | | | |
|--|---|----------------|------|
| SPIN | Main Spinner Flowmeter Sonde | PFCS-A_3.5 | |
| DEFT-C2: DEFT_C Tool | | | |
| CSID | Casing Size I.D. | 6.276 | IN |
| DDRC | Dual DEFT DELTA RB COMPUTATION | D1RB2-D1RB | |
| DDRS | Dual DEFT RB Source | D1RB | |
| DFBD | DEFT Blank Disallowed Probes | NO | |
| DFFI | DEFT Flip Image | NO | |
| DFII | DEFT Image Interpolation | YES | |
| DFIRS | DEFT Image Rotation Selection | TOP_MIDDLE | |
| PILS-A: PSP In Line | Spinner Flowmeter | | |
| AMOD | Spinner Filter Averaging Mode | LINEAR_AVERAGE | |
| SDCF | Spinner Depth Constant Filter | 6 | |
| SPIN | Main Spinner Flowmeter Sonde | PFCS-A_3.5 | |
| PGMC-A: PSP Gradiomanometer Measurement Module | | | |
| CSID | Casing Size I.D. | 6.276 | IN |
| GCPG | Gradio Surf.Cal Diff.Pres Gain | 1 | |
| GCPO | Gradio Surf.Cal Diff.Pres Offset | 0 | KPAA |
| PDSH | Gradio Correction Density Shift | 0 | G/C3 |
| PSPT-B: Production Services Logging Platform | | | |
| CSID | Casing Size I.D. | 6.276 | IN |
| GDEV | Average Angular Deviation of Borehole from Normal | 40 | DEG |
| BORDYN: BorDyn (Well Test Validation) | | | |
| CSID | Casing Size I.D. | 6.276 | IN |
| System and Miscellaneous | | | |
| DO | Depth Offset for Playback | 0.4 | M |
| PP | Playback Processing | NORMAL | |

Input DLIS Files

| | | | | | |
|---------|--------------------------|----------|-------------------|----------|----------|
| DEFAULT | Flip_FCS_DEFT_ILS_035LUP | PRODUCER | 23-Jun-2006 12:57 | 3338.0 M | 3275.1 M |
|---------|--------------------------|----------|-------------------|----------|----------|

Output DLIS Files

| | | | | | |
|---------|-------------------------|-------|----------|-------------------|--|
| DEFAULT | FCS_DEFT_ILS_GMS_038PUP | FN:36 | PRODUCER | 23-Jun-2006 13:12 | |
|---------|-------------------------|-------|----------|-------------------|--|





Calibration Listing

MAXIS Field Log

| Calibration and Check Summary | | | | | | | |
|--|---------|--------|--------|-------|--------|-------|-------|
| Measurement | Nominal | Master | Before | After | Change | Limit | Units |
| PSP Flow and caliper Tool Wellsite Calibration – PFCS Caliper Calibration | | | | | | | |
| Before: 21-Jun-2006 13:57 | | | | | | | |
| PFCS CaliperX Small Ring | 5.500 | N/A | 5.042 | N/A | N/A | N/A | IN |
| PFCS CaliperX Large Ring | 8.000 | N/A | 7.656 | N/A | N/A | N/A | IN |
| PFCS CaliperY Small Ring | 5.500 | N/A | 5.270 | N/A | N/A | N/A | IN |
| PFCS CaliperY Large Ring | 8.000 | N/A | 7.845 | N/A | N/A | N/A | IN |
| DEFT_C Tool Wellsite Calibration – DEFT_C2 Caliper Calibration | | | | | | | |
| Before: 21-Jun-2006 13:57 | | | | | | | |
| DEFT-C2 Caliper Small Ring | 5.500 | N/A | 5.615 | N/A | N/A | N/A | IN |
| DEFT-C2 Caliper Large Ring | 8.000 | N/A | 7.955 | N/A | N/A | N/A | IN |
| Production Services Logging Platform Wellsite Calibration – Detector Calibration | | | | | | | |
| Before: 21-Jun-2006 14:00 | | | | | | | |
| Gamma-Ray Jig-Bkg | 125.0 | N/A | 131.7 | N/A | N/A | N/A | GAPI |

PSP Flow and caliper Tool / Equipment Identification

Primary Equipment:

| Production Services Logging Platform Wellsite Calibration | | | | | | | | | |
|---|---|--------------------|--------------------|-------|--------|---|--------------------|--------------------|-------|
| Detector Calibration | | | | | | | | | |
| Phase | Gamma-Ray Background | | GAPI | Value | Phase | Gamma-Ray Jig-Bkg | | GAPI | Value |
| Before |  | | | 3.037 | Before |  | | | 131.7 |
| | 0 (Minimum) | 30.00 (Nominal) | 120.0 (Maximum) | | | 110.0 (Minimum) | 125.0 (Nominal) | 140.0 (Maximum) | |
| Before: 21-Jun-2006 14:00 | | | | | | | | | |

| | | |
|----------|----------------------|--------------|
| Company: | Esso Australia Ltd. | Schlumberger |
| Well: | A-34 | |
| Field: | Fortescue | |
| Rig: | Prod4/Crane | |
| Country: | Australia | |
| | Spinner-GR-Pressure | |
| | Dual Deft-Gradio-CCL | |
| | Temp-Survey | |