

[illegible]

Company: Esso Australia Pty Ltd.

Well: A-4B

Field: Flounder

Rig: Prod 4 / Crane

Country: Australia

:g Field: Flounder Location: Gippsland Well: A-4B Company: Esso Australia Pty Ltd.		7 5/8" MPBT Plug 2 1/8" Mwpt Powerjet Perforation				
					LOCATION	
					Gippsland Basin Bass Strait	Elev.: K.B. 34 m G.L. -94 m D.F. 34 m
					Permanent Datum: M.S.L. Log Measured From: D.F.	Elev.: 0 m 34.0 m above Perm. Datum
					Drilling Measured From: D.F.	
Logging Date	State: Victoria	Max. Well Deviation 32 deg	Longitude 148°06'15.1"E	Latitude 038°18'45.2"S		
Run Number	16-Oct-2007	1 thru 5				
Depth Driller	2660 m					
Schlumberger Depth	2660 m					
Bottom Log Interval	2673 m					
Top Log Interval	2125 m					
Casing Fluid Type	Production Fluids					
Salinity						
Density						
Fluid Level	1341 m					
BIT/CASING/TUBING STRING						
Bit Size	9.875 in					
From						
To						
Casing/Tubing Size	7.625 in					
Weight	29.7 lbm/ft					
Grade	L-80					
From	19.8 m					
To	2782 m					
Maximum Recorded Temperatures	231 degF					
Logger On Bottom	16-Oct-2007		11:30			
Unit Number	Location	889	Ausl / Prod4			
Recorded By	G Wright.					
Witnessed By	G Rimmer.					

Run 1				
PVT DATA				
CEMENTING DATA				
Expected Cement Top				
Logging Date				
Run Number				
Depth Driller				
Schlumberger Depth				
Bottom Log Interval				
Top Log Interval				
Casing Fluid Type				
Salinity				
Density				
Fluid Level				
BIT/CASING/TUBING STRING				
Bit Size				
From				
To				
Casing/Tubing Size				
Weight				
Grade				
From				
To				
Maximum Recorded Temperatures				
Logger On Bottom				
Unit Number				
Recorded By				
Witnessed By				

DEPTH SUMMARY LISTING

Date Created: 15-OCT-2007 11:41:57

Depth System Equipment

Depth Measuring Device	Tension Device	Logging Cable
Type: IDW-EB Serial Number: 6373 Calibration Date: 04-Jan-2007 Calibrator Serial Number: 9 Calibration Cable Type: 2-32ZT Wheel Correction 1: -2 Wheel Correction 2: -4	Type: PSDS/OSDS Serial Number: 325357 Calibration Date: 10-Oct-2007 Calibrator Serial Number: 1174 Calibration Gain: 0.89 Calibration Offset: 180.00	Type: 2-32ZT Serial Number: 24425 Length: 5584.85 M Conveyance Method: Wireline Rig Type: Rigless

Depth Control Parameters

Log Sequence:	Subsequent Trip To the Well
Reference Log Name:	Solar Log
Reference Log Run Number:	1
Reference Log Date:	
Subsequent Trip Down Log Correction:	

Depth Control Remarks

1. IDW-EB 6373 used as primary depth control.
2. Z-Chart used as back-up.

DISCLAIMER

THE USE OF AND RELIANCE UPON THIS RECORDED-DATA BY THE HEREIN NAMED COMPANY (AND ANY OF ITS AFFILIATES, PARTNERS, REPRESENTATIVES, AGENTS, CONSULTANTS AND EMPLOYEES) IS SUBJECT TO THE TERMS AND CONDITIONS AGREED UPON BETWEEN SCHLUMBERGER AND THE COMPANY, INCLUDING: (a) RESTRICTIONS ON USE OF THE RECORDED-DATA; (b) DISCLAIMERS AND WAIVERS OF WARRANTIES AND REPRESENTATIONS REGARDING COMPANY'S USE OF AND RELIANCE UPON THE RECORDED-DATA; AND (c) CUSTOMER'S FULL AND SOLE RESPONSIBILITY FOR ANY INFERENCE DRAWN OR DECISION MADE IN CONNECTION WITH THE USE OF THIS RECORDED-DATA.

OTHER SERVICES1
OS1: None
OS2:
OS3:
OS4:
OS5:
REMARKS: RUN NUMBER 1
Log correlated to Esso Solar composite supplied with program.
Maximum well deviation = 32 degree's at 2108m MDKB.
Run one was the Mpbt dummy plug run to 2673m MDKB.
Run two, 7 5/8" MPBT plug set at 2360m MDKB.
Runs 3 & 4 were water and cement dump runs on top of the plug.
Run 5, 2 1/8" Phased Powerjet gun at 6 spf, 45 degree phased
interval perforated was 2153.5m to 2156m MDKB.
SBHP = 2513 psia.

CCL	3.20
PBMS PSTC	2.97

2.97

SAH-G 1047
SAH-G 1047

AH-MPD-MB 268
AH-MPD-MB 268

AH-ESIC 31944
AH-ESIC 31944


MWP_GUN
GUN-2.5m Powerjet Gun 1

4.34

3.86

3.33

2.74

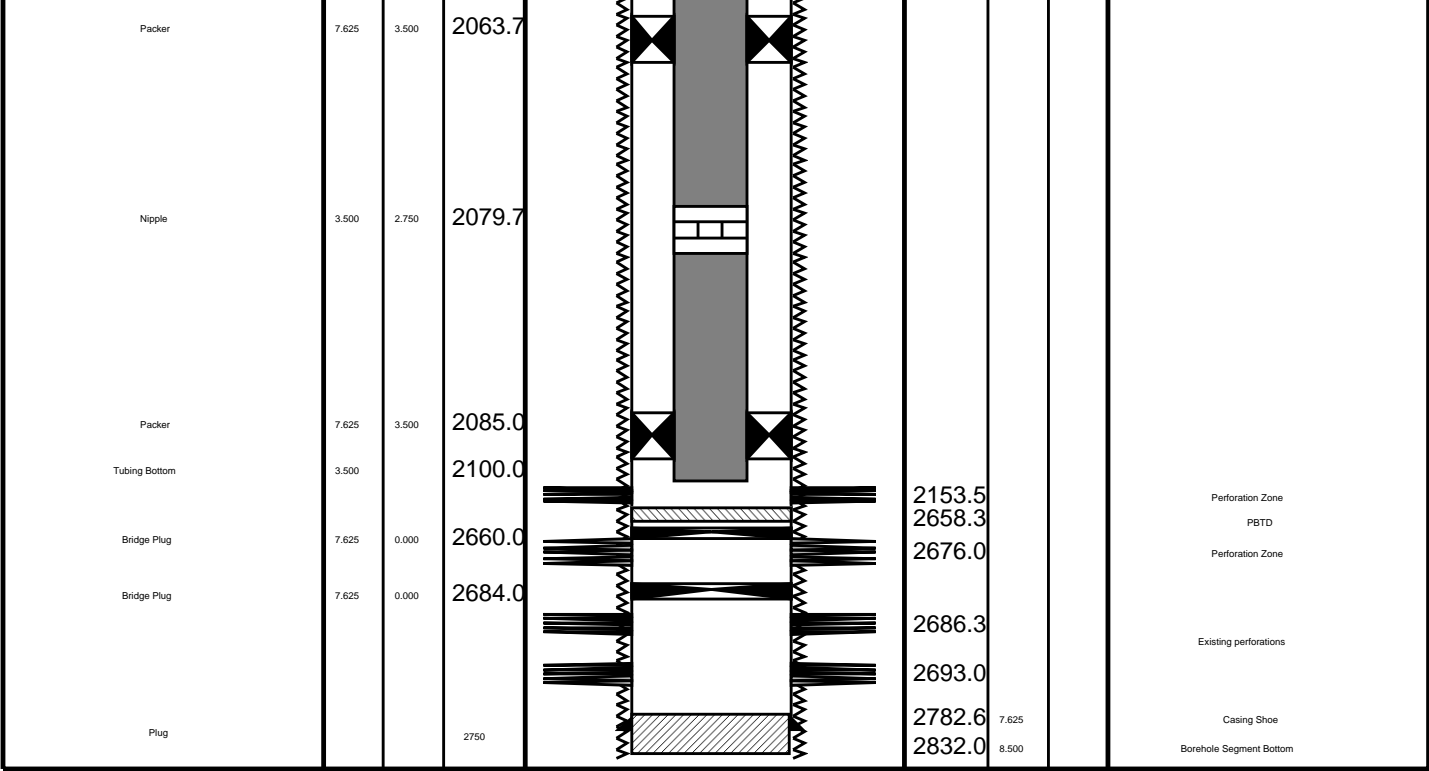
Tension HV  0.00
TOOL ZERO

MAXIMUM STRING DIAMETER 2.13 IN
MEASUREMENTS RELATIVE TO TOOL ZERO
ALL LENGTHS IN METERS

TOOL BOTTOM

MAXIMUM STRING DIAMETER 2.13 IN
MEASUREMENTS RELATIVE TO TOOL ZERO
ALL LENGTHS IN METERS

Production String	(in)		(m)	Well Schematic	(m)	(in)		Casing String
	OD	ID	MD		MD	OD	ID	
Tubing	3.500		19.4		19.8	13.625		Borehole Segment Casing String
SSSV			453.5		587.2	11.750		
Gas Lift Mandrel	5.968	2.920	627.1		587.2	8.500		
Gas Lift Mandrel	5.968	2.920	818.1		587.2	11.750	7.625	
Gas Lift Mandrel	5.680	2.920	1000.0			7.625		
Nipple	3.500	2.750	1016.1					
								Borehole Segment Bottom Borehole Segment Liner Hanger Casing String, 44.3 kg/m, L-80



Job Event Summary

MAXIS Field Log

Schlumberger Job Event Summary

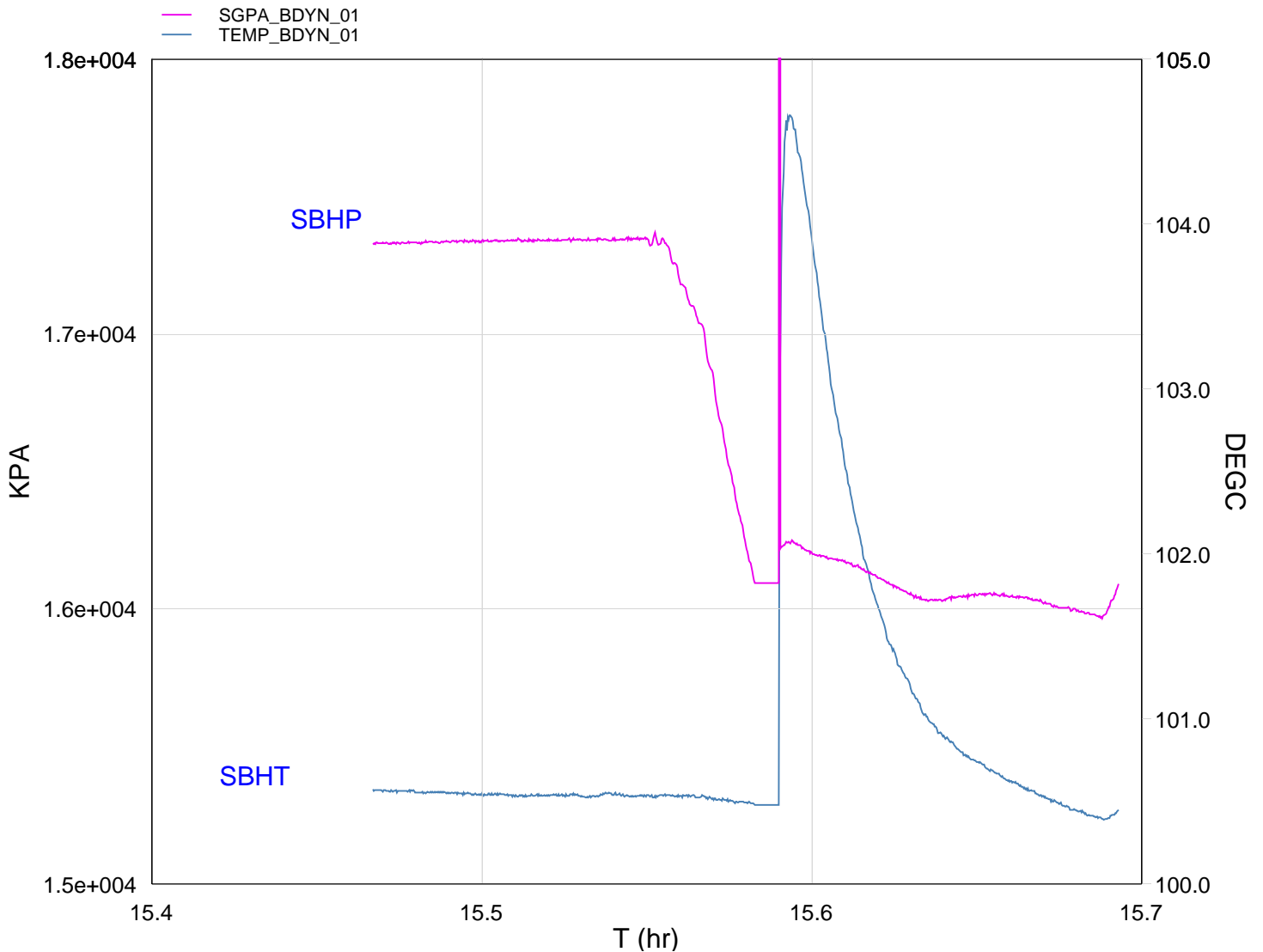
Time	Elapsed Time	Depth (M)	File
Simulated Log	15-Oct-2007 8:27	000:00	PSP_006LUP
Simulated Log	15-Oct-2007 8:27	000:06	PSP_007LUP
Simulated Log	15-Oct-2007 9:48	000:36	PSP_009LUP
Log Pass (down)	15-Oct-2007 10:26	001:27	-2.3 - 2671.7 PSP_010LDP
Log Pass (up)	15-Oct-2007 11:52	000:45	2677.8 - 2046.4 PSP_011LUP
Log Pass (up)	15-Oct-2007 12:55	000:09	547.3 - 3.2 PSP_013LUP
Simulated Log	15-Oct-2007 13:40	000:02	MPBT_015LUP
Log Pass (down)	15-Oct-2007 14:03	000:42	20.7 - 2665.2 MPBT_017LDP
Log Pass (up)	15-Oct-2007 14:44	000:02	2665.5 - 2622.1 MPBT_018LUP
Log Pass (up)	15-Oct-2007 14:47	000:02	2621.0 - 2569.2 MPBT_019LUP
Simulated Log	15-Oct-2007 14:57	000:36	MPBT_020LUP
Log Pass (up)	15-Oct-2007 15:38	000:04	2652.7 - 2598.3 MPBT_021LUP
Log Pass (up)	15-Oct-2007 16:02	000:06	845.1 - 362.3 MPBT_022LUP
Log Pass (up)	15-Oct-2007 16:09	000:02	168.9 - 141.3 MPBT_023LUP
Log Pass (up)	15-Oct-2007 16:11	000:06	44.8 - -2.3 MPBT_024LUP
Simulated Log	15-Oct-2007 17:15	000:04	PERFO_025LUP
Simulated Log	17-Oct-2007 6:58	000:13	PERFO_028LUP

Simulated Log	17-Oct-2007 7:20 000:54	4.4 - 2628.4	PERFO_029LDP
Log Pass (down)	17-Oct-2007 8:14 000:03	2628.3 - 2592.6	PERFO_030LUP
Log Pass (up)	17-Oct-2007 8:19 000:07	2648.4 - 2590.8	PERFO_031LUP
Log Pass (up)	17-Oct-2007 8:34 000:33	2145.6 - -2.1	PERFO_032LUP
Simulated Log	17-Oct-2007 11:18 000:01		PERFO_033LUP
Simulated Log	17-Oct-2007 12:10 000:05		PERFO_034LUP
Log Pass (down)	17-Oct-2007 12:37 000:50	2.1 - 2641.1	PERFO_035LDP
Log Pass (up)	17-Oct-2007 13:28 000:06	2649.3 - 2595.7	PERFO_036LUP
Log Pass (up)	17-Oct-2007 14:08 000:06	89.6 - -1.8	PERFO_037LUP
Simulated Log	20-Oct-2007 10:47 000:11		PERFO_038LUP
Log Pass (down)	20-Oct-2007 15:02 000:09	889.3 - 2179.9	PERFO_041LDP
Log Pass (up)	20-Oct-2007 15:12 000:05	2180.2 - 2133.6	PERFO_042LUP
Log Pass (up)	20-Oct-2007 15:22 000:21	2173.7 - 2132.8	PERFO_044LUP
Station Log	20-Oct-2007 15:25 000:16	2150.1 - 2.1	PERFO_045LTP

Schlumberger

Gun # 1
2153.5m to 2156m MDKB.

MAXIS Field Log



TIME DEGF PSIA

2400.0	212.76	2327.476
2340.0	212.88	2321.115
2280.0	213.15	2328.459
2220.0	213.56	2326.373
2160.0	214.54	2332.844
2100.0	216.98	2346.498
2040.0	219.76	2354.606
1980.0	212.91	2396.819
1920.0	212.96	2502.878
1860.0	212.99	2515.869
1800.0	212.97	2515.153
1740.0	212.97	2515.483
1680.0	213.00	2514.242
1620.0	213.02	2513.996

Schlumberger

Gun Correlation Pass

MAXIS Field Log

Company: Esso Australia Pty Ltd. Well: A-4B

Input DLIS Files

DEFAULT PERFO_042LUP FN:41 PRODUCER 20-Oct-2007 15:12 2180.2 M 2133.6 M

Output DLIS Files

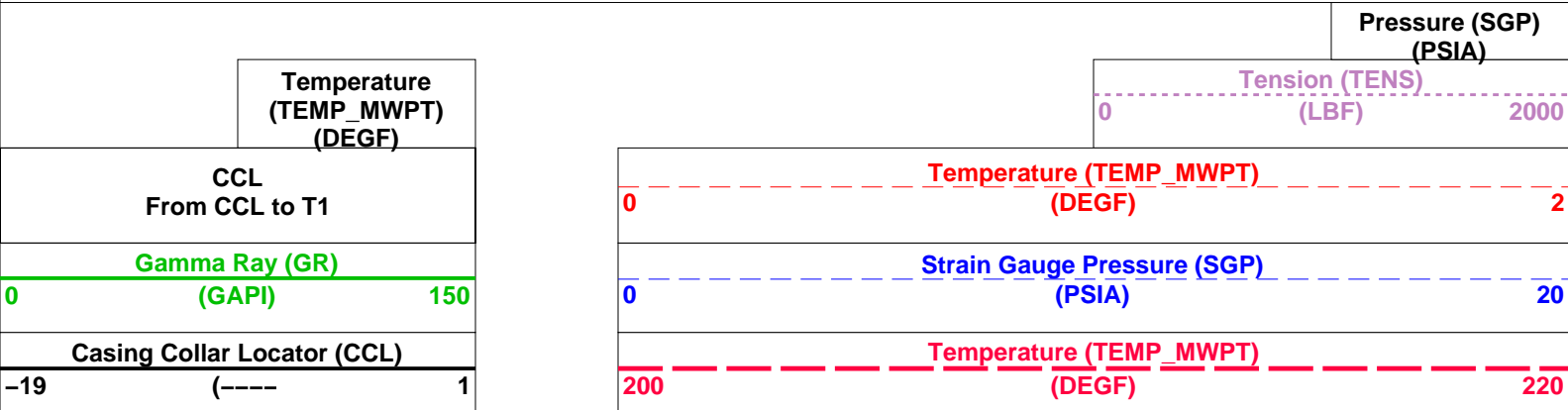
DEFAULT PERFO_043PUP FN:42 PRODUCER 20-Oct-2007 15:18 2176.9 M 2130.7 M

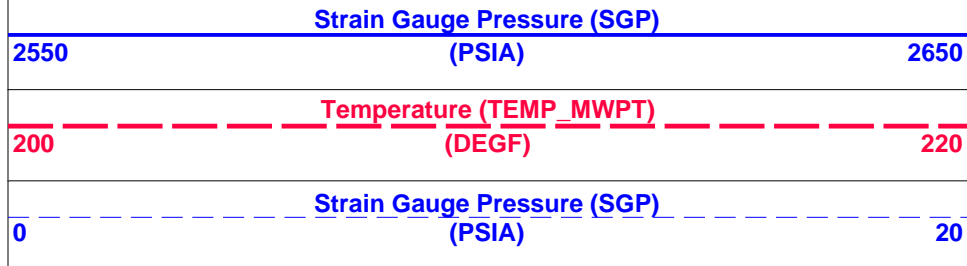
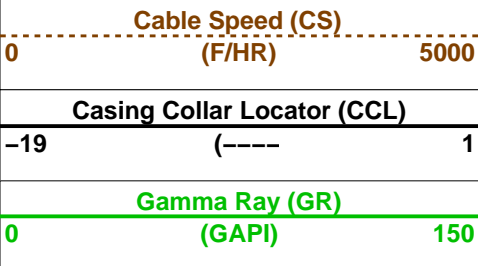
OP System Version: 14C0-302
MCM

MWP_GUN 14C0-302 MWPT-CA 14C0-302
MWGT-AA 14C0-302

PIP SUMMARY

Time Mark Every 60 S





CCL From CCL to T1		Temperature (TEMP_MWPT) (DEGF)02	
	Temperature (TEMP_MWPT) (DEGF)	Tension (TENS) (LBF)02000	
		Pressure (SGP) (PSIA)	


PIP SUMMARY			
Time Mark Every 60 S			

Parameters			
DLIS Name	Description	Value	
MWPT-CA: MEASUREMENT WHILE PERFORATING TOOL			
DEVI_FL_CORR	Deviation Angle for Flow Line Correction	0	DEG
FLD	Flow Line Density	1	G/C3
MWPT_NULL_SOURCE	MWPT NULL Temperature Source	TEMS	
MWPT_NULL_TEMP	MWPT NULL Temperature	0.0	DEGC
System and Miscellaneous			
DO	Depth Offset for Playback	-3.4	M
PP	Playback Processing	NORMAL	

Format: MWP	Vertical Scale: 1:200	Graphics File Created: 20-Oct-2007 15:18
-------------	-----------------------	--

OP System Version: 14C0-302			
MCM			
MWP_GUN	14C0-302	MWPT-CA	14C0-302
MWGT-AA	14C0-302		

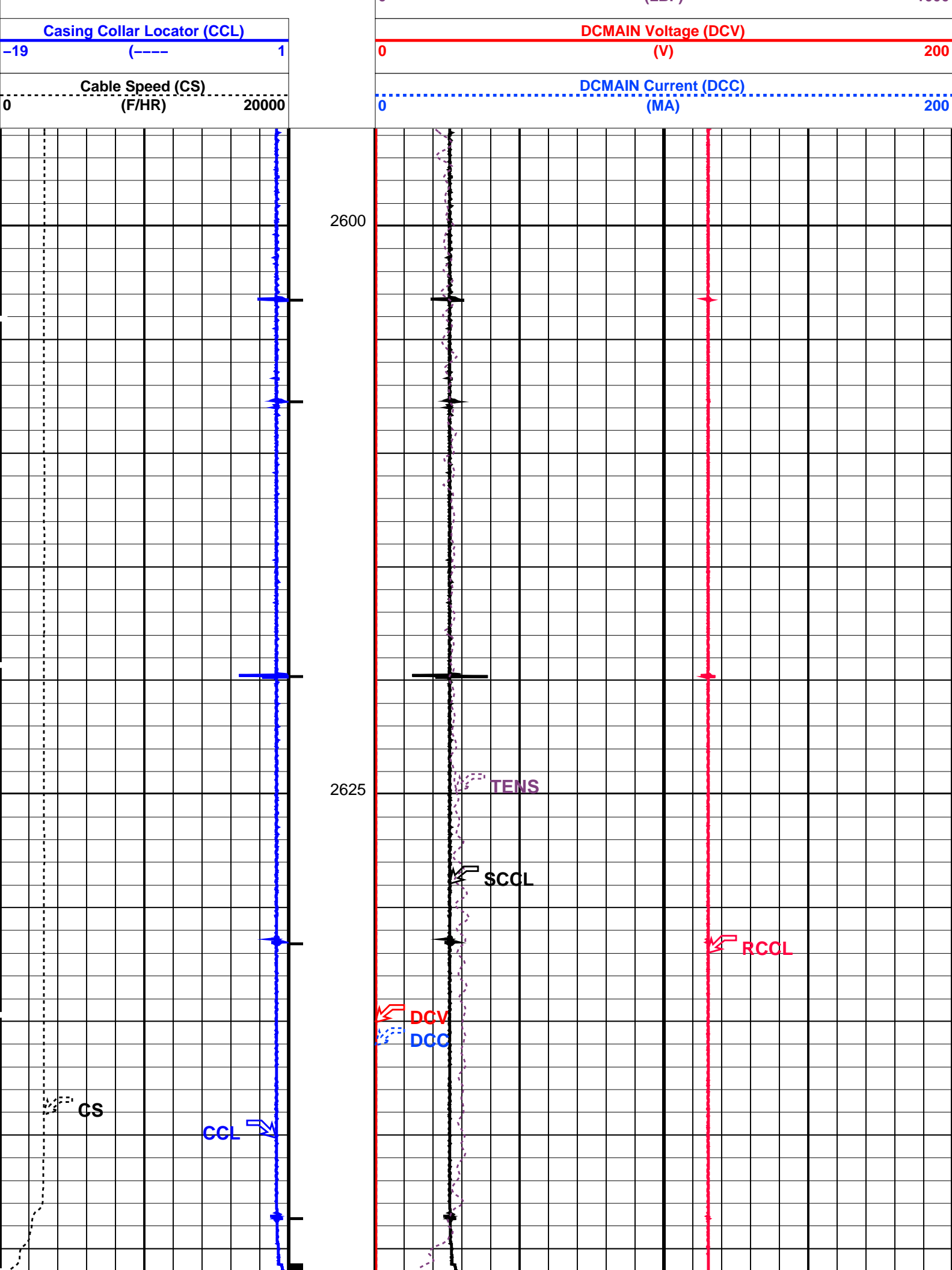
Input DLIS Files					
DEFAULT	PERFO_042LUP	FN:41	PRODUCER	20-Oct-2007 15:12	2180.2 M 2133.6 M
Output DLIS Files					
DEFAULT	PERFO_043PUP	FN:42	PRODUCER	20-Oct-2007 15:18	

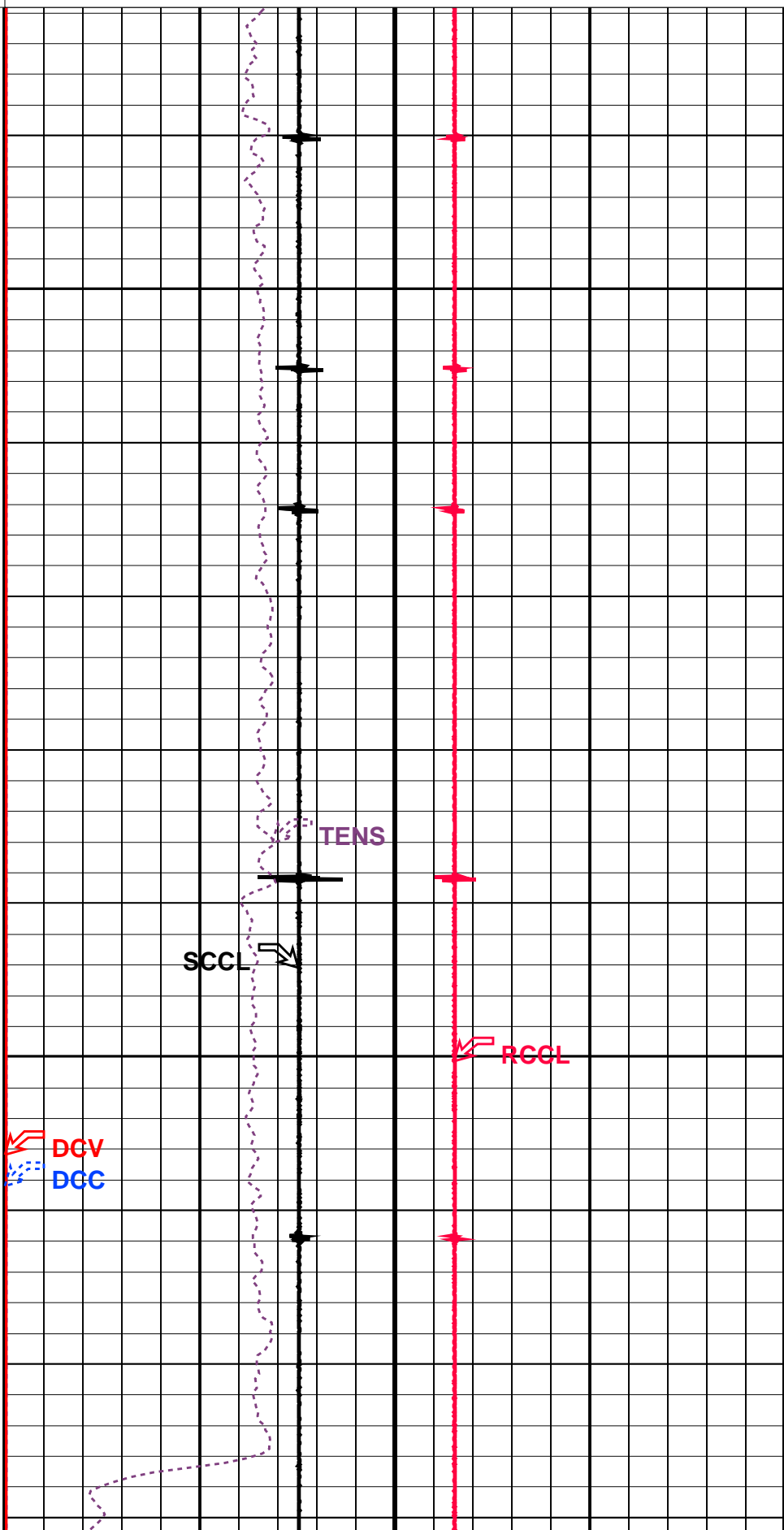
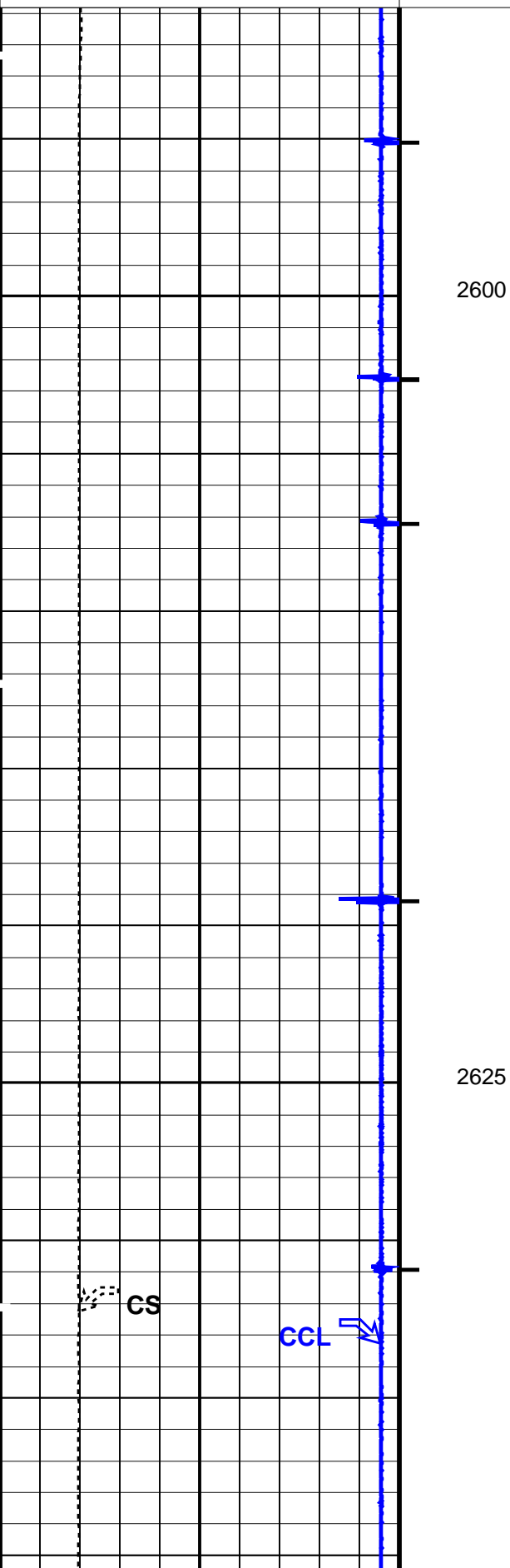
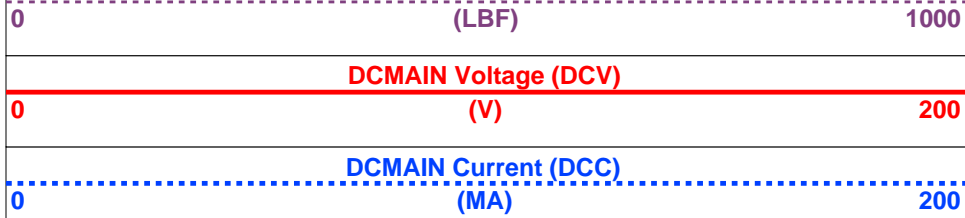
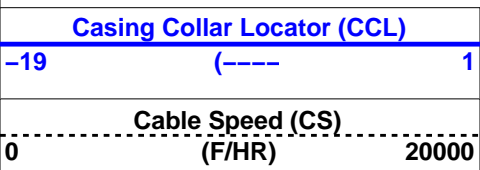
		Cement Dump Pass
MAXIS Field Log		

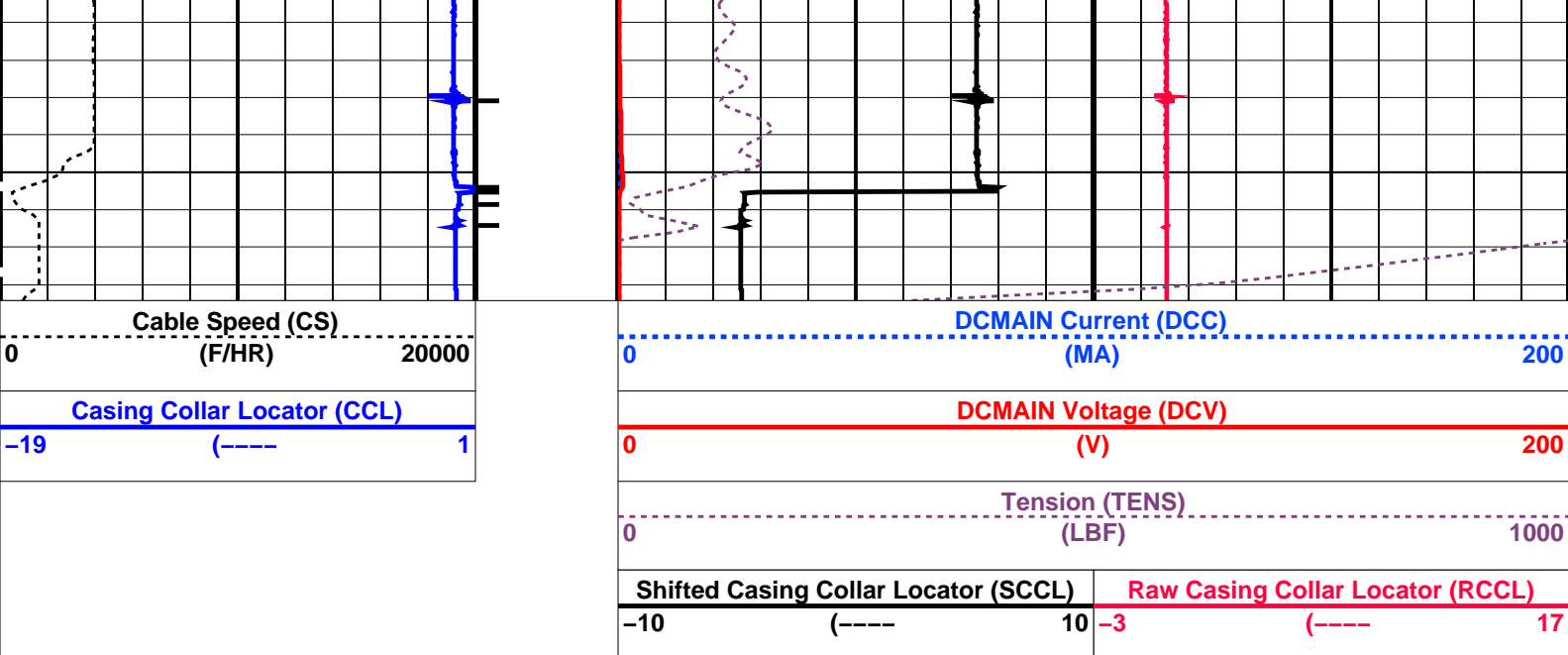
Output DLIS Files					
DEFAULT	PERFO_036LUP	FN:35	PRODUCER	17-Oct-2007 13:28	2649.3 M 2595.7 M
OP System Version: 14C0-302					
MCM					
SHM_GUN	14C0-302	CCL-L	14C0-302		

PIP SUMMARY			
Casing Collars			
Time Mark Every 60 S			

		Shifted Casing Collar Locator (SCCL)		Raw Casing Collar Locator (RCCL)			
		-10	(----	10	-3	(----	17
		Tension (TENS)					
		0					
		(LBF)					
		1000					







PIP SUMMARY

Time Mark Every 60 S

Parameters

DLIS Name	Description	Value
CCLD	CCL-L: Casing Collar Locator	12 IN
CCLT	CCL reset delay	0.3 V
	CCL Detection Level	

Format: PERFO Vertical Scale: 1:200 Graphics File Created: 17-Oct-2007 08:19

OP System Version: 14C0-302

MCM

SHM_GUN 14C0-302 CCL-L 14C0-302

Output DLIS Files

DEFAULT PERFO_031LUP FN:30 PRODUCER 17-Oct-2007 08:19

Schlumberger

7 5/8" MPBT Plug
Set @ 2660m MDKB

MAXIS Field Log

Output DLIS Files

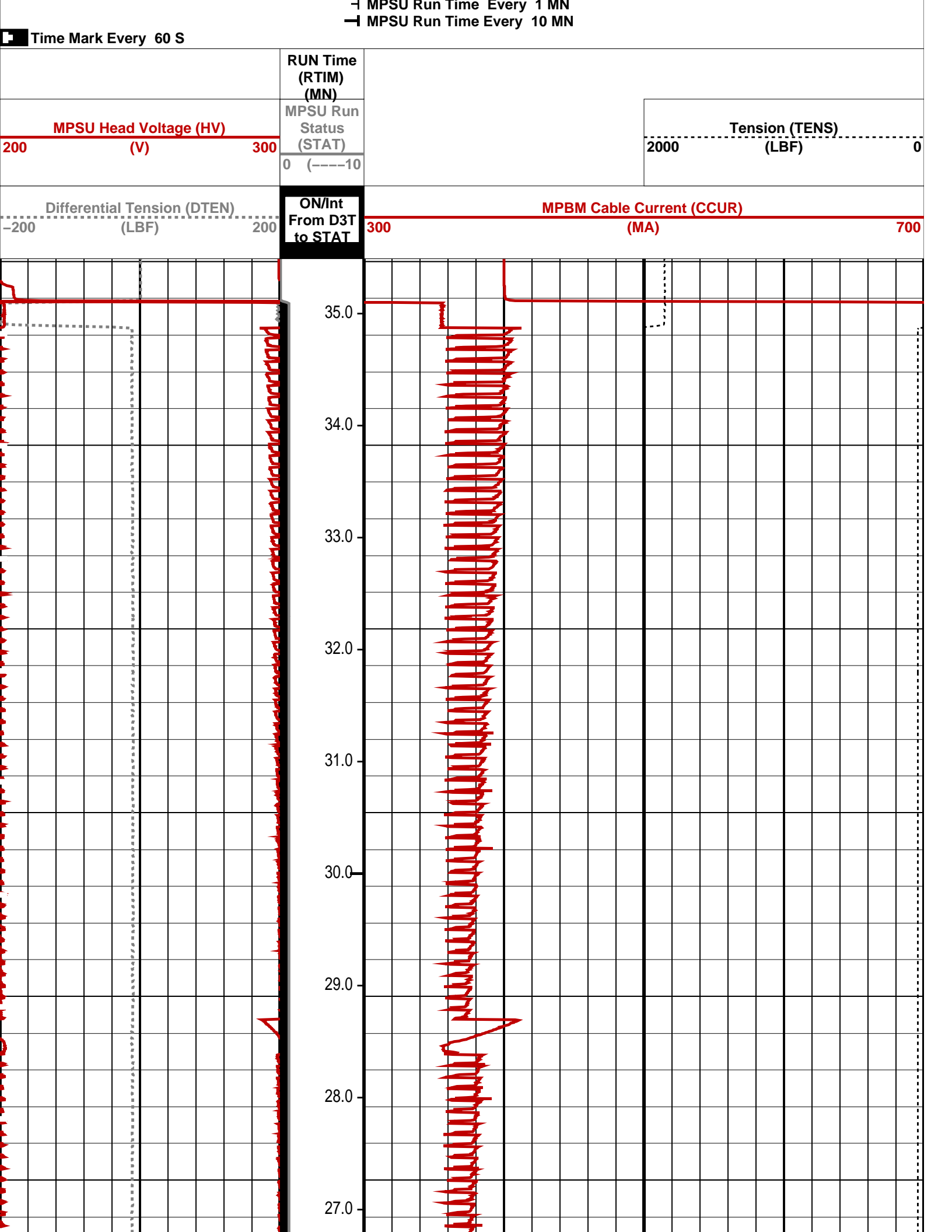
DEFAULT MPBT_020LUP FN:19 PRODUCER 15-Oct-2007 14:57

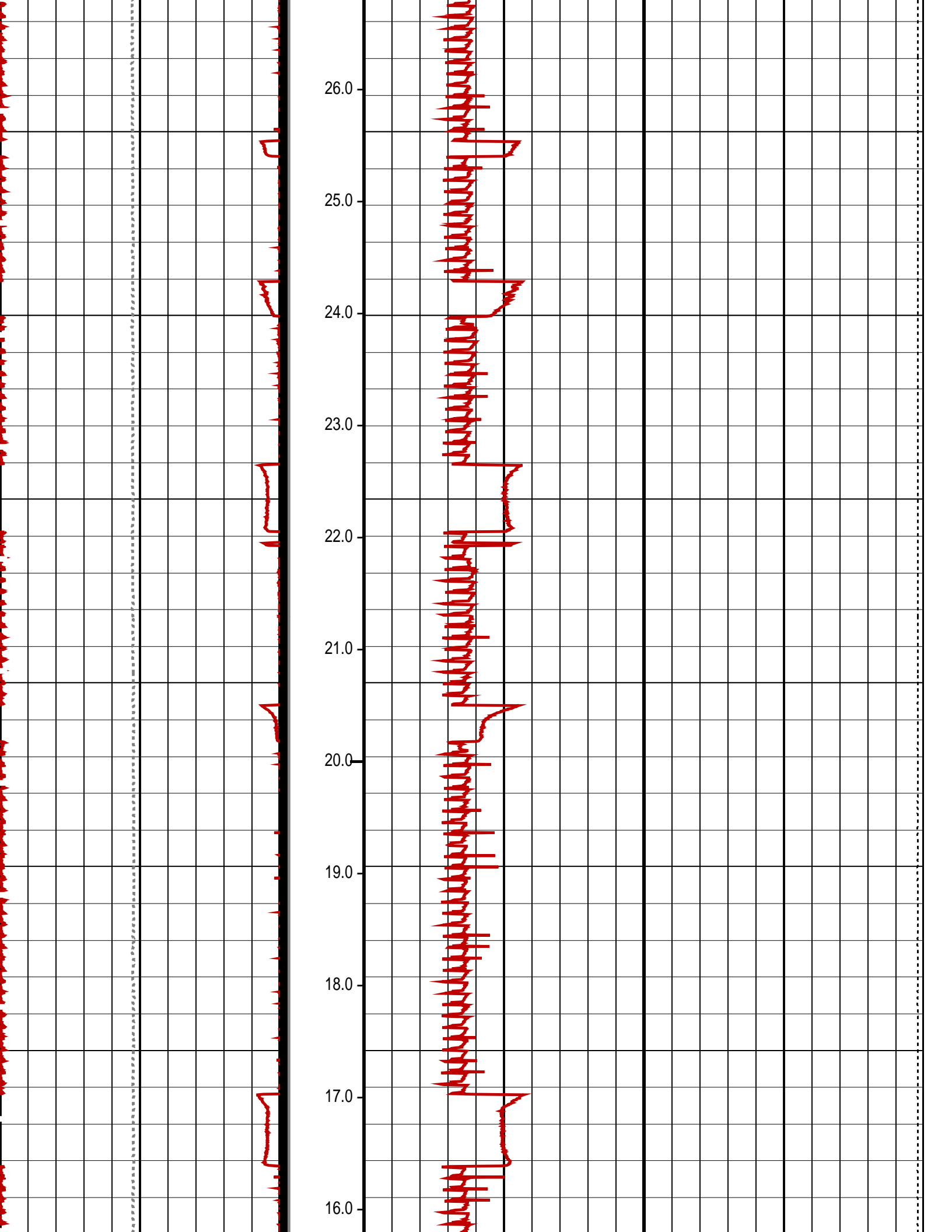
OP System Version: 14C0-302

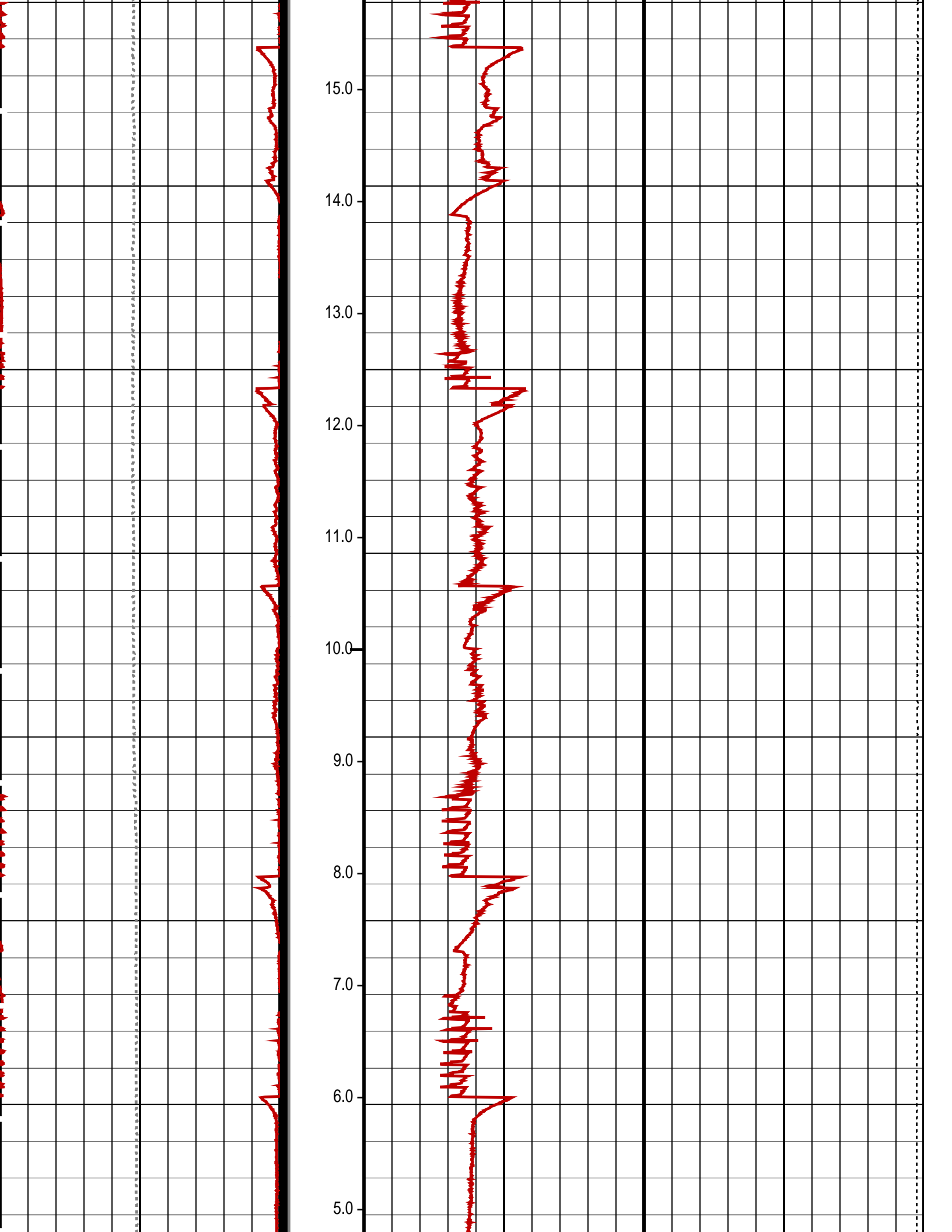
MCM

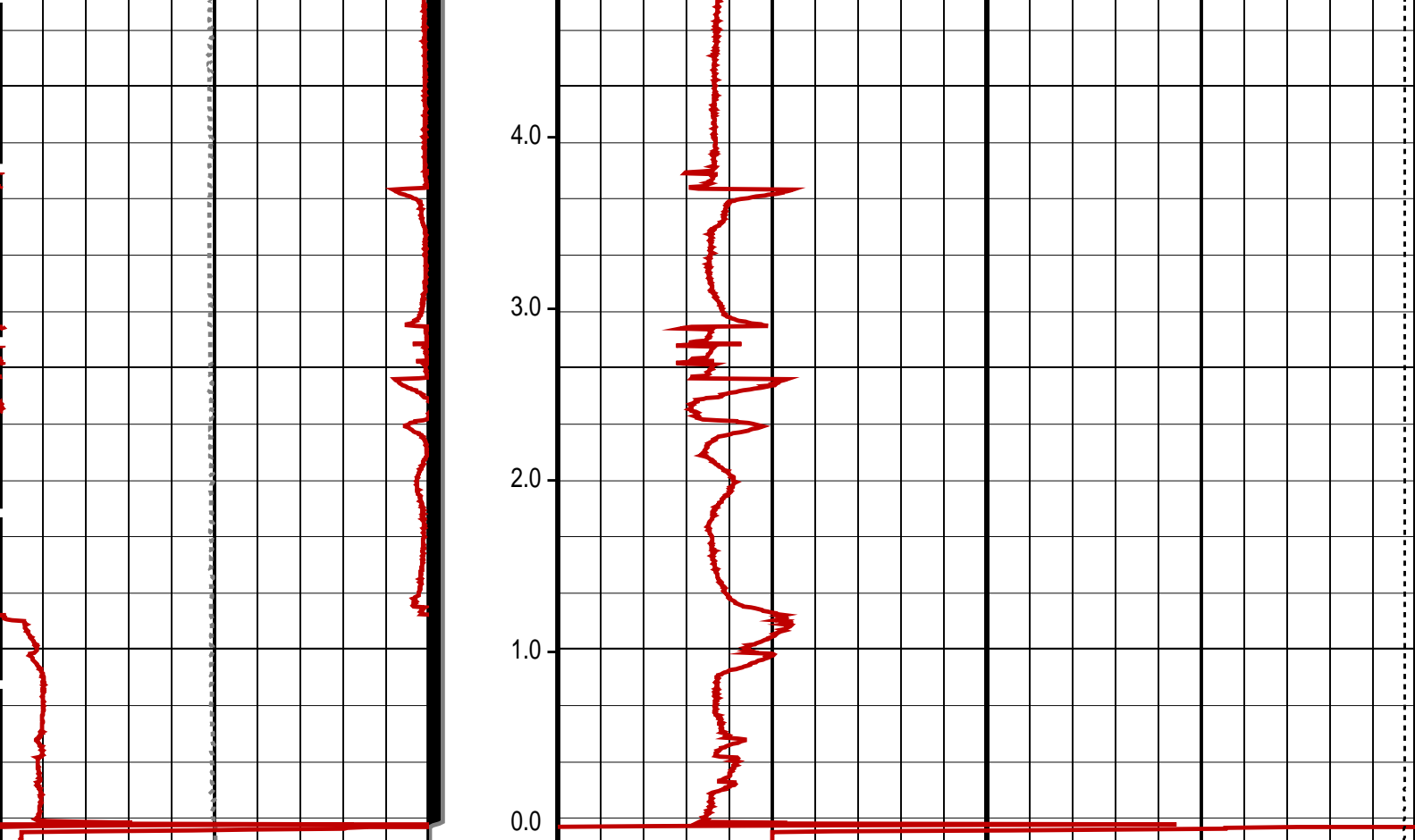
MPEX-BA 14C0-302 MPSU-CA 14C0-302
CCL-L 14C0-302

PIP SUMMARY









Differential Tension (DTEN) (LBF)	ON/Int From D3T to STAT	MPBM Cable Current (CCUR) (MA)
-200 200		300 700
MPSU Head Voltage (HV) (V)	MPSU Run Status (STAT)	Tension (TENS) (LBF)
200 300	0 (----10)	2000 0
	RUN Time (RTIM) (MN)	

PIP SUMMARY
⊥ MPSU Run Time Every 1 MN
⇝ MPSU Run Time Every 10 MN
Time Mark Every 60 S

Parameters			
DLIS Name	Description		Value
MPSU-CA: MECHANICAL PLUGBACK SETTING UNIT IPUMP	Intensifier Pump		TRUE
Format: MPBT	Vertical Scale: 1:600	Graphics File Created: 15-Oct-2007 14:57	
OP System Version: 14C0-302 MCM			
MPEX-BA CCL-L	14C0-302 14C0-302	MPSU-CA	14C0-302
Output DLIS Files			
DEFAULT	MPBT_020LUP	FN:19	PRODUCER 15-Oct-2007 14:57

Output DLIS Files

DEFAULT MPBT_019LUP FN:18 PRODUCER 15-Oct-2007 14:47 2621.0 M 2569.2 M

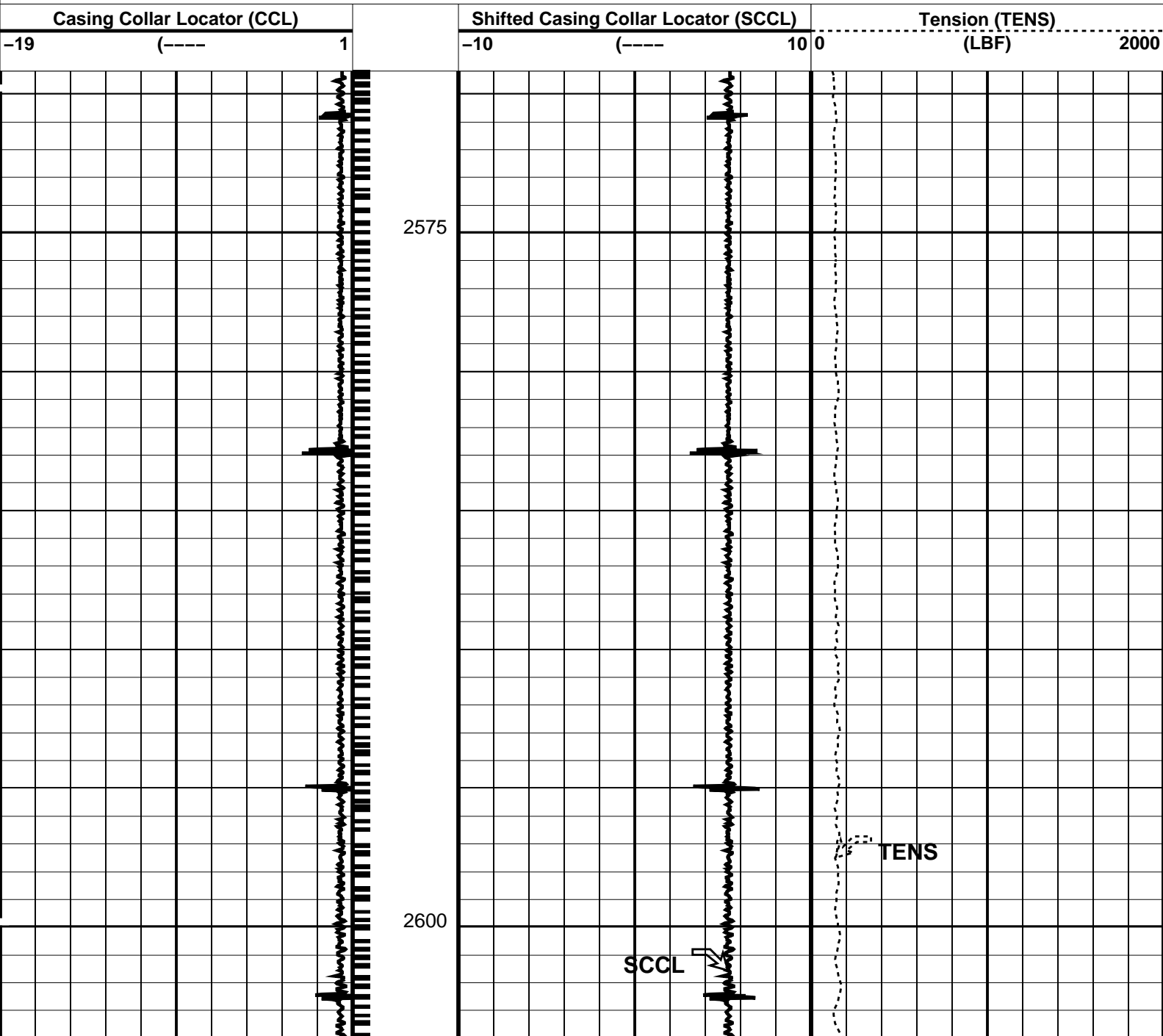
OP System Version: 14C0-302
MCM

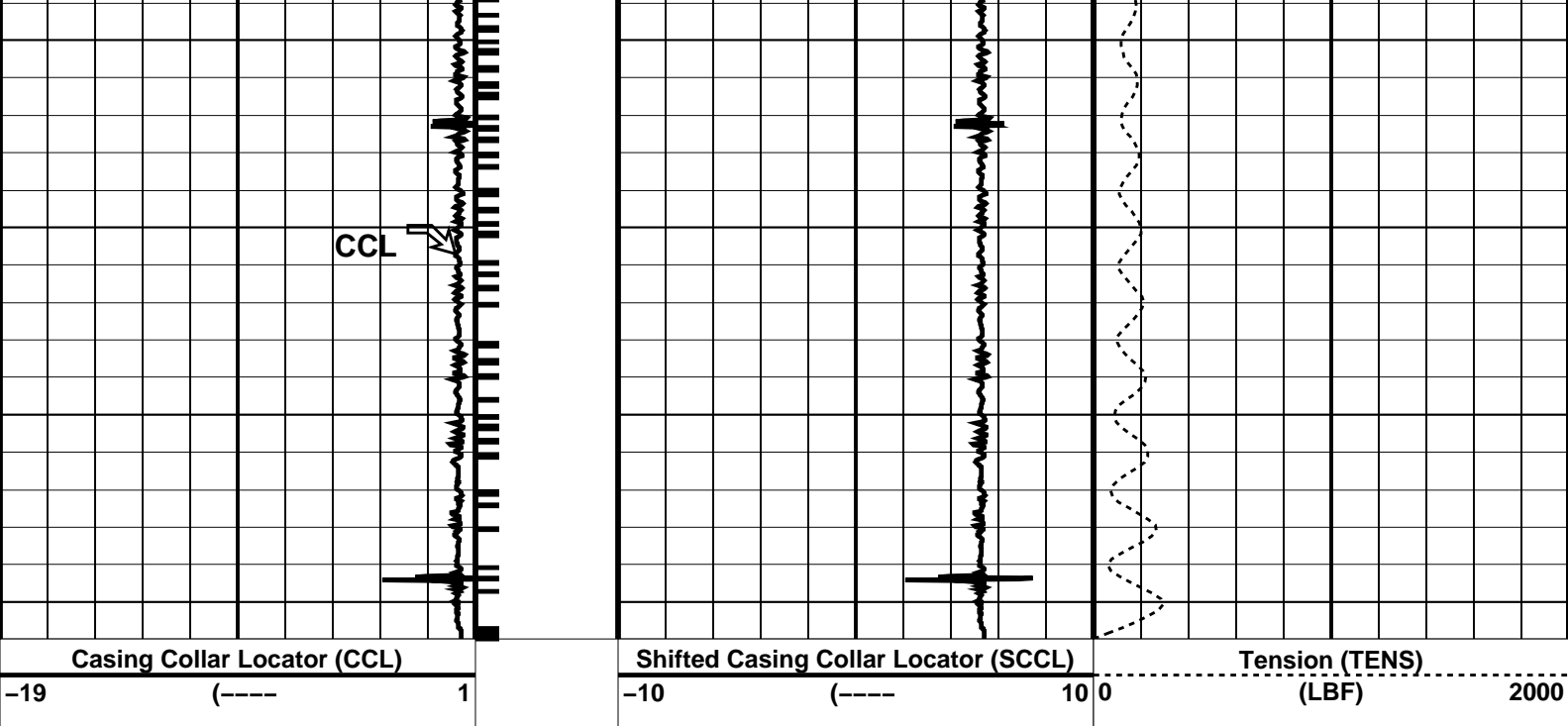
MPEX-BA 14C0-302 MPSU-CA 14C0-302
CCL-L 14C0-302

PIP SUMMARY

└─ Casing Collars

■ Time Mark Every 60 S





PIP SUMMARY

Time Mark Every 60 S

Parameters

DLIS Name	Description	Value
CCL-L: Casing Collar Locator		
CCLD	CCL reset delay	12 IN
CCLT	CCL Detection Level	0.3 V

Format: PERFO Vertical Scale: 1:200 Graphics File Created: 15-Oct-2007 14:47

OP System Version: 14C0-302
MCM

MPEX-BA 14C0-302 MPSU-CA 14C0-302
CCL-L 14C0-302

Output DLIS Files

DEFAULT MPBT_019LUP FN:18 PRODUCER 15-Oct-2007 14:47

Schlumberger

2 1/8" Dummy MPBT
Plug Pass

MAXIS Field Log

Company: Esso Australia Ltd. Well: FLA_A-4b

Input DLIS Files

DEFAULT PSP_011LUP FN:10 PRODUCER 15-Oct-2007 11:52 2677.8 M 2046.4 M

Output DLIS Files

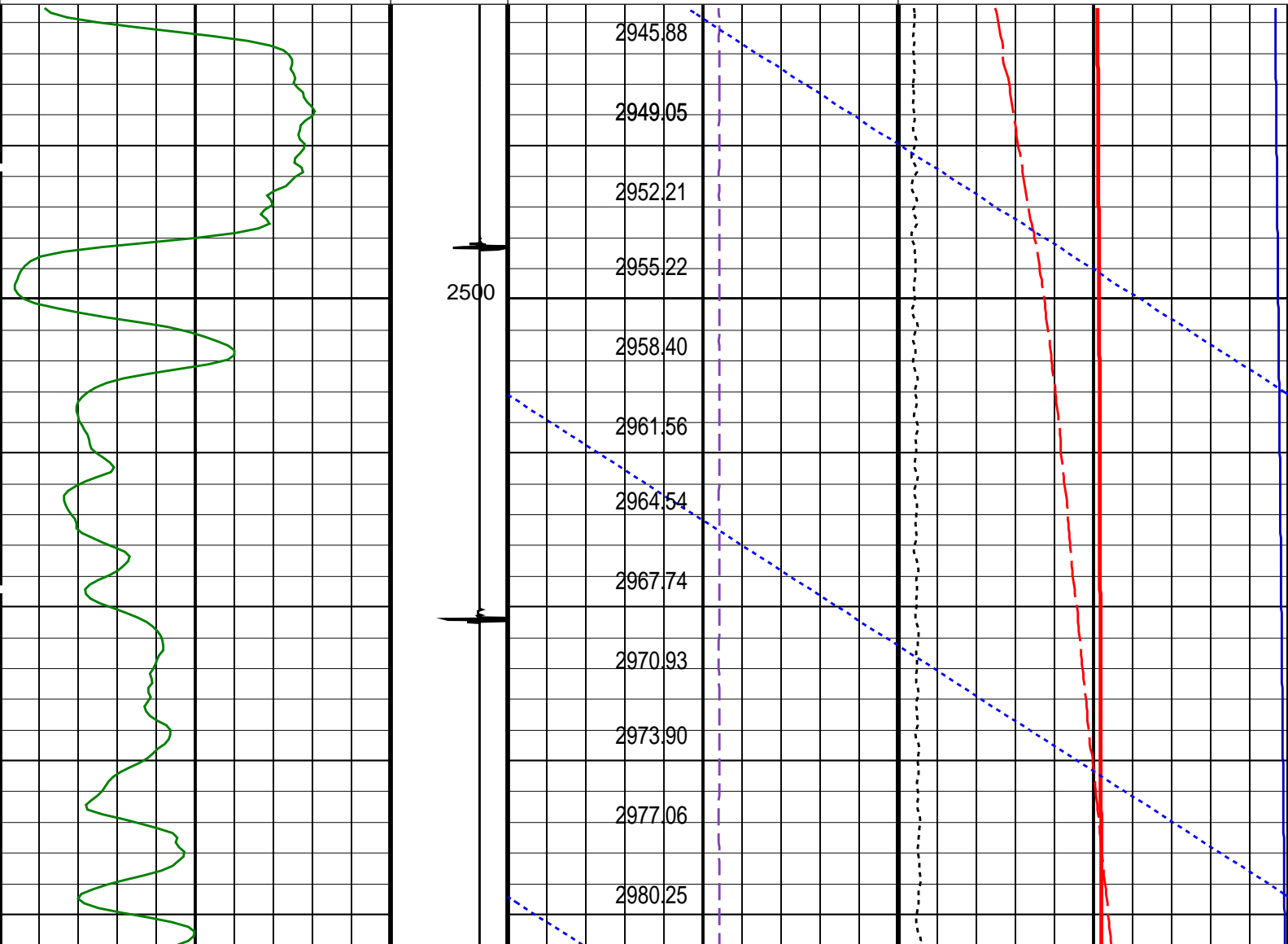
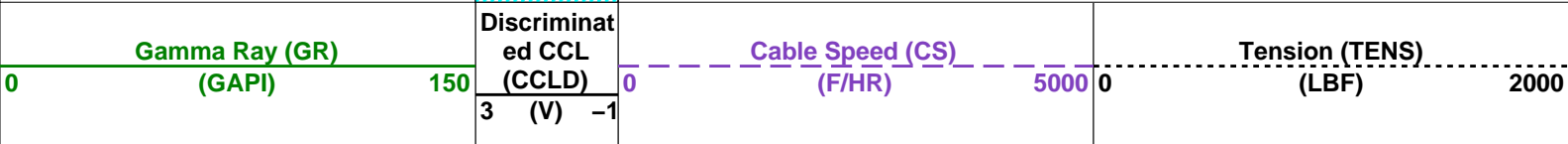
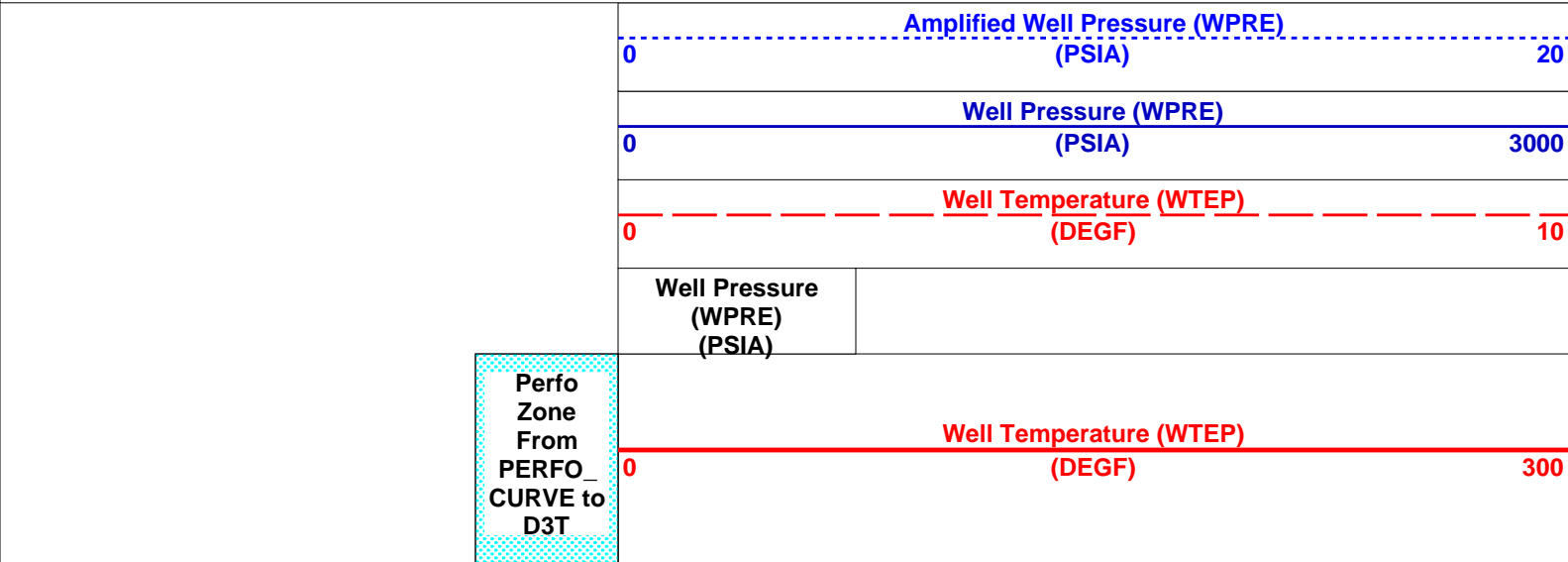
DEFAULT PSP_012PUP FN:11 PRODUCER 15-Oct-2007 12:49 2677.4 M 2490.4 M

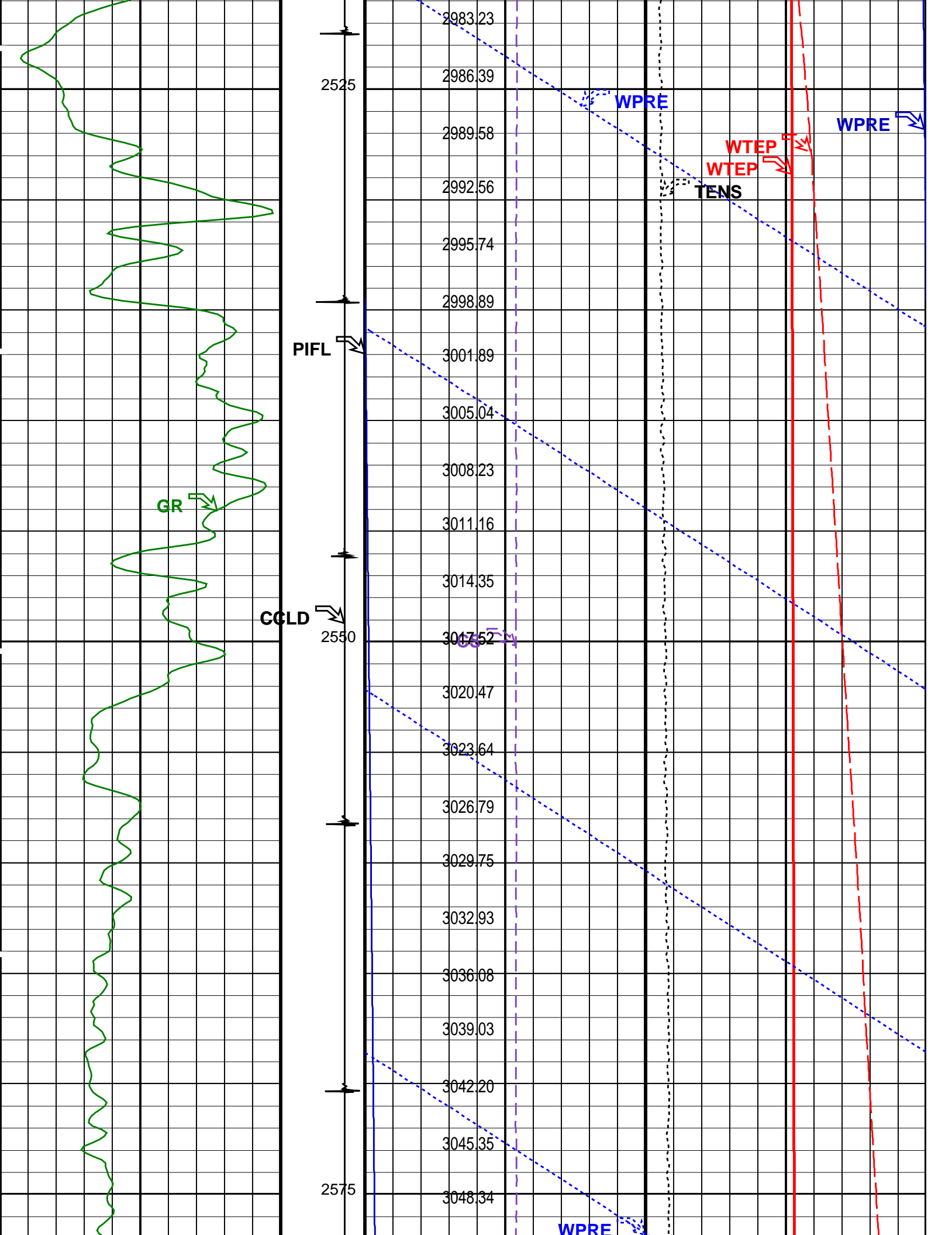
OP System Version: 14C0-302
MCM

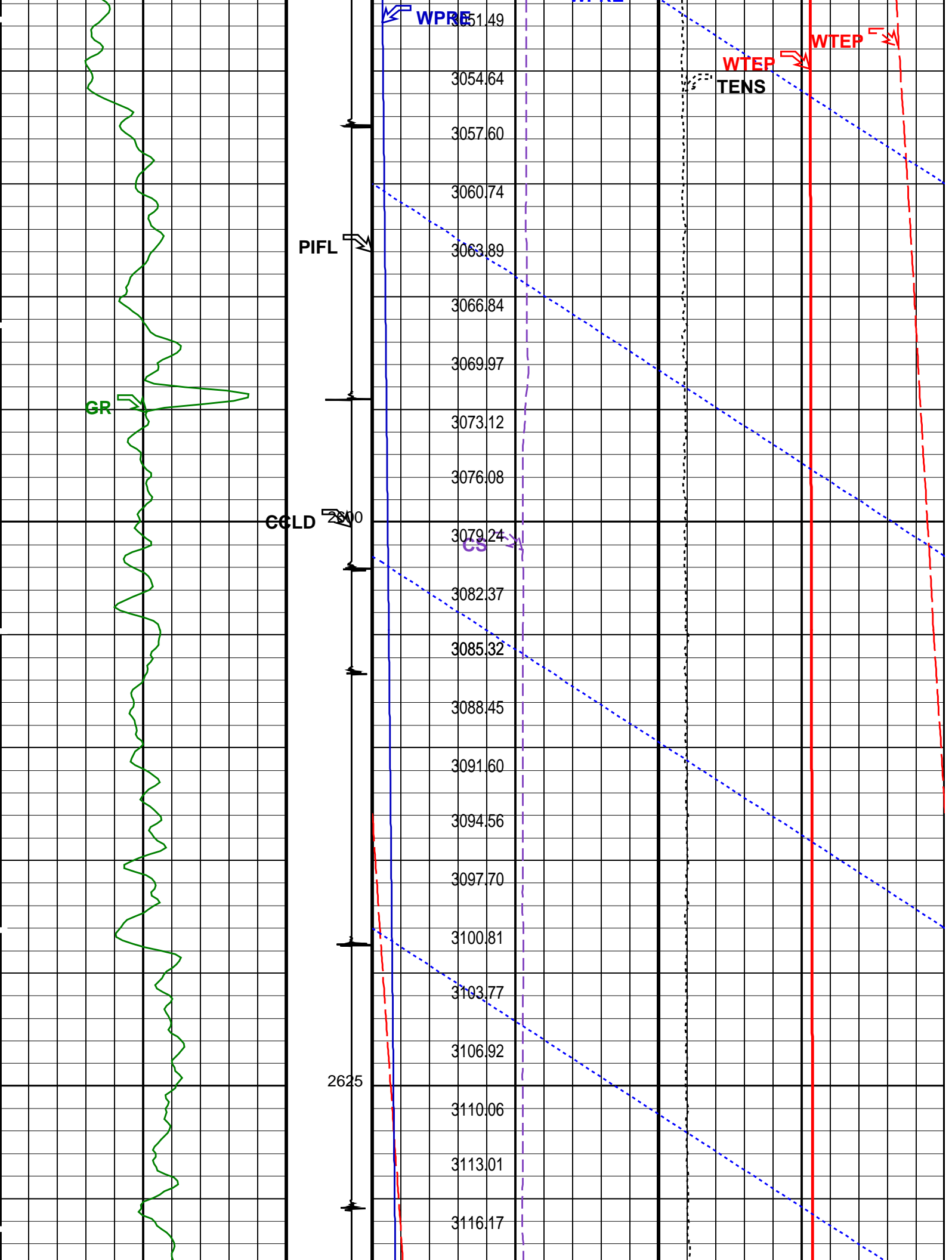
PSPT-A/B 14C0-302

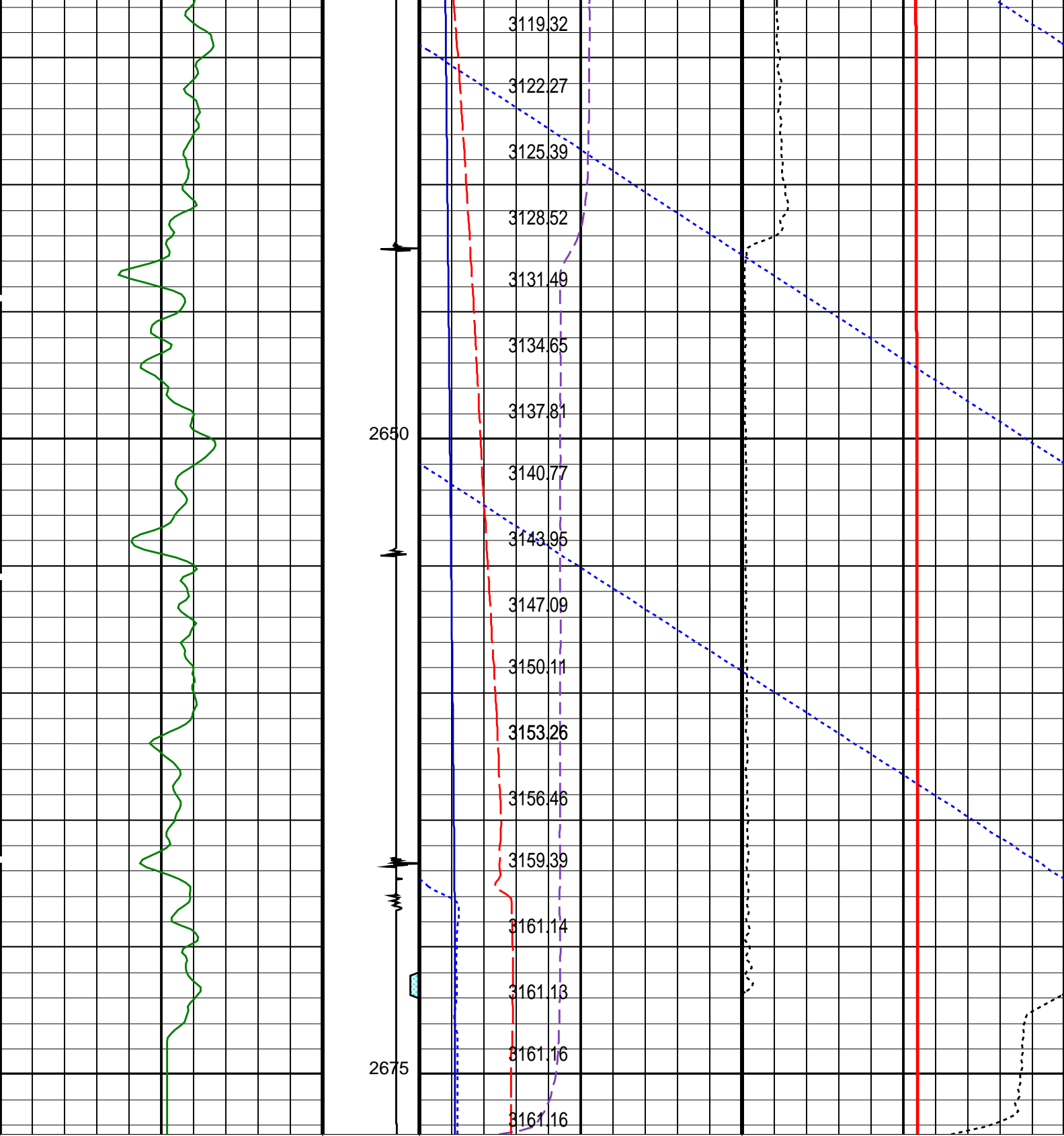
PIP SUMMARY

Time Mark Every 60 S









Gamma Ray (GR) (GAPI)	Discriminat ed CCL (CCLD) (V)	Cable Speed (CS) (F/HR)	Tension (TENS) (LBF)
0	3	0	0
150	-1	5000	2000

Perfo Zone From PERFO_ CURVE to D3T	Well Temperature (WTEP) (DEGF)
	0
	300

Well Pressure
(WPRE)

	(PSIA)	
	Well Temperature (WTEP)	
0	(DEGF)	10
	Well Pressure (WPRE)	
0	(PSIA)	3000
	Amplified Well Pressure (WPRE)	
0	(PSIA)	20

PIP SUMMARY		
Time Mark Every 60 S		

Format: PSP_1	Vertical Scale: 1:200	Graphics File Created: 15-Oct-2007 12:49
---------------	-----------------------	--

OP System Version: 14C0-302		
MCM		
PSPT-A/B	14C0-302	

Parameters						
DLIS Name		Description			Value	
System and Miscellaneous						
DO		Depth Offset for Playback			-0.4	M
PP		Playback Processing			NORMAL	
Input DLIS Files						
DEFAULT	PSP_011LUP	FN:10	PRODUCER	15-Oct-2007 11:52	2677.8 M	2046.4 M
Output DLIS Files						
DEFAULT	PSP_012PUP	FN:11	PRODUCER	15-Oct-2007 12:49		

Company:	Esso Australia Pty Ltd.	Schlumberger
Well:	A-4B	
Field:	Flounder	
Rig:	Prod 4 / Crane	
Country:	Australia	
7 5/8" MPBT Plug		
2 1/8" Mwpt Powerjet		
Perforation		