

Company: Esso Australia Pty Ltd.

Well: FTA A10A ST1

Field: Fortescue

Rig: Nabors Rig 175

Country: Australia

Rig: Nabors Rig 175
Field: Fortescue
Location: Gippsland
Well: FTA A10A ST1
Company: Esso Australia Pty Ltd.

MAXR Setting Correlation
GR-CCL
11-Aug-07

LOCATION	
Gippsland	Elev.: K.B. 42.49 m
Basin	G.L. -69 m
Bass Strait	D.F. 42.49 m
Permanent Datum:	Mean Sea Level
Log Measured From:	Drill Floor
Drilling Measured From:	Drill Floor

State: Victoria	Max. Well Deviation 66.89 deg	Longitude 148° 16' 41.149" E	Latitude 38° 24' 25.529" S
-----------------	-------------------------------	------------------------------	----------------------------

Logging Date	11-Aug-2007
Run Number	1
Depth Driller	4410 m
Schlumberger Depth	4373 m
Bottom Log Interval	4329 m
Top Log Interval	4230 m
Casing Fluid Type	Inhibited Seawater
Salinity	
Density	8.6 lbm/gal
Fluid Level	
BIT/CASING/TUBING STRING	
Bit Size	8.500 in
From	2955 m
To	4410 m
Casing/Tubing Size	7.000 in
Weight	26 lbm/ft
Grade	
From	2651 m
To	4408 m
Maximum Recorded Temperatures	
Logger On Bottom	11-Aug-2007 15:30
Unit Number	3829 AUSL
Recorded By	C.Rowand
Witnessed By	G. Doty, C.Stead, M.Turner

PVT DATA				Run 1	Run 2	Run 3
Oil Density						
Water Salinity						
Gas Gravity						
Bo						
Bw						
1/Bg						
Bubble Point Pressure						
Bubble Point Temperature						
Solution GOR						
Maximum Deviation	66.89 deg					
CEMENTING DATA						
Primary/Squeeze	Primary					
Casing String No						
Lead Cement Type						
Volume						
Density						
Water Loss						
Additives						
Tail Cement Type						
Volume						
Density						
Water Loss						
Additives						
Expected Cement Top						
Logging Date						
Run Number						
Depth Driller						
Schlumberger Depth						
Bottom Log Interval						
Top Log Interval						
Casing Fluid Type						
Salinity						
Density						
Fluid Level						
BIT/CASING/TUBING STRING						
Bit Size						
From						
To						
Casing/Tubing Size						
Weight						
Grade						
From						
To						
Maximum Recorded Temperatures						
Logger On Bottom						
Unit Number						
Recorded By						
Witnessed By						

DEPTH SUMMARY LISTING

Date Created: 12-AUG-2007 2:13:52

Depth System Equipment

Depth Measuring Device		Tension Device		Logging Cable	
Type:	IDW-E	Type:	CMTD-B/A	Type:	7-46ZV-XS
Serial Number:	727	Serial Number:	1077	Serial Number:	76371
Calibration Date:	14-Jan-2007	Calibration Date:	20-Jul-2007	Length:	5779.92 M
Calibrator Serial Number:	1009	Calibrator Serial Number:	1174	Conveyance Method:	Wireline
Calibration Cable Type:	7-46ZV-XS	Calibration Gain:	1.63	Rig Type:	Offshore_Fixed
Wheel Correction 1:	-5	Calibration Offset:	-700.00		
Wheel Correction 2:	-4				

Depth Control Parameters

Log Sequence:	Subsequent Log In the Well
Reference Log Name:	LWD RM Ideal Vision
Reference Log Run Number:	LWD
Reference Log Date:	5-Aug-2007









Depth Control Remarks

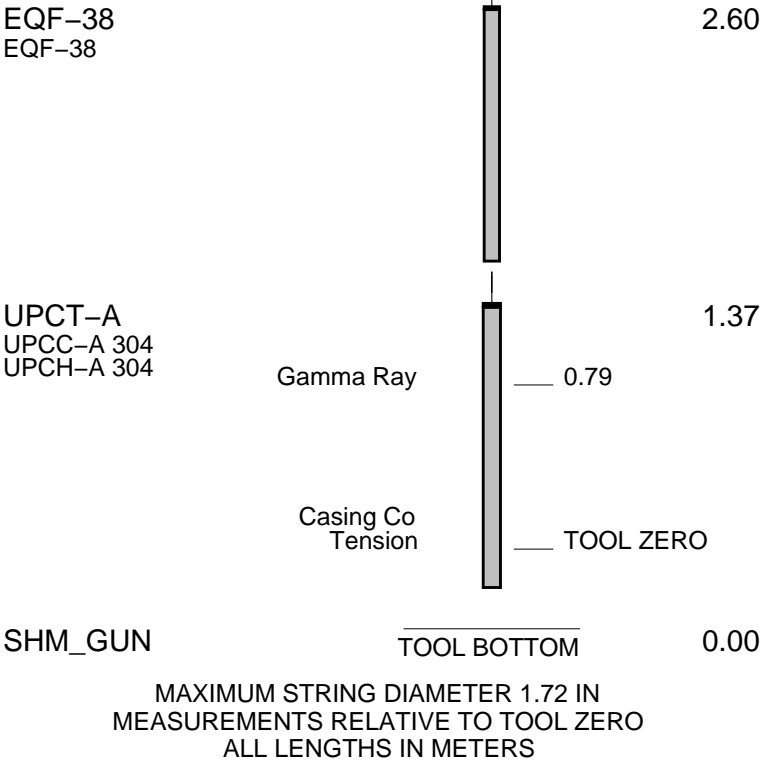
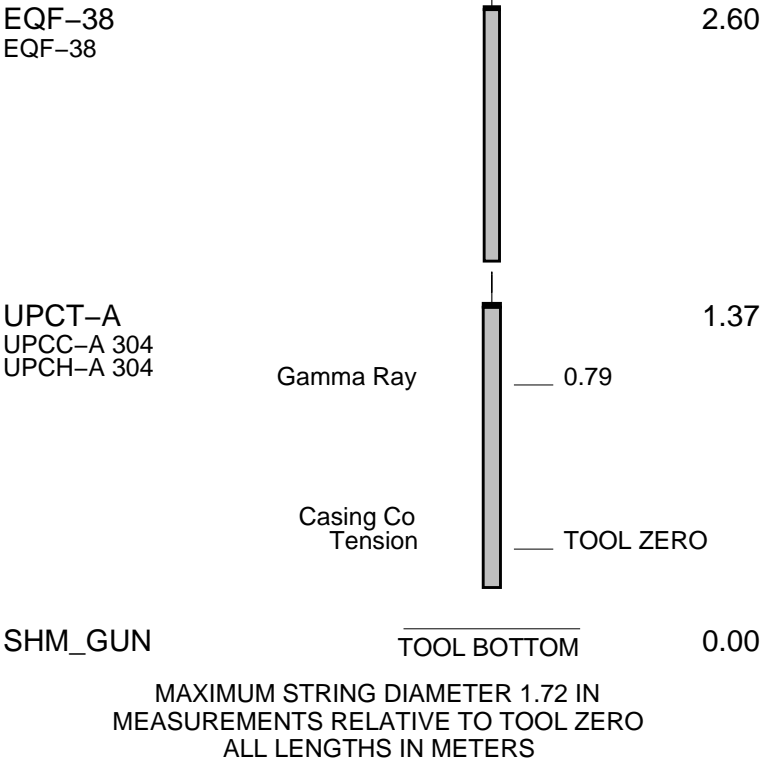
1. Log correlated to LWD RM Ideal Vision Log of 5-Aug-2007
2. Primaty Depth Control was the IDW
3. Secondary Depth Control was the Z-Chart
- 4.
- 5.
6. Log was run inside the 4" Drill Pipe

DISCLAIMER

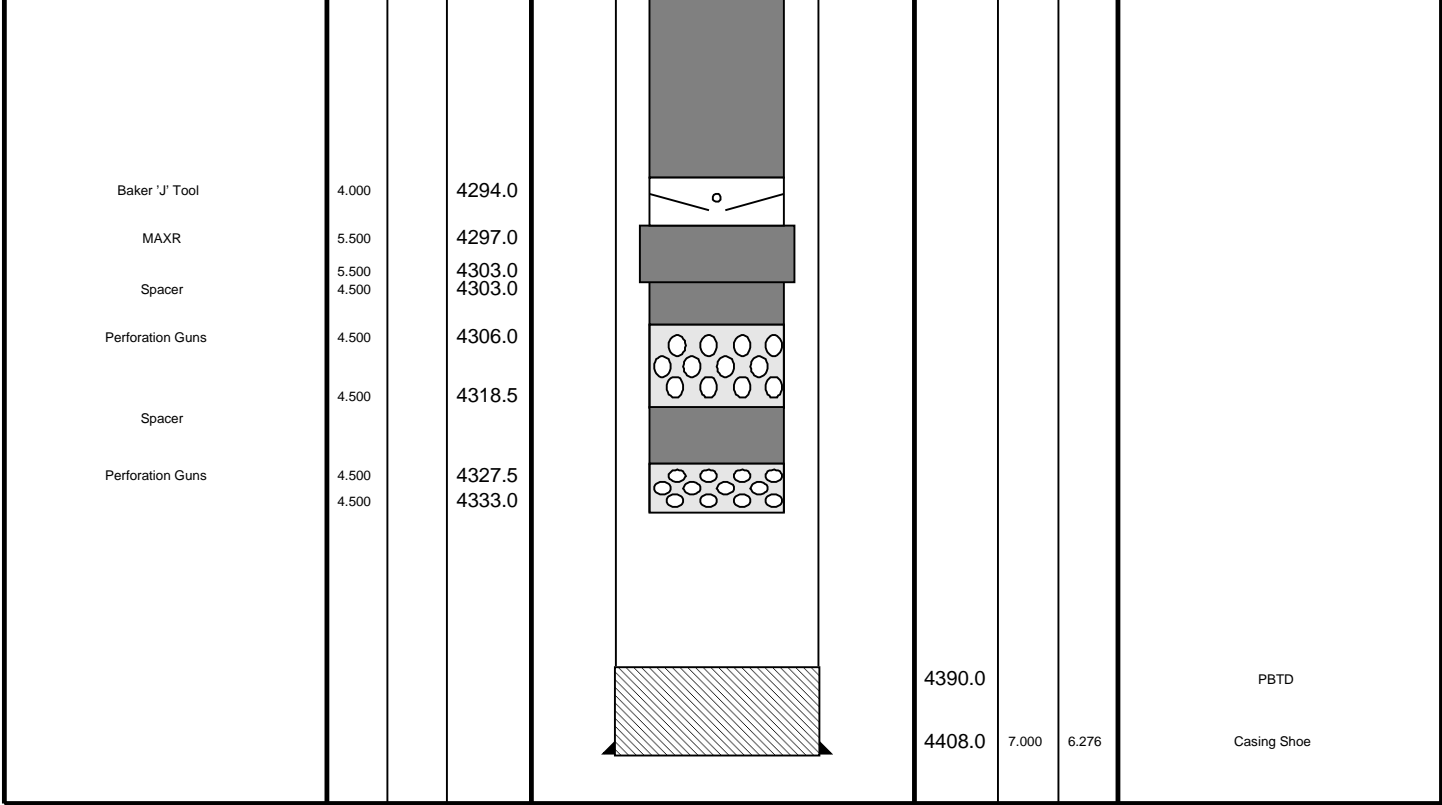
THE USE OF AND RELIANCE UPON THIS RECORDED-DATA BY THE HEREIN NAMED COMPANY (AND ANY OF ITS AFFILIATES, PARTNERS, REPRESENTATIVES, AGENTS, CONSULTANTS AND EMPLOYEES) IS SUBJECT TO THE TERMS AND CONDITIONS AGREED UPON BETWEEN SCHLUMBERGER AND THE COMPANY, INCLUDING: (a) RESTRICTIONS ON USE OF THE RECORDED-DATA; (b) DISCLAIMERS AND WAIVERS OF WARRANTIES AND REPRESENTATIONS REGARDING COMPANY'S USE OF AND RELIANCE UPON THE RECORDED-DATA; AND (c) CUSTOMER'S FULL AND SOLE RESPONSIBILITY FOR ANY INFERENCE DRAWN OR DECISION MADE IN CONNECTION WITH THE USE OF THIS RECORDED-DATA.

OTHER SERVICES1	OTHER SERVICES2
OS1: None	OS1:
OS2:	OS2:
OS3:	OS3:
OS4:	OS4:
OS5:	OS5:
REMARKS: RUN NUMBER 1	REMARKS: RUN NUMBER 2
Correlated to LWD RM Ideal Vision Log of 5–Aug–2007.	
Objective: to correlate the MAXR setting on drill pipe.	
Log was run through drill pipe.	
Casing RA PIP Tag found at 4233.2 M.	
The formation GR. inside the drill pipe is affected by	

the drill pipe connections (thicker mass → less GR).					
Resulting in GR dips at the joint connections.					
Drill Pipe to be moved up 0.63 M.					
Schlumberger Crew					
Days	Rick Murray (Crew chief), Zeb Casey				
Nights	Luke Dooley (Crew chief), Nathan Simmons				
RUN 1			RUN 2		
SERVICE ORDER #:			SERVICE ORDER #:		
PROGRAM VERSION:			PROGRAM VERSION:		
FLUID LEVEL:			FLUID LEVEL:		
LOGGED INTERVAL	START	STOP	LOGGED INTERVAL	START	STOP
EQUIPMENT DESCRIPTION					
RUN 1			RUN 2		
SURFACE EQUIPMENT			SURFACE EQUIPMENT		
SHM-EA			SHM-EA		
DOWNHOLE EQUIPMENT			DOWNHOLE EQUIPMENT		
MH-22 MH-22		7.36	MH-22 MH-22		7.36
EQF-43 EQF-43		6.88	EQF-43 EQF-43		6.88
EQF-38 EQF-38		5.05	EQF-38 EQF-38		5.05
EQF-38 EQF-38		3.83	EQF-38 EQF-38		3.83



Production String	(in)		(m)	Well Schematic	(m)	(in)		Casing String	
	OD	ID	MD		MD	OD	ID		
4" Drill Pipe	4.000		0			9.625		Casing String	
						2651.0	7.000	6.276	Casing String Liner Hanger
						2651.0	9.625	7.000	
						9.625		Casing Shoe	



GR-CCL # 3 Correlation

MAXIS Field Log

Company: Esso Australia Pty Ltd Well: FTA A10A ST1

Input DLIS Files

DEFAULT	PERFO_021LUP	FN:29	PRODUCER	12-Aug-2007 01:33	4285.0 M	4230.0 M
---------	--------------	-------	----------	-------------------	----------	----------

Output DLIS Files

DEFAULT	PERFO_021PUP	FN:30	PRODUCER	12-Aug-2007 01:40	4281.7 M	4227.1 M
---------	--------------	-------	----------	-------------------	----------	----------

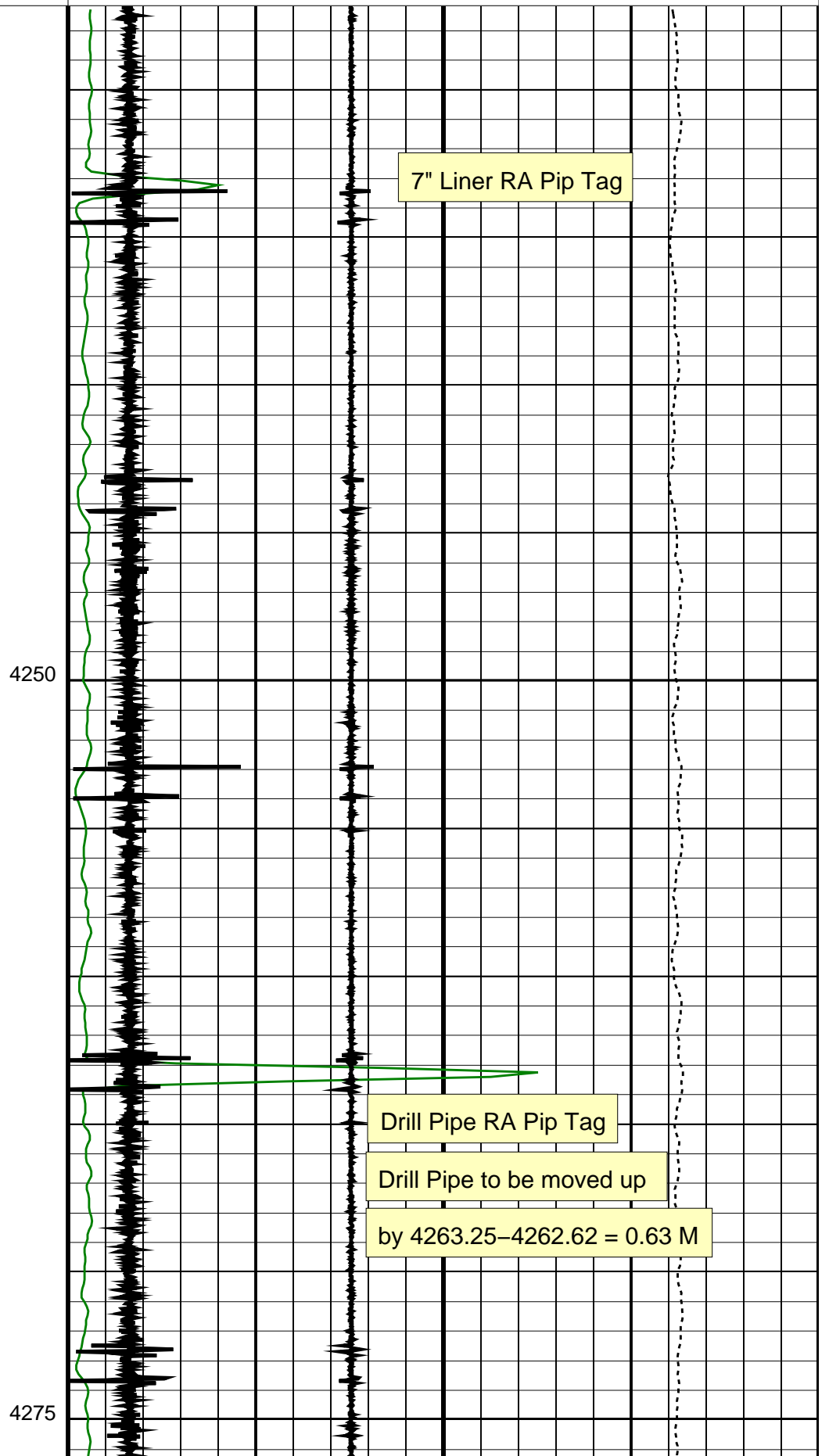
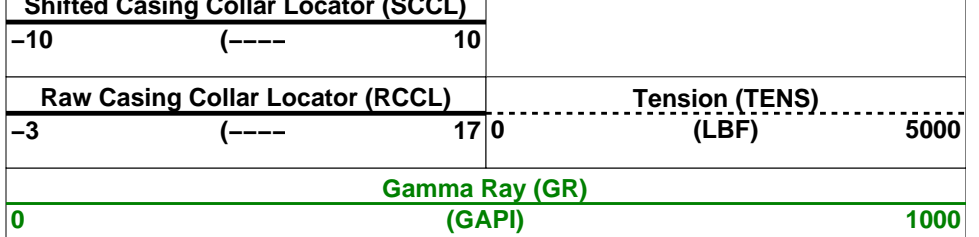
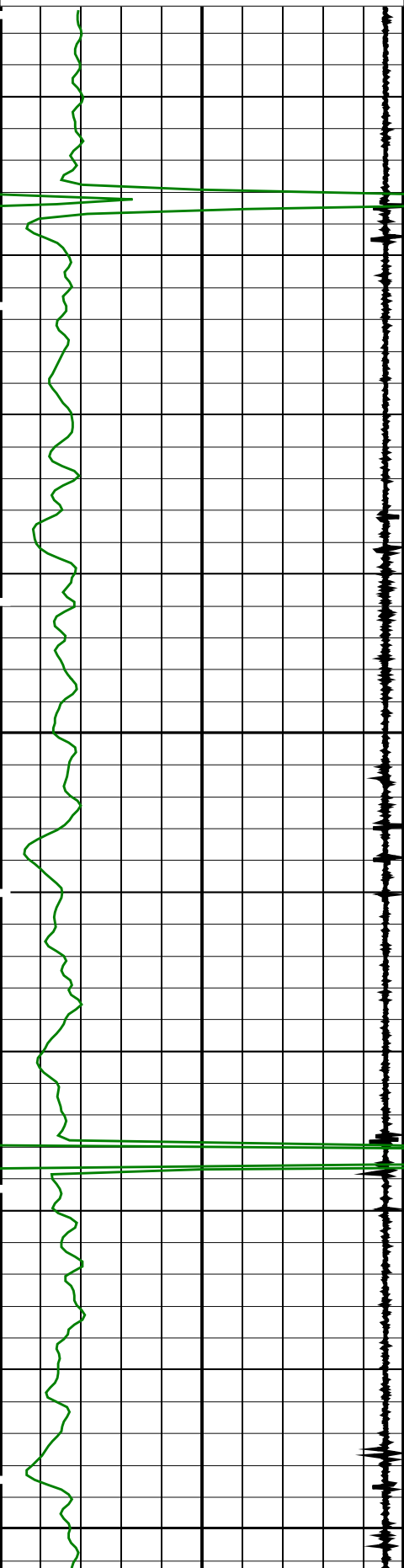
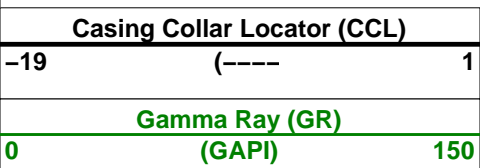
OP System Version: 15C0-309 MCM

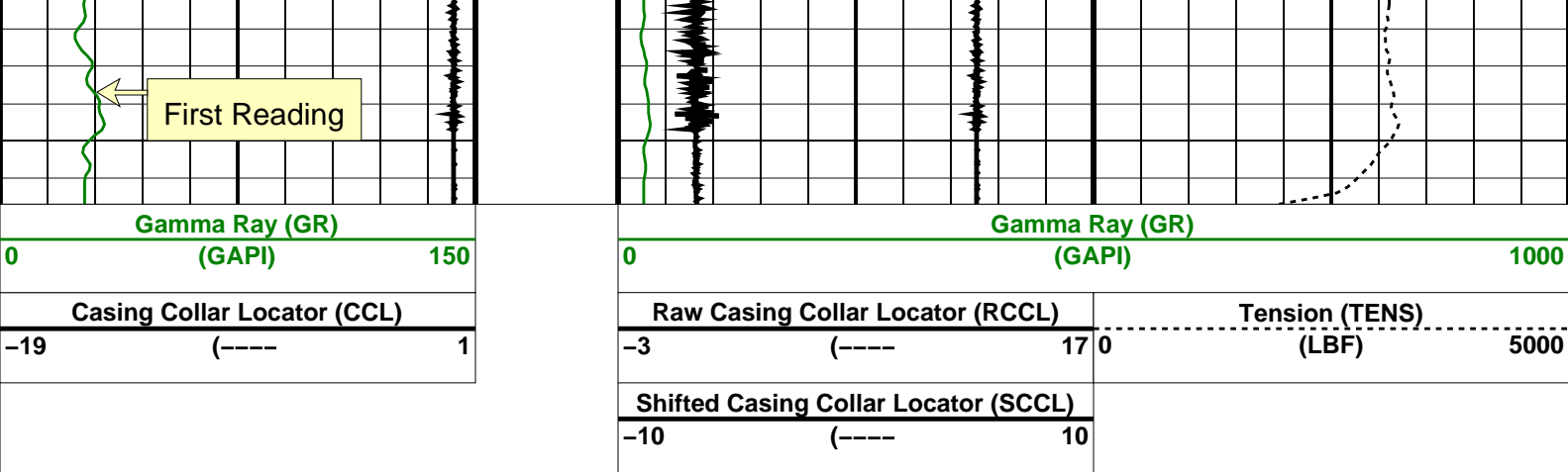
SHM_GUN	15C0-309	UPCT-A	15C0-309
---------	----------	--------	----------

PIP SUMMARY

Time Mark Every 60 S

Shifted Correlation (CCL)





PIP SUMMARY

Time Mark Every 60 S

Parameters

DLIS Name	Description	Value
System and Miscellaneous		
DO	Depth Offset for Playback	-3.4 M
PP	Playback Processing	NORMAL

Format: CCLLog Vertical Scale: 1:200 Graphics File Created: 12-Aug-2007 01:41

OP System Version: 15C0-309

MCM

SHM_GUN 15C0-309 UPCT-A 15C0-309

Input DLIS Files

DEFAULT PERFO_021LUP FN:29 PRODUCER 12-Aug-2007 01:33 4285.0 M 4230.0 M

Output DLIS Files

DEFAULT PERFO_021PUP FN:30 PRODUCER 12-Aug-2007 01:40

Schlumberger

GR-CCL # 2 Correlation

MAXIS Field Log

Company: Esso Australia Pty Ltd

Well: FTA A10A ST1

Input DLIS Files

DEFAULT PERFO_017LUP FN:19 PRODUCER 11-Aug-2007 20:56 4336.1 M 4231.5 M

Output DLIS Files

DEFAULT PERFO_017PUP FN:25 PRODUCER 11-Aug-2007 23:05 4332.4 M 4228.3 M

OP System Version: 15C0-309

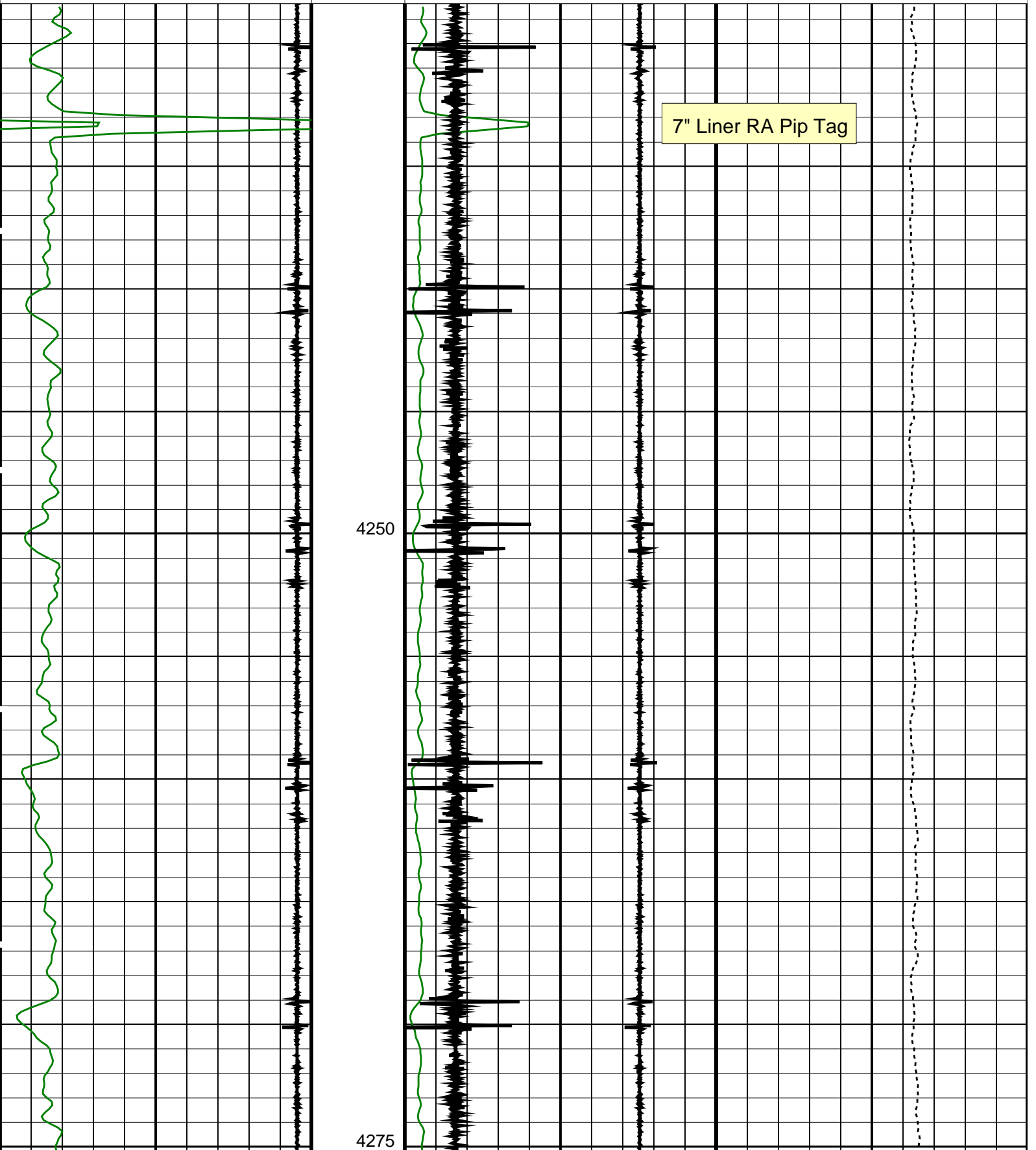
MCM

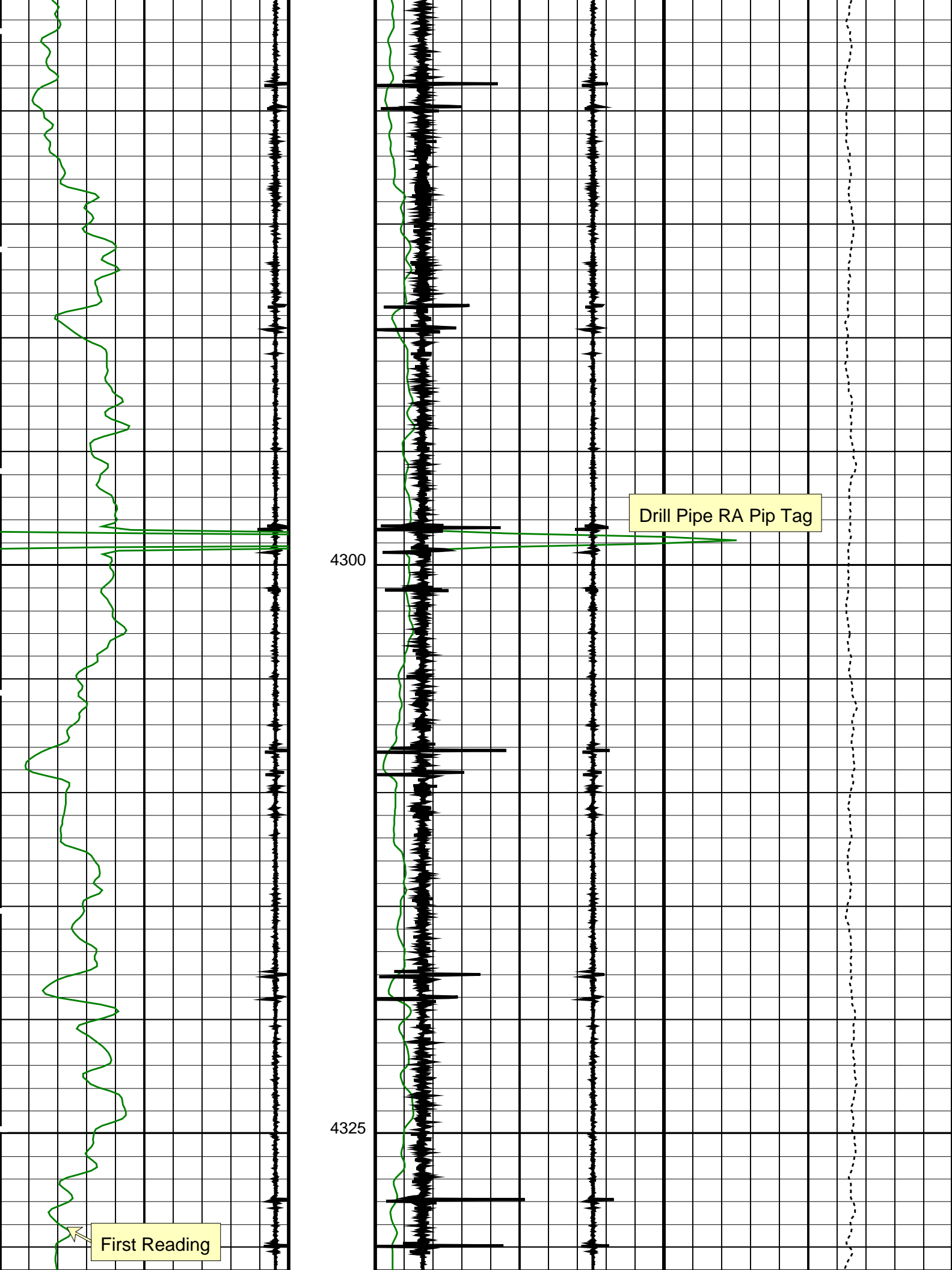
SHM_GUN 15C0-309 UPCT-A 15C0-309



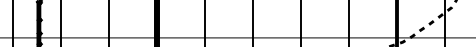
PIP SUMMARY

Time Mark Every 60 S

		Shifted Casing Collar Locator (SCCL)			
		-10	(----	10	
Casing Collar Locator (CCL)		Raw Casing Collar Locator (RCCL)		Tension (TENS)	
-19		-3		0	5000
		(----		(LBF)	
Gamma Ray (GR)		Gamma Ray (GR)			
0		0			
(GAPI)		(GAPI)			
150		1000			





																													
Gamma Ray (GR)										Gamma Ray (GR)																			
0 (GAPI) 150										0 (GAPI) 1000																			
Casing Collar Locator (CCL)										Raw Casing Collar Locator (RCCL)										Tension (TENS)									
-19 (----) 1										-3 (----) 17										0 (LBF) 5000									
										Shifted Casing Collar Locator (SCCL)																			
										-10 (----) 10																			

PIP SUMMARY									
Time Mark Every 60 S									

Parameters									
DLIS Name		Description				Value			
		System and Miscellaneous							
DO		Depth Offset for Playback				-3.7	M		
PP		Playback Processing				NORMAL			
Format: CCLLog		Vertical Scale: 1:200				Graphics File Created: 11-Aug-2007 23:05			
OP System Version: 15C0-309									
MCM									
SHM_GUN		15C0-309		UPCT-A		15C0-309			
Input DLIS Files									
DEFAULT		PERFO_017LUP		FN:19	PRODUCER	11-Aug-2007 20:56	4336.1 M	4231.5 M	
Output DLIS Files									
DEFAULT		PERFO_017PUP		FN:25	PRODUCER	11-Aug-2007 23:05			

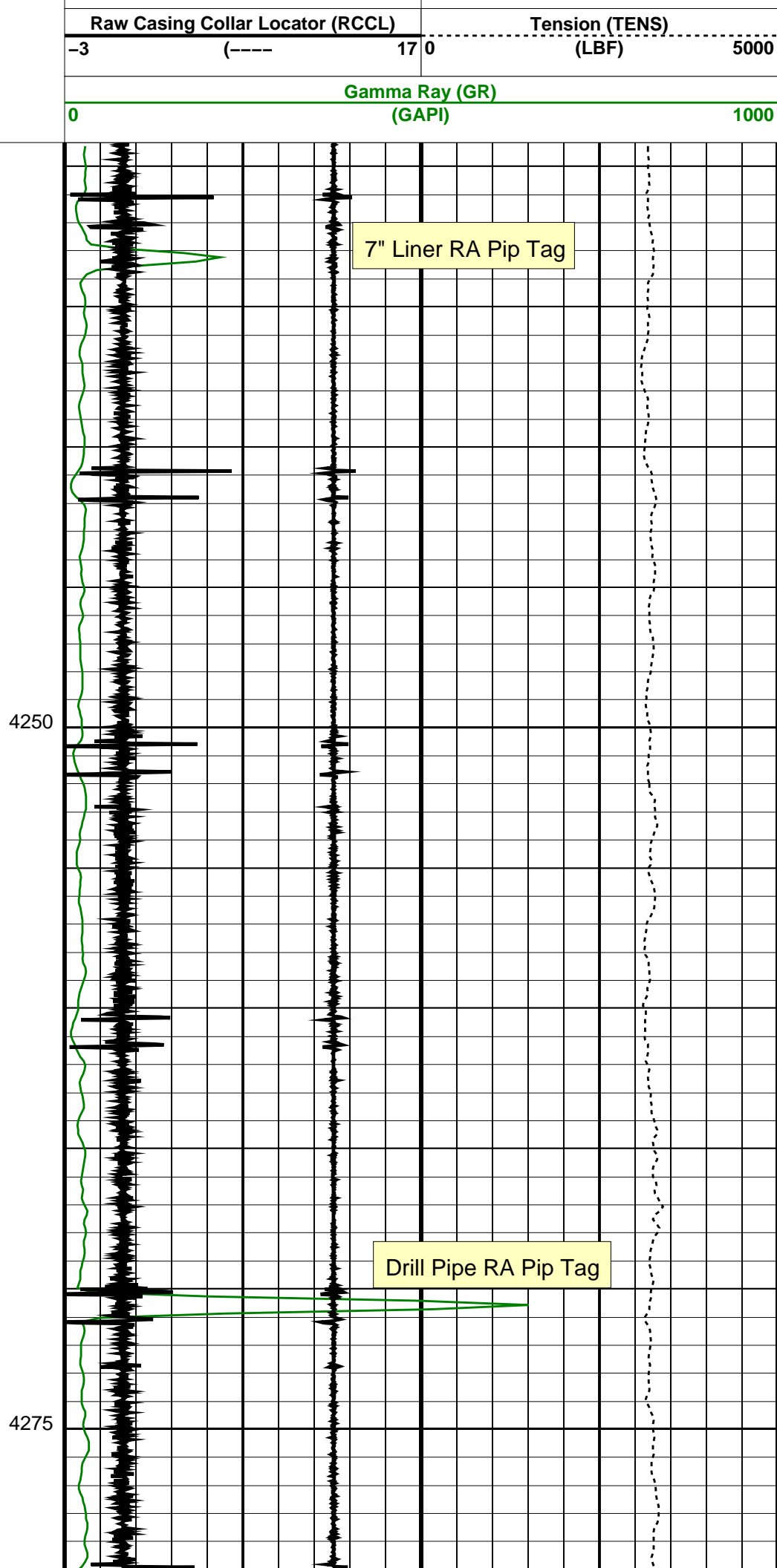
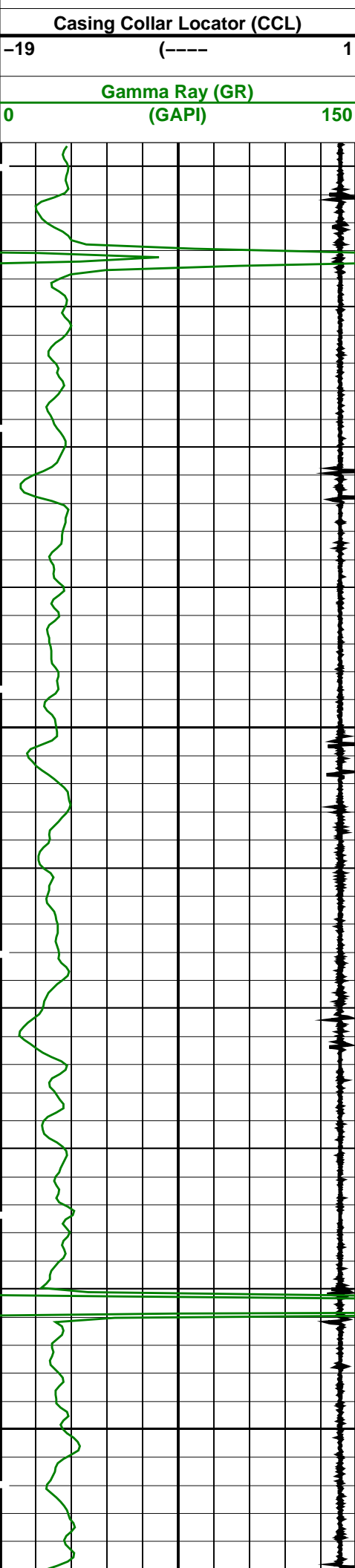
Schlumberger

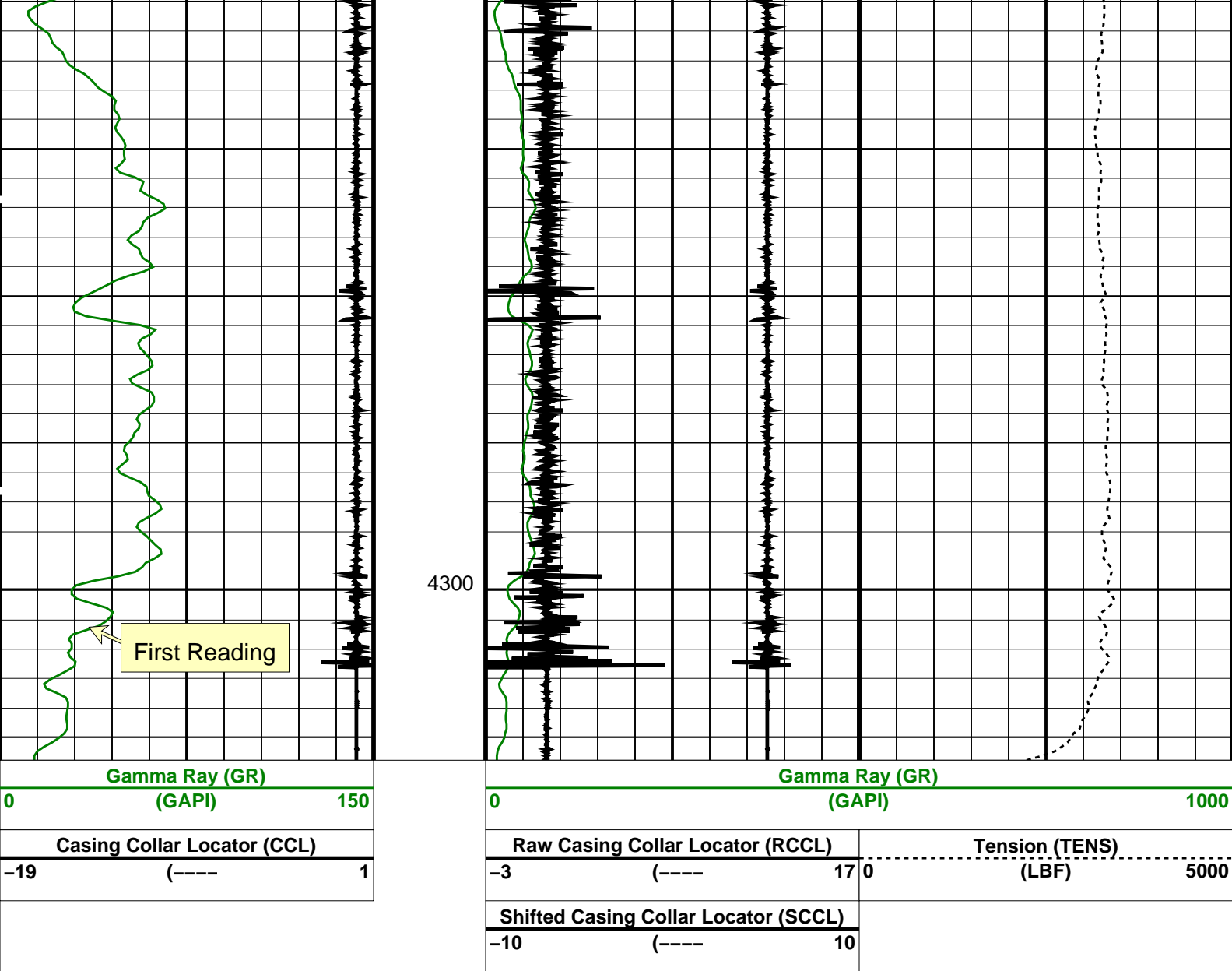
GR-CCL # 1
Correlation

MAXIS Field Log

Company: Esso Australia Pty Ltd					Well: FTA A10A ST1	
Input DLIS Files						
DEFAULT	PERFO_009LUP	FN:8	PRODUCER	11-Aug-2007 15:09	4309.1 M	4232.0 M
Output DLIS Files						
DEFAULT	PERFO_009PUP	FN:26	PRODUCER	11-Aug-2007 23:09	4305.8 M	4229.1 M
OP System Version: 15C0-309						
MCM						
SHM_GUN	15C0-309	UPCT-A		15C0-309		
PIP SUMMARY						
Time Mark Every 60 S						

Shifted Casing Collar Locator (SCCL)									
-10	(-----)				10				





PIP SUMMARY

Time Mark Every 60 S

Parameters

DLIS Name	Description	Value
DO	System and Miscellaneous	
PP	Depth Offset for Playback	-3.3 M
	Playback Processing	NORMAL

Format: CCLLog Vertical Scale: 1:200 Graphics File Created: 11-Aug-2007 23:09

OP System Version: 15C0-309

MCM

SHM_GUN 15C0-309 UPCT-A 15C0-309

Input DLIS Files

DEFAULT PERFO_009LUP FN:8 PRODUCER 11-Aug-2007 15:09 4309.1 M 4232.0 M

Output DLIS Files

DEFAULT PERFO_009PUP FN:26 PRODUCER 11-Aug-2007 23:09

Company: Esso Australia Pty Ltd.

Schlumberger

Well: **FTA A10A ST1**
Field: **Fortescue**
Rig: **Nabors Rig 175**
Country: **Australia**

MAXR Setting Correlation
GR-CCL
11-Aug-07