

Company: Esso Australia Pty Ltd.

Well: FLA A6

Field: Flounder

Rig: Prod 3 / Flounder Country: Australia

RST-C
Sigma & IC Log
1-2 Sep 2007

Rig: Prod 3 / Flounder
Field: Flounder
Location: Bass Strait
Well: FLA A6
Company: Esso Australia Pty Ltd.

LOCATION		State: Victoria	Max. Well Deviation 64.49 deg	Longitude 148° 06' 15.1"E	Latitude 38° 18'45.24"S
Bass Strait	Elev.: K.B. 34.2 m				
Gippsland	G.L. -94 m				
Basin	D.F. 34.2 m				
Permanent Datum:	Mean Sea Level	Elev.: 34.2 m			
Log Measured From:	Drill Floor	-34.2 m above Perm. Datum			
Drilling Measured From:	Drill Floor				

Logging Date	1-Sep-2007
Run Number	1
Depth Driller	4220 m
Schlumberger Depth	4117 m
Bottom Log Interval	4113 m
Top Log Interval	4030 m
Casing Fluid Type	Produced Fluids
Salinity	
Density	1 g/cm3
Fluid Level	2253 m
BIT/CASING/TUBING STRING	
Bit Size	8.500 in
From	4065 m
To	4220 m
Casing/Tubing Size	7.000 in
Weight	26 lbm/ft
Grade	N-80
From	3786 m
To	4146 m
Maximum Recorded Temperatures	233 degF
Logger On Bottom	1-Sep-2007
Unit Number	93
Recorded By	C.Rowand, B.Donahoe
Witnessed By	Mr M. Wilson

PVT DATA		Run 1	Run 2	Run
Oil Density				
Water Salinity				
Gas Gravity				
Bo				
Bw				
1/Bg				
Bubble Point Pressure				
Bubble Point Temperature				
Solution GOR				
Maximum Deviation	64.49 deg			
CEMENTING DATA				
Primary/Squeeze	Primary			
Casing String No				
Lead Cement Type				
Volume				
Density				
Water Loss				
Additives				
Tail Cement Type				
Volume				
Density				
Water Loss				
Additives				
Expected Cement Top				
Logging Date				
Run Number				
Depth Driller				
Schlumberger Depth				
Bottom Log Interval				
Top Log Interval				
Casing Fluid Type				
Salinity				
Density				
Fluid Level				
BIT/CASING/TUBING STRING				
Bit Size				
From				
To				
Casing/Tubing Size				
Weight				
Grade				
From				
To				
Maximum Recorded Temperatures				
Logger On Bottom				
Unit Number				
Recorded By				
Witnessed By				

DEPTH SUMMARY LISTING

Date Created: 2-SEP-2007 10:56:07

Depth System Equipment

Depth Measuring Device		Tension Device		Logging Cable	
Type:	IDW-H	Type:	CMTD-B/A	Type:	2-32ZT
Serial Number:	797	Serial Number:	1721	Serial Number:	24016
Calibration Date:	11-May-2007	Calibration Date:	15-Aug-2007	Length:	5230.06 M
Calibrator Serial Number:	1	Calibrator Serial Number:	1173		
Calibration Cable Type:	2-32ZT	Calibration Gain:	0.89	Conveyance Method:	Wireline
Wheel Correction 1:	-3	Calibration Offset:	-731.00	Rig Type:	Offshore_Fixed
Wheel Correction 2:	-1				

Depth Control Parameters

Log Sequence:	Subsequent Log In the Well
Reference Log Name:	Solar Composite Correlation Log
Reference Log Run Number:	
Reference Log Date:	.

Depth Control Remarks

1. Log correlated to Solar Composite Correlation Log (No date) provided by Esso.
2. .
- 3.
- 4.
- 5.
6. Tool zeroed in the Toolcatcher at 3.4 M

DISCLAIMER

THE USE OF AND RELIANCE UPON THIS RECORDED-DATA BY THE HEREIN NAMED COMPANY (AND ANY OF ITS AFFILIATES, PARTNERS, REPRESENTATIVES, AGENTS, CONSULTANTS AND EMPLOYEES) IS SUBJECT TO THE TERMS AND CONDITIONS AGREED UPON BETWEEN SCHLUMBERGER AND THE COMPANY, INCLUDING: (a) RESTRICTIONS ON USE OF THE RECORDED-DATA; (b) DISCLAIMERS AND WAIVERS OF WARRANTIES AND REPRESENTATIONS REGARDING COMPANY'S USE OF AND RELIANCE UPON THE RECORDED-DATA; AND (c) CUSTOMER'S FULL AND SOLE RESPONSIBILITY FOR ANY INFERENCE DRAWN OR DECISION MADE IN CONNECTION WITH THE USE OF THIS RECORDED-DATA.

OTHER SERVICES1		OTHER SERVICES2	
OS1:	PQGP / TEMP	OS1:	
OS2:	2-1/8" Phased	OS2:	
OS3:	Powerjet	OS3:	
OS4:	MPBT	OS4:	
OS5:	Cement Bailers	OS5:	

REMARKS: RUN NUMBER 1

Correlated to Esso Solar Composite Log provided by client.

Objective: to conduct an RST (Sigma mode) over the interval HUD to 4030 m.


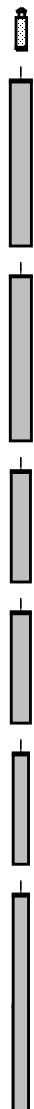
making two passes at 900 ft/hr with the well shut in. Locating formation gas/water contact.

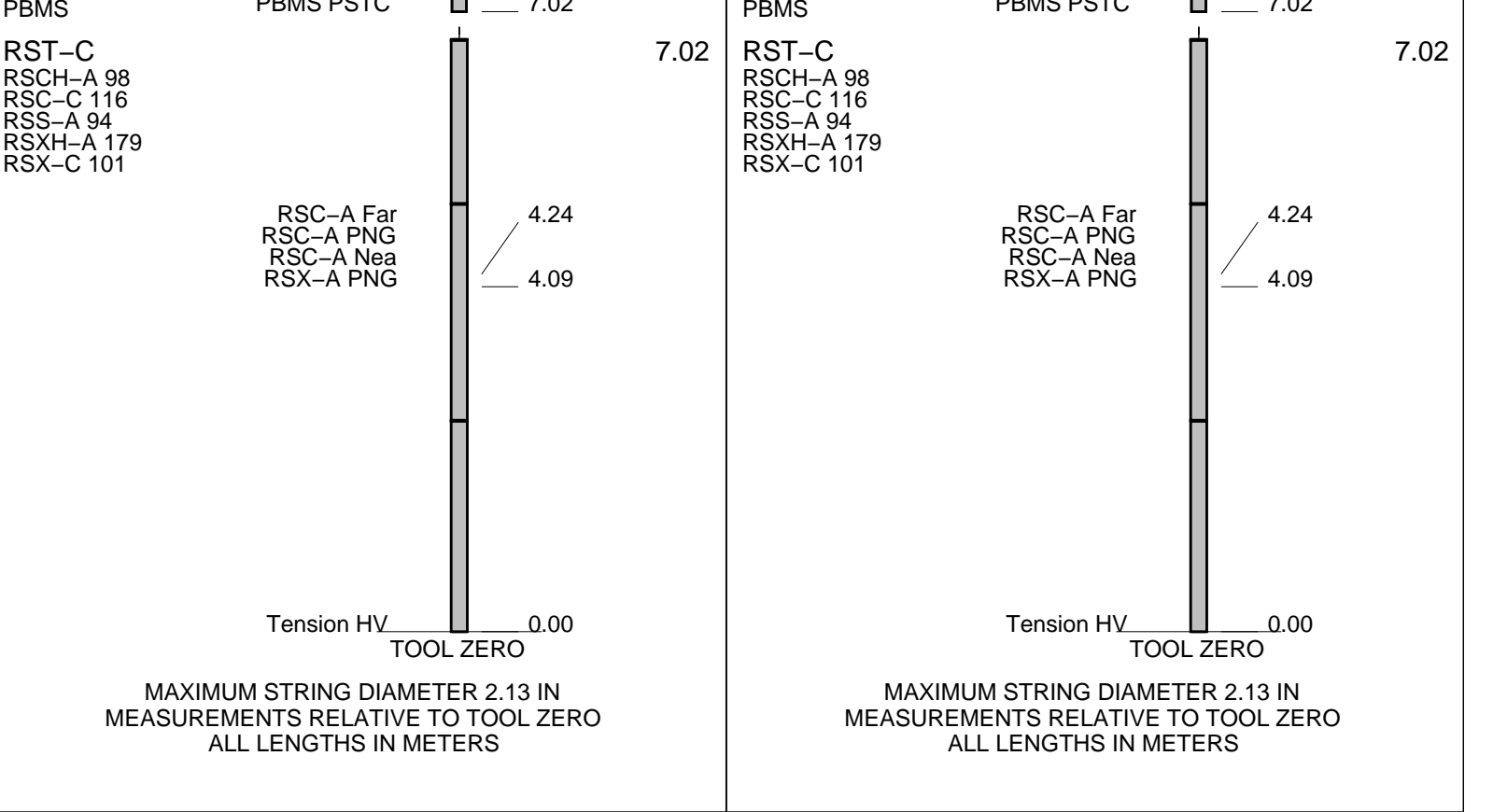
Matrix = Sandstone, BS = 8-1/2" (from HUD to 4065, then 12-1/4" thereafter), CSIZ = 7", CWEI = 26 lb/ft

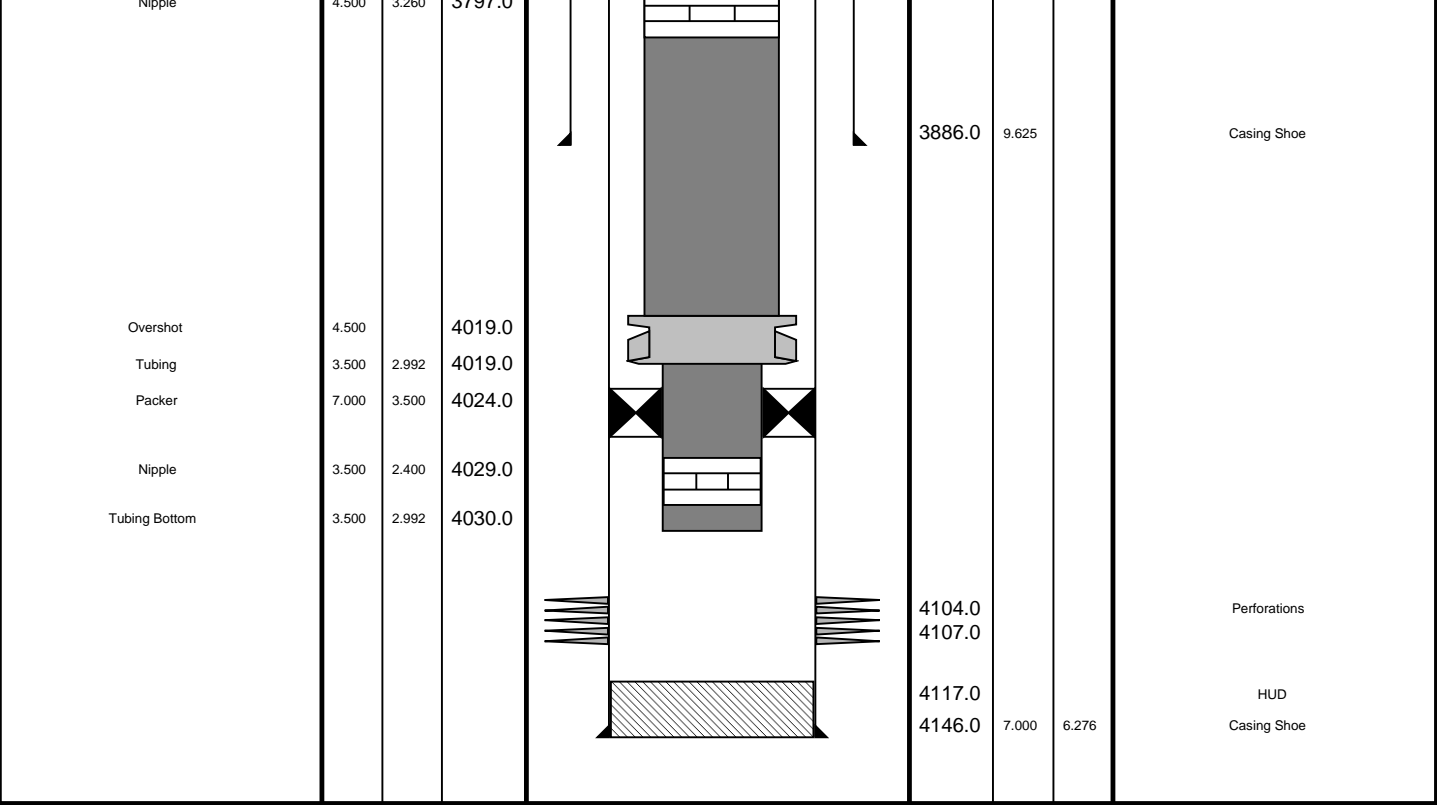
High GR across the perforations

Pressure / Temperature Stations recorded at 4109, 4105, 4102, 4092, 4072 M (Pressure Sensor)

Four Carbon / Oxygen (IC) passes were recorded over the interval 4080–4095 M.

Fluid: Carbon Dioxide (CO2) phases were recorded over the interval 1800 - 1800 m. Well was Shut-In throughout the survey. HUD tagged @ 4117 M. GOC @ 2253 M. OWC @ 2478 M.					
Schlumberger Crew:					
Gary Martin, Craige Harris					
RUN 1			RUN 2		
SERVICE ORDER #: PROGRAM VERSION: FLUID LEVEL:			SERVICE ORDER #: PROGRAM VERSION: FLUID LEVEL:		
15C0-309			2253 m		
LOGGED INTERVAL	START	STOP	LOGGED INTERVAL	START	STOP
EQUIPMENT DESCRIPTION					
RUN 1			RUN 2		
SURFACE EQUIPMENT			SURFACE EQUIPMENT		
WITM-A PSC_16MHZ			WITM-A PSC_16MHZ		
DOWNHOLE EQUIPMENT			DOWNHOLE EQUIPMENT		
MH-22 MH-22 EQF-46 EQF-46 3001 EQF-46 EQF-46 3002 EQF-39 EQF-39 3004 EQF-39 EQF-39 3005 EQF-38 EQF-38 PSPT-A/B PSC-A PSPT-B PSTC 1768 PBMS-B 1747 CQG_F_Mano RTD_Thermometer GR CCL CCL			MH-22 MH-22 EQF-46 EQF-46 3001 EQF-46 EQF-46 3002 EQF-39 EQF-39 3004 EQF-39 EQF-39 3005 EQF-38 EQF-38 PSPT-A/B PSC-A PSPT-B PSTC 1768 PBMS-B 1747 CQG_F_Mano RTD_Thermometer GR CCL CCL		
					
17.36			17.36		
16.88			16.88		
15.05			15.05		
13.23			13.23		
12.00			12.00		
10.77			10.77		
Detail MT TelStatus CTEM — 9.54			Detail MT TelStatus CTEM — 9.54		
9.54			9.54		
8.41			8.41		
7.48			7.48		
7.37			7.37		
7.25			7.25		
7.20			7.20		





IC Pass #4
Carbon / Oxygen

MAXIS Field Log

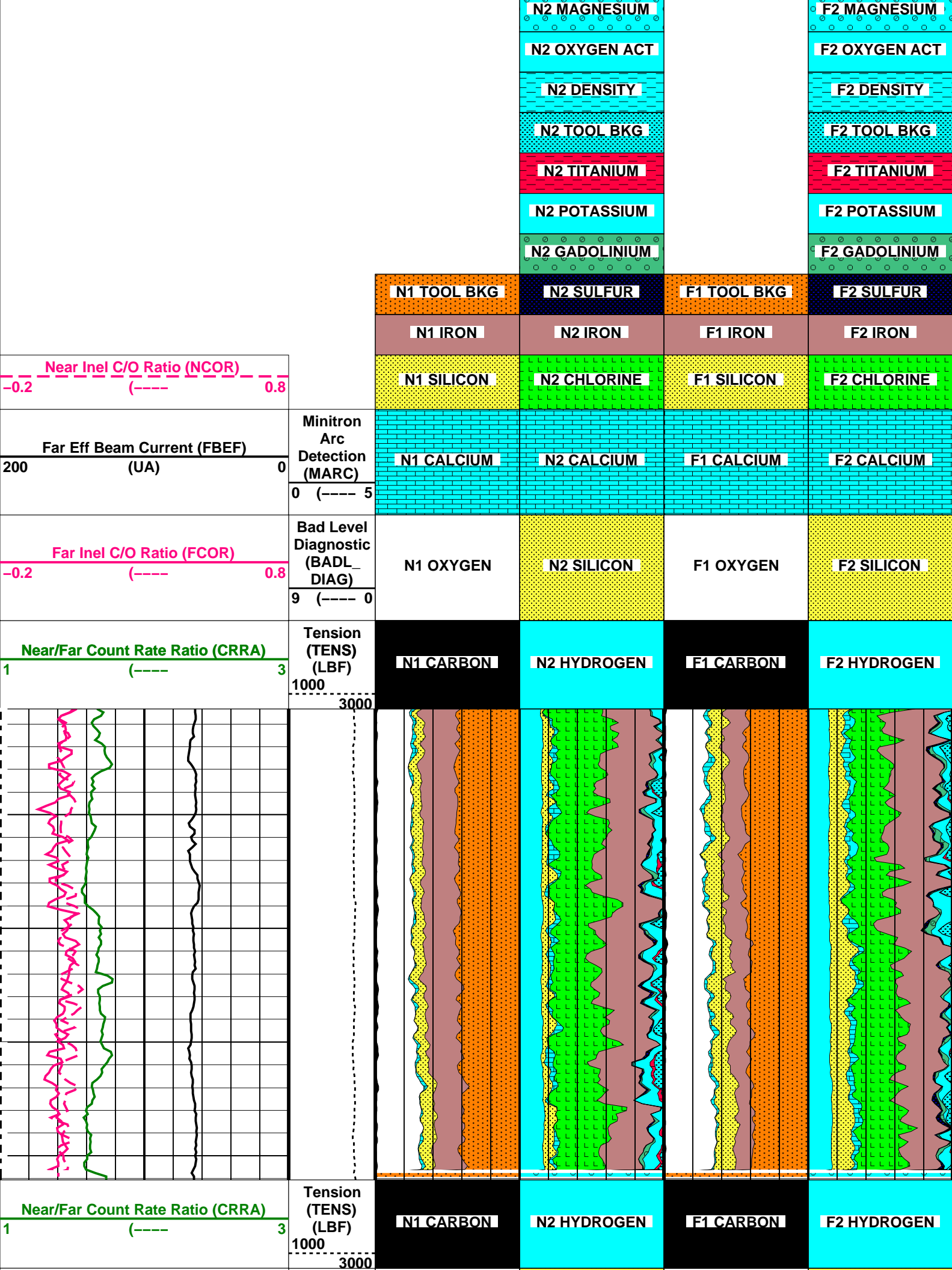
Company: Esso Australia Pty Ltd. Well: FLA A6

Input DLIS Files						
DEFAULT	RST_PSP_040LUP	FN:66	PRODUCER	02-Sep-2007 15:44	4104.6 M	4062.4 M
Output DLIS Files						
DEFAULT	RST_PSP_040PUP	FN:18	PRODUCER	02-Sep-2007 17:01	4096.1 M	4075.3 M

OP System Version: 15C0-309						
MCM						
RST-C	SRPC-3357-Q2_2007	PSPT-A/B		SRPC-3357-Q2_2007		

PIP SUMMARY

Time Mark Every 60 S



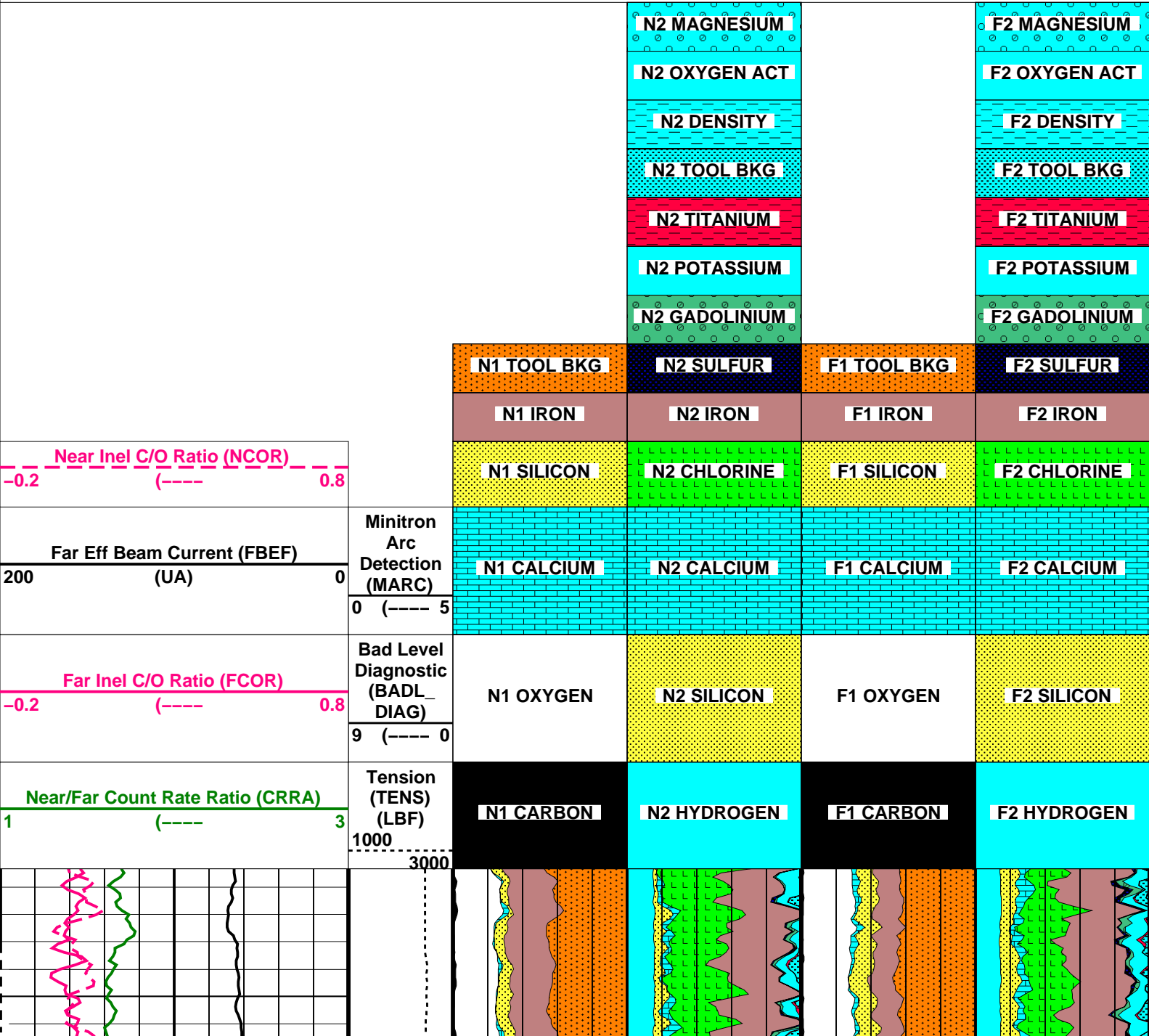
<div>Far Inel C/O Ratio (FCOR)</div> <div>-0.2 (---- 0.8)</div>	<div>Bad Level Diagnostic (BADL_DIAG)</div> <div>9 (---- 0)</div>	N1 OXYGEN	N2 SILICON	F1 OXYGEN	F2 SILICON
<div>Far Eff Beam Current (FBEF)</div> <div>200 (UA) 0</div>	<div>Minitron Arc Detection (MARC)</div> <div>0 (---- 5)</div>	N1 CALCIUM	N2 CALCIUM	F1 CALCIUM	F2 CALCIUM
<div>Near Inel C/O Ratio (NCOR)</div> <div>-0.2 (---- 0.8)</div>		N1 SILICON	N2 CHLORINE	F1 SILICON	F2 CHLORINE
		N1 IRON	N2 IRON	F1 IRON	F2 IRON
		N1 TOOL BKG	N2 SULFUR	F1 TOOL BKG	F2 SULFUR
			N2 GADOLINIUM		F2 GADOLINIUM
			N2 POTASSIUM		F2 POTASSIUM
			N2 TITANIUM		F2 TITANIUM
			N2 TOOL BKG		F2 TOOL BKG
			N2 DENSITY		F2 DENSITY
			N2 OXYGEN ACT		F2 OXYGEN ACT
			N2 MAGNESIUM		F2 MAGNESIUM

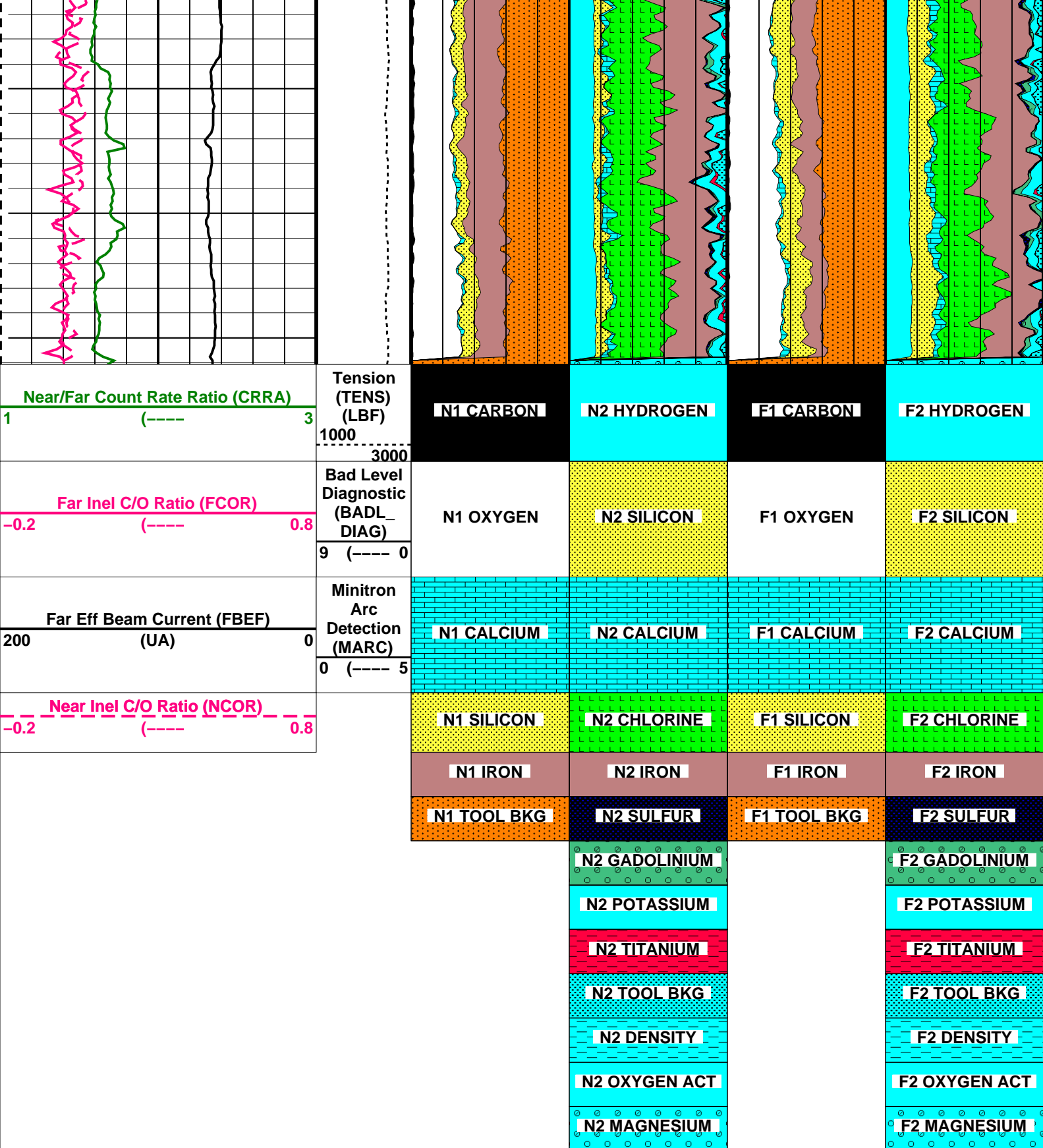
PIP SUMMARY						
Time Mark Every 60 S						
Parameters						
DLIS Name		Description		Value		
TIER_IC	RST-C: Reservoir Saturation Pro Tool C		RST IC Acquisition Mode		0_CO_Yield_and_Spectrolith	
DO	System and Miscellaneous				0.6	M
PP	Depth Offset for Playback				NORMAL	
PP		Playback Processing				
Format: RST_YIELDS		Vertical Scale: 1:200		Graphics File Created: 02-Sep-2007 17:01		
OP System Version: 15C0-309						
MCM						
RST-C	SRPC-3357-Q2_2007		PSPT-A/B		SRPC-3357-Q2_2007	
Input DLIS Files						
DEFAULT	RST_PSP_040LUP		FN:66	PRODUCER	02-Sep-2007 15:44	4104.6 M 4062.4 M
Output DLIS Files						
DEFAULT	RST_PSP_040PUP		FN:18	PRODUCER	02-Sep-2007 17:01	

Company: Esso Australia Pty Ltd.						Well: FLA A6	
Input DLIS Files							
DEFAULT	RST_PSP_039LUP	FN:65	PRODUCER	02-Sep-2007 14:57	4105.4 M	4072.6 M	
Output DLIS Files							
DEFAULT	RST_PSP_039PUP	FN:17	PRODUCER	02-Sep-2007 15:46	4096.1 M	4075.3 M	
OP System Version: 15C0-309							
MCM							
RST-C	SRPC-3357-Q2_2007	PSPT-A/B		SRPC-3357-Q2_2007			

PIP SUMMARY

Time Mark Every 60 S





PIP SUMMARY

☐ Time Mark Every 60 S

Parameters		
DLIS Name	Description	Value
RST-C:	Reservoir Saturation Pro Tool C	
TIER_IC	RST IC Acquisition Mode	0_CO_Yield_and_Spectrolith
DO	System and Miscellaneous	
PP	Depth Offset for Playback	0.4 M
	Playback Processing	NORMAL

OP System Version: 15C0-309						
MCM						
RST-C	SRPC-3357-Q2_2007	PSPT-A/B		SRPC-3357-Q2_2007		
Input DLIS Files						
DEFAULT	RST_PSP_039LUP	FN:65	PRODUCER	02-Sep-2007 14:57	4105.4 M	4072.6 M
Output DLIS Files						
DEFAULT	RST_PSP_039PUP	FN:17	PRODUCER	02-Sep-2007 15:46		



IC Pass #2
Carbon / Oxygen

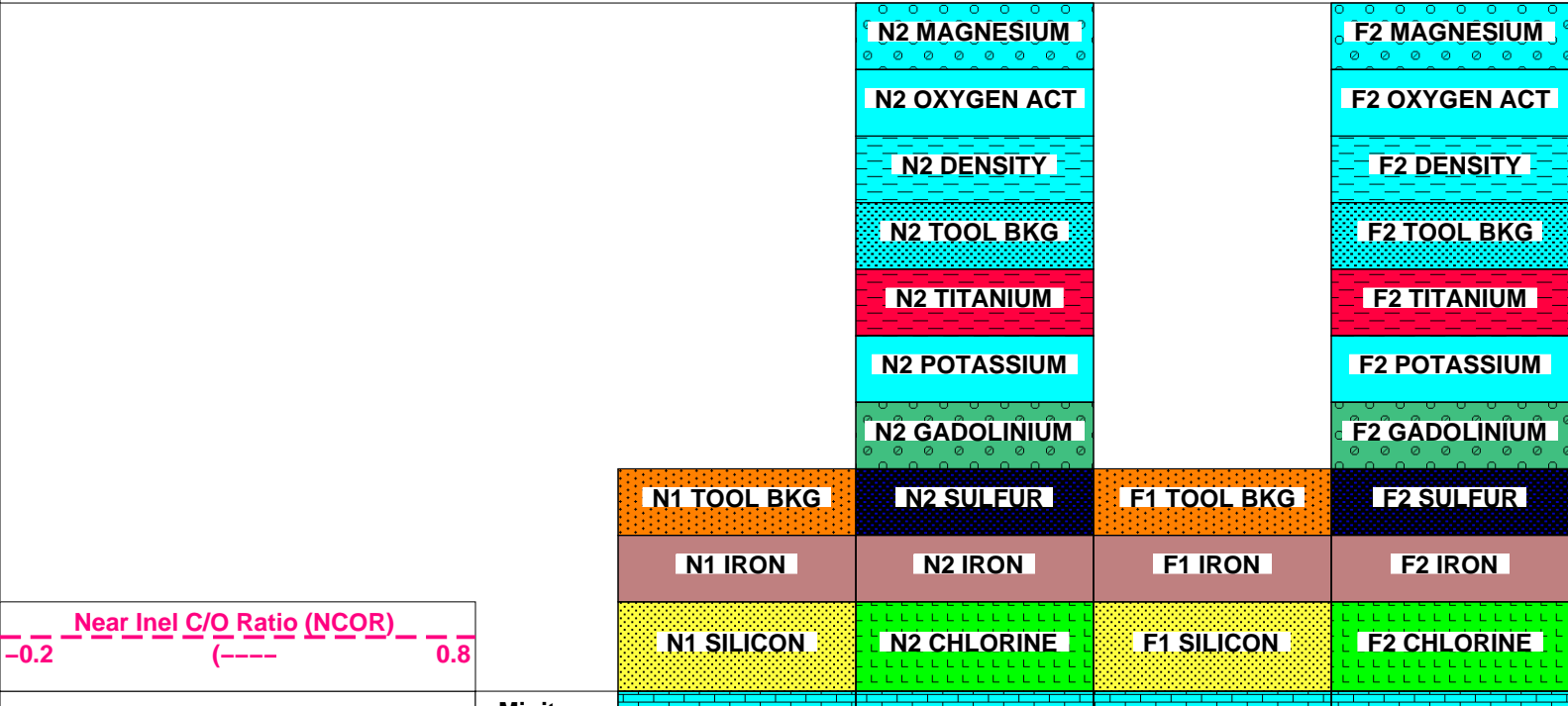
MAXIS Field Log

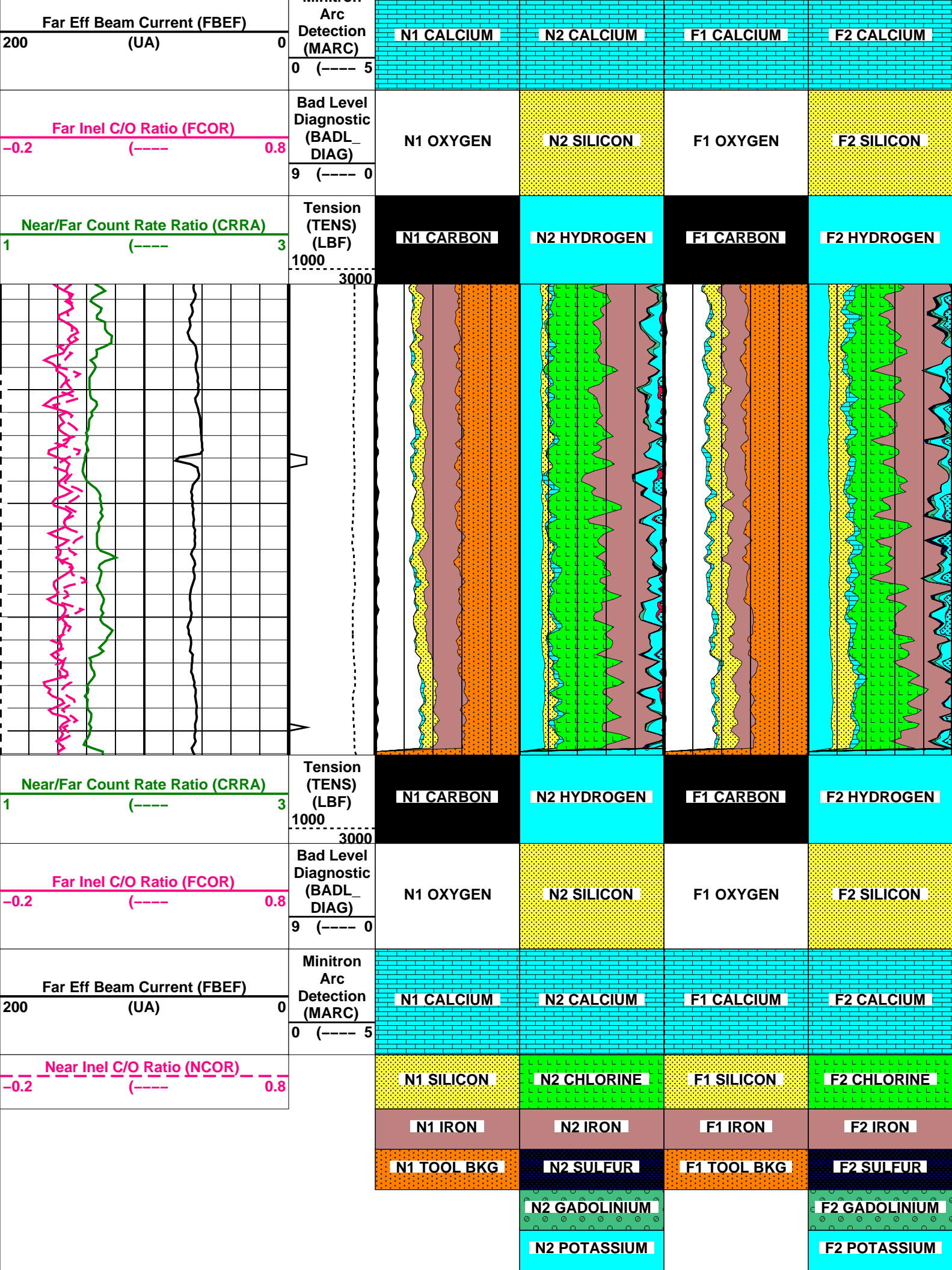
Company: Esso Australia Pty Ltd. Well: FLA A6

Input DLIS Files					
DEFAULT	RST_PSP_038LUP	FN:64	PRODUCER	02-Sep-2007 14:11	4105.0 M 4073.2 M
Output DLIS Files					
DEFAULT	RST_PSP_038PUP	FN:16	PRODUCER	02-Sep-2007 15:09	4096.1 M 4075.3 M

OP System Version: 15C0-309					
MCM					
RST-C	SRPC-3357-Q2_2007	PSPT-A/B		SRPC-3357-Q2_2007	

PIP SUMMARY
Time Mark Every 60 S





	N2 TITANIUM	F2 TITANIUM
	N2 TOOL BKG	F2 TOOL BKG
	N2 DENSITY	F2 DENSITY
	N2 OXYGEN ACT	F2 OXYGEN ACT
	N2 MAGNESIUM	F2 MAGNESIUM

PIP SUMMARY		
Time Mark Every 60 S		

Parameters		
DLIS Name	Description	Value
RST-C: Reservoir Saturation Pro Tool C		
TIER_IC	RST IC Acquisition Mode	0_CO_Yield_and_Spectrolith
	System and Miscellaneous	
DO	Depth Offset for Playback	0.4 M
PP	Playback Processing	NORMAL

Format: RST_YIELDS	Vertical Scale: 1:200	Graphics File Created: 02-Sep-2007 15:09
--------------------	-----------------------	--

OP System Version: 15C0-309			
MCM			
RST-C	SRPC-3357-Q2_2007	PSPT-A/B	SRPC-3357-Q2_2007

Input DLIS Files						
DEFAULT	RST_PSP_038LUP	FN:64	PRODUCER	02-Sep-2007 14:11	4105.0 M	4073.2 M
Output DLIS Files						
DEFAULT	RST_PSP_038PUP	FN:16	PRODUCER	02-Sep-2007 15:09		

Schlumberger

IC Pass #1

Carbon / Oxygen

MAXIS Field Log

Company: Esso Australia Pty Ltd.	Well: FLA A6
----------------------------------	--------------

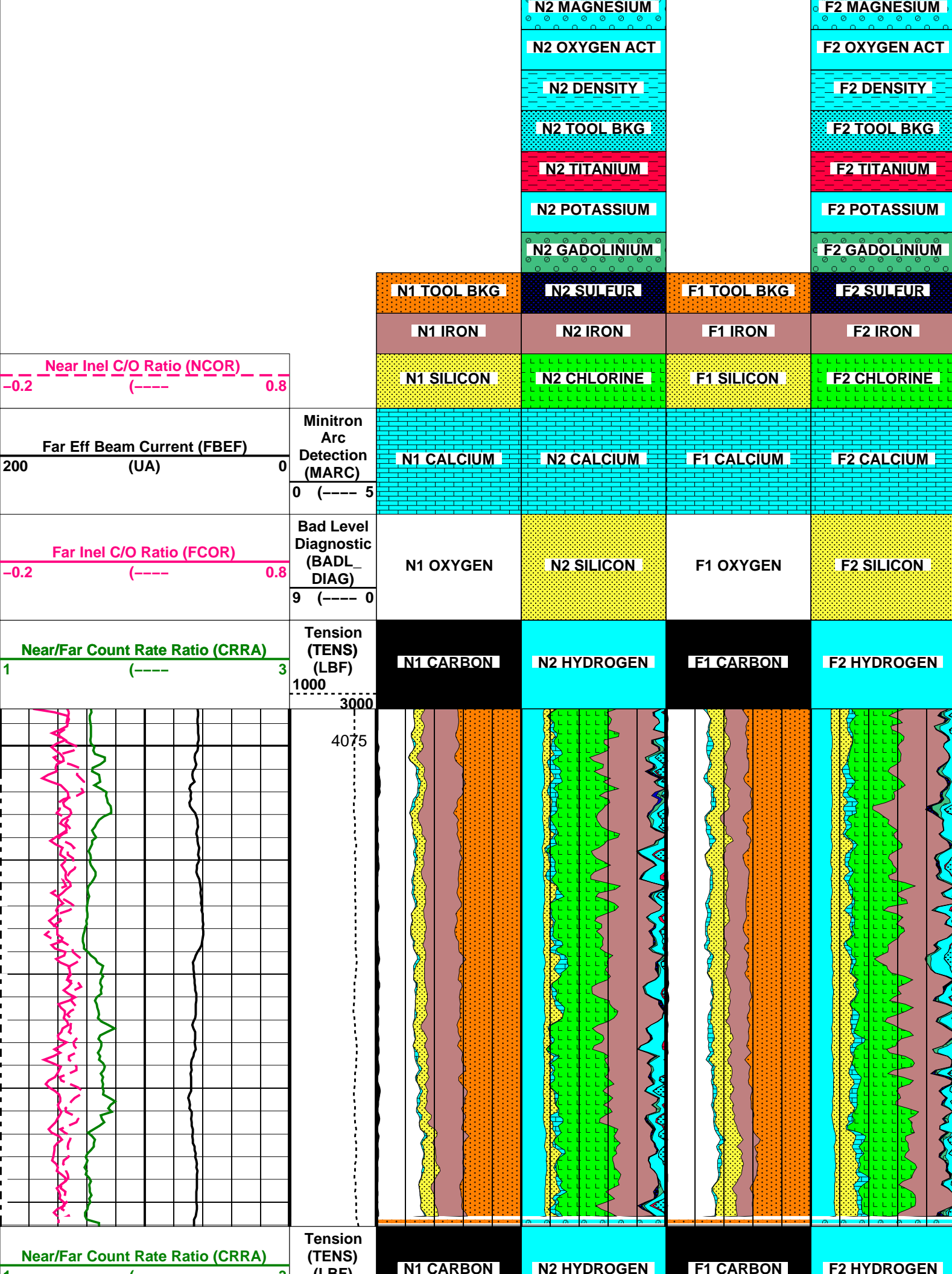
Input DLIS Files						
DEFAULT	RST_PSP_037LUP	FN:63	PRODUCER	02-Sep-2007 13:13	4104.7 M	4070.3 M
Output DLIS Files						
DEFAULT	RST_PSP_037PUP	FN:14	PRODUCER	02-Sep-2007 14:23	4096.1 M	4073.3 M

OP System Version: 15C0-309			
MCM			
RST-C	SRPC-3357-Q2_2007	PSPT-A/B	SRPC-3357-Q2_2007

PIP SUMMARY		
Time Mark Every 60 S		

o o o o o o o

o o o o o o o o



	3 (LBT) 1000				
Far Inel C/O Ratio (FCOR) -0.2 (----) 0.8	Bad Level Diagnostic (BADL_DIAG) 9 (---- 0	N1 OXYGEN	N2 SILICON	F1 OXYGEN	F2 SILICON
Far Eff Beam Current (FBEF) 200 (UA) 0	Minitron Arc Detection (MARC) 0 (---- 5	N1 CALCIUM	N2 CALCIUM	F1 CALCIUM	F2 CALCIUM
Near Inel C/O Ratio (NCOR) -0.2 (----) 0.8		N1 SILICON	N2 CHLORINE	F1 SILICON	F2 CHLORINE
		N1 IRON	N2 IRON	F1 IRON	F2 IRON
		N1 TOOL BKG	N2 SULFUR	F1 TOOL BKG	F2 SULFUR
			N2 GADOLINIUM		F2 GADOLINIUM
			N2 POTASSIUM		F2 POTASSIUM
			N2 TITANIUM		F2 TITANIUM
			N2 TOOL BKG		F2 TOOL BKG
			N2 DENSITY		F2 DENSITY
			N2 OXYGEN ACT		F2 OXYGEN ACT
			N2 MAGNESIUM		F2 MAGNESIUM

PIP SUMMARY

Time Mark Every 60 S

Parameters						
DLIS Name		Description			Value	
TIER_IC	RST-C: Reservoir Saturation Pro Tool C RST IC Acquisition Mode System and Miscellaneous			0_CO_Yield_and_Spectrolith		
DO	Depth Offset for Playback			0.3	M	
PP	Playback Processing			NORMAL		
Format: RST_YIELDS		Vertical Scale: 1:200		Graphics File Created: 02-Sep-2007 14:23		
OP System Version: 15C0-309						
MCM						
RST-C	SRPC-3357-Q2_2007		PSPT-A/B	SRPC-3357-Q2_2007		
Input DLIS Files						
DEFAULT	RST_PSP_037LUP	FN:63	PRODUCER	02-Sep-2007 13:13	4104.7 M	4070.3 M
Output DLIS Files						
DEFAULT	RST_PSP_037PUP	FN:14	PRODUCER	02-Sep-2007 14:23		

MAXIS Field Log

Well: FLA A6

Input DLIS Files	
------------------	--

DEFAULT	RST_PSP_028LTP	FN:54	PRODUCER	01-Sep-2007 20:25	4079.4 M	0.9 M
---------	----------------	-------	----------	-------------------	----------	-------

Output DLIS Files							
DEFAULT	RST PSP 028PTP	EN-11	PRODUCER	01-Sep-2007 20:55	4079.4 M	0.9 M	

QB System Version: 15C0_200

OP System Version: 15C0-309
MCM

RS1-C	SRPC-3357-QZ_2007	PSPT-A/B	SRPC-3357-QZ_2007
	Well Pressure (WPRE SI)		Well Temperature (WTEP SI)

Well Pressure (WP RE SL) (PSIA)	Well Temperature (WTEP SL) (DEGF)
Time of Job	Well Pressure (WP RE SL) Well Temperature (WTEP SL)

[illegible]

(5)	Well Pressure (WPRE SI)		Well Temperature (WTEP SI)
-----	--------------------------	--	-----------------------------

OP System Version: 15C0-309

MCM

RST-C

SRPC-3357-Q2 2007

PSPT-A/B

SRPC-3357-Q2 2007

Input DLIS Files

DEFAULT

RST_PSP_028LTP

FN:54

PRODUCER

01-Sep-2007 20:25

4079.4 M

0.9 M

Output DLIS Files

DEFAULT

RST_PSP_028PTP

FN:11

PRODUCER

01-Sep-2007 20:55



Station @ 4092 M (Pressure Sensor)

MAXIS Field Log

Company: Esso Australia Pty Ltd.

Well: FLA A6

Input DLIS Files

DEFAULT

RST PSP 027LTP

FN:53

PRODUCER

01-Sep-2007 20:15

4099.4 M

0.8 M

Output DLIS Files

DEFAULT

RST PSP 027PTP

FN:10

PRODUCER

01-Sep-2007 20:54

4099.4 M

0.8 M

OP System Version: 15C0-309

MCM

RST-C

SRPC-3357-Q2 2007

PSPT-A/B

SRPC-3357-Q2 2007

[illegible]

[illegible]

DEFAULT	RST PSP 025PTP	FN:8	PRODUCER	01-Sep-2007 20:52	4112.3 M	0.8 M
---------	----------------	------	----------	-------------------	----------	-------

OP System Version: 15C0-309

MCM

RST-C

SRPC-3357-Q2_2007

PSPT-A/B

SRPC-3357-Q2_2007

	Well Pressure (WPRE_SL) (PSIA)								Well Temperature (WTEP_SL) (DEGF)							
Time of Job (TOJ) (S)	Well Pressure (WPRE_SL) (PSIA)								Well Temperature (WTEP_SL) (DEGF)							
	3300							3400	230							235
20:05:31					3341.26											233.56
20:05:22					3341.25											233.56
20:05:13					3341.26											233.56
20:05:04					3341.26											233.57
20:04:55					3341.26											233.57
20:04:46					3341.25											233.57
20:04:37					3341.25											233.57
20:04:28					3341.25											233.57
20:04:19					3341.25											233.57
20:04:10					3341.25											233.57
20:04:01					3341.25											233.57
20:03:52					3341.25											233.57
20:03:43					3341.25											233.57
20:03:34					3341.25											233.57
20:03:25					3341.24											233.57
20:03:16					3341.24											233.57
20:03:07					3341.24											233.58
20:02:58					3341.24											233.58
20:02:49					3341.24											233.58
20:02:40					3341.24											233.58
20:02:31					3341.23											233.58
20:02:22					3341.23											233.58
20:02:13					3341.23											233.58
20:02:04					3341.23											233.58
20:01:55					3341.22											233.58
20:01:46					3341.22											233.58
20:01:37					3341.22											233.58
20:01:28					3341.21											233.58
20:01:19					3341.21											233.58
20:01:10					3341.21											233.58
20:01:01					3341.20											233.58
20:00:52					3341.20											233.58
20:00:43					3341.20											233.58
20:00:34					3341.20											233.58
20:00:25					3341.19											233.59
20:00:16					3341.20											233.59

Time of Job (TOJ) (S)	Well Pressure (WPRE_SL) (PSIA)								Well Temperature (WTEP_SL) (DEGF)							
	3300							3400	230							235
	Well Pressure (WPRE_SL) (PSIA)								Well Temperature (WTEP_SL) (DEGF)							

Format: PBMS Station Vertical Scale: 1" per 60S Graphics File Created: 01-Sep-2007 20:52

OP System Version: 15C0-309

MCM

RST-C

SRPC-3357-Q2_2007

PSPT-A/B

SRPC-3357-Q2_2007

Input DLIS Files

DEFAULT RST_PSP_025LTP FN:51 PRODUCER 01-Sep-2007 20:00 4112.3 M 0.8 M

Output DLIS Files

DEFAULT RST_PSP_025PTP FN:8 PRODUCER 01-Sep-2007 20:52

MAXIS Field Log

Company: Esso Australia Pty Ltd. Well: FLA A6

Input DLIS Files

DEFAULT RST_PSP_024LTP FN:50 PRODUCER 01-Sep-2007 19:53 4116.3 M 0.8 M

Output DLIS Files

DEFAULT RST_PSP_024PTP FN:7 PRODUCER 01-Sep-2007 20:51 4116.3 M 0.8 M

OP System Version: 15C0-309

MCM

RST-C SRPC-3357-Q2_2007 PSPT-A/B SRPC-3357-Q2_2007

	Well Pressure (WPRE_SL) (PSIA)										Well Temperature (WTEP_SL) (DEGF)									
Time of Job (TOJ) (S)	Well Pressure (WPRE_SL) (PSIA)										Well Temperature (WTEP_SL) (DEGF)									
	3300								3400		230								235	
19:58:36					3345.39														233.69	
19:58:27					3345.38														233.69	
19:58:18					3345.38														233.69	
19:58:09					3345.38														233.70	
19:58:00					3345.38														233.70	
19:57:51					3345.38														233.70	
19:57:42					3345.37														233.69	
19:57:33					3345.37														233.69	
19:57:24					3345.37														233.70	
19:57:15					3345.37														233.70	
19:57:06					3345.37														233.70	
19:56:57					3345.37														233.70	
19:56:48					3345.36														233.70	
19:56:39					3345.36														233.70	
19:56:30					3345.36														233.70	
19:56:21					3345.36														233.70	
19:56:12					3345.36														233.70	
19:56:03					3345.35														233.70	
19:55:54					3345.35														233.70	
19:55:45					3345.35														233.70	
19:55:36					3345.35														233.70	
19:55:27					3345.34														233.70	
19:55:18					3345.34														233.70	
19:55:09					3345.34														233.70	
19:55:00					3345.34														233.70	
19:54:51					3345.34														233.70	
19:54:42					3345.34														233.70	
19:54:33					3345.34														233.70	
19:54:24					3345.34														233.70	
19:54:15					3345.34														233.70	
19:54:06					3345.34														233.71	
19:53:57					3345.34														233.70	
19:53:48					3345.33														233.70	
Time of Job (TOJ) (S)	Well Pressure (WPRE_SL) (PSIA)										Well Temperature (WTEP_SL) (DEGF)									
	3300								3400		230								235	
	Well Pressure (WPRE_SL) (PSIA)										Well Temperature (WTEP_SL) (DEGF)									

Format: PBMS Station Vertical Scale: 1" per 60S Graphics File Created: 01-Sep-2007 20:51

OP System Version: 15C0-309

MCM

RST-C	SRPC-3357-Q2_2007	PSPT-A/B	SRPC-3357-Q2_2007
Input DLIS Files			
DEFAULT	RST_PSP_024LTP	FN:50	PRODUCER 01-Sep-2007 19:53 4116.3 M 0.8 M
Output DLIS Files			
DEFAULT	RST_PSP_024PTP	FN:7	PRODUCER 01-Sep-2007 20:51

Schlumberger

Merged Sigma Passes

MAXIS Field Log

Company: Esso Australia Pty Ltd. Well: FLA A6

Input DLIS Files			
DEFAULT	RST_PSP_020PUP	FN:1	PRODUCER 01-Sep-2007 19:37 4121.4 M 4028.4 M
DEFAULT	RST_PSP_022PUP	FN:5	PRODUCER 01-Sep-2007 20:02 4120.9 M 4028.4 M
Output DLIS Files			
DEFAULT	RST_PSP_023PUP	FN:6	PRODUCER 01-Sep-2007 20:05 4121.4 M 4028.8 M

OP System Version: 15C0-309
MCM

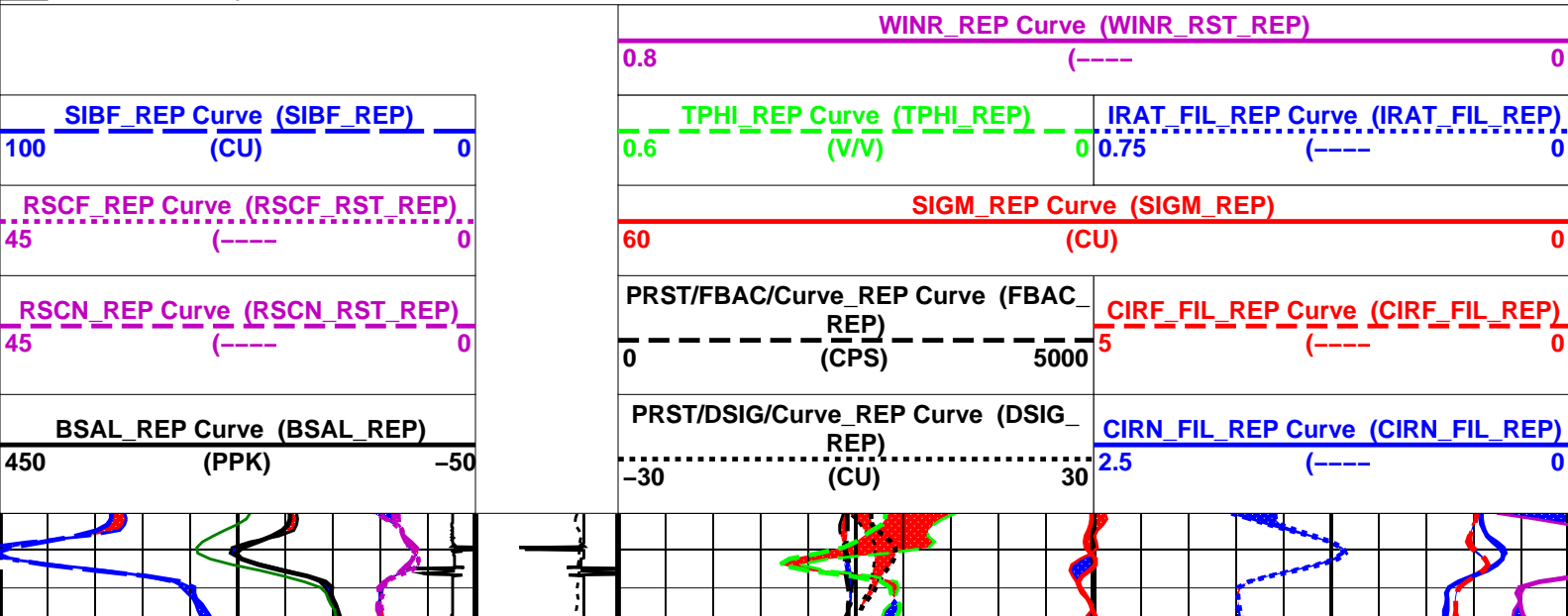
RST-C SRPC-3357-Q2_2007 PSPT-A/B SRPC-3357-Q2_2007

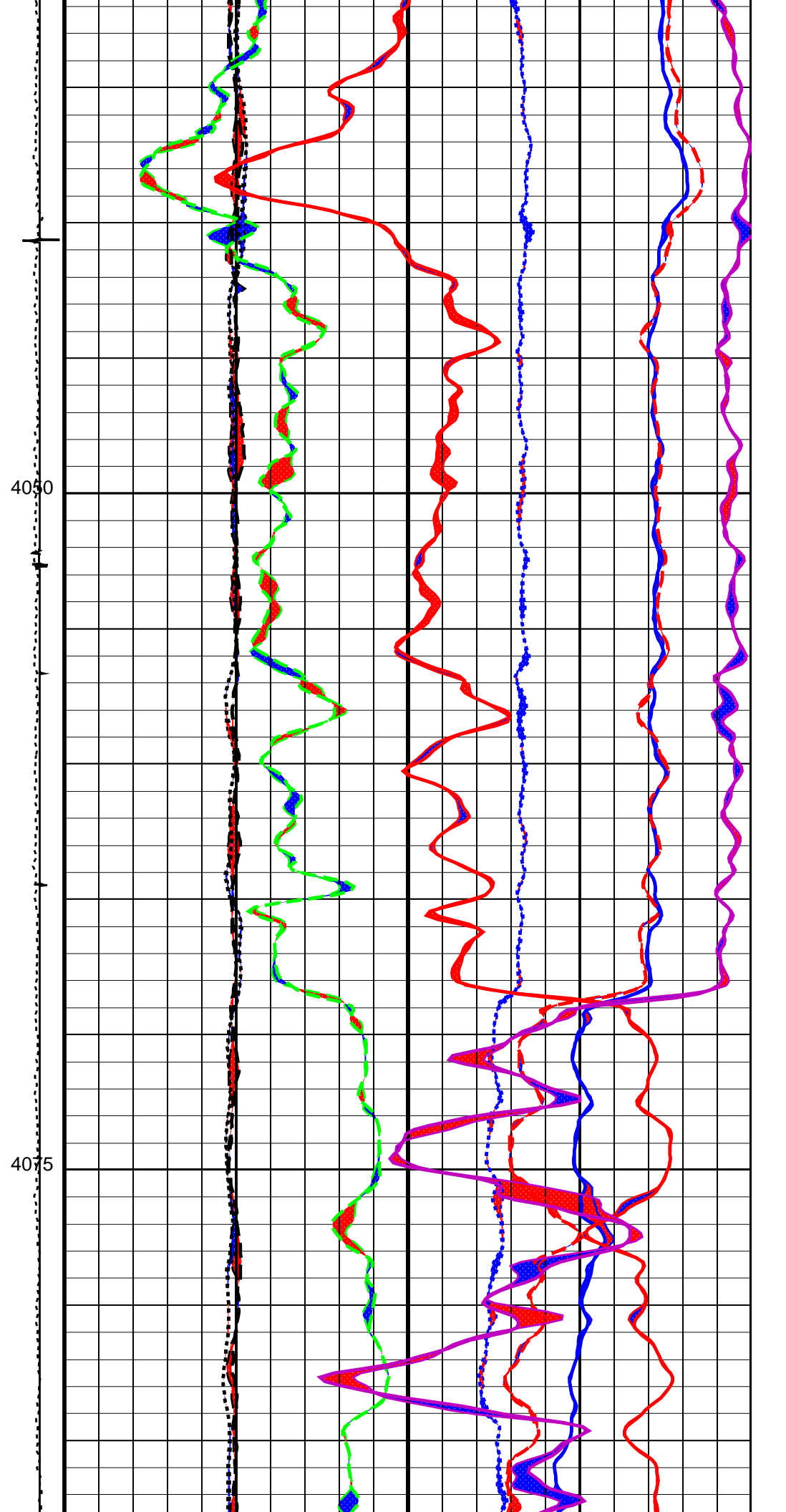
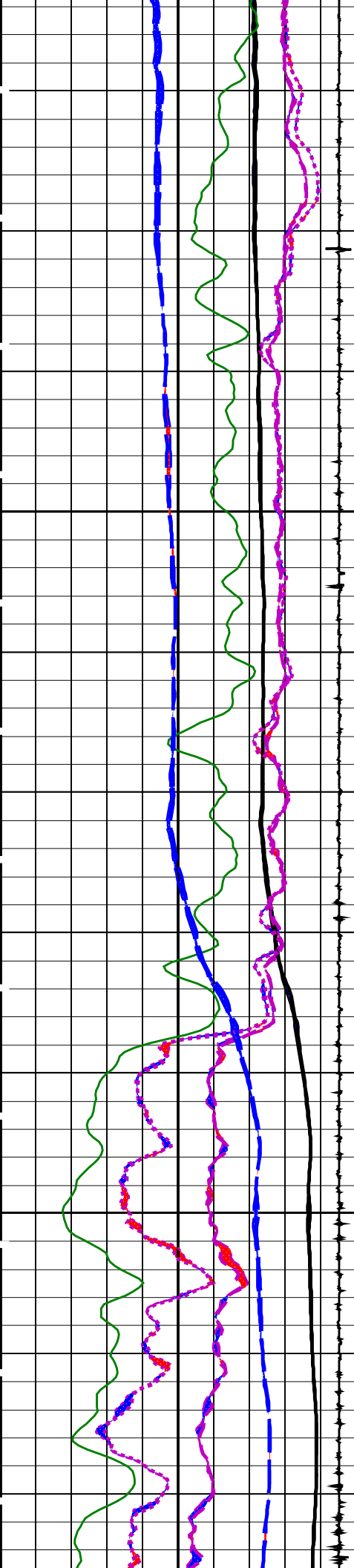
Changed Parameter Summary

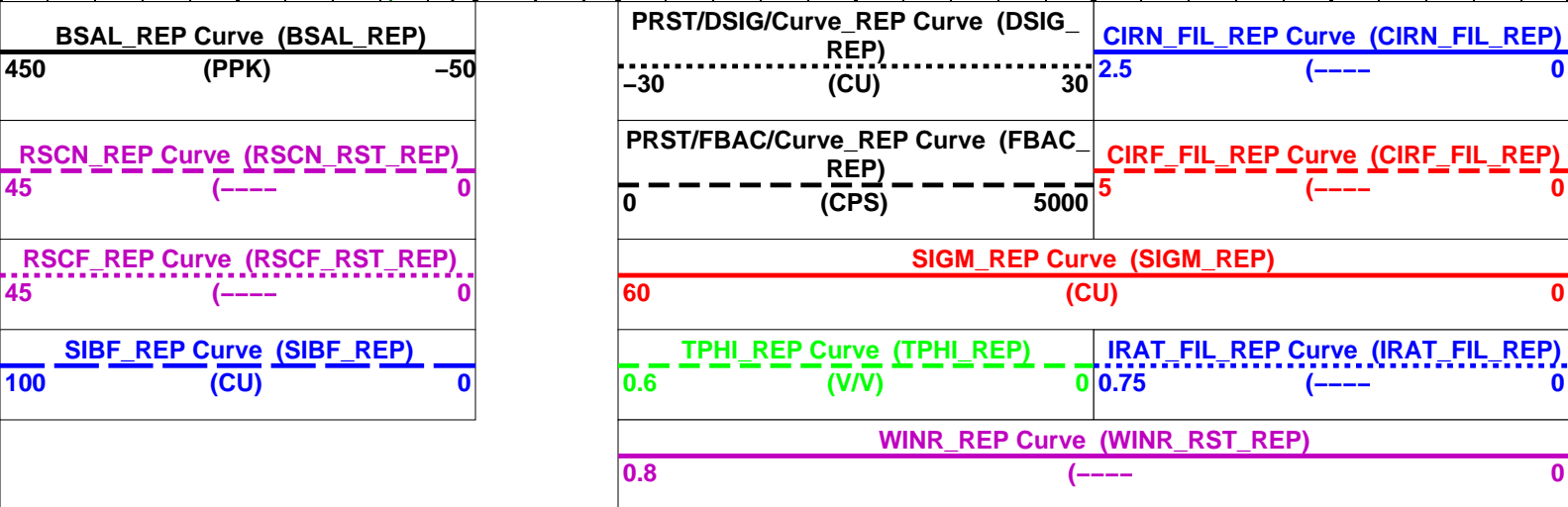
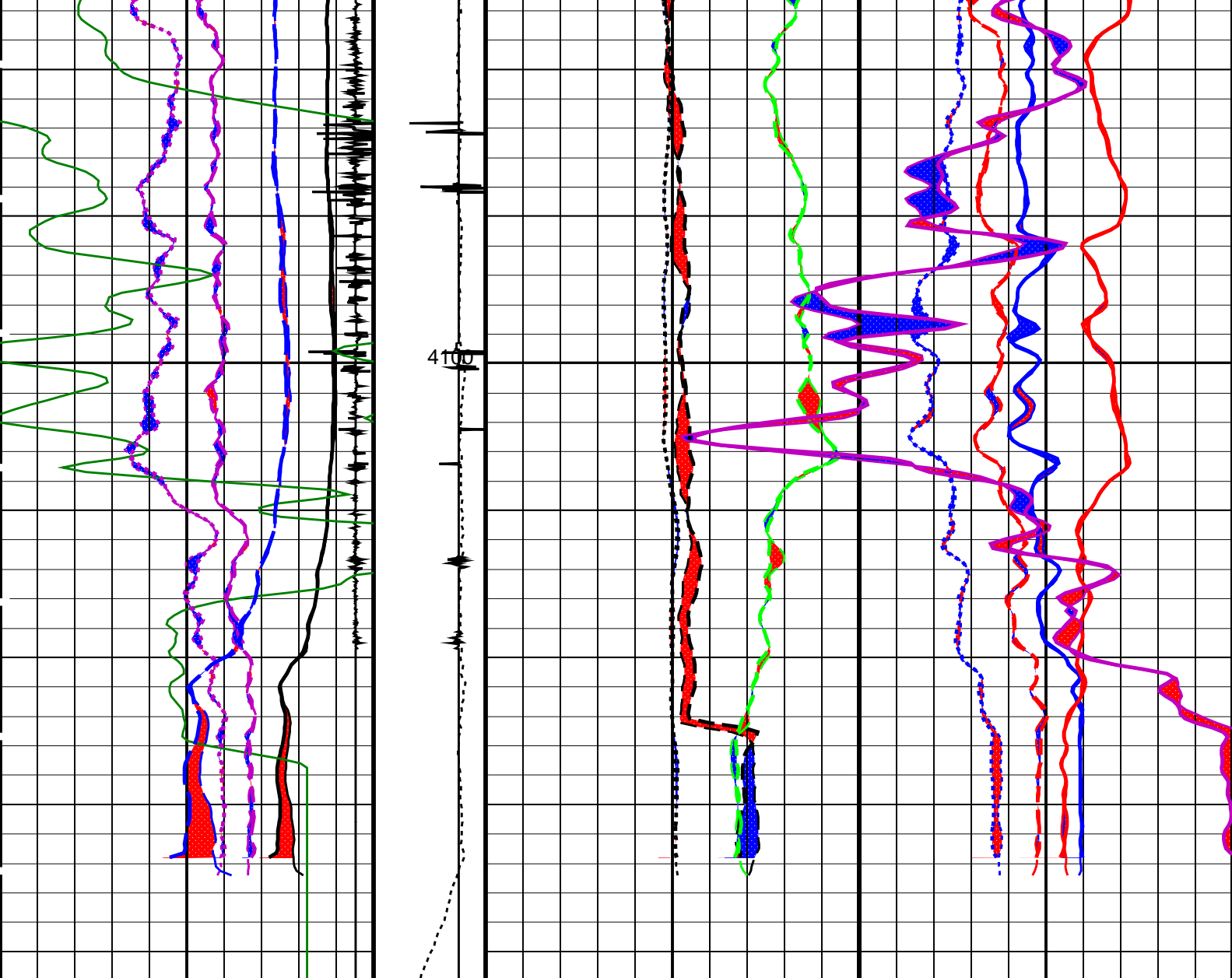
DLIS Name	New Value	Previous Value	Depth & Time
BS	8.500 IN 12.250 IN	12.250 IN 8.500 IN	4121.4 20:05:59 4065.0 20:06:05

PIP SUMMARY

Time Mark Every 60 S







PIP SUMMARY

Time Mark Every 60 S

Parameters

DLIS Name	Description	Value
-----------	-------------	-------

RST-C: Reservoir Saturation Pro Tool C

AIRB	RST Air Borehole	No
BHS	Borehole Status	CASED
BSALOPT	RST Borehole Salinity Option	Unknown
BSFL	RST Borehole Salinity Filter Length	51

DFPC	RST Depth Filter Processing Constant (TDT-like)	One	
DFPC_TDTL		Two	
MATR	Rock Matrix for Neutron Porosity Corrections	SANDSTONE	
NORM_IRAT_RST	RST Normalized Inelastic Ratio	0.48	
NORM_SIGM_RST	RST Normalized Sigma	30	CU
RGAI	Near/Far Gain Calibration Ratio	1	
TIER_SIGM	RST Sigma Acquisition Mode	0_RST_Sigma	
PSPT-A/B: Production Services Logging Platform			
BHS	Borehole Status	CASED	
MATR	Rock Matrix for Neutron Porosity Corrections	SANDSTONE	
System and Miscellaneous			
BS	Bit Size	12.250	IN
BSAL	Borehole Salinity	-50000.00	PPM
DO	Depth Offset for Playback	0.0	M
DORL	Depth Offset for Repeat Analysis	0.0	M
PP	Playback Processing	NORMAL	

Format: RST_SIG_ANSW_REP Vertical Scale: 1:200 Graphics File Created: 01-Sep-2007 20:05

OP System Version: 15C0-309

MCM

RST-C SRPC-3357-Q2_2007 PSPT-A/B SRPC-3357-Q2_2007

Input DLIS Files

DEFAULT	RST_PSP_020PUP	FN:1	PRODUCER	01-Sep-2007 19:37	4121.4 M	4028.4 M
DEFAULT	RST_PSP_022PUP	FN:5	PRODUCER	01-Sep-2007 20:02	4120.9 M	4028.4 M

Output DLIS Files

DEFAULT	RST_PSP_023PUP	FN:6	PRODUCER	01-Sep-2007 20:05
---------	----------------	------	----------	-------------------

Schlumberger

Sigma Pass #2

MAXIS Field Log

Company: Esso Australia Pty Ltd.

Well: FLA A6

Input DLIS Files

DEFAULT	RST_PSP_022LUP	FN:48	PRODUCER	01-Sep-2007 19:24	4120.6 M	4017.9 M
---------	----------------	-------	----------	-------------------	----------	----------

Output DLIS Files

DEFAULT	RST_PSP_022PUP	FN:5	PRODUCER	01-Sep-2007 20:02	4120.9 M	4028.4 M
---------	----------------	------	----------	-------------------	----------	----------

OP System Version: 15C0-309

MCM

RST-C SRPC-3357-Q2_2007 PSPT-A/B SRPC-3357-Q2_2007

Changed Parameter Summary

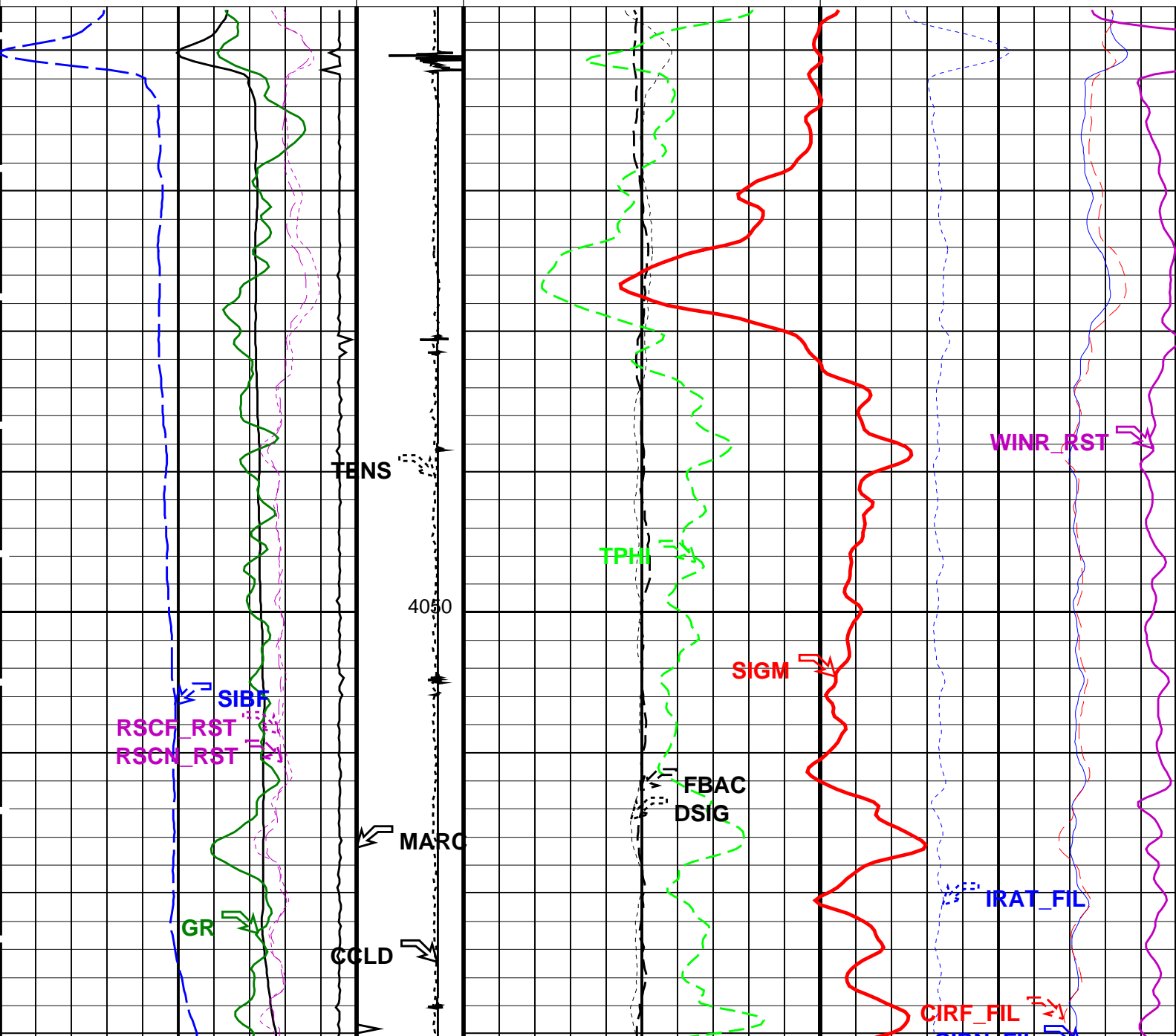
DLIS Name	New Value	Previous Value	Depth & Time
BS	8.500 IN	12.250 IN	4120.9 20:02:59
	12.250 IN	8.500 IN	4065.0 20:03:05

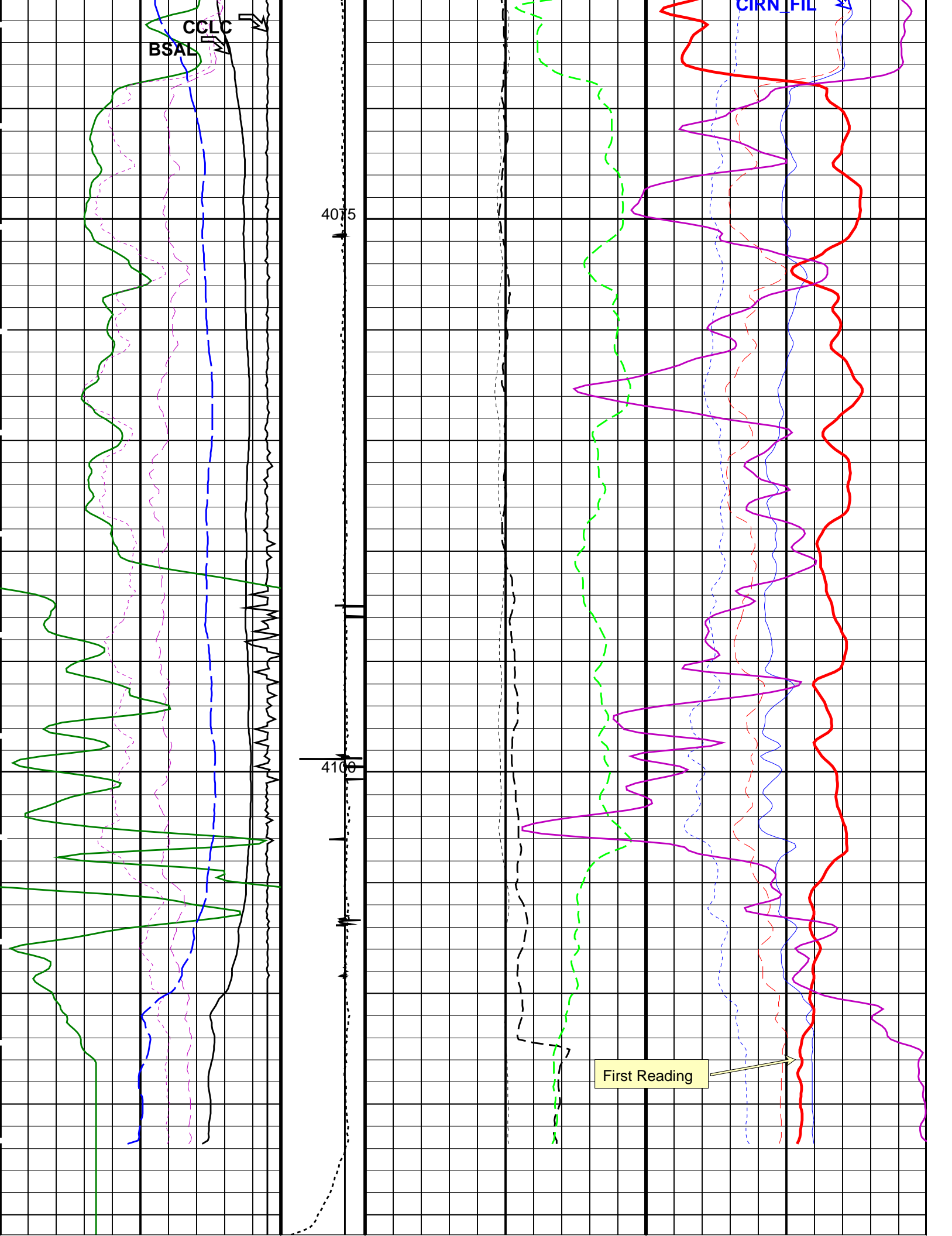
PIP SUMMARY

Time Mark Every 60 S

RST Far Effective Capture CR (RSCF_RST)

45 (-----) 0			
RST Near Effective Capture CR (RSCN_RST) (-----) 0		RST Weighted Inelastic Ratio (WINR_RST) (-----) 0	
45 (-----) 0			
RST Sigma Borehole Fluid (SIBF) (CU) 0		RST Porosity (TPHI) (V/V) 0.6	RST Inelastic Ratio (IRAT_FIL) (-----) 0
			0.75
Gamma Ray (GR) (GAPI) 0 150	Minitron Arc Detection (MARC) 0 (-----) 5	RST Sigma (SIGM) (CU) 60 0	
(CCLC) (V) -19 1	Tension (TENS) (LBF) 1000 3000	MCS Far Background (filtered) (FBAC) (CPS) 0 5000	RST Capture to Inelastic Ratio Far (CIRF_FIL) (-----) 0
			5
RST Borehole Salinity (BSAL) (PPK) 450 -50	Discriminated CCL (CCLD) (V) 3 -1	RST Sigma Difference (DSIG) (CU) -30 30	RST Capture to Inelastic Ratio Near (CIRN_FIL) (-----) 0
			2.5





MAXIS Field Log

Company: Esso Australia Pty Ltd.

Well: FLA A6

Input DLIS Files

DEFAULT	RST_PSP_020LUP	FN:46	PRODUCER	01-Sep-2007 18:56	4120.9 M	4015.0 M
---------	----------------	-------	----------	-------------------	----------	----------

Output DLIS Files

DEFAULT	RST_PSP_020PUP	FN:1	PRODUCER	01-Sep-2007 19:37	4121.4 M	4028.4 M
---------	----------------	------	----------	-------------------	----------	----------

OP System Version: 15C0-309

MCM

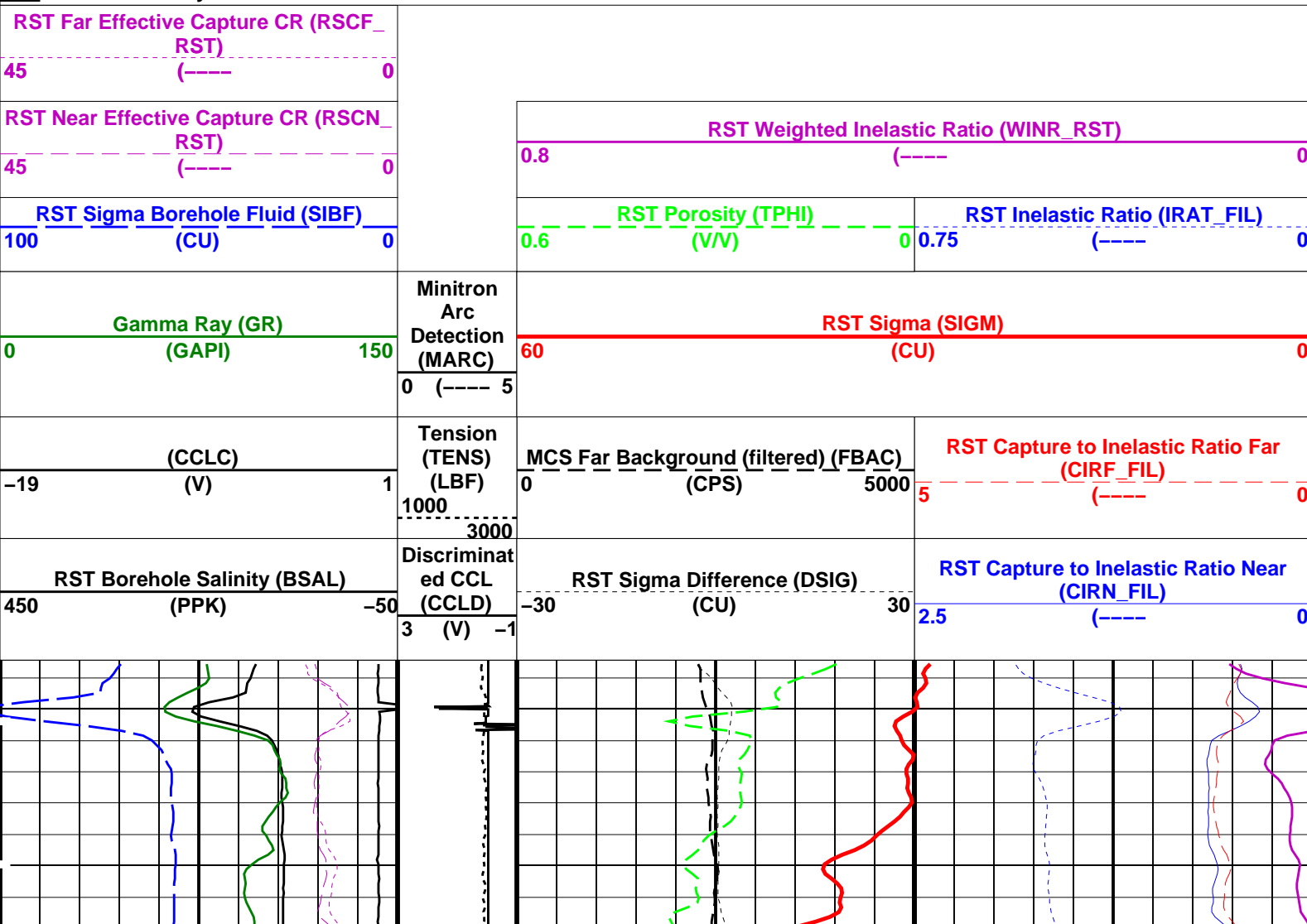
RST-C SRPC-3357-Q2 2007 PSPT-A/B SRPC-3357-Q2 2007

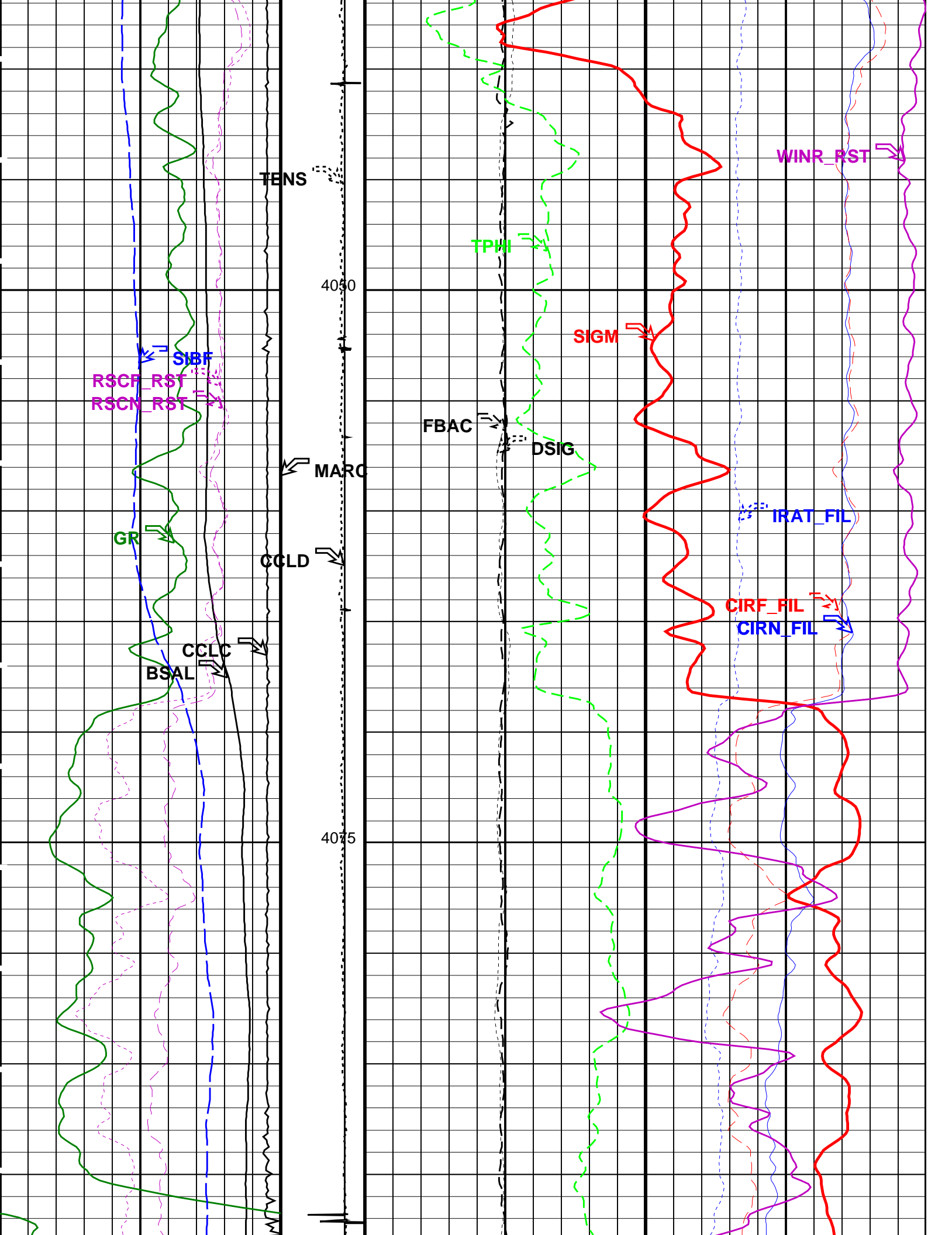
Changed Parameter Summary

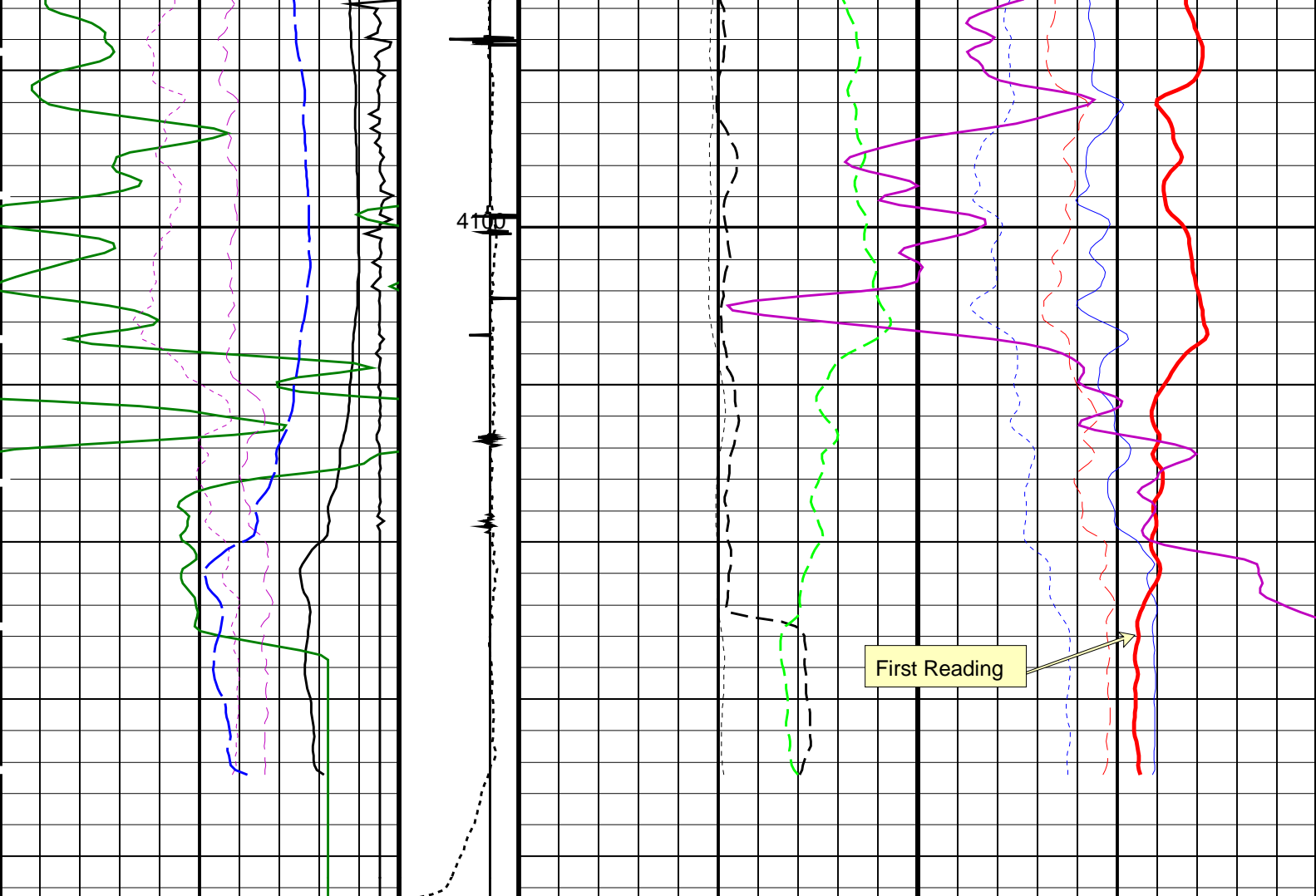
DLIS Name	New Value	Previous Value	Depth & Time
BS	8.500 IN	8.500 IN	4121.4 19:37:27
	12.250 IN	8.500 IN	4065.0 19:37:32

PIP SUMMARY

Time Mark Every 60 S







RST Borehole Salinity (BSAL) (PPK)		Discriminat ed CCL (CCLD)	RST Sigma Difference (DSIG) (CU)		RST Capture to Inelastic Ratio Near (CIRN_FIL)	
450	-50	3 (V) -1	-30	30	2.5	0
(CCLC) (V)		Tension (TENS) (LBF)	MCS Far Background (filtered) (FBAC) (CPS)		RST Capture to Inelastic Ratio Far (CIRF_FIL)	
-19	1	1000	0	5000	5	0
Gamma Ray (GR) (GAPI)		Minitron Arc Detection (MARC)	RST Sigma (SIGM) (CU)			
0	150	0 (---- 5	60	0		
RST Sigma Borehole Fluid (SIBF) (CU)			RST Porosity (TPHI) (V/V)		RST Inelastic Ratio (IRAT_FIL)	
100	0		0.6	0	0.75	0
RST Near Effective Capture CR (RSCN_ RST)			RST Weighted Inelastic Ratio (WINR_RST)			
45	0		0.8	0		
RST Far Effective Capture CR (RSCF_ RST)						
45	0					

PIP SUMMARY

Time Mark Every 60 S

Parameters

DLIS Name	Description	Value
RST-C: Reservoir Saturation Pro Tool C		

AIRB	RST Air Borehole	No	
BHS	Borehole Status	CASED	
BSALOPT	RST Borehole Salinity Option	Unknown	
BSFL	RST Borehole Salinity Filter Length	51	
DFPC	RST Depth Filter Processing Constant	One	
DFPC_TDTL	RST Depth Filter Processing Constant (TDT-like)	Two	
MATR	Rock Matrix for Neutron Porosity Corrections	SANDSTONE	
NORM_IRAT_RST	RST Normalized Inelastic Ratio	0.48	
NORM_SIGM_RST	RST Normalized Sigma	30	CU
RGAI	Near/Far Gain Calibration Ratio	1	
TIER_SIGM	RST Sigma Acquisition Mode	0_RST_Sigma	
	PSPT-A/B: Production Services Logging Platform		
BHS	Borehole Status	CASED	
MATR	Rock Matrix for Neutron Porosity Corrections	SANDSTONE	
	System and Miscellaneous		
BS	Bit Size	8.500	IN
BSAL	Borehole Salinity	-50000.00	PPM
DO	Depth Offset for Playback	0.5	M
PP	Playback Processing	RECOMPUTE	

Format: RST_SIG_ANSW

Vertical Scale: 1:200

Graphics File Created: 01-Sep-2007 19:37

OP System Version: 15C0-309						
MCM						
RST-C	SRPC-3357-Q2_2007	PSPT-A/B	SRPC-3357-Q2_2007			
Input DLIS Files						
DEFAULT	RST_PSP_020LUP	FN:46	PRODUCER	01-Sep-2007 18:56	4120.9 M	4015.0 M
Output DLIS Files						
DEFAULT	RST_PSP_020PUP	FN:1	PRODUCER	01-Sep-2007 19:37		

Schlumberger

Background GR Correlation

MAXIS Field Log

Company: Esso Australia Pty Ltd.

Well: FLA A6

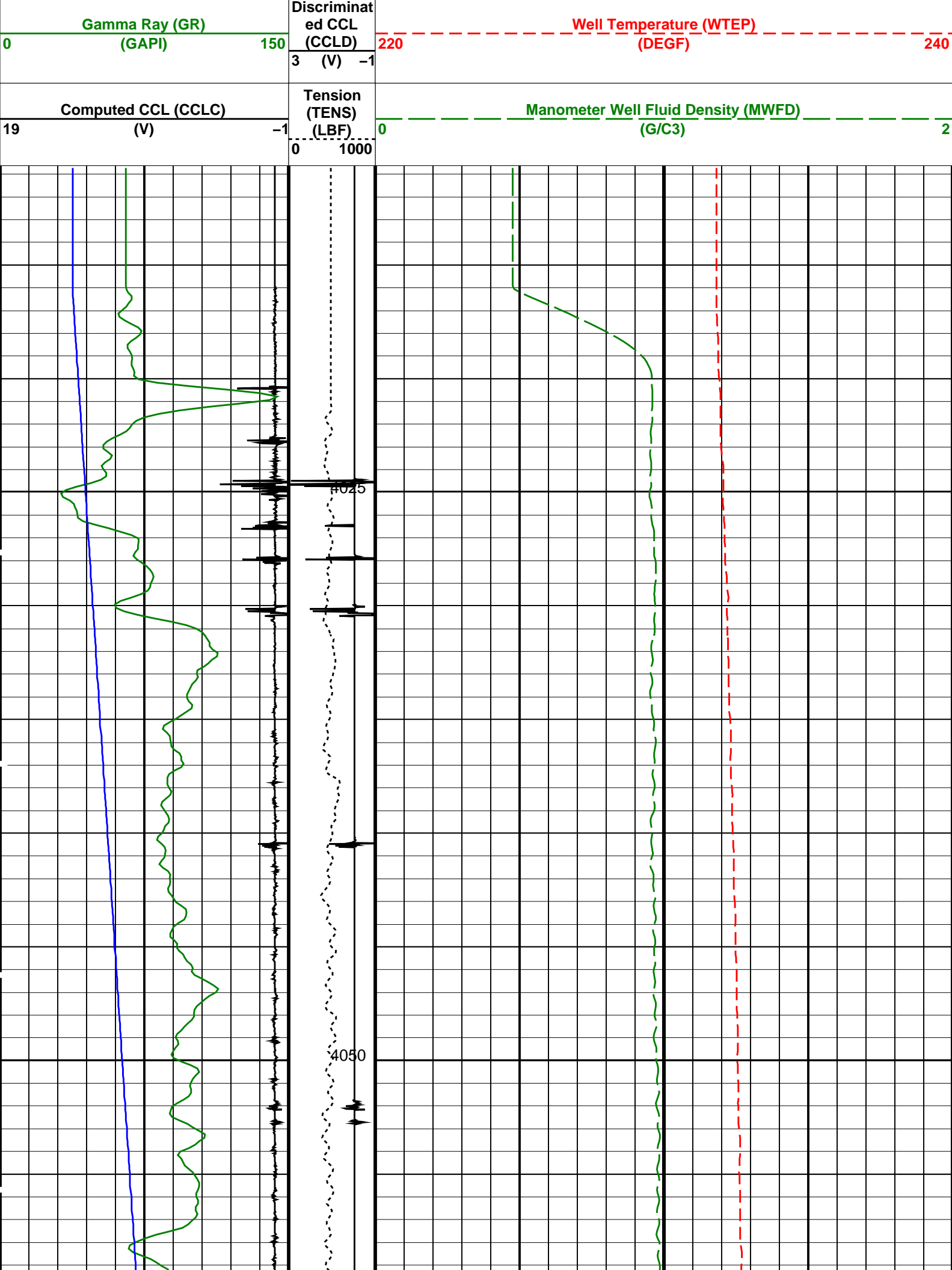
Input DLIS Files					
DEFAULT	RST_PSP_019LUP	FN:44	PRODUCER	01-Sep-2007 18:35	4114.0 M 4009.0 M
Output DLIS Files					
DEFAULT	RST_PSP_019PUP	FN:45	PRODUCER	01-Sep-2007 18:48	4120.6 M 4010.6 M

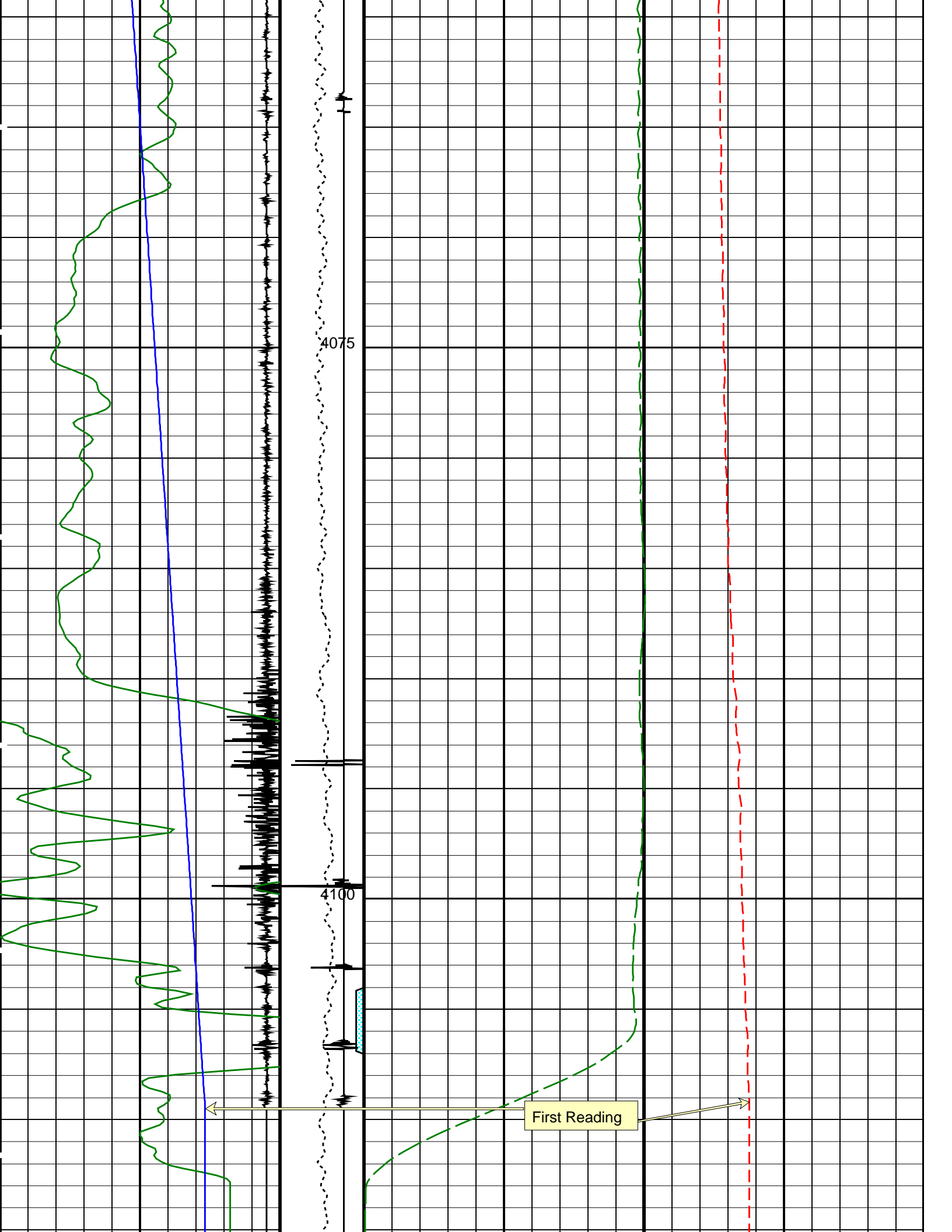
OP System Version: 15C0-309					
MCM					
RST-C	SRPC-3357-Q2_2007	PSPT-A/B	SRPC-3357-Q2_2007		

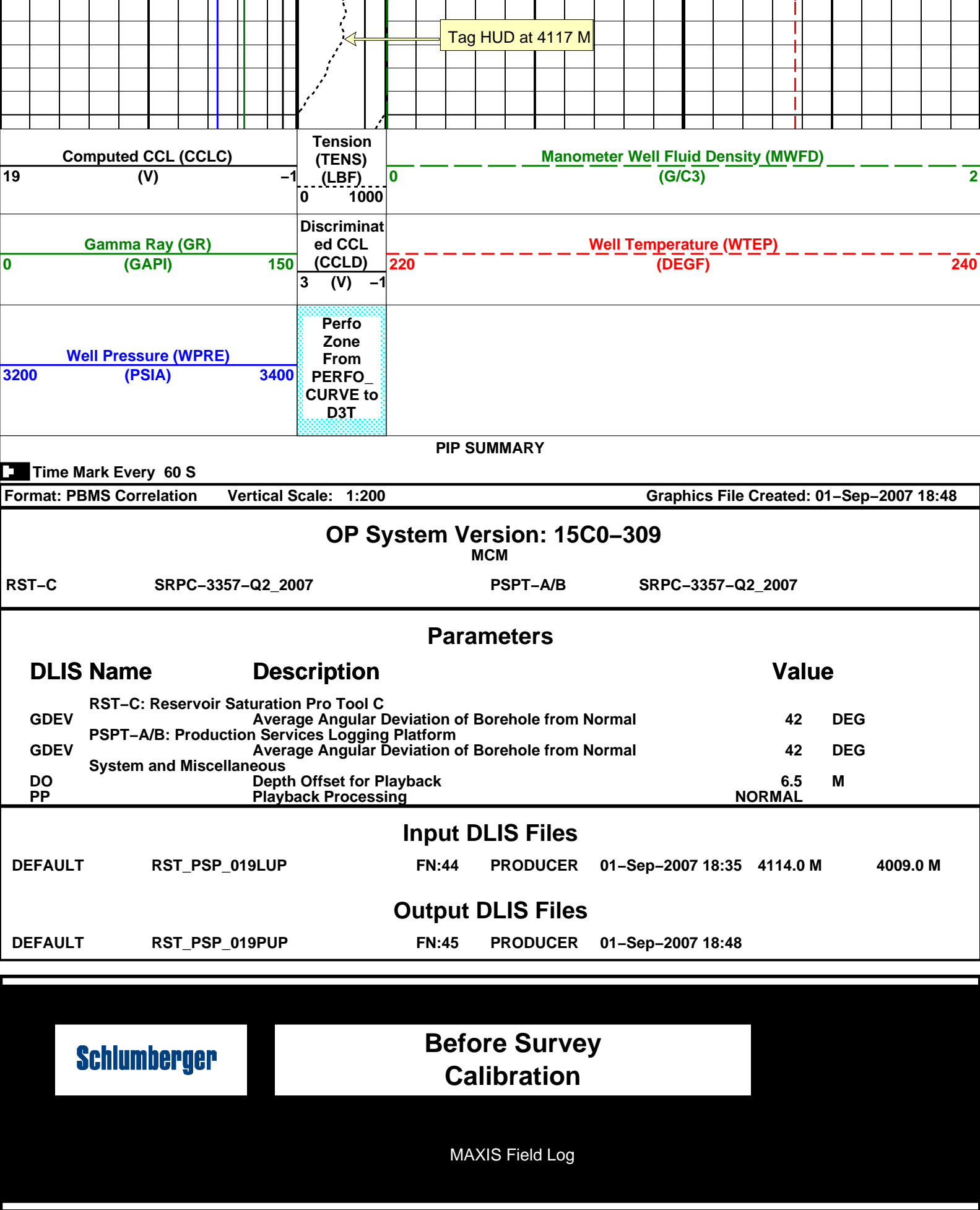
PIP SUMMARY

Time Mark Every 60 S

Well Pressure (WPRES)		Perfo Zone From PERFO_CURVE to D3T	
3200	(PSIA)		
3400			


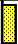






Measurement	Nominal	Master	Before	After	Change	Limit	Units
Production Services Logging Platform Wellsite Calibration – Detector Calibration							
Before: 30–Aug–2007 16:24							
Gamma–Ray Jig–Bkg	165.0	N/A	166.3	N/A	N/A	N/A	GAPI

Production Services Logging Platform / Equipment Identification							
Primary Equipment:							
Production Logging Platform (CQG–F)				PSPT – B			
PSP Basic Measurement Sonde (CQG_F)				PBMS – B	1747		
PSP Basic measurement module				PBMS –			
PSP CCL				CCL –			
PSP GR				GR –			
PSP RTD Well Temperature				RTD_ –			
PSP Crystal Quartz Gauge Type F				CQG_ –			
PSP Telemetry and bus master cartridge				PSTC –	1768		
Auxiliary Equipment:							

Production Services Logging Platform Wellsite Calibration							
Detector Calibration							
Phase	Gamma–Ray Background	GAPI	Value	Phase	Gamma–Ray Jig–Bkg	GAPI	Value
Before			5.650	Before			166.3
0 (Minimum)	30.00 (Nominal)	120.0 (Maximum)		150.0 (Minimum)	165.0 (Nominal)	180.0 (Maximum)	
Before: 30–Aug–2007 16:24							

Company:	Esso Australia Pty Ltd.	Schlumberger
Well:	FLA A6	
Field:	Flounder	
Rig:	Prod 3 / Flounder	
Country:	Australia	
RST–C		
Sigma & IC Log		
1–2 Sep 2007		