

Company: Esso Australia Pty Ltd

Well: FTA A9b

Field: Bass Strait

Rig: 175

Country: Australia

Junk Basket with 6 " Gauge Ring  
MaxR Setting Record

Rig: 175

Field: Bass Strait

Location: Gippsland Basin

Well: FTA A9b

Company: Esso Australia Pty Ltd

LOCATION

Gippsland Basin  
Bass Strait

Elev.: K.B. 42.49 m  
G.L. - 69 m  
D.F. 42.49 m

Permanent Datum: \_\_\_\_\_  
Log Measured From: \_\_\_\_\_  
Drilling Measured From: \_\_\_\_\_

Mean Sea Level \_\_\_\_\_  
Drill Floor \_\_\_\_\_  
Drill Floor \_\_\_\_\_

Elev.: 0.0m  
42.5 m above Perm. Datum

State: Victoria

Max. Well Deviation  
53 deg

Longitude  
148° 16' 36.62" E

Latitude  
38° 24' 31.39" S

	Run 1	Run 2	R
Oil Density			
Water Salinity			
Gas Gravity			
Bo			
Bw			
1/Bg			
Bubble Point Pressure			
Bubble Point Temperature			
Solution GOR			
Maximum Deviation	53 deg		
CEMENTING DATA			
Primary/Squeeze	Primary		
Casing String No			
Lead Cement Type			
Volume			
Density			
Water Loss			
Additives			
Tail Cement Type			
Volume			
Density			
Water Loss			
Additives			
Expected Cement Top			

Logging Date	30-Aug-2007	Max. Well Deviation 53 deg	Longitude 148° 16' 36.62" E	Latitude 38° 24' 31.39" S
Run Number	1			
Depth Driller	3746 m			
Schlumberger Depth	3690.5 m Tagged			
Bottom Log Interval	3614.49 m			
Top Log Interval	3614.49 m			
Casing Fluid Type	Brine			
Salinity				
Density				
Fluid Level				
BIT/CASING/TUBING STRING				
Bit Size	8.500 in			
From	0 m			
To	3746 m			
Casing/Tubing Size	7.000 in			
Weight	26 lbn/ft			
Grade	L-80			
From	0 m			
To	3732 m			
Maximum Recorded Temperatures				
Logger On Bottom	30-Aug-2007	Time	11:32	
Unit Number	3829	Location	AUSL	
Recorded By	Owen Darby			
Witnessed By	Greg Doty and Mark Turner			

Logging Date			
Run Number			
Depth Driller			
Schlumberger Depth			
Bottom Log Interval			
Top Log Interval			
Casing Fluid Type			
Salinity			
Density			
Fluid Level			
BIT/CASING/TUBING STRING			
Bit Size			
From			
To			
Casing/Tubing Size			
Weight			
Grade			
From			
To			
Maximum Recorded Temperatures			
Logger On Bottom		Time	
Unit Number		Location	
Recorded By			
Witnessed By			

Date Created: 30-AUG-2007 19:36:18

## Logging Cable

Type:	7-46V-XS
Serial Number:	76371
Length:	5921.04 M
<hr/>	
Conveyance Method:	Wireline
Rig Type:	Offshore_Fixed

Log Sequence:	Subsequent Trip To the Well
Reference Log Name:	LWD log
Reference Log Run Number:	1
Reference Log Date:	27-Aug-2007
Subsequent Trip Down Log Correction:	2.00 M

1. Correlated to Schlumberger LWD log provided by client
2. Used IDW as primary depth control
3. Used Z-Chart as secondary depth control
4. –
- 5.
- 6.

THE USE OF AND RELIANCE UPON THIS RECORDED-DATA BY THE HEREIN NAMED COMPANY (AND ANY OF ITS AFFILIATES, PARTNERS, REPRESENTATIVES, AGENTS, CONSULTANTS AND EMPLOYEES) IS SUBJECT TO THE TERMS AND CONDITIONS AGREED UPON BETWEEN SCHLUMBERGER AND THE COMPANY, INCLUDING: (a) RESTRICTIONS ON USE OF THE RECORDED-DATA; (b) DISCLAIMERS AND WAIVERS OF WARRANTIES AND REPRESENTATIONS REGARDING COMPANY'S USE OF AND RELIANCE UPON THE RECORDED-DATA; AND (c) CUSTOMER'S FULL AND SOLE RESPONSIBILITY FOR ANY INFERENCE DRAWN OR DECISION MADE IN CONNECTION WITH THE USE OF THIS RECORDED-DATA.

OS1:  
OS2:  
OS3:  
OS4:  
OS5:

REMARKS: RUN NUMBER 2

Objective:

RIH with toolstring incorporating GR/CCL, CPST-AA , MAX-R assembly and a 4.5" HSD

POOH, rig down. Perforation interval = 3623 to 3626.5m MDKB

After setting the MaxR tool power was lost and a second log had to be started too power up the PGGT-D and continue logging with GR.

Schlumberger Crew:










Operators= Rick Murray and Zeb Casey (days)

Luke Dooley and Andrew Hall (nights)

Specialist = Owen Darby

RUN 1			RUN 2		
SERVICE ORDER #:		L0501H008	SERVICE ORDER #:		
PROGRAM VERSION:		15C0-309	PROGRAM VERSION:		
FLUID LEVEL:			FLUID LEVEL:		
LOGGED INTERVAL	START	STOP	LOGGED INTERVAL	START	STOP

[illegible]

RUN 1				RUN 2			
SURFACE EQUIPMENT				SURFACE EQUIPMENT		WITM (SHM)–0	
DOWNHOLE EQUIPMENT				DOWNHOLE EQUIPMENT			
PEH–A PEH–A 11		4.91		PEH–A PEH–A 11		17.00	
AH–64 AH–64 8001		4.36		AH–64 AH–64 8001		16.45	
PGGT–D PGGC PGGH–D 229		3.95	Gamma Ray 1.07	PGGT–D PGGC PGGH–D 229		16.05	Gamma Ray 1.07
			Casing Co Tension TOOL ZERO				Casing Co Tension TOOL ZERO
				AH–283		14.26	
				AH–CPST–AA AH–CPST–AA		14.10	
				AH–MaxR AH–MaxR		11.84	

AH-283  
AH-283 5002

AH-Junk Basket  
AH-Junk Basket

AH-6" Gauge Ring

TOOL BOTTOM

2.17  
2.01  
0.05

MAXIMUM STRING DIAMETER 6.00 IN  
MEASUREMENTS RELATIVE TO TOOL ZERO  
ALL LENGTHS IN METERS

SHM\_GUN  
GUN-4 1/2" HSD Gun

6.10

TOOL BOTTOM

MAXIMUM STRING DIAMETER 7.00 IN  
MEASUREMENTS RELATIVE TO TOOL ZERO  
ALL LENGTHS IN METERS

Client: Esso Australia Pty Ltd.

Well: FTA A9b

Field: Gippsland Basin

State: Victoria

Country: Australia

Rig Name: 175

Reference Datum: Mean Sea Level

Elevation: 42.5 m

8/29/2007

Production String	(in)		(m)	Well Schematic	(m)	(in)		Casing String
	OD	ID	MD		MD	OD	ID	
					0.0	20.000		Conductor pipe
					190.0			
					1389.0	10.375		Surface casing

[illegible]

## Job Events Summary

MAXIS Field Log

## Schlumberger Job Event Summary

	Time	Elapsed Time	Depth (M)	File
Simulated Log OP checked toolstring	29-Aug-2007	7:54	000:10	PERFO_002LUP
Simulated Log Hot check	30-Aug-2007	8:47	000:07	PERFO_008LUP
Log Pass (down) RIH	30-Aug-2007	9:48	000:32	1900.1 – 3580.8 PERFO_012LDP
Log Pass (up) Correlation Pass	30-Aug-2007	10:42	000:06	3575.2 – 3509.2 PERFO_015LUP
Log Pass (up) POOH	30-Aug-2007	11:02	000:09	3700.0 – 3500.8 PERFO_022LUP
Simulated Log Hot check for MaxR	30-Aug-2007	13:54	000:03	PERFO_026LUP
Log Pass (down) RIH with MaxR	30-Aug-2007	15:34	001:14	581.7 – 3665.1 PERFO_028LDP

Log Pass (up) 30-Aug-2007 17:10 000:08 3664.5 - 3607.8 PERFO\_033LUP  
Correlation Pass MaxR  
Log Pass (up) 30-Aug-2007 17:37 000:13 3665.2 - 3611.6 PERFO\_037LUP  
Setting Pass  
Rig Down Completed 30-Aug-2007 19:15

**Schlumberger**

## MaxR After Setting Pass

MAXIS Field Log

Company: Esso Australia Pty Ltd

Well: FTA A9b

### Output DLIS Files

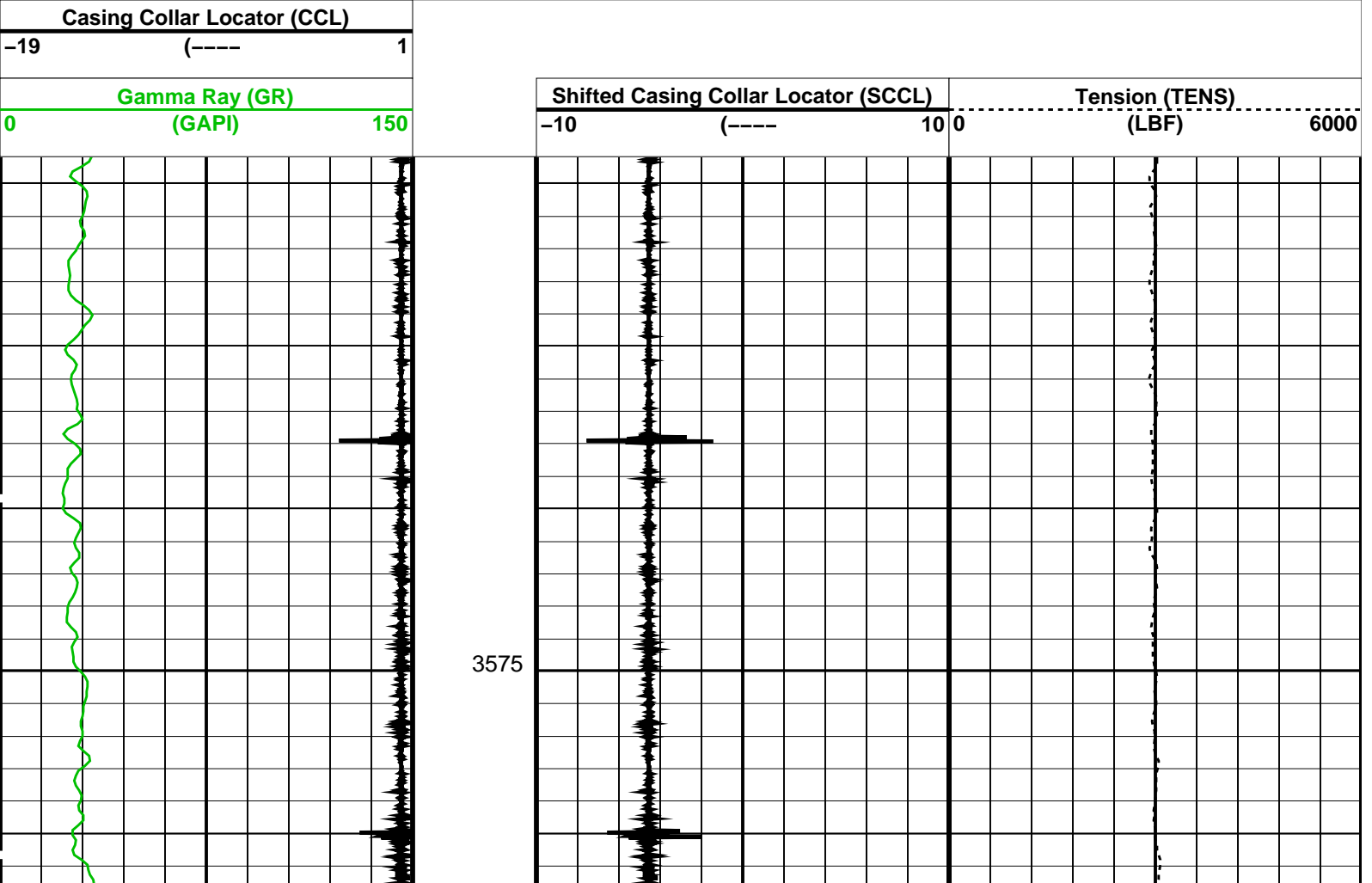
DEFAULT PERFO\_038LUP FN:37 PRODUCER 30-Aug-2007 17:50

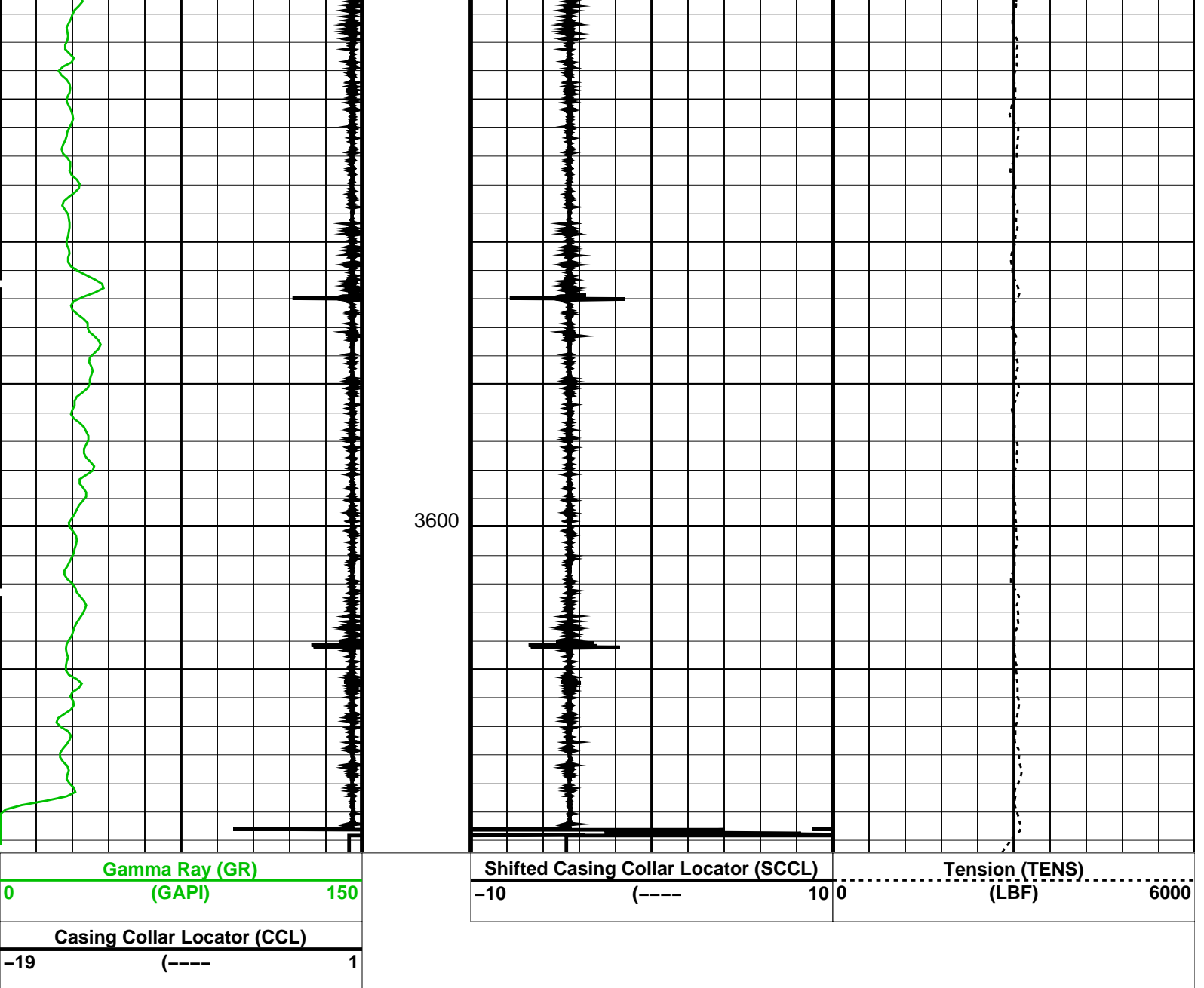
### OP System Version: 15C0-309 MCM

SHM\_GUN 15C0-309 PGGT-D 15C0-309

#### PIP SUMMARY

 Time Mark Every 60 S





#### PIP SUMMARY

Time Mark Every 60 S

Format: PERFO\_2 Vertical Scale: 1:200

Graphics File Created: 30-Aug-2007 17:50

**OP System Version: 15C0-309**

MCM

SHM\_GUN

15C0-309

PGGT-D

15C0-309

#### Output DLIS Files

DEFAULT

PERFO\_038LUP

FN:37

PRODUCER

30-Aug-2007 17:50

**Schlumberger**

**MaxR  
Setting Pass**

# PERFO2 Operational Summary Listing

Device Status Req Depth ( M) Obs Depth ( M) Time Used

GUN1 Used 3623.0 3623.0 Thu Aug 30 17:31:33 2007

Company: Esso Australia Pty Ltd

Well: FTA A9b

## Output DLIS Files

DEFAULT PERFO\_037LUP FN:36 PRODUCER 30-Aug-2007 17:37 3665.2 M 3611.6 M

## OP System Version: 15C0-309

MCM

SHM\_GUN 15C0-309 PGGT-D 15C0-309

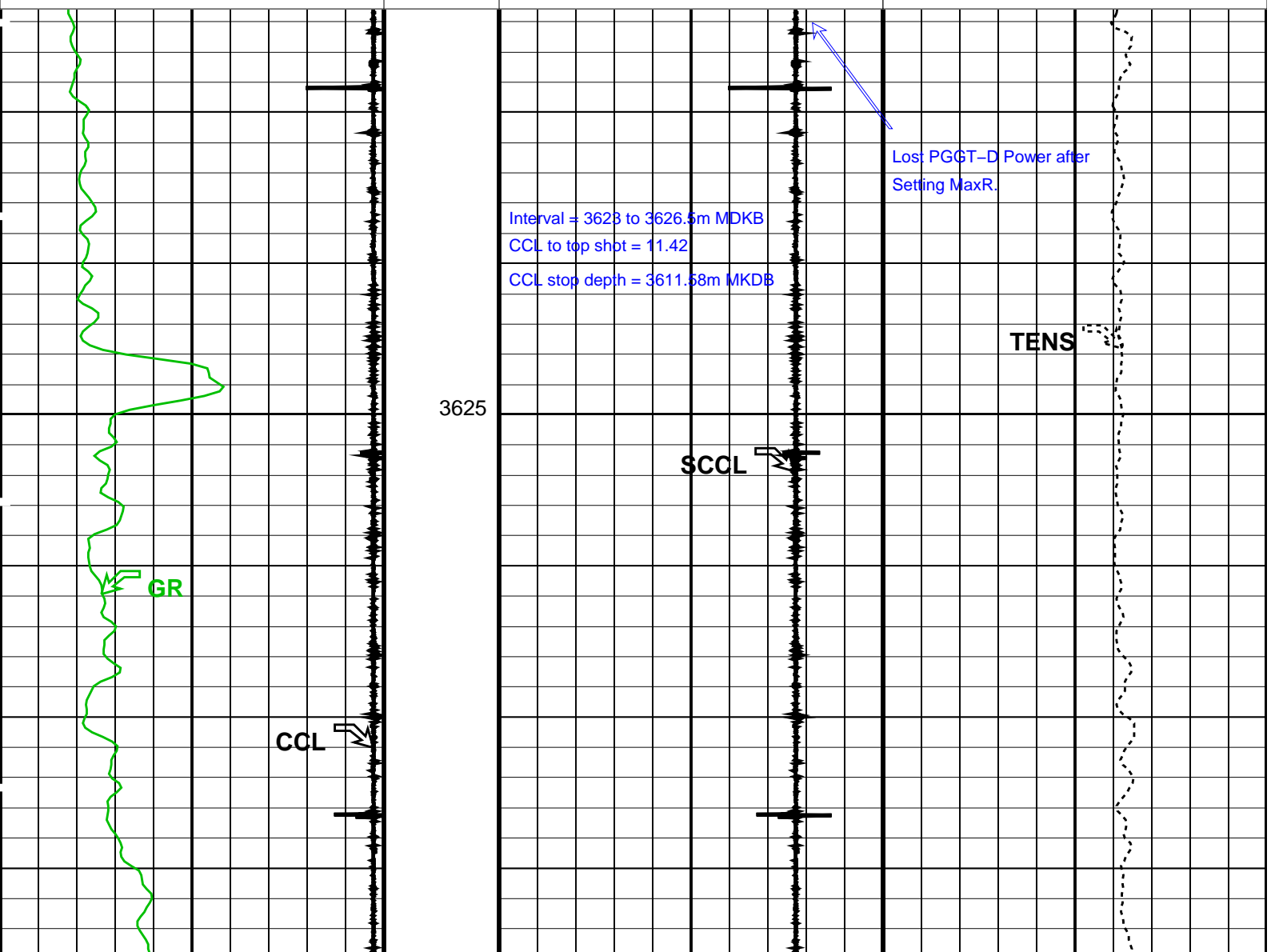
## PIP SUMMARY

Time Mark Every 60 S

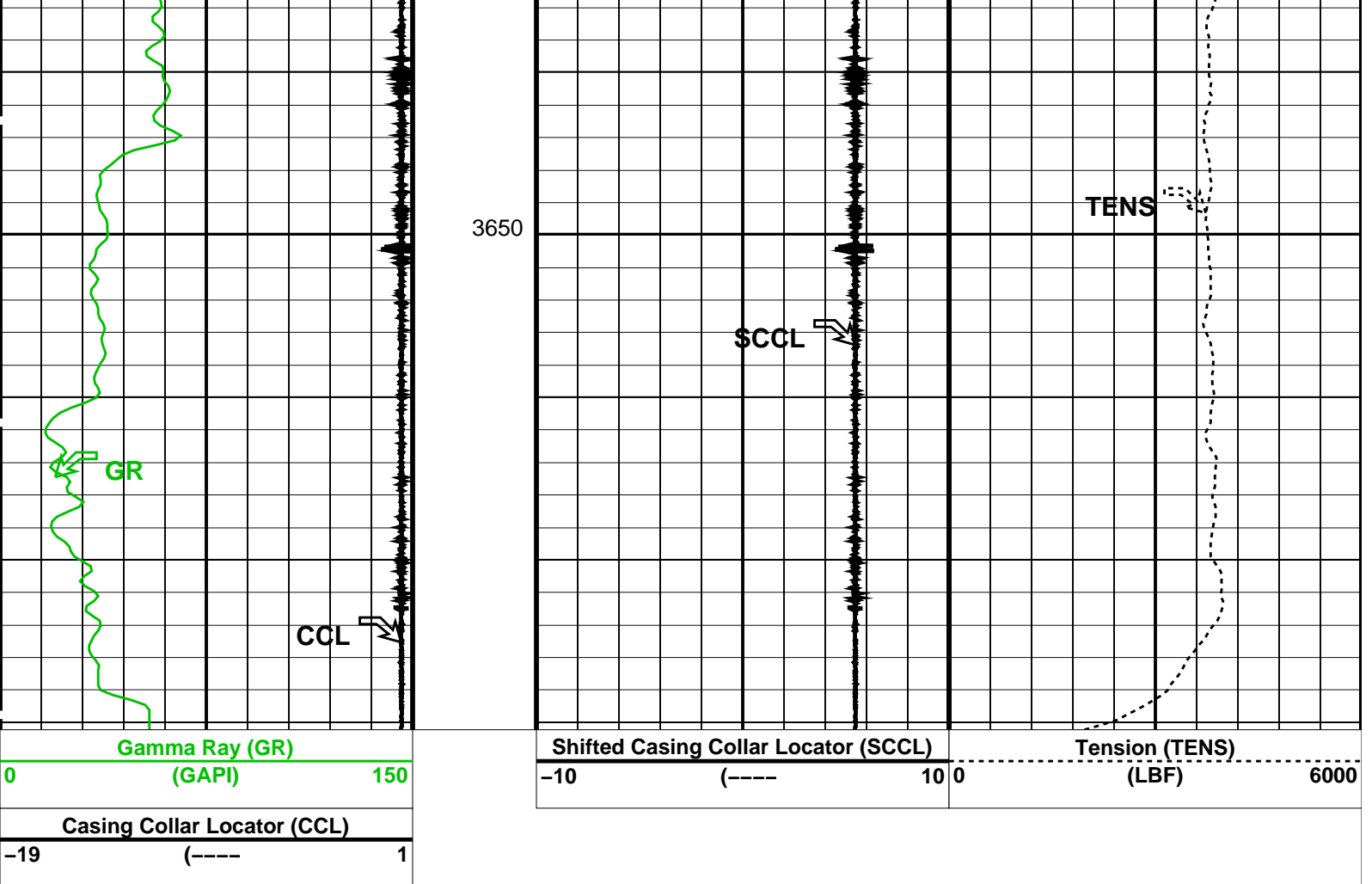
Casing Collar Locator (CCL)  
-19 (----) 1

Gamma Ray (GR)  
(GAPI) 0 150

Shifted Casing Collar Locator (SCCL) Tension (TENS)  
-10 (----) 10 0 (LBF) 6000







#### PIP SUMMARY

Time Mark Every 60 S

Format: PERFO\_2 Vertical Scale: 1:200

Graphics File Created: 30-Aug-2007 17:38

**OP System Version: 15C0-309**

MCM

SHM\_GUN

15C0-309

PGGT-D

15C0-309

#### Output DLIS Files

DEFAULT

PERFO\_037LUP

FN:36

PRODUCER

30-Aug-2007 17:37

**Schlumberger**

**Max-R  
Corelation Pass**

MAXIS Field Log

Company: Esso Australia Pty Ltd

Well: FTA A9b

#### Output DLIS Files

DEFAULT

PERFO\_033LUP

FN:32

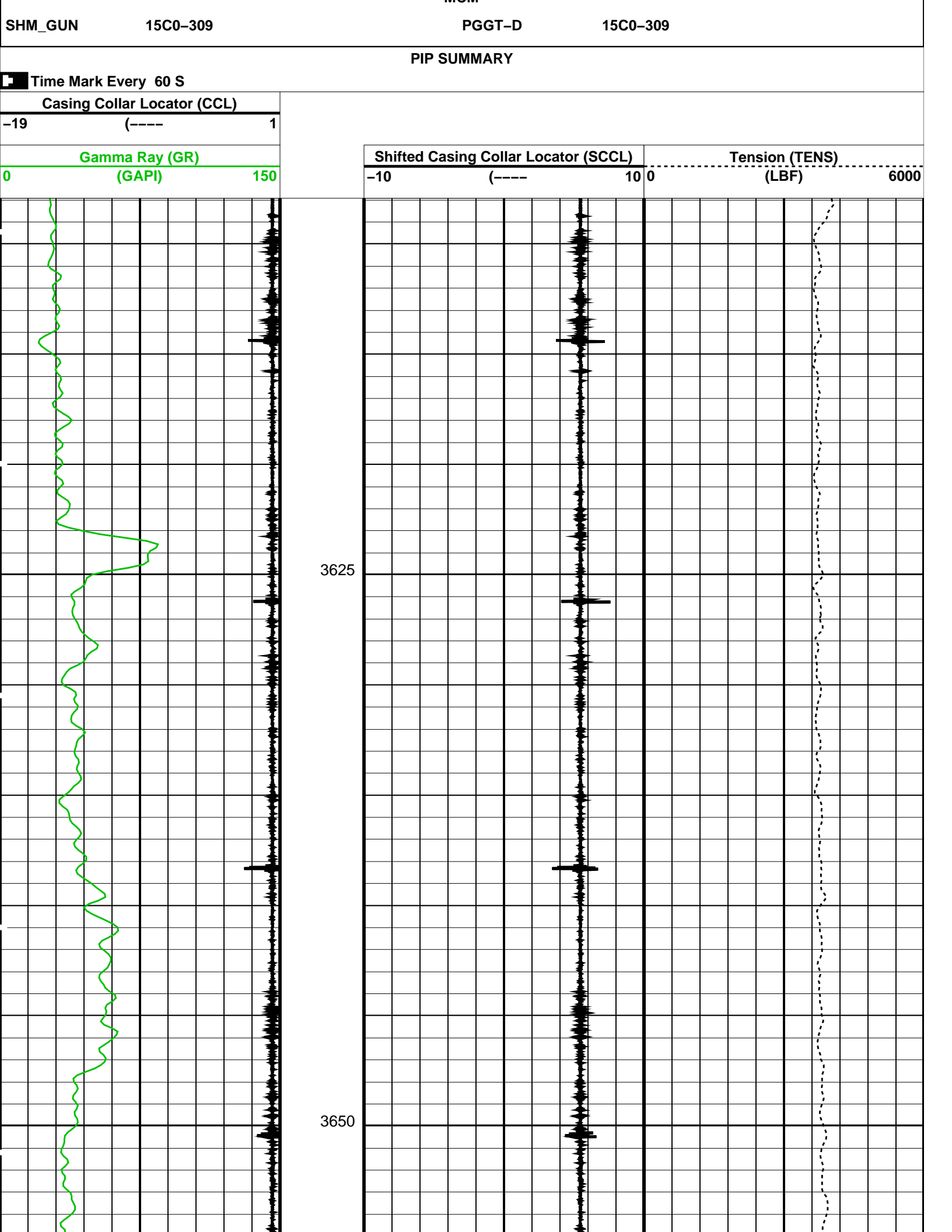
PRODUCER

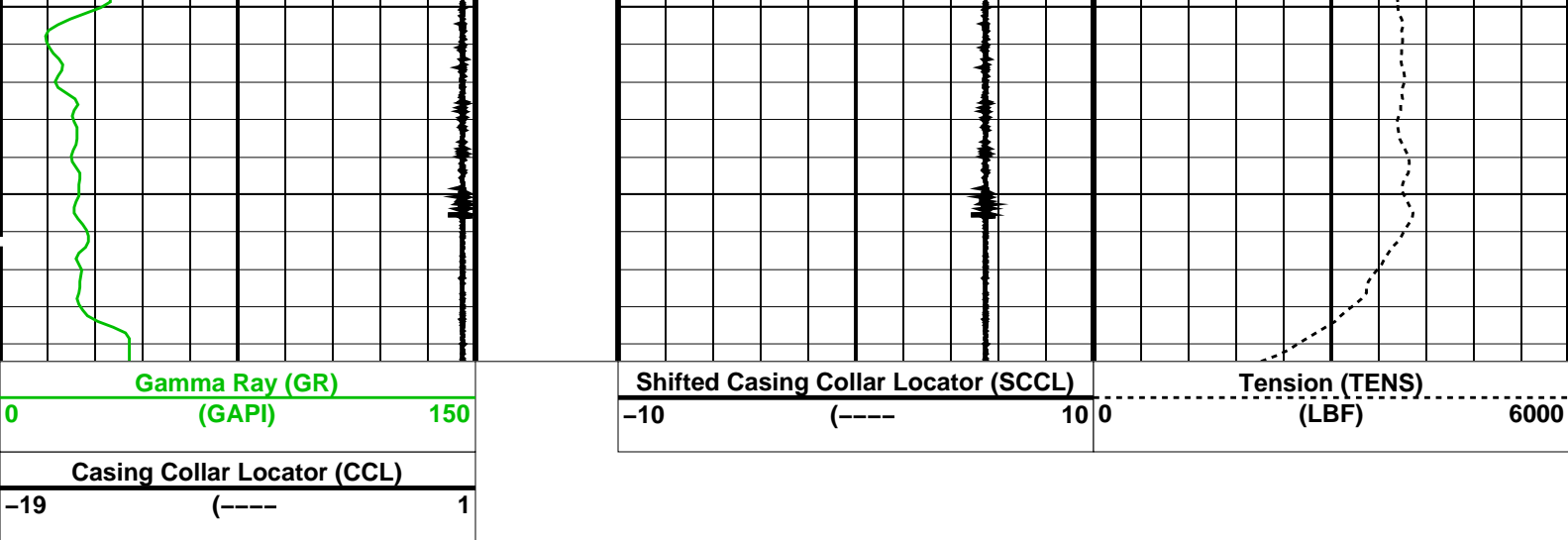
30-Aug-2007 17:10 3664.5 M

3607.8 M

**OP System Version: 15C0-309**

MCM





PIP SUMMARY

Time Mark Every 60 S

Format: PERFO\_2 Vertical Scale: 1:200

Graphics File Created: 30-Aug-2007 17:10

OP System Version: 15C0-309

MCM

SHM\_GUN

15C0-309

PGGT-D

15C0-309

Output DLIS Files

DEFAULT

PERFO\_033LUP

FN:32

PRODUCER

30-Aug-2007 17:10

Schlumberger

Junk Basket with 6' Gauge Ring  
Corelation Pass

MAXIS Field Log

Company: Esso Australia Pty Ltd

Well: FTA A9b

Input DLIS Files

DEFAULT

PERFO\_015LUP

FN:14

PRODUCER

30-Aug-2007 10:42

3575.2 M

3509.2 M

Output DLIS Files

DEFAULT

PERFO\_017PUP

FN:16

PRODUCER

30-Aug-2007 10:52

3577.0 M

3511.4 M

OP System Version: 15C0-309

MCM

SHM\_GUN

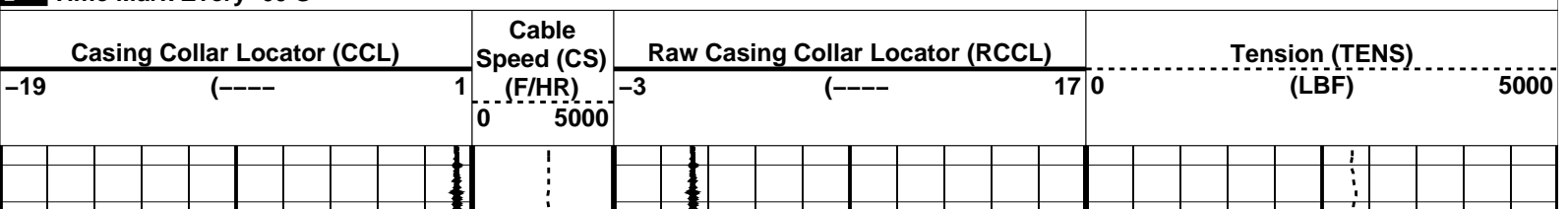
15C0-309

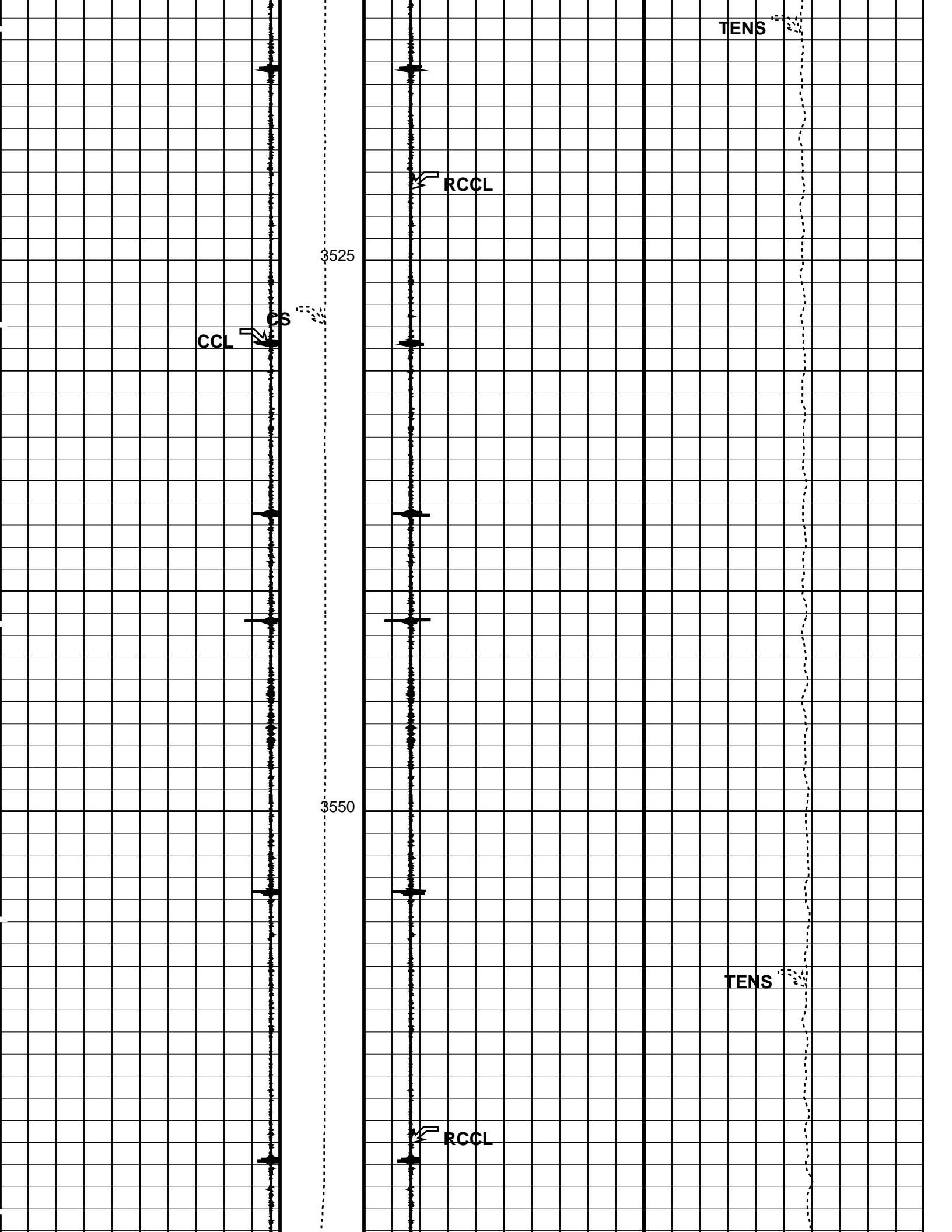
PGGT-D

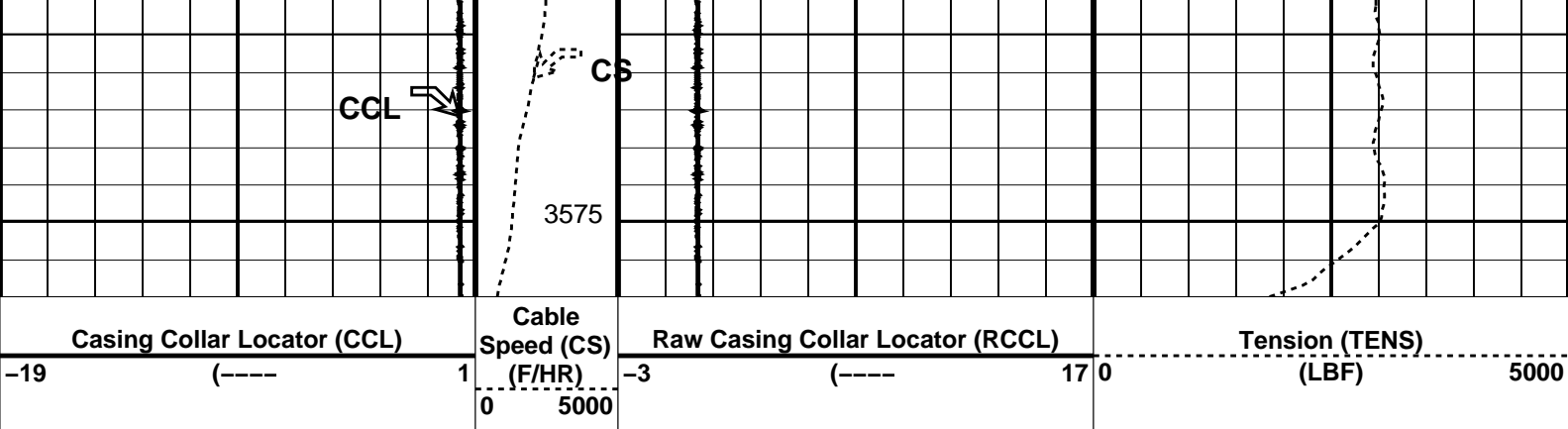
15C0-309

PIP SUMMARY

Time Mark Every 60 S







Time Mark Every 60 S

Parameters		
DLIS Name	Description	Value
DO	System and Miscellaneous	
PP	Depth Offset for Playback	1.8 M
	Playback Processing	NORMAL

Format: PERFO Vertical Scale: 1:200 Graphics File Created: 30-Aug-2007 10:52

OP System Version: 15C0-309			
MCM			
SHM_GUN	15C0-309	PGGT-D	15C0-309

Input DLIS Files					
DEFAULT	PERFO_015LUP	FN:14	PRODUCER	30-Aug-2007 10:42	3575.2 M 3509.2 M
Output DLIS Files					
DEFAULT	PERFO_017PUP	FN:16	PRODUCER	30-Aug-2007 10:52	

Company: **Esso Australia Pty Ltd**

Well: **FTA A9b**

Field: **Bass Strait**

Rig: **175**

Country: **Australia**

**Schlumberger**

Junk Basket with 6 " Gauge Ring  
MaxR Setting Record