

Company: Esso Australia Pty Ltd.

Well: FLA A5

Field: Flounder

Rig: Prod 3 / Flounder Country: Australia

MPBT

Cement Bailers

10-Sep-2007

LOCATION

Bass Strait

Gippsland

Basin

Permanent Datum:

Log Measured From:

Drilling Measured From:

Mean Sea Level

Drill Floor

Drill Floor

Elev.:

G.L.

D.F.

34.2 m

-94 m

34.1 m

State:

Victoria

Max. Well Deviation

33.59 deg

Longitude

148° 06' 15.1" E

Latitude

38° 18'45.24"S

Rig:

Field:

Location:

Well:

Company:

Prod 3 / Flounder

Flounder

Bass Strait

FLA A5

Esso Australia Pty Ltd.

Logging Date				10-Sep-2007			
Run Number				1			
Depth Driller				2955 m			
Schlumberger Depth				2842 m			
Bottom Log Interval				2835 m			
Top Log Interval				2834 m			
Casing Fluid Type				Produced Fluids			
Salinity							
Density				1 g/cm3			
Fluid Level				1482 m			
BIT/CASING/TUBING STRING							
Bit Size				9.875 in			
From				611 m			
To				2955 m			
Casing/Tubing Size				7.625 in			
Weight				29.7 lbm/ft			
Grade				N-80			
From				13 m			
To				2905 m			
Maximum Recorded Temperatures				231 degF			
Logger On Bottom				10-Sep-2007		18:45	
Unit Number				93	AUSL		
Recorded By				C.Rowand, B.Donahoe			
Witnessed By				Mr Brian Davis			

Oil Density				Run 1	Run 2	Run
Water Salinity						
Gas Gravity						
Bo						
Bw						
1/Bg						
Bubble Point Pressure						
Bubble Point Temperature						
Solution GOR						
Maximum Deviation				33.59 deg		
CEMENTING DATA						
Primary/Squeeze				Primary		
Casing String No						
Lead Cement Type						
Volume						
Density						
Water Loss						
Additives						
Tail Cement Type						
Volume						
Density						
Water Loss						
Additives						
Expected Cement Top						
Logging Date						
Run Number						
Depth Driller						
Schlumberger Depth						
Bottom Log Interval						
Top Log Interval						
Casing Fluid Type						
Salinity						
Density						
Fluid Level						
BIT/CASING/TUBING STRING						
Bit Size						
From						
To						
Casing/Tubing Size						
Weight						
Grade						
From						
To						
Maximum Recorded Temperatures						
Logger On Bottom						
Unit Number						
Recorded By						
Witnessed By						

DEPTH SUMMARY LISTING

Date Created: 11-SEP-2007 14:24:34

Depth System Equipment

Depth Measuring Device		Tension Device		Logging Cable	
Type:	IDW-H	Type:	CMTD-B/A	Type:	2-32ZT
Serial Number:	797	Serial Number:	1721	Serial Number:	24016
Calibration Date:	11-May-2007	Calibration Date:	15-Aug-2007	Length:	5149.90 M
Calibrator Serial Number:	1	Calibrator Serial Number:	1173	Conveyance Method:	Wireline
Calibration Cable Type:	2-32ZT	Calibration Gain:	0.89	Rig Type:	Offshore_Fixed
Wheel Correction 1:	-3	Calibration Offset:	-731.00		
Wheel Correction 2:	-1				

Depth Control Parameters

Log Sequence:	Subsequent Log In the Well
Reference Log Name:	Esso Solar Composite Correlation Log
Reference Log Run Number:	
Reference Log Date:	

Depth Control Remarks

1. Log correlated to Esso Solar Composite Correlation Log (no date), provided by Esso
- 2.
- 3.
- 4.
- 5.
6. Tool zeroed in the Toolcatcher at -2.5 m

DISCLAIMER

THE USE OF AND RELIANCE UPON THIS RECORDED-DATA BY THE HEREIN NAMED COMPANY (AND ANY OF ITS AFFILIATES, PARTNERS, REPRESENTATIVES, AGENTS, CONSULTANTS AND EMPLOYEES) IS SUBJECT TO THE TERMS AND CONDITIONS AGREED UPON BETWEEN SCHLUMBERGER AND THE COMPANY, INCLUDING: (a) RESTRICTIONS ON USE OF THE RECORDED-DATA; (b) DISCLAIMERS AND WAIVERS OF WARRANTIES AND REPRESENTATIONS REGARDING COMPANY'S USE OF AND RELIANCE UPON THE RECORDED-DATA; AND (c) CUSTOMER'S FULL AND SOLE RESPONSIBILITY FOR ANY INFERENCE DRAWN OR DECISION MADE IN CONNECTION WITH THE USE OF THIS RECORDED-DATA.

OTHER SERVICES1	OTHER SERVICES2
OS1:	OS1:
OS2:	OS2:
OS3:	OS3:
OS4:	OS4:
OS5:	OS5:
REMARKS: RUN NUMBER 1	REMARKS: RUN NUMBER 2
Correlated to Esso Solar Composite Log (no date), provided by client.	
Run Dummy Plug as drift run to 2842m MDKB.	
Run MPBT and set plug (H405320) at 2835 m MDKB (Top Seal) .	
Run 2 seperate 40 ft 1-11/16" bailer runs, both cement.	
Dumping 1.08m of cement	

DOWNHOLE EQUIPMENT		DOWNHOLE EQUIPMENT	
MH-22 MH-22	14.04	MH-22 MH-22	17.80
EQF-46 EQF-46 3001	13.56	EQF-46 EQF-46 3001	17.32
EQF-46 EQF-46	11.73	EQF-46 EQF-46	15.49
CCL Tachometer Cable Cur Head Volt Tension	9.90	CCL-L CCL-L 9851	13.67
CCL-L CCL-L 9851	9.44	SHM_GUN GUN	13.21

MPEX-DA H405320
MPEX-DA

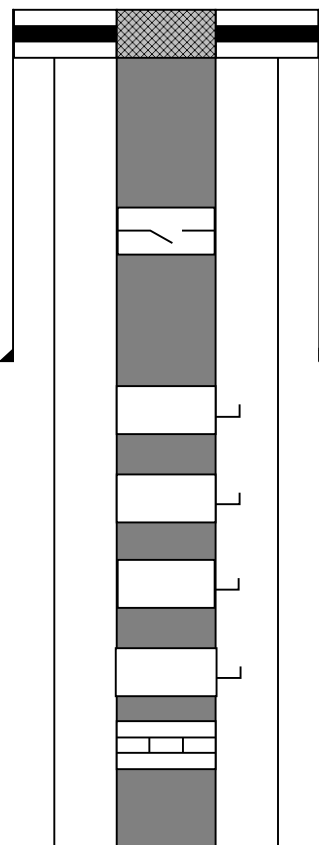
3.20

TOOL BOTTOM

MAXIMUM STRING DIAMETER 2.13 IN
MEASUREMENTS RELATIVE TO TOOL ZERO
ALL LENGTHS IN METERS

TOOL BOTTOM

MAXIMUM STRING DIAMETER 2.13 IN
MEASUREMENTS RELATIVE TO TOOL ZERO
ALL LENGTHS IN METERS

Production String	(in)		(m)	Well Schematic	(m)	(in)		Casing String
	OD	ID	MD		MD	OD	ID	
Tubing Hanger Tubing	10.750 3.500	3.500 2.992	12.6		13.0	10.750 7.625	6.875	Casing String
SSSV	3.500	2.750	443.5		611.0	10.750		Casing Shoe
Side Pocket Mandrel	3.500	2.900	793.0					
Side Pocket Mandrel	3.500	2.900	1247.0					
Side Pocket Mandrel	3.500	2.900	1430.0					
Side Pocket Mandrel	3.500	2.900	1708.0					
Nipple	3.500	2.750	1724.0					

Packer	7.625	3.500	2723.0				
Nipple	3.500	2.635	2728.0				
Packer	7.625	3.500	2749.0				
Nipple	3.500	2.329	2763.0				
Packer	7.625	3.500	2774.0				
Nipple	3.500	2.400	2778.0				
Tubing Bottom	3.500	2.992	2780.0				
Bridge Plug					2815.0		Perforations
					2817.0		
					2836.8		Perforations
					2839.0		
					2843.0		Cement Plug
	7.625	0.000	2844.0				
					2905.0	7.625	6.875
							Casing Shoe



Bailer Run 2

MAXIS Field Log

PERFO2 Operational Summary Listing

Device	Status	Req Depth (M)	Obs Depth (M)	Time Used
Cement Bailer #2	Used	2833.5	2833.6	Sat Sep 15 21:04:37 2007

Input DLIS Files

DEFAULT	Flip_PERFO_032LUP	PRODUCER	15-Sep-2007 21:13	2820.3 M	2746.2 M
---------	-------------------	----------	-------------------	----------	----------

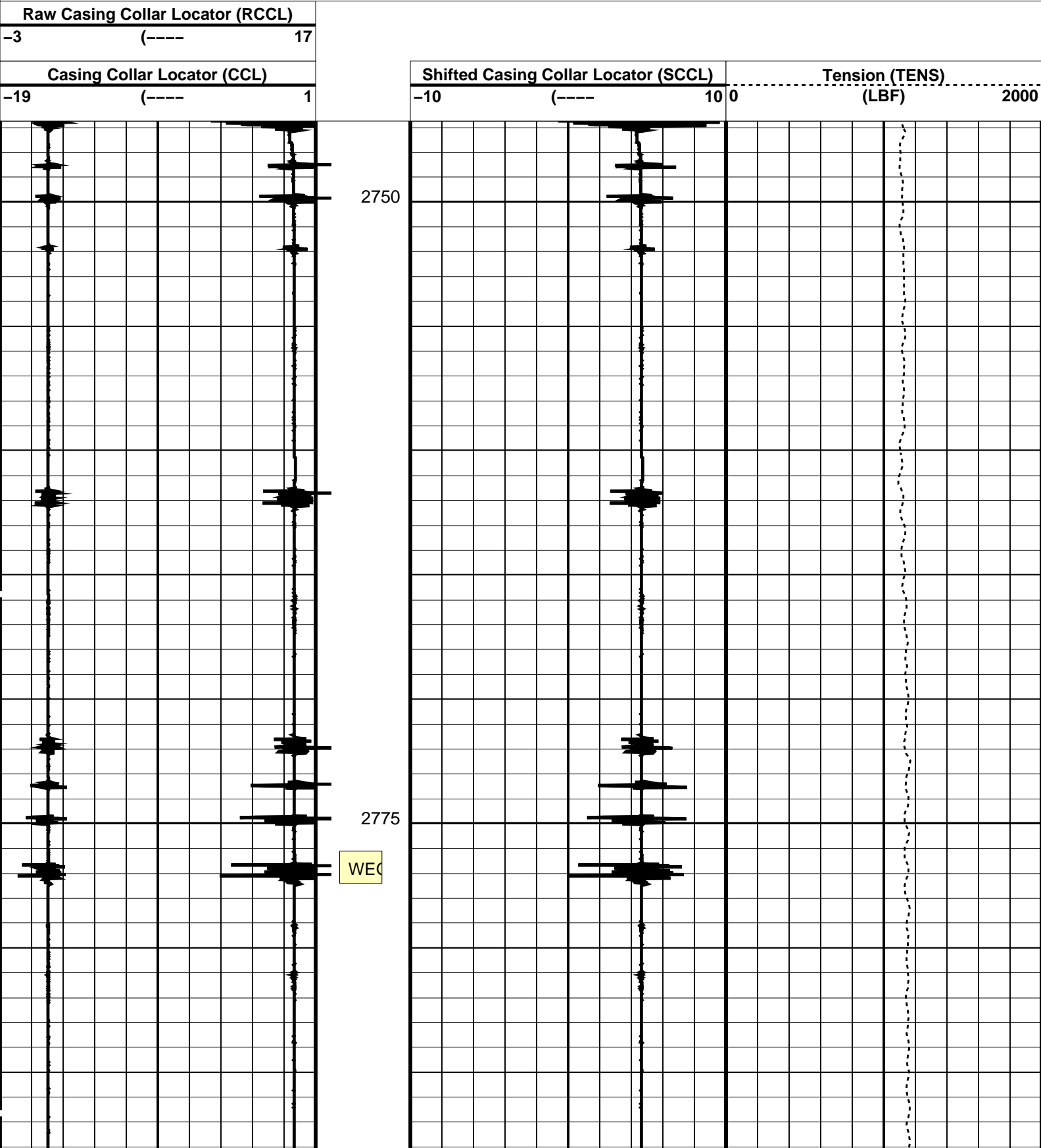
OP System Version: 15C0-309
MCM

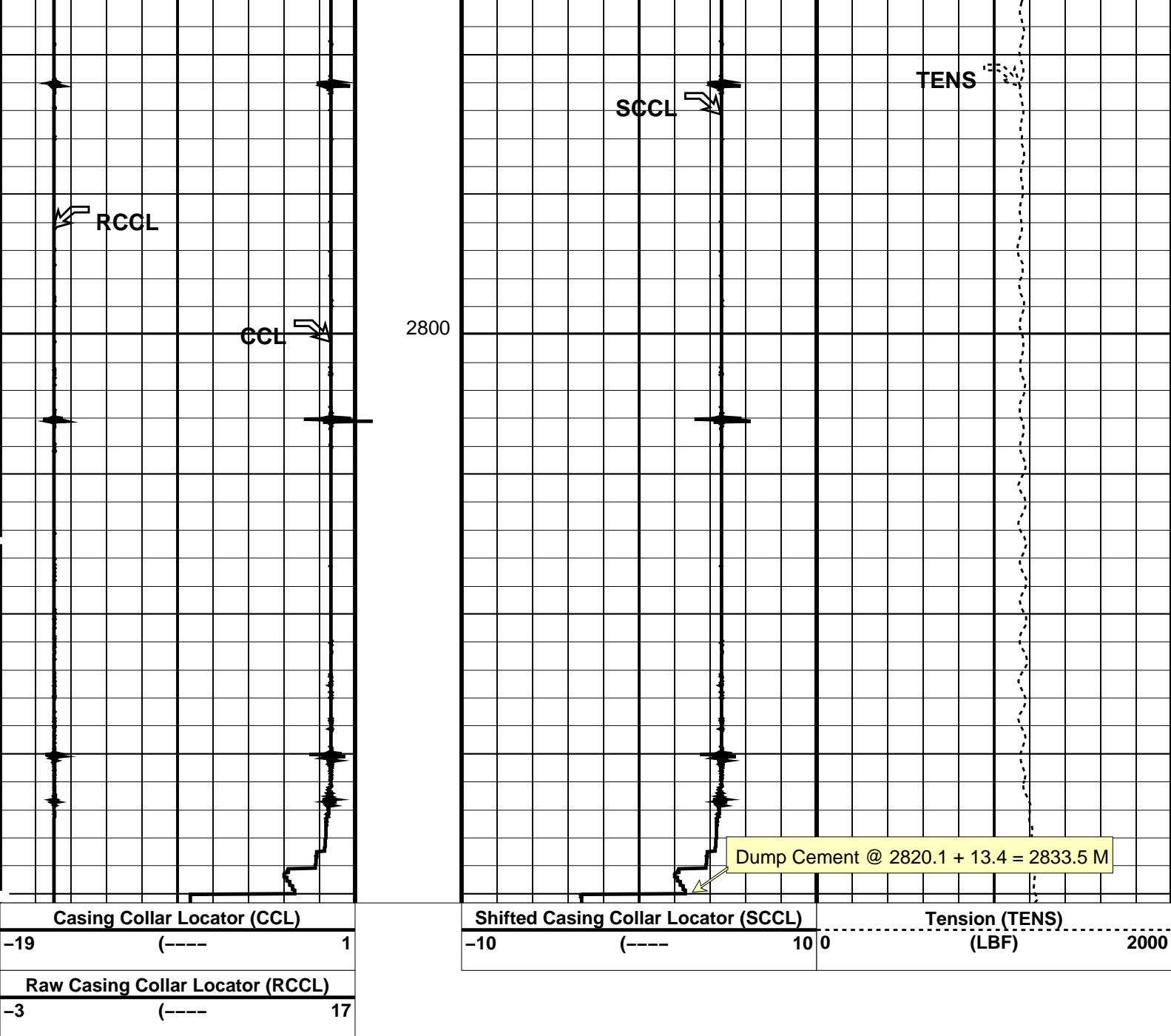
SHM_GUN SRPC-3357-Q2_2007 CCL-L 15C0-309

PIP SUMMARY

└─ Casing Collars

Time Mark Every 60 S





PIP SUMMARY

← Casing Collars

Time Mark Every 60 S

Parameters

DLIS Name	Description	Value
CCLD	CCL-L: Casing Collar Locator	12 IN
CCLT	CCL reset delay	0.9 V
	CCL Detection Level	
DO	System and Miscellaneous	0.0 M
PP	Depth Offset for Playback	
	Playback Processing	NORMAL

Format: CCLLog Vertical Scale: 1:200

Graphics File Created: 15-Sep-2007 21:17

OP System Version: 15C0-309
MCM

SHM_GUN SRPC-3357-Q2_2007 CCL-L 15C0-309

Input DLIS Files

DEFAULT Flip PERFO 0321UP PRODUCER 15-Sep-2007 21:13 2820.3 M 2746.2 M

Schlumberger

Bailer Run 1

MAXIS Field Log

PERFO2 Operational Summary Listing

Device	Status	Req Depth (M)	Obs Depth (M)	Time Used
Cement Bailer#1	Used	2834.0	2834.0	Sat Sep 15 17:52:01 2007

Company: Esso Australia Pty Ltd.

Well: FLA A5

Output DLIS Files

DEFAULTPERFO_026LUPFN:26PRODUCER15-Sep-2007 17:492823.7 M2757.5 M

OP System Version: 15C0-309

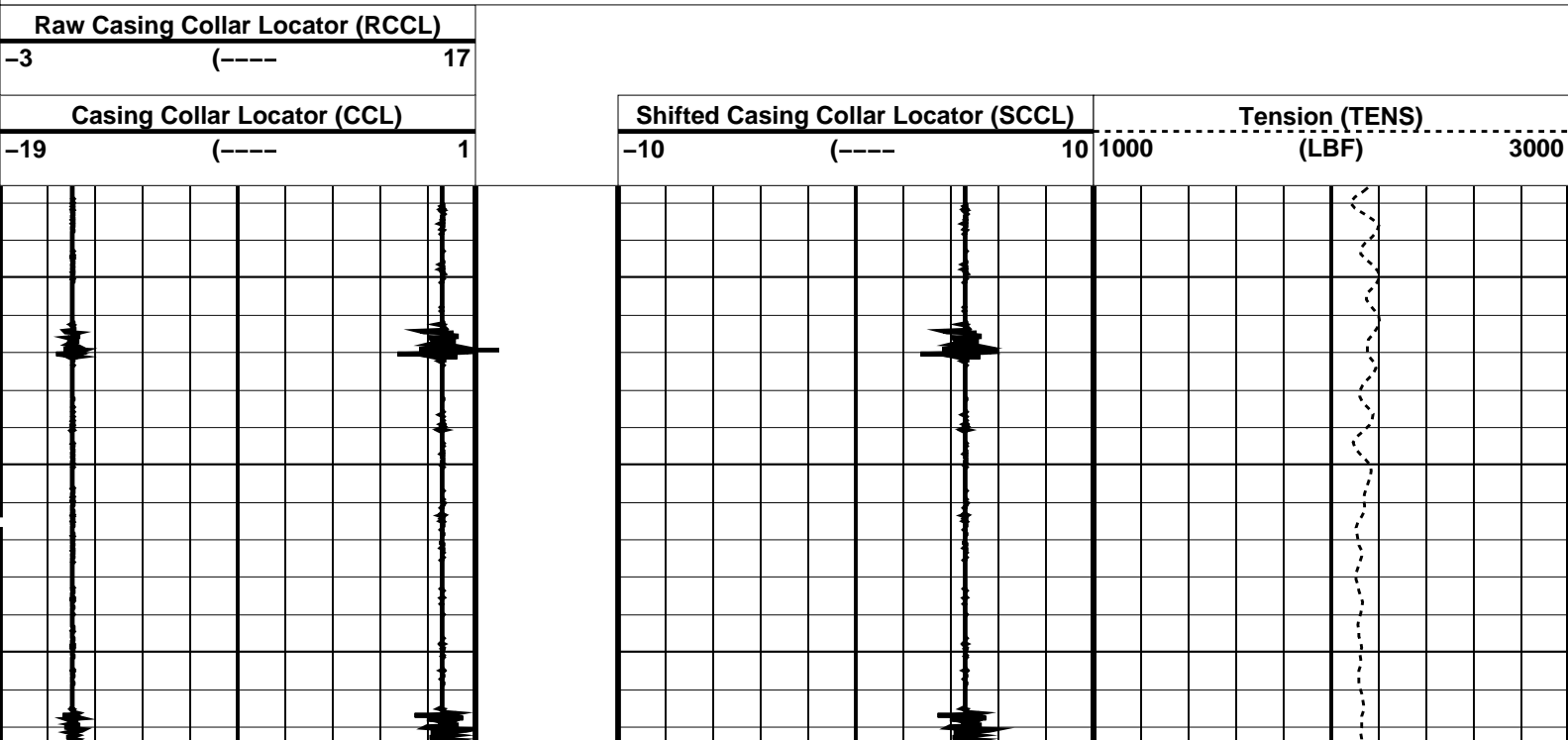
MCM

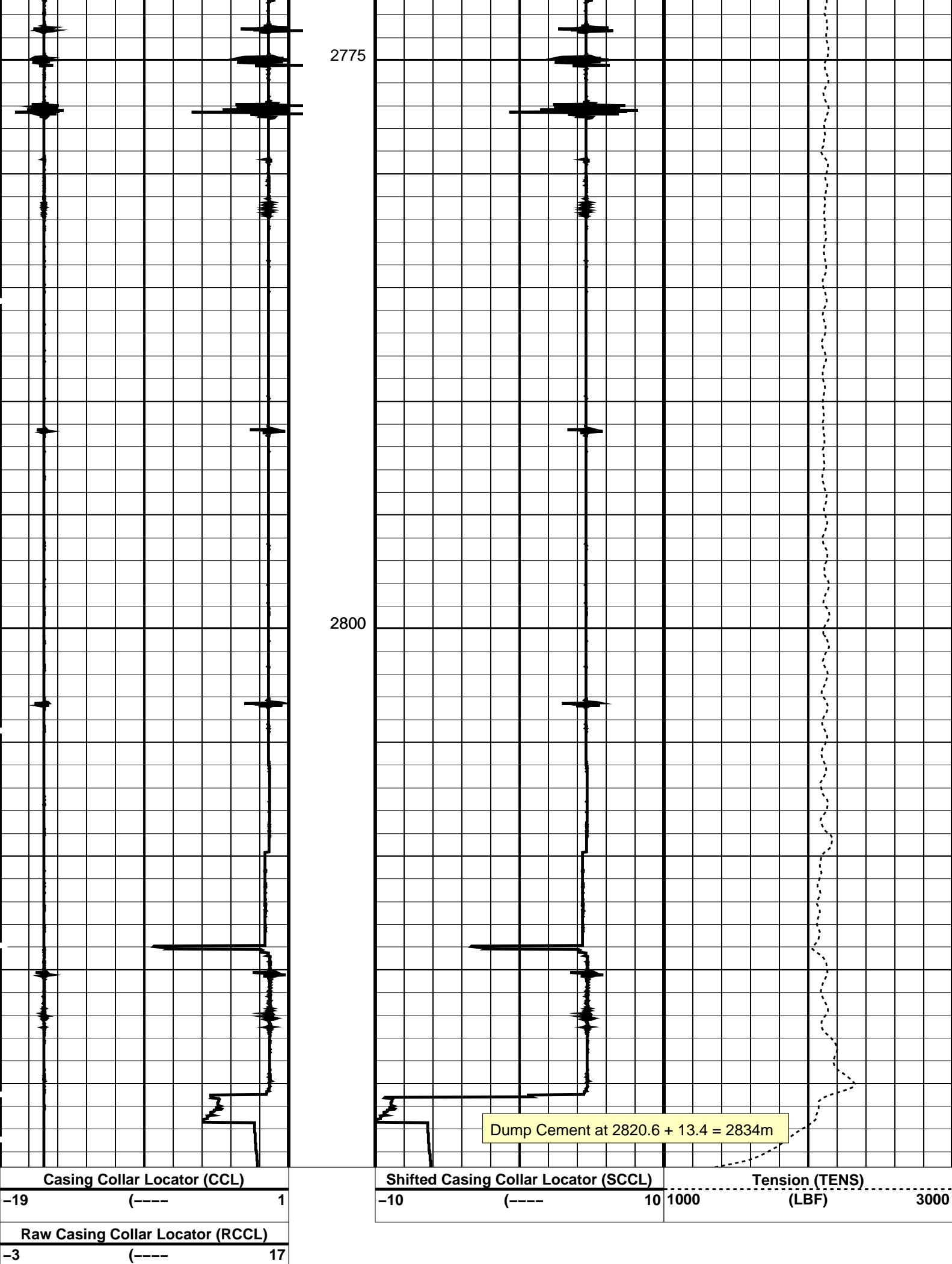
SHM_GUNSRPC-3357-Q2_2007CCL-L15C0-309

PIP SUMMARY

☐ Time Mark Every 60 S

☒ Casing Collars





PIP SUMMARY

Time Mark Every 60 S

Casing Collars

Parameters

DLIS Name	Description	Value
CCL-L: Casing Collar Locator		
CCLD	CCL reset delay	12 IN
CCLT	CCL Detection Level	0.9 V

Format: CCLLog Vertical Scale: 1:200 Graphics File Created: 15-Sep-2007 17:49

OP System Version: 15C0-309

MCM

SHM_GUN SRPC-3357-Q2_2007 CCL-L 15C0-309

Output DLIS Files

DEFAULT PERFO_026LUP FN:26 PRODUCER 15-Sep-2007 17:49

Schlumberger

Bailer Run 1 TAG MPBT

MAXIS Field Log

Company: Esso Australia Pty Ltd.

Well: FLA A5

Output DLIS Files

DEFAULT PERFO_025LUP FN:25 PRODUCER 15-Sep-2007 17:44 2824.0 M 2798.8 M

OP System Version: 15C0-309

MCM

SHM_GUN SRPC-3357-Q2_2007 CCL-L 15C0-309

PIP SUMMARY

Time Mark Every 60 S

Casing Collars

Raw Casing Collar Locator (RCCL)

-3 (----) 17

Casing Collar Locator (CCL)

-19 (----) 1

2800

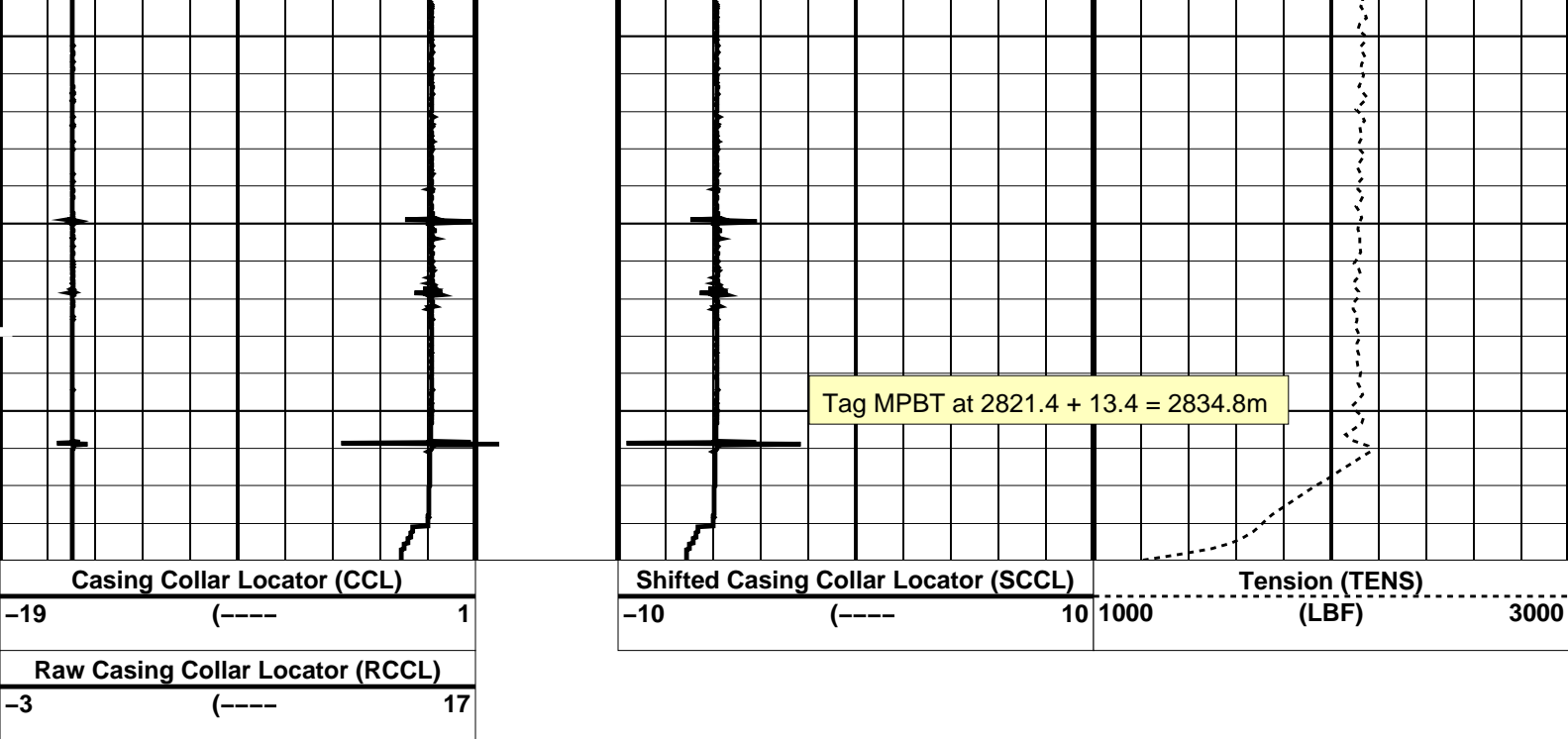
Shifted Casing Collar Locator (SCCL)

-10 (----) 10

Tension (TENS)

(LBF)

1000 3000



PIP SUMMARY

Time Mark Every 60 S

Casing Collars

Parameters		
DLIS Name	Description	Value
CCL-L: Casing Collar Locator		
CCLD	CCL reset delay	12 IN
CCLT	CCL Detection Level	0.9 V
Format: CCLLog Vertical Scale: 1:200		Graphics File Created: 15-Sep-2007 17:44

OP System Version: 15C0-309			
MCM			
SHM_GUN	SRPC-3357-Q2_2007	CCL-L	15C0-309

Output DLIS Files			
DEFAULT	PERFO_025LUP	FN:25 PRODUCER	15-Sep-2007 17:44



Bailer Run 1 WEG Correlation

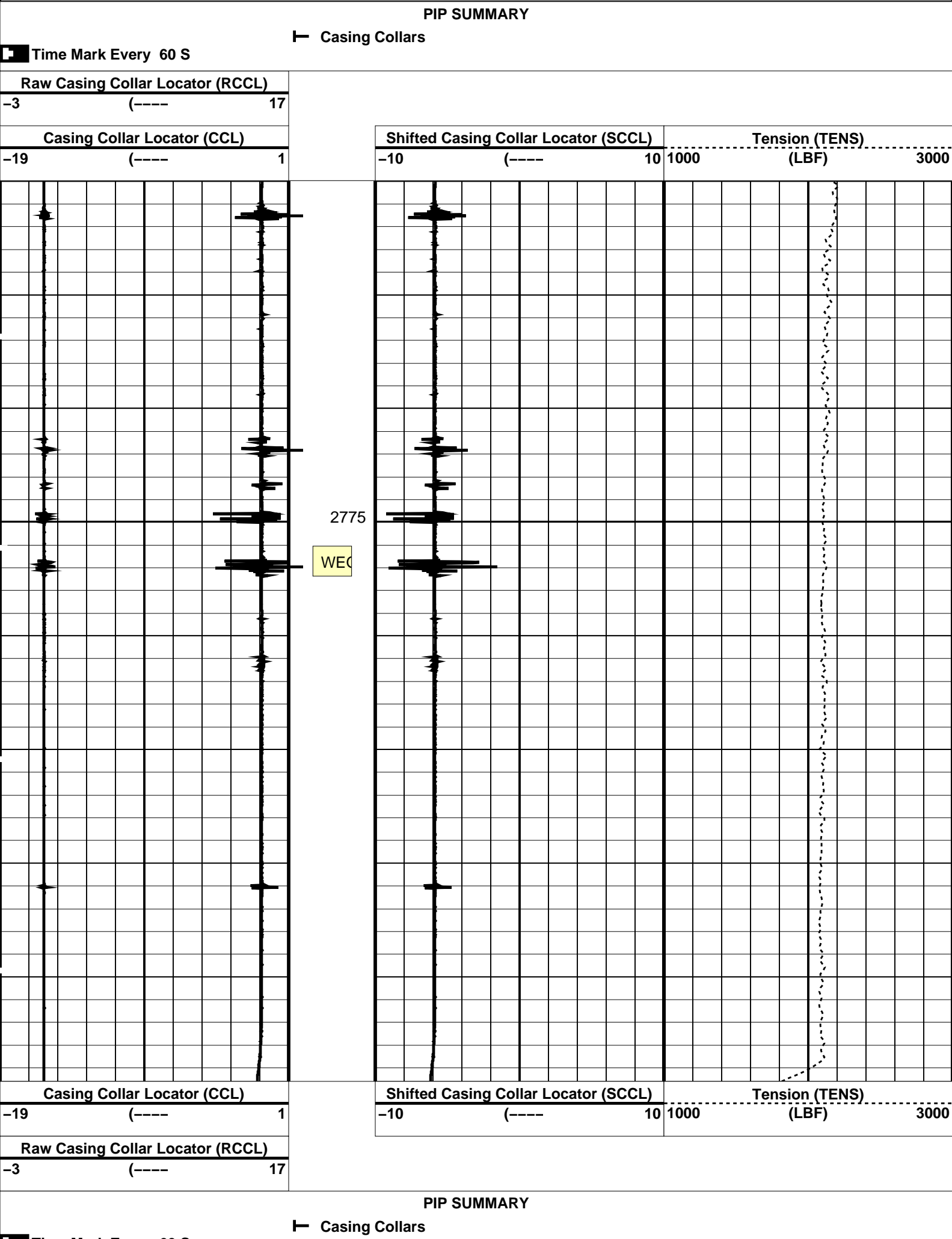
MAXIS Field Log

Company: Esso Australia Pty Ltd. Well: FLA A5

Output DLIS Files					
DEFAULT	PERFO_023LUP	FN:23	PRODUCER	15-Sep-2007 17:37	2799.6 M 2760.0 M

OP System Version: 15C0-309

MCM



Parameters

DLIS Name	Description	Value
-----------	-------------	-------

CCL-L: Casing Collar Locator		
CCLD	CCL reset delay	12 IN
CCLT	CCL Detection Level	0.9 V

Format: CCLLog Vertical Scale: 1:200

Graphics File Created: 15-Sep-2007 17:37

OP System Version: 15C0-309

MCM

SHM_GUN	SRPC-3357-Q2_2007	CCL-L	15C0-309
---------	-------------------	-------	----------

Output DLIS Files

DEFAULT	PERFO_023LUP	FN:23	PRODUCER	15-Sep-2007 17:37
---------	--------------	-------	----------	-------------------

Schlumberger

MPBT Log out Position

MAXIS Field Log

Company: Esso Australia Pty Ltd.

Well: FLA A17a

Output DLIS Files

DEFAULT	CCL_016LUP	FN:16	PRODUCER	11-Sep-2007 09:48	2827.9 M	2716.8 M
---------	------------	-------	----------	-------------------	----------	----------

OP System Version: 15C0-309

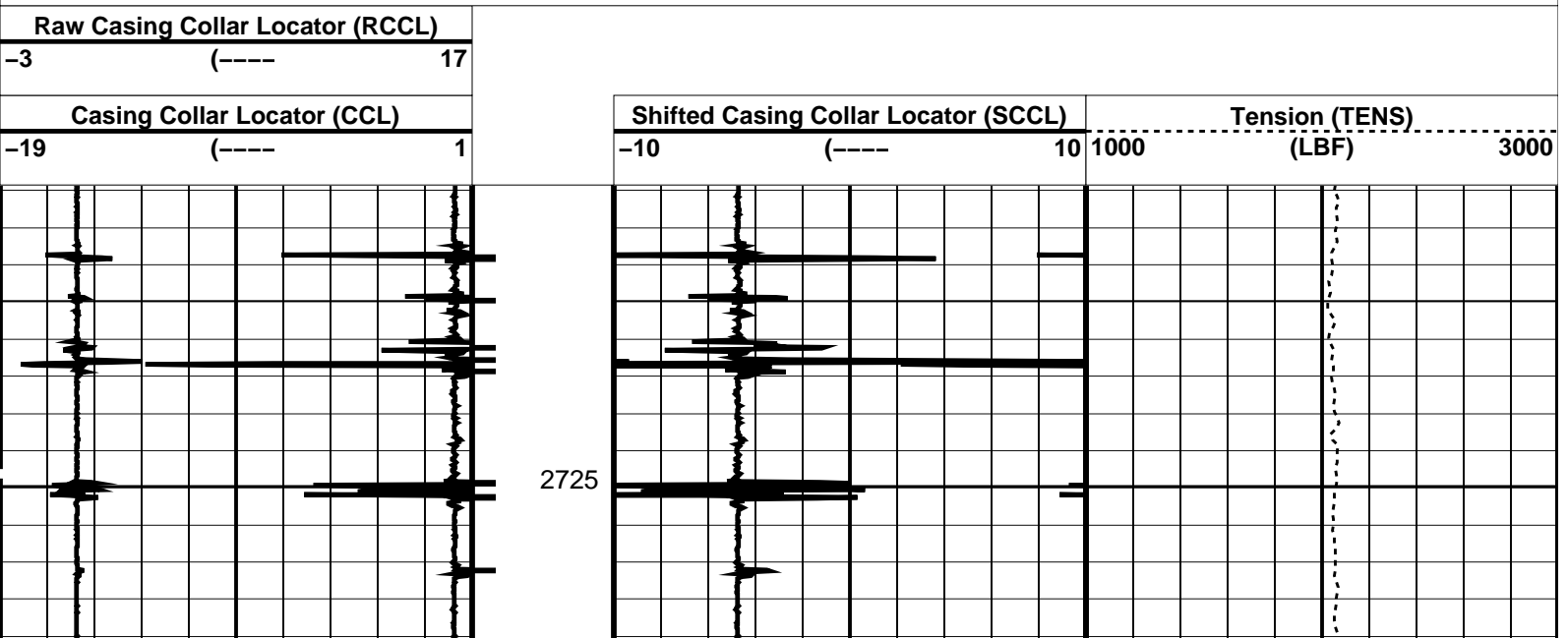
MCM

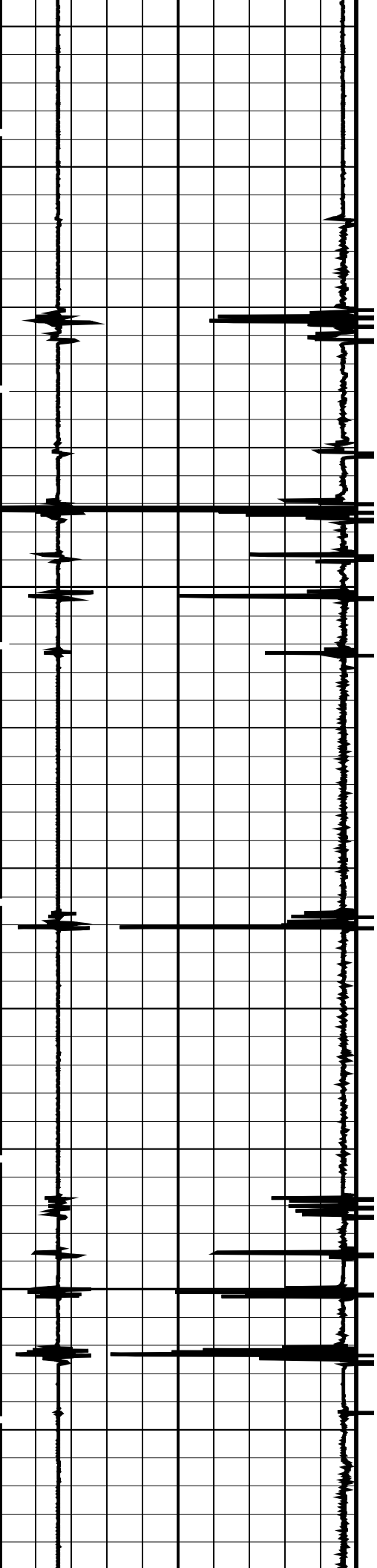
MPEX-DA	SRPC-3357-Q2_2007	MPSU-BA	SRPC-3357-Q2_2007
CCL-L	15C0-309		

PIP SUMMARY

└─ Casing Collars

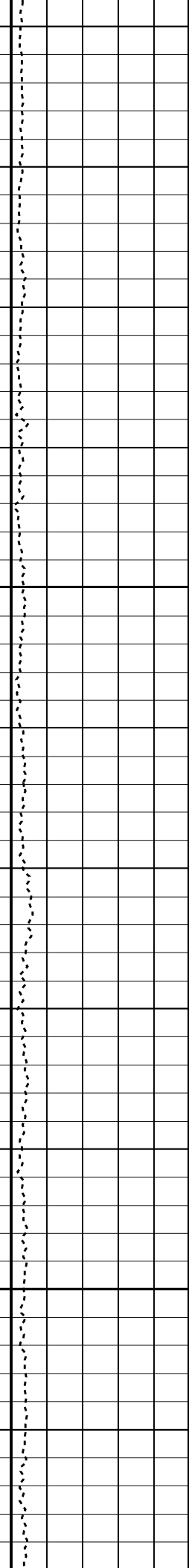
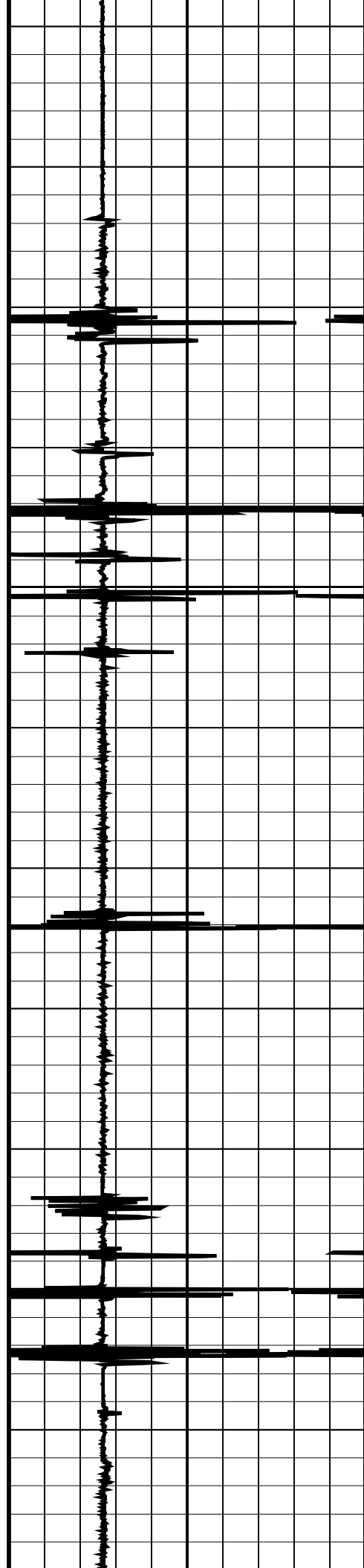
Time Mark Every 60 S

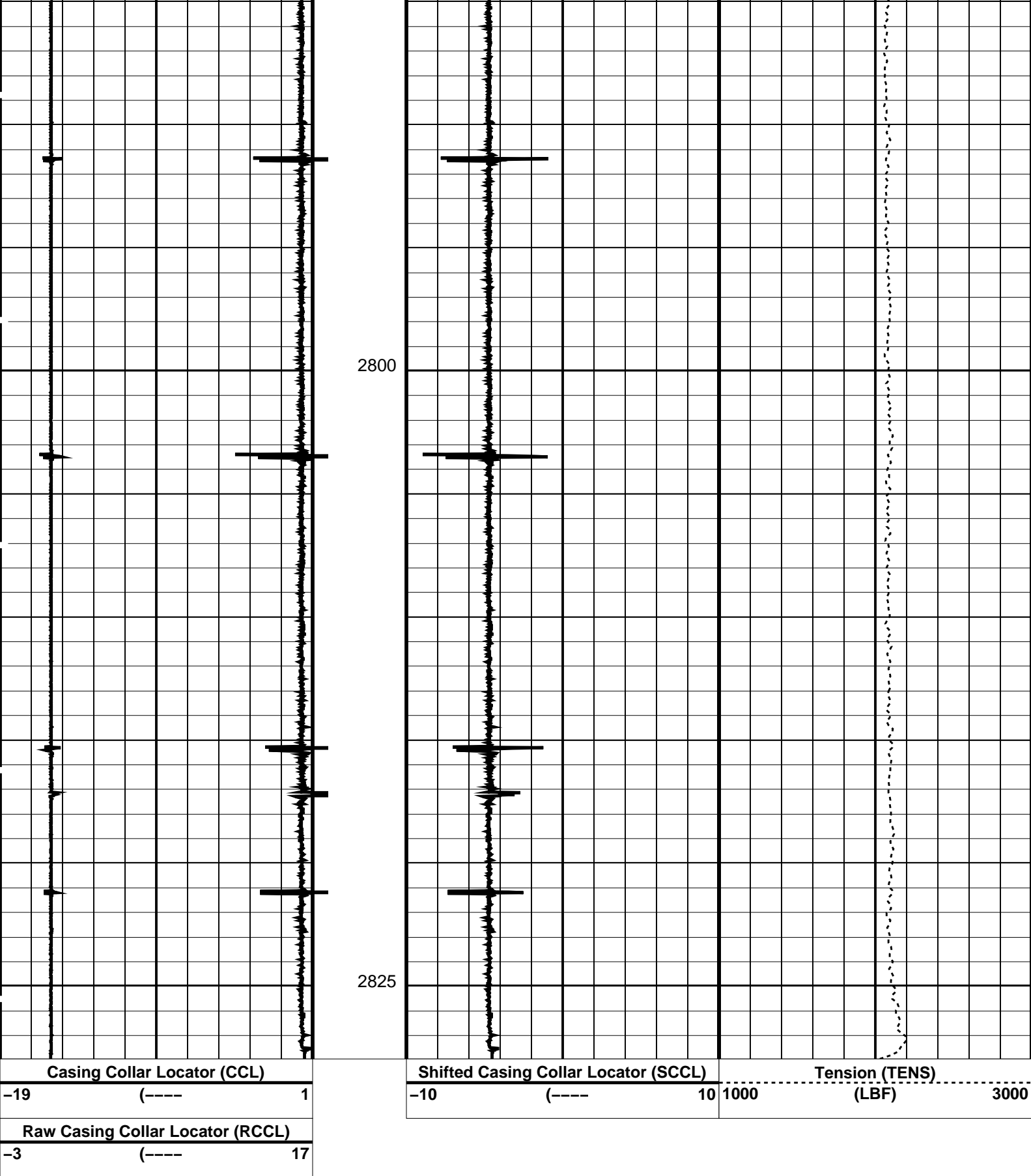




2750

2775





PIP SUMMARY

Time Mark Every 60 S

← Casing Collars

Parameters		
DLIS Name	Description	Value
CCLD	CCL-L: Casing Collar Locator CCL reset delay	12 IN

CCLT

CCL Detection Level

0.9 V

Format: CCLLogVertical Scale: 1:200Graphics File Created: 11-Sep-2007 09:48

OP System Version: 15C0-309MCM

MPEX-DA SRPC-3357-Q2_2007 MPSU-BA SRPC-3357-Q2_2007CCL-L 15C0-309

Output DLIS Files

DEFAULT CCL_016LUP FN:16 PRODUCER 11-Sep-2007 09:48

Schlumberger

MPBT Setting Station Log

MAXIS Field Log

PERFO2 Operational Summary Listing

Device	Status	Req Depth (M)	Obs Depth (M)	Time Used
MPEX	Used	2835.0	2835.0	Tue Sep 11 09:46:43 2007

Company: Esso Australia Pty Ltd.

Well: FLA A17a

Output DLIS Files

DEFAULT CCL_015LUP FN:15 PRODUCER 11-Sep-2007 08:56 12192.0 M 11441.9 M

OP System Version: 15C0-309MCM

MPEX-DA SRPC-3357-Q2_2007 MPSU-BA SRPC-3357-Q2_2007CCL-L 15C0-309

PIP SUMMARY

└ MPSU Run Time Every 1 MN

└ MPSU Run Time Every 10 MN

Time Mark Every 60 S

MPSU Head Voltage (HV)

250 (V) 350

Differential Tension (DTEN)

-240 (LBF) 160

Tension (TENS)

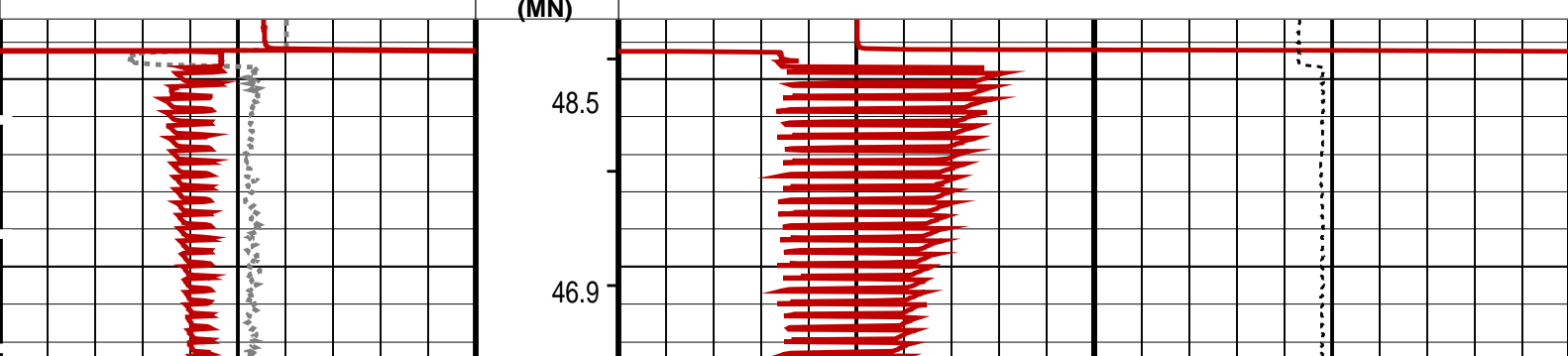
1000 (LBF) 3000

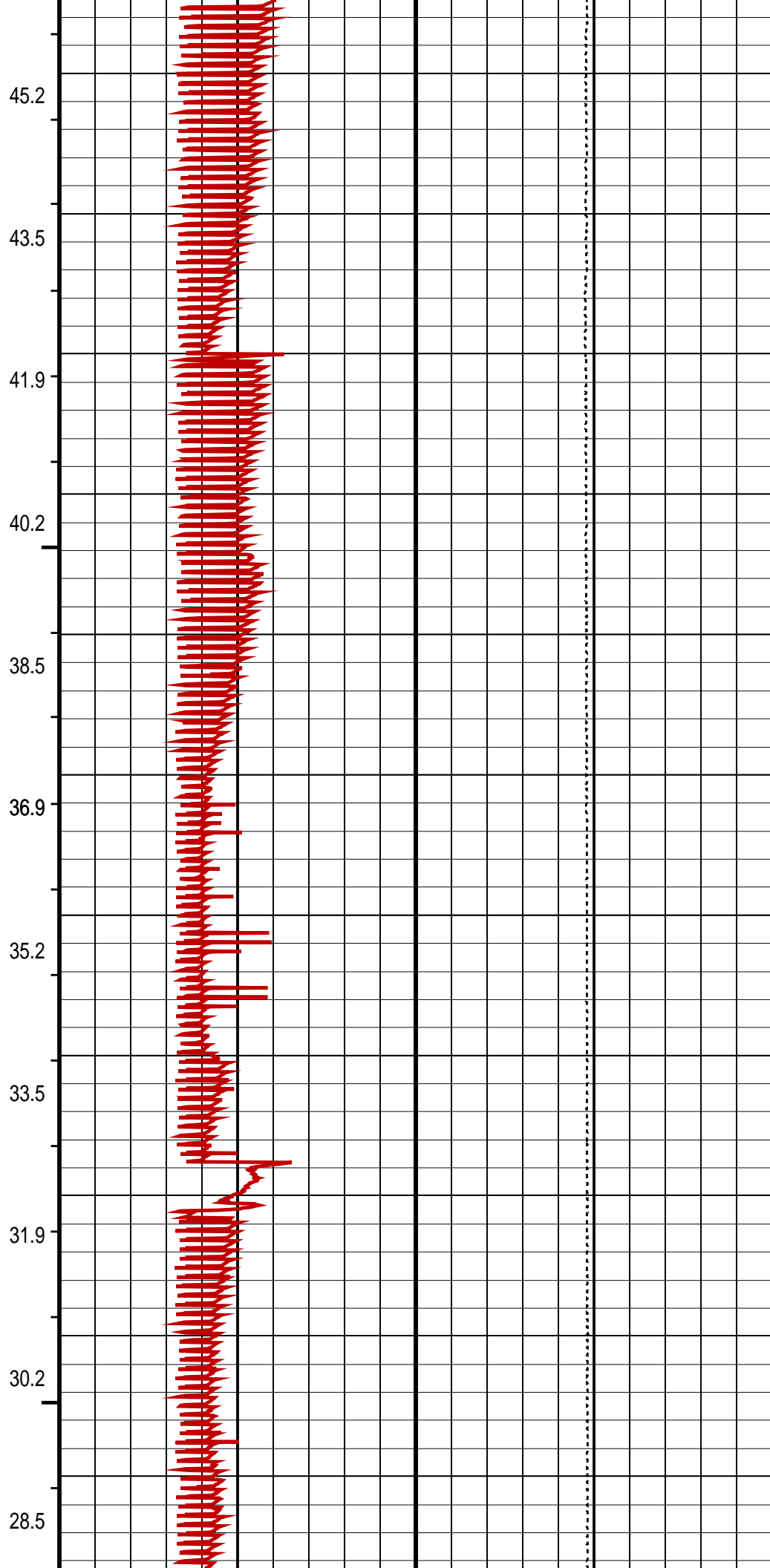
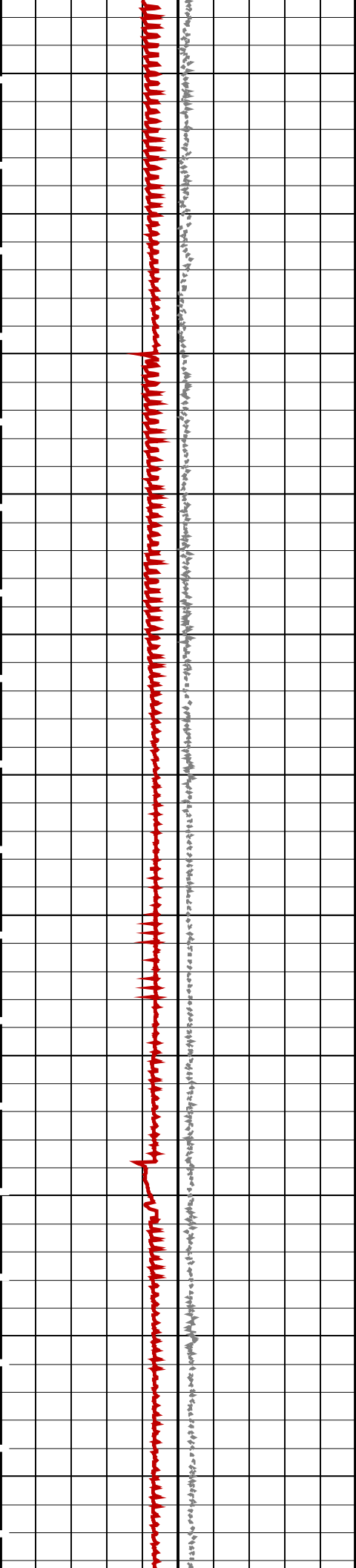
RUN Time (RTIM) (MN)

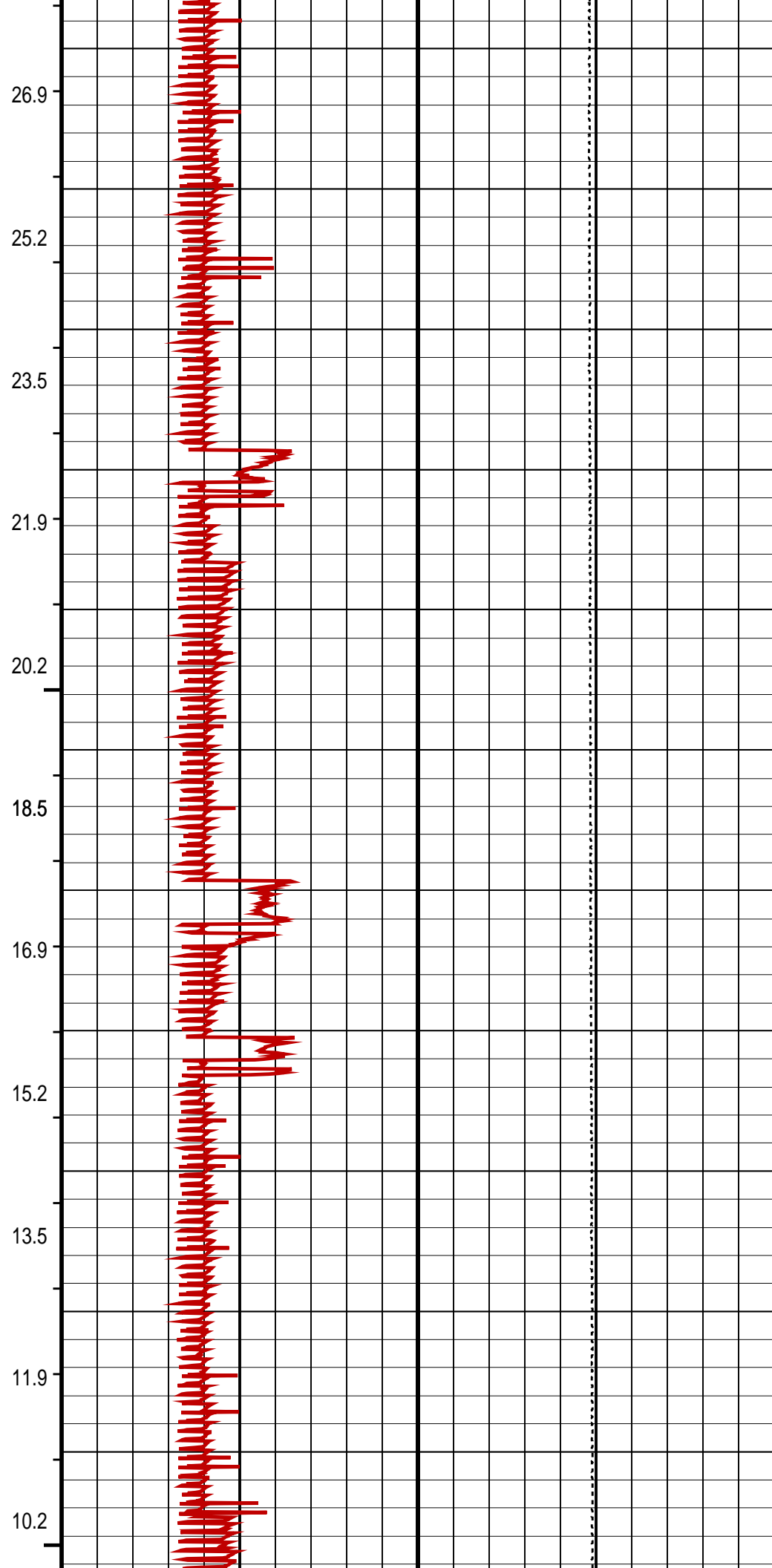
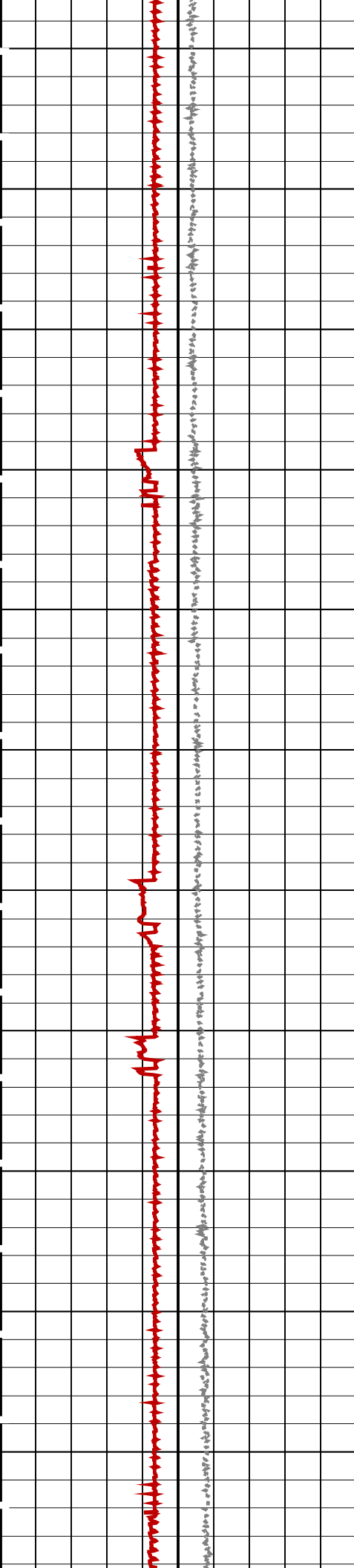
300 700

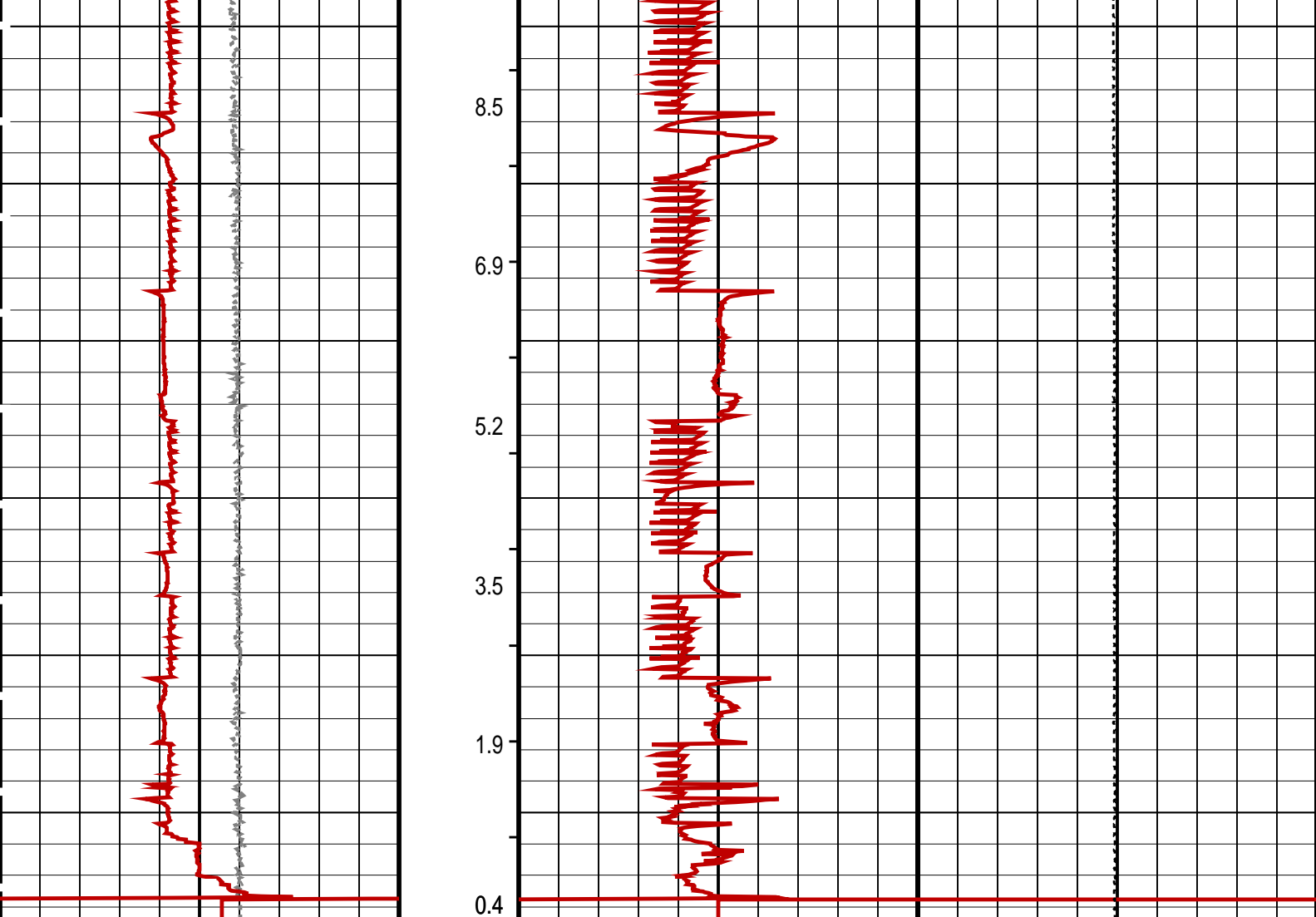
MPBM Cable Current (CCUR)

(MA)









Differential Tension (DTEN) (LBF)	MPSU Head Voltage (HV) (V)	RUN Time (RTIM) (MN)	MPBM Cable Current (CCUR) (MA)	Tension (TENS) (LBF)
-240 160	250 350	300 700	300 700	1000 3000

PIP SUMMARY				
└─ MPSU Run Time Every 1 MN				
└─ MPSU Run Time Every 10 MN				
Time Mark Every 60 S				

Parameters		
DLIS Name	Description	Value
MPSU-BA: MECHANICAL PLUGBACK SETTING UNIT		
IPUMP	Intensifier Pump	TRUE

Format: MPBT_2	Vertical Scale: 1:1000	Graphics File Created: 11-Sep-2007 08:56
----------------	------------------------	--

OP System Version: 15C0-309			
MCM			
MPEX-DA	SRPC-3357-Q2_2007	MPSU-BA	SRPC-3357-Q2_2007
CCL-L	15C0-309		

Output DLIS Files			
DEFAULT	CCL_015LUP	FN:15	PRODUCER 11-Sep-2007 08:56

MAXIS Field Log

Company: Esso Australia Pty Ltd.

Well: FLA A17a

Output DLIS Files

DEFAULT CCL_014LUP FN:14 PRODUCER 11-Sep-2007 08:53 2832.0 M 2828.1 M

OP System Version: 15C0-309

MCM

MPEX-DA SRPC-3357-Q2_2007
CCL-L 15C0-309

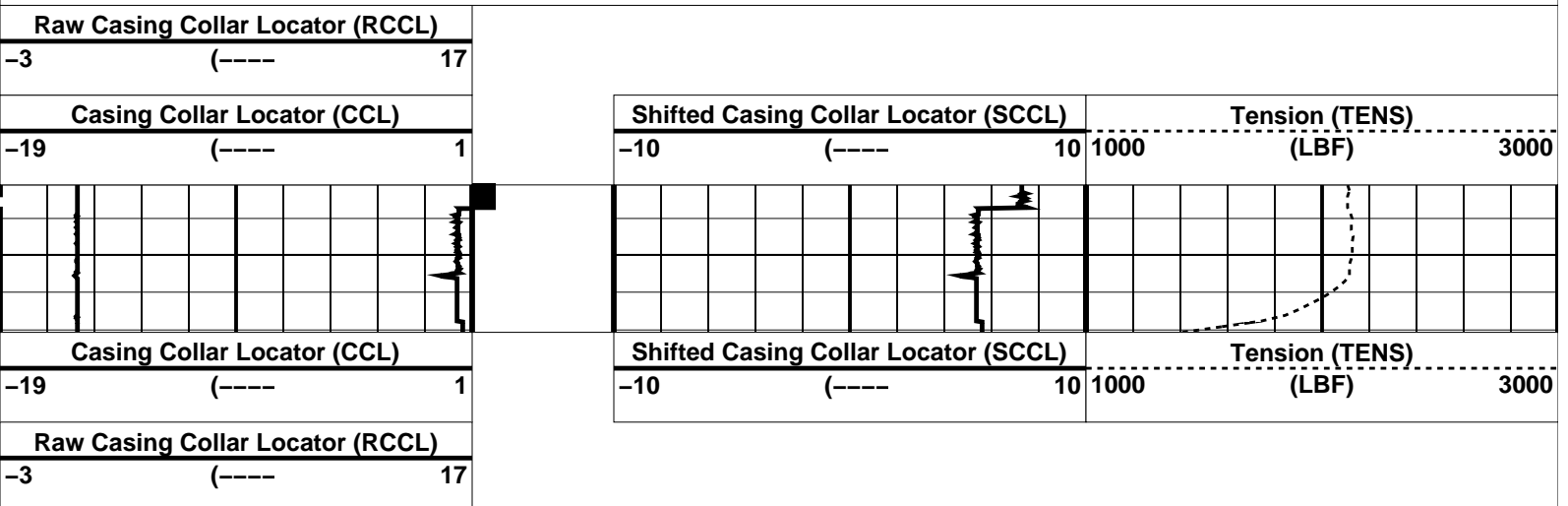
MPSU-BA

SRPC-3357-Q2_2007

PIP SUMMARY

Casing Collars

Time Mark Every 60 S



PIP SUMMARY

Casing Collars

Time Mark Every 60 S

Parameters

DLIS Name	Description	Value
CCL-L: Casing Collar Locator		
CCLD	CCL reset delay	12 IN
CCLT	CCL Detection Level	0.9 V

Format: CCLLog Vertical Scale: 1:200

Graphics File Created: 11-Sep-2007 08:53

OP System Version: 15C0-309

MCM

MPEX-DA SRPC-3357-Q2_2007
CCL-L 15C0-309

MPSU-BA

SRPC-3357-Q2_2007

Output DLIS Files

DEFAULT CCL_014LUP FN:14 PRODUCER 11-Sep-2007 08:53

Company: Esso Australia Pty Ltd. Well: FLA A17a

Output DLIS Files

DEFAULT CCL_012LUP FN:12 PRODUCER 11-Sep-2007 08:34 2831.9 M 2772.0 M

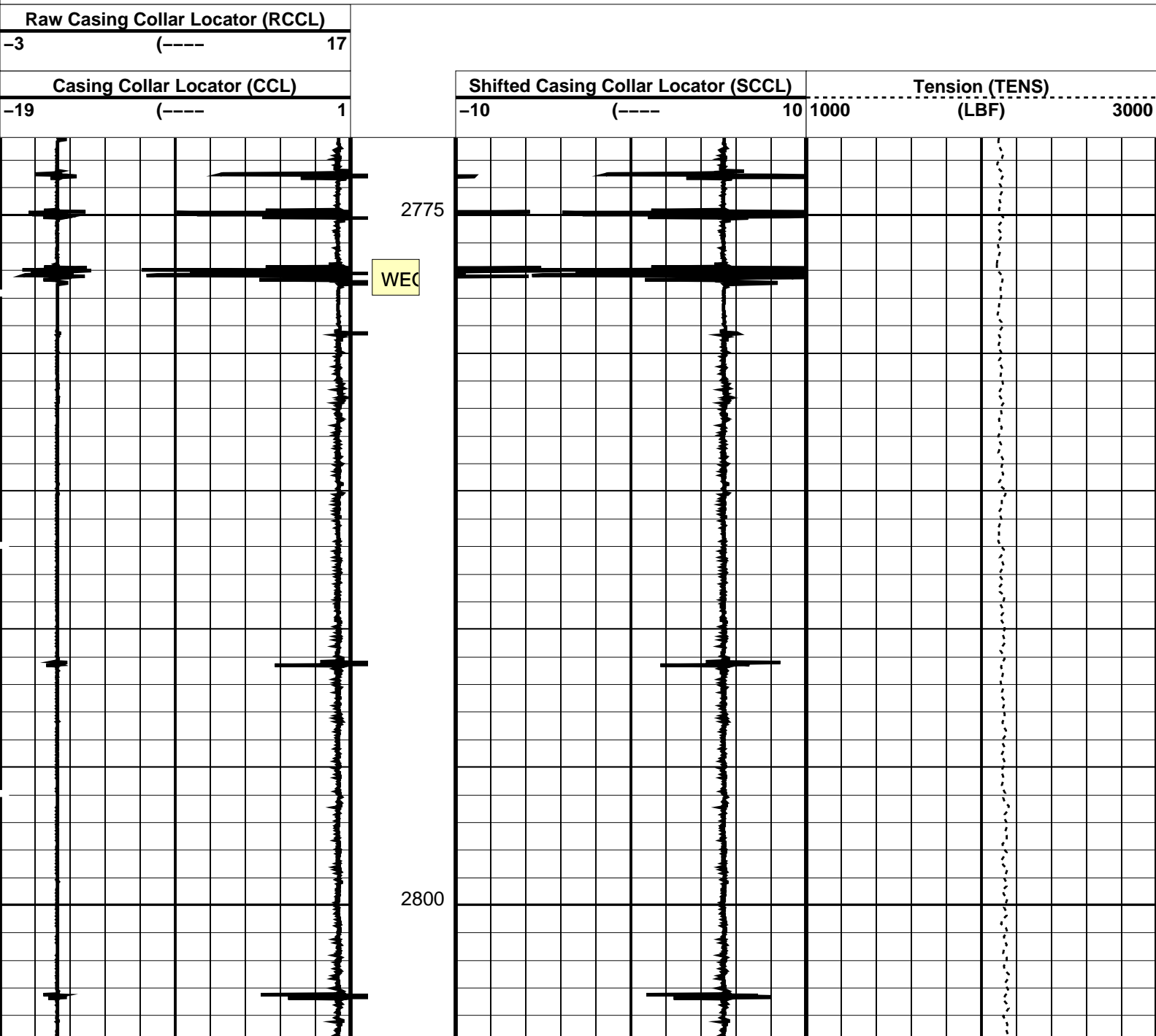
OP System Version: 15C0-309
MCM

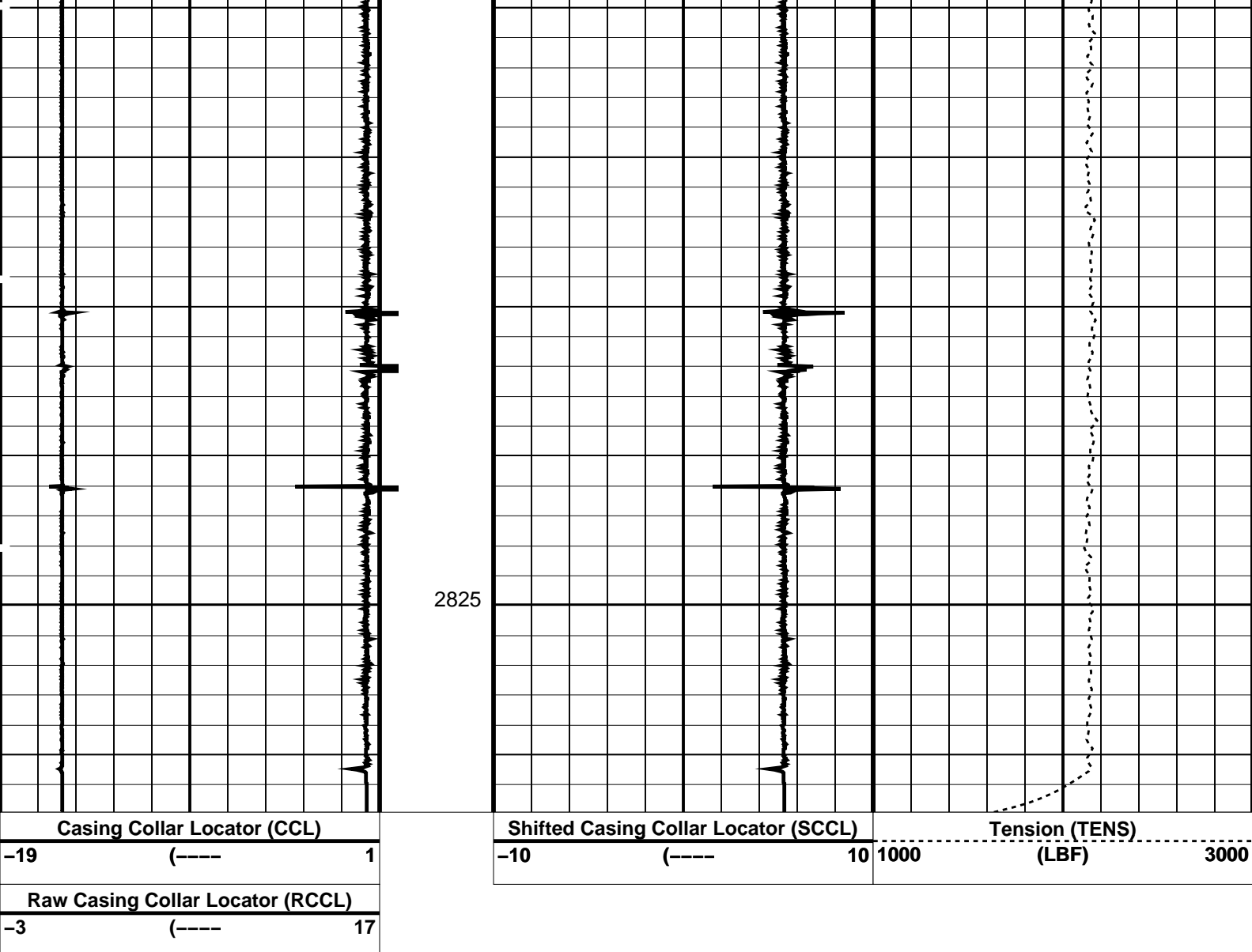
MPEX-DA SRPC-3357-Q2_2007 MPSU-BA SRPC-3357-Q2_2007
CCL-L 15C0-309

PIP SUMMARY

Casing Collars

Time Mark Every 60 S





PIP SUMMARY

└─ Casing Collars

Time Mark Every 60 S

Parameters

DLIS Name	Description	Value
CCLD	CCL-L: Casing Collar Locator	12 IN
CCLT	CCL reset delay	0.9 V
	CCL Detection Level	

Format: CCLLog Vertical Scale: 1:200

Graphics File Created: 11-Sep-2007 08:34

OP System Version: 15C0-309

MCM

MPEX-DA SRPC-3357-Q2_2007
CCL-L 15C0-309

MPSU-BA SRPC-3357-Q2_2007

Output DLIS Files

DEFAULT CCL_012LUP FN:12 PRODUCER 11-Sep-2007 08:34

Company: Esso Australia Pty Ltd.

Well: FLA A17a

Input DLIS Files

DEFAULTPSP_006LUP

FN:5PRODUCER10-Sep-2007 18:462851.9 M2723.7 M

Output DLIS Files

DEFAULTPSP_006PUP

FN:7PRODUCER10-Sep-2007 19:222846.4 M2725.4 M

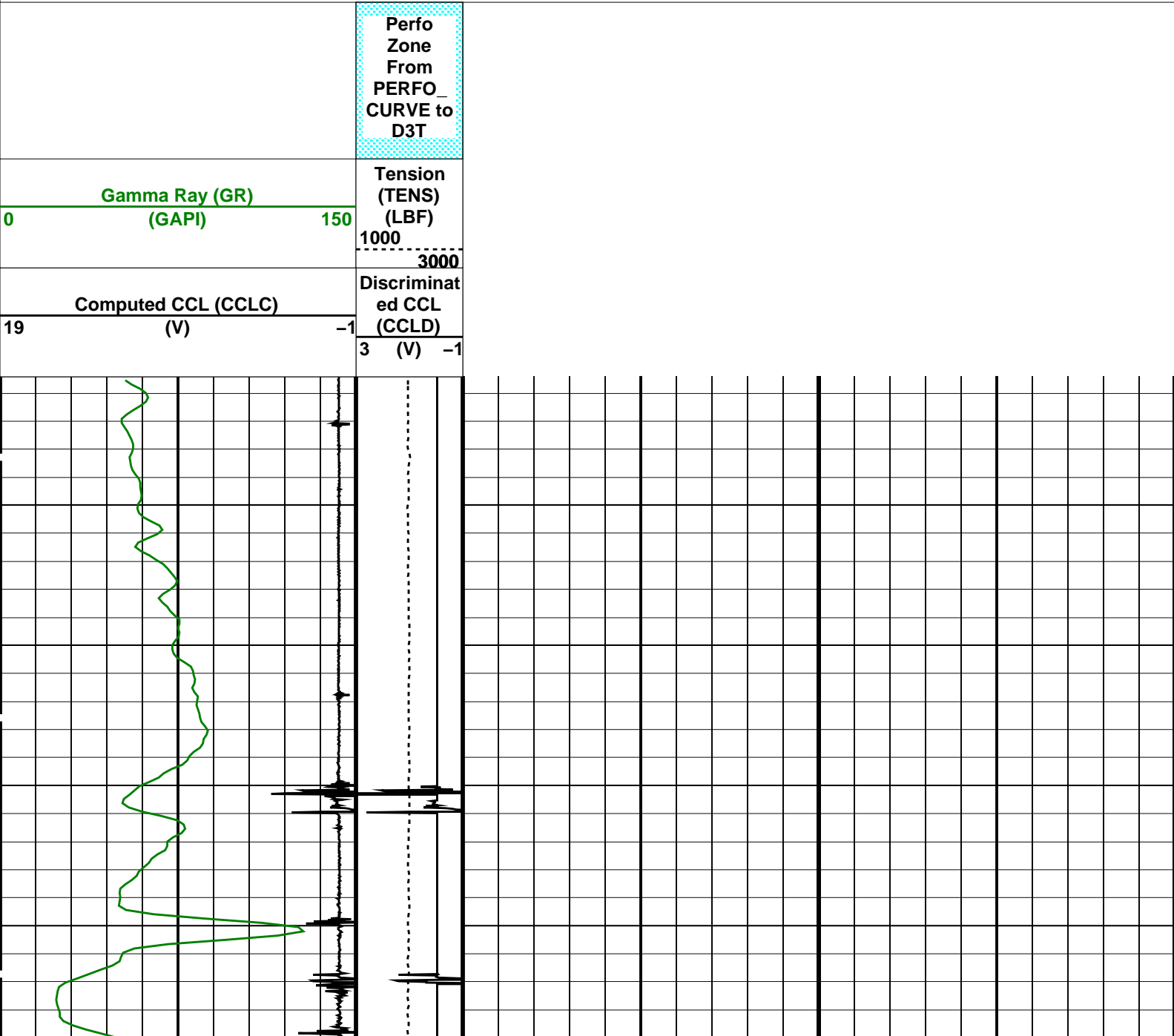
OP System Version: 15C0-309
MCM

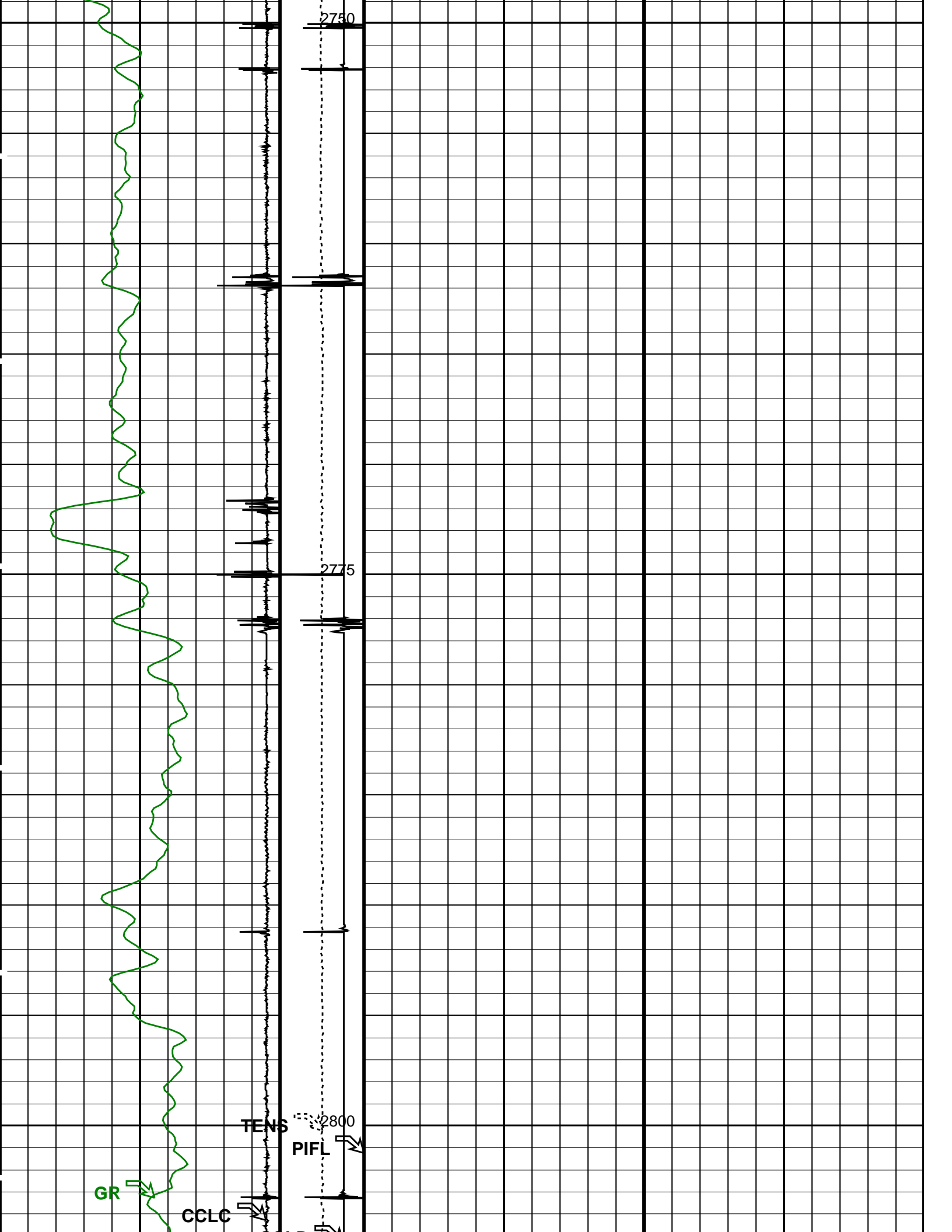
PSPT-B

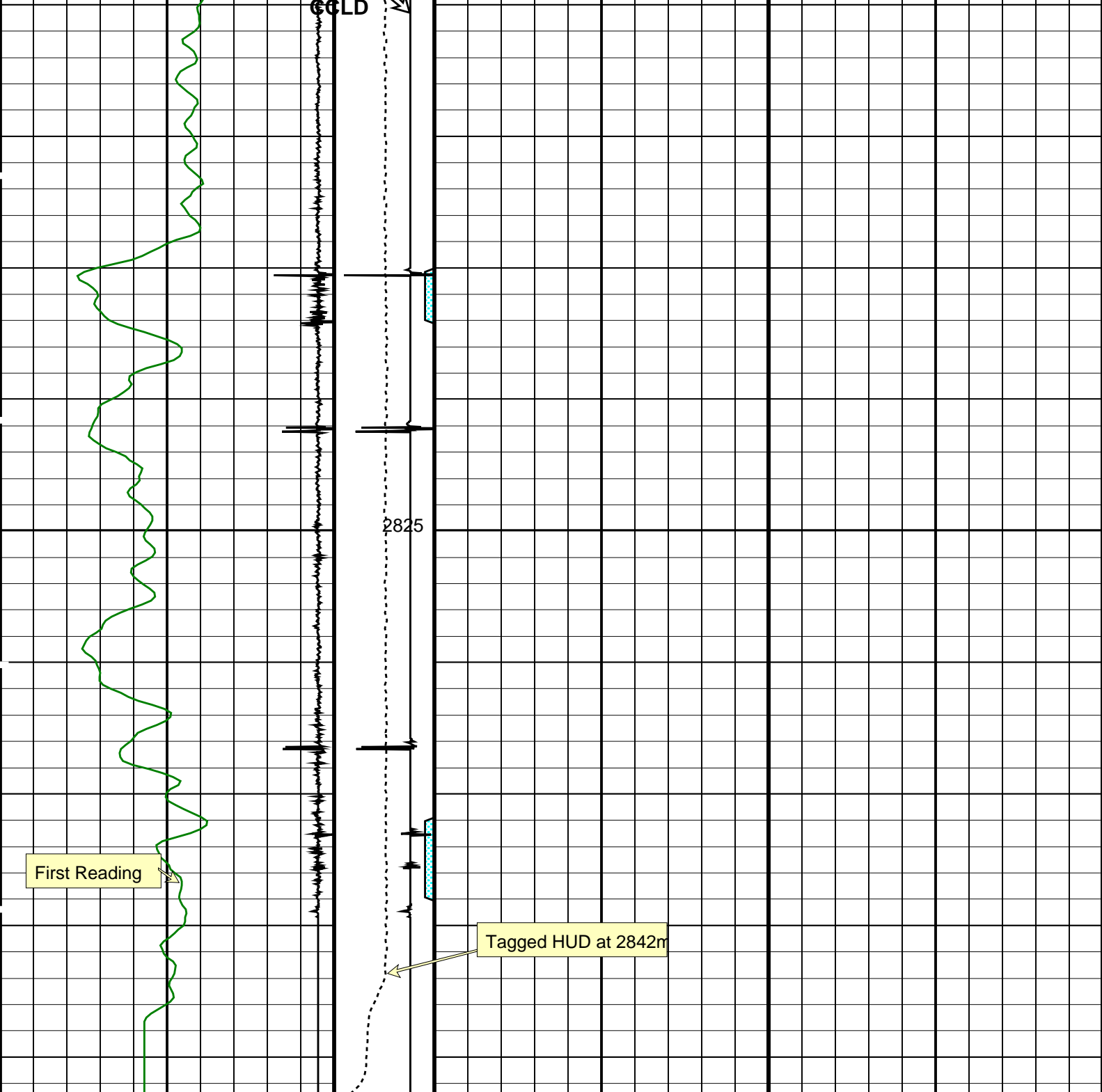
SRPC-3357-Q2_2007

PIP SUMMARY

☐ Time Mark Every 60 S








Computed CCL (CCLC)		Discriminat
19	(V)	ed CCL
		(CCLD)
		3 (V) -1
Gamma Ray (GR)		Tension
0	(GAPI)	(TENS)
		(LBF)
		1000
		3000
		Perfo
		Zone
		From
		PERFO_
		CURVE to
		D3T

Time Mark Every 60 S									
Format: PBMS Correlation				Vertical Scale: 1:200				Graphics File Created: 10-Sep-2007 19:22	
OP System Version: 15C0-309									
MCM									
PSPT-B		SRPC-3357-Q2_2007							
Parameters									
DLIS Name		Description						Value	
System and Miscellaneous									
DO		Depth Offset for Playback						-5.5	M
PP		Playback Processing						NORMAL	
Input DLIS Files									
DEFAULT	PSP_006LUP	FN:5	PRODUCER	10-Sep-2007 18:46	2851.9 M	2723.7 M			
Output DLIS Files									
DEFAULT	PSP_006PUP	FN:7	PRODUCER	10-Sep-2007 19:22					





Before Survey Calibration

MAXIS Field Log

Calibration and Check Summary							
Measurement	Nominal	Master	Before	After	Change	Limit	Units
Production Services Logging Platform Wellsite Calibration – Detector Calibration							
Before: 10-Sep-2007 16:30							
Gamma-Ray Jig-Bkg	165.0	N/A	156.8	N/A	N/A	N/A	GAPI

Production Services Logging Platform / Equipment Identification			
Primary Equipment:			
Production Logging Platform (CQG-F)	PSPT – B		
PSP Basic Measurement Sonde (CQG_F)	PBMS – B	1747	
PSP Basic measurement module	PBMS –		
PSP CCL	CCL –		
PSP GR	GR –		
PSP RTD Well Temperature	RTD_ –		
PSP Crystal Quartz Gauge Type F	CQG_ –		
PSP Telemetry and bus master cartridge	PSTC –	1768	
Auxiliary Equipment:			

Production Services Logging Platform Wellsite Calibration							
Detector Calibration							
Phase	Gamma-Ray Background GAPI		Value	Phase	Gamma-Ray Jig-Bkg GAPI		Value
Before			4.951	Before			156.8
0 (Minimum)		30.00 (Nominal)	120.0 (Maximum)	150.0 (Minimum)		165.0 (Nominal)	180.0 (Maximum)

Company: **Esso Australia Pty Ltd.**

Schlumberger

Well: **FLA A5**

Field: **Flounder**

Rig: **Prod 3 / Flounder**

Country: **Australia**

MPBT
Cement Bailers
10-Sep-2007