

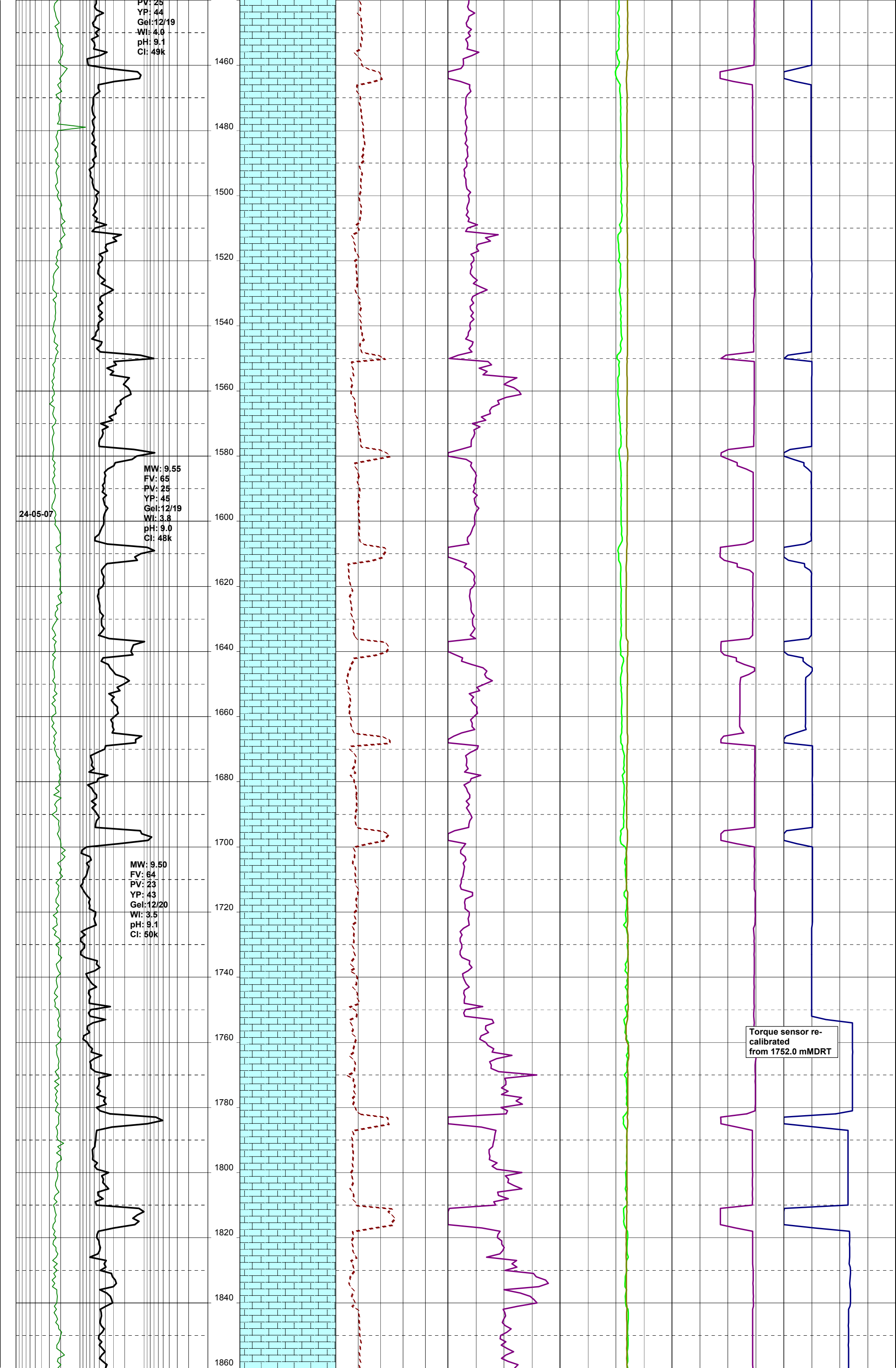
MW: 8.95
FV: 55
PV: 18
YP: 27
Gel: 10/13
WI: 4.8
pH: 8.8
CI: 44k

MW: 9.10
FV: 61
PV: 18
YP: 41
Gel: 11/17
WI: 4.6
pH: 8.8
CI: 45k

MW: 9.20
FV: 64
PV: 20
YP: 40
Gel: 11/18
WI: 4.2
pH: 8.9
CI: 45k

22-05-07





MW: 9.70
FV: 62
PV: 25
YP: 43
Gel: 12/20
WI: 3.4
pH: 8.9
Cl: 49k

MW: 9.70
FV: 59
PV: 27
YP: 44
Gel: 12/23
WI: 3.6
pH: 9.2
Cl: 40k

MW: 9.75
FV: 60
PV: 28
YP: 44
Gel: 12/21
WI: 3.8
pH: 8.9
Cl: 44k

25-05-07

1880
1900
1920
1940
1960
1980
2000
2020
2040
2060
2080
2100
2120
2140
2160
2180
2200
2220
2240
2260
2280

