

[illegible]

Company: Esso Australia Pty Ltd.

Well: F-8
Field: Cobia
Rig : Prod4 / Crane
Country: Australia

Gamma Ray
PSP SBHP
Survey

Field: Cobia
Location: Gippsland
Well: F-8
Company: Esso Australia Pty Ltd.

LOCATION			
Gippsland		Elev.:	K.B. 32.4 m
Basin			G.L. -79 m
Bass Strait			D.F. 32.4 m
Permanent Datum:	M.S.L.	Elev.:	0 m
Log Measured From:	D.F.	32.4 m	above Perm. Datum
Drilling Measured From:	D.F.		
State:	Max. Well Deviation	Longitude	Latitude
Victoria	55 deg	148 18'32.472"E	038 26'57.528"S

Logging Date	15-May-2007		
Run Number	One		
Depth Driller	3584 m		
Schlumberger Depth	3584 m		
Bottom Log Interval	3584 m		
Top Log Interval	3500 m		
Casing Fluid Type	Production Fluids		
Salinity			
Density			
Fluid Level	10 m		
BIT/CASING/TUBING STRING			
Bit Size	9.875 in		
From			
To			
Casing/Tubing Size	7.625 in		
Weight	29.7 lbm/ft		
Grade	N-80		
From	12.7 m		
To	3619 m		
Maximum Recorded Temperatures	107 degC		
Logger On Bottom	15-May-2007		10:30
Unit Number	889	Prod4 / Crane	
Recorded By	G Wright.		
Witnessed By	B White.		

	Run 1
Oil Density	
Water Salinity	
Gas Gravity	
Bo	
Bw	
1/Bg	
Bubble Point Pressure	
Bubble Point Temperature	
Solution GOR	
Maximum Deviation	55 deg
CEMENTING DATA	
Primary/Squeeze	Primary
Casing String No	
Lead Cement Type	
Volume	
Density	
Water Loss	
Additives	
Tail Cement Type	
Volume	
Density	
Water Loss	
Additives	
Expected Cement Top	
Logging Date	
Run Number	
Depth Driller	
Schlumberger Depth	
Bottom Log Interval	
Top Log Interval	
Casing Fluid Type	
Salinity	
Density	
Fluid Level	
BIT/CASING/TUBING STRING	
Bit Size	
From	
To	
Casing/Tubing Size	
Weight	
Grade	
From	
To	
Maximum Recorded Temperatures	
Logger On Bottom	
Unit Number	
Recorded By	
Witnessed By	

DEPTH SUMMARY LISTING

Date Created: 5-MAY-2007 7:45:09

Depth System Equipment

Depth Measuring Device		Tension Device		Logging Cable	
Type:	IDW-BE	Type:	PSDS/OSDS	Type:	2-32ZT
Serial Number:	6373	Serial Number:	325357	Serial Number:	24425
Calibration Date:	05-Jul-2006	Calibration Date:	26-Apr-2007	Length:	6590.08 M
Calibrator Serial Number:	9	Calibrator Serial Number:	1174	Conveyance Method: Wireline Rig Type: Rigless	
Calibration Cable Type:	2-32ZT	Calibration Gain:	0.91		
Wheel Correction 1:	-2	Calibration Offset:	217.00		
Wheel Correction 2:	-4				

Depth Control Parameters

Log Sequence:	Subsequent Log In the Well
Reference Log Name:	Solar Composite Correlation
Reference Log Run Number:	1
Reference Log Date:	

Depth Control Remarks

1. IDW used as primary depth control.
2. Z chart as secondary back-up.

DISCLAIMER

THE USE OF AND RELIANCE UPON THIS RECORDED-DATA BY THE HEREIN NAMED COMPANY (AND ANY OF ITS AFFILIATES, PARTNERS, REPRESENTATIVES, AGENTS, CONSULTANTS AND EMPLOYEES) IS SUBJECT TO THE TERMS AND CONDITIONS AGREED UPON BETWEEN SCHLUMBERGER AND THE COMPANY, INCLUDING: (a) RESTRICTIONS ON USE OF THE RECORDED-DATA; (b) DISCLAIMERS AND WAIVERS OF WARRANTIES AND REPRESENTATIONS REGARDING COMPANY'S USE OF AND RELIANCE UPON THE RECORDED-DATA; AND (c) CUSTOMER'S FULL AND SOLE RESPONSIBILITY FOR ANY INFERENCE DRAWN OR DECISION MADE IN CONNECTION WITH THE USE OF THIS RECORDED-DATA.

OTHER SERVICES1
OS1: None
OS2:
OS3:
OS4:
OS5:
REMARKS: RUN NUMBER 1
Log correlated to ExxonMobil Solar composite supplied with program.
Maximum well deviation = 55 degrees at 2850m MDKB.
Gamma Ray survey from HUD,3584m MDKB to 3500m MDKB.
SBHP and SBHT stations from 3558m to 0m MDKB.
SBHP = 3274 psia @ 3558m MDKB.
SBHT = 224 degf @ 3558m MDKB.
HUD = 3584m MDKB.

Crew : John Light & Chris Shiells.

RUN 1
SERVICE ORDER #: AusI07328219
PROGRAM VERSION: 14C0-302
FLUID LEVEL: 10 m

LOGGED INTERVAL	START	STOP

EQUIPMENT DESCRIPTION

RUN 1

SURFACE EQUIPMENT

WITM-A 3576
PSC_16MHZ 806

DOWNHOLE EQUIPMENT

AH-SWBS-B 761



4.91

AH-SWBS-B 762



4.22

AH-SWBS-B 763



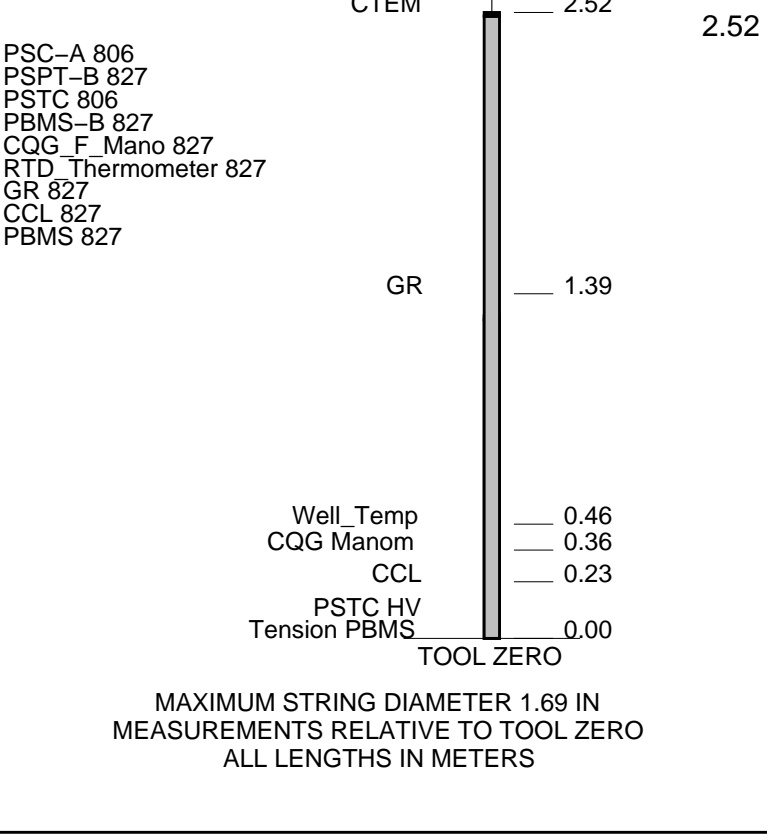
3.54

AH-SWHS-A

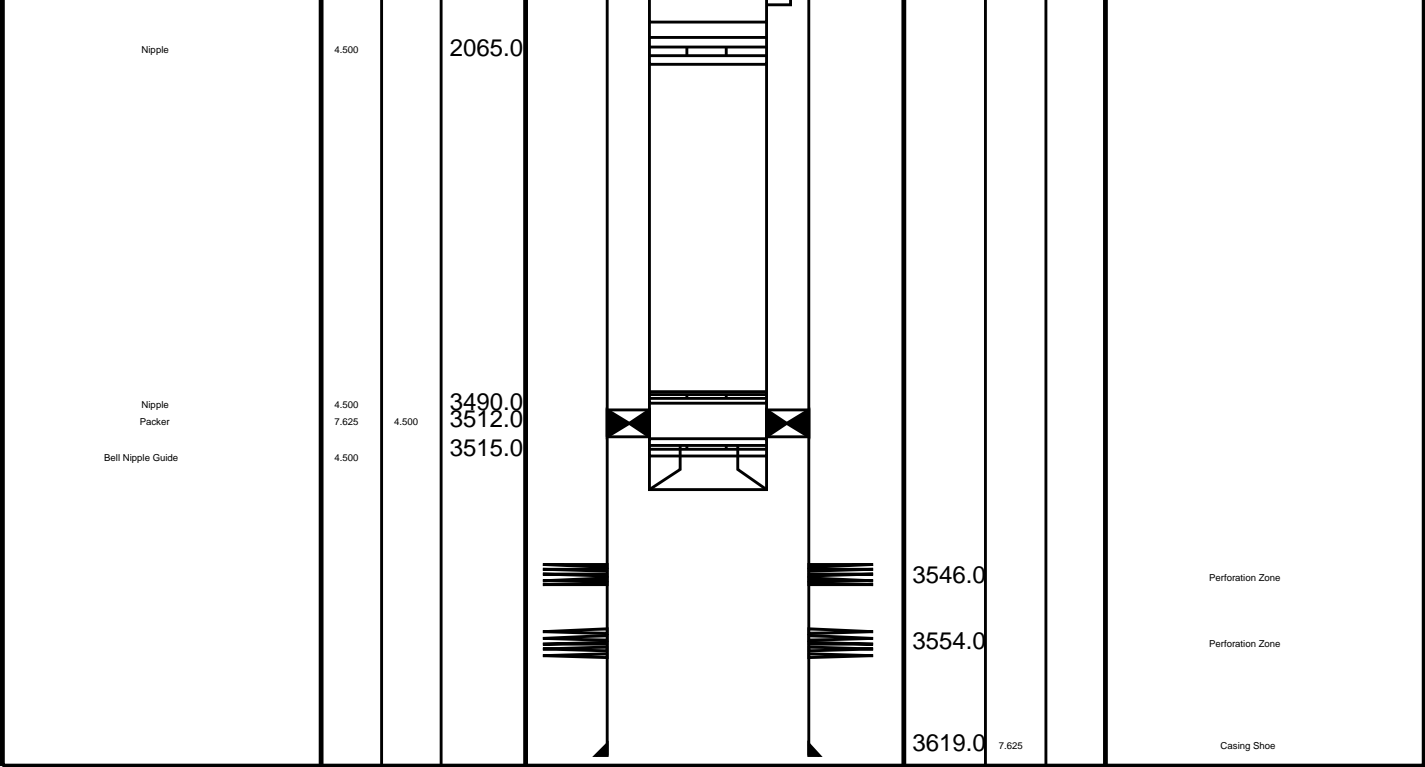


2.85

Detail MT
TelStatus
CUT 1

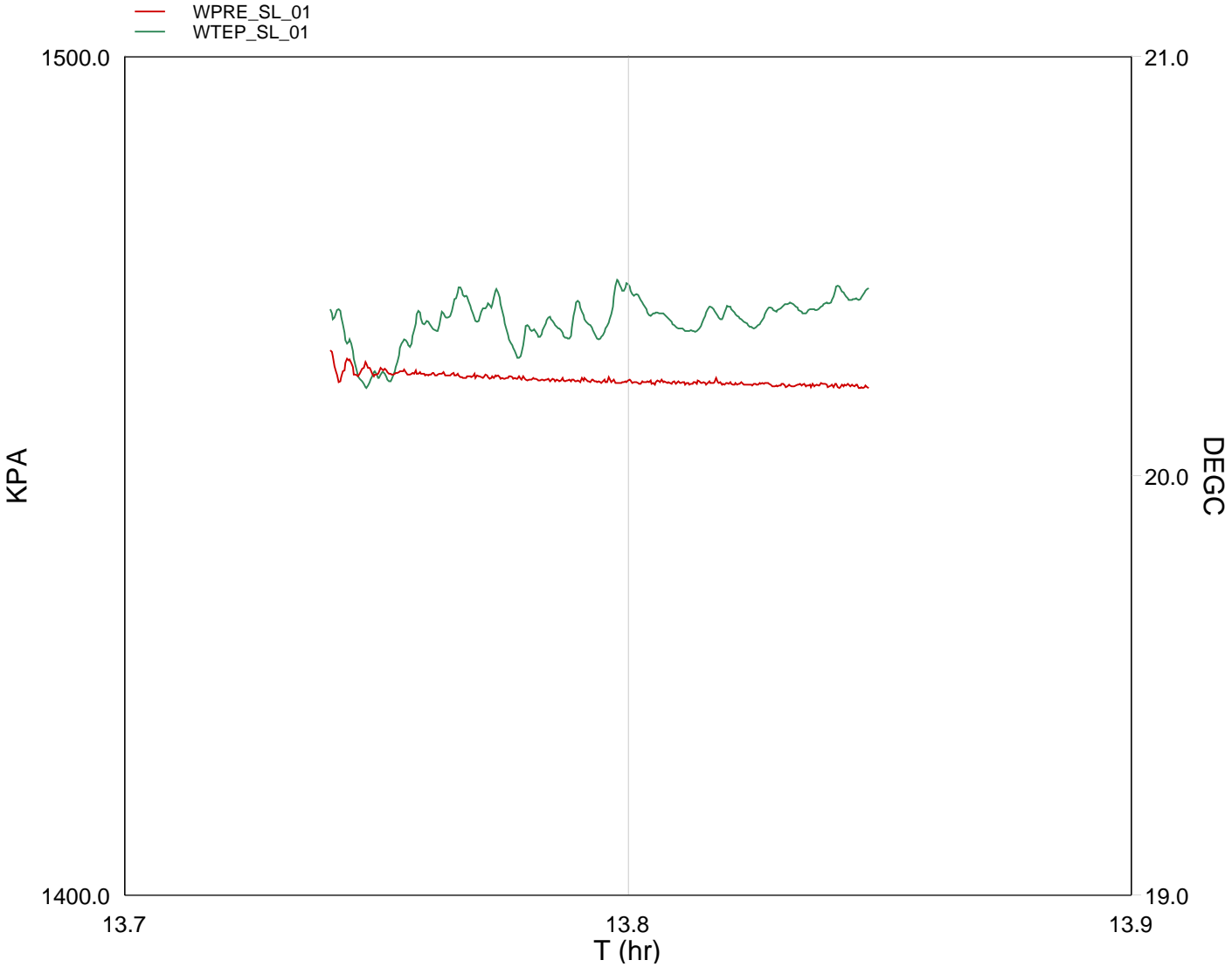


Production String	(in)		(m)	Well Schematic	(m)	(in)		Casing String
	OD	ID	MD		MD	OD	ID	
Tubing Hanger	7.625	4.500	10.0		12.7	7.625		Casing String
					12.7	10.750	7.625	Liner Hanger
Shut-in Valve	4.500		455.0					
					674.3	10.750		Casing Shoe
Gas Lift Mandrel	4.500		1142.0					
Gas Lift Mandrel	4.500		1801.0					
Nipple	4.500		1815.0					
Gas Lift Mandrel	4.500		2050.0					



Schlumberger Job Event Summary

Time	Elapsed Time	Depth (M)	File
Simulated Log	15-May-2007 7:14 000:07		PSP_002LUP
Simulated Log	15-May-2007 7:42 000:06		PSP_003LUP
Station Log	15-May-2007 7:43 000:06	12181.9 - 0.8	PSP_004LTP
Log Pass (down)	15-May-2007 8:12 000:18	54.9 - 919.9	PSP_007LDP
Log Pass (down)	15-May-2007 8:31 000:52	992.6 - 3602.6	PSP_008LDP
Log Pass (up)	15-May-2007 9:23 000:12	3602.4 - 3497.4	PSP_009LUP
Log Pass (up)	15-May-2007 9:48 000:03	3558.1 - 3538.1	PSP_012LUP
Station Log	15-May-2007 9:55 000:11	3558.4 - 1.6	PSP_013LTP
Station Log	15-May-2007 10:09 000:10	3555.8 - 1.5	PSP_014LTP
Station Log	15-May-2007 10:21 000:11	3552.9 - 1.6	PSP_015LTP
Station Log	15-May-2007 10:37 000:14	3548.9 - 2.1	PSP_016LTP
Station Log	15-May-2007 10:56 000:17	3545.4 - 2.6	PSP_017LTP
Station Log	15-May-2007 11:32 000:08	3515.4 - 1.2	PSP_018LTP
Station Log	15-May-2007 11:54 000:07	3000.5 - 1.0	PSP_019LTP
Station Log	15-May-2007 12:36 000:10	2000.4 - 1.5	PSP_020LTP
Station Log	15-May-2007 13:11 000:09	1000.4 - 1.3	PSP_022LTP
Station Log	15-May-2007 13:41 000:09	12.4 - 1.0	PSP_023LTP

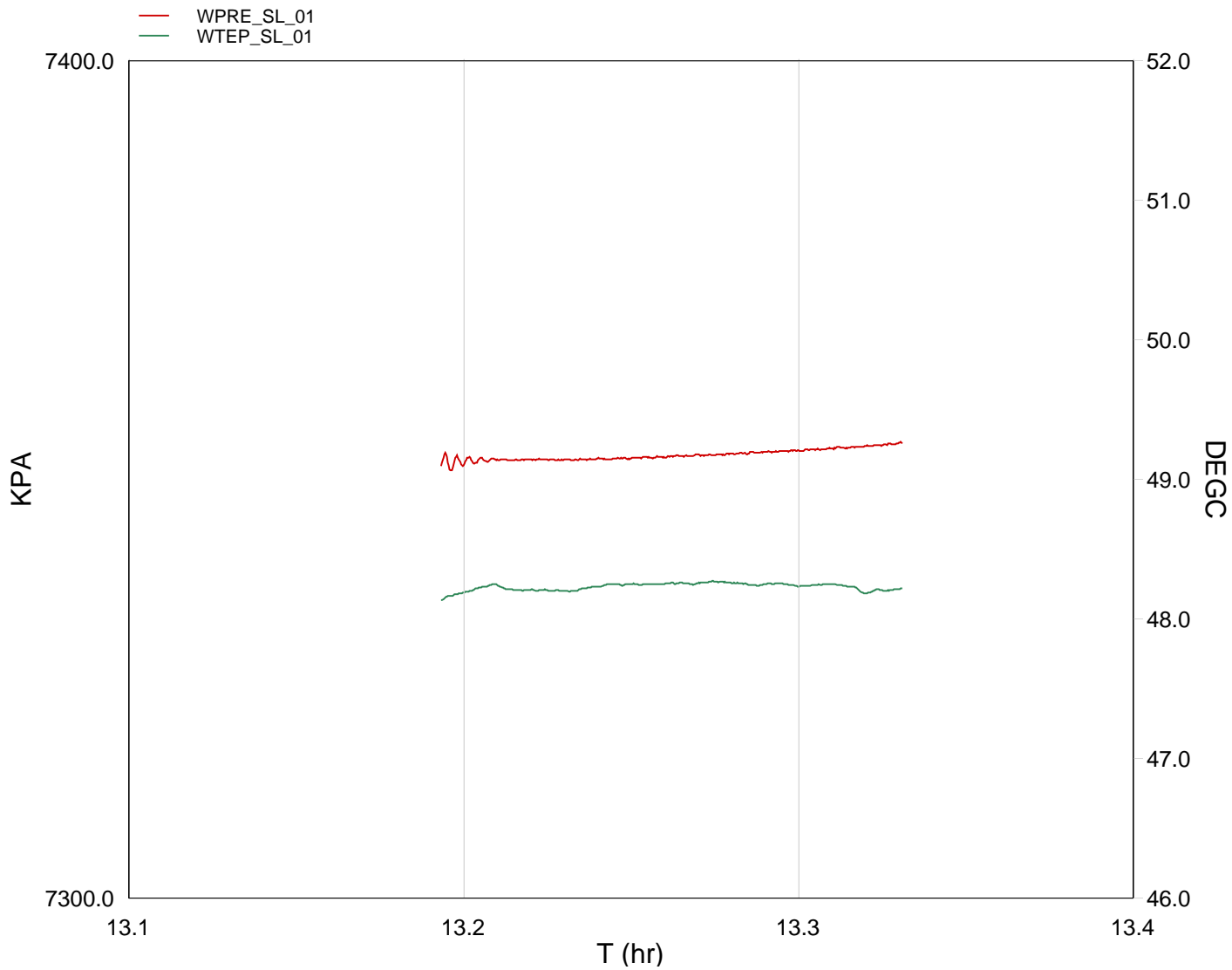


TIME	DEGF	PSIA
20010.0	68.7122	212.0532
20040.0	68.4226	212.1096
20070.0	68.6758	212.0727
20100.0	68.7780	212.0059
20130.0	68.6539	211.9881
20160.0	68.6720	211.9690
20190.0	68.6528	211.9442
20220.0	68.7955	211.9500
20250.0	68.6526	211.9260
20280.0	68.7084	211.9420
20310.0	68.6426	211.8889
20340.0	68.7140	211.8909
20370.0	68.8042	211.8510
20400.0	68.8315	211.8176



Static Station @
1000m MDKB 791.6m TVD

MAXIS Field Log



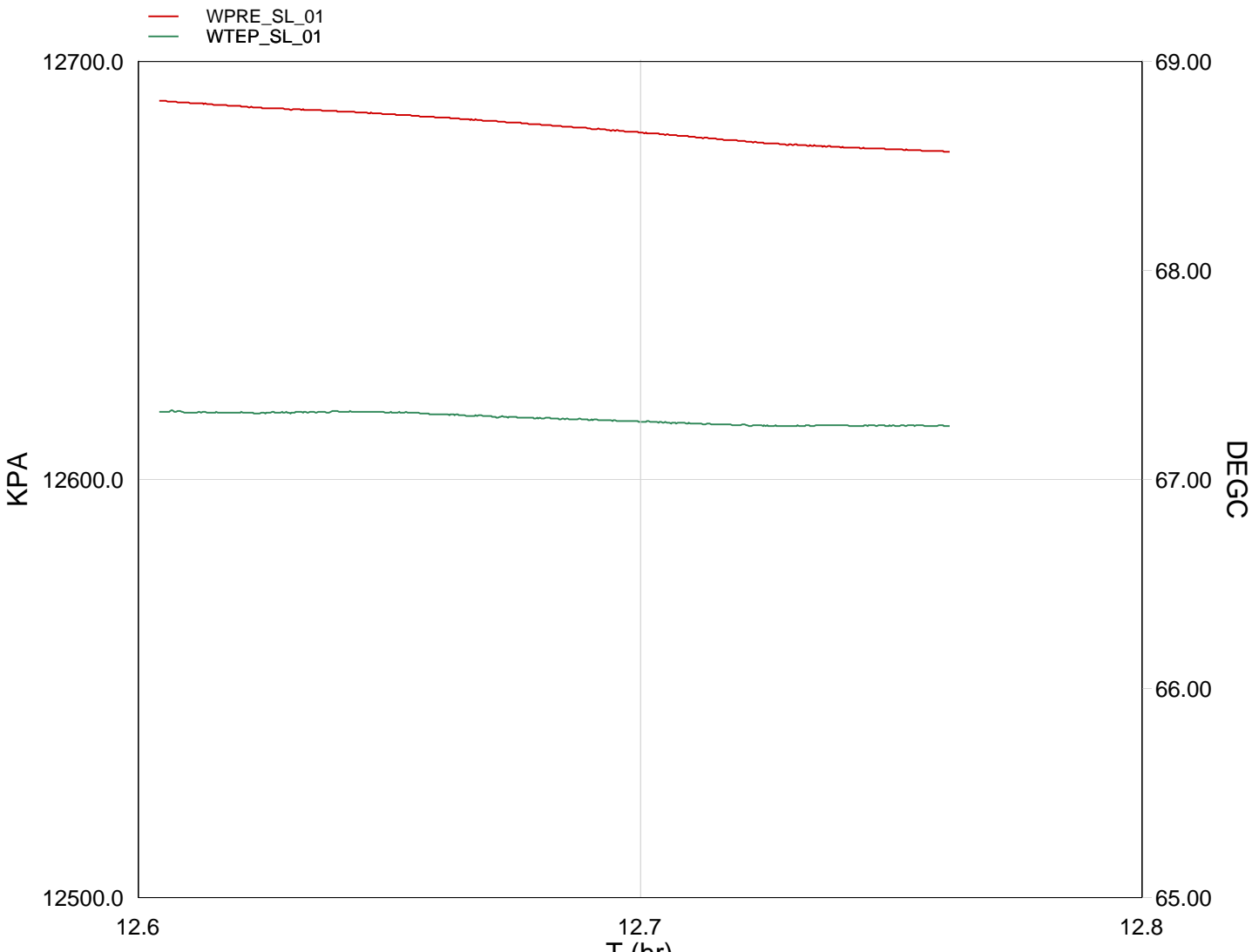
TIME	DEGF	PSIA
18030.0	118.7540	1068.6552
18060.0	118.7462	1066.3112
18090.0	118.8477	1066.3887
18120.0	118.7702	1066.3674
18150.0	118.7671	1066.3625
18180.0	118.7657	1066.3755

18210.0	118.8354	1066.3816
18240.0	118.8529	1066.4029
18270.0	118.8543	1066.4198
18300.0	118.8623	1066.4392
18330.0	118.8839	1066.4507
18360.0	118.8552	1066.4842
18390.0	118.8542	1066.4985
18420.0	118.8220	1066.5209
18450.0	118.8508	1066.5583
18480.0	118.8080	1066.5885
18510.0	118.7667	1066.6227
18540.0	118.8077	1066.6658



Static Station @
2000m MDKB 1398.8m TVD

MAXIS Field Log

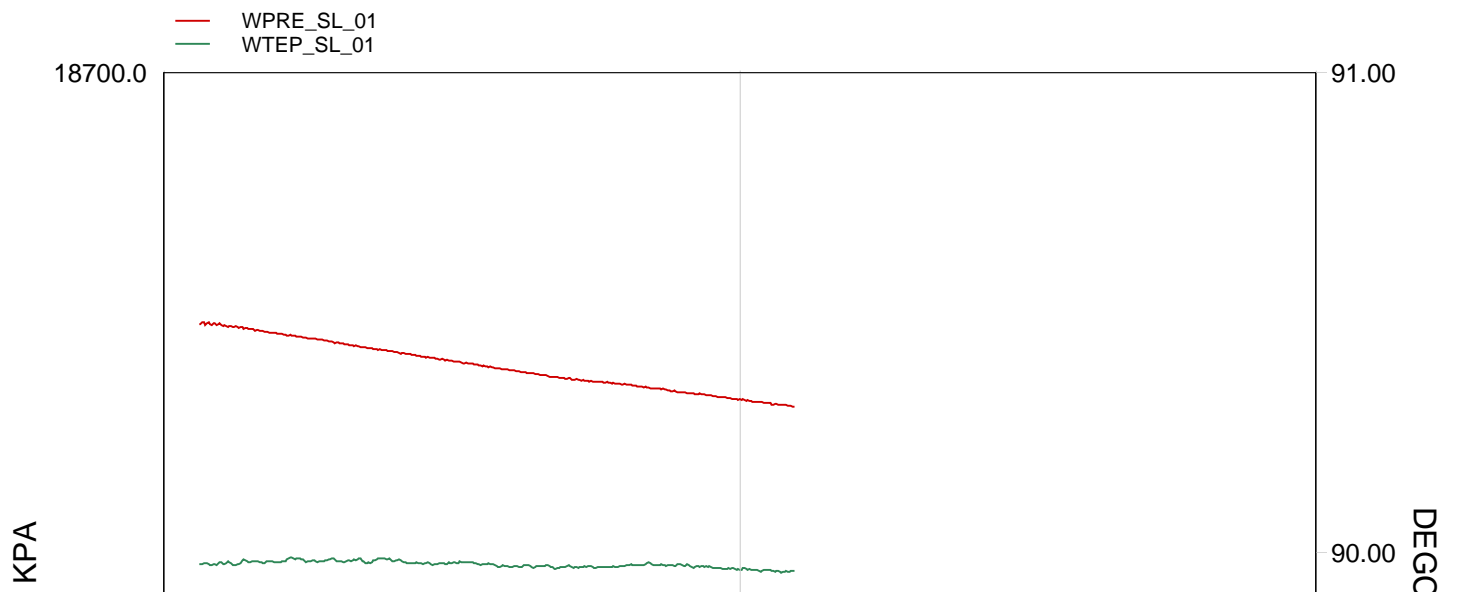


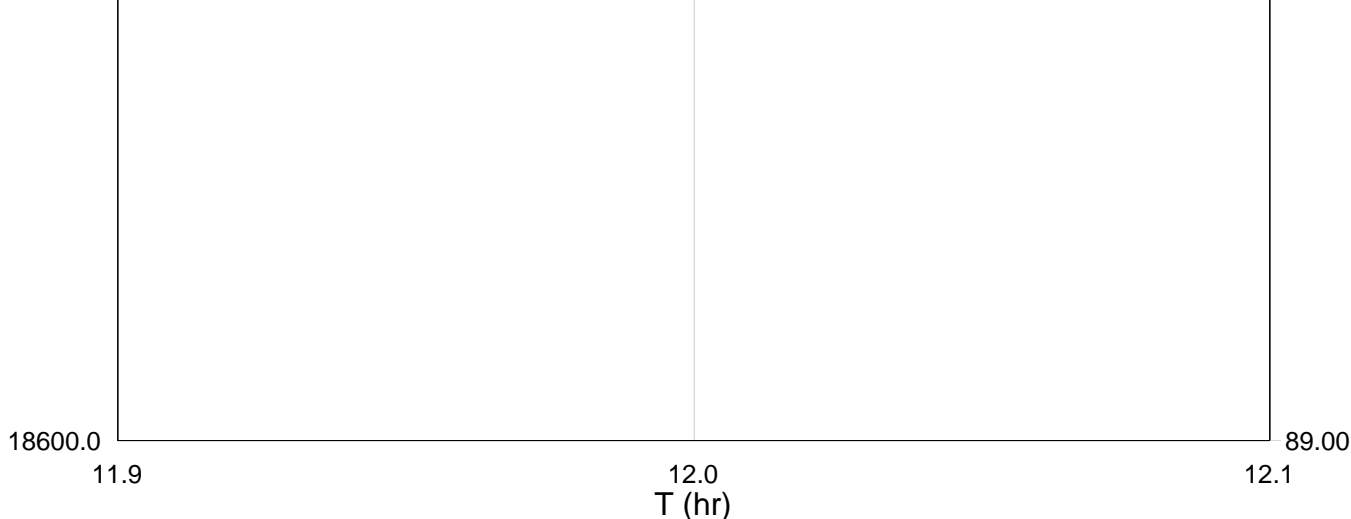
TIME	DEGF	PSIA
15900.0	153.4422	1846.1279
15930.0	153.1819	1840.5606
15960.0	153.1779	1840.4616
15990.0	153.1734	1840.3598
16020.0	153.1773	1840.2967
16050.0	153.1846	1840.2312
16080.0	153.1810	1840.1496
16110.0	153.1598	1840.0534
16140.0	153.1509	1839.9602
16170.0	153.1372	1839.8607
16200.0	153.1216	1839.7333
16230.0	153.1122	1839.6361
16260.0	153.0980	1839.5129
16290.0	153.0880	1839.3894
16320.0	153.0759	1839.2631
16350.0	153.0642	1839.1352
16380.0	153.0634	1839.0648
16410.0	153.0609	1838.9962
16440.0	153.0653	1838.9369
16470.0	153.0616	1838.8777



Static Station @
3000m MDKB 2007.8m TVD

MAXIS Field Log





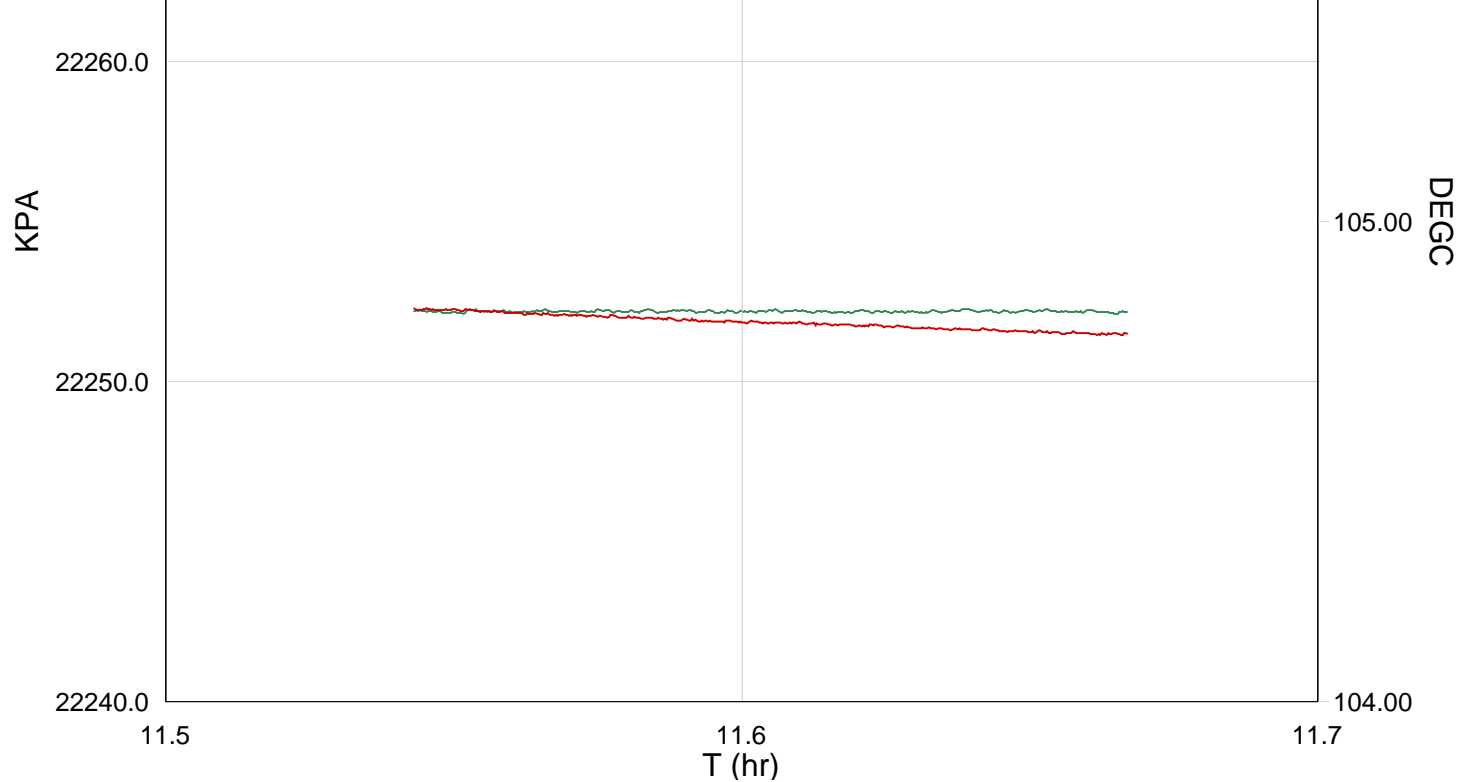
TIME	DEGF	PSIA
13410.0	193.9559	2708.4153
13440.0	193.9600	2708.3039
13470.0	193.9675	2708.1835
13500.0	193.9766	2708.0667
13530.0	193.9598	2707.9546
13560.0	193.9647	2707.8373
13590.0	193.9515	2707.7183
13620.0	193.9476	2707.6139
13650.0	193.9458	2707.5318
13680.0	193.9602	2707.4528
13710.0	193.9460	2707.3530
13740.0	193.9410	2707.2664
13770.0	193.9309	2707.1698

Schlumberger

Static Station @
3515m MDKB 2377.5m TVD

MAXIS Field Log



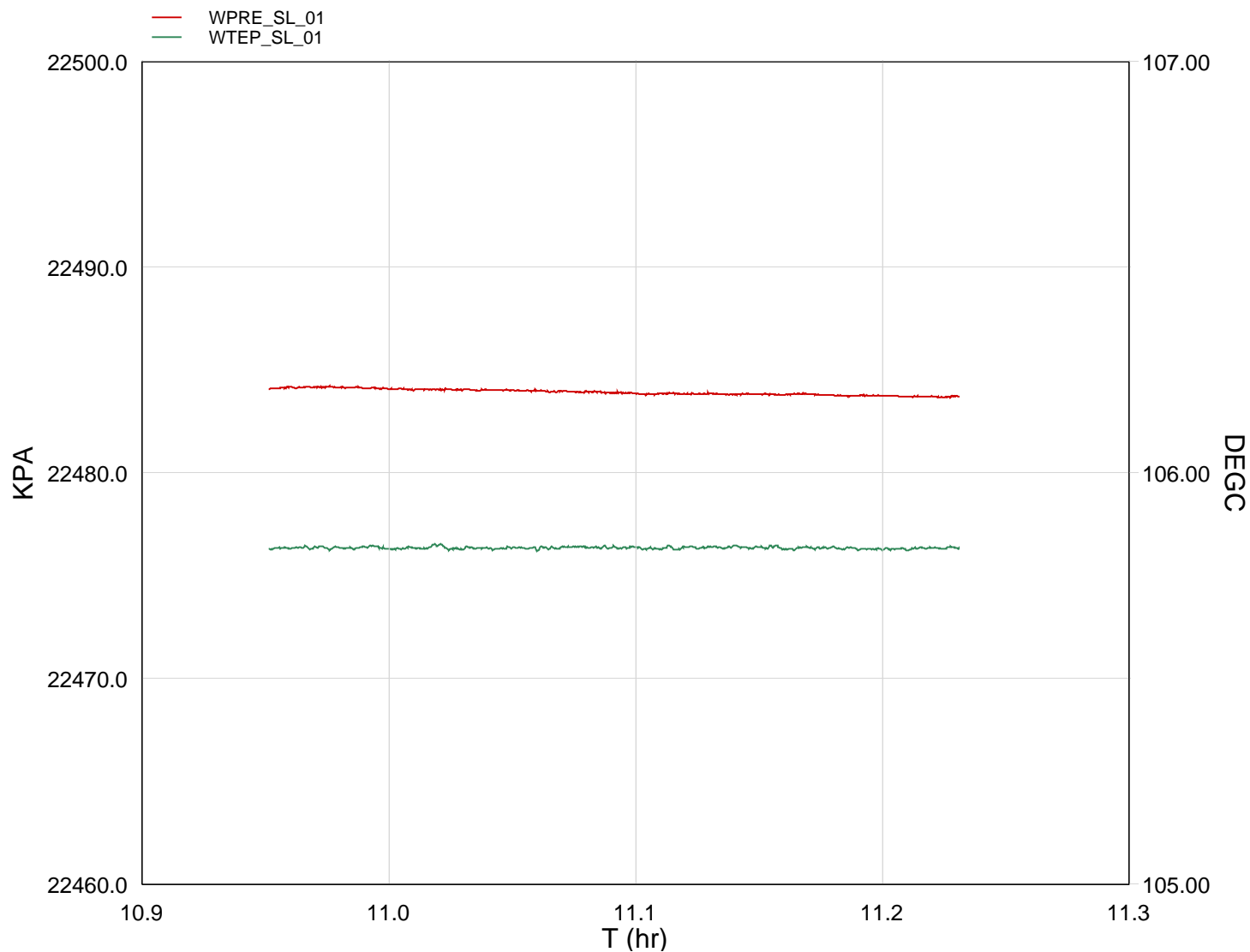


TIME	DEGF	PSIA
12090.0	220.6716	3227.5306
12120.0	220.6597	3227.4165
12150.0	220.6666	3227.4020
12180.0	220.6628	3227.3904
12210.0	220.6691	3227.3857
12240.0	220.6715	3227.3775
12270.0	220.6588	3227.3677
12300.0	220.6631	3227.3560
12330.0	220.6650	3227.3542
12360.0	220.6622	3227.3479
12390.0	220.6622	3227.3387
12420.0	220.6655	3227.3270
12450.0	220.6650	3227.3275
12480.0	220.6630	3227.3136
12510.0	220.6626	3227.3089
12540.0	220.6600	3227.3035

Schlumberger

Static Station @
3545m MDKB 2401.5m TVD

MAXIS Field Log



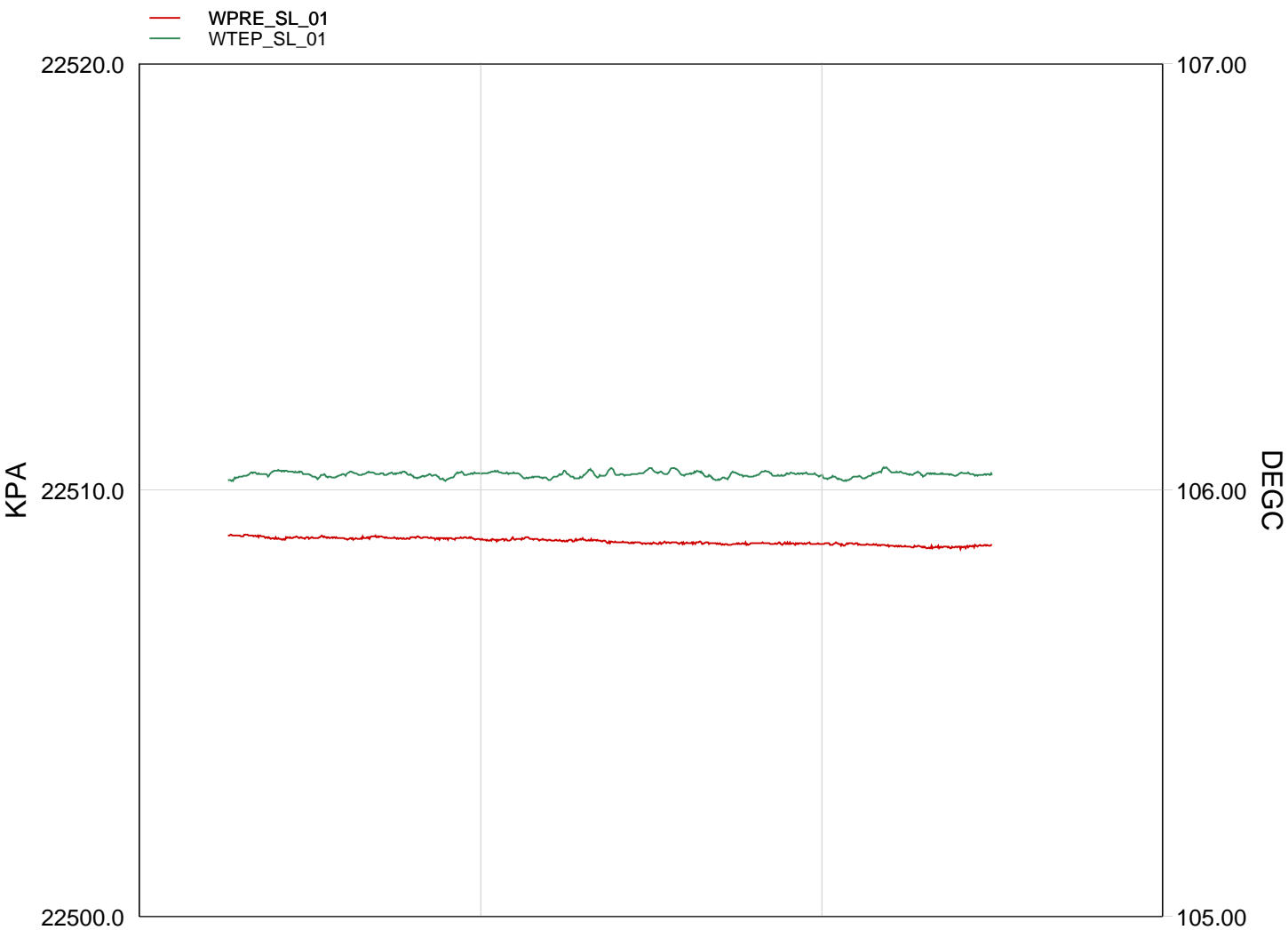
TIME	DEGF	PSIA
9960.0	222.4726	3261.0695
9990.0	222.4730	3261.0550
10020.0	222.4716	3261.0548
10050.0	222.4659	3261.0574
10080.0	222.4716	3261.0497
10110.0	222.4821	3261.0433
10140.0	222.4695	3261.0399
10170.0	222.4759	3261.0351
10200.0	222.4784	3261.0354
10230.0	222.4677	3261.0350
10260.0	222.4735	3261.0321
10290.0	222.4635	3261.0304
10320.0	222.4762	3261.0311
10350.0	222.4775	3261.0305
10380.0	222.4699	3261.0193
10410.0	222.4782	3261.0185
10440.0	222.4780	3261.0202
10470.0	222.4709	3261.0079
10500.0	222.4760	3261.0084
10530.0	222.4690	3261.0073
10560.0	222.4642	3261.0073

10590.0	222.4686	3261.0069
10620.0	222.4750	3261.0050
10650.0	222.4759	3261.0031
10680.0	222.4771	3261.0037
10710.0	222.4718	3260.9991
10740.0	222.4740	3261.0063
10770.0	222.4740	3260.9995
10800.0	222.4667	3260.9911
10830.0	222.4687	3260.9988
10860.0	222.4642	3260.9914
10890.0	222.4683	3260.9881
10920.0	222.4702	3260.9870
10950.0	222.4686	3260.9843



Static Station @
3548.5m MDKB 2404.3m TVD

MAXIS Field Log



T (hr)

TIME	DEGF	PSIA
8790.0	222.8446	3264.6722
8820.0	222.8740	3264.6427
8850.0	222.8818	3264.6311
8880.0	222.8615	3264.6372
8910.0	222.8651	3264.6359
8940.0	222.8783	3264.6376
8970.0	222.8712	3264.6337
9000.0	222.8616	3264.6396
9030.0	222.8599	3264.6311
9060.0	222.8709	3264.6315
9090.0	222.8720	3264.6313
9120.0	222.8565	3264.6286
9150.0	222.8685	3264.6251
9180.0	222.8569	3264.6276
9210.0	222.8630	3264.6223
9240.0	222.8844	3264.6197
9270.0	222.8658	3264.6192
9300.0	222.8617	3264.6195
9330.0	222.8683	3264.6158
9360.0	222.8801	3264.6174
9390.0	222.8694	3264.6130
9420.0	222.8543	3264.6163
9450.0	222.8550	3264.6176
9480.0	222.8773	3264.6114
9510.0	222.8670	3264.6057
9540.0	222.8697	3264.6059
9570.0	222.8735	3264.6024
9600.0	222.8568	3264.6089

Schlumberger

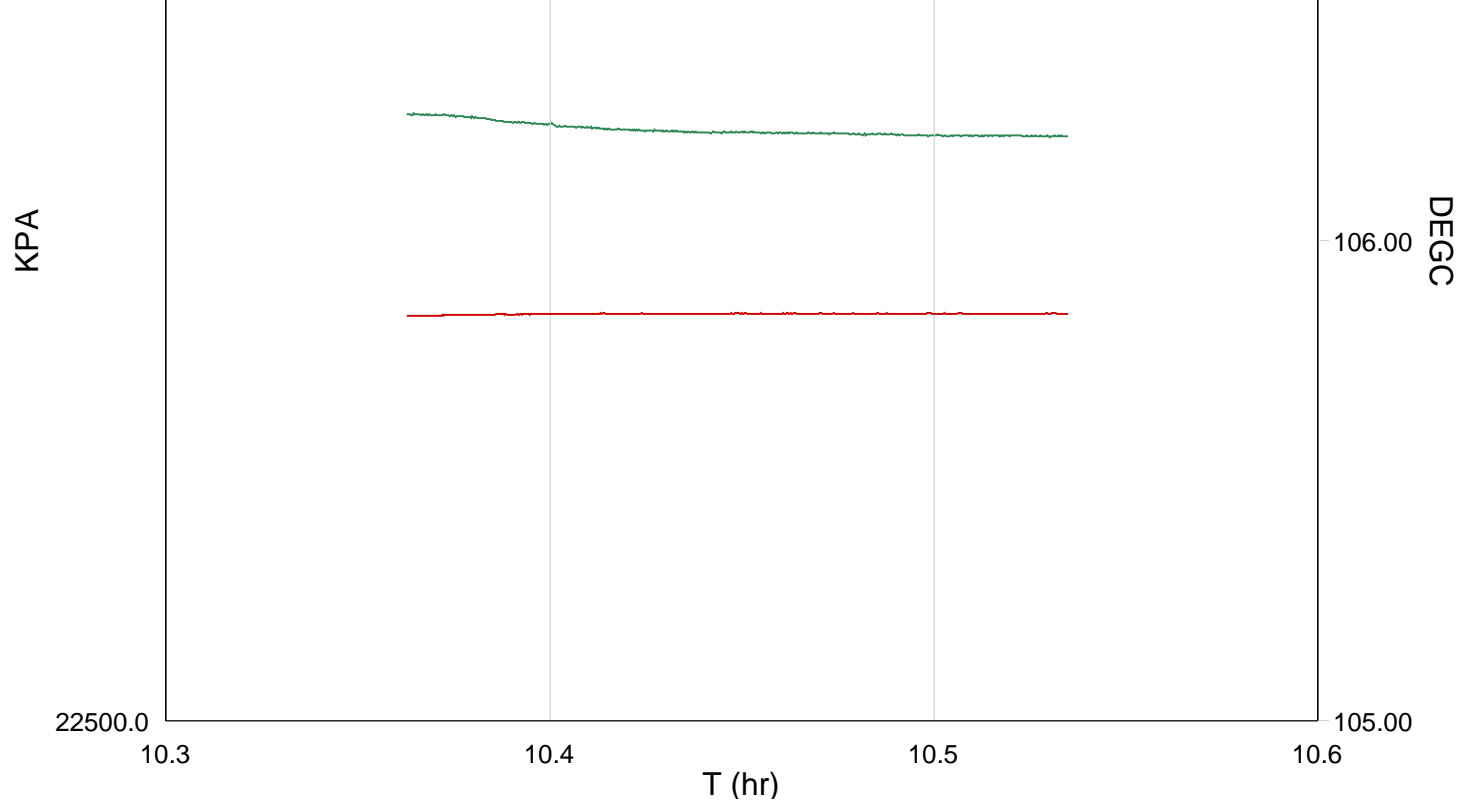
Static Station @
3552.5m MDKB 2407.5m TVD

MAXIS Field Log

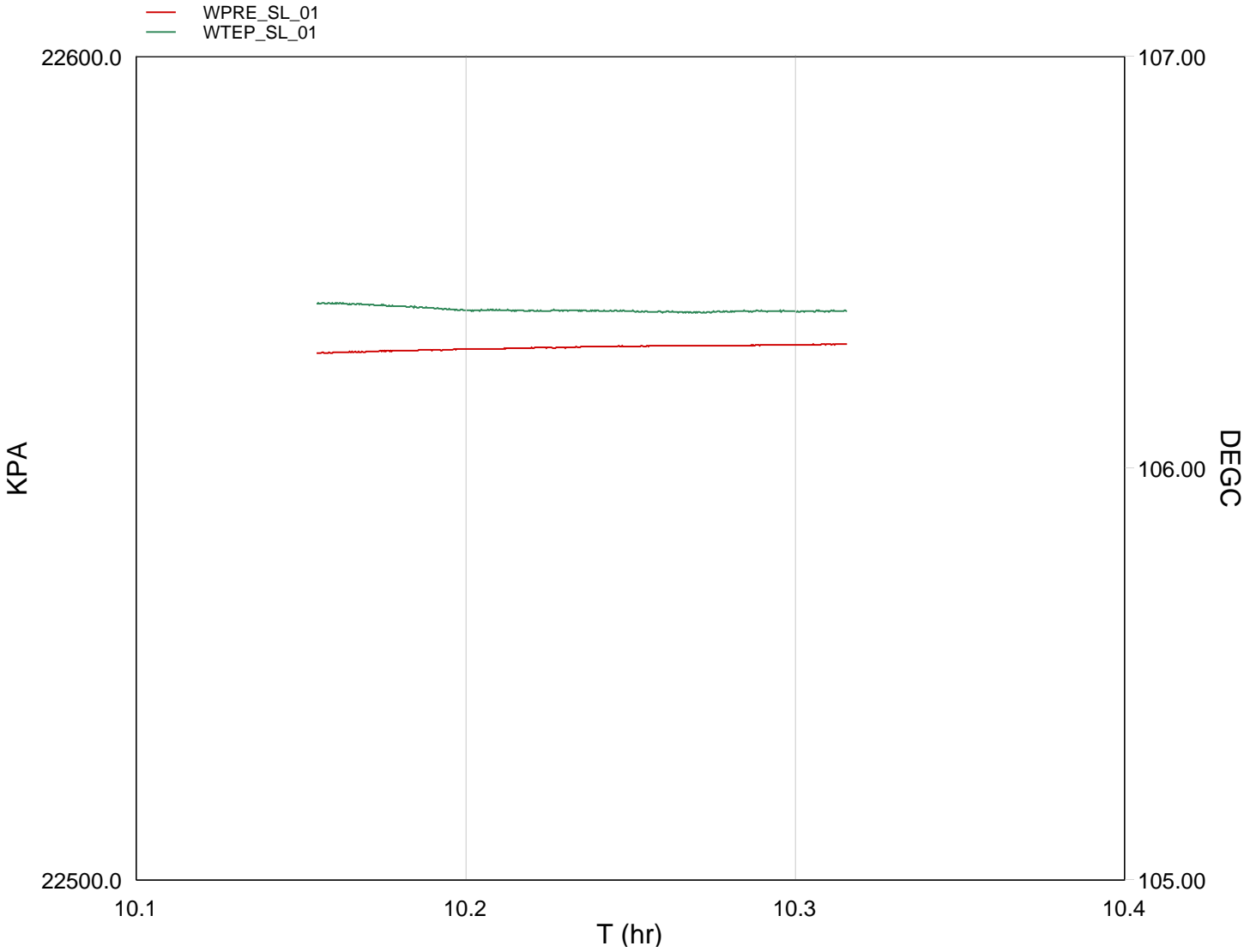
— WPRE_SL_01
— WTEP_SL_01

22600.0

107.00



TIME	DEGF	PSIA
7830.0	223.2941	3269.7707
7860.0	223.2727	3269.4690
7890.0	223.2669	3269.4780
7920.0	223.2582	3269.4865
7950.0	223.2446	3269.4896
7980.0	223.2400	3269.4922
8010.0	223.2259	3269.4970
8040.0	223.2184	3269.5029
8070.0	223.2137	3269.4988
8100.0	223.2101	3269.5012
8130.0	223.2055	3269.5011
8160.0	223.2083	3269.5038
8190.0	223.2054	3269.4961
8220.0	223.2038	3269.5014
8250.0	223.2019	3269.4978
8280.0	223.2011	3269.5017
8310.0	223.1981	3269.4978
8340.0	223.1973	3269.5035
8370.0	223.1952	3269.5011
8400.0	223.1943	3269.5010
8430.0	223.1923	3269.4968
8460.0	223.1944	3269.5028



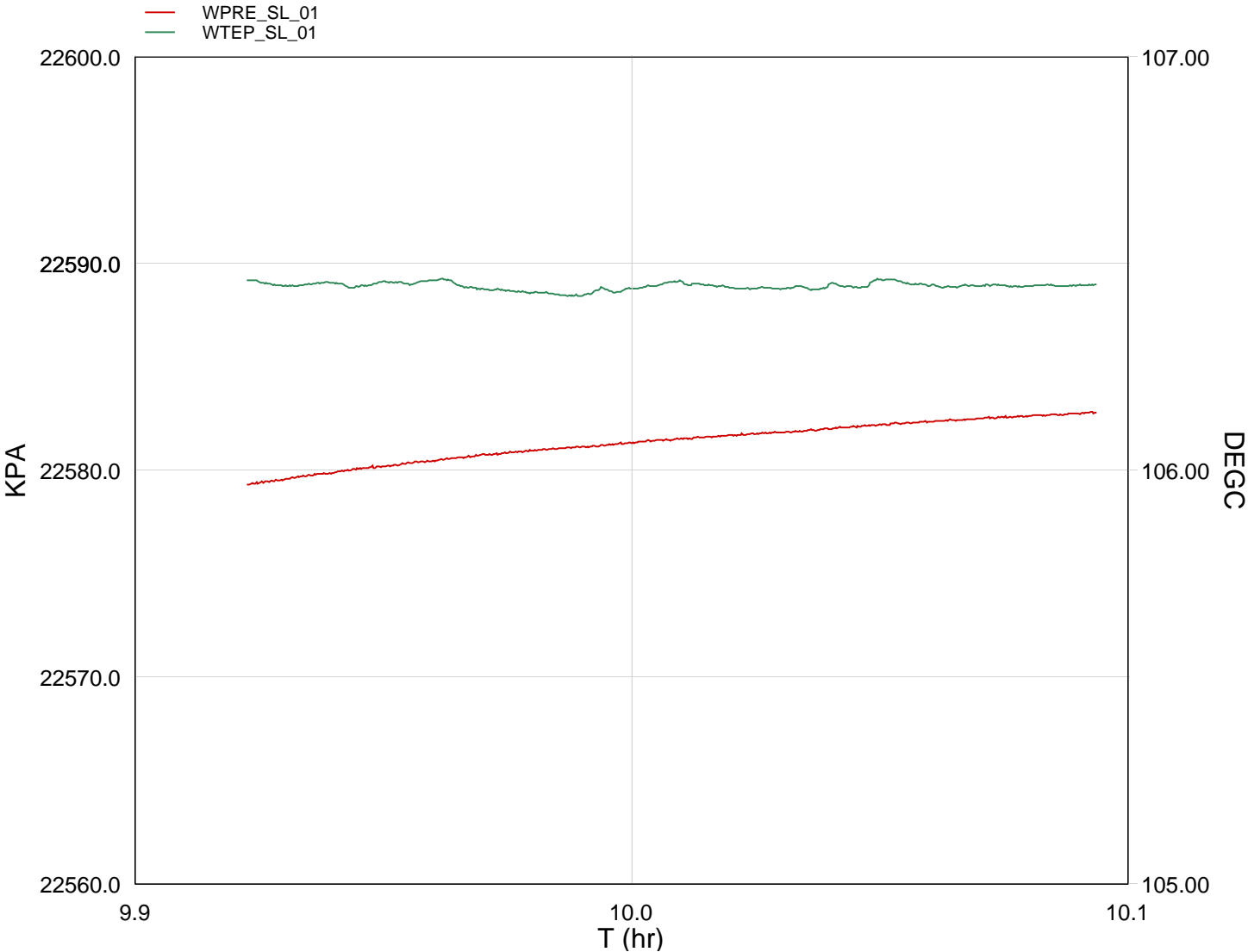
TIME	DEGF	PSIA
7080.0	223.5281	3272.8245
7110.0	223.5212	3272.6363
7140.0	223.5195	3272.6512
7170.0	223.5113	3272.6674
7200.0	223.5036	3272.6751
7230.0	223.4984	3272.6812
7260.0	223.4906	3272.7014
7290.0	223.4923	3272.7075
7320.0	223.4910	3272.7178
7350.0	223.4890	3272.7271
7380.0	223.4892	3272.7379
7410.0	223.4867	3272.7518
7440.0	223.4881	3272.7474
7470.0	223.4867	3272.7571
7500.0	223.4827	3272.7589
7530.0	223.4846	3272.7639
7560.0	223.4827	3272.7617

7560.0	223.4887	3272.7617
7590.0	223.4878	3272.7709
7620.0	223.4856	3272.7798
7650.0	223.4852	3272.7833
7680.0	223.4885	3272.7927



Static Station @
3558m MDKB 2412m TVD

MAXIS Field Log



TIME	DEGF	PSIA
------	------	------

6270.0	223.6181	3274.8697
--------	----------	-----------

6300.0	223.6077	3274.9129
6330.0	223.6086	3274.9464
6360.0	223.6217	3274.9806
6390.0	223.6246	3275.0150
6420.0	223.5962	3275.0505
6450.0	223.5846	3275.0785
6480.0	223.5712	3275.1036
6510.0	223.5710	3275.1223
6540.0	223.5916	3275.1463
6570.0	223.6228	3275.1704
6600.0	223.6016	3275.1906
6630.0	223.5918	3275.2089
6660.0	223.6035	3275.2270
6690.0	223.6032	3275.2567
6720.0	223.6304	3275.2723
6750.0	223.6097	3275.2940
6780.0	223.6083	3275.3077
6810.0	223.6062	3275.3289
6840.0	223.6090	3275.3407
6870.0	223.6083	3275.3563



Gamma Ray Survey
 3589m to 3540m MDKB

MAXIS Field Log

Company: Esso Australia Pty Ltd. Well: F-8

Input DLIS Files

DEFAULT
 PSP_009LUP
 FN:8
 PRODUCER
 15-May-2007 09:23
 3602.4 M
 3497.4 M

Output DLIS Files

DEFAULT
 PSP_011PUP
 FN:10
 PRODUCER
 15-May-2007 09:42
 3596.2 M
 3489.0 M

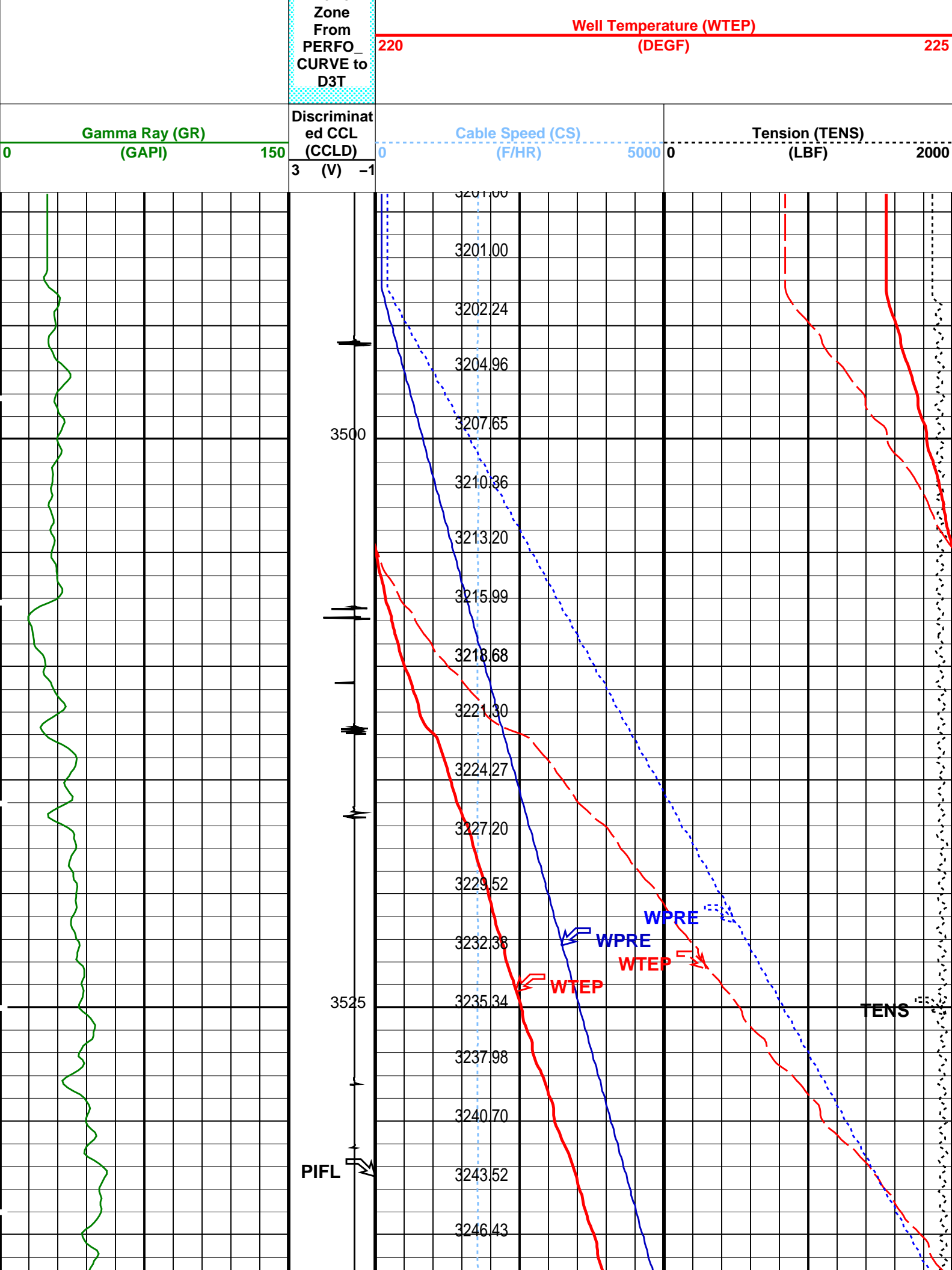
OP System Version: 14C0-302
 MCM

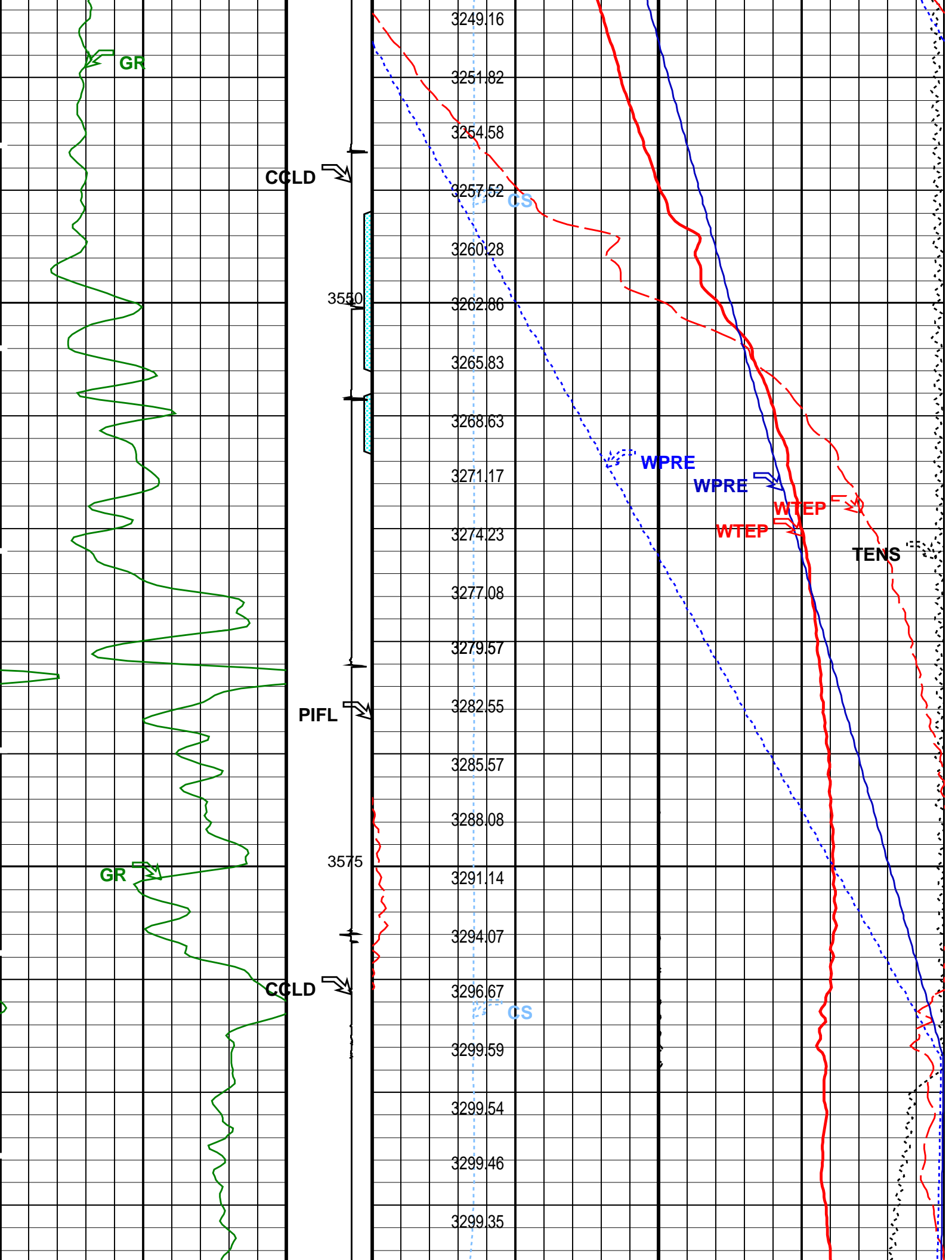
PSPT-A/B
 14C0-302

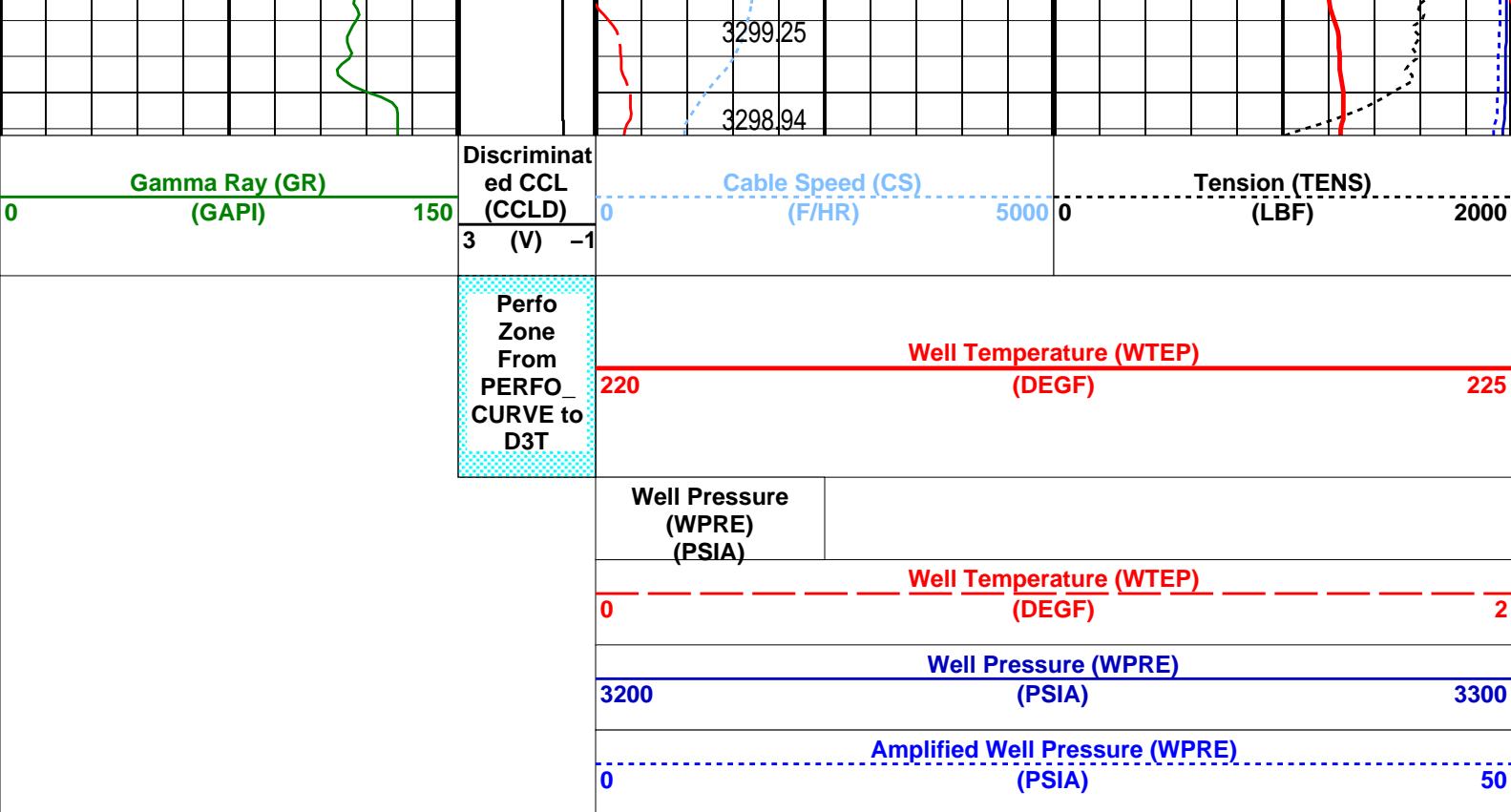
PIP SUMMARY

 Time Mark Every 60 S

	Amplified Well Pressure (WPRE) (PSIA)	
	0	50
	Well Pressure (WPRE) (PSIA)	
	3200	3300
	Well Temperature (WTEP) (DEGF)	
	0	2
	Well Pressure (WPRE) (PSIA)	
Perfo		







PIP SUMMARY

Time Mark Every 60 S

Format: PSP_1 Vertical Scale: 1:200 Graphics File Created: 15-May-2007 09:42

OP System Version: 14C0-302
MCM

PSPT-A/B 14C0-302

Parameters		
DLIS Name	Description	Value
DO	System and Miscellaneous	
PP	Depth Offset for Playback	-6.2 M
	Playback Processing	NORMAL

Input DLIS Files						
DEFAULT	PSP_009LUP	FN:8	PRODUCER	15-May-2007 09:23	3602.4 M	3497.4 M

Output DLIS Files						
DEFAULT	PSP_011PUP	FN:10	PRODUCER	15-May-2007 09:42		

Company: **Esso Australia Pty Ltd.**

Well: **F-8**

Field: **Cobia**

Rig : **Prod4 / Crane**

Country: **Australia**

Schlumberger

Gamma Ray
PSP SBHP
Survey