

Company: Esso Australia Pty Ltd.

Well: A-17a
Field: Tuna
Rig: Crane/Prod 4
Country: Australia

Crane/Prod 4
Tuna
Gippsland
A-17a
Esso Australia Pty Ltd.

2" HSD Powerjet 2006
MWPT – GR
Perforation Record

LOCATION

Gippsland
Basin
Bass Strait

Elev.: K.B. 32.4 m
G.L. -59 m
D.F. 32.4 m

Permanent Datum: M.S.L.
Log Measured From: D.F.
Drilling Measured From: D.F.

Elev.: 0 m
32.4 m above Perm. Datum

State: Victoria

Max. Well Deviation 64 deg

Longitude 148 25'06.5"E

Latitude 038 10'16.5"S

Logging Date				16-Apr-2007							
Run Number				1 & 2							
Depth Driller				3358 m							
Schlumberger Depth				3358 m							
Bottom Log Interval				3358 m							
Top Log Interval				3300 m							
Casing Fluid Type				Production Fluids							
Salinity											
Density											
Fluid Level											
BIT/CASING/TUBING STRING											
Bit Size				6.000 in							
From											
To											
Casing/Tubing Size				4.500 in							
Weight				12.6 lbm/ft							
Grade				VarnAce 80							
From				2766 m							
To				3141 m							
Maximum Recorded Temperatures				212 degf							
Logger On Bottom				16-Apr-2007		12:20					
Unit Number		Location		889		Ausl / Prod 4					
Recorded By				G Wright.							
Witnessed By				R Morris.							

				Run 1							
Oil Density											
Water Salinity											
Gas Gravity											
Bo											
Bw											
1/Bg											
Bubble Point Pressure											
Bubble Point Temperature											
Solution GOR											
Maximum Deviation				64 deg							
CEMENTING DATA											
Primary/Squeeze				Primary							
Casing String No											
Lead Cement Type											
Volume											
Density											
Water Loss											
Additives											
Tail Cement Type											
Volume											
Density											
Water Loss											
Additives											
Expected Cement Top											
Logging Date											
Run Number											
Depth Driller											
Schlumberger Depth											
Bottom Log Interval											
Top Log Interval											
Casing Fluid Type											
Salinity											
Density											
Fluid Level											
BIT/CASING/TUBING STRING											
Bit Size											
From											
To											
Casing/Tubing Size											
Weight											
Grade											
From											
To											
Maximum Recorded Temperatures											
Logger On Bottom											
Unit Number		Location									
Recorded By											
Witnessed By											

DEPTH SUMMARY LISTING

Date Created: 16-APR-2007 12:16:39

Depth System Equipment

Depth Measuring Device		Tension Device		Logging Cable	
Type:	IDW-EB	Type:	PSDS/OSDS	Type:	2-32ZT
Serial Number:	6373	Serial Number:	325357	Serial Number:	24425
Calibration Date:	05-JUL-2006	Calibration Date:	30-Mar-2007	Length:	6349.90 M
Calibrator Serial Number:	9	Calibrator Serial Number:	1174	Conveyance Method: Wireline Rig Type: Offshore_Fixed	
Calibration Cable Type:	2-23ZT	Calibration Gain:	0.90		
Wheel Correction 1:	-2	Calibration Offset:	153.00		
Wheel Correction 2:	-4				

Depth Control Parameters

Log Sequence:	Subsequent Log In the Well
Reference Log Name:	Solar Composite Log.
Reference Log Run Number:	1
Reference Log Date:	no date

Depth Control Remarks

1. IDW used as primary depth control.
2. Z chart used as secondary control.

DISCLAIMER

THE USE OF AND RELIANCE UPON THIS RECORDED-DATA BY THE HEREIN NAMED COMPANY (AND ANY OF ITS AFFILIATES, PARTNERS, REPRESENTATIVES, AGENTS, CONSULTANTS AND EMPLOYEES) IS SUBJECT TO THE TERMS AND CONDITIONS AGREED UPON BETWEEN SCHLUMBERGER AND THE COMPANY, INCLUDING: (a) RESTRICTIONS ON USE OF THE RECORDED-DATA; (b) DISCLAIMERS AND WAIVERS OF WARRANTIES AND REPRESENTATIONS REGARDING COMPANY'S USE OF AND RELIANCE UPON THE RECORDED-DATA; AND (c) CUSTOMER'S FULL AND SOLE RESPONSIBILITY FOR ANY INFERENCE DRAWN OR DECISION MADE IN CONNECTION WITH THE USE OF THIS RECORDED-DATA.

OTHER SERVICES1
OS1: None

REMARKS: RUN NUMBER 1
Log Correlated to Solar composite log provided by client.
Maximum well deviation = 64 degree's at 2962.8m MDKB.
Run one was a 2" HSD Powerjet 2006 with MWPT perforation.
Interval perforated was 3336m to 3338m MDKB.
Run two was a cement dump pass on the Posiset plug set at 3358m MDKB.
Cement was dumped at 3357.5m MDKB.

Crew : J Annear,J Light,A Hall.

RUN 1

SERVICE ORDER #:
PROGRAM VERSION:
FLUID LEVEL:

AUSL07328216
14C0-302

LOGGED INTERVAL

START

STOP

EQUIPMENT DESCRIPTION

RUN 1

SURFACE EQUIPMENT

MWPM-AA 3000

DOWNHOLE EQUIPMENT

AH-SWBS 761

13.94

AH-SWBS 762

13.26

AH-SWBS 763

12.57

MH-SWHS 726

11.89

AH-124 1001

11.53

MWPG-AA 19
MWGH-AA 19

MWPG GR

2.41

11.33

MWPH-AA 94
MWPS-AA 94

10.35

CCL
SMWP Pres
SMWP Temp
Tension

TOOL ZERO

AH-WSPA-A 4002

7.53

AH-ESIC 15042003

7.00

CLIN 2m 2" LCD CLIN

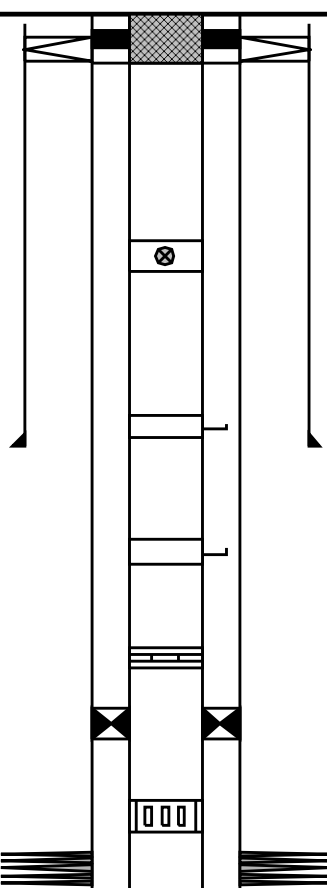
6.35

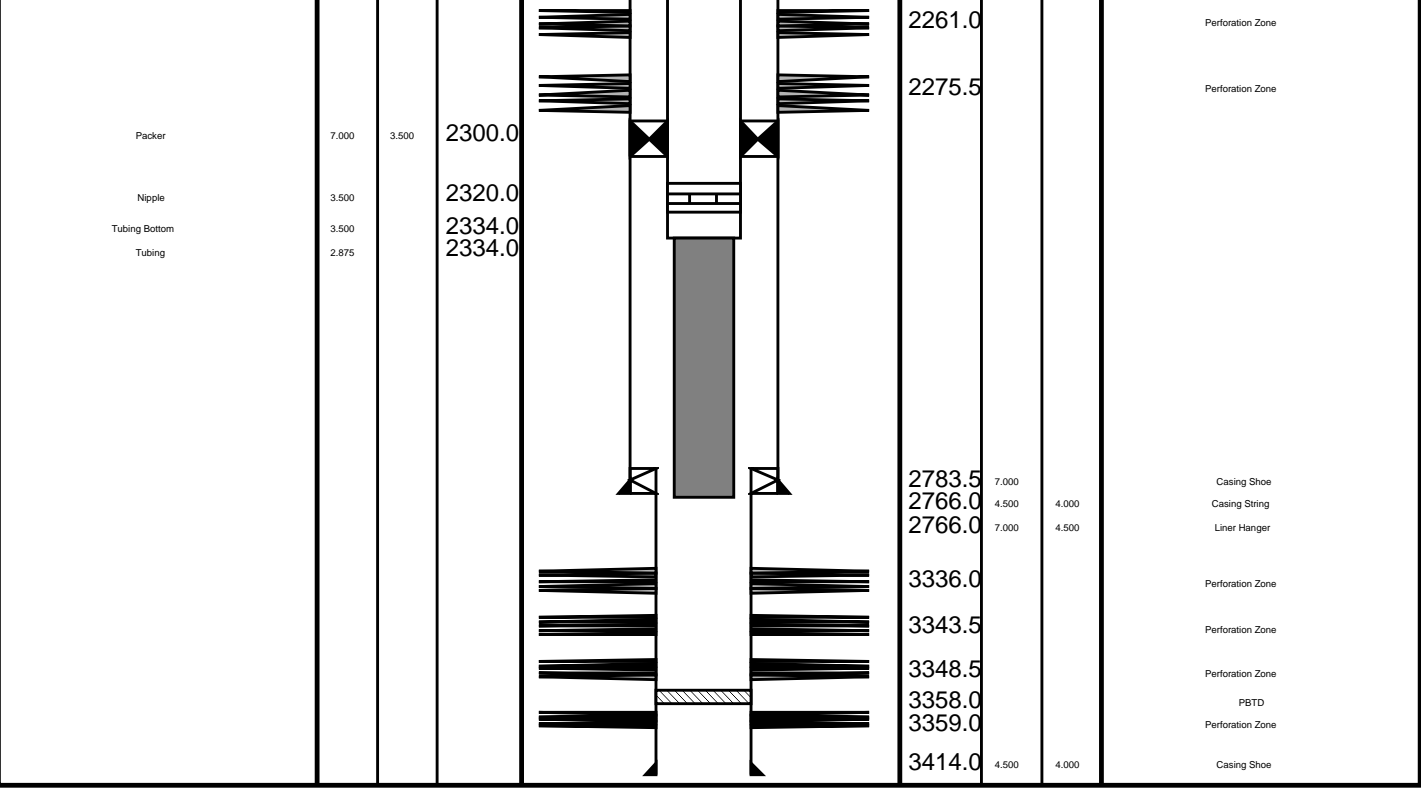
TOOL BOTTOM

MAXIMUM STRING DIAMETER 2.00 IN
MEASUREMENTS RELATIVE TO TOOL ZERO
ALL LENGTHS IN METERS

Client: ExxonMobil
Well: A-17a
Field: Tuna
State: Victoria
Country: Australia

Rig Name: Tuna

Production String	(in)		(m)	Well Schematic	(m)	(in)		Casing String
	OD	ID	MD		MD	OD	ID	
Tubing Hanger	7.000	3.500	7.0		14.0	13.375		Casing String Casing String Liner Hanger
Tubing	3.500		9.7		12.5	13.375	7.000	
Shut-in Valve	3.500		450.9					
Gas Lift Mandrel	3.500		1408.0		715.2	13.375		Casing Shoe
Gas Lift Mandrel	3.500		1919.0					
Nipple	3.500		2051.0					
Packer	7.000	3.500	2077.0					
Sliding Sleeve	3.500		2185.0		2246.5			Perforation Zone



Cement Dump Pass

MAXIS Field Log

Schlumberger Job Event Summary

Time	Elapsed Time	Depth (M)	File
Simulated Log	16-Apr-2007 14:34	000:14	PERFO_085LUP
Log Pass (down)	16-Apr-2007 15:00	000:34	-8.8 - 3356.2 PERFO_086LDP
Log Pass (up)	16-Apr-2007 15:34	000:06	3356.2 - 3295.0 PERFO_087LUP

Input DLIS Files

DEFAULT PERFO_087LUP EN:81 PRODUCER 16 Apr 2007 15:34 3356.2 M 3295.0 M

Output DLIS Files

DEFAULT

PERFO_088PUP

FN:82

PRODUCER

16-Apr-2007 15:34

3356.2 M

3295.0 M

OP System Version: 14C0-302

MCM

SHM_GUN

14C0-302

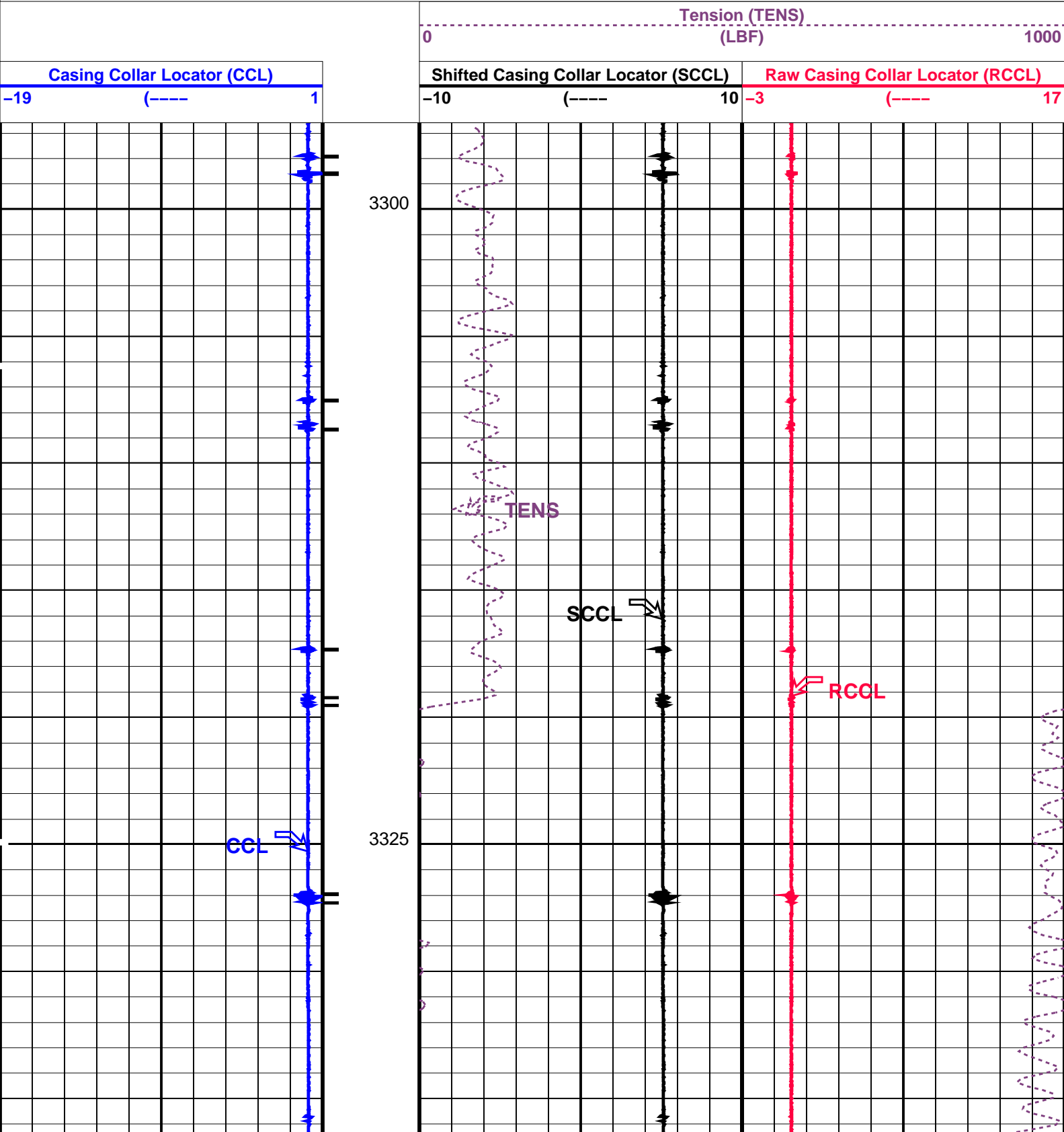
CCL-L

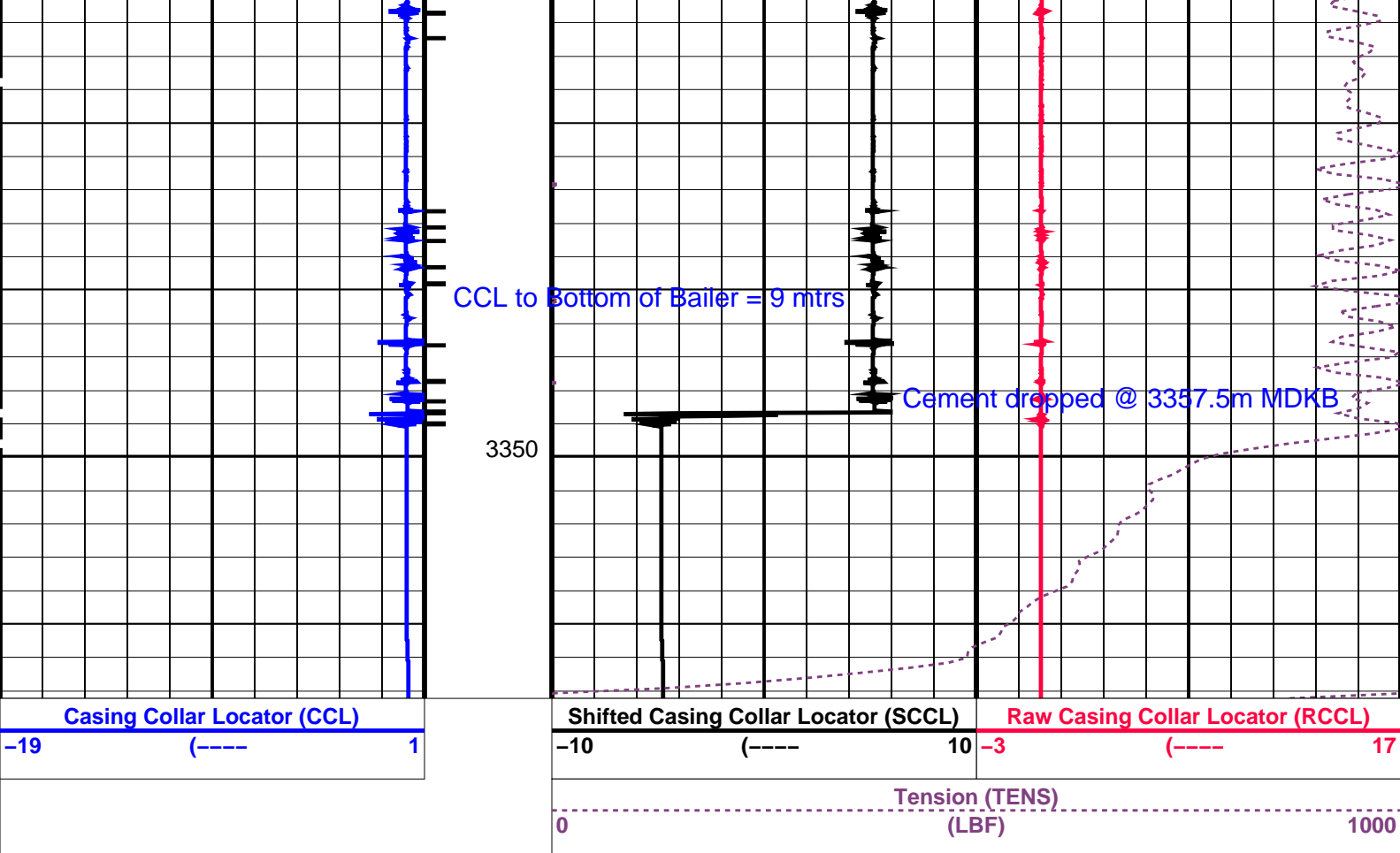
14C0-302

PIP SUMMARY

Casing Collars

Time Mark Every 60 S





PIP SUMMARY

Time Mark Every 60 S

Parameters

DLIS Name	Description	Value
CCLD	CCL-L: Casing Collar Locator	12 IN
CCLT	CCL reset delay	0.3 V
DO	CCL Detection Level	1.0 M
PP	System and Miscellaneous	NORMAL
	Depth Offset for Playback	
	Playback Processing	

Format: PERFO Vertical Scale: 1:200 Graphics File Created: 16-Apr-2007 15:46

OP System Version: 14C0-302

MCM

SHM_GUN 14C0-302 CCL-L 14C0-302

Input DLIS Files

DEFAULT PERFO_087LUP FN:81 PRODUCER 16-Apr-2007 15:34 3356.2 M 3295.0 M

Output DLIS Files

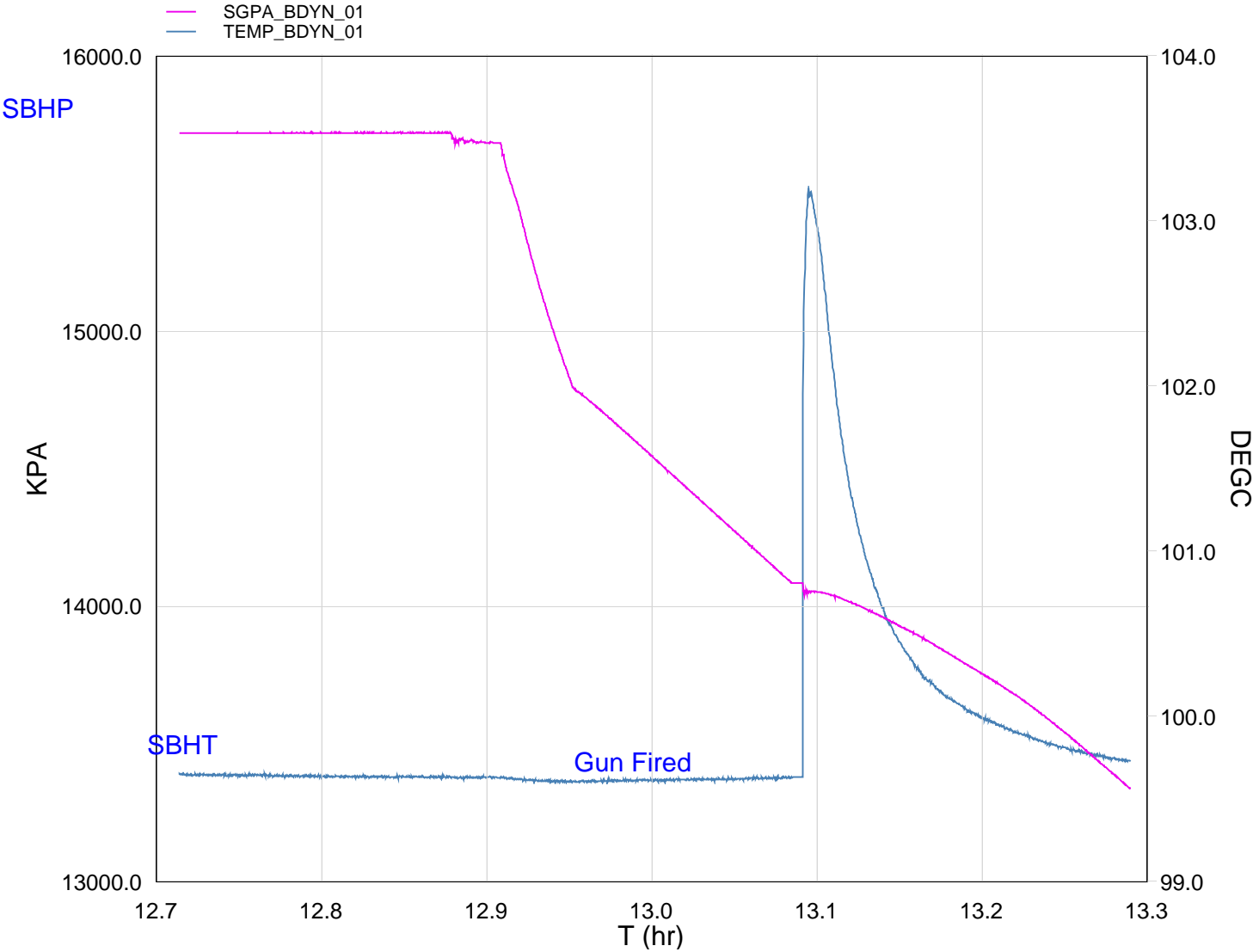
DEFAULT PERFO_088PUP FN:82 PRODUCER 16-Apr-2007 15:46

Schlumberger

GUN # 1 2" HSD
3336m to 3338m MDKB

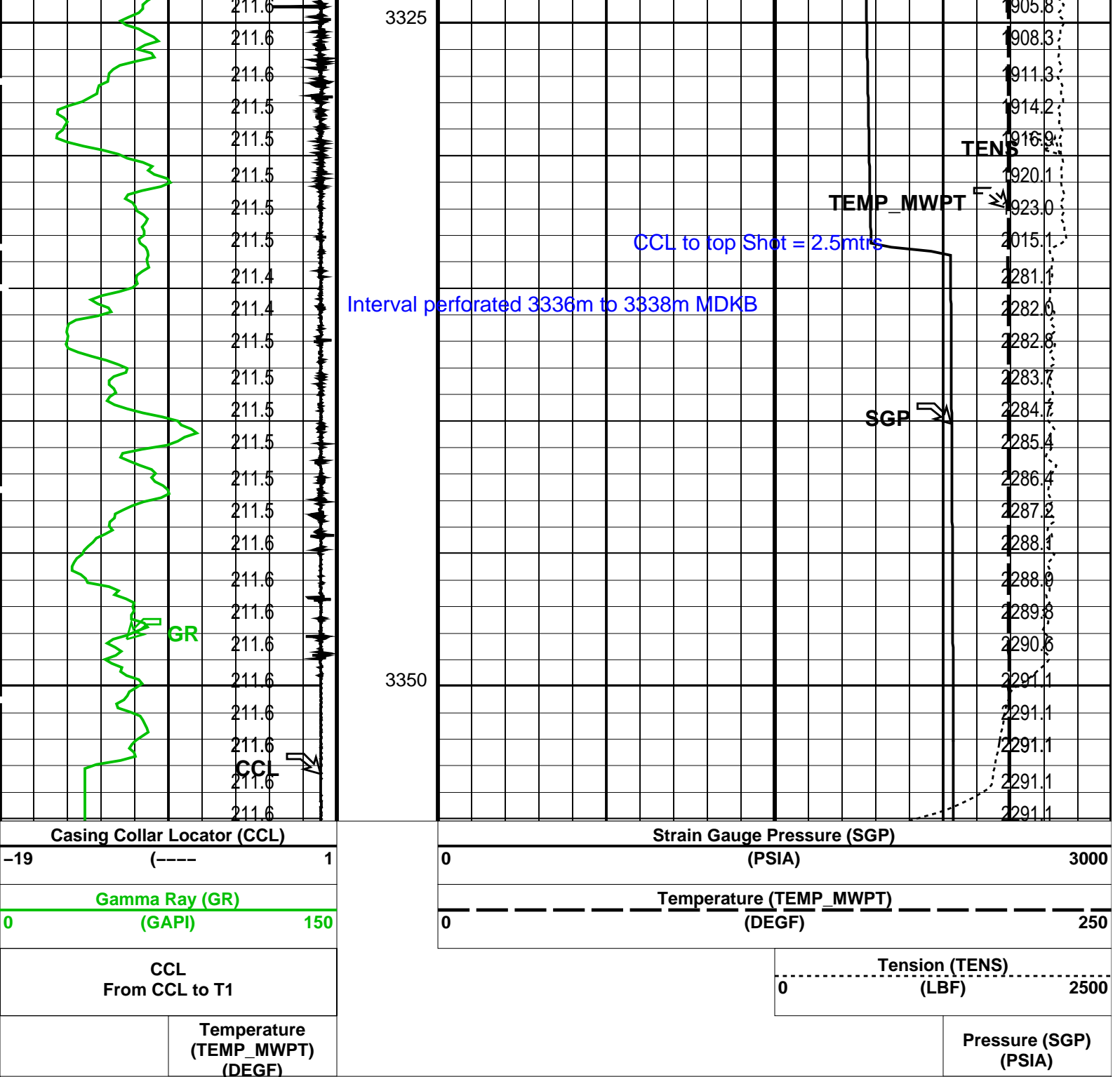
Schlumberger Job Event Summary

	Time	Elapsed Time	Depth (M)	File
Log Pass (down)	16-Apr-2007 11:22	001:03	470.9 – 3358.7	PERFO_079LDP
Log Pass (up)	16-Apr-2007 12:25	000:09	3358.6 – 3292.9	PERFO_080LUP
Log Pass (up)	16-Apr-2007 12:39	000:41	3355.1 – 3321.7	PERFO_082LUP
Station Log	16-Apr-2007 12:42	000:35	3333.5 – 5.3	PERFO_083LTP



TIME	DEGF	PSIA
6900.0	211.53	1939.284
6840.0	211.59	1951.862
6780.0	211.67	1964.233

Company: Esso Australia Pty Ltd.										Well: A-17a														
<h2 style="text-align: center;">Output DLIS Files</h2>																								
DEFAULT					PERFO_082LUP					FN:76					PRODUCER					16-Apr-2007 12:39				
<h3 style="text-align: center;">OP System Version: 14C0-302</h3>																								
										MCM														
MWP_GUN					14C0-302					MWPT-CA					14C0-302									
MWGT-AA					14C0-302																			
<h4 style="text-align: center;">PIP SUMMARY</h4>																								
<div style="display: flex; align-items: center;"> <div style="width: 20px; height: 20px; background-color: black; margin-right: 5px;"></div> <div>Time Mark Every 60 S</div> </div>																								
					Temperature (TEMP_MWPT) (DEGF)															Pressure (SGP) (PSIA)				
CCL From CCL to T1					<div style="display: flex; justify-content: space-between;"> 0 Tension (TENS) (LBF) 2500 </div>																			
Gamma Ray (GR)																								
0 (GAPI) 150																								
Casing Collar Locator (CCL)																								
-19 (----) 1																								
					<div style="display: flex; justify-content: space-between;"> 0 Temperature (TEMP_MWPT) (DEGF) 250 </div>																			
					<div style="display: flex; justify-content: space-between;"> 0 Strain Gauge Pressure (SGP) (PSIA) 3000 </div>																			
					<div style="display: flex; justify-content: space-between;"> 0 Pressure (SGP) (PSIA) 3000 </div>																			



Time Mark Every 60 S			
Parameters			
DLIS Name	Description	Value	
MWPT-CA: MEASUREMENT WHILE PERFORATING TOOL			
DEVI_FL_CORR	Deviation Angle for Flow Line Correction	0	DEG
FLD	Flow Line Density	1	G/C3
MWPT_NULL_SOURCE	MWPT NULL Temperature Source	TEMS	
MWPT_NULL_TEMP	MWPT NULL Temperature	0.0	DEGC
Format: MWP Vertical Scale: 1:200 Graphics File Created: 16-Apr-2007 12:39			
OP System Version: 14C0-302			
MCM			
MWP_GUN	14C0-302	MWPT-CA	14C0-302
MWGT-AA	14C0-302		

Output DLIS Files

DEFAULT PERFO_082LUP FN:76 PRODUCER 16-Apr-2007 12:39



Correlation Pass

MAXIS Field Log

Company: Esso Australia Pty Ltd. Well: A-17a

Input DLIS Files

DEFAULT PERFO_080LUP FN:74 PRODUCER 16-Apr-2007 12:25 3358.6 M 3292.9 M

Output DLIS Files

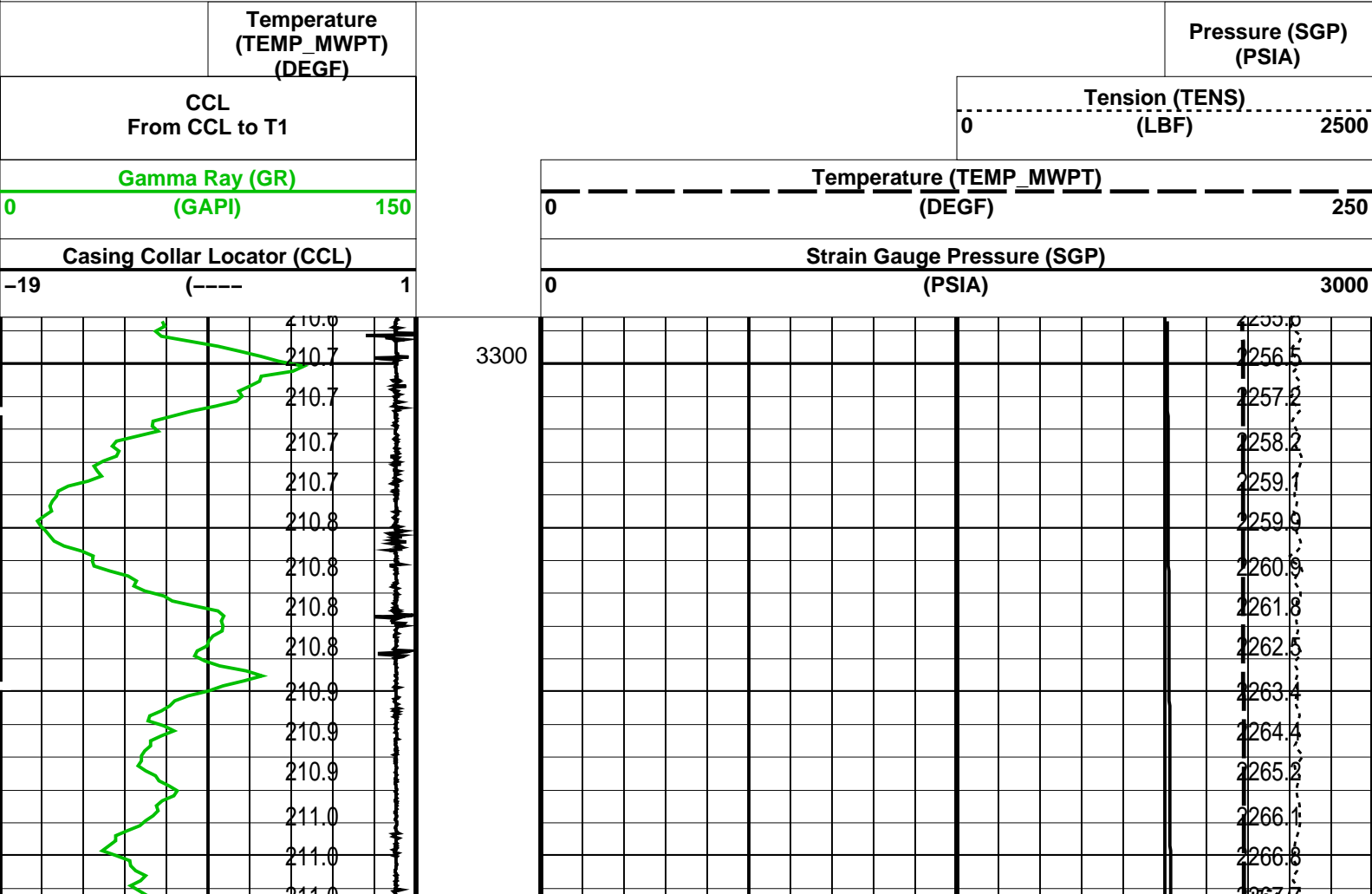
DEFAULT PERFO_081PUP FN:75 PRODUCER 16-Apr-2007 12:34 3363.6 M 3298.5 M

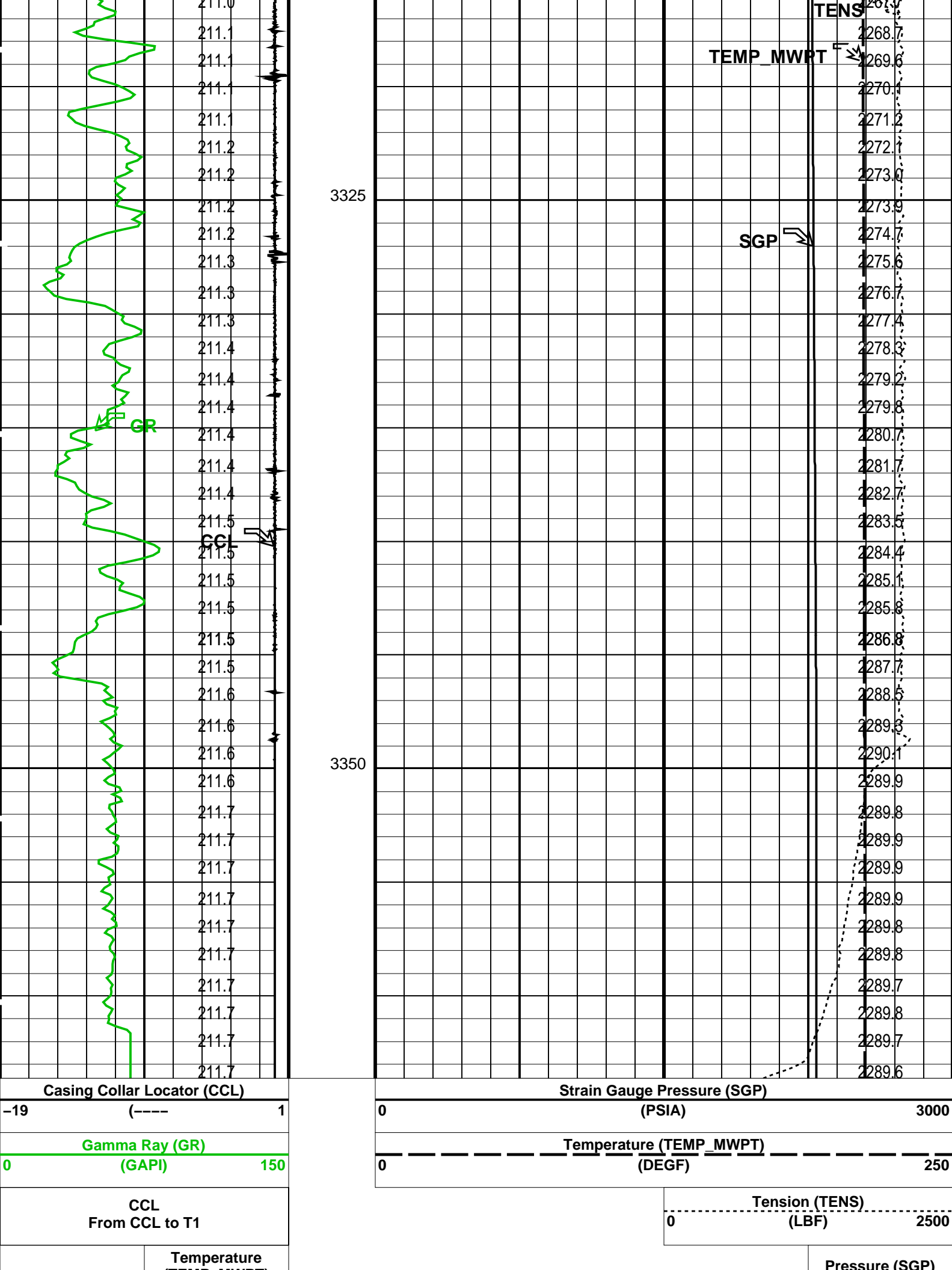
OP System Version: 14C0-302
MCM

MWP_GUN 14C0-302 MWPT-CA 14C0-302
MWGT-AA 14C0-302

PIP SUMMARY

Time Mark Every 60 S





PIP SUMMARY

Time Mark Every 60 S

Parameters

DLIS Name	Description	Value
MWPT-CA: MEASUREMENT WHILE PERFORATING TOOL		
DEVI_FL_CORR	Deviation Angle for Flow Line Correction	0 DEG
FLD	Flow Line Density	1 G/C3
MWPT_NULL_SOURCE	MWPT NULL Temperature Source	TEMS
MWPT_NULL_TEMP	MWPT NULL Temperature	0.0 DEGC
System and Miscellaneous		
DO	Depth Offset for Playback	5.1 M
PP	Playback Processing	NORMAL

Format: MWP	Vertical Scale: 1:200	Graphics File Created: 16-Apr-2007 12:34
-------------	-----------------------	--

OP System Version: 14C0-302
MCM

MWP_GUN	14C0-302	MWPT-CA	14C0-302
MWGT-AA	14C0-302		

Input DLIS Files

DEFAULT	PERFO_080LUP	FN:74	PRODUCER	16-Apr-2007 12:25	3358.6 M	3292.9 M
---------	--------------	-------	----------	-------------------	----------	----------

Output DLIS Files

DEFAULT	PERFO_081PUP	FN:75	PRODUCER	16-Apr-2007 12:34
---------	--------------	-------	----------	-------------------

Company:

Well:

Field:

Rig:

Country:

Esso Australia Pty Ltd.

A-17a

Tuna

Crane/Prod 4

Australia

Schlumberger

2" HSD Powerjet 2006

MWPT – GR

Perforation Record