



Company: Esso Australia Pty Ltd.

Well: HLA A16a  
Field: Halibut  
Rig: 453

Country: Australia

453  
Halibut  
Bass Strait  
HLA A16a  
Esso Australia Pty Ltd.


Tubing Space Out  
Correlation Log  
19-Mar-2007

LOCATION		
Bass Strait		Elev.: K.B. 29.45 m
Gippsland Basin		G.L. -72.5 m
		D.F. 29.45 m
Permanent Datum:	Mean Sea Level	Elev.: 0 m
Log Measured From:	Drill Floor	29.5 m above Perm. Datum
Drilling Measured From:	Drill Floor	
State:	Max. Well Deviation	Longitude
Victoria	17 deg	148° 19' 13.283"E
		Latitude
		38° 24' 15.028"S

Logging Date	19-Mar-2007	
Run Number	1	
Depth Driller	2536 m	
Schlumberger Depth	2526.8 m	
Bottom Log Interval	2448 m	
Top Log Interval	2277 m	
Casing Fluid Type	Brine	
Salinity		
Density	8.55 lbm/gal	
Fluid Level	0 m	
BIT/CASING/TUBING STRING		
Bit Size	8.500 in	
From	545 m	
To	2536 m	
Casing/Tubing Size	2.875 in	
Weight	6.4 lbm/ft	
Grade	13CR-80	
From	11.36 m	
To	2425 m	
Maximum Recorded Temperatures		
Logger On Bottom	19-Mar-2007	1:15
Unit Number	93	AUSL
Recorded By	Chris Rowand	
Witnessed By	Mr B. Bigby / Mr C.Stead	

PVT DATA			Run 1	Run 2	Run 3
Oil Density					
Water Salinity					
Gas Gravity					
Bo					
Bw					
1/Bg					
Bubble Point Pressure					
Bubble Point Temperature					
Solution GOR					
Maximum Deviation		17 deg			
CEMENTING DATA					
Primary/Squeeze		Primary			
Casing String No					
Lead Cement Type					
Volume					
Density					
Water Loss					
Additives					
Tail Cement Type					
Volume					
Density					
Water Loss					
Additives					
Expected Cement Top					
Logging Date					
Run Number					
Depth Driller					
Schlumberger Depth					
Bottom Log Interval					
Top Log Interval					
Casing Fluid Type					
Salinity					
Density					
Fluid Level					
BIT/CASING/TUBING STRING					
Bit Size					
From					
To					
Casing/Tubing Size					
Weight					
Grade					
From					
To					
Maximum Recorded Temperatures					
Logger On Bottom	Time				
Unit Number	Location				
Recorded By					
Witnessed By					



Operators = Kevin Kerr & Nathan Simmons (Days)					
Gary Martin & Graige Harris (Nights)					
RUN 1			RUN 2		
SERVICE ORDER #:			SERVICE ORDER #:		
PROGRAM VERSION:			PROGRAM VERSION:		
FLUID LEVEL:			FLUID LEVEL:		
14C0-302					
0 m					
LOGGED INTERVAL	START	STOP	LOGGED INTERVAL	START	STOP
EQUIPMENT DESCRIPTION					
RUN 1			RUN 2		
SURFACE EQUIPMENT					
WITM (SHM)					
DOWNHOLE EQUIPMENT					
MH-22		6.17			
MH-22					
AH-38		5.69			
EQF-46		5.61			
EQF-46					
EQF-43		3.78			
EQF-43					

PGGT-CC  
PGGC 263  
PGGH-A 263

1.96

Gamma Ray

0.48

Casing Co  
Tension

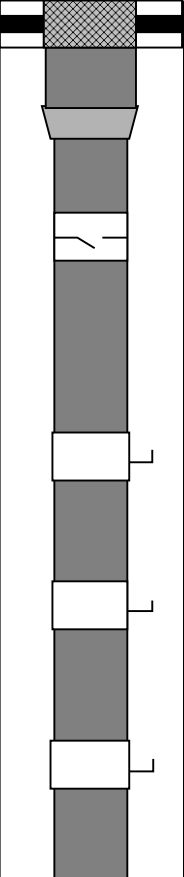
TOOL ZERO

SHM\_GUN

TOOL BOTTOM

0.00

MAXIMUM STRING DIAMETER 2.13 IN  
MEASUREMENTS RELATIVE TO TOOL ZERO  
ALL LENGTHS IN METERS

Production String	(in)		(ft)	Well Schematic	(ft)	(in)		Casing String
	OD	ID	MD		MD	OD	ID	
Tubing Hanger	7.000	3.500	0.0			7.000	6.276	Casing String, 26.0 lbm/ft Casing String
Tubing, 9.2 lbm/ft	3.500	2.992	12.0			10.750		
Crossover Joint Tubing, 6.4 lbm/ft	3.500 2.875	2.875 2.441	16.0					
SSSV	2.875		140.0					Casing Shoe
Side Pocket Mandrel	2.875	2.347	646.0		544.6	10.750		
Side Pocket Mandrel	2.875	2.347	861.0					
Side Pocket Mandrel	2.875	2.347	1103.0					

Side Pocket Mandrel	2.875	2.347	1388.0					
Nipple	2.875	2.313	1412.0					
Packer	7.000	2.875	2373.0		2398.5			Perforation Zone
					2399.5			Perforation Zone Bottom
Sliding Sleeve	2.875	2.313	2382.0					
					2409.0			Perforation Zone
					2410.0			Perforation Zone Bottom
Packer	7.000	2.875	2414.0					
Nipple	2.875	2.250	2428.0					
Tubing Bottom	2.875	2.441	2429.0					
					2526.8			PBTD
					2525.3	7.000	6.276	Casing Shoe



# Tubing Space Out Correlation

MAXIS Field Log

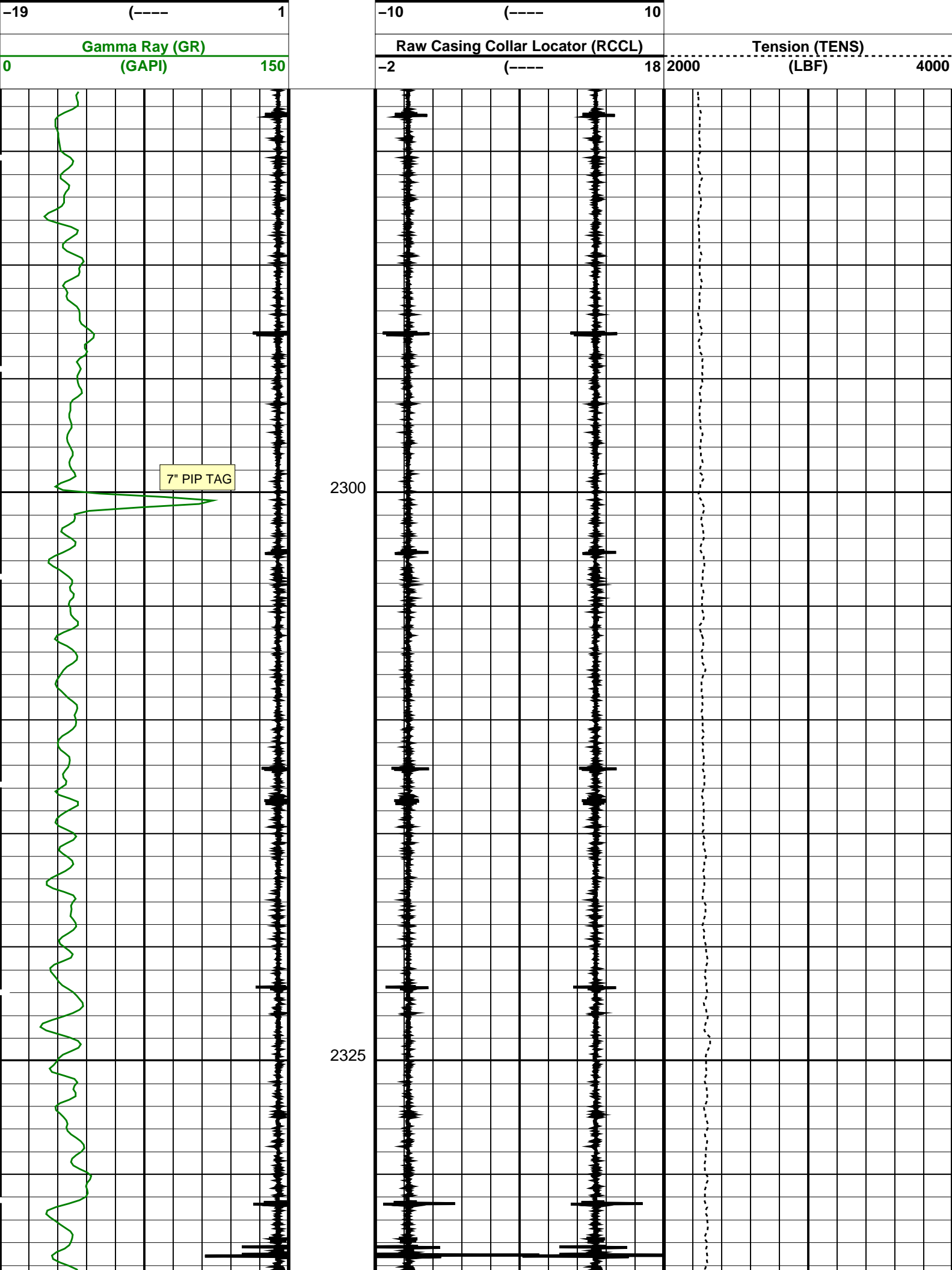
Company: Esso Australia Pty Ltd. Well: HLA A16a

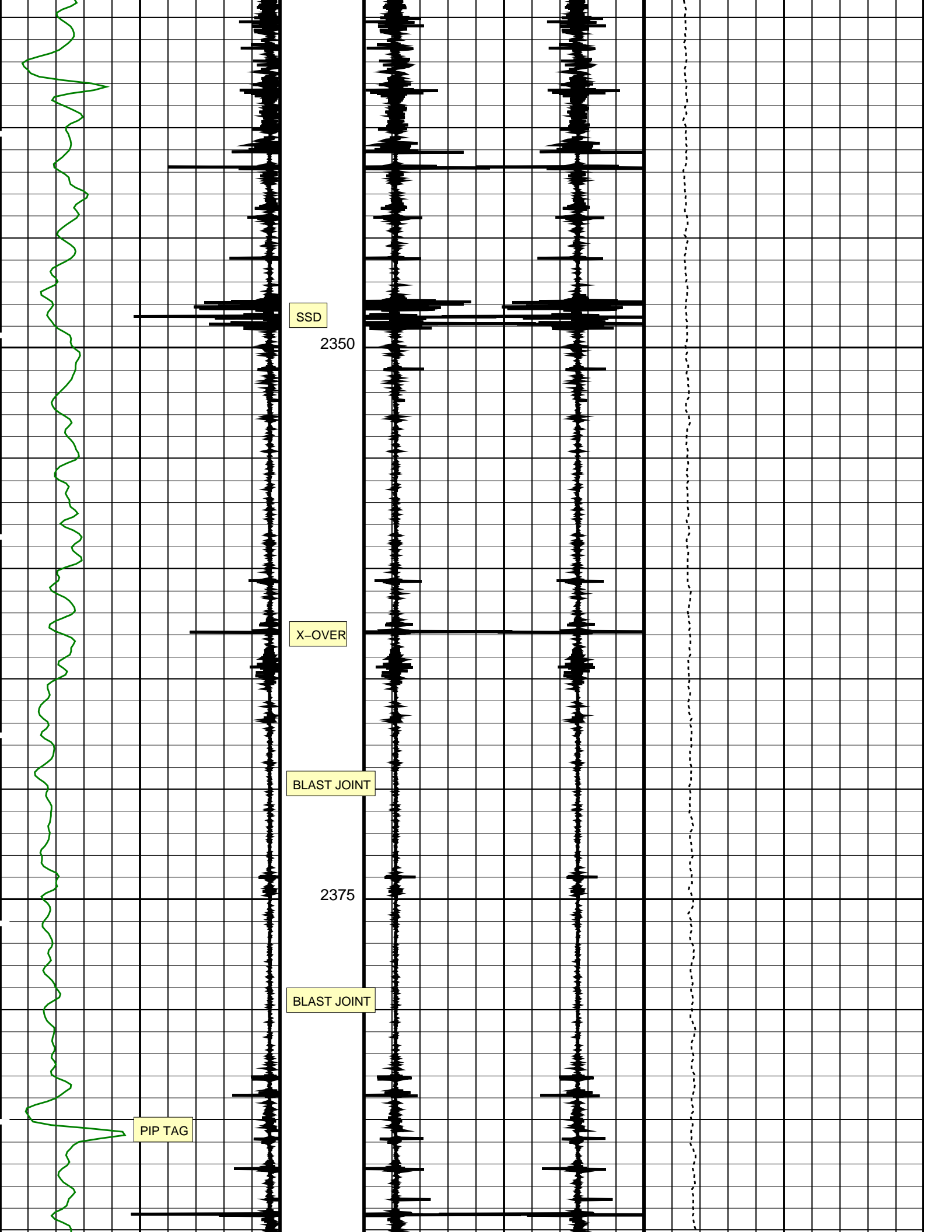
Input DLIS Files					
DEFAULT	PERFO_024LUP	FN:26	PRODUCER	19-Mar-2007 01:14	2450.4 M 2282.8 M
Output DLIS Files					
DEFAULT	PERFO_024PUP	FN:28	PRODUCER	19-Mar-2007 01:37	2449.4 M 2282.2 M

OP System Version: 14C0-302		
MCM		
SHM_GUN	14C0-302	PGGT-CC 14C0-302

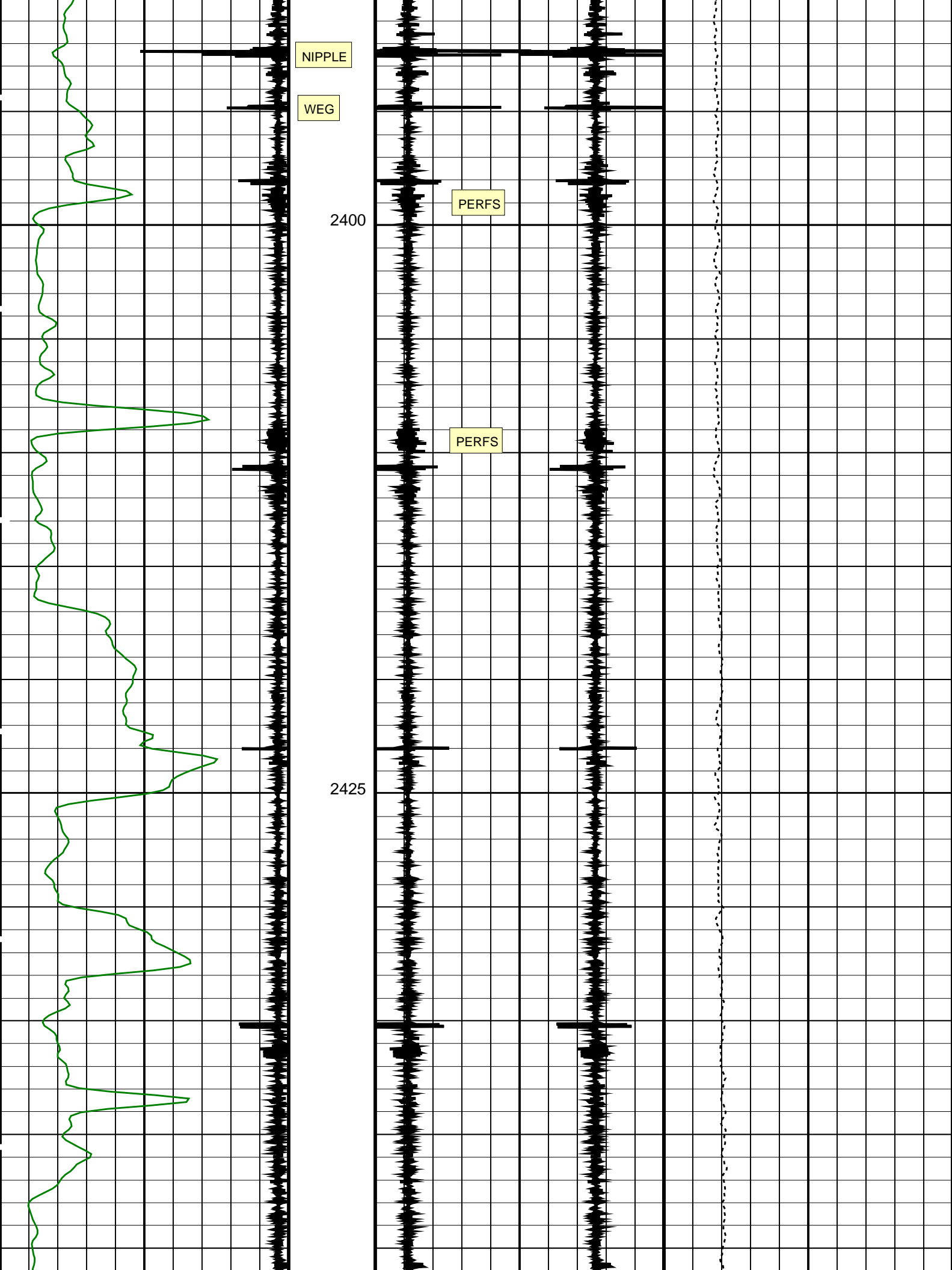
## PIP SUMMARY

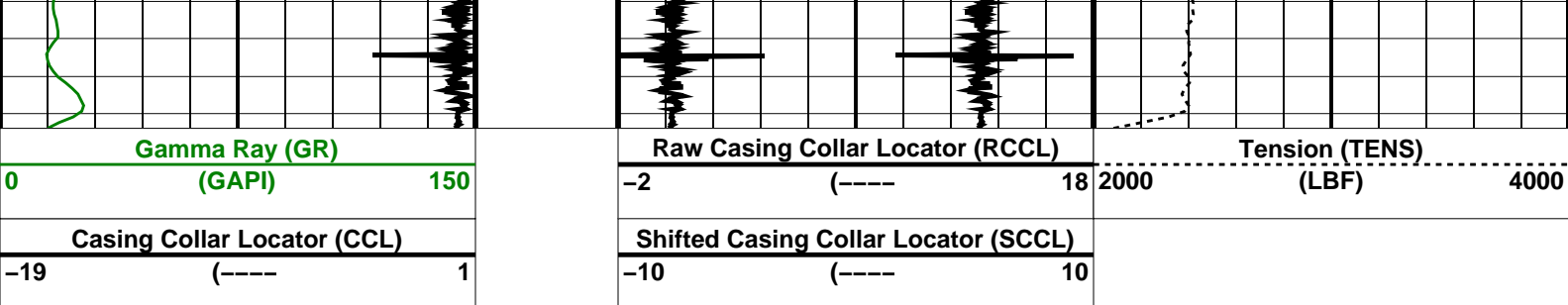
<input checked="" type="checkbox"/> Time Mark Every 60 S	
Casing Collar Locator (CCL)	Shifted Casing Collar Locator (SCCL)











### PIP SUMMARY

Time Mark Every 60 S

### Parameters

DLIS Name	Description	Value
DO	System and Miscellaneous	
PP	Depth Offset for Playback Playback Processing	-1.1 M NORMAL
Format: CORRELATION Vertical Scale: 1:200		Graphics File Created: 19-Mar-2007 01:37

### OP System Version: 14C0-302

MCM

SHM\_GUN 14C0-302 PGGT-CC 14C0-302

### Input DLIS Files

DEFAULT PERFO\_024LUP FN:26 PRODUCER 19-Mar-2007 01:14 2450.4 M 2282.8 M

### Output DLIS Files

DEFAULT PERFO\_024PUP FN:28 PRODUCER 19-Mar-2007 01:37

Company: **Esso Australia Pty Ltd.**

**Schlumberger**

Well: **HLA A16a**

Field: **Halibut**

Rig: **453**

Country: **Australia**

Tubing Space Out  
Correlation Log  
19-Mar-2007