



Company: Esso Australia Pty/Ltd.

Well: A-5  
Field: Flounder  
Rig: Prod 4 / Crane  
Country: Australia

2 1/8" Phased Powerjet  
Mwpt  
Perforation Record

Prod 4 / Crane  
Flounder  
Gippsland  
A-5  
Esso Australia Pty/Ltd.

LOCATION		
Gippsland Basin Bass Strait		Elev.: K.B. 34 m G.L. -94 m D.F. 34 m
Permanent Datum:	M.S.L.	Elev.: 0 m
Log Measured From:	D.F.	34.0 m above Perm. Datum
Drilling Measured From:	D.F.	
State: Victoria	Max. Well Deviation 33 deg	Longitude 148°06'15.1"E  Latitude 038°18'45.2"S

Logging Date	10-Feb-2007		
Run Number	Two		
Depth Driller	2843 m		
Schlumberger Depth	2840 m		
Bottom Log Interval	2840 m		
Top Log Interval	2780 m		
Casing Fluid Type	Production Fluids		
Salinity			
Density			
Fluid Level	590 m		
BIT/CASING/TUBING STRING			
Bit Size	9.875 in		
From			
To			
Casing/Tubing Size	7.625 in		
Weight	29.7 lbn/ft		
Grade	L-80		
From	13 m		
To	2905 m		
Maximum Recorded Temperatures	231 degF		
Logger On Bottom	10-Feb-2007	Time	3:00
Unit Number	889	Location	Ausl / Prod4
Recorded By	S Gilbert / G Wright.		
Witnessed By	B White / B Robinson.		

		Run 1	
Oil Density			
Water Salinity			
Gas Gravity			
Bo			
Bw			
1/Bg			
Bubble Point Pressure			
Bubble Point Temperature			
Solution GOR			
Maximum Deviation		33 deg	
CEMENTING DATA			
Primary/Squeeze		Primary	
Casing String No			
Lead Cement Type			
Volume			
Density			
Water Loss			
Additives			
Tail Cement Type			
Volume			
Density			
Water Loss			
Additives			
Expected Cement Top			
Logging Date			
Run Number			
Depth Driller			
Schlumberger Depth			
Bottom Log Interval			
Top Log Interval			
Casing Fluid Type			
Salinity			
Density			
Fluid Level			
BIT/CASING/TUBING STRING			
Bit Size			
From			
To			
Casing/Tubing Size			
Weight			
Grade			
From			
To			
Maximum Recorded Temperatures			
Logger On Bottom		Time	
Unit Number		Location	
Recorded By			
Witnessed By			

## DEPTH SUMMARY LISTING

Date Created: 10-FEB-2007 8:03:46

### Depth System Equipment

Depth Measuring Device		Tension Device		Logging Cable	
Type:	IDW-B	Type:	CMTD-B/A	Type:	2-32ZT
Serial Number:	6373	Serial Number:	325357	Serial Number:	24426
Calibration Date:	4-JAN-2007	Calibration Date:	6-FEB-2007	Length:	6600.14 M
Calibrator Serial Number:	9	Calibrator Serial Number:	1174	Conveyance Method: Wireline Rig Type: Offshore_Fixed	
Calibration Cable Type:	2-32ZT	Calibration Gain:	0.90		
Wheel Correction 1:	-2	Calibration Offset:	197.00		
Wheel Correction 2:	-4				

### Depth Control Parameters

Log Sequence:	Subsequent Log In the Well
Reference Log Name:	Solar Compersite Log
Reference Log Run Number:	
Reference Log Date:	0

### Depth Control Remarks

1. IDW used as primary depth control
2. Z Chart used as secondary depth control
3.
4.
5.
6.

#### DISCLAIMER

THE USE OF AND RELIANCE UPON THIS RECORDED-DATA BY THE HEREIN NAMED COMPANY (AND ANY OF ITS AFFILIATES, PARTNERS, REPRESENTATIVES, AGENTS, CONSULTANTS AND EMPLOYEES) IS SUBJECT TO THE TERMS AND CONDITIONS AGREED UPON BETWEEN SCHLUMBERGER AND THE COMPANY, INCLUDING: (a) RESTRICTIONS ON USE OF THE RECORDED-DATA; (b) DISCLAIMERS AND WAIVERS OF WARRANTIES AND REPRESENTATIONS REGARDING COMPANY'S USE OF AND RELIANCE UPON THE RECORDED-DATA; AND (c) CUSTOMER'S FULL AND SOLE RESPONSIBILITY FOR ANY INFERENCE DRAWN OR DECISION MADE IN CONNECTION WITH THE USE OF THIS RECORDED-DATA.

OTHER SERVICES1
OS1: RST-C
OS2: Sigma
OS3:
OS4:
OS5:
REMARKS: RUN NUMBER 1
Log correlated to Solar composite supplied with program.
Maximum well deviation = 33 degrees at 745m MDKB.
2 1/8"45 degree Phased Powerjet @ 6spf used for this perforation.
Interval perforated was 2815m to 2817m MDKB.
SBHP = 3203 psia.
SBHT = 232 degf.
The well was flowed for a 15 minute clean up period following

the gun being fired.


FBHP = 3203 psia.

FBHT = 234 degf.

Crew : J Annear,A Hall,P Lawrence,G Martin.

RUN 1		
SERVICE ORDER #:	AUSL07336255	
PROGRAM VERSION:	14C0-302	
FLUID LEVEL:	590 m	
LOGGED INTERVAL	START	STOP

EQUIPMENT DESCRIPTION

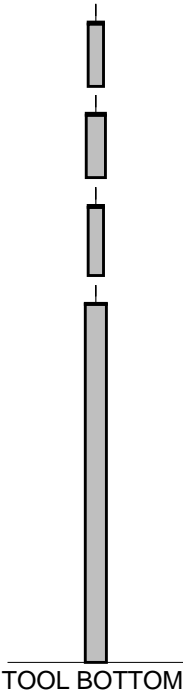
RUN 1		
SURFACE EQUIPMENT		
MWPM-AA 3008		
DOWNHOLE EQUIPMENT		
AH-SWBS 731		12.08
AH-SWBS 761		11.40
AH-SWBS 762		10.71
AH-SWBS 763		10.02
MH-SWHS 726		9.34
AH-124 1001		9.01
MWPG-AA 24028 MWGH-AA 68	MWPG GR	8.91 2.41
MWPH-AA 10 MWPS-AA 93	CCL SMWP Pres SMWP Temp Tension	7.93 TOOL ZERO
AH-Flex-Joint 42		5.11

SAH-G 1035

MPD-H 2868

AH-ESIC 15042003

GUN 1 2 mtr Phased Powerjet.



4.65

4.12

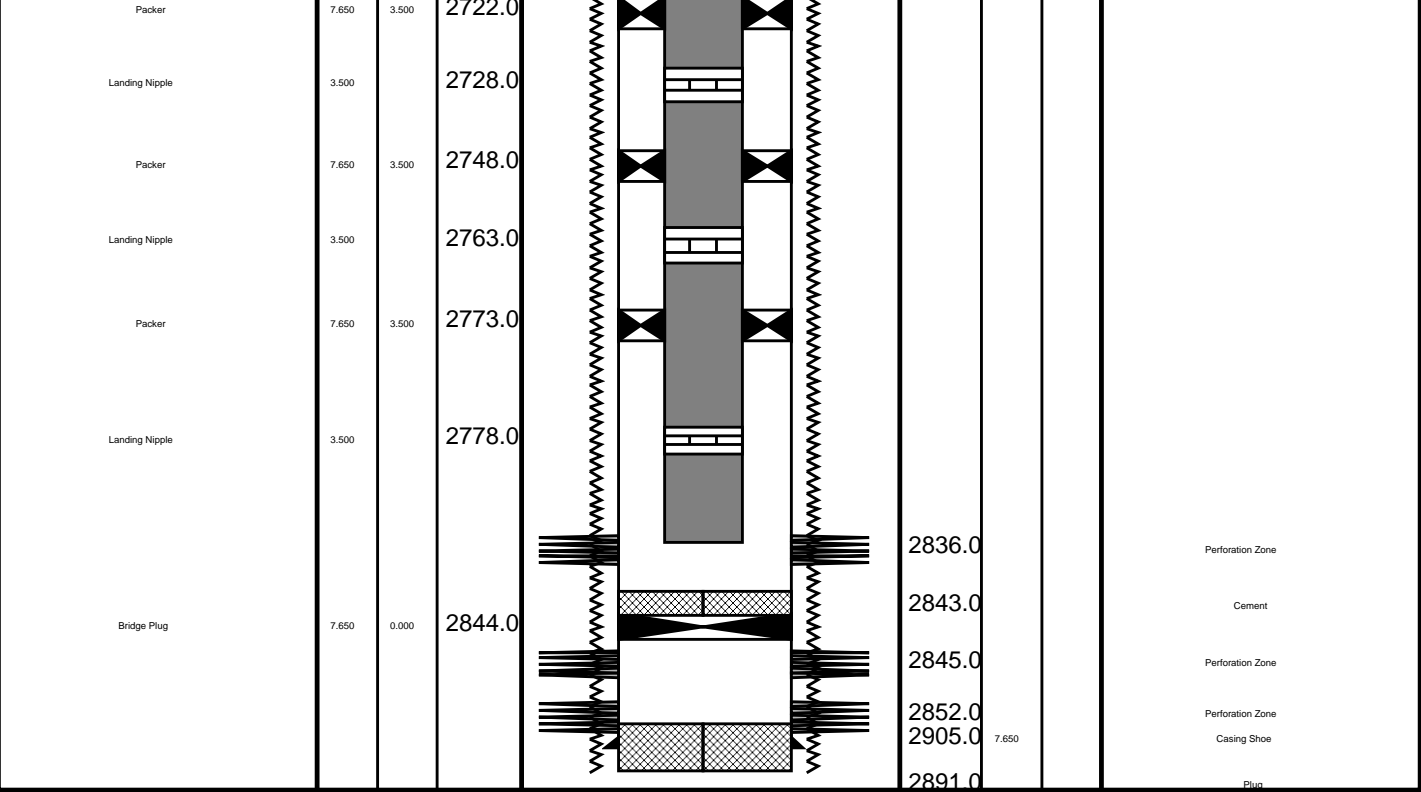
3.58

3.00

TOOL BOTTOM

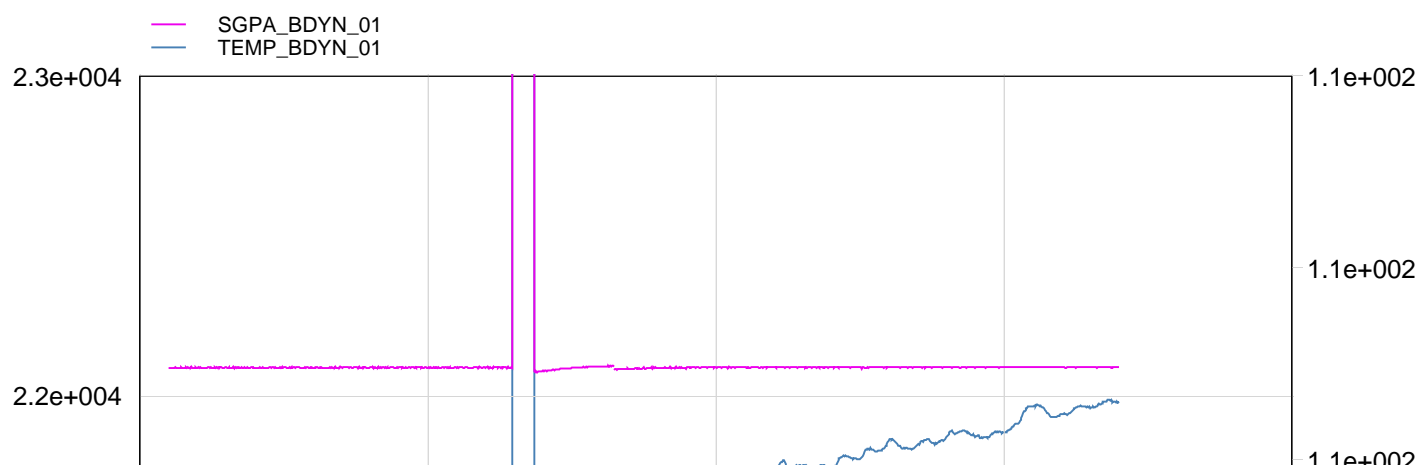
MAXIMUM STRING DIAMETER 2.13 IN  
MEASUREMENTS RELATIVE TO TOOL ZERO  
ALL LENGTHS IN METERS

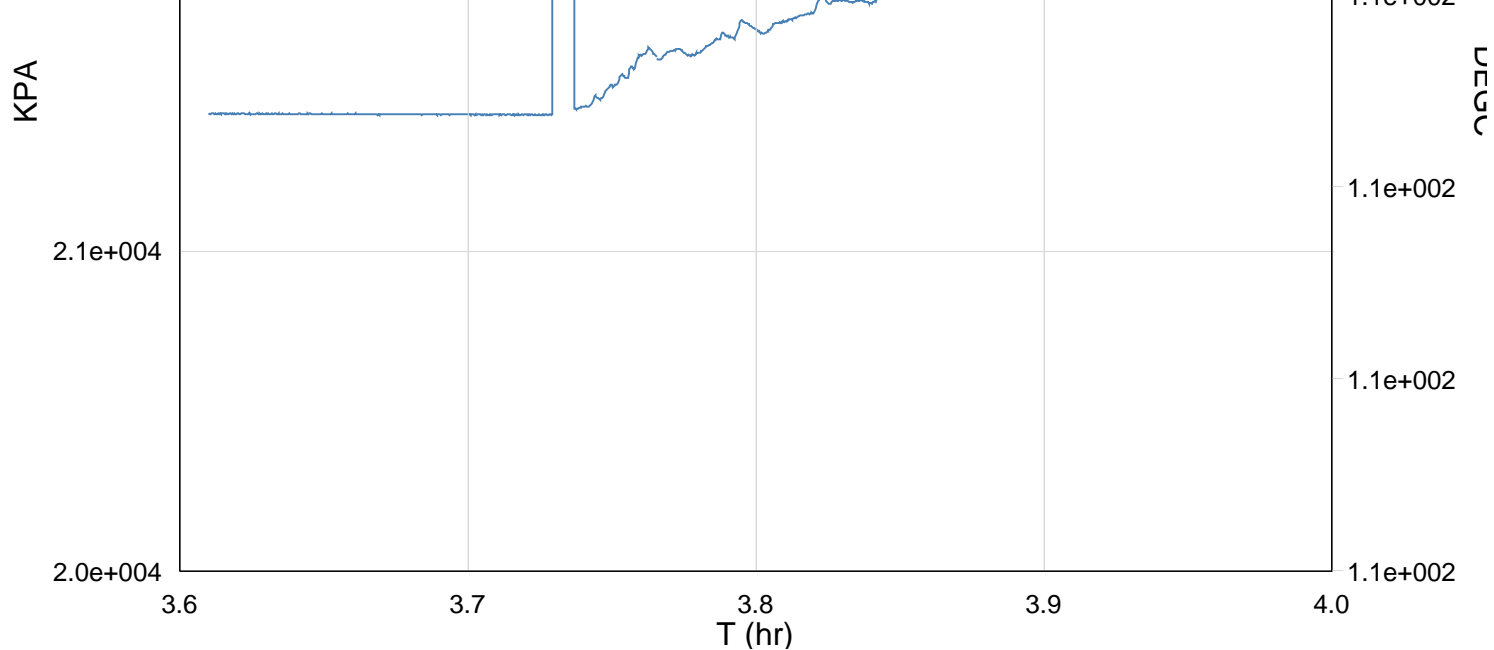
Production String	(in)		(m)	Well Schematic	(m)	(in)		Casing String
	OD	ID	MD		MD	OD	ID	
Tubing Hanger	8.000	3.500	12.5		13.0	10.750		Casing String
Tubing	3.500	2.900	12.6		13.0	7.650		Casing String
					13.0	7.625	7.650	Liner Hanger
					20.0	12.500		Borehole Segment
SSSV	3.500		443.0					
Gas Lift Mandrel	3.500		793.0		611.0	10.750		Casing Shoe
					610.0	9.560		Borehole Segment
Gas Lift Mandrel	3.500		1247.0					
Gas Lift Mandrel	3.500		1430.0					
Gas Lift Mandrel	3.500		1708.0					
Landing Nipple	3.500		1724.0					



Gun # 1  
2815m to 2817m MDKB

MAXIS Field Log





TIME TEMP\_MWPT\_S SGPA\_SL

3840.0	234.15	3203.909
3780.0	234.01	3203.909
3720.0	233.88	3203.872
3660.0	233.87	3203.909
3600.0	233.71	3203.909
3540.0	233.69	3203.763
3480.0	233.54	3203.801
3420.0	233.43	3203.909
3360.0	233.24	3203.854
3300.0	233.16	3203.727
3240.0	233.05	3203.186
3180.0	232.75	3202.231
3120.0	224115.72	19426666.000
3060.0	232.48	3203.854
3000.0	232.48	3203.909
2940.0	232.48	3203.783
2880.0	232.48	3203.654
2820.0	232.48	3203.890
2760.0	232.49	3203.909
2700.0	232.49	3203.728
2640.0	232.48	3203.584

**Schlumberger**

Shooting Pass

MAXIS Field Log

# Input DLIS Files

DEFAULT PERFO\_041LUP FN:39 PRODUCER 11-Feb-2007 03:31 2838.6 M 2811.8 M

# Output DLIS Files

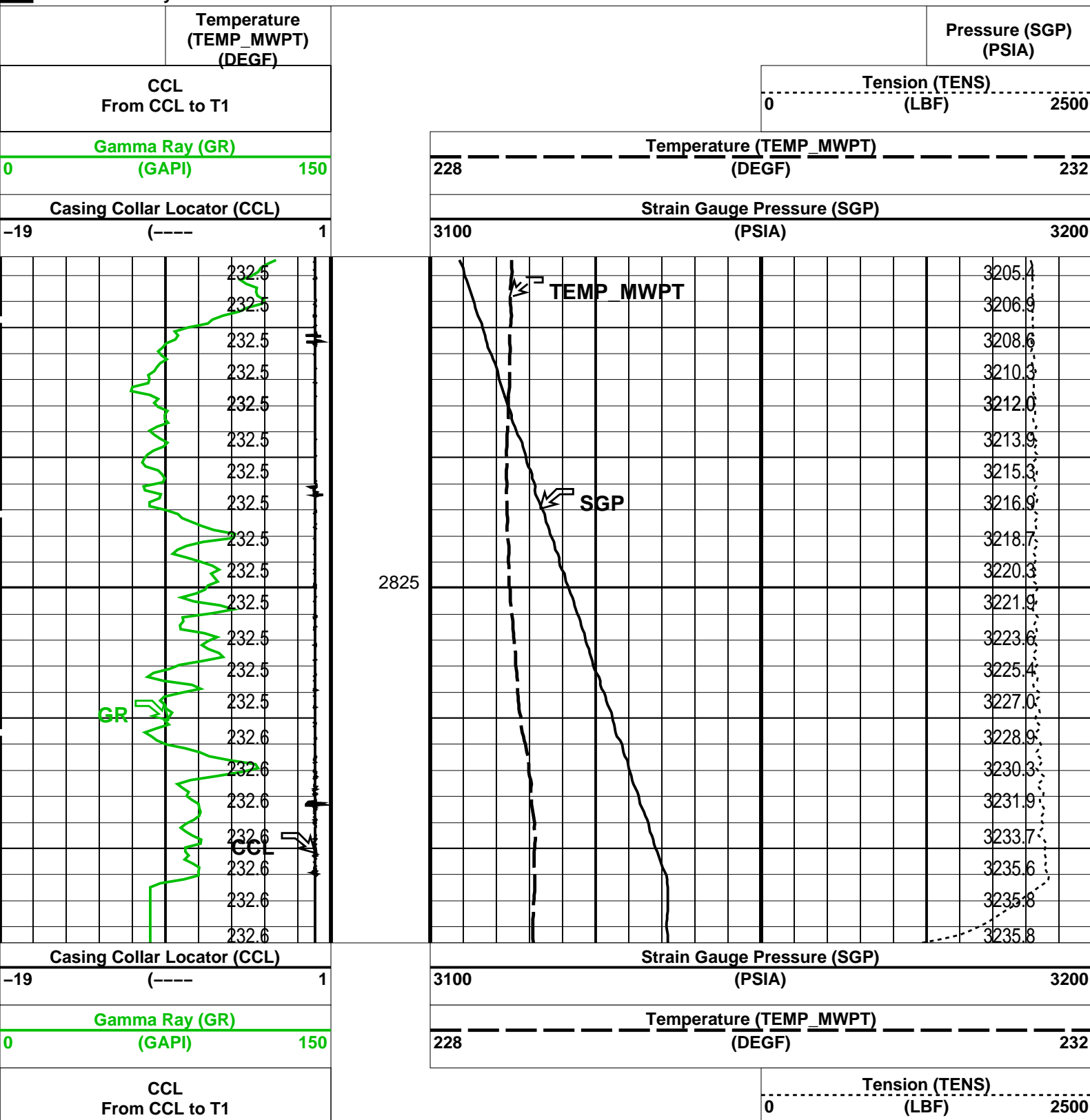
DEFAULT PERFO\_056PUP FN:53 PRODUCER 11-Feb-2007 08:08 2838.6 M 2812.2 M

OP System Version: 14C0-302  
MCM

MWP\_GUN SRC-3220-WPP-AAP\$ MWPT-CA SRC-3220-WPP-AAP\$  
MWGT-AA SRC-3220-WPP-AAP\$

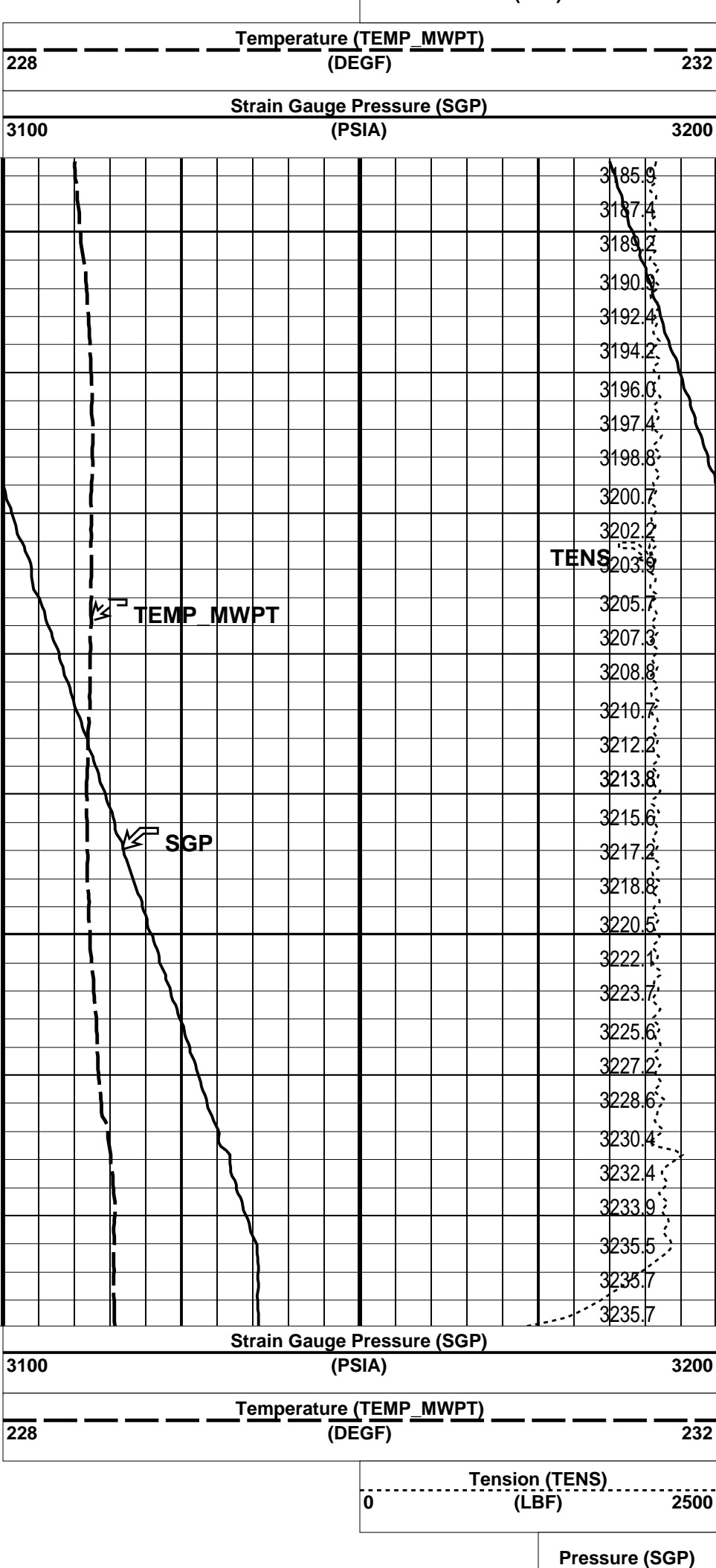
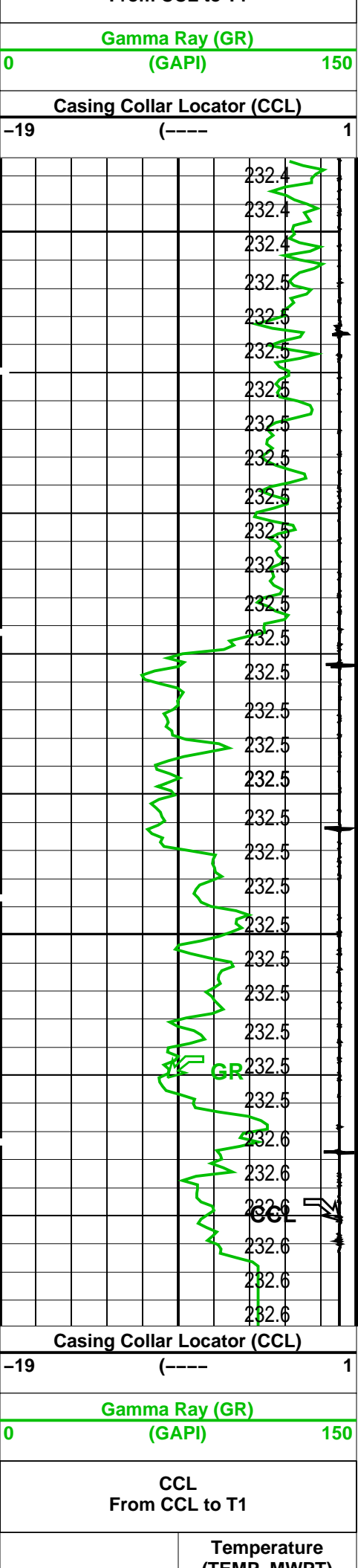
## PIP SUMMARY

Time Mark Every 60 S





	Temperature (TEMP_MWPT) (DEGF)				Pressure (SGP) (PSIA)
PIP SUMMARY					
Time Mark Every 60 S					
Parameters					
DLIS Name	Description	Value			
MWPT-CA: MEASUREMENT WHILE PERFORATING TOOL					
DEVI_FL_CORR	Deviation Angle for Flow Line Correction	0	DEG		
FLD	Flow Line Density	1	G/C3		
MWPT_NULL_SOURCE	MWPT NULL Temperature Source	TEMS			
MWPT_NULL_TEMP	MWPT NULL Temperature	0.0	DEGC		
System and Miscellaneous					
DO	Depth Offset for Playback	0.0	M		
PP	Playback Processing	NORMAL			
Format: MWP	Vertical Scale: 1:200	Graphics File Created: 11-Feb-2007 08:08			
OP System Version: 14C0-302					
MCM					
MWP_GUN	SRC-3220-WPP-AAP5	MWPT-CA	SRC-3220-WPP-AAP5		
MWGT-AA	SRC-3220-WPP-AAP5				
Input DLIS Files					
DEFAULT	PERFO_041LUP	FN:39	PRODUCER	11-Feb-2007 03:31	2838.6 M 2811.8 M
Output DLIS Files					
DEFAULT	PERFO_056PUP	FN:53	PRODUCER	11-Feb-2007 08:08	
Schlumberger					
Correlation Pass					
MAXIS Field Log					
Company: Esso Australia Pty/Ltd. Well: A-5					
Input DLIS Files					
DEFAULT	PERFO_040LUP	FN:38	PRODUCER	11-Feb-2007 03:20	2838.9 M 2796.7 M
Output DLIS Files					
DEFAULT	PERFO_055PUP	FN:52	PRODUCER	11-Feb-2007 08:06	2838.9 M 2797.3 M
OP System Version: 14C0-302					
MCM					
MWP_GUN	SRC-3220-WPP-AAP5	MWPT-CA	SRC-3220-WPP-AAP5		
MWGT-AA	SRC-3220-WPP-AAP5				
PIP SUMMARY					
Time Mark Every 60 S					
	Temperature (TEMP_MWPT) (DEGF)				Pressure (SGP) (PSIA)
CCL From CCL to T1				Tension (TENS) ----- (LBF)	2500
				0	



	(TEMP_MWPT) (DEGC)	PIP SUMMARY				(PSIA)
Time Mark Every 60 S						
Parameters						
DLIS Name		Description			Value	
MWPT-CA: MEASUREMENT WHILE PERFORATING TOOL						
DEVI_FL_CORR		Deviation Angle for Flow Line Correction			0	DEG
FLD		Flow Line Density			1	G/C3
MWPT_NULL_SOURCE		MWPT NULL Temperature Source			TEMS	
MWPT_NULL_TEMP		MWPT NULL Temperature			0.0	DEGC
System and Miscellaneous						
DO		Depth Offset for Playback			0.0	M
PP		Playback Processing			NORMAL	
Format: MWP		Vertical Scale: 1:200		Graphics File Created: 11-Feb-2007 08:06		
OP System Version: 14C0-302						
MCM						
MWP_GUN		SRC-3220-WPP-AAP		MWPT-CA		SRC-3220-WPP-AAP
MWGT-AA		SRC-3220-WPP-AAP				
Input DLIS Files						
DEFAULT	PERFO_040LUP	FN:38	PRODUCER	11-Feb-2007 03:20	2838.9 M	2796.7 M
Output DLIS Files						
DEFAULT	PERFO_055PUP	FN:52	PRODUCER	11-Feb-2007 08:06		
Company: Esso Australia Pty/Ltd.						
Well: A-5						
Field: Flounder						
Rig: Prod 4 / Crane						
Country: Australia						
2 1/8" Phased Powerjet						
Mwpt						
Perforation Record						

Schlumberger