

Company: Esso Australia Pty Ltd.

Well: A-19a
Field: Flounder
Rig : Prod4 / Crane
Country: Australia

Prod4 / Crane
Rig :
Field: Flounder
Location: Gippsland
Well: A-19a
Company: Esso Australia Pty Ltd.

2 1/2" Pendulum Phased
Powerjet Perforation
Record

LOCATION		
Gippsland		Elev.: K.B. 48.8 m
Basin		G.L. 93 m
Bass Strait		D.F. 48.8 m
Permanent Datum:	M.S.L. _____	Elev.: 0 m _____
Log Measured From:	D.F. _____	48.8 m above Perm. Datum
Drilling Measured From:	D.F. _____	
State: Victoria	Max. Well Deviation 48 deg	Longitude 148°26'17.735"E Latitude 038°18'44.633S

Logging Date	16-Feb-2007		
Run Number	1 & 2		
Depth Driller	3048.5 m		
Schlumberger Depth	3048.5 m		
Bottom Log Interval	3046.5 m		
Top Log Interval	3000 m		
Casing Fluid Type	Production Fluids		
Salinity			
Density			
Fluid Level	1175 m		
BIT/CASING/TUBING STRING			
Bit Size	9.875 in		
From			
To			
Casing/Tubing Size	7.625 in		
Weight	29.7 lbm/ft		
Grade	L-80		
From	20.29 m		
To	3470 m		
Maximum Recorded Temperatures	230 degf		
Logger On Bottom	16-Feb-2007		8:00
Unit Number	889	Prod4 / Ausl	
Recorded By	S Gilbert & G Wright.		
Witnessed By	B White & B Robinson.		





















PVT DATA			Run 1
Oil Density			
Water Salinity			
Gas Gravity			
Bo			
Bw			
1/Bg			
Bubble Point Pressure			
Bubble Point Temperature			
Solution GOR			
Maximum Deviation	48 deg		
CEMENTING DATA			
Primary/Squeeze	Primary		
Casing String No			
Lead Cement Type			
Volume			
Density			
Water Loss			
Additives			
Tail Cement Type			
Volume			
Density			
Water Loss			
Additives			
Expected Cement Top			
Logging Date			
Run Number			
Depth Driller			
Schlumberger Depth			
Bottom Log Interval			
Top Log Interval			
Casing Fluid Type			
Salinity			
Density			
Fluid Level			
BIT/CASING/TUBING STRING			
Bit Size			
From			
To			
Casing/Tubing Size			
Weight			
Grade			
From			
To			
Maximum Recorded Temperatures			
Logger On Bottom			
Unit Number			
Recorded By			
Witnessed By			

CCL Stop Depth : 3037m MDKB
Before Perforation SBHP: 2552 psia SBHT: 226 degf.
After Perforation SBHP: 2321 psia SBHT: 227 degf.
Gun # 2 was required after Gun # 1 was damaged running in hole and only shot the top 1.7mtr of the gun.
Gun two,3042.2m to 3046.5m MDKB SBHP = 2546 psia,SBHT = 226 degf.
After the gun was fired SBHP = 2434 psia,SBHT = 230 degf.
Crew : J Annear,P Lawrence,B Flynn,L Dooley.

RUN 1			RUN 2		
SERVICE ORDER #:		AusI073362561			
PROGRAM VERSION:		14C0-302			
FLUID LEVEL:		1175 m			
LOGGED INTERVAL	START	STOP	LOGGED INTERVAL	START	STOP

EQUIPMENT DESCRIPTION

RUN 1		RUN 2	
SURFACE EQUIPMENT		SURFACE EQUIPMENT	
MWPM-AA 3008		MWPM-AA 3008	

DOWNHOLE EQUIPMENT			DOWNHOLE EQUIPMENT		
AH-SWBS 731		14.62	AH-SWBS 731		13.61
AH-SWBS 731			AH-SWBS 731		
AH-SWBS 761		13.94	AH-SWBS 761		12.92
AH-SWBS 761			AH-SWBS 761		
AH-SWBS 762		13.25	AH-SWBS 762		12.23
AH-SWBS 762			AH-SWBS 762		
MH-SWHS 726		12.56	MH-SWHS 726		11.55
MH-SWHS 726			MH-SWHS 726		
MWGT-AA 68		12.23	MWGT-AA 68		11.22
MWPG-AA 24029	MWPG GR		MWPG-AA 24029	MWPG GR	
MWGH-AA 68		2.41	MWGH-AA 68		2.41
MWPT-CA 93		11.26	MWPT-CA 93		10.24
MWPH-AA 10			MWPH-AA 10		
MWPS-AA 93			MWPS-AA 93		
	CCL SMWP Pres SMWP Temp Tension			CCL SMWP Pres SMWP Temp Tension	
		TOOL ZERO			TOOL ZERO
SAH-G 1035		8.44	SAH-G 1035		7.42
SAH-G 1035			SAH-G 1035		
AH-FLEX 42		7.88	AH-FLEX 42		6.86
AH-FLEX 42			AH-FLEX 42		
MPD-H 2868		7.34	MPD-H 2868		6.33
MPD-H 2868			MPD-H 2868		
AH-ESIC 15042003		6.81	AH-ESIC 15042003		5.70
AH-ESIC 15042003			AH-ESIC 15042003		

MWP_GUN
GUN-6m 2.5" Powerjet Spiral Gun 1

TOOL BOTTOM

MAXIMUM STRING DIAMETER 2.13 IN
MEASUREMENTS RELATIVE TO TOOL ZERO
ALL LENGTHS IN METERS

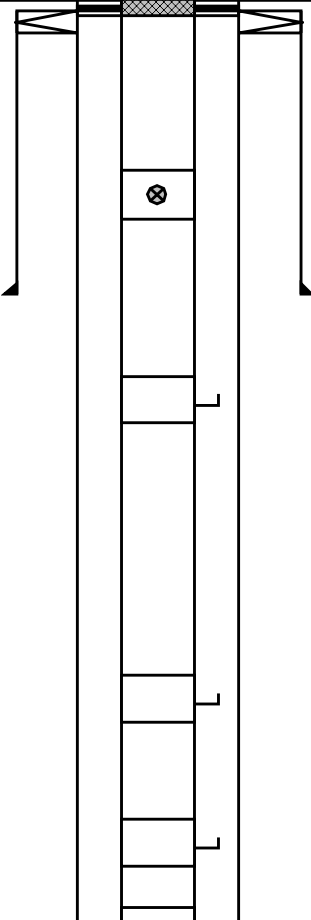
6.35

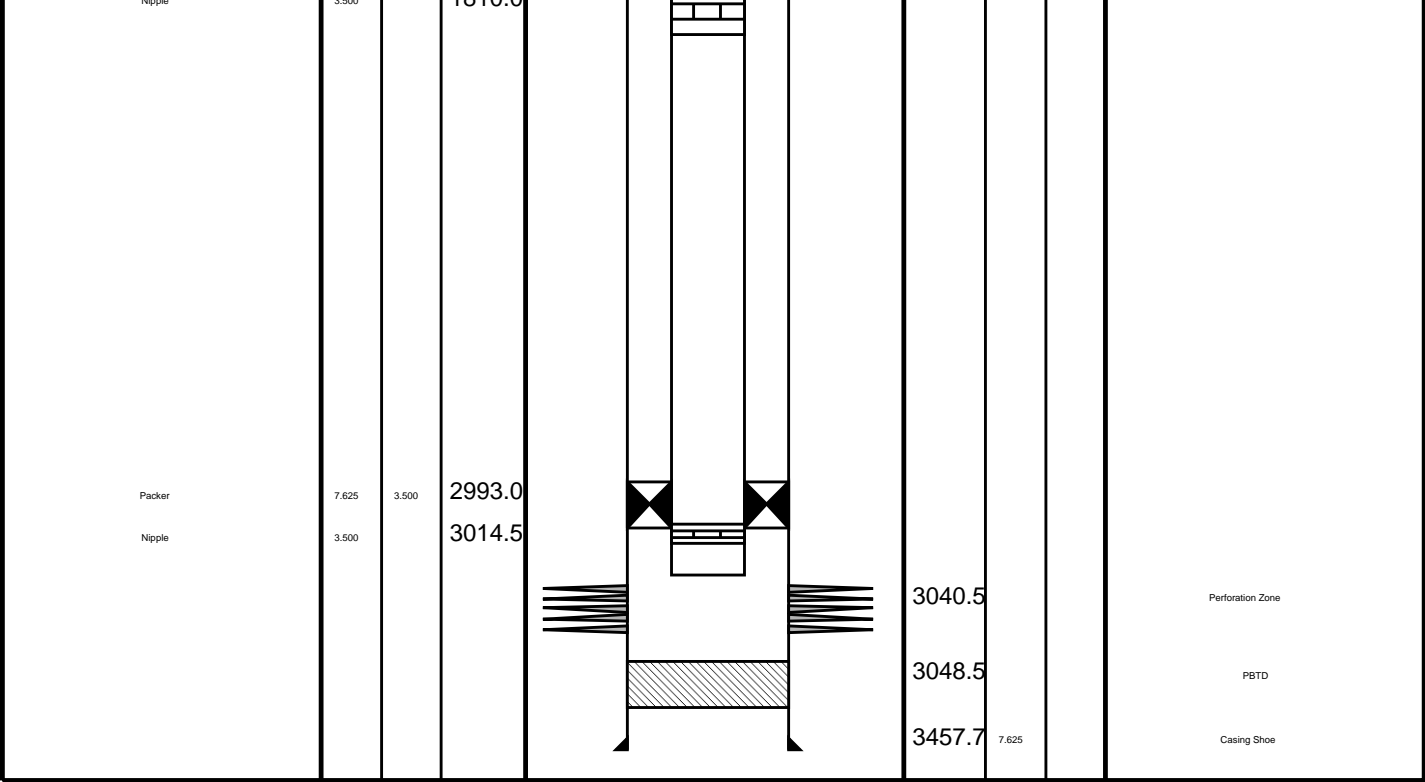
API-ESIC 15042003
AH-ESIC 15042003

TOOL BOTTOM

MAXIMUM STRING DIAMETER 2.13 IN
MEASUREMENTS RELATIVE TO TOOL ZERO
ALL LENGTHS IN METERS

5.33

Production String	(in)		(m)	Well Schematic	(m)		(in)	Casing String
	OD	ID	MD		MD	OD	ID	
	3.500	3.500	18.0		20.3	7.625		Casing String Liner Hanger
					20.3	13.372	7.625	
Shut-in Valve	3.500		449.0					
					607.7	13.372		Casing Shoe
Gas Lift Mandrel	3.500		875.0					
Gas Lift Mandrel	3.500		1493.0					
Gas Lift Mandrel	3.500		1792.0					
Nipple	3.500		1810.0					



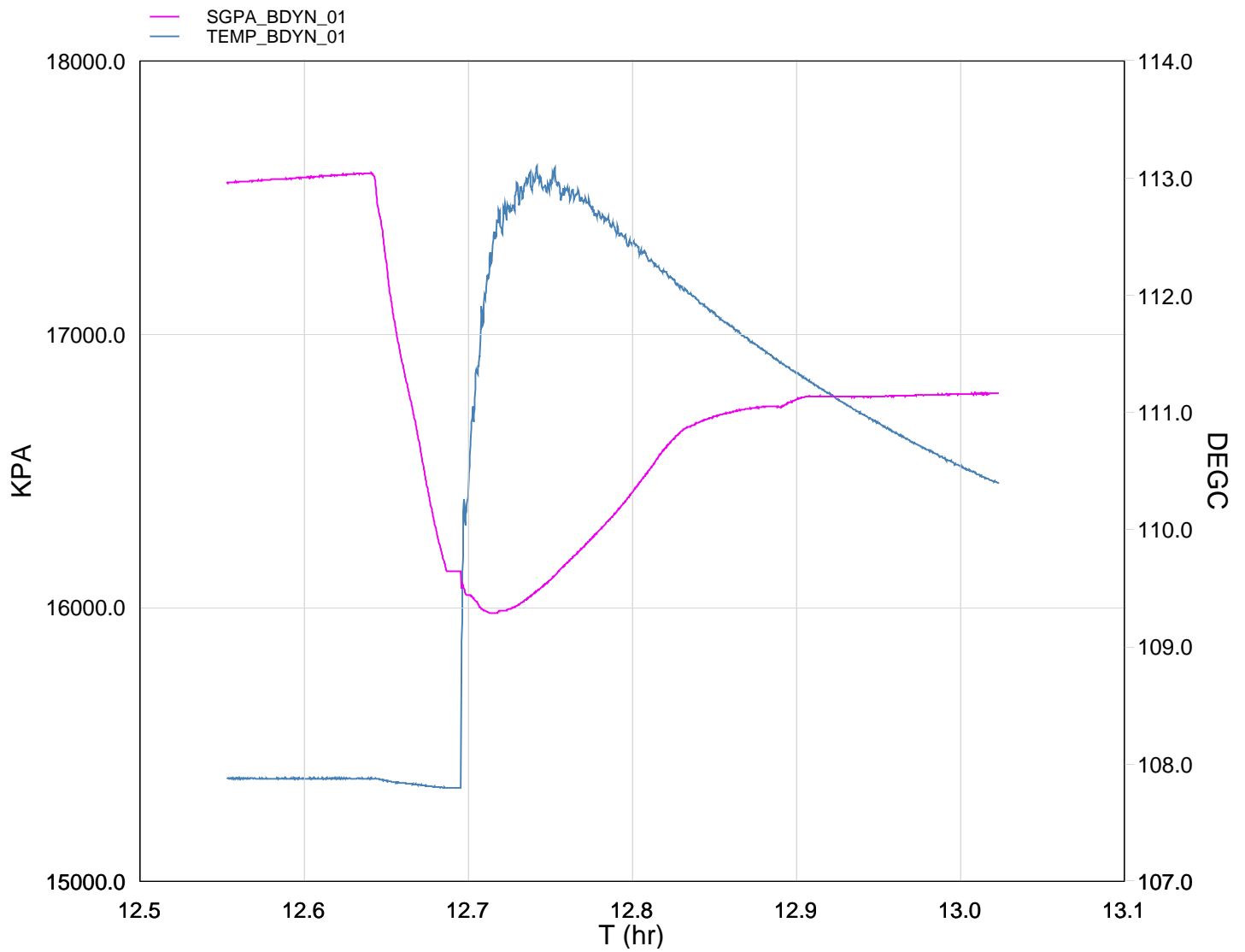
Schlumberger Job Event Summary

Time	Elapsed Time	Depth (M)	File
Log Pass (down)	16-Feb-2007 11:54	000:29	900.8 - 3045.3 PERFO_019LDP
Log Pass (up)	16-Feb-2007 12:24	000:03	3041.0 - 3011.1 PERFO_020LUP
Log Pass (up)	16-Feb-2007 12:31	000:34	3045.9 - 3002.4 PERFO_021LUP
Station Log	16-Feb-2007 12:32	000:29	3038.7 - 4.3 PERFO_022LTP



Gun # 2
3042.2m to 3046.5m MDKB

MAXIS Field Log



TIME PSIA DEGF

4020.0	2434.6867	230.7105
3960.0	2434.0512	230.8964
3900.0	2433.8272	231.0978
3840.0	2433.3915	231.3137
3780.0	2432.9358	231.5544
3720.0	2432.6488	231.7815
3660.0	2432.6650	232.0387
3600.0	2432.7097	232.3040
3540.0	2427.2044	232.5736
3480.0	2426.4666	232.8840
3420.0	2423.7223	233.1873
3360.0	2418.7846	233.5322
3300.0	2408.3802	233.8654
3240.0	2389.3701	234.2492
3180.0	2370.9704	234.6043
3120.0	2355.5001	235.0325
3060.0	2341.2659	235.0748
3000.0	2328.0938	235.4062
2940.0	2319.3893	234.7914
2880.0	2321.8763	232.5167
2820.0	2340.2324	226.0376
2760.0	2302.7128	226.0310

2760.0	2393.7138	226.0710
2700.0	2465.6435	226.1193
2640.0	2551.0668	226.1788
2580.0	2550.4006	226.1850
2520.0	2549.3362	226.1762
2460.0	2548.1399	226.1755
2400.0	2547.4680	226.1857
2340.0	2546.3575	226.1820

Schlumberger

Shooting Pass

MAXIS Field Log

Company: Esso Australia Pty Ltd.

Well: A-19a

Output DLIS Files

DEFAULT	PERFO_021LUP	FN:20	PRODUCER	16-Feb-2007 12:31	3045.9 M	3002.4 M
---------	--------------	-------	----------	-------------------	----------	----------

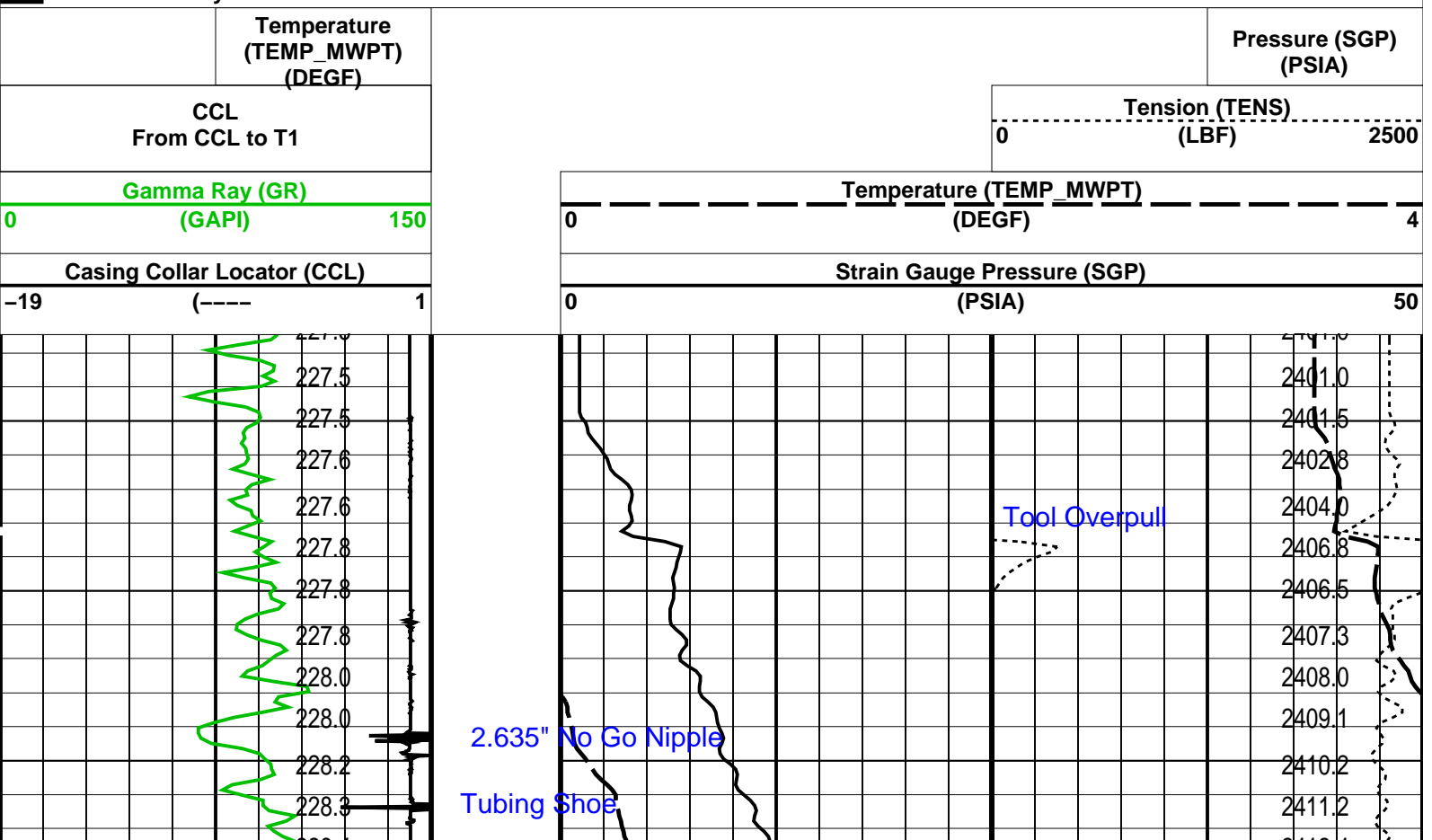
OP System Version: 14C0-302

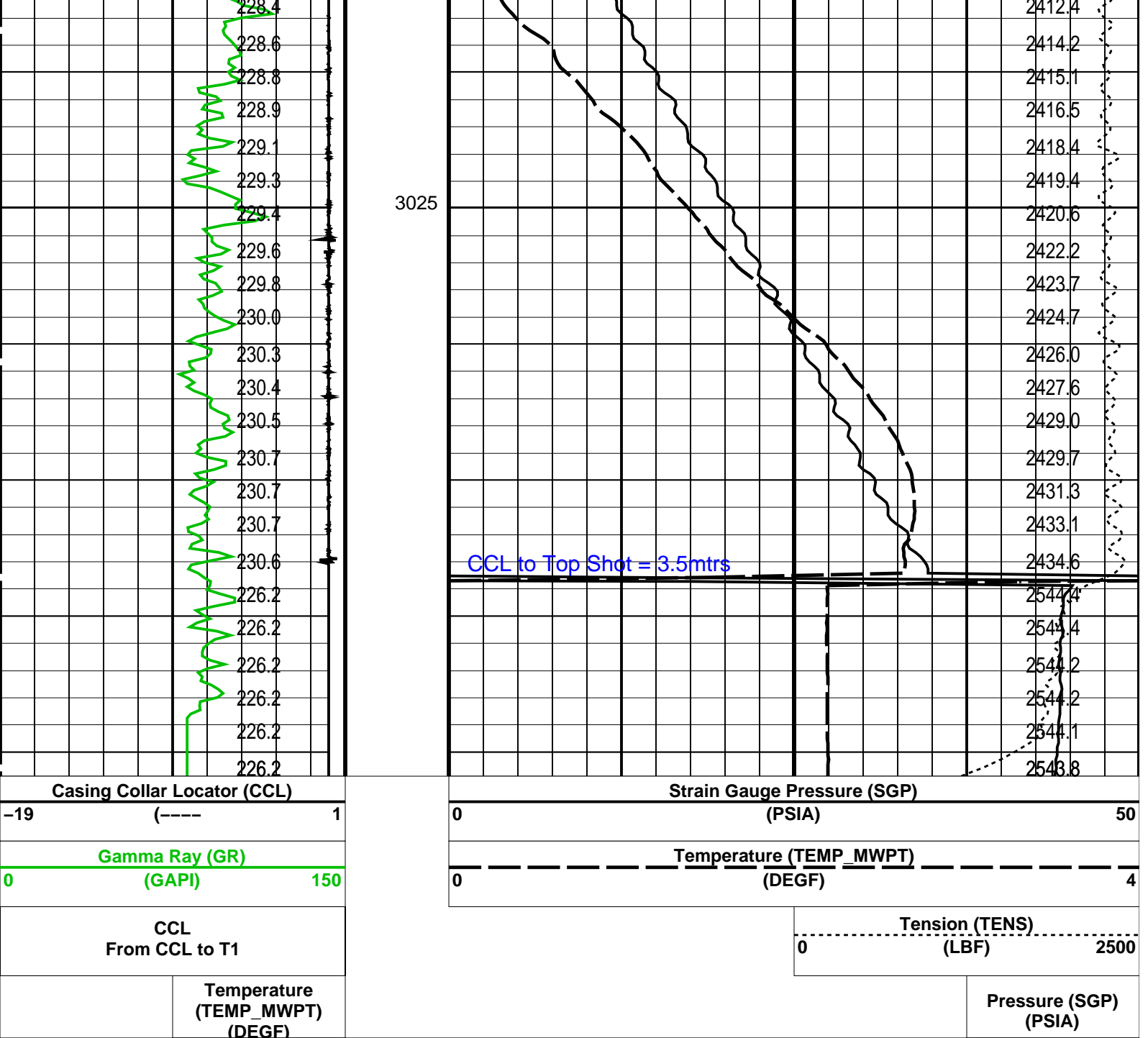
MCM

MWP_GUN	SRC-3220-WPP-AAP\$	MWPT-CA	SRC-3220-WPP-AAP\$
MWGT-AA	SRC-3220-WPP-AAP\$		

PIP SUMMARY

☒ Time Mark Every 60 S





PIP SUMMARY

Time Mark Every 60 S

Parameters

DLIS Name	Description	Value
MWPT-CA: MEASUREMENT WHILE PERFORATING TOOL		
DEVI_FL_CORR	Deviation Angle for Flow Line Correction	0 DEG
FLD	Flow Line Density	1 G/C3
MWPT_NULL_SOURCE	MWPT NULL Temperature Source	TEMS
MWPT_NULL_TEMP	MWPT NULL Temperature	0.0 DEGC

Format: MWP Vertical Scale: 1:200

Graphics File Created: 16-Feb-2007 12:31

OP System Version: 14C0-302 MCM

MWP_GUN SRC-3220-WPP-AAP5 MWPT-CA SRC-3220-WPP-AAP5
MWGT-AA SRC-3220-WPP-AAP5

Output DLIS Files

DEFAULT PERFO 021LUP FN:20 PRODUCER 16-Feb-2007 12:31



Correlation Pass

MAXIS Field Log

Company: Esso Australia Pty Ltd. Well: A-19a

Output DLIS Files

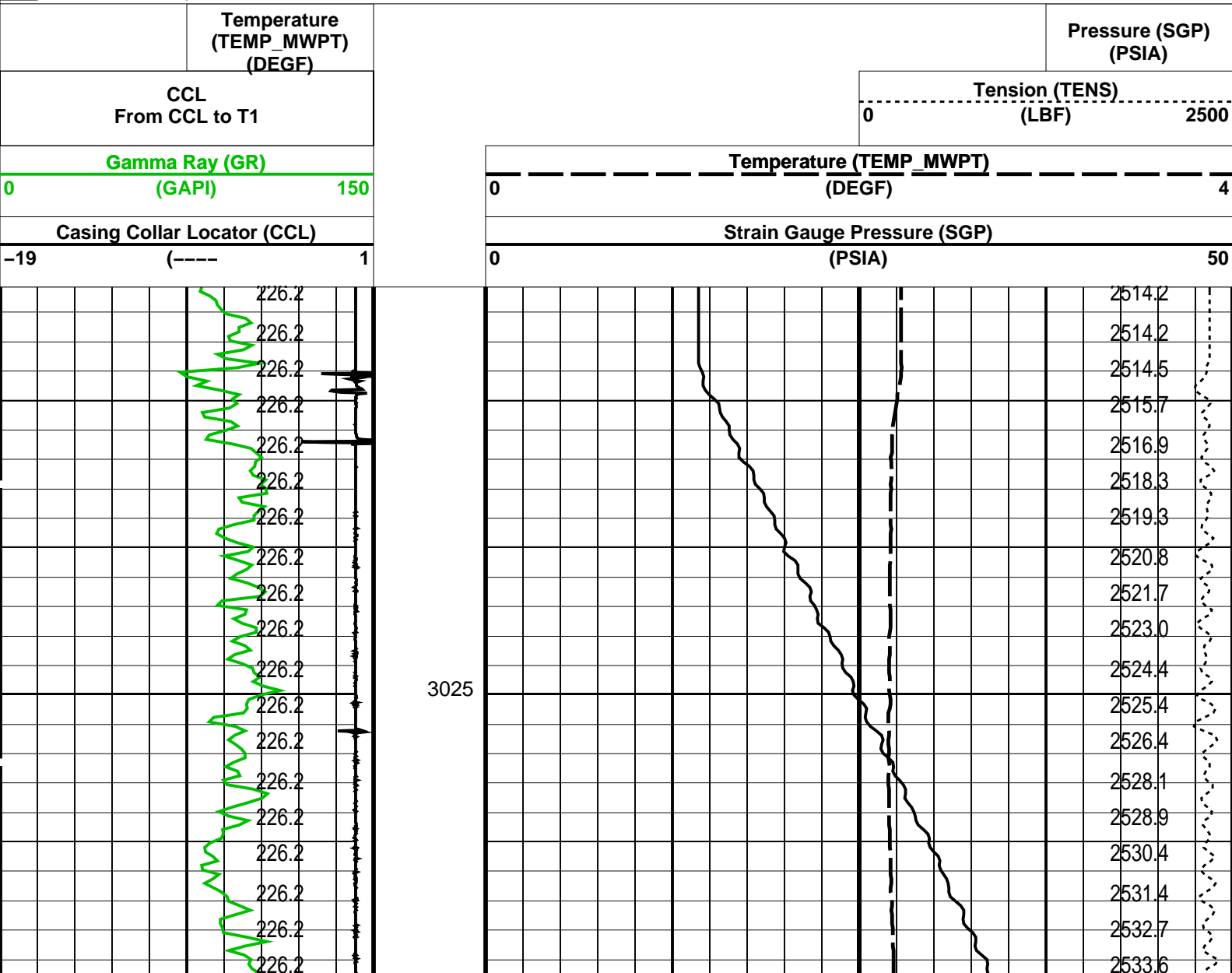
DEFAULT PERFO_020LUP FN:19 PRODUCER 16-Feb-2007 12:24

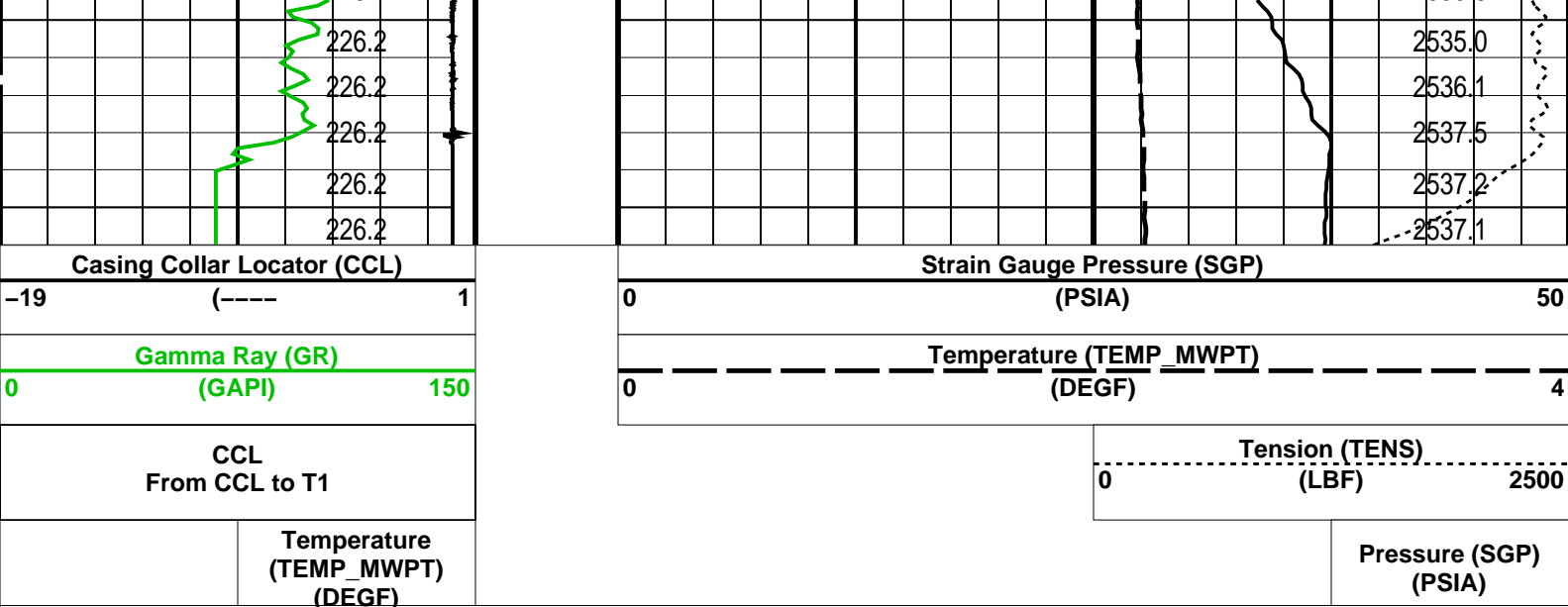
OP System Version: 14C0-302
MCM

MWP_GUN SRC-3220-WPP-AAP\$ MWPT-CA SRC-3220-WPP-AAP\$
MWGT-AA SRC-3220-WPP-AAP\$

PIP SUMMARY

Time Mark Every 60 S





PIP SUMMARY

Time Mark Every 60 S

Parameters		
DLIS Name	Description	Value
MWPT-CA: MEASUREMENT WHILE PERFORATING TOOL		
DEVI_FL_CORR	Deviation Angle for Flow Line Correction	0 DEG
FLD	Flow Line Density	1 G/C3
MWPT_NULL_SOURCE	MWPT NULL Temperature Source	TEMS
MWPT_NULL_TEMP	MWPT NULL Temperature	0.0 DEGC

Format: MWP Vertical Scale: 1:200 Graphics File Created: 16-Feb-2007 12:24

OP System Version: 14C0-302			
MCM			
MWP_GUN	SRC-3220-WPP-AAP5	MWPT-CA	SRC-3220-WPP-AAP5
MWGT-AA	SRC-3220-WPP-AAP5		

Output DLIS Files			
DEFAULT	PERFO_020LUP	FN:19	PRODUCER 16-Feb-2007 12:24

Job Events Summary

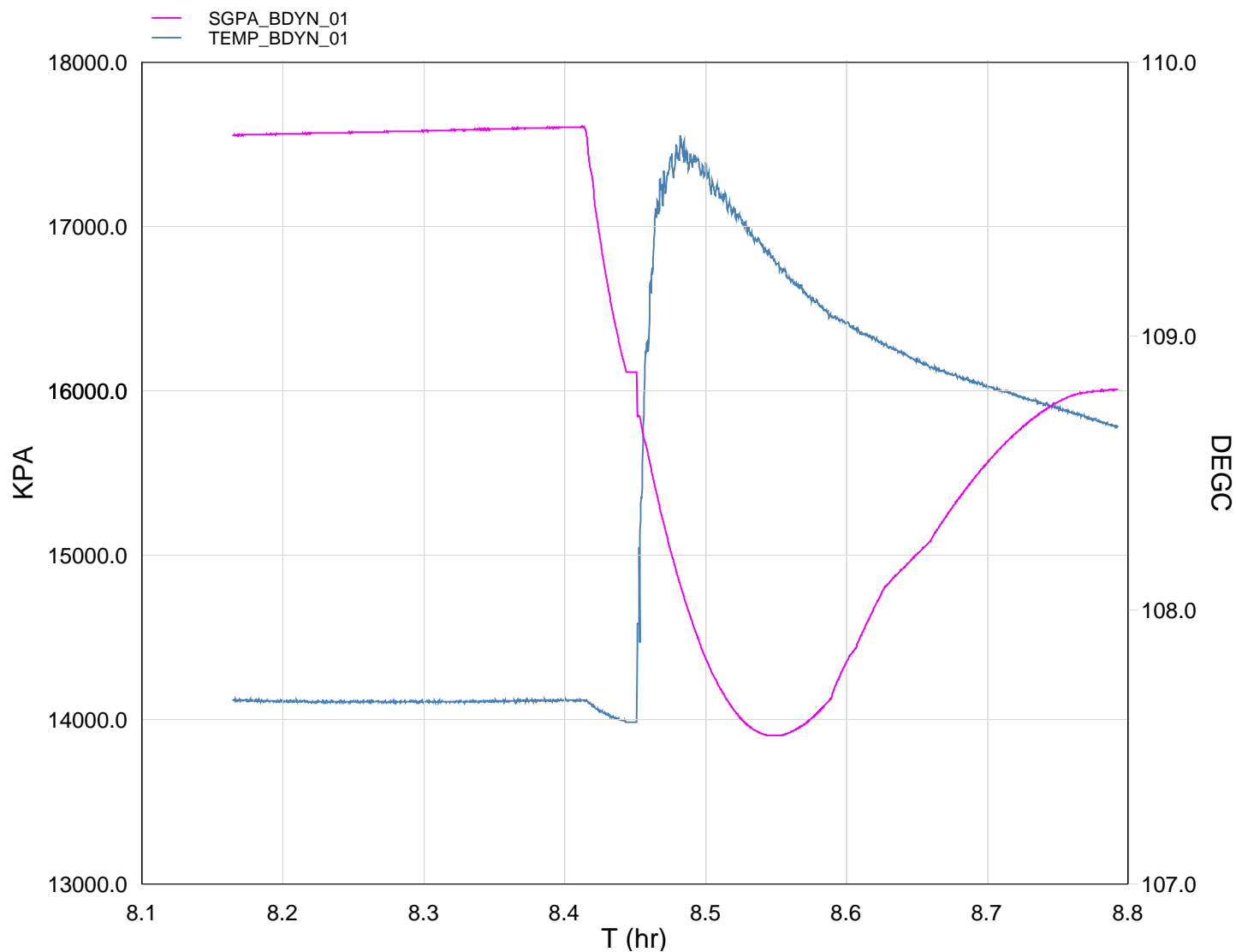
MAXIS Field Log

Schlumberger Job Event Summary					
Time	Elapsed Time	Depth (M)	File		
Log Pass (down)	16-Feb-2007 7:35	000:24	1141.8 - 3040.2	PERFO_010LDP	
Log Pass (up)	16-Feb-2007 7:58	000:04	3040.2 - 3018.1	PERFO_011LUP	
Log Pass (up)	16-Feb-2007 8:02	000:03	3032.8 - 3010.1	PERFO_012LUP	
Log Pass (up)	16-Feb-2007 8:06	000:49	3040.1 - 2979.3	PERFO_013LUP	
Station Log	16-Feb-2007 8:09	000:38	3037.0 - 5.8	PERFO_014LTP	



Gun # 1
3040.5m to 3042.2m MDKB

MAXIS Field Log



TIME	PSIA	DEGF
4320.0	2321.2576	227.6332
4260.0	2318.9013	227.6782
4200.0	2310.6264	227.7268
4140.0	2297.1094	227.7782
4080.0	2279.2128	227.8270
4020.0	2257.1550	227.8707

4020.0	2257.1550	227.8707
3960.0	2231.4174	227.9196
3900.0	2202.1839	227.9760
3840.0	2175.9626	228.0379
3780.0	2155.3444	228.1174
3720.0	2120.5965	228.1997
3660.0	2080.9028	228.2818
3600.0	2041.2567	228.3845
3540.0	2023.5712	228.5259
3480.0	2016.4359	228.6830
3420.0	2022.8899	228.8618
3360.0	2046.1650	229.0499
3300.0	2085.6896	229.2655
3240.0	2145.2781	229.4343
3180.0	2223.5851	229.0034
3120.0	2337.4087	225.6628
3060.0	2396.8758	225.7036
3000.0	2537.4059	225.7932
2940.0	2553.3628	225.8059
2880.0	2552.8018	225.8082
2820.0	2552.3011	225.8083
2760.0	2551.7732	225.8007
2700.0	2551.3045	225.8007
2640.0	2550.6833	225.7982
2580.0	2550.2165	225.8007
2520.0	2549.8106	225.7982
2460.0	2549.4364	225.7983
2400.0	2548.7849	225.8057
2340.0	2548.2522	225.7981
2280.0	2548.0071	225.7982
2220.0	2547.4133	225.8032
2160.0	2546.6442	225.8057
2100.0	2546.4226	225.8110

Schlumberger

Shoot Pass
Top shot @ 3040.5m MDKB

MAXIS Field Log

Company: Esso Australia Pty Ltd.

Well: A-19a

Output DLIS Files

DEFAULT	PERFO_013LUP	FN:12	PRODUCER	16-Feb-2007 08:06	3040.1 M	2979.3 M
---------	--------------	-------	----------	-------------------	----------	----------

OP System Version: 14C0-302
MCM

MWP_GUN	SRC-3220-WPP-AAP\$	MWPT-CA	SRC-3220-WPP-AAP\$
MWGT-AA	SRC-3220-WPP-AAP\$		

PIP SUMMARY

☐ Time Mark Every 60 S

Temperature
(TEMP MWPT)

Pressure (SGP)
(PGIA)

(DEGF)

CCL
From CCL to T1

Gamma Ray (GR)
(GAPI)

Casing Collar Locator (CCL)

0

150

-19

1

Tension (TENS)
(LBF)

Temperature (TEMP_MWPT)
(DEGF)

Strain Gauge Pressure (SGP)
(PSIA)

0

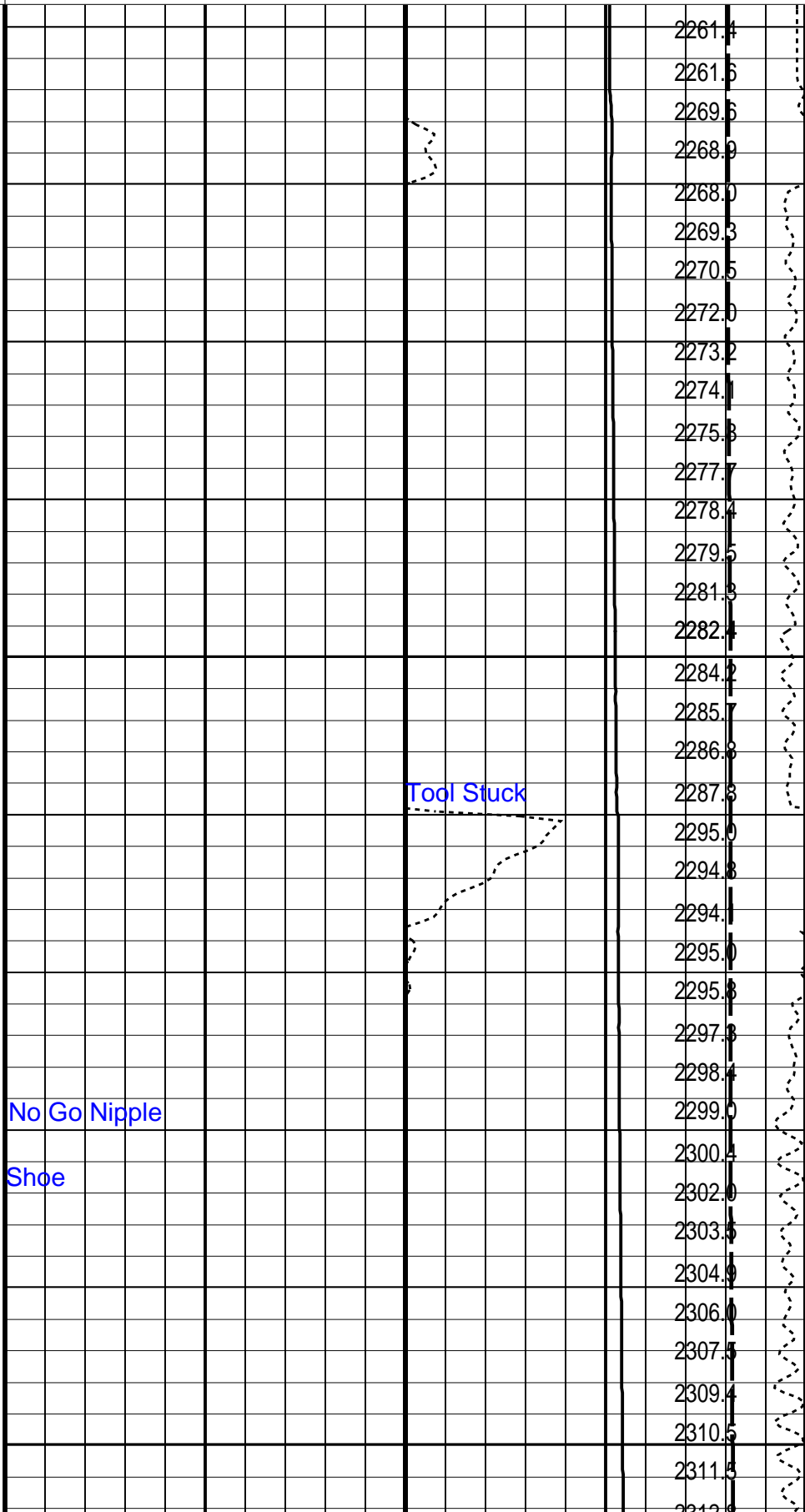
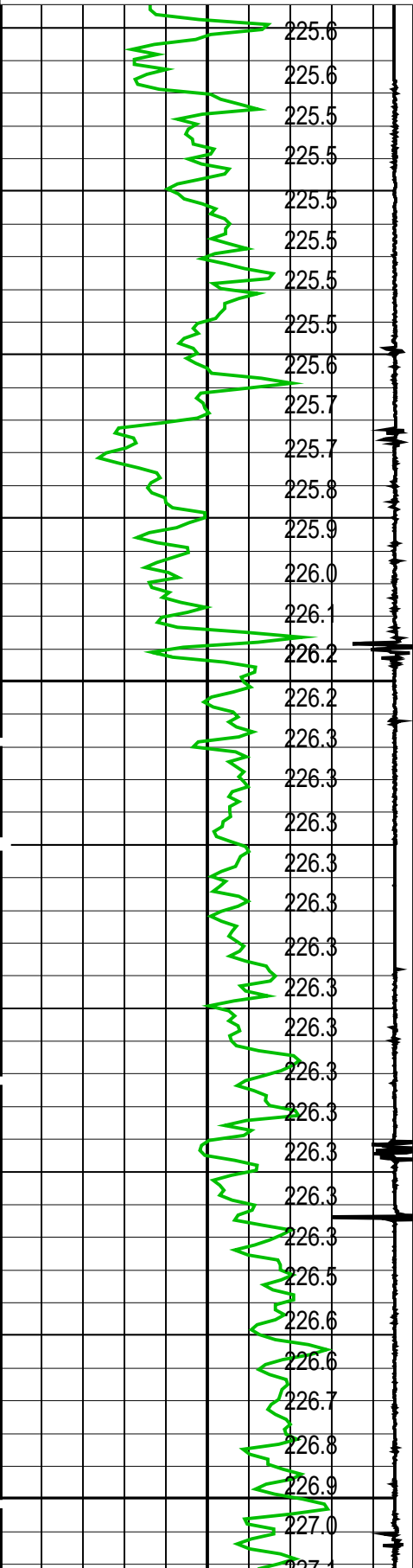
2500

0

250

0

3000

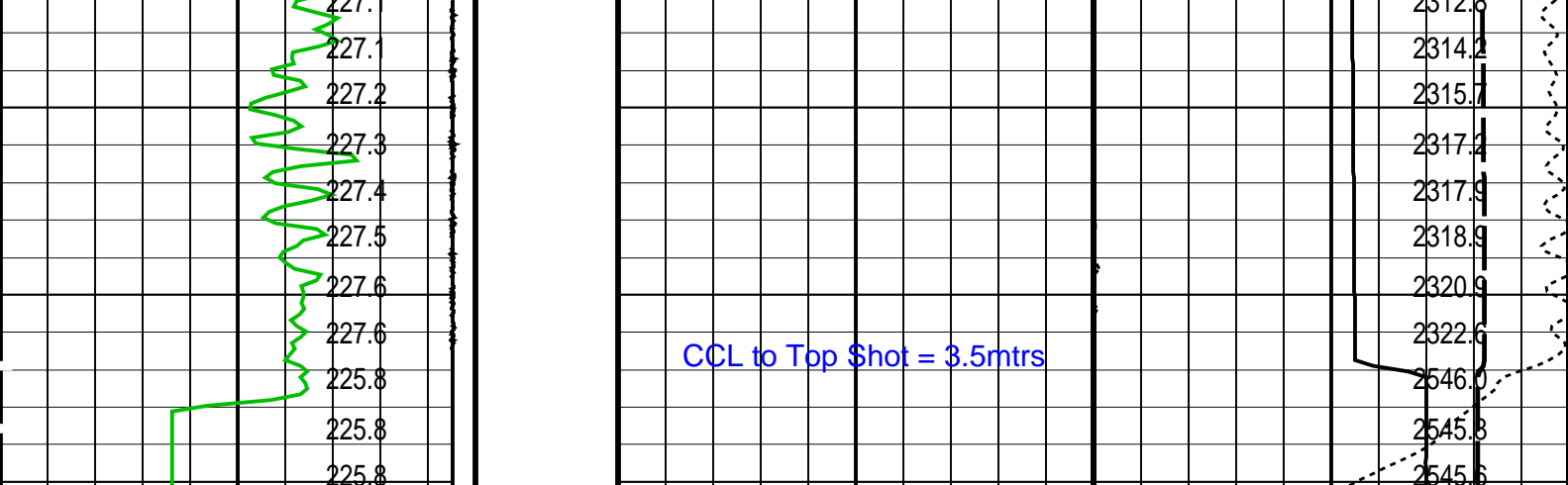


3000

2.635" No Go Nipple
Tubing Shoe

3025

Tool Stuck



Casing Collar Locator (CCL)		Strain Gauge Pressure (SGP)	
-19	(----) 1	0	(PSIA) 3000
Gamma Ray (GR)		Temperature (TEMP_MWPT)	
0	(GAPI) 150	0	(DEGF) 250
CCL From CCL to T1		Tension (TENS)	
		0	(LBF) 2500
Temperature (TEMP_MWPT) (DEGF)		Pressure (SGP) (PSIA)	

PIP SUMMARY

Time Mark Every 60 S

Parameters

DLIS Name	Description	Value
MWPT-CA: MEASUREMENT WHILE PERFORATING TOOL		
DEVI_FL_CORR	Deviation Angle for Flow Line Correction	0 DEG
FLD	Flow Line Density	1 G/C3
MWPT_NULL_SOURCE	MWPT NULL Temperature Source	TEMS
MWPT_NULL_TEMP	MWPT NULL Temperature	0.0 DEGC

Format: MWP Vertical Scale: 1:200 Graphics File Created: 16-Feb-2007 08:06

OP System Version: 14C0-302

MCM

MWP_GUN	SRC-3220-WPP-AAP\$	MWPT-CA	SRC-3220-WPP-AAP\$
MWGT-AA	SRC-3220-WPP-AAP\$		

Output DLIS Files

DEFAULT PERFO_013LUP FN:12 PRODUCER 16-Feb-2007 08:06

Schlumberger

Gamma Ray – CCL
Correlation Pass

MAXIS Field Log

Company: Esso Australia Pty Ltd.

Well: A-19a

Output DLIS Files

DEFAULT PERFO_013LUP FN:11 PRODUCER 16-Feb-2007 08:02 3032.8 M 3010.1 M

MWPT-CA: MEASUREMENT WHILE PERFORATING TOOL

DEVI_FL_CORR	Deviation Angle for Flow Line Correction	0	DEG
FLD	Flow Line Density	1	G/C3
MWPT_NULL_SOURCE	MWPT NULL Temperature Source	TEMS	
MWPT_NULL_TEMP	MWPT NULL Temperature	0.0	DEGC
Format: MWP Vertical Scale: 1:200		Graphics File Created: 16-Feb-2007 08:02	
OP System Version: 14C0-302			
MCM			
MWP_GUN	SRC-3220-WPP-AAP5	MWPT-CA	SRC-3220-WPP-AAP5
MWGT-AA	SRC-3220-WPP-AAP5		
Output DLIS Files			
DEFAULT	PERFO_012LUP	FN:11 PRODUCER	16-Feb-2007 08:02
Company: Esso Australia Pty Ltd.			
Schlumberger			
Well:	A-19a		
Field:	Flounder		
Rig :	Prod4 / Crane		
Country:	Australia		
2 1/2" Pendulum Phased			
Powerjet Perforation			
Record			