

Company: Esso Australia Pty. Ltd.

Well: BMA A-25

Field: Bream

Rig: Prod 2 / ISS Rig 22 Country: Australia

HPI Plug
Setting Record
26-Jan-2007

Prod 2 / ISS Rig 22
Bream
Bass Strait
BMA A-25
Esso Australia Pty. Ltd.

Rig:		Prod 2 / ISS Rig		
Field:	Bream			
Location:	Bass Strait			
Well:	BMA A-25			
Company:	Esso Australia Pty			
Logging Date	LOCATION			
	State: Victoria	Bass Strait	Elev.: K.B. 33.5 m	
		Gippsland	G.L. -59 m	
		Basin	D.F. 33.2 m	
	Permanent Datum:	Mean Sea Level	Elev.: 0 m	
	Log Measured From:	Drill Floor	33.2 m above Perm. Datum	
	Drilling Measured From:	Kelly Bush		
Run Number	26-Jan-2007	Max. Well Deviation 70 deg	Longitude 147°46'15"E	Latitude 38°30'40"S
Depth Driller	1			
Schlumberger Depth	4065 m			
Bottom Log Interval	3997 m			
Top Log Interval	3982 m			
Casing Fluid Type	3560 m			
	Inhibited Seawater			
Salinity				
Density	8.6 lbm/gal			
Fluid Level				
BIT/CASING/TUBING STRING				
Bit Size	8.500 in			
From	3795 m			
To	4065 m			
Casing/Tubing Size	7.000 in			
Weight	29 lbm/ft			
Grade	L80			
From	3645 m			
To	4064 m			
Maximum Recorded Temperatures				
Logger On Bottom	26-Jan-2007		19:45	
Unit Number	3827	AUSL		
Recorded By	A.Sword/C.Rowand/B.Donahoe			
Witnessed By	Mr B. Woodward / Mr M. Wilson			

PVT DATA				Run 1	Run 2	Run 3
Oil Density						
Water Salinity						
Gas Gravity						
Bo						
Bw						
1/Bg						
Bubble Point Pressure						
Bubble Point Temperature						
Solution GOR						
Maximum Deviation	70 deg					
CEMENTING DATA						
Primary/Squeeze	Primary					
Casing String No						
Lead Cement Type						
Volume						
Density						
Water Loss						
Additives						
Tail Cement Type						
Volume						
Density						
Water Loss						
Additives						
Expected Cement Top						
Logging Date						
Run Number						
Depth Driller						
Schlumberger Depth						
Bottom Log Interval						
Top Log Interval						
Casing Fluid Type						
Salinity						
Density						
Fluid Level						
BIT/CASING/TUBING STRING						
Bit Size						
From						
To						
Casing/Tubing Size						
Weight						
Grade						
From						
To						
Maximum Recorded Temperatures						
Logger On Bottom						
Unit Number						
Recorded By						
Witnessed By						

DEPTH SUMMARY LISTING

Date Created: 1-FEB-2007 6:16:55

Depth System Equipment

Depth Measuring Device		Tension Device		Logging Cable	
Type:	IDW-E	Type:	CMTD-B/A	Type:	2-32ZT
Serial Number:	727	Serial Number:	1711	Serial Number:	24031
Calibration Date:	23-Mar-2006	Calibration Date:	01-Dec-2006	Length:	5690.01 M
Calibrator Serial Number:	9	Calibrator Serial Number:	1173		
Calibration Cable Type:	2-32ZT	Calibration Gain:	1.01	Conveyance Method:	Wireline
Wheel Correction 1:	-1	Calibration Offset:	695.00	Rig Type:	Offshore_Fixed
Wheel Correction 2:	-2				

Depth Control Parameters

Log Sequence:	Subsequent Log In the Well
Reference Log Name:	Esso Solar Composite Log
Reference Log Run Number:	
Reference Log Date:	11-Jan-2005

Depth Control Remarks

1. Log correlated to Esso Solar Composite Log dated 11-Jan-2007
2.
3.
4.
5.
6.

DISCLAIMER

THE USE OF AND RELIANCE UPON THIS RECORDED-DATA BY THE HEREIN NAMED COMPANY (AND ANY OF ITS AFFILIATES, PARTNERS, REPRESENTATIVES, AGENTS, CONSULTANTS AND EMPLOYEES) IS SUBJECT TO THE TERMS AND CONDITIONS AGREED UPON BETWEEN SCHLUMBERGER AND THE COMPANY, INCLUDING: (a) RESTRICTIONS ON USE OF THE RECORDED-DATA; (b) DISCLAIMERS AND WAIVERS OF WARRANTIES AND REPRESENTATIONS REGARDING COMPANY'S USE OF AND RELIANCE UPON THE RECORDED-DATA; AND (c) CUSTOMER'S FULL AND SOLE RESPONSIBILITY FOR ANY INFERENCE DRAWN OR DECISION MADE IN CONNECTION WITH THE USE OF THIS RECORDED-DATA.

OTHER SERVICES1	OTHER SERVICES2
OS1: GR-CCL / Dummy HPI	OS1:
OS2:	OS2:
OS3:	OS3:
OS4:	OS4:
OS5:	OS5:
REMARKS: RUN NUMBER 1	REMARKS: RUN NUMBER 2

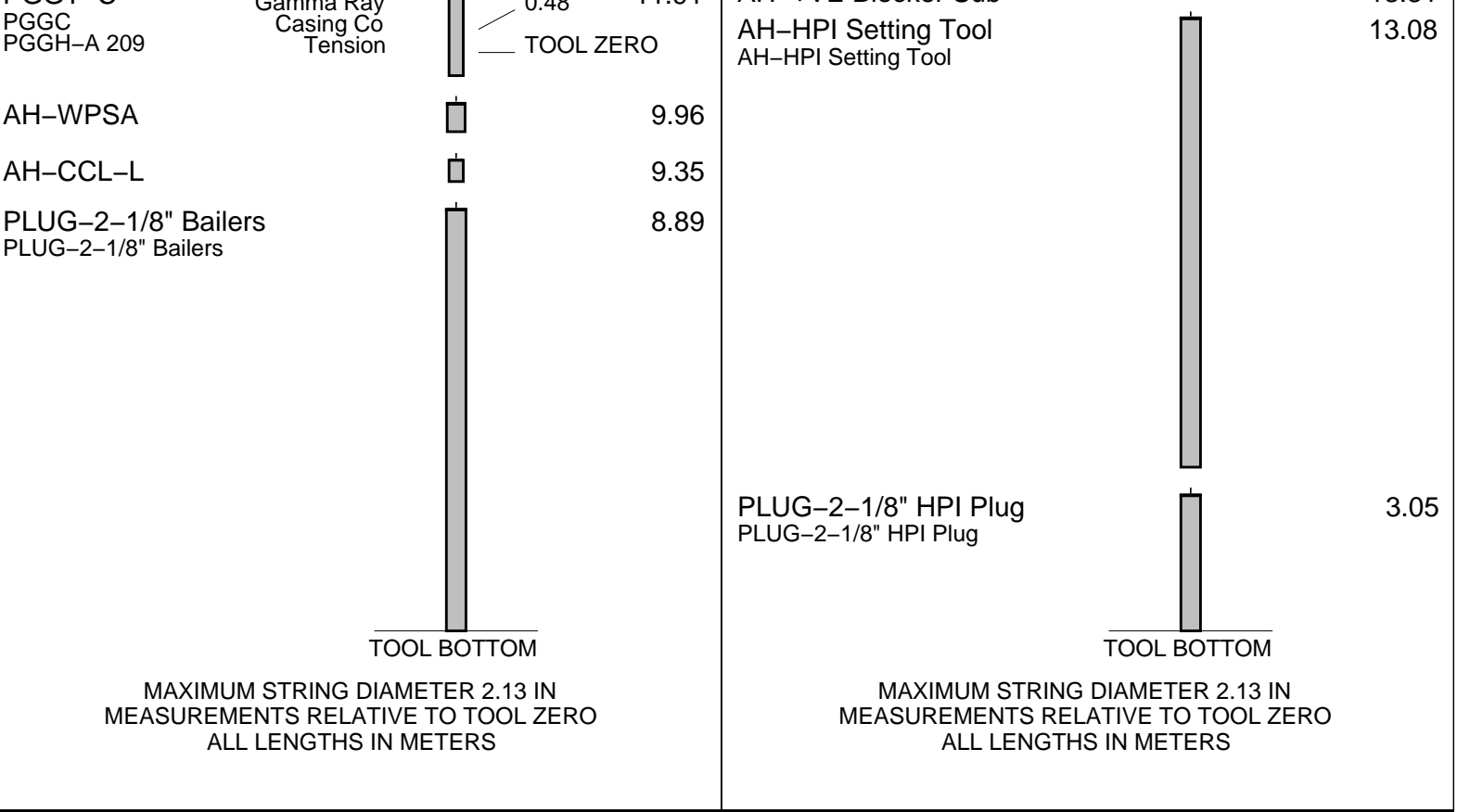
Log correlated to ESSO Solar Composite Log dated 11-Jan-2005

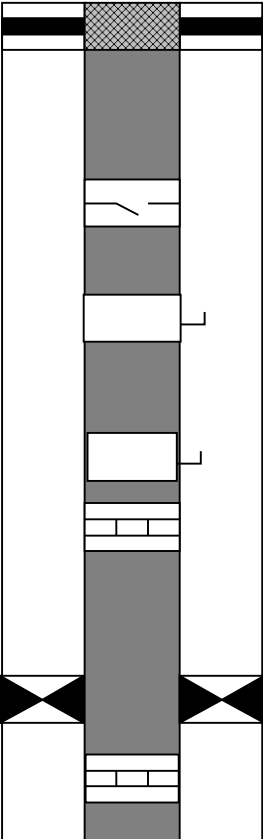
Objective: to set a 7" HPI plug as low as possible.

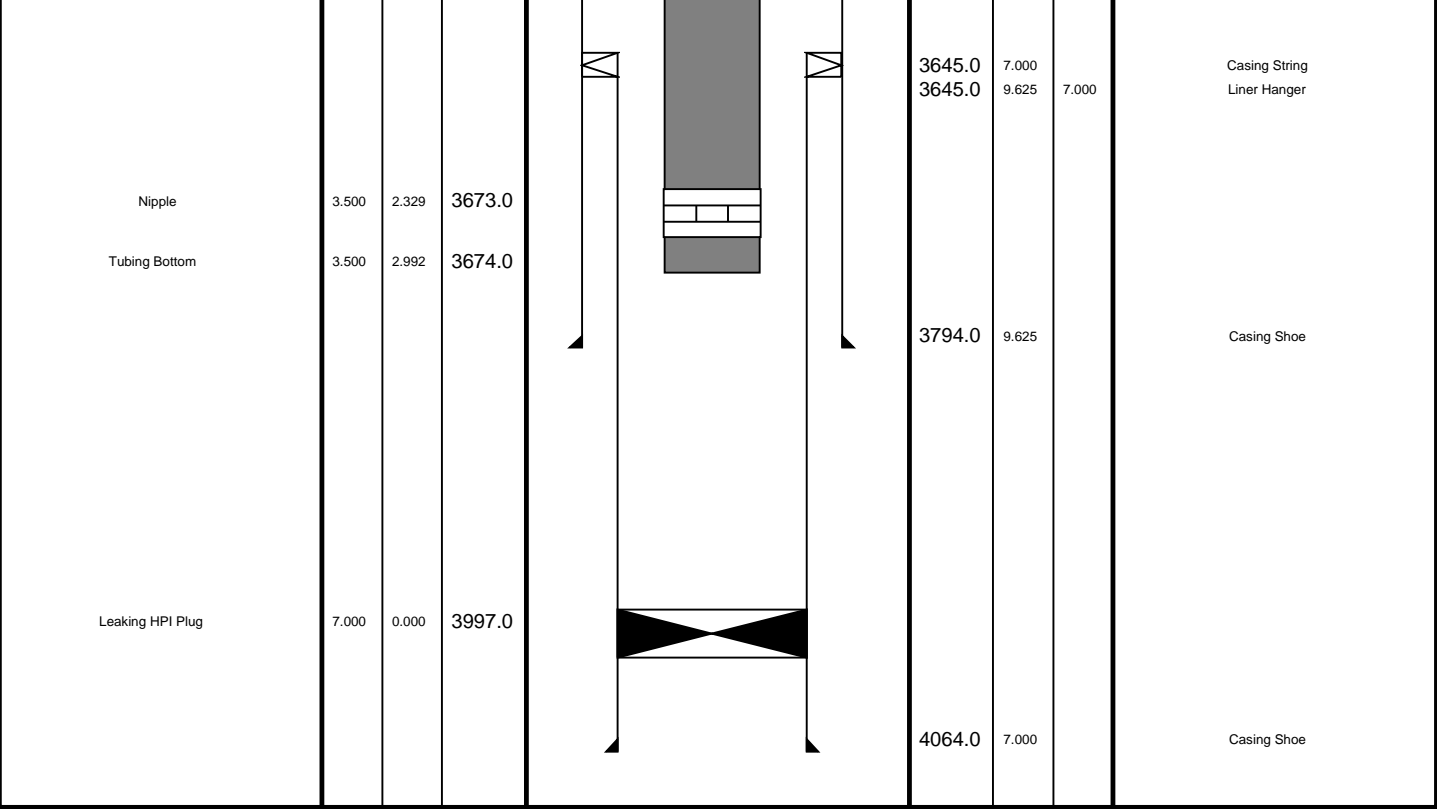
Drift run was made with 2-1/8" Bailers and a GR-CCL. Tagged HUD @ 3997.2 M.

HPI plug set (top anchor) @ 3994.2 M. CCL to Top Anchor = 10.5 M

Inhibited Seawater was pumped by the rig at 1 bbl/min during the job to ensure



Production String	(in)		(ft)	Well Schematic	(ft)	(in)		Casing String
	OD	ID	MD		MD	OD	ID	
Tubing Hanger Tubing, 9.2 lbm/ft	9.625	3.500	11.0		9.625		Casing String	
	3.500	2.992						
SSSV	3.500	2.750	458.0					
Side Pocket Mandrel	3.500	2.770	590.0					
Side Pocket Mandrel	3.500	2.770	1137.0					
Nipple	3.500	2.750	1187.0					
Packer	9.625	3.500	3604.0					
Nipple	3.500	2.635	3625.0					



Schlumberger

HPI Setting pass

MAXIS Field Log

PERFO2 Operational Summary Listing

Device	Status	Req Depth (M)	Obs Depth (M)	Time Used
HPI PLUG	Used	3994.2	3994.2	Sat Jan 27 12:40:30 2007

Output DLIS Files

OP System Version: 14C0-302

MCM

SHM_GUN

14C0-302

CCL-L

14C0-302

PIP SUMMARY

└─ Casing Collars

Time Mark Every 60 S

Raw Casing Collar Locator (RCCL)

-3 (----) 17

Casing Collar Locator (CCL)

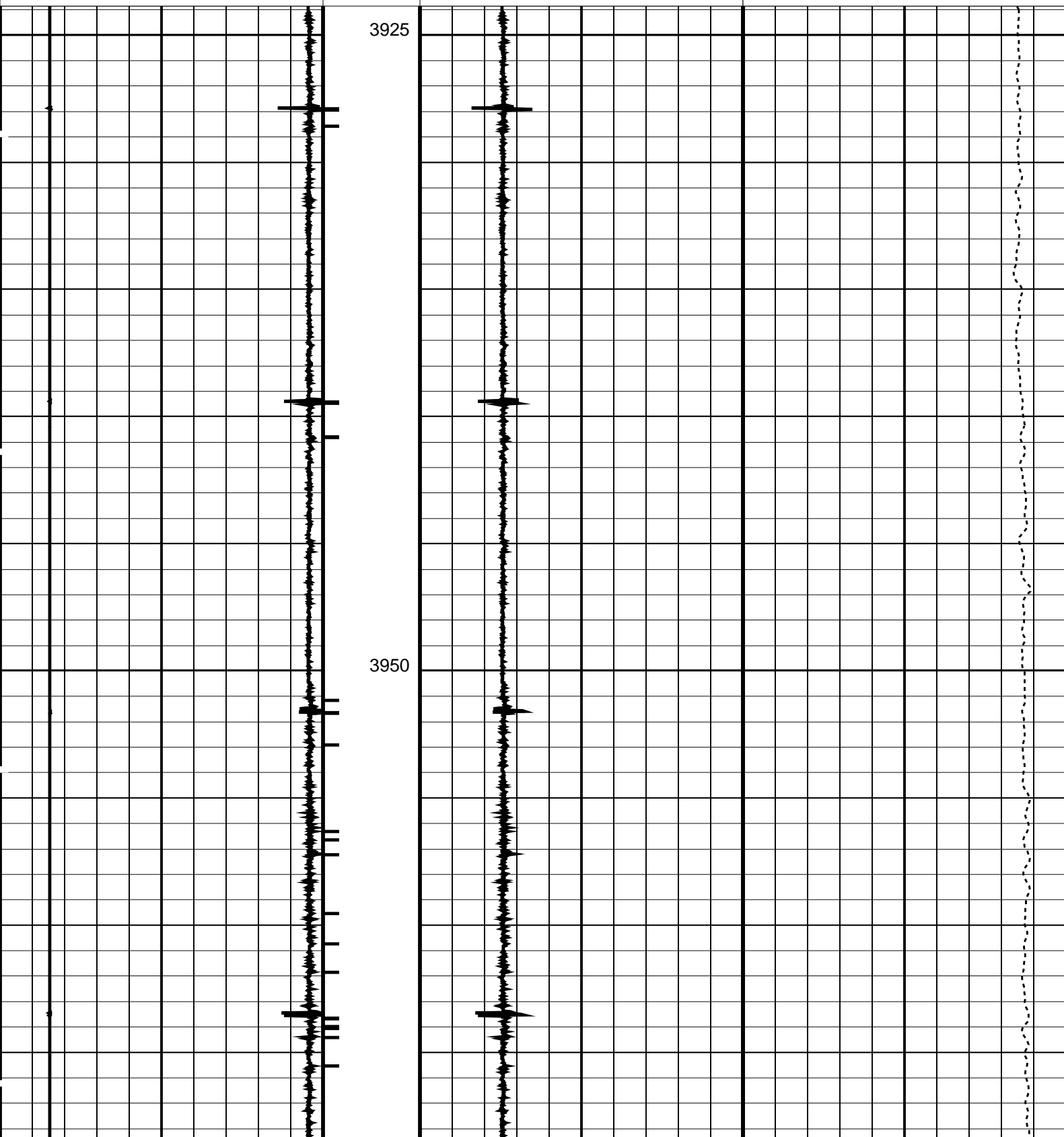
-19 (----) 1

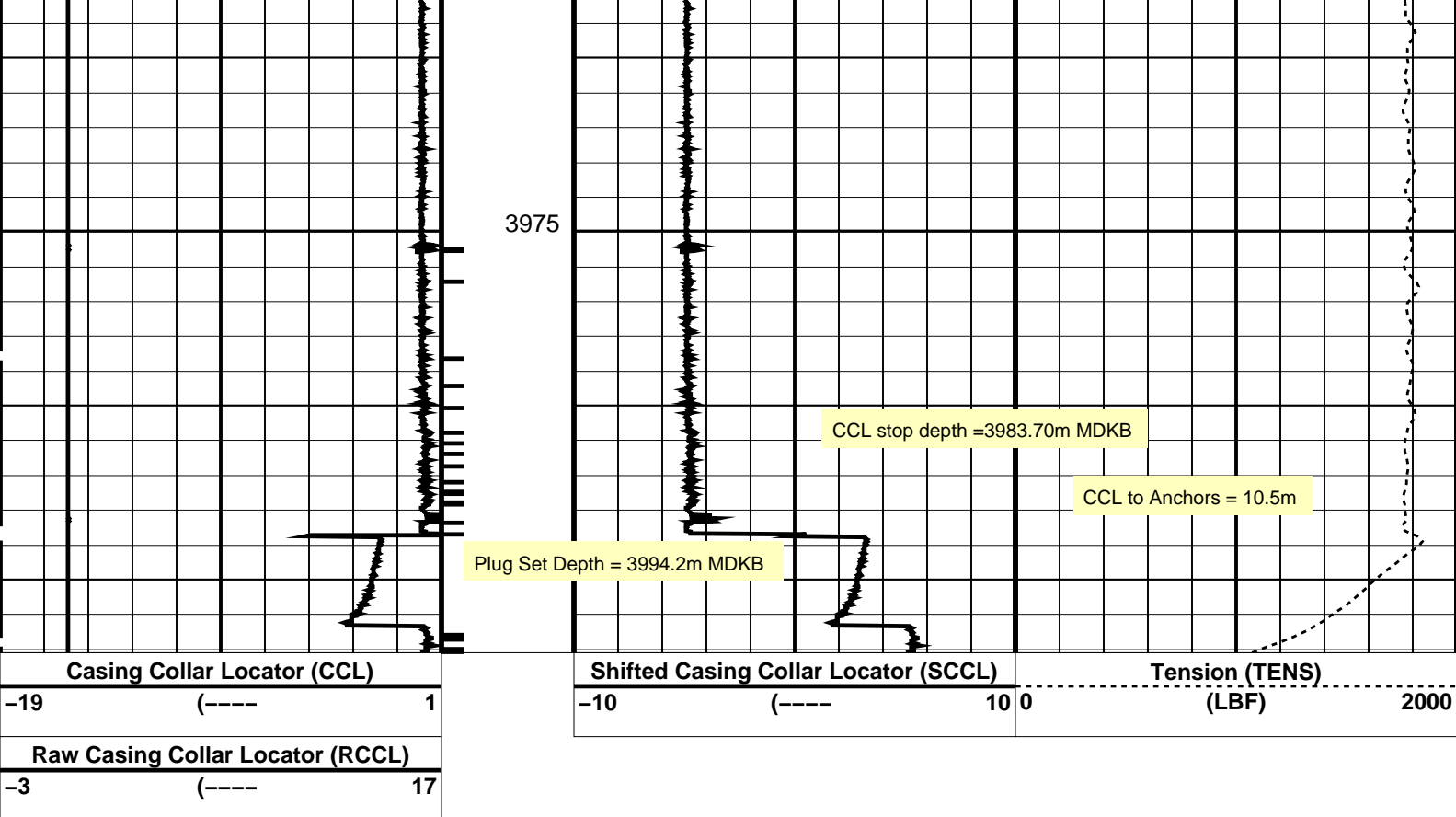
Shifted Casing Collar Locator (SCCL)

-10 (----) 10 0

Tension (TENS)

(LBF) 2000





PIP SUMMARY

Time Mark Every 60 S

Casing Collars

Parameters		
DLIS Name	Description	Value
CCLD	CCL-L: Casing Collar Locator	12 IN
CCLT	CCL reset delay	0.3 V
	CCL Detection Level	

Format: CCLLog Vertical Scale: 1:200 Graphics File Created: 27-Jan-2007 12:34

OP System Version: 14C0-302			
MCM			
SHM_GUN	14C0-302	CCL-L	14C0-302

Output DLIS Files			
DEFAULT	PERFO_023LUP	FN:30	PRODUCER 27-Jan-2007 12:34

Correlation pass

MAXIS Field Log

OP System Version: 14C0-302

MCM

SHM_GUN

14C0-302

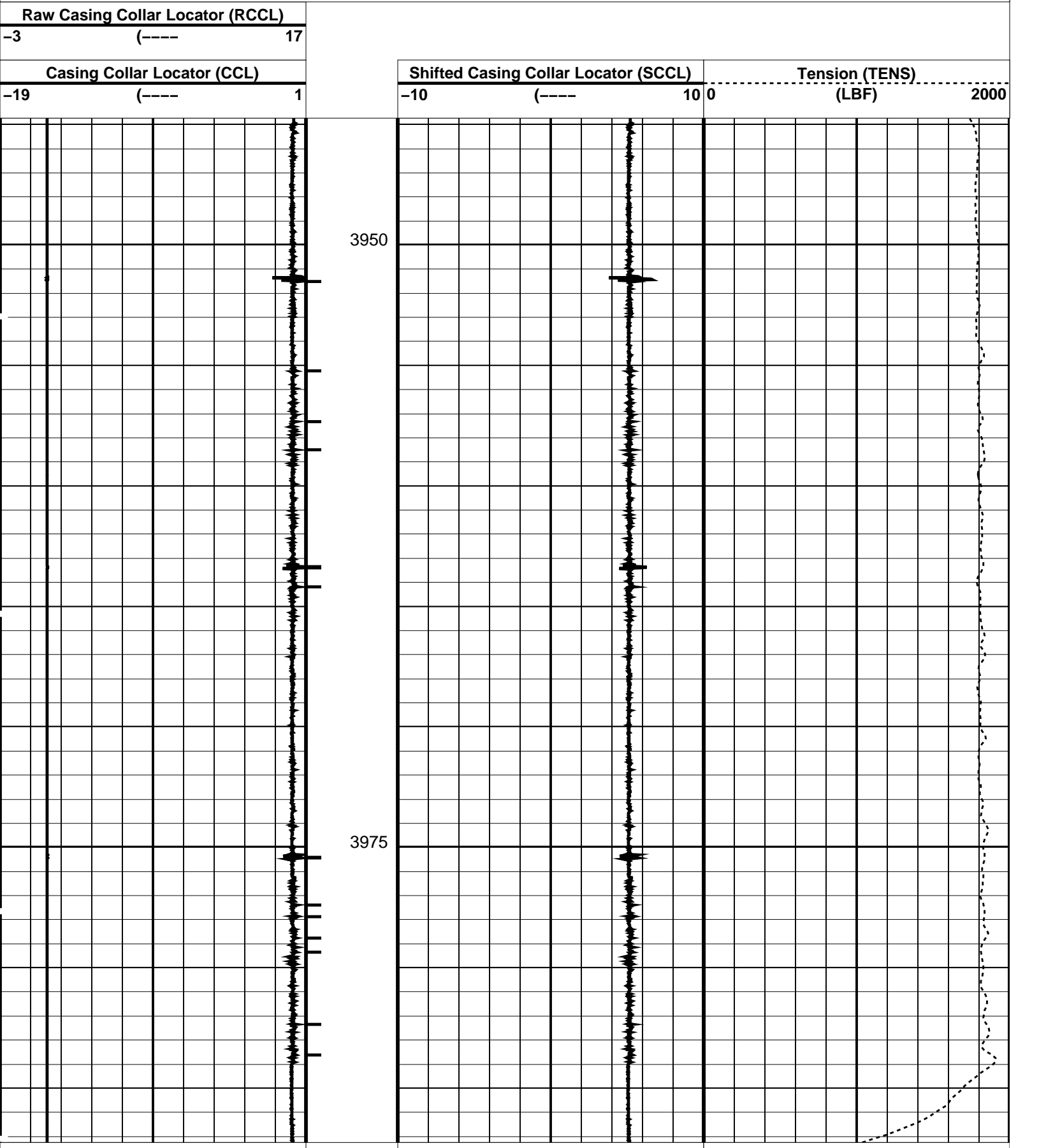
CCL-L

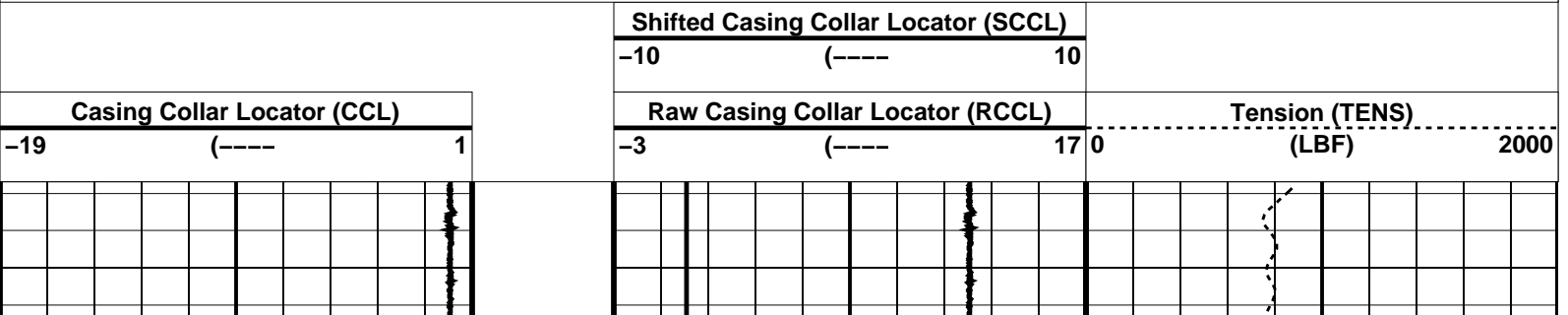
14C0-302

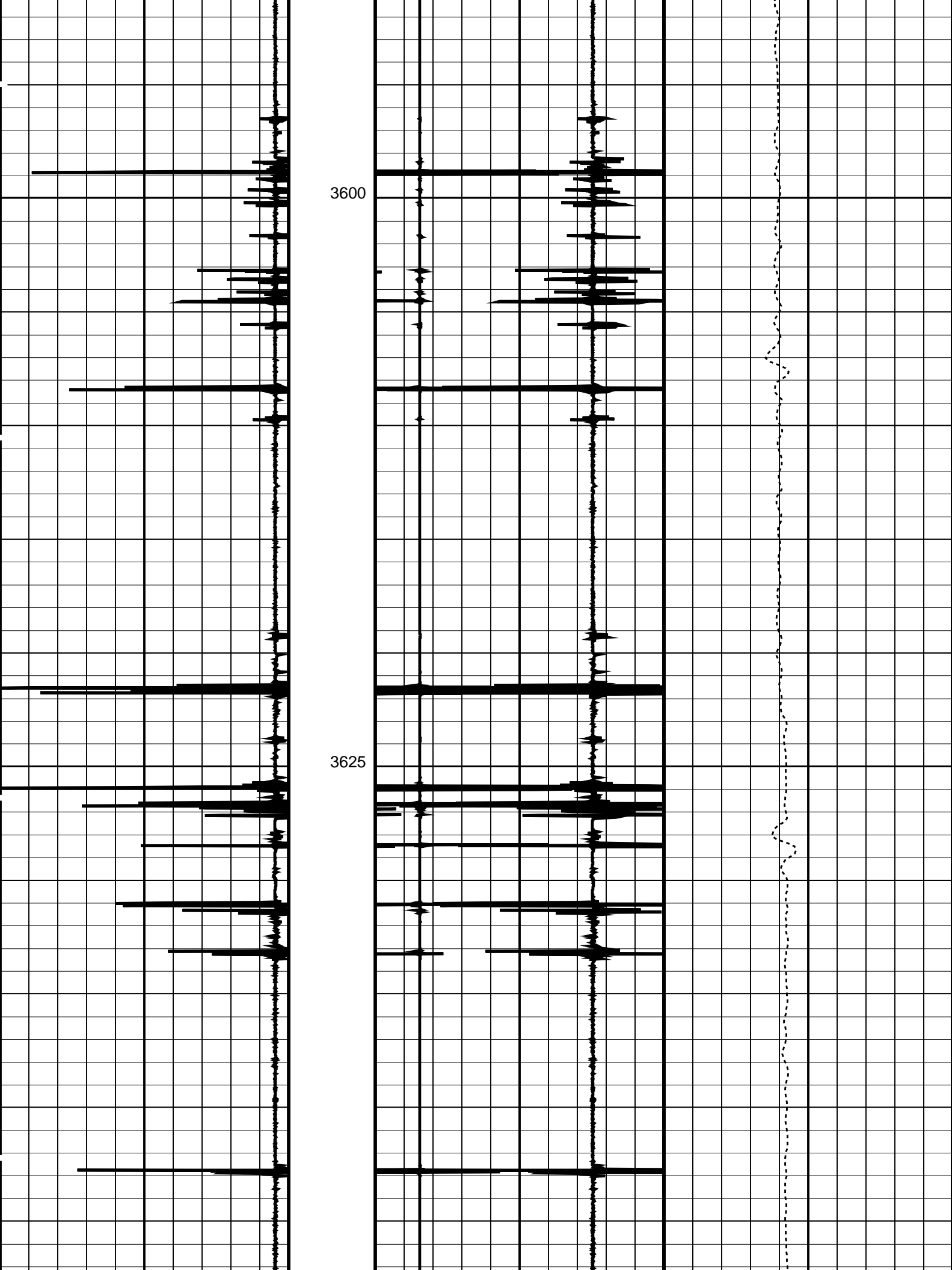
PIP SUMMARY

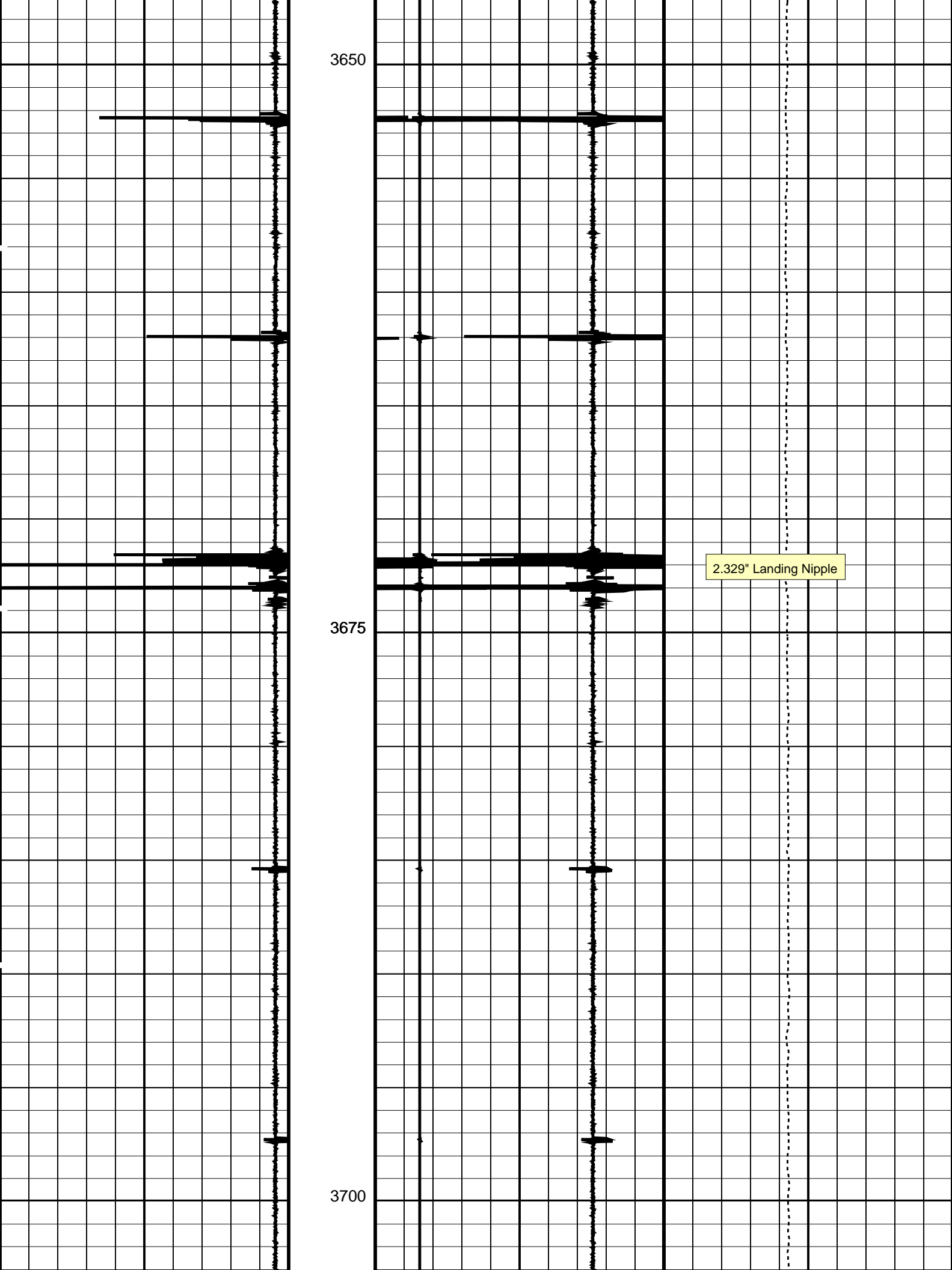
└─ Casing Collars

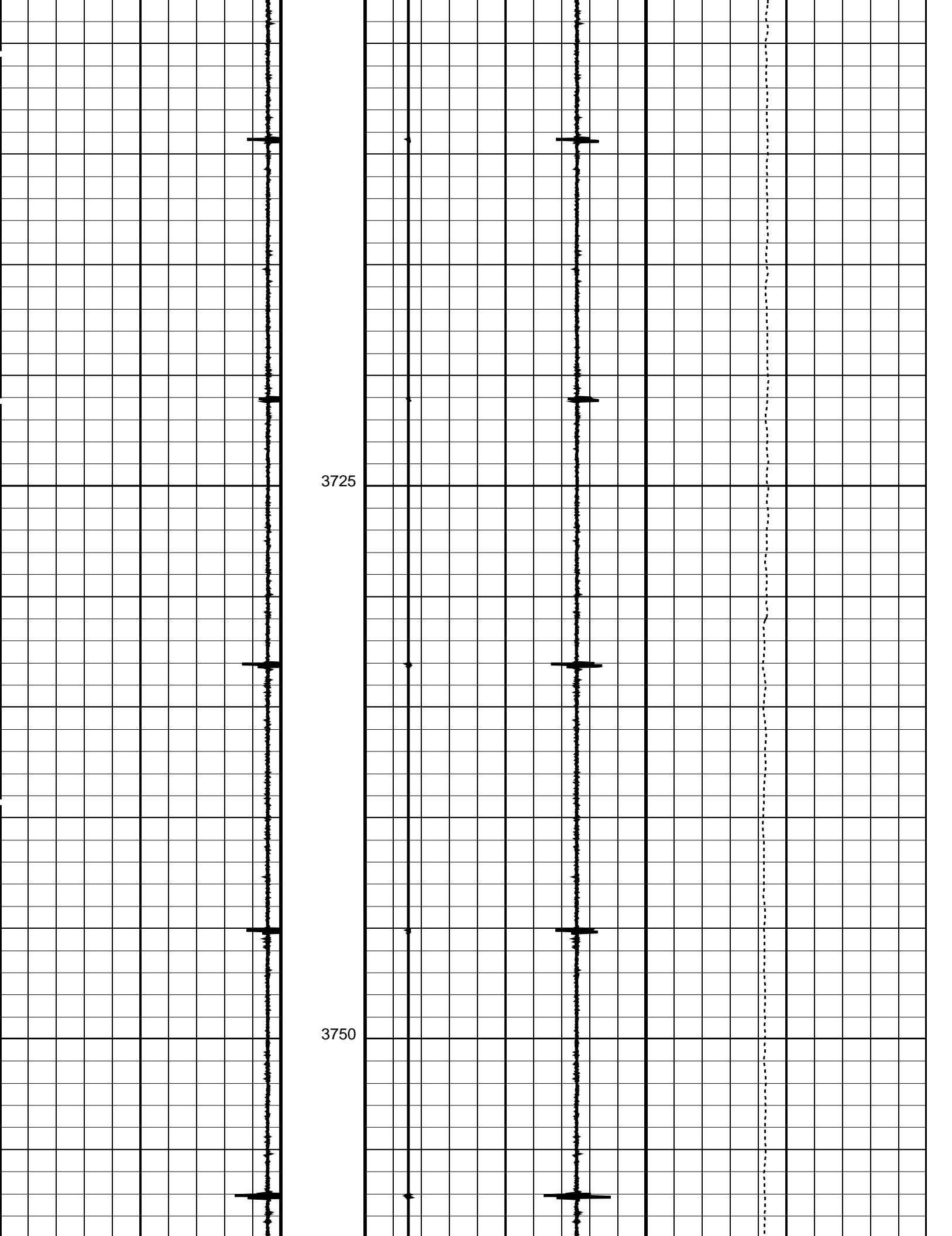
Time Mark Every 60 S

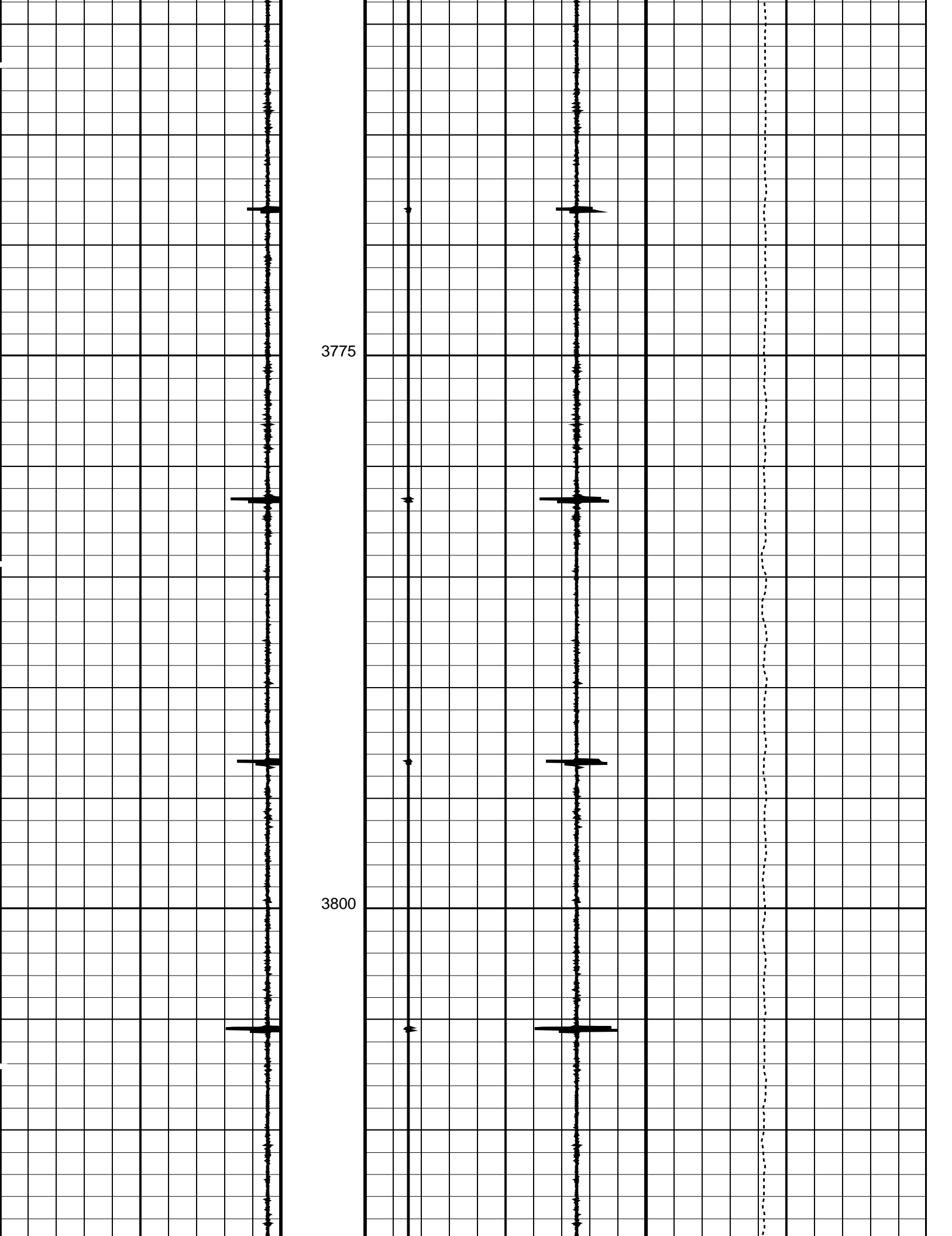


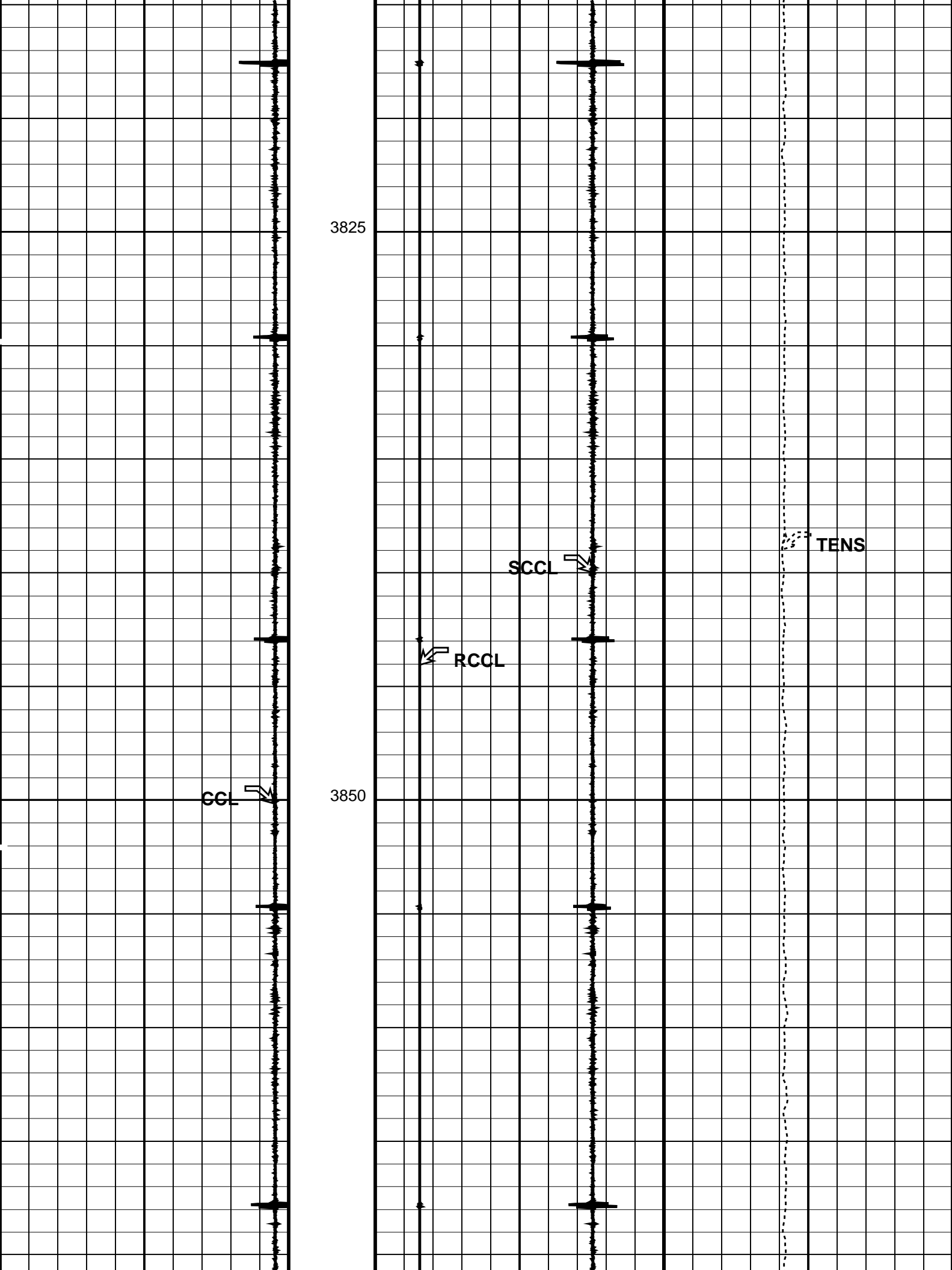


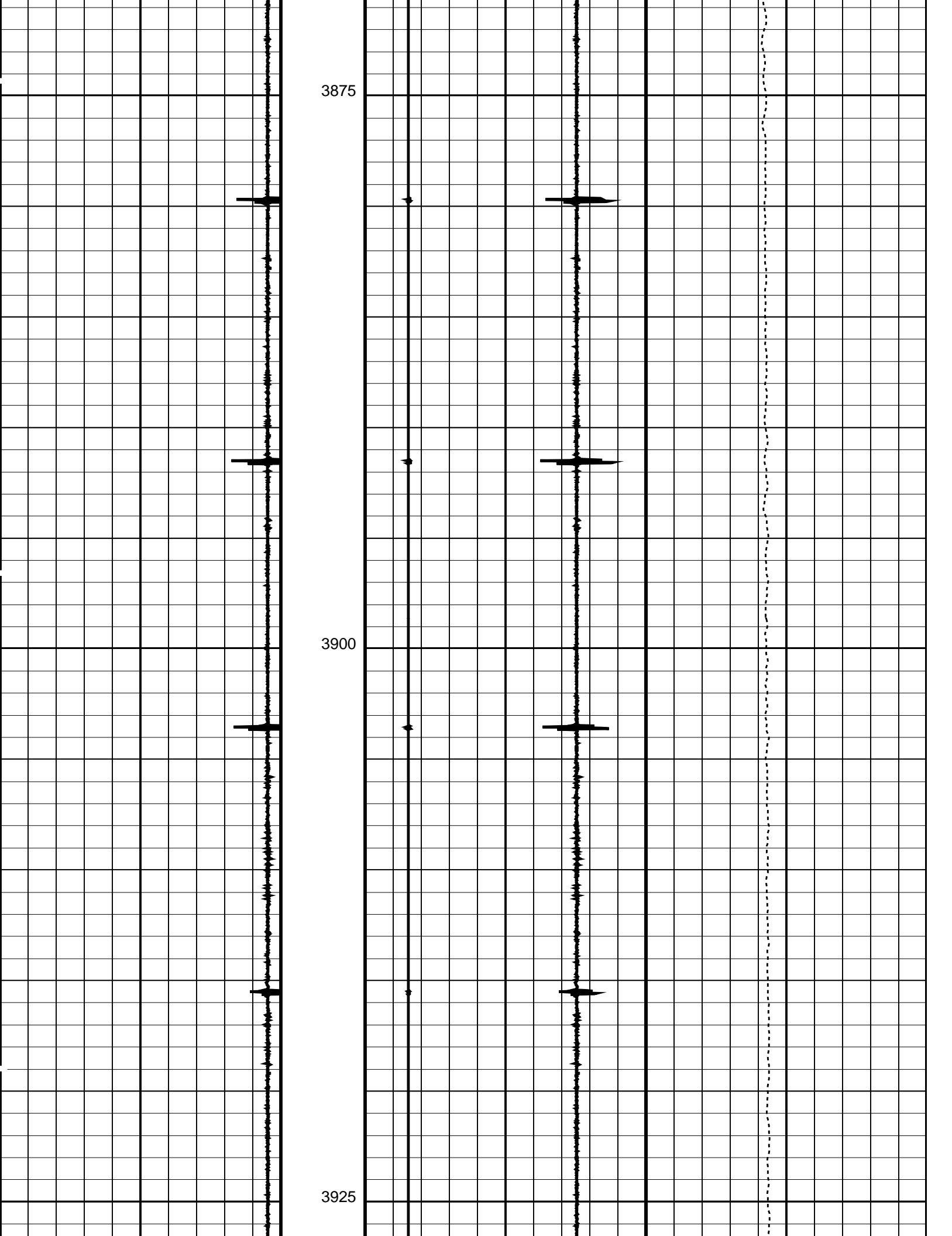


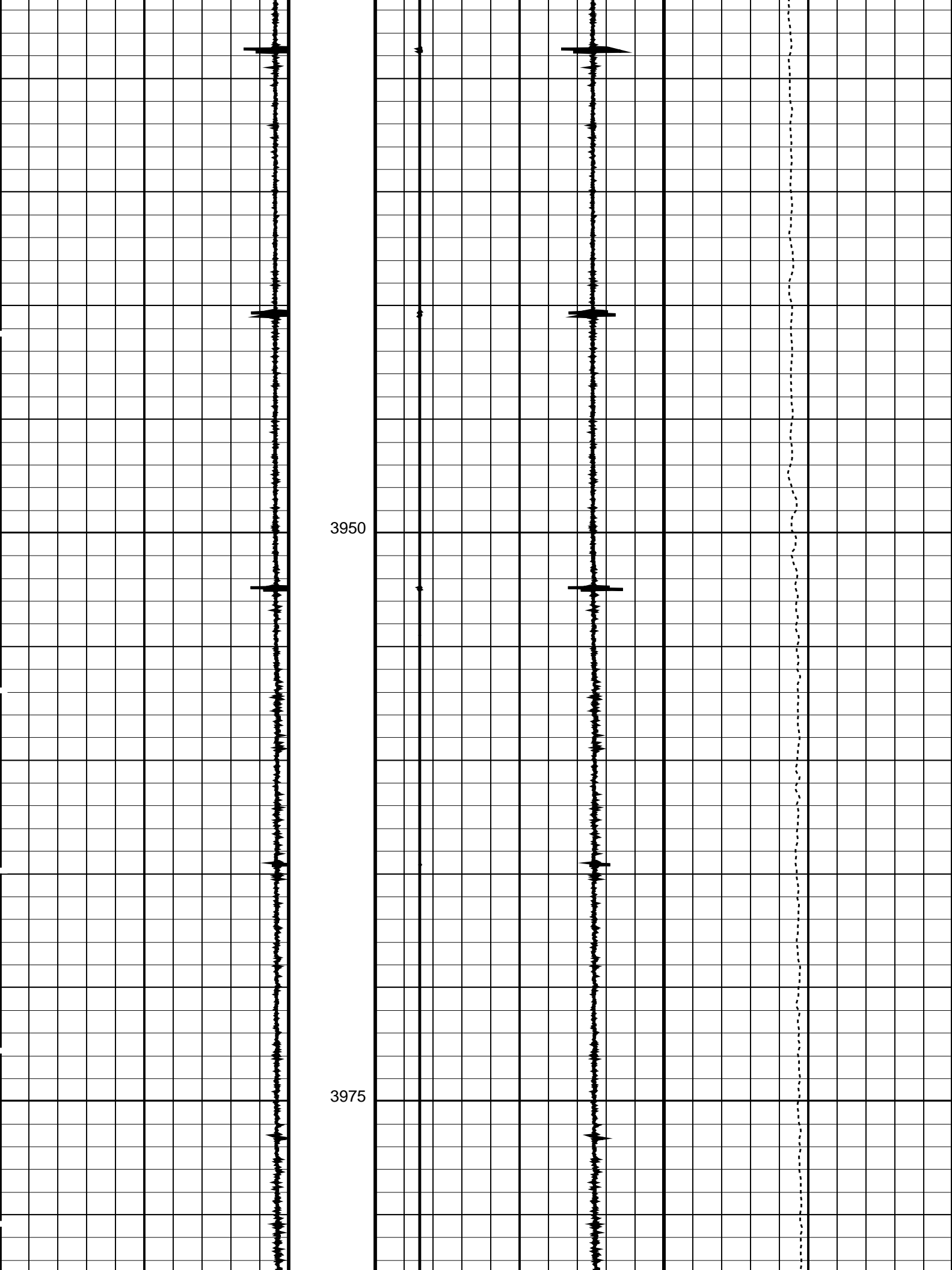


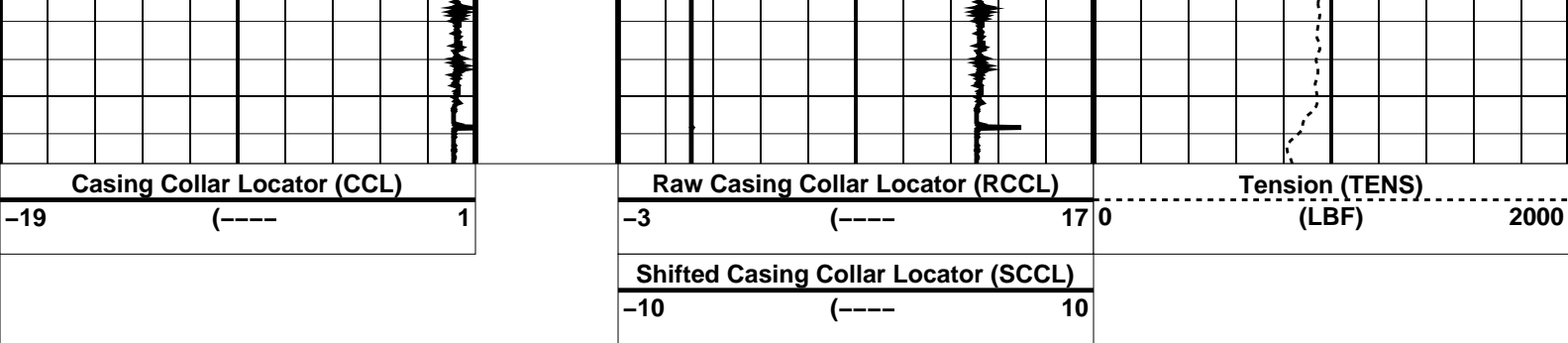













PIP SUMMARY

Time Mark Every 60 S

Parameters		
DLIS Name	Description	Value
DO	System and Miscellaneous	
PP	Depth Offset for Playback	2.5 M
	Playback Processing	NORMAL
Format: CCLLog Vertical Scale: 1:200		Graphics File Created: 01-Feb-2007 05:21

OP System Version: 14C0-302			
MCM			
SHM_GUN	14C0-302	PGGT-CC	14C0-302

Input DLIS Files					
DEFAULT	Flip_PERFO_018LUP	PRODUCER	01-Feb-2007 05:20	3984.3 M	3584.8 M
Output DLIS Files					
DEFAULT	PERFO_018PUP	FN:37	PRODUCER	01-Feb-2007 05:21	



GR-CCL

Main Pass (Up Log)

MAXIS Field Log

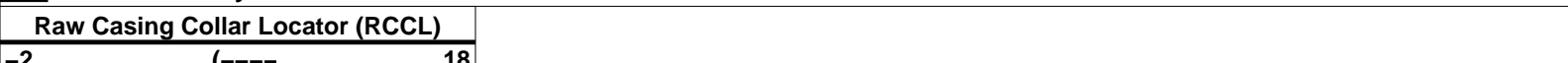
Company: Esso Australia Pty. Ltd. Well: BMA A-25

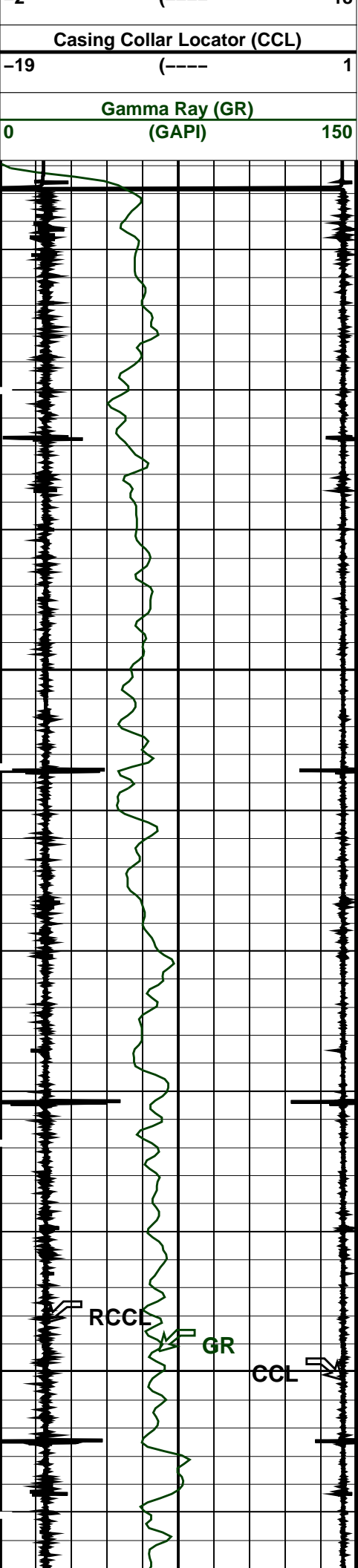
Input DLIS Files					
DEFAULT	PERFO_013LUP	FN:12	PRODUCER	26-Jan-2007 19:48	3994.9 M 3856.6 M
Output DLIS Files					
DEFAULT	PERFO_013PUP	FN:20	PRODUCER	26-Jan-2007 22:16	3994.6 M 3856.8 M

OP System Version: 14C0-302			
MCM			
SHM_GUN	14C0-302	PGGT-CC	14C0-302

PIP SUMMARY

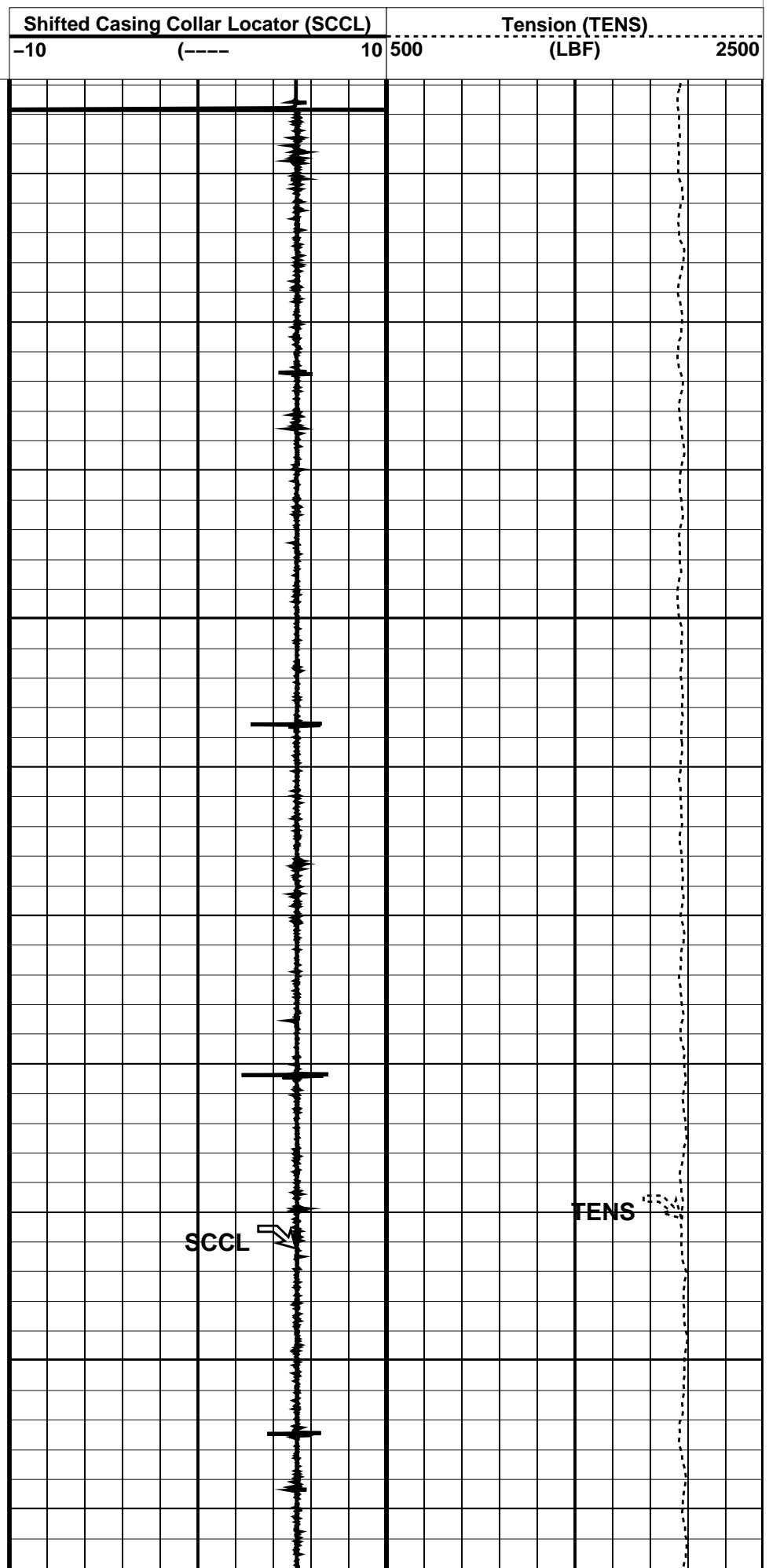
Time Mark Every 60 S

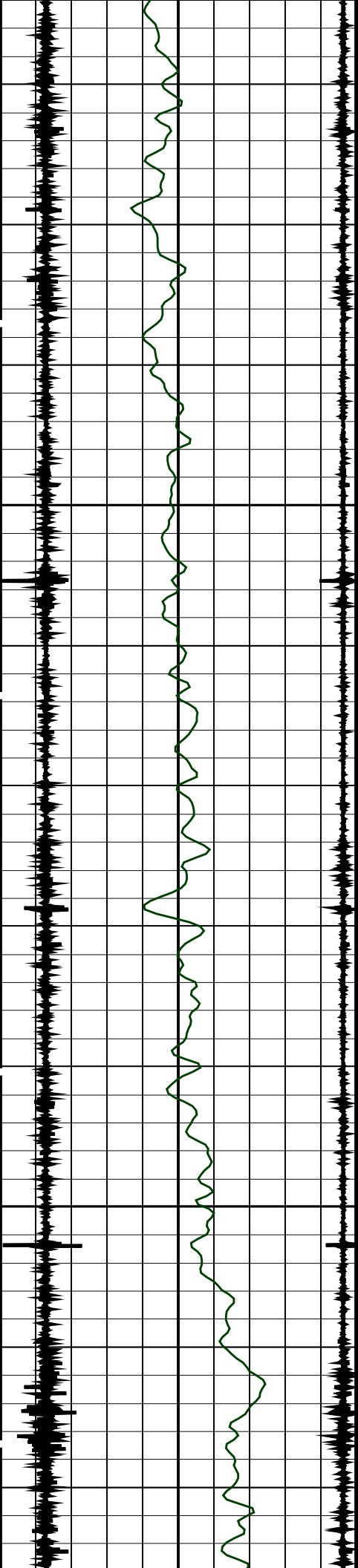




3875

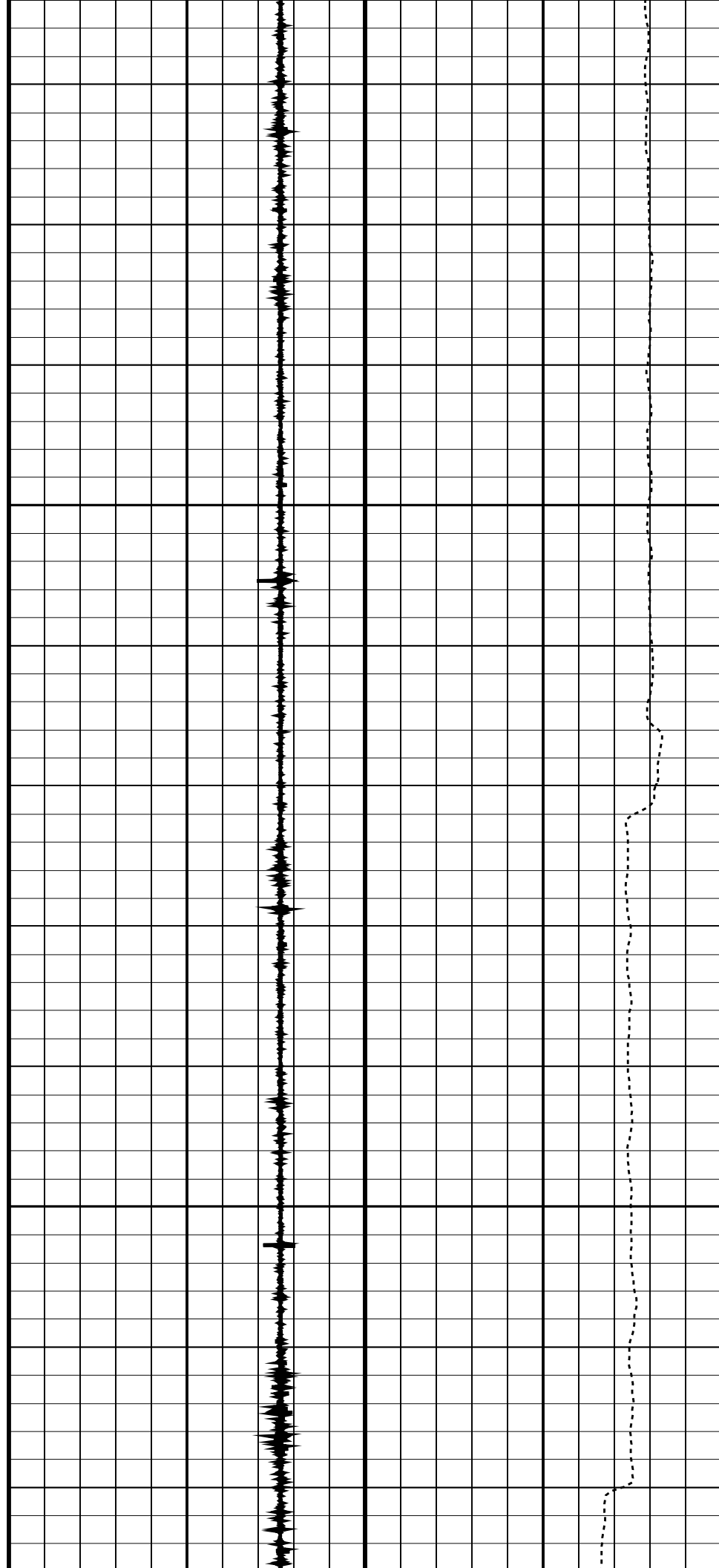
3900

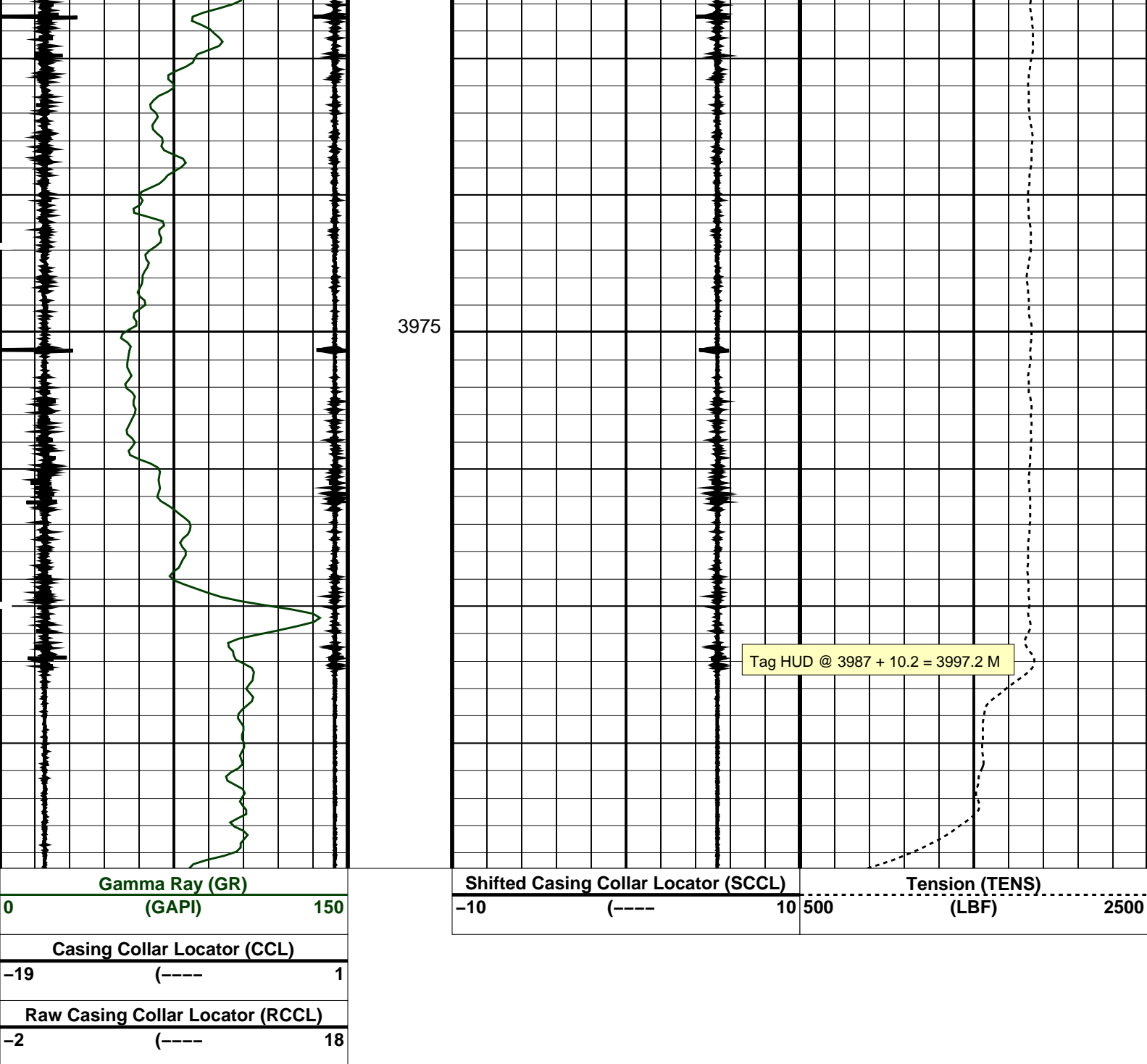




3925

3950





PIP SUMMARY

Time Mark Every 60 S

Parameters

DLIS Name	Description	Value
DO	System and Miscellaneous	
PP	Depth Offset for Playback	-0.3 M
	Playback Processing	NORMAL

Format: CORRELATION Vertical Scale: 1:200 Graphics File Created: 26-Jan-2007 22:16

OP System Version: 14C0-302
MCM

SHM_GUN 14C0-302 PGGT-CC 14C0-302

Input DLIS Files

DEFAULT PERFO_013LUP FN:12 PRODUCER 26-Jan-2007 19:48 3994.9 M 3856.6 M

Output DLIS Files

DEFAULT

PERFO_013PUP

FN:20

PRODUCER

26-Jan-2007 22:16

Schlumberger

GR-CCL
Down Log

MAXIS Field Log

Company: Esso Australia Pty. Ltd.

Well: BMA A-25

Input DLIS Files

DEFAULT

Flip_PERFO_012LUP

PRODUCER

26-Jan-2007 21:46

3995.0 M

3563.0 M

Output DLIS Files

DEFAULT

PERFO_012PUP

FN:17

PRODUCER

26-Jan-2007 21:50

3992.0 M

3560.4 M

OP System Version: 14C0-302
MCM

SHM_GUN

14C0-302

PGGT-CC

14C0-302

PIP SUMMARY

Time Mark Every 60 S

Raw Casing Collar
Locator (RCCL)

-3 (---- 17

Casing Collar Locator (CCL)

-19 (---- 1

Gamma Ray (GR)
(GAPI)

0 150

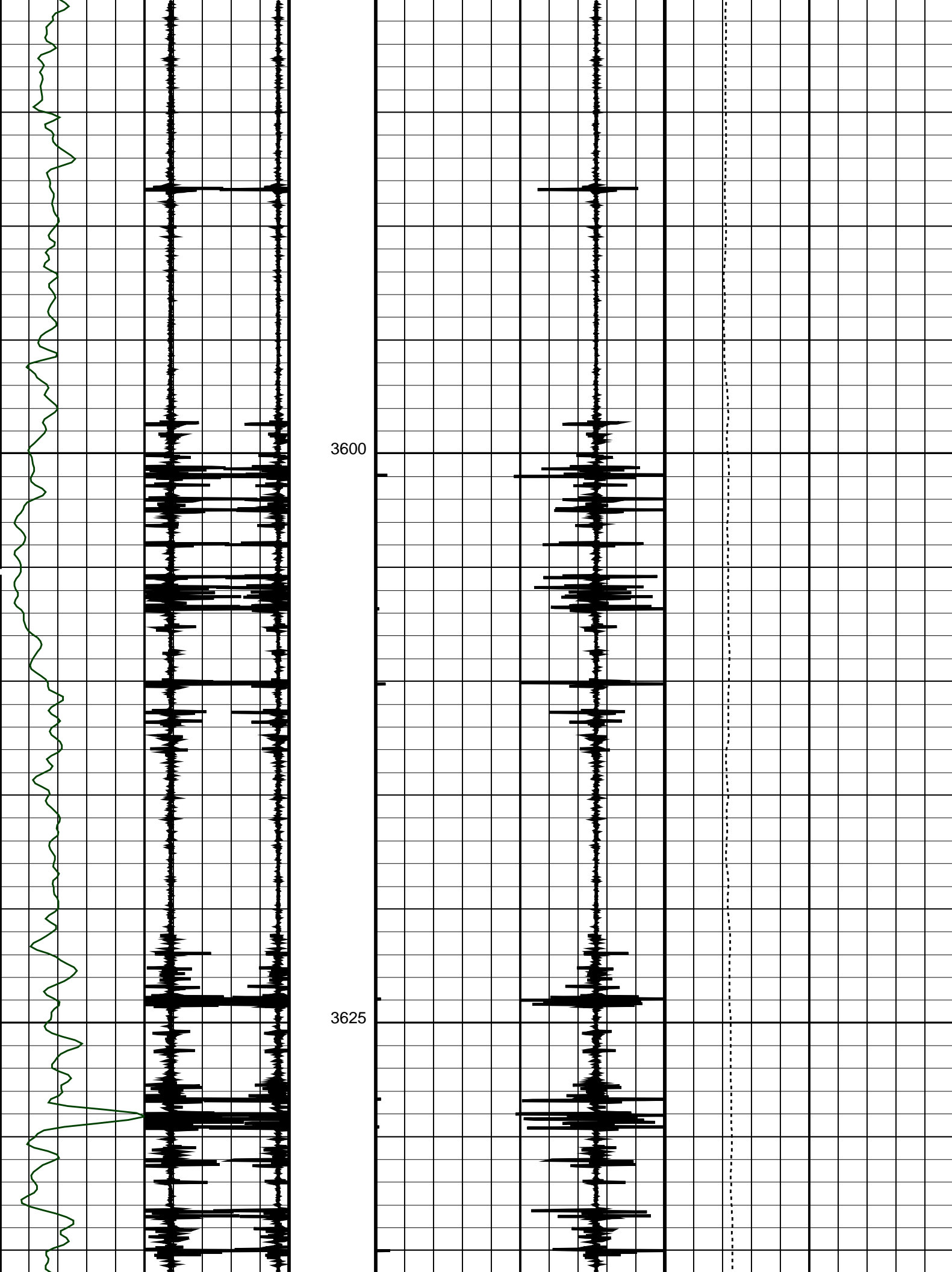
Shifted Casing Collar Locator (SCCL)

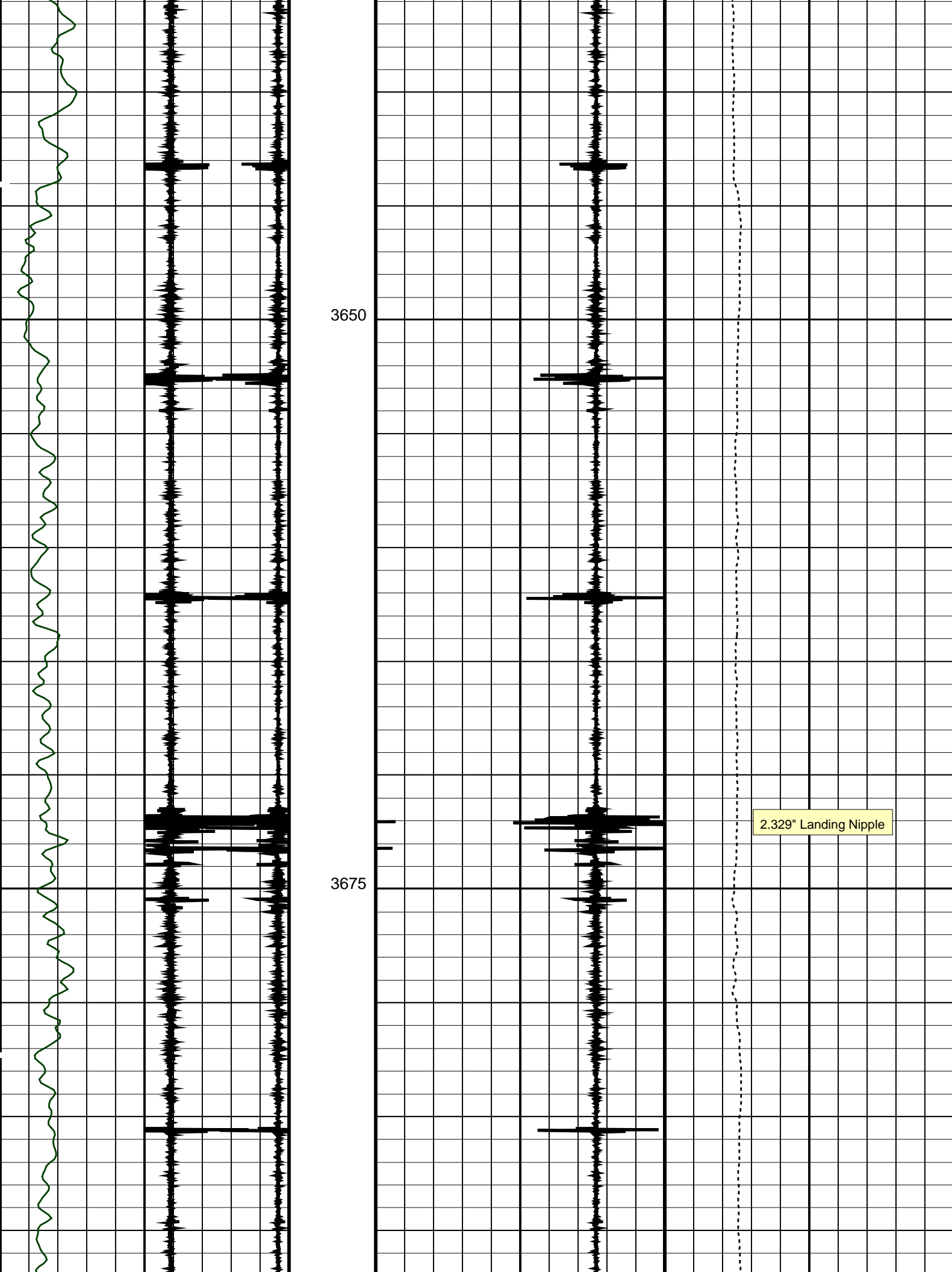
-10 (---- 10

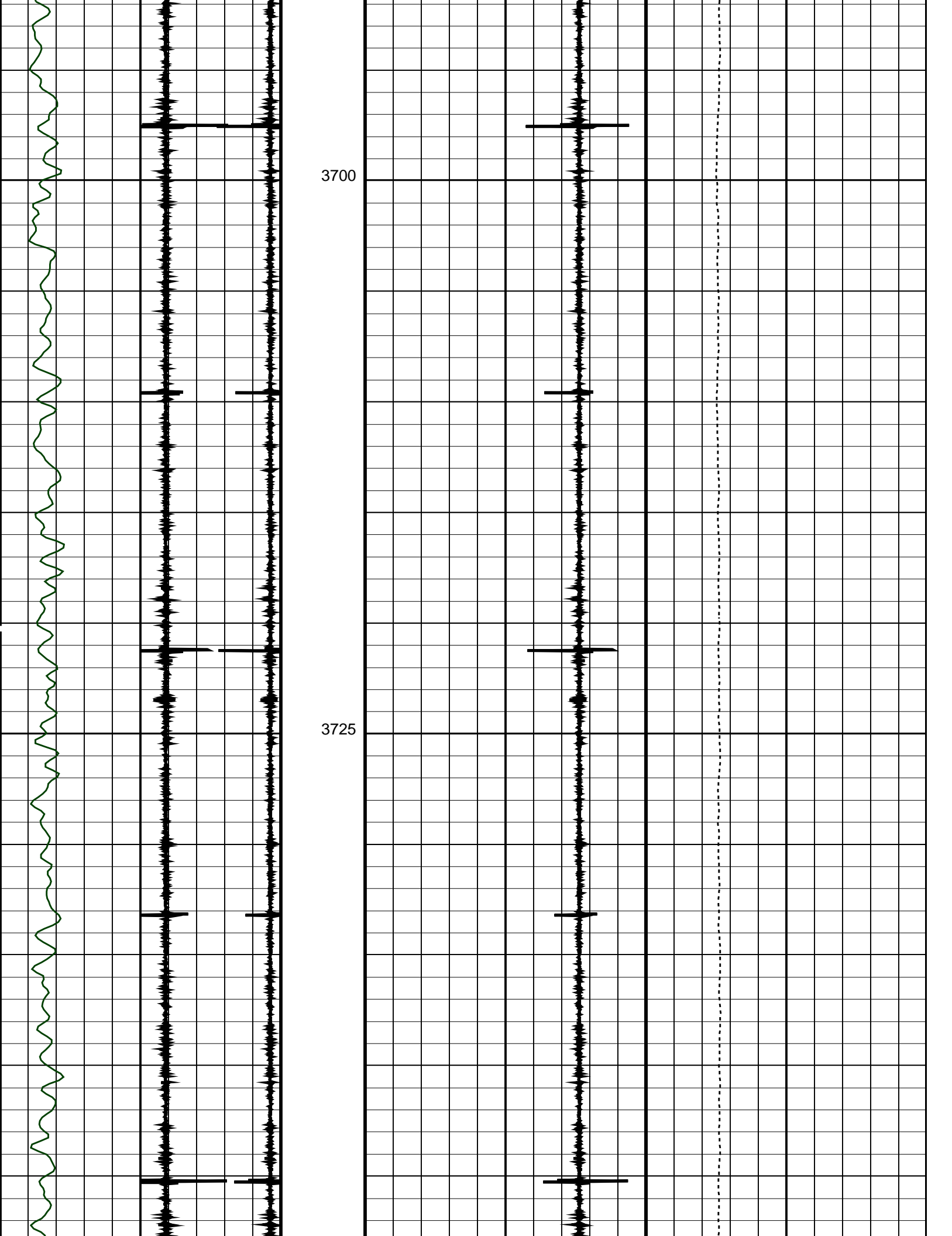
Tension (TENS)

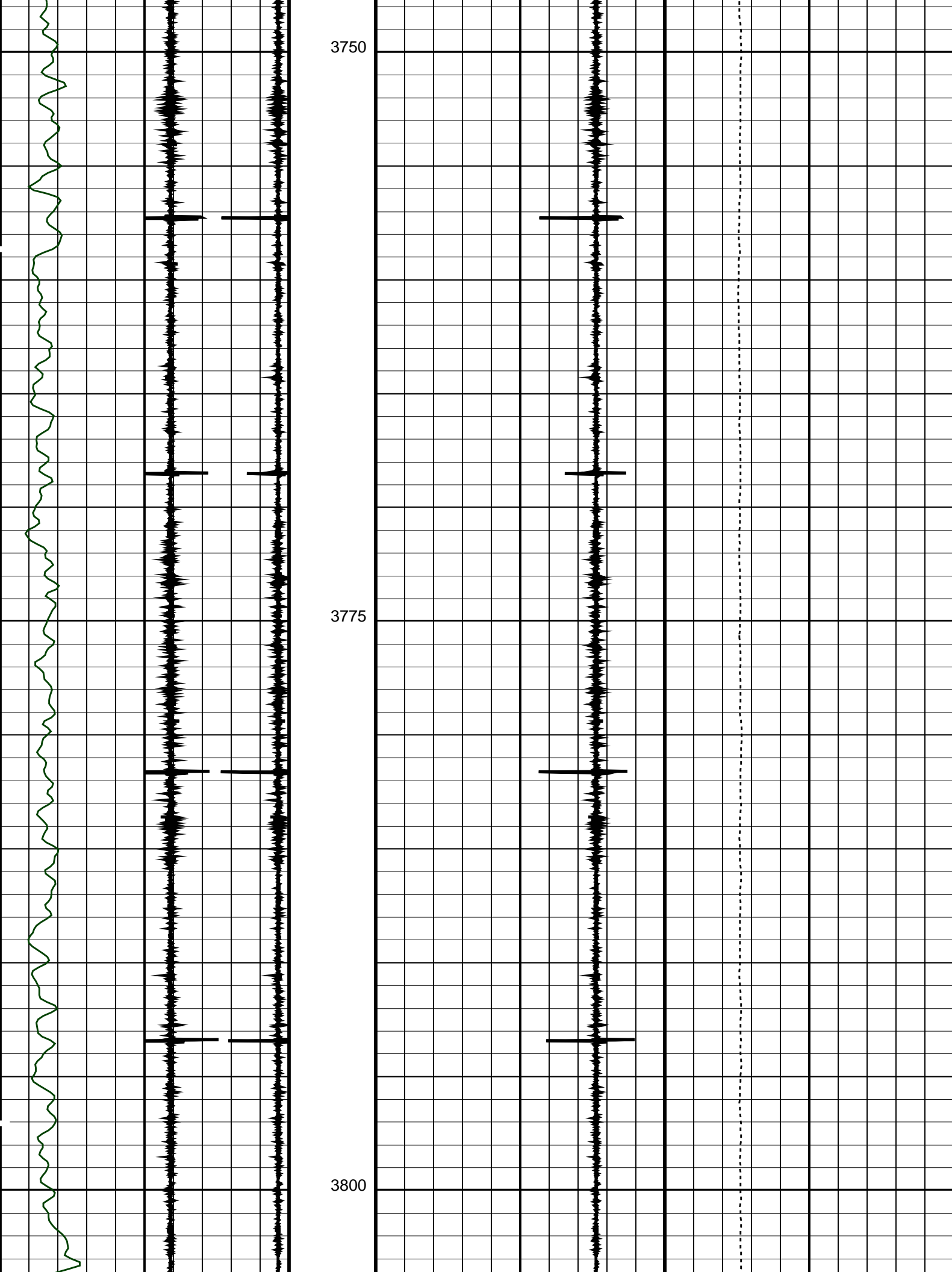
0 (LBF) 2000

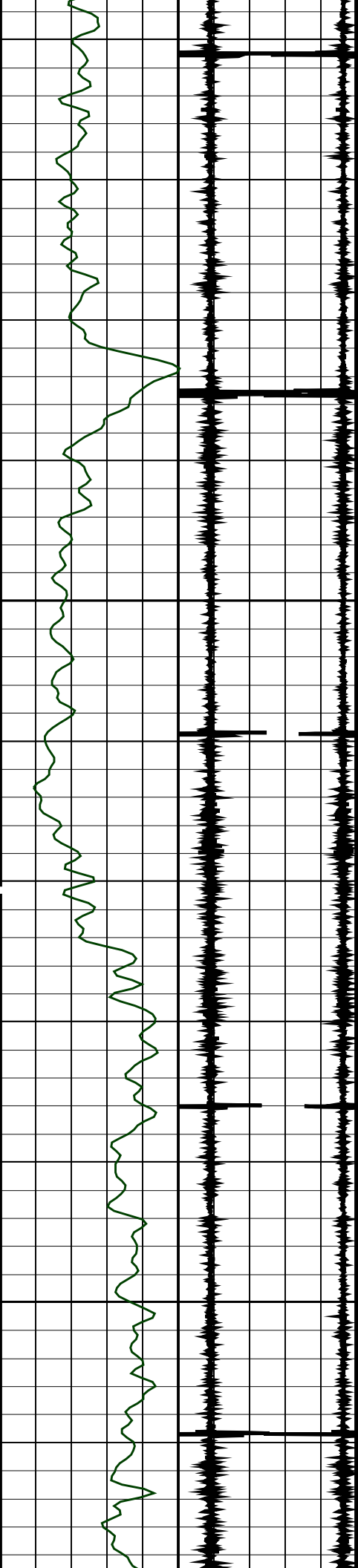
3575





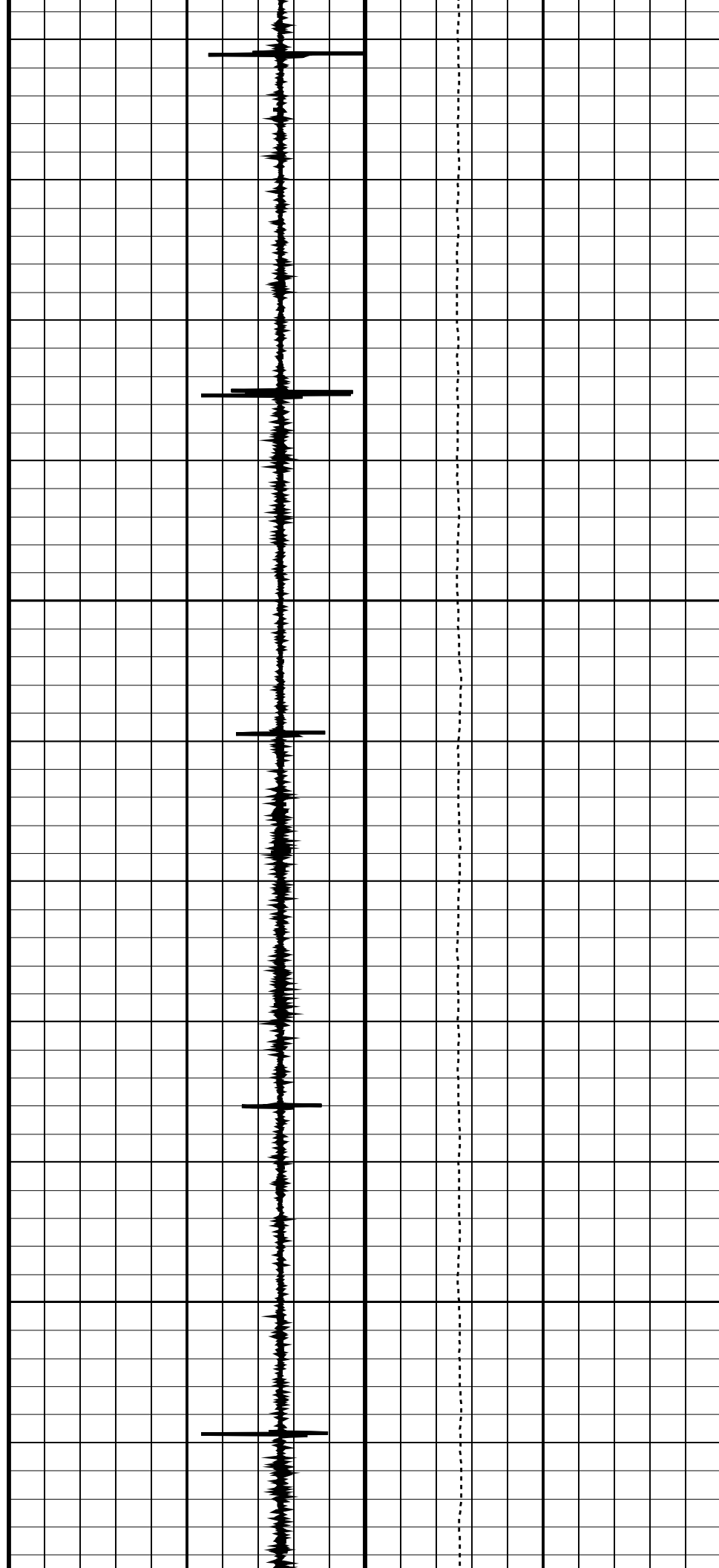


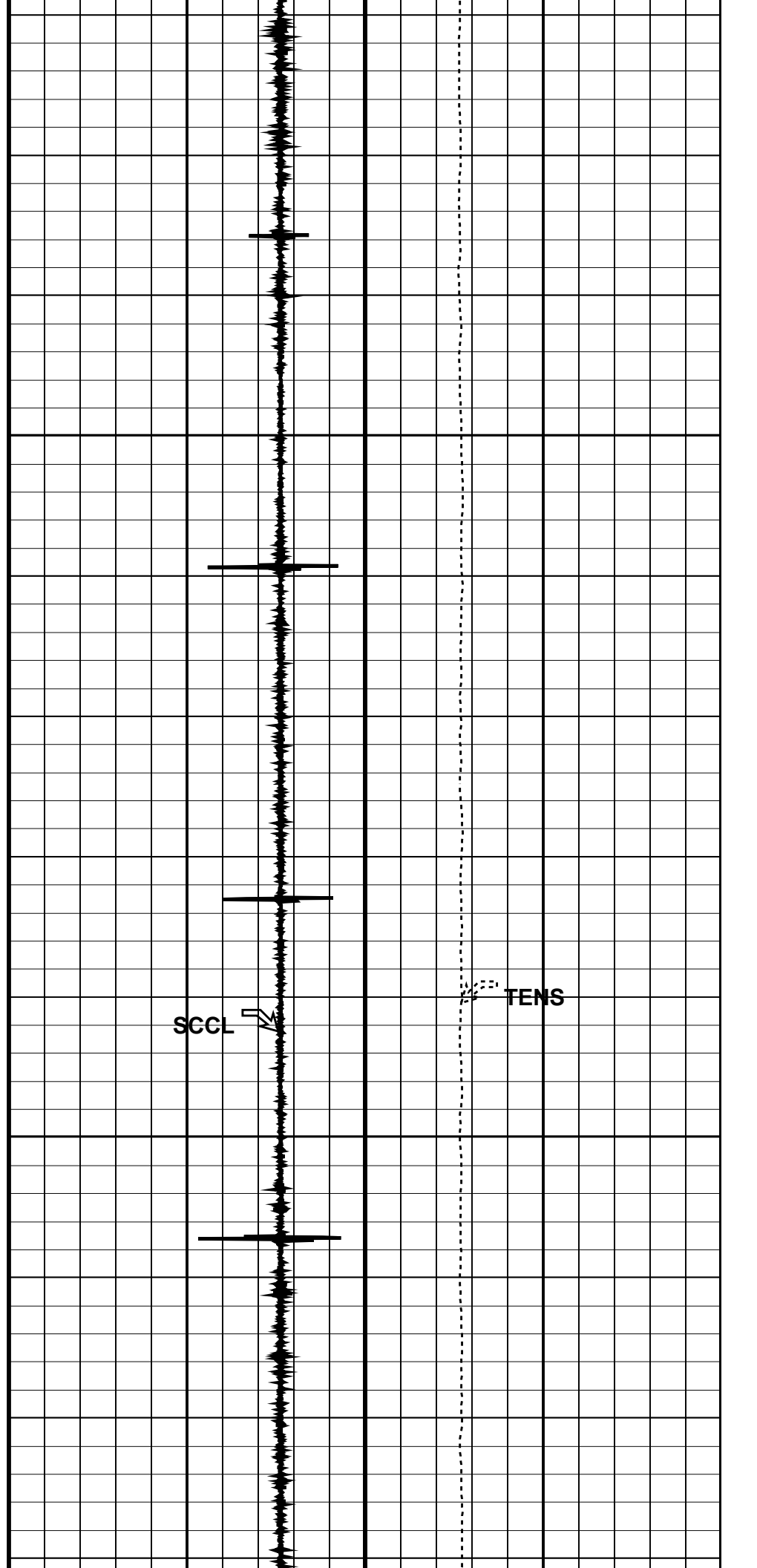
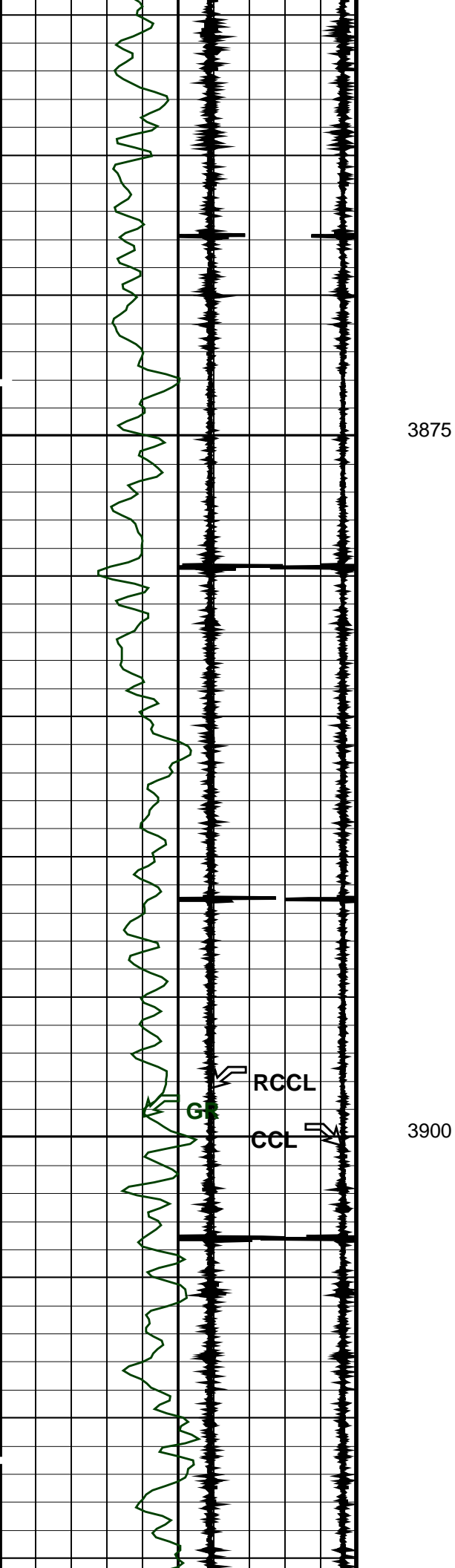


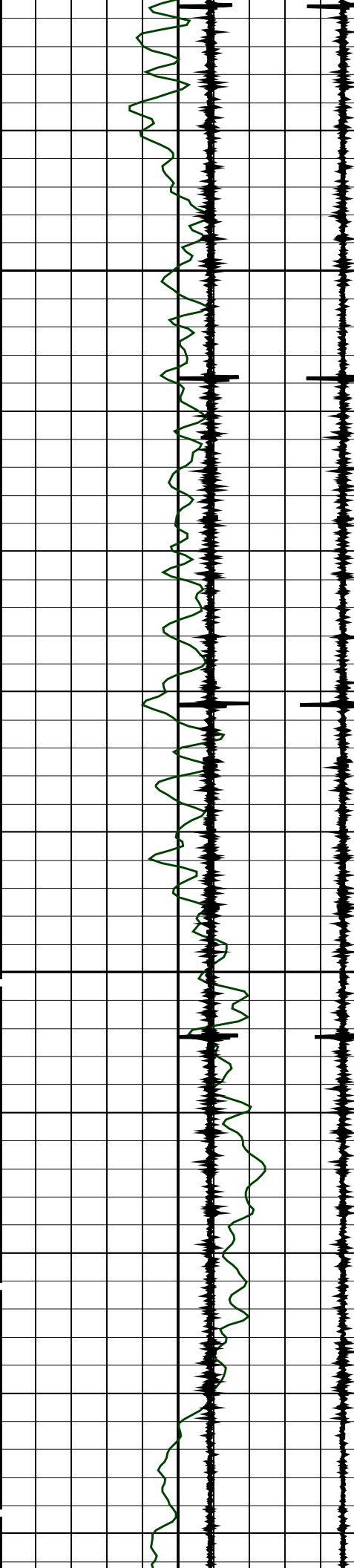


3825

3850

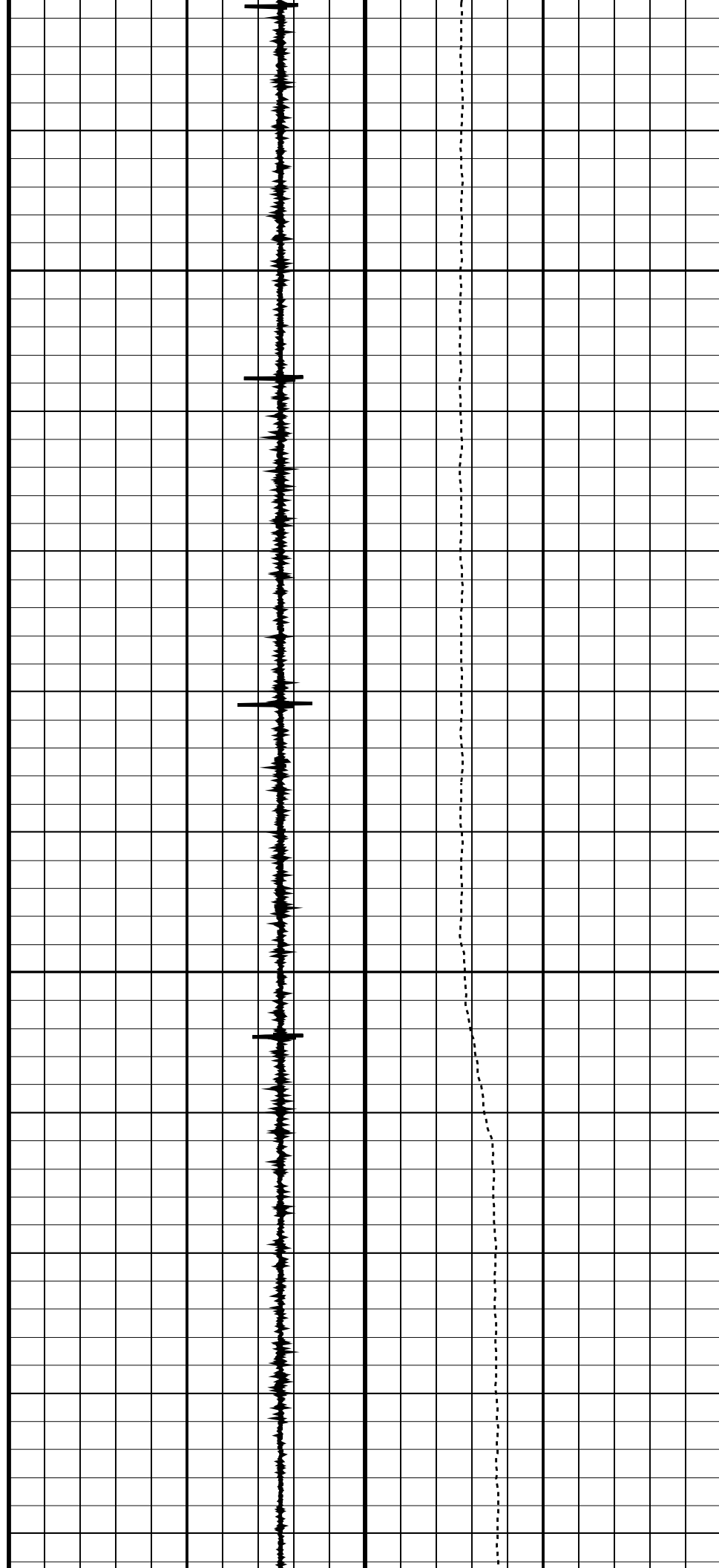


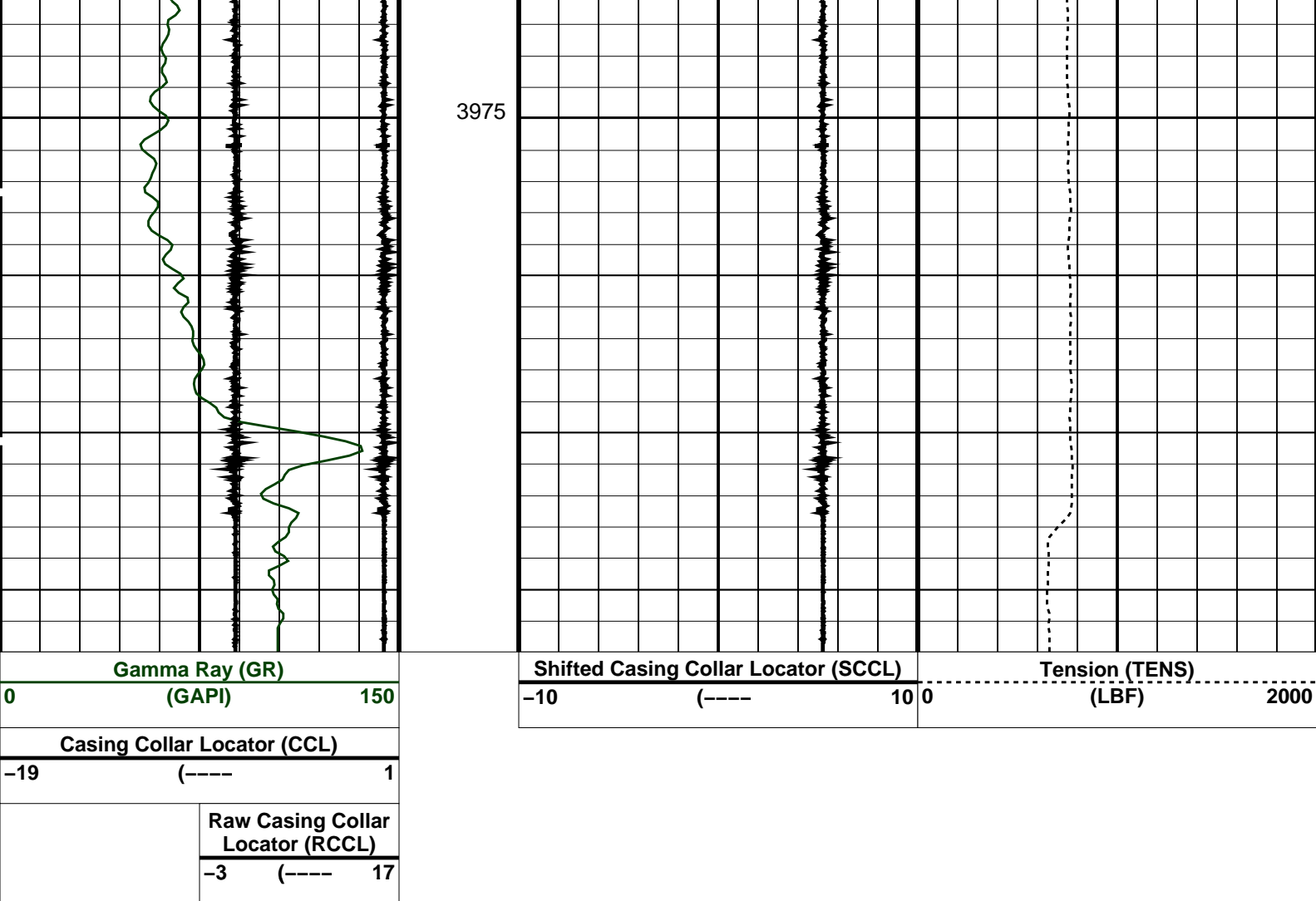




3925

3950





PIP SUMMARY

Time Mark Every 60 S

Parameters

DLIS Name	Description	Value
DO	System and Miscellaneous	
PP	Depth Offset for Playback	-3.0 M
	Playback Processing	NORMAL

Format: CORRELATION Vertical Scale: 1:200 Graphics File Created: 26-Jan-2007 21:50

OP System Version: 14C0-302

MCM

SHM_GUN 14C0-302 PGGT-CC 14C0-302

Input DLIS Files

DEFAULT Flip_PERFO_012LUP PRODUCER 26-Jan-2007 21:46 3995.0 M 3563.0 M

Output DLIS Files

DEFAULT PERFO_012PUP FN:17 PRODUCER 26-Jan-2007 21:50

Company: Esso Australia Pty. Ltd.

Schlumberger

Well: BMA A-25
Field: Bream
Rig: Prod 2 / ISS Rig 22

Country: **Australia**

HPI Plug
Setting Record
26-Jan-2007