



Company: **Esso Australia Ltd.**

Well: **B-3**

Field: **Bream B**

Rig: **Prod4**

Country: **Australia**

MWPT  
2 1/8"Phased Powerjet  
Perforation

Rig: Prod4

Field: Gippsland

Well: B-3

Company: Esso Australia Ltd.

LOCATION

Gippsland

Basin

Bass Strait

Elev.: K.B.

G.L. -63 m

D.F. 47.17 m

Permanent Datum: M.S.L.

Log Measured From: D.F.

Drilling Measured From: D.F.

State: Victoria

Max. Well Deviation 54 deg

Longitude 147 50'16.81"E

Latitude 038 31'10.90"S

Logging Date 29-Oct-2006

Run Number One

Depth Driller 2777 m

Schlumberger Depth 2775 m

Bottom Log Interval 2775 m

Top Log Interval 2750 m

Casing Fluid Type Production Fluids

Salinity

Density

Fluid Level

BIT/CASING/TUBING STRING

Bit Size 12.750 in

From

To

Casing/Tubing Size 9.625 in

Weight 43.5 lbm/ft

Grade LT&C

From 20.75 m

To 2931 m

Maximum Recorded Temperatures 101 degC

Logger On Bottom 29-Oct-2006 10:00

Unit Number 889 Prod4

Recorded By G Wright.

Witnessed By B White.

PVT DATA

Oil Density	Run 1	Run 2	Run 3
Water Salinity			
Gas Gravity			
Bo			

Bw			
1/Bg			
Bubble Point Pressure			
Bubble Point Temperature			

Solution GOR			
Maximum Deviation	54 deg		

CEMENTING DATA

Primary/Squeeze	Primary		
Casing String No			
Lead Cement Type			

Volume			
Density			
Water Loss			
Additives			

Tail Cement Type			
Volume			
Density			
Water Loss			
Additives			

Expected Cement Top

Logging Date

Run Number

Depth Driller

Schlumberger Depth

Bottom Log Interval

Top Log Interval

Casing Fluid Type

Salinity

Density

Fluid Level

BIT/CASING/TUBING STRING

Bit Size

From

To

Casing/Tubing Size

Weight

Grade

From

To

Maximum Recorded Temperatures

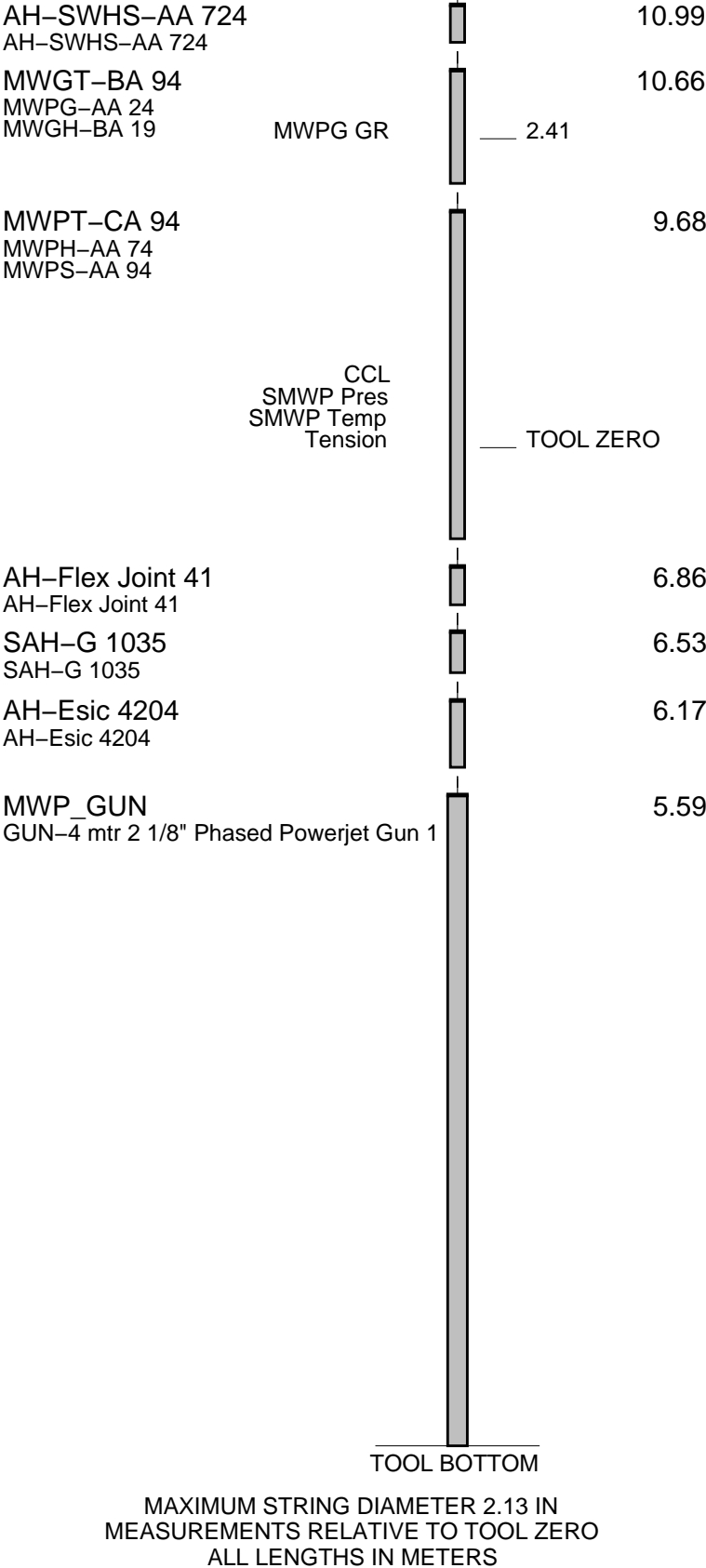
Logger On Bottom 10:00

Unit Number Location

Recorded By

Witnessed By





Production String	(in) (m) OD ID MD	Well Schematic	(m) (in) MD OD ID	Casing String
-------------------	----------------------	----------------	----------------------	---------------

	9.600	3.500	20.0		20.8 20.8	13.625 13.385	9.625	Casing String Liner Hanger
Tubing Taper								
Shut-in Valve	3.500		452.0					
Gas Lift Mandrel	3.500		571.0					
					727.8	13.385		Casing Shoe
Gas Lift Mandrel	3.500		946.0					
Gas Lift Mandrel	3.500		1311.0					
Nipple	3.500		1328.0					
Packer	9.625	3.500	2764.0		2773.0 2780.0 2787.0 2881.3	9.625		Perforation Zone Perforation Zone Perforation Zone Casing Shoe

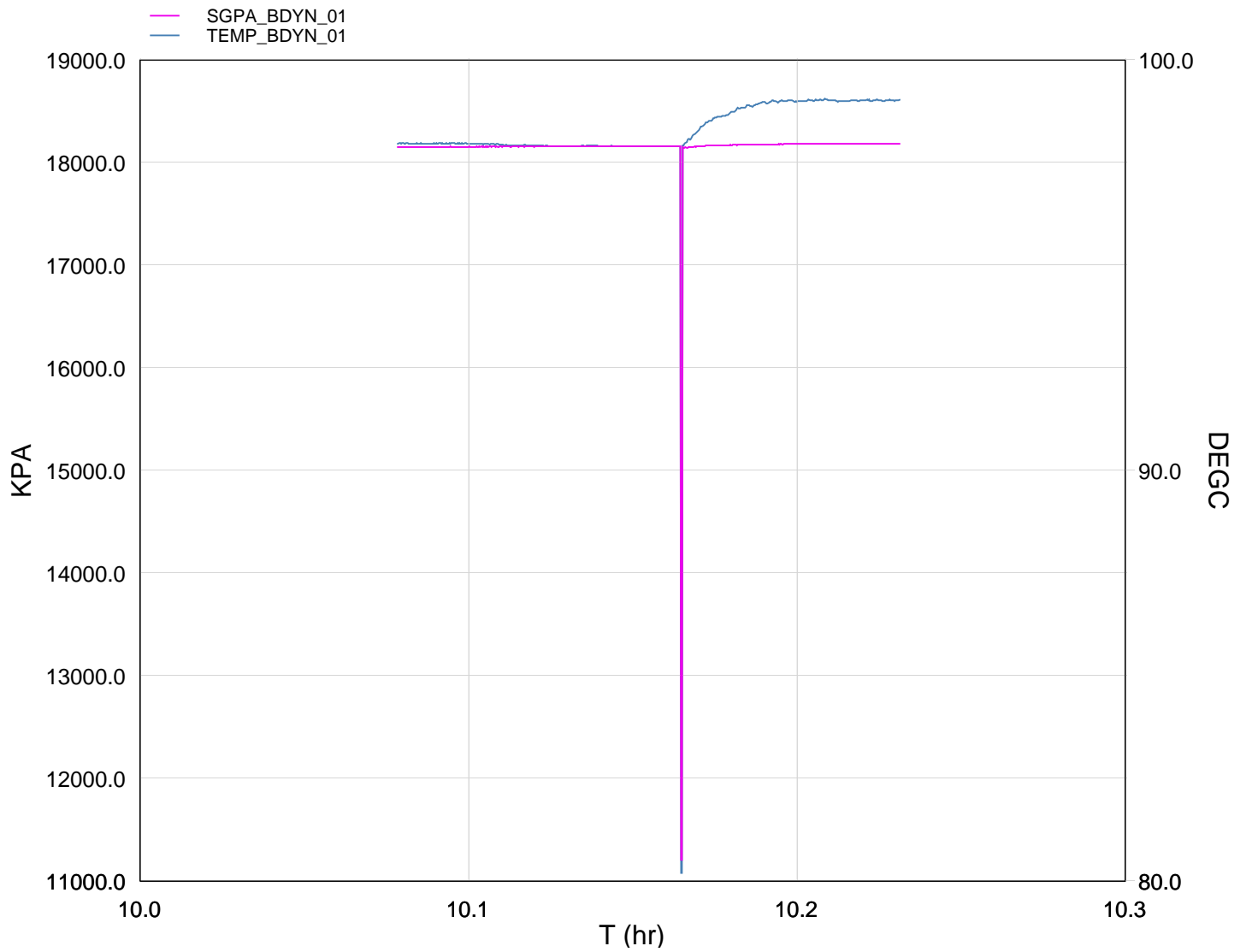


Job Events Summary

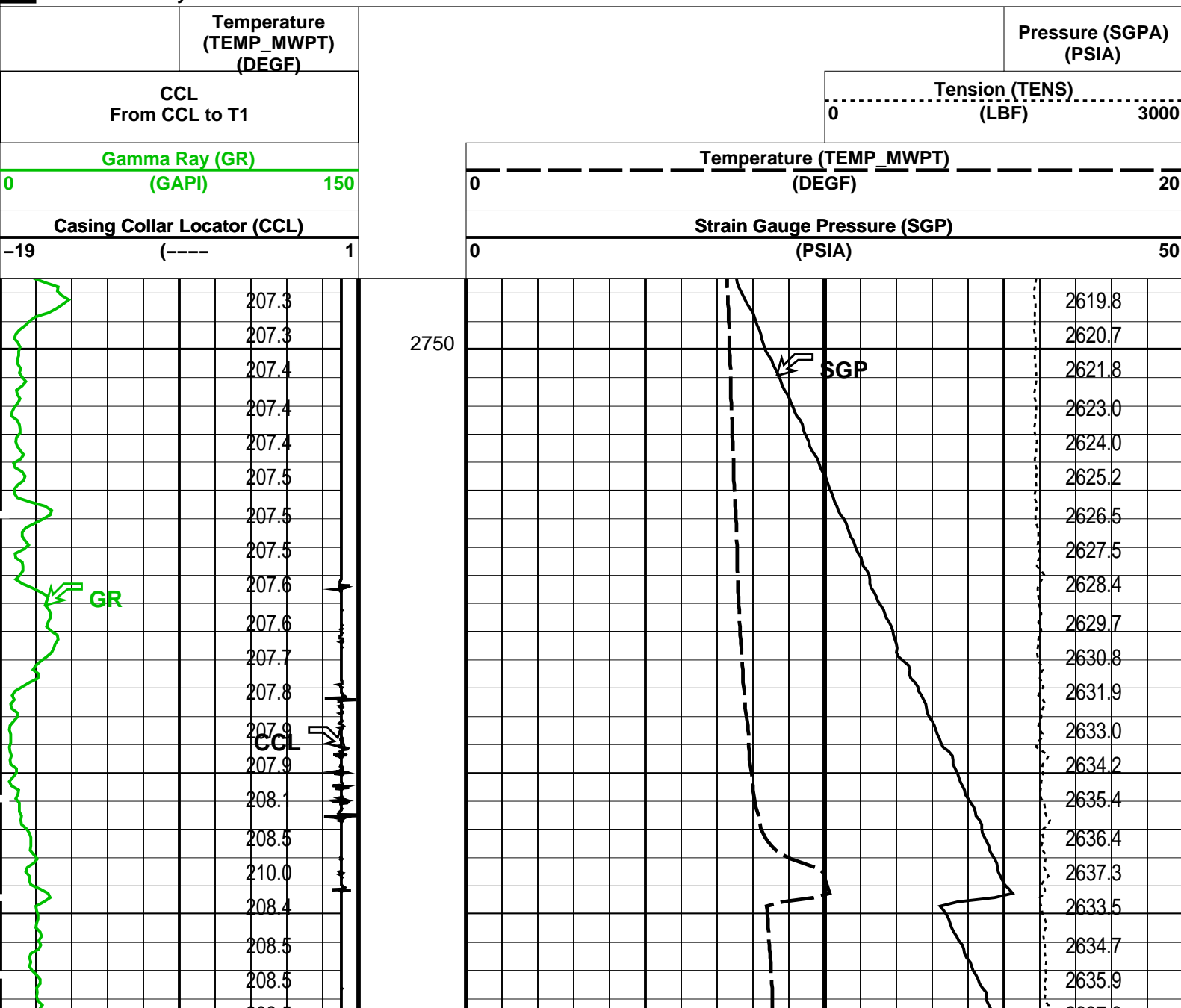
MAXIS Field Log

Schlumberger Job Event Summary

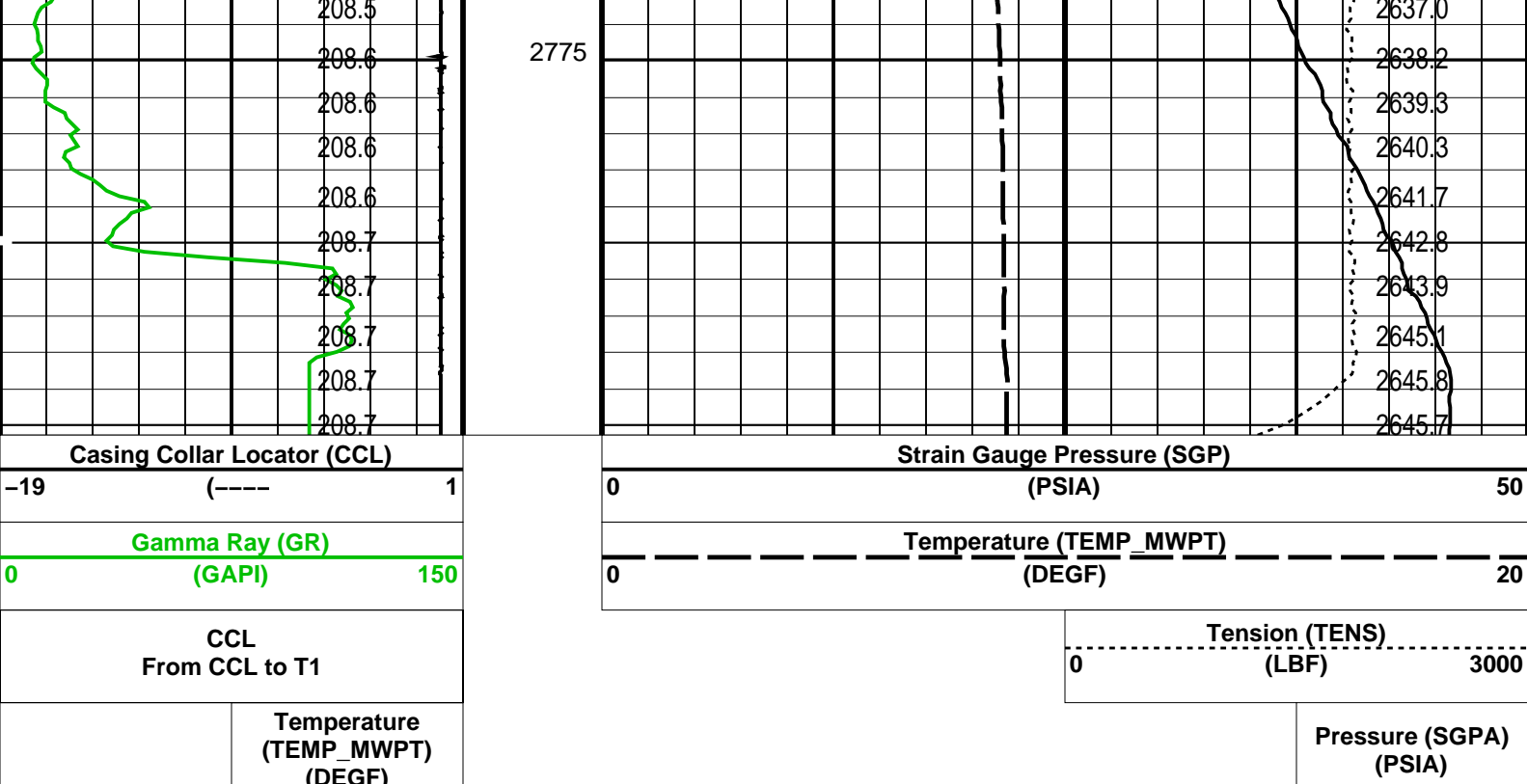
	Time	Elapsed Time	Depth (M)	File
Log Pass (down)	29-Oct-2006 10:36	000:18	965.5 – 2799.0	PERFO_016LDP
Log Pass (up)	29-Oct-2006 10:54	000:04	2796.5 – 2763.6	PERFO_017LUP
Log Pass (up)	29-Oct-2006 11:01	000:17	2785.3 – 2747.5	PERFO_018LUP
Station Log	29-Oct-2006 11:04	000:10	2769.5 – 1.4	PERFO_019LTP



TIME	PSIA	DEGF
1680.0	2632.9087	208.3243
1710.0	2633.0033	208.3448
1740.0	2633.1639	208.3438
1770.0	2633.2235	208.3241
1800.0	2633.2888	208.2828
1830.0	2633.5588	208.2667
1860.0	2633.6860	208.2258
1890.0	2633.7183	208.2379
1920.0	2633.7028	208.2376
1950.0	2633.8929	208.2231
1980.0	2633.9739	208.2244
2010.0	2633.0033	208.7149
2040.0	2635.2992	209.5272
2070.0	2636.0649	210.0040
2100.0	2636.7651	210.1917
2130.0	2637.0491	210.1901
2160.0	2637.3730	210.2147
2190.0	2637.5189	210.2246
2220.0	2637.5041	210.2003







PIP SUMMARY

Time Mark Every 60 S

Parameters		
DLIS Name	Description	Value
MWPT-CA: MEASUREMENT WHILE PERFORATING TOOL		
DEVI_FL_CORR	Deviation Angle for Flow Line Correction	0 DEG
FLD	Flow Line Density	1 G/C3
MWPT_NULL_SOURCE	MWPT NULL Temperature Source	TEMS
MWPT_NULL_TEMP	MWPT NULL Temperature	0.0 DEGC

Format: MWP    Vertical Scale: 1:200    Graphics File Created: 29-Oct-2006 11:01

OP System Version: 14C0-302			
MCM			
MWP_GUN	SRC-3220-WPP-AAP5	MWPT-CA	SRC-3220-WPP-AAP5
MWGT-BA	SRC-3220-WPP-AAP5		

Output DLIS Files			
DEFAULT	PERFO_018LUP	FN:17	PRODUCER 29-Oct-2006 11:01

Company: **Esso Australia Ltd.**

Well: **B-3**

Field: **Bream B**

Rig: **Prod4**

Country: **Australia**

**Schlumberger**

MWPT  
2 1/8"Phased Powerjet  
Perforation