

Company: Esso Australia Ltd.

Well: B-16
Field: Bream B
Rig : Prod4

Country: Australia

Prod4
Bream B
Gippsland
B-16
Esso Australia Ltd.

7" HPI PSP Plug
2 1/8" Phased Powerjet
MWPT Perforation

LOCATION			Elev.: K.B. G.L. -63 m D.F. 47.17 m
Gippsland Basin Bass Strait			
Permanent Datum:	M.S.L.	Elev.: 0 m	
Log Measured From:	D.F.	47.2 m above Perm. Datum	
Drilling Measured From:	D.F.		
State: Victoria	Max. Well Deviation 58 deg	Longitude 147 50'16.98"E	Latitude 038 31'11.10"S

Logging Date	20-Oct-2006		
Run Number	1 thru 3		
Depth Driller	2380 m		
Schlumberger Depth	2380 m		
Bottom Log Interval	2275 m		
Top Log Interval	2200 m		
Casing Fluid Type	Production Fluids		
Salinity			
Density			
Fluid Level			
BIT/CASING/TUBING STRING			
Bit Size	8.500 in		
From			
To			
Casing/Tubing Size	7.000 in		
Weight	26 lbn/ft		
Grade	L-80		
From	27 m		
To	2599.1 m		
Maximum Recorded Temperatures	231 degf		
Logger On Bottom	20-Oct-2006		12.45
Unit Number	889	Prod4	
Recorded By	G Wright.		
Witnessed By	B White.		

PVT DATA			Run 1	
Oil Density				
Water Salinity				
Gas Gravity				
Bo				
Bw				
1/Bg				
Bubble Point Pressure				
Bubble Point Temperature				
Solution GOR				
Maximum Deviation	58 deg			
CEMENTING DATA				
Primary/Squeeze	Primary			
Casing String No				
Lead Cement Type				
Volume				
Density				
Water Loss				
Additives				
Tail Cement Type				
Volume				
Density				
Water Loss				
Additives				
Expected Cement Top				
Logging Date				
Run Number				
Depth Driller				
Schlumberger Depth				
Bottom Log Interval				
Top Log Interval				
Casing Fluid Type				
Salinity				
Density				
Fluid Level				
BIT/CASING/TUBING STRING				
Bit Size				
From				
To				
Casing/Tubing Size				
Weight				
Grade				
From				
To				
Maximum Recorded Temperatures				
Logger On Bottom				
Unit Number				
Recorded By				
Witnessed By				

DEPTH SUMMARY LISTING

Date Created: 20-Oct-2006 12:10:45

Depth System Equipment

Depth Measuring Device	Tension Device	Logging Cable
Type: IDW-EB Serial Number: 6373 Calibration Date: 28-SEP-2006 Calibrator Serial Number: 1009 Calibration Cable Type: 2-32ZT Wheel Correction 1: -2 Wheel Correction 2: -2	Type: CMTD-B/A Serial Number: 949 Calibration Date: 28-SEP-2006 Calibrator Serial Number: 1174 Calibration Gain: 1.01 Calibration Offset: 195.00	Type: 2-32ZT Serial Number: 24425 Length: 6600.00 M Conveyance Method: Wireline Rig Type: Offshore_Mobile

Depth Control Parameters

Log Sequence:	Subsequent Log In the Well
Reference Log Name:	Solar composite.
Reference Log Run Number:	1
Reference Log Date:	

Depth Control Remarks

1. Correlated to Solar composite log supplied with program.
2. IDW-EB 6373 used as primary depth control.
3. Z-chart used as back-up.
4.
5.
6.

DISCLAIMER

THE USE OF AND RELIANCE UPON THIS RECORDED-DATA BY THE HEREIN NAMED COMPANY (AND ANY OF ITS AFFILIATES, PARTNERS, REPRESENTATIVES, AGENTS, CONSULTANTS AND EMPLOYEES) IS SUBJECT TO THE TERMS AND CONDITIONS AGREED UPON BETWEEN SCHLUMBERGER AND THE COMPANY, INCLUDING: (a) RESTRICTIONS ON USE OF THE RECORDED-DATA; (b) DISCLAIMERS AND WAIVERS OF WARRANTIES AND REPRESENTATIONS REGARDING COMPANY'S USE OF AND RELIANCE UPON THE RECORDED-DATA; AND (c) CUSTOMER'S FULL AND SOLE RESPONSIBILITY FOR ANY INFERENCE DRAWN OR DECISION MADE IN CONNECTION WITH THE USE OF THIS RECORDED-DATA.

OTHER SERVICES1	OTHER SERVICES2
OS1: None OS2: OS3: OS4: OS5:	OS1: OS2: OS3: OS4: OS5:
REMARKS: RUN NUMBER 1	REMARKS: RUN NUMBER 2
Log correlated to ExxonMobil dated 15-Aug-05.	
Maximum well deviation = 58 degrees at 2045m MDKB.	
Run one, 2 1/8" dummy plug run to 2400m MDKB.	
Run two, 7" HPI longlife PSP run and set at 2380m MDKB.	
Run three, 2 1/8" 45 degree Phased Powerjet at 6 spf were used for this perforation.	
Interval perforated 2252m to 2258m MDKB.	
SPHR = 2854 cc/in	

SBHT = 231 degf.					
Crew : John Light & Andy Hall.					
RUN 1			RUN 2		
SERVICE ORDER #:		AusI06328198			
PROGRAM VERSION:		14C0-302			
FLUID LEVEL:					
LOGGED INTERVAL	START	STOP	LOGGED INTERVAL	START	STOP
EQUIPMENT DESCRIPTION					
RUN 1			RUN 2		
SURFACE EQUIPMENT			SURFACE EQUIPMENT		
WITM (SHM)			WITM-A 3576 PSC_16MHZ 827		
DOWNHOLE EQUIPMENT			DOWNHOLE EQUIPMENT		
<div> <div>AH-SWBS-B 731</div> <div>AH-SWBS-B 731</div> <div>AH-SWBS-B 762</div> <div>AH-SWBS-B</div> <div>MH-SWHS-A 726</div> <div>MH-SWHS-A 726</div> <div>CCL-L</div> <div>CCL-L</div> <div>SHM_GUN</div> <div>GUN-HPI Plug and Setting Tool</div> </div> <div> <div>14.86</div> <div>14.17</div> <div>13.49</div> <div>13.16</div> <div>12.70</div> </div> <div> <div>TOOL ZERO</div> </div>			<div> <div>AH-SWBS-B 731</div> <div>AH-SWBS-B 731</div> <div>AH-SWBS-B 762</div> <div>AH-SWBS-B 762</div> <div>MH-SWHS-A 726</div> <div>MH-SWHS-A 726</div> <div>PSPT-B</div> <div>PSC-A 827</div> <div>PSPT-B 827</div> <div>PSTC 827</div> <div>PBMS-B 827</div> <div>CQG_F_Mano 827</div> <div>RTD Thermometer 827</div> <div>GR 827</div> <div>CCL 827</div> <div>PBMS</div> <div>EQF-43</div> <div>EQF-43</div> </div> <div> <div>9.23</div> <div>8.54</div> <div>7.85</div> <div>7.52</div> <div>7.52</div> <div>6.39</div> <div>5.46</div> <div>5.36</div> <div>5.23</div> <div>5.00</div> <div>5.00</div> </div> <div> <div>Detail MT</div> <div>TelStatus</div> <div>CTEM</div> <div>GR</div> <div>Well_Temp</div> <div>CQG Manom</div> <div>CCL</div> <div>PBMS PSTC</div> </div>		

AH–Dummy Plug
AH–Dummy Plug

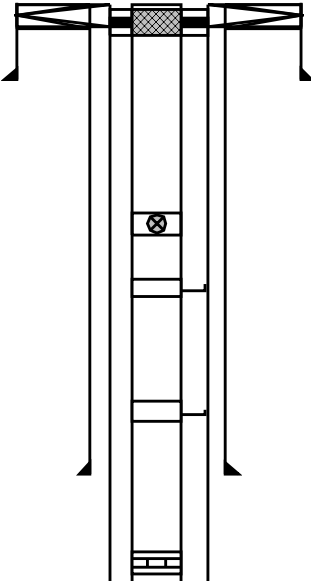
3.17

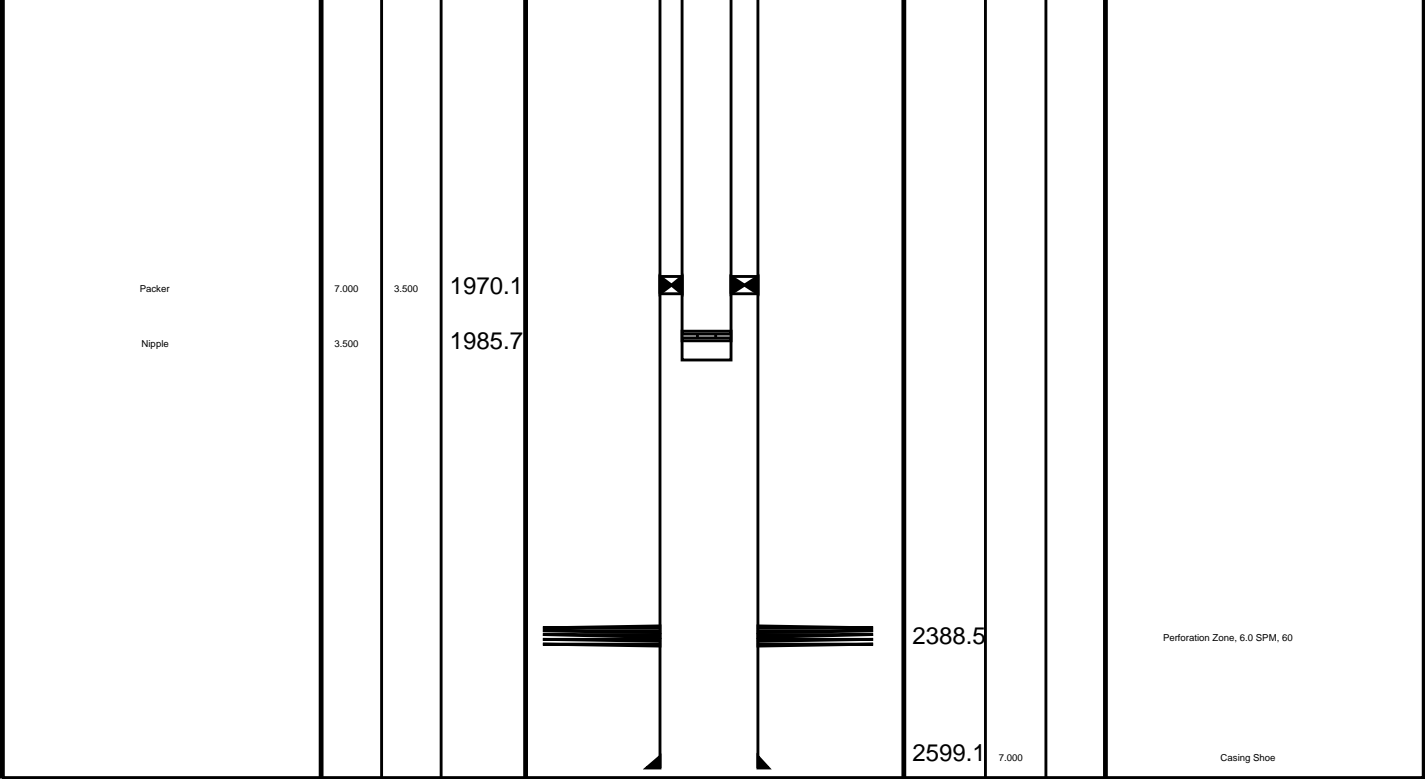
TOOL BOTTOM

MAXIMUM STRING DIAMETER 2.13 IN
MEASUREMENTS RELATIVE TO TOOL ZERO
ALL LENGTHS IN METERS

Tension HV 0.00
TOOL ZERO

MAXIMUM STRING DIAMETER 1.69 IN
MEASUREMENTS RELATIVE TO TOOL ZERO
ALL LENGTHS IN METERS

Production String	(m)		MD	Well Schematic	(m)			Casing String
	OD	ID			MD	OD	ID	
Tubing	3.500		27.6		27.0	9.625		Casing String
Tubing Hanger	7.000	3.500	25.0		27.0	20.000	9.625	Liner Hanger
					153.0	20.000		Casing Shoe
					26.0	20.000		Casing String
Shutin Valve	3.500		450.3					
Gas Lift Mandrel	3.500		526.2					
Gas Lift Mandrel	3.500		766.0					
Nipple	3.500		999.6		808.9	9.625		Casing Shoe



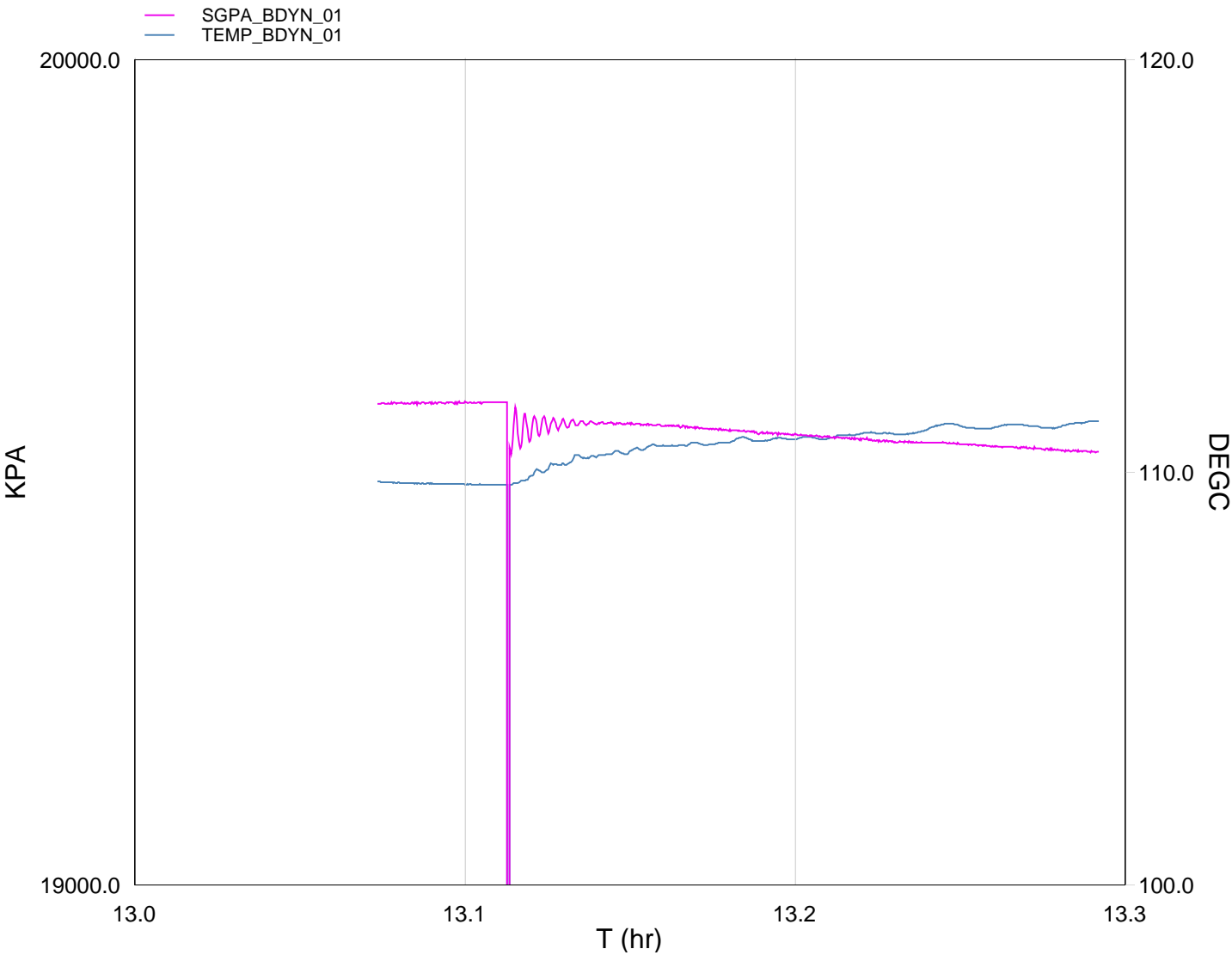
Job Events Summary

MAXIS Field Log

Schlumberger Job Event Summary

Time	Elapsed Time	Depth (M)	File
Log Pass (down)	20-Oct-2006 12:36 000:02	2169.4 – 2266.9	PERFO_037LDP
Log Pass (up)	20-Oct-2006 12:40 000:06	2268.9 – 2220.6	PERFO_038LUP
Log Pass (up)	20-Oct-2006 12:54 000:04	2259.9 – 2222.4	PERFO_040LUP
Log Pass (up)	20-Oct-2006 13:01 000:21	2260.5 – 2218.0	PERFO_041LUP
Station Log	20-Oct-2006 13:04 000:13	2248.4 – 2.0	PERFO_042LTP

MAXIS Field Log



TIME	PSIA	DEGF
1680.0	2840.3200	229.5675
1710.0	2840.3155	229.5548
1740.0	2840.3551	229.5058
1770.0	2840.4702	229.4863
1800.0	2840.5248	229.4650
1830.0	-168.3024	4.6297
1860.0	2837.7012	230.0960
1890.0	2837.6540	230.3918
1920.0	2837.0750	230.6760
1950.0	2836.8337	230.9458
1980.0	2836.5559	231.0422

1800.0	2833.6659	231.6122
2010.0	2836.4079	231.1576
2040.0	2836.0273	231.2340
2070.0	2835.5920	231.3048
2100.0	2835.2506	231.3605
2130.0	2835.0381	231.4921
2160.0	2834.7077	231.5428
2190.0	2834.4570	231.6035
2220.0	2833.9596	231.7128
2250.0	2833.7868	231.6856
2280.0	2833.5391	231.7757
2310.0	2833.3375	232.1241
2340.0	2833.0511	231.9218
2370.0	2832.6092	232.0467
2400.0	2832.5118	232.0285
2430.0	2832.2209	231.9547
2460.0	2831.9871	232.1709

Schlumberger

Gun # 1
Shoot Pass

MAXIS Field Log

Output DLIS Files

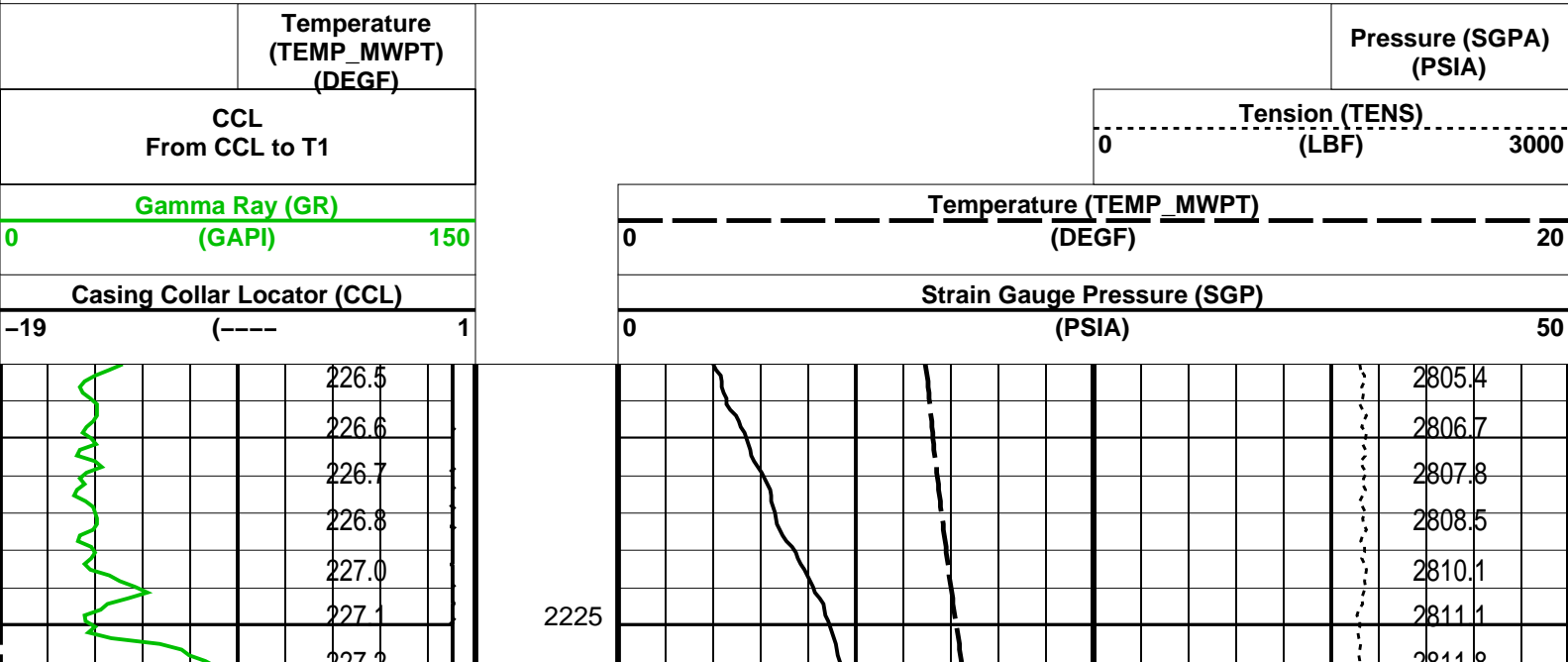
DEFAULT PERFO_041LUP FN:40 PRODUCER 20-Oct-2006 13:01

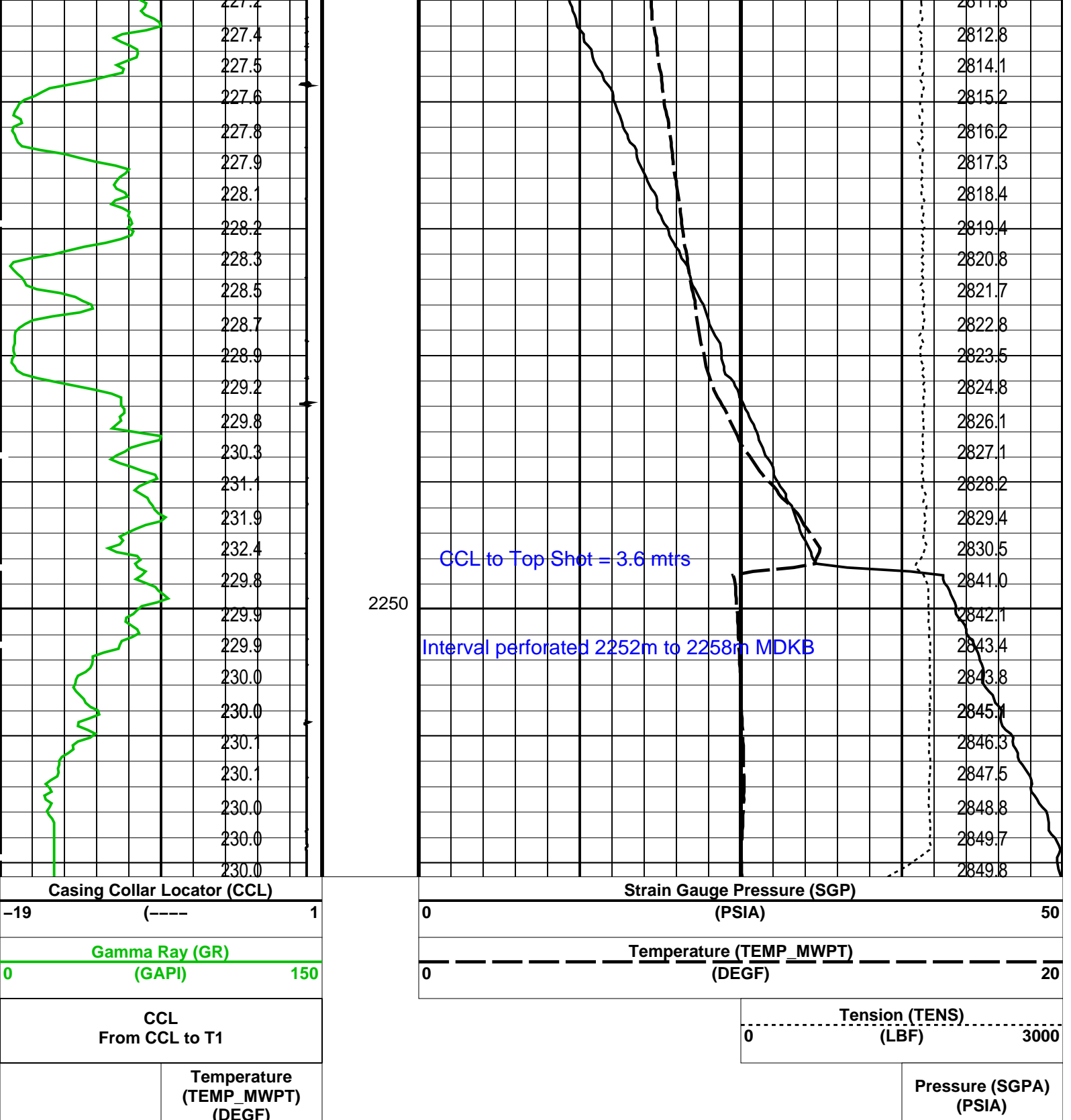
OP System Version: 14C0-302
MCM

MWP_GUN SRC-3220-WPP-AAP\$ MWPT-CA SRC-3220-WPP-AAP\$
MWGT-AA SRC-3220-WPP-AAP\$

PIP SUMMARY

Time Mark Every 60 S





PIP SUMMARY

Time Mark Every 60 S

Parameters

DLIS Name	Description	Value	
MWPT-CA: MEASUREMENT WHILE PERFORATING TOOL			
DEVI_FL_CORR	Deviation Angle for Flow Line Correction	0	DEG
FLD	Flow Line Density	1	G/C3
MWPT_NULL_SOURCE	MWPT NULL Temperature Source	TEMS	
MWPT_NULL_TEMP	MWPT NULL Temperature	0.0	DEGC

Format: MWP Vertical Scale: 1:200

Graphics File Created: 20-Oct-2006 13:01

MWP_GUN
MWGT-AA

SRC-3220-WPP-AAP\$
SRC-3220-WPP-AAP\$

MCM
MWPT-CA

SRC-3220-WPP-AAP\$

Output DLIS Files

DEFAULTPERFO_041LUPFN:40PRODUCER20-Oct-2006 13:01

Schlumberger

Gun # 1
Correlation Pass

MAXIS Field Log

Output DLIS Files

DEFAULTPERFO_040LUPFN:39PRODUCER20-Oct-2006 12:542259.9 M2222.4 M

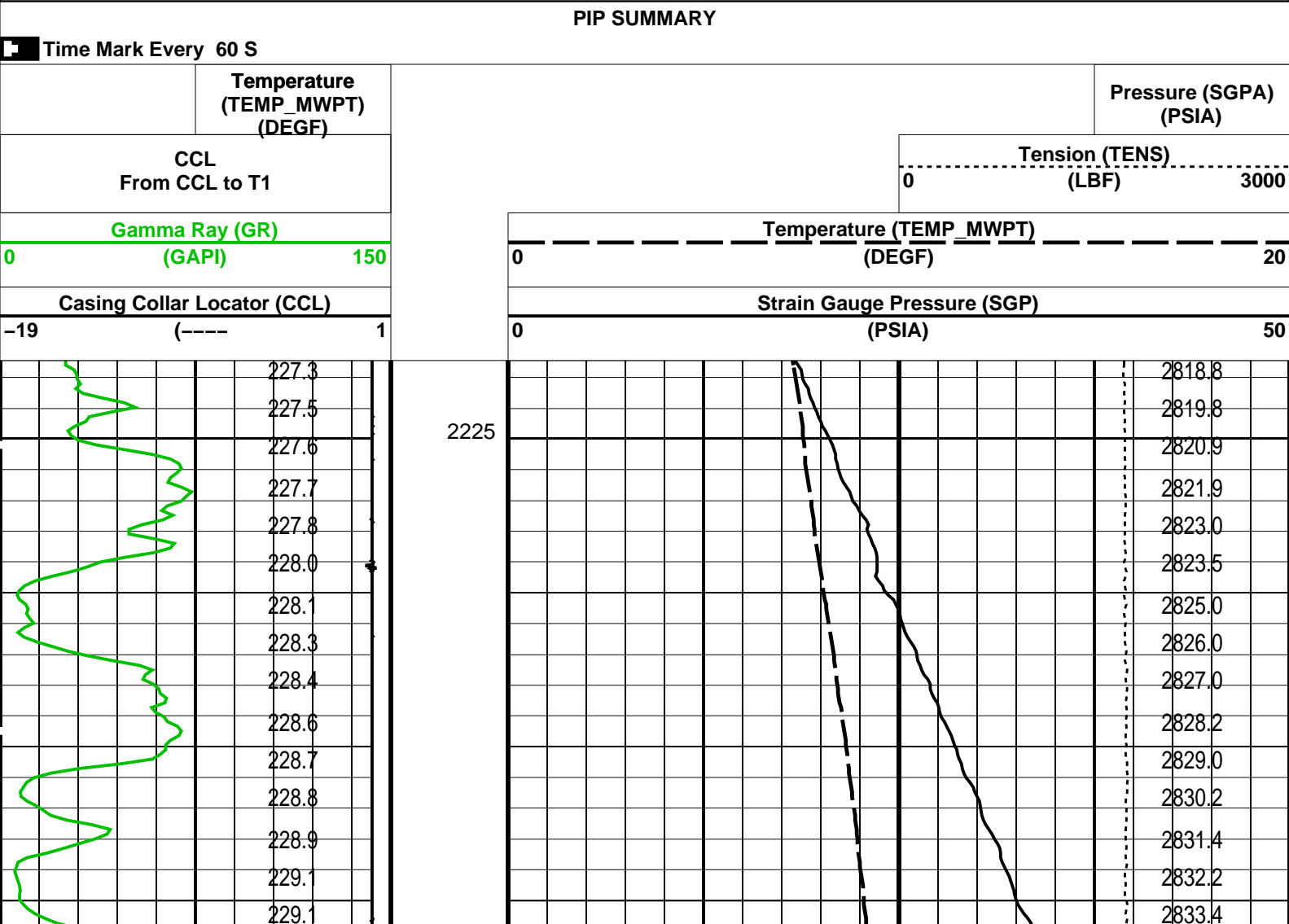
OP System Version: 14C0-302
MCM

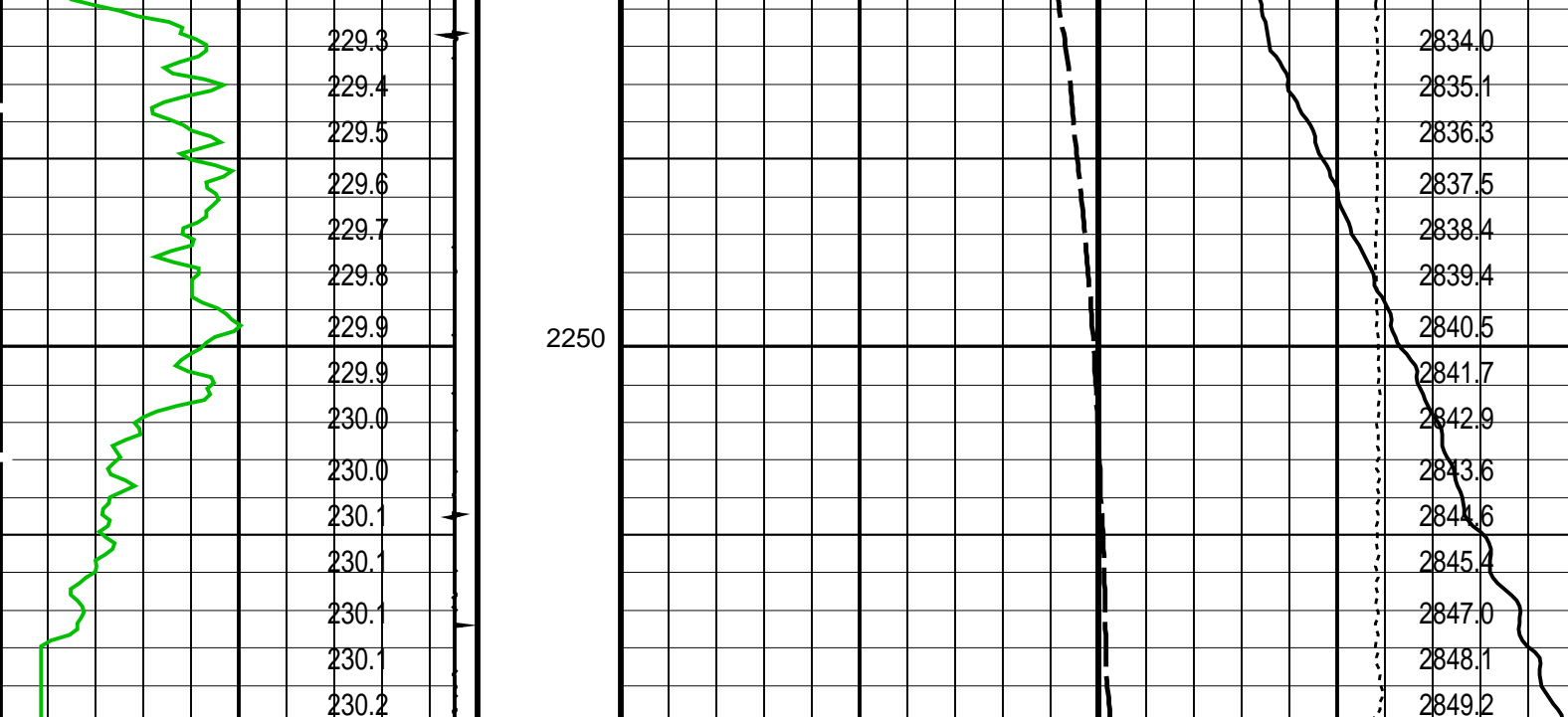
MWP_GUN
MWGT-AA

SRC-3220-WPP-AAP\$
SRC-3220-WPP-AAP\$

MWPT-CA

SRC-3220-WPP-AAP\$





Casing Collar Locator (CCL)		Strain Gauge Pressure (SGP)	
-19	(----) 1	0	(PSIA) 50
Gamma Ray (GR)		Temperature (TEMP_MWPT)	
0	(GAPI) 150	0	(DEGF) 20
CCL From CCL to T1		Tension (TENS)	
		0	(LBF) 3000
Temperature (TEMP_MWPT) (DEGF)		Pressure (SGPA) (PSIA)	

PIP SUMMARY

☒ Time Mark Every 60 S

Parameters

DLIS Name	Description	Value
MWPT-CA: MEASUREMENT WHILE PERFORATING TOOL		
DEVI_FL_CORR	Deviation Angle for Flow Line Correction	0 DEG
FLD	Flow Line Density	1 G/C3
MWPT_NULL_SOURCE	MWPT NULL Temperature Source	TEMS
MWPT_NULL_TEMP	MWPT NULL Temperature	0.0 DEGC

Format: MWP Vertical Scale: 1:200 Graphics File Created: 20-Oct-2006 12:54

OP System Version: 14C0-302

MCM

MWP_GUN	SRC-3220-WPP-AAP	MWPT-CA	SRC-3220-WPP-AAP
MWGT-AA	SRC-3220-WPP-AAP		

Output DLIS Files

DEFAULT	PERFO_040LUP	FN:39	PRODUCER	20-Oct-2006 12:54
---------	--------------	-------	----------	-------------------

Schlumberger

Plug Setting Pass

Output DLIS Files

DEFAULT PERFO_031LUP FN:30 PRODUCER 19-Oct-2006 14:52 2378.7 M 2340.9 M

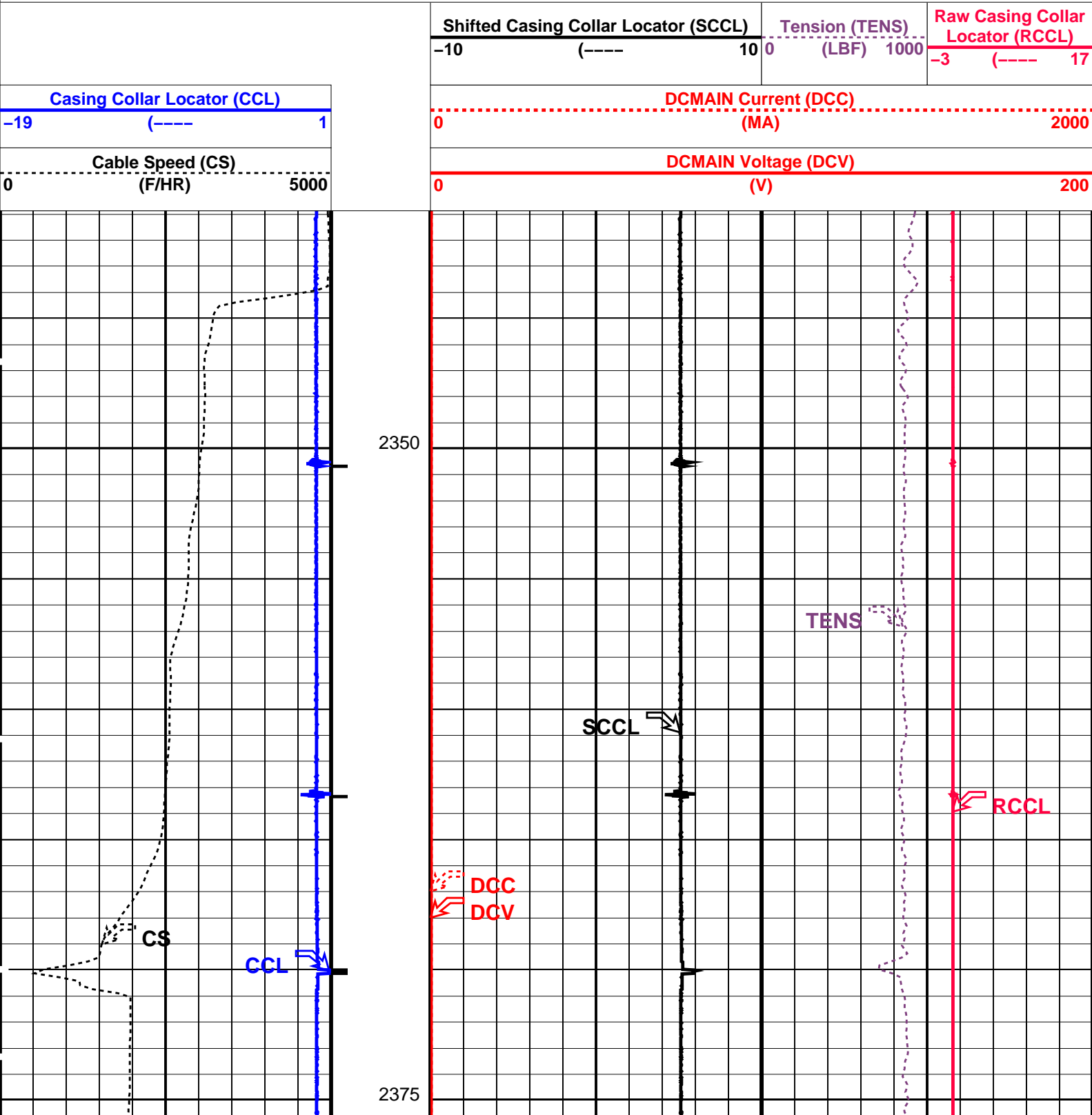
OP System Version: 14C0-302
MCM

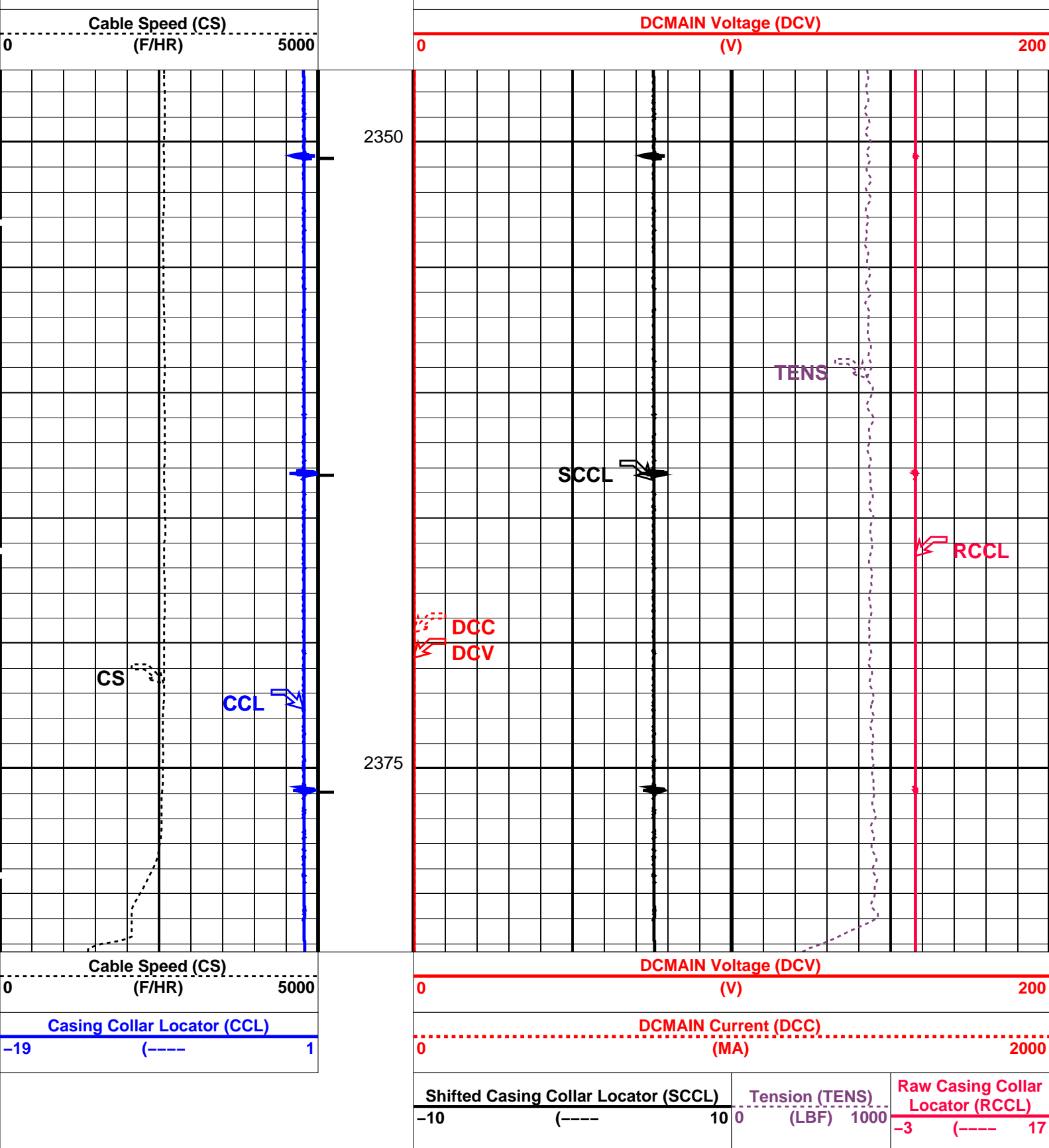
SHM_GUN SRC-3220-WPP-AAP CCL-L 14C0-302

PIP SUMMARY

└─ Casing Collars

Time Mark Every 60 S



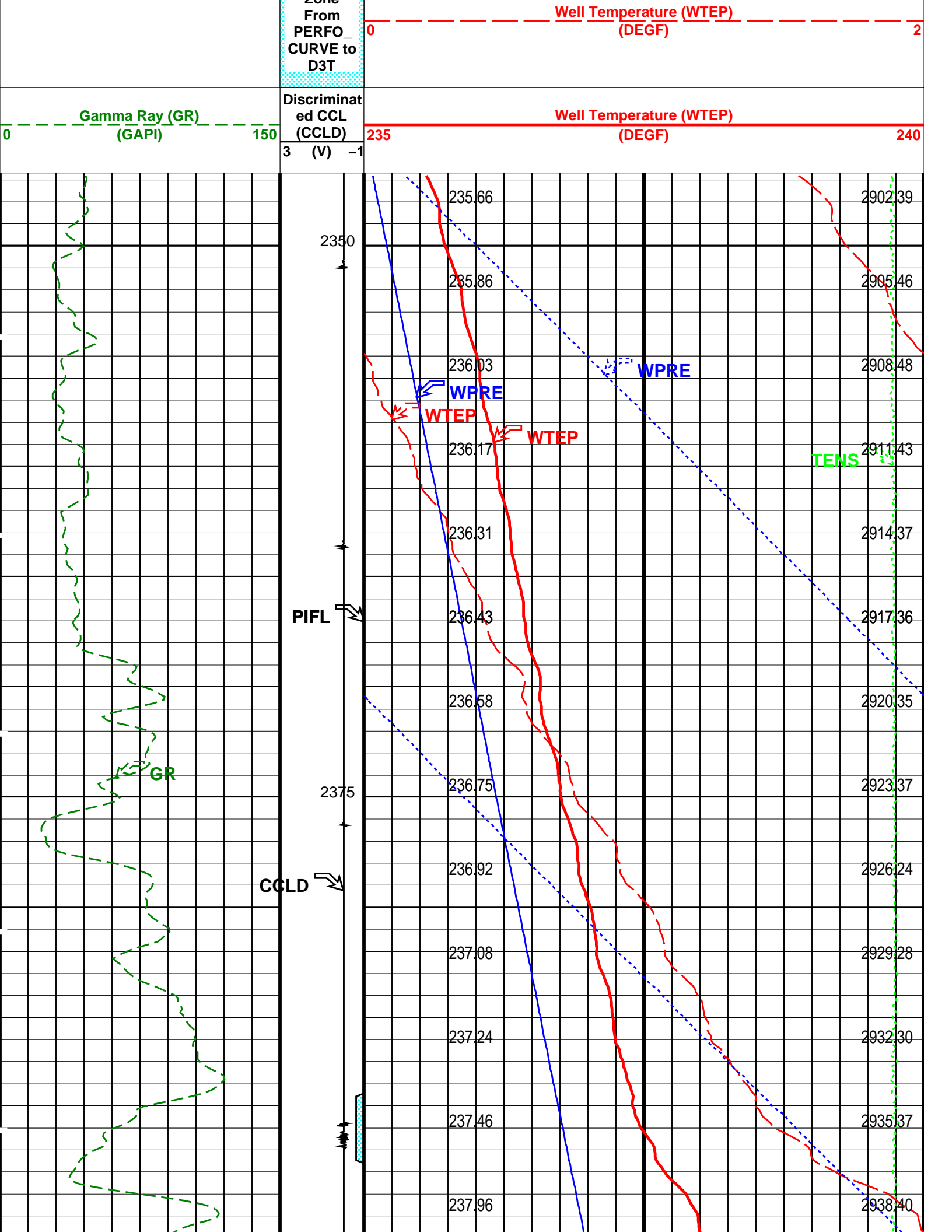


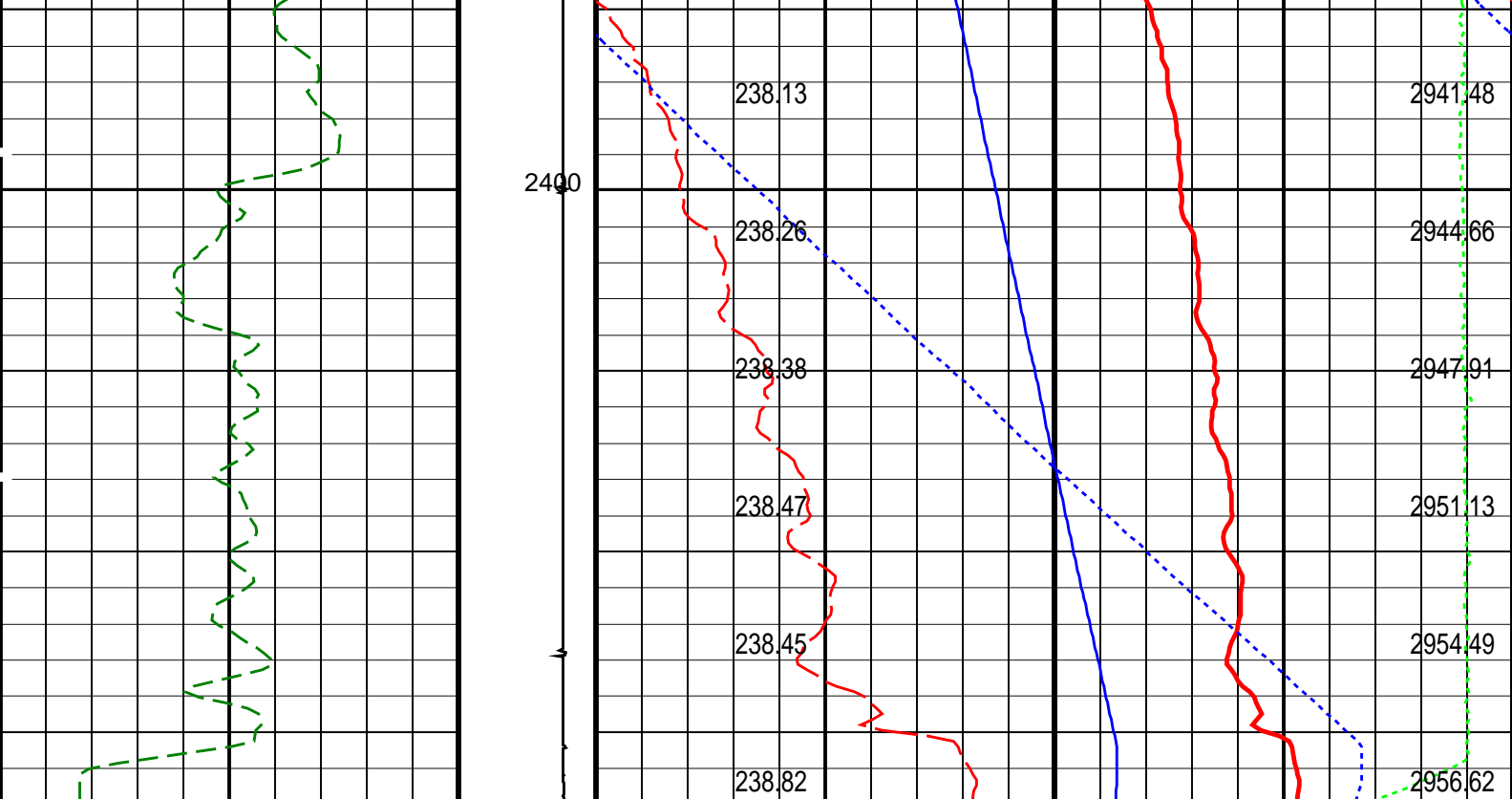
PIP SUMMARY

Time Mark Every 60 S

Casing Collars

Parameters		
DLIS Name	Description	Value
CCL-L: Casing Collar Locator		
CCLD	CCL reset delay	12 IN
CCLT	CCL Detection Level	0.3 V





Gamma Ray (GR) (GAPI)		Discriminat ed CCL (CCLD)	Well Temperature (WTEP)		
0	150	3 (V) -1	235	240	
		Perfo Zone From PERFO_ CURVE to D3T	Well Temperature (WTEP)		
			0	2	
			Well Temperature (WTEP) (DEGF)	Tension (TENS)	
				0	2000
			Well Pressure (WPRE)		
			2900	3000	
			Amplified Well Pressure (WPRE)		
			0	20	
			Well Pressure (WPRE) (PSIA)		

PIP SUMMARY

Time Mark Every 60 S

Format: PSP_1 Vertical Scale: 1:200 Graphics File Created: 19-Oct-2006 10:21

OP System Version: 14C0-302

MCM

PSPT-A/B 14C0-302

Parameters		
DLIS Name	Description	Value
DO PP	System and Miscellaneous Depth Offset for Playback Playback Processing	3.0 M NORMAL

Input DLIS Files

DEFAULT	PSP_019LUP	FN:18	PRODUCER	19-Oct-2006 09:52	2413.9 M	2343.1 M
Output DLIS Files						
DEFAULT	PSP_022PUP	FN:21	PRODUCER	19-Oct-2006 10:21		

Company: **Esso Australia Ltd.**

Schlumberger

Well: **B-16**

Field: **Bream B**

Rig : **Prod4**

Country: **Australia**

7" HPI PSP Plug

2 1/8" Phased Powerjet

MWPT Perforation