

Company: Esso Australia Ltd.

Well: B-14

Field: Bream B

Rig : Prod4 Country: Australia

2 1/8" Phased Powerjet
WPP Perforation
7" HPI PSP Plug

Prod4

Rig :

Field:

Location:

Well:

Company:

Bream B

Gippsland

B-14

Esso Australia Ltd.

LOCATION

Gippsland

Basin

Bass Strait

Elev.: K.B.

G.L. -61 m

D.F. 47.1 m

Permanent Datum:

M.S.L.

Log Measured From:

D.F.

Drilling Measured From:

D.F.

Elev.: 0 m

47.1 m

above Perm. Datum

State:

Victoria

Max. Well Deviation

32 deg

Longitude

147 50'16.81"E

Latitude

038 31'10.90"S

Logging Date			3-Oct-2006					
Run Number			One					
Depth Driller			2168 m					
Schlumberger Depth			2168 m					
Bottom Log Interval			2168 m					
Top Log Interval			2100 m					
Casing Fluid Type			Production Fluids					
Salinity								
Density								
Fluid Level								
BIT/CASING/TUBING STRING								
Bit Size			8.500 in					
From								
To								
Casing/Tubing Size			7.000 in					
Weight			29 lbm/ft					
Grade			LT&C					
From			20 m					
To			2284.44 m					
Maximum Recorded Temperatures			215 degf					
Logger On Bottom		Time	3-Oct-2006		13:00			
Unit Number		Location	889		Prod4 / Ausl			
Recorded By		G Wright						
Witnessed By		G Rimmer						

				Run 1
Oil Density				
Water Salinity				
Gas Gravity				
Bo				
Bw				
1/Bq				
Bubble Point Pressure				
Bubble Point Temperature				
Solution GOR				
Maximum Deviation				32 deg
CEMENTING DATA				
Primary/Squeeze				Primary
Casing String No				
Lead Cement Type				
Volume				
Density				
Water Loss				
Additives				
Tail Cement Type				
Volume				
Density				
Water Loss				
Additives				
Expected Cement Top				
Logging Date				
Run Number				
Depth Driller				
Schlumberger Depth				
Bottom Log Interval				
Top Log Interval				
Casing Fluid Type				
Salinity				
Density				
Fluid Level				
BIT/CASING/TUBING STRING				
Bit Size				
From				
To				
Casing/Tubing Size				
Weight				
Grade				
From				
To				
Maximum Recorded Temperatures				
Logger On Bottom		Time		
Unit Number		Location		
Recorded By				
Witnessed By				

DEPTH SUMMARY LISTING

Depth System Equipment

Date Created: 01-Oct-2006 12:10:45

Depth Measuring Device

Type: IDW-EB
Serial Number: 6373
Calibration Date: 28-SEP-2006
Calibrator Serial Number: 1009
Calibration Cable Type: 2-32ZT
Wheel Correction 1: -2
Wheel Correction 2: -2

Tension Device

Type: CMTD-B/A
Serial Number: 949
Calibration Date: 28-SEP-2006
Calibrator Serial Number: 1174
Calibration Gain: 1.01
Calibration Offset: 195.00

Logging Cable

Type: 2-32ZT
Serial Number: 24425
Length: 6700.11 M
Conveyance Method: Wireline
Rig Type: Offshore_Fixed

Depth Control Parameters

Log Sequence: Subsequent Log In the Well
Reference Log Name: Solar composite.
Reference Log Run Number: 1
Reference Log Date:

Depth Control Remarks

1. Correlated to Solar composite log supplied with program.
2. IDW-EB 6373 used as primary depth control.
3. Z-chart used as back-up.
- 4.
- 5.
- 6.

DISCLAIMER

THE USE OF AND RELIANCE UPON THIS RECORDED-DATA BY THE HEREIN NAMED COMPANY (AND ANY OF ITS AFFILIATES, PARTNERS, REPRESENTATIVES, AGENTS, CONSULTANTS AND EMPLOYEES) IS SUBJECT TO THE TERMS AND CONDITIONS AGREED UPON BETWEEN SCHLUMBERGER AND THE COMPANY, INCLUDING: (a) RESTRICTIONS ON USE OF THE RECORDED-DATA; (b) DISCLAIMERS AND WAIVERS OF WARRANTIES AND REPRESENTATIONS REGARDING COMPANY'S USE OF AND RELIANCE UPON THE RECORDED-DATA; AND (c) CUSTOMER'S FULL AND SOLE RESPONSIBILITY FOR ANY INFERENCE DRAWN OR DECISION MADE IN CONNECTION WITH THE USE OF THIS RECORDED-DATA.

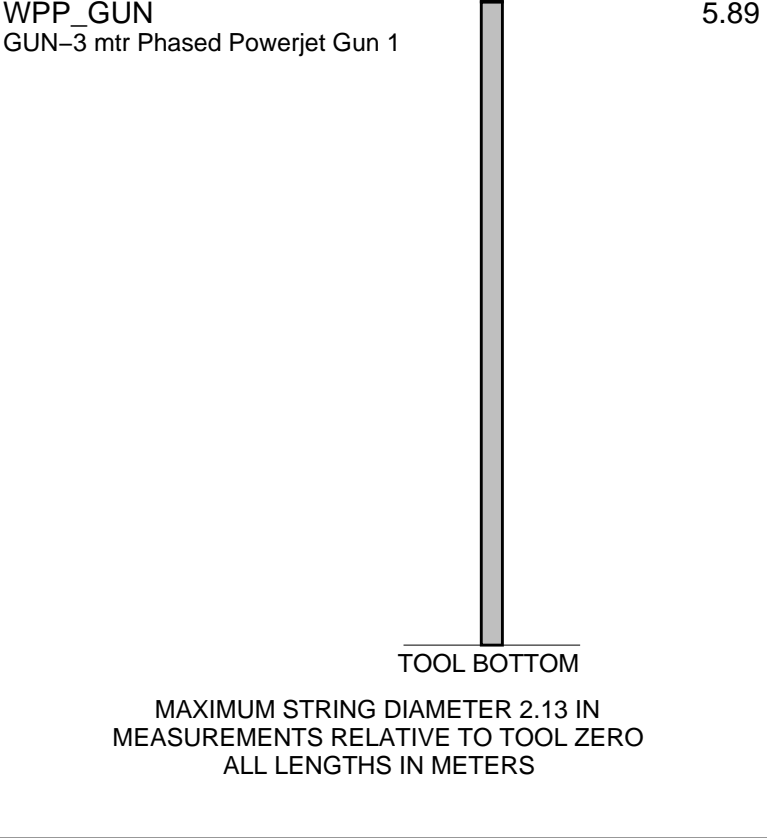
OTHER SERVICES1
OS1: None

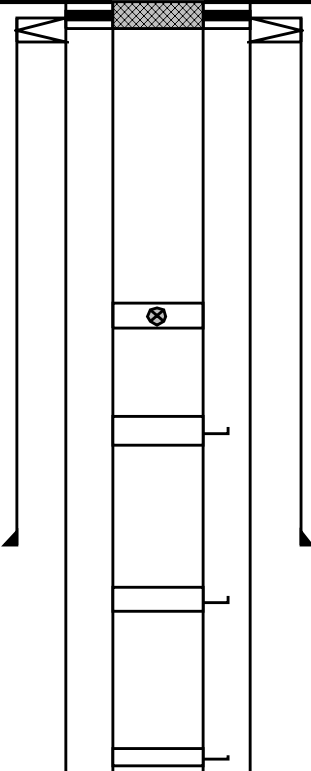
REMARKS: RUN NUMBER 1

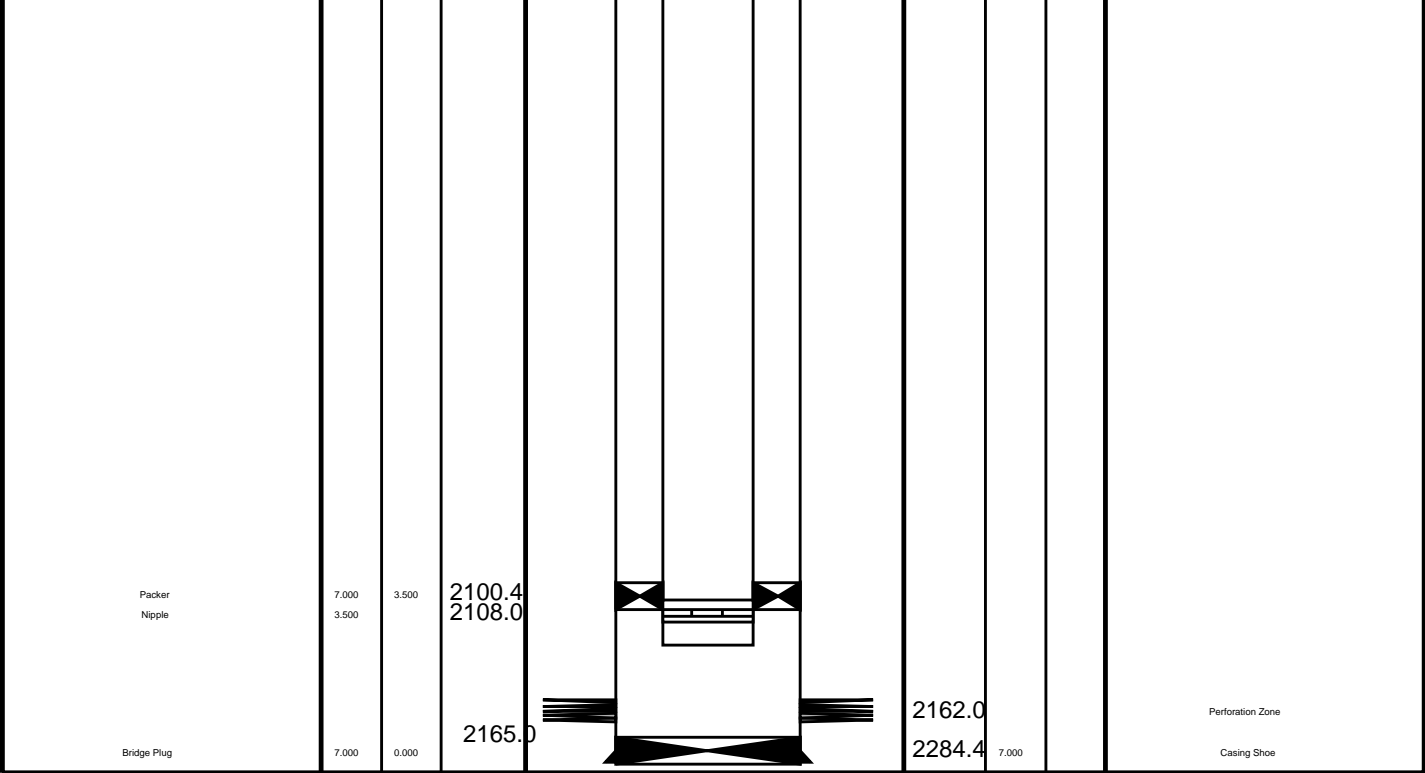
Log correlated to ExxonMobil composite supplied with program.
Maximum well deviation 32 degrees at 154.4m MDKB.
Perforated interval was 2162m to 2165m MDKB, 2 1/8" 6spf,
45 degree phased Powerjet with WPP used for this perforation.
SBHP = 2560 psia, SBHT = 215 degf.
No underbalance achieved as no gas lift available.
Run two was a 2 1/8" dummy plug run to HUD @ 2168.3m MDKB
Run three 7" HPI PSP plug set at 2165m MDKB top of plug.

Crew : Jake Annear & Andy Hall.

DOWNHOLE EQUIPMENT					
AH-SWBS-B 762 AH-SWBS-B					13.72
AH-SWBS-B 731 AH-SWBS-B 731					13.04
MH-SWHS-A 726	Detail MT				12.35
	TelStatus				
AH-AH-295 5001	CTEM				12.02
	TILT				
WPTET-AA 017	WPTC Aux. HV				11.84
PSC-A 3753	TCUAB				
WPTEH-AA 17	PTUAB GR CCL				
WPTC-A 17	WPST ACC				
WPTEC 17	WPST UAB				
	WPST Sens				
	SHM Monit				
	Tension				
WPGRT-A 718					10.04
WPGRH-A 9					
WPGRC-A 718					
WPPTT-AA/BA 009					9.02
BH-3-SALE1 1					
WPPTH-AA 9					
Ruggedized_Paine_Gauge 213220					
WPPTC 3810					
WPST-AB 019					7.71
WPSH-AA 19					
WPSC 3810					
AH-WPP X-OVER 1					6.67
MPD-MB 268					6.43
MPD-MB 268					



Production String	(in)		(m)	Well Schematic	(m)	(in)		Casing String
	OD	ID	MD		MD	OD	ID	
Tubing Hanger Tubing	7.000 3.500	3.500	19.0 20.1		20.0 20.0	7.000 10.750	7.000	Casing String Liner Hanger
Shut-in Valve	3.500		450.0					
Gas Lift Mandrel	3.500		545.0					
Gas Lift Mandrel	3.500		822.0		699.4	10.750		Casing Shoe
Gas Lift Mandrel	3.500		1070.0					



Schlumberger Job Event Summary

Time	Elapsed Time	Depth (M)	File
Simulated Log	4-Oct-2006 12:35	000:07	PERFO_026LUP
Simulated Log	4-Oct-2006 13:29	000:03	PERFO_027LDP
Log Pass (down)	4-Oct-2006 13:33	000:19	159.1 - 2092.8 PERFO_028LDP
Log Pass (down)	4-Oct-2006 13:52	000:02	2092.9 - 2123.1 PERFO_029LDP
Log Pass (down)	4-Oct-2006 13:55	000:05	2096.6 - 2157.5 PERFO_030LDP
Log Pass (down)	4-Oct-2006 14:08	000:03	2136.5 - 2154.8 PERFO_031LDP
Log Pass (down)	4-Oct-2006 14:11	000:05	2144.4 - 2153.9 PERFO_032LDP
Log Pass (down)	4-Oct-2006 14:16	000:13	2147.3 - 2154.9 PERFO_033LDP
Log Pass (up)	4-Oct-2006 14:29	000:04	2154.9 - 2094.3 PERFO_034LUP



Plug Setting Pass
7"HPI PSP

Input DLIS Files

DEFAULT	Flip_PERFO_035LUP	PRODUCER	04-Oct-2006 14:39	2157.5 M	2096.6 M
---------	-------------------	----------	-------------------	----------	----------

Output DLIS Files

DEFAULT	PERFO_036PUP	FN:34	PRODUCER	04-Oct-2006 14:39	2157.5 M	2097.0 M
---------	--------------	-------	----------	-------------------	----------	----------

OP System Version: 14C0-302

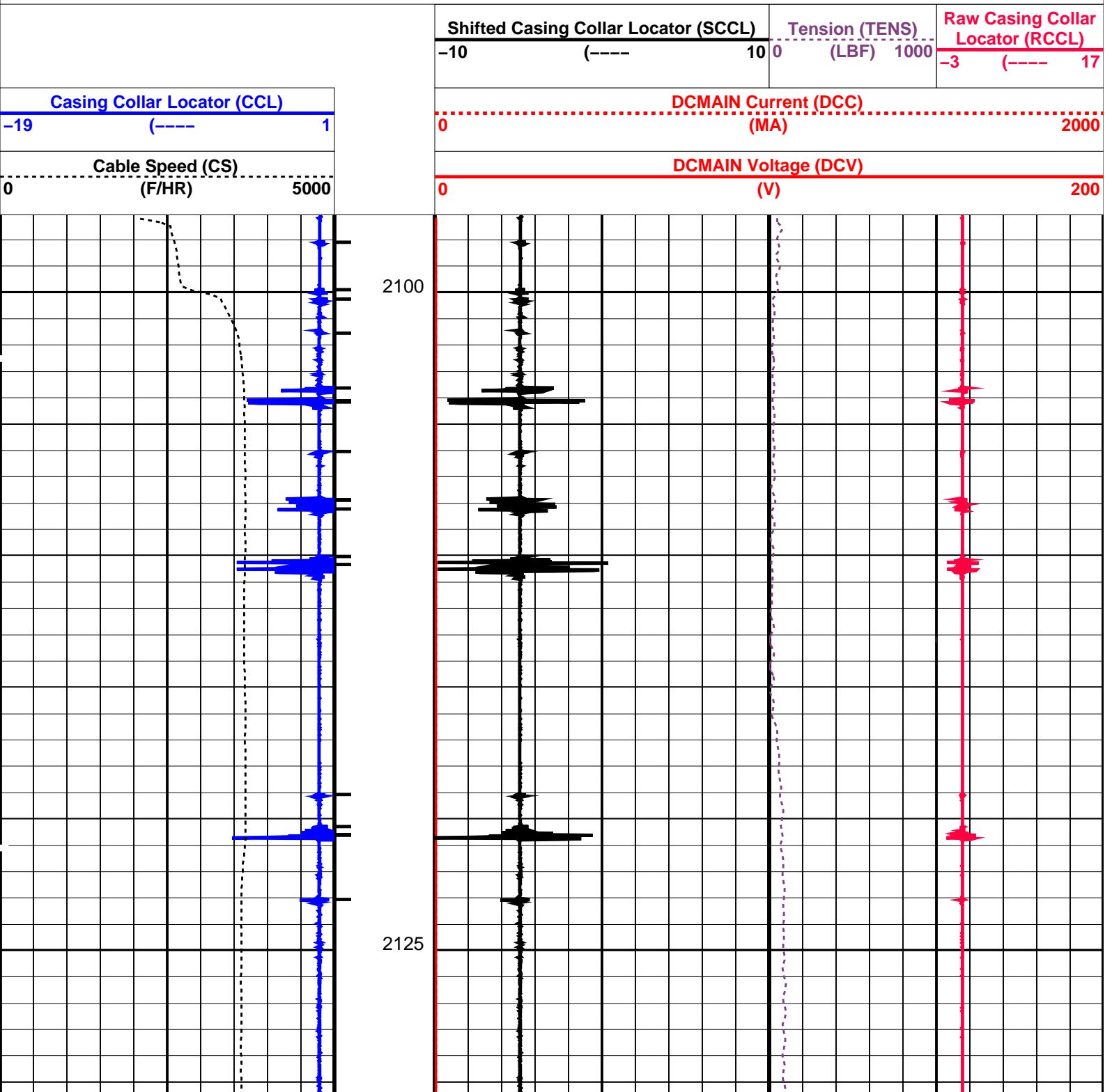
MCM

SHM_GUN SRC-3220-WPP-AAP5 CCL-L 14C0-302

PIP SUMMARY

└ Casing Collars

Time Mark Every 60 S





Dummy Plug Pass

MAXIS Field Log

Input DLIS Files

DEFAULT

PSP_023LUP

FN:22

PRODUCER

04-Oct-2006 11:27

2175.1 M

2096.0 M

Output DLIS Files

DEFAULT

PSP_024PUP

FN:23

PRODUCER

04-Oct-2006 11:39

2170.6 M

2092.0 M

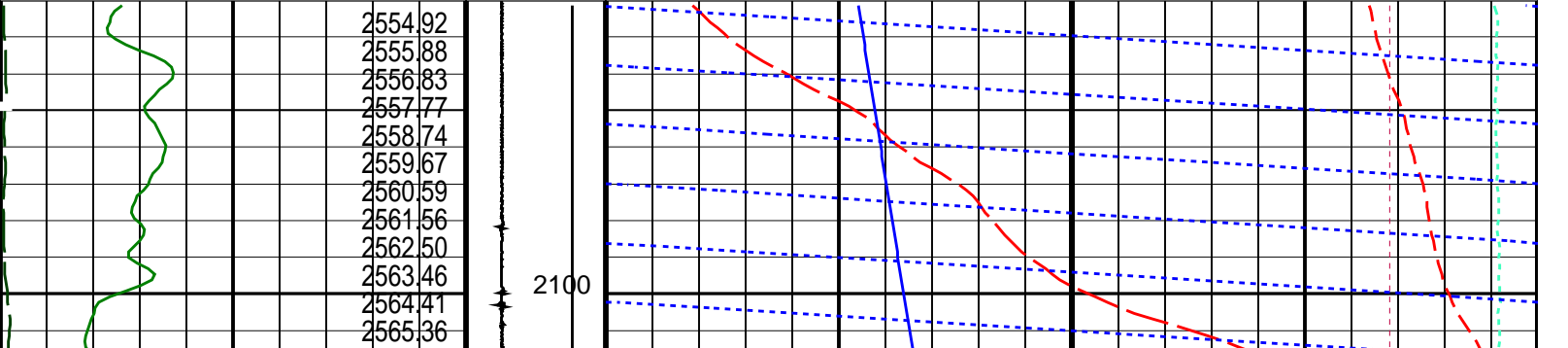
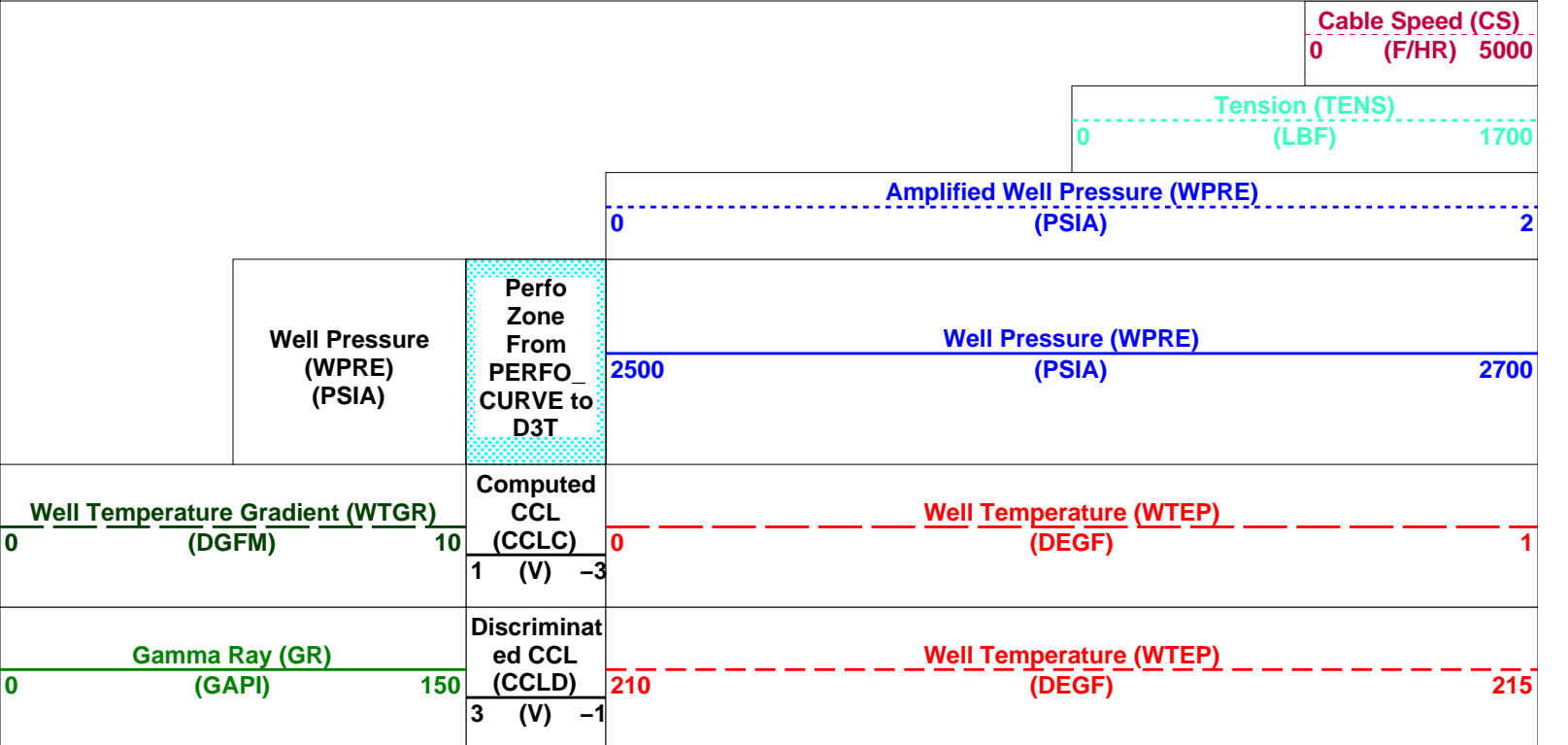
OP System Version: 14C0-302
MCM

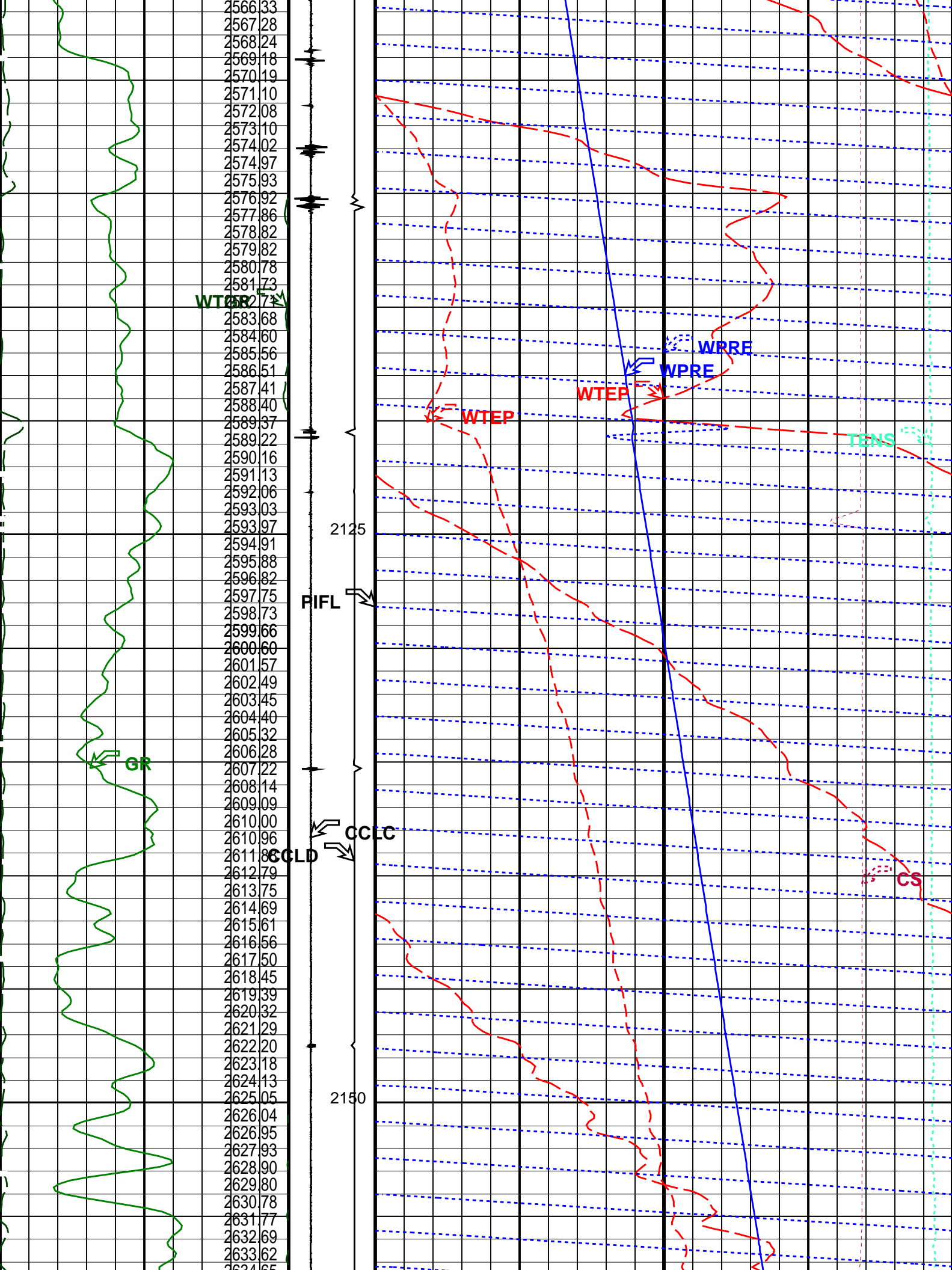
PSPT-A/B

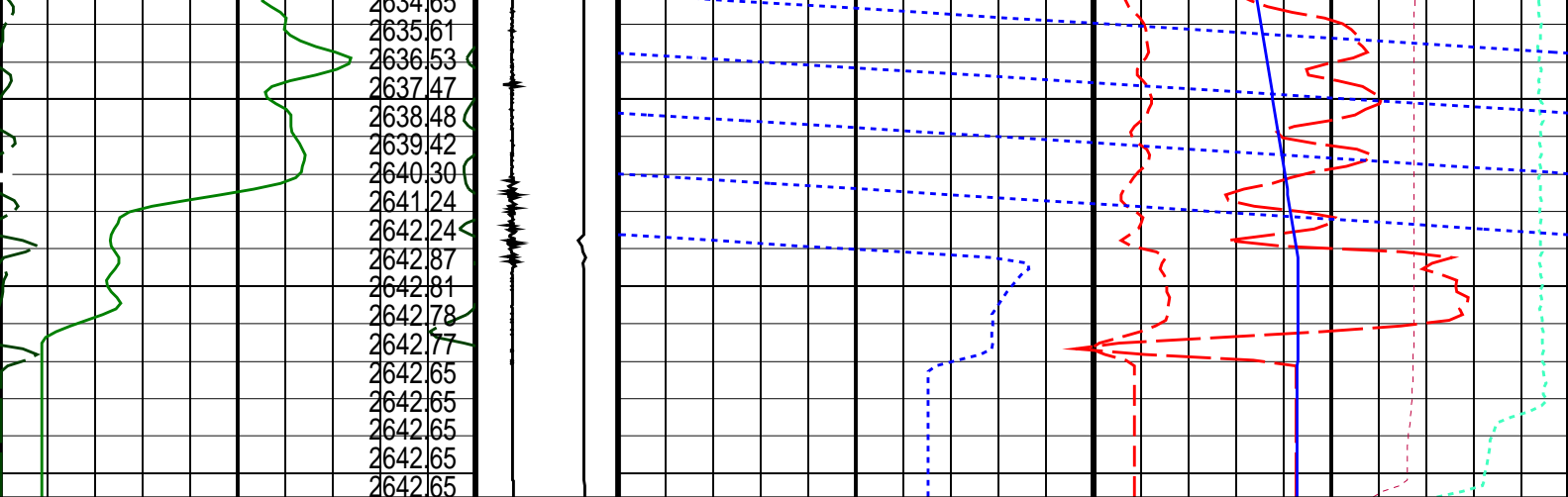
14C0-302

PIP SUMMARY

Time Mark Every 60 S







Gamma Ray (GR) (GAPI)		Discriminat ed CCL (CCLD)	Well Temperature (WTEP) (DEGF)	
0	150	3 (V) -1	210	215
Well Temperature Gradient (WTGR) (DGFM)		Computed CCL (CCLC)	Well Temperature (WTEP) (DEGF)	
0	10	1 (V) -3	0	1
	Well Pressure (WPRE) (PSIA)	Perfo Zone From PERFO_ CURVE to D3T	Well Pressure (WPRESS) (PSIA)	
			2500	2700
			Amplified Well Pressure (WPRESS) (PSIA)	
			0	2
			Tension (TENS) (LBF)	
			0	1700
			Cable Speed (CS) (F/HR)	
			0	5000

PIP SUMMARY

Time Mark Every 60 S

Format: PSP_1 Vertical Scale: 1:200 Graphics File Created: 04-Oct-2006 11:39

OP System Version: 14C0-302
MCM

PSPT-A/B 14C0-302

Parameters		
DLIS Name	Description	Value
DO PP	System and Miscellaneous Depth Offset for Playback Playback Processing	-4.4 M NORMAL

Input DLIS Files					
DEFAULT	PSP_023LUP	FN:22	PRODUCER	04-Oct-2006 11:27	2175.1 M 2096.0 M
Output DLIS Files					
DEFAULT	PSP_024PUP	FN:23	PRODUCER	04-Oct-2006 11:39	

Time	Elapsed Time	Depth (M)	File
Log Pass (down)	3-Oct-2006 12:48 000:16	1310.0 – 2166.2	PERFO_Perfo_WPGRT_010LDP
Log Pass (up)	3-Oct-2006 13:04 000:05	2166.1 – 2122.8	PERFO_Perfo_WPGRT_011LUP
Log Pass (up)	3-Oct-2006 13:17 000:06	2159.1 – 2102.4	PERFO_Perfo_WPGRT_012LUP
Log Pass (down)	3-Oct-2006 13:29 000:05	2102.7 – 2159.2	PERFO_Perfo_WPGRT_014LDP
Log Pass (up)	3-Oct-2006 13:34 000:15	2159.2 – 2112.9	PERFO_Perfo_WPGRT_015LUP
Station Log	3-Oct-2006 13:36 000:06	2155.3 – 0.8	PERFO_Perfo_WPGRT_016LTP

Schlumberger

GUN # 1
2162m to 2165m MDKB

MAXIS Field Log

Company: Esso Australia Ltd. Well: B-14

Output DLIS Files

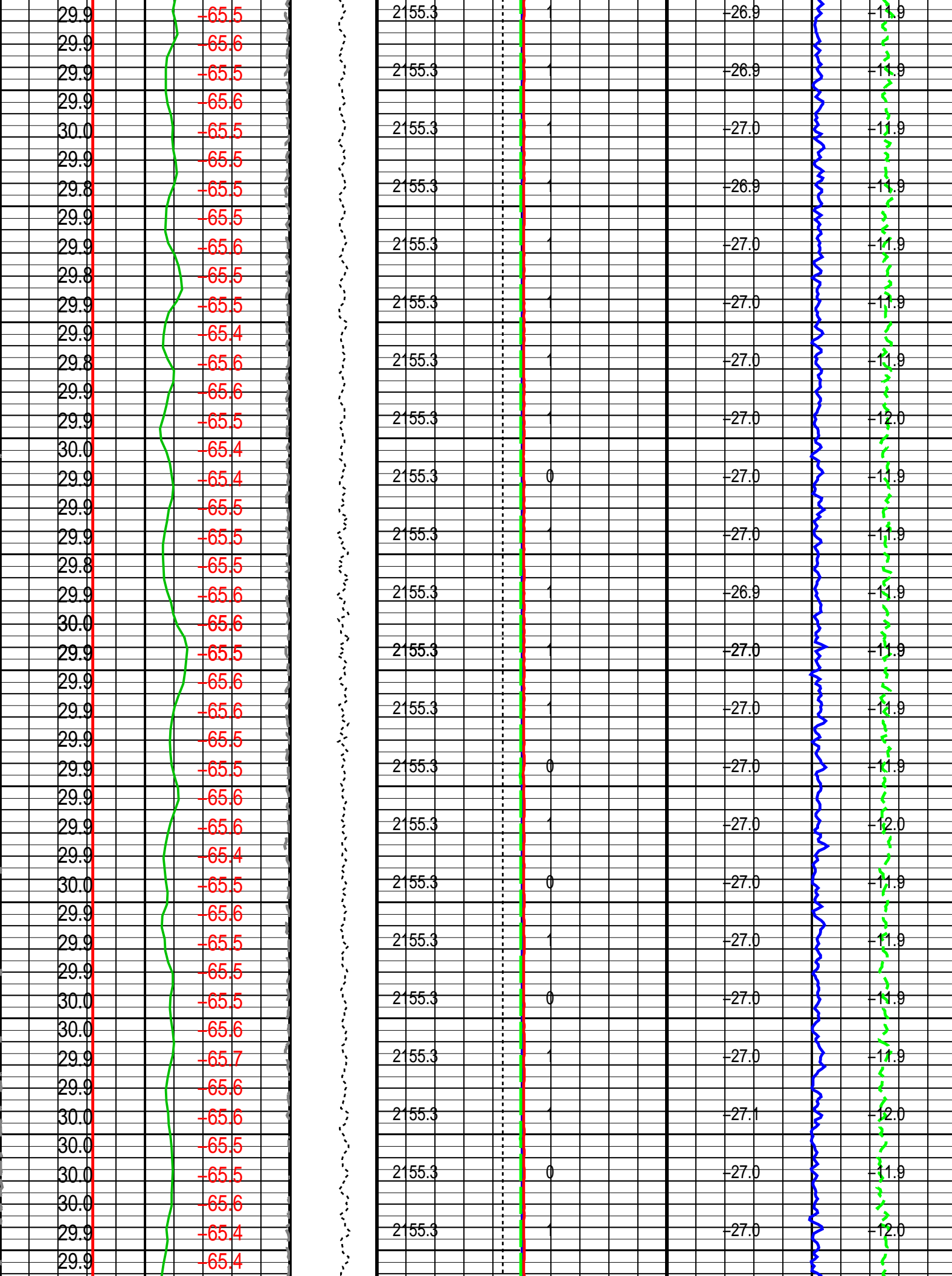
DEFAULT PERFO_Perfo_WPGRT_016LTP FN:15 PRODUCER 03-Oct-2006 13:36 2155.3 M 0.8 M

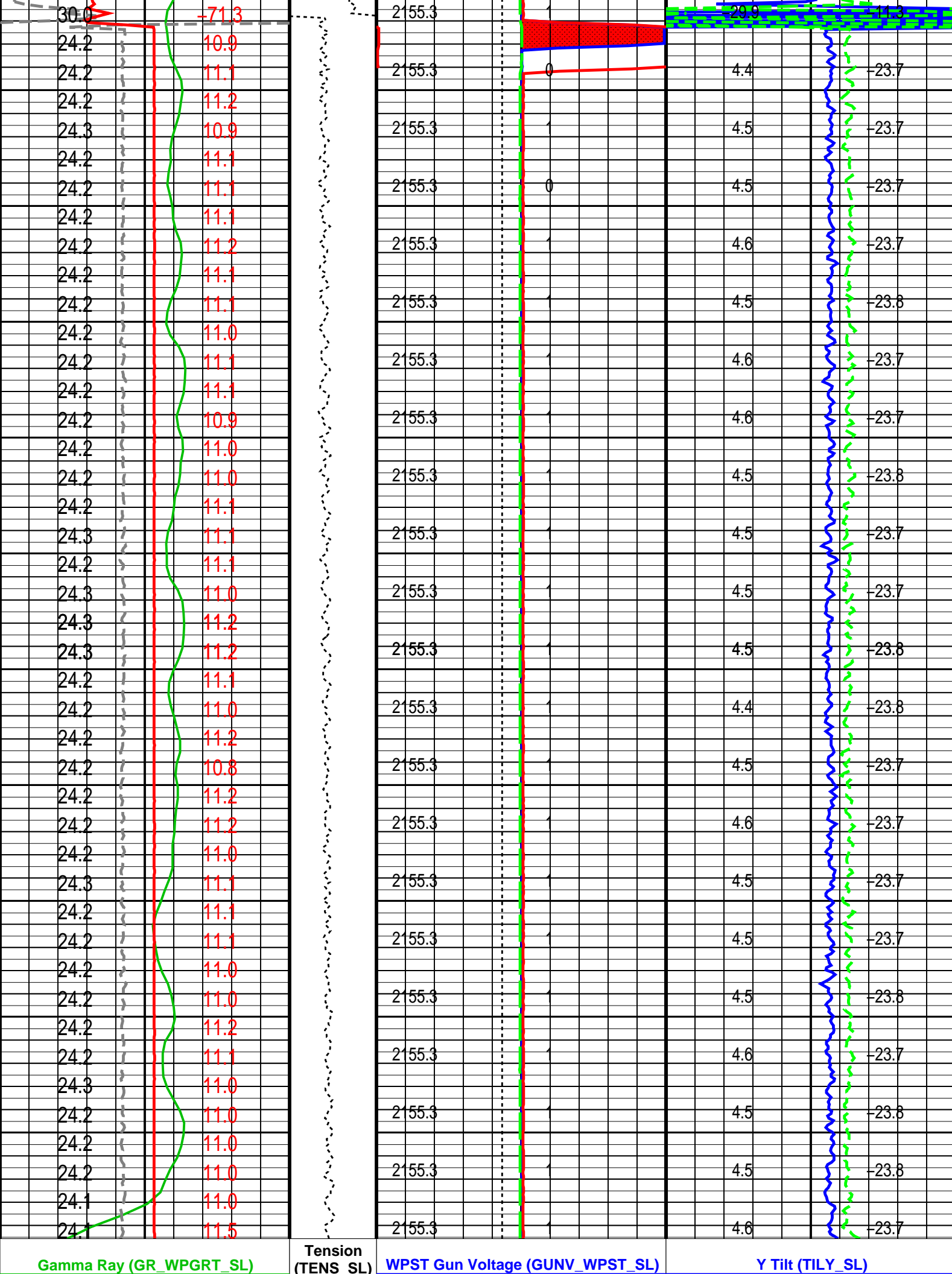
OP System Version: 14C0-302

MCM

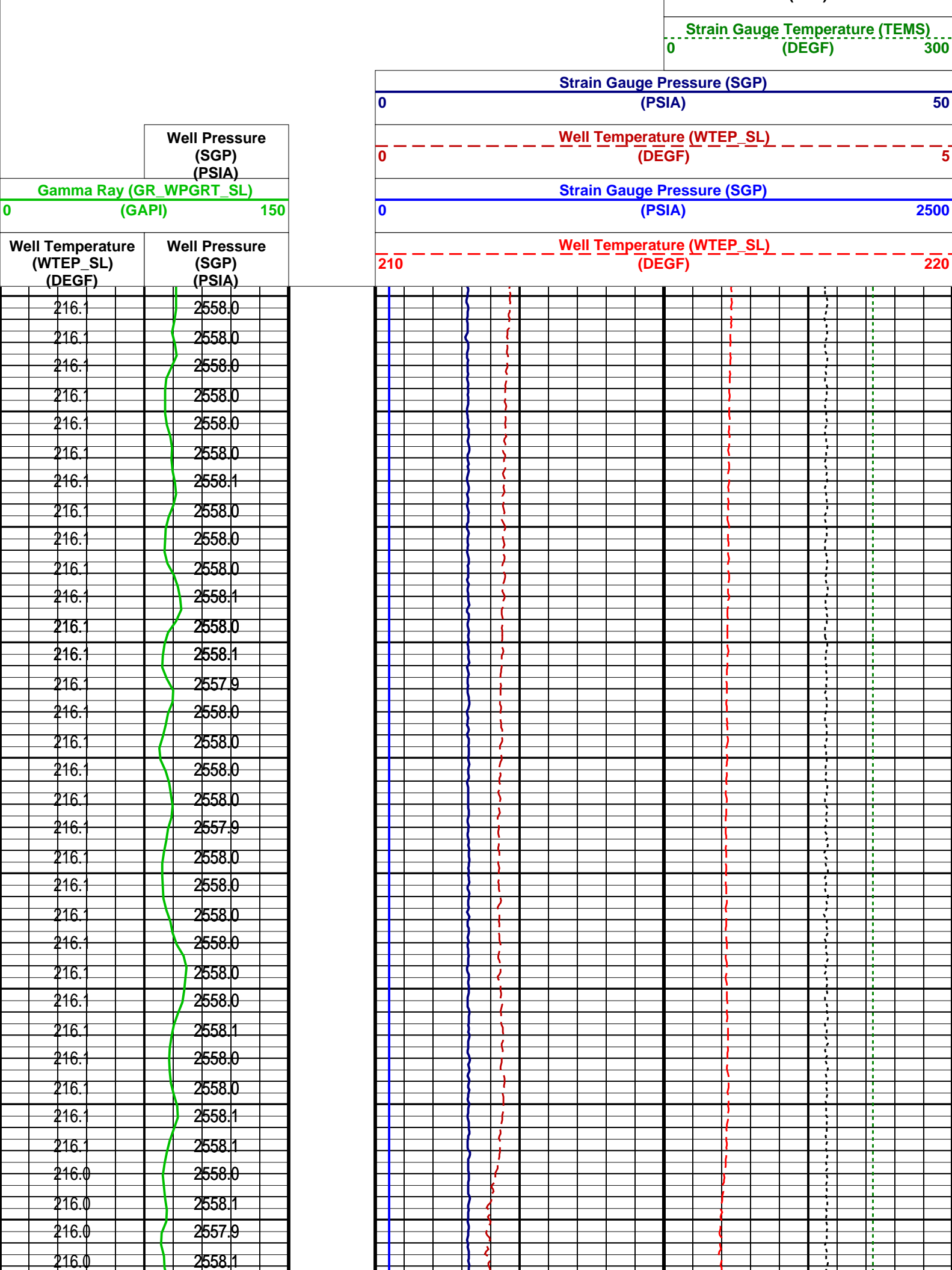
WPP_GUN SRC-3220-WPP-AAP5 WPST-AB SRC-3220-WPP-AAP5
 WPPTT-AA/BA SRC-3220-WPP-AAP5 WPGRT-A 14C0-302
 WPTET-AA SRC-3220-WPP-AAP5

		<div>Shoot Negative From GUNV to LHT2</div>		<div>Shoot Positive From RHT2 to GUNV</div>			
		Charge Negative From HVNC to LHT2		Charge Positive From RHT2 to HVPC			
		Alpha DEPTH (DEPT_SL) (M)		Alpha GUNV (GUNV_WPST_SL) (V)			
<div>Sonde/Hole Inclination (SDEV_SL) (DEG)</div>		<div>Relative Bearing (RB_SL) (DEG)</div>		Depth (DEPT_SL) (M)			
		0				10000	
<div>Relative Bearing (RB_SL) (DEG)</div>		<div>WPST Negative Charge Voltage (HVNC_WPST_SL) (V)</div>		<div>Alpha X (TILX_SL) (DEG)</div>		<div>Alpha Y (TILY_SL) (DEG)</div>	
-180180		-520520					
<div>Sonde/Hole Inclination (SDEV_SL) (DEG)</div>		<div>WPST Positive Charge Voltage (HVPC_WPST_SL) (V)</div>		<div>X Tilt (TILX_SL) (DEG)</div>			
010		-520520		-22			
<div>Gamma Ray (GR_WPGRT_SL) (GAPI)</div>		<div>WPST Gun Voltage (GUNV_WPST_SL) (V)</div>		<div>Y Tilt (TILY_SL) (DEG)</div>			
0150		-520520		-22			
<div>Tension (TENS_SL) (LBF)</div>							
0100							
29.9							
-65.5							



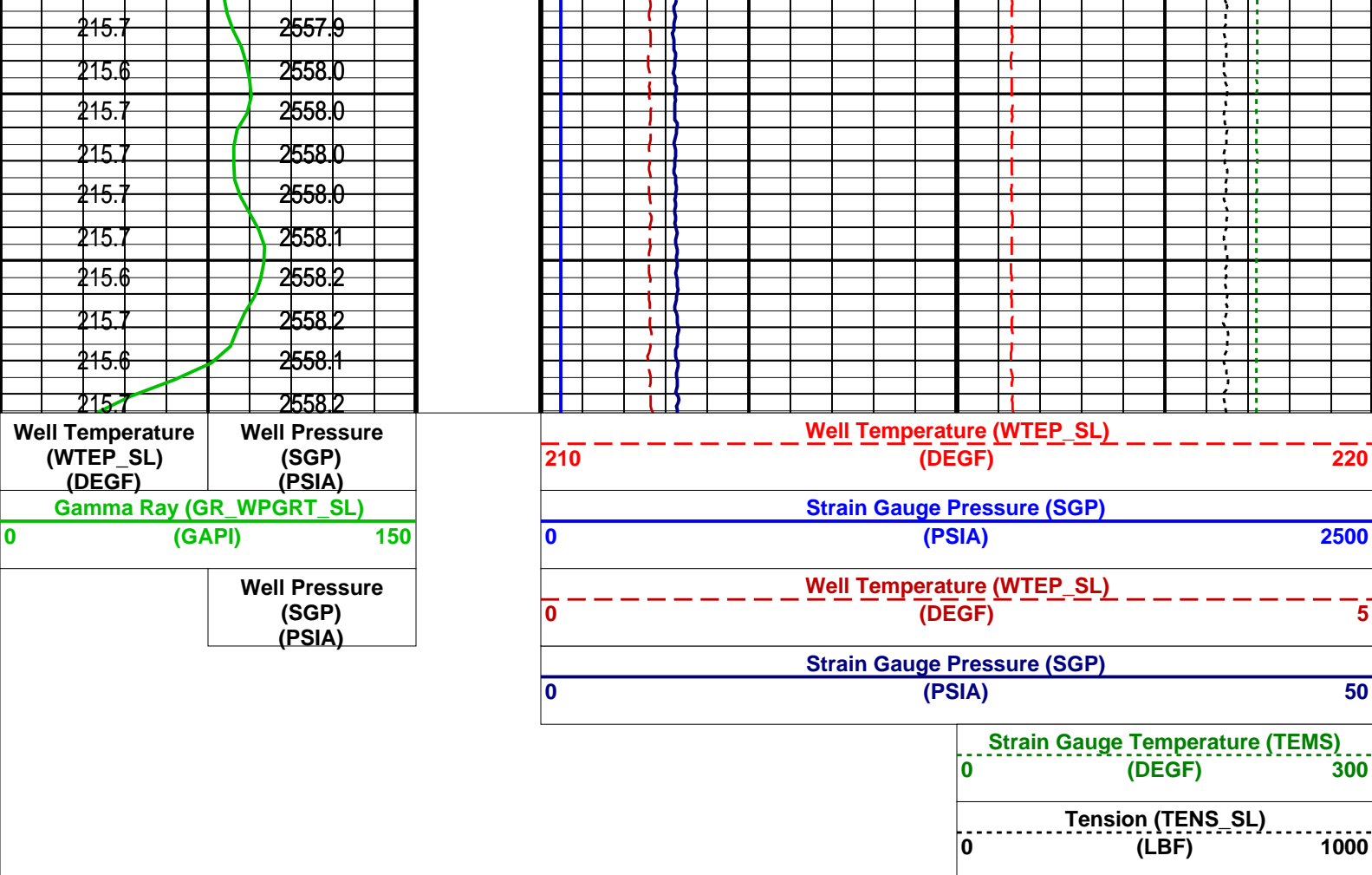


	Tension (TENS_SL)
	0 (LBF) 1000



216.0	2558.1
215.9	2558.0
215.9	2558.0
215.9	2558.1
215.9	2558.0
215.9	2558.1
215.9	2558.0
215.9	2558.0
215.9	2558.0
215.9	2558.1
215.9	2558.1
215.8	2558.0
215.8	2558.0
215.7	2558.0
215.7	2558.0
215.7	2557.9
215.7	2558.0
215.7	2557.9
215.7	2558.0
215.7	2558.0
215.7	2558.0
215.7	2557.9
215.7	2558.1
215.7	2558.0
215.7	2558.0
215.7	2558.0
215.7	2558.0
215.7	2558.1
215.7	2558.1
215.7	2557.9
215.7	2558.0
215.7	2558.0
215.7	2558.0
215.7	2558.0
215.7	2557.9
215.6	2558.0
215.6	2558.0
215.6	2558.0
215.6	2558.0
215.6	2558.1
215.6	2558.0
215.6	2558.1
215.6	2558.1
215.6	2558.3

215.6	2558.1
215.6	2558.3
215.6	2558.3
215.6	2558.2
215.6	2558.1
215.6	2558.1
215.6	2558.2
215.6	2558.1
215.6	2558.1
215.6	2558.0
215.6	2557.5
215.6	2563.6
215.6	2557.8
215.6	2557.8
215.6	2557.8
215.6	2557.8
215.6	2557.8
215.6	2557.7
215.6	2557.7
215.6	2557.8
215.6	2557.9
215.6	2557.8
215.6	2557.7
215.6	2557.8
215.6	2557.9
215.6	2557.8
215.6	2557.8
215.6	2557.8
215.6	2557.8
215.7	2557.9
215.6	2557.9
215.6	2557.8
215.6	2557.8
215.6	2557.8
215.6	2557.9
215.6	2558.0
215.6	2557.9
215.7	2557.9
215.6	2558.0
215.6	2557.9
215.6	2557.9
215.7	2557.9
215.6	2558.0
215.6	2558.0
215.6	2558.1



Parameters			
DLIS Name		Description	Value
WPST-AB: WPP Shooting Tool			
U-COMM_VOLT		ASFS Comm Voltage	50 V
U-ERSB_ON_TIME		ERSB Voltage Hold Time	180 S
U-SEC_ON_TIME		SECURE Voltage Hold Time	10 S
U-SHOOT_VOLT_LIM		Shooting Voltage Limit	510 V
WPPTT-AA/BA: WPP Pressure Temperature Tool			
ACUP		Constant Update Switch	INIT_STATION_LOG
PCTS		Pressure Correction Temperature Source	TEMS
WPTET-AA: WPP Telemetry Tool			
CCLG		Casing Collar Locator Gain	12DB
CCLT		CCL Detection Level	0.3
U-TILT_X_GAIN		WPTET Tilt X Gain	1
U-TILT_X_OFFSET		WPTET Tilt X Offset	0
U-TILT_Y_GAIN		WPTET Tilt Y Gain	1
U-TILT_Y_OFFSET		WPTET Tilt Y Offset	0

Format: WPP_PT_SL Vertical Scale: 1" per 10S

Graphics File Created: 03-Oct-2006 13:36

OP System Version: 14C0-302

MCM

WPP_GUN	SRC-3220-WPP-AAP5	WPST-AB	SRC-3220-WPP-AAP5
WPPTT-AA/BA	SRC-3220-WPP-AAP5	WPGRT-A	14C0-302
WPTET-AA	SRC-3220-WPP-AAP5		

Output DLIS Files			
DEFAULT	PERFO_Perfo_WPGRT_016LTP	FN:15	PRODUCER 03-Oct-2006 13:36

Company: Esso Australia Ltd.

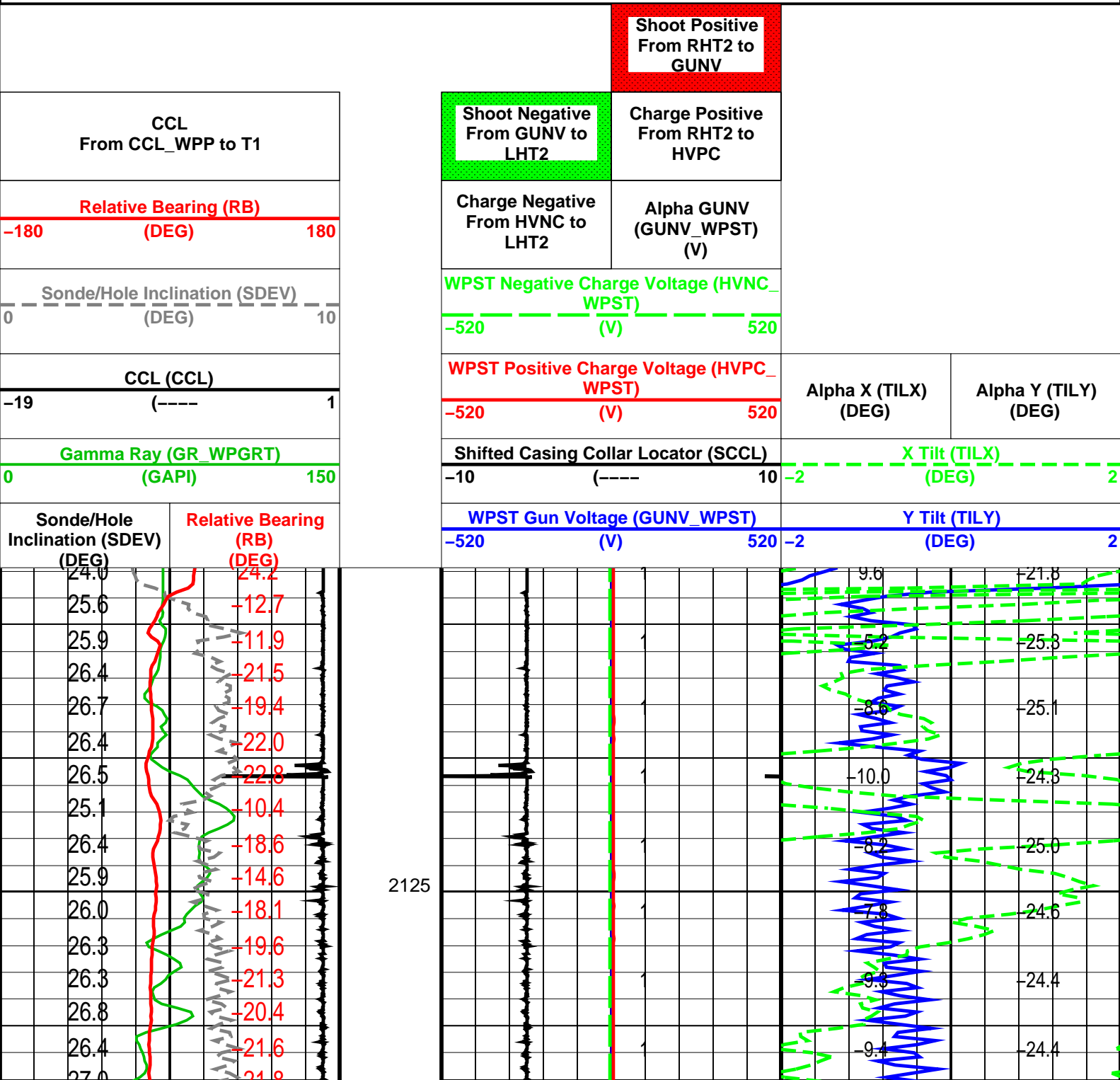
Well: B-14

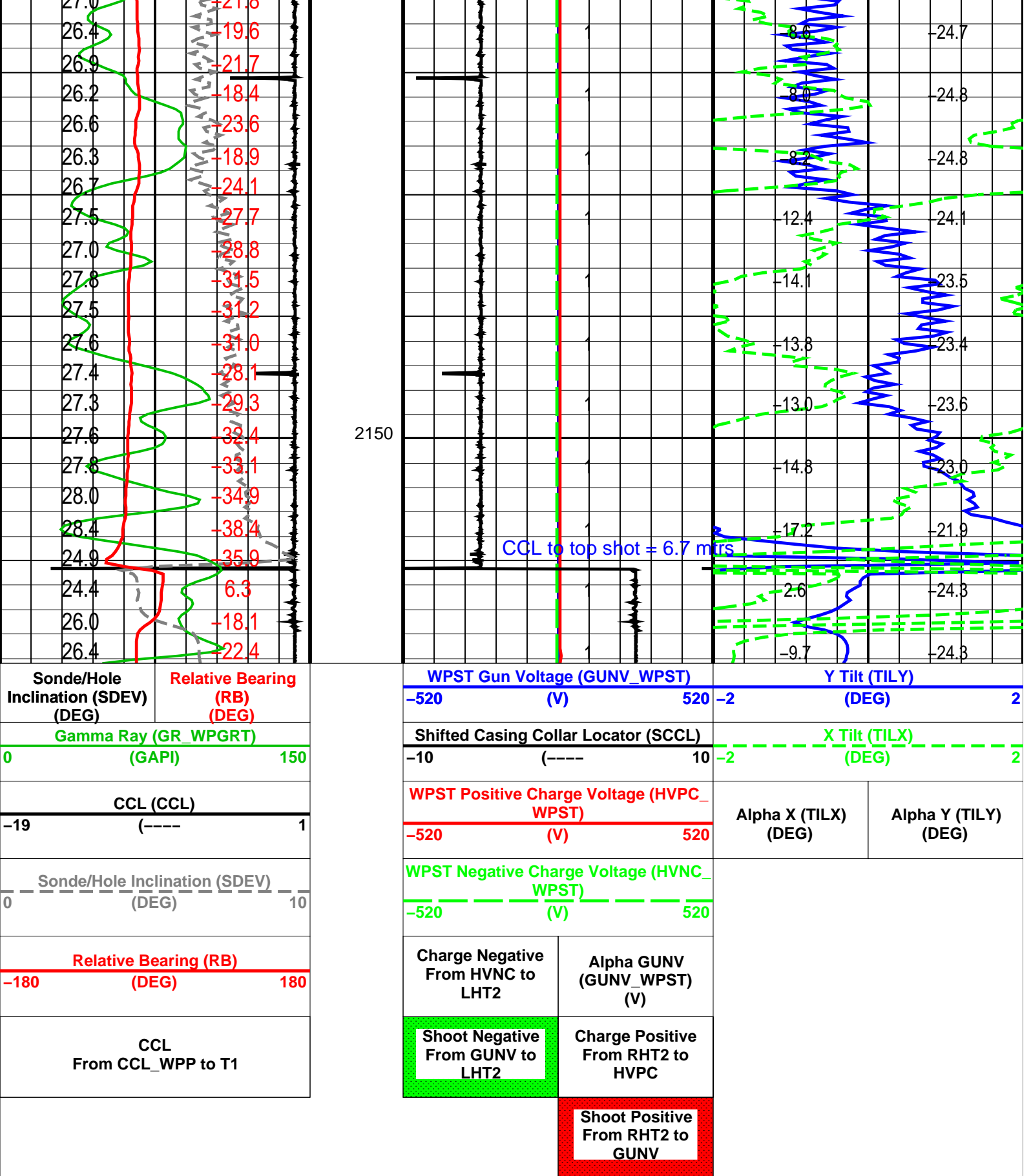
Output DLIS Files

DEFAULT PERFO_Perfo_WPGRT_015LUP FN:14 PRODUCER 03-Oct-2006 13:34 2159.2 M 2112.9 M

OP System Version: 14C0-302
MCM

WPP_GUN SRC-3220-WPP-AAP\$ WPST-AB SRC-3220-WPP-AAP\$
WPPTT-AA/BA SRC-3220-WPP-AAP\$ WPGRT-A 14C0-302
WPTET-AA SRC-3220-WPP-AAP\$





Parameters

DLIS Name	Description	Value
WPST-AB: WPP Shooting Tool		
U-COMM_VOLT	ASFS Comm Voltage	50 V
U-ERSB_ON_TIME	ERSB Voltage Hold Time	180 S
U-SEC_ON_TIME	SECURE Voltage Hold Time	10 S
U-SHOOT_VOLT_LIM	Shooting Voltage Limit	510 V
WPPTT-AA/BA: WPP Pressure Temperature Tool		

Format: WPP_Perfo Vertical Scale: 1:200 Graphics File Created: 03-Oct-2006 13:34

MCM

WPP_GUN	SRC-3220-WPP-AAP5	WPST-AB	SRC-3220-WPP-AAP5
WPPTT-AA/BA	SRC-3220-WPP-AAP5	WPGRT-A	14C0-302
WPTET-AA	SRC-3220-WPP-AAP5		

Output DLIS Files

DEFAULT	PERFO Perfo WPGRT 015LUP	FN:14	PRODUCER	03-Oct-2006 13:34
---------	--------------------------	-------	----------	-------------------

Company: Esso Australia Ltd.

Well: B-14

Output DLIS Files

DEFAULT PERFO Perfo WPGRT 015LUP FN:14 PRODUCER 03-Oct-2006 13:34

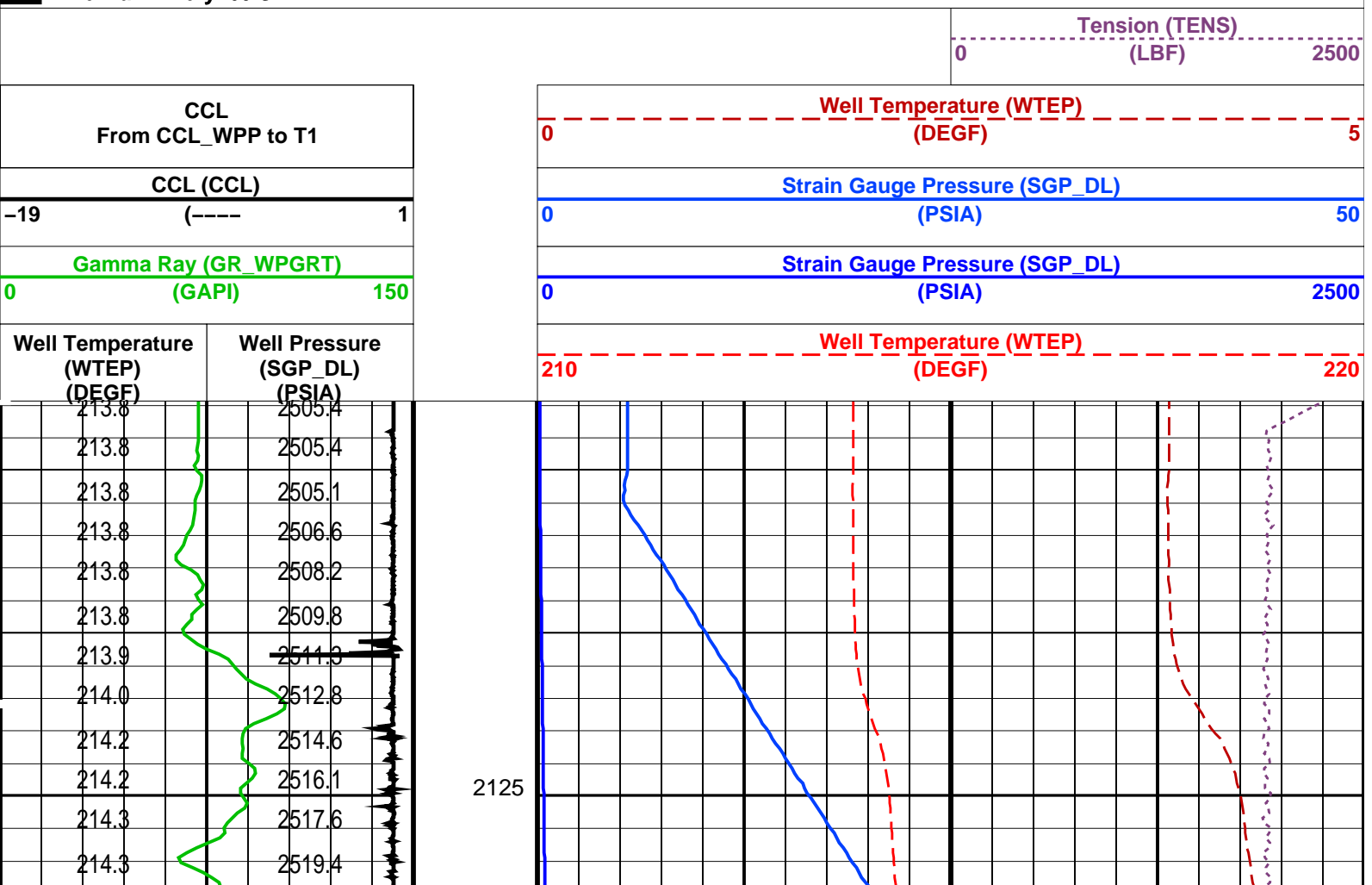
OP System Version: 14C0-302

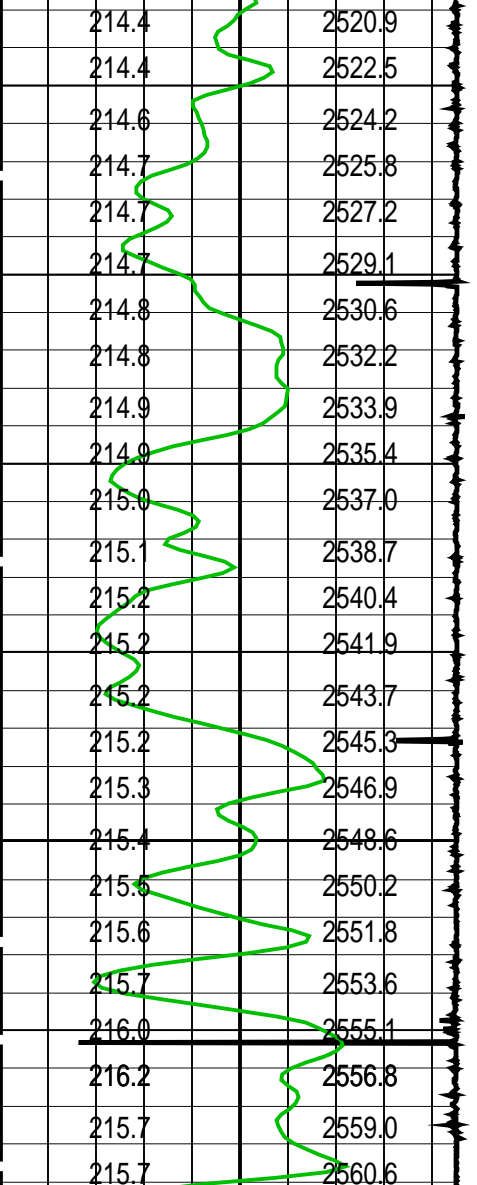
MCM

WPP_GUN	SRC-3220-WPP-AAP5	WPST-AB	SRC-3220-WPP-AAP5
WPPTT-AA/BA	SRC-3220-WPP-AAP5	WPGRT-A	14C0-302
WPTET-AA	SRC-3220-WPP-AAP5		

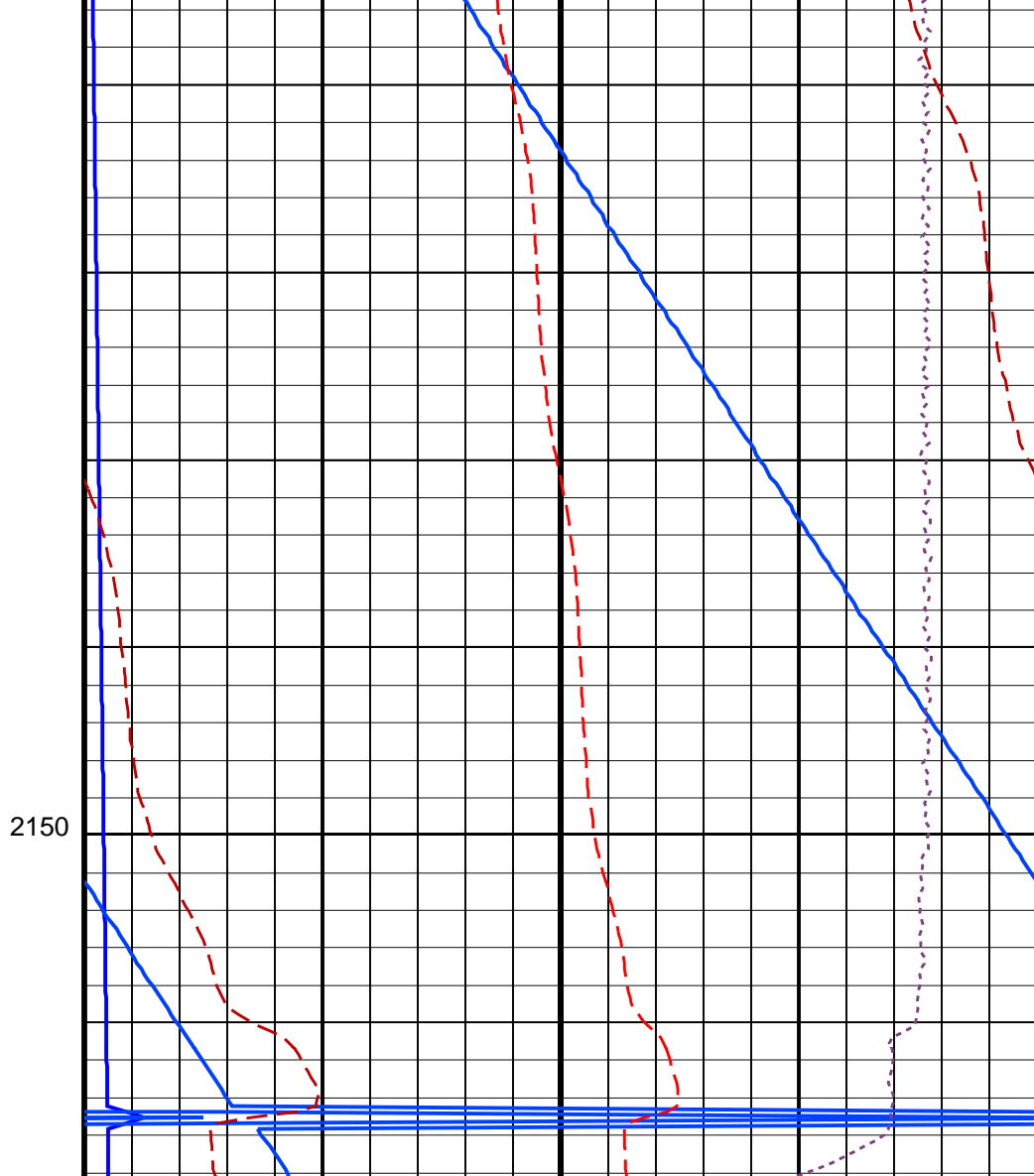
PIP SUMMARY

Time Mark Every 60 S





Well Temperature (WTEP) (DEGF)	Well Pressure (SGP_DL) (PSIA)
Gamma Ray (GR WPGRT) (GAPI)	
0	150
CCL (CCL)	
-19	1
CCL From CCL_WPP to T1	



Well Temperature (WTEP) (DEGF)	210	220
Strain Gauge Pressure (SGP_DL) (PSIA)		
0		2500
Strain Gauge Pressure (SGP_DL) (PSIA)		
0		50
Well Temperature (WTEP) (DEGF)	0	5
Tension (TENS) (LBF)		
0		2500

PIP SUMMARY

Time Mark Every 60 S

Parameters

DLIS Name	Description	Value	
WPST-AB: WPP Shooting Tool			
U-COMM_VOLT	ASFS Comm Voltage	50	V
U-ERSB_ON_TIME	ERSB Voltage Hold Time	180	S
U-SEC_ON_TIME	SECURE Voltage Hold Time	10	S
U-SHOOT_VOLT_LIM	Shooting Voltage Limit	510	V
WPPTT-AA/BA: WPP Pressure Temperature Tool			
ACUP	Constant Update Switch	INIT_STATION_LOG	
PCTS	Pressure Correction Temperature Source	TEMS	
WPTET-AA: WPP Telemetry Tool			
CCLD	CCL reset delay	12	IN

CCLG	Casing Collar Locator Gain	12DB
CCLT	CCL Detection Level	0.3
U-TILT_X_GAIN	WPTET Tilt X Gain	1
U-TILT_X_OFFSET	WPTET Tilt X Offset	0
U-TILT_Y_GAIN	WPTET Tilt Y Gain	1
U-TILT_Y_OFFSET	WPTET Tilt Y Offset	0

Format: WPP_PT	Vertical Scale: 1:200	Graphics File Created: 03-Oct-2006 13:34
----------------	-----------------------	--

OP System Version: 14C0-302
MCM

WPP_GUN	SRC-3220-WPP-AAP\$	WPST-AB	SRC-3220-WPP-AAP\$
WPPTT-AA/BA	SRC-3220-WPP-AAP\$	WPGRT-A	14C0-302
WPTET-AA	SRC-3220-WPP-AAP\$		

Output DLIS Files

DEFAULT	PERFO_Perfo_WPGRT_015LUP	FN:14	PRODUCER	03-Oct-2006 13:34
---------	--------------------------	-------	----------	-------------------

Company: **Esso Australia Ltd.**

Schlumberger

Well: **B-14**
Field: **Bream B**
Rig : **Prod4**
Country: **Australia**

2 1/8" Phased Powerjet
WPP Perforation
7" HPI PSP Plug